

# **Appendix I)**

# proposed mixed use development

344 high street PENRITH



proposed mixed use development  
at 344 high street PENRITH by colin henry

lot no | 45  
dp no | 1027688  
site area | 1,610.83 m<sup>2</sup>

bathurst office  
02 6332 6206 | 1  
bathurst@cdgarchitects.com.au | 6

penrith office  
02 4732 4430 | 1  
penrith@cdgarchitects.com.au | 6

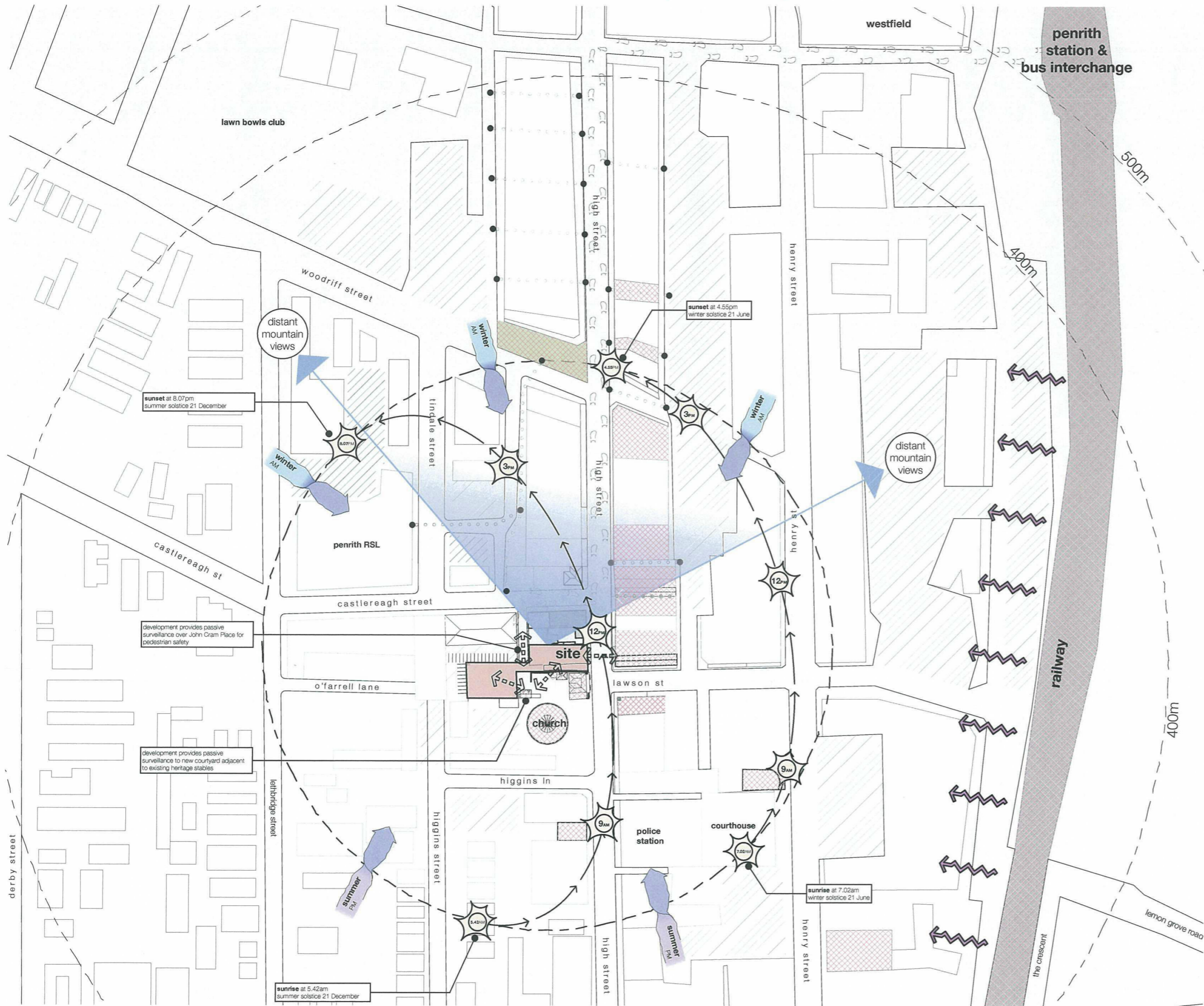
sydney office  
02 9764 6100 | 1  
sydney@cdgarchitects.com.au | 6

integrated DESIGN group  
architects bathurst | sydney

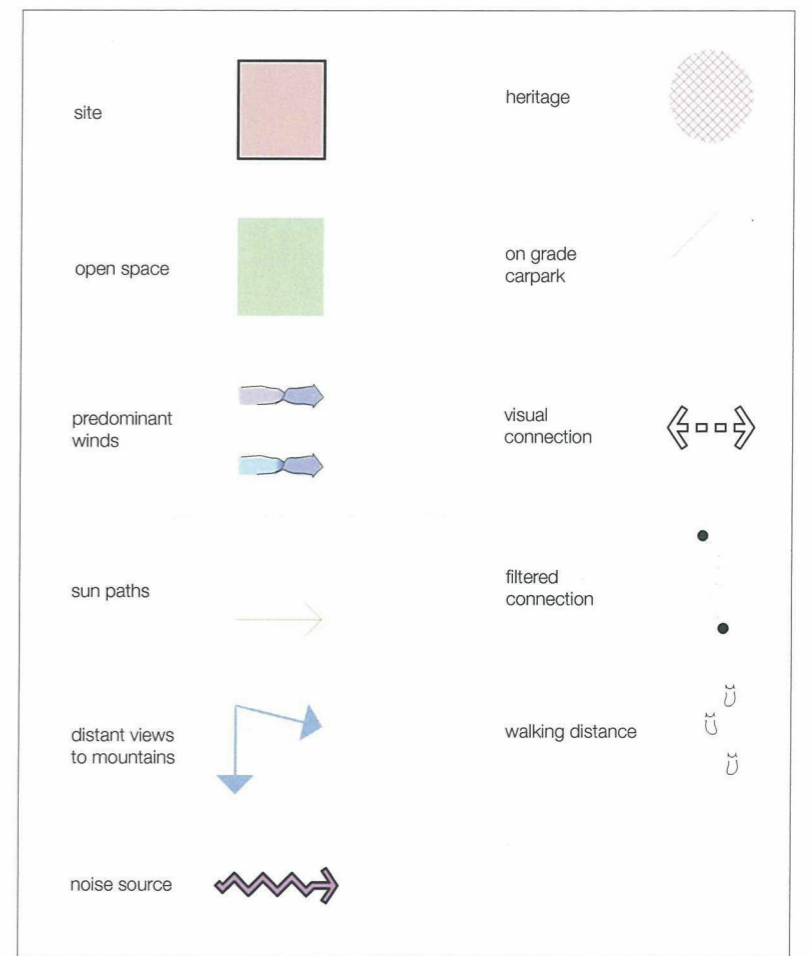
DA

copyright | integratedDESIGNgroup p/l | abn 21 995 789 058  
nominated architects | tony mcburney reg. no. 5273 | simon thorne reg. no. 7093

HEN27390  
24 | 02 | 16



location plan (not to scale)



architect  
**integrated DESIGN group**  
 architects bathurst | sydney

copyright  
 integratedDESIGNgroup p1  
 21/03/15 19:05:05

bathurst office  
 tel: 02 6332 6206  
 bathurst@idgarchitects.com.au

sydney office  
 tel: 02 9764 0100  
 sydney@idgarchitects.com.au

finishes

|      |                        |      |                         |     |                      |
|------|------------------------|------|-------------------------|-----|----------------------|
| BORY | brick on edge          | DPSB | down pipe & spreader    | PFC | printed fibre cement |
| BOE  | brick on edge          | EGL  | existing ground line    | PWB | printed wall board   |
| BPB  | bagged paint brickwork | EMB  | electrical meterboard   | SC  | render course        |
| CCR  | corrugated roof sheet  | FC   | face brick              | TCB | terrace              |
| CF   | concrete               | FIL  | fire cement             | TFB | timber floor boards  |
| CFC  | concrete               | FRL  | fire cement             | TRC | terrace              |
| CCJ  | concrete               | F    | fixed glass             | V   | vinyl                |
| CNC  | control joint          | FGL  | finished ground line    |     |                      |
| CT   | control joint          | GM   | ground level            |     |                      |
| CPT  | control joint          | HMS  | hot water service       |     |                      |
| COG  | concrete               | PB   | printed brick           |     |                      |
| COG  | concrete               | PCR  | printed concrete render |     |                      |
| DP   | down pipe              | PPD  | printed face brick      |     |                      |

fixtures & levels

|     |                     |     |                      |     |                      |
|-----|---------------------|-----|----------------------|-----|----------------------|
| b   | basin               | mhw | micro-wave           | wc  | water closet         |
| bh  | basin               | o/h | overhead             | wm  | washing machine      |
| cs  | cavity sliding door | p   | pantry               | wp  | wire pipe            |
| dry | dryer               | ref | refrigerator         | uo  | under bench oven     |
| ow  | overhead            | rh  | range hood           | wo  | wall oven            |
| esh | external shower     | sc  | solid core door      | wm  | water meter          |
| fr  | fridge              | sh  | shower               |     |                      |
| fw  | floor waste         | ss  | stainless steel sink | rl  | reduced level        |
| gd  | ground level        | st  | stove                | fl  | finished floor level |
| hc  | hollow core door    | stw | stairwell            | low | top of wall          |
| hr  | hollow core door    | t   | tub                  | typ | typical              |
| lb  | letterbox           | tr  | trailer              |     |                      |
| m   | minor               | trh | trailer holder       |     |                      |

general notes

- figured dimensions take precedence over scaled drawings
- contractors to check and verify all levels datum and dimensions on site
- all materials and workmanship to be in accordance with current written manufacturers instructions local regulations and SAA codes.
- conflicting information to be brought to notice of the architect and clarification sought before proceeding with any works
- all drawings are not for construction and are subject to further design development, consultant input, council and legislative requirements.

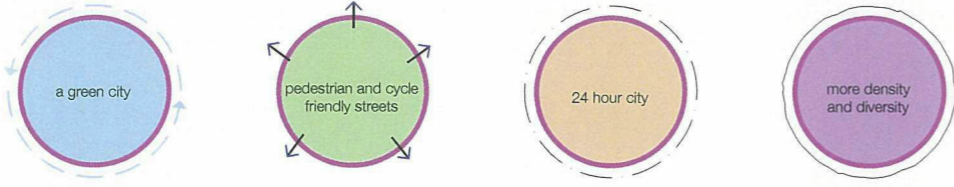
| revision | date | description                        |
|----------|------|------------------------------------|
| 20/05/15 | a    | preliminary issue to consultants   |
| 27/07/15 | b    | issue for client review            |
| 25/05/15 | c    | issue for consultant co-ordination |
| 09/10/15 | d    | DA issue                           |
| 24/02/16 | e    | revised DA issue                   |

title  
**site analysis**  
 proposed mixed use development at 344 high street PENRITH for C&BE

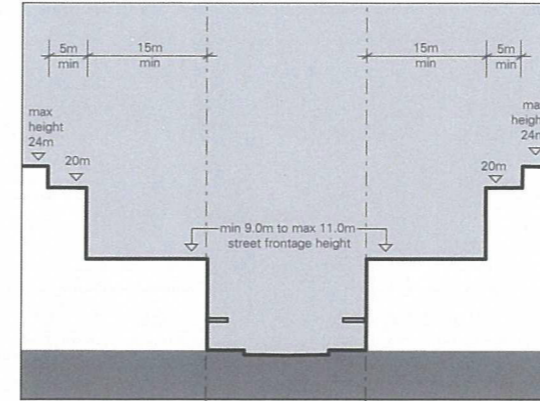
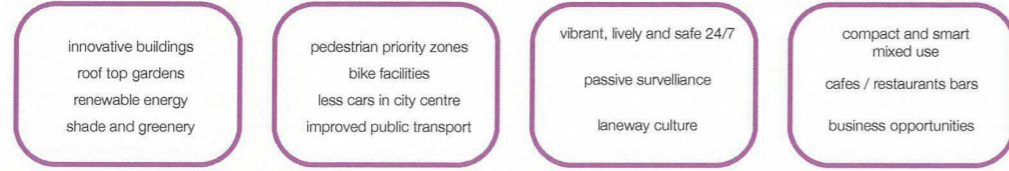
project reference: HEN27390  
 drawn by: SL | CT | AB  
 checked by: ST | AE  
 scale: 1:2000 @ a2

DA 0001 issue E

penrith new west objectives



design elements



6 building height type b penrith city DCP part E11

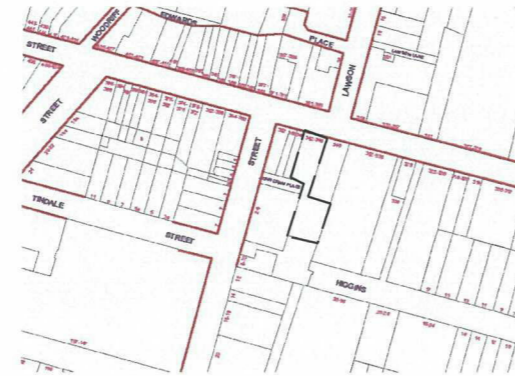
| floor space ratio (LEP)   |                           |
|---|---------------------------|
| site area   | 1,610.83m <sup>2</sup>    |
| max allowable FSR to high street (FSR zone T)                     | 2 : 1                     |
| max. allowable FSR to john cram place street (FSR zone T)         | 3 : 1                     |
| <b>proposed max. allowable FSR</b> (to match adjacent FSR zone V) | <b>3 : 1</b>              |
| <b>proposed allowable GFA</b>                                     | <b>4,832m<sup>2</sup></b> |

| building height   |            |
|---|------------|
| max. building height (FSR height zone M1)                           | 12m        |
| <b>proposed max. building height</b> (to match adjacent HOB zone S) | <b>24m</b> |
| <b>proposed building height</b>                                     | <b>24m</b> |

| street set backs                  |             |                 |
|-----------------------------------|-------------|-----------------|
| high street                       | (up to 12m) | 0m              |
|                                   | (above 12m) | 15m             |
|                                   | (above 20m) | 20m             |
| <b>proposed building setbacks</b> |             | <b>complies</b> |



1 floor space ratio penrith LEP 2010



2 active street frontage penrith LEP 2010

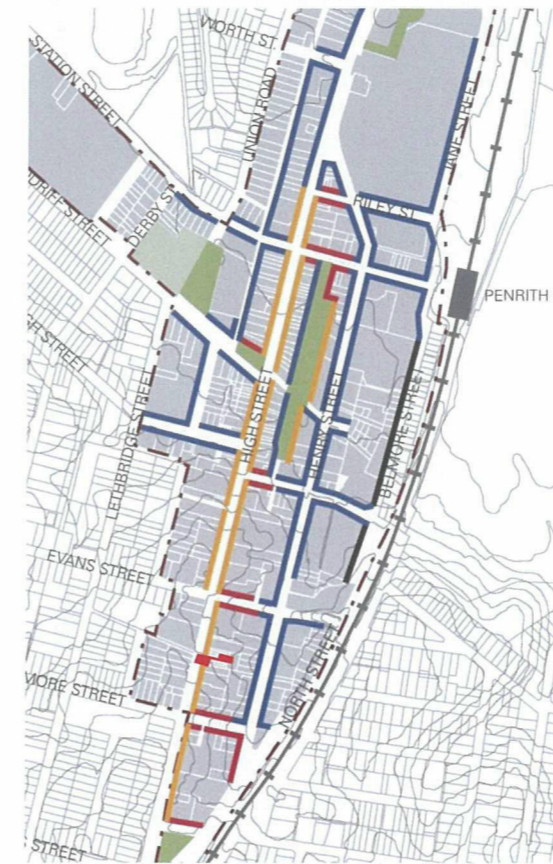


3 height of buildings penrith LEP 2010



- Conservation Area - General
- Item - General
- Item - Archaeological

4 heritage penrith LEP 2010



- Street frontage height A applies - refer to figure E11.5
- Street frontage height B applies - refer to figure E11.6
- Street frontage height C applies - refer to figure E11.7
- Street section D applies - refer to figure E11.8
- Special section through Allen Place - refer to figure E11.9
- Front setback applies as specific in figure E11.3

5 street setbacks penrith city DCP part E11

architect

integrated DESIGN group  
architects bathurst | sydney

finishes

|      |                        |      |                        |
|------|------------------------|------|------------------------|
| BORY | boundary               | DFAS | downpipe & spreader    |
| BOE  | brick on edge          | EGL  | existing ground line   |
| BPB  | bagged paint brickwork | EMB  | electrical meterboard  |
| CCR  | corrugated roof sheet  | FB   | face brick             |
| CF   | coloured fascia        | FC   | fine cement            |
| CFC  | concrete fibre cement  | FFL  | finished floor level   |
| CCNC | concrete               | F    | floor glass            |
| CJ   | control joint          | FGL  | finished ground line   |
| CT   | ceramic tile           | GM   | gas meter              |
| CPT  | curb                   | HWS  | hot water services     |
| CRT  | concrete roof tile     | PLB  | plasterboard           |
| COG  | coloured glass gutter  | PCR  | coloured cement render |
| DP   | downpipe               | PPD  | painted face brick     |

fixtures & levels

|     |                     |      |                      |     |                      |
|-----|---------------------|------|----------------------|-----|----------------------|
| b   | basin               | mw   | microwave            | wc  | water closet         |
| bh  | basinhead           | oh   | overhead             | wm  | washing machine      |
| cs  | cavity sliding door | p    | party                | wp  | wind pipe            |
| dry | dryer               | ref  | refrigerator         | uo  | under bench unit     |
| dw  | dishwasher          | rh   | rangehood            | wo  | wall oven            |
| exh | exhaust fan         | ss   | solid core door      | wm  | water meter          |
| fr  | fridge              | sh   | scalloped            |     |                      |
| fw  | floor waste         | st   | stainless steel sink | rl  | reduced level        |
| gd  | garden drain        | st   | stove                | fl  | finished floor level |
| hc  | hollow core door    | shwr | shower               | tt  | top of wall          |
| hr  | handrail            | t    | toilet               | typ | typical              |
| ib  | interlock           | tr   | trivet rail          |     |                      |
| m   | minor               | trh  | toilet rail holder   |     |                      |

general notes

1. figured dimensions take precedence over scaled drawings
2. contractors to check and verify all levels datum and dimensions on site
3. all materials and workmanship to be in accordance with current written manufacturers instructions local regulations and SAA codes
4. conflicting information to be brought to notice of the architect and clarification sought before proceeding with any works
5. all drawings are not for construction and are subject to further design development, consultant input, council and legislative requirements.

revision

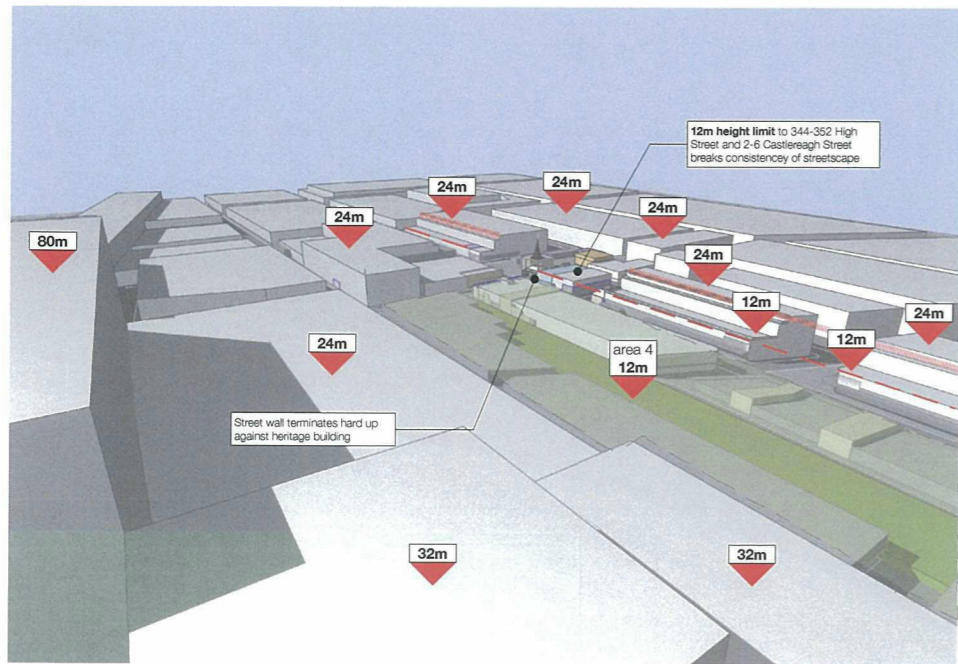
|          |   |          |
|----------|---|----------|
| 02/11/15 | a | DA issue |
|----------|---|----------|

title

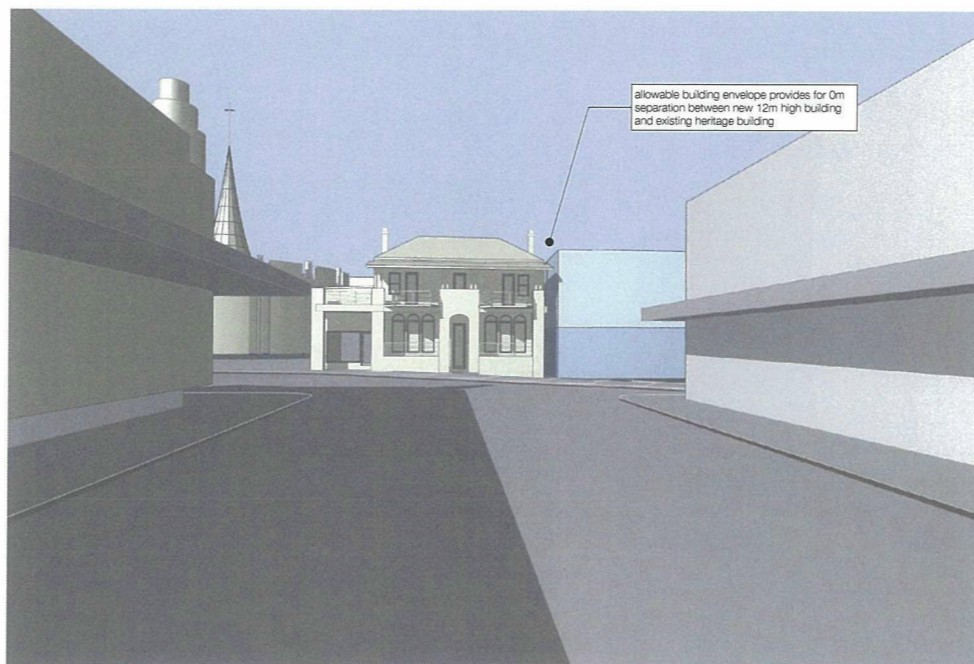
development control summary  
proposed mixed use development at 344 high street PENRITH for CABE

|                    |              |  |  |
|--------------------|--------------|--|--|
| project reference: | HEN27390     |  |  |
| drawn by:          | SL   CT   AB |  |  |
| checked by:        | ST   AE      |  |  |
| scale:             | nts @ a2     |  |  |

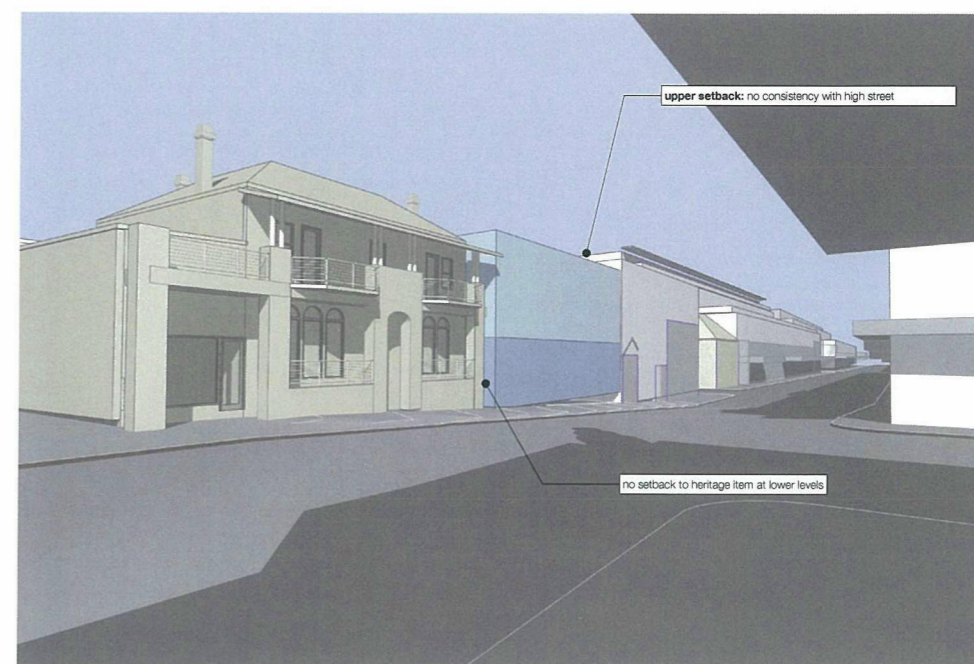
### existing controls envelope



1 | existing control overview

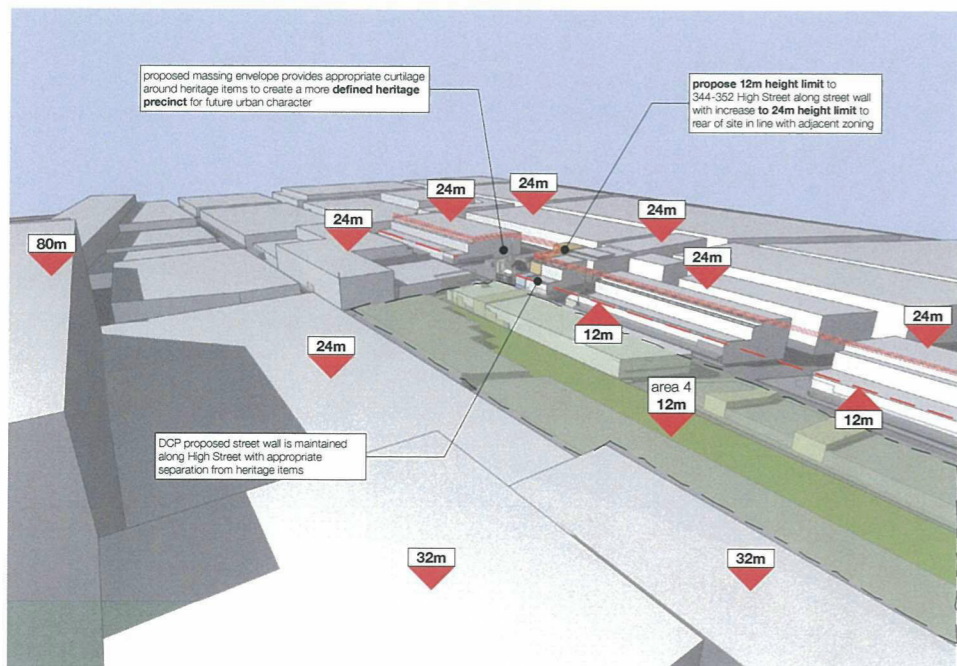


2 | existing controls view 1

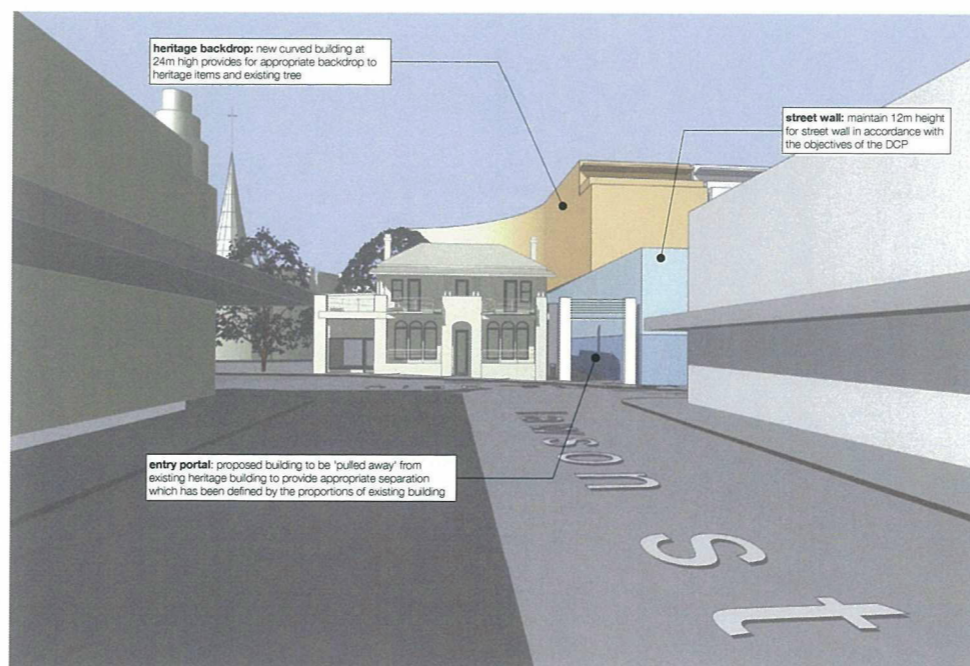


3 | existing controls view 2

### proposed massing envelope



4 | proposed massing overview



4 | proposed massing view 1



5 | proposed massing view 2

architect  
**integrated DESIGN group**  
 architects bathurst | sydney

copyright  
 integratedDESIGNgroup p/l  
 abn 21 995 789 056

bathurst office  
 tel: 02 6332 6206  
 bathurst@idgarchitects.com.au

sydney office  
 tel: 02 9764 0100  
 sydney@idgarchitects.com.au

| finishes |                         | fixtures & levels |                      |
|----------|-------------------------|-------------------|----------------------|
| BORY     | brick/clay              | bw                | black waste          |
| BOE      | brick on edge           | dm                | downcast             |
| BPB      | bagged paint driveway   | p                 | paving               |
| CCR      | conjugated roof sheet   | ref               | refrigerator         |
| CF       | coloured tile           | rh                | rain head            |
| CFC      | concrete - fibre cement | sc                | solid core door      |
| CNCQ     | concrete                | sh                | shower               |
| CJ       | control joint           | ss                | stainless steel sink |
| CT       | curb                    | st                | stove                |
| CPT      | curb                    | shwr              | shower               |
| CRT      | concrete roof tile      | t                 | tap                  |
| COG      | coloured glass gutter   | tr                | trailer rail         |
| DP       | downpipe                | trh               | trailer hitch        |
| DPBS     | down pipe & downcast    | mww               | mechanical waste     |
| EGL      | existing ground line    | om                | overhead             |
| EMB      | electrical meterboard   | pn                | paving               |
| FB       | fibre brick             | pr                | refrigerator         |
| FC       | fibre cement            | rl                | reduced level        |
| FFL      | finished floor level    | sc                | solid core door      |
| F        | floor glass             | sh                | shower               |
| FGL      | finished ground line    | ss                | stainless steel sink |
| GM       | gas meter               | st                | stove                |
| HMS      | hot water service       | shwr              | shower               |
| PB       | plasterboard            | t                 | tap                  |
| PCR      | plaster cement render   | tr                | trailer rail         |
| PFD      | planted face brick      | trh               | trailer hitch        |
| PFC      | planted fibre cement    | wc                | water closet         |
| PWB      | planted wall/brickwork  | wm                | washed machine       |
| SC       | solid core              | wp                | went pipe            |
| TC       | trailer                 | uo                | under bench oven     |
| TFB      | trailer floor boards    | wo                | wall oven            |
| TRC      | trailer cast iron       | wm                | water meter          |
| V        | vent                    |                   |                      |

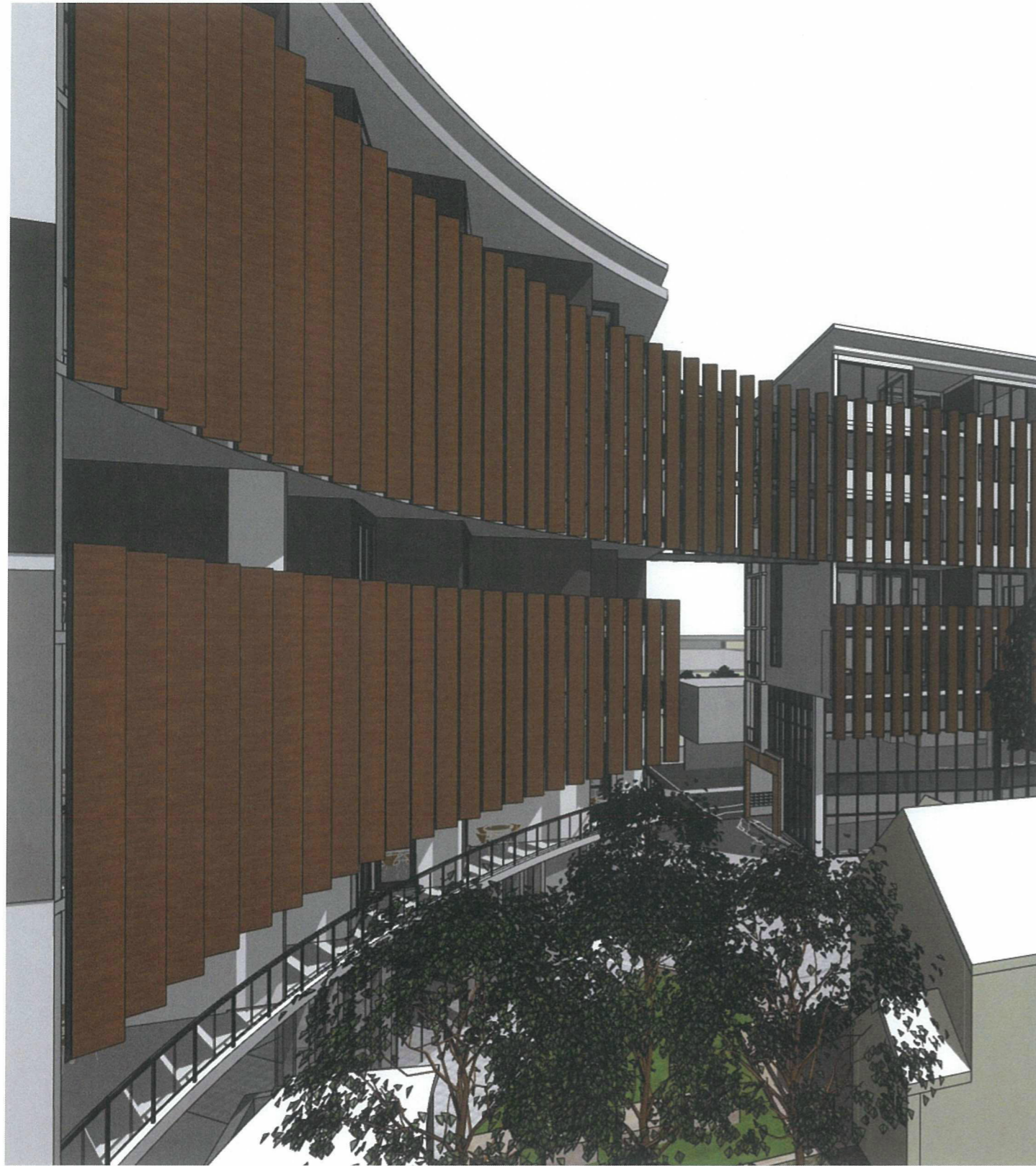
| fixtures & levels |                      | general notes |  |
|-------------------|----------------------|---------------|--|
| b                 | basin                | 1.            | figured dimensions take precedence over scaled drawings  |
| bh                | basin head           | 2.            | contractors to check and verify all levels datum and dimensions on site  |
| cs                | cast iron            | 3.            | all materials and workmanship to be in accordance with current written manufacturers instructions local regulations and SAA codes            |
| dry               | dry                  | 4.            | conflicting information to be brought to notice of the architect and clarification sought before proceeding with any works                   |
| dw                | downcast             | 5.            | all drawings are not for construction and are subject to further design development, consultant input, council and legislative requirements. |
| esh               | external shower      |               |  |
| fr                | fridge               |               |  |
| fw                | four waste           |               |  |
| gd                | ground level         |               |  |
| hc                | hot water cistern    |               |  |
| hnd               | hand                 |               |  |
| lb                | letterbox            |               |  |
| m                 | misc                 |               |  |
| mww               | mechanical waste     |               |  |
| om                | overhead             |               |  |
| p                 | paving               |               |  |
| ref               | refrigerator         |               |  |
| rh                | rain head            |               |  |
| sc                | solid core door      |               |  |
| sh                | shower               |               |  |
| ss                | stainless steel sink |               |  |
| st                | stove                |               |  |
| shwr              | shower               |               |  |
| t                 | tap                  |               |  |
| tr                | trailer rail         |               |  |
| trh               | trailer hitch        |               |  |
| wc                | water closet         |               |  |
| wm                | washed machine       |               |  |
| wp                | went pipe            |               |  |
| uo                | under bench oven     |               |  |
| wo                | wall oven            |               |  |
| wm                | water meter          |               |  |

| general notes |  | revision |            |
|---------------|--|----------|------------|
| 1.            | figured dimensions take precedence over scaled drawings  | 02/11/15 | a DA issue |
| 2.            | contractors to check and verify all levels datum and dimensions on site  |          |            |
| 3.            | all materials and workmanship to be in accordance with current written manufacturers instructions local regulations and SAA codes            |          |            |
| 4.            | conflicting information to be brought to notice of the architect and clarification sought before proceeding with any works                   |          |            |
| 5.            | all drawings are not for construction and are subject to further design development, consultant input, council and legislative requirements. |          |            |

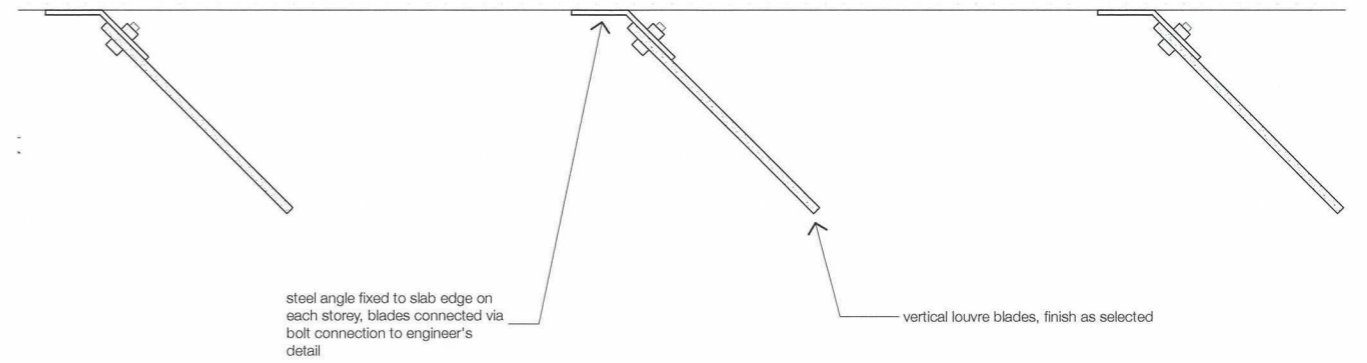
| revision |            | title  |              |
|----------|------------|--|--------------|
| 02/11/15 | a DA issue | site envelope analysis   |              |
|          |            | proposed mixed use development at 344 high street PENRITH for C&BE |              |
|          |            | project reference:   | HEN27390     |
|          |            | drawn by:  | SL   CT   AB |
|          |            | checked by:  | ST   AE      |
|          |            | scale:   | nts @ a2     |

project reference: HEN27390  
 drawn by: SL | CT | AB  
 checked by: ST | AE  
 scale: nts @ a2

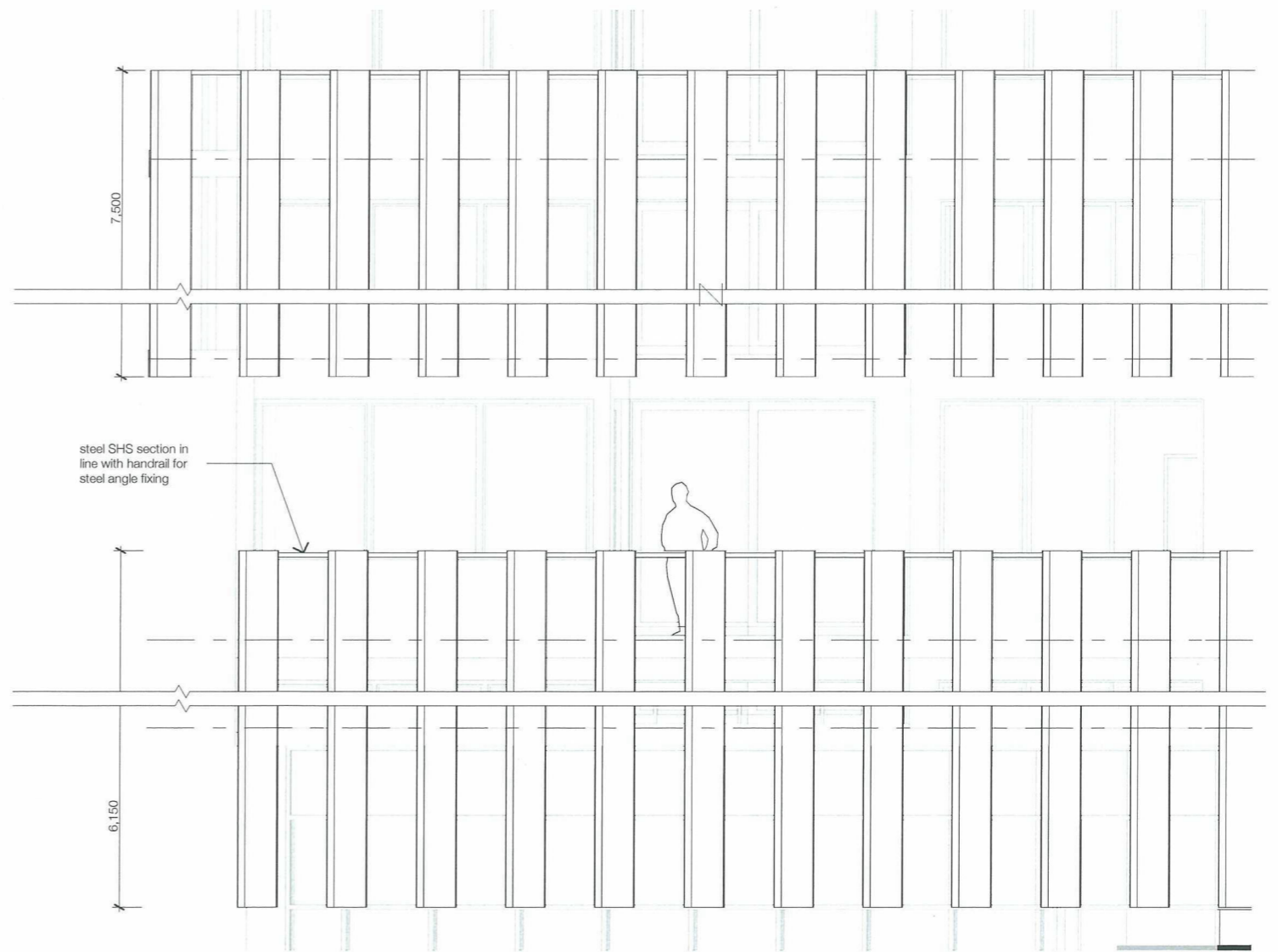
DA 0003 issue A



1 | 3D louvre perspective



2 | louvre detail plan  
1:10



3 | louvre detail elevation  
1:50

architect

integrated DESIGN group  
architects bathurst | sydney

finishes

|      |                        |      |                       |     |                       |
|------|------------------------|------|-----------------------|-----|-----------------------|
| BDRY | boundary               | DBMS | downpipe & spreader   | PFC | printed face cement   |
| BOE  | brick on edge          | EGL  | existing ground line  | PWB | printed weatherboard  |
| BPB  | bugged paint brickwork | EMB  | electrical meterboard | SC  | solier course         |
| COR  | corrugated roof sheet  | FB   | face brick            | TC  | terrace               |
| CF   | colourbond fascia      | FC   | face cement           | TFB | timber floor boards   |
| CPC  | compres. fibre cement  | FFL  | finished floor level  | TRC | terracotta roof tiles |
| CONC | concrete               | F    | fixed glass           | V   | vinyl                 |
| CJ   | control joint          | FGL  | finished ground line  |     |                       |
| CT   | ceramic tile           | GM   | gas meter             |     |                       |
| CPT  | carpet                 | HWS  | hot water service     |     |                       |
| CRT  | concrete roof tile     | PB   | painterboard          |     |                       |
| CQG  | colourbond quad gutter | PCR  | printed cement render |     |                       |
| DP   | downpipe               | PPD  | printed face brick    |     |                       |

fixtures & levels

|     |                     |      |                      |     |                      |
|-----|---------------------|------|----------------------|-----|----------------------|
| b   | basin               | mw   | microwave            | wc  | water closet         |
| bh  | bulkhead            | oh   | overhead             | wm  | washing machine      |
| cs  | casily sliding door | p    | pantry               | wp  | wind pipe            |
| dry | dryer               | ref  | refrigerator         | uo  | under bench oven     |
| dw  | dishwasher          | rh   | rangehood            | wo  | wall oven            |
| exh | exhaust fan         | sc   | solid core door      | wm  | water meter          |
| f   | fridge              | sh   | slab                 |     |                      |
| fw  | floor waste         | sh   | slab                 |     |                      |
| gd  | grated drain        | ss   | stainless steel sink | rl  | reduced level        |
| hc  | hollow core door    | st   | stove                | rl  | finished floor level |
| hr  | handrail            | shwr | shower               | tl  | top of wall          |
| id  | interior door       | t    | toilet               | typ | typical              |
| m   | mirror              | tr   | toilet rail          |     |                      |
|     |                     | trh  | toilet roll holder   |     |                      |

general notes

1. figured dimensions take precedence over scaled drawings
2. contractors to check and verify all levels datum and dimensions on site
3. all materials and workmanship to be in accordance with current written manufacturers instructions local regulations and SAA codes
4. conflicting information to be brought to notice of the architect and clarification sought before proceeding with any works
5. all drawings are not for construction and are subject to further design development, consultant input, council and legislative requirements.

revision

|          |   |                  |
|----------|---|------------------|
| 05/02/16 | a | DA ISSUE         |
| 04/03/16 | b | revised DA ISSUE |

title

**louvre detail**  
proposed mixed use development at 344 high street PENRITH for CABA

project references:  
drawn by:  
checked by:  
scale:

HEN27390  
SL | CT | AB  
ST | AE  
varies @ a2





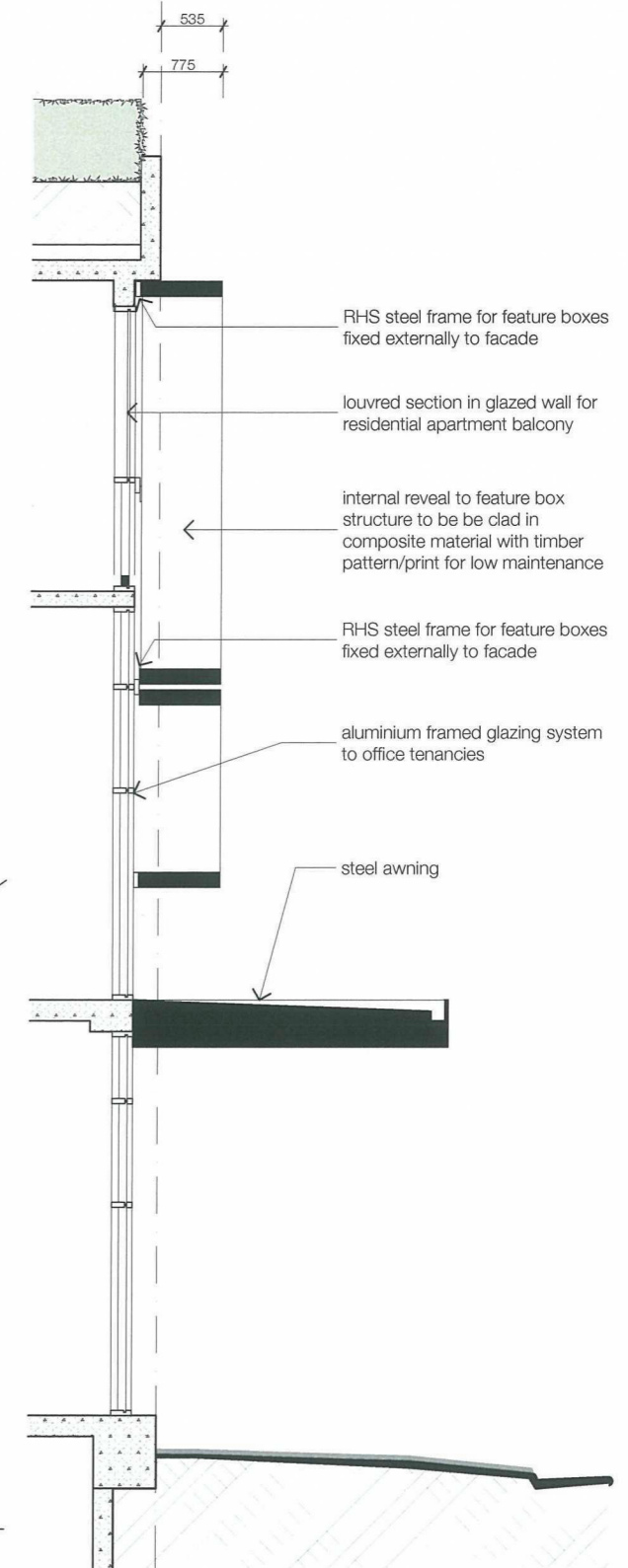
1 | box frame view 1



2 | box frame view 2



3 | box frame elevation detail  
1:50



4 | box frame section detail  
1:50

architect  
**integrated DESIGN group**  
architects bathurst | sydney

| finishes |                        | fixtures & levels |                      |
|----------|------------------------|-------------------|----------------------|
| BDRY     | brickwork              | b                 | basin                |
| BOE      | brick on edge          | bh                | backhead             |
| BPB      | bagged paint backdrop  | cs                | cavity sliding door  |
| CCR      | corrugated roof sheet  | dry               | dry                  |
| CF       | coloured fascia        | dw                | dishwasher           |
| CFC      | concrete, fibre cement | gsh               | gutterhead fan       |
| CONC     | concrete               | fr                | fretz                |
| CJ       | control joint          | fw                | floor waste          |
| CT       | concrete tile          | gd                | grated drain         |
| CPT      | concrete paver tile    | hc                | hollow core door     |
| CRT      | concrete roof tile     | hr                | handrail             |
| COG      | coloured glass gutter  | lb                | letterbox            |
| DP       | down pipe              | m                 | mirror               |
| DRS      | drivings & sprayer     | mhw               | mechanical overhead  |
| EGL      | existing ground line   | oh                | overhead             |
| EMB      | electrical meter-board | p                 | pantry               |
| FB       | face brick             | ref               | refrigerator         |
| FC       | fibre cement           | rh                | rangehood            |
| FFL      | finished floor level   | sc                | solid core door      |
| F        | field glass            | sc                | scuba tank           |
| FGL      | finished ground line   | ss                | stainless steel sink |
| GM       | gas meter              | st                | stove                |
| HWS      | hot water service      | shwr              | shower               |
| PB       | plasterboard           | t                 | toilet               |
| PCR      | printed concrete paver | tr                | trailer              |
| PTD      | printed four brick     | th                | toilet roll holder   |
| PFC      | printed fibre cement   | vc                | water closet         |
| PWB      | printed weatherboard   | wm                | washing machine      |
| SC       | solid course           | vp                | vent pipe            |
| TC       | timberate              | uo                | under bench oven     |
| TFB      | timber floor boards    | wo                | wall oven            |
| TFC      | timber face cladding   | wm                | water meter          |
| V        | vinyl                  | rl                | reduced level        |
|          |                        | ff                | finished floor level |
|          |                        | tl                | top of wall          |
|          |                        | typ               | typical              |

| general notes   |  |
|---|--|
| 1. figured dimensions take precedence over scaled drawings  |  |
| 2. contractors to check and verify all levels datum and dimensions on site  |  |
| 3. all materials and workmanship to be in accordance with current written manufacturers instructions local regulations and SAA codes            |  |
| 4. conflicting information to be brought to notice of the architect and clarification sought before proceeding with any works                   |  |
| 5. all drawings are not for construction and are subject to further design development, consultant input, council and legislative requirements. |  |

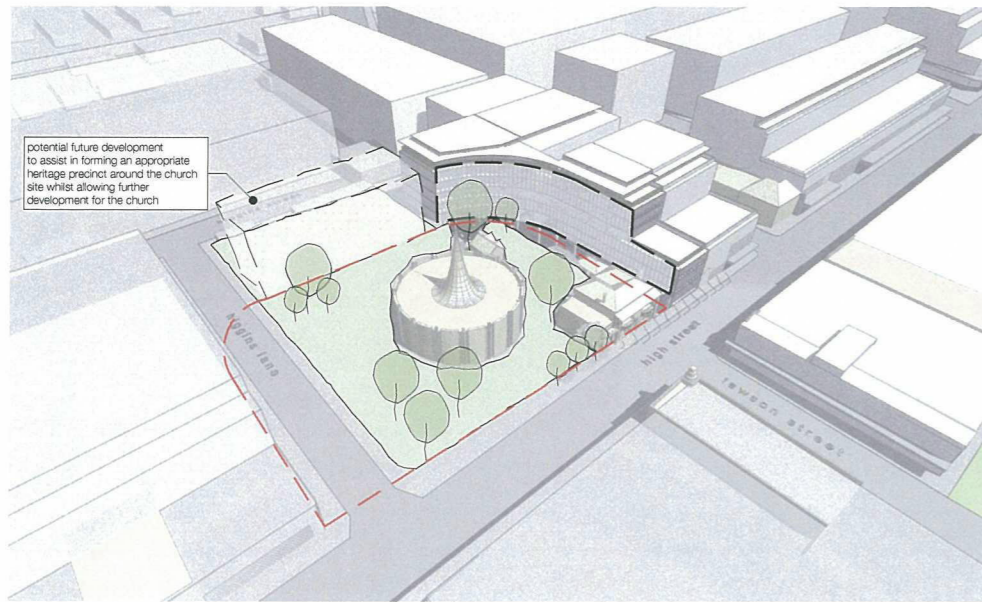
| revision |                    |
|----------|--------------------|
| 05/02/16 | a DA ISSUE         |
| 04/03/16 | b revised DA ISSUE |

| title  |              |
|--|--------------|
| <b>front facade screen detail</b>                                  |              |
| proposed mixed use development at 344 high street PENRITH for CABA |              |
| project reference:   | HEN27390     |
| drawn by:  | SL   CT   AB |
| checked by:  | ST   AE      |
| scale:   | varies @ a2  |

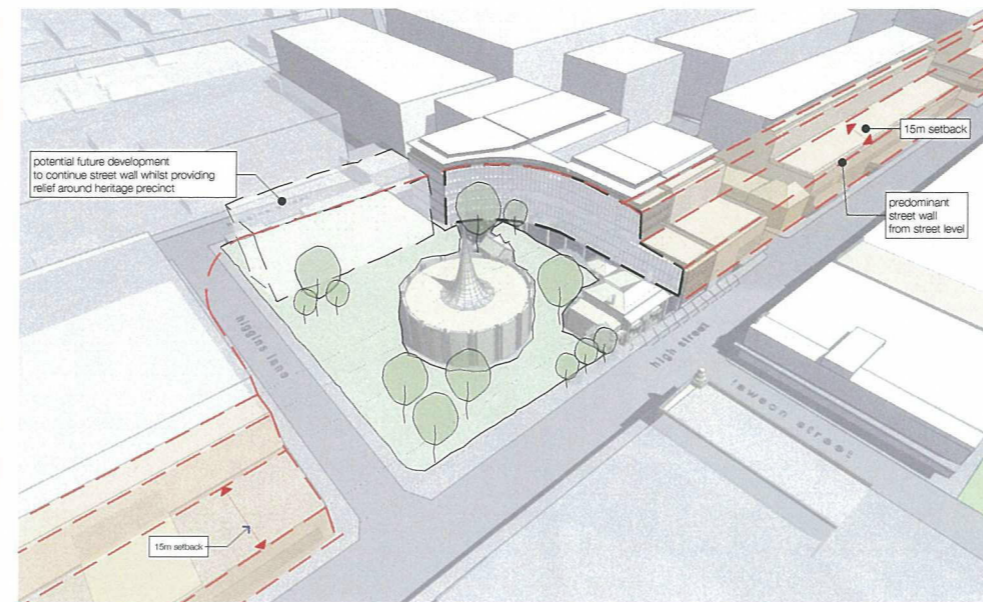
DA 9005

issue B

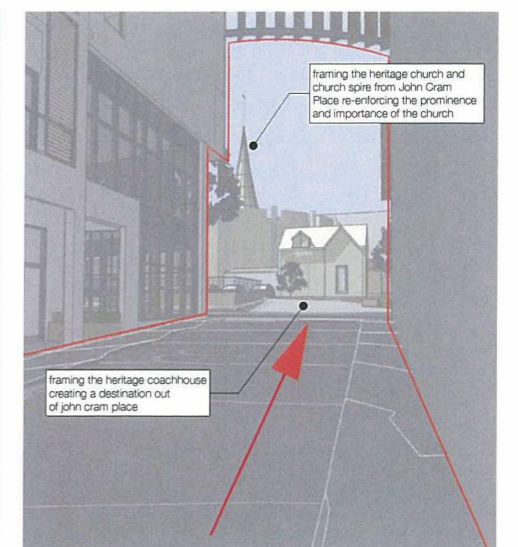
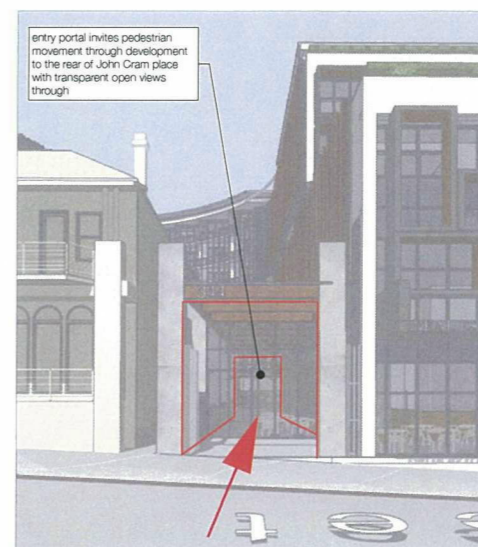
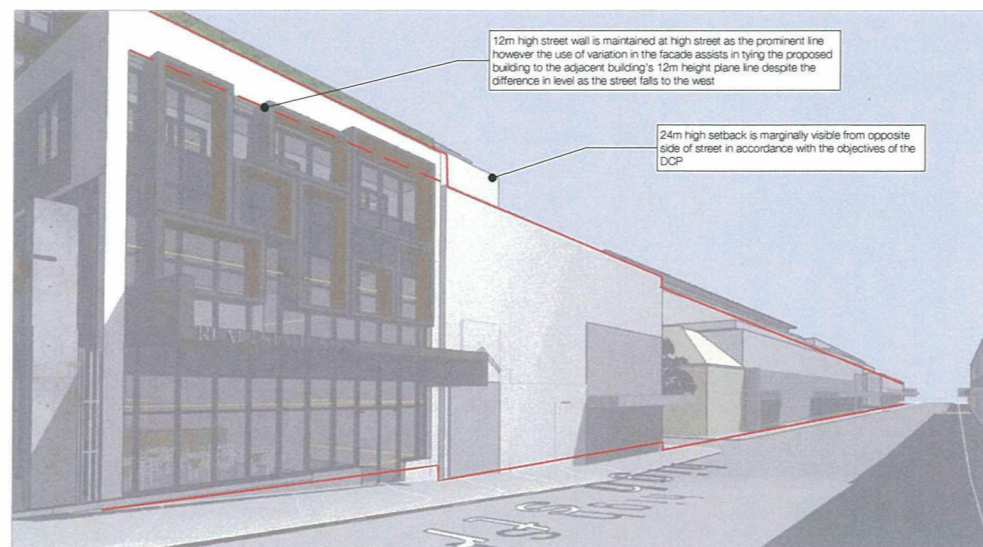
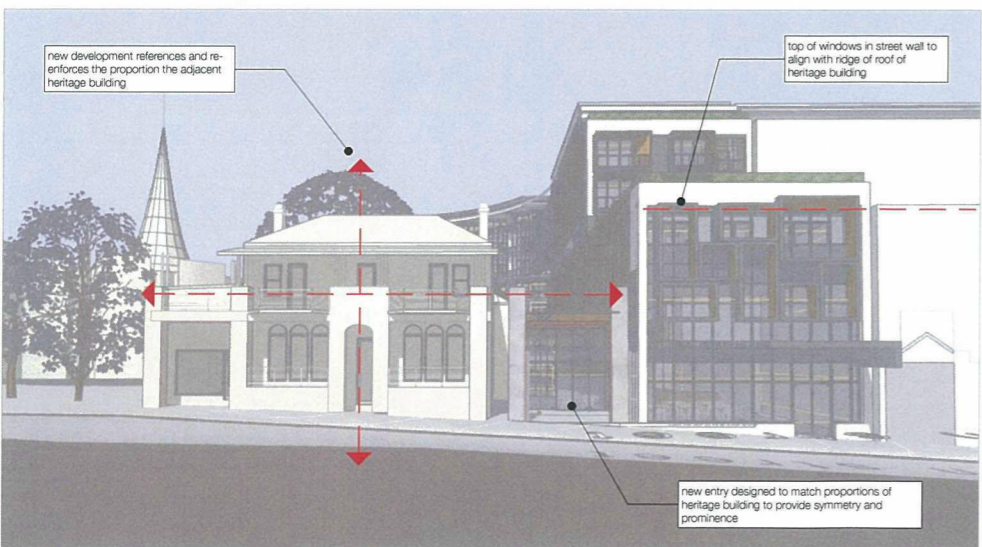
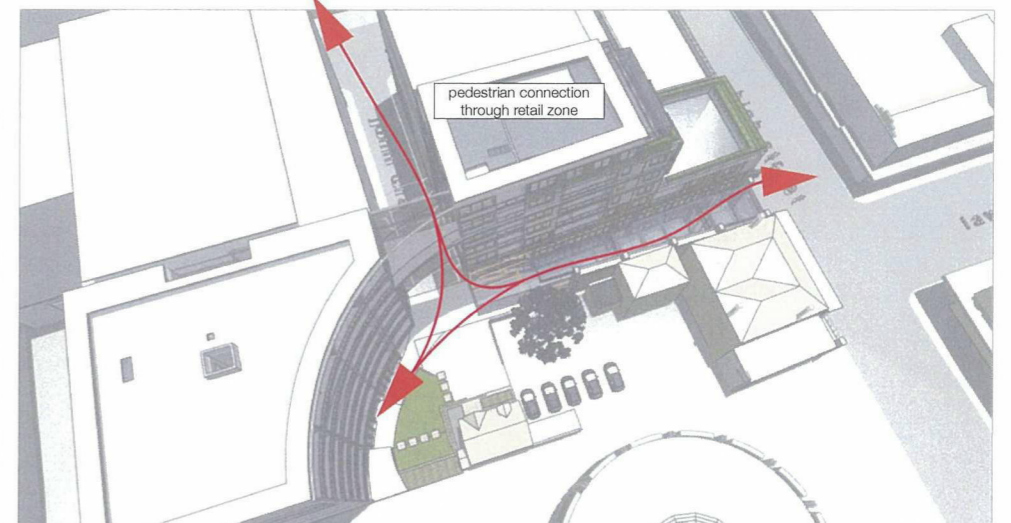
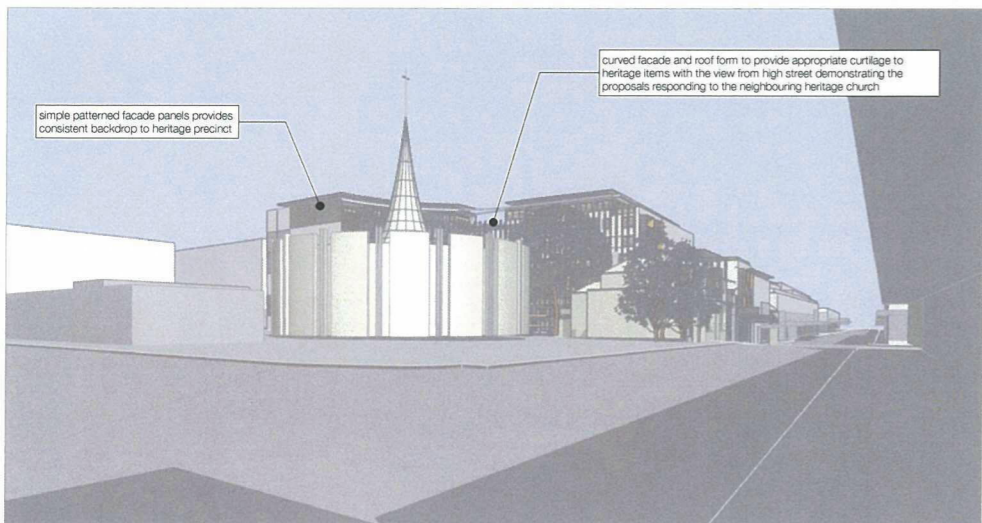
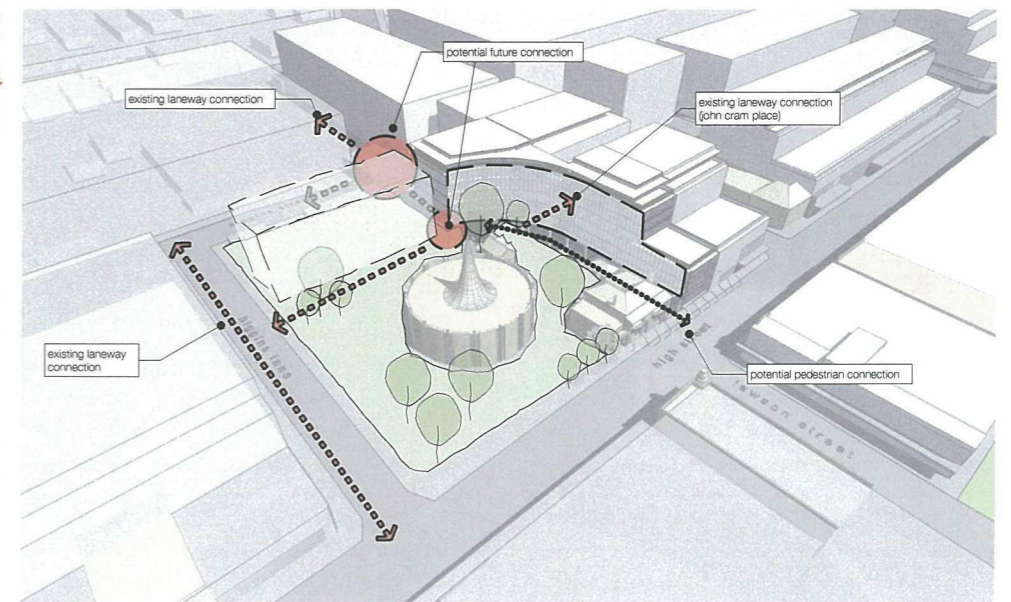
### heritage precinct



### street wall



### movement & connections



architect

**integrated DESIGN group**  
architects bathurst | sydney

copyright integratedDESIGNgroup p/l  
abn 21 1905 789 058

bathurst office  
tel 02 6332 6900  
bathurst@idgarchitects.com.au

sydney office  
tel 02 9764 6100  
sydney@idgarchitects.com.au

Member Australian Institute of Architects

nominated architects  
tony mcbrumey reg18273  
simon thorne reg17303

finishes

|      |                         |      |                       |     |                      |
|------|-------------------------|------|-----------------------|-----|----------------------|
| BDRY | boundary                | DP&S | downpipe & spreader   | PFC | pointed fibre cement |
| BDE  | brick on edge           | EGL  | existing ground line  | PFB | printed fibre cement |
| BBB  | biggest paint breakdown | EMB  | electrical meterboard | SC  | stone course         |
| CF   | corrugated roof sheet   | FB   | face brick            | TC  | timber course        |
| CF   | colorbond facade        | FC   | fibre cement          | TFB | timber floor boards  |
| CFC  | compreg fibre cement    | FFL  | finished floor level  | TRC | terrace/roof tiles   |
| CCNC | concrete                | F    | fresh glass           | V   | vinyl                |
| CCNC | concrete                | F    | finished ground line  |     |                      |
| CJ   | concrete joint          | FGL  | finished ground line  |     |                      |
| CT   | concrete tile           | GM   | gas meter             |     |                      |
| CPT  | carpet                  | HWS  | hot water service     |     |                      |
| CP   | concrete mullion        | PB   | plasterboard          |     |                      |
| CGG  | corrugated galv gutter  | PCR  | pointed cement render |     |                      |
| DP   | downpipe                | PFD  | pointed face brick    |     |                      |

fixtures & levels

|     |                  |     |                      |     |                      |
|-----|------------------|-----|----------------------|-----|----------------------|
| b   | basin            | mw  | microvalve           | wc  | water closet         |
| bh  | backhead         | oh  | overhead             | wm  | washing machine      |
| cs  | concrete slab    | p   | plumbing             | wp  | wind pipe            |
| dry | drain            | ref | refrigerator         | wo  | wall over            |
| dw  | down             | rh  | rangehood            | wm  | water meter          |
| exh | extract fan      | sc  | solid core door      | wtr | water                |
| f   | floor            | sh  | shower               |     |                      |
| fw  | floor waste      | sh  | shower               |     |                      |
| gd  | ground           | ss  | stainless steel sink | rl  | reduced level        |
| hc  | hollow core door | st  | stove                | ff  | finished floor level |
| hr  | handrail         | shw | shower               | ft  | top of wall          |
| h   | handrail         | t   | toilet               | typ | typical              |
| m   | mirror           | tr  | trailer rail         |     |                      |
|     |                  | trh | trailer ramp holder  |     |                      |

- general notes
1. figured dimensions take precedence over scaled drawings
  2. contractors to check and verify all levels datum and dimensions on site
  3. all materials and workmanship to be in accordance with current written manufacturers instructions local regulations and SAA codes
  4. conflicting information to be brought to notice of the architect and clarification sought before proceeding with any works
  5. all drawings are not for construction and are subject to further design development, consultant input, council and legislative requirements.

revision

|          |   |          |
|----------|---|----------|
| 02/11/15 | a | DA issue |
|----------|---|----------|

design principles

proposed mixed use development at 344 high street PENRITH for C&BE

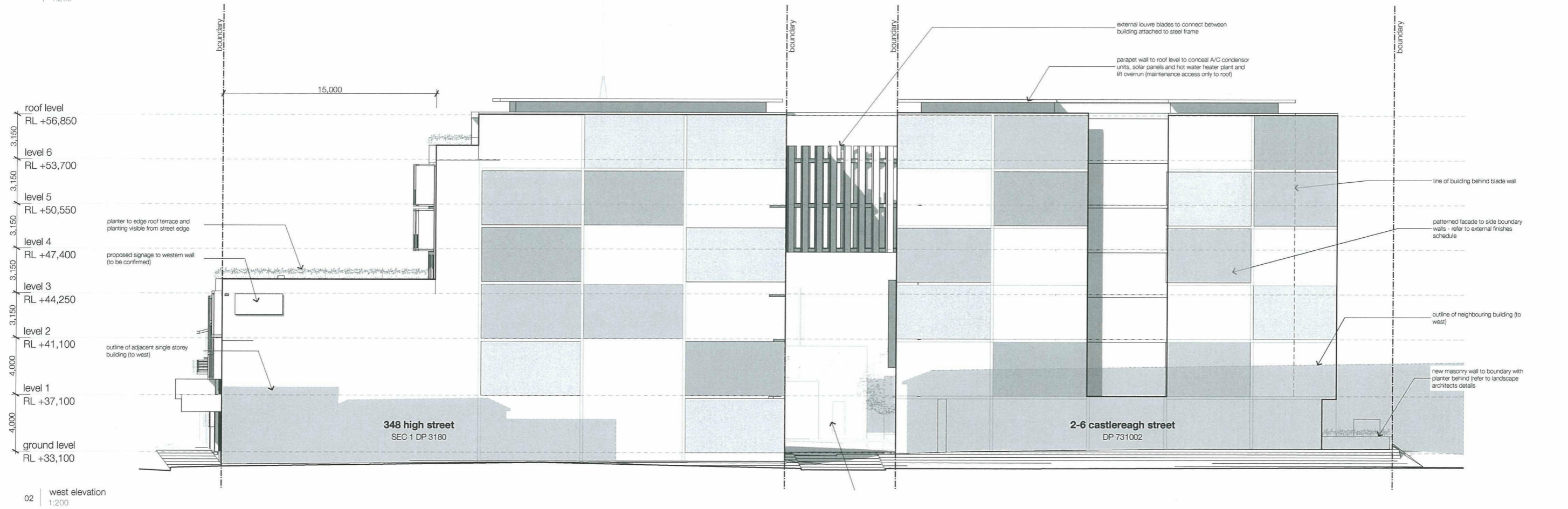
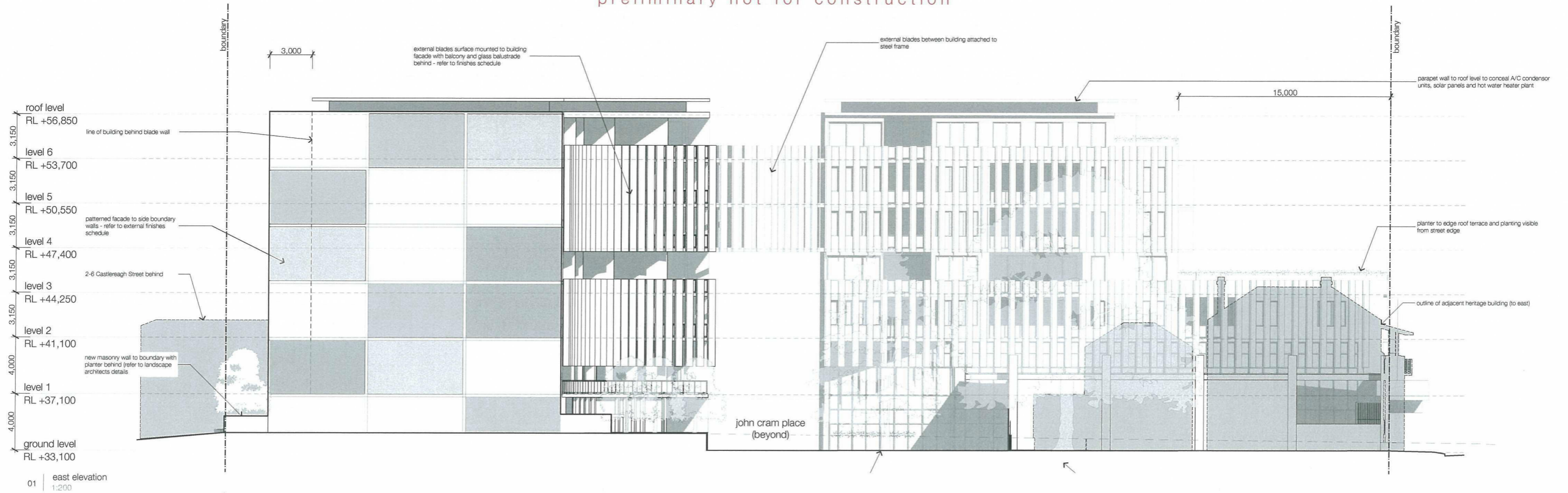
project reference: HEN27390  
 drawn by: SL | CT | AB  
 checked by: ST | AE  
 scale: nts @ a2

DA 0004

issue A



preliminary not for construction



architect  
integrated DESIGN group  
architects bathurst | sydney

| finishes | fixtures & levels       |
|----------|-------------------------|
| BORY     | brunswick               |
| BOE      | brick on edge           |
| BPB      | biggest paint (brown)   |
| COR      | conjugated roof sheet   |
| CP       | concrete                |
| CPC      | concrete, fibre cement  |
| CONC     | concrete                |
| CJ       | control joint           |
| CT       | ceiling tile            |
| CRT      | concrete roof tile      |
| COG      | corrugated galva gutter |
| DP       | downpipe                |
| DPBS     | down pipe & spreader    |
| EGL      | existing ground line    |
| EMB      | electrical meterboard   |
| FB       | face brick              |
| FC       | fire cement             |
| FFL      | finished floor level    |
| F        | fixed glass             |
| FGL      | finished ground line    |
| GM       | gas meter               |
| HWS      | hot water service       |
| PS       | plasterboard            |
| PCR      | printed cement render   |
| PFD      | printed face brick      |
| PFC      | printed fibre cement    |
| PWB      | printed wallboard       |
| SC       | skiller course          |
| TC       | timberate               |
| TFB      | timber floor boards     |
| TRC      | terrace roof tiles      |
| V        | vinyl                   |
| b        | basin                   |
| bh       | bulkhead                |
| cs       | cavity sliding door     |
| dy       | dryer                   |
| dw       | dishwasher              |
| esh      | external fan            |
| fr       | fridge                  |
| fw       | floor waste             |
| gd       | gabled drain            |
| hc       | hollow core door        |
| hr       | handrail                |
| lb       | letterbox               |
| m        | mirror                  |
| mwr      | microwave               |
| o/n      | overhead                |
| p        | pantry                  |
| ref      | refrigerator            |
| rh       | rangehood               |
| sc       | solid core door         |
| sh       | shower                  |
| ss       | stainless steel sink    |
| st       | stove                   |
| shwr     | shower                  |
| t        | tub                     |
| tr       | trivet rail             |
| trh      | trivet rail header      |
| wc       | water closet            |
| wm       | washing machine         |
| vp       | vent pipe               |
| uo       | under bench oven        |
| wo       | wall oven               |
| wm       | water meter             |
| rl       | reduced level           |
| fl       | finished floor level    |
| tlw      | top of wall             |
| typ      | typical                 |

- general notes
1. figured dimensions take precedence over scaled drawings
  2. contractors to check and verify all levels datum and dimensions on site
  3. all materials and workmanship to be in accordance with current written manufacturers instructions local regulations and SAA codes
  4. conflicting information to be brought to notice of the architect and clarification sought before proceeding with any works
  5. all drawings are not for construction and are subject to further design development, consultant input, council and legislative requirements.

revision

| date     | by | description                        |
|----------|----|------------------------------------|
| 26/06/15 | a  | issue for client review            |
| 27/07/15 | b  | issue for client review            |
| 26/09/15 | c  | issue for consultant co-ordination |
| 09/10/15 | d  | DA ISSUE                           |
| 04/03/16 | e  | revised DA ISSUE                   |

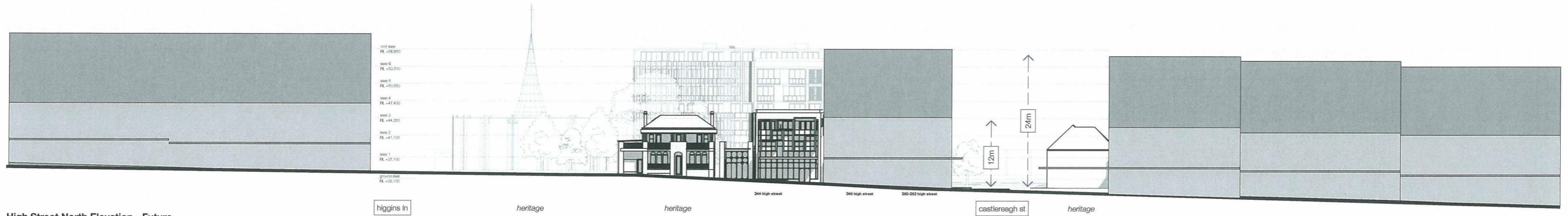
title  
east and west elevations  
proposed mixed use development at 344 high street PENRITH for CABE

project reference: HEN27390  
drawn by: SL | CT | AB  
checked by: ST | AE  
scale: 1:200 @ a2

DA 2001 issue E



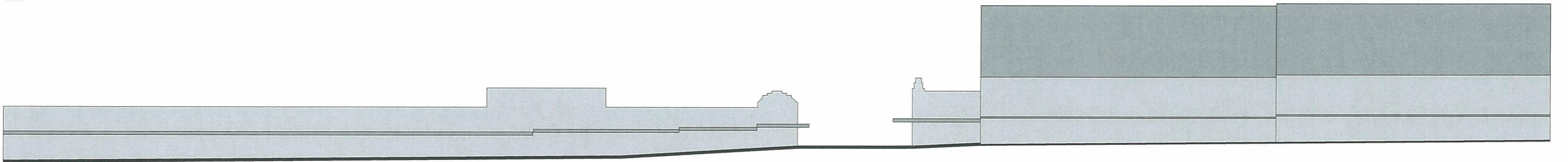
High Street North Elevation - Existing  
1:500



High Street North Elevation - Future  
1:500



High Street South Elevation - Existing  
1:500

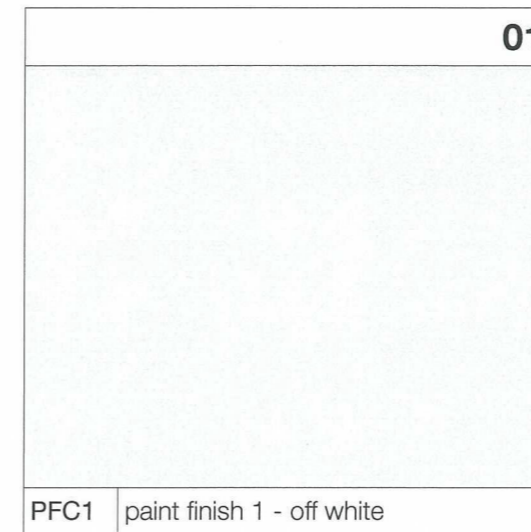


High Street South Elevation - Future  
1:500

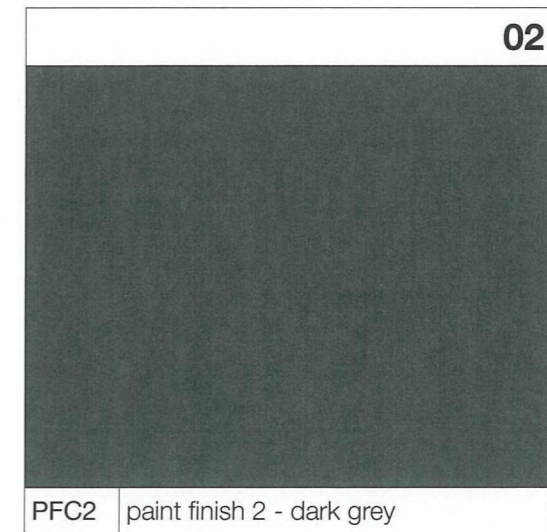
| <p>architect</p> <p><b>integrated DESIGN group</b><br/>architects bathurst   sydney</p> <p>copyright<br/>integratedDESIGNgroup p1<br/>sln.21.955.789.058</p> <p>bathurst office<br/>tel 02 6332 6206<br/>bathurst@idgarchitects.com.au</p> <p>sydney office<br/>tel 02 9754 0150<br/>sydney@idgarchitects.com.au</p> <p>Member<br/>Australian<br/>Institute of<br/>Architects</p> <p>nominated architects<br/>bry mckinnon mgr12073<br/>simon thorne mgr7003</p> |                        | <p><b>finishes</b></p> <table border="0"> <tr> <td>BDRY</td><td>bricklay</td> <td>DPMS</td><td>downpipe &amp; sprinler</td> <td>PFC</td><td>pointed fibre cement</td> </tr> <tr> <td>BOE</td><td>brick on edge</td> <td>EGL</td><td>bleaching ground line</td> <td>PWB</td><td>pointed weatherboard</td> </tr> <tr> <td>BPB</td><td>bagged paint brickwork</td> <td>EMB</td><td>electrical meterboard</td> <td>SC</td><td>solid course</td> </tr> <tr> <td>CCR</td><td>corrugated roof sheet</td> <td>FB</td><td>face brick</td> <td>TC</td><td>timberate</td> </tr> <tr> <td>CF</td><td>coloured face</td> <td>FC</td><td>fibre cement</td> <td>TFB</td><td>timber floor boards</td> </tr> <tr> <td>CFC</td><td>compress. fibre cement</td> <td>FFL</td><td>finished floor level</td> <td>TRC</td><td>terracotta roof tiles</td> </tr> <tr> <td>CONC</td><td>concrete</td> <td>F</td><td>fixed glass</td> <td>V</td><td>vinyl</td> </tr> <tr> <td>CUC</td><td>control joint</td> <td>FGL</td><td>finished ground line</td> <td></td><td></td> </tr> <tr> <td>CJ</td><td>control joint</td> <td>GM</td><td>gas meter</td> <td></td><td></td> </tr> <tr> <td>CT</td><td>carpet</td> <td>HMS</td><td>hot water service</td> <td></td><td></td> </tr> <tr> <td>CRT</td><td>concrete roof tile</td> <td>PB</td><td>plasterboard</td> <td></td><td></td> </tr> <tr> <td>COG</td><td>coloured quad gutter</td> <td>PCR</td><td>pointed cement render</td> <td></td><td></td> </tr> <tr> <td>DP</td><td>downpipe</td> <td>PFD</td><td>pointed face brick</td> <td></td><td></td> </tr> </table> | BDRY                  | bricklay | DPMS                  | downpipe & sprinler | PFC | pointed fibre cement | BOE | brick on edge | EGL | bleaching ground line | PWB | pointed weatherboard | BPB | bagged paint brickwork | EMB | electrical meterboard | SC | solid course | CCR | corrugated roof sheet | FB | face brick | TC | timberate | CF | coloured face | FC | fibre cement | TFB | timber floor boards | CFC | compress. fibre cement | FFL | finished floor level | TRC | terracotta roof tiles | CONC | concrete | F | fixed glass | V | vinyl | CUC | control joint | FGL | finished ground line |  |  | CJ | control joint | GM | gas meter |  |  | CT | carpet | HMS | hot water service |  |  | CRT | concrete roof tile | PB | plasterboard |  |  | COG | coloured quad gutter | PCR | pointed cement render |  |  | DP | downpipe | PFD | pointed face brick |  |  | <p><b>fixtures &amp; levels</b></p> <table border="0"> <tr> <td>b</td><td>basin</td> <td>mhw</td><td>microwave</td> <td>wc</td><td>water closet</td> </tr> <tr> <td>bh</td><td>backhead</td> <td>omh</td><td>overhead</td> <td>wm</td><td>washing machine</td> </tr> <tr> <td>cs</td><td>cavity sliding door</td> <td>p</td><td>pantry</td> <td>vp</td><td>vent pipe</td> </tr> <tr> <td>dry</td><td>dryer</td> <td>ref</td><td>refrigerator</td> <td>uo</td><td>under bench oven</td> </tr> <tr> <td>dww</td><td>dishwasher</td> <td>rh</td><td>rangehood</td> <td>wo</td><td>wall oven</td> </tr> <tr> <td>esh</td><td>external fan</td> <td>sc</td><td>solid core door</td> <td>wm</td><td>water meter</td> </tr> <tr> <td>fr</td><td>fridge</td> <td>sh</td><td>shower</td> <td></td><td></td> </tr> <tr> <td>fw</td><td>floor waste</td> <td>ss</td><td>stainless steel sink</td> <td>rl</td><td>reduced level</td> </tr> <tr> <td>gd</td><td>gated drain</td> <td>st</td><td>stove</td> <td>ff</td><td>finished floor level</td> </tr> <tr> <td>hc</td><td>hot water cove door</td> <td>shwr</td><td>shower</td> <td>tlw</td><td>top of wall</td> </tr> <tr> <td>hr</td><td>handrail</td> <td>t</td><td>tub</td> <td>typ</td><td>typical</td> </tr> <tr> <td>lb</td><td>letterbox</td> <td>tr</td><td>towel rail</td> <td></td><td></td> </tr> <tr> <td>m</td><td>mirror</td> <td>th</td><td>toilet role holder</td> <td></td><td></td> </tr> </table> | b | basin | mhw | microwave | wc | water closet | bh | backhead | omh | overhead | wm | washing machine | cs | cavity sliding door | p | pantry | vp | vent pipe | dry | dryer | ref | refrigerator | uo | under bench oven | dww | dishwasher | rh | rangehood | wo | wall oven | esh | external fan | sc | solid core door | wm | water meter | fr | fridge | sh | shower |  |  | fw | floor waste | ss | stainless steel sink | rl | reduced level | gd | gated drain | st | stove | ff | finished floor level | hc | hot water cove door | shwr | shower | tlw | top of wall | hr | handrail | t | tub | typ | typical | lb | letterbox | tr | towel rail |  |  | m | mirror | th | toilet role holder |  |  | <p><b>general notes</b></p> <ol style="list-style-type: none"> <li>1. figured dimensions take precedence over scaled drawings</li> <li>2. contractors to check and verify all levels datum and dimensions on site</li> <li>3. all materials and workmanship to be in accordance with current written manufacturers instructions local regulations and SAA codes</li> <li>4. conflicting information to be brought to notice of the architect and clarification sought before proceeding with any works</li> <li>5. all drawings are not for construction and are subject to further design development, consultant input, council and legislative requirements.</li> </ol> | <p><b>revision</b></p> <table border="1"> <tr> <th>revision</th> <th>date</th> <th>description</th> </tr> <tr> <td>09/10/15</td> <td>a</td> <td>DA ISSUE</td> </tr> </table> | revision | date | description | 09/10/15 | a | DA ISSUE | <p><b>title</b></p> <p><b>street elevations</b><br/>proposed mixed use development at 344 high street PENRITH for CABE</p> <p>project reference: HEN27390<br/>drawn by: SL   CT   AB<br/>checked by: ST   AE<br/>scale: @ a2</p> <p>DA 0101<br/>issue A</p> <p>0 5 10 15 20m</p> |
|--|------------------------|--|-----------------------|----------|-----------------------|---------------------|-----|----------------------|-----|---------------|-----|-----------------------|-----|----------------------|-----|------------------------|-----|-----------------------|----|--------------|-----|-----------------------|----|------------|----|-----------|----|---------------|----|--------------|-----|---------------------|-----|------------------------|-----|----------------------|-----|-----------------------|------|----------|---|-------------|---|-------|-----|---------------|-----|----------------------|--|--|----|---------------|----|-----------|--|--|----|--------|-----|-------------------|--|--|-----|--------------------|----|--------------|--|--|-----|----------------------|-----|-----------------------|--|--|----|----------|-----|--------------------|--|--|--|---|-------|-----|-----------|----|--------------|----|----------|-----|----------|----|-----------------|----|---------------------|---|--------|----|-----------|-----|-------|-----|--------------|----|------------------|-----|------------|----|-----------|----|-----------|-----|--------------|----|-----------------|----|-------------|----|--------|----|--------|--|--|----|-------------|----|----------------------|----|---------------|----|-------------|----|-------|----|----------------------|----|---------------------|------|--------|-----|-------------|----|----------|---|-----|-----|---------|----|-----------|----|------------|--|--|---|--------|----|--------------------|--|--|--|--|----------|------|-------------|----------|---|----------|--|
| BDRY   | bricklay               | DPMS   | downpipe & sprinler   | PFC      | pointed fibre cement  |                     |     |                      |     |               |     |                       |     |                      |     |                        |     |                       |    |              |     |                       |    |            |    |           |    |               |    |              |     |                     |     |                        |     |                      |     |                       |      |          |   |             |   |       |     |               |     |                      |  |  |    |               |    |           |  |  |    |        |     |                   |  |  |     |                    |    |              |  |  |     |                      |     |                       |  |  |    |          |     |                    |  |  |  |   |       |     |           |    |              |    |          |     |          |    |                 |    |                     |   |        |    |           |     |       |     |              |    |                  |     |            |    |           |    |           |     |              |    |                 |    |             |    |        |    |        |  |  |    |             |    |                      |    |               |    |             |    |       |    |                      |    |                     |      |        |     |             |    |          |   |     |     |         |    |           |    |            |  |  |   |        |    |                    |  |  |  |  |          |      |             |          |   |          |  |
| BOE  | brick on edge          | EGL  | bleaching ground line | PWB      | pointed weatherboard  |                     |     |                      |     |               |     |                       |     |                      |     |                        |     |                       |    |              |     |                       |    |            |    |           |    |               |    |              |     |                     |     |                        |     |                      |     |                       |      |          |   |             |   |       |     |               |     |                      |  |  |    |               |    |           |  |  |    |        |     |                   |  |  |     |                    |    |              |  |  |     |                      |     |                       |  |  |    |          |     |                    |  |  |  |   |       |     |           |    |              |    |          |     |          |    |                 |    |                     |   |        |    |           |     |       |     |              |    |                  |     |            |    |           |    |           |     |              |    |                 |    |             |    |        |    |        |  |  |    |             |    |                      |    |               |    |             |    |       |    |                      |    |                     |      |        |     |             |    |          |   |     |     |         |    |           |    |            |  |  |   |        |    |                    |  |  |  |  |          |      |             |          |   |          |  |
| BPB  | bagged paint brickwork | EMB  | electrical meterboard | SC       | solid course          |                     |     |                      |     |               |     |                       |     |                      |     |                        |     |                       |    |              |     |                       |    |            |    |           |    |               |    |              |     |                     |     |                        |     |                      |     |                       |      |          |   |             |   |       |     |               |     |                      |  |  |    |               |    |           |  |  |    |        |     |                   |  |  |     |                    |    |              |  |  |     |                      |     |                       |  |  |    |          |     |                    |  |  |  |   |       |     |           |    |              |    |          |     |          |    |                 |    |                     |   |        |    |           |     |       |     |              |    |                  |     |            |    |           |    |           |     |              |    |                 |    |             |    |        |    |        |  |  |    |             |    |                      |    |               |    |             |    |       |    |                      |    |                     |      |        |     |             |    |          |   |     |     |         |    |           |    |            |  |  |   |        |    |                    |  |  |  |  |          |      |             |          |   |          |  |
| CCR  | corrugated roof sheet  | FB   | face brick            | TC       | timberate             |                     |     |                      |     |               |     |                       |     |                      |     |                        |     |                       |    |              |     |                       |    |            |    |           |    |               |    |              |     |                     |     |                        |     |                      |     |                       |      |          |   |             |   |       |     |               |     |                      |  |  |    |               |    |           |  |  |    |        |     |                   |  |  |     |                    |    |              |  |  |     |                      |     |                       |  |  |    |          |     |                    |  |  |  |   |       |     |           |    |              |    |          |     |          |    |                 |    |                     |   |        |    |           |     |       |     |              |    |                  |     |            |    |           |    |           |     |              |    |                 |    |             |    |        |    |        |  |  |    |             |    |                      |    |               |    |             |    |       |    |                      |    |                     |      |        |     |             |    |          |   |     |     |         |    |           |    |            |  |  |   |        |    |                    |  |  |  |  |          |      |             |          |   |          |  |
| CF   | coloured face          | FC   | fibre cement          | TFB      | timber floor boards   |                     |     |                      |     |               |     |                       |     |                      |     |                        |     |                       |    |              |     |                       |    |            |    |           |    |               |    |              |     |                     |     |                        |     |                      |     |                       |      |          |   |             |   |       |     |               |     |                      |  |  |    |               |    |           |  |  |    |        |     |                   |  |  |     |                    |    |              |  |  |     |                      |     |                       |  |  |    |          |     |                    |  |  |  |   |       |     |           |    |              |    |          |     |          |    |                 |    |                     |   |        |    |           |     |       |     |              |    |                  |     |            |    |           |    |           |     |              |    |                 |    |             |    |        |    |        |  |  |    |             |    |                      |    |               |    |             |    |       |    |                      |    |                     |      |        |     |             |    |          |   |     |     |         |    |           |    |            |  |  |   |        |    |                    |  |  |  |  |          |      |             |          |   |          |  |
| CFC  | compress. fibre cement | FFL  | finished floor level  | TRC      | terracotta roof tiles |                     |     |                      |     |               |     |                       |     |                      |     |                        |     |                       |    |              |     |                       |    |            |    |           |    |               |    |              |     |                     |     |                        |     |                      |     |                       |      |          |   |             |   |       |     |               |     |                      |  |  |    |               |    |           |  |  |    |        |     |                   |  |  |     |                    |    |              |  |  |     |                      |     |                       |  |  |    |          |     |                    |  |  |  |   |       |     |           |    |              |    |          |     |          |    |                 |    |                     |   |        |    |           |     |       |     |              |    |                  |     |            |    |           |    |           |     |              |    |                 |    |             |    |        |    |        |  |  |    |             |    |                      |    |               |    |             |    |       |    |                      |    |                     |      |        |     |             |    |          |   |     |     |         |    |           |    |            |  |  |   |        |    |                    |  |  |  |  |          |      |             |          |   |          |  |
| CONC   | concrete               | F  | fixed glass           | V        | vinyl                 |                     |     |                      |     |               |     |                       |     |                      |     |                        |     |                       |    |              |     |                       |    |            |    |           |    |               |    |              |     |                     |     |                        |     |                      |     |                       |      |          |   |             |   |       |     |               |     |                      |  |  |    |               |    |           |  |  |    |        |     |                   |  |  |     |                    |    |              |  |  |     |                      |     |                       |  |  |    |          |     |                    |  |  |  |   |       |     |           |    |              |    |          |     |          |    |                 |    |                     |   |        |    |           |     |       |     |              |    |                  |     |            |    |           |    |           |     |              |    |                 |    |             |    |        |    |        |  |  |    |             |    |                      |    |               |    |             |    |       |    |                      |    |                     |      |        |     |             |    |          |   |     |     |         |    |           |    |            |  |  |   |        |    |                    |  |  |  |  |          |      |             |          |   |          |  |
| CUC  | control joint          | FGL  | finished ground line  |          |                       |                     |     |                      |     |               |     |                       |     |                      |     |                        |     |                       |    |              |     |                       |    |            |    |           |    |               |    |              |     |                     |     |                        |     |                      |     |                       |      |          |   |             |   |       |     |               |     |                      |  |  |    |               |    |           |  |  |    |        |     |                   |  |  |     |                    |    |              |  |  |     |                      |     |                       |  |  |    |          |     |                    |  |  |  |   |       |     |           |    |              |    |          |     |          |    |                 |    |                     |   |        |    |           |     |       |     |              |    |                  |     |            |    |           |    |           |     |              |    |                 |    |             |    |        |    |        |  |  |    |             |    |                      |    |               |    |             |    |       |    |                      |    |                     |      |        |     |             |    |          |   |     |     |         |    |           |    |            |  |  |   |        |    |                    |  |  |  |  |          |      |             |          |   |          |  |
| CJ   | control joint          | GM   | gas meter             |          |                       |                     |     |                      |     |               |     |                       |     |                      |     |                        |     |                       |    |              |     |                       |    |            |    |           |    |               |    |              |     |                     |     |                        |     |                      |     |                       |      |          |   |             |   |       |     |               |     |                      |  |  |    |               |    |           |  |  |    |        |     |                   |  |  |     |                    |    |              |  |  |     |                      |     |                       |  |  |    |          |     |                    |  |  |  |   |       |     |           |    |              |    |          |     |          |    |                 |    |                     |   |        |    |           |     |       |     |              |    |                  |     |            |    |           |    |           |     |              |    |                 |    |             |    |        |    |        |  |  |    |             |    |                      |    |               |    |             |    |       |    |                      |    |                     |      |        |     |             |    |          |   |     |     |         |    |           |    |            |  |  |   |        |    |                    |  |  |  |  |          |      |             |          |   |          |  |
| CT   | carpet                 | HMS  | hot water service     |          |                       |                     |     |                      |     |               |     |                       |     |                      |     |                        |     |                       |    |              |     |                       |    |            |    |           |    |               |    |              |     |                     |     |                        |     |                      |     |                       |      |          |   |             |   |       |     |               |     |                      |  |  |    |               |    |           |  |  |    |        |     |                   |  |  |     |                    |    |              |  |  |     |                      |     |                       |  |  |    |          |     |                    |  |  |  |   |       |     |           |    |              |    |          |     |          |    |                 |    |                     |   |        |    |           |     |       |     |              |    |                  |     |            |    |           |    |           |     |              |    |                 |    |             |    |        |    |        |  |  |    |             |    |                      |    |               |    |             |    |       |    |                      |    |                     |      |        |     |             |    |          |   |     |     |         |    |           |    |            |  |  |   |        |    |                    |  |  |  |  |          |      |             |          |   |          |  |
| CRT  | concrete roof tile     | PB   | plasterboard          |          |                       |                     |     |                      |     |               |     |                       |     |                      |     |                        |     |                       |    |              |     |                       |    |            |    |           |    |               |    |              |     |                     |     |                        |     |                      |     |                       |      |          |   |             |   |       |     |               |     |                      |  |  |    |               |    |           |  |  |    |        |     |                   |  |  |     |                    |    |              |  |  |     |                      |     |                       |  |  |    |          |     |                    |  |  |  |   |       |     |           |    |              |    |          |     |          |    |                 |    |                     |   |        |    |           |     |       |     |              |    |                  |     |            |    |           |    |           |     |              |    |                 |    |             |    |        |    |        |  |  |    |             |    |                      |    |               |    |             |    |       |    |                      |    |                     |      |        |     |             |    |          |   |     |     |         |    |           |    |            |  |  |   |        |    |                    |  |  |  |  |          |      |             |          |   |          |  |
| COG  | coloured quad gutter   | PCR  | pointed cement render |          |                       |                     |     |                      |     |               |     |                       |     |                      |     |                        |     |                       |    |              |     |                       |    |            |    |           |    |               |    |              |     |                     |     |                        |     |                      |     |                       |      |          |   |             |   |       |     |               |     |                      |  |  |    |               |    |           |  |  |    |        |     |                   |  |  |     |                    |    |              |  |  |     |                      |     |                       |  |  |    |          |     |                    |  |  |  |   |       |     |           |    |              |    |          |     |          |    |                 |    |                     |   |        |    |           |     |       |     |              |    |                  |     |            |    |           |    |           |     |              |    |                 |    |             |    |        |    |        |  |  |    |             |    |                      |    |               |    |             |    |       |    |                      |    |                     |      |        |     |             |    |          |   |     |     |         |    |           |    |            |  |  |   |        |    |                    |  |  |  |  |          |      |             |          |   |          |  |
| DP   | downpipe               | PFD  | pointed face brick    |          |                       |                     |     |                      |     |               |     |                       |     |                      |     |                        |     |                       |    |              |     |                       |    |            |    |           |    |               |    |              |     |                     |     |                        |     |                      |     |                       |      |          |   |             |   |       |     |               |     |                      |  |  |    |               |    |           |  |  |    |        |     |                   |  |  |     |                    |    |              |  |  |     |                      |     |                       |  |  |    |          |     |                    |  |  |  |   |       |     |           |    |              |    |          |     |          |    |                 |    |                     |   |        |    |           |     |       |     |              |    |                  |     |            |    |           |    |           |     |              |    |                 |    |             |    |        |    |        |  |  |    |             |    |                      |    |               |    |             |    |       |    |                      |    |                     |      |        |     |             |    |          |   |     |     |         |    |           |    |            |  |  |   |        |    |                    |  |  |  |  |          |      |             |          |   |          |  |
| b  | basin                  | mhw  | microwave             | wc       | water closet          |                     |     |                      |     |               |     |                       |     |                      |     |                        |     |                       |    |              |     |                       |    |            |    |           |    |               |    |              |     |                     |     |                        |     |                      |     |                       |      |          |   |             |   |       |     |               |     |                      |  |  |    |               |    |           |  |  |    |        |     |                   |  |  |     |                    |    |              |  |  |     |                      |     |                       |  |  |    |          |     |                    |  |  |  |   |       |     |           |    |              |    |          |     |          |    |                 |    |                     |   |        |    |           |     |       |     |              |    |                  |     |            |    |           |    |           |     |              |    |                 |    |             |    |        |    |        |  |  |    |             |    |                      |    |               |    |             |    |       |    |                      |    |                     |      |        |     |             |    |          |   |     |     |         |    |           |    |            |  |  |   |        |    |                    |  |  |  |  |          |      |             |          |   |          |  |
| bh   | backhead               | omh  | overhead              | wm       | washing machine       |                     |     |                      |     |               |     |                       |     |                      |     |                        |     |                       |    |              |     |                       |    |            |    |           |    |               |    |              |     |                     |     |                        |     |                      |     |                       |      |          |   |             |   |       |     |               |     |                      |  |  |    |               |    |           |  |  |    |        |     |                   |  |  |     |                    |    |              |  |  |     |                      |     |                       |  |  |    |          |     |                    |  |  |  |   |       |     |           |    |              |    |          |     |          |    |                 |    |                     |   |        |    |           |     |       |     |              |    |                  |     |            |    |           |    |           |     |              |    |                 |    |             |    |        |    |        |  |  |    |             |    |                      |    |               |    |             |    |       |    |                      |    |                     |      |        |     |             |    |          |   |     |     |         |    |           |    |            |  |  |   |        |    |                    |  |  |  |  |          |      |             |          |   |          |  |
| cs   | cavity sliding door    | p  | pantry                | vp       | vent pipe             |                     |     |                      |     |               |     |                       |     |                      |     |                        |     |                       |    |              |     |                       |    |            |    |           |    |               |    |              |     |                     |     |                        |     |                      |     |                       |      |          |   |             |   |       |     |               |     |                      |  |  |    |               |    |           |  |  |    |        |     |                   |  |  |     |                    |    |              |  |  |     |                      |     |                       |  |  |    |          |     |                    |  |  |  |   |       |     |           |    |              |    |          |     |          |    |                 |    |                     |   |        |    |           |     |       |     |              |    |                  |     |            |    |           |    |           |     |              |    |                 |    |             |    |        |    |        |  |  |    |             |    |                      |    |               |    |             |    |       |    |                      |    |                     |      |        |     |             |    |          |   |     |     |         |    |           |    |            |  |  |   |        |    |                    |  |  |  |  |          |      |             |          |   |          |  |
| dry  | dryer                  | ref  | refrigerator          | uo       | under bench oven      |                     |     |                      |     |               |     |                       |     |                      |     |                        |     |                       |    |              |     |                       |    |            |    |           |    |               |    |              |     |                     |     |                        |     |                      |     |                       |      |          |   |             |   |       |     |               |     |                      |  |  |    |               |    |           |  |  |    |        |     |                   |  |  |     |                    |    |              |  |  |     |                      |     |                       |  |  |    |          |     |                    |  |  |  |   |       |     |           |    |              |    |          |     |          |    |                 |    |                     |   |        |    |           |     |       |     |              |    |                  |     |            |    |           |    |           |     |              |    |                 |    |             |    |        |    |        |  |  |    |             |    |                      |    |               |    |             |    |       |    |                      |    |                     |      |        |     |             |    |          |   |     |     |         |    |           |    |            |  |  |   |        |    |                    |  |  |  |  |          |      |             |          |   |          |  |
| dww  | dishwasher             | rh   | rangehood             | wo       | wall oven             |                     |     |                      |     |               |     |                       |     |                      |     |                        |     |                       |    |              |     |                       |    |            |    |           |    |               |    |              |     |                     |     |                        |     |                      |     |                       |      |          |   |             |   |       |     |               |     |                      |  |  |    |               |    |           |  |  |    |        |     |                   |  |  |     |                    |    |              |  |  |     |                      |     |                       |  |  |    |          |     |                    |  |  |  |   |       |     |           |    |              |    |          |     |          |    |                 |    |                     |   |        |    |           |     |       |     |              |    |                  |     |            |    |           |    |           |     |              |    |                 |    |             |    |        |    |        |  |  |    |             |    |                      |    |               |    |             |    |       |    |                      |    |                     |      |        |     |             |    |          |   |     |     |         |    |           |    |            |  |  |   |        |    |                    |  |  |  |  |          |      |             |          |   |          |  |
| esh  | external fan           | sc   | solid core door       | wm       | water meter           |                     |     |                      |     |               |     |                       |     |                      |     |                        |     |                       |    |              |     |                       |    |            |    |           |    |               |    |              |     |                     |     |                        |     |                      |     |                       |      |          |   |             |   |       |     |               |     |                      |  |  |    |               |    |           |  |  |    |        |     |                   |  |  |     |                    |    |              |  |  |     |                      |     |                       |  |  |    |          |     |                    |  |  |  |   |       |     |           |    |              |    |          |     |          |    |                 |    |                     |   |        |    |           |     |       |     |              |    |                  |     |            |    |           |    |           |     |              |    |                 |    |             |    |        |    |        |  |  |    |             |    |                      |    |               |    |             |    |       |    |                      |    |                     |      |        |     |             |    |          |   |     |     |         |    |           |    |            |  |  |   |        |    |                    |  |  |  |  |          |      |             |          |   |          |  |
| fr   | fridge                 | sh   | shower                |          |                       |                     |     |                      |     |               |     |                       |     |                      |     |                        |     |                       |    |              |     |                       |    |            |    |           |    |               |    |              |     |                     |     |                        |     |                      |     |                       |      |          |   |             |   |       |     |               |     |                      |  |  |    |               |    |           |  |  |    |        |     |                   |  |  |     |                    |    |              |  |  |     |                      |     |                       |  |  |    |          |     |                    |  |  |  |   |       |     |           |    |              |    |          |     |          |    |                 |    |                     |   |        |    |           |     |       |     |              |    |                  |     |            |    |           |    |           |     |              |    |                 |    |             |    |        |    |        |  |  |    |             |    |                      |    |               |    |             |    |       |    |                      |    |                     |      |        |     |             |    |          |   |     |     |         |    |           |    |            |  |  |   |        |    |                    |  |  |  |  |          |      |             |          |   |          |  |
| fw   | floor waste            | ss   | stainless steel sink  | rl       | reduced level         |                     |     |                      |     |               |     |                       |     |                      |     |                        |     |                       |    |              |     |                       |    |            |    |           |    |               |    |              |     |                     |     |                        |     |                      |     |                       |      |          |   |             |   |       |     |               |     |                      |  |  |    |               |    |           |  |  |    |        |     |                   |  |  |     |                    |    |              |  |  |     |                      |     |                       |  |  |    |          |     |                    |  |  |  |   |       |     |           |    |              |    |          |     |          |    |                 |    |                     |   |        |    |           |     |       |     |              |    |                  |     |            |    |           |    |           |     |              |    |                 |    |             |    |        |    |        |  |  |    |             |    |                      |    |               |    |             |    |       |    |                      |    |                     |      |        |     |             |    |          |   |     |     |         |    |           |    |            |  |  |   |        |    |                    |  |  |  |  |          |      |             |          |   |          |  |
| gd   | gated drain            | st   | stove                 | ff       | finished floor level  |                     |     |                      |     |               |     |                       |     |                      |     |                        |     |                       |    |              |     |                       |    |            |    |           |    |               |    |              |     |                     |     |                        |     |                      |     |                       |      |          |   |             |   |       |     |               |     |                      |  |  |    |               |    |           |  |  |    |        |     |                   |  |  |     |                    |    |              |  |  |     |                      |     |                       |  |  |    |          |     |                    |  |  |  |   |       |     |           |    |              |    |          |     |          |    |                 |    |                     |   |        |    |           |     |       |     |              |    |                  |     |            |    |           |    |           |     |              |    |                 |    |             |    |        |    |        |  |  |    |             |    |                      |    |               |    |             |    |       |    |                      |    |                     |      |        |     |             |    |          |   |     |     |         |    |           |    |            |  |  |   |        |    |                    |  |  |  |  |          |      |             |          |   |          |  |
| hc   | hot water cove door    | shwr   | shower                | tlw      | top of wall           |                     |     |                      |     |               |     |                       |     |                      |     |                        |     |                       |    |              |     |                       |    |            |    |           |    |               |    |              |     |                     |     |                        |     |                      |     |                       |      |          |   |             |   |       |     |               |     |                      |  |  |    |               |    |           |  |  |    |        |     |                   |  |  |     |                    |    |              |  |  |     |                      |     |                       |  |  |    |          |     |                    |  |  |  |   |       |     |           |    |              |    |          |     |          |    |                 |    |                     |   |        |    |           |     |       |     |              |    |                  |     |            |    |           |    |           |     |              |    |                 |    |             |    |        |    |        |  |  |    |             |    |                      |    |               |    |             |    |       |    |                      |    |                     |      |        |     |             |    |          |   |     |     |         |    |           |    |            |  |  |   |        |    |                    |  |  |  |  |          |      |             |          |   |          |  |
| hr   | handrail               | t  | tub                   | typ      | typical               |                     |     |                      |     |               |     |                       |     |                      |     |                        |     |                       |    |              |     |                       |    |            |    |           |    |               |    |              |     |                     |     |                        |     |                      |     |                       |      |          |   |             |   |       |     |               |     |                      |  |  |    |               |    |           |  |  |    |        |     |                   |  |  |     |                    |    |              |  |  |     |                      |     |                       |  |  |    |          |     |                    |  |  |  |   |       |     |           |    |              |    |          |     |          |    |                 |    |                     |   |        |    |           |     |       |     |              |    |                  |     |            |    |           |    |           |     |              |    |                 |    |             |    |        |    |        |  |  |    |             |    |                      |    |               |    |             |    |       |    |                      |    |                     |      |        |     |             |    |          |   |     |     |         |    |           |    |            |  |  |   |        |    |                    |  |  |  |  |          |      |             |          |   |          |  |
| lb   | letterbox              | tr   | towel rail            |          |                       |                     |     |                      |     |               |     |                       |     |                      |     |                        |     |                       |    |              |     |                       |    |            |    |           |    |               |    |              |     |                     |     |                        |     |                      |     |                       |      |          |   |             |   |       |     |               |     |                      |  |  |    |               |    |           |  |  |    |        |     |                   |  |  |     |                    |    |              |  |  |     |                      |     |                       |  |  |    |          |     |                    |  |  |  |   |       |     |           |    |              |    |          |     |          |    |                 |    |                     |   |        |    |           |     |       |     |              |    |                  |     |            |    |           |    |           |     |              |    |                 |    |             |    |        |    |        |  |  |    |             |    |                      |    |               |    |             |    |       |    |                      |    |                     |      |        |     |             |    |          |   |     |     |         |    |           |    |            |  |  |   |        |    |                    |  |  |  |  |          |      |             |          |   |          |  |
| m  | mirror                 | th   | toilet role holder    |          |                       |                     |     |                      |     |               |     |                       |     |                      |     |                        |     |                       |    |              |     |                       |    |            |    |           |    |               |    |              |     |                     |     |                        |     |                      |     |                       |      |          |   |             |   |       |     |               |     |                      |  |  |    |               |    |           |  |  |    |        |     |                   |  |  |     |                    |    |              |  |  |     |                      |     |                       |  |  |    |          |     |                    |  |  |  |   |       |     |           |    |              |    |          |     |          |    |                 |    |                     |   |        |    |           |     |       |     |              |    |                  |     |            |    |           |    |           |     |              |    |                 |    |             |    |        |    |        |  |  |    |             |    |                      |    |               |    |             |    |       |    |                      |    |                     |      |        |     |             |    |          |   |     |     |         |    |           |    |            |  |  |   |        |    |                    |  |  |  |  |          |      |             |          |   |          |  |
| revision   | date                   | description  |                       |          |                       |                     |     |                      |     |               |     |                       |     |                      |     |                        |     |                       |    |              |     |                       |    |            |    |           |    |               |    |              |     |                     |     |                        |     |                      |     |                       |      |          |   |             |   |       |     |               |     |                      |  |  |    |               |    |           |  |  |    |        |     |                   |  |  |     |                    |    |              |  |  |     |                      |     |                       |  |  |    |          |     |                    |  |  |  |   |       |     |           |    |              |    |          |     |          |    |                 |    |                     |   |        |    |           |     |       |     |              |    |                  |     |            |    |           |    |           |     |              |    |                 |    |             |    |        |    |        |  |  |    |             |    |                      |    |               |    |             |    |       |    |                      |    |                     |      |        |     |             |    |          |   |     |     |         |    |           |    |            |  |  |   |        |    |                    |  |  |  |  |          |      |             |          |   |          |  |
| 09/10/15   | a                      | DA ISSUE   |                       |          |                       |                     |     |                      |     |               |     |                       |     |                      |     |                        |     |                       |    |              |     |                       |    |            |    |           |    |               |    |              |     |                     |     |                        |     |                      |     |                       |      |          |   |             |   |       |     |               |     |                      |  |  |    |               |    |           |  |  |    |        |     |                   |  |  |     |                    |    |              |  |  |     |                      |     |                       |  |  |    |          |     |                    |  |  |  |   |       |     |           |    |              |    |          |     |          |    |                 |    |                     |   |        |    |           |     |       |     |              |    |                  |     |            |    |           |    |           |     |              |    |                 |    |             |    |        |    |        |  |  |    |             |    |                      |    |               |    |             |    |       |    |                      |    |                     |      |        |     |             |    |          |   |     |     |         |    |           |    |            |  |  |   |        |    |                    |  |  |  |  |          |      |             |          |   |          |  |



1 | Front Finishes  
1:251.39



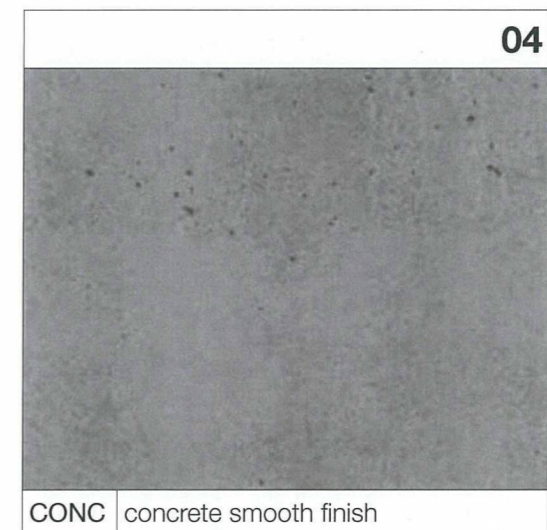
PFC1 | paint finish 1 - off white



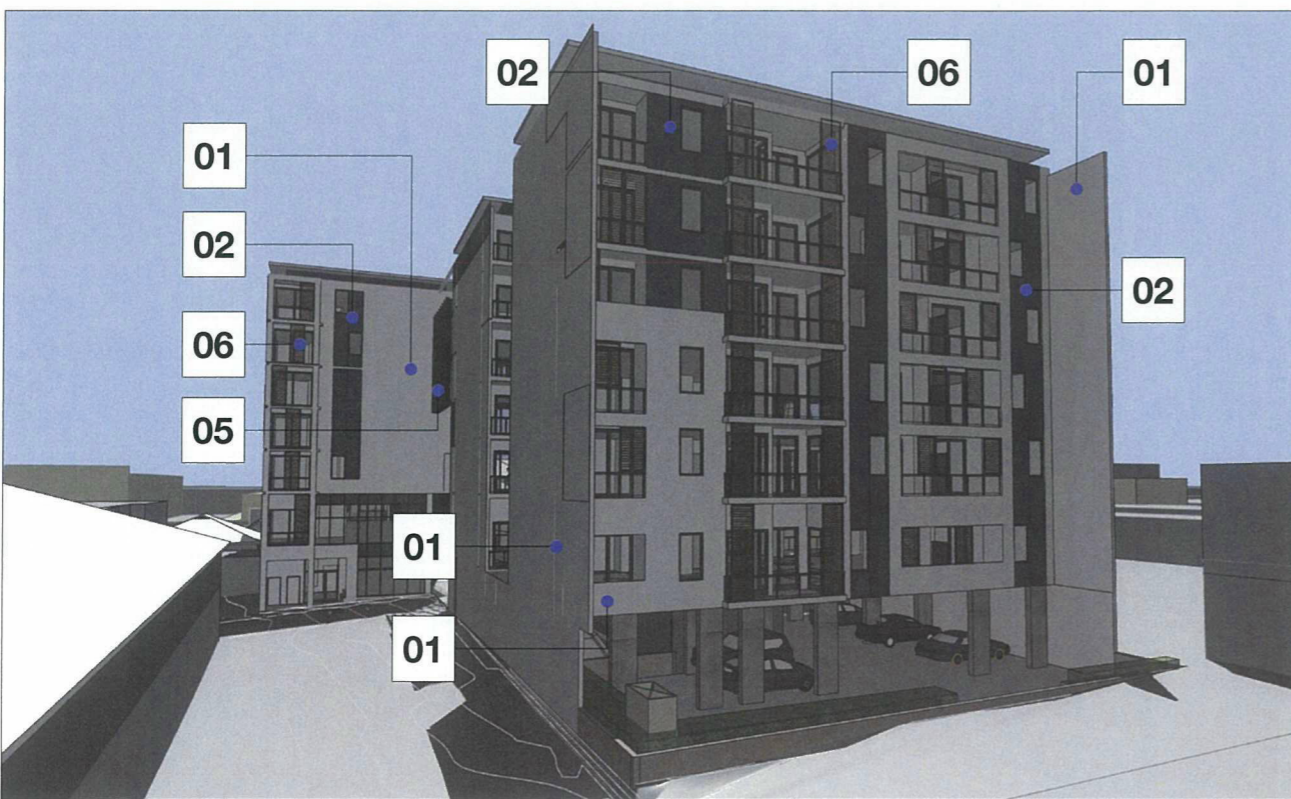
PFC2 | paint finish 2 - dark grey



TF | 'rusted steel' paint finish or similar



CONC | concrete smooth finish



2 | north elevation  
1:250

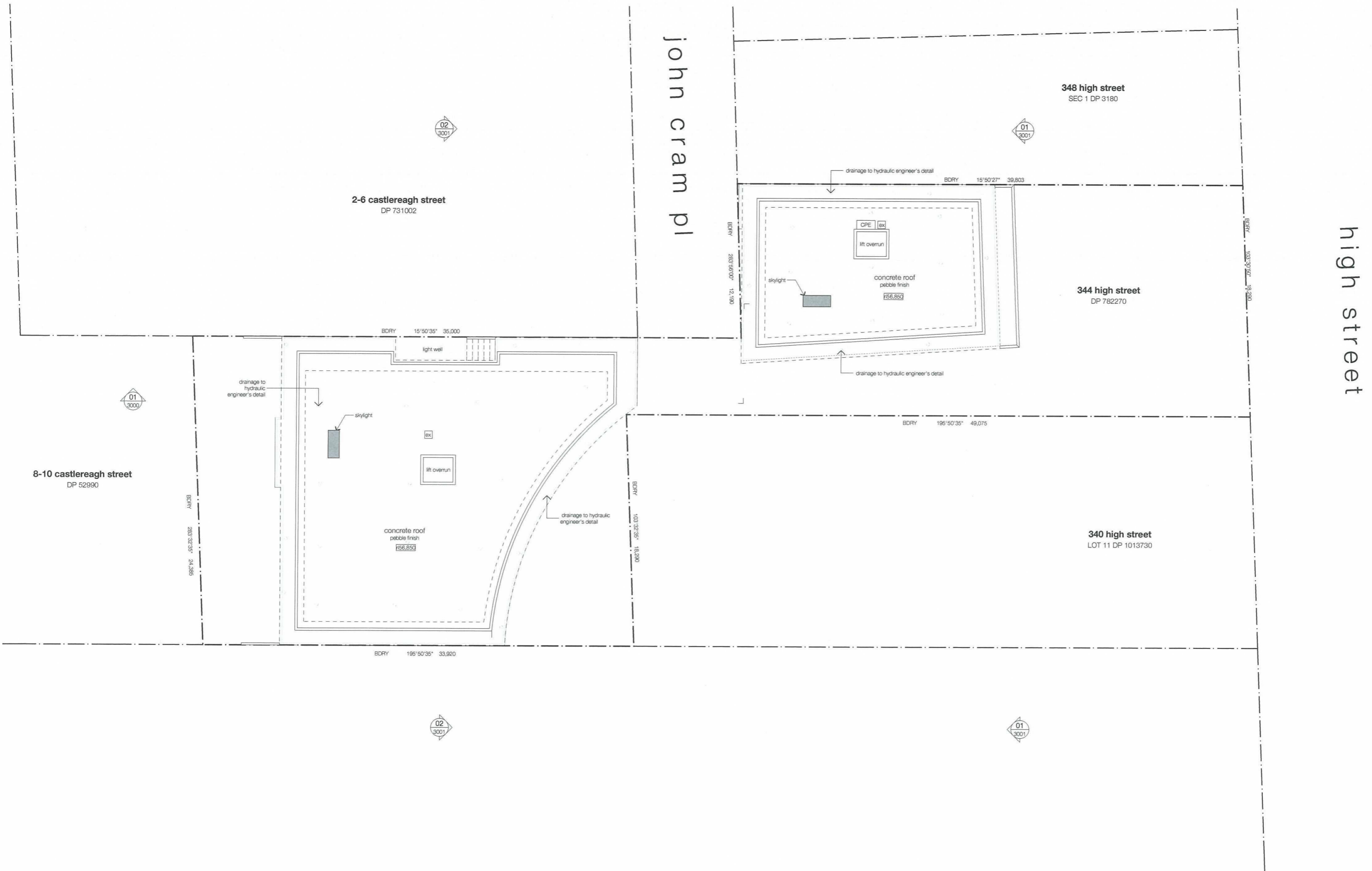


SS1 | FC vertical blades with 'rusted steel' paint finish or similar



SS2 | solar sunshade 2 - louvre screen 'rusted steel' paint finish or similar

| architect  | finishes  | fixtures & levels  | general notes   | revision                   | title  |
|--|---|--|---|----------------------------|--|
| <p>integrated DESIGN group<br/>architects bathurst   sydney</p> <p>copyright<br/>integratedDESIGNgroup p1<br/>abin 21 905 789 056</p> <p>member<br/>Australian<br/>Institute of<br/>Architects</p> <p>sydney office<br/>02 9764 6100<br/>sydney@idgarchitects.com.au</p> <p>bathurst office<br/>02 6332 0206<br/>bathurst@idgarchitects.com.au</p> <p>nominated architects<br/>sally mcnamara eqp18273<br/>sarah thorne eqp17363</p> | <p>BDRY boundary</p> <p>BDE brick on edge</p> <p>BPB bagged paint brickwork</p> <p>COR corrugated roof sheet</p> <p>CF colorbond fascia</p> <p>CFC compress. fibre cement</p> <p>CCNC concrete</p> <p>CJ control joint</p> <p>CT ceramic tile</p> <p>CRT carpet</p> <p>CRTF concrete roof tile</p> <p>COG colorbond quad gutter</p> <p>DP downpipe</p> <p>DPBS downpipe &amp; spreader</p> <p>EGL existing ground line</p> <p>EMB electrical meterboard</p> <p>FB face brick</p> <p>FC fibre cement</p> <p>FFL finished floor level</p> <p>FGL finished ground line</p> <p>GM gas meter</p> <p>HWS hot water service</p> <p>PB plasterboard</p> <p>PCR painted cement render</p> <p>PCD painted face brick</p> <p>PFC painted fibre cement</p> <p>PWB painted weatherboard</p> <p>SC render course</p> <p>TC timbercrete</p> <p>TFC timber floor boards</p> <p>TRC terracotta roof tiles</p> <p>V vinyl</p> | <p>b basin</p> <p>bh bathhead</p> <p>cb cavity sliding door</p> <p>cs dryer</p> <p>dw dishwasher</p> <p>exh exhaust fan</p> <p>fr freezer</p> <p>fw floor waste</p> <p>gd grated drain</p> <p>hc hot water core door</p> <p>hr handrail</p> <p>lb letterbox</p> <p>m mirror</p> <p>mhw microwave</p> <p>o/h overhead</p> <p>o/h pantry</p> <p>ref refrigerator</p> <p>rh rangehood</p> <p>sc solid core door</p> <p>sh cupboard</p> <p>ss stainless steel sink</p> <p>st stove</p> <p>shwr shower</p> <p>td tub</p> <p>tr towel rail</p> <p>trh toilet role holder</p> <p>wc water cluster</p> <p>wm washing machine</p> <p>wp waste pipe</p> <p>uo under bench oven</p> <p>wo wall oven</p> <p>wtr water meter</p> <p>rl reduced level</p> <p>ri finished floor level</p> <p>top of wall</p> <p>typ typical</p> | <p>1. figured dimensions take precedence over scaled drawings</p> <p>2. contractors to check and verify all levels datum and dimensions on site</p> <p>3. all materials and workmanship to be in accordance with current written manufacturers instructions local regulations and SAA codes</p> <p>4. conflicting information to be brought to notice of the architect and clarification sought before proceeding with any works</p> <p>5. all drawings are not for construction and are subject to further design development, consultant input, council and legislative requirements.</p> | <p>09/10/15 a DA ISSUE</p> | <p>external finishes schedule</p> <p>proposed mixed use development at 344 high street PENRITH for CABE</p> <p>project reference: HEN27390</p> <p>drawn by: SL   CT   AB</p> <p>checked by: ST   AE</p> <p>scale: nts @ a2</p> <p>DA 9600</p> <p>issue A</p> |



architect

integrated DESIGN group  
architects bathurst | sydney



copyright  
integratedDESIGNgroup pt  
ltd 01 995 780 056  
nominated architects  
lory mcduffy reg# 6273  
simon thorne reg# 7003  
bathurst office  
tel 02 6332 6206  
bathurst@idgarchitects.com.au  
sydney office  
tel 02 9764 6100  
sydney@idgarchitects.com.au

finishes

|      |                         |      |                       |     |                      |
|------|-------------------------|------|-----------------------|-----|----------------------|
| BDRY | boundary                | DP&S | downpipe & sower      | PFC | printed fibre cement |
| BOE  | brick on edge           | EGL  | existing ground line  | PWB | printed weatherboard |
| BPB  | bagged paint brickwork  | EMB  | electrical meterboard | SC  | solid course         |
| CCR  | corrugated roof sheet   | FB   | face brick            | TC  | timbercrete          |
| CP   | coloured face           | FC   | fine cement           | TFB | timber floor boards  |
| CFC  | curbstone, fibre cement | FFL  | finished floor level  | TRC | terrace roof tiles   |
| CONC | concrete                | F    | fixed glass           | V   | verge                |
| CJ   | control joint           | FGL  | finished ground line  |     |                      |
| CT   | curtain tile            | GM   | gas meter             |     |                      |
| CRT  | curb                    | HMS  | hot water services    |     |                      |
| CRT  | concrete roof tile      | PB   | plasterboard          |     |                      |
| COG  | concrete gully          | PCR  | printed cement render |     |                      |
| DP   | downpipe                | PFD  | printed face brick    |     |                      |

fixtures & levels

|     |                     |      |                      |     |                      |
|-----|---------------------|------|----------------------|-----|----------------------|
| b   | basin               | mw   | microwave            | wc  | water closet         |
| bh  | bulkhead            | oh   | overhead             | wm  | washing machine      |
| cs  | cavity sliding door | p    | pantry               | vp  | vent pipe            |
| dry | dryer               | ref  | refrigerator         | uo  | under bench oven     |
| dw  | dishwasher          | rh   | ridgeboard           | wo  | wall oven            |
| exh | extract fan         | sc   | solid core door      | wm  | water meter          |
| fr  | fridge              | sh   | shop holder          |     |                      |
| fw  | floor waste         | ss   | stainless steel sink | rl  | reduced level        |
| gd  | garden drain        | st   | stove                | fl  | finished floor level |
| tc  | timber core door    | shwr | shower               | tlw | top of wall          |
| hr  | hurler              | hub  | hub                  | typ | typical              |
| lb  | letterbox           | t    | level rail           |     |                      |
| m   | mirror              | trh  | trailer rail height  |     |                      |

general notes

1. figured dimensions take precedence over scaled drawings
2. contractors to check and verify all levels datum and dimensions on site
3. all materials and workmanship to be in accordance with current written manufacturers instructions local regulations and SAA codes
4. conflicting information to be brought to notice of the architect and clarification sought before proceeding with any works
5. all drawings are not for construction and are subject to further design development, consultant input, council and legislative requirements.

revision

|          |   |                                       |
|----------|---|---------------------------------------|
| 20/05/15 | a | preliminary issue to consultants      |
| 05/06/15 | b | preliminary issue to consultants      |
| 16/06/15 | c | issue to consultants for coordination |
| 26/06/15 | d | issue for client review               |
| 26/06/15 | e | issue for consultant co-ordination    |
| 06/10/15 | f | DA ISSUE                              |

title

**roof plan**  
proposed mixed use development at 344 high street PENRITH for CABE  
project reference: HEN27390  
drawn by: SL | CT | AB  
checked by: ST | AE  
scale: 1:200 @ a2  
DA 1107  
issue F

preliminary not for construction

roof level  
RL +56,850

level 6  
RL +53,700

level 5  
RL +50,550

level 4  
RL +47,400

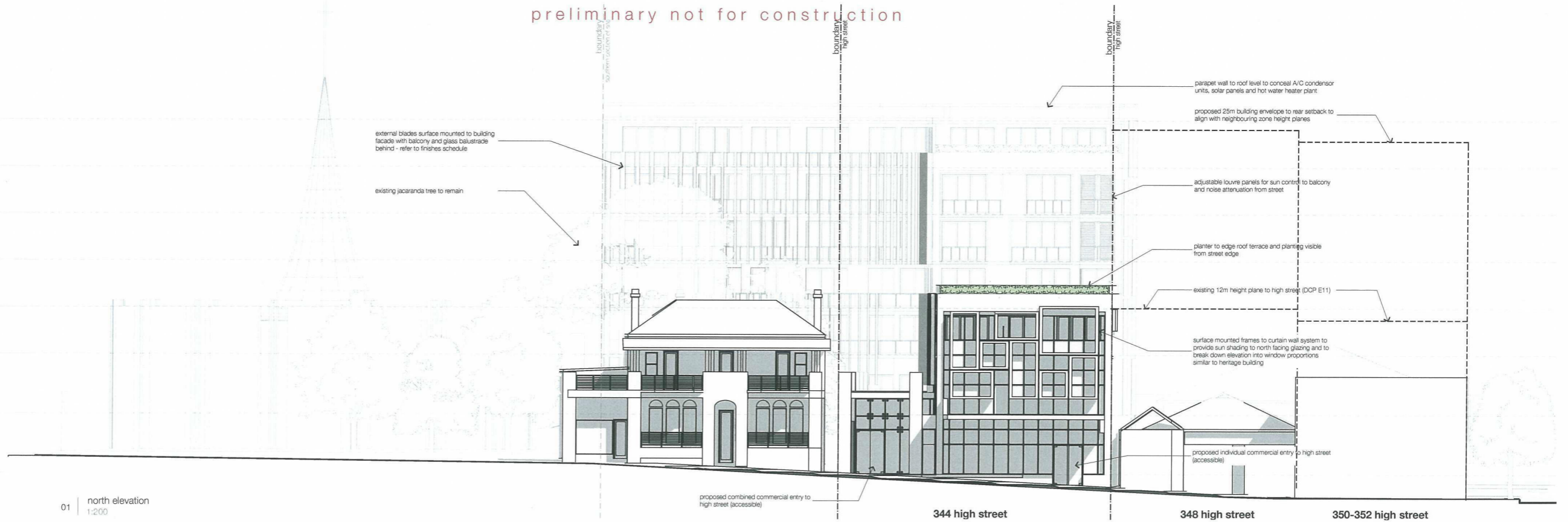
level 3  
RL +44,250

level 2  
RL +41,100

level 1  
RL +37,100

ground level  
RL +33,100

01 | north elevation  
1:200



proposed combined commercial entry to high street (accessible)

344 high street

348 high street

350-352 high street



02 | south elevation  
1:200

architect

integrated DESIGN group  
architects bathurst | sydney

| finishes |                        | fixtures & levels |                       |
|----------|------------------------|-------------------|-----------------------|
| BDRY     | boundary               | DP&S              | downpipe & spreader   |
| BOE      | brick on edge          | EGL               | existing ground line  |
| BPB      | bagged paint brickwork | EMB               | electrical meterboard |
| CCR      | corrugated roof sheet  | FB                | face brick            |
| CF       | concrete slab          | FC                | floor cement          |
| CFC      | concrete, fibre cement | FLL               | finished floor level  |
| CONC     | concrete               | F                 | fixed glass           |
| CJ       | control joint          | FGL               | finished ground line  |
| CT       | concrete tile          | GM                | gas meter             |
| CPT      | carpet                 | HWS               | hot water services    |
| CRT      | concrete roof tile     | PB                | plasterboard          |
| CQG      | concrete quad gutter   | PCR               | painted cement render |
| DP       | downpipe               | PPD               | painted face brick    |
| b        | basin                  | PFC               | painted fibre cement  |
| bh       | bulkhead               | PWB               | painted weatherboard  |
| cs       | cavity sliding door    | SC                | solid course          |
| dry      | dryer                  | TC                | terrace               |
| dw       | dishwasher             | TFB               | timber floor boards   |
| exh      | extract fan            | TRC               | terrace roof tiles    |
| fr       | fridge                 | V                 | vinyl                 |
| fw       | four waste             |                   |                       |
| gd       | ground drain           |                   |                       |
| hc       | hollow core slab       |                   |                       |
| hr       | handrail               |                   |                       |
| lb       | letterbox              |                   |                       |
| m        | minor                  |                   |                       |
| mw       | microwave              |                   |                       |
| oh       | overhead               |                   |                       |
| p        | pantry                 |                   |                       |
| ref      | refrigerator           |                   |                       |
| rh       | range hood             |                   |                       |
| sc       | solid core door        |                   |                       |
| sh       | shop hoist             |                   |                       |
| ss       | stainless steel sink   |                   |                       |
| st       | stove                  |                   |                       |
| shwr     | shower                 |                   |                       |
| t        | tap                    |                   |                       |
| tr       | towel rail             |                   |                       |
| trh      | towel rack inside      |                   |                       |
| wc       | water closet           |                   |                       |
| wm       | washing machine        |                   |                       |
| vp       | vent pipe              |                   |                       |
| uo       | under bench oven       |                   |                       |
| wo       | wall oven              |                   |                       |
| wm       | water meter            |                   |                       |

general notes

1. figured dimensions take precedence over scaled drawings
2. contractors to check and verify all levels datum and dimensions on site
3. all materials and workmanship to be in accordance with current written manufacturers instructions local regulations and SAA codes
4. conflicting information to be brought to notice of the architect and clarification sought before proceeding with any works
5. all drawings are not for construction and are subject to further design development, consultant input, council and legislative requirements.

revision

| date     | by | description                        |
|----------|----|------------------------------------|
| 26/06/15 | a  | issue for client review            |
| 26/06/15 | b  | issue for consultant co-ordination |
| 09/10/15 | c  | DA ISSUE                           |
| 04/03/16 | d  | revised DA ISSUE                   |

title

north and south elevations  
proposed mixed use development at 344 high street PENRITH for CABE

project reference: HEN27390  
drawn by: SL | CT | AB  
checked by: ST | AE  
scale: 1:200 @ a2

