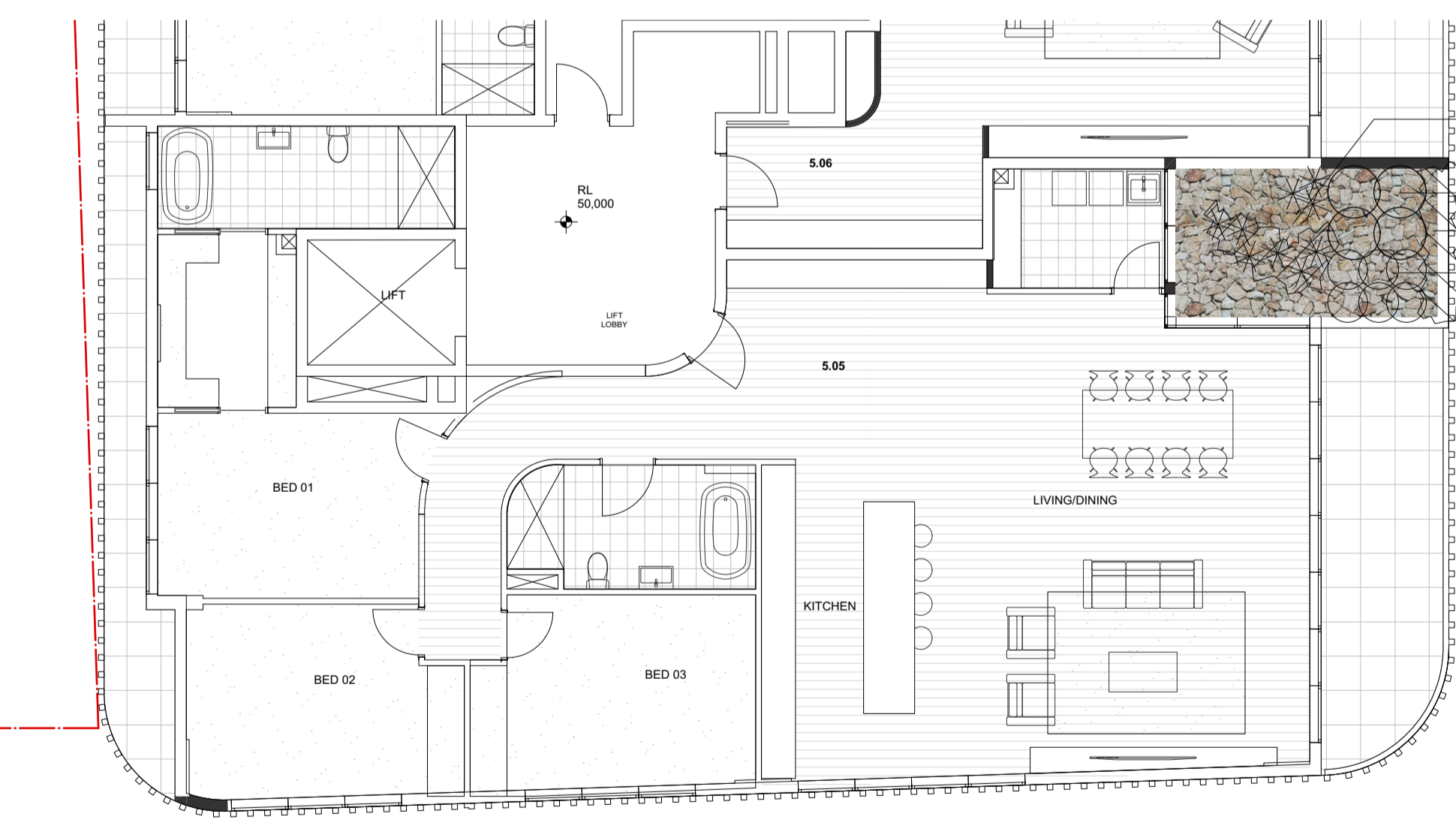
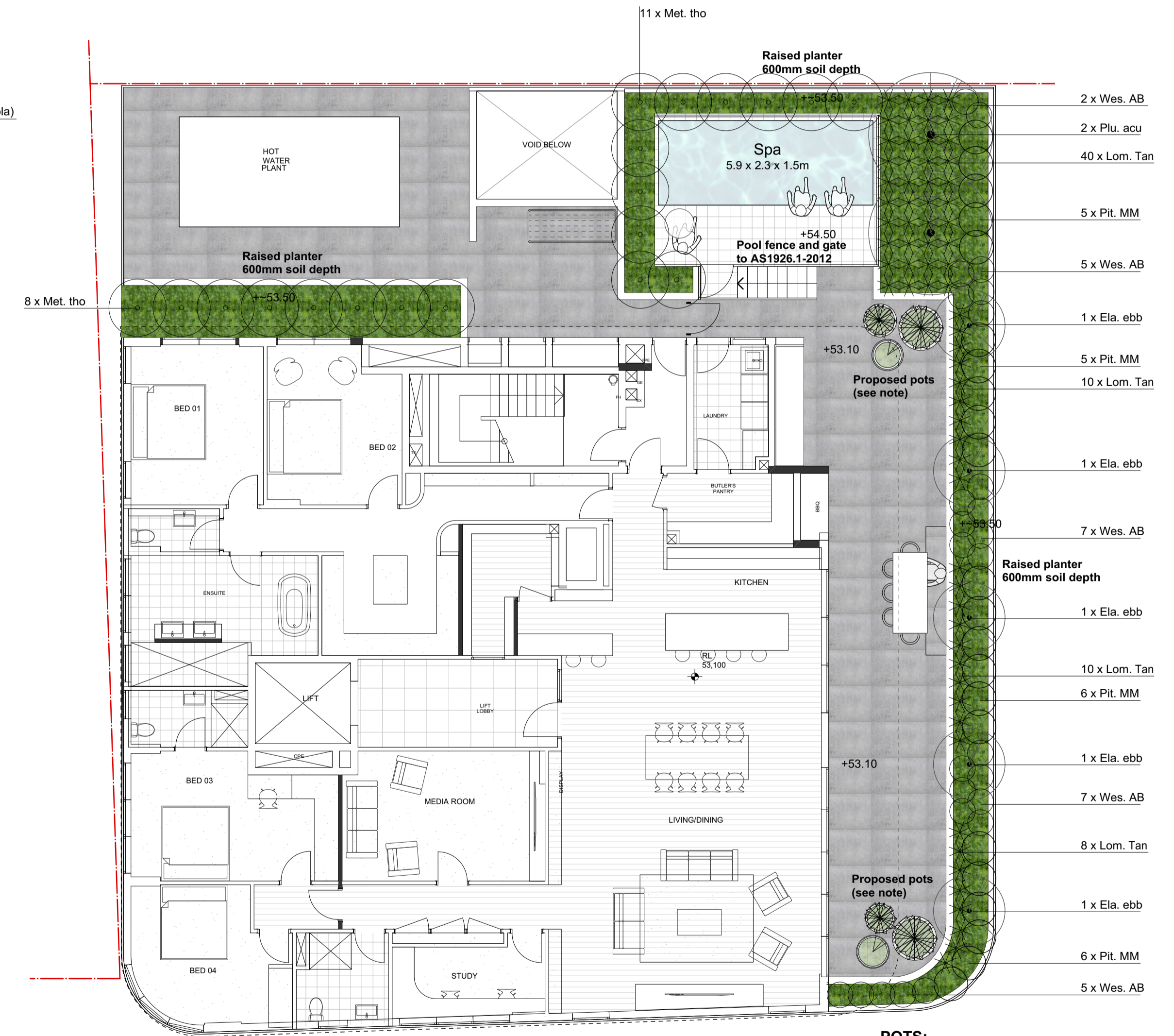


1 BUILDING A: LEVEL 3  
SCALE 1:100@A1



2 BUILDING A: LEVEL 5  
SCALE 1:100@A1



3 BUILDING A: LEVEL 6  
SCALE 1:100@A1

KEY	SPECIES	COMMON NAME	MATURE HEIGHT	SPACING	QTY	POT SIZE
<b>LEVEL 3</b>						
Cra. arb	<i>Crassula arborescens</i>	Crassula	0.8m	As shown	26	5L
Dia. cae	<i>Diarella caerulea</i>	Flax Lily	0.8m	4/sq.m	58	140mm pot
Bes. yuc	<i>Beschorneria yuccoides</i>	Mexican Lily	1.5m	As shown	20	25L
Epi. aur	<i>Euphorbia aureum</i>	Devil's Ivy	spillover	3/m	20	140mm pot
Har. vio	<i>Hardenbergia violacea</i>	False Sarsparilla	scrambler	2/sqm	20	140mm pot
Hib. Rub	<i>Hibiscus 'Rubra'</i>	Red Cottonwood	4-6m	As shown	8	45L
Hib. sca	<i>Hibbertia scandens</i>	Guinea Flower	g'cover	2/sqm	20	140mm pot
Lag. Yum	<i>Lagerstroemia 'Yuma'</i>	Tuckeroo	4m	As shown	2	45L
Lom. Tan	<i>Lomandra 'Tanika'</i>	Mat Rush	0.8m	3/sq.m	8	140mm pot
Lom. Kat	<i>Lomandra 'Katrinus'</i>	Mat Rush	1m	2/sq.m	48	140mm pot
Par. tri	<i>Parthenocissus tricuspidata</i>	Virginia Creeper	climber	As shown	10	140mm pot
Phi. Xan	<i>Philodendron 'Xanadu'</i>	Xanadu	0.8m	3/m	20	5L
Pit. MM	<i>Pittosporum 'Miss Muffet'</i>	Miss Muffet	1m	As shown	57	5L
Ros. HC	<i>Rosmarinus 'Huntingtons Carpet'</i>	Rosemary	g'cover	3/sq.m	71	140mm pot
Wes. Zen	<i>Westringia 'Zena'</i>	Coastal Rosemary	1m	1/sqm	30	5L
Wes. Nar	<i>Westringia 'Naringa'</i>	Coastal Rosemary	2m	1/m	3	5L
<b>LEVEL 5</b>						
Adi. aet	<i>Adiantum aethiopicum</i>	Maidenhair Fern	0.4m	As shown	10	140mm pot
Cra. arb	<i>Crassula arborescens</i>	Crassula	0.8m	As shown	4	5L
Phi. Xan	<i>Philodendron 'Xanadu'</i>	Xanadu	0.8m	As shown	6	5L
Tra. jas	<i>Trachelospermum jasminoides</i>	Star Jasmine	spillover	2/m	5	5L
Vio. hed	<i>Viola odorata</i>	Violet	g'cover	4/sq.m	10	140mm pot
<b>LEVEL 6</b>						
Ela. ebb	<i>Elaeagnus ebbengei</i>	Silverberry	2m	As shown	5	25L
Lom. Tan	<i>Lomandra 'Tanika'</i>	Mat Rush	0.8m	3/sq.m	68	140mm pot
Met. tho	<i>Metrosideros thomasi</i>	NZ Christmas Bush	2m	1/m	19	25L
Pit. MM	<i>Pittosporum 'Miss Muffet'</i>	Miss Muffet	1m	As shown	22	5L
Plu. acu	<i>Plumeria acutifolia</i>	Frangipani	3-4m	As shown	2	200L
Wes. AB	<i>Westringia 'Aussie Box'</i>	Coastal Rosemary	0.7m	2/sqm	26	5L
<b>LEVEL 6: PLANTS IN POTS</b>						
Ag. ame	<i>Agave americana</i>	Century Plant	1.5m		2	25L
Ag. att	<i>Agave attenuata</i>	Agave	0.8m		2	25L
Alc. Rub	<i>Alcantrea 'Rubra'</i>	Bromeliad	0.8m		2	25L
Ros. HC	<i>Rosmarinus 'Huntingtons Carpet'</i>	Prostrate Rosemary	g'cover		10	140mm pot
Sen. ser	<i>Senecio serpens</i>	Chalksticks	g'cover		10	140mm pot

NOTE:  
BCA compliant balustrades to perimeter of all terraces and balconies. Refer to architect's documentation

POTS:  
Same or similar to:  
Quatro Design U-Bowls  
1200 x 900H  
900 x 700H  
700 x 500H  
Refer to plant schedule for indicative planting

NOT ISSUED FOR CONSTRUCTION



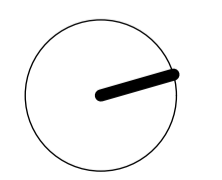
e melissa@melissawilson.com.au  
www.melissawilson.com.au

ISSUE	AMENDMENT	DATE	SCALE: 1:100@A1
A	CO-ORDINATION ISSUE	11.05.21	DRAWN: GM
B	FINAL DA CO-ORDINATION	24.09.21	CLIENT: COLIN AND ANDREA HENRY
C	DA ISSUE	07.10.21	
D	AMENDED DA	29.11.21	

DRAWING TITLE  
LANDSCAPE PLAN: BUILDING A UPPER LEVELS

PROJECT  
342-348 HIGH STREET, PENRITH

DWG NO.  
**LS04**  
ISSUE  
**D**



NOTES  
REFER TO DETAIL SURVEY FOR SITE IDENTIFICATION, BOUNDARY INFORMATION & LEVELS.  
ALL LEVELS AND DIMENSIONS TO BE CONFIRMED ON SITE. IF ANY DISCREPANCIES OCCUR PLEASE NOTIFY THE LANDSCAPE ARCHITECT