

New street tree
(refer to council's specification)

25# Juu

65# Lolk

1# MEL + 47# Pol

7# Pol

Above ground OSD basin 2
(refer to Hydraulic eng's detail)

1# TRL + 11# Caa

STREET

ADELAIDE

DRIVEWAY

LANDSCAPE+PLAY ITEM LAYOUT PLAN:ground floor

scale: 1:100

LEGEND

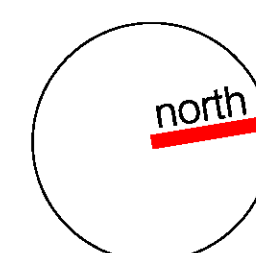
- Proposed street tree planting
(refer to Council's specification)
- Proposed large canopy tree planting
(refer to proposed plant schedule)
- Existing trees to be removed
(refer to Arborist's report)
- Proposed small tree planting
(refer to proposed plant schedule)
- Proposed shrub planting
(refer to proposed plant schedule)
- Proposed groundcover planting
(refer to proposed plant schedule)
- Proposed accent planting
(refer to proposed plant schedule)
- Proposed turf area
(refer to proposed plant schedule)
- Proposed artificial turf
- Proposed stone stepping paver
- Proposed conc. paving
- Proposed sandpit
- Proposed synthetic softfall
on outdoor play area
- Proposed external tile paving
to Architect's details
- Proposed decomposed
granite paving
- Proposed conc. wall edging
- Proposed timber deck
- Proposed sandstone log
edging around sandpit
- Proposed 1.6m, 1.8m, 2.2m & 2.3m
high solid fence to Acoustic eng's detail
- Proposed metal edging
- Proposed feature GRC pot
with seating
- Proposed shade structure
over outdoor play area
- Proposed dry pebble creek bed
with hand water pump
- Proposed above ground OSD basin
& suspended OSD tank to Hydraulic
eng's detail
- Proposed grated drains to
Hydraulic eng's detail
- Design levels
- Existing levels
- Site boundary



membership # 001353
mob: 0401 352 354
email:kobby@canvaslandscape.com.au

187-189 Adelaide Street, ST. MARYS NSW

0 1 2 5 10 scale @1:100A1
@1:200A3



dwg title

landscape plan:
ground fr

scale: 1:200 @a1

dwg no.: DA-L101

Client:
ANRITE MANMARK & CHRISYL
HOLDINGS PTY LTD

revision

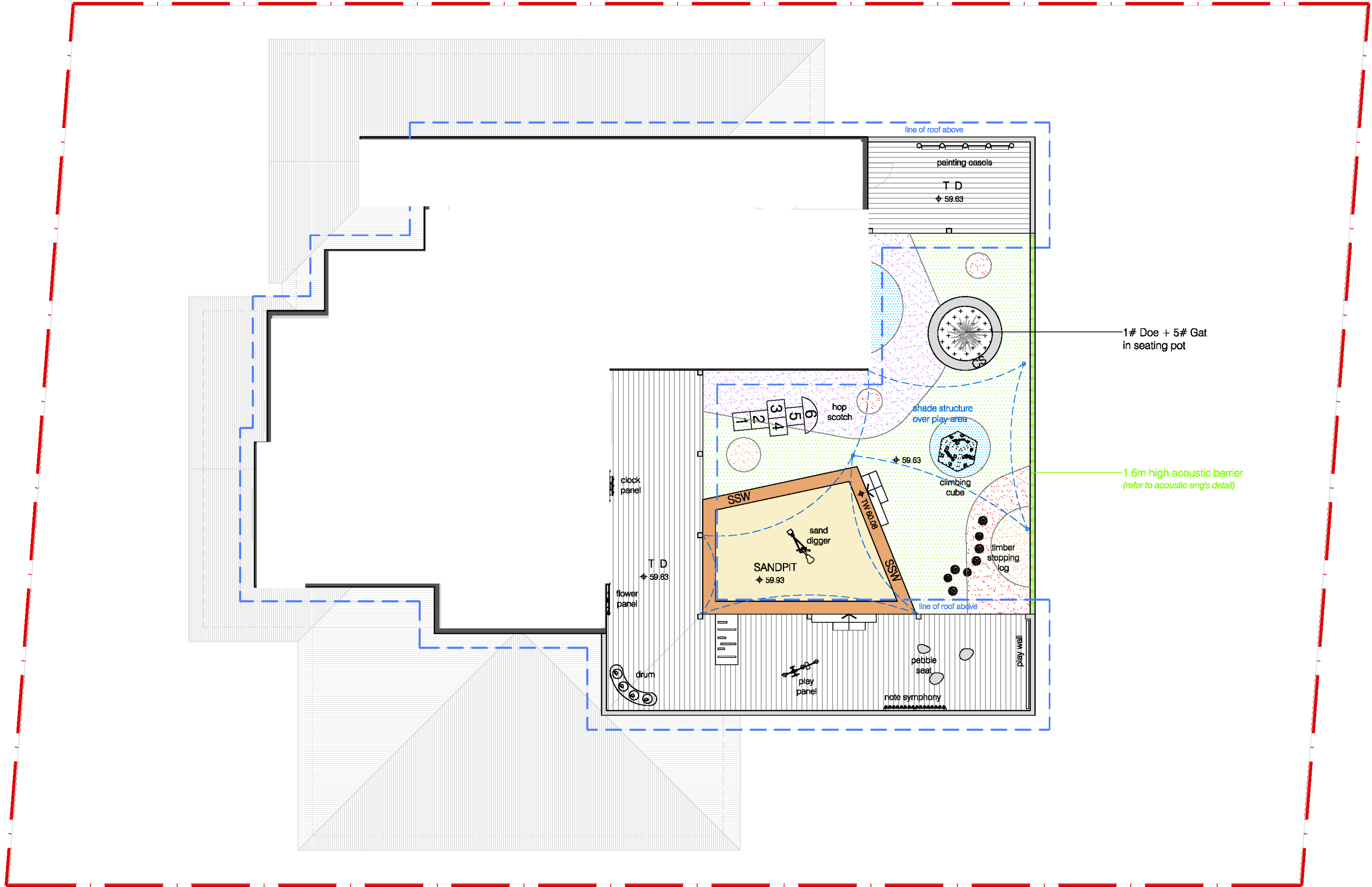
P1 co-ordination
A da submission

date

21/12/21
22/12/21

Do not scale off this drawing. Use figured dimensions only. Resolve discrepancies with The Landscape Architect before proceeding. Copyright of this drawing and designs executed remains vested in CANVAS landscape architects. Copyright remains with the Landscape Architects. Reproduction of this document is not permitted without the approval of the Landscape Architect. Contractors to verify site conditions and dimensions

ADELAIDE STREET



LANDSCAPE+PLAY ITEM LAYOUT PLAN:first floor

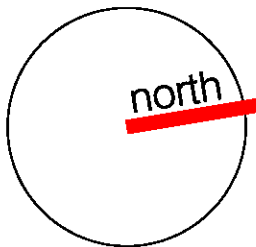
scale: 1:100

- LEGEND
- Proposed street tree planting (refer to Council's specification)
 - Proposed large canopy tree planting (refer to proposed plant schedule)
 - Existing trees to be removed (refer to Arborist's report)
 - Proposed small tree planting (refer to proposed plant schedule)
 - Proposed shrub planting (refer to proposed plant schedule)
 - Proposed groundcover planting (refer to proposed plant schedule)
 - Proposed accent planting (refer to proposed plant schedule)
 - Proposed turf area (refer to proposed plant schedule)
 - Proposed artificial turf
 - Proposed stone stepping paver
 - Proposed conc. paving
 - Proposed sandpit
 - Proposed synthetic softfall on outdoor play area
 - Proposed external tile paving to Architect's details
 - Proposed decomposed granite paving
 - Proposed conc. wall edging
 - Proposed timber deck
 - Proposed sandstone log edging around sandpit
 - Proposed 1.6m, 1.8m, 2.2m & 2.3m high solid fence to Acoustic eng's detail
 - Proposed metal edging
 - Proposed feature GRC pot with seating
 - Proposed shade structure over outdoor play area
 - Proposed dry pebble creek bed with hand water pump
 - Proposed above ground OSD basin & suspended OSD tank to Hydraulic eng's detail
 - Proposed grated drains to Hydraulic eng's detail
 - Design levels
 - Existing levels
 - Site boundary



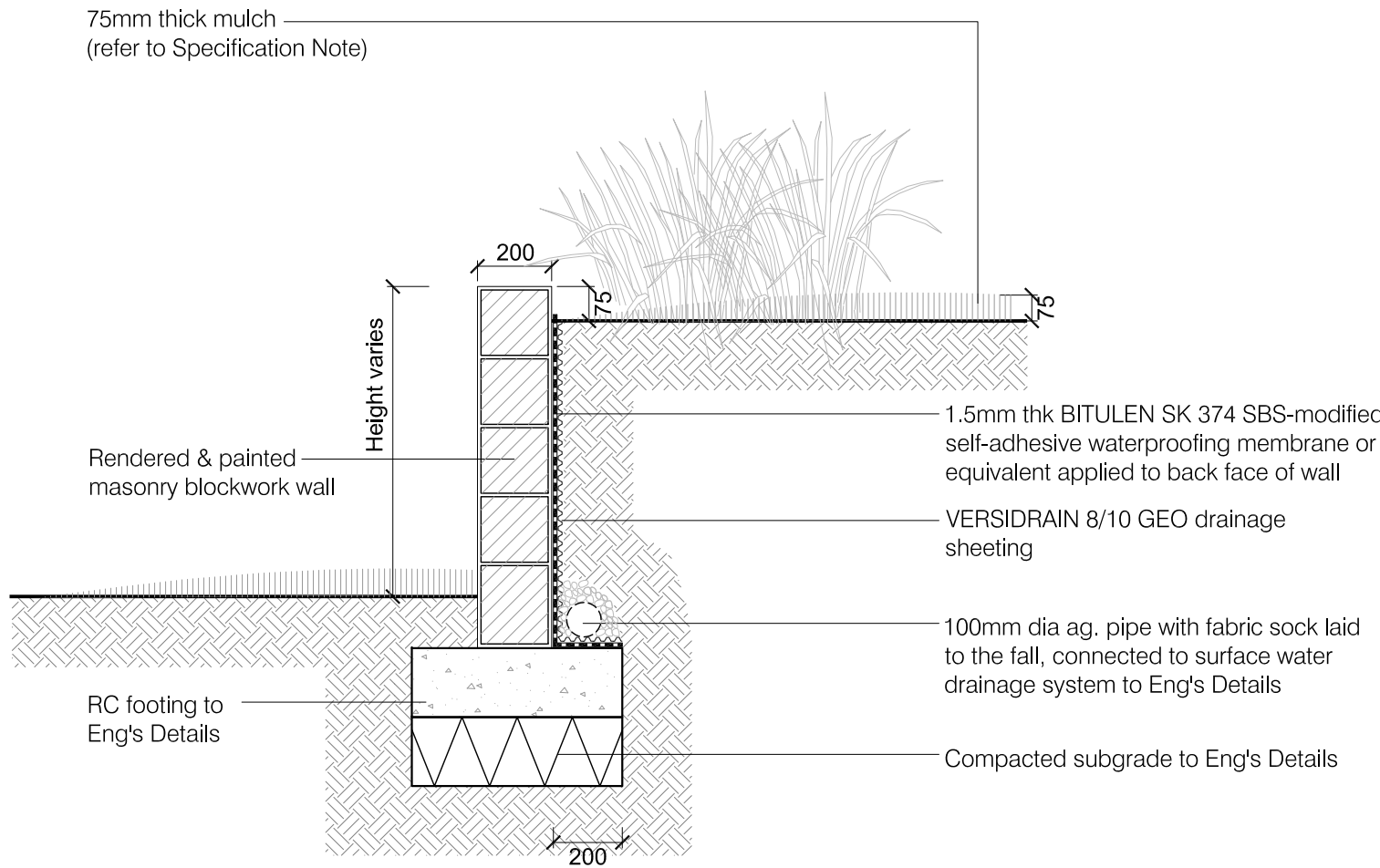
187-189 Adelaide Street, ST. MARYS NSW

0 1 2 5 10 scale @1:100A1
@1:200A3

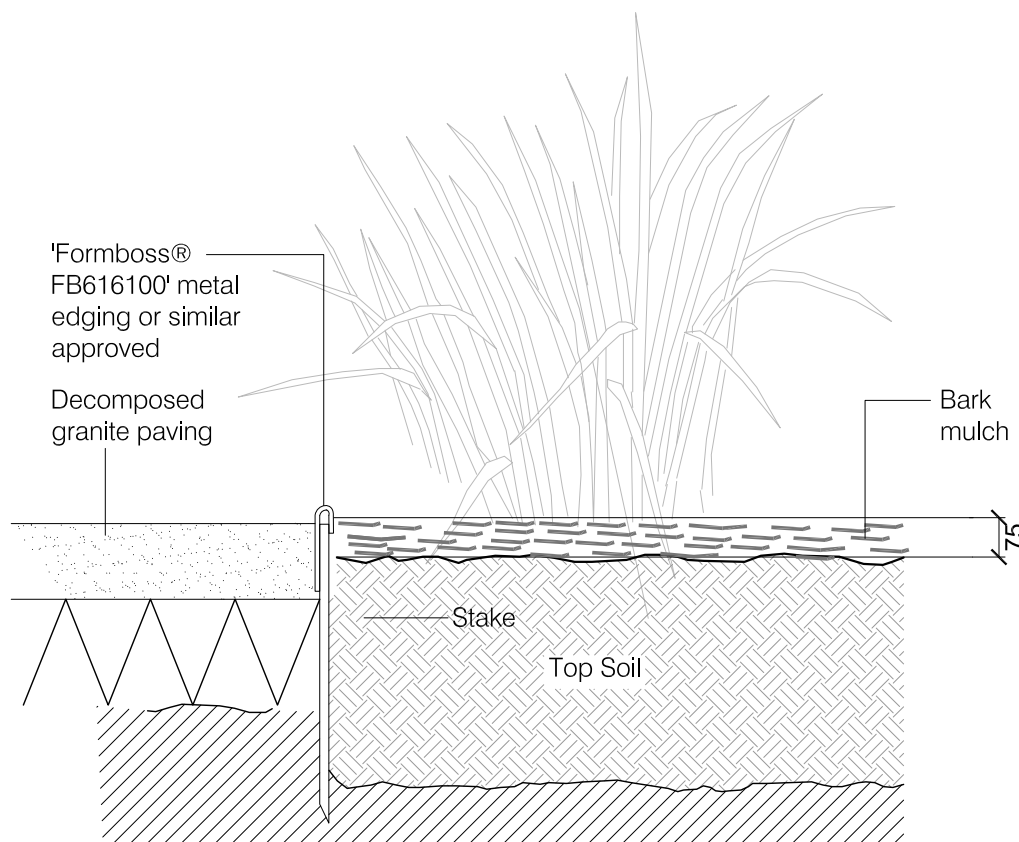


dwg title	scale:	revision	date
landscape plan: first fr	1:100 @a1 dwg no.: DA-L102	P1 co-ordination	21/12/21
	Client: ANRITE MANMARK & CHRISYL HOLDINGS PTY LTD	A da submission	22/12/21

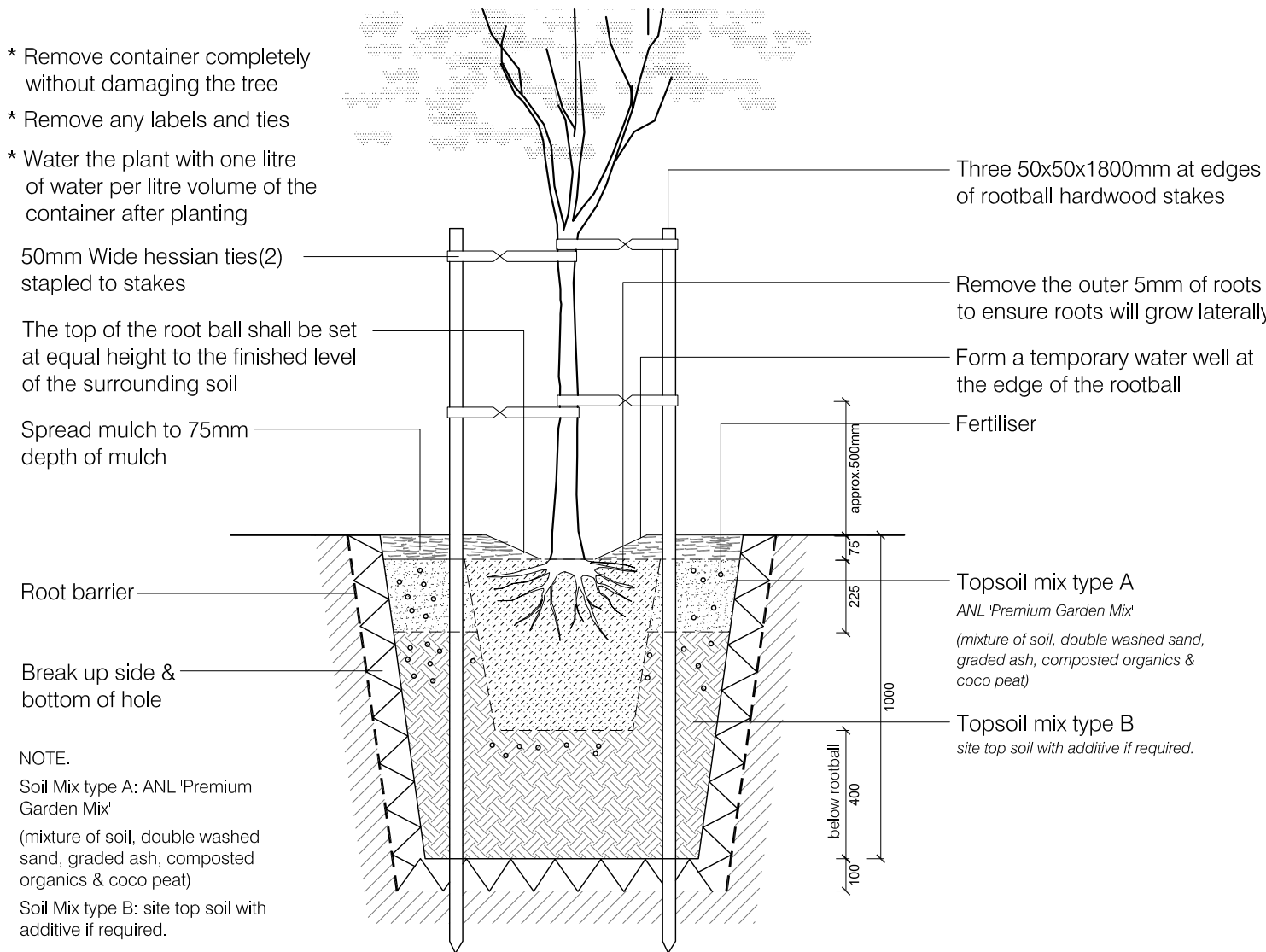
Do not scale off this drawing. Use figured dimensions only. Resolve discrepancies with The Landscape Architect before proceeding. Copyright of this drawing and designs executed remains vested in CANVAS landscape architects. Copyright remains with the Landscape Architects. Reproduction of this document is not permitted without the approval of the Landscape Architect. Contractors to verify site conditions and dimensions



TYPICAL DETAIL 01: retaining wall scale: 1:20



TYPICAL DETAIL 02: metal edging scale: 1:10



TYPICAL DETAIL 03: tree planting scale: 1:20

MAINTENANCE PROGRAM

The typical range of maintenance tasks required over a 12 month period is summarised in the table. Any information provided in the table must be assessed in the light of the weather and general site conditions. For example, watering frequency depends on the soil drainage and rainfall; fertiliser type and frequency needs to be adjusted to suit the plant requirements and the soil fertility and pH.

MULCH
Mulch will need be topped up periodically to maintain a min. depth of 75mm. Mulch should be kept at least 50mm away from plant stems to reduce the risk of collar rot.

WEEDS
Weeds in mulched beds will need to be controlled by hand pulling or by the use of non residual herbicides. When using herbicides be very careful to avoid spray drifting onto valuable plants. the smallest contact with the chemicals can cause damage.

PLANT MAINTENANCE
Deep watering once or twice a week is more beneficial to plants than frequent light watering. Frequent watering will produce shallow roots and make the plant less stable and susceptible to drought. Maintain moisture to the bottom of the rootball for the first 3 months. To help safeguard plants remove labels immediately after planting. Where plants are susceptible to damage by vehicles to pedestrians, maintain protective fences until plants are well established. Replace dead plants fortnightly until such time as alternative maintenance procedures are in places.

PROPOSED PLANT SCHEDULE

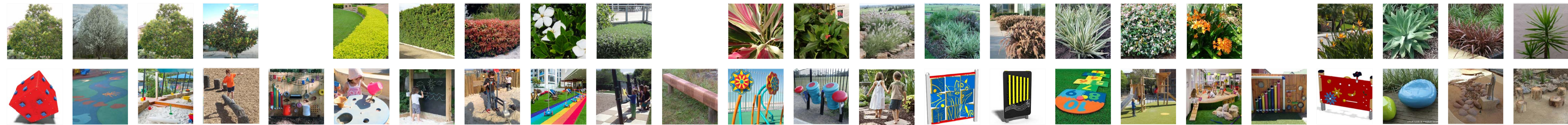
CODE	BOTANICAL NAME	COMMON NAME	POT SIZE	MATURE HEIGHT
TREES				
ACS	<i>Acmena smithii</i>	Lillypilly	45L	8m
ANC	<i>Angophora costata</i>	Smooth-barked Apple	45L	15m
COF	<i>Corymbia ficifolia</i>	Flowering Gum	45L	8m
FRR	<i>Fraxinus Raywood</i>	Claret Ash	45L	10m
MEL	<i>Melaleuca linariifolia</i>	Snow-in-Summer	45L	7m
TRL	<i>Tristanopsis laurina</i>	Water Gum	45L	8m
SHRUBS				
Acs	<i>Acmena smithii var. minor</i>	Dwarf Lillypilly	300mm	3m
Dov	<i>Dodonaea viscosa</i>	Purple-leaved Hop-bush	200mm	1.5m
Dsg	<i>Duranta 'Sheena's Gold'</i>	Golden Dew Drop (Hedge)	300mm	2m
Goo	<i>Goodenia ovata</i>	Hop Goodenia	200mm	2m
ACCENT PLANTS				
Cac	<i>Cordyline australis 'Cabernet'</i>	Cordyline Cabernet	200mm	1.5m
Cpj	<i>Cordyline 'Pink Joy'</i>	Pink Joy Cordyline	150mm	1.2m
Doe	<i>Dorothy's excelsa</i>	Gymea Lily	5L	2m
Phbb	<i>Phormium 'Bronze Baby'</i>	Bronze Baby Flax	200mm	0.8m
Std	<i>Strelitzia reginae dwarf</i>	Dwarf Bird-of-Paradise	200mm	0.6m
TURF GRASS				
As noted	<i>Stenotaphrum secundatum</i>	Sir Walter Buffalo	roll	

CODE	BOTANICAL NAME	COMMON NAME	POT SIZE	MATURE HEIGHT
GROUND COVERS				
Caa	<i>Carex appressa</i>	Tall Sedge	150mm	0.7m
Cao	<i>Calathea ornata</i>	Prayer/Peacock Plant	5L	0.4m
Dib	<i>Diets biocolor</i>	Yello Wild Iris	150mm	1m
Dic	<i>Dianella caerulea 'Little Jess'</i>	Flax Lily	150mm	0.4m
Dir	<i>Dianella revoluta</i>	Black Anther Flax Lily	150mm	0.4m
Dis	<i>Dichondra 'silver falls'</i>	Dichondra	150mm	0.2m
Dss	<i>Dianella Silver Streak</i>	Silver Streak Flax Lily	150mm	0.4m
Gat	<i>Gazania tomentosa</i>	Gazania	140mm	0.15m
Isn	<i>Isoplepis nodosa</i>	Nobby Club-rush	150mm	0.5m
Juu	<i>Juncus ustitatus</i>	Tussock Rush	150mm	1m
Lim	<i>Liriope muscari 'Variegata'</i>	Variegata Lily Turf	150mm	0.3m
Limeg	<i>Liriope muscari 'Evergreen Giant'</i>	Giant Lily Turf	150mm	0.6m
Loik	<i>Lomandra longifolia 'Katrinus'</i>	Spiny-headed Mat-rush 'Katrinus'	150mm	0.7m
Opj	<i>Ophiopogon japonicus 'Black Dragon'</i>	Mondo Grass	100mm	0.3m
Pea	<i>Pennisetum alopecuroides 'cultivar'</i>	Black Lea	150mm	0.8m
Pol	<i>Poa labillardieri</i>	Tussock Grass	150mm	0.8m
Sca	<i>Scaevola 'Purple Fanfare'</i>	Purple Fan Flower	150mm	0.3m
Ses	<i>Sesuvio serpens</i>	Dwarf Blue Chalk Sticks	100mm	0.2m
Suc	<i>Sutera cordata 'bolssal white'</i>	Bacopa	150mm	0.2m
Tjt	<i>Trachelospermum jasminoides 'tricolor'</i>	Tricolor Jasmine	150mm	0.2m

Maintenance Task	Frequency											
	January	February	March	April	May	June	July	August	September	October	November	December
Planting												
Watering		WEEKLY				AS REQUIRED						WEEKLY
Fertilising												
Pruning												
Mulching												
Weed control												
Thinning												
Insect & disease control												

NOTE.
All sand pit areas need to have recessed 'hook+eye' with protective cover at nights and closed period.

PROPOSED PLANTING & SAMPLE PLAY ITEMS IMAGE PALETTE



membership # 001353
mob: 0401 352 354
email:kobby@canvaslandscape.com.au

187-189 Adelaide Street, ST. MARYS NSW

Do not scale off this drawing. Use figured dimensions only. Resolve discrepancies with The Landscape Architect before proceeding. Copyright of this drawing and designs executed remains vested in CANVAS landscape architects. Copyright remains with the Landscape Architects. Reproduction of this document is not permitted without the approval of the Landscape Architect. Contractors to verify site conditions and dimensions

dwg title

landscape typical
details, plant schedule
& maintenance program

scale: 1:20 & 10 @a1

dwg no.: DA-L103

Client:
ANRITE MANMARK & CHRISYL
HOLDINGS PTY LTD

revision

P co-ordination
A da submission

date

21/12/21
22/12/21