

HIGHLAND VIEWS STAGES 7-9 GLENMORE PARK NSW

STREETSCAPE AND RIPARIAN CORRIDOR FOR DEVELOPMENT APPLICATION

[Status] DEVELOPMENT APPLICATION

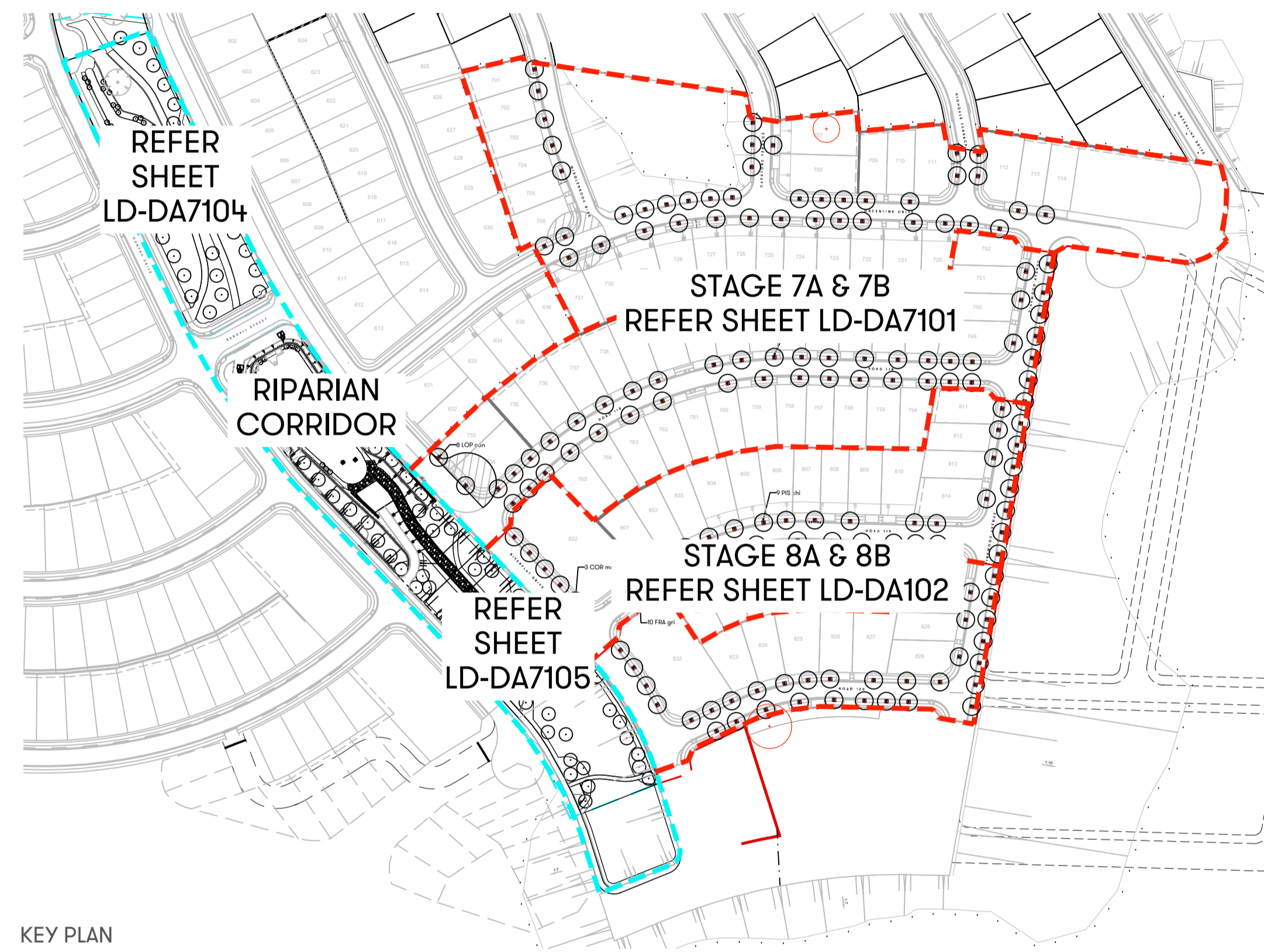
[Nom. Architect] Esther Dickins
RLA | RUD #1053

[File] 20150139-LD-CD7100.DWG

[Print Date] 14 April 2021

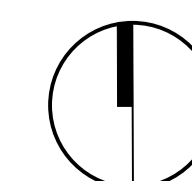
History

[Rev#]	[Description]	[Date]
A	FOR APPROVAL	19/11/2020
B	FOR APPROVAL	08/03/2021
C	FOR APPROVAL	12/03/2021
D	FOR APPROVAL	31/03/2021
E	FOR APPROVAL	14/04/2021



LANDSCAPE DRAWING REGISTER		
SHEET	SHEET NAME	REVISION
LD-DA7000	COVER SHEET	E
LD-DA7001	LANDSCAPE NOTES AND PLANT SCHEDULE	E
LD-DA7100	PUBLIC DOMAIN PLAN - STAGE 7	E
LD-DA7101	PUBLIC DOMAIN PLAN - STAGE 8	E
LD-DA7104	RIPARIAN CORRIDOR PLAN	D
LD-DA7105	RIPARIAN CORRIDOR PLAN	D
LD-DA7106	RIPARIAN CORRIDOR SCHEDULES	D
LD-DA7300	RIPARIAN CORRIDOR LANDSCAPE SECTIONS	D
LD-DA7500	RIPARIAN CORRIDOR TYPICAL DETAILS	D

NOT FOR CONSTRUCTION



History

[Rev#]	[Description]	[Date]
A	FOR APPROVAL	19/11/20
B	FOR APPROVAL	08/03/21
C	FOR APPROVAL	12/03/21
D	FOR APPROVAL	31/03/21
E	FOR APPROVAL	14/04/21

LANDSCAPE NOTES

GENERAL

ALL LANDSCAPE RELATED WORKS ARE TO BE PERFORMED BY A QUALIFIED LANDSCAPE CONTRACTOR AND/OR TRADESPERSON.

SITE ESTABLISHMENT

THE CONTRACTOR SHALL ESTABLISH SITE ACCESS AND COMPOUND IN POSITION AGREED WITH THE SUPERINTENDENT AND OR SUBJECT TO COUNCIL APPROVAL. THE CONTRACTOR SHALL BE TOTALLY RESPONSIBLE FOR PROTECTING THE SITE WORKS DURING CONSTRUCTION AND ESTABLISHMENT INCLUDING VEGETATION, PEDESTRIAN AND VEHICULAR MANAGEMENT. IMPLEMENT EROSION CONTROL AND SITE MANAGEMENT PRACTICES TO SECURE THE SITE AND TO COMPLY WITH ALL STATUTORY REQUIREMENTS.

EARTHWORKS & DRAINAGE

EARTHWORKS

THE LANDSCAPE CONTRACTOR SHALL ALLOW FOR MINOR EARTH TRIMMING AND PROFILING TO PREPARE LANDSCAPE AREAS TO ACCEPT THE NOMINATED TREATMENT. PROTECT EXPOSED EARTHWORKS WITH TEMPORARY EROSION MEASURES AND COORDINATE THE ON-SITE DISPOSAL OF EXCESS SPOIL WITH THE SUPERINTENDENT.

DRAINAGE

ALL LANDSCAPE AREAS SHALL BE FREE DRAINING WITH POSITIVE DRAINAGE TO STORMWATER OUTLETS OR NATURAL DRAINAGE SYSTEMS.

SOFT LANDSCAPE WORKS

SOILS

SOIL MIX AS PER PENRITH CITY COUNCIL'S SOIL MIX SPECIFICATION.

- SOIL TYPE A: BENEDICT'S SAND & GRAVEL PREMIUM ORGANIC GARDEN MIX - BS133 OR EQUIVALENT & TESTED TO AS 4419.
- SOIL TYPE B: 50% (MAX.) EXCAVATED SITE SOIL & 50% FINE WASHED SAND WITH LESS THAN 1% ORGANIC MATTER BY WEIGHT AND TESTED TO AS 4419. IF INSUFFICIENT QUANTITIES OF EXCAVATED SITE SOIL ARE AVAILABLE, FINE WASHED SAND EQUIVALENT TO BENEDICT'S FINE WASHED SAND MAY BE USED IN ITS PLACE.

ALL PLANTER AREAS SHALL HAVE A MINIMUM SOIL DEPTH OF 300MM AND 150MM TO TURF | GRASS AREAS WITH LANDSCAPE QUALITY SOIL THAT CONFORMS TO AS 4419 SOILS FOR LANDSCAPE AND GARDENS AND AS 445A COMPOST

ALL NEW PLANTINGS TO BE INSTALLED WITH TERRACOTTEM SOIL CONDITIONER (AS PER MANUFACTURER'S SPECIFICATION). SOIL CONDITIONER AND MULCH MUST BE FREE OF DELETERIOUS AND EXTRANEIOUS MATTER SUCH AS SOIL, WEEDS, STICKS AND STONES. RECYCLED MULCH SHALL BE WEATHERED FOR A MINIMUM OF 12 WEEKS PRIOR TO DELIVERY AND SPREADING ONSITE AND CONTAIN NO LIVE FUNGAL PROPERTIES.

NEW TURF

ALL NEW TURF TO FINISH FLUSH WITH ADJACENT SURFACES. CULTIVATE TO A DEPTH OF 150MM. TURF TOPSOIL TO INCLUDE SOIL CONDITIONER AS SPECIFIED.

NEW PLANTING

REFER TO THE PLANT SCHEDULE. THE CONTRACTOR SHALL ENSURE THAT ALL PLANT MATERIALS ARE SECURED IMMEDIATELY UPON AWARD OF CONTRACT. FAILURE TO DO SO WILL NOT GIVE RISE TO SUBSTITUTIONS OR EXTENSIONS OF TIME. ALL STOCK SHALL BE GROWN IN OPEN AREAS WHICH ARE EXPOSED TO THE SUN AND WIND TO PROMOTE VIGOROUS PLANT GROWTH AND TO HARDEN PLANTS OFF. ALL PLANT MATERIAL SHALL BE PEST AND DISEASE FREE. ALL PLANT MATERIAL SHALL NOT BE ROOT BOUND OR DAMAGED. PLANT DENSITIES SHALL REFLECT ACCEPTED INDUSTRY STANDARDS AND COUNCILS GUIDELINES FOR LANDSCAPE WORKS AND BE SOURCED FROM AN ACCREDITED NURSERY.

ADVANCED TREES

PLANT STOCK SHALL HAVE A WELL DEVELOPED, CLEAR STRAIGHT STEM WITH TRI-BRANCHING STRUCTURE AND HEALTHY CANOPY TYPICAL TO THE SPECIES AND TO THE MINIMUM SIZES SCHEDULED.

ALL STREET TREES TO BE PLANTED IN ACCORDANCE WITH FIGURE 3 TYPICAL TREE PLANTING DETAIL - TREE IN TURF (WITH TIMBER EDGE) DETAILED WITHIN PENRITH CITY COUNCIL'S STREET AND PARK TREE MANAGEMENT PLAN APPENDIX.

TIMBER EDGE

TIMBER EDGES TO ALL NEW STREET TREE PLANTINGS. 90 X 15MM CCA TREATED PINE EDGE WITH 50 X 50 X 450 TIMBER PEGS TO CORNERS, SET 25MM BELOW TOP OF EDGE. TIMBER PEGS FIXED TO EDGING WITH GALVANISED NAILS. NO. 2 PER FIXING, SKEWED

EXCAVATE HOLE MINIMUM 500MM WIDER THAN THE ROOT BALL AND DEEP ENOUGH TO ACCEPT A MINIMUM 200MM OF TOPSOIL BELOW. BREAK UP THE BASE OF THE HOLE TO A FURTHER DEPTH OF 200MM AND LOOSEN COMPACTED SIDES OF THE HOLE AS NECESSARY TO PREVENT CONFINEMENT OF ROOT GROWTH TO THE HOLE. LOOSEN SIDES OF ROOT BALL TO PROMOTE GROWTH. BACKFILL WITH NOMINATED SOIL MIX. LIGHTLY TAMP AND WATER TO ELIMINATE AIR POCKETS. ENSURE POSITIVE DRAINAGE TO ALL TREE POSITIONS.

STAKES AND TIES

PROVIDE HARDWOOD STAKES THAT ARE STRAIGHT, FREE FROM KNOTS OR TWISTS, POINTED AT ONE END. DRIVE STAKES INTO THE GROUND AT LEAST ONE THIRD OF THEIR LENGTH, AVOIDING DAMAGE TO THE ROOT SYSTEM.

STAKE SIZES FOR ADVANCED TREES TO BE A MINIMUM 2 NO. X 50 X 50 X 1800MM HARDWOOD STAKES PER TREE IN PARALLEL FORMAT OR TRI-STAKING AS REQUIRED TO SUPPORT THE TREE. STAKING IS TO REFLECT PREVAILING SEASONAL WIND DIRECTIONS.

STABILISE NEW TREES WITH 50MM HESSIAN WEBBING INSTALLED AS PER COUNCIL'S DETAIL.

MULCH

SUPPLY AND PLACE SPECIFIED MULCH TO PLANTER AREAS AND TREE POSITIONS TO A MINIMUM DEPTH OF 75MM AND AS PER PENRITH CITY COUNCIL'S DETAIL.

REFERENCE DOCUMENTS

AUSTRALIAN STANDARDS

- AS 2303: 2018 TREE STOCK FOR LANDSCAPE USE
- AS 4454: 2012 COMPOSTS, SOIL CONDITIONERS AND MULCHES
- AS 4419: 2018 SOILS FOR LANDSCAPING AND GARDEN USE

TREE ESTABLISHMENT

TREE ESTABLISHMENT MAINTENANCE REGIME PERIOD TO FOLLOW DETAILS OUTLINED IN PENRITH CITY COUNCIL'S STREET AND PARK TREE MANAGEMENT REPORT: SECTION 8 TREE ESTABLISHMENT.

SHORT-TERM WATERING PROGRAM

ALL NEW PLANTING SHOULD BE MANUALLY WATERED ON INSTALLATION, SOAKING TO A DEPTH OF 150MM DAILY FOR THE FIRST 2 WEEKS AND THEN WEEKLY FOR THE FOLLOWING 4 WEEKS. CONTRACTOR TO PROVIDE A WATERING / MAINTENANCE REPORT/ SCHEDULE PRIOR TO PRACTICAL COMPLETION OF PLANTING WORKS AND APPROVAL.

WATER QUALITY

PH BETWEEN 5.5 AND 7.5. TOTAL SOLUBLE SALTS LESS THAN 1000 MG/LITRE. NO SUBSTANCES THAT WOULD BE TOXIC TO PLANT GROWTH.

WATER RESTRICTIONS

COORDINATE THE WATER SUPPLY AND CONFIRM THE WATERING REGIME AGAINST STATE AND TERRITORY LEGISLATION AND RESTRICTIONS AT THE TIME.

PLANT SCHEDULE

REFER DA7100-101 FOR ALL PROPOSED STREET TREE PLANTING LOCATIONS

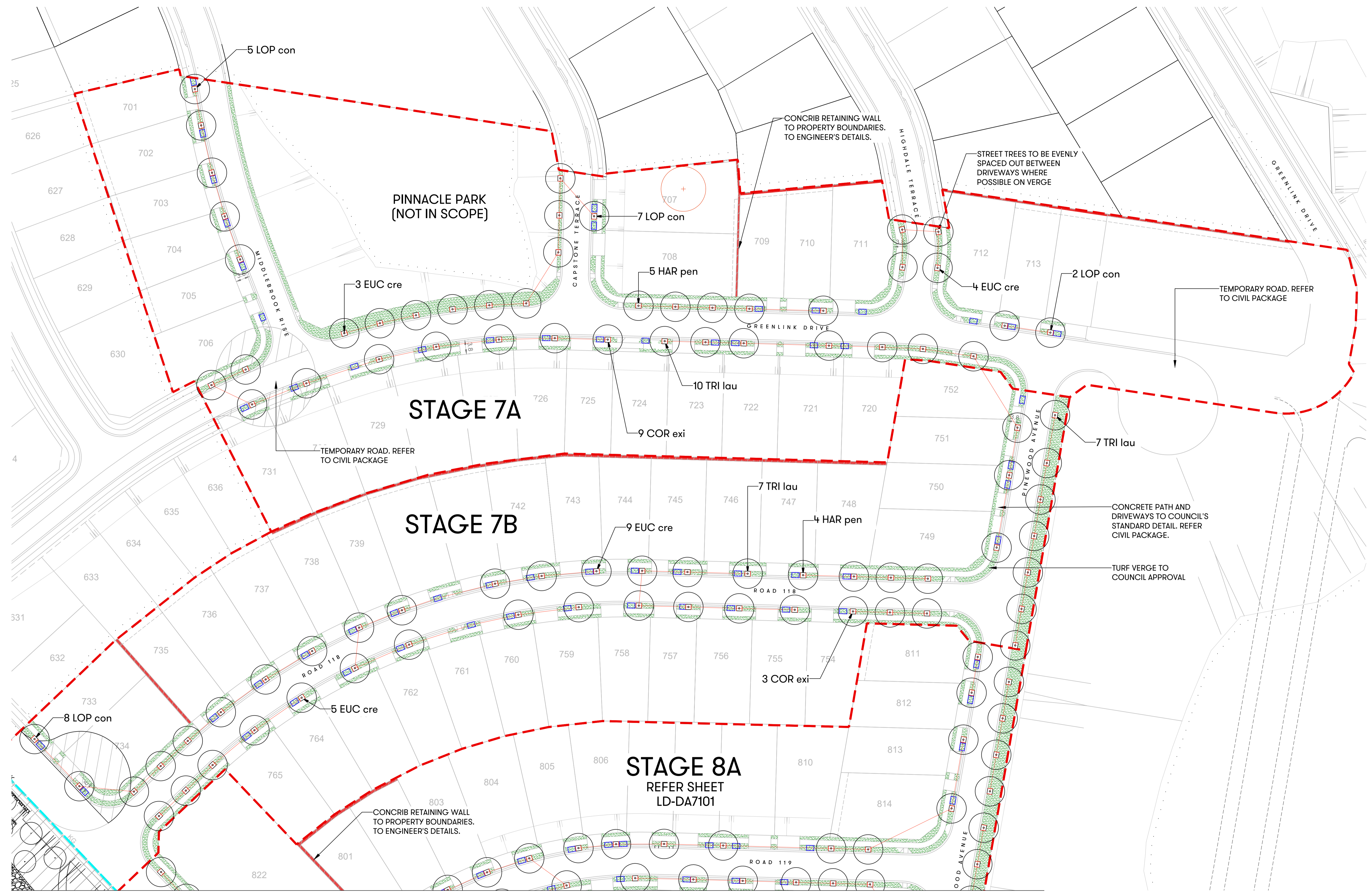
PLANTING SCHEDULE							
CODE	BOTANICAL NAME	COMMON NAME	INSTALLATION SIZE	INSTALLATION HEIGHT	PLANTING RATE	QUANTITY	MATURE HEIGHT
COR exi	Corymbia eximia	Yellow Bloodwood	200L	4.0m	As Shown	14	12m
CUP ana	Cupaniopsis anacardioides	Tuckeroo	200L	4.0m	As Shown	14	15m
EUC cre	Eucalyptus crebra	Narrow-leaved Ironbark	200L	4.0m	As Shown	26	25m
FRA gri	Fraxinus griffithii	Evergreen Ash	200L	4.0m	As Shown	10	10m
HAR pen	Harpullia pendula	Tulipwood	200L	4.0m	As Shown	12	9m
LOP con	Lophostmon confertus	Brush Box	200L	4.0m	As Shown	32	20m
PIS chi	Pistacia chinensis	Chinese Pistache	200L	4.0m	As Shown	8	12m
TRI lau	Tristaniopsis laurina	Watergum	200L	4.0m	As Shown	32	10m

NOT FOR CONSTRUCTION

History		
[Rev#]	[Description]	[Date]
A	FOR APPROVAL	19/11/20
B	FOR APPROVAL	08/03/21
C	FOR APPROVAL	12/03/21
D	FOR APPROVAL	31/03/21
E	FOR APPROVAL	14/04/21

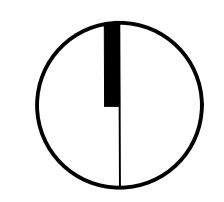
- LEGEND**
- RIPARIAN CORRIDOR BOUNDARY
 - - - STAGING BOUNDARY
 - PROPOSED STREET TREES WITH TIMBER EDGE - REFER PLANT SCHEDULE DA7001
 - + TREES TO BE REMOVED
 - NEW TURF
 - BIN ALLOCATION

- GENERAL NOTES:**
1. DO NOT SCALE FROM DRAWINGS. WRITTEN DIMENSIONS GOVERN. IF IN DOUBT OBTAIN WRITTEN ADVICE FROM SCOTT CARVER OR WHERE APPLICABLE VIA THE PRINCIPAL'S REPRESENTATIVE.
 2. ALL DIMENSIONS ARE IN MILLIMETRES UNLESS OTHERWISE STATED. ALL DIMENSIONS ARE MINIMUM SETTING OUT REQUIREMENTS.
 3. THIS DRAWING IS AN UNCONTROLLED COPY UNLESS STAMPED WITH STATUS VIA THE PRINCIPAL'S REPRESENTATIVE.
 4. THE CONTRACTOR MUST VERIFY ALL DIMENSIONS AND LEVELS ON SITE AS THIS IS NOT A SHOP DRAWING.
 5. THIS DRAWING MUST BE READ IN CONJUNCTION WITH THE TOTAL CONTRACT PACKAGE INCLUDING DRAWINGS AND SPECIFICATIONS OF ALL CONSULTANTS.
 6. THIS DRAWINGS ARE BASED ON SURVEY INFORMATION. SCOTT CARVER DO NOT WARRANT THE ACCURACY OF SURVEY INFORMATION.



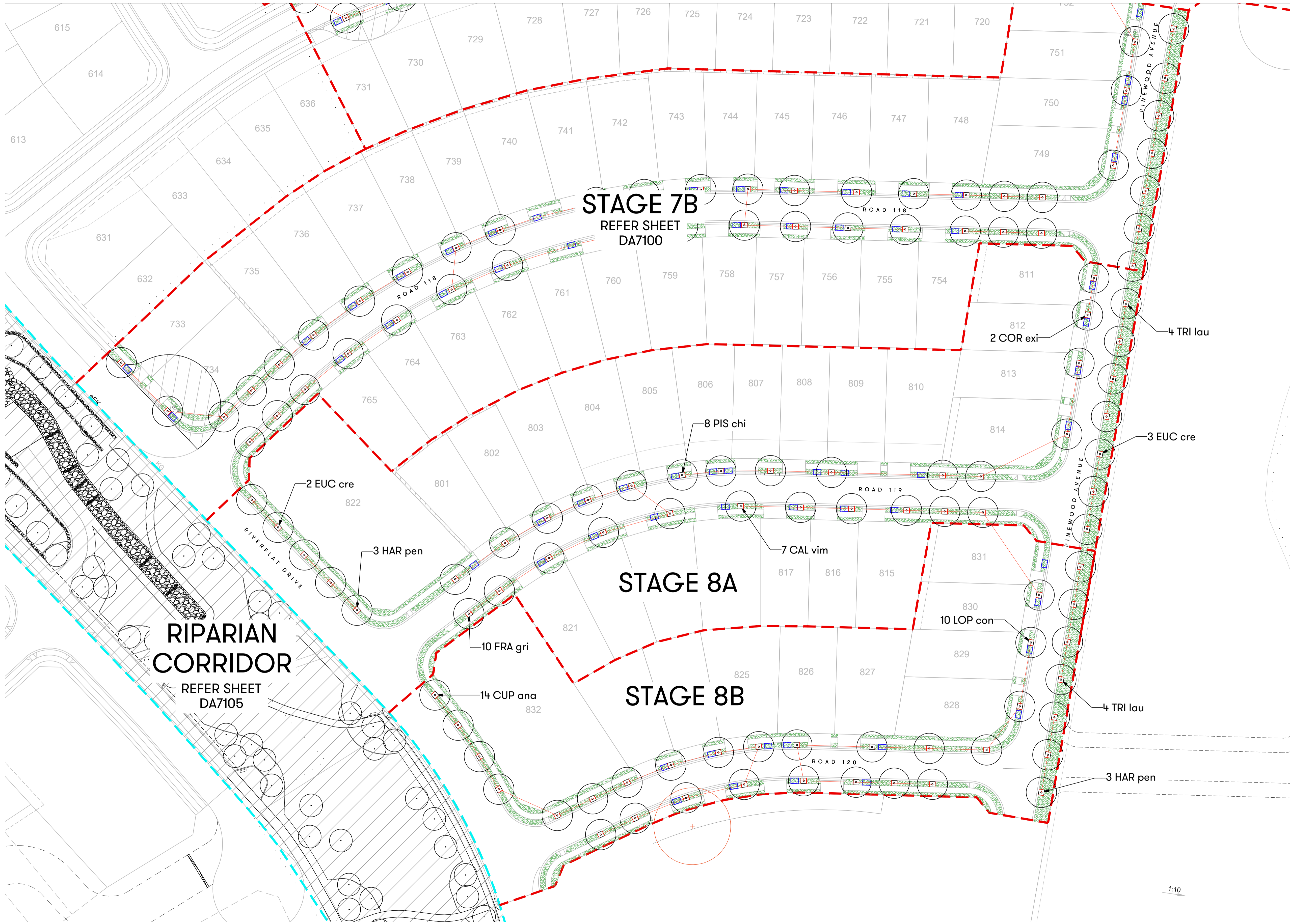
REFER LD-DA7101

NOT FOR CONSTRUCTION



History

[Rev#]	[Description]	[Date]
A	FOR APPROVAL	19/11/20
B	FOR APPROVAL	08/03/21
C	FOR APPROVAL	12/03/21
D	FOR APPROVAL	31/03/21
E	FOR APPROVAL	14/04/21



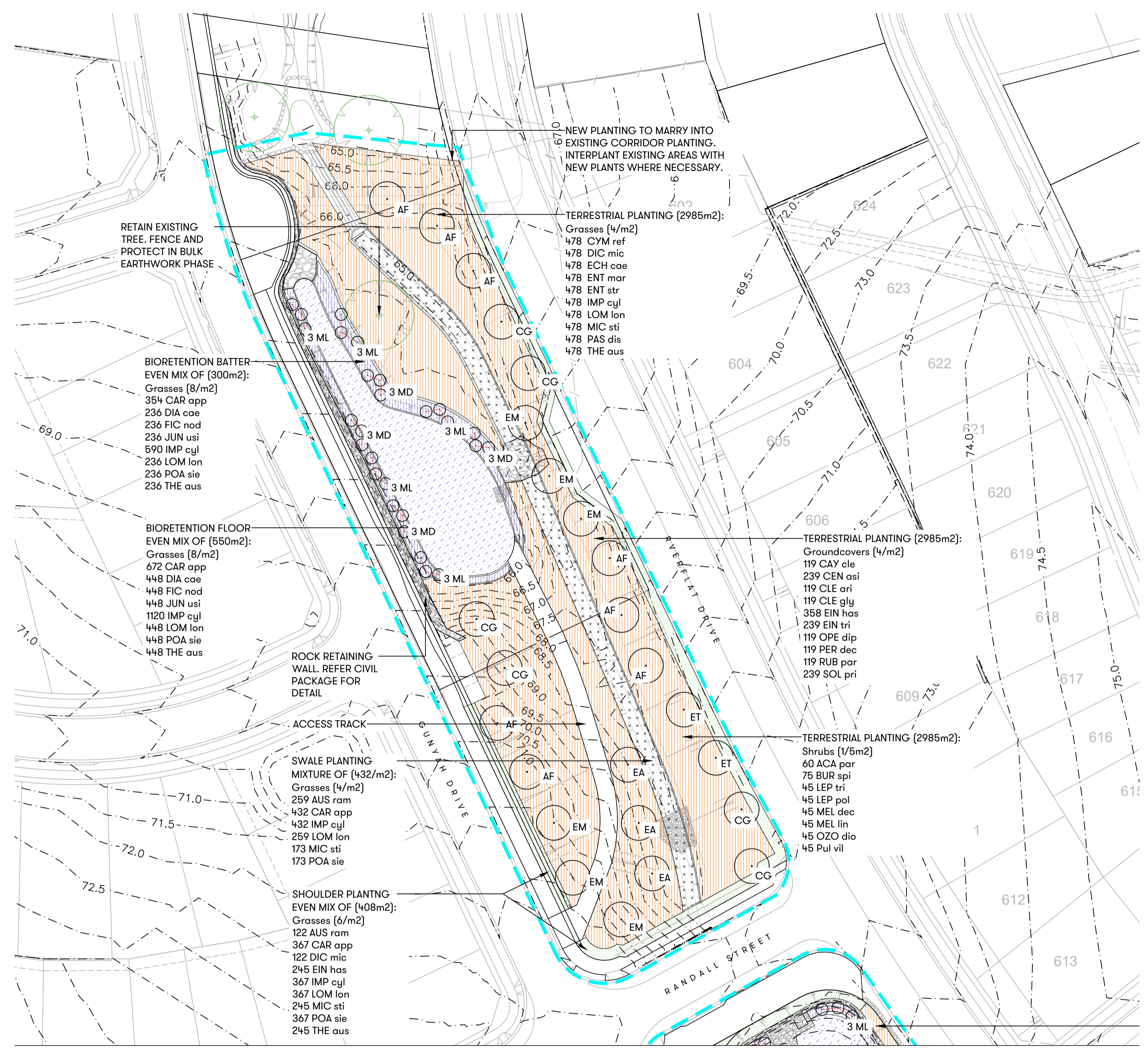
LEGEND

- RIPARIAN CORRIDOR BOUNDARY
- - - STAGING BOUNDARY
- PROPOSED STREET TREES WITH TIMBER EDGE - REFER PLANT SCHEDULE DA7001
- + TREES TO BE REMOVED
- NEW TURF
- BIN ALLOCATION

- GENERAL NOTES:
- DO NOT SCALE FROM DRAWINGS. WRITTEN DIMENSIONS GOVERN. IF IN DOUBT OBTAIN WRITTEN ADVICE FROM SCOTT CARVER OR WHERE APPLICABLE VIA THE PRINCIPAL'S REPRESENTATIVE.
 - ALL DIMENSIONS ARE IN MILLIMETRES UNLESS OTHERWISE STATED. ALL DIMENSIONS ARE MINIMUM SETTING OUT REQUIREMENTS.
 - THIS DRAWING IS AN UNCONTROLLED COPY UNLESS STAMPED WITH STATUS.
 - THE CONTRACTOR MUST VERIFY ALL DIMENSIONS AND LEVELS ON SITE AS THIS IS NOT A SHOP DRAWING.
 - THIS DRAWING MUST BE READ IN CONJUNCTION WITH THE TOTAL CONTRACT PACKAGE INCLUDING DRAWINGS AND SPECIFICATIONS OF ALL CONSULTANTS.
 - THIS DRAWINGS ARE BASED ON SURVEY INFORMATION. SCOTT CARVER DO NOT WARRANT THE ACCURACY OF SURVEY INFORMATION.

NOT FOR CONSTRUCTION

History		
[Rev#]	[Description]	[Date]
A	FOR APPROVAL	08/03/2021
B	FOR APPROVAL	12/03/2021
C	FOR APPROVAL	31/03/2021
D	FOR APPROVAL	14/04/2021



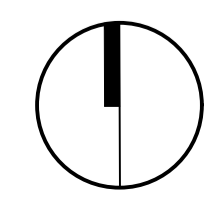
LEGEND

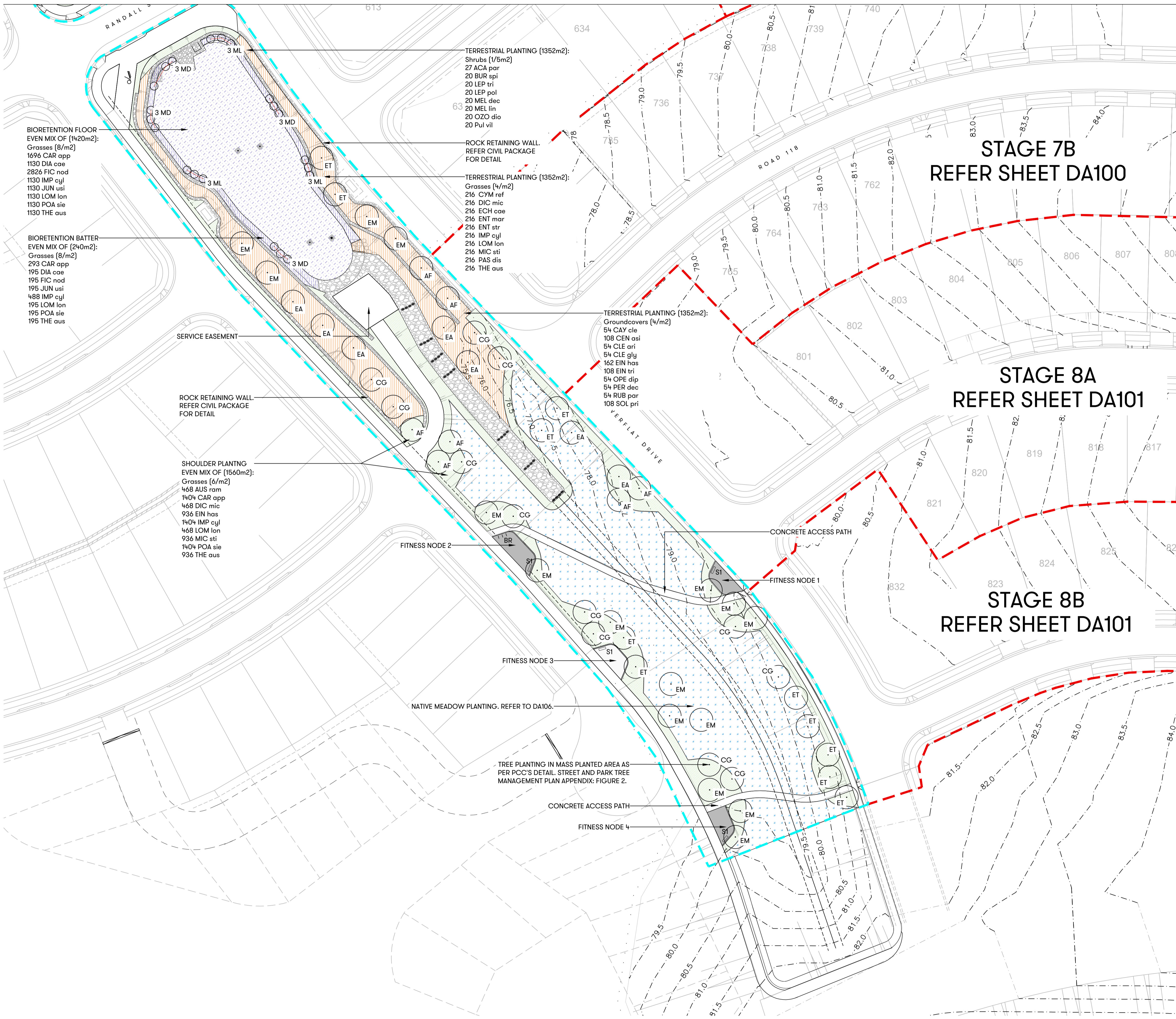
- RIPARIAN CORRIDOR BOUNDARY
- STAGING BOUNDARY
- DESIGN CONTOURS. REFER TO CIVIL PACKAGE.
- PROPOSED TREES
- ⊕ RETAINED TREES
- ▨ ROCK RETAINING WALL. REFER TO CIVIL PACKAGE.
- ▨ BIORETENTION FLOOR
- ▨ BIORETENTION BATTER
- ▨ SHOULDER PLANTING
- ▨ TERRESTRIAL PLANTING
- ▨ NATIVE MEADOW PLANTING
- ▨ SWALE PLANTING
- FITNESS NODES (SOFTFALL)
- S1 SEAT
- BR BIKE RACK

- GENERAL NOTES:
- DO NOT SCALE FROM DRAWINGS. WRITTEN DIMENSIONS GOVERN. IF IN DOUBT OBTAIN WRITTEN ADVICE FROM SCOTT CARVER OR WHERE APPLICABLE VIA THE PRINCIPAL'S REPRESENTATIVE.
 - ALL DIMENSIONS ARE IN MILLIMETRES UNLESS OTHERWISE STATED. ALL DIMENSIONS ARE MINIMUM SETTING OUT REQUIREMENTS.
 - THIS DRAWING IS AN UNCONTROLLED COPY UNLESS STAMPED WITH STATUS.
 - THE CONTRACTOR MUST VERIFY ALL DIMENSIONS AND LEVELS ON SITE AS THIS IS NOT A SHOP DRAWING.
 - THIS DRAWING MUST BE READ IN CONJUNCTION WITH THE TOTAL CONTRACT PACKAGE INCLUDING DRAWINGS AND SPECIFICATIONS OF ALL CONSULTANTS.
 - THIS DRAWINGS ARE BASED ON SURVEY INFORMATION. SCOTT CARVER DO NOT WARRANT THE ACCURACY OF SURVEY INFORMATION.

REFER LD-DA7105

NOT FOR CONSTRUCTION



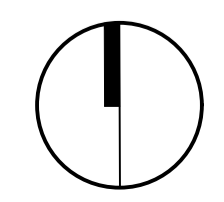


History		
[Rev#]	[Description]	[Date]
A	FOR APPROVAL	08/03/2021
B	FOR APPROVAL	12/03/2021
C	FOR APPROVAL	31/03/2021
D	FOR APPROVAL	14/04/2021

- LEGEND**
- RIPARIAN CORRIDOR BOUNDARY
 - - - STAGING BOUNDARY
 - - - DESIGN CONTOURS. REFER TO CIVIL PACKAGE.
 - PROPOSED TREES
 - ⊕ RETAINED TREES
 - ROCK RETAINING WALL. REFER TO CIVIL PACKAGE.
 - BIORETENTION FLOOR
 - BIORETENTION BATTER
 - SHOULDER PLANTING
 - TERRESTRIAL PLANTING
 - NATIVE MEADOW PLANTING
 - SWALE PLANTING
 - FITNESS NODES (SOFTFALL)
 - S1 SEAT
 - BR BIKE RACK

- GENERAL NOTES:**
- DO NOT SCALE FROM DRAWINGS. WRITTEN DIMENSIONS GOVERN. IF IN DOUBT OBTAIN WRITTEN ADVICE FROM SCOTT CARVER OR WHERE APPLICABLE VIA THE PRINCIPAL'S REPRESENTATIVE.
 - ALL DIMENSIONS ARE IN MILLIMETRES UNLESS OTHERWISE STATED. ALL DIMENSIONS ARE MINIMUM SETTING OUT REQUIREMENTS.
 - THIS DRAWING IS AN UNCONTROLLED COPY UNLESS STAMPED WITH STATUS
 - THE CONTRACTOR MUST VERIFY ALL DIMENSIONS AND LEVELS ON SITE AS THIS IS NOT A SHOP DRAWING
 - THIS DRAWING MUST BE READ IN CONJUNCTION WITH THE TOTAL CONTRACT PACKAGE INCLUDING DRAWINGS AND SPECIFICATIONS OF ALL CONSULTANTS
 - THIS DRAWINGS ARE BASED ON SURVEY INFORMATION. SCOTT CARVER DO NOT WARRANT THE ACCURACY OF SURVEY INFORMATION

NOT FOR CONSTRUCTION



BIORETENTION BASIN PLANTING SCHEDULE (DOWNSTREAM & UPSTREAM)						
Code	Botanical Name	Common Name	Pot Size	Density plants/m ²	% Proportion	Quantity
CAR app	Carex appressa	Tall Sedge	Tubestock	8	15%	3015
DIA cae	Dianella caerulea	Blue Flax-lily	Tubestock	8	10%	2009
FIC nod	Ficinia nodosa	Knobby Club-rush	Tubestock	8	10%	2009
JUN usi	Juncus usitatus	Common Rush	Tubestock	8	10%	2009
IMP cyl	Imperata cylindrica	Blady Grass	Tubestock	8	25%	5024
LOM lon	Lomandra longifolia	Spiny-headed Mat-rush	Tubestock	8	10%	2009
POA sie	Poa sieberiana	Grey Tussock-grass	Tubestock	8	10%	2009
MEL dec	Melaleuca decora	White Feather Honeymyrtle	200mm	As Shown		27
MEL lin	Melaleuca linariifolia	Flax-leaved Paperbark	200mm	As Shown		24
THE tri	Themeda triandra	Kangaroo Grass	Tubestock	8	10%	2009
TOTAL					100%	20144

SWALE PLANTING SCHEDULE (DOWNSTREAM)						
Code	Botanical Name	Common Name	Type	Density plants/m ²	% Proportion	Quantity
AUS ram	Austrostipa ramosissima	Stout Bamboo Grass	Tubestock	4	15%	259
CAR app	Carex appressa	Tall Sedge	Tubestock	4	25%	432
IMP cyl	Imperata cylindrica	Blady Grass	Tubestock	4	25%	432
LOM lon	Lomandra longifolia	Spiny-headed Mat-rush	Tubestock	4	15%	259
MIC sti	Microlaena stipoides	Weeping Grass	Tubestock	4	10%	173
POA sie	Poa sieberiana	Grey Tussock-grass	Tubestock	4	10%	173
TOTAL					100%	1728

SHOULDER PLANTING SCHEDULE (DOWNSTREAM & UPSTREAM)						
	Species Name	Common Name	Type	Density plants/m ²	% Proportion	Quantity
AUS ram	Austrostipa ramosissima*	Stout Bamboo Grass	Tubestock	6	5%	590
CAR app	Carex appressa	Tall Sedge	Tubestock	6	15%	1771
DIC mic	Dichelachne micrantha	Shorthair Plumegrass	Tubestock	6	5%	590
EIN has	Einadia hastata	Berry Saltbush	Tubestock	6	10%	1181
IMP cyl	Imperata cylindrica	Blady Grass	Tubestock	6	15%	1771
LOM lon	Lomandra longifolia *	Spiny-headed Mat-rush	Tubestock	6	15%	1771
MIC sti	Microlaena stipoides	Weeping Grass	Tubestock	6	10%	1181
POA sie	Poa sieberiana	Grey Tussock-grass	Tubestock	6	15%	1771
THE tri	Themeda triandra	Kangaroo Grass	Tubestock	6	10%	1181
TOTAL					100%	11807
* Plant at back of strip away from footpath						

TERRESTRIAL PLANTING SCHEDULE (DOWNSTREAM & UPSTREAM)						
Code	Botanical Name	Common Name	Pot Size	Density /m ²	% Proportion	Quantity
Small Tree / Shrub Species (0.5 - 6m)						
AP	Acacia parramattensis	Parramatta Wattle	200mm	0.5	4%	87
BS	Bursaria spinosa	Blackthorn	200mm	0.5	5%	109
LT	Leptospermum trinervium	Flaky-barked Tea-tree	200mm	0.5	3%	65
LP	Leptospermum polygalifolium	Tantoon	200mm	0.5	3%	65
MD	Melaleuca decora	White Feather Honeymyrtle	200mm	0.5	3%	65
ML	Melaleuca linariifolia	Flax-leaved Paperbark	200mm	0.5	3%	65
MS	Melaleuca styphelioides	Prickly-leaved Tea Tree	200mm	0.5	3%	65
OD	Ozothamnus diosmifolius	Sago Bush	200mm	0.5	3%	65
PV	Pultenaea villosa	Hairy Bush-pea	200mm	0.5	3%	65
Sedges, Rushes, Reeds and Grasses						
CYM ref	Cymbopogon refractus	Barbed Wire Grass	Tubestock	4	4%	694
DIC mic	Dichelachne micrantha	Shorthair Plumegrass	Tubestock	4	4%	694
ECH cae	Echinopogon caespitosus	Bushy Hedgehog-grass	Tubestock	4	4%	694
ENT mae	Entolasia marginata	Bordered Panic	Tubestock	4	4%	694
ENT str	Entolasia stricta	Wirry Panic	Tubestock	4	4%	694
IMP cyl	Imperata cylindrica	Blady Grass	Tubestock	4	4%	694
LOM lon	Lomandra longifolia	Spiny-headed Mat-rush	Tubestock	4	4%	694
MIC sti	Microlaena stipoides	Weeping Grass	Tubestock	4	4%	694
PAS dis	Paspalidium distans	Watercrown Grass	Tubestock	4	4%	694
THE tri	Themeda triandra	Kangaroo Grass	Tubestock	4	4%	694
Ground Layer Species (0 - 1.5m) Vines and Scramblers						
CAY cle	Cayratia clematidea	Native Grape	Tubestock	4	1%	173
CEN asi	Centella asiatica	Indian Pennywort	Tubestock	4	2%	347
CLE ari	Clematis aristata	Old Man's Beard	Tubestock	4	1%	173
CLE gly	Clematis glycinoides	Headache Vine	Tubestock	4	1%	173
EIN has	Einadia hastata	Berry Saltbush	Tubestock	4	3%	520
EIN tri	Einadia trigonos	Fishweed	Tubestock	4	2%	347
OPE dip	Opercularia diphylla	Opercularia	Tubestock	4	1%	173
PER dec	Persicaria decipiens	Slender Knotweed	Tubestock	4	1%	173
RUB par	Rubus parvifolius	Native Raspberry	Tubestock	4	1%	173
SOL pri	Solanum prinophyllum	Forest Nightshade	Tubestock	4	2%	347
TOTAL						10190
Species Proportion - Grasses/Groundcovers 55%, Shrubs 30%, Trees 15%						

TREE PLANTING SCHEDULE (DOWNSTREAM & UPSTREAM)					
Code	Botanical Name	Common Name	Pot Size	Density /m ²	Quantity
AF	Angophora floribunda	Rough-barked apple	100L	0.25	15
CG	Casuarina glauca	Swamp Oak	100L	0.25	18
EA	Eucalyptus amplifolia	Cabbage Gum	100L	0.25	9
EM	Eucalyptus moluccana	Grey Box	100L	0.25	22
ET	Eucalyptus tereticornis	Forest Red Gum	100L	0.25	13

NATIVE MEADOW HYDROSEEDING PLANTING SCHEDULE (UPSTREAM)			
Botanical Name	Common Name	% Proportion	Quantity
Arthropodium milleflorum	Pale Vanilla-lily	2%	0
Aristida vagans	Threawn Speargrass	2%	0
Asperula conferta	Common Woodruff	2%	0
Bothriochloa macra	Red Grass	5%	0
Brunoniella australis	Blue Trumpet	2%	0
Capillipedium spicigerum	Scented-top Grass	2%	0
Cheilanthes sieberi	Mulga Fern	2%	0
Chloris ventricosa	Plump Windmill Grass	5%	0
Chloris truncata	Windmill Grass	2%	0
Chorizema parviflorum	Eastern Flame Pea	3%	0
Cotula australis	Common Cotula	2%	0
Cymbopogon refractus	Barbed Wire Grass	5%	0
Oxytes brachypoda	Large Tick-trefoil	1%	0
Desmodium varians	Slender Tick-trefoil	1%	0
Dichelachne micrantha	Shorthair Plumegrass	2%	0
Dichelachne parva	Plumegrass	2%	0
Dichondra repens	Kidney Weed	2%	0
Arthropodium strictum	Chocolate Lily	2%	0
Arthropodium fimbriatum	Nodding Chocolate Lily	2%	0
Digitaria diffusa	Open Summer-grass	1%	0
Echinochloa colona	Awnless Barnyard Grass	2%	0
Echinopogon caespitosus var. caespitosus	Tufted Hedgehog-grass	3%	0
Echinopogon ovatus	Forest Hedgehog Grass	3%	0
Einadia hastata	Berry Saltbush	2%	0
Einadia polygonoides	Knotted goosefoot	2%	0
Eragrostis brownii	Brown's Lovegrass	2%	0
Eragrostis leptostachya	Paddock Lovegrass	2%	0
Eremophila debilis	Winter Apple	2%	0
Geranium solanderi var. solanderi	Native Geranium	2%	0
Microlaena stipoides var. stipoides	Weeping Grass	4%	0
Panicum effusum	Hairy Panic	2%	0
Paspalidium distans		5%	0
Poa labillardieri var. labillardieri	Tussock	5%	0
Lobelia purpurascens	Whiteroot	2%	0
Sorghum leiocladum	Wild Sorghum	2%	0
Sporobolus creber	Slender Rat's Tail Grass	2%	0
Themeda triandra	Kangaroo Grass	5%	0
Tricoryne elatior	Yellow Autumn-lily	2%	0
Wahlenbergia stricta var. stricta	Tall Bluebell	2%	0
Wahlenbergia gracilis	Australian Bluebell	2%	0
TOTAL		100%	0
Broad acre seeding apply via hydro seed. Need to equate seed volume per m ²			
Seed species ratio to differ according to availability			

NOTES

- PLANTING SCHEDULE TO BE READ IN CONJUNCTION WITH HIGHLAND VIEWS VEGETATION MANAGEMENT PLAN AND HIGHLAND VIEWS RIPARIAN REHABILITATION AWC 3-17857.
- REFER TO HIGHLAND VIEWS RIPARIAN REHABILITATION AWC 3-17857 FOR BIORETENTION PLANTING MOSAIC (AWC 3-17857_04) AND TERRESTRIAL PLANTING MATRIX (AWC 3-17857_07).

FITNESS EQUIPMENT				
CODE	NAME	SOFTFALL AREA (m2)	SUPPLIER	CONTACT
FITNESS NODE 1				
4641326	Slant Cap STD Leg press Pendulum Swing	14.7	Imagination Play	(03) 9738 1767
4641324	Slant Cap STD Leg Press - Fit Rider	17	Imagination Play	(03) 9738 1767
FITNESS NODE 2				
4641325	Slant Cap STD Ski Runner - Seated Rower	21.5	Imagination Play	(03) 9738 1767
4641093	Playdium Active Box Jump 0.60m	9.8	Imagination Play	(03) 9738 1767
FITNESS NODE 3				
4641287	Slant Cap Royal - Leg Press Step Up	17	Imagination Play	(03) 9738 1767
4641092	Playdium Active Box Jump 0.45m	9.8	Imagination Play	(03) 9738 1767
FITNESS NODE 4				
4641280	Slant Cap Fit Rider / Dip Bars	16.3	Imagination Play	(03) 9738 1767
4641095	Multi Dip Bench	16.1	Imagination Play	(03) 9738 1767

[Status] DEVELOPMENT APPLICATION

[Nom. Architect] Esther Dickens
RLA | RUD #1053

[File] 20150139-LD-CD100.DWG

[Print Date] 14 April 2021

History

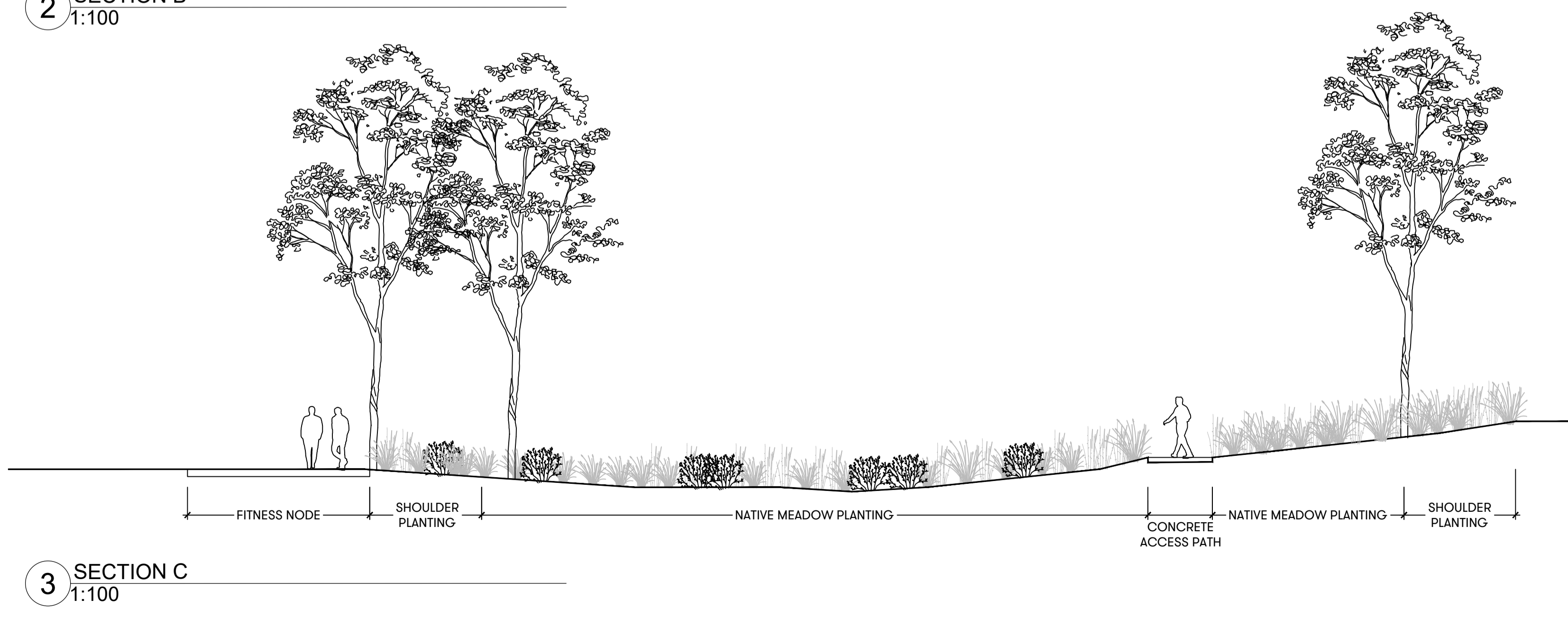
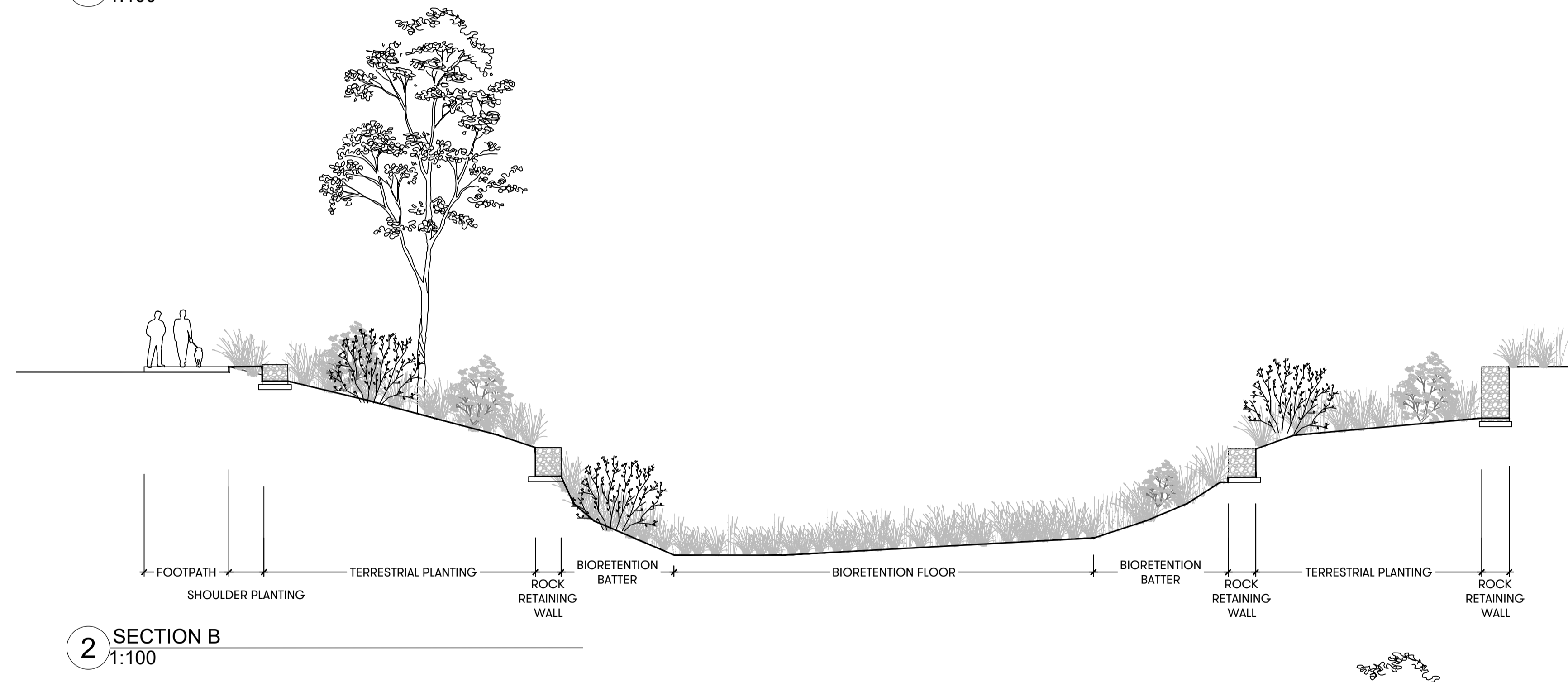
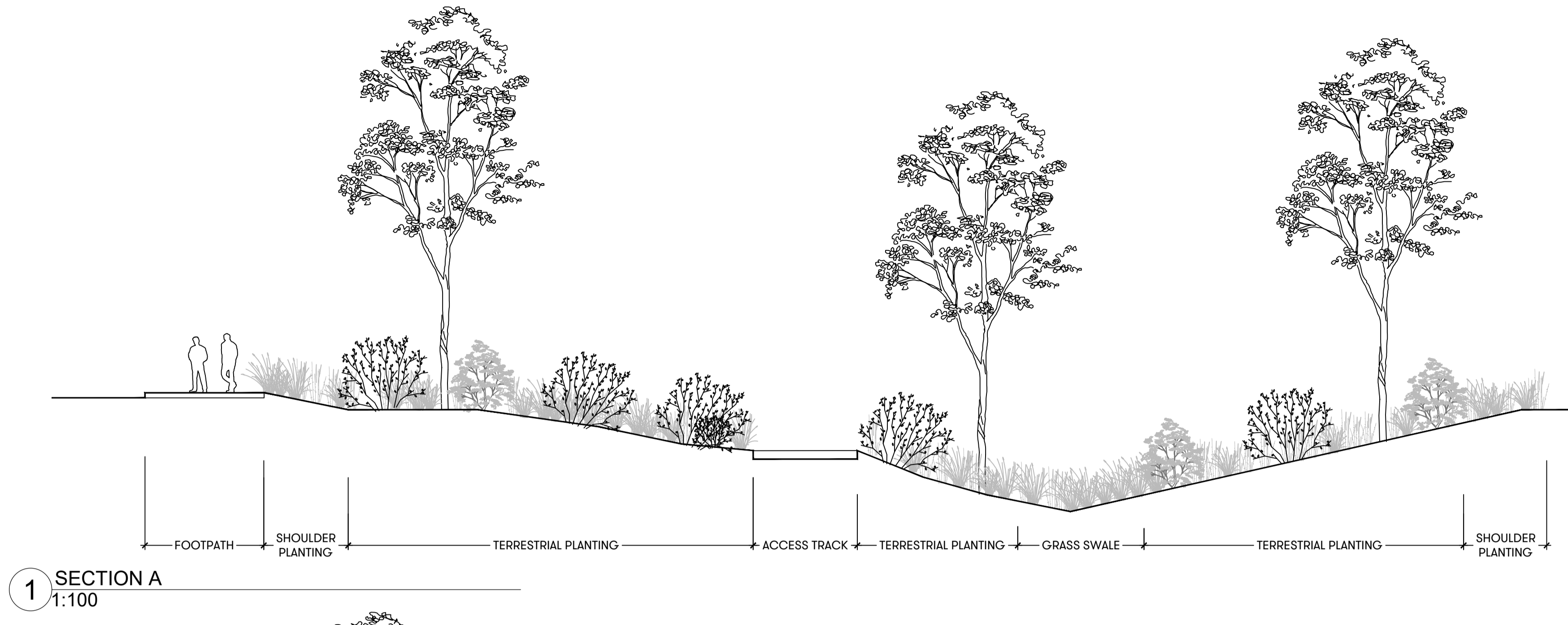
[Rev#]	[Description]	[Date]
A	FOR APPROVAL	08/03/2021
B	FOR APPROVAL	12/03/2021
C	FOR APPROVAL	31/03/2021
D	FOR APPROVAL	14/04/2021

NOT FOR CONSTRUCTION

History		
[Rev#]	[Description]	[Date]
A	FOR APPROVAL	08/03/2021
B	FOR APPROVAL	12/03/2021
C	FOR APPROVAL	31/03/2021
D	FOR APPROVAL	14/04/2021



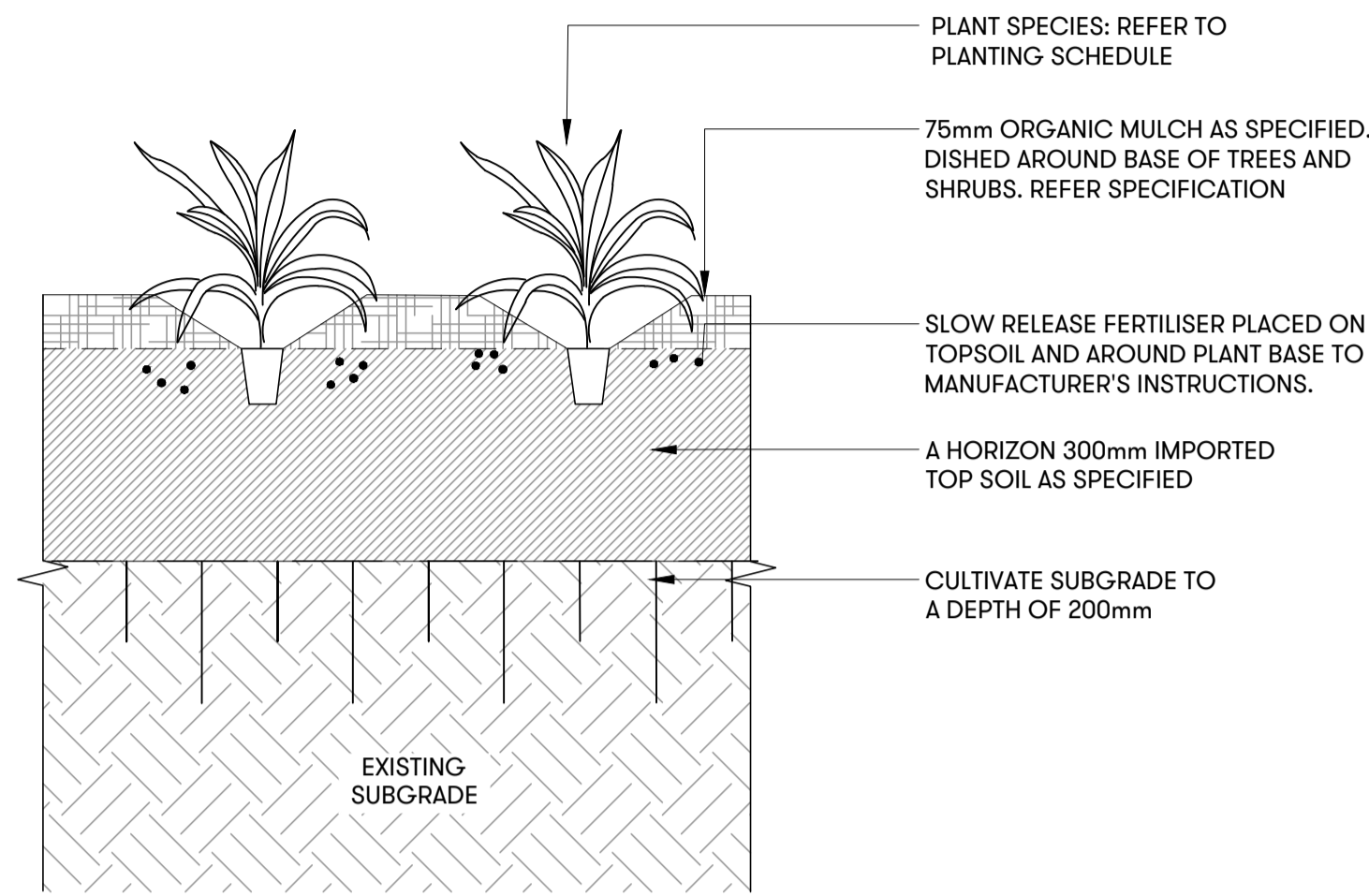
KEY PLAN



NOT FOR CONSTRUCTION

History

[Rev#]	[Description]	[Date]
A	FOR APPROVAL	08/03/2021
B	FOR APPROVAL	12/03/2021
C	FOR APPROVAL	31/03/2021
D	FOR APPROVAL	14/04/2021



1 TYPICAL DETAIL - PLANTING
1:10 @ A1

- GENERAL NOTES:
- DO NOT SCALE FROM DRAWINGS. WRITTEN DIMENSIONS GOVERN. IF IN DOUBT OBTAIN WRITTEN ADVICE FROM SCOTT CARVER OR WHERE APPLICABLE VIA THE PRINCIPAL'S REPRESENTATIVE.
 - ALL DIMENSIONS ARE IN MILLIMETRES UNLESS OTHERWISE STATED. ALL DIMENSIONS ARE MINIMUM SETTING OUT REQUIREMENTS.
 - THIS DRAWING IS AN UNCONTROLLED COPY UNLESS STAMPED WITH STATUS
 - THE CONTRACTOR MUST VERIFY ALL DIMENSIONS AND LEVELS ON SITE AS THIS IS NOT A SHOP DRAWING
 - THIS DRAWING MUST BE READ IN CONJUNCTION WITH THE TOTAL CONTRACT PACKAGE INCLUDING DRAWINGS AND SPECIFICATIONS OF ALL CONSULTANTS
 - THIS DRAWINGS ARE BASED ON SURVEY INFORMATION. SCOTT CARVER DO NOT WARRANT THE ACCURACY OF SURVEY INFORMATION

NOT FOR CONSTRUCTION