

75-87 Dunheved Circuit, St Marys, NSW 2760

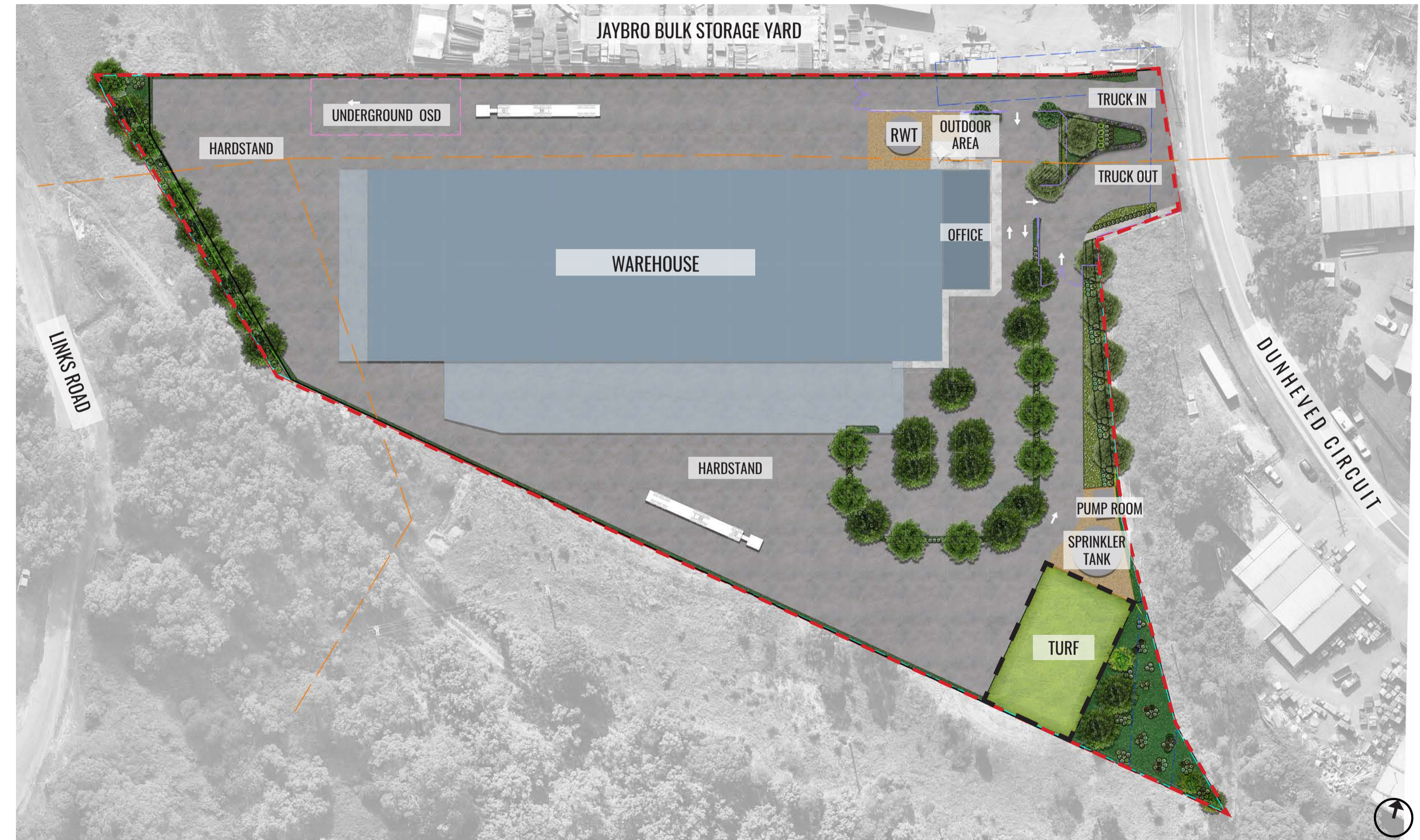
Landscape Documentation for Documentation Application



IMAGE TAKEN FROM NEARMAP 2020

Drawing Register

Dwg No.	Drawing Name
LDA-00	Landscape Cover Sheet
LDA-01	Landscape Masterplan
LDA-02	Landscape Detail Plan
LDA-03	Landscape Sections
LDA-04	Typical Specifications & Details
LDA-05	Planting Schedule & Imagery



KEY [---] PROPOSED FUTURE WAREHOUSE [---] SITE BOUNDARY

SITE PLAN

Drawing Title:
Landscape Cover Sheet
DWG No:

LDA-00

GEOSCAPES
LANDSCAPE ARCHITECTS
Suite 215, 284 Victoria Ave, Chatswood NSW 2067 Ph. (02) 9411 1485
www.geoscapes.com.au
ABN 84 620 205 781 ACN 620 205 781

Architect:

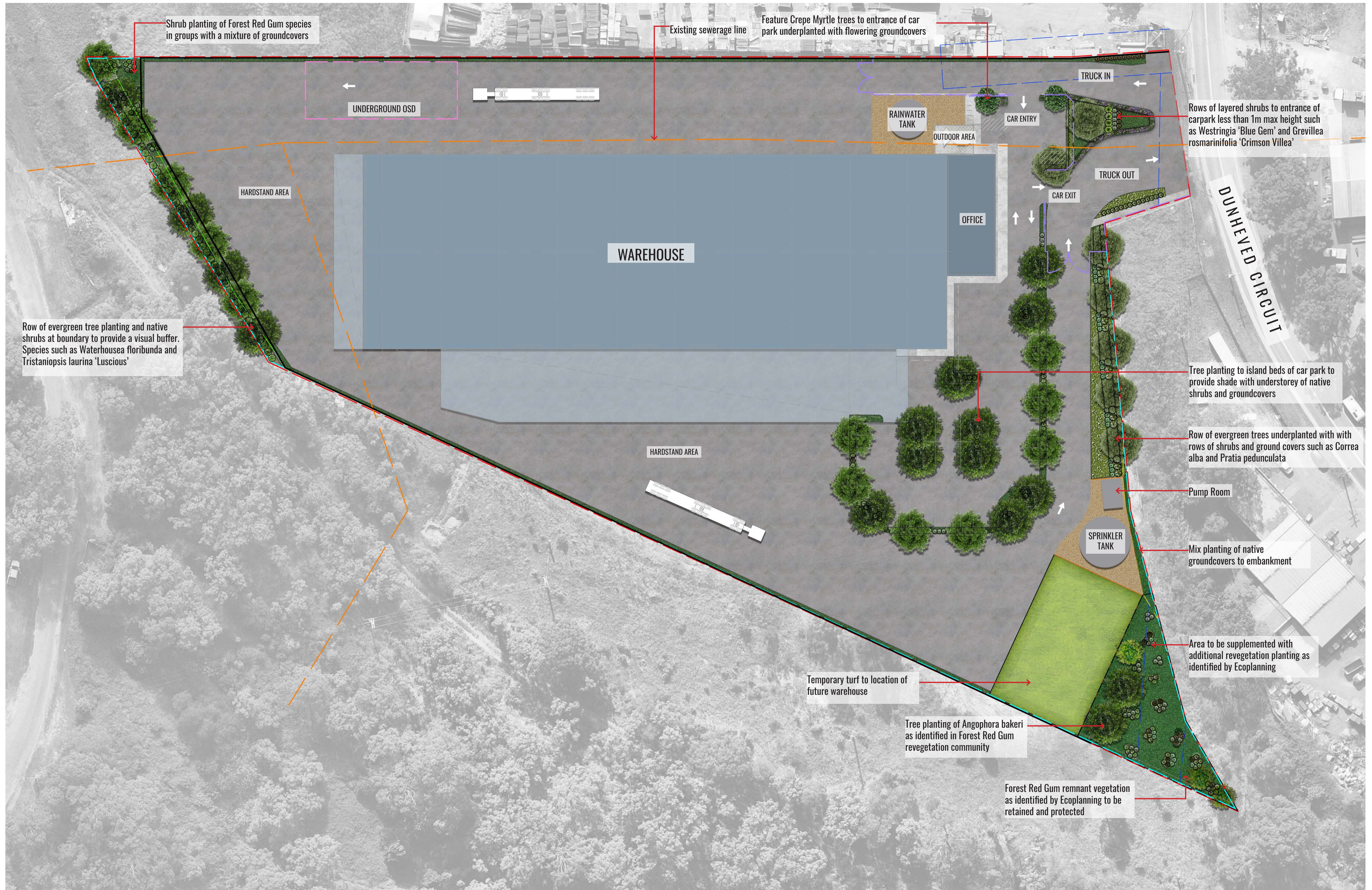
EMKC
advise | design | develop

Client:

Pipe Makers

Scale:	Date:	Job Number:	North:	Revision					FOR DEVELOPMENT APPLICATION	
N/A	14.10.21	201203	N/A	Rev	Date	Description	Drawn	Checked		
Project:				B	04.05.21	FOR DA	KC	BG		
				C	18.05.21	FOR DA	KC	BG		
				D	24.09.21	FOR DA	KC	BG		
				E	14.10.21	FOR DA	KC	BG		

75-87 Dunheved Circuit
St Mary's, NSW 2760



Drawing Title:
Landscape Masterplan
 DWG No:

LDA-01

GEOSCAPES
 LANDSCAPE ARCHITECTS
 Suite 215, 284 Victoria Ave, Chatswood NSW 2067 Ph. (02) 9411 1485
 www.geoscapes.com.au
 ABN 84 620 205 781 ACN 620 205 781

Architect:

EMKC
 advise | design | develop

Client:

Pipe Makers

Scale:

1:350 @ A1

Date:

14.10.21

Job Number:

201203

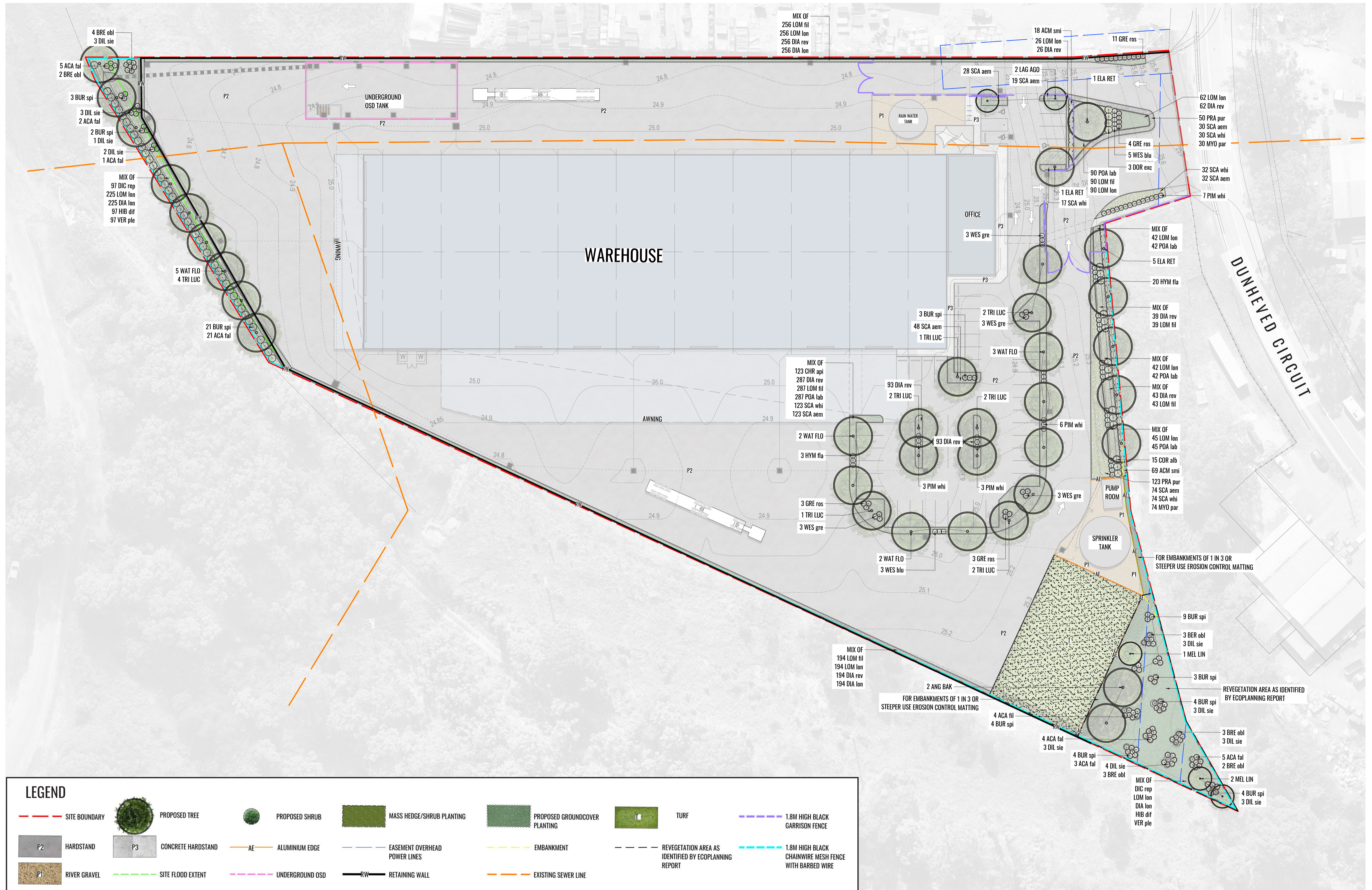
North:



Project:

75-87 Dunheved Circuit
 St Mary's, NSW 2760

Revision			FOR DEVELOPMENT APPLICATION	
Rev	Date	Description	Drawn	Checked
B	04.05.21	FOR DA	KC	BG
C	18.05.21	FOR DA	KC	BG
D	24.09.21	FOR DA	KC	BG
E	14.10.21	FOR DA	KC	BG



Drawing Title:
Landscape Detail Plan
 DWG No:

LDA-02

GEOSCAPES
 LANDSCAPE ARCHITECTS
 Suite 215, 284 Victoria Ave, Chatswood NSW 2067 Ph. (02) 9411 1485
 www.geoscapes.com.au
 ABN 84 620 205 781 ACN 620 205 781

Architect:

EMKC
 advise | design | develop

Client:

Pipe Makers

Scale:

1:350 @A1

Date:

14.10.21

Job Number:

201203

North:



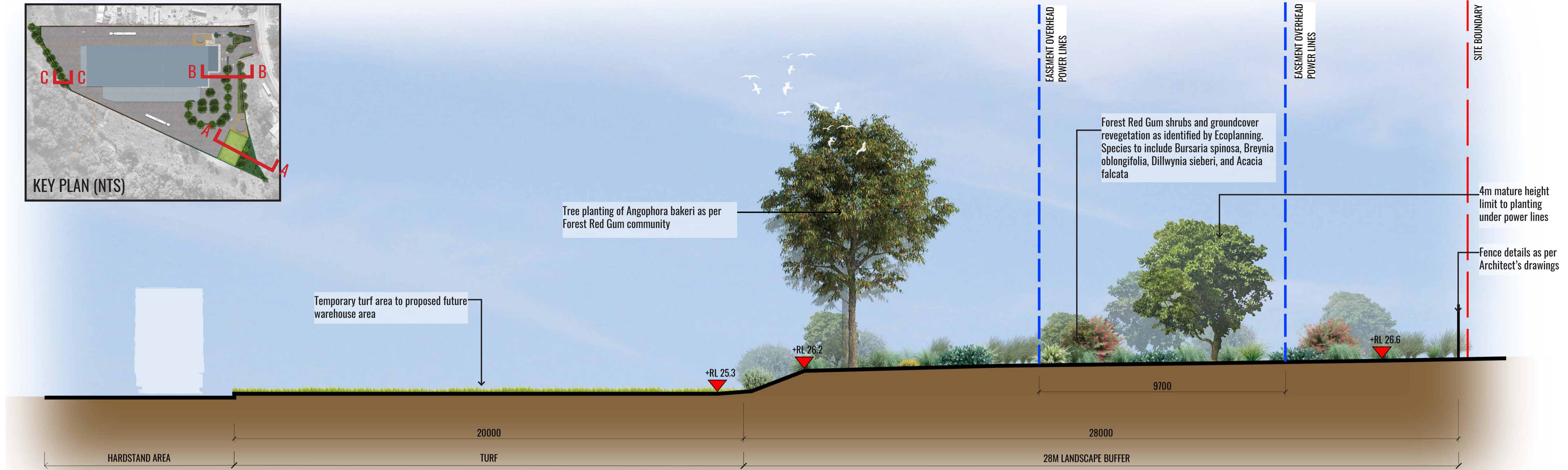
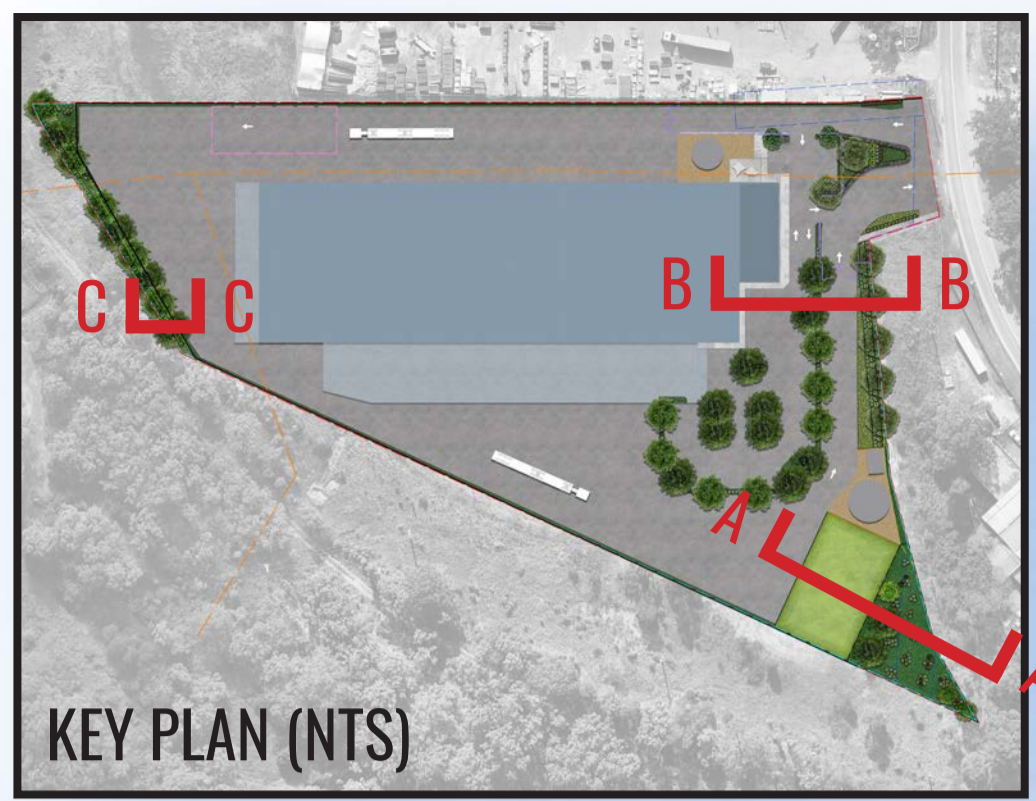
Project:

75-87 Dunheved Circuit
 St Mary's, NSW 2760

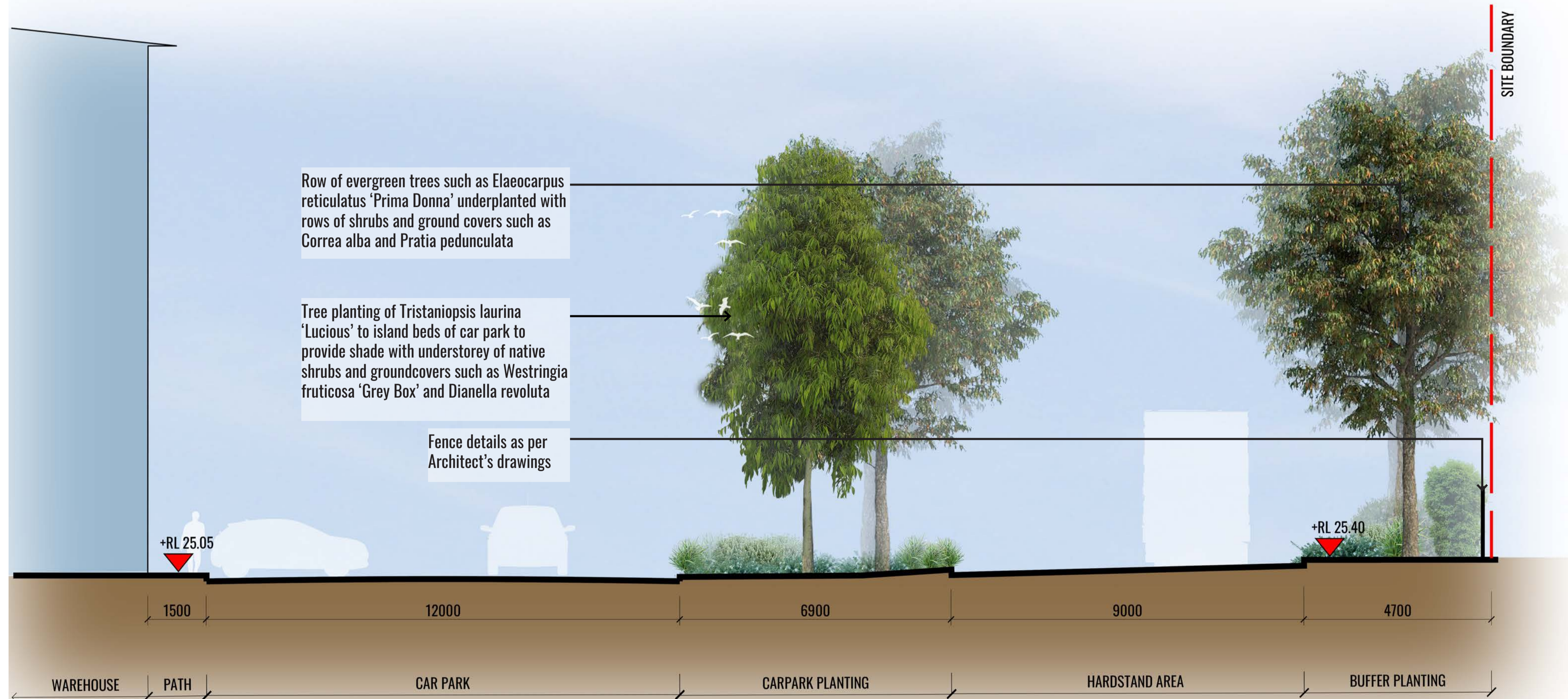
Revision

Rev	Date	Description	Drawn	Checked
B	04.05.21	FOR DA	KC	BG
C	18.05.21	FOR DA	KC	BG
D	24.09.21	FOR DA	KC	BG
E	14.10.21	FOR DA	KC	BG

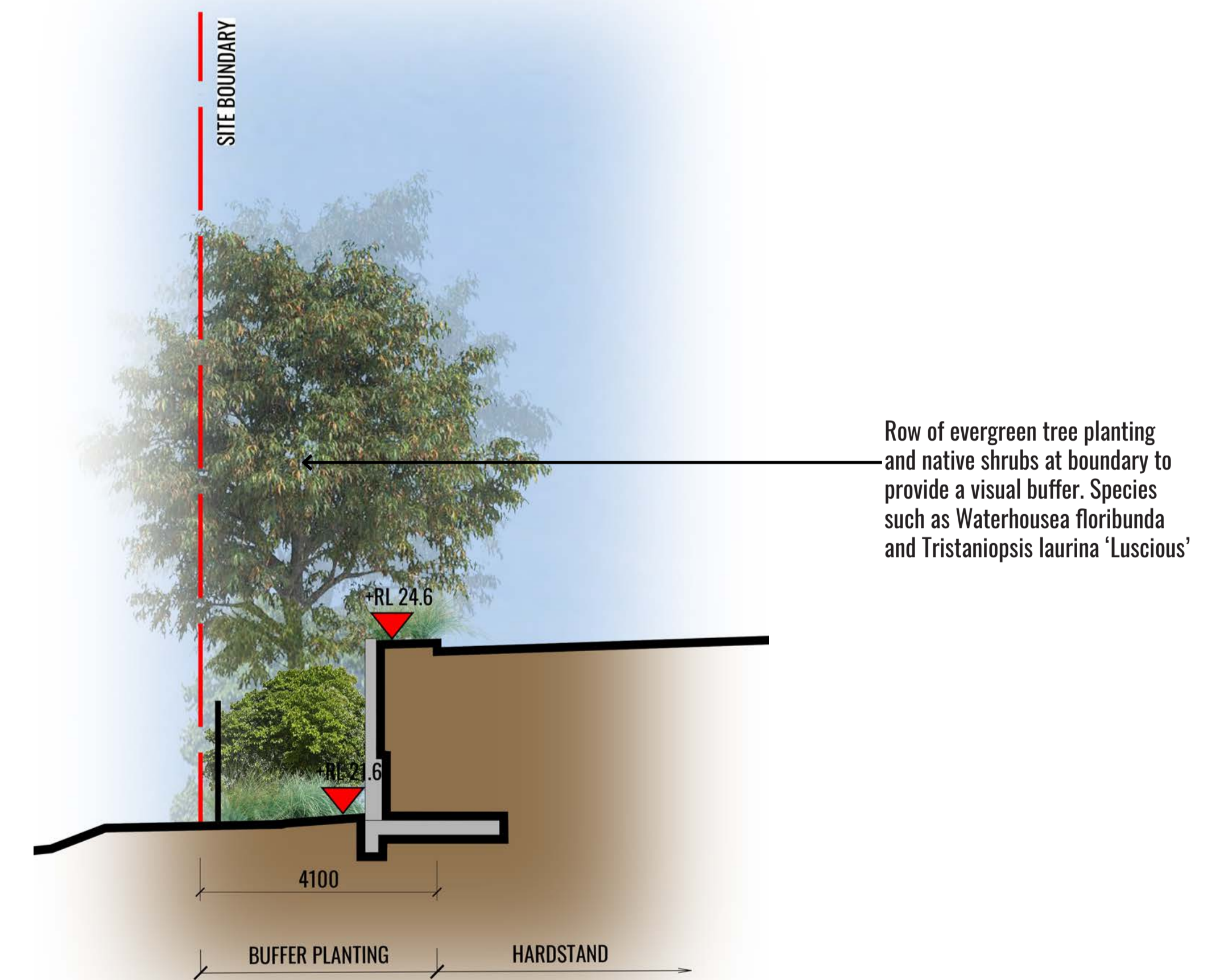
FOR DEVELOPMENT APPLICATION



SECTION AA



SECTION BB



SECTION CC

Drawing Title:
Landscape Sections
DWG No:

LDA-03

GEOSCAPES
LANDSCAPE ARCHITECTS
Suite 215, 284 Victoria Ave, Chatswood NSW 2067 Ph. (02) 9411 1485
www.geoscapes.com.au
ABN 84 620 205 781 ACN 620 205 781

Architect:

EMKC
advise | design | develop

Client:

Pipe Makers

Scale:	Date:	Job Number:	North:	Revision				FOR DEVELOPMENT APPLICATION	
1:75 @ A1	14.10.21	201203	N/A	Rev	Date	Description	Drawn	Checked	
Project:				B	04.05.21	FOR DA	KC	BG	
				C	18.05.21	FOR DA	KC	BG	
				D	24.09.21	FOR DA	KC	BG	
				E	14.10.21	FOR DA	KC	BG	

75-87 Dunheved Circuit
St Mary's, NSW 2760

MAINTENANCE PLAN

Maintenance shall mean the care and maintenance of the landscape works by accepted horticultural practice as rectifying any defects that become apparent in the landscape works under normal use. The landscape contractor shall attend the site on a **weekly basis** to maintain the landscape works commencing from practical completion.

Rubbish Removal

The Landscape Contractor shall undertake rubbish removal from the site on a **weekly basis** to ensure the site remains in tidy condition.

Weed Eradication

Weed growth that may occur in grassed, planted or mulched areas is to be removed using environmentally acceptable methods i.e. non-residual glyphosate herbicide (e.g. 'Roundup', applied in accordance with the manufacturer's direction.

Tree Replacement

Trees shall show signs of healthy vigorous growth and be free from disease and not exhibit signs of stress prior to handover to the client. Any trees or plant that die or fail to thrive, or are damaged or stolen will be replaced. Replacement material shall have the initial maintenance period extended in accordance with the landscape contract conditions. Trees and plant materials shall be equal to the minimum requirements of species specified and approved material delivered to site. Should the condition decline from the approved sample the Superintendent reserves the right to reject the tree / plants.

Frequency: as required.

Stakes

Adjust and/or replace stakes and ties where required. Remove staking and guying when instructed by the Superintendent

Pruning

Selective pruning may be required during the establishment period to promote a balanced canopy structure. These activities shall be carried out to the best horticultural and industry practice. All pruned material is to be removed from site.

Mulched Surfaces

All planter beds and garden areas shall have a minimum depth of 75mm organic mulch. All mulch is to be free of deleterious matter such as soil, weeds, sticks and should conform to AS 4454.

Mulched surfaces are to be kept clean and tidy and free of any deleterious material and foreign matter. Reinstall depths to a uniform level of 75mm with mulch as specified, mulch to be free of any wood material impregnated with CCA or similar toxic treatment. Top up mulch levels prior to handover to client & estate management.

Watering

Implement an appropriate hand watering regime in areas not irrigated in association with current watering programme to maintain plant health and vigour. The program shall reflect seasonal conditions and plant species.

Frequency: Weekly or as required.

Soil In Natural Ground

Non-Australian native garden beds to have soil installed consisting of 50% existing site topsoil and 50% new topsoil equal or equivalent to 'Organic Garden Mix' as supplied by Australian Native Landscapes. Australian native garden beds to have soil installed consisting of 50% existing site topsoil and 50% new topsoil equal or equivalent to 'Native Low 'P' Mix' as supplied by Australian Native Landscapes. Soil to conform to AS4419 refer to typical detail.

Pest and Disease Control

The Landscape Contractor shall spray for pests and disease infestations when the pest and fungal attack has been positively identified and when their populations have increased to a point that will become detrimental to plant growth. Apply all pesticides to manufacturer's directions.

Frequency: weekly inspection

Fertilising

Generally check for signs of nutrient deficiencies (yellowing of leaves, failure to thrive), and adapt fertiliser regime to suit. Fertiliser should be applied at the beginning and the end of the (summer) growing season.

Irrigation

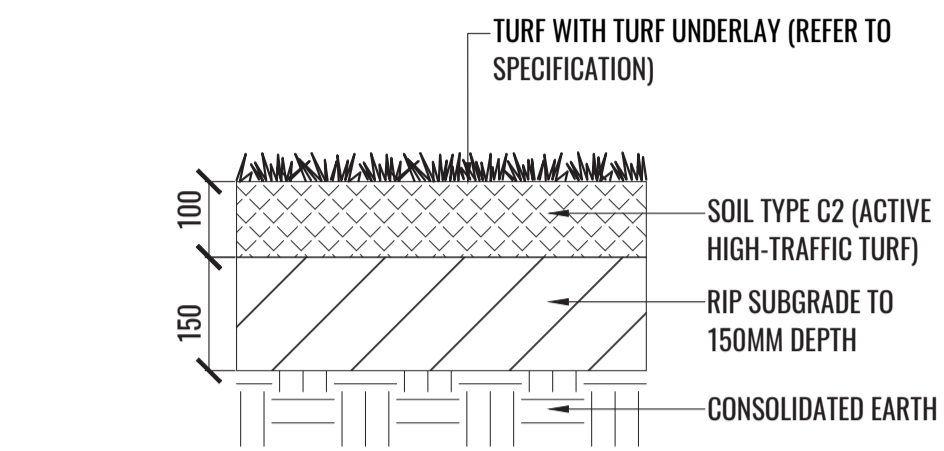
A sub surface dripper style, electrically automated self timed irrigation system is recommended to be supplied to all garden bed areas and planter container. Regular checks are to be made to ensure continued successful operation. The Landscape Contractor shall be responsible for coordination and engagement of a specialist irrigation designer and installation contractor to design, supply and install an automatic subterranean drip irrigation system to all raised planter beds.

The irrigation system will need to provide designated landscaped areas with enough water for vigorous healthy plant growth. As a general rule landscaped areas will need 20-25mm, species dependant, of water per week. The landscape Contractor will need to monitor natural rainfall using a rain switch in order to set irrigation flow rates accordingly on a monthly basis.

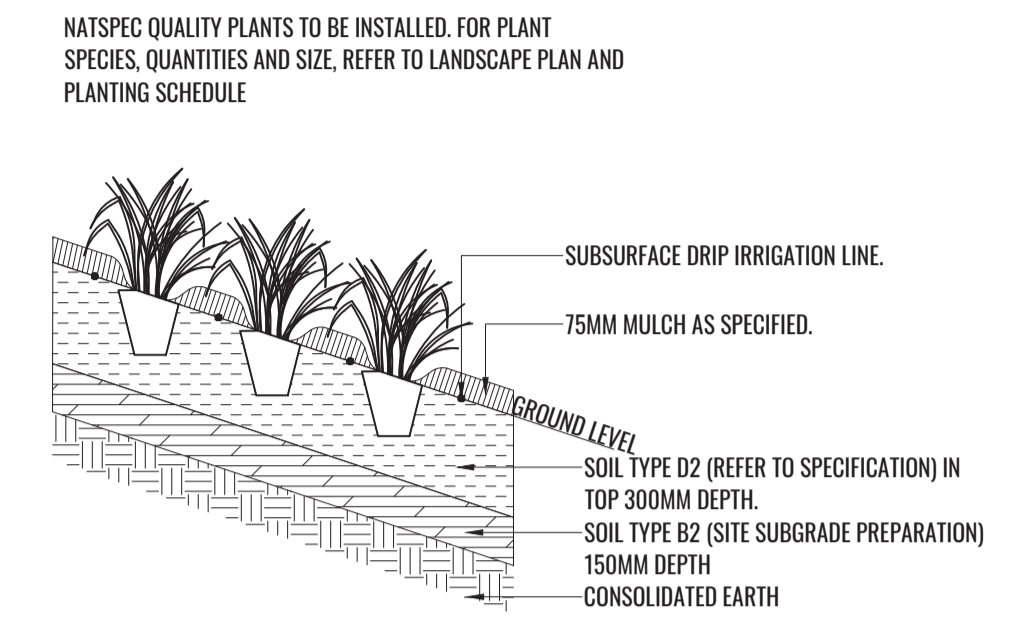
Standards

All grown or purchased plant stock must conform to all the conditions and requirements given in NATSPEC Guide: Specifying Trees. Soils to be in accordance with AS4419, mulching composts and conditioners to be in accordance with AS4454. Soils should conform to best practice specifications as listed in the Landscape Soils Handbook (Simon Leake & Elke Haegel 2017).

TYPICAL LANDSCAPE DETAILS

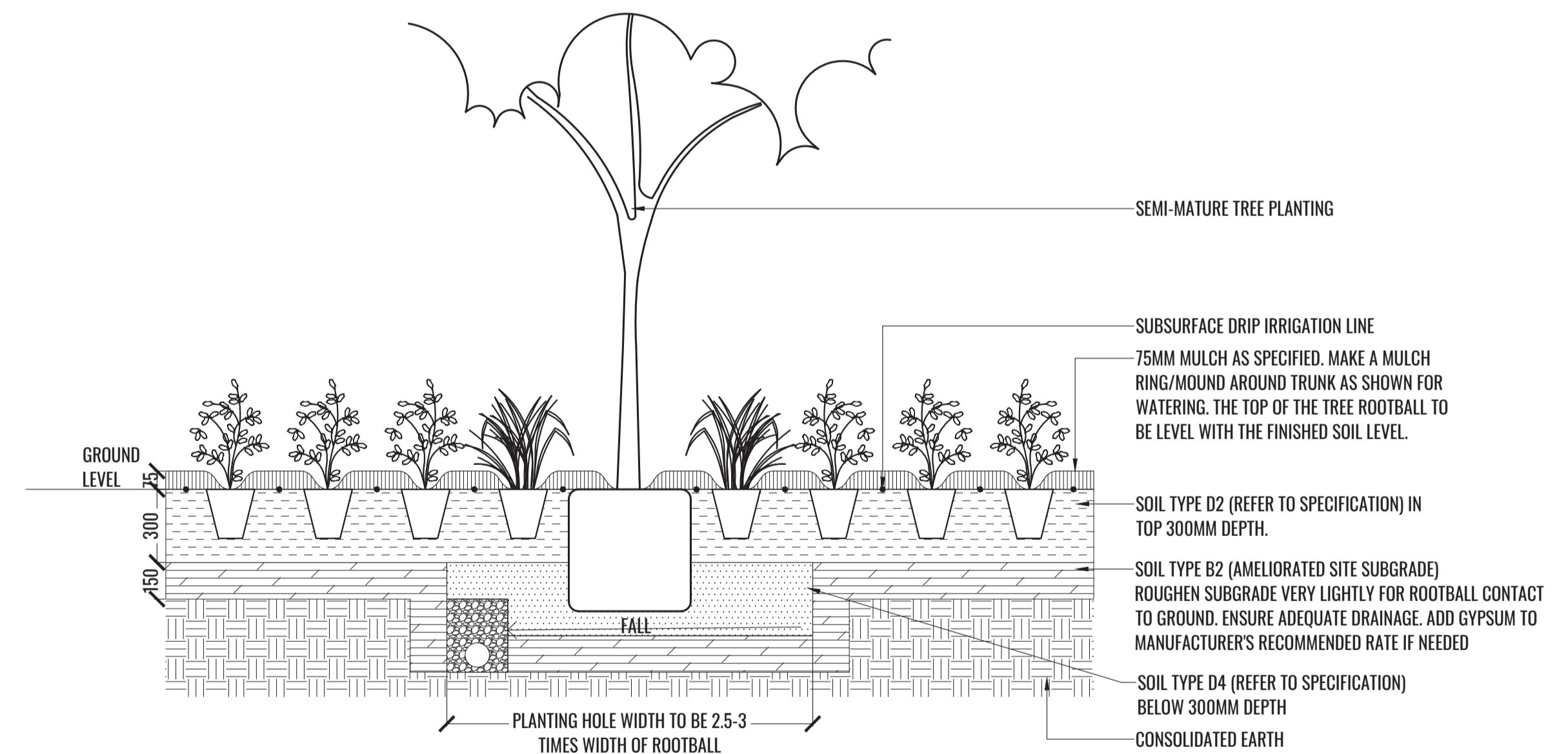


1 TURF DETAIL
TYPICAL SECTION SCALE 1:10



2 SLOPE PLANTING 1 IN 3 TYPICAL DETAIL
TYPICAL SECTION SCALE 1:20

TREE/SHRUB SIZE AND QUALITY TO BE TO NATSPEC STANDARD. SPECIES IS TO BE AS PER PLAN AND PLANT SCHEDULE. ENSURE ONLY HEALTHY AND VIGOROUS, DISEASE FREE, WELL MAINTAINED PLANTS ARE USED. TAKE CARE TO ENSURE FOLIAGE, BRANCHES, TRUNKS AND ROOT CROWNS ARE NOT DAMAGED BEFORE, DURING AND AFTER PLANTING. ENSURE OPTIMUM MAINTENANCE AND ESTABLISHMENT OF TREES/SHRUBS OCCURS AS SOON AS THEY ARE AT SITE



THOROUGHLY SOAK THE ROOTBALL OF TREE WITH FRESH WATER BEFORE TAKING OFF POT OR BAG. WHEN PLANTING HOLE IS COMPLETE USE A SHARP SPADE TO SHAVE OFF 20-50MM OF THE SIDES AND BASE OF ROOTBALL (TO ROOD PRUNE IT) BEFORE CAREFULLY PLACING INTO PLANTING HOLE. IF NORTH IS MARKED ON THE TREE, ENSURE ORIENTATION IS CORRECT WITH NORTH MARKING TO THE NORTH.

- REMOVE ANY STAKES, TIES AND LABELS. WATER ROOTBALL THOROUGHLY.
- TOP OF ROOTBALL TO FINISH FLUSH WITH TOP OF SOIL

3 MASS PLANTING AND TREE DETAIL
TYPICAL SECTION SCALE 1:20

Drawing Title:
Typical Specifications & Details
DWG No:
LDA-04

GEOSCAPES
LANDSCAPE ARCHITECTS
Suite 215, 284 Victoria Ave, Chatswood NSW 2067 Ph. (02) 9411 1485
www.geoscapes.com.au
ABN 84 620 205 781 ACN 620 205 781

Architect:
EMKC
advise | design | develop

Client:
Pipe Makers

Scale:	Date:	Job Number:	North:	Revision				
As Shown @ A1	14.10.21	201203	N/A	Rev	Date	Description	Drawn	Checked
Project:	75-87 Dunheved Circuit St Mary's, NSW 2760			B	04.05.21	FOR DA	KC	BG
				C	18.05.21	FOR DA	KC	BG
				D	24.09.21	FOR DA	KC	BG
				E	14.10.21	FOR DA	KC	BG

PLANTING SCHEDULE

Code	Botanical Name	Common Name	Mature Height	Native	Spacing	Pot Size	Qty**
Trees							
ANG BAK	<i>Angophra bakeri</i>	Narrow-leaved Apple	10m	✓	As Shown	75L	2
ELA RET	<i>Elaeocarpus reticulatus</i> 'Prima Donna'	Blueberry Ash	9m	✓	As Shown	75L	7
LAG AGO	<i>Lagerstroemia indica</i> 'Acoma'	White Crepe Myrtle	3.5m		As Shown	75L	2
MEL LIN	<i>Melaleuca linariifolia</i>	Narrow-leaved paperbark	8m	✓	As Shown	75L	4
TRI LUC	<i>Tristaniopsis laurina</i> 'Lucious'	Water Gum	8m		As Shown	75L	14
WAT FLO	<i>Waterhousea floribunda</i>	Weeping Lily Pilly	15m	✓	As Shown	75L	12
Shrubs							
ACA fal	<i>Acacia falcata</i>	Sickle Wattle	5m	✓	As Shown	200mm	43
ACM smi	<i>Acmena smithii</i> 'Sublime'	Lilly Pilly	3m	✓	750mm Ctrs	200mm	87
BRE obl	<i>Breynia oblongifolia</i>	Coffee Bush	3m	✓	As Shown	200mm	10
BUR spi	<i>Bursaria spinosa</i>	Boxthorn	4m	✓	As Shown	200mm	57
COR alb	<i>Correa alba</i>	White Correa	1.2m	✓	As Shown	200mm	15
DIL sie	<i>Dillwynia sieberi</i>	Prickly Parrot Pea	2.5m	✓	As Shown	200mm	28
DOR exc	<i>Doryanthes excelsa</i>	Gynea Lilly	1.5m	✓	As Shown	200mm	3
GRE ros	<i>Grevillea rosmarinifolia</i> 'Crimson Villea'	Crimson Villea Grevillea	0.7m	✓	As Shown	200mm	21
HYM fla	<i>Hymenosporum flavum</i> 'Lushious'	Lushious Native Frangipani	0.5m	✓	As Shown	200mm	23
PIM whi	<i>Pimelea</i> 'White Jewel'	White Jewel Rice Flower	0.4m	✓	As Shown	200mm	19
WES blu	<i>Westringia</i> 'Blue Gem' [WES03]	Native Rosemary	1-1.5m	✓	As Shown	200mm	11
WES gre	<i>Westringia fruticosa</i> 'Grey Box' [WES04]	Grey Box Native Rosemary	0.4m	✓	As Shown	200mm	12
Grasses + Groundcover							
CHR api	<i>Chrysocephalum apiculatum</i>	Yellow Button	0.3m	✓	3/m2	Tubestock	123
DIC rep	<i>Dichondra repens</i>	Kidney Plant	0.1m	✓	3/m2	Tubestock	97*
DIA lon	<i>Dianella longifolia</i>	Flax Lily	1.5m	✓	7/m2	Tubestock	675*
DIA rev	<i>Dianella revoluta</i>	Flax Lily	0.5m	✓	7/m2	Tubestock	1093
HIB dif	<i>Hibbertia diffusa</i>	Wedge Guinea Flower	0.5m	✓	3/m2	Tubestock	97*
LOM fil	<i>Lomandra filiformis</i>	Wattle Mat Rush	0.5m	✓	7/m2	Tubestock	909
LOM lon	<i>Lomandra longifolia</i>	Spiny Mat Rush	0.8m	✓	7/m2	Tubestock	982*
MYO par	<i>Myoporum parvifolia</i> 'Yareena' [PARV01]	Creeping Boobialla	0.1m	✓	3/m2	140mm	104
POA lab	<i>Poa labillarderi</i>	Tussock Grass	0.5m	✓	7/m2	Tubestock	506
PRA pur	<i>Pratia pedunculata</i>	Blue Star Creeper	0.2m	✓	5/m2	Tubestock	173
SCA aem	<i>Scaevola aemula</i>	Fan Flower	0.5m	✓	3/m2	140mm	354
SCA whi	<i>Scaevola albida</i> 'White Carpet'	White Fan Flower	0.1-0.2m	✓	3/m2	140mm	276
VER ple	<i>Veronica plebeia</i>	Trailing Speedwell	0.1m	✓	3/m2	Tubestock	97*

* Numbers to be advised by Ecologist during construction

** Final numbers to be confirmed at Construction Certificate Stage

PLANT IMAGES



Elaeocarpus reticulatus 'Prima Donna'



Lagerstroemia indica 'Acoma'



Melaleuca linariifolia



Waterhousea floribunda



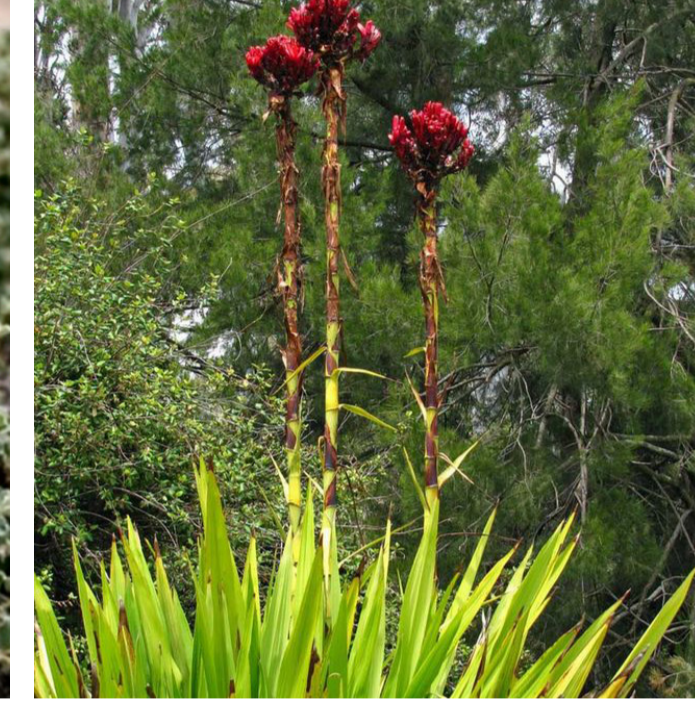
Acmena smithii 'Sublime'



Bursaria spinosa



Correa alba



Doryanthes excelsa



Pimelea 'White Jewel'



Westringia fruticosa 'Grey Box'



Dichondra repens



Dianella revoluta



Pratia pedunculata



Scaevola aemula



Lomandra longifolia

Drawing Title:
Planting Schedule & Imagery
DWG No:
LDA-05

GEOSCAPES
LANDSCAPE ARCHITECTS
Suite 215, 284 Victoria Ave, Chatswood NSW 2067 Ph. (02) 9411 1485
www.geoscapes.com.au
ABN 84 620 205 781 ACN 620 205 781

Architect:

EMKC
advise | design | develop

Client:

Pipe Makers

Scale:	Date:	Job Number:	North:	Revision				
N/A	14.10.21	201203	N/A	FOR DEVELOPMENT APPLICATION				
Project:	75-87 Dunheved Circuit St Mary's, NSW 2760	Rev		Date	Description	Drawn	Checked	
		B	04.05.21	FOR DA	KC	BG		
		C	18.05.21	FOR DA	KC	BG		
		D	24.09.21	FOR DA	KC	BG		
E	14.10.21	FOR DA	KC	BG				