

CLEARING WORKS ALONG TRACK TO OCCUR AS REQUIRED TO PROVIDE ACCESS TO BASE OF BRIDGE AREA

STRUCTURE TYPE: POST TENSIONED CONCRETE BRIDGE
SLAB DECK LENGTH: 99.42m
AREA: 779.19 sqm

SOUTH CREEK

BLACKTOWN LGA

PENRITH LGA

LGA BOUNDARY

EXISTING HAUL ROAD



LOCATION PLAN
SCALE N.T.S.

LEGEND	
	EXTENT OF WORKS
	STRUCTURE TO BE DEMOLISHED
	ACCESS TRACK
	SEDIMENT FENCE
	VEGETATION CLEARING ZONE
	TURBIDITY BARRIER

0 10 20 30 40 50m
SCALE 1:500 @A1

PROVISIONAL DEMOLITION METHODOLOGY

1. CLEAR ACCESS TO SITE INCLUDING REMOVAL OF VEGETATION AS INDICATED TO ENABLE WORKS AND ESTABLISHMENT OF HEAVY PLANT AND EQUIPMENT.
2. ENSURE ALL SERVICES HAVE BEEN ISOLATED.
3. PLACE APPROPRIATE EROSION AND SEDIMENT CONTROLS FOR EXISTING CREEK.
4. DISMANTLE BRIDGE IN ACCORDANCE WITH CONTRACTOR'S METHODOLOGY (TO BE FINALISED).
5. MATERIALS WILL BE SORTED AND EITHER TRANSFERRED TO NEARBY WASTE MANAGEMENT FACILITIES AND/OR FOR REUSE OFFSITE.
6. AREA WILL BE LEVELLED, FENCED OFF AND MADE SAFE ON COMPLETION OF DEMOLITION WORKS.
7. FINAL INSPECTION WILL BE CONDUCTED TO CLOSE OUT ANY DEFECTS.

XREFS: XR-89914020-CI-23-SURVEY: XR-89914020-CI-23-SOUTH CREEK BRIDGE: 18022 East West Connector Aerial: XR-89914020-CI-VARIOUS SITE BOUNDARY
CAD File: N:\Parametric\Projects\89914020_CENTRAL_PRECINCT_ADI\STI\MARYS\Drawings\01_Mastplanning\Sketches\89914020_SK74111.dwg

Rev.	Date	Description	Des.	Verif.	Appd.
3	19.02.18	RE-ISSUED FOR DEVELOPMENT APPLICATION	HL		ARM
2	16.02.18	ISSUED FOR DEVELOPMENT APPLICATION	HL		ARM
1	14.02.18	ISSUED FOR CLIENT REVIEW	HL		ARM

© Cardno Limited All Rights Reserved.
This document is produced by Cardno Limited solely for the benefit of and use by the client in accordance with the terms of the retainer. Cardno Limited does not and shall not assume any responsibility or liability whatsoever to any third party arising out of any use or reliance by any third party on the content of this document.

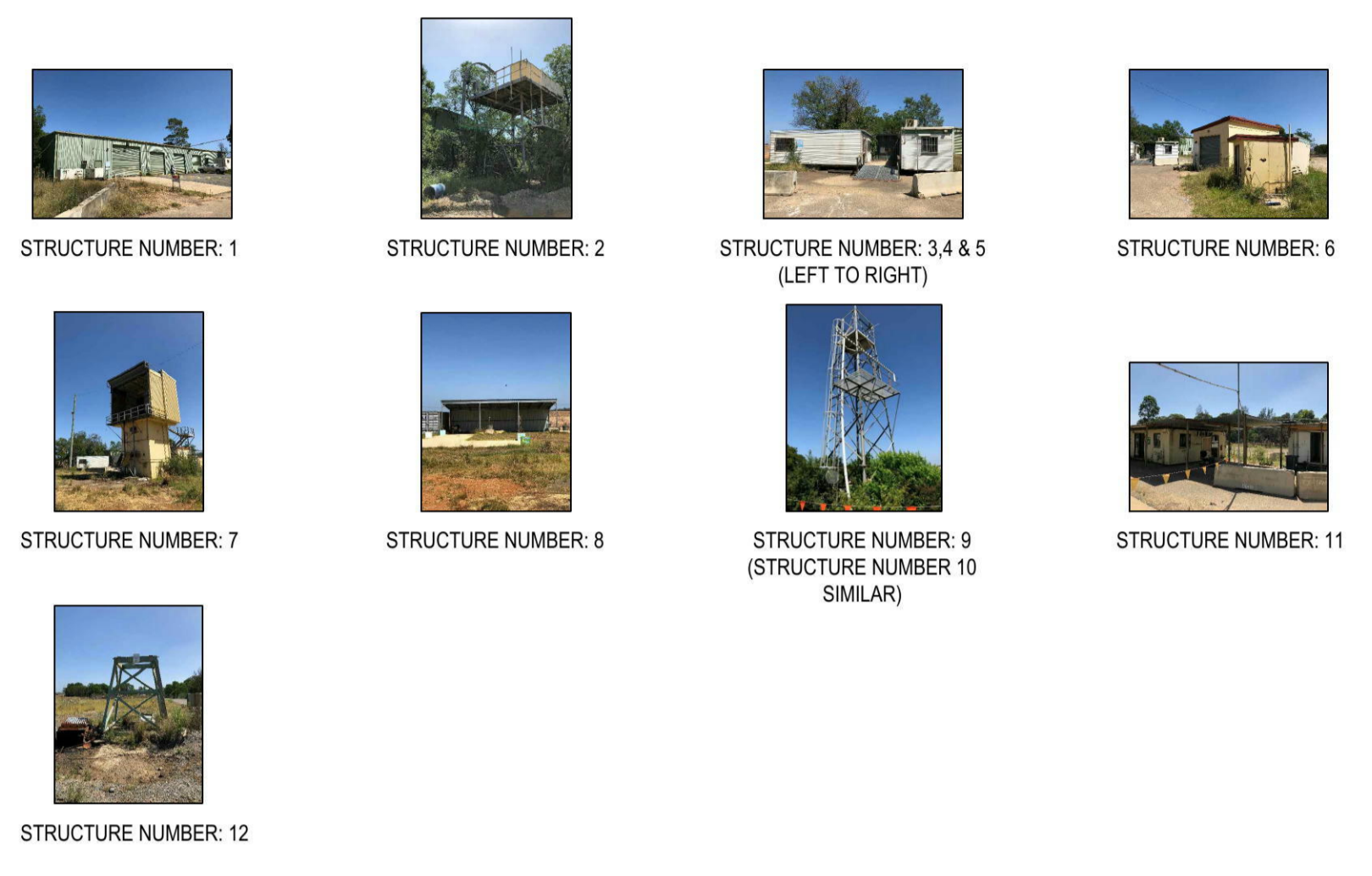
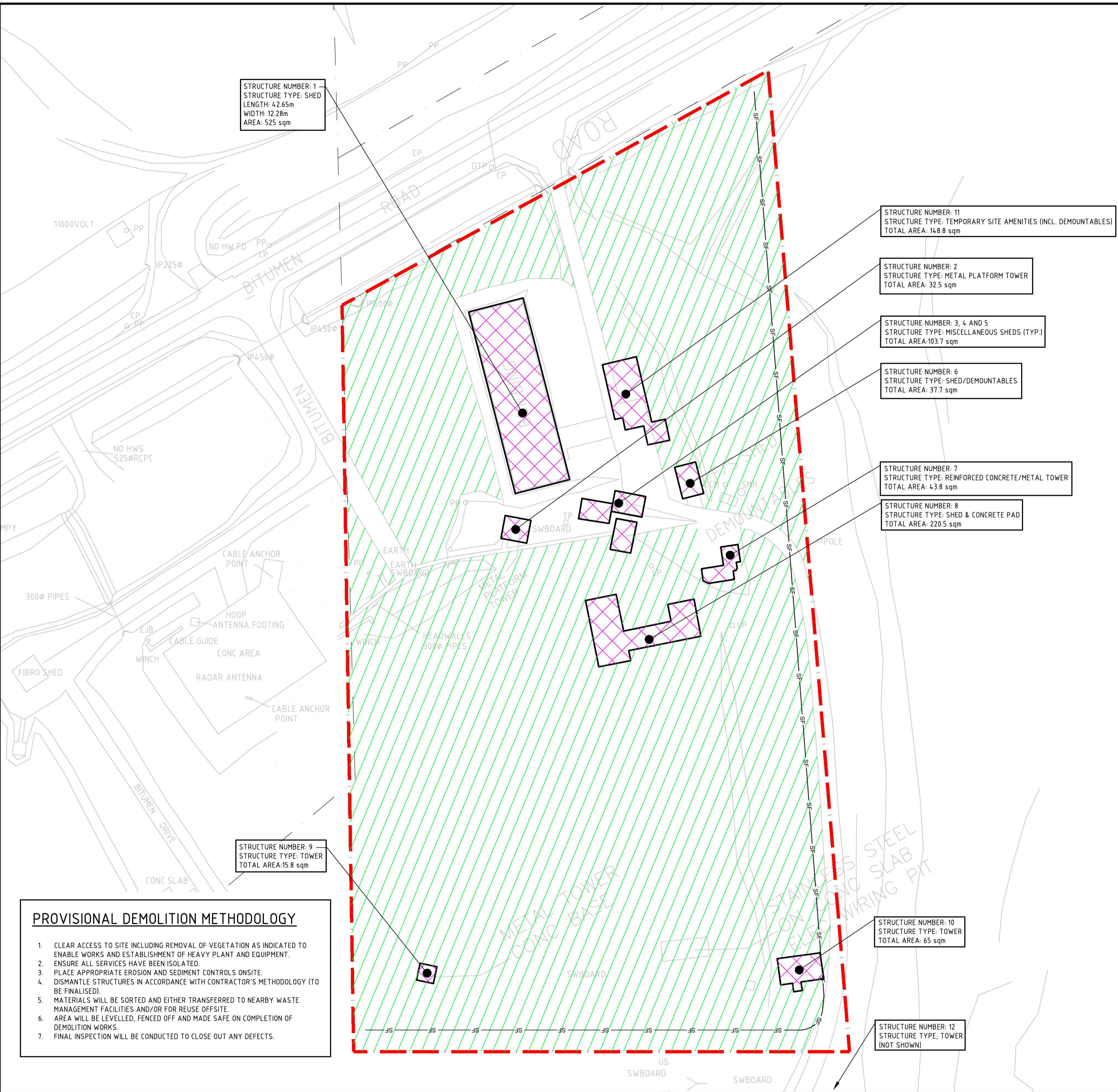
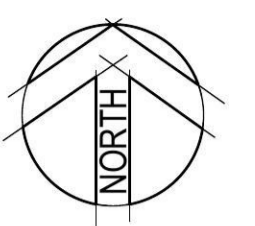
Cardno (NSWACT) Pty Ltd | ABN 95 001 145 035
Level 9, The Forum, 203 Pacific Highway
St Leonards, NSW 2065
Tel: 02 9496 7700 Fax: 02 9439 5170
Web: www.cardno.com.au

Drawn	Date	Client
HL	14.02.18	LENDDLEASE
Checked	Date	Project
ARM	14.02.18	JORDAN SPRINGS EAST
Designed	Date	DEMOLITION OF SOUTH CREEK BRIDGE
Verified	Date	DEVELOPMENT APPLICATION
Approved	Date	Title
		DEMOLITION, CLEARING, EROSION AND SEDIMENT CONTROL PLAN

Datum	Scale	Size
A.H.D.	1:500	A1
Drawing Number	Revision	
89914020-SK740	3	

Status: **FOR APPROVAL**
NOT TO BE USED FOR CONSTRUCTION PURPOSES

DATE PLOTTED: 19 February 2018 5:16 PM BY: ANDREW MORRIS



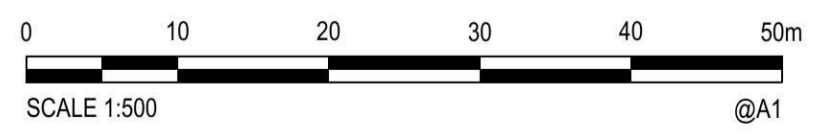
LOCATION PLAN
SCALE N.T.S.

PROVISIONAL DEMOLITION METHODOLOGY

1. CLEAR ACCESS TO SITE INCLUDING REMOVAL OF VEGETATION AS INDICATED TO ENABLE WORKS AND ESTABLISHMENT OF HEAVY PLANT AND EQUIPMENT.
2. ENSURE ALL SERVICES HAVE BEEN ISOLATED.
3. PLACE APPROPRIATE EROSION AND SEDIMENT CONTROLS ONSITE.
4. DISMANTLE STRUCTURES IN ACCORDANCE WITH CONTRACTOR'S METHODOLOGY (TO BE FINALISED).
5. MATERIALS WILL BE SORTED AND EITHER TRANSFERRED TO NEARBY WASTE MANAGEMENT FACILITIES AND/OR FOR REUSE OFFSITE.
6. AREA WILL BE LEVELLED, FENCED OFF AND MADE SAFE ON COMPLETION OF DEMOLITION WORKS.
7. FINAL INSPECTION WILL BE CONDUCTED TO CLOSE OUT ANY DEFECTS.

LEGEND

	EXTENT OF WORKS
	STRUCTURE TO BE DEMOLISHED
	SEDIMENT FENCE
	VEGETATION CLEARING ZONE



XREFS: XR-89914020-CI-23-SURVEY; XR-89914020-CI-23-02-SOUTH CREEK BRIDGE; 18022 East West Connector Aerial; XR-89914020-CI-VARIOUS SITE BOUNDARY; CAD File: N:\Parametric\Projects\89914020_CENTRAL_PRECINCT_ADI\ST MARYS\Drawings\01_Mastplanning\Sketches\89914020-SK741(1).dwg

Rev.	Date	Description	Des.	Verif.	Appd.
3	19.02.18	RE-ISSUED FOR DEVELOPMENT APPLICATION	HL		ARM
2	16.02.18	ISSUED FOR DEVELOPMENT APPLICATION	HL		ARM
1	14.02.18	ISSUED FOR CLIENT REVIEW	HL		ARM

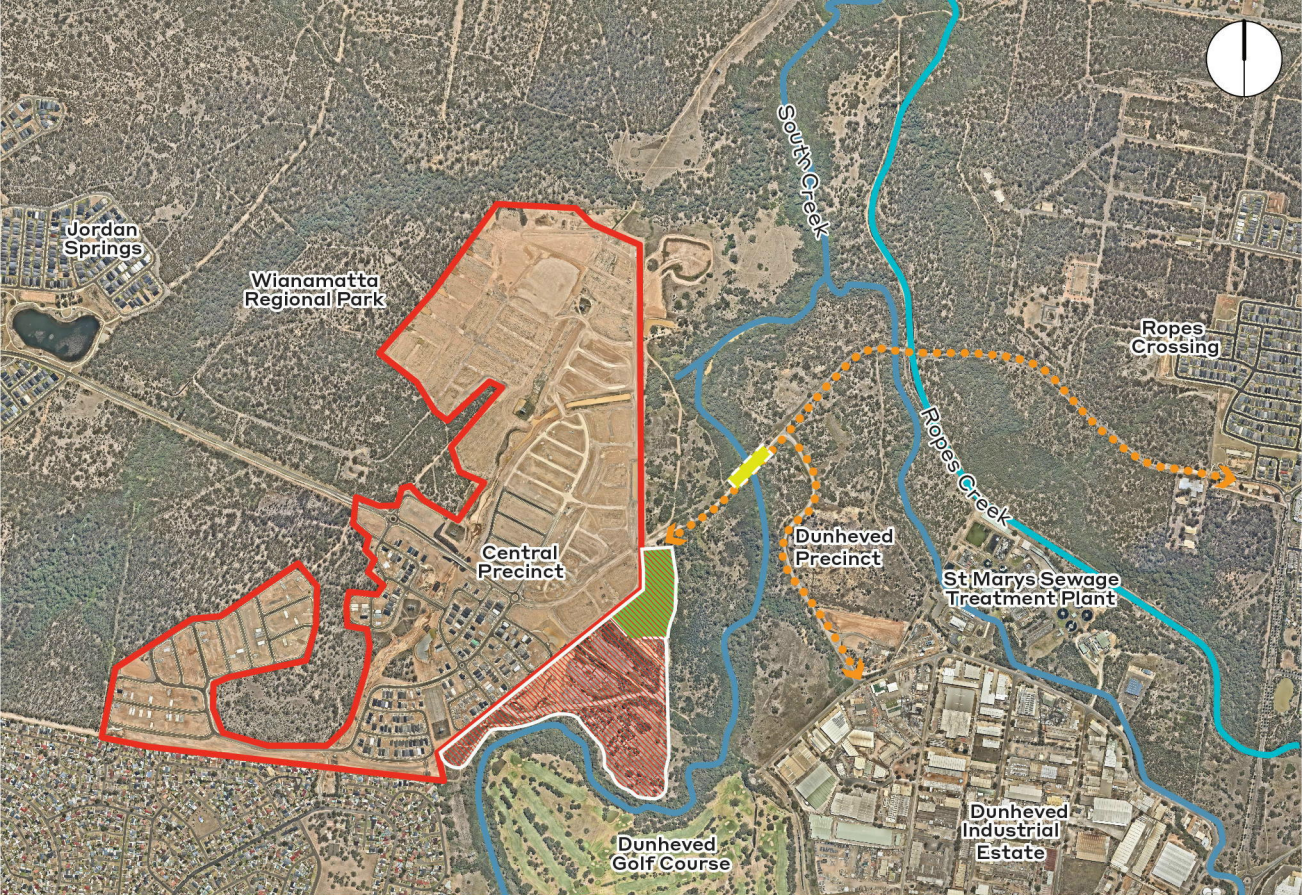
© Cardno Limited All Rights Reserved.
This document is produced by Cardno Limited solely for the benefit of and use by the client in accordance with the terms of the retainer. Cardno Limited does not and shall not assume any responsibility or liability whatsoever to any third party arising out of any use or reliance by third party on the content of this document.

Cardno (NSW/ACT) Pty Ltd | ABN 95 001 145 035
Level 9, The Forum, 203 Pacific Highway
St Leonards, NSW 2065
Tel: 02 9496 7700 Fax: 02 9439 5170
Web: www.cardno.com.au

Drawn	Date	Client
HL	14.02.18	LENLELEASE
Checked	Date	Project
ARM	14.02.18	JORDAN SPRINGS EAST
Designed	Date	DEMOLITION OF BUILDINGS
		DEVELOPMENT APPLICATION
Verified	Date	Title
		DEMOLITION, CLEARING, EROSION AND SEDIMENT
Approved		CONTROL PLAN

Datum	Scale	Size
A.H.D.	1:500	A1
Drawing Number	Revision	
89914020-SK741	3	

Status: **FOR APPROVAL**
NOT TO BE USED FOR CONSTRUCTION PURPOSES



- | | | | |
|--|-----------------------|--|--------------------------|
|  | South Creek Bridge |  | Regional Open Space |
|  | South Creek Buildings |  | East West Connector Road |