

8/29/2019 4:36:18 PM C:\Projects\DP\REV\087634 - JSE\_Village\_CommunityActivation\087634-ARC-AS-MOD-2019\A1 Local Engr.dwg Q:\A1\01 © Copyright AECOM PTY LTD 2009

# COMMUNITY ACTIVATION SHELTER

## JORDAN SPRINGS EAST

### ARCHITECTURAL SERVICES DRAWINGS LIST

DRAWING NO.	DRAWING NAME	REV.
AR-001	COVER PAGE	02
AR-002	SITEPLAN	02
AR-100	FLOOR PLAN	02
AR-105	ROOF PLAN	02
AR-110	STAGE PLAN	02
AR-201	ELEVATIONS_SHEET 01	02
AR-202	ELEVATIONS_SHEET 02	02
AR-301	SECTIONS_SHEET 01	02
AR-302	SECTIONS_SHEET 02	02
AR-303	SECTIONS_SHEET 03	02
AR-501	AMENITIES DETAIL	02
AR-703	SKETCH DETAILS	02
AR-900	3D VIEW	02
AR-901	3D VIEW	02
AR-902	3D VIEW	02
AR-903	3D VIEW	02
TOTAL: 16		

### MATERIAL, FINISHES, FIXTURES & EQUIPMENT SCHEDULE

KEY	DESCRIPTION
BA01	70x35 ALUMINIUM BATTENS, ANODISED FINISH
BK01	POLISHED CONCRETE BLOCK STACK BOND. SEALED / ANTI GRAFFITTI FINISH
DP01	FORMED GALV STEEL DOWN PIPES
EE01	COMMS CABINET
EE02	SWITCHBOARD
FL01	HONED CONCRETE FLOOR, NON SLIP CLEAR SEALER FINISH
H01	PWD TOILET PAN & BACKREST AS 1428.1 COMPLIANT
H02	PWD BASIN WALL MOUNTED AS 1428.1 COMPLIANT
H03	PWD BASIN TAPWARE AS 1428.1 COMPLIANT
H04	STAINLESS STEEL WALL FIXED GRABRAIL AND BACKREST, 1428.1 COMPLIANT
H07	CLEANERS SINK
H08	BASIN WALL MOUNTED (TAPWARE INCLUDED)
H09	TOILET PAN (AMBULANT HEIGHT)
H10	TOILET ROLL HOLDER
H11	BABY CHANGE TABLE, WALL MOUNTED RECESSED FOLD-DOWN CHANGE TABLE
H12	5000L RAINWATER TANK & PUMP SET
H14	AMBULANT GRABRAIL
H16	PWD MIRROR
H18	HAND DRYER
KC01	MICROWAVE OVEN
KC02	BARBEQUE COOKTOP
KC04	REFRIGERATOR
KC05	KITCHEN SINK
KC06	KITCHEN TAP
RF01	MEMBRANE ROOF SHEETING - MAKMAX CHUKOH FGT800, 45YR WARRANTY (SUPPLIER: OR EQUAL)
RF02	75mm INSULATED PANEL BONDOR OR EQUAL - MATT FINISH
RF03	FORMED GALV STEEL GUTTER
RF04	FOLDED METAL FLASHING, COLOUR TO MATCH ROOF PANEL
SE01	IN SITU CONCRETE SEATING
SE02	IN SITU CONCRETE SEATING WITH HARDWOOD TIMBER SLATS ON TOP-COVERED SEATING/ SUNKEN LOUNGE SEATING AREA
ST01	GLT CURVED BEAM - TO ENGINEERS DETAILS. EXTERNAL GRADE. BOLTED CONNECTIONS
ST02	GLT RAFTER, BOLTED CONNECTIONS
ST03	STEEL COLUMN (65SHS), EPOXY PAINT FINISH WITH ANTI GRAFFITI AND COLOUR RETENTION COATING, COLOUR TO MATCH "WOODLAND GREY"
ST04	CURVED HOT DIPPED GALVANIZED STEEL BEAM, EPOXY PAINT FINISH WITH ANTI GRAFFITI AND COLOUR RETENTION COATING, COLOUR TO MATCH "WOODLAND GREY"



PERSPECTIVE (ELEMENTS OF LANDSCAPE DESIGN INDICATIVE ONLY)



LOCALITY PLAN

KEYPLAN

CONSULTANTS

NOTES:

BASED ON HIGHLY VARIABLE GROUNDWATER AND SUB GRADE CONDITIONS THE LANDSCAPE CONTRACTOR IS TO ASSES AND CONFIRM ANY REQUIREMENT FOR SUBSOIL DRAINAGE TO TREE PLANTING PITS AND PLANTING AREAS PRIOR TO PLACEMENT OF TOPSOIL AND PLANTING. SHOULD DRAINAGE BE ASSESSED AS POOR OR INADE QUATE LANDSCAPE CONTRACTOR TO ADVISE PROJECT SUPERINTENDENT FOR INSTRUCTION TO INSTALL SUB SURFACE DRAINAGE.

SAFETY IN DESIGN REPORT:

SAFETY IN DESIGN ISSUES HAVE BEEN ASSESSED AS PART OF THE DESIGN PROCESS. ALL REASONABLE STEPS HAVE BEEN TAKEN TO ENSURE HAZARDS AND RISKS NORMALLY ASSOCIATED WITH THIS TYPE OF DESIGN HAVE BEEN MITIGATED AND/OR COMMUNICATED. THERE ARE NO UNUSUAL HAZARDS / RISKS THAT WOULD NOT NORMALLY BE ASSOCIATED WITH THIS TYPE OF DESIGN AS DETAILED.

NOTES

THIS DRAWING SHOULD BE READ IN CONJUNCTION WITH AECOM PTY LTD PREPARED SPECIFICATIONS AND DETAILS. SHOULD A CONFLICT EXIST, ADVICE AND DIRECTION SHOULD BE SOUGHT FROM AECOM PTY LTD PRIOR TO UNDERTAKING ANY CONSTRUCTION WORKS. ALL LEVELS SHOWN ARE IN METRES AUSTRALIAN HEIGHT DATUM, AND DIMENSIONS IN MILLIMETRES UNLESS OTHERWISE NOTED.

ALL INFORMATION RELATING TO CIVIL, STRUCTURAL, SERVICES AND OTHER WORKS AS REPRESENTED ON THIS DRAWING AS PREPARED BY AECOM PTY LTD IS FOR AECOM REFERENCE AND COORDINATION PURPOSES ONLY. ALL DOCUMENTATION TO THESE AND OTHER WORKS OUTSIDE THE SCOPE DEFINED FOR AECOM PTY LTD SHOULD BE REFERRED TO THE RELEVANT CONSULTANT'S DRAWINGS AND SPECIFICATION FOR DETAILS.

THIS DRAWING IS CONFIDENTIAL AND SHALL ONLY BE USED FOR THE PURPOSES OF THIS PROJECT.

AMENDMENTS

ISSUE	DATE	AMENDMENT	APPROVED
01	19.03.19	DRAFT FOR PRE-DA REVIEW	JB
02	16.08.19	DA ISSUE	JB

PROJECT

COMMUNITY ACTIVATION SHELTER

PROJECT NUMBER

60487634

CLIENT

DRAWING TITLE

ARCHITECTURAL COVER PAGE

LEVEL 21, 420 GEORGE STREET  
SYDNEY NSW 2000 AUSTRALIA  
© Copyright AECOM AUSTRALIA PTY LTD 2009  
SCALE

T 61 2 8943 0000  
F 61 2 8943 0001  
www.aecom.com.au  
DRAWN

DRAWING NUMBER

60487634-SN-NC-AR-001

ISSUE

02

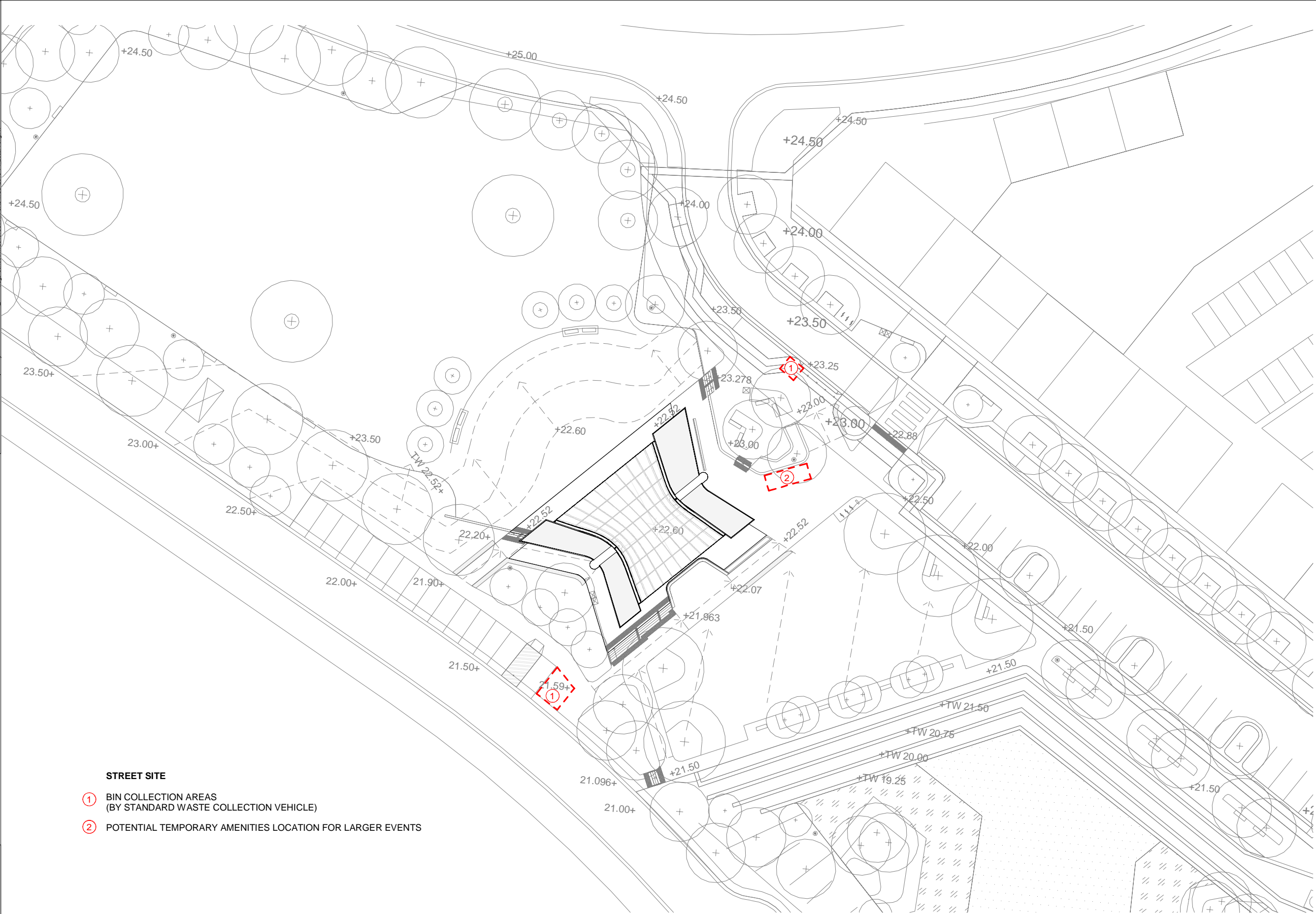
PRELIMINARY



8/09/2019 4:36:20 PM C:\Projects\DP\6487634 - SE Village Centre\6487634-AR-CAS-MOD-2018\A1 Local Final.dwg

QAV10.1

© Copyright AECOM PTY LTD 2009



STREET SITE

- ① BIN COLLECTION AREAS  
(BY STANDARD WASTE COLLECTION VEHICLE)
- ② POTENTIAL TEMPORARY AMENITIES LOCATION FOR LARGER EVENTS

1 SITE PLAN  
Scale 1 : 250 @ A1, 1:500 @ A3

KEYPLAN

CONSULTANTS

NOTES:  
BASED ON HIGHLY VARIABLE GROUNDWATER AND SUB GRADE CONDITIONS THE LANDSCAPE CONTRACTOR IS TO ASSES AND CONFIRM ANY REQUIREMENT FOR SUBSOIL DRAINAGE TO TREE PLANTING PITS AND PLANTING AREAS PRIOR TO PLACEMENT OF TOPSOIL AND PLANTING.  
SHOULD DRAINAGE BE ASSESSED AS POOR OR INADEQUATE LANDSCAPE CONTRACTOR TO ADVISE PROJECT SUPERINTENDENT FOR INSTRUCTION TO INSTALL SUB SURFACE DRAINAGE.

SAFETY IN DESIGN REPORT:  
SAFETY IN DESIGN ISSUES HAVE BEEN ASSESSED AS PART OF THE DESIGN PROCESS. ALL REASONABLE STEPS HAVE BEEN TAKEN TO ENSURE HAZARDS AND RISKS NORMALLY ASSOCIATED WITH THIS TYPE OF DESIGN HAVE BEEN MITIGATED AND/OR COMMUNICATED.  
THERE ARE NO UNUSUAL HAZARDS / RISKS THAT WOULD NOT NORMALLY BE ASSOCIATED WITH THIS TYPE OF DESIGN AS DETAILED.

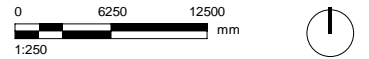
NOTES

THIS DRAWING SHOULD BE READ IN CONJUNCTION WITH AECOM PTY LTD PREPARED SPECIFICATIONS AND DETAILS. SHOULD A CONFLICT EXIST, ADVICE AND DIRECTION SHOULD BE SOUGHT FROM AECOM PTY LTD PRIOR TO UNDERTAKING ANY CONSTRUCTION WORKS. ALL LEVELS SHOWN ARE IN METRES AUSTRALIAN HEIGHT DATUM, AND DIMENSIONS IN MILLIMETRES UNLESS OTHERWISE NOTED.

ALL INFORMATION RELATING TO CIVIL, STRUCTURAL, SERVICES AND OTHER WORKS AS REPRESENTED ON THIS DRAWING AS PREPARED BY AECOM PTY LTD IS FOR AECOM REFERENCE AND COORDINATION PURPOSES ONLY. ALL DOCUMENTATION TO THESE AND OTHER WORKS OUTSIDE THE SCOPE DEFINED FOR AECOM PTY LTD SHOULD BE REFERRED TO THE RELEVANT CONSULTANTS' DRAWINGS AND SPECIFICATION FOR DETAILS.

THIS DRAWING IS CONFIDENTIAL AND SHALL ONLY BE USED FOR THE PURPOSES OF THIS PROJECT.

AMENDMENTS	ISSUE	DATE	AMENDMENT	APPROVED
01	19.03.19	DRAFT FOR PRE-DA REVIEW		JB
02	16.08.19	DA ISSUE		JB



PROJECT  
COMMUNITY ACTIVATION SHELTER

PROJECT NUMBER 60487634  
CLIENT



DRAWING TITLE  
ARCHITECTURAL  
SITEPLAN

AECOM

LEVEL 21, 420 GEORGE STREET  
SYDNEY NSW 2000 AUSTRALIA  
© Copyright AECOM AUSTRALIA PTY LTD 2009

T 61 2 8943 0000  
F 61 2 8943 0001  
www.aecom.com.au

SCALE  
1 : 250 @ A1

DRAWING NUMBER  
60487634-SN-NC-AR-002

ISSUE  
02

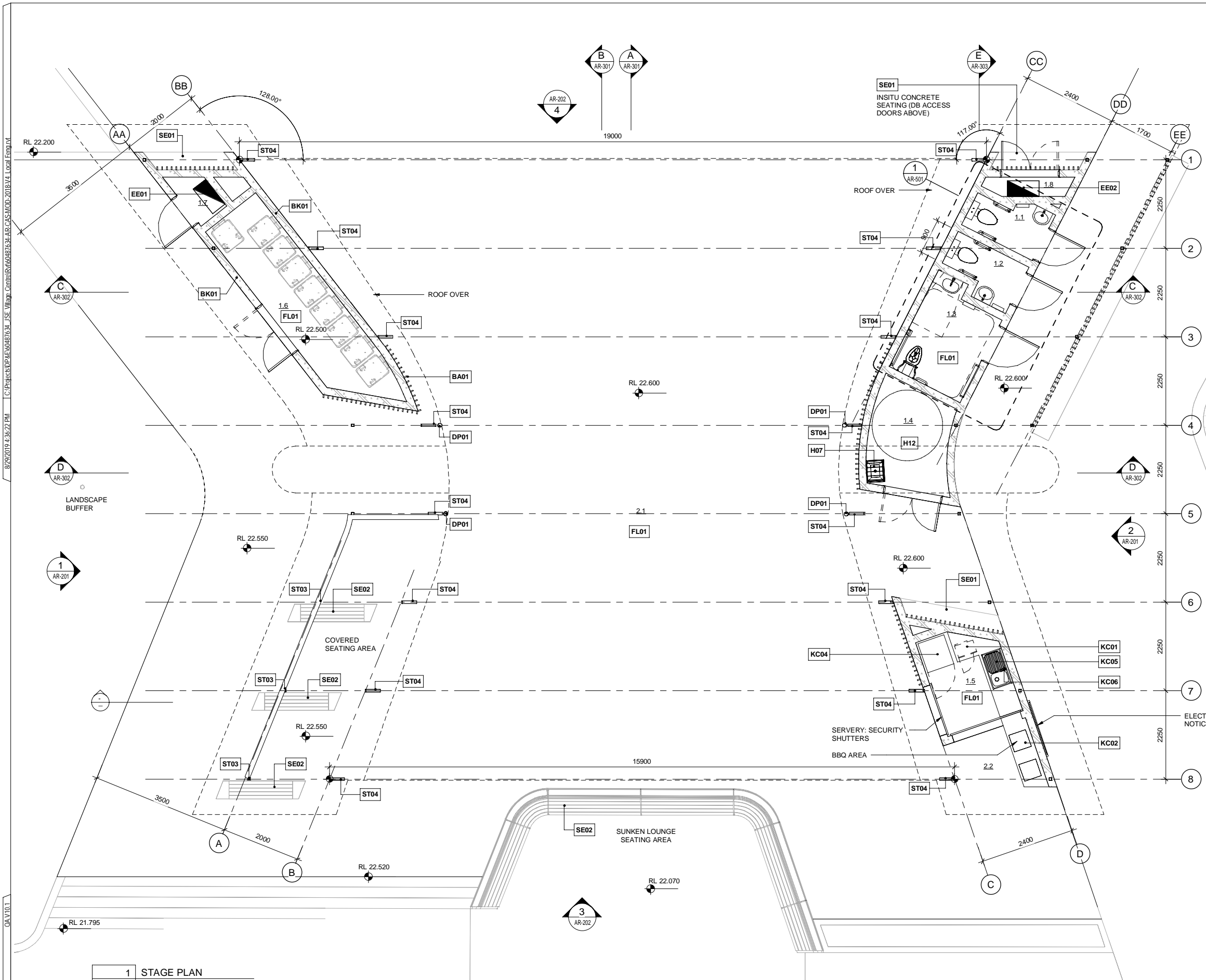
PRELIMINARY

MUST NOT BE REMOVED FROM DRW

MUST NOT BE REMOVED FROM DRW

MUST NOT BE REMOVED FROM DRW

8/9/2019 4:36:22 PM C:\Projects\DP\REV\067634 - SE Village - Civil\REV\067634-AR-CAS\MOD-2019\A1 Local Eng.dwg  
© Copyright AECOM PTY LTD 2009



#### KEYNOTE LEGEND

KEY	DESCRIPTION
BA01	70x35 ALUMINIUM BATTENS, ANODISED FINISH
BK01	POLISHED CONCRETE BLOCK STACK BOND. SEALED / ANTI GRAFFITI FINISH
DP01	FORMED GALV STEEL DOWN PIPES
EE01	COMMS CABINET
EE02	SWITCHBOARD
FL01	HONED CONCRETE FLOOR, NON SLIP CLEAR SEALER FINISH
H07	CLEANERS SINK
H12	5000L RAINWATER TANK & PUMP SET
KC01	MICROWAVE OVEN
KC02	BARBEQUE COOKTOP
KC04	REFRIGERATOR
KC05	KITCHEN SINK
KC06	KITCHEN TAP
SE01	IN SITU CONCRETE SEATING
SE02	IN SITU CONCRETE SEATING WITH HARDWOOD TIMBER SLATS ON TOP-COVERED SEATING/ SUNKEN LOUNGE SEATING AREA
ST03	STEEL COLUMN (65SHS), EPOXY PAINT FINISH WITH ANTI GRAFFITI AND COLOUR RETENTION COATINGS, COLOUR TO MATCH "WOODLAND GREY"
ST04	CURVED HOT DIPPED GALVANIZED STEEL BEAM, EPOXY PAINT FINISH WITH ANTI GRAFFITI AND COLOUR RETENTION COATING, COLOUR TO MATCH "WOODLAND GREY"

#### ROOM SCHEDULE

NO.	ROOM NAME	AREAS
INDOOR		
1.1	AMBULANT UNISEX TOILET	2.2 m <sup>2</sup>
1.2	UNISEX TOILET	2.2 m <sup>2</sup>
1.3	DDA TOILET	5.1 m <sup>2</sup>
1.4	WATER TANK & CLEANERS ROOM	5.3 m <sup>2</sup>
1.5	KITCHEN	4.8 m <sup>2</sup>
1.6	COMMUNITY STORE	9.4 m <sup>2</sup>
1.7	DB WEST	1.0 m <sup>2</sup>
1.8	DB EAST	1.0 m <sup>2</sup>
		31.1 m <sup>2</sup>
OUTDOOR		
2.1	STAGE	214.8 m <sup>2</sup>
2.2	BBQ	3.4 m <sup>2</sup>
		218.2 m <sup>2</sup>
GRAND TOTAL: 10		249.3 m <sup>2</sup>

#### KEYPLAN

CONSULTANTS

NOTES:  
BASED ON HIGHLY VARIABLE GROUNDWATER AND SUB GRADE CONDITIONS THE LANDSCAPE CONTRACTOR IS TO ASSES AND CONFIRM ANY REQUIREMENT FOR SUBSOIL DRAINAGE TO TREE PLANTING PITS AND PLANTING AREAS PRIOR TO PLACEMENT OF TOPSOIL AND PLANTING.  
SHOULD DRAINAGE BE ASSESSED AS POOR OR INADEQUATE LANDSCAPE CONTRACTOR TO ADVISE PROJECT SUPERINTENDENT FOR INSTRUCTION TO INSTALL SUB SURFACE DRAINAGE.

SAFETY IN DESIGN REPORT:  
SAFETY IN DESIGN ISSUES HAVE BEEN ASSESSED AS PART OF THE DESIGN PROCESS. ALL REASONABLE STEPS HAVE BEEN TAKEN TO ENSURE HAZARDS AND RISKS NORMALLY ASSOCIATED WITH THIS TYPE OF DESIGN HAVE BEEN MITIGATED AND/OR COMMUNICATED.  
THERE ARE NO UNUSUAL HAZARDS / RISKS THAT WOULD NOT NORMALLY BE ASSOCIATED WITH THIS TYPE OF DESIGN AS DETAILED.

#### NOTES

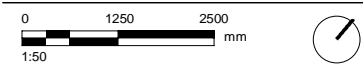
THIS DRAWING SHOULD BE READ IN CONJUNCTION WITH AECOM PTY LTD PREPARED SPECIFICATIONS AND DETAILS. SHOULD A CONFLICT EXIST, ADVICE AND DIRECTION SHOULD BE SOUGHT FROM AECOM PTY LTD PRIOR TO UNDERTAKING ANY CONSTRUCTION WORKS. ALL LEVELS SHOWN ARE IN METRES AUSTRALIAN HEIGHT DATUM, AND DIMENSIONS IN MILLIMETRES UNLESS OTHERWISE NOTED.

ALL INFORMATION RELATING TO CIVIL, STRUCTURAL, SERVICES AND OTHER WORKS AS REPRESENTED ON THIS DRAWING AS PREPARED BY AECOM PTY LTD IS FOR AECOM REFERENCE AND COORDINATION PURPOSES ONLY. ALL DOCUMENTATION TO THESE AND OTHER WORKS OUTSIDE THE SCOPE DEFINED FOR AECOM PTY LTD SHOULD BE REFERRED TO THE RELEVANT CONSULTANT'S DRAWINGS AND SPECIFICATION FOR DETAILS.

THIS DRAWING IS CONFIDENTIAL AND SHALL ONLY BE USED FOR THE PURPOSES OF THIS PROJECT.

#### AMENDMENTS

ISSUE	DATE	AMENDMENT	APPROVED
01	19.03.19	DRAFT FOR PRE-DA REVIEW	JB
02	16.08.19	DA ISSUE	JB



#### PROJECT

COMMUNITY ACTIVATION SHELTER

PROJECT NUMBER 60487634  
CLIENT



#### DRAWING TITLE

ARCHITECTURAL  
FLOOR PLAN

**AECOM**

LEVEL 21, 420 GEORGE STREET  
SYDNEY NSW 2000 AUSTRALIA  
© Copyright AECOM AUSTRALIA PTY LTD 2009

T 61 2 8943 0000  
F 61 2 8943 0001  
www.aecom.com.au

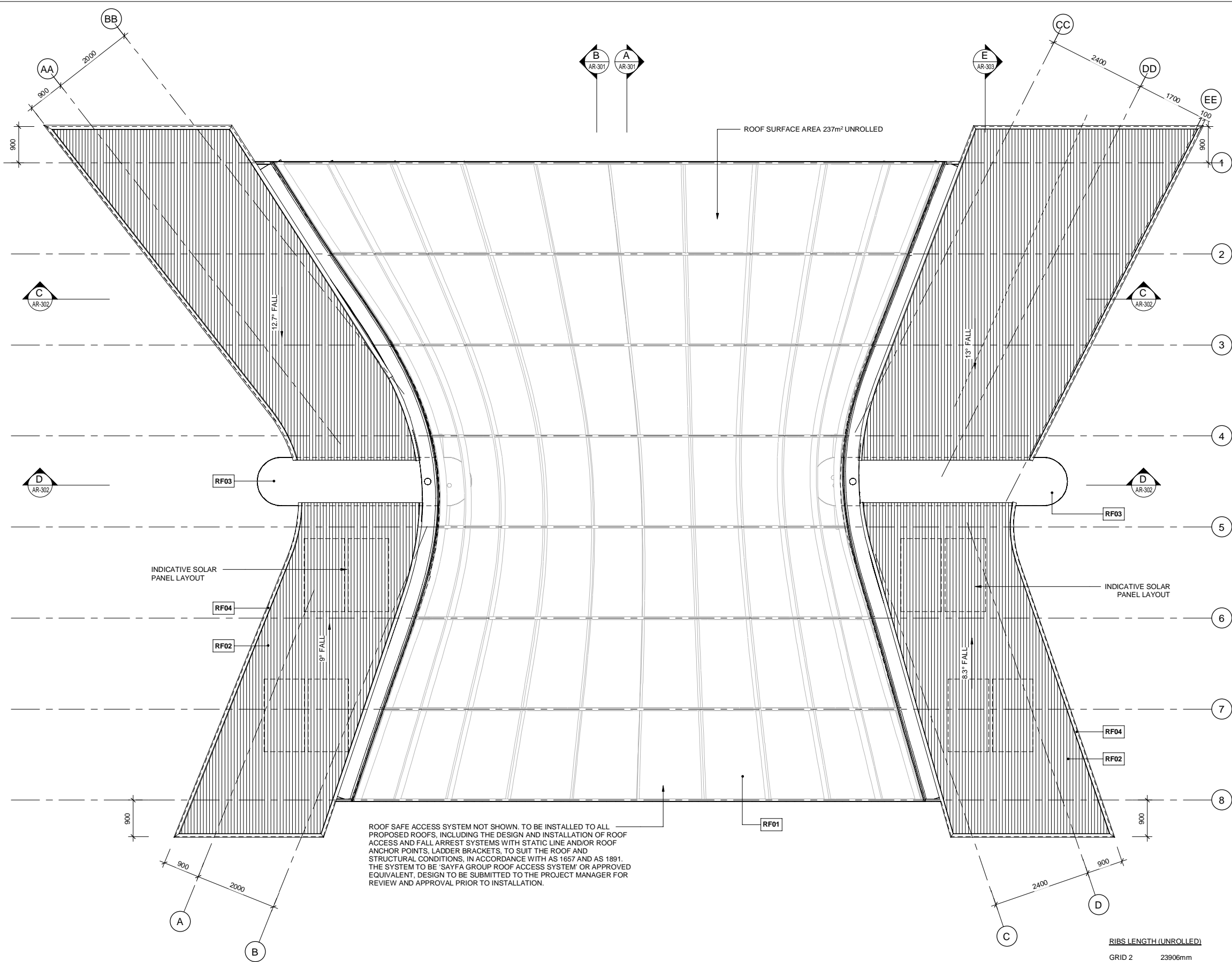
SCALE 1:50 @ A1  
DRAWING NUMBER 60487634-SN-NC-AR-100  
ISSUE 02

PRELIMINARY

C:\Projects\DP\REV0487634 - SE Village - Civil\Rev\487634\ARC\AS\MOD-2018\A1 Local Final.dwg 8/29/2019 4:36:23 PM C:\Projects\DP\REV0487634 - SE Village - Civil\Rev\487634\ARC\AS\MOD-2018\A1 Local Final.dwg

QAV10.1

© Copyright AECOM PTY LTD 2009



1 ROOF PLAN  
Scale 1 : 50 @ A1, 1:100 @ A3

RIBS LENGTH (UNROLLED)	
GRID 2	23906mm
GRID 3	21782mm
GRID 4	19708mm
GRID 5	18178mm
GRID 6	18408mm
GRID 7	20729mm
GRID 8	23938mm
GRID 9	27260mm
TOTAL	173909mm (174m)

BRACE LENGTH (UNROLLED)	
BRACE 1	16713mm
BRACE 2	16494mm
BRACE 3	16286mm
BRACE 4	16169mm
BRACE 5	16130mm
BRACE 6	16167mm
BRACE 7	16279mm
BRACE 8	16468mm
BRACE 9	16737mm
BRACE 10	17085mm
BRACE 11	17447mm
TOTAL	181965mm (182m)

KEYNOTE LEGEND

KEY	DESCRIPTION
RF01	MEMBRANE ROOF SHEETING - MAKMAX CHUKOH FGT800, 45YR WARRANTY (SUPPLIER: OR EQUAL)
RF02	75mm INSULATED PANEL BONDOR OR EQUAL - MATT FINISH
RF03	FORMED GALV STEEL GUTTER
RF04	FOLDED METAL FLASHING, COLOUR TO MATCH ROOF PANEL

KEYPLAN

CONSULTANTS

NOTES:  
BASED ON HIGHLY VARIABLE GROUNDWATER AND SUB GRADE CONDITIONS THE LANDSCAPE CONTRACTOR IS TO ASSES AND CONFIRM ANY REQUIREMENT FOR SUBSOIL DRAINAGE TO TREE PLANTING PITS AND PLANTING AREAS PRIOR TO PLACEMENT OF TOPSOIL AND PLANTING.  
SHOULD DRAINAGE BE ASSESSED AS POOR OR INADEQUATE LANDSCAPE CONTRACTOR TO ADVISE PROJECT SUPERINTENDENT FOR INSTRUCTION TO INSTALL SUB SURFACE DRAINAGE.  
  
SAFETY IN DESIGN REPORT:  
SAFETY IN DESIGN ISSUES HAVE BEEN ASSESSED AS PART OF THE DESIGN PROCESS. ALL REASONABLE STEPS HAVE BEEN TAKEN TO ENSURE HAZARDS AND RISKS NORMALLY ASSOCIATED WITH THIS TYPE OF DESIGN HAVE BEEN MITIGATED AND/OR COMMUNICATED.  
THERE ARE NO UNUSUAL HAZARDS / RISKS THAT WOULD NOT NORMALLY BE ASSOCIATED WITH THIS TYPE OF DESIGN AS DETAILED.

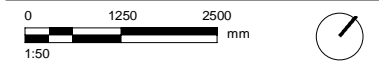
NOTES

THIS DRAWING SHOULD BE READ IN CONJUNCTION WITH AECOM PTY LTD PREPARED SPECIFICATIONS AND DETAILS. SHOULD A CONFLICT EXIST, ADVICE AND DIRECTION SHOULD BE SOUGHT FROM AECOM PTY LTD PRIOR TO UNDERTAKING ANY CONSTRUCTION WORKS. ALL LEVELS SHOWN ARE IN METRES AUSTRALIAN HEIGHT DATUM, AND DIMENSIONS IN MILLIMETRES UNLESS OTHERWISE NOTED.

ALL INFORMATION RELATING TO CIVIL, STRUCTURAL, SERVICES AND OTHER WORKS AS REPRESENTED ON THIS DRAWING AS PREPARED BY AECOM PTY LTD IS FOR AECOM REFERENCE AND COORDINATION PURPOSES ONLY. ALL DOCUMENTATION TO THESE AND OTHER WORKS OUTSIDE THE SCOPE DEFINED FOR AECOM PTY LTD SHOULD BE REFERRED TO THE RELEVANT CONSULTANT'S DRAWINGS AND SPECIFICATION FOR DETAILS.

THIS DRAWING IS CONFIDENTIAL AND SHALL ONLY BE USED FOR THE PURPOSES OF THIS PROJECT.

AMENDMENTS	ISSUE	DATE	AMENDMENT	APPROVED
01	19.03.19	DRAFT FOR PRE-DA REVIEW		JB
02	16.08.19	DA ISSUE		JB



PROJECT

COMMUNITY ACTIVATION SHELTER

PROJECT NUMBER 60487634  
CLIENT



DRAWING TITLE

ARCHITECTURAL  
ROOF PLAN

**AECOM**

LEVEL 21, 420 GEORGE STREET  
SYDNEY NSW 2000 AUSTRALIA  
© Copyright AECOM AUSTRALIA PTY LTD 2009  
SCALE  
1 : 50 @ A1  
DRAWING NUMBER  
60487634-SN-NC-AR-105  
T 61 2 8943 0000  
F 61 2 8943 0001  
www.aecom.com.au  
DRAWN  
ISSUE  
02

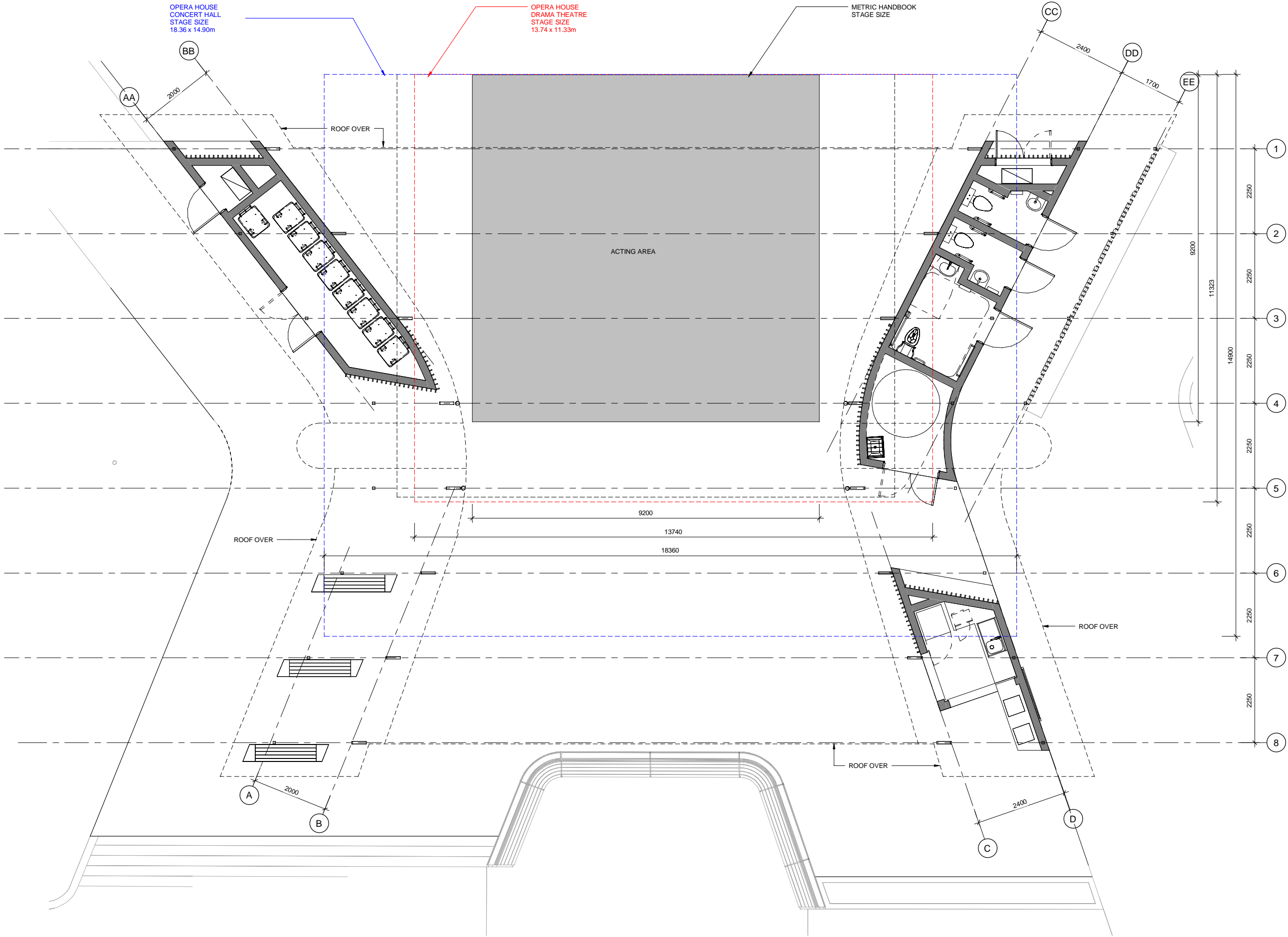
PRELIMINARY



C:\Projects\DP\REV06\7634 - SE Village - Civil\Rev\60487634\AR\AS\MOD-2018\A1 Local Eng.dwg  
8/9/2019 4:36:28 PM

QA V10.1

© Copyright AECOM PTY LTD 2009



KEYPLAN

CONSULTANTS

NOTES:

BASED ON HIGHLY VARIABLE GROUNDWATER AND SUB GRADE CONDITIONS THE LANDSCAPE CONTRACTOR IS TO ASSES AND CONFIRM ANY REQUIREMENT FOR SUBSOIL DRAINAGE TO TREE PLANTING PITS AND PLANTING AREAS PRIOR TO PLACEMENT OF TOPSOIL AND PLANTING.

SHOULD DRAINAGE BE ASSESSED AS POOR OR INADEQUATE LANDSCAPE CONTRACTOR TO ADVISE PROJECT SUPERINTENDENT FOR INSTRUCTION TO INSTALL SUB SURFACE DRAINAGE.

SAFETY IN DESIGN REPORT:

SAFETY IN DESIGN ISSUES HAVE BEEN ASSESSED AS PART OF THE DESIGN PROCESS. ALL REASONABLE STEPS HAVE BEEN TAKEN TO ENSURE HAZARDS AND RISKS NORMALLY ASSOCIATED WITH THIS TYPE OF DESIGN HAVE BEEN MITIGATED AND/OR COMMUNICATED.

THERE ARE NO UNUSUAL HAZARDS / RISKS THAT WOULD NOT NORMALLY BE ASSOCIATED WITH THIS TYPE OF DESIGN AS DETAILED.

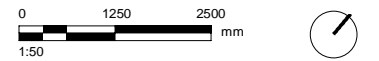
NOTES

THIS DRAWING SHOULD BE READ IN CONJUNCTION WITH AECOM PTY LTD PREPARED SPECIFICATIONS AND DETAILS. SHOULD A CONFLICT EXIST, ADVICE AND DIRECTION SHOULD BE SOUGHT FROM AECOM PTY LTD PRIOR TO UNDERTAKING ANY CONSTRUCTION WORKS. ALL LEVELS SHOWN ARE IN METRES AUSTRALIAN HEIGHT DATUM, AND DIMENSIONS IN MILLIMETRES UNLESS OTHERWISE NOTED.

ALL INFORMATION RELATING TO CIVIL, STRUCTURAL, SERVICES AND OTHER WORKS AS REPRESENTED ON THIS DRAWING AS PREPARED BY AECOM PTY LTD IS FOR AECOM REFERENCE AND COORDINATION PURPOSES ONLY. ALL DOCUMENTATION TO THESE AND OTHER WORKS OUTSIDE THE SCOPE DEFINED FOR AECOM PTY LTD SHOULD BE REFERRED TO THE RELEVANT CONSULTANT'S DRAWINGS AND SPECIFICATION FOR DETAILS.

THIS DRAWING IS CONFIDENTIAL AND SHALL ONLY BE USED FOR THE PURPOSES OF THIS PROJECT.

AMENDMENTS	ISSUE	DATE	AMENDMENT	APPROVED
01	19.03.19	DRAFT FOR PRE-DA REVIEW		JB
02	16.08.19	DA ISSUE		JB



PROJECT

COMMUNITY ACTIVATION SHELTER

PROJECT NUMBER 60487634

CLIENT



DRAWING TITLE

ARCHITECTURAL STAGE PLAN

AECOM

LEVEL 21, 420 GEORGE STREET  
SYDNEY NSW 2000 AUSTRALIA  
© Copyright AECOM AUSTRALIA PTY LTD 2009

T 61 2 8943 0000  
F 61 2 8943 0001  
www.aecom.com

SCALE  
1 : 50 @ A1

DRAWING NUMBER  
60487634-SN-NC-AR-110

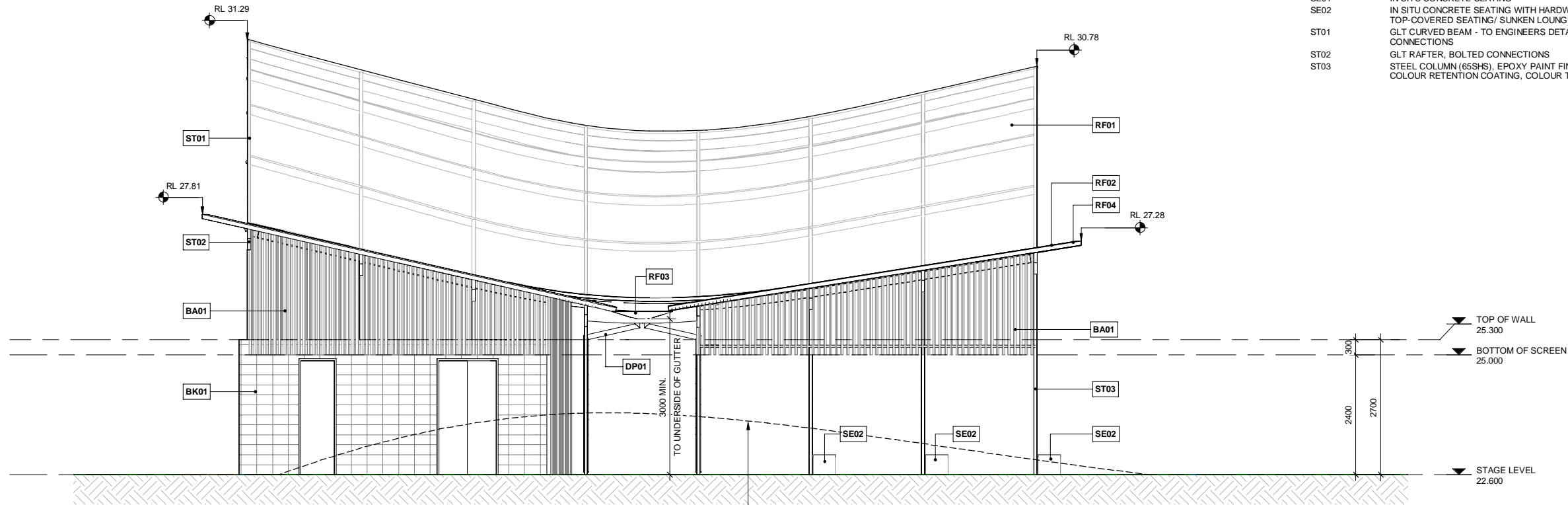
ISSUE  
02

PRELIMINARY

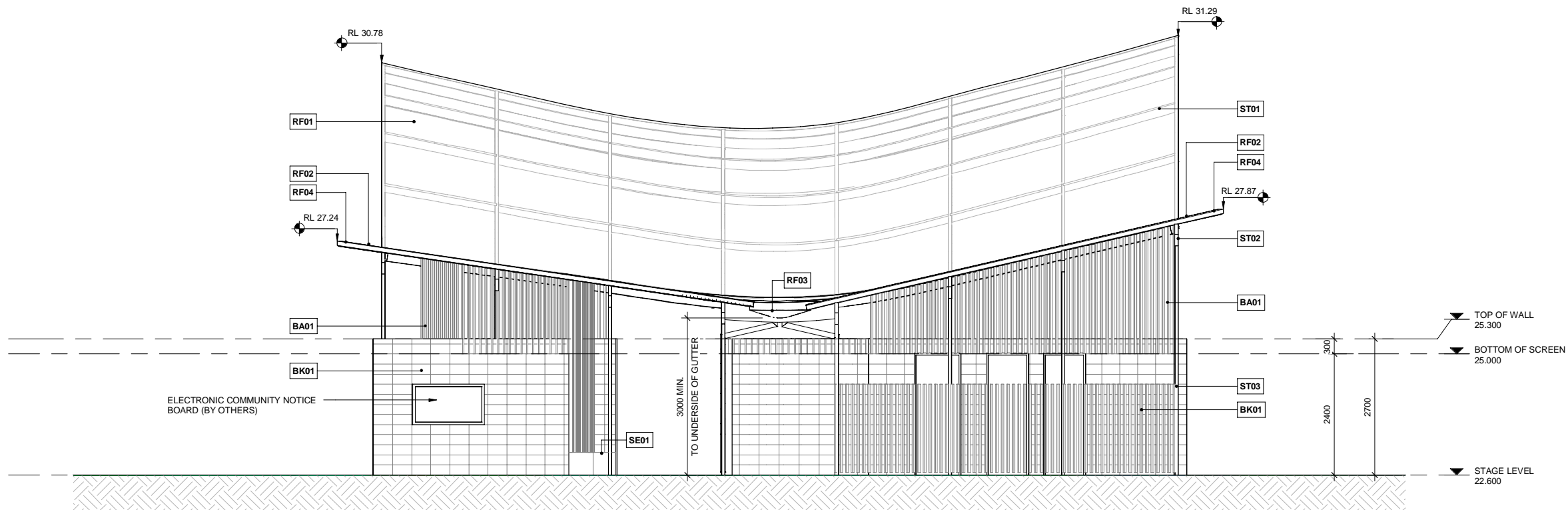
C:\Projects\DP\REV\067634 - SE Village - Civil\Rev\067634-AR-CAS-MOD-2018\A1 Local Eng.dwg  
8/29/2019 4:36:30 PM

QAV10.1

© Copyright AECOM PTY LTD 2009



1 ELEVATION  
Scale 1 : 50 @ A1, 1:100 @ A3



2 ELEVATION  
Scale 1 : 50 @ A1, 1:100 @ A3

#### KEYNOTE LEGEND

KEY	DESCRIPTION
BA01	70x35 ALUMINUM BATTENS, ANODISED FINISH
BK01	POLISHED CONCRETE BLOCK STACK BOND. SEALED / ANTI GRAFFITTI FINISH
DP01	FORMED GALV STEEL DOWN PIPES
RF01	MEMBRANE ROOF SHEETING - MAKMAX CHUKOH FGT800, 45YR WARRANTY (SUPPLIER: OR EQUAL)
RF02	75mm INSULATED PANEL BONDOR OR EQUAL - MATT FINISH
RF03	FORMED GALV STEEL GUTTER
RF04	FOLDED METAL FLASHING, COLOUR TO MATCH ROOF PANEL
SE01	IN SITU CONCRETE SEATING
SE02	IN SITU CONCRETE SEATING WITH HARDWOOD TIMBER SLATS ON TOP-COVERED SEATING/ SUNKEN LOUNGE SEATING AREA
ST01	GLT CURVED BEAM - TO ENGINEERS DETAILS. EXTERNAL GRADE. BOLTED CONNECTIONS
ST02	GLT RAFTER, BOLTED CONNECTIONS
ST03	STEEL COLUMN (65SHS), EPOXY PAINT FINISH WITH ANTI GRAFFITTI AND COLOUR RETENTION COATING, COLOUR TO MATCH "WOODLAND GREY"

#### KEYPLAN

CONSULTANTS

NOTES:  
BASED ON HIGHLY VARIABLE GROUNDWATER AND SUB GRADE CONDITIONS THE LANDSCAPE CONTRACTOR IS TO ASSES AND CONFIRM ANY REQUIREMENT FOR SUBSOIL DRAINAGE TO TREE PLANTING PITS AND PLANTING AREAS PRIOR TO PLACEMENT OF TOPSOIL AND PLANTING.  
SHOULD DRAINAGE BE ASSESSED AS POOR OR INADEQUATE LANDSCAPE CONTRACTOR TO ADVISE PROJECT SUPERINTENDENT FOR INSTRUCTION TO INSTALL SUB SURFACE DRAINAGE.

SAFETY IN DESIGN REPORT:  
SAFETY IN DESIGN ISSUES HAVE BEEN ASSESSED AS PART OF THE DESIGN PROCESS. ALL REASONABLE STEPS HAVE BEEN TAKEN TO ENSURE HAZARDS AND RISKS NORMALLY ASSOCIATED WITH THIS TYPE OF DESIGN HAVE BEEN MITIGATED AND/OR COMMUNICATED.  
THERE ARE NO UNUSUAL HAZARDS / RISKS THAT WOULD NOT NORMALLY BE ASSOCIATED WITH THIS TYPE OF DESIGN AS DETAILED.

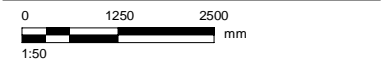
#### NOTES

THIS DRAWING SHOULD BE READ IN CONJUNCTION WITH AECOM PTY LTD PREPARED SPECIFICATIONS AND DETAILS. SHOULD A CONFLICT EXIST, ADVICE AND DIRECTION SHOULD BE SOUGHT FROM AECOM PTY LTD PRIOR TO UNDERTAKING ANY CONSTRUCTION WORKS. ALL LEVELS SHOWN ARE IN METRES AUSTRALIAN HEIGHT DATUM, AND DIMENSIONS IN MILLIMETRES UNLESS OTHERWISE NOTED.

ALL INFORMATION RELATING TO CIVIL, STRUCTURAL, SERVICES AND OTHER WORKS AS REPRESENTED ON THIS DRAWING AS PREPARED BY AECOM PTY LTD IS FOR AECOM REFERENCE AND COORDINATION PURPOSES ONLY. ALL DOCUMENTATION TO THESE AND OTHER WORKS OUTSIDE THE SCOPE DEFINED FOR AECOM PTY LTD SHOULD BE REFERRED TO THE RELEVANT CONSULTANTS' DRAWINGS AND SPECIFICATION FOR DETAILS.

THIS DRAWING IS CONFIDENTIAL AND SHALL ONLY BE USED FOR THE PURPOSES OF THIS PROJECT.

AMENDMENTS	ISSUE	DATE	AMENDMENT	APPROVED
01	19.03.19	DRAFT FOR PRE-DA REVIEW		JB
02	16.08.19	DA ISSUE		JB



PROJECT  
COMMUNITY ACTIVATION SHELTER

PROJECT NUMBER 60487634  
CLIENT



DRAWING TITLE

ARCHITECTURAL  
ELEVATIONS\_SHEET 01

**AECOM**

LEVEL 21, 420 GEORGE STREET  
SYDNEY NSW 2000 AUSTRALIA  
© Copyright AECOM AUSTRALIA PTY LTD 2009

SCALE 1 : 50 @ A1  
DRAWING NUMBER 60487634-SN-NC-AR-201

ISSUE 02

PRELIMINARY

MUST NOT BE REMOVED FROM DRW

MUST NOT BE REMOVED FROM DRW

MUST NOT BE REMOVED FROM DRW



C:\Projects\DP\REV\067634 - SE Village - Civil\Rev\067634\ARC\AS\MOD-2018\A1 Local Eng.dwg  
8/9/2019 4:36:34 PM

QAV10.1

© Copyright AECOM PTY LTD 2009

KEYNOTE LEGEND

KEY	DESCRIPTION
BA01	70x35 ALUMINUM BATTENS, ANODISED FINISH
BK01	POLISHED CONCRETE BLOCK STACK BOND. SEALED / ANTI GRAFFITI FINISH
DP01	FORMED GALV STEEL DOWN PIPES
KC02	BARBEQUE COOKTOP
RF01	MEMBRANE ROOF SHEETING - MAKMAX CHUKOH FGT800, 45YR WARRANTY (SUPPLIER: OR EQUAL)
RF02	75mm INSULATED PANEL BONDOR OR EQUAL - MATT FINISH
RF03	FORMED GALV STEEL GUTTER
RF04	FOLDED METAL FLASHING, COLOUR TO MATCH ROOF PANEL
SE01	IN SITU CONCRETE SEATING
SE02	IN SITU CONCRETE SEATING WITH HARDWOOD TIMBER SLATS ON TOP-COVERED SEATING/ SUNKEN LOUNGE SEATING AREA
ST01	GLT CURVED BEAM - TO ENGINEERS DETAILS. EXTERNAL GRADE. BOLTED CONNECTIONS
ST02	GLT RAFTER, BOLTED CONNECTIONS
ST03	STEEL COLUMN (65SHS), EPOXY PAINT FINISH WITH ANTI GRAFFITI AND COLOUR RETENTION COATING, COLOUR TO MATCH "WOODLAND GREY"
ST04	CURVED HOT DIPPED GALVANIZED STEEL BEAM, EPOXY PAINT FINISH WITH ANTI GRAFFITI AND COLOUR RETENTION COATING, COLOUR TO MATCH "WOODLAND GREY"

KEYPLAN

CONSULTANTS

NOTES:  
BASED ON HIGHLY VARIABLE GROUNDWATER AND SUB GRADE CONDITIONS THE LANDSCAPE CONTRACTOR IS TO ASSES AND CONFIRM ANY REQUIREMENT FOR SUBSOIL DRAINAGE TO TREE PLANTING PITS AND PLANTING AREAS PRIOR TO PLACEMENT OF TOPSOIL AND PLANTING.  
SHOULD DRAINAGE BE ASSESSED AS POOR OR INADEQUATE LANDSCAPE CONTRACTOR TO ADVISE PROJECT SUPERINTENDENT FOR INSTRUCTION TO INSTALL SUB SURFACE DRAINAGE

SAFETY IN DESIGN REPORT:  
SAFETY IN DESIGN ISSUES HAVE BEEN ASSESSED AS PART OF THE DESIGN PROCESS. ALL REASONABLE STEPS HAVE BEEN TAKEN TO ENSURE HAZARDS AND RISKS NORMALLY ASSOCIATED WITH THIS TYPE OF DESIGN HAVE BEEN MITIGATED AND/OR COMMUNICATED.  
THERE ARE NO UNUSUAL HAZARDS / RISKS THAT WOULD NOT NORMALLY BE ASSOCIATED WITH THIS TYPE OF DESIGN AS DETAILED.

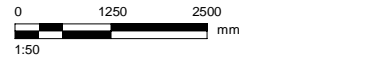
NOTES

THIS DRAWING SHOULD BE READ IN CONJUNCTION WITH AECOM PTY LTD PREPARED SPECIFICATIONS AND DETAILS. SHOULD A CONFLICT EXIST, ADVICE AND DIRECTION SHOULD BE SOUGHT FROM AECOM PTY LTD PRIOR TO UNDERTAKING ANY CONSTRUCTION WORKS. ALL LEVELS SHOWN ARE IN METRES AUSTRALIAN HEIGHT DATUM, AND DIMENSIONS IN MILLIMETRES UNLESS OTHERWISE NOTED.

ALL INFORMATION RELATING TO CIVIL, STRUCTURAL SERVICES AND OTHER WORKS AS REPRESENTED ON THIS DRAWING AS PREPARED BY AECOM PTY LTD IS FOR AECOM REFERENCE AND COORDINATION PURPOSES ONLY. ALL DOCUMENTATION TO THESE AND OTHER WORKS OUTSIDE THE SCOPE DEFINED FOR AECOM PTY LTD SHOULD BE REFERRED TO THE RELEVANT CONSULTANTS' DRAWINGS AND SPECIFICATION FOR DETAILS.

THIS DRAWING IS CONFIDENTIAL AND SHALL ONLY BE USED FOR THE PURPOSES OF THIS PROJECT.

AMENDMENTS	ISSUE	DATE	AMENDMENT	APPROVED
01	19.03.19	DRAFT FOR PRE-DA REVIEW		JB
02	16.08.19	DA ISSUE		JB



PROJECT  
COMMUNITY ACTIVATION SHELTER

PROJECT NUMBER  
CLIENT

60487634



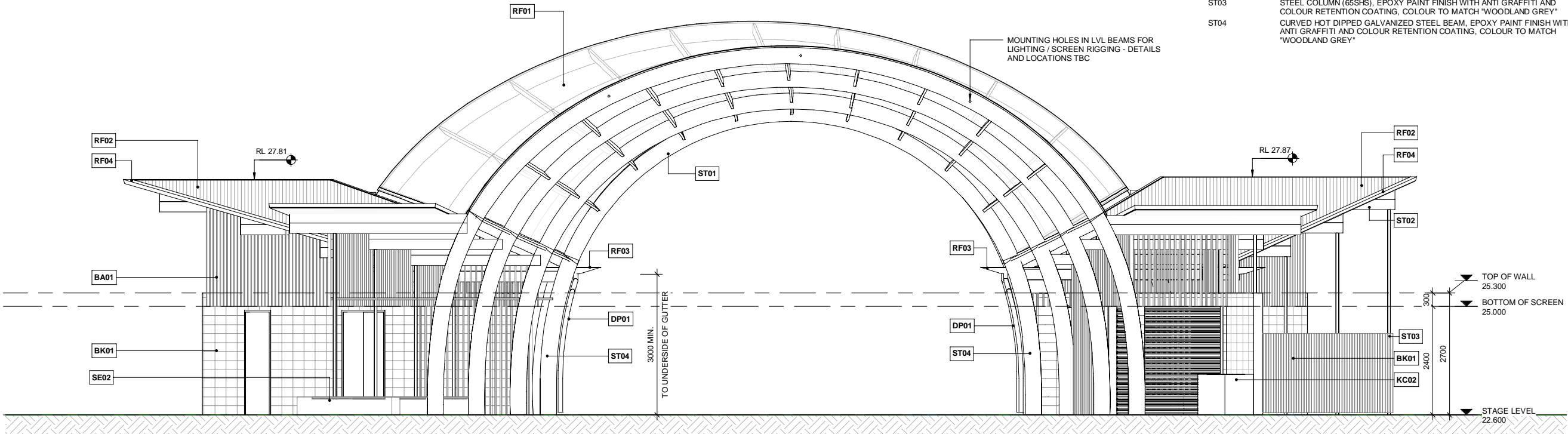
DRAWING TITLE  
ARCHITECTURAL  
ELEVATIONS\_SHEET 02

AECOM

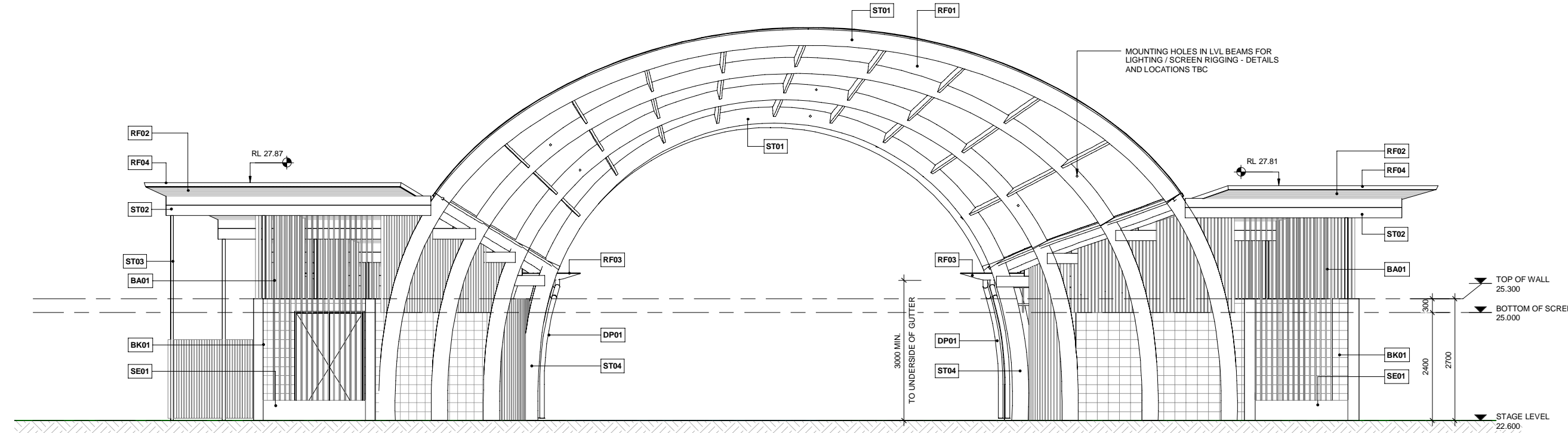
LEVEL 21, 420 GEORGE STREET  
SYDNEY NSW 2000 AUSTRALIA  
© Copyright AECOM AUSTRALIA PTY LTD 2009  
SCALE  
1:50 @ A1  
DRAWING NUMBER  
60487634-SN-NC-AR-202

T 61 2 8943 0000  
F 61 2 8943 0001  
www.aecom.com.au  
DRAWN  
ISSUE  
02

PRELIMINARY



3 SOUTH ELEVATION  
Scale 1:50 @ A1, 1:100 @ A3

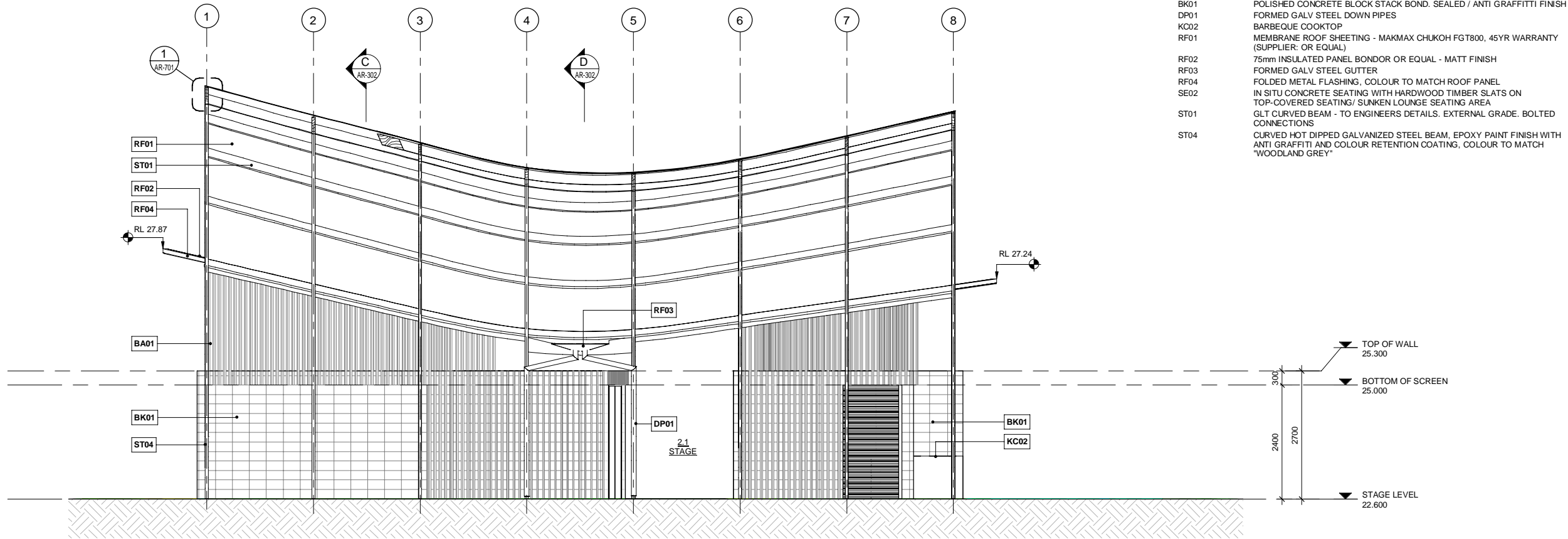


4 NORTH ELEVATION  
Scale 1:50 @ A1, 1:100 @ A3

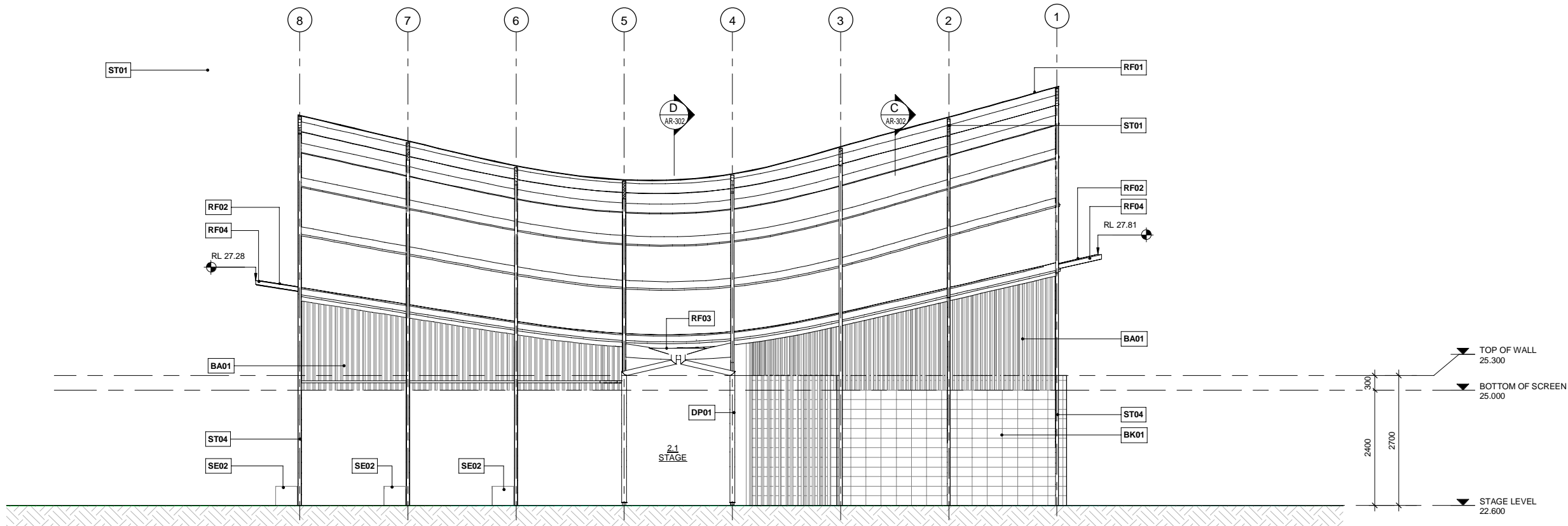
C:\Projects\DP\REV\067634 - SE Village - Civil\Rev\067634-AR-AS-MOD-2019\A1 Local Eng.dwg  
8/9/2019 4:36:37 PM

QAV10.1

© Copyright AECOM PTY LTD 2009



**A SECTION A**  
Scale 1: 50 @ A1, 1:100 @ A3



**B SECTION B**  
Scale 1: 50 @ A1, 1:100 @ A3

KEYPLAN
CONSULTANTS

NOTES:  
BASED ON HIGHLY VARIABLE GROUNDWATER AND SUB GRADE CONDITIONS THE LANDSCAPE CONTRACTOR IS TO ASSES AND CONFIRM ANY REQUIREMENT FOR SUBSOIL DRAINAGE TO TREE PLANTING PITS AND PLANTING AREAS PRIOR TO PLACEMENT OF TOPSOIL AND PLANTING.  
SHOULD DRAINAGE BE ASSESSED AS POOR OR INADEQUATE LANDSCAPE CONTRACTOR TO ADVISE PROJECT SUPERINTENDENT FOR INSTRUCTION TO INSTALL SUB SURFACE DRAINAGE.

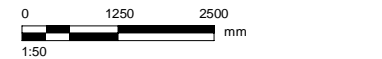
SAFETY IN DESIGN REPORT:  
SAFETY IN DESIGN ISSUES HAVE BEEN ASSESSED AS PART OF THE DESIGN PROCESS. ALL REASONABLE STEPS HAVE BEEN TAKEN TO ENSURE HAZARDS AND RISKS NORMALLY ASSOCIATED WITH THIS TYPE OF DESIGN HAVE BEEN MITIGATED AND/OR COMMUNICATED.  
THERE ARE NO UNUSUAL HAZARDS / RISKS THAT WOULD NOT NORMALLY BE ASSOCIATED WITH THIS TYPE OF DESIGN AS DETAILED.

NOTES  
THIS DRAWING SHOULD BE READ IN CONJUNCTION WITH AECOM PTY LTD PREPARED SPECIFICATIONS AND DETAILS. SHOULD A CONFLICT EXIST, ADVICE AND DIRECTION SHOULD BE SOUGHT FROM AECOM PTY LTD PRIOR TO UNDERTAKING ANY CONSTRUCTION WORKS. ALL LEVELS SHOWN ARE IN METRES AUSTRALIAN HEIGHT DATUM, AND DIMENSIONS IN MILLIMETRES UNLESS OTHERWISE NOTED.

ALL INFORMATION RELATING TO CIVIL, STRUCTURAL, SERVICES AND OTHER WORKS AS REPRESENTED ON THIS DRAWING AS PREPARED BY AECOM PTY LTD IS FOR AECOM REFERENCE AND COORDINATION PURPOSES ONLY. ALL DOCUMENTATION TO THESE AND OTHER WORKS OUTSIDE THE SCOPE DEFINED FOR AECOM PTY LTD SHOULD BE REFERRED TO THE RELEVANT CONSULTANTS' DRAWINGS AND SPECIFICATION FOR DETAILS.

THIS DRAWING IS CONFIDENTIAL AND SHALL ONLY BE USED FOR THE PURPOSES OF THIS PROJECT.

AMENDMENTS	ISSUE	DATE	AMENDMENT	APPROVED
01	19.03.19	DRAFT FOR PRE-DA REVIEW		JB
02	16.08.19	DA ISSUE		JB



PROJECT  
COMMUNITY ACTIVATION SHELTER

PROJECT NUMBER  
CLIENT



DRAWING TITLE  
ARCHITECTURAL SECTIONS\_SHEET 01

**AECOM**

LEVEL 21, 420 GEORGE STREET  
SYDNEY NSW 2000 AUSTRALIA  
© Copyright AECOM AUSTRALIA PTY LTD 2009

SCALE  
1: 50 @ A1

DRAWING NUMBER  
60487634-SN-NC-AR-301

ISSUE  
02

PRELIMINARY





KEYPLAN

NOTES:  
BASED ON HIGHLY VARIABLE GROUNDWATER AND SUB GRADE CONDITIONS THE  
LANDSCAPE CONTRACTOR IS TO ASSES AND CONFIRM ANY REQUIREMENT FOR  
SUBSURFACE DRAINAGE TO TREE PLANTING PITS AND PLANTING AREAS PRIOR TO  
PLACEMENT OF TOPSOIL AND PLANTING.  
SHOULD DRAINAGE BE ASSESSED AS POOR OR INADEQUATE LANDSCAPE  
CONTRACTOR TO ADVISE THE SUPERINTENDENT FOR INSTRUCTION TO  
INSTALL SUB-SURFACE DRAINAGE.

SAFETY IN DESIGN REPORT

SAFETY AND HEALTH ISSUES HAVE BEEN ASSESSED AS PART OF THE DESIGN  
PROCESS. ALL REASONABLE STEPS HAVE BEEN TAKEN TO ENSURE HAZARDS AND  
RISKS NORMALLY ASSOCIATED WITH THIS TYPE OF DESIGN HAVE BEEN MITIGATED  
AND/OR COMMUNICATED.

THERE NO KNOWN HAZARDS / RISKS THAT WOULD NOT NORMALLY BE  
ASSOCIATED WITH THIS TYPE OF DESIGN AS DETAILED.

**NOTES**

THIS DRAWING SHOULD BE READ IN CONJUNCTION WITH AECOM PTY LTD PREPARED SPECIFICATIONS AND DETAILS. SHOULD A CONFLICT EXIST, ADVICE AND DIRECTION SHOULD BE SOUGHT FROM AECOM PTY LTD PRIOR TO UNDERTAKING ANY CONSTRUCTION WORKS. ALL LEVELS SHOWN ARE IN METRES AUSTRALIAN HEIGHT DATUM, AND DIMENSIONS IN MILLIMETRES UNLESS OTHERWISE NOTED.

ALL INFORMATION RELATING TO CIVIL, STRUCTURAL, SERVICES AND OTHER WORKS AS REPRESENTED ON THIS DRAWING AS PREPARED BY AECOM PTY LTD IS FOR AECOM REFERENCE AND COORDINATION PURPOSES ONLY. ALL DOCUMENTATION TO THESE AND OTHER WORKS OUTSIDE THE SCOPE DEFINED FOR AECOM PTY LTD SHOULD BE REFERRED TO THE RELEVANT CONSULTANT'S DRAWINGS AND SPECIFICATION FOR DETAILS.

THIS DRAWING IS CONFIDENTIAL AND SHALL ONLY BE USED FOR THE PURPOSES OF THIS PROJECT.

ARCHITECTURAL  
SECTIONS\_SHEET 02

The AECOM logo is prominently displayed at the top left. To its right, the contact details for the Sydney office are listed: 'LEVEL 21, 420 GEORGE STREET', 'SYDNEY NSW 2000 AUSTRALIA', 'T 61 2 8943 0000', 'F 61 2 8943 0001', and 'www.aecom.com'. Below this, the copyright notice '© Copyright AECOM AUSTRALIA PTY LTD 2009' is shown. The bottom section contains the text 'SCALE 1:50 @ A1', 'DRAWING NUMBER 60487634-SN-NC-AR-302', and 'ISSUE 02'.

PRELIMINARY

C:\Projects\DP\REV\0487634 - SE Village - Client\Rev\0487634-AR-NC-AR-303-2019\A1 Local Eng.dwg 8/29/2019 4:36:42 PM

QAV10.1

© Copyright AECOM PTY LTD 2009

KEYNOTE LEGEND

KEY	DESCRIPTION
BA01	70x35 ALUMINUM BATTENS, ANODISED FINISH
BK01	POLISHED CONCRETE BLOCK STACK BOND. SEALED / ANTI GRAFFITTI FINISH
FL01	HONED CONCRETE FLOOR, NON SLIP CLEAR SEALER FINISH
H08	BASIN WALL MOUNTED (TAPWARE INCLUDED)
H09	TOILET PAN (AMBULANT HEIGHT)
H14	AMBULANT GRABRAIL
KC02	BARBEQUE COOKTOP
KC06	KITCHEN TAP
RF02	75mm INSULATED PANEL BONDOR OR EQUAL - MATT FINISH
RF03	FORMED GALV STEEL GUTTER
RF04	FOLDED METAL FLASHING, COLOUR TO MATCH ROOF PANEL
ST02	GLT RAFTER, BOLTED CONNECTIONS
ST03	STEEL COLUMN (65SHS), EPOXY PAINT FINISH WITH ANTI GRAFFITI AND COLOUR RETENTION COATING, COLOUR TO MATCH "WOODLAND GREY"

KEYPLAN

CONSULTANTS

NOTES:  
BASED ON HIGHLY VARIABLE GROUNDWATER AND SUB GRADE CONDITIONS THE LANDSCAPE CONTRACTOR IS TO ASSES AND CONFIRM ANY REQUIREMENT FOR SUBSOIL DRAINAGE TO TREE PLANTING PITS AND PLANTING AREAS PRIOR TO PLACEMENT OF TOPSOIL AND PLANTING.  
SHOULD DRAINAGE BE ASSESSED AS POOR OR INADEQUATE LANDSCAPE CONTRACTOR TO ADVISE PROJECT SUPERINTENDENT FOR INSTRUCTION TO INSTALL SUB SURFACE DRAINAGE.  
  
SAFETY IN DESIGN REPORT:  
SAFETY IN DESIGN ISSUES HAVE BEEN ASSESSED AS PART OF THE DESIGN PROCESS. ALL REASONABLE STEPS HAVE BEEN TAKEN TO ENSURE HAZARDS AND RISKS NORMALLY ASSOCIATED WITH THIS TYPE OF DESIGN HAVE BEEN MITIGATED AND/OR COMMUNICATED.  
THERE ARE NO UNUSUAL HAZARDS / RISKS THAT WOULD NOT NORMALLY BE ASSOCIATED WITH THIS TYPE OF DESIGN AS DETAILED.

NOTES

THIS DRAWING SHOULD BE READ IN CONJUNCTION WITH AECOM PTY LTD PREPARED SPECIFICATIONS AND DETAILS. SHOULD A CONFLICT EXIST, ADVICE AND DIRECTION SHOULD BE SOUGHT FROM AECOM PTY LTD PRIOR TO UNDERTAKING ANY CONSTRUCTION WORKS. ALL LEVELS SHOWN ARE IN METRES AUSTRALIAN HEIGHT DATUM, AND DIMENSIONS IN MILLIMETRES UNLESS OTHERWISE NOTED.

ALL INFORMATION RELATING TO CIVIL, STRUCTURAL, SERVICES AND OTHER WORKS AS REPRESENTED ON THIS DRAWING AS PREPARED BY AECOM PTY LTD IS FOR AECOM REFERENCE AND COORDINATION PURPOSES ONLY. ALL DOCUMENTATION TO THESE AND OTHER WORKS OUTSIDE THE SCOPE DEFINED FOR AECOM PTY LTD SHOULD BE REFERRED TO THE RELEVANT CONSULTANT'S DRAWINGS AND SPECIFICATION FOR DETAILS.

THIS DRAWING IS CONFIDENTIAL AND SHALL ONLY BE USED FOR THE PURPOSES OF THIS PROJECT.

AMENDMENTS	ISSUE	DATE	AMENDMENT	APPROVED
01	19.03.19	DRAFT FOR PRE-DA REVIEW		JB
02	16.08.19	DA ISSUE		JB



PROJECT  
COMMUNITY ACTIVATION SHELTER

PROJECT NUMBER 60487634  
CLIENT



DRAWING TITLE  
ARCHITECTURAL  
SECTIONS\_SHEET 03

AECOM

LEVEL 21, 420 GEORGE STREET  
SYDNEY NSW 2000 AUSTRALIA  
© Copyright AECOM AUSTRALIA PTY LTD 2009

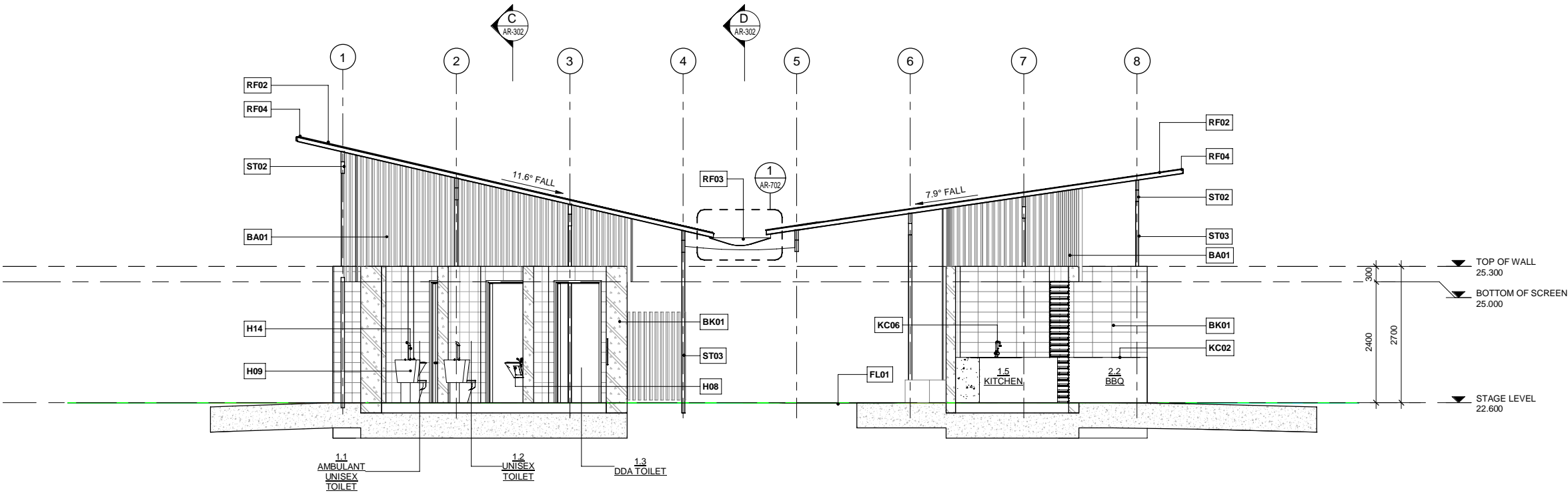
T 61 2 8943 0000  
F 61 2 8943 0001  
www.aecom.com

SCALE 1 : 50 @ A1  
DRAWING NUMBER 60487634-SN-NC-AR-303

ISSUE 02

PRELIMINARY

E SECTION E  
Scale 1 : 50 @ A1, 1 : 100 @ A3



MUST NOT BE REMOVED FROM DRW

MUST NOT BE REMOVED FROM DRW

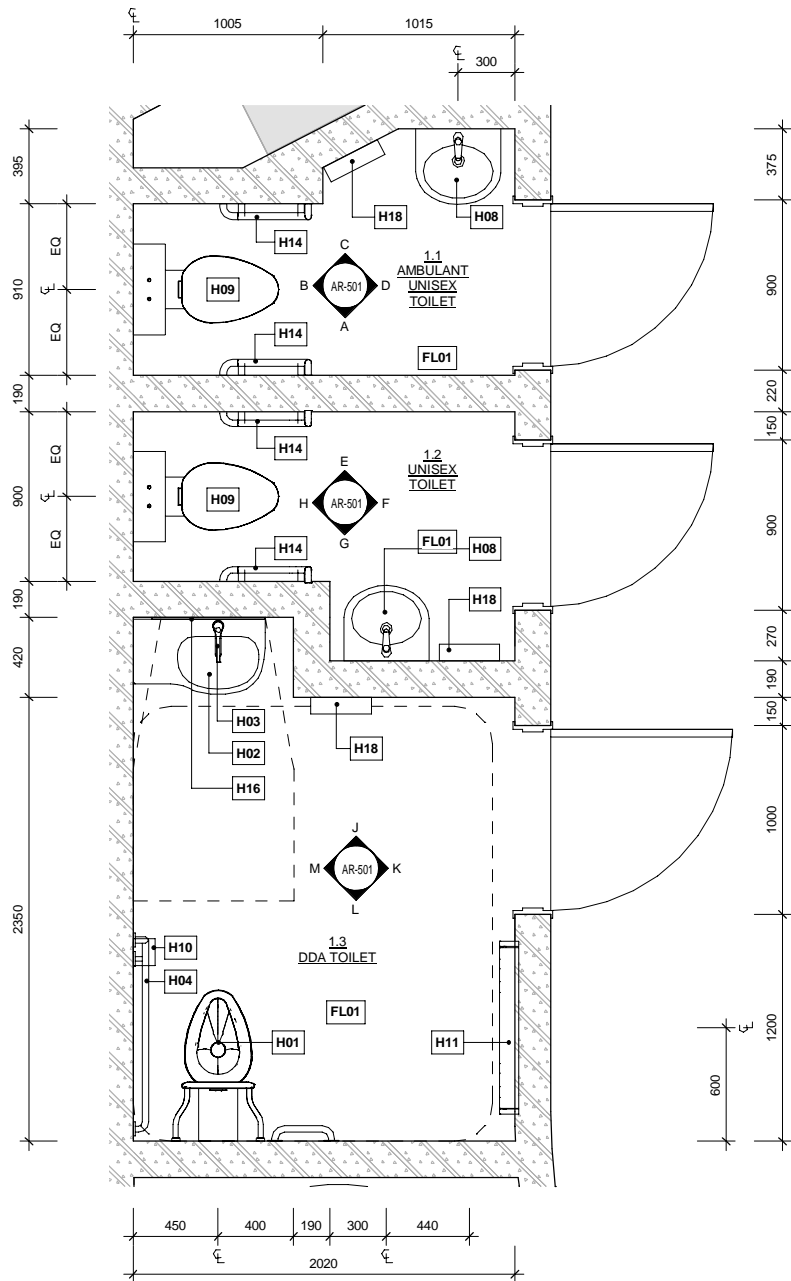
MUST NOT BE REMOVED FROM DRW



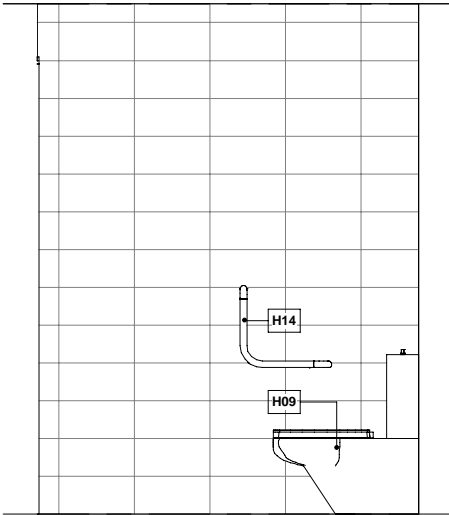
C:\Projects\DP\REV04\67634 - SE Village - Civil\Rev\67634\AR-CAS-MOD-2018\A1 Local Final.dwg

Q&A V10.1

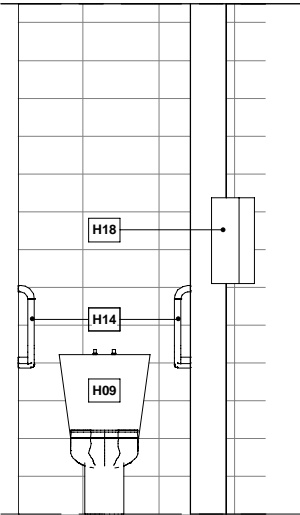
© Copyright AECOM PTY LTD 2009



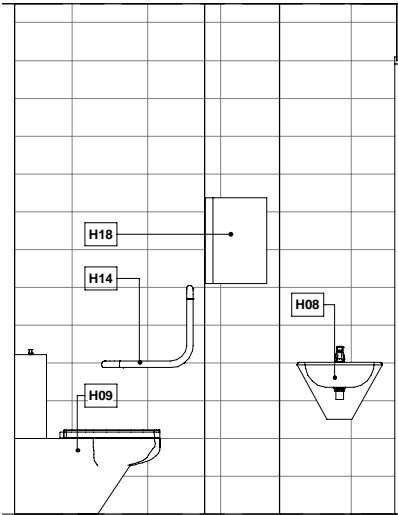
**1 DETAIL AMENITIES PLAN**  
AR-100 Scale 1:20@ A1, 1:40 @ A3



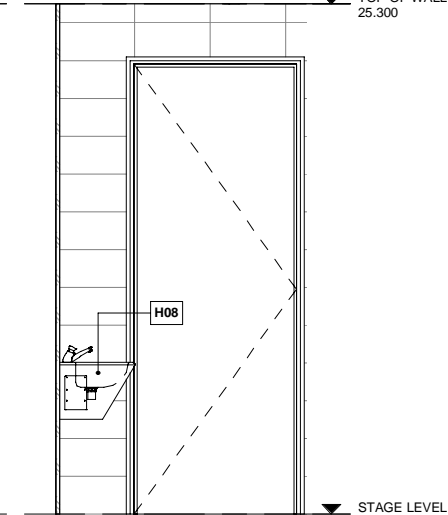
**A INTERIOR ELEVATION A**  
AR-501 Scale 1:20@ A1, 1:40 @ A3



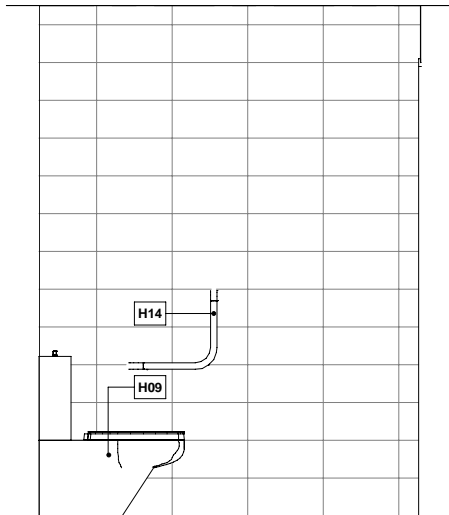
**B INTERIOR ELEVATION B**  
AR-501 Scale 1:20@ A1, 1:40 @ A3



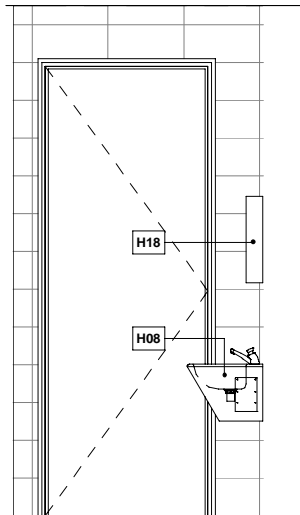
**C INTERIOR ELEVATION C**  
AR-501 Scale 1:20@ A1, 1:40 @ A3



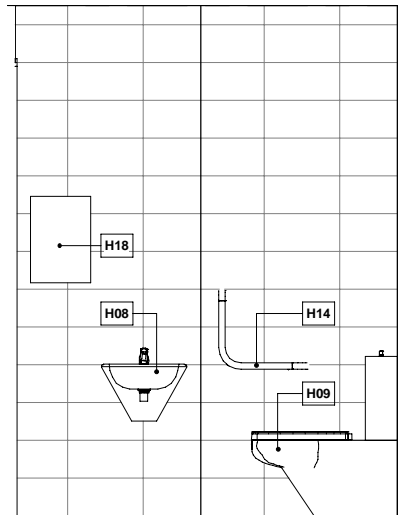
**D INTERIOR ELEVATION D**  
AR-501 Scale 1:20@ A1, 1:40 @ A3



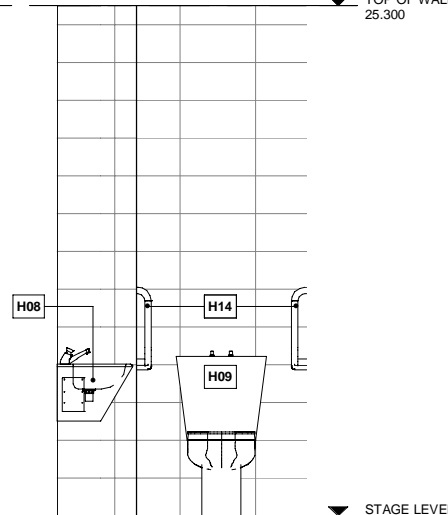
**E INTERIOR ELEVATION E**  
AR-501 Scale 1:20@ A1, 1:40 @ A3



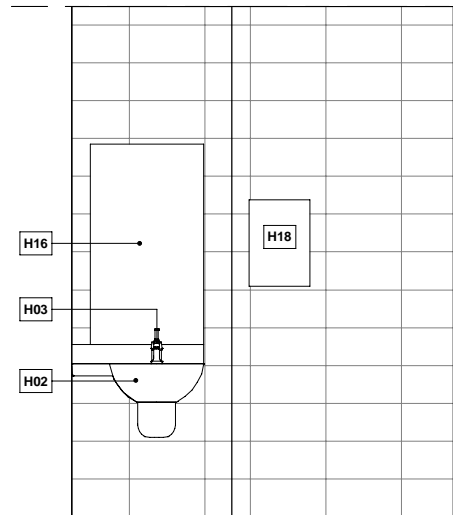
**F INTERIOR ELEVATION F**  
AR-501 Scale 1:20@ A1, 1:40 @ A3



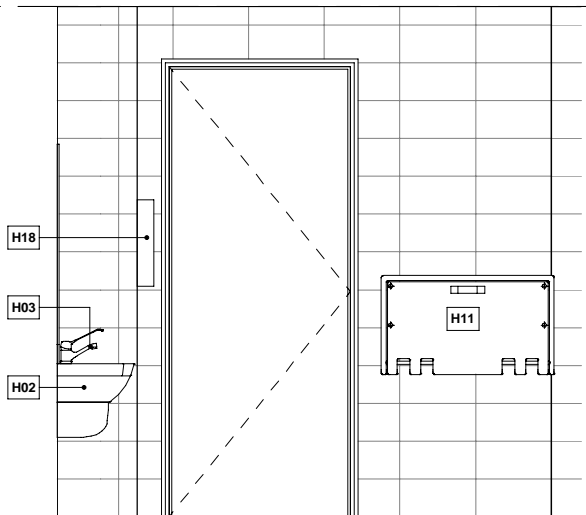
**G INTERIOR ELEVATION G**  
AR-501 Scale 1:20@ A1, 1:40 @ A3



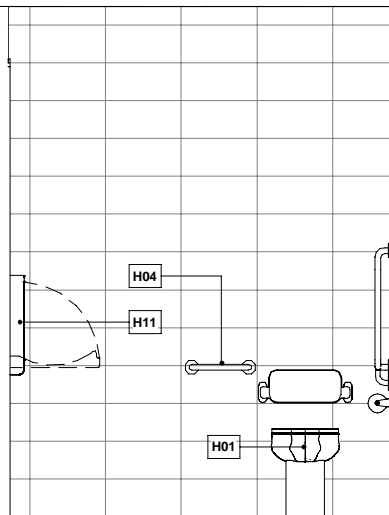
**H INTERIOR ELEVATION H**  
AR-501 Scale 1:20@ A1, 1:40 @ A3



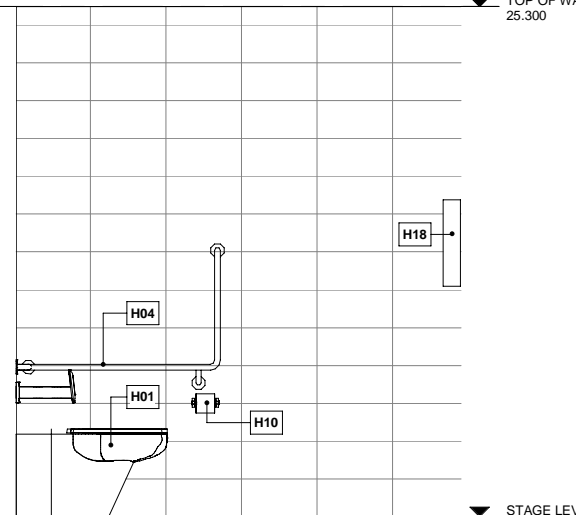
**J INTERIOR ELEVATION J**  
AR-501 Scale 1:20@ A1, 1:40 @ A3



**K INTERIOR ELEVATION K**  
AR-501 Scale 1:20@ A1, 1:40 @ A3



**L INTERIOR ELEVATION L**  
AR-501 Scale 1:20@ A1, 1:40 @ A3



**M INTERIOR ELEVATION M**  
AR-501 Scale 1:20@ A1, 1:40 @ A3

PRELIMINARY

KEYNOTE LEGEND	
KEY	DESCRIPTION
FL01	HONED CONCRETE FLOOR, NON SLIP CLEAR SEALER FINISH
H01	PWD TOILET PAN & BACKREST AS 1428.1 COMPLIANT
H02	PWD BASIN WALL MOUNTED AS 1428.1 COMPLIANT
H03	PWD BASIN TAPWARE AS 1428.1 COMPLIANT
H04	STAINLESS STEEL WALL FIXED GRABRAIL AND BACKREST, 1428.1 COMPLIANT
H08	BASIN WALL MOUNTED (TAPWARE INCLUDED)
H09	TOILET PAN (AMBULANT HEIGHT)
H10	TOILET ROLL HOLDER
H11	BABY CHANGE TABLE, WALL MOUNTED RECESSED FOLD-DOWN CHANGE TABLE
H14	AMBULANT GRABRAIL
H16	PWD MIRROR
H18	HAND DRYER

NOTES:  
BASED ON HIGHLY VARIABLE GROUNDWATER AND SUB GRADE CONDITIONS THE LANDSCAPE CONTRACTOR IS TO ASSES AND CONFIRM ANY REQUIREMENT FOR SUBSOIL DRAINAGE TO TREE PLANTING PITS AND PLANTING AREAS PRIOR TO PLACEMENT OF TOPSOIL AND PLANTING.  
SHOULD DRAINAGE BE ASSESSED AS POOR OR INADEQUATE LANDSCAPE CONTRACTOR TO ADVISE PROJECT SUPERINTENDENT FOR INSTRUCTION TO INSTALL SUB SURFACE DRAINAGE.

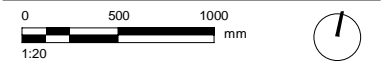
SAFETY IN DESIGN REPORT:  
SAFETY IN DESIGN ISSUES HAVE BEEN ASSESSED AS PART OF THE DESIGN PROCESS. ALL REASONABLE STEPS HAVE BEEN TAKEN TO ENSURE HAZARDS AND RISKS NORMALLY ASSOCIATED WITH THIS TYPE OF DESIGN HAVE BEEN MITIGATED AND/OR COMMUNICATED.  
THERE ARE NO UNUSUAL HAZARDS / RISKS THAT WOULD NOT NORMALLY BE ASSOCIATED WITH THIS TYPE OF DESIGN AS DETAILED.

NOTES  
THIS DRAWING SHOULD BE READ IN CONJUNCTION WITH AECOM PTY LTD PREPARED SPECIFICATIONS AND DETAILS. SHOULD A CONFLICT EXIST, ADVICE AND DIRECTION SHOULD BE SOUGHT FROM AECOM PTY LTD PRIOR TO UNDERTAKING ANY CONSTRUCTION WORKS. ALL LEVELS SHOWN ARE IN METRES AUSTRALIAN HEIGHT DATUM, AND DIMENSIONS IN MILLIMETRES UNLESS OTHERWISE NOTED.

ALL INFORMATION RELATING TO CIVIL, STRUCTURAL, SERVICES AND OTHER WORKS AS REPRESENTED ON THIS DRAWING AS PREPARED BY AECOM PTY LTD IS FOR AECOM REFERENCE AND COORDINATION PURPOSES ONLY. ALL DOCUMENTATION TO THESE AND OTHER WORKS OUTSIDE THE SCOPE DEFINED FOR AECOM PTY LTD SHOULD BE REFERRED TO THE RELEVANT CONSULTANTS' DRAWINGS AND SPECIFICATION FOR DETAILS.

THIS DRAWING IS CONFIDENTIAL AND SHALL ONLY BE USED FOR THE PURPOSES OF THIS PROJECT.

AMENDMENTS	ISSUE	DATE	AMENDMENT	APPROVED
01	19.03.19	DRAFT FOR PRE-DA REVIEW		JB
02	16.08.19	DA ISSUE		JB



PROJECT  
**COMMUNITY ACTIVATION SHELTER**

PROJECT NUMBER  
60487634

CLIENT  
**lendlease**

DRAWING TITLE  
**ARCHITECTURAL AMENITIES DETAIL**

**AECOM**

LEVEL 21, 420 GEORGE STREET  
SYDNEY NSW 2000 AUSTRALIA  
© Copyright AECOM AUSTRALIA PTY LTD 2009

T 61 2 8943 0000  
F 61 2 8943 0001  
www.aecom.com

SCALE  
1:20 @ A1

DRAWING NUMBER  
**60487634-SN-NC-AR-501**

ISSUE  
**02**

MUST NOT BE REMOVED FROM DRW

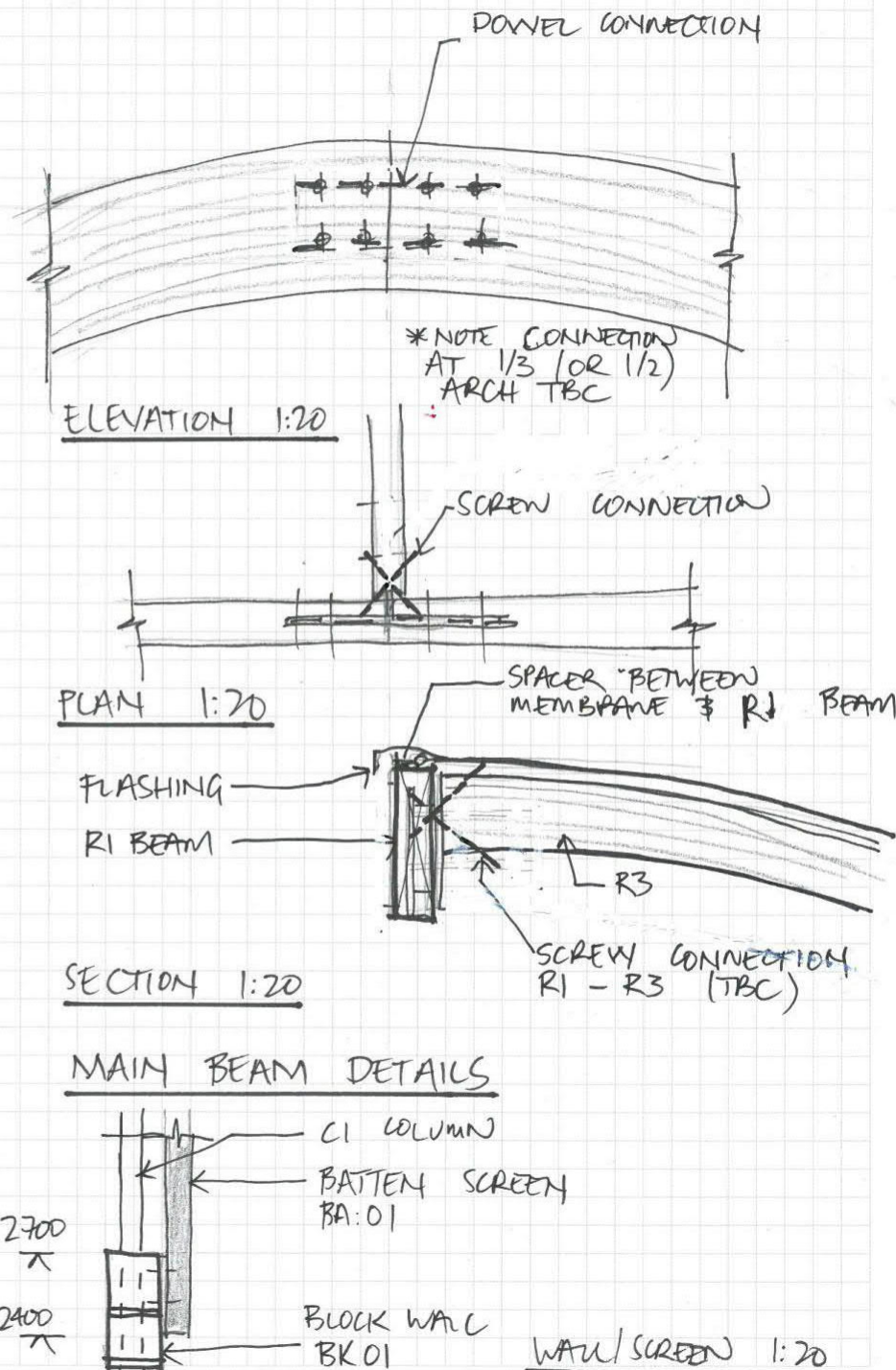
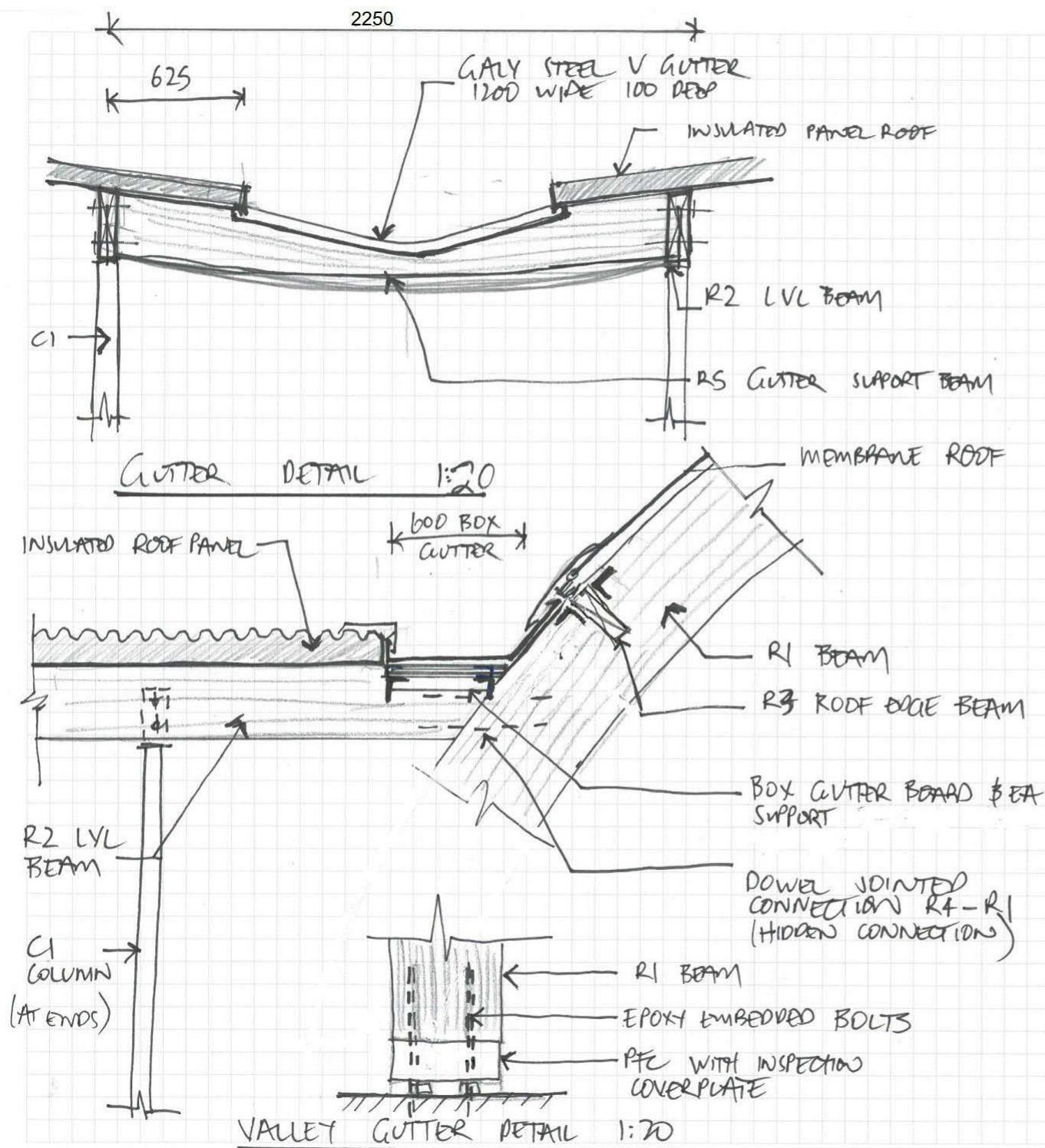
MUST NOT BE REMOVED FROM DRW

MUST NOT BE REMOVED FROM DRW

C:\Projects\DP\REV007634 - SE - Village - Consultant\46407634\ARCS\MOD-2019\A1 Local Eng.dwg  
8/9/2019 4:36:47 PM

QAV10.1

© Copyright AECOM PTY LTD 2009



SCALED FROM ORIGINAL SKETCHES - NTS

KEYPLAN

CONSULTANTS

- FL01 HONED CONCRETE FLOOR, NON SLIP CLEAR SEALED FINISH  
BK01 POLISHED CONCRETE BLOCK STACK BOND, SEALED / ANTI GRAFFITI FINISH  
BA01 70x35 ALUMINIUM BATTENS ANODISED FINISH  
CL01 FC SHEET CEILING - HARDIEGROOVE LINING PAINTED  
RF01 MEMBRANE ROOF SHEETING - VALMEX MEHATOP FIRE RESISTANT FR700, 20YR WARRANTY (SUPPLIER: MAKMAX OR EQUAL)  
RF02 INSULATED PANEL ROOFING - MATT FINISH  
RF03 GUTTER ON CURVED STEEL ANGLE SUPPORTS  
ST01 GLULAM CURVED BEAM - TO ENGINEERS DETAILS, H3 EXTERNAL GRADE SOFTWOOD OR HARDWOOD, (ALSO NOTED AS R1)  
ST02 GLULAM RAFTER (ALSO NOTED AS R2)  
ST03 STEEL COLUMN (60SHS) RECESS INTO BLOCKWORK (ALSO NOTED AS C1)

NOTES:  
BASED ON HIGHLY VARIABLE GROUNDWATER AND SUB GRADE CONDITIONS THE LANDSCAPE CONTRACTOR IS TO ASSES AND CONFIRM ANY REQUIREMENT FOR SUBSOIL DRAINAGE TO TREE PLANTING PITS AND PLANTING AREAS PRIOR TO PLACEMENT OF TOPSOIL AND PLANTING.  
SHOULD DRAINAGE BE ASSESSED AS POOR OR INADEQUATE LANDSCAPE CONTRACTOR TO ADVISE PROJECT SUPERINTENDENT FOR INSTRUCTION TO INSTALL SUB SURFACE DRAINAGE.  
SAFETY IN DESIGN REPORT:  
SAFETY IN DESIGN ISSUES HAVE BEEN ASSESSED AS PART OF THE DESIGN PROCESS. ALL REASONABLE STEPS HAVE BEEN TAKEN TO ENSURE HAZARDS AND RISKS NORMALLY ASSOCIATED WITH THIS TYPE OF DESIGN HAVE BEEN MITIGATED AND/OR COMMUNICATED.  
THERE ARE NO UNUSUAL HAZARDS / RISKS THAT WOULD NOT NORMALLY BE ASSOCIATED WITH THIS TYPE OF DESIGN AS DETAILED.

NOTES

THIS DRAWING SHOULD BE READ IN CONJUNCTION WITH AECOM PTY LTD PREPARED SPECIFICATIONS AND DETAILS. SHOULD A CONFLICT EXIST, ADVICE AND DIRECTION SHOULD BE SOUGHT FROM AECOM PTY LTD PRIOR TO UNDERTAKING ANY CONSTRUCTION WORKS. ALL LEVELS SHOWN ARE IN METRES AUSTRALIAN HEIGHT DATUM, AND DIMENSIONS IN MILLIMETRES UNLESS OTHERWISE NOTED.

ALL INFORMATION RELATING TO CIVIL, STRUCTURAL SERVICES AND OTHER WORKS AS REPRESENTED ON THIS DRAWING AS PREPARED BY AECOM PTY LTD IS FOR AECOM REFERENCE AND COORDINATION PURPOSES ONLY. ALL DOCUMENTATION TO THESE AND OTHER WORKS OUTSIDE THE SCOPE DEFINED FOR AECOM PTY LTD SHOULD BE REFERRED TO THE RELEVANT CONSULTANT'S DRAWINGS AND SPECIFICATION FOR DETAILS.

THIS DRAWING IS CONFIDENTIAL AND SHALL ONLY BE USED FOR THE PURPOSES OF THIS PROJECT.

AMENDMENTS			APPROVED
ISSUE	DATE	AMENDMENT	
01	19.03.19	DRAFT FOR PRE-DA REVIEW	JB
02	16.08.19	DA ISSUE	JB

PROJECT

COMMUNITY ACTIVATION SHELTER

PROJECT NUMBER

60487634

CLIENT



DRAWING TITLE

ARCHITECTURAL  
SKETCH DETAILS

AECOM

LEVEL 21, 420 GEORGE STREET

SYDNEY NSW 2000 AUSTRALIA

© Copyright AECOM AUSTRALIA PTY LTD 2009

SCALE

@ A1

DRAWING NUMBER

60487634-SN-NC-AR-703

ISSUE

02

PRELIMINARY

MUST NOT BE REMOVED FROM DRW

MUST NOT BE REMOVED FROM DRW

MUST NOT BE REMOVED FROM DRW



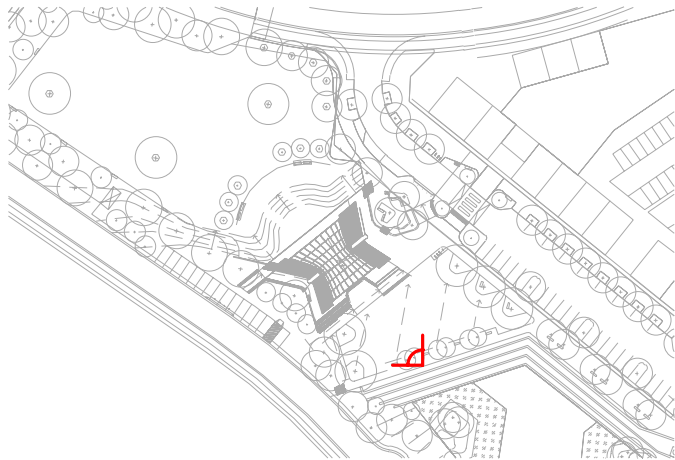
C:\Projects\DP\REV\087634 - SE Village - Content\R\60487634-AR-AS-MOD-2018\A1 Local Eng.dwg 8/29/2019 4:36:08 PM

QAV10.1

© Copyright AECOM PTY LTD 2009



PERSPECTIVE VIEW FROM SOUTHEAST (ELEMENTS OF LANDSCAPE DESIGN INDICATIVE ONLY)



KEYPLAN

CONSULTANTS

NOTES:  
BASED ON HIGHLY VARIABLE GROUNDWATER AND SUB GRADE CONDITIONS THE LANDSCAPE CONTRACTOR IS TO ASSES AND CONFIRM ANY REQUIREMENT FOR SUBSOIL DRAINAGE TO TREE PLANTING PITS AND PLANTING AREAS PRIOR TO PLACEMENT OF TOPSOIL AND PLANTING.  
SHOULD DRAINAGE BE ASSESSED AS POOR OR INADEQUATE LANDSCAPE CONTRACTOR TO ADVISE PROJECT SUPERINTENDENT FOR INSTRUCTION TO INSTALL SUB SURFACE DRAINAGE.  
SAFETY IN DESIGN REPORT:  
SAFETY IN DESIGN ISSUES HAVE BEEN ASSESSED AS PART OF THE DESIGN PROCESS. ALL REASONABLE STEPS HAVE BEEN TAKEN TO ENSURE HAZARDS AND RISKS NORMALLY ASSOCIATED WITH THIS TYPE OF DESIGN HAVE BEEN MITIGATED AND/OR COMMUNICATED.  
THERE ARE NO UNUSUAL HAZARDS / RISKS THAT WOULD NOT NORMALLY BE ASSOCIATED WITH THIS TYPE OF DESIGN AS DETAILED.

NOTES  
THIS DRAWING SHOULD BE READ IN CONJUNCTION WITH AECOM PTY LTD PREPARED SPECIFICATIONS AND DETAILS. SHOULD A CONFLICT EXIST, ADVICE AND DIRECTION SHOULD BE SOUGHT FROM AECOM PTY LTD PRIOR TO UNDERTAKING ANY CONSTRUCTION WORKS. ALL LEVELS SHOWN ARE IN METRES AUSTRALIAN HEIGHT DATUM, AND DIMENSIONS IN MILLIMETRES UNLESS OTHERWISE NOTED.  
ALL INFORMATION RELATING TO CIVIL, STRUCTURAL, SERVICES AND OTHER WORKS AS REPRESENTED ON THIS DRAWING AS PREPARED BY AECOM PTY LTD IS FOR AECOM REFERENCE AND COORDINATION PURPOSES ONLY. ALL DOCUMENTATION TO THESE AND OTHER WORKS OUTSIDE THE SCOPE DEFINED FOR AECOM PTY LTD SHOULD BE REFERRED TO THE RELEVANT CONSULTANTS' DRAWINGS AND SPECIFICATION FOR DETAILS.  
THIS DRAWING IS CONFIDENTIAL AND SHALL ONLY BE USED FOR THE PURPOSES OF THIS PROJECT.

AMENDMENTS	ISSUE	DATE	AMENDMENT	APPROVED
01	19.03.19	DRAFT FOR PRE-DA REVIEW		JB
02	16.08.19	DA ISSUE		JB

PROJECT  
COMMUNITY ACTIVATION SHELTER

PROJECT NUMBER  
CLIENT

60487634



DRAWING TITLE  
ARCHITECTURAL  
3D VIEW

AECOM

LEVEL 21, 420 GEORGE STREET  
SYDNEY NSW 2000 AUSTRALIA  
© Copyright AECOM AUSTRALIA PTY LTD 2009  
SCALE

T 61 2 8943 0000  
F 61 2 8943 0001  
www.aecom.com  
DRAWN

@ A1  
DRAWING NUMBER  
60487634-SN-NC-AR-900

ISSUE  
02

PRELIMINARY

MUST NOT BE REMOVED FROM DRW

MUST NOT BE REMOVED FROM DRW

MUST NOT BE REMOVED FROM DRW



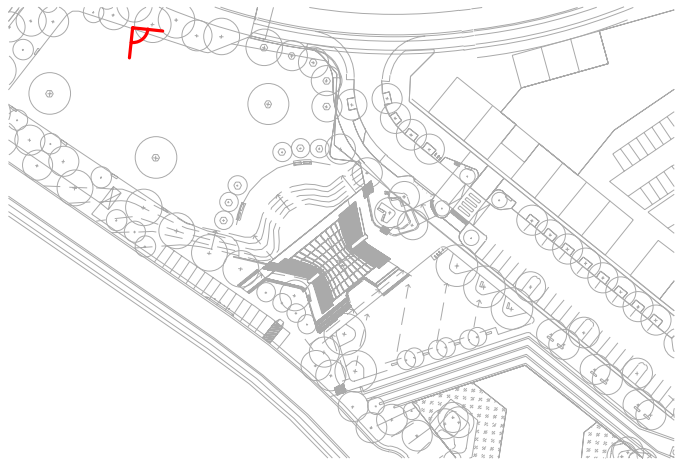
C:\Projects\DP\REV\087634 - SE - Village - Content\R\60487634-AR-CA-SM\00-2019\A1 Local Eng.dwg 8/29/2019 4:36:09 PM

QA V10.1

© Copyright AECOM PTY LTD 2009



PERSPECTIVE VIEW FROM NORTHWEST (ELEMENTS OF LANDSCAPE DESIGN INDICATIVE ONLY)



KEYPLAN

CONSULTANTS

NOTES:  
BASED ON HIGHLY VARIABLE GROUNDWATER AND SUB GRADE CONDITIONS THE LANDSCAPE CONTRACTOR IS TO ASSES AND CONFIRM ANY REQUIREMENT FOR SUBSOIL DRAINAGE TO TREE PLANTING PITS AND PLANTING AREAS PRIOR TO PLACEMENT OF TOPSOIL AND PLANTING.  
SHOULD DRAINAGE BE ASSESSED AS POOR OR INADEQUATE LANDSCAPE CONTRACTOR TO ADVISE PROJECT SUPERINTENDENT FOR INSTRUCTION TO INSTALL SUB SURFACE DRAINAGE.

SAFETY IN DESIGN REPORT:  
SAFETY IN DESIGN ISSUES HAVE BEEN ASSESSED AS PART OF THE DESIGN PROCESS. ALL REASONABLE STEPS HAVE BEEN TAKEN TO ENSURE HAZARDS AND RISKS NORMALLY ASSOCIATED WITH THIS TYPE OF DESIGN HAVE BEEN MITIGATED AND/OR COMMUNICATED.  
THERE ARE NO UNUSUAL HAZARDS / RISKS THAT WOULD NOT NORMALLY BE ASSOCIATED WITH THIS TYPE OF DESIGN AS DETAILED.

NOTES  
THIS DRAWING SHOULD BE READ IN CONJUNCTION WITH AECOM PTY LTD PREPARED SPECIFICATIONS AND DETAILS. SHOULD A CONFLICT EXIST, ADVICE AND DIRECTION SHOULD BE SOUGHT FROM AECOM PTY LTD PRIOR TO UNDERTAKING ANY CONSTRUCTION WORKS. ALL LEVELS SHOWN ARE IN METRES AUSTRALIAN HEIGHT DATUM, AND DIMENSIONS IN MILLIMETRES UNLESS OTHERWISE NOTED.

ALL INFORMATION RELATING TO CIVIL, STRUCTURAL, SERVICES AND OTHER WORKS AS REPRESENTED ON THIS DRAWING AS PREPARED BY AECOM PTY LTD IS FOR AECOM REFERENCE AND COORDINATION PURPOSES ONLY. ALL DOCUMENTATION TO THESE AND OTHER WORKS OUTSIDE THE SCOPE DEFINED FOR AECOM PTY LTD SHOULD BE REFERRED TO THE RELEVANT CONSULTANTS' DRAWINGS AND SPECIFICATION FOR DETAILS.

THIS DRAWING IS CONFIDENTIAL AND SHALL ONLY BE USED FOR THE PURPOSES OF THIS PROJECT.

AMENDMENTS			
ISSUE	DATE	AMENDMENT	APPROVED
01	19.03.19	DRAFT FOR PRE-DA REVIEW	JB
02	16.08.19	DA ISSUE	JB

PROJECT

COMMUNITY ACTIVATION SHELTER

PROJECT NUMBER60487634

CLIENT



DRAWING TITLE

ARCHITECTURAL  
3D VIEW

AECOM

LEVEL 21, 420 GEORGE STREET  
SYDNEY NSW 2000 AUSTRALIA  
© Copyright AECOM AUSTRALIA PTY LTD 2009  
SCALE@ A1

T 61 2 8943 0000  
F 61 2 8943 0001  
www.aecom.com  
DRAWN

DRAWING NUMBER60487634-SN-NC-AR-901

ISSUE02

PRELIMINARY

MUST NOT BE REMOVED FROM DRW

MUST NOT BE REMOVED FROM DRW

MUST NOT BE REMOVED FROM DRW



C:\Project\DP\REV\0487634 - SE\_Village\_Community\60487634-AR-AS-100-2018\1.1 Local\_Feng.1.dwg 8/29/2019 4:36:51 PM

QAV10.1

© Copyright AECOM PTY LTD 2009

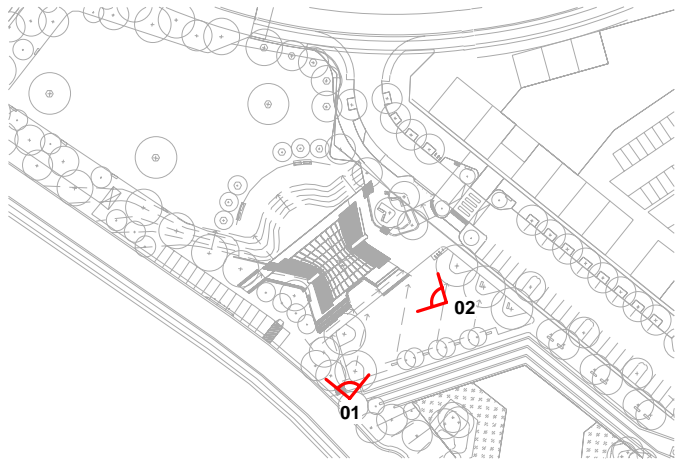


PERSPECTIVE VIEW 01  
(ELEMENTS OF LANDSCAPE DESIGN INDICATIVE ONLY)



PERSPECTIVE VIEW 02  
(ELEMENTS OF LANDSCAPE DESIGN INDICATIVE ONLY)

PRELIMINARY



KEYPLAN

CONSULTANTS

NOTES:  
BASED ON HIGHLY VARIABLE GROUNDWATER AND SUB GRADE CONDITIONS THE LANDSCAPE CONTRACTOR IS TO ASSES AND CONFIRM ANY REQUIREMENT FOR SUBSOIL DRAINAGE TO TREE PLANTING PITS AND PLANTING AREAS PRIOR TO PLACEMENT OF TOPSOIL AND PLANTING.  
SHOULD DRAINAGE BE ASSESSED AS POOR OR INADEQUATE LANDSCAPE CONTRACTOR TO ADVISE PROJECT SUPERINTENDENT FOR INSTRUCTION TO INSTALL SUB SURFACE DRAINAGE.  
SAFETY IN DESIGN REPORT:  
SAFETY IN DESIGN ISSUES HAVE BEEN ASSESSED AS PART OF THE DESIGN PROCESS. ALL REASONABLE STEPS HAVE BEEN TAKEN TO ENSURE HAZARDS AND RISKS NORMALLY ASSOCIATED WITH THIS TYPE OF DESIGN HAVE BEEN MITIGATED AND/OR COMMUNICATED.  
THERE ARE NO UNUSUAL HAZARDS / RISKS THAT WOULD NOT NORMALLY BE ASSOCIATED WITH THIS TYPE OF DESIGN AS DETAILED.

NOTES  
THIS DRAWING SHOULD BE READ IN CONJUNCTION WITH AECOM PTY LTD PREPARED SPECIFICATIONS AND DETAILS. SHOULD A CONFLICT EXIST, ADVICE AND DIRECTION SHOULD BE SOUGHT FROM AECOM PTY LTD PRIOR TO UNDERTAKING ANY CONSTRUCTION WORKS. ALL LEVELS SHOWN ARE IN METRES AUSTRALIAN HEIGHT DATUM, AND DIMENSIONS IN MILLIMETRES UNLESS OTHERWISE NOTED.  
ALL INFORMATION RELATING TO CIVIL, STRUCTURAL, SERVICES AND OTHER WORKS AS REPRESENTED ON THIS DRAWING AS PREPARED BY AECOM PTY LTD IS FOR AECOM REFERENCE AND COORDINATION PURPOSES ONLY. ALL DOCUMENTATION TO THESE AND OTHER WORKS OUTSIDE THE SCOPE DEFINED FOR AECOM PTY LTD SHOULD BE REFERRED TO THE RELEVANT CONSULTANTS' DRAWINGS AND SPECIFICATION FOR DETAILS.  
THIS DRAWING IS CONFIDENTIAL AND SHALL ONLY BE USED FOR THE PURPOSES OF THIS PROJECT.

AMENDMENTS	ISSUE	DATE	AMENDMENT	APPROVED
01	19.03.19	DRAFT FOR PRE-DA REVIEW		JB
02	16.08.19	DA ISSUE		JB

PROJECT  
COMMUNITY ACTIVATION SHELTER

PROJECT NUMBER  
CLIENT

60487634



DRAWING TITLE

ARCHITECTURAL  
3D VIEW

AECOM

LEVEL 21, 420 GEORGE STREET  
SYDNEY NSW 2000 AUSTRALIA  
© Copyright AECOM AUSTRALIA PTY LTD 2009  
SCALE

T 61 2 8943 0000  
F 61 2 8943 0001  
www.aecom.com.au  
DRAWN

DRAWING NUMBER  
60487634-SN-NC-AR-902

ISSUE  
02

MUST NOT BE REMOVED FROM DRW

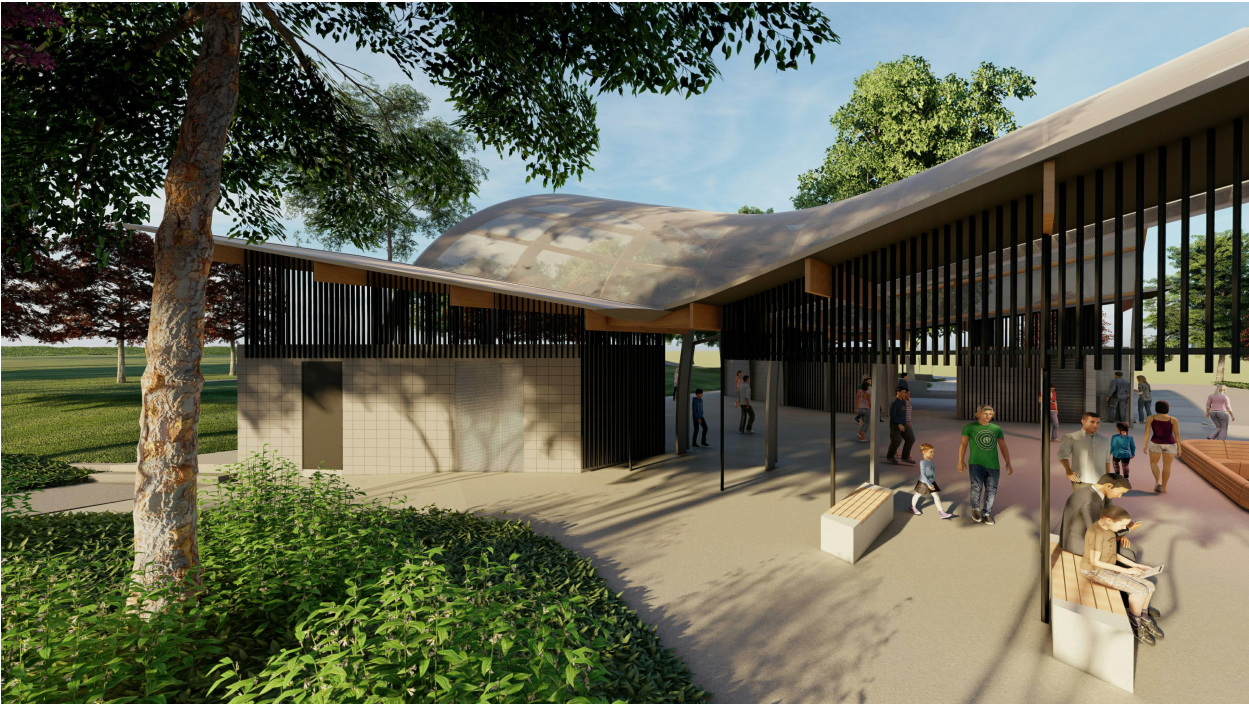
MUST NOT BE REMOVED FROM DRW

MUST NOT BE REMOVED FROM DRW

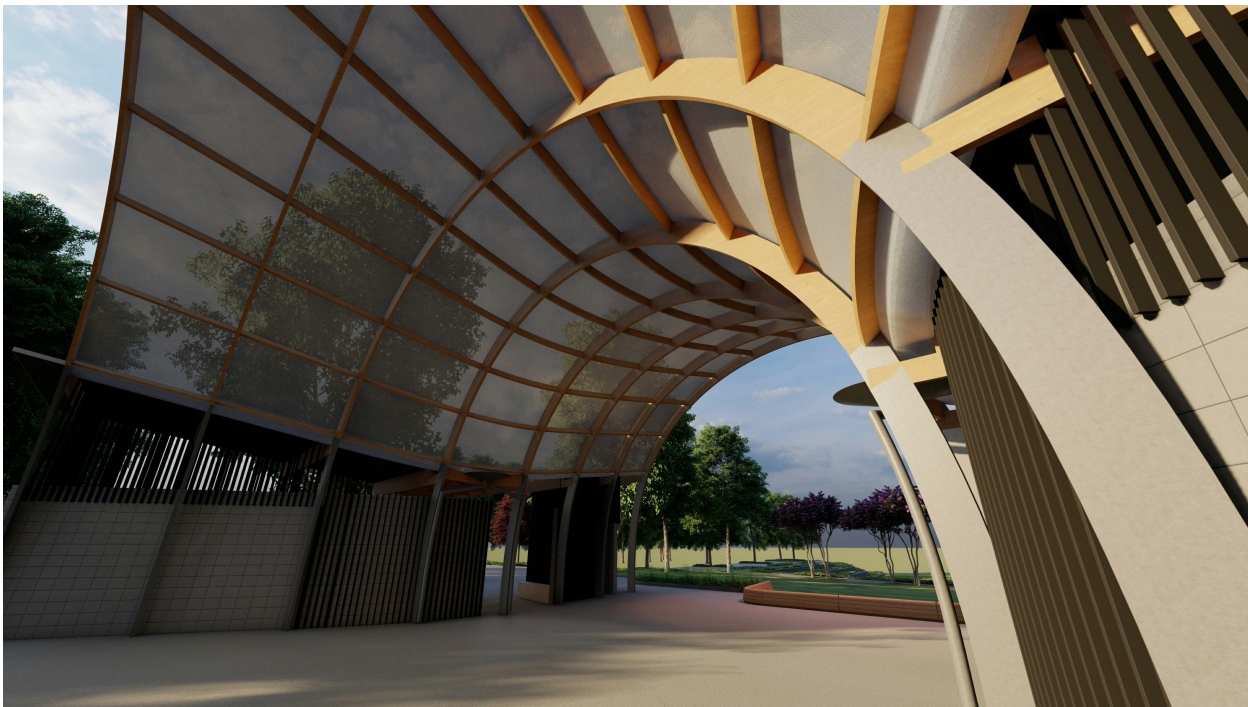




PERSPECTIVE VIEW 03 (ELEMENTS OF LANDSCAPE DESIGN INDICATIVE ONLY)



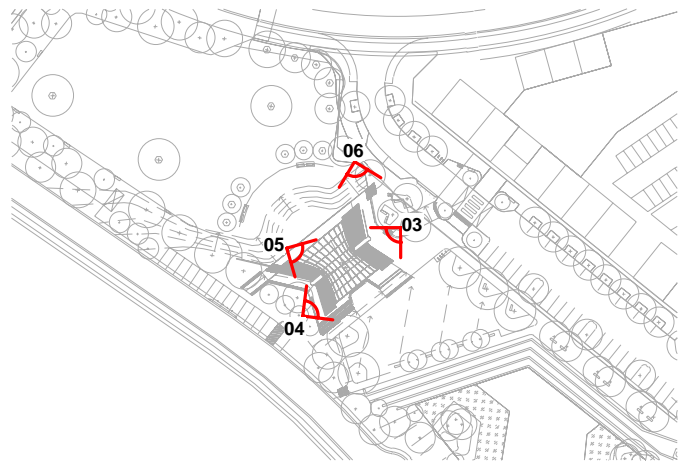
PERSPECTIVE VIEW 04 (ELEMENTS OF LANDSCAPE DESIGN INDICATIVE ONLY)



PERSPECTIVE VIEW 05 (ELEMENTS OF LANDSCAPE DESIGN INDICATIVE ONLY)



PERSPECTIVE VIEW 06 (ELEMENTS OF LANDSCAPE DESIGN INDICATIVE ONLY)



KEYPLAN

CONSULTANTS

NOTES:  
BASED ON HIGHLY VARIABLE GROUNDWATER AND SUB GRADE CONDITIONS THE LANDSCAPE CONTRACTOR IS TO ASSES AND CONFIRM ANY REQUIREMENT FOR SUBSOIL DRAINAGE TO TREE PLANTING PITS AND PLANTING AREAS PRIOR TO PLACEMENT OF TOPSOIL AND PLANTING.  
SHOULD DRAINAGE BE ASSESSED AS POOR OR INADEQUATE LANDSCAPE CONTRACTOR TO ADVISE PROJECT SUPERINTENDENT FOR INSTRUCTION TO INSTALL SUB SURFACE DRAINAGE.  
  
SAFETY IN DESIGN REPORT:  
SAFETY IN DESIGN ISSUES HAVE BEEN ASSESSED AS PART OF THE DESIGN PROCESS. ALL REASONABLE STEPS HAVE BEEN TAKEN TO ENSURE HAZARDS AND RISKS NORMALLY ASSOCIATED WITH THIS TYPE OF DESIGN HAVE BEEN MITIGATED AND/OR COMMUNICATED.  
THERE ARE NO UNUSUAL HAZARDS / RISKS THAT WOULD NOT NORMALLY BE ASSOCIATED WITH THIS TYPE OF DESIGN AS DETAILED.

NOTES  
THIS DRAWING SHOULD BE READ IN CONJUNCTION WITH AECOM PTY LTD PREPARED SPECIFICATIONS AND DETAILS. SHOULD A CONFLICT EXIST, ADVICE AND DIRECTION SHOULD BE SOUGHT FROM AECOM PTY LTD PRIOR TO UNDERTAKING ANY CONSTRUCTION WORKS. ALL LEVELS SHOWN ARE IN METRES AUSTRALIAN HEIGHT DATUM, AND DIMENSIONS IN MILLIMETRES UNLESS OTHERWISE NOTED.  
  
ALL INFORMATION RELATING TO CIVIL, STRUCTURAL, SERVICES AND OTHER WORKS AS REPRESENTED ON THIS DRAWING AS PREPARED BY AECOM PTY LTD IS FOR AECOM REFERENCE AND COORDINATION PURPOSES ONLY. ALL DOCUMENTATION TO THESE AND OTHER WORKS OUTSIDE THE SCOPE DEFINED FOR AECOM PTY LTD SHOULD BE REFERRED TO THE RELEVANT CONSULTANTS' DRAWINGS AND SPECIFICATION FOR DETAILS.  
  
THIS DRAWING IS CONFIDENTIAL AND SHALL ONLY BE USED FOR THE PURPOSES OF THIS PROJECT.

AMENDMENTS				
ISSUE	DATE	AMENDMENT		APPROVED
01	19.03.19	DRAFT FOR PRE-DA REVIEW		JB
02	16.08.19	DA ISSUE		JB

PROJECT  
COMMUNITY ACTIVATION SHELTER

PROJECT NUMBER  
CLIENT

60487634



DRAWING TITLE  
ARCHITECTURAL  
3D VIEW



LEVEL 21, 420 GEORGE STREET  
SYDNEY NSW 2000 AUSTRALIA  
© Copyright AECOM AUSTRALIA PTY LTD 2009  
SCALE

T 61 2 8943 0000  
F 61 2 8943 0001  
www.aecom.com  
DRAWN

DRAWING NUMBER  
ISSUE  
60487634-SN-NC-AR-903  
02

PRELIMINARY

MUST NOT BE REMOVED FROM DRW

MUST NOT BE REMOVED FROM DRW

MUST NOT BE REMOVED FROM DRW