

This External colour concept has been created by the Home Option Gallery.  
 Contact a Complete Home Consultant for all your colour and design needs.

Client Name: Connect Homes

Site Address: TBA- **MONTAGE COLOUR PALETTE**

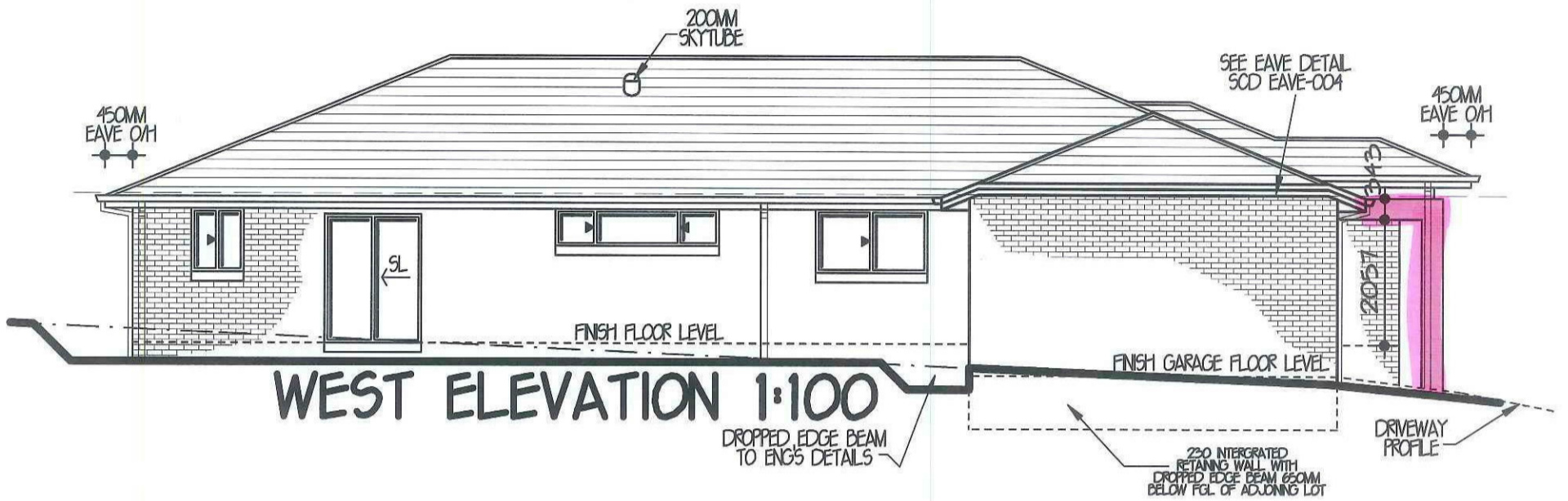
<p>Roof</p>  <p>MONIER- TRADITIONAL – BARRAMUNDI</p>	<p>Face Brick</p>  <p>PGH- ALFRESCO - VINO</p>	<p>Window Frames-</p>  <p>SLATE GREY/WOODLAND GREY</p>	<p>Moroka Colour</p>  <p>TAUBMANS - MANHATTAN</p>
<p>Gutter</p>  <p>COLORBOND- WOODLAND GREY</p>	<p>Fascia</p>  <p>COLORBOND- PAPERBARK</p>	<p>Driveway- Colour On Concrete</p>  <p>GUNMETAL- COVE FINISH</p>	<p>Accent Colour</p>  <p>BRISTOL- MOON RIVER</p>
<p>Garage Door</p>  <p>COLORBOND- PAPERBARK</p>	<p>Downpipes</p>  <p>COLORBOND- WOODLAND GREY</p>	<p>Eaves &amp; External Ceiling</p>  <p>TAUBMANS- PAPERBARK</p>	<p>Entrance Door</p>  <p>TAUBMANS- PAPERBARK</p>

\* Please note colour images are an indication only and may not be a true representation of the final product.  
 This DOES NOT FORM PART OF YOUR HOME BUILDING AGREEMENT. Please refer to your colour selection documentation.





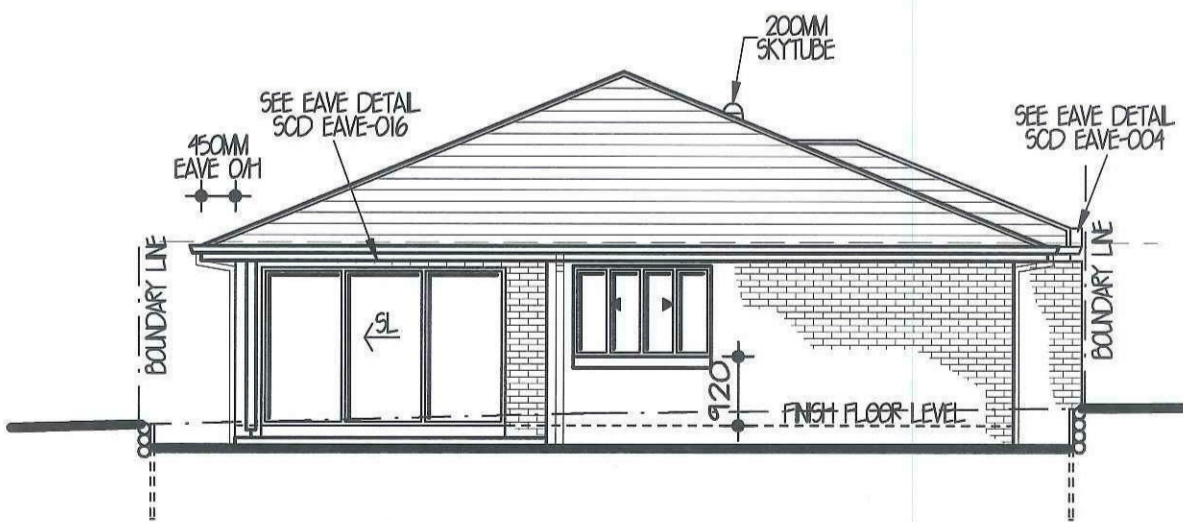
**SOUTH ELEVATION 1:100**



**WEST ELEVATION 1:100**



**EAST ELEVATION 1:100**



**NORTH ELEVATION 1:100**

BRISTOL -  
MOON  
RIVER

Taubmans -  
Manhattan.

EDEN BRAE  
CONNECT HOMES

LEVEL 3,  
22 BROOKHOLLOW AVENUE,  
NORTHWEST BUSINESS PARK,  
BALLKHAM HILLS NSW 2153  
P 8860 9222  
F 8860 9233

FOR	CONNECT HOMES	
AT	LOT 2326 ELMATTA AVE JORDAN SPRINGS DP11689PB	
TYPE	MANCHESTER 23	JOB NO. 0016994
FACADE	ASPECT	HAND LH
MASTER	DWG NO. A20365	PAGE NO. 3 OF 7

AGN  
SYDNEY

LEVEL 2 SUITE 216 MACARTHUR POINT  
NO. 25-27 SOLENT CIRCUIT  
BALLKHAM HILLS  
PO BOX 6410 BALLKHAM HILLS  
BUSINESS CENTRE NSW, 2153  
PHONE: (02) 8824 3533  
FAX: (02) 8824 3544  
WWW.AGNDNET.COM.AU

ISSUE	DATE	REVISION	DRAWN
A	25-9-13	CC PLANS	CM
B	4-10-13	BASIX / AMENDMENTS	JV
C	21-10-13	BASIX / AMENDMENTS	JV

THIS DRAWING IS THE PROPERTY OF CONNECT HOMES. REPRODUCTION, COPYING OR USE IN PART OR WHOLE WITHOUT WRITTEN PERMISSION IS STRICTLY PROHIBITED. LEGAL ACTION WILL BE TAKEN AGAINST OFFENDERS.