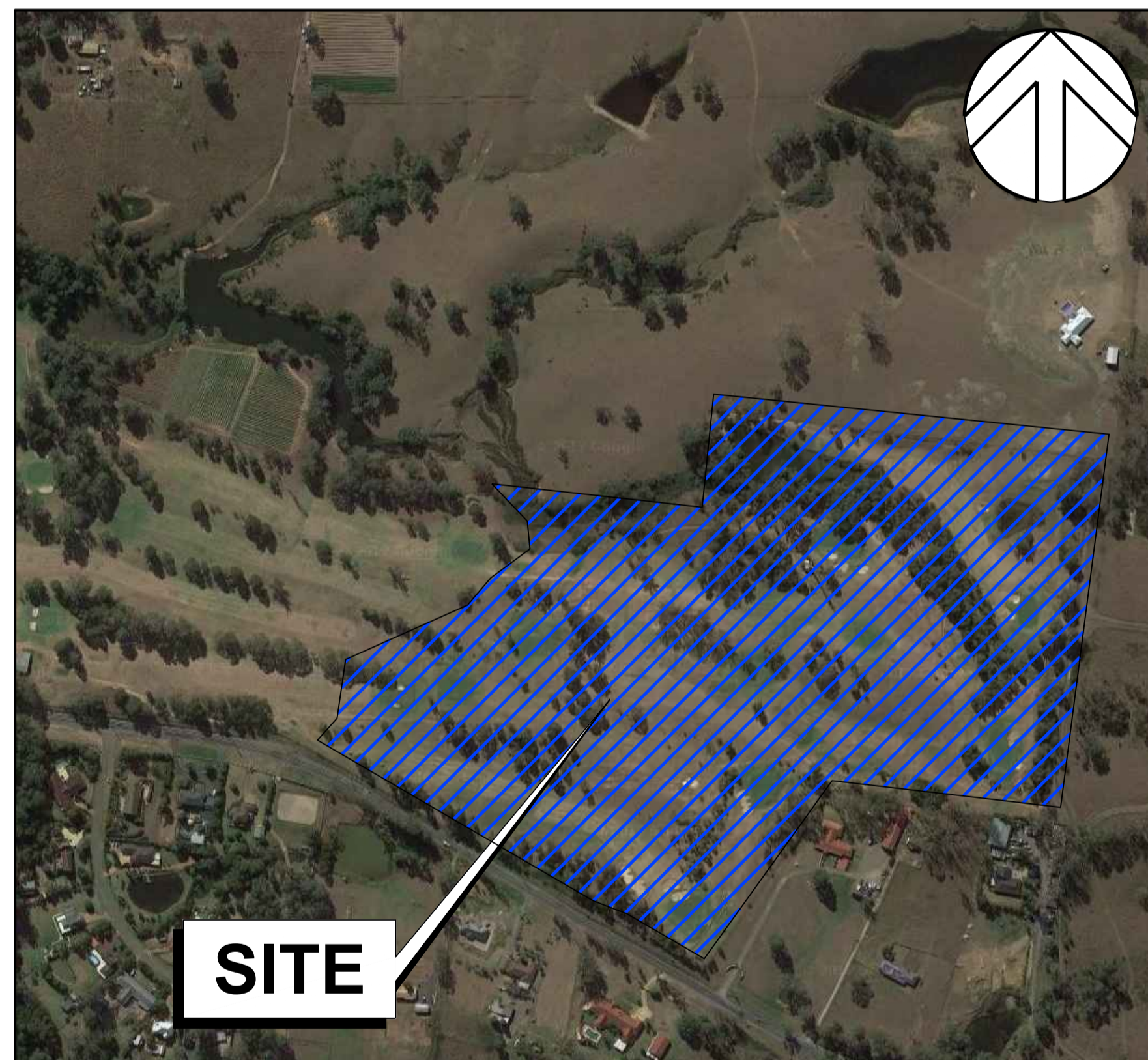


NEPEAN GARDENS

DEVELOPMENT APPLICATION



LOCALITY AERIAL
NOT TO SCALE

SOURCE : GOOGLE EARTH

Sheet List Title		
Sheet Number	DRAWING TITLE	Rev.
C1.00 Arrangement and Overview Plans		
C1.01	Cover Sheet & Drawing List	1
C1.02	Specification Notes	1
C1.03	General Arrangement Plan	1
C1.04	Typical Sections	1
C2.00 Sediment and Erosion Control		
C2.01	Sediment and Erosion Control Plan	1
C2.02	Sediment and Erosion Control Details	1
C5.00 Road Longitudinal and Cross Sections		
C5.01	Road Longitudinal Sections Sheet 1 - Road 1	1
C5.02	Road Longitudinal Sections Sheet 2 - Road 1	1
C5.03	Road Longitudinal Sections Sheet 3 - Roads 2 - 5	1
C6.00 Stormwater Drainage		
C6.01	Stormwater Key Plan	1
C6.02	Stormwater Layout Plan Sheet 1	1
C6.03	Stormwater Layout Plan Sheet 2	1
C6.04	Stormwater Layout Plan Sheet 3	1
C6.05	Stormwater Layout Plan Sheet 4	1
C6.06	Stormwater Pit Schedule Sheet 1	1
C6.07	Stormwater Pit Schedule Sheet 2	1

CLIENT
CATHOLIC CEMETERIES BOARD

LANDSCAPE ARCHITECT
Florence Jaquet
Landscape architect

ARCHITECT
IGNITE

Warren Smith & Partners

Warren Smith & Partners Pty Ltd
Level 9, 233 Castlereagh Street, Sydney 2000 NSW Australia
02 9299 1312 wsp@warrensmith.com.au
www.warrensmith.com.au ABN 36 300 430 126

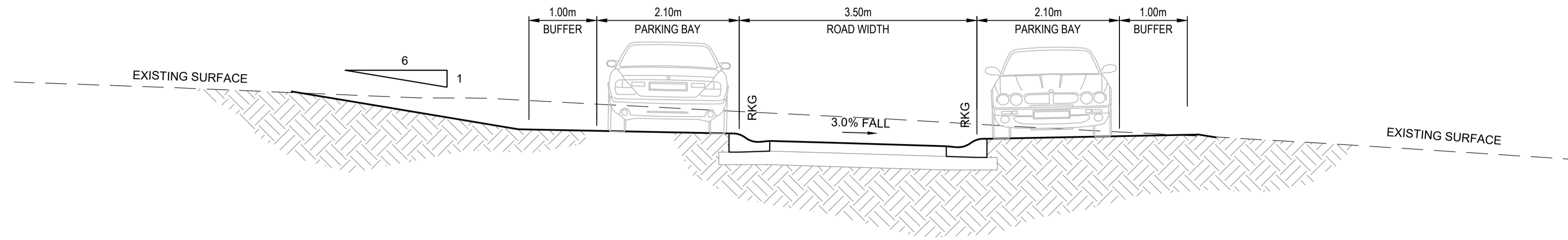
CONSULTING ENGINEERS

- Hydraulic Services ■ Fire Services ■ Civil Services
- Sydney Water Accredited Water Servicing Co-ordinator and Designer

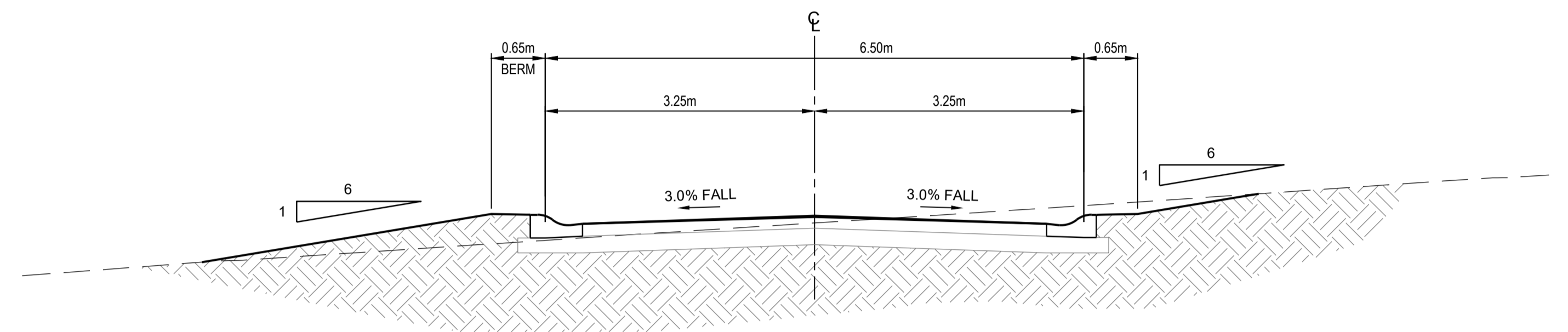


Serving the Construction Industry since 1981.

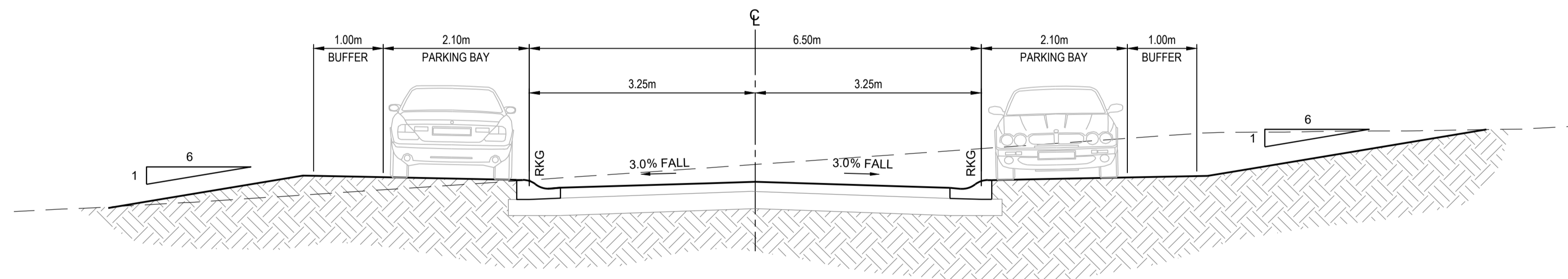
COVER SHEET & DRAWING LIST				
SCALE	DRAWN	DESIGNED	CHECKED	APPROVED
AS SHOWN	M.T.	N.Q.	L.Sh.	M.C.
JOB No.	DRAWING No.		ISSUE	
5936001	C1.01		1	
DATE	STATUS		DEVELOPMENT APPLICATION	
DECEMBER 2019				



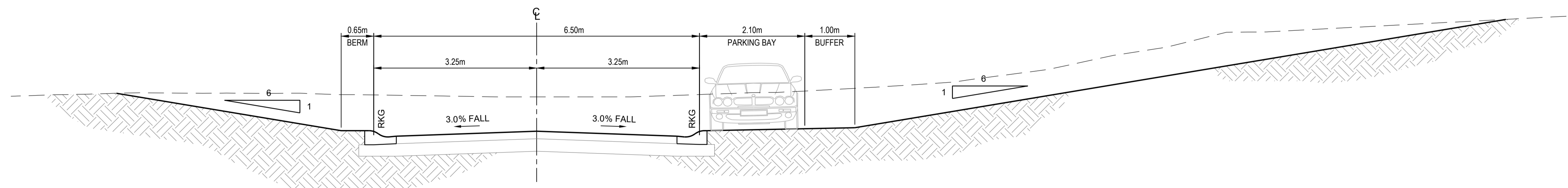
TYPICAL SECTION A
ONE-WAY ROAD
PARKING BOTH SIDES
 SCALE 1:50



TYPICAL SECTION B
TWO WAY ROAD
NO PARKING
 SCALE 1:50



TYPICAL SECTION C
TWO WAY ROAD
PARKING ON BOTH SIDES
 SCALE 1:50



TYPICAL SECTION D
PARKING ON ONE SIDE
 SCALE 1:50

PRELIMINARY - NOT FOR CONSTRUCTION

Path: X:\69690178_A14.dwg
 User: mbyler
 Date: 06/12/2019 11:54:32
 Plot Date: 06/12/2019 11:54:32
 Plot File: T:\69690178\Drawings\A69690178\DWG\C1.04 Typical Sections.dwg

DO NOT SCALE FROM DRAWINGS, CHECK & VERIFY ALL DIMENSIONS & LEVELS BEFORE COMMENCEMENT OF ANY WORK.

THIS DRAWING IS NOT TO BE COPIED IN PART OR WHOLE WITHOUT WRITTEN PERMISSION FROM WARREN SMITH AND PARTNERS.

REVISION	AMENDMENT	DATE	REVISION	AMENDMENT	DATE
1	DEVELOPMENT APPLICATION	06/12/19			

CLIENT
CATHOLIC CEMETERIES BOARD

PROJECT
NEPEAN GARDENS

PREPARED BY

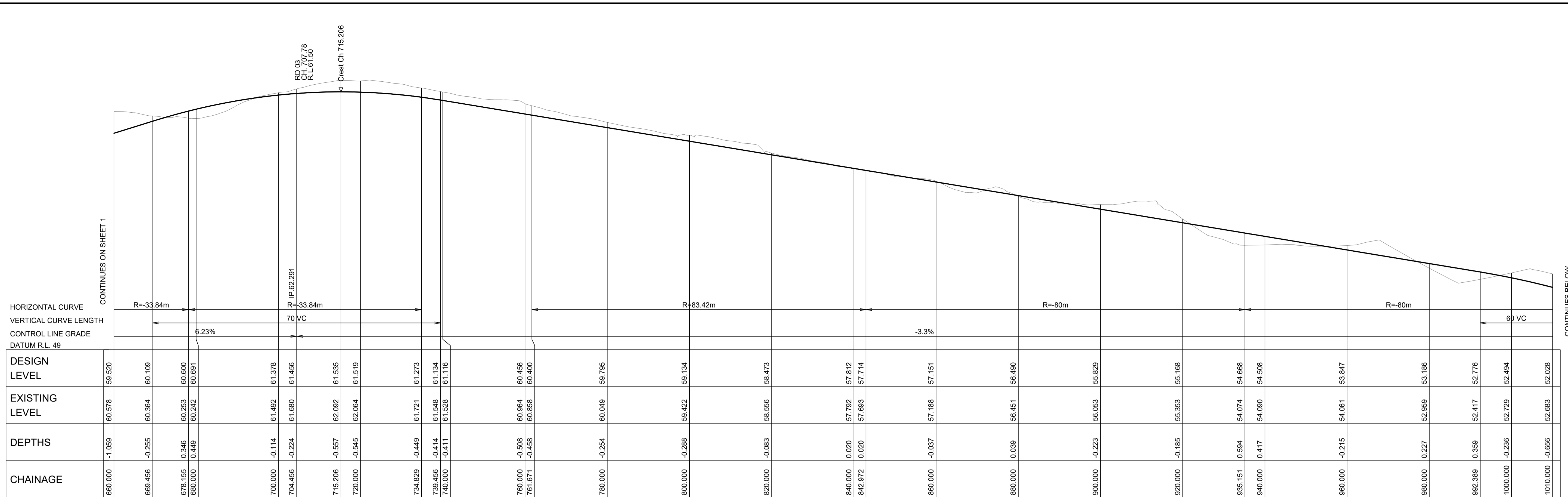
Warren Smith & Partners Pty Ltd
 Level 9, 233 Castlereagh St, Sydney 2000 NSW Australia
 02 9299 1312 wsp@warrensmith.com.au
 www.warrensmith.com.au ABN 36 300 430 126

CONSULTING ENGINEERS

- Hydraulic Services
- Fire Services
- Civil Services
- Sydney Water Accredited Water Servicing Co-ordinator and Designer

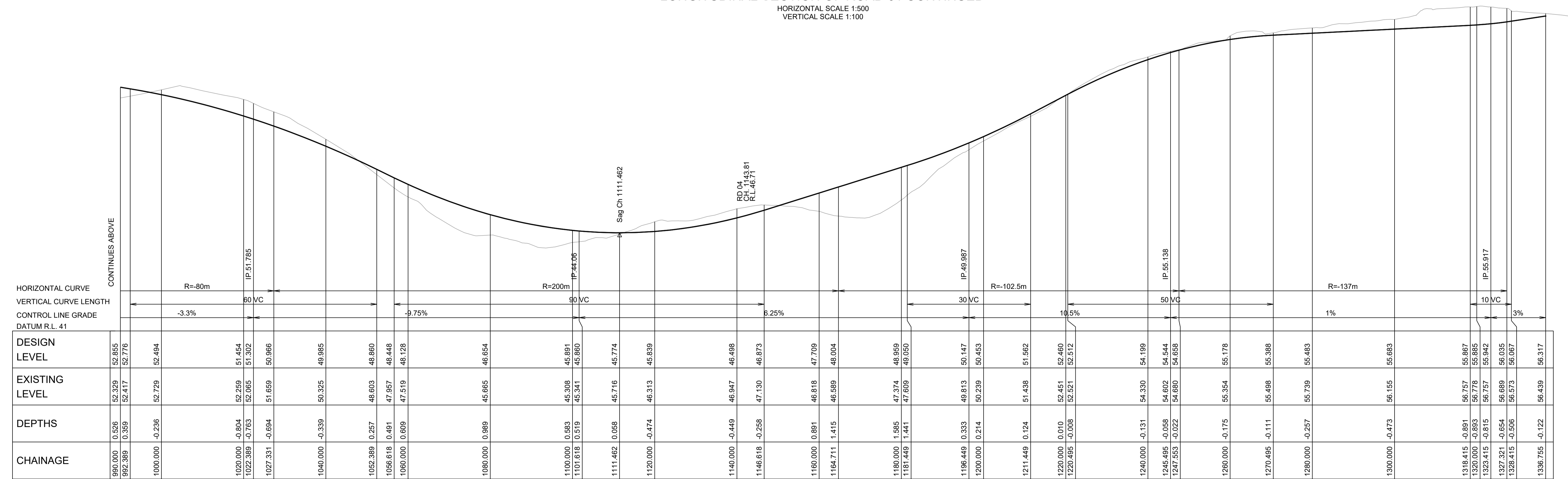
SERVING THE CONSTRUCTION INDUSTRY SINCE 1981.

TITLE				
TYPICAL SECTIONS				
SCALE	DRAWN	DESIGNED	CHECKED	APPROVED
AS SHOWN	M.T.	N.Q.	L.Sh.	M.C.
JOB No.	DRAWING No.		ISSUE	
5936001	C1.04		1	
DATE	STATUS			
DECEMBER 2019	DEVELOPMENT APPLICATION			



LONGITUDINAL SECTION OF ROAD 01 CONTINUED

HORIZONTAL SCALE 1:500
VERTICAL SCALE 1:100



LONGITUDINAL SECTION OF ROAD 01 CONTINUED

HORIZONTAL SCALE 1:500
VERTICAL SCALE 1:100

DO NOT SCALE FROM DRAWINGS, CHECK & VERIFY ALL DIMENSIONS & LEVELS BEFORE COMMENCEMENT OF ANY WORK.

THIS DRAWING IS NOT TO BE COPIED IN PART OR WHOLE WITHOUT WRITTEN PERMISSION FROM WARREN SMITH AND PARTNERS.

REVISION	AMENDMENT	DATE	REVISION	AMENDMENT	DATE
1	DEVELOPMENT APPLICATION	06/12/19			

CLIENT
CATHOLIC CEMETERIES BOARD

PROJECT
NEPEAN GARDENS

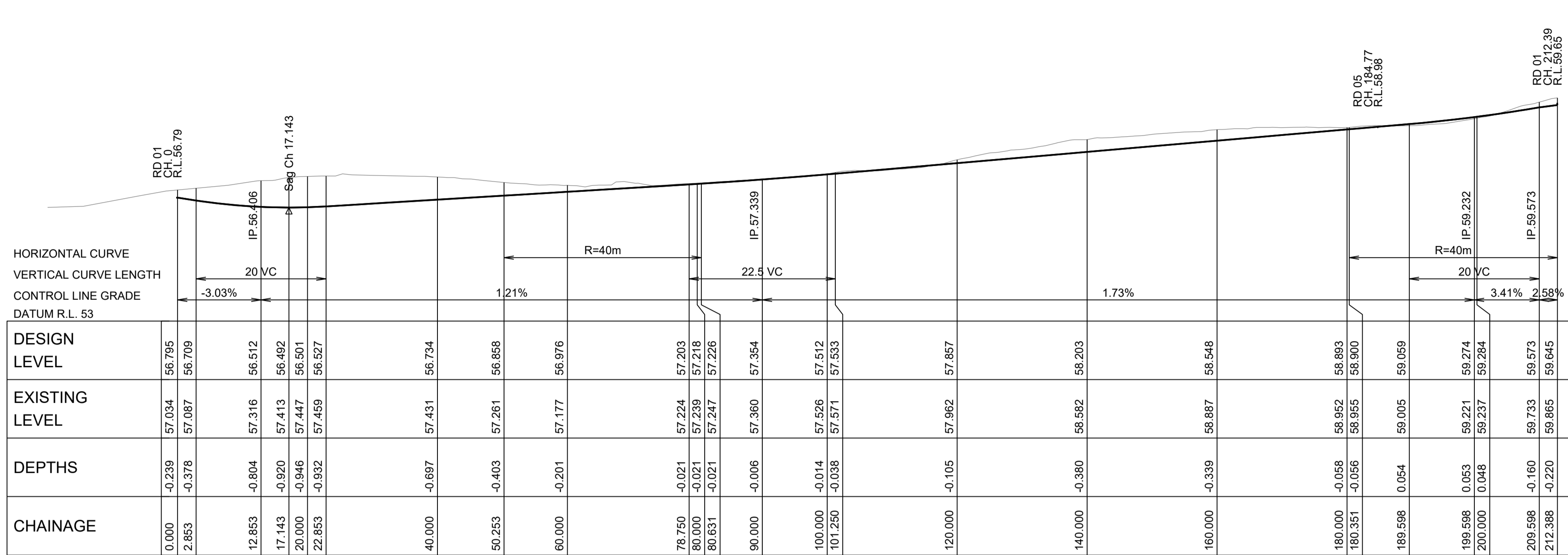
PREPARED BY
Warren Smith & Partners
Level 9, 233 Castlereagh St, Sydney 2000 NSW Australia
02 9299 1312 wsp@warrensmith.com.au
www.warrensmith.com.au ABN 36 300 430 126

CONSULTING ENGINEERS
 ■ Hydraulic Services ■ Fire Services
 ■ Civil Services ■ Sydney Water Accredited Water Servicing Co-ordinator and Designer
 SERVING THE CONSTRUCTION INDUSTRY SINCE 1981.

TITLE
ROAD LONGITUDINAL SECTIONS SHEET 2 - ROAD 1

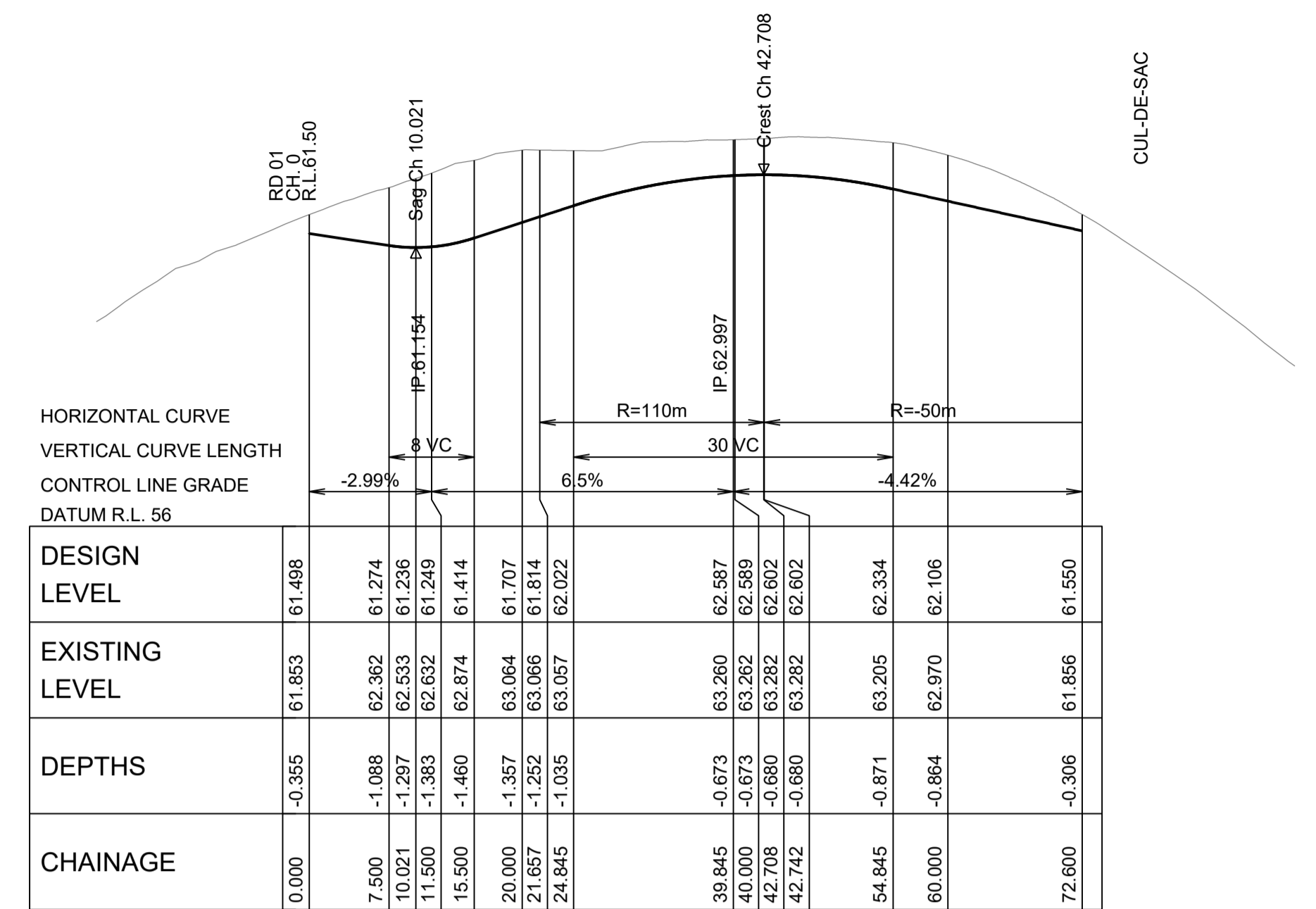
SCALE AS SHOWN	DRAWN M.T.	DESIGNED N.Q.	CHECKED L.Sh.	APPROVED M.C.
JOB No. 5936001		DRAWING No. C5.02		ISSUE 1
DATE DECEMBER 2019		STATUS DEVELOPMENT APPLICATION		

PRELIMINARY - NOT FOR CONSTRUCTION



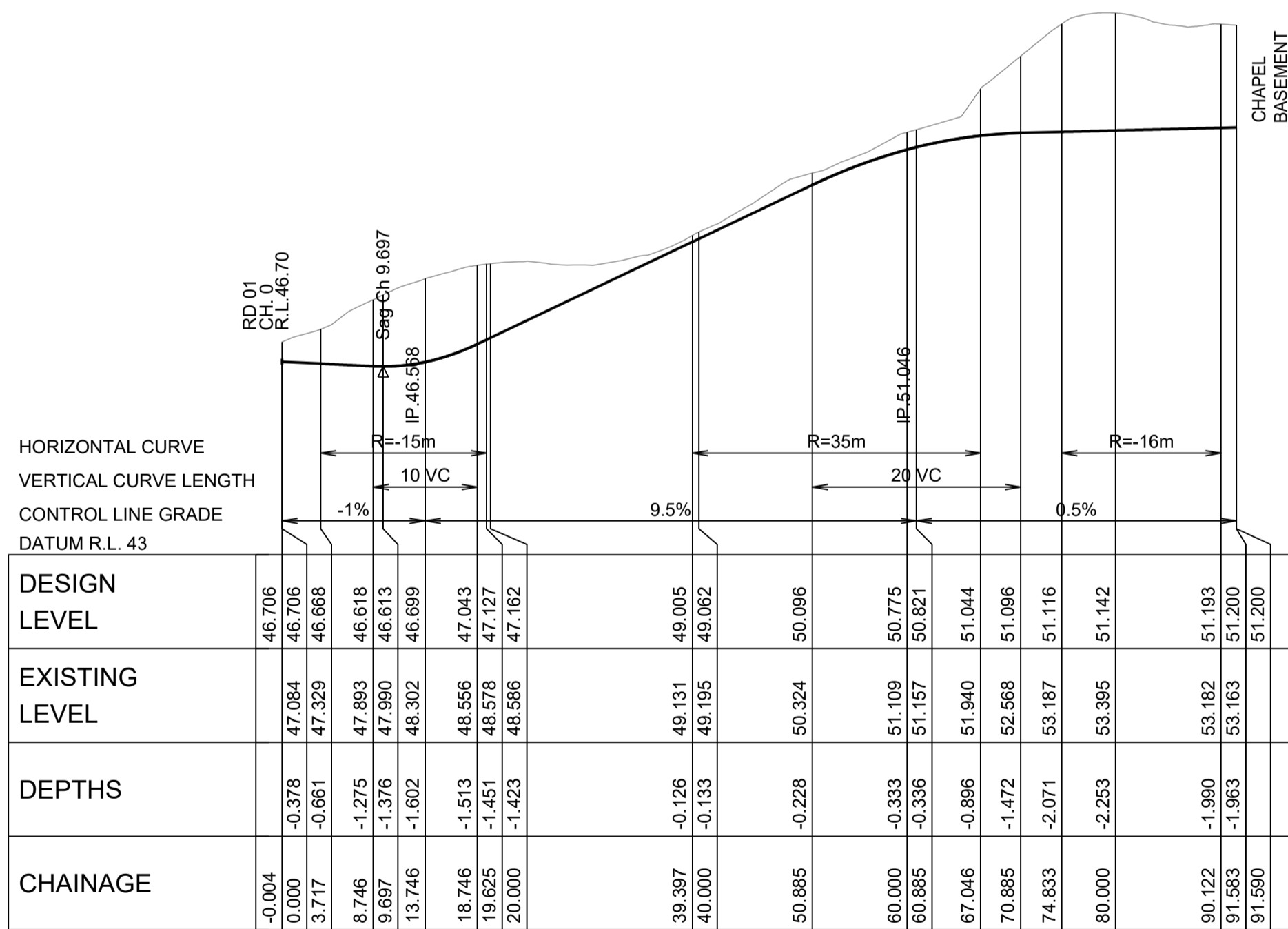
LONGITUDINAL SECTION OF ROAD 02

HORIZONTAL SCALE 1:500
VERTICAL SCALE 1:100



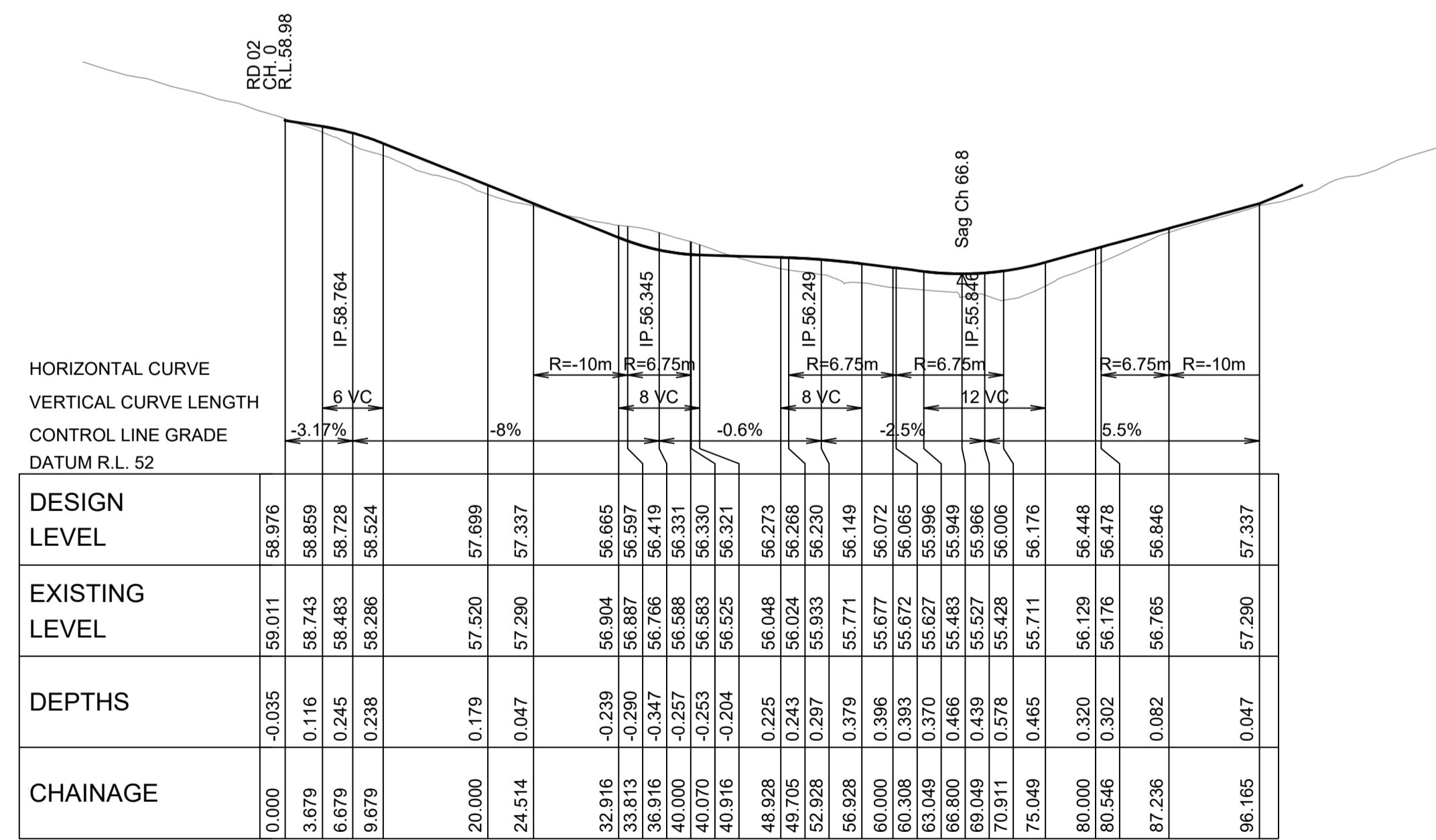
LONGITUDINAL SECTION OF ROAD 03

HORIZONTAL SCALE 1:500
VERTICAL SCALE 1:100



LONGITUDINAL SECTION OF ROAD 04

HORIZONTAL SCALE 1:500
VERTICAL SCALE 1:100



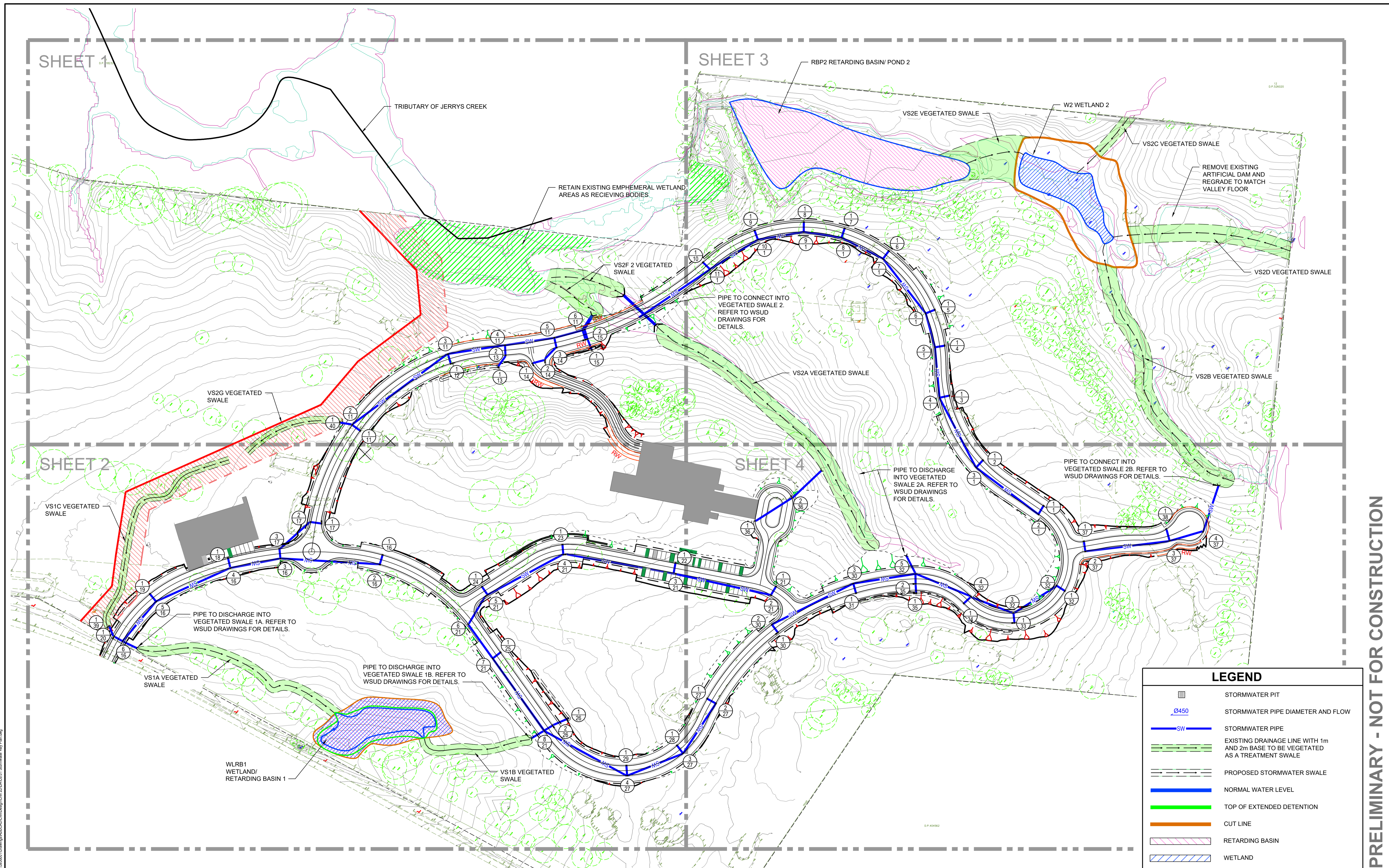
LONGITUDINAL SECTION OF ROAD 05

HORIZONTAL SCALE 1:500
VERTICAL SCALE 1:100

\pds\1\5936001\ROAD_02_1\5936001-ROAD_02_1.dwg
 \pds\1\5936001\ROAD_03_1\5936001-ROAD_03_1.dwg
 \pds\1\5936001\ROAD_04_1\5936001-ROAD_04_1.dwg
 \pds\1\5936001\ROAD_05_1\5936001-ROAD_05_1.dwg
 \pds\1\5936001\ROAD_06_1\5936001-ROAD_06_1.dwg
 \pds\1\5936001\ROAD_07_1\5936001-ROAD_07_1.dwg
 \pds\1\5936001\ROAD_08_1\5936001-ROAD_08_1.dwg
 \pds\1\5936001\ROAD_09_1\5936001-ROAD_09_1.dwg
 \pds\1\5936001\ROAD_10_1\5936001-ROAD_10_1.dwg
 \pds\1\5936001\ROAD_11_1\5936001-ROAD_11_1.dwg
 \pds\1\5936001\ROAD_12_1\5936001-ROAD_12_1.dwg
 \pds\1\5936001\ROAD_13_1\5936001-ROAD_13_1.dwg
 \pds\1\5936001\ROAD_14_1\5936001-ROAD_14_1.dwg
 \pds\1\5936001\ROAD_15_1\5936001-ROAD_15_1.dwg
 \pds\1\5936001\ROAD_16_1\5936001-ROAD_16_1.dwg
 \pds\1\5936001\ROAD_17_1\5936001-ROAD_17_1.dwg
 \pds\1\5936001\ROAD_18_1\5936001-ROAD_18_1.dwg
 \pds\1\5936001\ROAD_19_1\5936001-ROAD_19_1.dwg
 \pds\1\5936001\ROAD_20_1\5936001-ROAD_20_1.dwg
 \pds\1\5936001\ROAD_21_1\5936001-ROAD_21_1.dwg
 \pds\1\5936001\ROAD_22_1\5936001-ROAD_22_1.dwg
 \pds\1\5936001\ROAD_23_1\5936001-ROAD_23_1.dwg
 \pds\1\5936001\ROAD_24_1\5936001-ROAD_24_1.dwg
 \pds\1\5936001\ROAD_25_1\5936001-ROAD_25_1.dwg
 \pds\1\5936001\ROAD_26_1\5936001-ROAD_26_1.dwg
 \pds\1\5936001\ROAD_27_1\5936001-ROAD_27_1.dwg
 \pds\1\5936001\ROAD_28_1\5936001-ROAD_28_1.dwg
 \pds\1\5936001\ROAD_29_1\5936001-ROAD_29_1.dwg
 \pds\1\5936001\ROAD_30_1\5936001-ROAD_30_1.dwg
 \pds\1\5936001\ROAD_31_1\5936001-ROAD_31_1.dwg
 \pds\1\5936001\ROAD_32_1\5936001-ROAD_32_1.dwg
 \pds\1\5936001\ROAD_33_1\5936001-ROAD_33_1.dwg
 \pds\1\5936001\ROAD_34_1\5936001-ROAD_34_1.dwg
 \pds\1\5936001\ROAD_35_1\5936001-ROAD_35_1.dwg
 \pds\1\5936001\ROAD_36_1\5936001-ROAD_36_1.dwg
 \pds\1\5936001\ROAD_37_1\5936001-ROAD_37_1.dwg
 \pds\1\5936001\ROAD_38_1\5936001-ROAD_38_1.dwg
 \pds\1\5936001\ROAD_39_1\5936001-ROAD_39_1.dwg
 \pds\1\5936001\ROAD_40_1\5936001-ROAD_40_1.dwg
 \pds\1\5936001\ROAD_41_1\5936001-ROAD_41_1.dwg
 \pds\1\5936001\ROAD_42_1\5936001-ROAD_42_1.dwg
 \pds\1\5936001\ROAD_43_1\5936001-ROAD_43_1.dwg
 \pds\1\5936001\ROAD_44_1\5936001-ROAD_44_1.dwg
 \pds\1\5936001\ROAD_45_1\5936001-ROAD_45_1.dwg
 \pds\1\5936001\ROAD_46_1\5936001-ROAD_46_1.dwg
 \pds\1\5936001\ROAD_47_1\5936001-ROAD_47_1.dwg
 \pds\1\5936001\ROAD_48_1\5936001-ROAD_48_1.dwg
 \pds\1\5936001\ROAD_49_1\5936001-ROAD_49_1.dwg
 \pds\1\5936001\ROAD_50_1\5936001-ROAD_50_1.dwg
 \pds\1\5936001\ROAD_51_1\5936001-ROAD_51_1.dwg
 \pds\1\5936001\ROAD_52_1\5936001-ROAD_52_1.dwg
 \pds\1\5936001\ROAD_53_1\5936001-ROAD_53_1.dwg
 \pds\1\5936001\ROAD_54_1\5936001-ROAD_54_1.dwg
 \pds\1\5936001\ROAD_55_1\5936001-ROAD_55_1.dwg
 \pds\1\5936001\ROAD_56_1\5936001-ROAD_56_1.dwg
 \pds\1\5936001\ROAD_57_1\5936001-ROAD_57_1.dwg
 \pds\1\5936001\ROAD_58_1\5936001-ROAD_58_1.dwg
 \pds\1\5936001\ROAD_59_1\5936001-ROAD_59_1.dwg
 \pds\1\5936001\ROAD_60_1\5936001-ROAD_60_1.dwg
 \pds\1\5936001\ROAD_61_1\5936001-ROAD_61_1.dwg
 \pds\1\5936001\ROAD_62_1\5936001-ROAD_62_1.dwg
 \pds\1\5936001\ROAD_63_1\5936001-ROAD_63_1.dwg
 \pds\1\5936001\ROAD_64_1\5936001-ROAD_64_1.dwg
 \pds\1\5936001\ROAD_65_1\5936001-ROAD_65_1.dwg
 \pds\1\5936001\ROAD_66_1\5936001-ROAD_66_1.dwg
 \pds\1\5936001\ROAD_67_1\5936001-ROAD_67_1.dwg
 \pds\1\5936001\ROAD_68_1\5936001-ROAD_68_1.dwg
 \pds\1\5936001\ROAD_69_1\5936001-ROAD_69_1.dwg
 \pds\1\5936001\ROAD_70_1\5936001-ROAD_70_1.dwg
 \pds\1\5936001\ROAD_71_1\5936001-ROAD_71_1.dwg
 \pds\1\5936001\ROAD_72_1\5936001-ROAD_72_1.dwg
 \pds\1\5936001\ROAD_73_1\5936001-ROAD_73_1.dwg
 \pds\1\5936001\ROAD_74_1\5936001-ROAD_74_1.dwg
 \pds\1\5936001\ROAD_75_1\5936001-ROAD_75_1.dwg
 \pds\1\5936001\ROAD_76_1\5936001-ROAD_76_1.dwg
 \pds\1\5936001\ROAD_77_1\5936001-ROAD_77_1.dwg
 \pds\1\5936001\ROAD_78_1\5936001-ROAD_78_1.dwg
 \pds\1\5936001\ROAD_79_1\5936001-ROAD_79_1.dwg
 \pds\1\5936001\ROAD_80_1\5936001-ROAD_80_1.dwg
 \pds\1\5936001\ROAD_81_1\5936001-ROAD_81_1.dwg
 \pds\1\5936001\ROAD_82_1\5936001-ROAD_82_1.dwg
 \pds\1\5936001\ROAD_83_1\5936001-ROAD_83_1.dwg
 \pds\1\5936001\ROAD_84_1\5936001-ROAD_84_1.dwg
 \pds\1\5936001\ROAD_85_1\5936001-ROAD_85_1.dwg
 \pds\1\5936001\ROAD_86_1\5936001-ROAD_86_1.dwg
 \pds\1\5936001\ROAD_87_1\5936001-ROAD_87_1.dwg
 \pds\1\5936001\ROAD_88_1\5936001-ROAD_88_1.dwg
 \pds\1\5936001\ROAD_89_1\5936001-ROAD_89_1.dwg
 \pds\1\5936001\ROAD_90_1\5936001-ROAD_90_1.dwg
 \pds\1\5936001\ROAD_91_1\5936001-ROAD_91_1.dwg
 \pds\1\5936001\ROAD_92_1\5936001-ROAD_92_1.dwg
 \pds\1\5936001\ROAD_93_1\5936001-ROAD_93_1.dwg
 \pds\1\5936001\ROAD_94_1\5936001-ROAD_94_1.dwg
 \pds\1\5936001\ROAD_95_1\5936001-ROAD_95_1.dwg
 \pds\1\5936001\ROAD_96_1\5936001-ROAD_96_1.dwg
 \pds\1\5936001\ROAD_97_1\5936001-ROAD_97_1.dwg
 \pds\1\5936001\ROAD_98_1\5936001-ROAD_98_1.dwg
 \pds\1\5936001\ROAD_99_1\5936001-ROAD_99_1.dwg
 \pds\1\5936001\ROAD_100_1\5936001-ROAD_100_1.dwg

PRELIMINARY - NOT FOR CONSTRUCTION

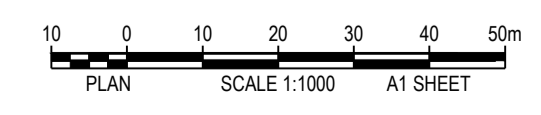
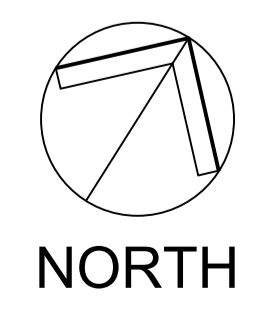
DO NOT SCALE FROM DRAWINGS, CHECK & VERIFY ALL DIMENSIONS & LEVELS BEFORE COMMENCEMENT OF ANY WORK. THIS DRAWING IS NOT TO BE COPIED IN PART OR WHOLE WITHOUT WRITTEN PERMISSION FROM WARREN SMITH AND PARTNERS.		REVISION 1 DEVELOPMENT APPLICATION 06/12/19	AMENDMENT DATE 	REVISION 	AMENDMENT DATE 	CLIENT CATHOLIC CEMETERIES BOARD PROJECT NEPEAN GARDENS	PREPARED BY Warren Smith & Partners Warren Smith & Partners Pty Ltd Level 9, 233 Castlereagh St, Sydney 2000 NSW Australia 02 9299 1312 wsp@warrensmith.com.au www.warrensmith.com.au ABN 36 300 430 126	TITLE ROAD LONGITUDINAL SECTIONS SHEET 3 - ROADS 2 - 5	
		SCALE AS SHOWN	DRAWN M.T.	DESIGNED N.Q.	CHECKED L.Sh.	APPROVED M.C.	JOB No. 5936001	DRAWING No. C5.03	ISSUE 1



PRELIMINARY - NOT FOR CONSTRUCTION

LEGEND	
	STORMWATER PIT
	STORMWATER PIPE DIAMETER AND FLOW
	STORMWATER PIPE
	EXISTING DRAINAGE LINE WITH 1m AND 2m BASE TO BE VEGETATED AS A TREATMENT SWALE
	PROPOSED STORMWATER SWALE
	NORMAL WATER LEVEL
	TOP OF EXTENDED DETENTION
	CUT LINE
	RETARDING BASIN
	WETLAND

DO NOT SCALE FROM DRAWINGS, CHECK & VERIFY ALL DIMENSIONS & LEVELS BEFORE COMMENCEMENT OF ANY WORK.
THIS DRAWING IS NOT TO BE COPIED IN PART OR WHOLE WITHOUT WRITTEN PERMISSION FROM WARREN SMITH AND PARTNERS.



REVISION	AMENDMENT	DATE	REVISION	AMENDMENT	DATE
1	DEVELOPMENT APPLICATION	06/12/19			

CLIENT
CATHOLIC CEMETERIES BOARD

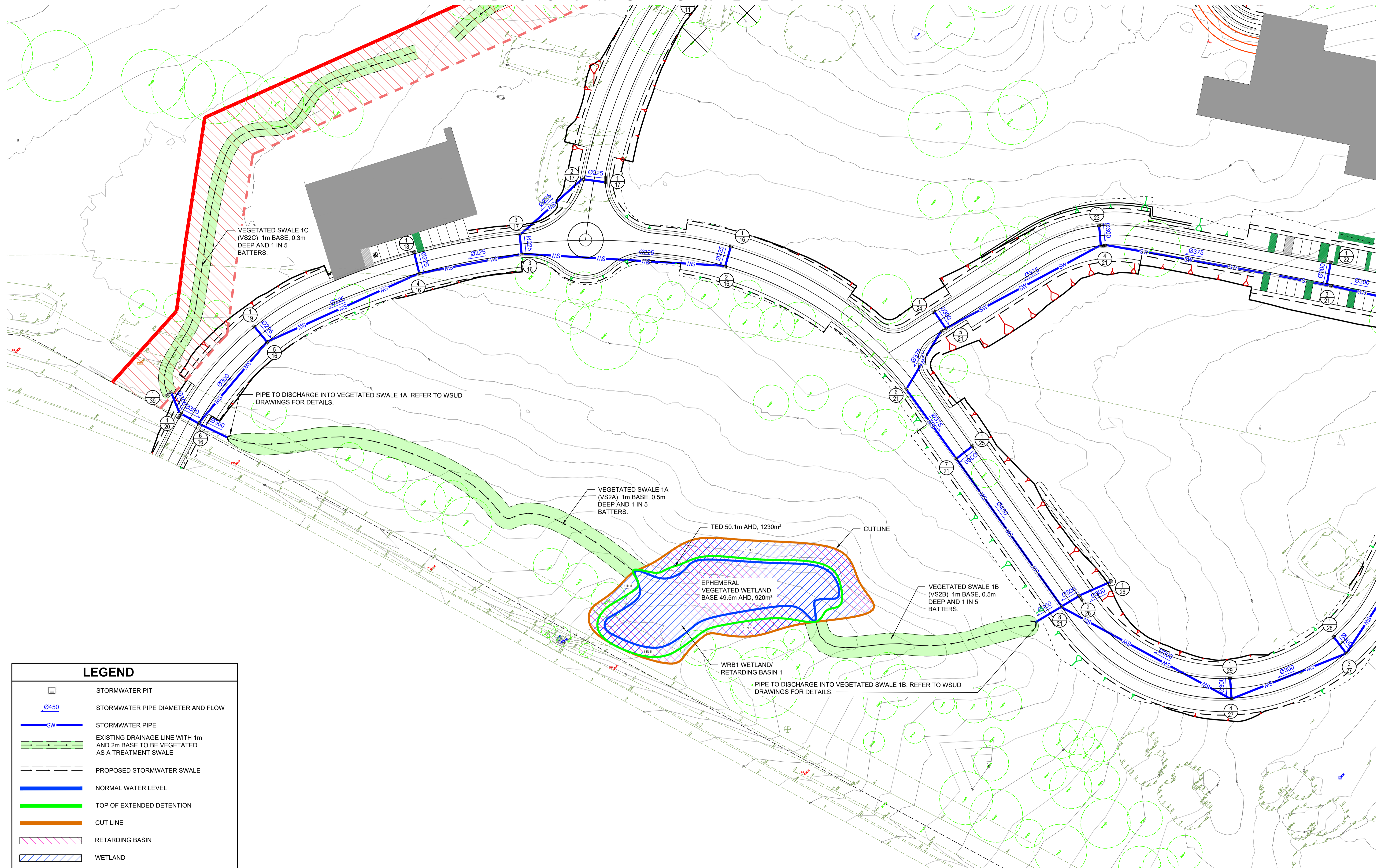
PROJECT
NEPEAN GARDENS

PREPARED BY
Warren Smith & Partners
Level 9, 233 Castlereagh St, Sydney 2000 NSW Australia
02 9299 1312 wsp@warrensmith.com.au
www.warrensmith.com.au ABN 36 300 430 126

CONSULTING ENGINEERS
■ Hydraulic Services ■ Fire Services
■ Civil Services ■ Sydney Water Accredited Water Servicing Co-ordinator and Designer

SERVING THE CONSTRUCTION INDUSTRY SINCE 1981.

TITLE				
STORMWATER KEY PLAN				
SCALE 1:1000 @ A1	DRAWN M.T.	DESIGNED N.Q.	CHECKED L.Sh.	APPROVED M.C.
JOB No. 5936001		DRAWING No. C6.01		ISSUE 1
DATE DECEMBER 2019	STATUS DEVELOPMENT APPLICATION			



LEGEND

- STORMWATER PIT
- $\phi 450$ STORMWATER PIPE DIAMETER AND FLOW
- STORMWATER PIPE
- EXISTING DRAINAGE LINE WITH 1m AND 2m BASE TO BE VEGETATED AS A TREATMENT SWALE
- PROPOSED STORMWATER SWALE
- NORMAL WATER LEVEL
- TOP OF EXTENDED DETENTION
- CUT LINE
- RETARDING BASIN
- WETLAND

DO NOT SCALE FROM DRAWINGS. CHECK & VERIFY ALL DIMENSIONS & LEVELS BEFORE COMMENCEMENT OF ANY WORK.

THIS DRAWING IS NOT TO BE COPIED IN PART OR WHOLE WITHOUT WRITTEN PERMISSION FROM WARREN SMITH AND PARTNERS.

REVISION	AMENDMENT	DATE	REVISION	AMENDMENT	DATE
1	DEVELOPMENT APPLICATION	06/12/19			

CLIENT
CATHOLIC CEMETERIES BOARD

PROJECT
NEPEAN GARDENS

PREPARED BY

Warren Smith & Partners Pty Ltd
Level 9, 233 Castlereagh St, Sydney 2000 NSW Australia
02 9299 1312 wsp@warrensmith.com.au
www.warrensmith.com.au ABN 36 300 430 126

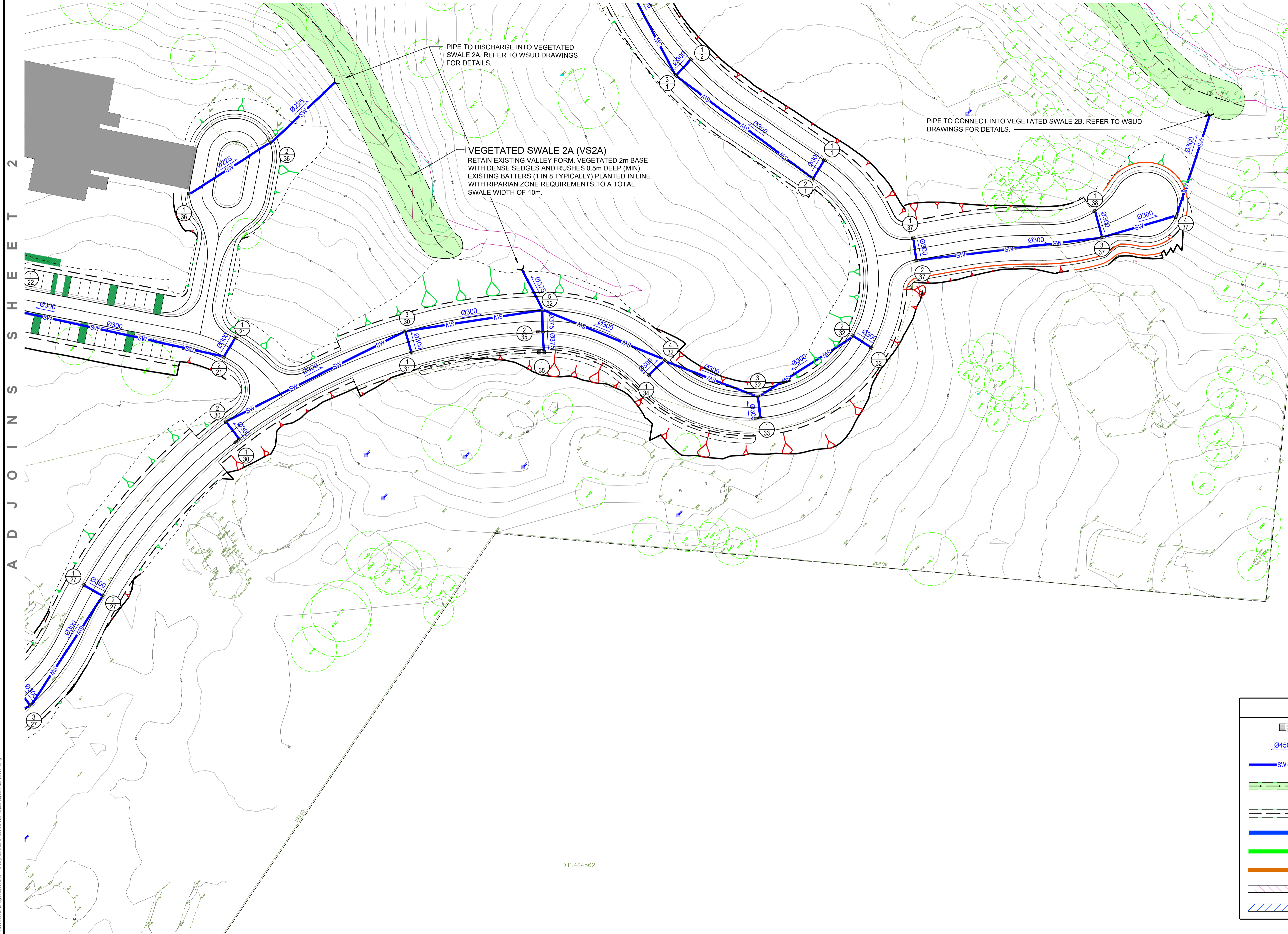
CONSULTING ENGINEERS

- Hydraulic Services
- Fire Services
- Civil Services
- Sydney Water Accredited Water Servicing Co-ordinator and Designer

SERVING THE CONSTRUCTION INDUSTRY SINCE 1981.

TITLE
STORMWATER LAYOUT PLAN SHEET 2

SCALE 1:500 @ A1	DRAWN M.T.	DESIGNED N.Q.	CHECKED L.Sh.	APPROVED M.C.
JOB No. 5936001		DRAWING No. C6.03		ISSUE 1
DATE DECEMBER 2019		STATUS DEVELOPMENT APPLICATION		



A D J O I N S S H E E T 2

LEGEND	
	STORMWATER PIT
	STORMWATER PIPE DIAMETER AND FLOW
	STORMWATER PIPE
	EXISTING DRAINAGE LINE WITH 1m AND 2m BASE TO BE VEGETATED AS A TREATMENT SWALE
	PROPOSED STORMWATER SWALE
	NORMAL WATER LEVEL
	TOP OF EXTENDED DETENTION
	CUT LINE
	RETARDING BASIN
	WETLAND

PRELIMINARY - NOT FOR CONSTRUCTION

DO NOT SCALE FROM DRAWINGS. CHECK & VERIFY ALL DIMENSIONS & LEVELS BEFORE COMMENCEMENT OF ANY WORK.
THIS DRAWING IS NOT TO BE COPIED IN PART OR WHOLE WITHOUT WRITTEN PERMISSION FROM WARREN SMITH AND PARTNERS.

REVISION	AMENDMENT	DATE	REVISION	AMENDMENT	DATE
1	DEVELOPMENT APPLICATION	06/12/19			

CLIENT
CATHOLIC CEMETERIES BOARD

PROJECT
NEPEAN GARDENS

PREPARED BY

Warren Smith & Partners Pty Ltd
Level 9, 233 Castlereagh St, Sydney 2000 NSW Australia
02 9299 1312 wsp@warrensmith.com.au
www.warrensmith.com.au ABN 36 300 430 126

CONSULTING ENGINEERS

- Hydraulic Services
- Fire Services
- Civil Services
- Sydney Water Accredited Water Servicing Co-ordinator and Designer

SERVING THE CONSTRUCTION INDUSTRY SINCE 1981.

TITLE				
STORMWATER LAYOUT PLAN SHEET 4				
SCALE 1:500 @ A1	DRAWN M.T.	DESIGNED N.Q.	CHECKED L.Sh.	APPROVED M.C.
JOB No. 5936001	DRAWING No. C6.05		ISSUE 1	
DATE DECEMBER 2019	STATUS DEVELOPMENT APPLICATION			

Name	Surface Elev. (m)	Pit Depth (m)	Pit Size and Type	From	To	Length (m)	U/S IL (m)	D/S IL (m)	Slope (%)	Pipe Type	Dia (mm)	No. Pipes
Pit 1/1	61.235	0.995	2 x 600 x 900 PIT, CLASS C GRATE	Pit 1/1	Pit 2/1	6.508	60.24	60.175	1	RCP (CLASS 3)	300	1
Pit 2/1	61.245	1.1	600 x 900 PIT, CLASS C GRATE	Pit 2/1	Pit 3/1	45.214	60.145	58.719	3.15	RCP (CLASS 3)	300	1
Pit 3/1	59.782	1.093	600 x 900 PIT, CLASS C GRATE	Pit 3/1	Pit 4/1	45.733	58.689	57.253	3.14	RCP (CLASS 3)	300	1
Pit 4/1	58.31	1.087	600 x 900 PIT, CLASS C GRATE	Pit 4/1	Pit 5/1	29.323	57.223	56.272	3.24	RCP (CLASS 3)	300	1
Pit 5/1	57.346	1.104	600 x 900 PIT, CLASS C GRATE	Pit 5/1	Pit 6/1	20.201	56.242	55.595	3.2	RCP (CLASS 3)	300	1
Pit 6/1	56.65	1.085	600 x 900 PIT, CLASS C GRATE	Pit 6/1	Pit 7/1	39.847	55.565	54.202	3.42	RCP (CLASS 3)	300	1
Pit 7/1	55.26	1.088	600 x 900 PIT, CLASS C GRATE	Pit 7/1	Pit 8/1	26.71	54.172	53.277	3.35	RCP (CLASS 3)	300	1
Pit 8/1	54.336	1.089	600 x 900 PIT, CLASS C GRATE	Pit 8/1	Pit 9/1	22.021	53.247	52.515	3.32	RCP (CLASS 3)	300	1
Pit 9/1	53.575	1.09	600 x 900 PIT, CLASS C GRATE	Pit 9/1	Pit 10/1	26.688	52.485	51.578	3.4	RCP (CLASS 3)	300	1
Pit 10/1	52.642	1.094	600 x 900 PIT, CLASS C GRATE	Pit 10/1	Pit 11/1	32.472	51.548	49.668	5.79	RCP (CLASS 3)	300	1
Pit 11/1	50.675	1.037	600 x 900 PIT, CLASS C GRATE	Pit 11/1	Culvert	49.19	49.638	45.615	8.18	RCP (CLASS 3)	300	1
Pit 1/2	59.778	0.994	600 x 900 PIT, CLASS C GRATE	Pit 1/2	Pit 3/1	6.5	58.784	58.719	1	RCP (CLASS 3)	300	1
Pit 1/3	58.312	0.994	600 x 900 PIT, CLASS C GRATE	Pit 1/3	Pit 4/1	6.499	57.318	57.253	1	RCP (CLASS 3)	300	1
Pit 1/4	57.368	1.025	600 x 900 PIT, CLASS C GRATE	Pit 1/4	Pit 5/1	7.077	56.343	56.272	1	RCP (CLASS 3)	300	1
Pit 1/5	56.654	0.994	600 x 900 PIT, CLASS C GRATE	Pit 1/5	Pit 6/1	6.502	55.66	55.595	1	RCP (CLASS 3)	300	1
Pit 1/6	55.263	0.996	600 x 900 PIT, CLASS C GRATE	Pit 1/6	Pit 7/1	6.5	54.267	54.202	1	RCP (CLASS 3)	300	1
Pit 1/7	54.337	0.995	600 x 900 PIT, CLASS C GRATE	Pit 1/7	Pit 8/1	6.5	53.342	53.277	1	RCP (CLASS 3)	300	1
Pit 1/8	53.575	0.995	600 x 900 PIT, CLASS C GRATE	Pit 1/8	Pit 9/1	6.5	52.58	52.515	1	RCP (CLASS 3)	300	1
Pit 1/9	52.639	0.996	600 x 900 PIT, CLASS C GRATE	Pit 1/9	Pit 10/1	6.501	51.643	51.578	1	RCP (CLASS 3)	300	1
Pit 1/10	50.643	0.9	600 x 900 PIT, CLASS C GRATE	Pit 1/10	Pit 11/1	5.985	49.743	49.668	1.25	RCP (CLASS 3)	300	1
Pit 1/11	55.069	0.9	2 x 600 x 900 PIT, CLASS C GRATE	Pit 1/11	Pit 2/11	5.97	54.169	54.109	1	RCP (CLASS 3)	300	1
Pit 2/11	55.068	0.989	600 x 900 PIT, CLASS C GRATE	Pit 2/11	Pit 3/11	68.954	54.079	48.686	7.82	RCP (CLASS 3)	300	1
Pit 3/11	49.641	0.985	600 x 900 PIT, CLASS C GRATE	Pit 3/11	Pit 4/11	33.45	48.656	46.402	6.74	RCP (CLASS 3)	300	1
Pit 4/11	47.513	1.141	600 x 900 PIT, CLASS C GRATE	Pit 4/11	Pit 5/11	28.835	46.372	44.969	4.87	RCP (CLASS 3)	300	1
Pit 5/11	45.954	1.015	600 x 900 PIT, CLASS C GRATE	Pit 5/11	Pit 6/11	16.879	44.939	44.16	4.62	RCP (CLASS 3)	375	1
Pit 6/11	45.773	1.643	2 x 900 SQ PIT with 600 x 900 CLASS C GRATE	Pit 6/11	Pit 2/1	23.272	44.13	43.012	4.8	RCP (CLASS 3)	375	2
Pit 1/12	49.646	0.9	2 x 600 x 900 PIT, CLASS C GRATE	Pit 1/12	Pit 3/11	5.971	48.746	48.686	1	RCP (CLASS 3)	300	1
Pit 1/13	47.8	1.268	2 x 900 SQ PIT with 600 x 900 CLASS C GRATE	Pit 1/13	Pit 2/13	5	46.532	46.462	1.4	RCP (CLASS 3)	300	1
Pit 2/13	47.53	1.068	600 x 900 PIT, CLASS C GRATE	Pit 2/13	Pit 4/11	5.975	46.462	46.402	1	RCP (CLASS 3)	300	1
Pit 1/14	46.59	0.567	600 x 900 PIT, CLASS C GRATE	Pit 1/14	Pit 2/14	10	46.023	45.523	5	uPVC (SN8)	225	1
Pit 2/14	46.423	0.93	600 x 900 PIT, CLASS C GRATE	Pit 2/14	Pit 3/14	8.679	45.493	45.059	5	uPVC (SN8)	225	1
Pit 3/14	45.959	0.93	600 x 900 PIT, CLASS C GRATE	Pit 3/14	Pit 5/11	5.972	45.029	44.969	1	RCP (CLASS 3)	300	1
Pit 1/15	46.8	1.797	2 x 900 SQ PIT with 600 x 900 CLASS B GRATE	Pit 1/15	Pit 2/15	4.254	45.003	44.808	4.58	RCP (CLASS 3)	375	1
Pit 2/15	45.772	0.994	600 x 900 PIT, CLASS C GRATE	Pit 2/15	Pit 6/11	6.501	44.778	44.16	9.51	RCP (CLASS 3)	375	2
Pit 1/16	56.674	0.993	600 x 900 PIT, CLASS C GRATE	Pit 1/16	Pit 2/16	6.5	55.681	55.616	1	uPVC (SN8)	225	1
Pit 2/16	56.678	1.092	600 x 900 PIT, CLASS C GRATE	Pit 2/16	Pit 3/16	57.514	55.586	54.473	1.936	uPVC (SN8)	225	1
Pit 3/16	56.102	1.659	600 x 900 PIT, CLASS C GRATE	Pit 3/16	Pit 4/16	29.217	54.443	54.151	1	uPVC (SN8)	225	1
Pit 4/16	55.631	1.51	600 x 900 PIT, CLASS C GRATE	Pit 4/16	Pit 5/16	47.024	54.121	53.066	2.244	uPVC (SN8)	225	1
Pit 5/16	54.128	1.092	600 x 900 PIT, CLASS C GRATE	Pit 5/16	Pit 6/16	30.007	53.036	51.871	3.882	RCP (CLASS 3)	300	1
Pit 6/16	52.93	1.089	600 x 900 PIT, CLASS C GRATE	Pit 6/16	Headwall	8.62	51.841	51.755	1	RCP (CLASS 3)	300	1
Pit 1/17	55.789	0.891	2 x 900 SQ PIT with 600 x 900 CLASS C GRATE	Pit 1/17	Pit 2/17	6.417	54.898	54.833	1	uPVC (SN8)	225	1
Pit 2/17	55.785	0.982	600 x 900 PIT, CLASS C GRATE	Pit 2/17	Pit 3/17	23.52	54.803	54.803	1	uPVC (SN8)	225	1
Pit 3/17	56.099	1.561	900 SQ PIT, CLASS C GRATE	Pit 3/17	Pit 3/16	6.5	54.538	54.538	1	uPVC (SN8)	225	1
Pit 1/18	55.486	0.901	600 x 900 PIT, CLASS C GRATE	Pit 1/18	Pit 4/16	6.576	54.585	54.151	6.605	uPVC (SN8)	225	1
Pit 1/19	54.124	0.993	600 x 900 PIT, CLASS C GRATE	Pit 1/19	Pit 5/16	6.5	53.131	53.066	1	uPVC (SN8)	225	1

PRELIMINARY - NOT FOR CONSTRUCTION

Job No. X1304672 TB_A4H_X1304672_TB_A4H
 Plot Date: 05/12/2019 11:58:05
 User: hnamir
 Cad File: T:\935001\Drawings\AutoCAD\DWG\Civil\20\DA\DC6_06_Schedule_Pit_Schedule_Sheet1.dwg

DO NOT SCALE FROM DRAWINGS. CHECK & VERIFY ALL DIMENSIONS & LEVELS BEFORE COMMENCEMENT OF ANY WORK.
THIS DRAWING IS NOT TO BE COPIED IN PART OR WHOLE WITHOUT WRITTEN PERMISSION FROM WARREN SMITH AND PARTNERS.

REVISION	AMENDMENT	DATE	REVISION	AMENDMENT	DATE
1	DEVELOPMENT APPLICATION	06/12/19			

CLIENT
CATHOLIC CEMETERIES BOARD

PROJECT
NEPEAN GARDENS

PREPARED BY



Warren Smith & Partners Pty Ltd
Level 9, 233 Castlereagh St, Sydney 2000 NSW Australia
02 9299 1312 wsp@warrensmith.com.au
www.warrensmith.com.au ABN 36 300 430 126

CONSULTING ENGINEERS
 ■ Hydraulic Services ■ Fire Services
 ■ Civil Services ■ Sydney Water Accredited Water Servicing Co-ordinator and Designer



SERVING THE CONSTRUCTION INDUSTRY SINCE 1981.

TITLE
STORMWATER PIT SCHEDULE SHEET 1

SCALE AS SHOWN	DRAWN M.T.	DESIGNED N.Q.	CHECKED L.Sh.	APPROVED M.C.
JOB No. 5936001		DRAWING No. C6.06		ISSUE 1
DATE DECEMBER 2019		STATUS DEVELOPMENT APPLICATION		

