



23/06/2021 2:34:31 PM

Revision	Description	Date
A	Development Application Issue	23/06/2021

**NOTES : DEVELOPMENT APPLICATION**

**1. DESIGN RESOLUTION**

- The drawings represent general architectural intent for the purpose of this development application only.
- The internal layout is shown indicatively and is subject to further design development.
- The dimensions shown are general only and are subject to further design resolution.
- Location of car park entry point is general only and will be confirmed and dimensioned at later stage.
- The size and position of privacy screens, louvres is indicative and shown in open and closed positions.
- Please refer to Landscape drawings for Landscape component (shown indicatively only in this set)
- Location & sizes of plant, equipment, service areas and service risers on drawings is general and indicative only, and does not include minor elements, such as vent pipes, flues, aerials, etc.

**2. GRAPHIC PRESENTATION**

Colours presented on drawings are generic only and indicative of the architectural design intent.

**3. EXISTING STRUCTURES AND SERVICES**

Extent and location of existing and proposed neighbouring structures and services is according to the available survey information and will need to be verified on site at later stage.

**THIS DRAWING IS TO BE PRINTED IN COLOUR**

It is intended that the drawings only represent the visual design of the work. Any technical details are for outline purposes only. The Contractor/Manufacturer must separately provide all necessary shop drawings or calculations for compliance with any relevant industry, safety standards or Australian Standards, regulations or by-laws. Dimensions are to be checked on site, any discrepancies are to be referred to Custance Associates Pty Ltd, in writing, prior to proceeding. Use written dimensions only. Do not use scaled dimensions. Check for latest revision issue. ©Copyright of this drawing is vested with Custance Associates Pty Ltd. Nominated Architects: Craig Shelsler 8259

Consultants	Client
<p><b>PROJECT MANAGER</b> PACT PM www.pact.com.au</p> <p><b>LANDSCAPE ARCHITECT</b> TAYLOR BRAMMER www.taylorbrammer.com.au</p> <p><b>STRUCTURAL &amp; CIVIL ENGINEER</b> HENRY &amp; HYMAS www.henryandhymas.com.au</p> <p><b>MECHANICAL / ELECTRICAL / LIFTS /</b> JHA www.jhaservices.com.au</p> <p><b>HYDRAULIC ENGINEER</b> ACOR www.acor.com.au</p>	<p><b>PLANNER</b> BBC CONSULTING PLANNERS bbcplanners.com.au</p> <p><b>BCA / PCA / ACCESS CONSULTANTS</b> FORMIGA1 www.formiga1.com.au</p> <p><b>FIRE ENGINEER</b> INNOVA SERVICES PTY LTD www.innovaservices.com.au</p> <p><b>TRAFFIC ENGINEER</b> TTPA www.ttpa.com.au</p> <p><b>BUSHFIRE CONSULTANTS</b> BUILDING CODE &amp; BUSHFIRE HAZARD SOLUTIONS PTY LTD</p>

Client

**Opal HealthCare**

SYDNEY  
Level 11/420 George Street,  
Sydney, NSW 2000  
Australia

PH. (02) 8241 1600  
www.opalhealthcare.com.au

Architect

**CUSTANCE**

Strategy  
Urban Design  
Architecture  
Interior Design

SYDNEY  
Level 3, 87-89 Foveaux St,  
Sunny Hills, NSW 2010  
Australia

PH. (02) 9051 0177  
www.custance.com.au  
Nominated Architect: Craig Shelsler (NSW #8259)

**DA ISSUE**

NORTH

SCALE @ A1  
1:500  
0 12.5 25M

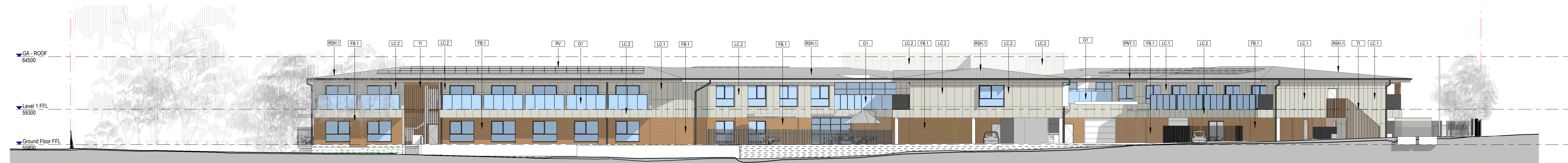
Drawn: PJ  
Checked: RW  
Scale: As indicated @ A1

Project OPAL ST CLAIR RACF		
Project Address 94-100 EXPLORERS WAY, ST CLAIR NSW 2759		
Sheet Title NOTIFICATION SITE PLAN		
Project No. 3362	Sheet No. DA20.01	Revision A

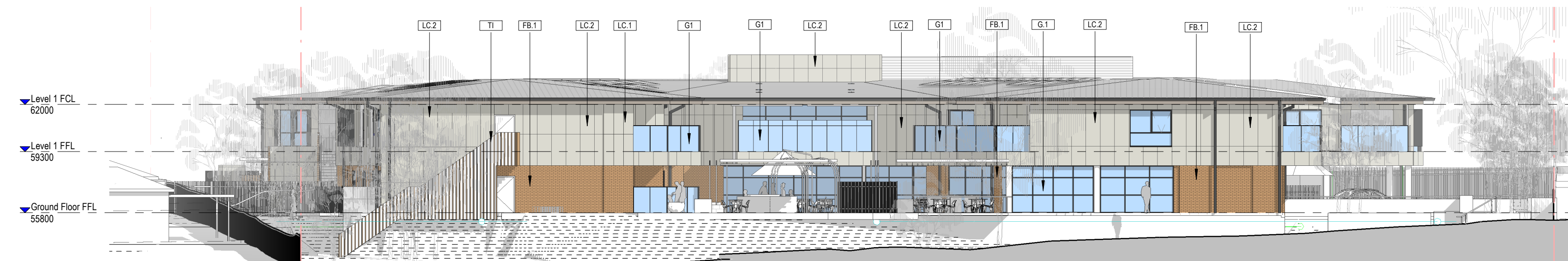




1 DA NOTIFICATION ELEVATION (EAST)  
SK002 1 : 200



2 DA NOTIFICATION ELEVATION (WEST)  
SK002 1 : 200



3 DA NOTIFICATION ELEVATION (NORTH)  
SK002 1 : 200



4 DA NOTIFICATION ELEVATION (SOUTH)  
SK002 1 : 200

CODE LEGEND	
Key Value	Keynote Description
FB.1	BOWRAL "PICTON" PR SIMILAR FACE BRICK
G.1	CLEAR GLASS
G.1	CLEAR GLASS
LC.1	COLORBOND FLAT METAL CLADDING('DUNE' OR SIMILAR)
LC.2	PAINTED FC PANEL CLADDING ('SURFMIST' OR SIMILAR)
LC.3	WEATHERBOARD CLADDING - (RESENE 'APRICOT WHITE' OR SIMILAR)
PNT.1	COLORBOND MONUMENT WINDOW HOODS; GUTTERS; DOWNPIPES
PV	PHOTOVOLTAIC PANEL
RS.1	ROOF SHEETING TYPE 1
TI	TIMBER LOOK ALUMINIUM BATTENS

Revision	Description	Date
A	Development Application Issue	23/06/2021

**NOTES : DEVELOPMENT APPLICATION**

1. DESIGN RESOLUTION  
 • The drawings represent general architectural intent for the purpose of this development application only.  
 • The internal layout is shown indicatively and is subject to further design development.  
 • The dimensions shown are general only and are subject to further design resolution.  
 • Location of car park entry point is general only and will be confirmed and dimensioned at later stage.  
 • The size and position of privacy screens, louvres is indicative and shown in open and closed positions.  
 • Please refer to Landscape drawings for Landscape component (shown indicatively only in this set)  
 • Location & sizes of plant, equipment, service areas and service risers on drawings is general and indicative only, and does not include minor elements, such as vent pipes, flues, aerials, etc.

2. GRAPHIC PRESENTATION  
 Colours presented on drawings are generic only and indicative of the architectural design intent.

3. EXISTING STRUCTURES AND SERVICES  
 Extent and location of existing and proposed neighbouring structures and services is according to the available survey information and will need to be verified on site at later stage.

**THIS DRAWING IS TO BE PRINTED IN COLOUR**

It is intended that the drawings only represent the visual design of the work. Any technical details are for outline purposes only. The Contractor/Manufacturer must separately provide all necessary shop drawings or calculations for compliance with any relevant industry, safety standards or Australian Standards, regulations or by-laws. Dimensions are to be checked on site, any discrepancies are to be referred to Custance Associates Pty Ltd, in writing, prior to proceeding. Use written dimensions only. Do not use scaled dimensions. Check for latest revision issue. ©Copyright of this drawing is vested with Custance Associates Pty Ltd Nominated Architects: Craig Shelsler 8259

<b>PROJECT MANAGER</b> <b>PACT PM</b> www.pact.com.au  <b>LANDSCAPE ARCHITECT</b> <b>TAYLOR BRAMMER</b> www.taylorbrammer.com.au  <b>STRUCTURAL &amp; CIVIL ENGINEER</b> <b>HENRY &amp; HYMAS</b> www.henryandhymas.com.au  <b>MECHANICAL / ELECTRICAL / LIFTS /</b> <b>JHA</b> www.jhaservices.com.au  <b>HYDRAULIC ENGINEER</b> <b>ACOR</b> www.acor.com.au	<b>PLANNER</b> <b>BBC CONSULTING PLANNERS</b> bbcplanners.com.au  <b>BCA / PCA / ACCESS CONSULTANTS</b> <b>FORMIGA1</b> www.formiga1.com.au  <b>FIRE ENGINEER</b> <b>INNOVA SERVICES PTY LTD</b> www.innovaservices.com.au  <b>TRAFFIC ENGINEER</b> <b>TPA</b> www.tpa.com.au  <b>BUSHFIRE CONSULTANTS</b> <b>BUILDING CODE &amp; BUSHFIRE</b> <b>HAZARD SOLUTIONS PTY LTD</b>
---	--

Client

**Opal HealthCare**  
 SYDNEY  
 Level 11/420 George Street,  
 Sydney, NSW 2000  
 Australia  
 PH. (02) 8241 1600  
 www.opalhealthcare.com.au

Architect

**CUSTANCE**  
 Strategy  
 Urban Design  
 Architecture  
 Interior Design  
 SYDNEY  
 Level 3, 87-89 Foveaux St,  
 Sunny Hills, NSW 2010  
 Australia  
 PH. (02) 9051 0177  
 www.custance.com.au  
 Nominated Architect: Craig Shelsler (NSW #8259)

DA ISSUE

NORTH

SCALE @ A1  
 1:100  
 0 2.5 5M

Drawn PJ  
 Checked RW  
 Scale As indicated @ A1

Project  
**OPAL ST CLAIR RACF**

Project Address  
**94-100 EXPLORERS WAY, ST CLAIR  
 NSW 2759**

Sheet Title  
**NOTIFICATION ELEVATIONS**

Project No. 3362  
 Sheet No. **DA20.02**  
 Revision **A**