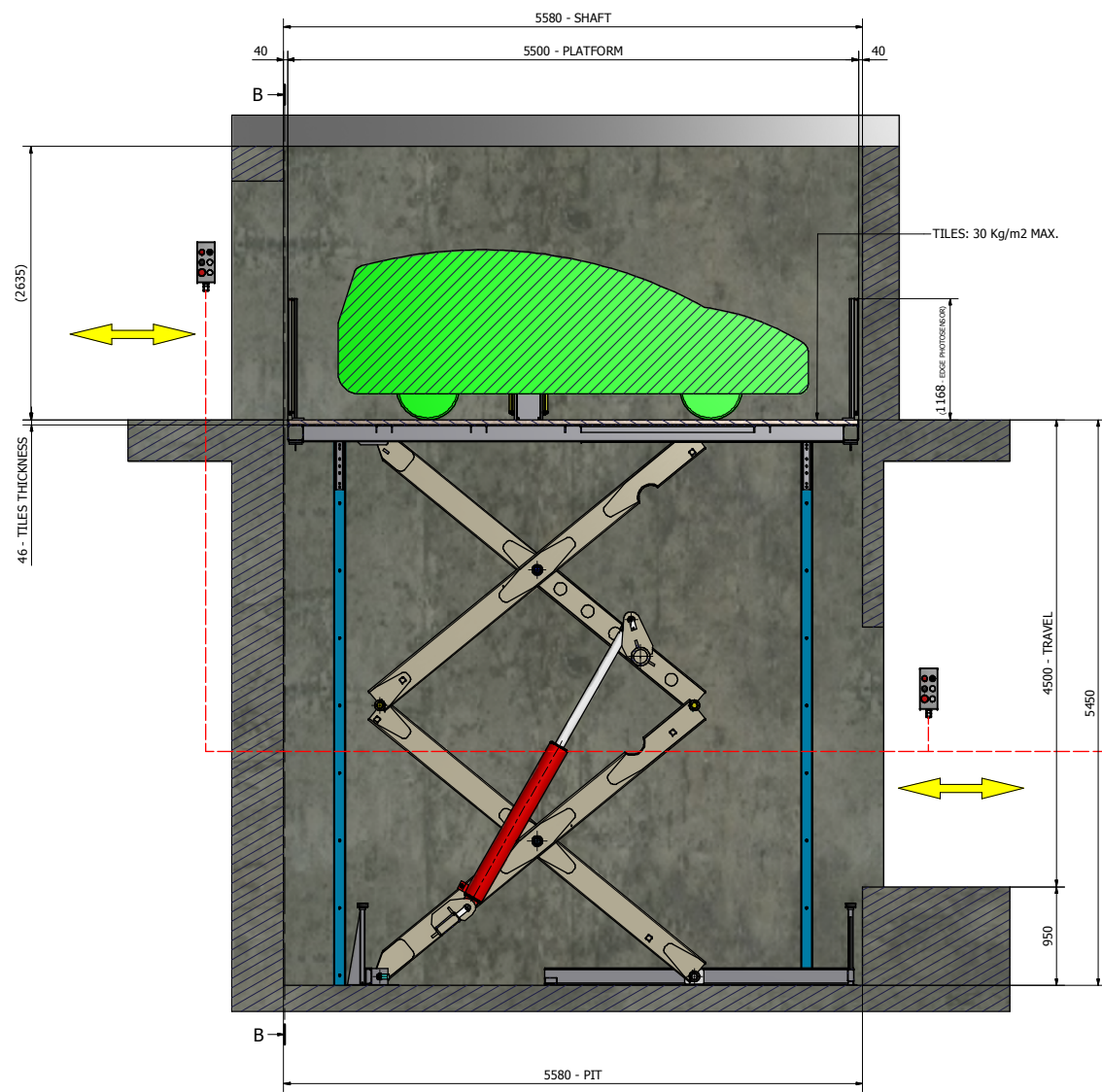
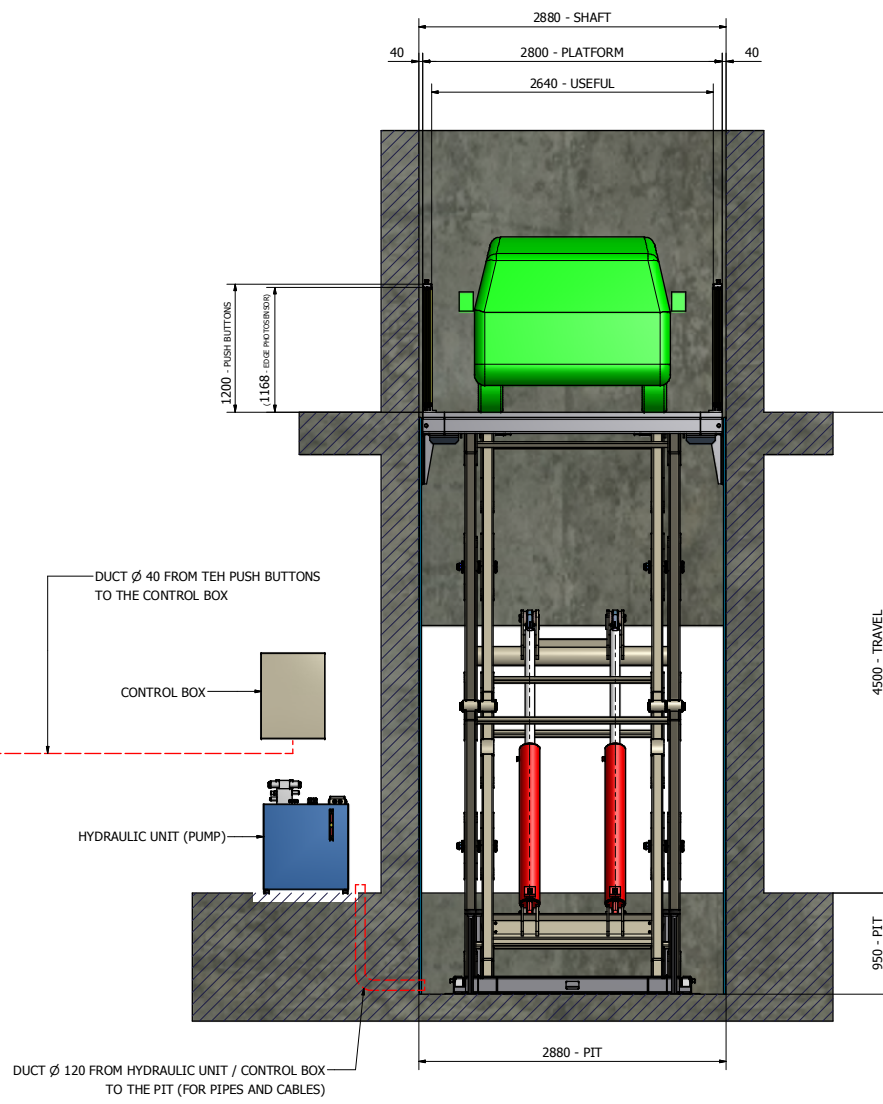


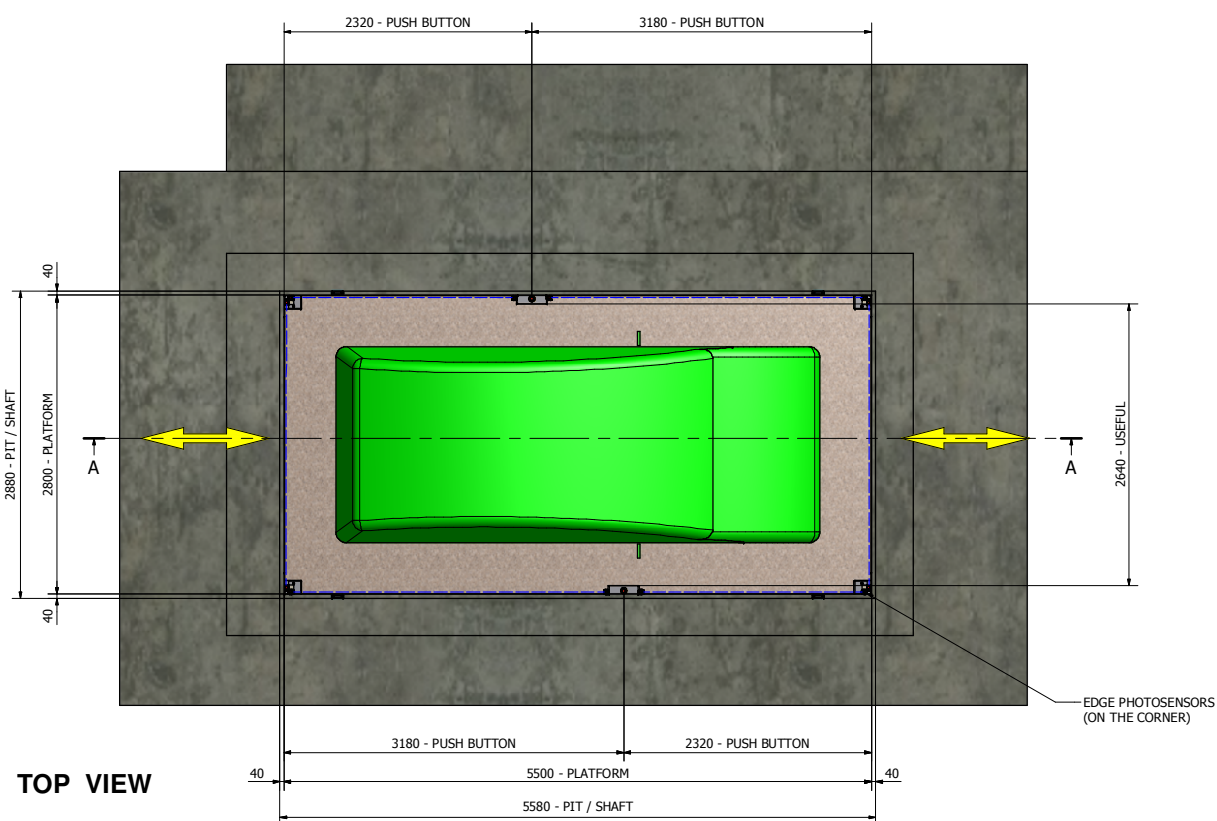
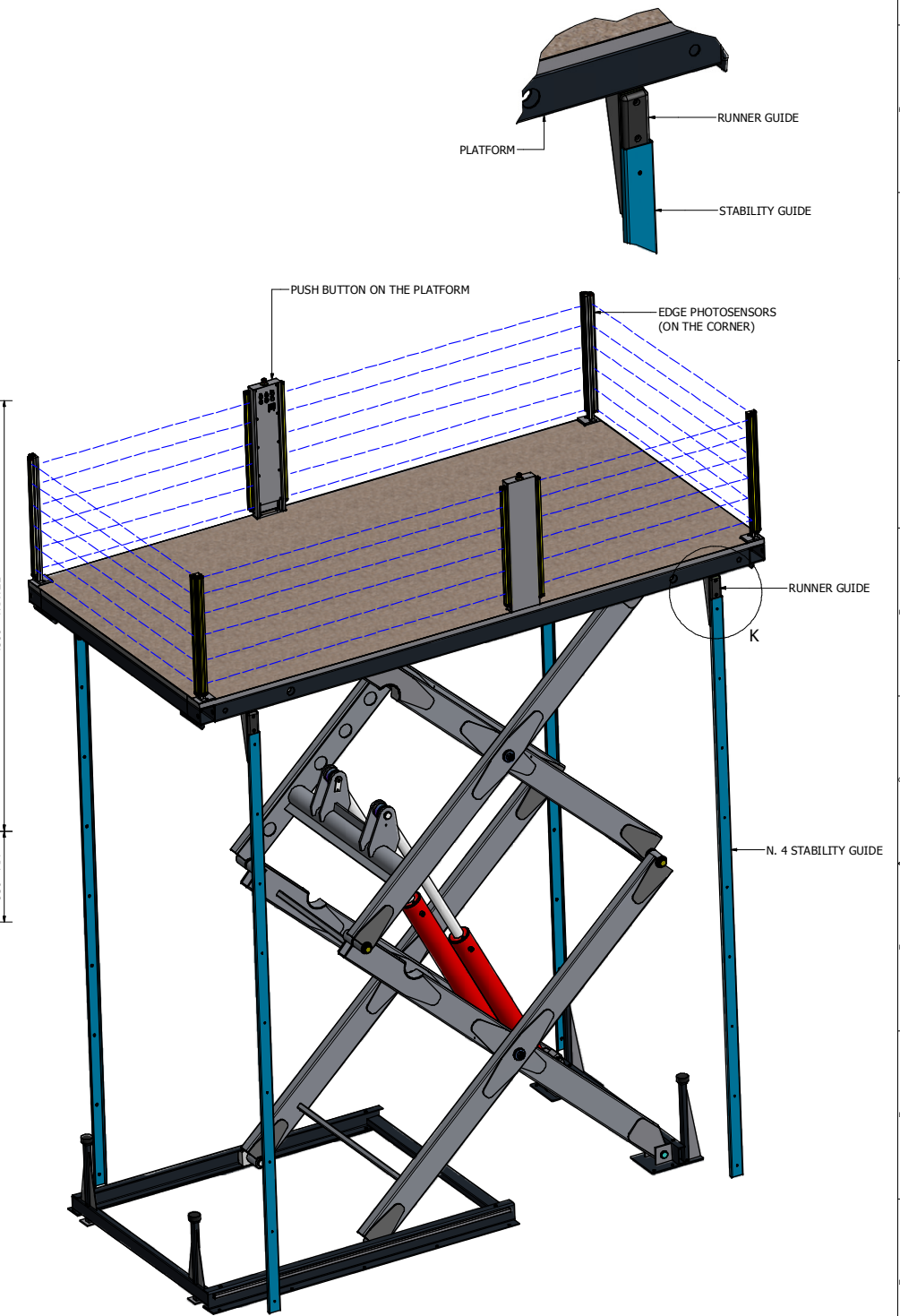
SECTION A - A



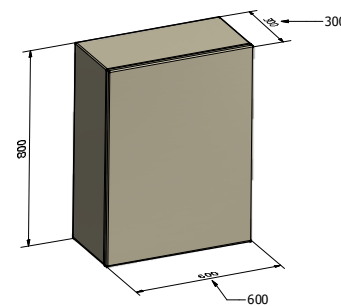
SECTION B - B



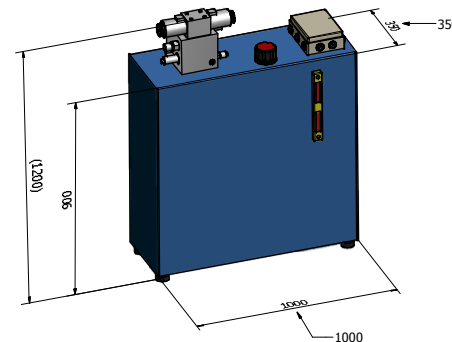
"K" STABILITY GUIDE DETAIL



CONTROL BOX DIMENSIONS



POWER UNIT DIMENSIONS



**GIOVE 30 - MIRIMAR AVENUE
MAN ON BOARD**

C - 3393

CAPACITY = 3000 Kg.
SPEED UP = 15 cm/sec
SPEED DOWN = 15 cm/sec
POWER UNIT = 15 Kw - 400 Volt
FINISH: HOT DEEP GALVANIZED
RED RAL 3001 (CYLINDERS)

REV "1" 17-04-2018

	Via Belfiore, 119 - 00254 Roma (RM) Tel: 06-4140841 - Fax: 06-4131312 E-mail: info@sofaspace.it - www.sofaspace.it P.IVA n° 01470100001	Trattamenti: AD 17/04/2018 MM MM
	Codice: C-3393 Descrizione: GIOVE 30 - Man on Board - MIRIMAR AVENUE Dimensione: GRUPPO ASSEMBLATO Revisione: 1 Foglio: 1 / 1	Data: 17/04/2018 Partita: 1 Disegnato: N/A Approvato: