

Proposed Construction of a Two Storey Dual Occupancy Development at 41 Sunburst Drive, Caddens. NSW

Waste Management Plan

December 2021



South Elevation

INDEX

1. OUTLINE OF PROPOSAL & FLOOR PLAN
2. NO DEMOLITION
3. CONSTRUCTION OF GROUND & FIRST FLOOR
4. PROPOSED ONGOING WASTE MANAGEMENT

2. OUTLINE OF PROPOSAL

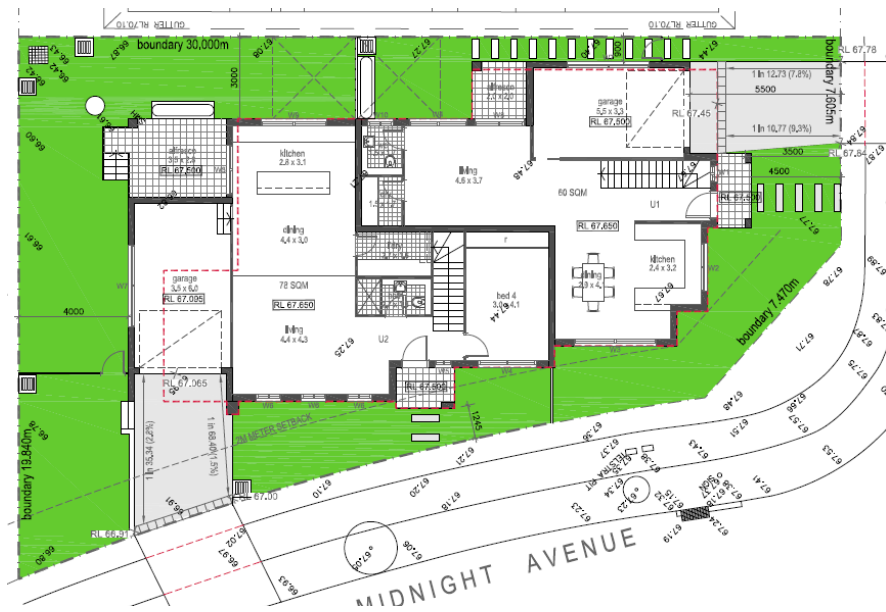
Site Address: 41 Sunburst Drive, Caddens

Applicant: Zedcorp Developments

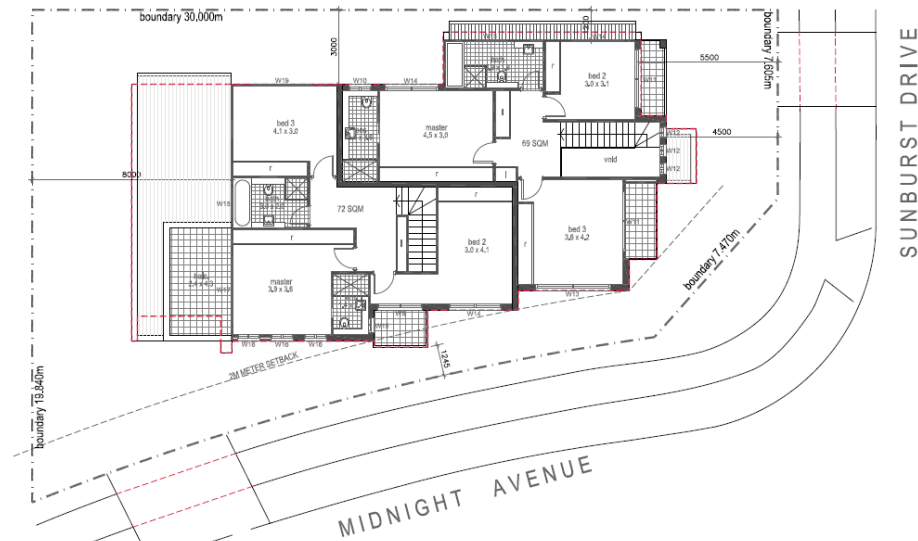
Brief description of proposal: construction of a two storey dual occupancy development

The details provided on this form are for the intentions of managing waste relating to this project.

Date:09.12.2021



Ground Floor



First Floor

3. NO DEMOLITION

This is the stage with the greatest potential for waste minimization, particularly in Sydney where there are high levels of development, relatively high tipping charges and where alternative quarry materials are located on the outskirts.

The application considers if it is possible to re-use existing building materials, or parts therefore, for the proposed use. With careful on-site sorting and storage and by staging work programs, it is possible to re-use many materials, either on-site or off. Instead of simply pulling down a building, this waste management plan encourages the practice of recycling on site. This could require a number of colour-coded or clearly labelled bins on-site rather than one size fits all.

- Location of on-site storage space for materials (for re-use) and containers for recycling and disposal will be directed on site by the builder
- Vehicle access to the site and to storage and container areas will be directed on site by the builder

MATERIALS ON-SITE		DESTINATION		
Type of Material	Estimated Vol. (m3) or Area (m2)	RE-USE AND RECYCLING		DISPOSAL Proposed contractor/ landfill site
		ON-SITE	OFF-SITE	
Excavation material	Nil	Keep and re-use topsoil for landscaping. Store on-site. Use some behind retaining walls	To Kari & Ghossayn Land Fill (excess excavation)	Kari & Ghossayn
Green waste	Nil	Separated. Some chipped and stored on-site for re-use on landscaping.	Remainder to Aust. Native Landscapes P/L Badgerys Creek	Badgerys Creek
Bricks	Nil	Clean and re-use lime mortar bricks for fill	Concrete mortar bricks to Brandown Crushing & Recycling Co.	Brandown
Concrete	Nil	Crush concrete for temporary driveway	Concrete to Brandown Crushing & Recycling Co.	Brandown
Timber – hardwood / pine	Nil	Re-use for formwork and studwork. Chip remainder for use in landscaping.	To stockpile at Brandown transfer station, by approved waste contractor	Brandown
Plasterboard	Nil	Break-up and remove from site	To Brandown Recycling Facilities	Brandown
Metals – zinc / aluminium	Nil	Nil	To Selland Parker Metal Recyclers	Metal Recyclers
Tiles, glass, plastics (inc. roof tiles)	Nil	Crush tiles for temporary driveway	Remainder to Brandown Recycling Facilities	Brandown
Kitchen cupboards, sink, & stove	Nil	Nil	To Brandown Recycling Facilities	Brandown
Bathtub vanity and closet pan	Nil	Nil	To Brandown Recycling Facilities	Brandown
Asbestos	Nil	Nil	To Kari & Ghossayn Land Fill by approved waste contractor	Kari & Ghossayn

Note: Details of site area to be used for on-site separation, treatment and storage (including weather protection) are to be directed on site by the builder.

4. CONSTRUCTION

The following measures should have been considered when looking to save resources and minimise waste at the construction stage:

- Purchasing Policy – considering measures such as ordering the right quantities of materials and prefabrication of materials where possible;
- Minimising site disturbance, limiting unnecessary works;
- Careful source separation of off-cuts to facilitate re-use, re-sale or efficient recycling; and
- Co-ordination / sequencing of various trades

The allocated Waste Storage and recycling Area can be flexible in size and layout to cater for future needs.

MATERIALS ON-SITE		DESTINATION		
Type of Material	Estimated Vol. (m3) or Area (m2)	RE-USE AND RECYCLING		DISPOSAL
		ON-SITE	OFF-SITE	Proposed contractor/ landfill site
Excavation material	15m3	Covered in section as part of demolition	To Kari & Ghossayn Land Fill (excess excavation)	Kari & Ghossayn
Green waste	Nil	Covered in section as part of demolition	Remainder to Aust. Native Landscapes P/L Badgerys Creek	Nil
Bricks	0.5m ³	Nil	Return to Brick company	Nil
Concrete/Cement	0.5m ³	Nil	Return to concrete plant	Nil
Timber – oregon / pine / timber pallets / particle board finishes	Nil	Nil	Remainder to Aust. Native Landscapes P/L Badgerys Creek	Nil
Plasterboard	1 sheet	Re-use where required	Remainder to Boral Recycling 3 Thackery St, Camellia 2142	Nil
Metals – copper / aluminium	0.5m ³	Nil	Return to plumbing contractor	Nil
Other – electrical fittings, reject trade-ins, PVC plastics, cardboard,etc	Nil	Nil	To Collex Recycling Waste Contractors	Nil

Note: Details of site area to be used for on-site separation, treatment and storage (including weather protection) are to be directed on site by the builder.

5. PROPOSED ONGOING WASTE MANAGMENT

Proposed design of facilities for ongoing waste and recycling management:

TYPE OF WASTE TO BE GENERATED	EXPECTED VOLUME PER WEEK	PROPOSED ON-SITE STORAGE & TREATMENT FACILITIES	DESTINATION
Example: glass, paper, food waste, off cuts, etc	Litre or m3	<ul style="list-style-type: none"> ▪ Waste storage & recycling area ▪ Garbage chute ▪ On-site composting ▪ Compaction equipment 	<ul style="list-style-type: none"> ▪ Recycling ▪ Disposal ▪ Specify contractor
A. RECYCLABLES: 1. Home paper / cardboard waste 2. Glass, aluminium and plastic (bottles) PER UNIT TOTAL	80 litres approx. 40 litres approx. <u>120 litres approx.</u>	120 litre Recycle storage bins for paper, cardboard, glass, plastic and aluminium	Paper / cardboard to recyclers. Glass / aluminium & plastic to be collected by appointed contractor.
B. NON-RECYCLABLES: 1. Foodscraps, etc 2. Other plastics (eg. wrapping) 3. Unrecyclable waste PER UNIT TOTAL	70 litres approx. 30 litres approx. <u>20 litres approx</u> 120 litres approx.	240 Litre Storage bins	To be collected by appointed contractors.
SUMMARY Provide: <ul style="list-style-type: none"> ▪ 1 x 240 litre bin for recycling ▪ 1x 240 litre bin (refuse) 		Provide: <ul style="list-style-type: none"> ▪ 1 x 240 litre recycle bin ▪ 1 x 240 litre refuse bin 	To be collected by appointed contractors.

NOTE: Details of on-site waste management facilities should be constructed or provided for as per plans and specifications, Council requirements & strata plan requirements.