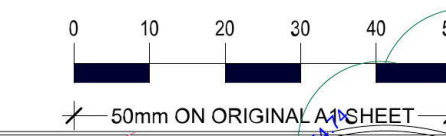
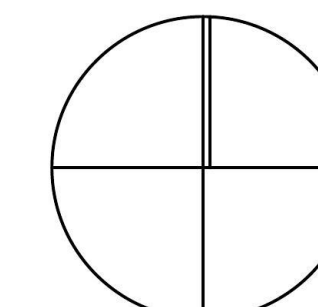


PROJECT NORTH

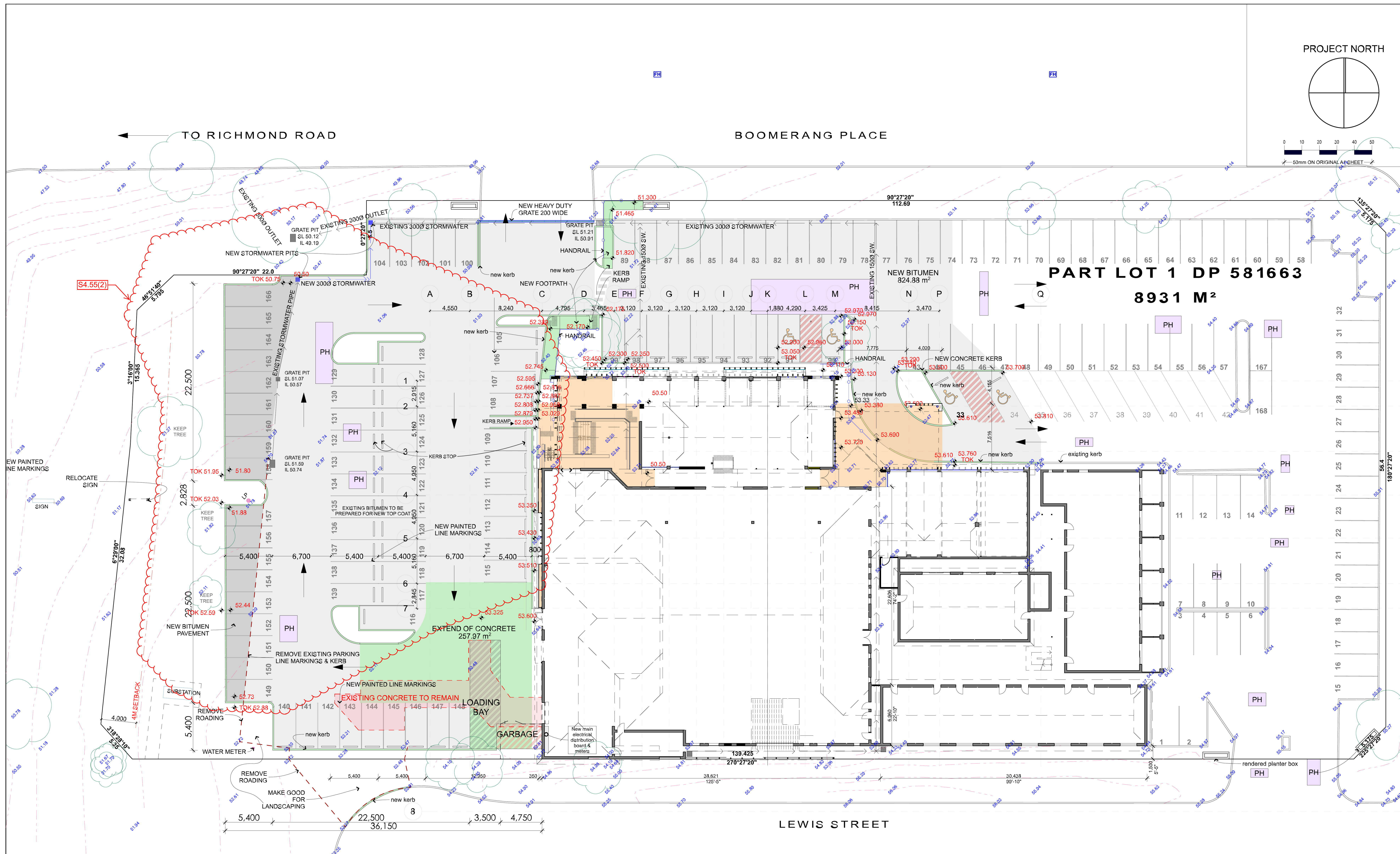


TO RICHMOND ROAD

BOOMERANG PLACE

PART LOT 1 DP 581663
8931 M²

LEWIS STREET



1

SITE PLAN

1:200

ISSUE ID	DATE	REVISION	DESCRIPTION
01	201611	01	ISSUE FOR CONSTRUCTION
02	201707	01	ISSUE FOR CONSTRUCTION
03	201801	01	ISSUE FOR CONSTRUCTION
04	201801	01	ISSUE FOR CONSTRUCTION
05	201801	01	ISSUE FOR CONSTRUCTION
06	201801	01	ISSUE FOR CONSTRUCTION
07	201801	01	ISSUE FOR CONSTRUCTION
08	201801	01	ISSUE FOR CONSTRUCTION
09	201801	01	ISSUE FOR CONSTRUCTION
10	201801	01	ISSUE FOR CONSTRUCTION
11	201801	01	ISSUE FOR CONSTRUCTION
12	201801	01	ISSUE FOR CONSTRUCTION
13	201801	01	ISSUE FOR CONSTRUCTION
14	201801	01	ISSUE FOR CONSTRUCTION
15	201801	01	ISSUE FOR CONSTRUCTION
16	201801	01	ISSUE FOR CONSTRUCTION
17	201801	01	ISSUE FOR CONSTRUCTION
18	201801	01	ISSUE FOR CONSTRUCTION
19	201801	01	ISSUE FOR CONSTRUCTION
20	201801	01	ISSUE FOR CONSTRUCTION
21	201801	01	ISSUE FOR CONSTRUCTION
22	201801	01	ISSUE FOR CONSTRUCTION
23	201801	01	ISSUE FOR CONSTRUCTION
24	201801	01	ISSUE FOR CONSTRUCTION
25	201801	01	ISSUE FOR CONSTRUCTION
26	201801	01	ISSUE FOR CONSTRUCTION
27	201801	01	ISSUE FOR CONSTRUCTION
28	201801	01	ISSUE FOR CONSTRUCTION
29	201801	01	ISSUE FOR CONSTRUCTION
30	201801	01	ISSUE FOR CONSTRUCTION
31	201801	01	ISSUE FOR CONSTRUCTION
32	201801	01	ISSUE FOR CONSTRUCTION
33	201801	01	ISSUE FOR CONSTRUCTION
34	201801	01	ISSUE FOR CONSTRUCTION
35	201801	01	ISSUE FOR CONSTRUCTION
36	201801	01	ISSUE FOR CONSTRUCTION
37	201801	01	ISSUE FOR CONSTRUCTION
38	201801	01	ISSUE FOR CONSTRUCTION
39	201801	01	ISSUE FOR CONSTRUCTION
40	201801	01	ISSUE FOR CONSTRUCTION
41	201801	01	ISSUE FOR CONSTRUCTION
42	201801	01	ISSUE FOR CONSTRUCTION
43	201801	01	ISSUE FOR CONSTRUCTION
44	201801	01	ISSUE FOR CONSTRUCTION
45	201801	01	ISSUE FOR CONSTRUCTION
46	201801	01	ISSUE FOR CONSTRUCTION
47	201801	01	ISSUE FOR CONSTRUCTION
48	201801	01	ISSUE FOR CONSTRUCTION
49	201801	01	ISSUE FOR CONSTRUCTION
50	201801	01	ISSUE FOR CONSTRUCTION
51	201801	01	ISSUE FOR CONSTRUCTION
52	201801	01	ISSUE FOR CONSTRUCTION
53	201801	01	ISSUE FOR CONSTRUCTION
54	201801	01	ISSUE FOR CONSTRUCTION
55	201801	01	ISSUE FOR CONSTRUCTION
56	201801	01	ISSUE FOR CONSTRUCTION
57	201801	01	ISSUE FOR CONSTRUCTION
58	201801	01	ISSUE FOR CONSTRUCTION
59	201801	01	ISSUE FOR CONSTRUCTION
60	201801	01	ISSUE FOR CONSTRUCTION
61	201801	01	ISSUE FOR CONSTRUCTION
62	201801	01	ISSUE FOR CONSTRUCTION
63	201801	01	ISSUE FOR CONSTRUCTION
64	201801	01	ISSUE FOR CONSTRUCTION
65	201801	01	ISSUE FOR CONSTRUCTION
66	201801	01	ISSUE FOR CONSTRUCTION
67	201801	01	ISSUE FOR CONSTRUCTION
68	201801	01	ISSUE FOR CONSTRUCTION
69	201801	01	ISSUE FOR CONSTRUCTION
70	201801	01	ISSUE FOR CONSTRUCTION
71	201801	01	ISSUE FOR CONSTRUCTION
72	201801	01	ISSUE FOR CONSTRUCTION
73	201801	01	ISSUE FOR CONSTRUCTION
74	201801	01	ISSUE FOR CONSTRUCTION
75	201801	01	ISSUE FOR CONSTRUCTION
76	201801	01	ISSUE FOR CONSTRUCTION
77	201801	01	ISSUE FOR CONSTRUCTION
78	201801	01	ISSUE FOR CONSTRUCTION
79	201801	01	ISSUE FOR CONSTRUCTION
80	201801	01	ISSUE FOR CONSTRUCTION
81	201801	01	ISSUE FOR CONSTRUCTION
82	201801	01	ISSUE FOR CONSTRUCTION
83	201801	01	ISSUE FOR CONSTRUCTION
84	201801	01	ISSUE FOR CONSTRUCTION
85	201801	01	ISSUE FOR CONSTRUCTION
86	201801	01	ISSUE FOR CONSTRUCTION
87	201801	01	ISSUE FOR CONSTRUCTION
88	201801	01	ISSUE FOR CONSTRUCTION
89	201801	01	ISSUE FOR CONSTRUCTION
90	201801	01	ISSUE FOR CONSTRUCTION
91	201801	01	ISSUE FOR CONSTRUCTION
92	201801	01	ISSUE FOR CONSTRUCTION
93	201801	01	ISSUE FOR CONSTRUCTION
94	201801	01	ISSUE FOR CONSTRUCTION
95	201801	01	ISSUE FOR CONSTRUCTION
96	201801	01	ISSUE FOR CONSTRUCTION
97	201801	01	ISSUE FOR CONSTRUCTION
98	201801	01	ISSUE FOR CONSTRUCTION
99	201801	01	ISSUE FOR CONSTRUCTION
100	201801	01	ISSUE FOR CONSTRUCTION

Check all dimensions on site. Report any discrepancies to the architect for clarification before commencing work. Do not scale the drawings. Use figured dimensions only. Drawings shall not be used for construction purposes until status shows FOR CONSTRUCTION.

status: **FOR CONSTRUCTION** S4.55, CC

This drawing is copyright and remains the property of Simon Wells Architect and must not be used, copied or reproduced in whole or part except by agreement with Simon Wells Architect.

© 2016 SIMON WELLS ARCHITECT

PH - EXISTING POTHOLES TO BE FIXED

PROPOSED NEW BUILDING

SIMON WELLS ARCHITECT
ARCHITECTS
ABN 69 176 935 634
NSW Architects Registration No 4932

43 Queens Road ASQUITH NSW 2077
PO Box 3065 ASQUITH NSW 2077
t (02) 9477 6312 f (02) 9476 2465
m 0411 199 530 e swells@slp.com.au

client
BRISCOE HOTEL GROUP

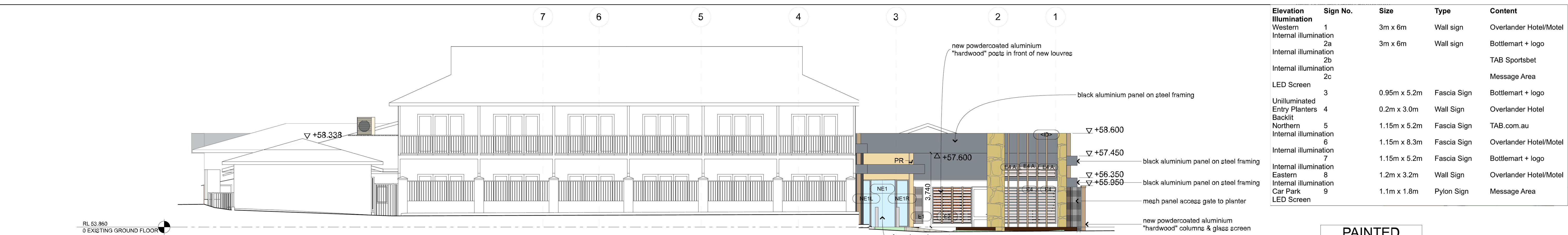
project name
ALTERATIONS & ADDITIONS TO OVERLANDER HOTEL
180 RICHMOND ROAD
CAMBRIDGE GARDENS

SITE PLAN

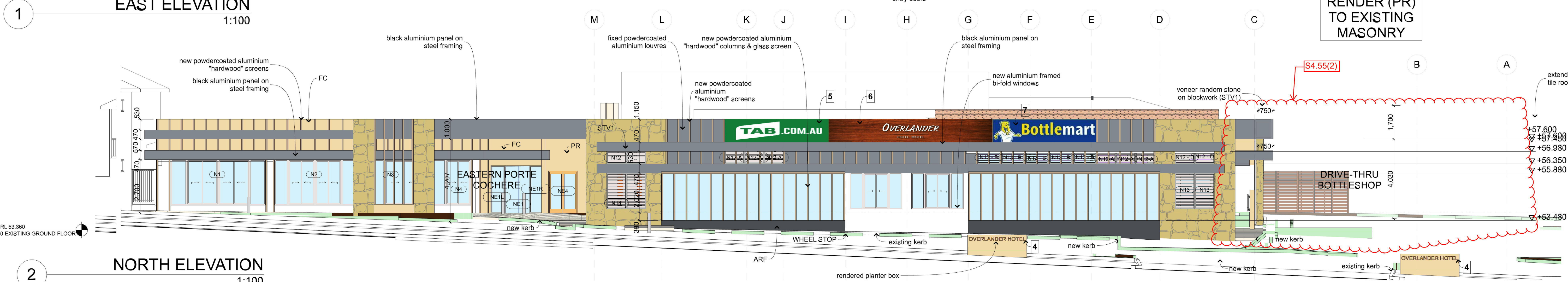
project no: **1025** drawing (issue) #: **1.1(1)**

checked by: **SW** plot date: **11/12/18**

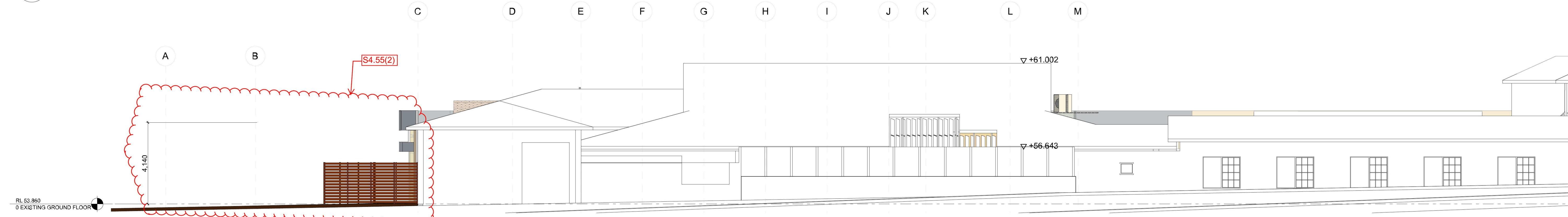
Elevation Illumination	Sign No.	Size	Type	Content
Western	1	3m x 6m	Wall sign	Overlander Hotel/Motel
Internal illumination	2a	3m x 6m	Wall sign	Bottlemart + logo
Internal illumination	2b			TAB Sportsbet
Internal illumination	2c			Message Area
LED Screen	3	0.95m x 5.2m	Fascia Sign	Bottlemart + logo
Unilluminated Entry Planters	4	0.2m x 3.0m	Wall Sign	Overlander Hotel
Backlit Northern	5	1.15m x 5.2m	Fascia Sign	TAB.com.au
Internal illumination	6	1.15m x 8.3m	Fascia Sign	Overlander Hotel/Motel
Internal illumination	7	1.15m x 5.2m	Fascia Sign	Bottlemart + logo
Internal illumination Eastern	8	1.2m x 3.2m	Wall Sign	Overlander Hotel/Motel
Internal illumination Car Park	9	1.1m x 1.8m	Pylon Sign	Message Area
LED Screen				



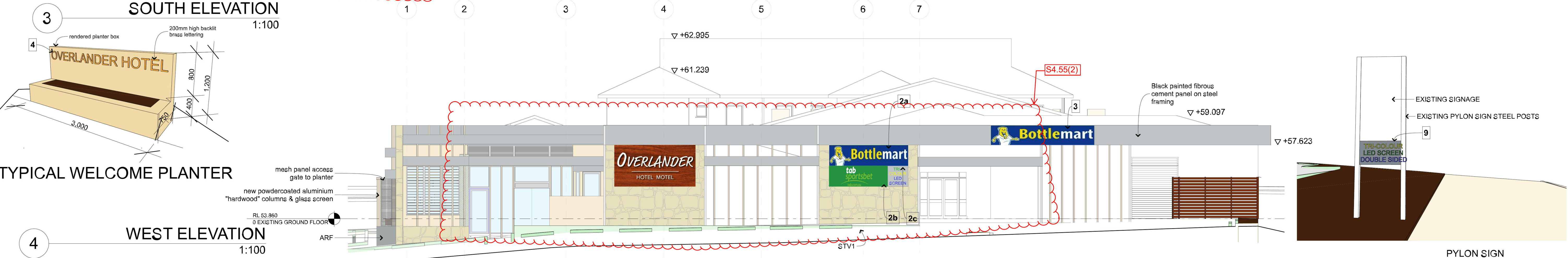
EAST ELEVATION
1:100



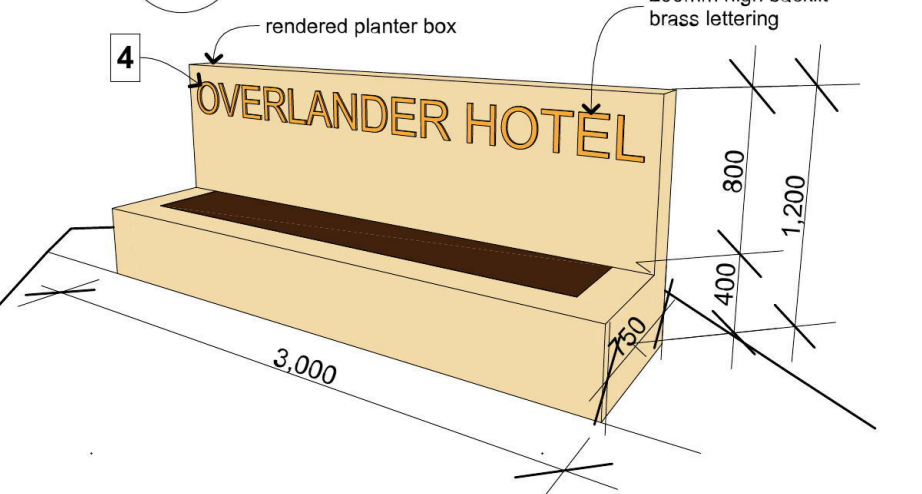
NORTH ELEVATION
1:100



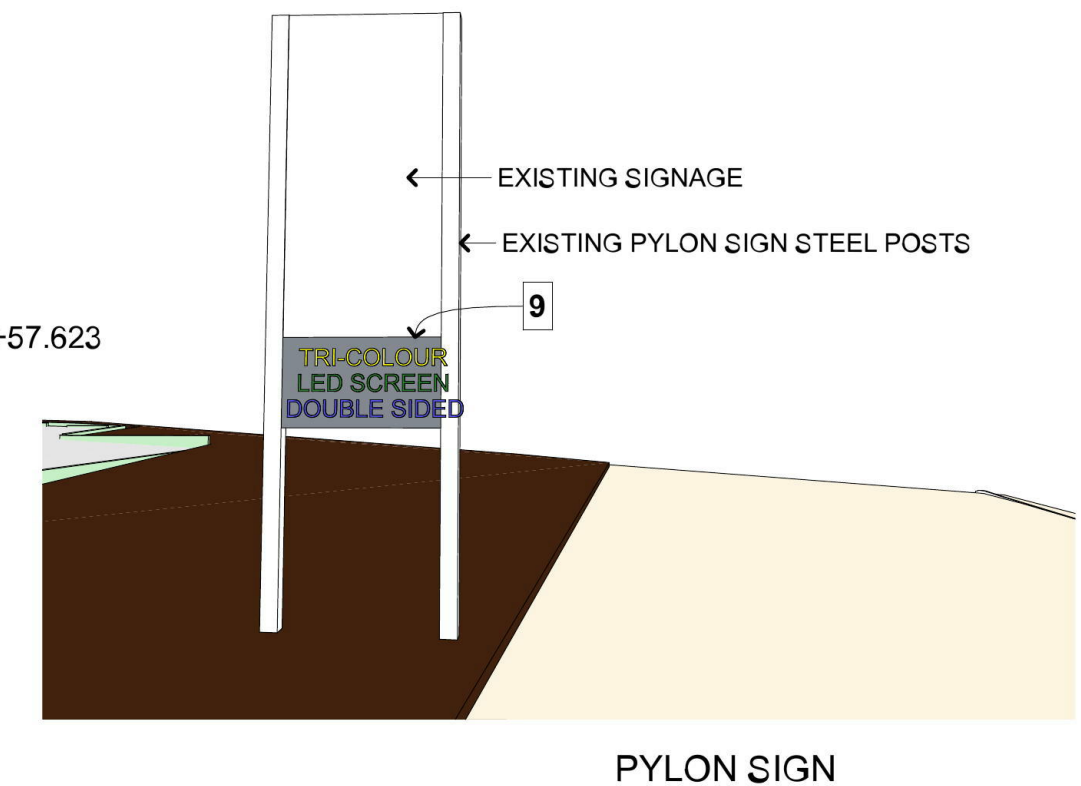
SOUTH ELEVATION
1:100



WEST ELEVATION
1:100



TYPICAL WELCOME PLANTER



PYLON SIGN

ISSUE	ID	DATE	REVISION	DESCRIPTION
01	R1	2017	01	ISSUE
02	R2	2017	02	TENDER REGION
03	R3	2018	03	FOR REVISION
04	R4	2018	04	TENDER DOCUMENTATION
05	R5	2018	05	CONTRACT
06	R6	2018	06	FOR CONSTRUCTION

Check all dimensions on site. Report any discrepancies to the architect for clarification before commencing work. Do not scale the drawings. Use figured dimensions only. Drawings shall not be used for construction purposes until status shows FOR CONSTRUCTION.

status: **FOR CONSTRUCTION** S4.55, CC

This drawing is copyright and remains the property of Simon Wells Architect and must not be used, copied or reproduced in whole or part except by agreement with Simon Wells Architect.

© 2016 SIMON WELLS ARCHITECT

SIMON WELLS ARCHITECT
ARCHITECTS
ABN 69 176 935 634
NSW Architects Registration No 4932

43 Queens Road ASQUITH NSW 2077
PO Box 3065 ASQUITH NSW 2077
t (02) 9477 6312 f (02) 9476 2465
m 0411 199 530 e swells@pip.com.au

client
BRISCOE HOTEL GROUP

project name
ALTERATIONS & ADDITIONS TO OVERLANDER HOTEL
180 RICHMOND ROAD
CAMBRIDGE GARDENS

ELEVATIONS	
project no: 1025	drawing (issue): 4.1(08)
checked by: SW	plot date: 11/12/18