



## MT BLANC PANORAMA 1170 SERIES

### MT BLANC PANORAMA 1170

Architecturally-styled fireplace with excellent heating characteristics. Vertical door for easy and elegant operation.

### MT BLANC PANORAMA 1170 TUNNEL

Extra large glass areas for unlimited view of the fire. 1x vertical door (VD) 1x standard door (SD) for practical operation and seamless installation.

### MT BLANC PANORAMA 1170 TUNNEL ALFRESCO

Especially designed tunnel unit for indoor/outdoor style installations. Cutting edge technology ensures most of the heat is directed inwards, outside surfaces are weather proofed and equipped with lock mechanism.

### RECOMMENDED INSTALLATION SYSTEMS

Natural convection, hot air transfer, heat storage system.

Door dimensions (w h)	1060 / 480 mm
Overall dimensions (w h d)*	1170 / 1500 / 545 mm
Weight*	325 - 390 kg
Flue outlet	9 inch
Air supply duct	1 x 150 mm
Minimum hearth dimensions (w d)	1500 mm / 750 mm
Log length / diameter	60 cm / 45 cm
Average wood consumption	5 kg / hour
Average efficiency EU	80%
Nominal heat output	16 kW
Maximum heat output	30 kW
Door opening system	Lift

\* Due to the model variations within each series these dimensions and v are indicative. Please refer to a technical sheet of an individual model. accurate weights and measurements.

### GLASS-DOOR CONFIGURATIONS





# INSTALLATION SYSTEMS

10



## SKAMOTEC 225 Enclosure - Natural Convection System

### WHEN YOU WANT A QUALITY SYSTEM

Practical for installation into existing open fireplaces. Also great choice for energy efficient or passive buildings  
SKAMOTEC 225 is a high heat resistance calcium silicate board with several advantages.



Quartz-free composition



No hazardous particles released during processing



CE and A1 certified.  
100 % non-combustible material



Easy and fast processing and installation



### BUILDING BOARDS FOR FIREPLACE ENCLOSURES

SKAMOTEC 225 is a lightweight non-combustible board with an excellent R-value, high mechanical strength and low thermal conductivity ideally suited for building fireplace enclosures.

### THE ADVANTAGE OF SKAMOTEC 225

It eliminates the use of traditional frame construction, making it easier and faster to install, for labour-saving efficiency.

### PERFORMANCE BENEFITS

- Non-combustible (class A1)
- Excellent insulation value
- Ease of installation; lightweight and rigid
- Easy to shape with ordinary woodworking tools
- Ideal for renovation additions and new construction
- Environmentally friendly

### THE PERFECT PARTNERS FOR SKAMOTEC 225

The perfect partners to our innovative SKAMOTEC 225 building boards are the SKAMOTEC EASYMIX and SKAMOLEX™ GLUE.

SKAMOTEC EASYMIX is a fast curing cement and fibre based lightweight universal mortar for jointing, filling and surface finishing that requires only the addition of water.

- It has a particularly good workability
- It hardens faster than other similar products
- Easy to install on SKAMOTEC 225

SKAMOLEX™ GLUE is a water-borne adhesion to porous surfaces. It is inorganic and non-cementitious and is used for mounting of SKAMOTEC 225 fireplace building boards.





## AKUMOL Enclosure - Heat Storage System

### AKUMOL - OPTIMAL CHOICE FOR HEAT STORAGE FIREPLACE ENCLOSURE SYSTEMS

AKUMOL is a refractory building material especially developed for construction of heat retaining fireplace enclosures, ovens and cooking appliances.

It boasts special thermal properties which result in optimised transfer and retention of heat over a long period of time.

### FEATURES

- Safe non toxic composition
- High thermal conductivity
- Excellent heat storing properties
- Tough dust free surface
- Optimized for heat tolerant render finishes
- Extremely tough, long lasting fireplace enclosures

### APPLICATIONS

Excellent thermal properties of Akumol make it a material of choice for construction of fireplace enclosures, ovens and other structures exposed to heat.

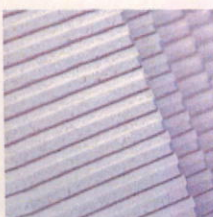
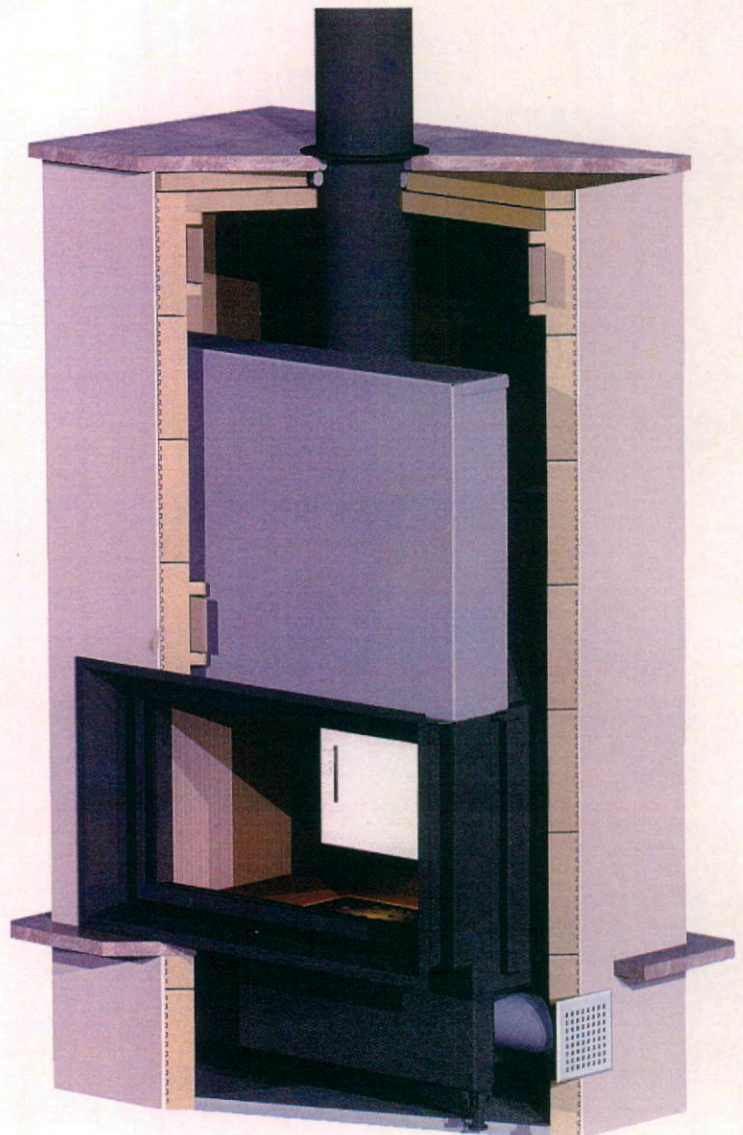
Large choice of profiles allow for freedom of design and ease of construction while maintaining high structural integrity. Heat tolerant, high bond mortar (Rudomal) is used for joining the bricks, (Brulla White) render for finishing the enclosure.

### AKUMOL PROFILES

- Akumol Slab 500x250x40mm
- Akumol Slab Ledge 500x250x40mm
- Akumol Slab Corner 125x250x250x40mm
- Akumol Slab Corner Ledge 125x 250x250x40mm
- Akumol Ledge Filler Plate 220x110x25mm
- Akumol ¼ circle R350/250

### THE PERFECT PARTNERS FOR AKUMOL REFRACTORY BRICKS

- Akumol refractory bricks
- Rudomal 1100 high bond mortar
- Hurdis board
- Brulla heat conductive render





# BUILDING MATERIALS

HIGH TEMPERATURE MORTAR  
RUDOMAL 1100



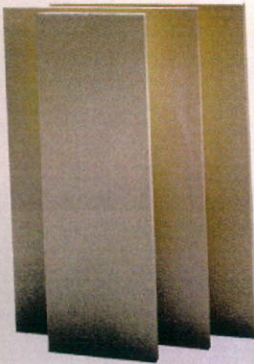
HIGH TEMPERATURE SEALER DAN BRAVEN



FIBREGLASS MESH AND CORNERS



VERMICULITE LINING



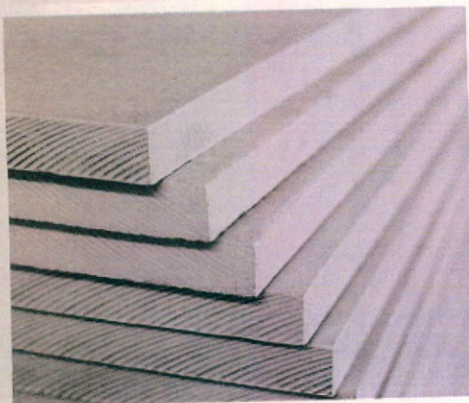
HURDIS BOARDS



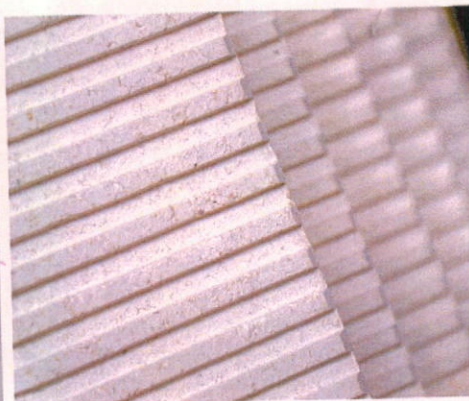
BRULA RENDER



SKAMOTEC 225



AKUMOL REFRACTORY BRICKS



SKAMOLEX EASY MIX RENDER



SKAMOLEX GLUE



SKAMOLEX GLUE FL06



GRID LUFT VENTS

