

RECEIVED
7/10/15
30 JUL 2015
PENRITH CITY COUNCIL

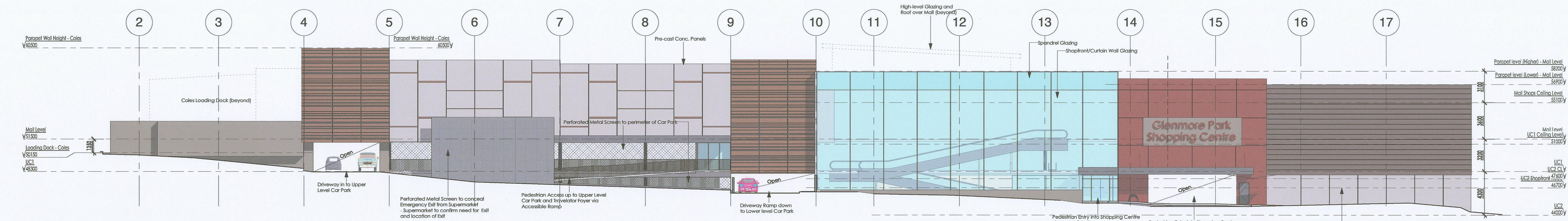
FOR APPROVAL
25.07.15
NOT FOR CONSTRUCTION

1 5. Roof Plan
1:200
BENIER FRANCIS Pty Ltd
17 Prince Patrick Street, Richmond, VIC, 3121
Ph: 0407 829 719

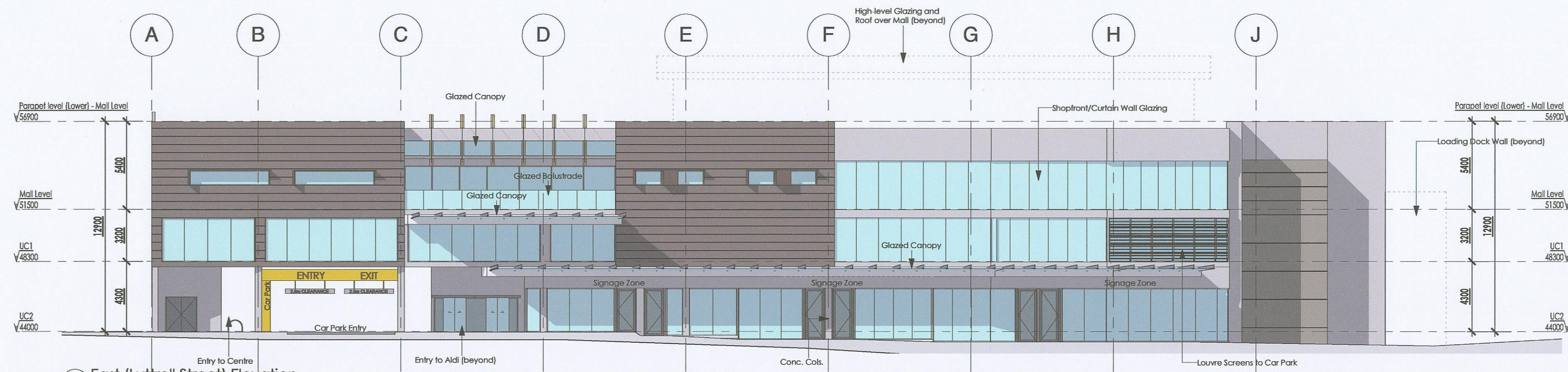
Village Fair Glenmore Pty. Ltd.
Proposed Glenmore Park Shopping
Centre, Penrith, NSW

Revision:	Date:	Description:
TP1	25.07.15	July 2015 Issue
Roof Plan		
Project number	220/14	
Date	May 2014	
Drawn by	PB	
Checked by	JB	
Scale	1:200	

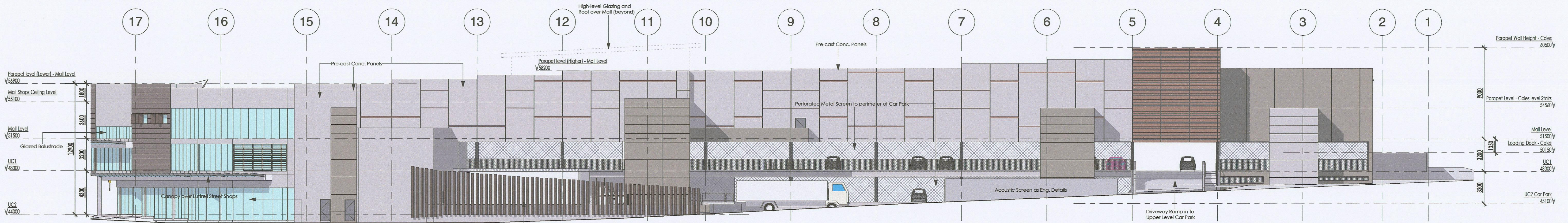
DA204 TP1



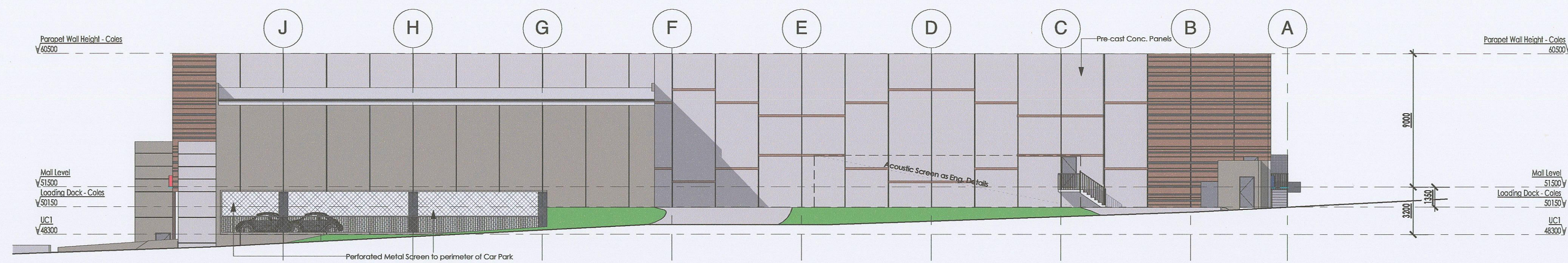
1 South Elevation - Looking from adjacent Car Park
1 : 200



2 East (Luttrell Street) Elevation
1 : 200



3 North (Glenmore Parkway) Elevation
1 : 200



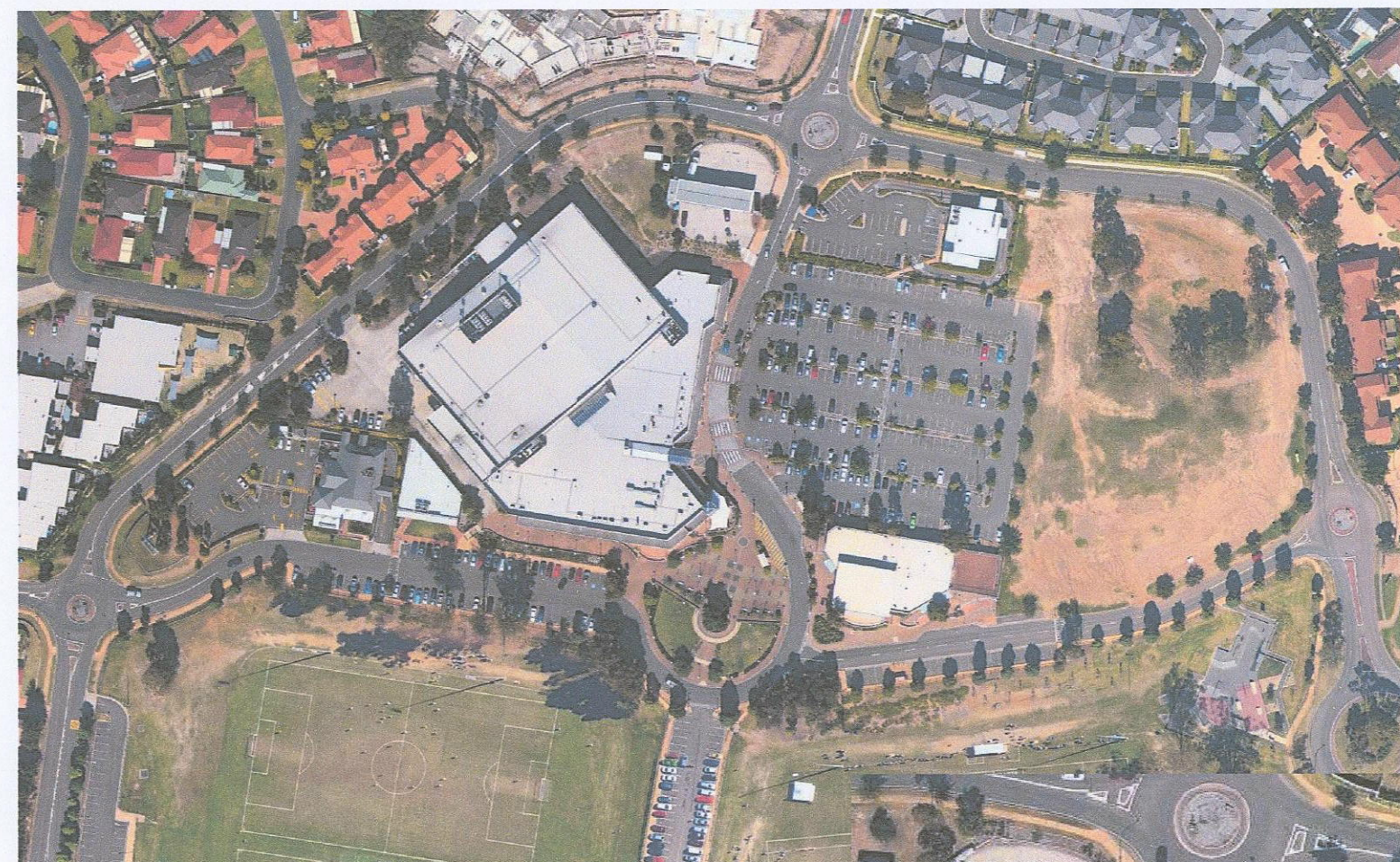
4 West (Glenmore Parkway) Elevation
1 : 200

EXTERNAL FINISHES SCHEDULE

FINISH	LOCATION	COLOUR
EF1 Acrylic paint Finish concrete	Coles Supermarket main walls	Dulux Dieskau RG2C1
EF2 Acrylic paint Finish concrete	Coles Supermarket loading dock walls	Dulux Green Fog P18B4
EF3 Acrylic paint Finish concrete with horizontal "Barcode" recesses	Car Park entries, north & south facades	Dulux Spanish Style P10D6 with Black Barcode recesses
EF4 Acrylic paint Finish concrete	Main mall external blades	Dulux Daintree P32B7
EF5 Acrylic paint Finish concrete	Expressed fire stairs	Dulux Green Fog P18B4
EF6 Acrylic paint Finish concrete	Alfresco walls all sides	Dulux Bleaches
EF7 Composite metal faced cladding panels expressed joints	Above main pedestrian south entry	Symonite Tangerine
EF8 Perforated open weave metal panels	Open sided carparking	Dulux Duralloy Plantation 88378
EF9 Luttrell Street Façade "Boxes" and Southeast Façade (UC1 & above)	South and east elevations	Symonite Storm Grey
EF10 Composite metal faced cladding panels expressed joints	Carpark entries/exits weather canopies	Dulux Duralloy Plantation 88378
EF11 Glazing transparent glass shade 1 glazing	East façade, rooftop atrium, south façade	Viridian Neutral 59 clear
EF12 Glazing transparent glass shade 2 glazing	East façade spandrel panels	Viridian Neutral 59 opaque
EF13 Glazing transparent glass shade 2 glazing	East façade entry office glazing	Viridian Neutral 59 clear
EF14 Powdercoated aluminium glazing framing	East façade, south façade glazing	Dulux Berry Grey Powdercoat 88362
EF15 Acrylic paint finish CFC sheeting	Shopfronts bulkheads east façade	Dulux Oyster Linen P16B3
EF16 Corporate Signage	As noted	
EF17 Centre Signage	As noted	
EF18 Recycled timber verticals non 250mmsq	As noted	
EF19 Composite metal faced cladding panels expressed joints	Rooftop atrium	

Concrete generally refers to Pre-cast Concrete Panels 180mm nominal thickness walls, vertical expressed joints horizontal banding where noted in elevation

PROPOSED GLENMORE PARK SHOPPING CENTRE 2014



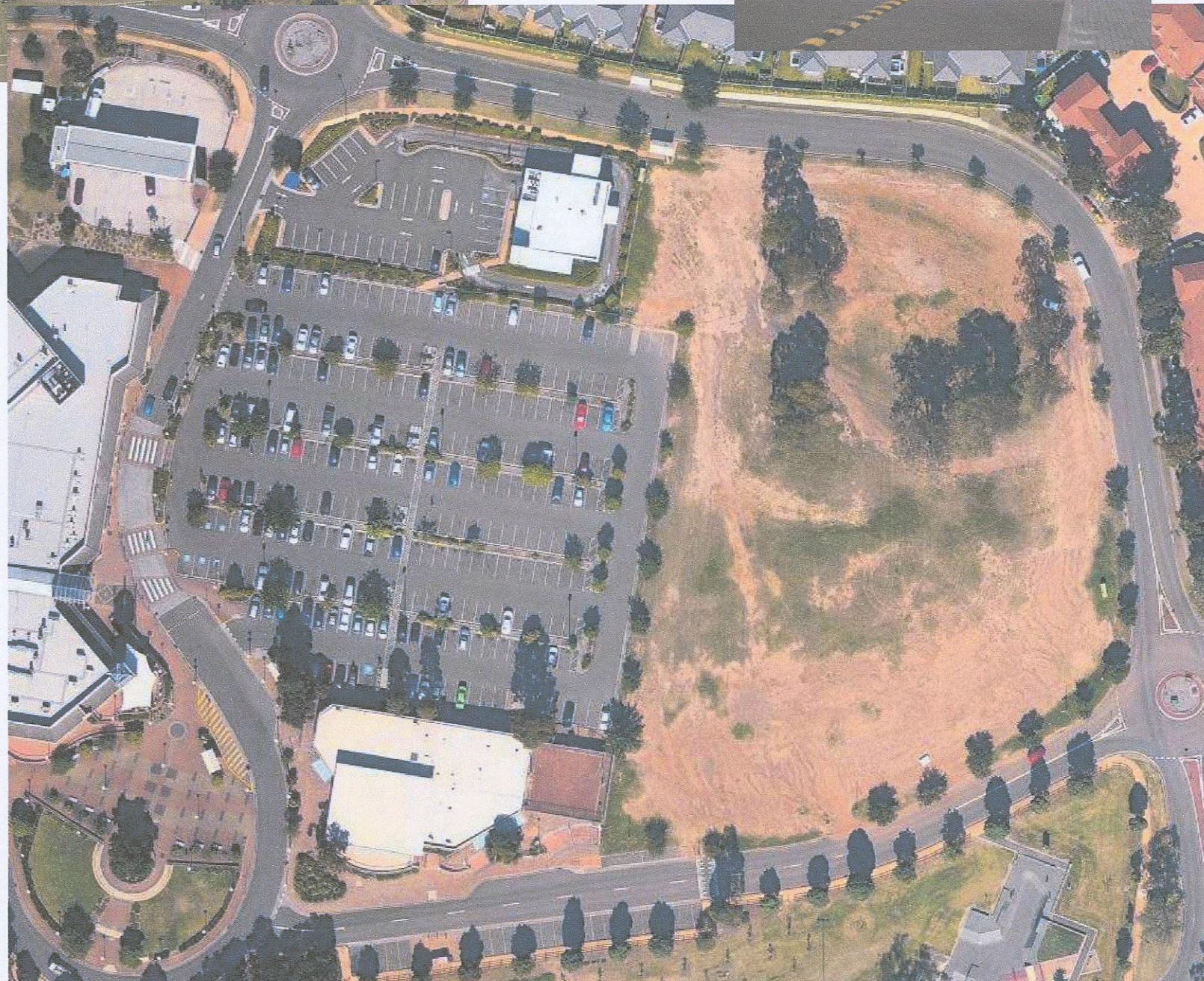
Aerial view of Glenmore park 2014



Luttrell Street towards Eastern Terrace, Community Centre on the right



Rear of Community Centre viewed from the at grade carpark



Aerial view of north end of Glenmore park 2014 - at grade carpark and greenfield site for new centre



Views from Town Terrace towards the Eastern Terrace, and the at grade car park



Various views from the east playing fields, towards Eastern terrace.



Street elevation of the northern residential area.



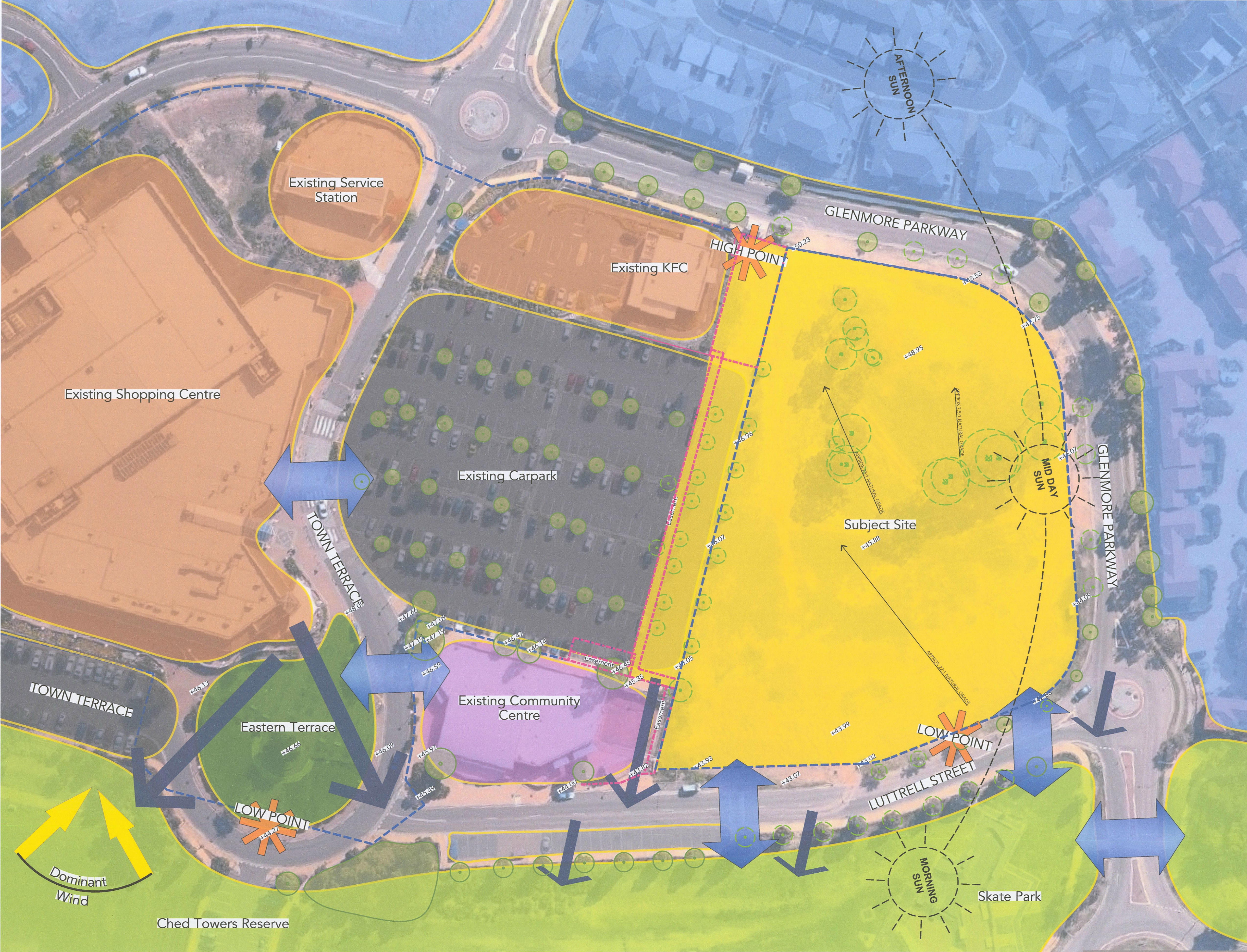
Various views from the northern residential of the Greenfield site.

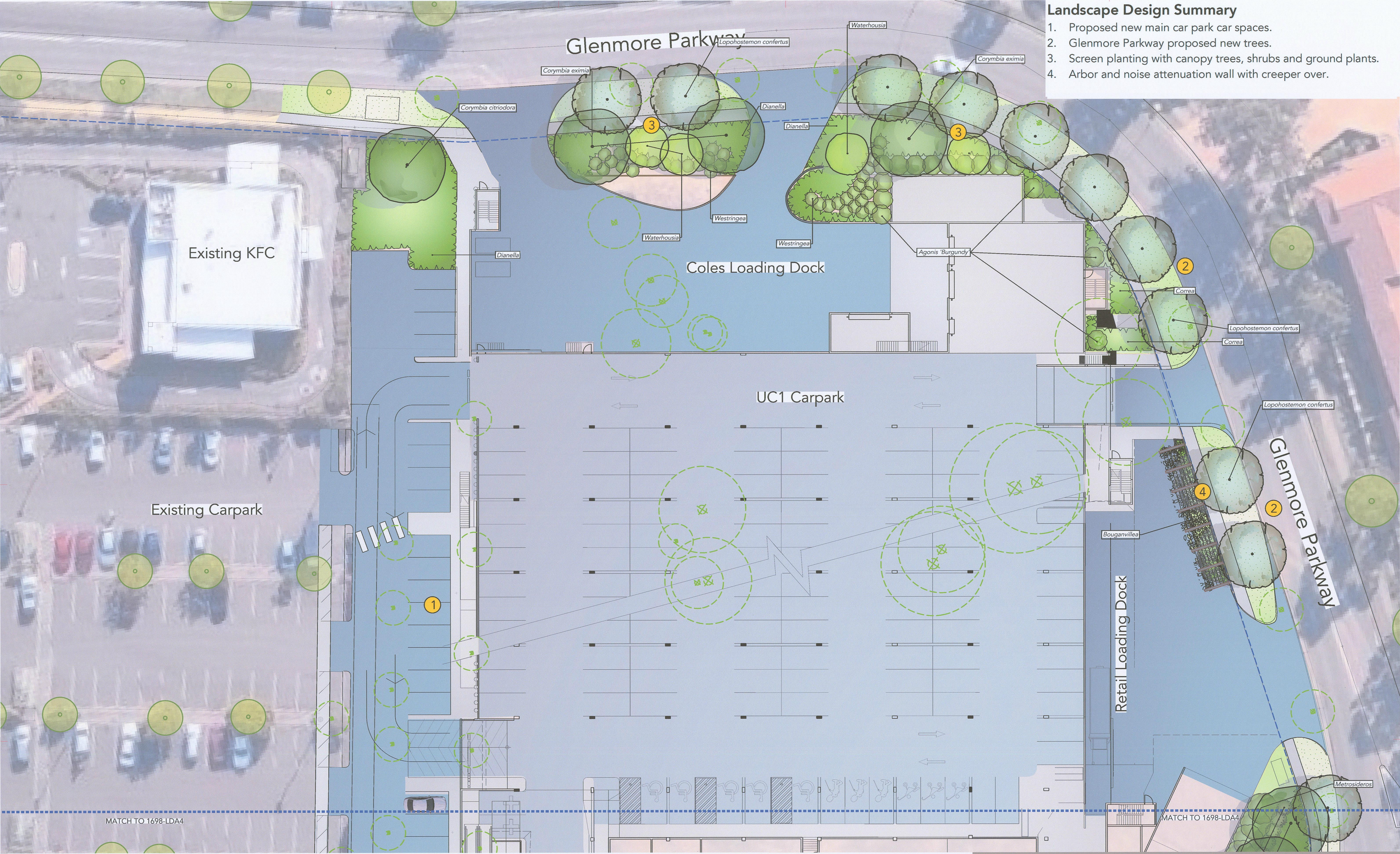


Various views of the Eastern terrace.



FOR APPROVAL
25.07.15
NOT FOR CONSTRUCTION





- Landscape Design Summary**
1. Proposed new main car park car spaces.
 2. Glenmore Parkway proposed new trees.
 3. Screen planting with canopy trees, shrubs and ground plants.
 4. Arbor and noise attenuation wall with creeper over.

Issue	Date	Issue/Revision Description
P1	02-05-14	Preliminary Issue
P2	07-05-14	Preliminary Issue
P3	20-05-14	Preliminary 3
A	30-05-14	Preliminary Issue
B	09-09-14	Forecourt
C	03-01-15	Council comments
D	31-03-15	Street trees
E	27-04-15	Street trees + car exit

Landscape Concept Legend

Existing tree to be retained

Existing tree to be removed

Proposed evergreen trees

Proposed deciduous trees

Proposed shrubs

Proposed tussocks

Proposed groundcover

Proposed climber

Proposed lawn

Proposed segmental unit paving

Proposed public pedestrian lighting

Proposed direction of rise

Proposed Finished Surface Level

Proposed indicative plant species

CONCEPT ONLY
Not for construction

Client
Village Fair Glenmore Park Pty Ltd

Designed SW
Drawn SW
Approved SW

Scale 1:200
Print Date 27/04/2015
Sheet Size A1
Sheet No. 5 of 7

Job
Proposed Glenmore Park Shopping Centre Development Application

Title
Landscape DA Coles Loading Dock Level

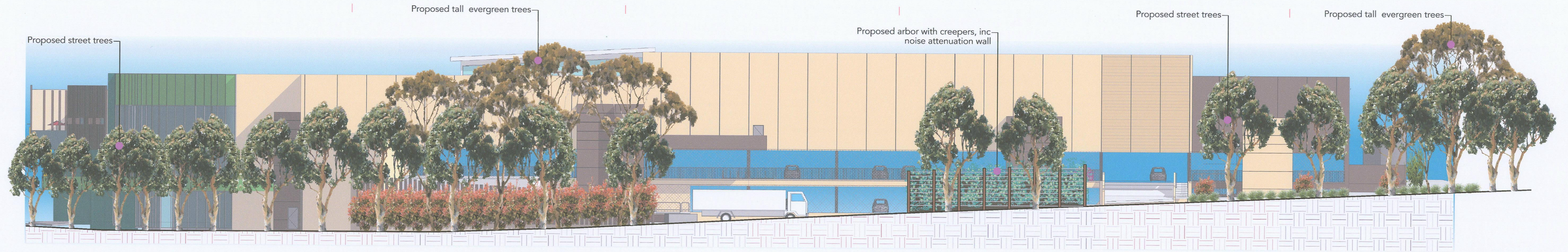
Drawing No.
1698-LDA5

Issue
E

WALLBRINK LANDSCAPE ARCHITECTURE

T 031 9589 7941
609 Balcombe Rd, Black Rock 3193
www.wallbrink.com.au

Document Set ID: 6757670
Version: 1, Version Date: 30/07/2015



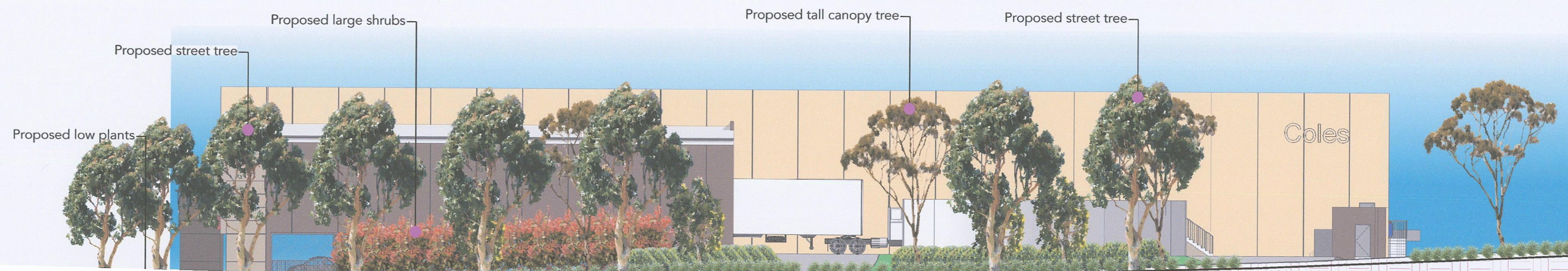
Landscape Elevation
North Elevation 1:200



Landscape Elevation
South (Carpark) Elevation 1:200



Landscape Elevation
East (Luttrell Street) Elevation 1:200



2/2/15
A
6/7/15
A