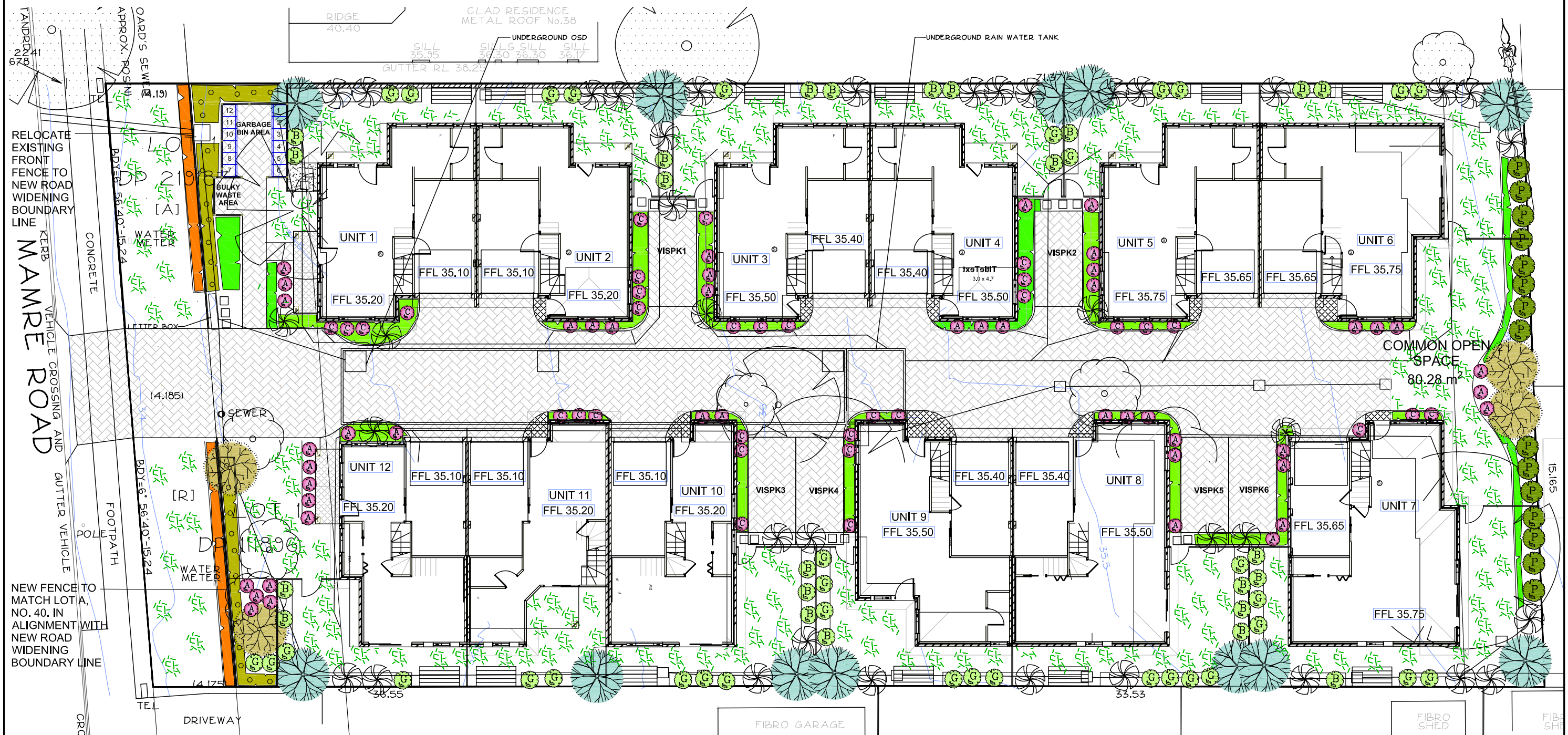


# LANDSCAPE CONCEPT PLAN



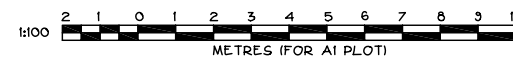
## LEGEND

- GROUND COVER (TYPE A)
- GROUND COVER (TYPE B)
- HEDGE
- SCREEN TREE OR SHRUB  
P - LILLY PILLY "PINNACLE"
- FEATURE SHRUB  
G - GREVILLEA  
B - BANKSIA
- FEATURE SHRUB  
A - ACACIA  
C - CALLISTEMON
- FEATURE SHRUB  
LILLY PILLY "CASCADE"

- CANOPY TREE  
WATERGUM
- CANOPY TREE  
TUCKEROO
- TURF BUFFALO "PALMETTO"  
OR "SIR WALTER"
- CLOTHES LINE
- TIMBER OR BRICK EDGE
- MASONRY RETAINING WALL
- LARGE FORMAT PAVERS IN  
DECORATIVE PEBBLE MULCH

- TILED OR PAVED  
AREA
- FEATURE FINISHED  
CONCRETE DRIVEWAY
- EXISTING TREES  
TO REMAIN AND BE PROTECTED
- EXISTING TREES  
TO BE REMOVED

FOR DETAILS, SPECIES AND NOTES SEE SHEET 3



F		
E		
D		
C		
B	UNITS REVISED	4/5/21
A	FIRST ISSUE	18/12/20
No.	AMENDMENT	DATE

**Bio Engineered Solutions Pty. Ltd.**

Landscape design and Environmental Management  
3 TERRYMONT RD WARRIMOO, 2774  
EMAIL: klc\_nsk@dx.com.au  
A.B.N. 83 104965219  
PH: (02) 4753 6614



DESIGNED K.N.  
DRAWN K.N.  
CHECKED \_\_\_\_\_  
APPROVED \_\_\_\_\_ DATE \_\_\_\_\_

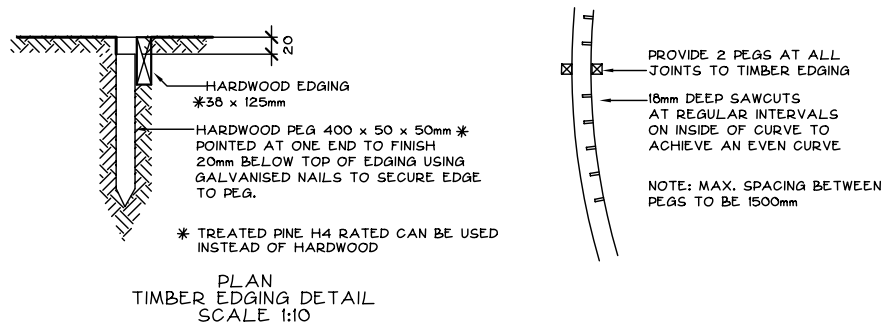
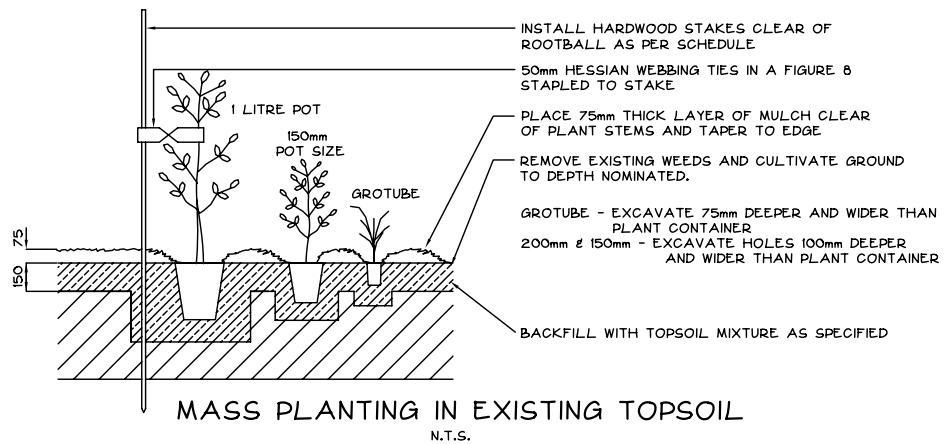
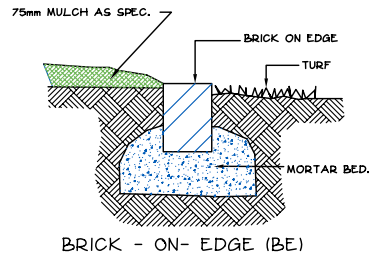
SCALES:  
1:100

CLIENT:  
V HOLMES PTY LTD

PROPOSED SEPP 2009 AFFORDABLE  
HOUSING DEVELOPMENT  
40-42 MAMRE ROAD, ST MARYS  
LANDSCAPE CONCEPT PLAN

PLAN No.  
**1885LAN2 B**  
FILE No.  
1885LAN2  
SHEET 2 OF 3 SHEETS

# DETAILS / NOTES



## INDICATIVE SPECIES LIST

BOTANICAL NAME	COMMON NAME	MATURE HEIGHT	POT SIZE	APPROX NUMBERS
GROUND COVER (TYPE A)				
<i>Liriope muscari</i>	Lily Turf	40-50cm	150mm	150
GROUND COVER (TYPE B)				
<i>Tulbaghia violacea</i>	Society Garlic	30-40cm	150mm	55
HEDGE				
<i>Murraya paniculata</i>	Orange Jessamine	1.5-2.5m	200mm	40
SCREEN TREES & SHRUBS				
<i>Syzygium "Pinnacle"</i>	Lilly Pilly	5-6m	200mm	15
FEATURE SHRUB				
<i>Grevillea "Robyn Gordon"</i>	Grevillea	1-2m	200mm	34
<i>Syzygium "Cascade"</i>	Weeping Lillypilly	2-3m	200mm	37
<i>Callistemon "Little John"</i>	Dwarf Callistemon	1m	200mm	32
<i>Acacia cognata "Mini Cog"</i>	Weeping Acacia	1-1.2m	200mm	47
<i>Banksia spinulosa "Dwarf Red"</i>	Dwarf Banksia	50-60cm	200mm	24
CANOPY TREE				
<i>Cupania anacardioides</i>	Tuckeroo	8-10m	45 litre	4
<i>Tristania laurina "Luscious"</i>	Water Gum	8-10m	45 litre	12

## PLANTING NOTES

GROUND COVER TYPE "A" TO BE PLANTED AT 2 - 3 PER SQM  
GROUND COVER TYPE "B" TO BE PLANTED AT 0.4m CENTRES  
HEDGE TO BE PLANTED AT 0.7m CENTRES

## NOTES

- HARDWOOD STAKES TO BE 38 x 38 x 1800
- AN APPROVED SLOW RELEASE PELLET TYPE FERTILISER HAVING AN NPK RATIO OF 16:2:13.1 EQUIVALENT TO OSMOCOTE 12 - 14 MONTH SLOW RELEASE FERTILISER APPLIED AT THE RATE SPECIFIED BY THE MANUFACTURER SHALL BE USED
- PROPOSED TURF AREA SHOWN, TO BE FERTILISED WITH A NPK RATIO OF 3:2:4:3 SIMILAR TO No 17 LAWN FOOD AT THE RATE SPECIFIED BY THE MANUFACTURER
- ALL GARDEN AREAS TO BE FILLED WITH APPROVED TOP SOIL AT MINIMUM 150mm DEPTH
- ALL TURFED AREAS TO HAVE A MIN. OF 50mm OF APPROVED TOP SOIL PLACED PRIOR TO TURFING
- TOPSOIL SHOULD CONFORM TO AS 4419 "SOILS FOR LANDSCAPING AND GARDEN" AND TO BE SUITABLE FOR NATIVE PLANT GROWTH WITH LOW PHOSPHORUS CONTENT, CONTAINING ORGANIC MATTER AND FREE FROM STONES OR OTHER MATERIAL EXCEEDING 25mm IN ANY DIMENSION.
- IT IS THE CONTRACTORS RESPONSIBILITY TO CHECK AND ADJUST SOIL pH AS REQUIRED
- IN ALL GARDEN AREAS, EXISTING SOIL TO BE DEEP RIPPED TO 200mm AND CULTIVATED TO 100mm
- IN ALL TURFED AREAS, EXISTING SOIL TO BE CULTIVATED TO 75mm
- WATERING REGIME. THE FIRST MONTH AFTER PLANTING IS THE CRITICAL TIME FOR WATERING. THE PLANTS REQUIRE HEAVY WATERING EVERY 3 DAYS, 50mm OF WATER PER WEEK AS A MINIMUM SHOULD BE ADOPTED AS A GENERAL GUIDE
- MULCH PLANTING BEDS TO A MINIMUM OF 50-75mm AS REQUIRED MULCH TO BE COURSE GRADE HARDWOOD MULCH CONFORMING TO AS 4454 "COMPOSTS, SOIL CONDITIONERS AND MULCHES"
- DECORATIVE PEBBLE MULCH COULD BE USED IN AREAS BORDERING DRIVEWAYS & AREAS SUBJECT TO ONSITE DETENTION
- IF DECORATIVE MULCH IS USED NEXT TO GARDEN BEDS IN REAR AND SIDES OF UNITS, A CONTRASTING PEBBLE MULCH OR HARDWOOD MULCH TO BE USED WITHIN THE BEDS
- EXCESS TOPSOIL GENERATED BY THE DEVELOPMENT CAN BE USED TO MOUND UP PLANTING BEDS IN SPECIFIED AREAS

F		
E		
D		
C		
B	PLANT NUMBERS REVISED	4/5/21
A	FIRST ISSUE	18/12/20
No.	AMENDMENT	DATE

**Bio Engineered Solutions Pty. Ltd.**

Landscape design and Environmental Management

3 TERRYMONT RD  
WARRIMOO, 2774

EMAIL: klc\_nrk@dx.com.au

A.B.N. 83 104965219  
PH: (02) 4753 6614



DESIGNED .K.N.  
DRAWN .K.N.  
CHECKED .K.N.

SCALE: 1:100

CLIENT: V HOLMES PTY LTD

APPROVED \_\_\_\_\_ DATE \_\_\_\_\_

PROPOSED SEPP 2009 AFFORDABLE  
HOUSING DEVELOPMENT

40-42 MAMRE ROAD, ST MARYS  
DETAILS NOTES

PLAN No. 1885LAN3 B  
FILE No. 1885LAN2  
SHEET 3 OF 3 SHEETS