

46-66 & O'Connell Street, Caddens

Landscape Masterplan Proposal

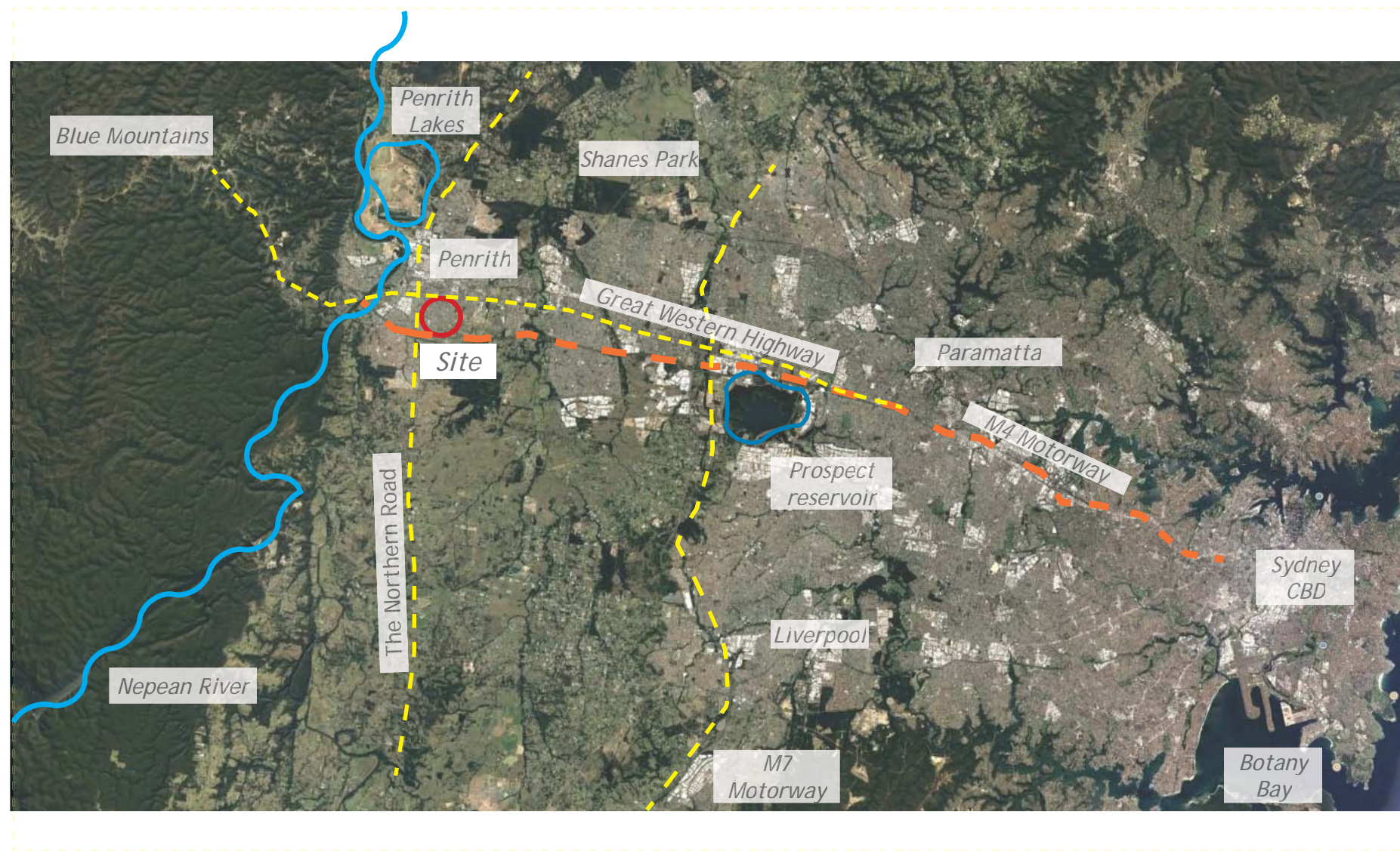
23rd January 2017

O'Connell Street, Caddens

Table of Contents

1.0	The Site	3
1.1	Site Location	3
1.2	Context Plan	4
1.3	Existing Character	5
1.4	Site Analysis & Opportunities	6
2.0	Concept and Proposal	7
2.1	Design Principles	8
2.1.1	Open Space - Village Square Park	9
2.1.2	Open Space - Ridge Park	10
2.1.3	Open Space - Woodland Park	11
2.2	Street trees strategy	
2.2.1	North - South Street trees	12
2.2.2	Productive Gardens	13
2.2.3	North - South Street trees - Typical Section	14
2.2.4	East - West Street trees	15
2.2.5	East - West Street trees - Typical Section	16
2.3	Integration of WSUD into the site	17
2.3.1	Rainwater Garden	18
2.3.2	Pond Water Detention	19

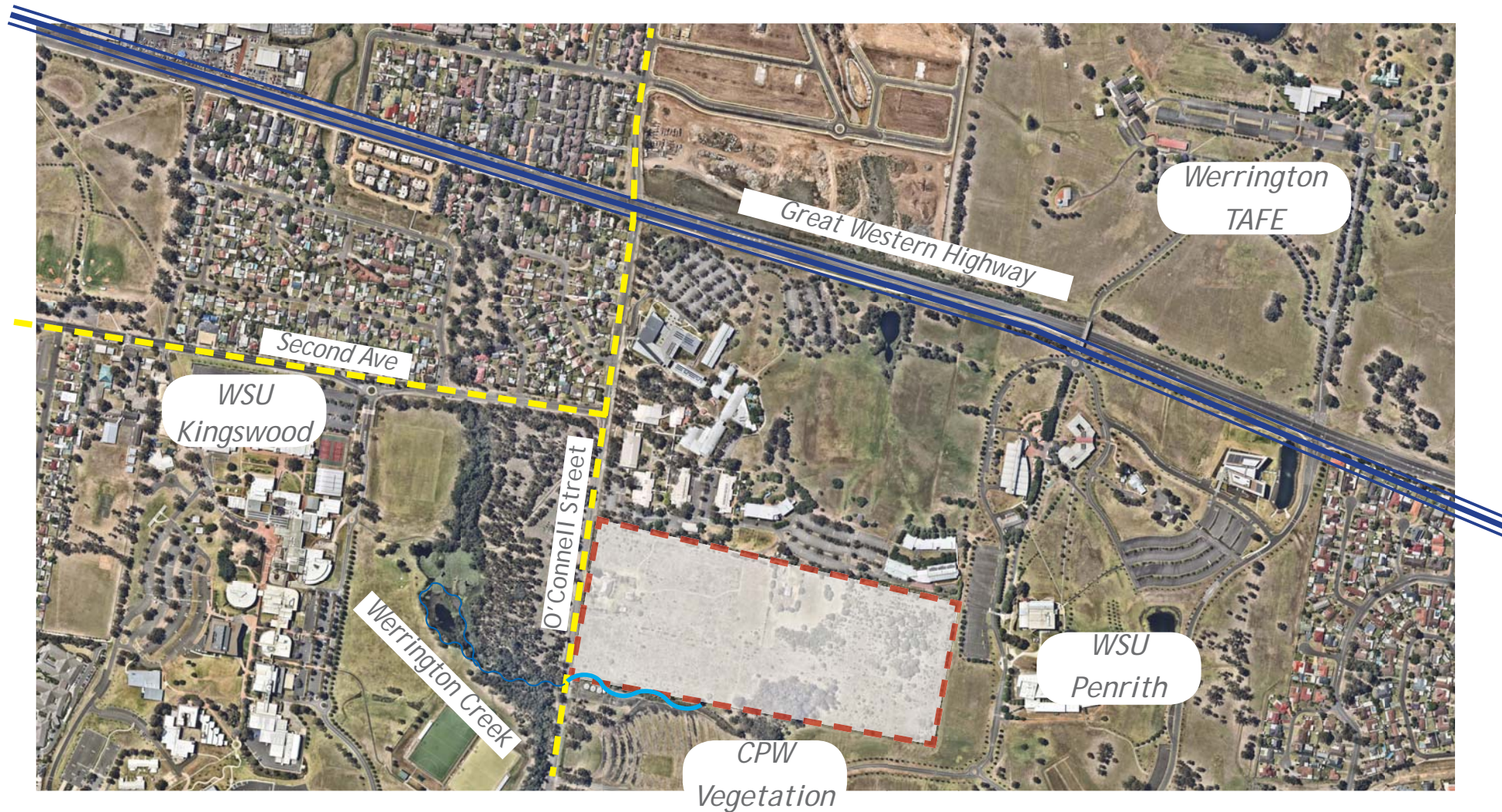




Site Location

The site is located to the East of the Blue Mountains and it is 1 hour drive from the centre of Sydney





Context Plan

The development is located on O'Connell Street and to the South of Great Western Highway. Western Sydney University (WSU) borders the development site along the southern and eastern boundaries.

The site is located midway between Second Avenue and Werrington Creek. It includes existing community of Cumberland Plain Woodland (CPW) on the southern portion of the site.

Legend

- Site Boundary
- First order stream
- Streets





Existing Character



Existing rolling landform



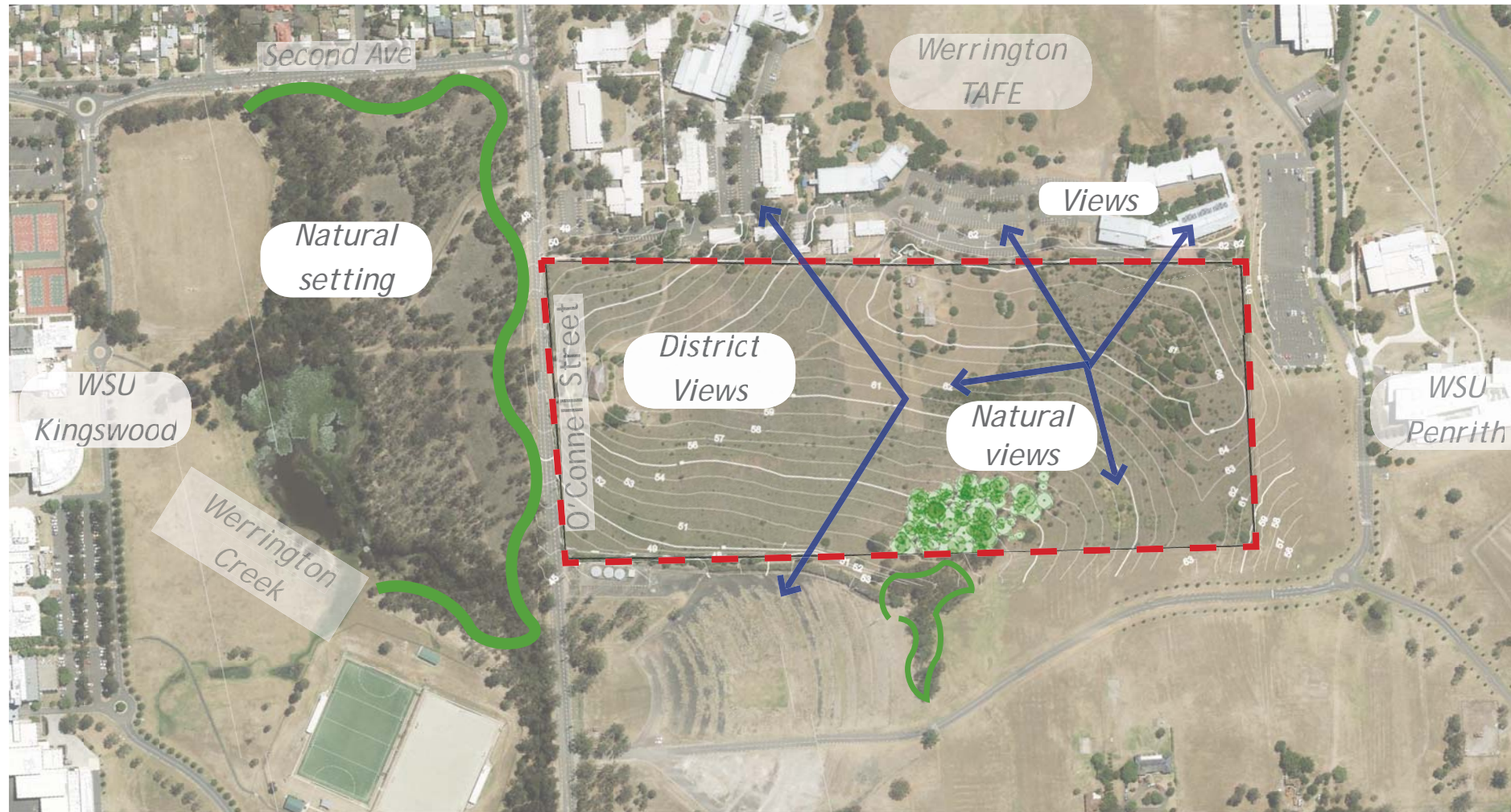
Remnant Cumberland Plain Woodland (CPW) to be retained



Remnant Cumberland Plain Woodland (CPW) to be retained



Existing edge condition







Site Analysis & Opportunities

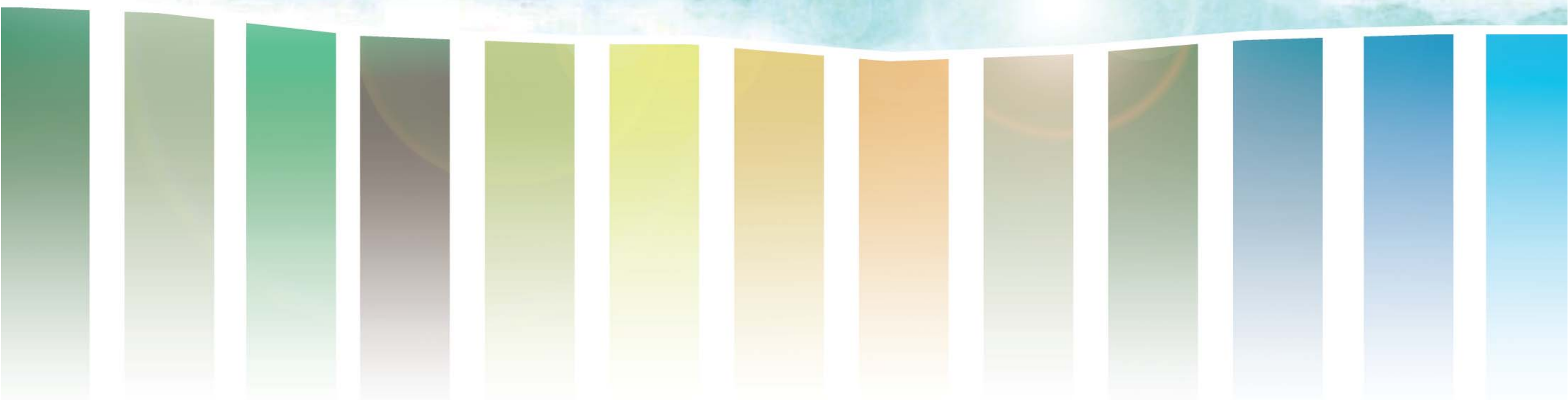
Located within the rolling hills at the Cumberland Plain Woodland (CPW), the site provides opportunities for district views South, West and North.

These views are complemented by the strong presence of existing bushland to the South (site) and North West.

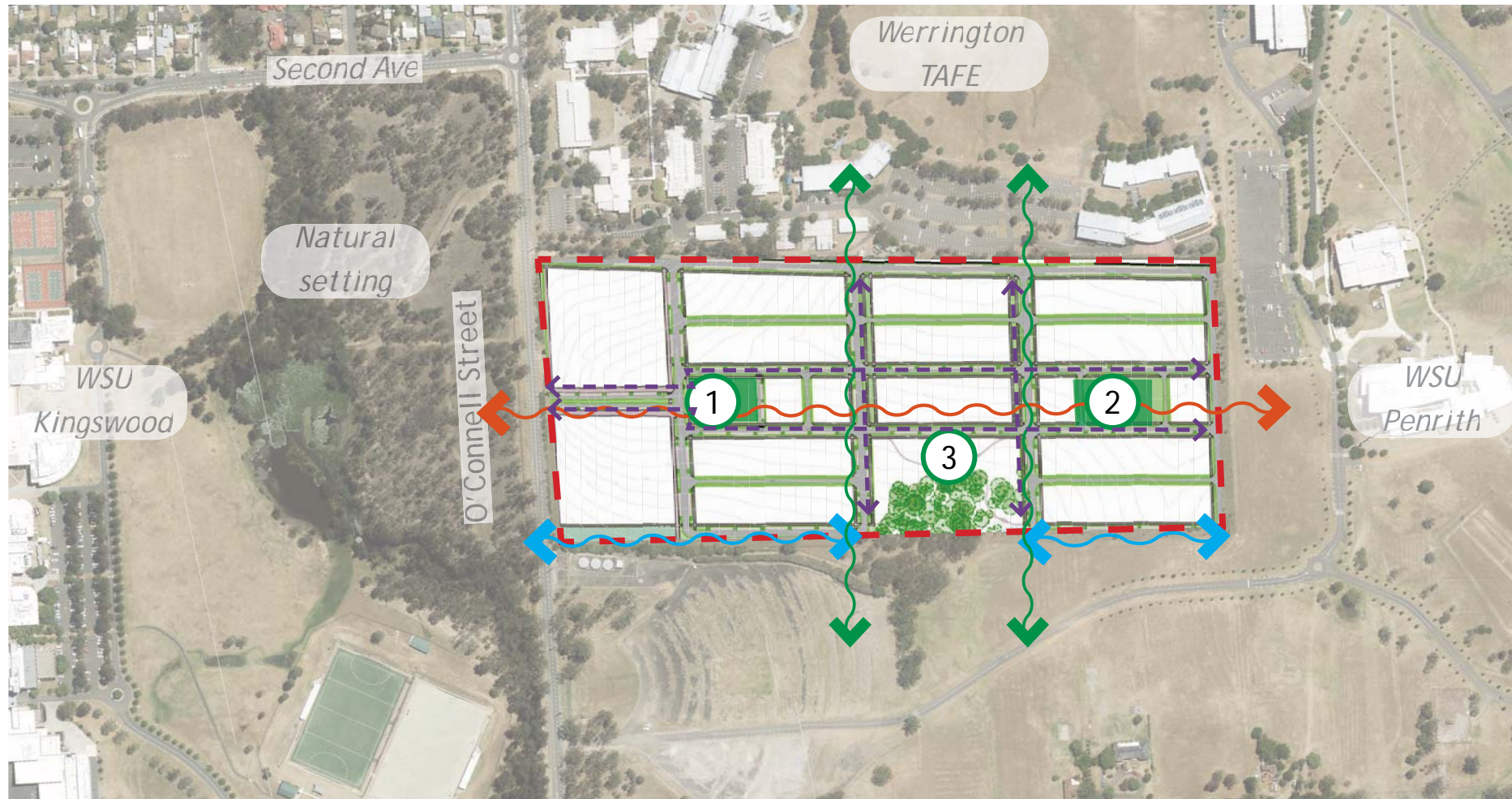
Legend

-  Site Boundary
-  View lines
-  Existing CPW within site
-  Existing bushland





Concept and Proposal



Design Principles

The design seeks to integrate the existing native vegetation character throughout the proposed development. The creation of parkland settings, street tree planting and productive gardens area focused around the retention of existing CPW as the centre of the development

- ① Village Square - Multi- purpose community facilities with shade trees and artworks
- ② Ridge Park - Pocket park with productive gardens promoting community interaction
- ③ Woodland Park - Containing 83.4% remnant CPW and additional 9.3% revegetation with active play and environmental rehabilitation
- ↔ Central evergreen spine - Accentuating connection with CPW
- ↔ Deciduous Avenue - Highlighting cultural background of area
- ↔ WSUD Integrated into development
- - - Site Boundary
- ← - → Shared cycle routes

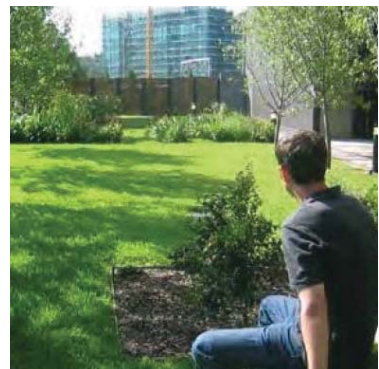


O'Connell Street, Caddens



Legend

- ① Entry plaza with feature paving, integrated public arts
- ② Communal productive gardens linked with BBQ and seatings
- ③ Iconic evergreen trees
- ④ Children play area with integrated public art equipment
- ⑤ Arbor with seats for parents
- ⑥ Central water feature
- ⑦ Open turf area
- ⑧ Feature deciduous trees along entrance arbor



Multi-purpose turf area



Arbor with climbers over



Water feature

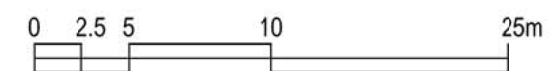


Play area with integrated artwork

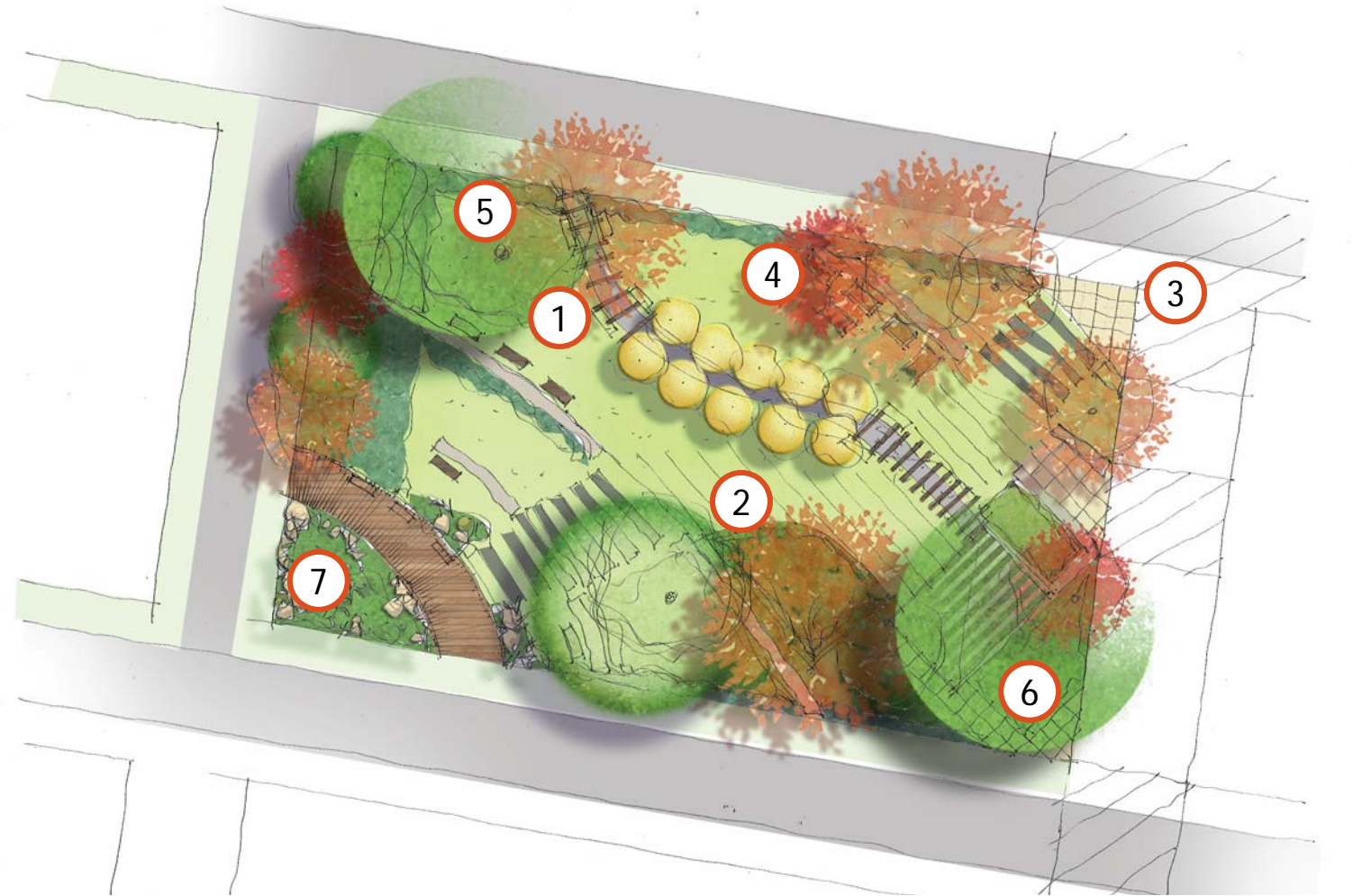


Integrated Public Art

DRAFT

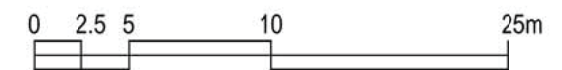


O'Connell Street, Caddens



Legend

- ① Entry plaza with integrated public arts
- ② Multi- purpose area
- ③ Entry with feature paving
- ④ Communal productive gardens linked with BBQ and seatings
- ⑤ Iconic shade tree
- ⑥ Communal BBQ area under canopy tree
- ⑦ Rainwater garden



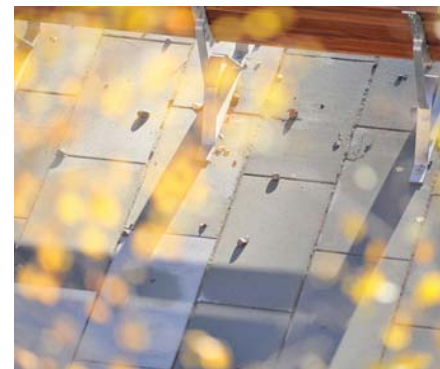
Communal productive Garden



Communal BBQ area



Deciduous trees with diverse seasonal interest



Iconic Trees

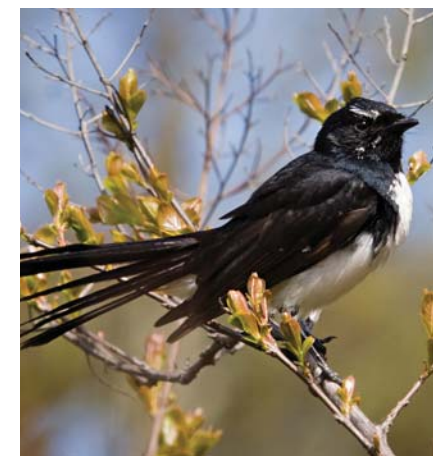


Woodland Park

Woodland Park with 84.3% retained CWP and additional 9.3% revegetation with bushland activity track promoting connection with nature and environment rehabilitation



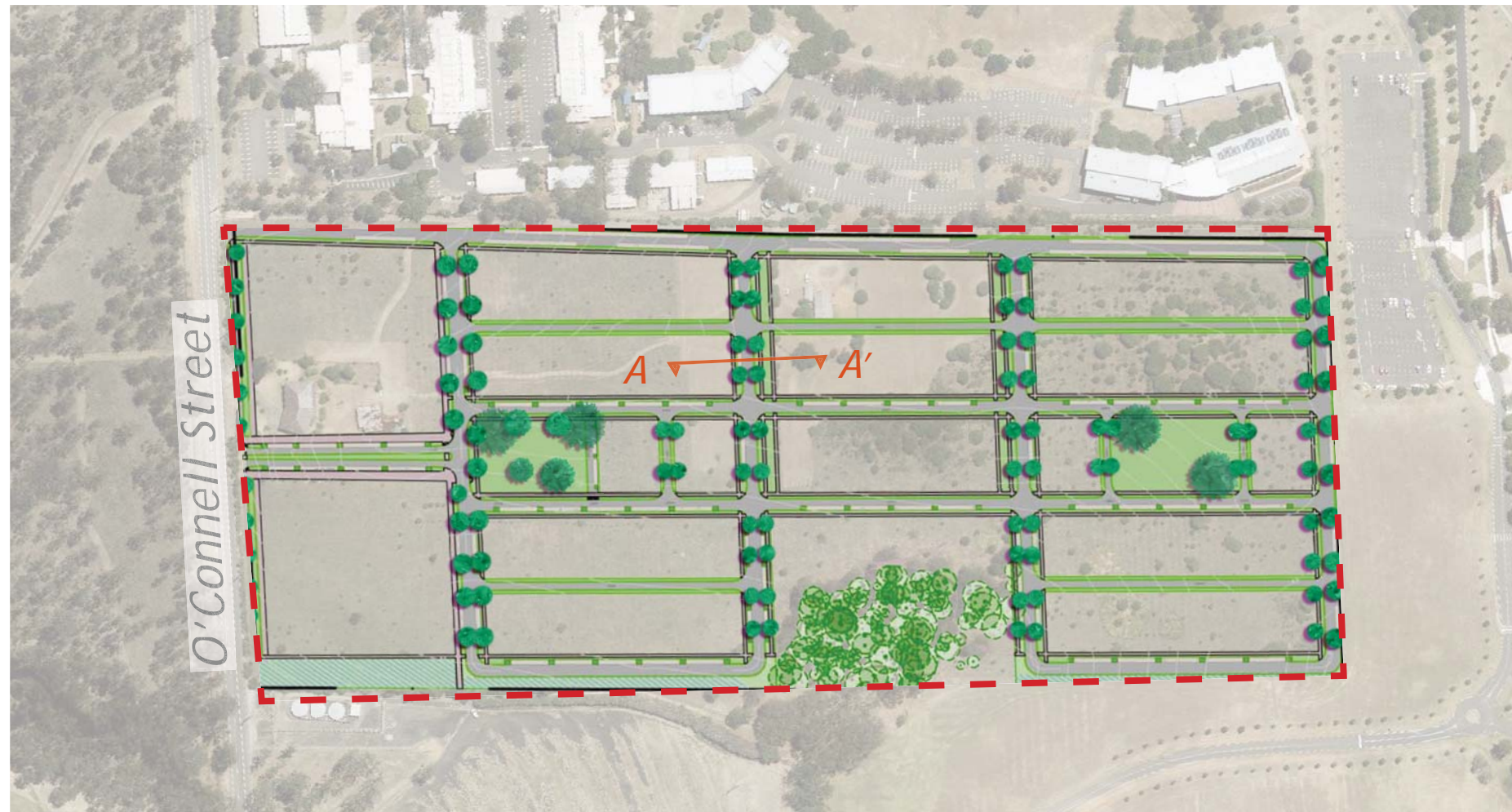
90% of remnant Cumberland Plain Woodland (CPW) to be retained



Existing fauna species observed on site (Refer to Traver Bushfire & Ecology - Flora & Fauna Assessment)



O'Connell Street, Caddens

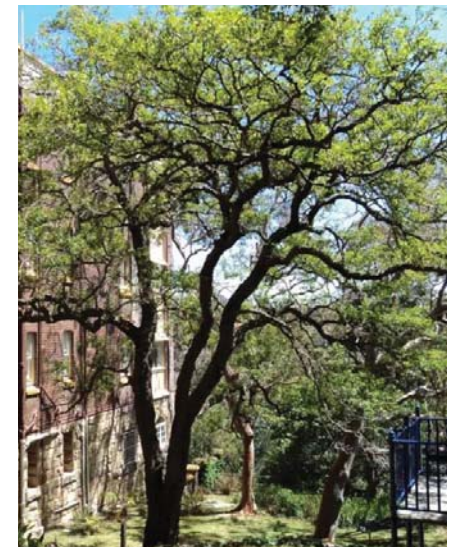


North-South Street trees

Native plant species are selected for minor streets to strengthen visual continuity and provide links to the existing Southern natural setting



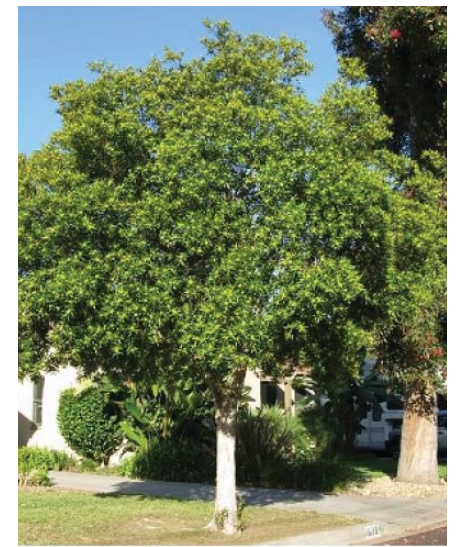
waterhousia floribunda



Glochidion ferdinandi



Pittosporum revolutum



Tristaniopsis laurina



O'Connell Street, Caddens



Productive Gardens

Theme of productive garden and low food miles integrated into development



Productive Garden



Citrus × meyeri
'Lemon Meyer'



Citrus latifolia



Citrus reticulata
'Mandarin Emperor'

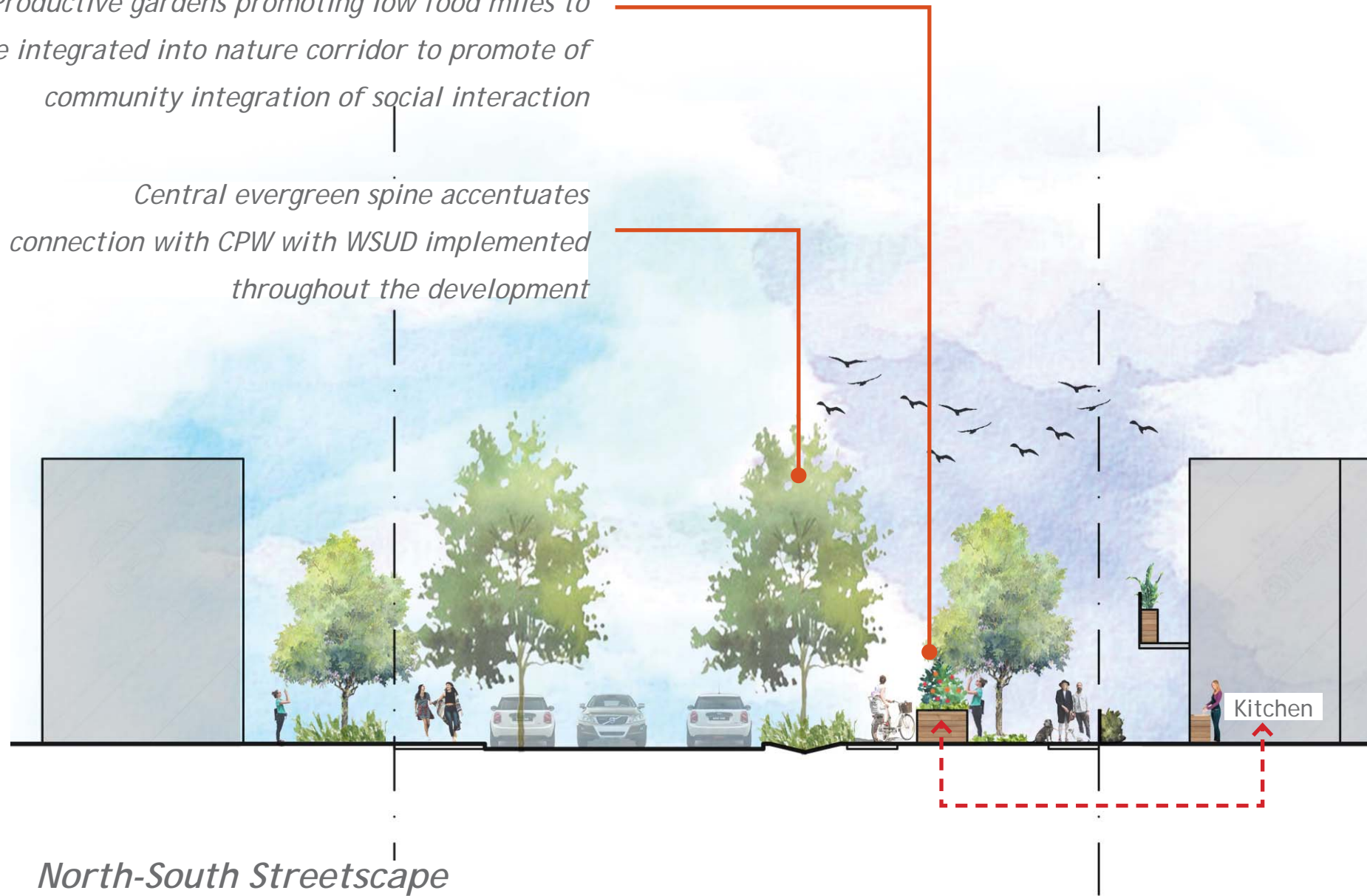


O'Connell Street, Caddens

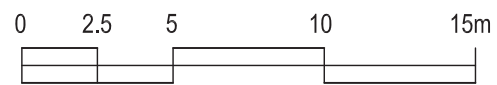


Productive gardens promoting low food miles to be integrated into nature corridor to promote of community integration of social interaction

Central evergreen spine accentuates connection with CPW with WSUD implemented throughout the development



North-South Streetscape
Typical Section AA'



Objectives

Central evergreen spine accentuates connection with CPW with WSUD implemented throughout the development

Fruiting trees are proposed to promote low food miles and to add a productive element to streets

Theme of productive gardens and low food miles integrated into development

Promotion of community integration of social interaction

O'Connell Street, Caddens



East - West Street trees

Deciduous trees are selected for major streetscape to provide diverse seasonal interest and a strong visual identity at a suitable scale to reinforce the street hierarchy



Gleditsia triacanthos
'Sunburst'



Acer "Autumn Blaze"



Prunus cerasifera 'Nigra'



Malus spectabilis
'Plena'

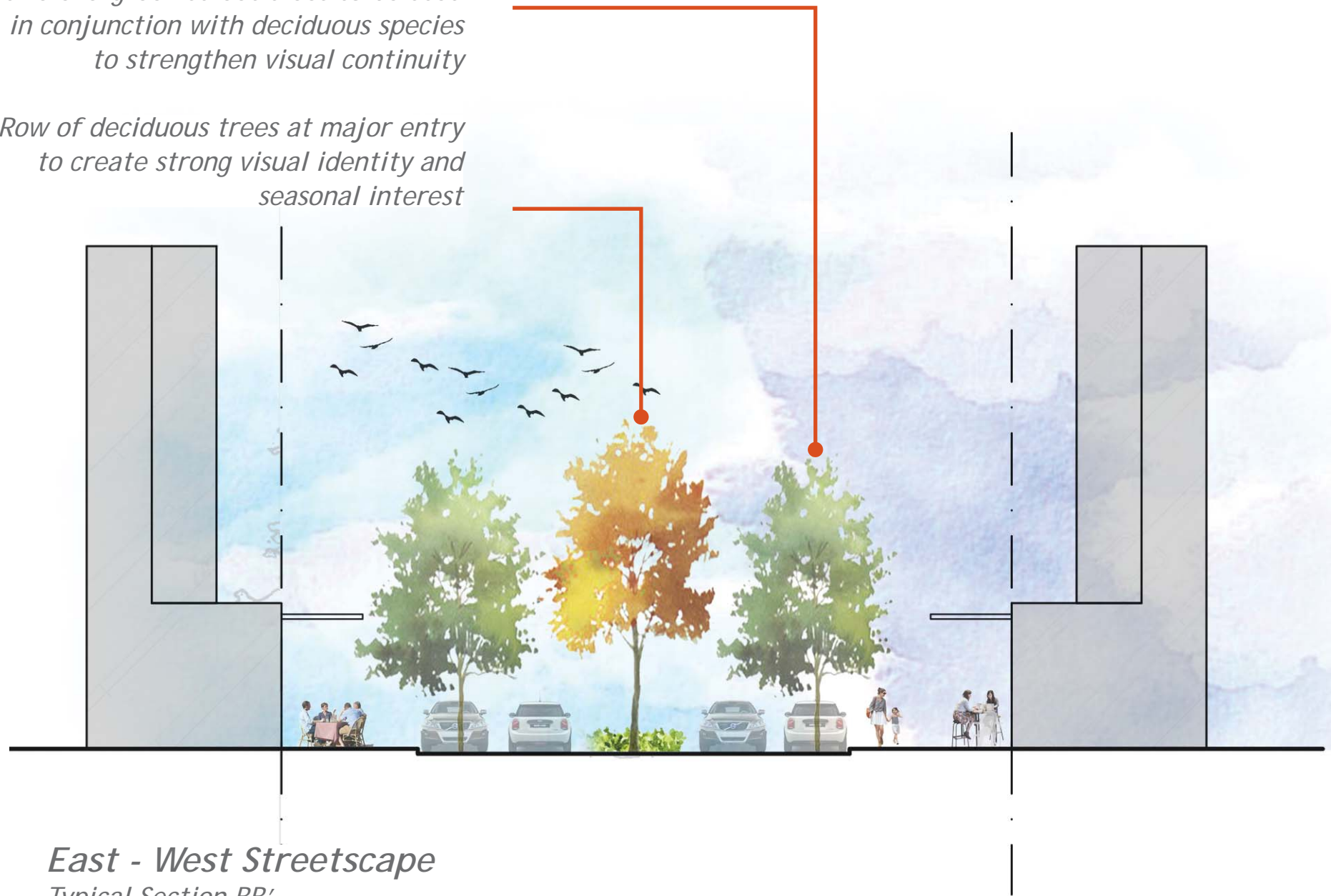


O'Connell Street, Caddens

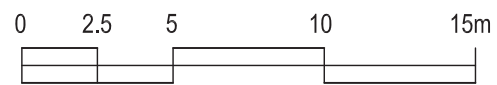


Native evergreen street trees to be used in conjunction with deciduous species to strengthen visual continuity

Row of deciduous trees at major entry to create strong visual identity and seasonal interest



*East - West Streetscape
Typical Section BB'*

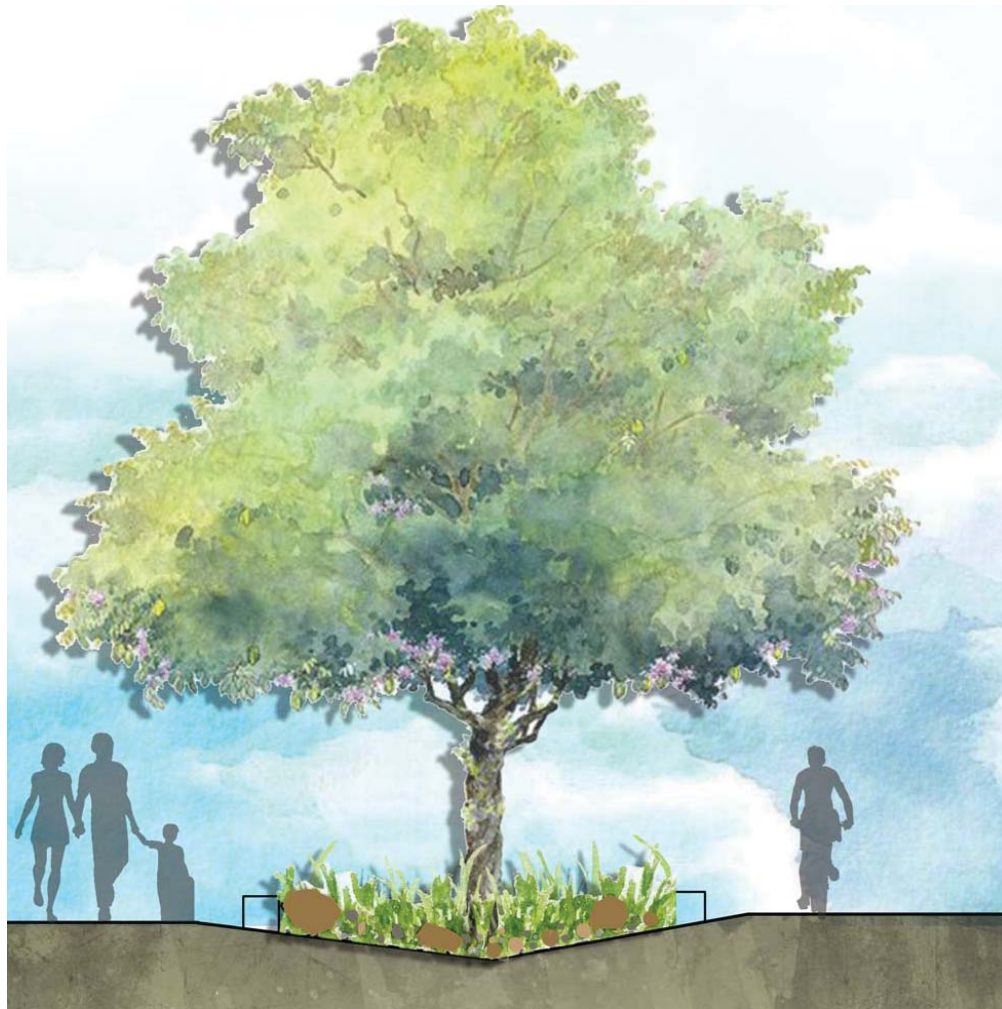


Objectives

- Creation of feature entry sequence and amenable street scape promoting retails and community hub*
- WSUD implemented throughout the development*
- Fruiting trees are proposed to promote low food miles and to add a productive element to streets*
- Theme of productive gardens and low food miles integrated into development*
- Deciduous Avenue highlighting cultural background of the area*

O'Connell Street, Caddens

Suggested Species



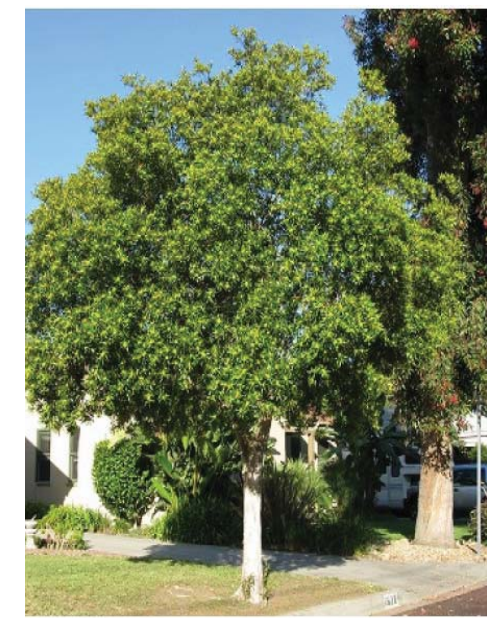
Rainwater Garden
Typical Section



Melaleuca quinquenervia



Melaleuca linariifolia



Tristaniopsis laurina



Danthonia racemosa



Dianella longifolia



Convolvulus erubescens



Doodia aspera



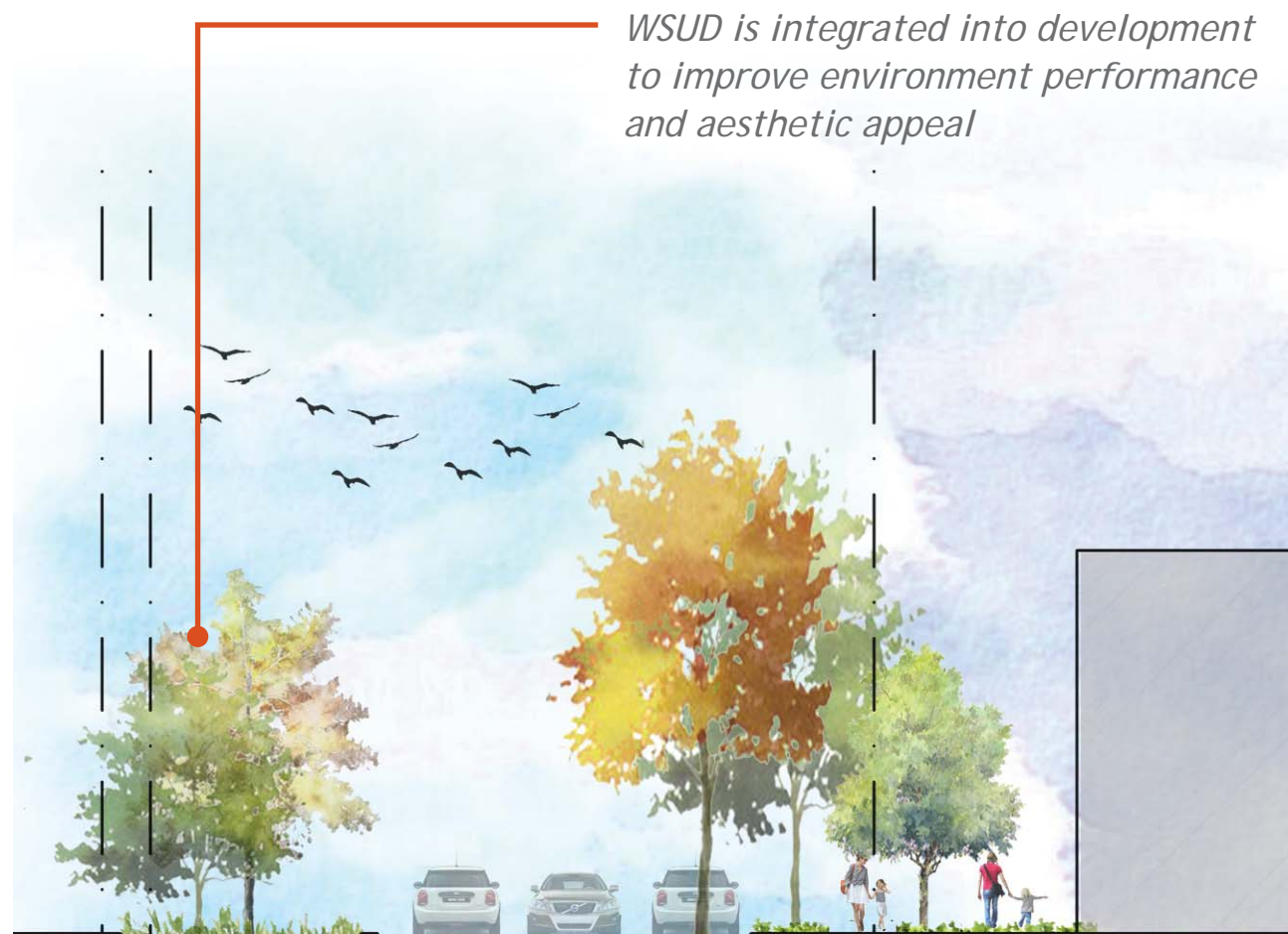
Imperata cylindrica



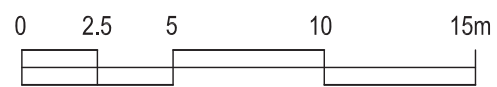
Lomandra longifolia

O'Connell Street, Caddens

Suggested Species



Surface Water Detention
Typical Section CC'



Melaleuca quinquenervia



Melaleuca linariifolia



Tristaniopsis laurina



Danthonia racemosa



Dianella longifolia



Convolvulus erubescens



Doodia aspera



Imperata cylindrica



Lomandra longifolia

