

Australian Arms Hotel

351 High St, Penrith NSW

LANDSCAPE DESIGN INTENT
JUNE 2020

Issue	Date	Description	Checked
01	04 / 06 / 2020	Concept design	MF
02	25 / 06 / 2020	Concept design	JC

Form Landscape Architects

900 Ann Street
Trinity Lane via Church Street
Fortitude Valley QLD 4006

PO Box 393
Fortitude Valley QLD 4006

T +617 3216 0606
info@formla.com.au

formla.com.au



Contents

1.0	Site Understanding	4			
1.1	Location & Context	5			
1.2	Site Photographs	6			
2.0	Design Approach	8			
2.1	Landscape Vision	9			
2.2	Design Drivers	10			
2.3	Landscape Levels	11			
3.0	Landscape Design	12			
3.1	Ground Level	13			
3.2	Ground Level Grading	14			
3.3	Level 1	15			
3.4	Level 2	16			
3.5	Level 3	17			
3.6	Level 4	18			
3.7	Level 5	19			
3.8	Level 6	20			
3.9	Recreation Capacity Plan	21			
			3.10	Structure Diagrams	22
			3.11	Structure Diagrams	23
			3.12	Structure Diagrams	24
			4.0	Sections & Elevations	25
			4.1	Section A — Playground and Outdoor Cafe	26
			4.2	Section B — Entry Driveway and Dropoff	27
			4.3	Section C — Lawson Street	28
			5.0	Design Details	29
			5.1	Hotel Character Images	30
			5.2	Playground Character Images	31
			5.3	Outdoor Cafe Character Images	32
			5.4	Lounge & Gym Area Character Images	33
			5.5	Level 3-6 Character Images	34
			5.6	Materials and Finishes	35
			5.7	Planting Palette	36

Part One

Site Understanding



1.1 Location & Context



Site Understanding
1.2 Site Photographs



1.3 Surrounding Built Landscape Character



- 01 *Front Court of St Nicholas of Myra, High Street*
- 02 *Jamison Park Playground, York Road*
- 03 *Memory Park, High Street corner Woodrift Street*
- 04 *Quest Hotel Public Realm, Lord Sheffield Circuit*
- 05 *Retail Landscape of Westfield Shopping Centre, High Street*
- 06 *Thornton Playground, Lord Sheffield Circuit*

Part Two

Design Approach



2.1 Landscape Vision



To create a robust landscape design language that complements the architecture theme

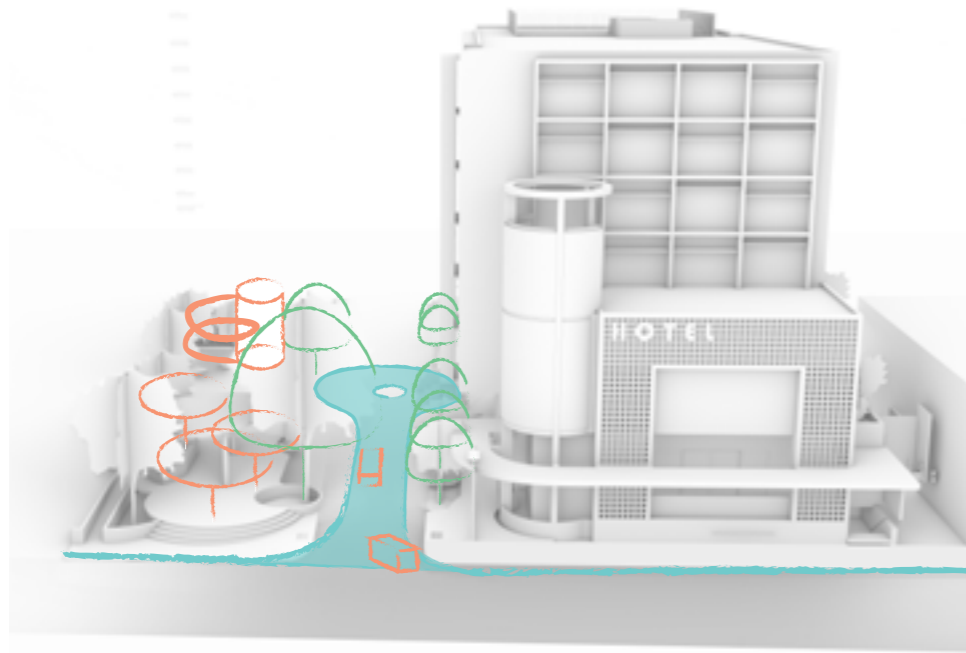


To provide landscape outdoor spaces as part of hotel amenities catering all ages.

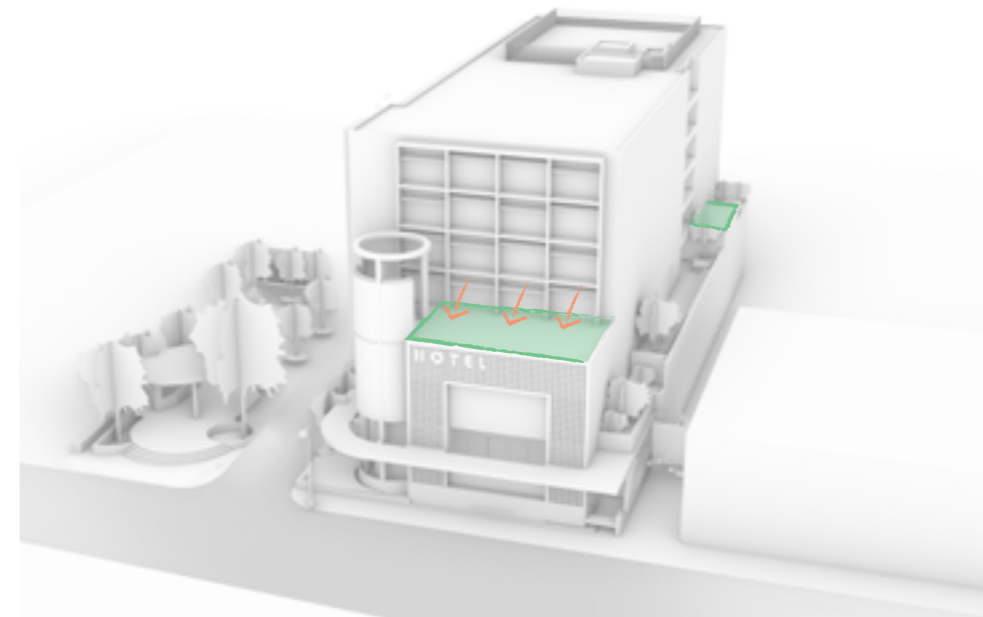


To create layered planting that occupies multiple levels and softens building facade.

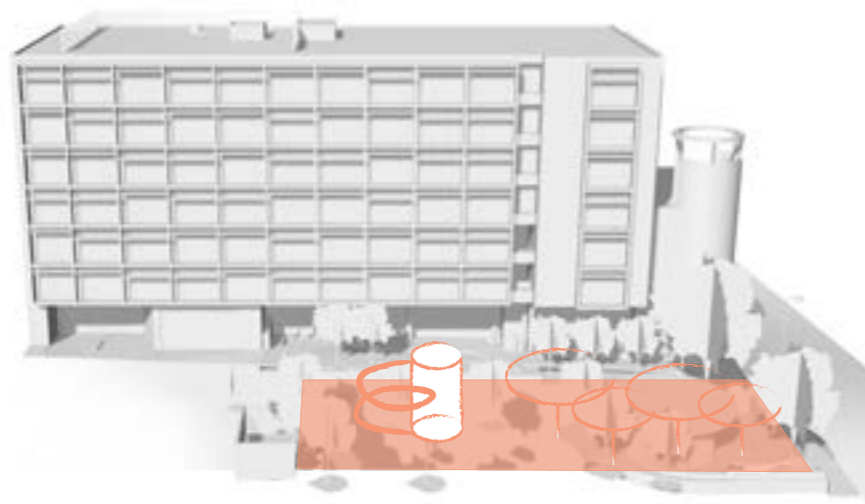
Design Approach
2.2 Design Drivers



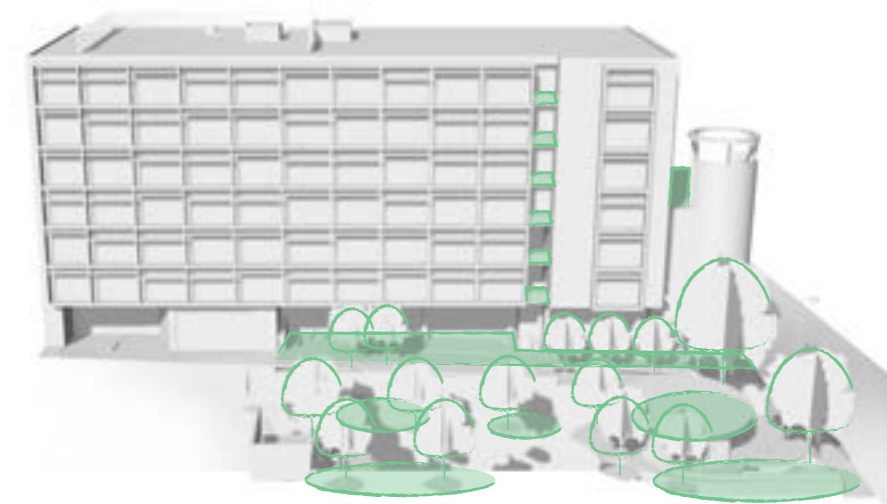
Sense of arrival



Sustainable green roof with a view

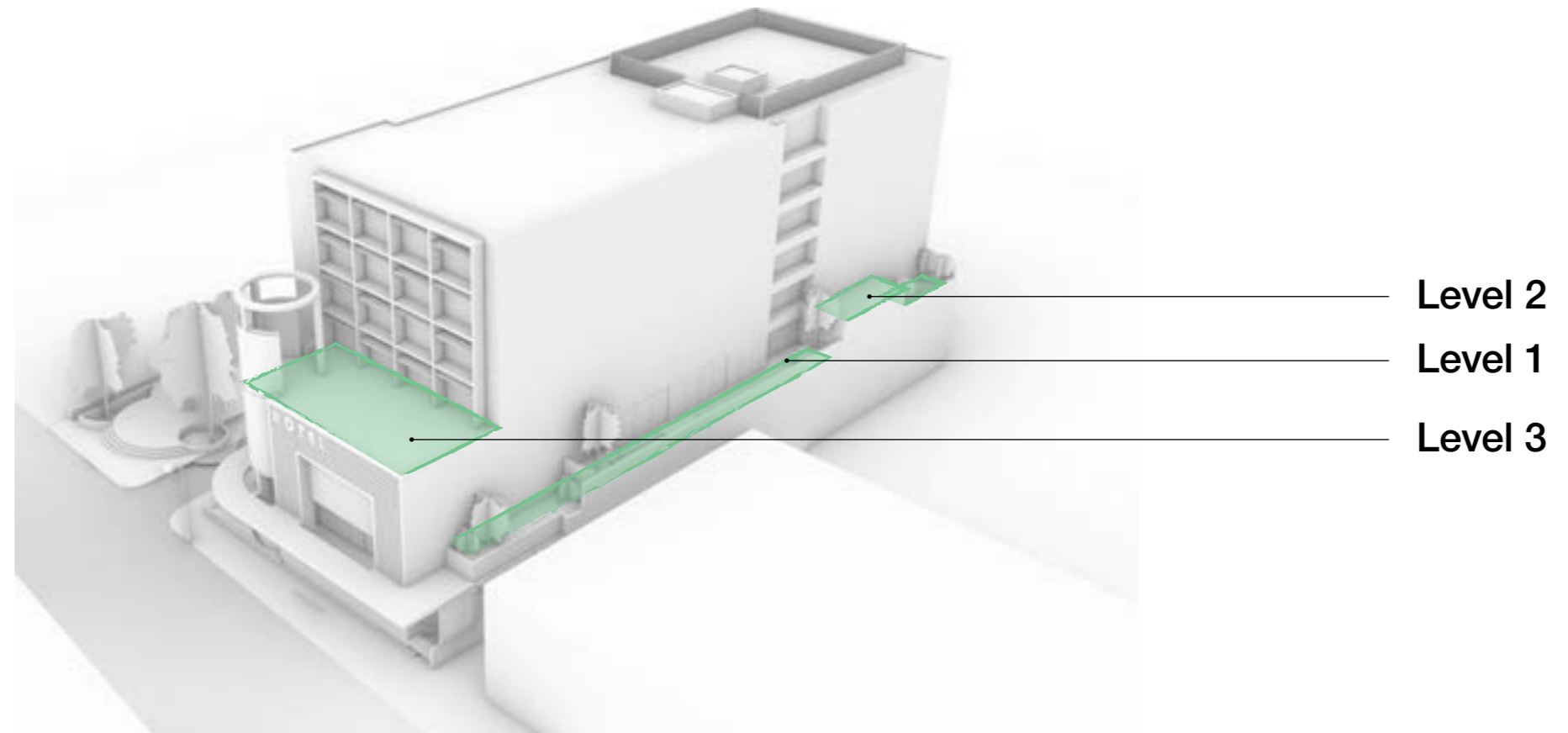
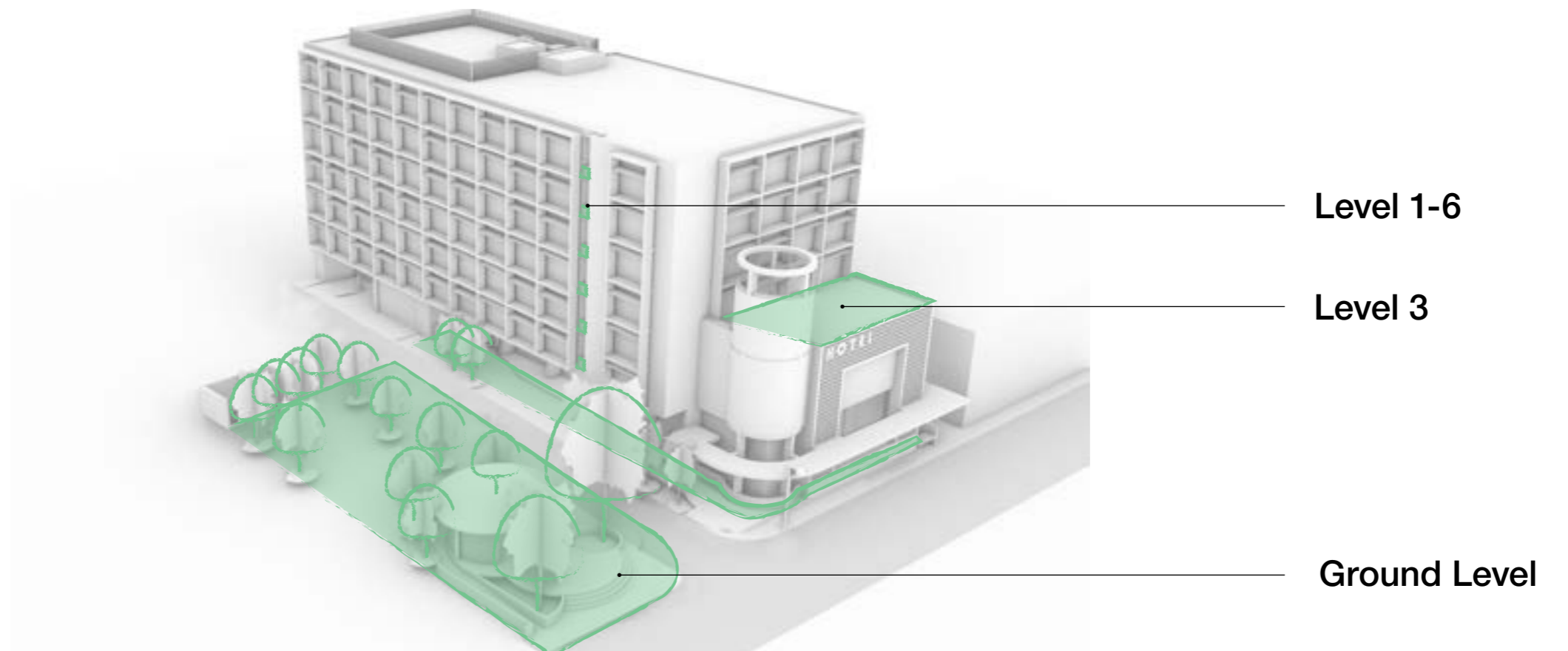


Space activation



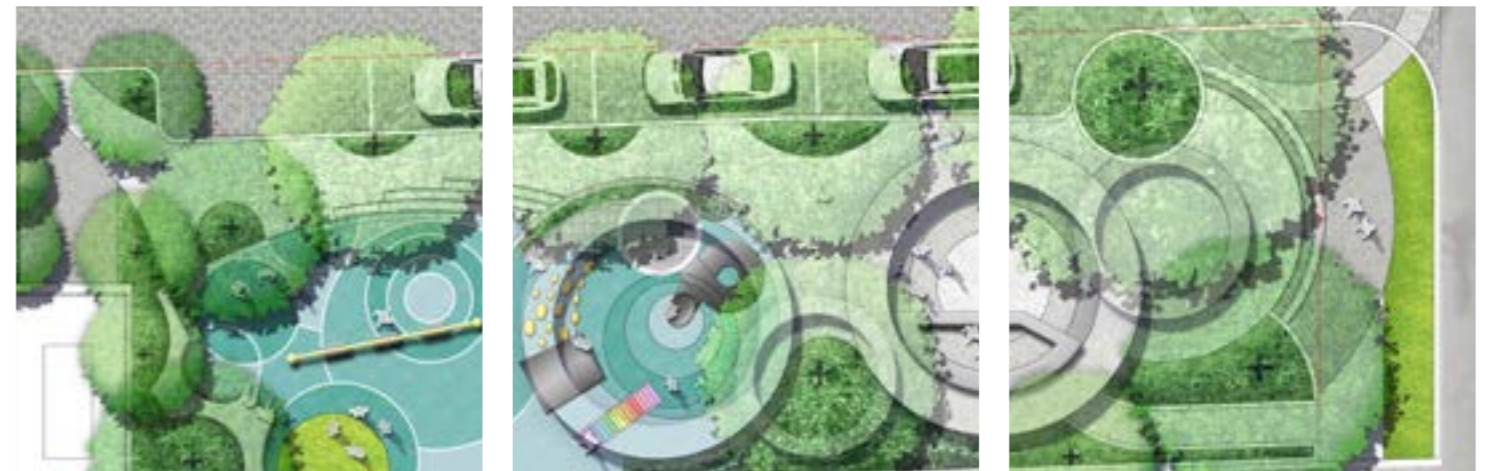
Green edges

2.3 Landscape Levels



Part Three

Landscape Design

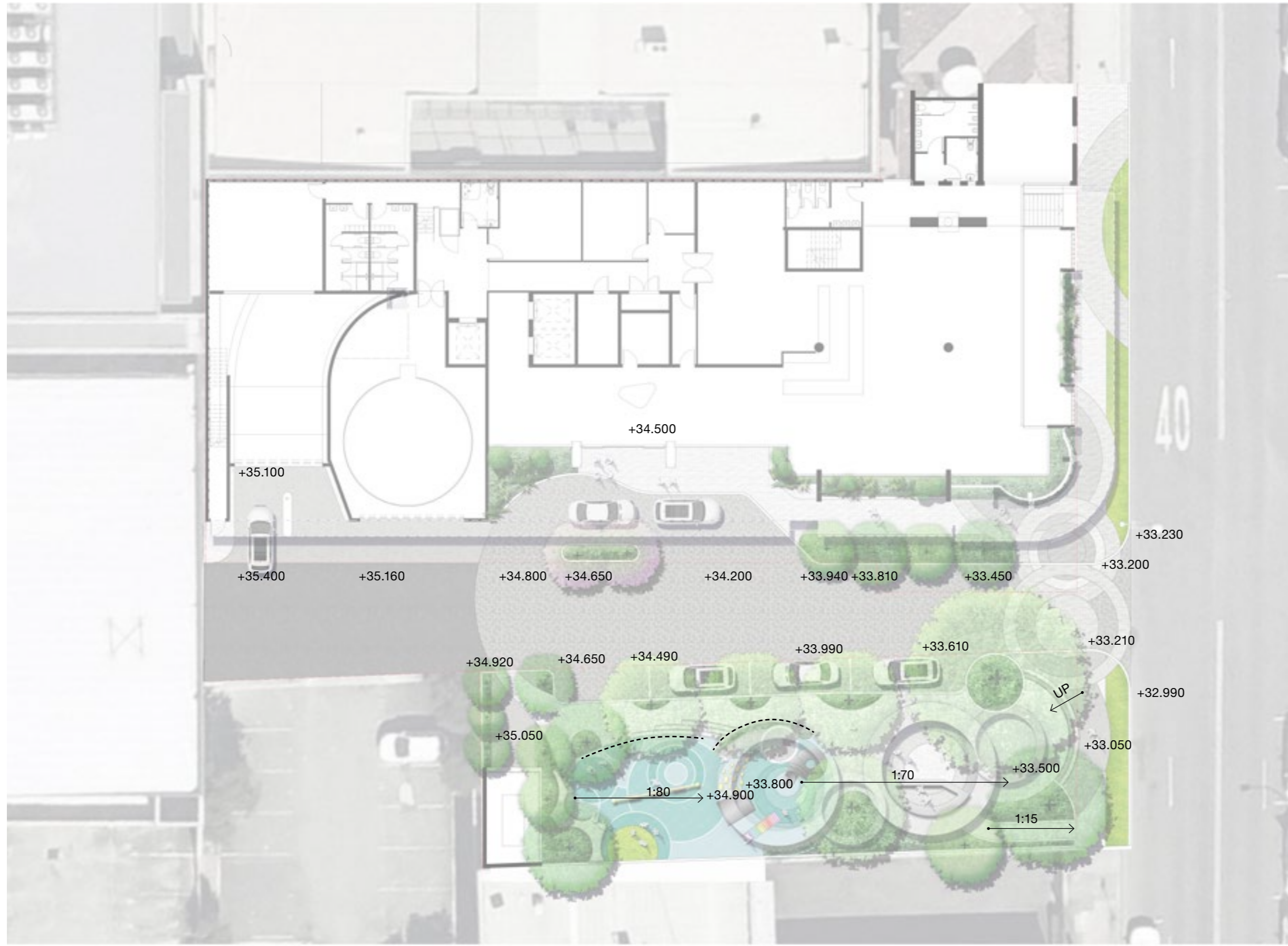


Landscape Design
3.1 Ground Level



- Legend**
- 1** Hotel entry
 - 2** Drop-off
 - 3** Outdoor Cafe
 - 4** Big kid's play
 - 5** Toddler's play
 - 6** Substation
 - 7** Basement carpark entry
 - 8** Push back stair to allow garden bed

Landscape Design
3.2 Ground Level Grading



- Legend**
- +0.00 Level
 - ↔ Gradient
 - Fence / Retaining wall



Landscape Design
3.3 Level 1



Legend

- 1** Elevated slab seat with feature tree
- 2** Elevated slab seat with Bamboo
- 3** Planter
- 4** Timber wall decoration
- 5** Green wall
- 6** Garden display
- 7** Recycled timber screen
- 8** Cascading planter



Legend

- 1 Gravel mulch
- 2 Cascading planter



Legend

- 1** Cascading planter
- 2** Green roof



Legend

- 1 Cascading planter



Legend

- 1 Cascading planter



Legend

- 1 Cascading planter

3.9 Recreation Capacity Plan



GROUND LEVEL



LEVEL01

PROPOSED DEVELOPMENT: HOTEL

115 x 1 Bedroom

For the purposes of this assessment we have assumed the following:

100% Occupancy

- 1.5 people x 115 = 173 people

90% Occupancy








- 173 people x 90% = 155 people

Occupants utilising recreation areas at any one time (assume 33%)

- 155 people x 33% = 51 people

The Recreation Capacity Plan will need to demonstrate that **51** people can recreate in the communal recreation space area provided in the proposed development.

The current Recreational Capacity Plan, based on usable communal recreation space, demonstrates **60** people can recreate comfortably in the area provided and should be viewed as compliant.

	Function Of Space	Area(m ²)	Spatial Requirements (m ² / Person)		
	Playground	Active Recreation	111m ²	11	10
	Outdoor Cafe	Breakout Space, Guests Functions, Social Interaction	102m ²	11	9
	Conference Centre	Guests Function, Social Interaction	263m ²	11	24
	Pre-function	Guests Functions, Social Interaction	87m ²	11	8
	Breakout Space	Guests Functions, Social Interaction	48m ²	11	4
	Gym	Active Recreation	46m ²	11	4
	Gym Terrace	Social Interaction, Active Recreation	12m ²	11	1
Total Communal Recreation Space			669m²	Recreation Capacity	60



Landscape Design
3.10 Structure Diagrams



PLANTING
GROUND FLOOR
 Deep planting = 71.6m²
 800mm depth = 66.3m²
 400mm depth = 4.6m²



PLANTING
LEVEL1
 800mm depth = 4.4m²
 600mm depth = 25.1m²
 400mm depth = 26.3m²

- Legend**
- Deep planting on natural ground — 71.6m² (3.83% of total site area)
 - Podium planting — 400mm depth
 - Podium planting — 600mm depth
 - Podium planting — 800mm depth
 - Existing trees to retain



3.11 Structure Diagrams



PLANTING

LEVEL2

600mm depth = 1m²

Gravel mulch = 21m²



PLANTING

LEVEL3

600mm depth = 4m²

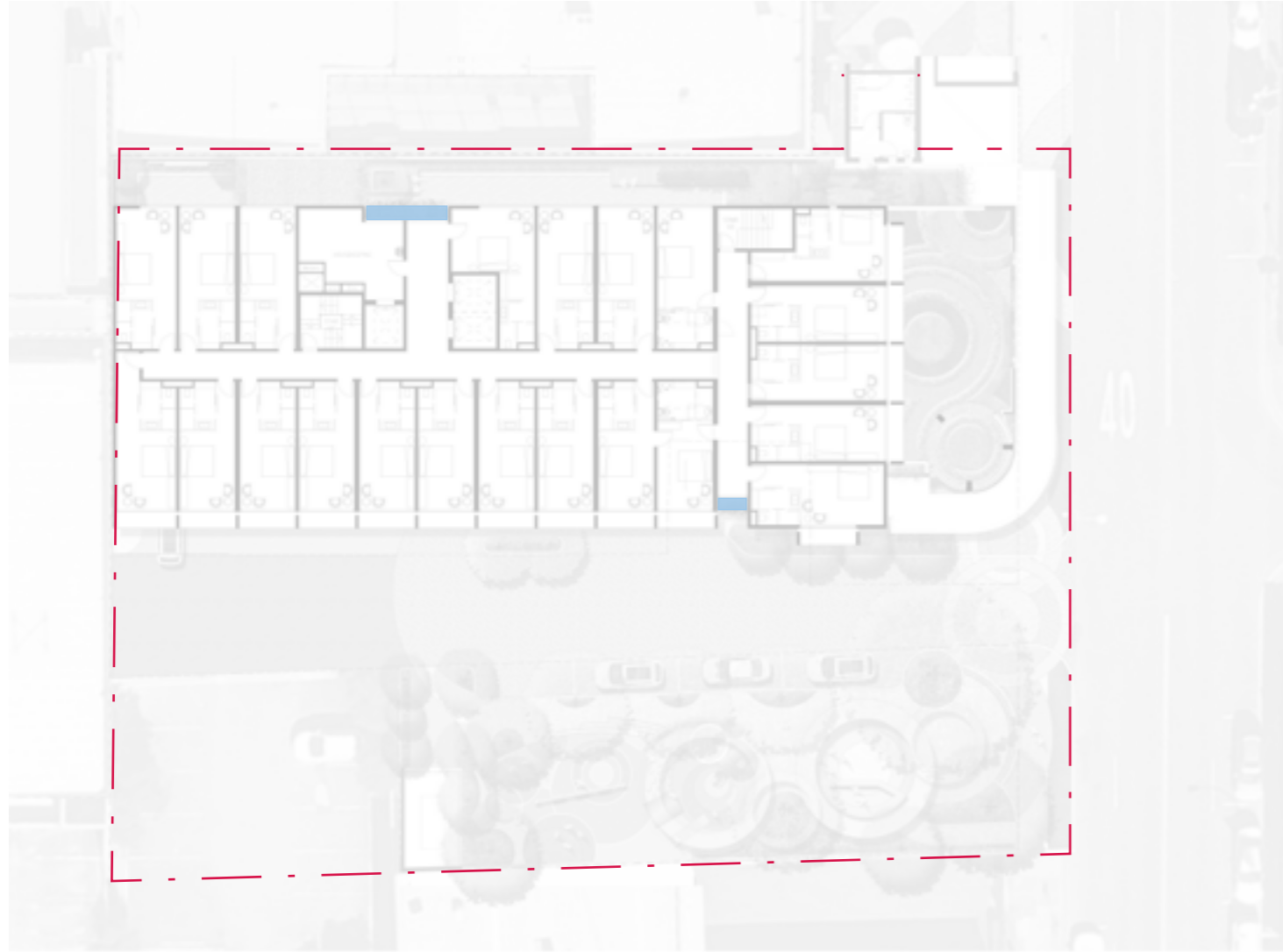
400mm depth = 117.5m²

Legend

- Podium planting — 400mm depth
- Podium planting — 600mm depth
- Gravel Mulch



3.12 Structure Diagrams



PLANTING

LEVEL4-6

600mm depth = 4m2

Legend

■ Podium planting — 600mm depth



Part Four

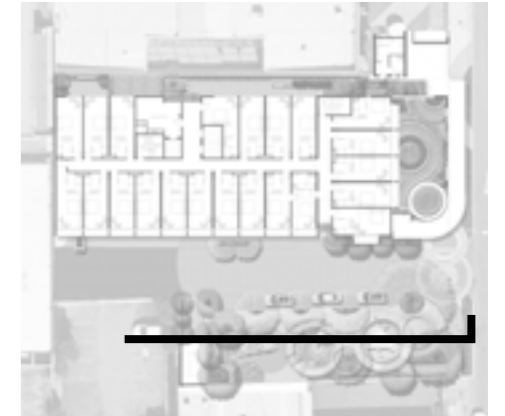
Sections & Elevations



4.1 Section A — Playground and Outdoor Cafe

Legend

- 1** Cast in-situ concrete seat
- 2** Swing
- 3** Playground safety rail
- 4** Tower play with slide
- 5** Green ring arbour
- 6** Glass block wall
- 7** Outdoor cafe
- 8** Retain existing large tree
- 9** Stairs



Key Plan | Ground Level



LAWSON STREET



4.2 Section B — Entry Driveway and Dropoff



Key Plan | Ground Level



Legend

- 1** Green cascade to upper level planters
- 2** Planter with lush species layering
- 3** Small trees to driveway with understory planting
- 4** Feature flowering trees at porte cochere
- 5** Car parking entry

4.3 Section C — Lawson Street



Key Plan | Ground Level

Legend

- 1** Retained existing tree
- 2** Layered lush understorey planting
- 3** Outdoor cafe / playground
- 4** Entry driveway
- 5** Planter
- 6** Display garden to conference centre



Part Five

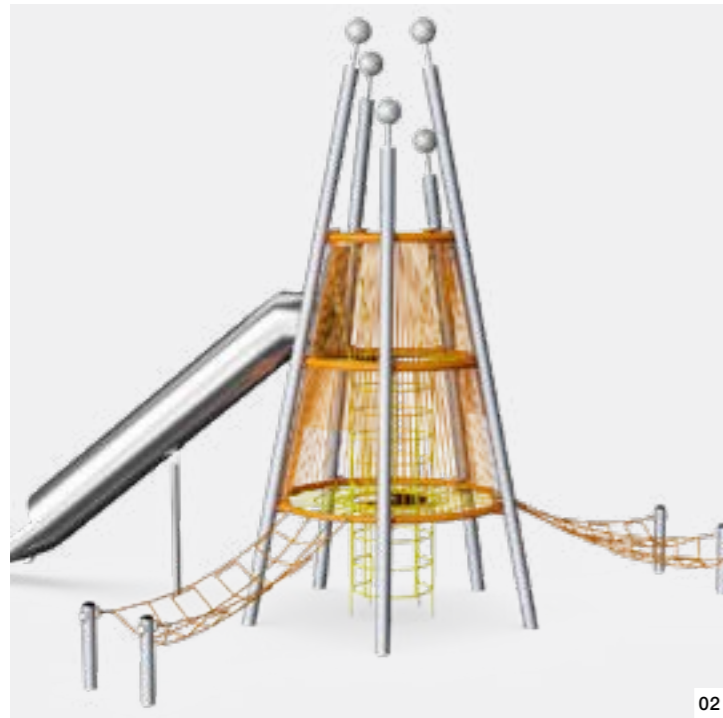
Design Details



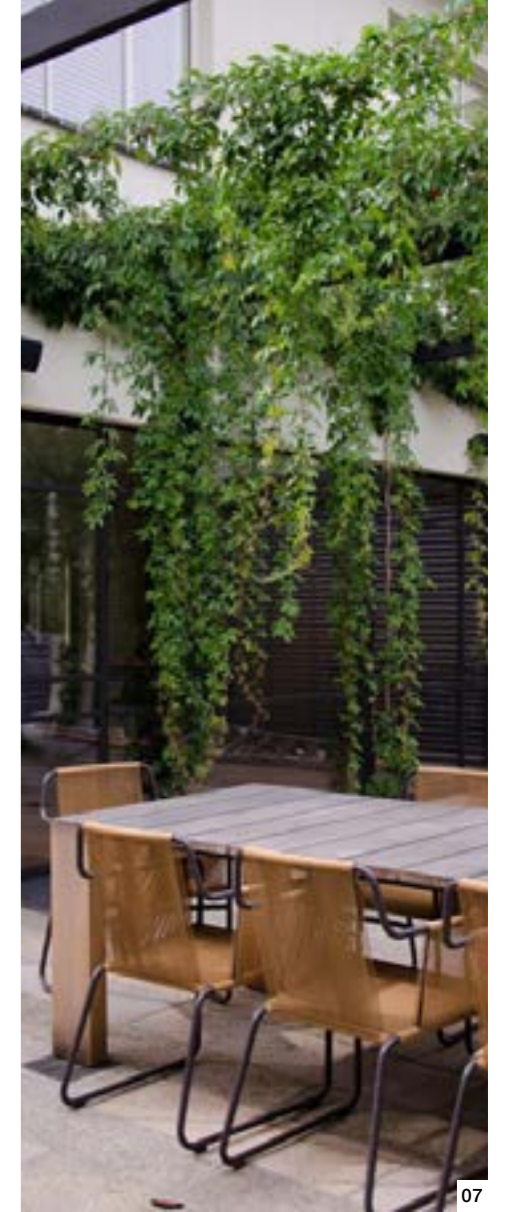
5.1 Hotel Character Images



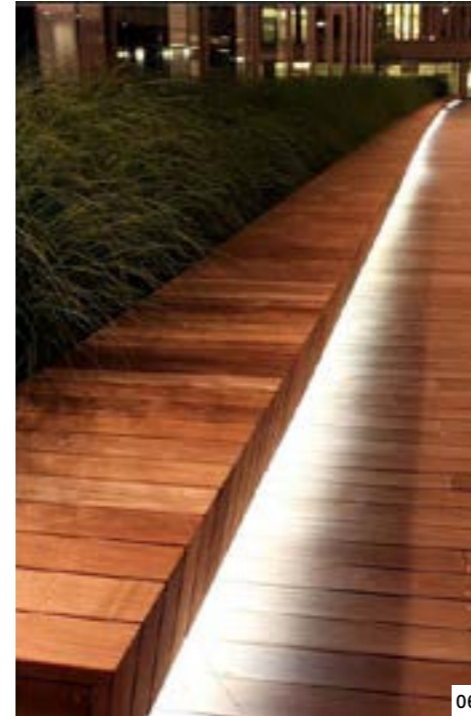
5.2 Playground Character Images



5.3 Outdoor Cafe Character Images



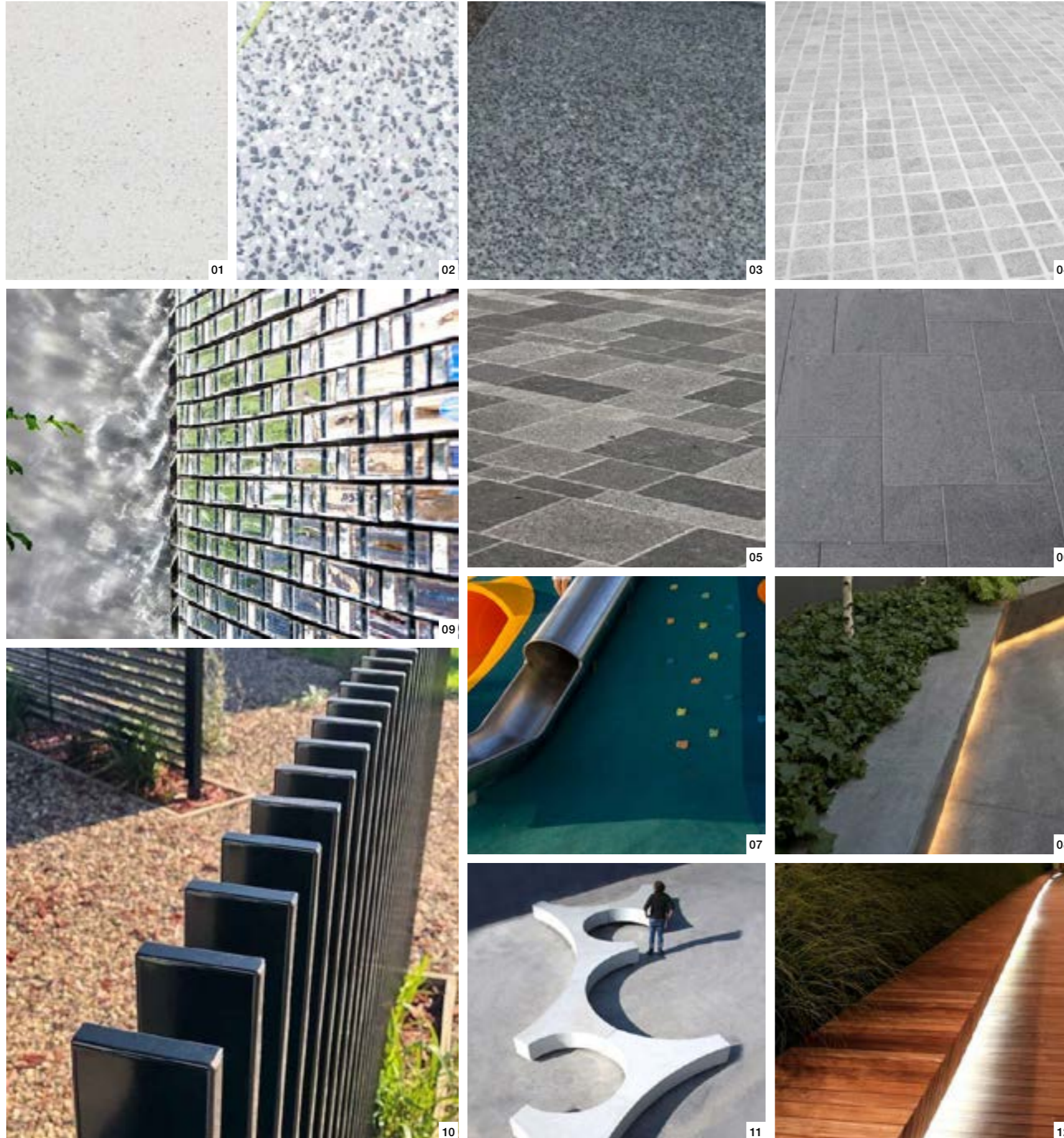
5.4 Lounge & Gym Area Character Images



5.5 Level 3-6 Character Images



5.6 Materials and Finishes



SURFACE FINISHES		
01	Paving Type 1	<i>White exposed aggregate concrete</i>
02	Paving Type 2	<i>Light grey exposed aggregate concrete</i>
03	Paving Type 3	<i>Dark grey exposed aggregate concrete</i>
04	Paving Type 4	<i>Grey cobbles</i>
05	Paving Type 5	<i>Granite tiles random grey</i>
06	Paving Type 6	<i>Granite tiles grey</i>
07	Paving Type 7	<i>Softfall</i>
WALLS		
08	Wall Type 1	<i>Planter wall</i>
09	Wall Type 2	<i>Glass block wall</i>
FENCES		
10	Fence Type 1	<i>Tubular steel 1400mm high black</i>
SEATS		
11	Seat Type 1	<i>Cast in-situ off-white concrete</i>
10	Seat Type 2	<i>Timber seat</i>

Design Details
5.7 Planting Palette



TREES

01	<i>Ficus benjamina</i>	Benjamin's Fig
02	<i>Tristaniopsis 'Luscious'</i>	Luscious
03	<i>Cupaniopsis anacardioides</i>	Tuckeroo
04	<i>Randia fitzalanii</i>	Native Gardenia
05	<i>Waterhousia floribunda</i>	Weeping Lily Pilly
06	<i>Lagerstroemia indica 'Natchez'</i>	White Crepe Myrtle
07	<i>Lagerstroemia indica</i>	Crepe Myrtle

Design Details
Planting Palette



SHRUBS

				Streetscape	Deep Landscape	Green Facade	Roof
01	CAR mac	Carissa Macrophylla	Bush Plum		✓		✓
02	CAL zeb	Calathea zebrina	Zebra Plant		✓	✓	
03	CRA ova	Crassula ovata	Jade Plant			✓	✓
04	DOR pal	Doryanthes palmerii	Gynea Lily		✓	✓	
05	DRA com	Dracaena compacta	Dracaena		✓	✓	
06	FIC mic	Ficus microcarpa 'Green Island'	Green Island			✓	✓
07	MON spe	Monstera speciosa	Split-Leaf PHILODENDRON		✓	✓	
08	PEP obt	Peperomia obtusa	Peperomia		✓	✓	
09	PHI con	Philodendron 'Rojo Congo'	Rojo Congo		✓	✓	
10	PIT tob	Pittosporum tobira 'Miss Muffet'	Miss Muffet		✓	✓	✓
11	RHA exc	Rhapsis excelsa	Slender Lady Palm		✓	✓	
12	ZAM fur	Zamia furfuracea	Cardboard Plant		✓	✓	✓

Planting Palette



01



02



03



04



05



06



07



08



09



10



11

GROUNDCOVERS & CLIMBERS

			Streetscape	Deep Landscape	Green Facade	Roof
01	<i>CIS ant</i>	<i>Cissus antarctica</i>	Kangaroo Vine	✓	✓	✓
02	<i>CIS ell</i>	<i>Cissus 'Ellen Danica'</i>	Grape Ivy	✓	✓	
03	<i>AGA att</i>	<i>Agave attenuata</i>	Agave	✓	✓	✓
04	<i>CAS cou</i>	<i>Casuarina glauca 'Cousin It'</i>	Cousin It		✓	✓
05	<i>FIC pum</i>	<i>Ficus pumila</i>	Climbing Fig		✓	✓
06	<i>PAN jas</i>	<i>Pandorea jasminoides</i>	Bower Vine			✓
07	<i>PHI xan</i>	<i>Philodendron xanadu</i>	Xanadu	✓		
08	<i>PHY mul</i>	<i>Phyllanthus multiflorus</i>	Phyllanthus		✓	
09	<i>PLE ver</i>	<i>Plectranthus verticillatus</i>	Swedish Ivy		✓	✓
10	<i>ZOY ten</i>	<i>Zoysia tenuifolia</i>	Korean Carpet Grass	✓		✓
	<i>LIR jus</i>	<i>Liriope muscari just right</i>	Just Right	✓		
	<i>GOO ova</i>	<i>Goodenia ovata</i>	Hop goodenia		✓	✓
11	<i>EPI aur</i>	<i>Epipremnum aureum</i>	Devil's Ivy		✓	

FORM