

DEFQON1

FESTIVAL

18 ⚡ 19 SEPTEMBER 2015
SYDNEY ⚡ AUSTRALIA

at the Sydney International Regatta Centre

Event Management Plan

prepared by Q-dance Australia Pty Ltd

1. Introduction and New Features in 2015	5
2. Operations Overview	5
3. Stage operations	6
<i>Table 3.1 Stage operations</i>	<i>6</i>
4. Production key dates	7
5. Site Plans	7
6. Organisation and Management	8
7. Conditions of Entry	9
8. Temporary Structures	11
8.1 Major and custom designed structures	11
8.2 Small Tents	11
8.3 New Camping Bridge	11
<i>Table 8.3 Camping bridge specifications</i>	<i>11</i>
9. Risk assessment & risk management	13
9.1 Crowd Capacity Review	13
9.2 Risk assessments	13
9.3 Weather Monitoring	13
10. Security	13
10.1 Crowd management	13
10.2 User Pays Police	14
10.3 Asset Protection	15
11. Safety and emergency planning	15
11.1 Lighting	15
11.2 Aquatic Safety	15
11.3 Emergency planning	16
11.4 Fire safety	16
11.5 Scenario planning	16
12. Medical Presence and Harm Minimisation	16
12.1 3-tier event medical and harm minimisation team	16
12.2 NSW Ambulance Service	17
12.2 Free Water	17
12.3 Sunscreen and Earplugs	17
13. Food and Drinks	17
13.1 Food Service	17
13.2 Alcohol Management Plan (AMP)	17
15. Waste Management	18
16. Water and waste water management plan	18

17. Transport, Traffic and Pedestrian Management Plan (TMP)	19
18. Noise management plan	19
18.1 Noise Impact Statement & Management Plan	19
18.2 Community Notification	19
18.3 Individual Notification and Consultation	20
19. Penrith Railway Station	20
20. Power Generation	20
21. Amusements and Rides	20
21.1 Helicopter Rides	20
21.2 Jet Ski Rides	21
21.3 Jetpack Rides	21
23. Accessibility Policy	21

Defqon.1 2015 site layout at the Sydney International Regatta Centre



1. Introduction and New Features in 2015

Due to the continued growth in camping numbers, the decision has been made to move camping to the Northern Bank of the Sydney International Regatta Centre (SIRC), and provide a temporary bridge for campers to access the festival.

This year will also be the first time the campers have had a dedicated stage, at which we will hold the inaugural 'Defqon.1 Gathering'. A small DJ set up will also be provided for light entertainment while the camping stage is not in operation.

An area will also be reserved for campers to swim in the lake during the day, located at T-5.

As camping is a separate site, all amenities will be provided at the campgrounds, including: bars, food, medical, markets, toilets, ablutions etc.

Event plans are being prepared for 22,000 – 25,000 attendance, with the exception of the Traffic Management Plan, which can accommodate up to 30,000 people.

2. Operations Overview

Event Date:	Defqon.1 Festival Event: Saturday 19th September 2015 Defqon.1 Camping: 11:00 Friday 18th - 12:00 Sunday 20th September 2015		
Main Event Timings:	10:30 Gates Open		
	11:00 Event Commences		
	22:00 End Show / Main Stage Finished		
	23:00 Event Finished		
Event Duration:	12 Hours (Patron Attendance)		
Location:	Sydney International Regatta Centre (SIRC); SIRC island, car parking areas, internal roads and buildings		
Expected Attendance:	Between 22,000 – 25,000		
Demographic	18+ Only; 55% Male 43% Female; Expected Age Range 18-32		
Ticket Price	GA	1 st Release	\$170
	GA	2 nd Release	\$175
	VIP	1 st Release	\$270
	VIP	2 nd Release	\$275
Licensing:	Licensed to sell alcohol as per Alcohol Management Plan		
Environment:	Grassed and Wooded Areas, Waterlines Fenced and Controlled, Vehicle Access Available		

Control Measures:	Fully Secured Site, Fencing Supported by Security and Accreditation Measures
Safety Measures:	Full First Aid Support, Fire Safety Planning, Evacuation Planning, and Patron Monitoring.
Communications:	Internal: Radio and Mobile Comms, External: SMS, Public Address, Visual, Hardline Phone

3. Stage operations

All stages at Defqon.1 festival commence entertainment at 11 AM. The stages shutdown at differing times, as indicated in the table below starting with the grandstand stage (Stage 5 Magenta) which shuts down at 9 PM.

Three out of the 8 stages will continue offering featured entertainment until 11 PM – Stages 2, 3 and 4. These are all medium-sized stages.

Table 3.1 Stage operations

Stage number on site map	Stage colour code	Map coordinates	Stage scale	Orientation	Hours of operation
1	Red	N7	Main stage	N	11:00AM-10:00PM
2	Black	H8	Medium	NE	11:00AM-11:00PM
3	Blue	H11	Medium	ENE	11:00AM-10:00PM
4	White	Z10	Medium	W	11:00AM-11:00PM
5	Magenta	O12	Grand-stand	N	11:00AM-9:00PM
6	Purple	F11	Medium	ENE	11:00AM-10:00PM
7	Green	Z8	Medium	W	11:00AM-11:00PM
8	Camping	Y-5	Medium	NW	Friday 6:00-11:00PM Saturday 11:00AM - 7:00PM

In addition, a mobile DJ BOOTH will operate at the campgrounds during the following times:

Friday 12 midday-6:00PM

Saturday 8:00AM-11:00AM

4. Production key dates

SIRC Venue	Access Dates	Monday 31 August - Friday 25 September 2015
	Daily Access Times	07:00 - 23:00
Camp Site	Access Dates	Monday 31 August - Friday 25 September 2015
	Daily Access Times	07:00 - 17:30
	Truck Movements	Approximately 60
	Vehicle Access	Access for Supplier, Camping Coordinator, Site, and Emergency vehicles
	Security Measures	See Asset Protection and Perimeter Management Plan and Event Security Management Plan
	Bridge Construction	Bridge will be constructed in the first week of the build.

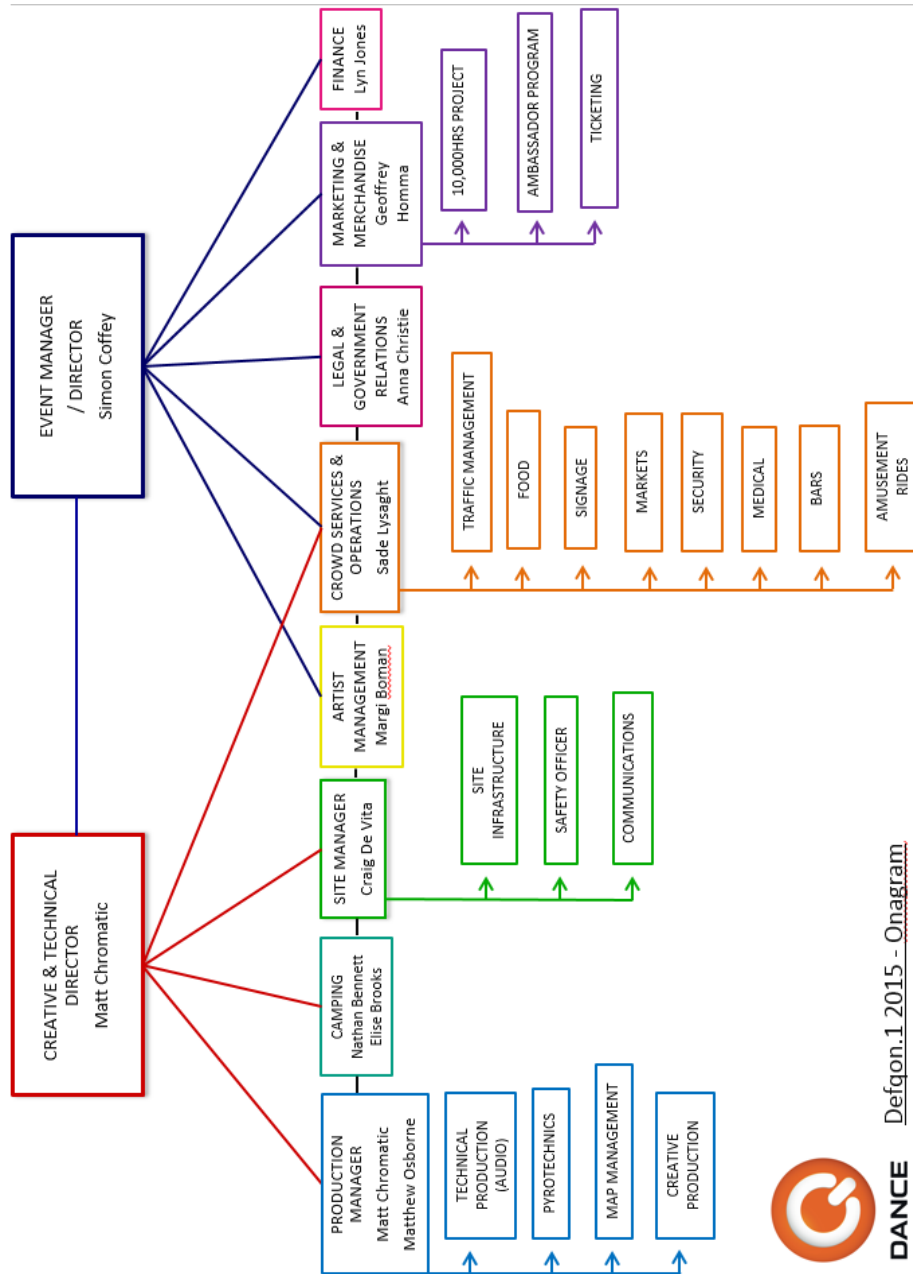
5. Site Plans

Annexed hereto are the following site maps (not including detailed Traffic Control Plan maps included in the Transport, Traffic and Pedestrian Management Plan):

1. Wide map V.2
2. Camping Ingress Map V.2
3. Festival Entry Map V.2
4. Camping extension V.2
5. Wide view with North Bank V.2
6. Full Event Map V.2

6. Organisation and Management

Below is the organisational chart indicating hierarchy of responsibility for Defqon.1. This organisational chart is compatible with the 'Emergency Control Centre' referred to in the Emergency Response Plan.



Defqon.1 2015 - Onagram

7. Conditions of Entry

- There are no pass outs.
- No admission after 7 PM
- Q-dance maintains a **ZERO TOLERANCE** drug policy
- This is an over 18's event. Entry will be refused to persons under the age of 18
- Admission to the event will be granted only upon presentation of a valid admission ticket
- It is a condition of entry that all patrons present a valid and acceptable form of photo identification. Acceptable forms of ID are limited to Australian Drivers' License, Passports or RTA endorsed proof of age card
- As this is a licensed venue, entry will be refused to people who are intoxicated and / or disorderly
- Any patron ejected, or refused entry gives permission for their details to be recorded, and photograph to be taken. Patrons ejected, or refused entry will receive a **Ban Notice, excluding them from all Q-dance events for a period of seven (7) years**

- Patrons choosing to bring valuables to the premises do so at their own risk
- Any wristband removed from wrist or tampered with will be rendered invalid and will not be replaced. Lost or missing wristbands will not be replaced
- Any patron may be required to undergo a search, pat down, bag check and / or metal detector search when they enter and / or during the event. A person who refuses to undergo such a search, pat down and / or bag check may be prohibited from entering the event without being entitled to a refund of the admission fee, or such a visitor may be immediately removed from the event
- Q-dance Australia reserves the right to refuse entry to, or remove any persons who breach the Conditions of Entry

- Entry will be refused to all members of the following groups – LADS, Bandidos, Black Uhlands, Coffin Cheaters, Comanchero, Finks, Fourth Reich, Gladiators, Gypsy Jokers, Hells Angels, Highway 61, Life & Death, Lone Wolf, Mobshitters, Nomads, Odins Warriors, Outcasts, Outlaws, Phoenix Rebels, Scorpions, Notorious or any similar group
- **No gang associated behaviour, jewellery, accessories or clothing that displays or infers by form of word, colours, logo, symbol or otherwise that they are a member of one of the above listed groups or similar (Striped polo shirts or skin baseball caps, Nautica, Canterbury shorts etc) ANYONE WEARING PROHIBITED CLOTHING INSIDE THE VENUE WILL BE REMOVED FROM THE EVENT**

- Smoking at this event is restricted to "smoking areas"
- There is no swimming at this event. Any patron who enters the water will be removed from the event
- The use of earplugs is recommended if long-term hearing loss is of concern to you. The Promoters of the event will not be held liable for any hearing damage or loss.

PROHIBITED ITEMS

- Alcohol and / or illegal drugs
- Food
- All prescription drugs will be assessed and reviewed by our trained medical personnel. Their decision on all items will be final. If in doubt then please carry your prescription with you.
- Camera stands and mega zoom lenses.
- Special permission needs to be granted by Q-dance to bring professional video equipment.

- ALL LIQUIDS including but not limited to, sunscreen, eye drops, perfumes, aftershaves, unsealed and sealed drink containers, roll on deodorant.
- Umbrellas
- Furniture, including fold up chairs
- BBQ's
- Animals, except guide dogs or other animals trained to provide mobility assistance
- Balls, sporting equipment, bicycles, skateboards, skates or scooters
- Glass bottles, aluminium cans, metal containers or breakable containers
- Offensive weapons, including potential missiles
- Fireworks, matches, flares, highly flammable or explosive substances
- Large chains or spiked bracelets
- Wallet chains
- Laser Pens
- Large Eskies
- Banners, flags, badges or symbols or any other signs or materials bearing offensive, malicious, hurtful, provocative or political text or representations
- Football shirts, club insignia or clothing that suggests membership or allegiance to a gang
- Markers, "textas", aerosol cans and all graffiti tools are strictly prohibited.

8. Temporary Structures

8.1 Major and custom designed structures

These structures include:

Bridge connecting SIRC island and camping area on northern banks of warm up lake

Red stage (main stage)

Black stage

Blue stage

Green stage

Purple stage

Magenta stage

White stage

VIP deck

Front-of-house deck

Lighting and signage towers

Drawings are **annexed hereto**.

8.2 Small Tents

Smaller hired tents are used for services, such as merchandising, food stalls etc. As the contract has yet to be finalised, Q-dance will provide details to Penrith City Council within one month of the event, including design certificates, Safe Work Method Statements and Insurance.

8.3 New Camping Bridge

To give campers access to the Northern Bank, we are constructing an overwater, temporary bridge, over 160m in length. Please see the operations table below.

Table 8.3 Camping bridge specifications

	Dimensions	Excluding entrance gangways the bridge is 161m x 3.35m, comprised of 13 barges bound together. Barges are 12.2m x 3.35m each. 2 x gangways, one for each end, 1.9m wide
--	------------	-------------------------------------------------------------------------------------------------------------------------------------------------------------------------------

Bridge Specifications	Flooring	<p>Either ProFloor or Teraplas will be used on the deck of the barges.</p> <p>Flooring is used to reduce the heat absorption, and provide a stable surface to walk on as there are some bolts positioned on the deck of the barges, which present trip hazards.</p>		
	Concrete Mooring Blocks	<ul style="list-style-type: none"> – Concrete blocks will be used for mooring, and are weighted at 1 tonne each. – As the blocks are made of the same materials that form part of the lakes ecosystem, once in place aquatic vegetation will grow around the concrete and form part of the eco system in a similar way artificial reefs are created. – It is intended that once the mooring blocks are placed into the practice lake, they will remain there for future events. Further this will allow the venue to use the blocks for any future needs the venue has for them. 		
	Opening Times	Friday	Island to Camp Only: 11:00 – 21:00	
		Saturday	Camp to Island Only: 10:30 – 11:30	
			Both Directions: 11:30 – 22:00 Island to Camp Only: 22:00 – 23:30	
Sunday	Camp to Island Only: 06:00 – 13:00			
Capacity & Bridge Flow During Peak Periods	<p>Crowd movement onto the bridge is controlled by Security, who will ensure a minimum 1 second space between each person walking onto the bridge.</p> <p>Using Fruin's Level of Service (LoS) guidelines, at peak, one direction only periods, the bridge would be at LoS-C:</p> <p>“Flow rate 33 to 49 people per metre, per minute. Walking speeds are partially restricted; passing is restricted but possible with manoeuvring; crossing and reverse movements are restricted and require significant manoeuvring to avoid conflict, flow is reasonably fluid.”</p> <p>At all other times the bridge will operate under Fruin's LoS-A:</p> <p>“Flow rate less than 23 people per minute. Virtually unrestricted choice of speed, minimum manoeuvring to pass, crossing and reverse movements unrestricted.”</p>			
Checkpoint Procedures	<p>Guards will be placed on both ends of the bridge to check accreditation and RSA.</p> <p>Single gangway (width TBC) with fencing will be installed allow patrons to step onto bridge.</p> <p>Crowd control barriers with snaking queue system will be installed on approach to gangways.</p> <p>This will increase in the evening.</p>			

Harm Minimisation Strategies	Strip Lighting	Strip lighting will be used to highlight the edges at night.
	Lighting Plan	Please see attached Camp Lighting Plan
	Aquatic Safety	In order to ensure the safety of all, life rings will be placed along the length, with lifeguards on duty and lifeboats patrolling the length of the walkway.
	Signage	Signs will be placed at both ends of the bridge (visible upon entry and exit), and at points along the way. Signs will indicate the direction of traffic flow, bridge opening times, and water safety messages.
	Security	Each bridge end will have a guard, and two guards will roam the bridge.
	Medic Access	Medics will be given priority access to the bridge, should the need to cross arise. Security escorts will be used for emergencies during peak periods.

9. Risk assessment & risk management

9.1 Crowd Capacity Review

Annexed.

9.2 Risk assessments

Risk registers and risk assessments for Defqon.1 Festival and Defqon.1 Camping are **annexed**.

9.3 Weather Monitoring

The Safety Officer of the event will be responsible for the monitoring and reporting of weather to the crowd services coordinator and event director. Additionally, any concerns regarding the weather are to be discussed with all interested parties at services meetings to ensure that contingency planning can be effectively managed.

10. Security

10.1 Crowd management

The security functions are split between two companies:

I-SEC - Crowd security, Festival and Camping - Event Security Management Plan

Nepean Regional Security - Perimeter Security Management Plan

Both plans annexed hereto.

As in previous years, Nepean Regional Security will perform the role of asset protection throughout bump-in, event and bump-out.

The I-SEC Group will be responsible for the following roles during the event:

1. Enforcing of the Conditions of Attending.
2. Screening of patrons upon entry to the event to ensure that the integrity of the licensed area is maintained and that no prohibited items are brought onto the site.
3. Searching of personal belongings and a patron's person to ensure that no prohibited items are brought onto the event site.
4. Maintenance of the integrity of the event site perimeter, including the surrounding waterways.
5. Patrolling of the event site to ensure that the rules and regulations of the site are being adhered to.
6. Being visible at all times to ensure that patrons have a point of contact for any distressing issues.
7. Responding to any requests for assistance from a patron in distress
8. Referring of patrons to other event services including (but not limited to), First Aid, Police, HQ Areas.
9. Maintaining the RSA principles set out in the License Conditions for the event.
10. Crowd Management for the Event.
11. Evacuation and management of patrons in the event of an emergency.
12. Inter Patron Dispute resolution as required.
13. Eviction of Patrons that have not responded to requests to adhere to the conditions of attending.
14. Providing feedback to the organiser regarding:
 - a. The security of the event site
 - b. Vulnerabilities in the infrastructure / planning / execution pertaining to security
 - c. Any potential concerns that could result in a crowd management issue.

Guards chosen for roles at Defqon.1 should be well mannered and moderate in their approach to security issues.

A NSW Police drug operation is planned for the Festival as well as the campsite to ensure absolute integrity of the operation. This would include a pre-event sweep of the event site and an operation that targets patrons entering the site from the camping area. Security management will again include rigorous entry screening of all ticket-holders and staff at Defqon.1.

The event site is naturally protected by two bridge points, which will be monitored for the duration of the event. A security detail and control point will be maintained at these two areas for the duration of the event. Radio contact with the HQ will be available for the security team should any issues arise.

10.2 User Pays Police

User pays police, as approved by Penrith Police will be used at all times. This is in addition to the Police operation, including sniffer dogs, which will screen entry to the event.

10.3 Asset Protection

As this event has a four-week construction phase, Nepean Regional Security provides security throughout the duration, ensuring no unlawful entry onto the building site, and asset protection. This applies to bump-in and bump-out.

11. Safety and emergency planning

11.1 Lighting

Adequate lighting after dark is an essential aspect of public safety. The principles for the lighting plan are as follows:

1. High Visibility Lighting
 - a. Waterways
 - b. Perimeter Fencing & Surrounds
 - c. High Density Wooded Areas within the Camp Site
 - d. High Traffic Walkways
 - e. Alcohol Service Areas

2. Medium Visibility Lighting (Filtered)
 - a. Camping Areas
 - b. Communal (Social) Areas
 - c. Entertainment Areas
 - d. Decoration and Site Dressing (Coloured)

A detailed Lighting Plan for camping is **annexed**.

11.2 Aquatic Safety

Due to the event site being bordered by a large waterway, lifeguards will be employed for the duration of the event to monitor the waterways. It is important to note that patrons will be advised repeatedly that 'any attempt to enter the water will be met with eviction from the site'. This will be via the Q-dance website, and in other event literature including the event promotional magazine. Additionally, signage, fencing, and security will be in place to prevent any passage or intent to enter the water.

Life Guards will be in place for the duration of the event, with vessels on the warm-up and competition lakes.

Site lighting will be in place to effectively illuminate the water during the night and maintain visibility for the guards.

Life Guards will be patched into the Security network to assist in the coordination of a rescue if required.

A detailed Aquatic Safety Plan is submitted as **Annexure**.

11.3 Emergency planning

The Emergency Management Plan for the Defqon.1 festival is included as **Annexure**.

Detailed monitoring of patron locations and attendance levels will be kept at all times by security personnel to ensure that accounting for patrons in the event of an evacuation is efficient and accurate.

11.4 Fire safety

The Rural Fire Service will be present during Defqon.1, including a minimum of two fire trucks, a fire-fighting boat and at least one smaller, fire fighting vehicle for access to camping areas. Fire Safety and Fire fighting equipment will be located onsite should the need arise for its use.

Advice has been sought from SIRC venue management and NSW Fire Brigade as to the placement and signage for fire safety equipment and incorporated into the Fire Fighting Equipment (FFE) Map. NOTE: The FFE map is not yet available.

11.5 Scenario planning

To ensure the effective implementation of the emergency response plan, if the case arises, a scenario-planning workshop is planned for late August, where several scenarios will be addressed by emergency services. This is an annual feature of Defqon.1 planning, and is attended by all emergency services, venue staff, organisers and key stakeholders.

A date has not yet been set for this workshop.

NSW Police have directed that the Scenario Planning Workshop is to include water rescue training exercises from the bridge and swimming areas.

12. Medical Presence and Harm Minimisation

12.1 3-tier event medical and harm minimisation team

First aid will be managed by three different contactors, to ensure all areas are adequately covered:

1. **Primary care – First Care Medical (FCM)** controls the medical tent, treat any walk-ins, and operate triage, and more serious conditions. Hospital transports are to be made from this point. Medical Commander assigned and given direct contact with Nepean Emergency Ward to coordinate and transports
2. **Secondary care – UniMed** roam the site in pairs to administer medical treatment and transport to the medical tent if required, as well as sit at various areas with medical buggies to allow for the fastest response time
3. **Tertiary care – Save-a-Mate (SAM)** to roam the site to monitor the crowd for drug and alcohol intoxication. A tent is also situated beside the medical tent to be used as a 'chill-out'

zone where patrons can have a snack, water, and sit while being monitored by trained staff.

The Defqon.1 Medical Plan and SAM Harm Minimisation Plan are submitted as **Annexures**.

12.2 NSW Ambulance Service

A representative of NSW Ambulance Service is present at the Event Control Centre, and two ambulances stand by at the venue throughout Defqon.1.

12.2 Free Water

To ensure that patrons do not suffer from dehydration, free water stations are provided around the site for patrons to refill their plastic bottles. Free water is also available at all bars.

12.3 Sunscreen and Earplugs

It is widely advertised to patrons that free sunscreen and earplugs are available at the First Aid tent.

13. Food and Drinks

13.1 Food Service

As in previous years, plentiful and varied selection of foods is provided by the Regatta Kitchen, under the management of Mr Vince Capolupo, who is also the licensee at the SIRC.

This will include hot foods, fresh salads, sandwiches, and ice creams.

Food safety procedures for the Festival are the same as those applicable to events generally at the SIRC.

A detailed food safety plan is not yet available for the camping side of Defqon.1. This will be available end May.

13.2 Alcohol Management Plan (AMP)

The Alcohol Management Plan for Defqon.1 is not yet available. This will be available end May.

14. Sanitary facilities

The following is the toilet provision plan, which is in addition to the permanent toilets on site, which are used by staff only. This ratio is at least equal or better than that specified by former Clause 34 of the Defqon.1 DA, which is based on the Building Code of Australia.

Hand-washing facilities are available in all toilet blocks.

There are two major toilet blocks on the island, and one at the camping areas, plus dedicated toilets for the VIP deck.

Disabled access toilets are available at the festival (GA - all areas access), VIP deck and Camping areas.

Toilets	Visitors per toilet minimum ratio	22,000	24,200
Male Cross Urinals (Assuming 4 Urinal Spaces per Multi Urinal)	90	31	34
Male Cubicle Toilets	300	37	40
Female Cubicle	60	183	202
Wheelchair Accessible	10,000	3	3

15. Waste Management

SIRC management has produced an event specific Waste, cleaning & recycling plan: **see annexure.**

Furthermore, with the goal of reducing construction and demolition waste going to landfill, Q-dance Australia has secured the services of 2 team members whose role is dedicated to waste education, monitoring of the construction and demolition waste bins, and reporting to the Defqon.1 event manager about ways of diverting waste from landfill.

One of these waste minimisation officers will be on-site for the entire duration of construction and knockdown of the event structures, and an assistant hired to manage the campgrounds.

16. Water and waste water management plan

Defqon.1 Camping 2015 will be conducted at a greenfield site north of the warmup lake with no water supply or waste water facilities whatsoever.

A detailed plan ensuring potable water for camping patrons (drinking and showering), food preparation (Regatta Kitchen activities and any other food and beverage providers) is being prepared, including chain of responsibility, permits to supply from Sydney Water mains, access to water, means of transportation, storage on site, plumbing arrangements etc.

Similarly, waste water arrangements are still in planning and will be submitted by end of May.

17. Transport, Traffic and Pedestrian Management Plan (TMP)

The Defqon.1 TMP has been approved by the Penrith local traffic committee. A copy of the TMP and the Traffic Control Plans is also **annexed** hereto.

18. Noise management plan

18.1 Noise Impact Statement & Management Plan

A detailed Sound Plan has been prepared by Auditoria Pty Ltd, based on the 2015 Site Plan. It takes into account the relative positions and orientation of the stages.

18.2 Community Notification

Q-dance Australia will print and organise delivery of notifications to 28,500 homes, which may be affected, including some homes not in Penrith, but in Blue Mountains City Council area.

The areas identified for notification by Q-dance Australia are bounded:

East: The Northern Road

North: Devlin Road, Londonderry *NOTE This is in contradiction to the Defqon.1 camping plan which stated that Church Lane, Castlereagh would be the northernmost boundary for notifications- this was revised subsequently to the lodgement of that document

South: M4

West: Yellow Rock

The text of the notification letter is as follows:



QDANCE

A LETTER FROM Q-DANCE AUSTRALIA

The **DEFQON.1 CAMPING & MUSIC FESTIVAL** will take place again at the Sydney International Regatta Centre on **Friday, 18th-Saturday 19th September**, during the hours of 11AM-11PM.

If you have any questions or concerns, please call the Community Hotline on
XXXXXXXXXX or email Q-dance Australia at email : **community@q-**
dance.com.au

There will be fireworks at the finale on the Saturday night, so keep your pets inside!

You can call the Community Hotline at any time during the event if you have anything to report to the organisers.

We thank you for your continued support for Penrith's iconic youth event. Our sound management team will continue to monitor the event closely, and the traffic management team will be working to maintain smooth flowing traffic.

If would like to attend the festival, please go to www.Moshtix.com.au

18.3 Individual Notification and Consultation

It is customary for Q-dance Australia to consult individually with a number of nearby residents, and businesses in Leland Street, and other potentially affected precincts on the route from Penrith Railway Station to the SIRC concerning the impacts of Defqon.1 on them, including sound impacts, litter or any other matter arising from the event. This will continue in 2015.

19. Penrith Railway Station

Event activities at Penrith railway station are critical to the smooth running of the event. The Defqon.1 2015 TMP has been designed to suit the station layout. Sydney Trains has offered the use of its land for locating temporary toilets, water station, medic, and staff tent.

Q-dance Australia has a dedicated Penrith Station Coordinator, who is responsible for coordinating transportation, crowd services, communications with Sydney Trains and security, liaison with NSW Police etc. The Penrith Station Coordinator reports to the Defqon.1 Event Director.

Facilities provided at Penrith Station include free water, medics on hand, security, transport cpntrrollersand information

A Penrith Station Plan is submitted as **Annexure**.

20. Power Generation

All generators used at Defqon.1 are powered by biofuels.

21. Amusements and Rides

21.1 Helicopter Rides

It is customary for Q-dance to employ a helicopter for multiple uses including joy rides for patrons, transportation of VIPs, and aerial photography. Q-dance has engaged Sydney Helicopters as the helicopter contractor. Helicopters will operate from 11AM to 18:00. Hot re-fuelling arrangements, and the flight path are included **as annexure**.

The flight path must not intrude into the military airspace and is required to adhere to a number of CASA stipulations, including no hovering over the crowd.

21.2 Jet Ski Rides

Jet ski rides for patrons will be offered between the hours of 11:00 AM and 5:00 PM. H2O Events will be conducting the Jet Ski rides, as in 2014. Patrons will be able to purchase Jet Ski rides with tokens.

21.3 Jetpack Rides

Jetpack rides will return again this year. Patrons will exchange tokens for jetpack training, and a minimum of five minutes flying time.

22. Pyrotechnics and camp fires

Pyrotechnics will include stage-launched and barge-launched displays, in accordance with WorkCover licences. These will include aerial fireworks and flame pots.

In addition, it is proposed to introduce controlled camp fires under the management and control of Howard & Sons, the Defqon.1 pyrotechnics providers.

These camp fires will be fenced and supervised at all times by Howards. If there is a state of high fire danger or total fire ban, the camp fires will not proceed.

A draft Pyrotechnics manual has been supplied by Howard & Sons and is **annexed**. However, it does not include details of the camp fires.

These will be made available to RFS and NSW Police by end of May.

23. Accessibility Policy

Q-dance aims to make Defqon.1 friendly to the disabled, and extends its assistance to enable disabled patrons to enjoy the event to the best of their ability.

Since 2009, the range of disabled people who attended Defqon.1 include sight impaired, deaf, and wheelchair-bound patrons.

Q-dance through its website reaches out to patrons who may need assistance, and ensure that not only the disabled person but their companion, is given the utmost assistance.

With respect to the VIP deck lift, procedures are in place equivalent to an alternative solution to the requirement of the Building Code of Australia

- Guard to be present at all times, and to be briefed on the importance of the service
- Only disabled people and their companions allowed to use lift
- No disabled people to be kept waiting to use lift

- If disabled person has a companion, courtesy to be extended to them to ensure they are not



Health and Safety Policy

Commitment

Q-Dance Australia (QDA) applies best practice in event management and contemporary risk management approaches to their festival and business operations, and is committed to providing and maintaining a safe and healthy work environment for our people, workers and patrons.

Objectives

To fulfill our commitment we will:

- Ensure compliance with all legislative requirements
- Provide and maintain a safe working environment
- Develop, maintain and communicate safe systems of work
- Apply robust risk, safety and emergency management plans
- Actively strive to apply continual improvement to safety
- Actively strive to prevent injury and ill-health
- Ensure that timely return to work plans are applied for injured workers

Responsibilities

The QDA Director and Executive Team have the overall responsibility to provide a safe and healthy workplace. Site Managers, Production Managers and other accountable persons are responsible for implementing the QDA policy and ensuring that:

- Risk, safety and emergency plans are actively applied
- Workers apply safe systems of work at all times
- Safety is central to all aspects of event planning

Our contractors and workers are responsible for:

- Taking reasonable care for their own safety and that of their co-workers
- Maintaining the workplace in a safe condition
- Undertaking work in accordance with safe work procedures
- Following QDA and Venue health and safety guidelines
- Participating in scheduled training and information sessions
- Proactively rectify and/or report hazards and near misses
- Reporting accidents, incidents or injury

Consultation

QDA is committed to consultation with our contractors, workers and event stakeholders to ensure that this policy, and any associated safety procedures operate effectively.

Review

This policy will be reviewed annually as part of our internal management review process.

Approval

This policy has been approved by:

Simon Coffey
Managing Director
Q-Dance Australia

Approval Date:

13-5-15

Next Review Date:

separated

24. Q-dance Work Health & Safety Policy, May 2015