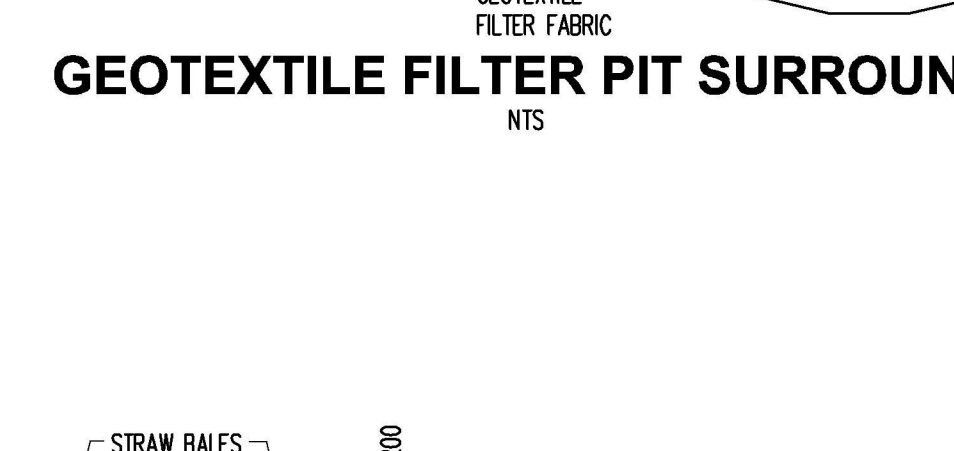
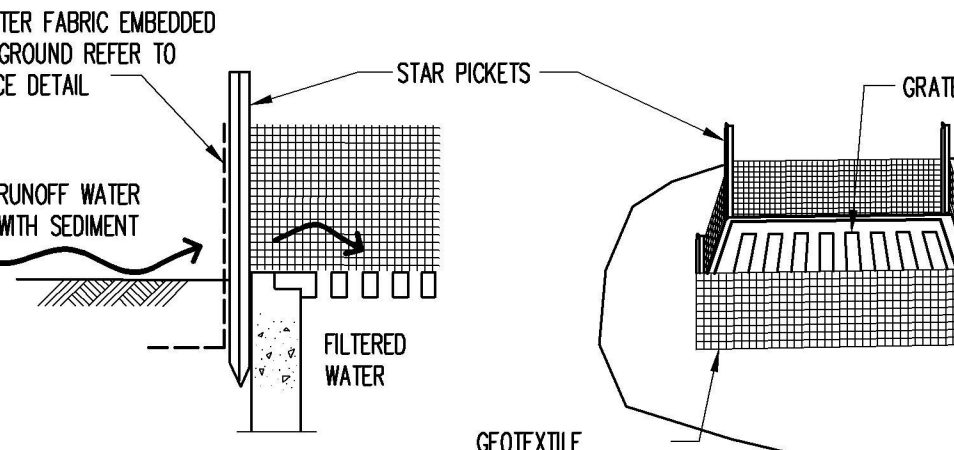
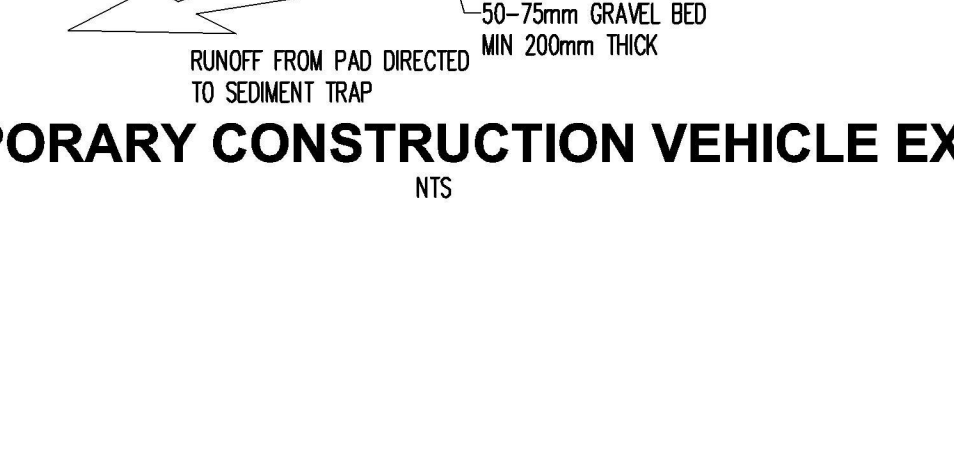
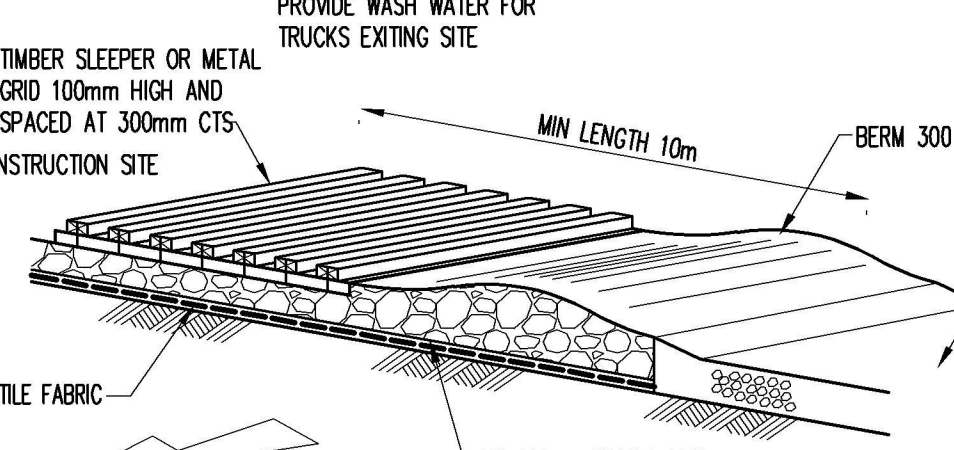
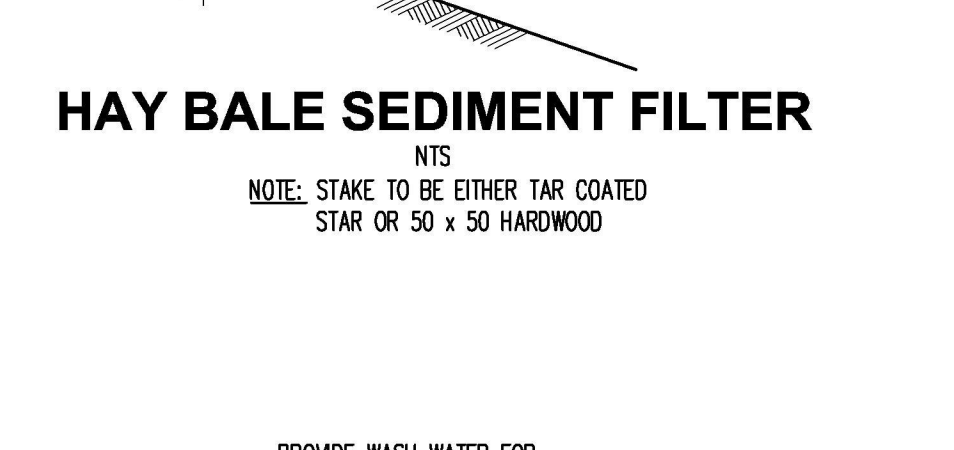
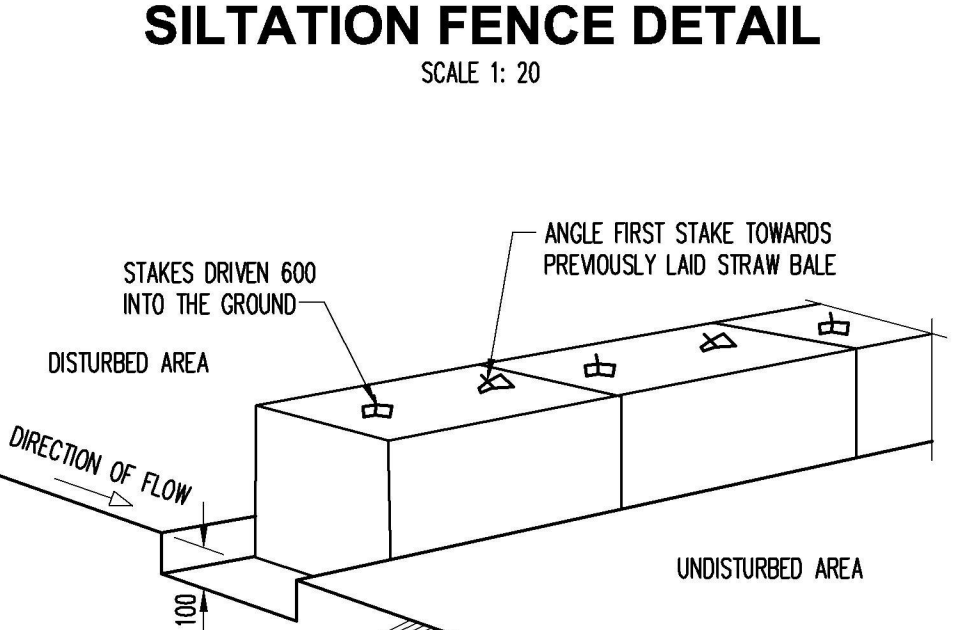
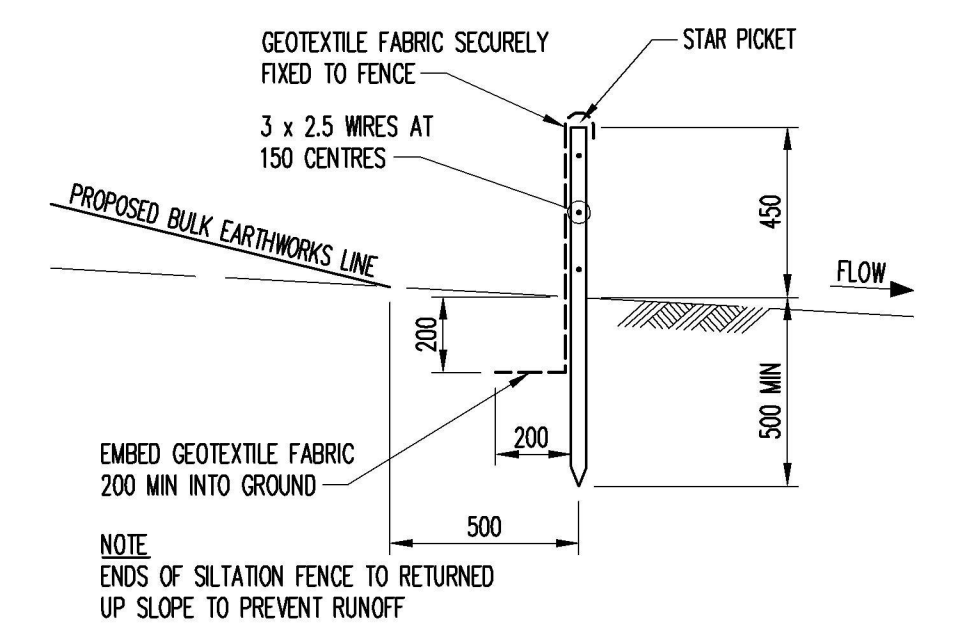
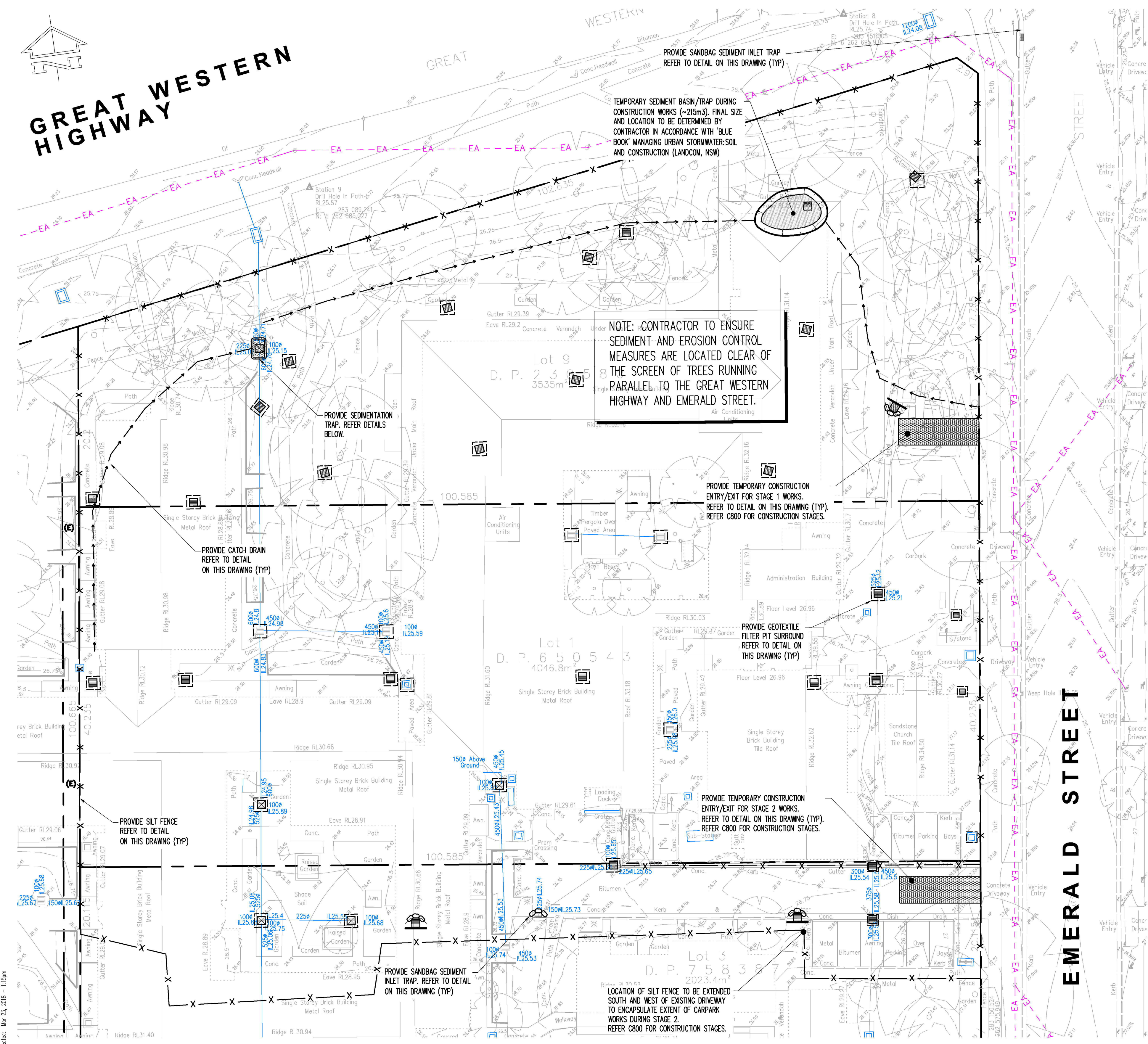


# GREAT WESTERN HIGHWAY



This drawing is copyright and is the property of TAYLOR THOMSON WHITTING (NSW) Pty Ltd and must not be used without authorisation. THIS DRAWING TO BE READ IN CONJUNCTION WITH ALL RELEVANT NOTES ON DRAWING C000.

## EROSION AND SEDIMENT CONTROL NOTES

- All work shall be generally carried out in accordance with:
  - Local authority requirements,
  - EPA - Pollution control manual for urban stormwater,
  - LANDCOM NSW - Managing Urban Stormwater: Soils and Construction ("Blue Book").
- Erosion and sediment control drawings and notes are provided for the whole of the works. Should the Contractor stage these works then the design may be required to be modified. Variation to these details may require approval by the relevant authorities. The erosion and sediment control plan shall be implemented and adapted to meet the varying situations as work on site progresses.
- Maintain all erosion and sediment control devices to the satisfaction of the superintendent and the local authority.
- When stormwater pits are constructed prevent site runoff entering the pits unless silt fences are erected around pits.
- Minimise the area of site being disturbed at any one time.
- Protect all stockpiles of materials from scour and erosion. Do not stockpile loose material in roadways, near drainage pits or in watercourses.
- All soil and water control measures are to be put back in place at the end of each working day, and modified to best suit site conditions.
- Control water from upstream of the site such that it does not enter the disturbed site.
- All construction vehicles shall enter and exit the site via the temporary construction entry/exit.
- All vehicles leaving the site shall be cleaned and inspected before leaving.
- Maintain all stormwater pipes and pits clear of debris and sediment. Inspect stormwater system and clean out after each storm event.
- Clean out all erosion and sediment control devices after each storm event.

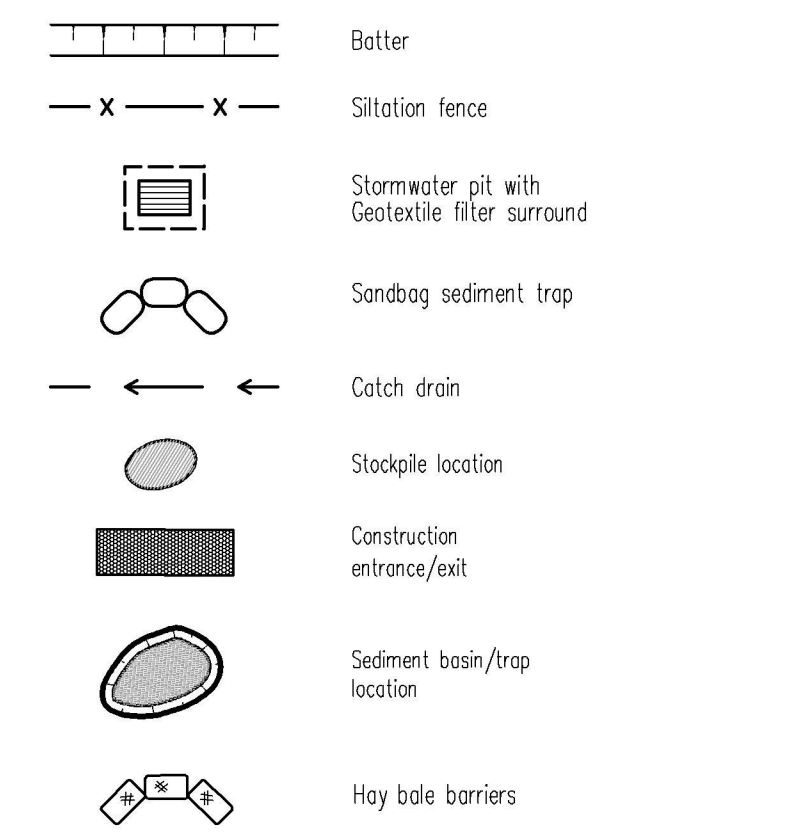
## Sequence Of Works

- Prior to commencement of excavation the following soil management devices must be installed.
  - Construct silt fences below the site and across all potential runoff sites.
  - Construct temporary construction entry/exit and divert runoff to suitable control systems.
  - Construct measures to divert upstream flows into existing stormwater system.
  - Construct sedimentation traps/basin including outlet control and overflow.
  - Construct turf lined swales.
  - Provide sandbag sediment traps upstream of existing pits.
- Construct geotextile filter pit surround around all proposed pits as they are constructed.
- On completion of pavement provide sand bag kerb inlet sediment traps around pits.
- Provide and maintain a strip of turf on both sides of all roads after the construction of kerbs.

## WATER QUALITY TESTING REQUIREMENTS

- Prior to discharge of site stormwater, groundwater and seepage water into council's stormwater system, contractors must undertake water quality tests in conjunction with a suitably qualified environmental consultant outlining the following:
- Compliance with the criteria of the Australian and New Zealand Guidelines for Fresh and Marine Water Quality (2000)
  - If required subject to the environmental consultants advice, provide remedial measures to improve the quality of water that is to be discharged into Council's storm water drainage system. This should include comments from a suitably qualified environmental consultant confirming the suitability of these remedial measures to manage the water discharged from the site into Council's storm water drainage system. Outlining the proposed, ongoing monitoring, contingency plans and validation program that will be in place to continually monitor the quality of water discharged from this site. This should outline the frequency of water quality testing that will be undertaken by a suitably qualified environmental consultant.

## EROSION AND SEDIMENT CONTROL LEGEND



**PRELIMINARY**

0 2.5 5 7.5 10 12.5 15 17.5 20m

1:250 A1 1:500 A3

Rev	Description	Eng	Draft	Date
P1	ISSUE FOR DA	WW	AW	23.03.18

Rev	Description	Eng	Draft	Date

Architect  
**Morrison Design Partnership Architects**  
 Level 3, Suite 302/ 69 Christie Street  
 St Leonards NSW 2065  
 Phone: (02) 9966 5566  
 www.mdp.com.au

Civil Engineer  
  
 612 9439 7288 | 48 Chandos Street St Leonards NSW 2065

Project  
**EDINGLASSIE VILLAGE, EMU PLANS**

Sheet Subject  
**EROSION & SEDIMENT CONTROL PLAN AND DETAILS**

Scale: A1 1:250 Drawn AW Authorised  
 Job No 141456 Drawing No C700 Revision P1  
 Plot File Created: Mar 23, 2018 - 1:15pm