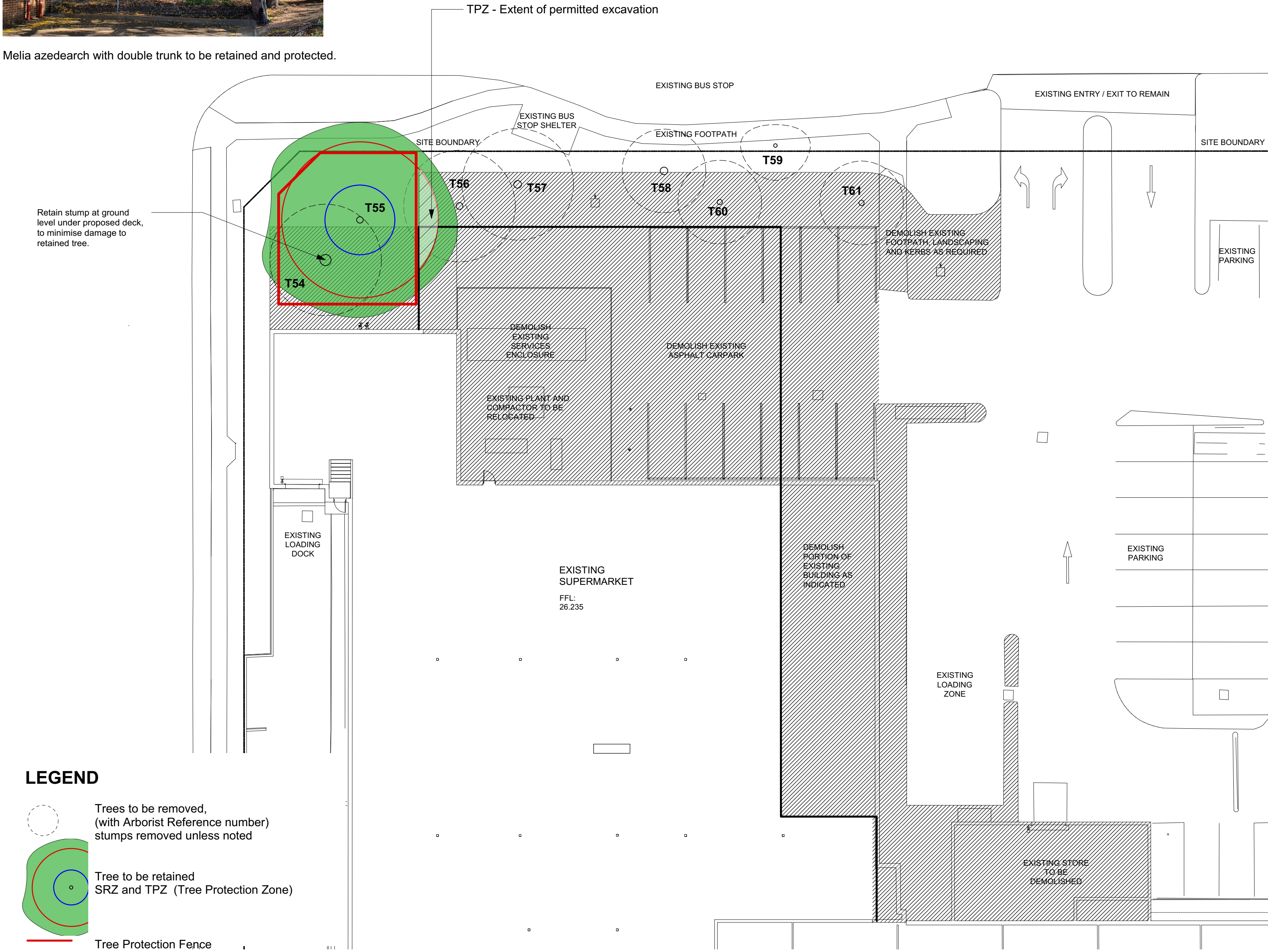




Melia azedearch with double trunk to be retained and protected.



Existing Tree Report								
ID	Botanical Name	Common Name	Average Spread	Height	DBH	Action	Notes	
T54	Corymbia maculata	Spotted Gum	8000	21000	800	Remove		
T55	Melia azedearch	White Cedar	14000	8000	465	Retain		
T56	Eucalyptus nicholii	Narrow leaved Peppermint	8000	18000	500	Remove		
T57	Eucalyptus nicholii	Narrow leaved peppermint	8000	20000	550	Remove		
T58	Corymbia maculata	Spotted Gum	6000	21000	550	Remove		
T59	Alanthus altissima	Tree of Heaven	4500	8000	250	Remove	Environmental weed	
T60	Alanthus altissima	Tree of heaven	6000	9000	380	Remove	Environmental weed	
T61	Eucalyptus saligna	Sydney Blue Gum	6000	9000	380	Remove		

TREE PROTECTION MEASURES
 (Refer to Arborist report prepared by treeIQ dated June 2020.)

Existing ground levels within the TPZ should be maintained with the exception of the Supermarket footprint. No over excavation beyond the proposed footprint of the Supermarket extension and service truck access lane should be undertaken.

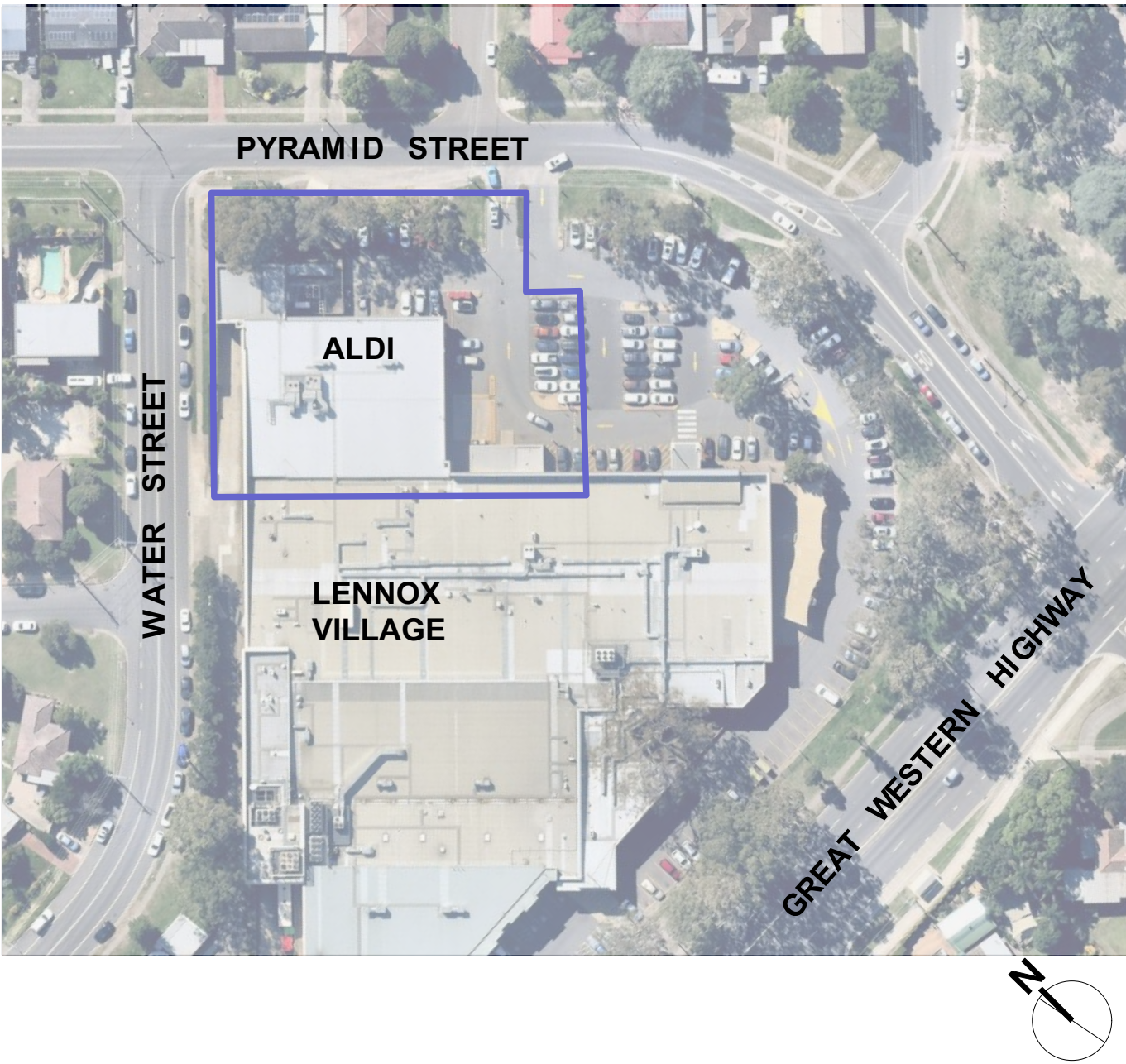
Existing pavement and kerbs within the TPZ should be left insitu where possible.

The condensor enclosure should be constructed above existing grade supported on isolated piered footings. Footings should be hand excavated to a minimum depth of 600mm and where roots >25mm diameter are present the footing should be relocated to enable the retention of significant roots (as determined by Project Arborist).

Any pruning to tree is to be supervised by Project Arborist.

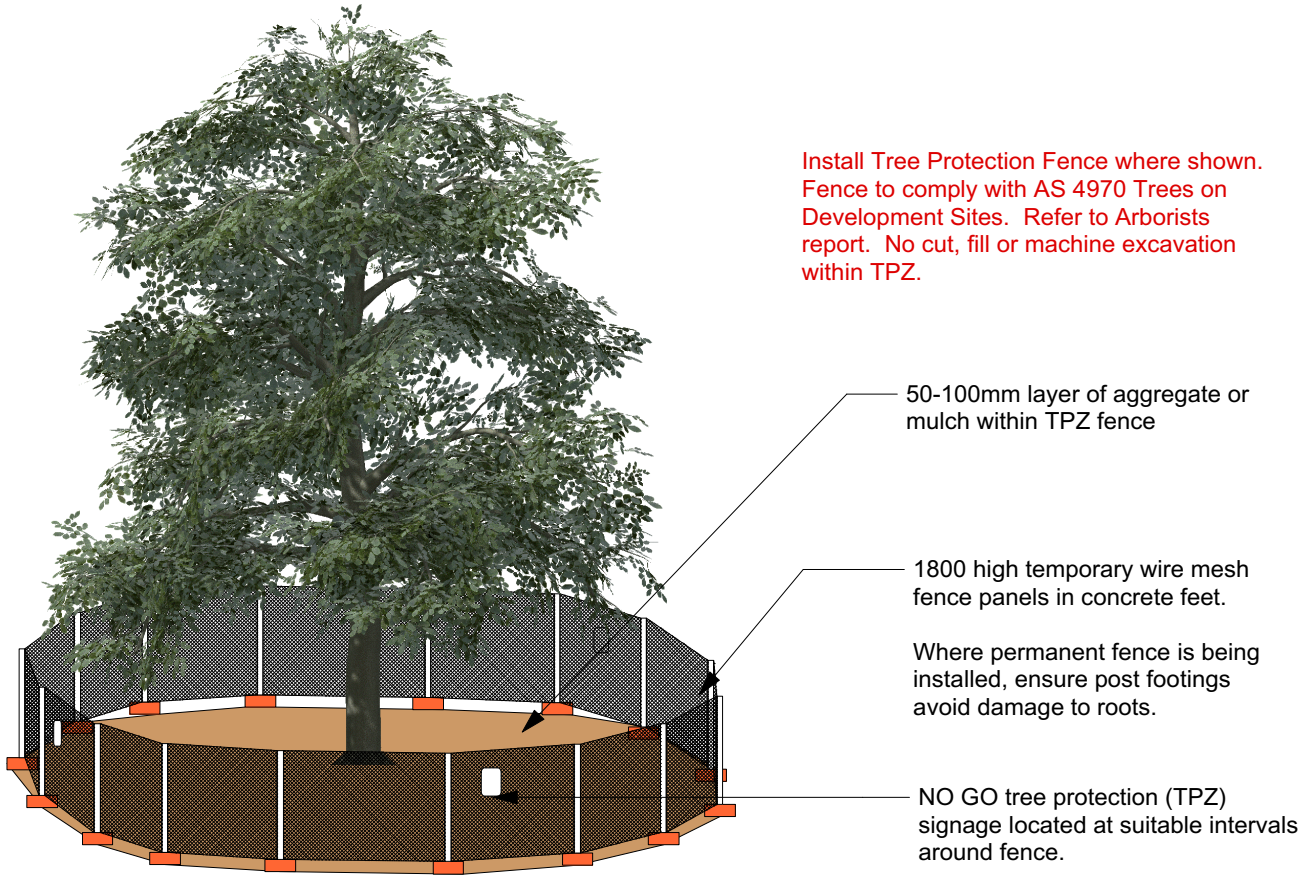
LENNOX VILLAGE - ALDI EXPANSION
 LANDSCAPE DA PACKAGE

Pyramid Street Emu Plains NSW



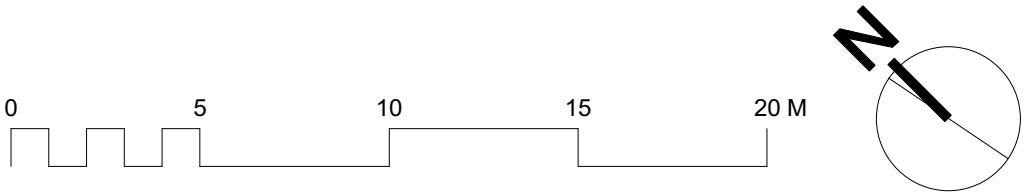
LANDSCAPE Drawing Register

Drawing No.	Drawing Title	Scale	Issue
L01	Site Location, Tree protection	1:200	B
L02	Landscape Site Plan	1:200	B
L03	Landscape Planting Plan	1:200	B



TREE PROTECTION FENCE DETAIL

Tree Protection Plan



ISSUE
 A 18/June 2020 Client review
 B 2 July 2020 For DA

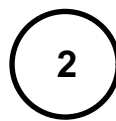
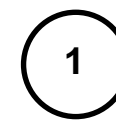
GROUP N
 Architecture, Interior, Landscape
 L6111-117 Devonshire Street
 Surry Hills NSW 2010
 T +61 2 93963546

Lindy Lean
 LANDSCAPE ARCHITECT
 AAILA Registered Landscape Architect #0423
 HLS Pty Ltd PO Box 313 Ashfield NSW
 phone 02 9797 9366

Lennox Village Shopping complex - Aldi Expansion
 Pyramid Street Emu Plains
 Client: Challenger Investment Partners

Landscape tree protection and Site location
 L 01

1:200 @A1
 2 July 2020
 status: for DA
 ISSUE: B



Landscape Concept Plan

Evergreen Native Trees



Callistemon citrinus

Melaleuca linarifolia

Shade Tolerant shrub



Prostanthera Minty

Low Shrubs, Grasses and Groundcovers



Myoporum parvifolium Yareena



Dianella Little Jess (Little Jess Flag Iris)



Lomandra Tanika



Rhagodia spinescens



Doryanthes excelsa (Gymea Lily)



Lomandra longifolia



Pennestetum Rubrum

Plant List						
ID	Qty	Common Name	Botanical Name	Pot Size	Mature Height	Mature Spread
Trees						
Mel lin	7	Flax-leaved Paperbark, Snow-in-summer	Melaleuca linearifolia	75 litre	5 - 10m	6 - 10m
Shrubs						
CaCi	11	Lemon-scented Bottlebrush	Callistemon citrinus	15 litre	1.5 - 3m	1.2 - 2.0m
Dor exc	5	Gymea Lily, Giant Lily	Doryanthes excelsa	5 litre	1.5 - 3m	1.2 - 2.0m
Pro rot	18	Round-leaved Mint Bush	Prostanthera rotundifolia	5 litre	1.5 - 3m	1.2 - 2.0m
Rha sin	33	Aussie Flatbush	Rhagodia spinescens	5 litre	0.6 - 0.75m	0.7 - 1.3m
Ground Covers						
Myo Yar	105	Carpet Spreading Myoporum	Myoporum parvifolium 'Yareena'	140mm	0.45 - 0.6m	0.9 - 1.2m
Grasses						
Dia Lit	17	Dwarf Blue Flax Lily	Dianella Little Jess	140mm	0.3 - 0.45m	0.3 - 0.5m
LoLo	82	Spiny-headed Mat-Rush	Lomandra longifolia	140mm	0.75 - 0.9m	0.9 - 1.2m
Lom Tan	166	Spiny-headed mat rush	Lomandra longifolia 'Tanika'	140mm	0.45 - 0.6m	0.6 - 0.9m
Pen rub	20	Purple Fountain Grass	Pennisetum 'Rubrum'	140mm	0.6 - 0.75m	0.3 - 0.6m

OUTLINE PLANTING SPECIFICATION

The Landscape Works are to be installed in accordance with Industry Best Practice by a suitably qualified and experienced horticultural professional, to the following minimum specification.

QUALIFICATIONS
All street trees and 100 litre trees or larger are to be planted by horticulturalist with minimum AQF level 3 qualification in Horticulture (Parks and Gardens).

WEED ERADICATION:
Eradicate all noxious and environmental weeds using a non-residual spray at the recommended rate, by environmentally acceptable methods. All imported materials including plants, topsoil, compost and mulch shall be free of weeds or weed seed.

SUBSOIL DRAINS
Install 100mm dia slotted ag pipe and sock as subsoil drains behind all kerbs, and where required. Connect to stormwater system. Install 100dia ag pipe and sock behind kerb and connect to stormwater pits.

TOPSOIL
Install imported topsoil to depths shown in details. Soils to be equivalent to:
Topsoil C1 - turf
Topsoil D2 - mass planting beds
Topsoil D4 - Street trees
as per "Soils for Landscape Development Specification" Simon Leake and Elke Haege.

FERTILISER
To each tree planting hole add slow release 21g biofertiliser planting tablet equal to Agsafe SuperMYCO (20:10:5 NPK).
For mass planting areas cultivate in Nutricote Standard Black (270 day 16:4:4:8.3 NPK) controlled release fertiliser. Quantity as per manufacturers recommendations.

PLANTS
Plants shall be vigorous, well established, hardened off, free from disease and insect pests, of good form consistent with species, not soft or forced, with large healthy root systems and no evidence of having been restricted or damaged. Trees to have single leaders and grown to NATSPEC specifications All plant material shall be in minimum pot sizes as shown on schedule. No plant to be installed taht has not been hardened off to local climatic conditions, or is otherwise inferior in quality.
Do not plant in extreme heat, cold, wind or rain. All plants are to be soaked thoroughly 1 hour prior to planting. Thoroughly water plants immediately after planting.

MULCH
Organic mulch shall be free from deleterious and extraneous matter, including soil, weeds, rocks, twigs and the like. Mulch shall be equivalent to Pine bark Nuggets by ANL, or Cottage Mulch by Solico, to match adjacent planting areas. Place mulch so it is not in contact with the stem of the plant.

TURF
Turf to verges as necessary after completion of earthworks and services. Obtain turf from a specialist grower of cultivated turf. Species to match existing. Turf shall be even in thickness and free from weeds. Lay turf over 100mm bed of cultivated topsoil in staggered pattern.

MASS PLANTING
Ensure surface of topsoil mixture grades to kerb. Excavate a hole for each plant 100 mm wider than plant container. Excavate a hole for each tree, backfill with topsoilcompost mixture, spread mulch and dish at plant stems.

STAKES AND TIES
Stakes to be 50 x 50 x 1800mm hardwood, straight, free from defects and pointed at one end. Drive 600mm into ground outside rootball. Fix 50mm hessian tie to stake to create tree guard using staples. On windward side of tree, or as necessary to stabilise tree, fix 50mm hessian tie to stake in a continuous loop and staple to stake.

CONCRETE EDGE
Form up and pour concrete edge where necessary between grass and planting areas. Top of edge to finish flush where it joins concrete kerb.

LANDSCAPE ESTABLISHMENT AND MAINTENANCE:
Plants: Maintain all plants in a healthy viable condition, including all watering, weeding, spraying for pests and diseases, pruning and re-mulching as necessary to achieve vigorous growth. Immediately replace any diseased or damaged plants at the Landscape Contractors cost. All plants are to be nurtured to industry best practice. All replacement plants are to be as originally specified.

Stakes: Stakes to be straightened and adjusted as necessary and removed when directed, or at the end of maintenance period.

Mulch: Maintain mulched surfaces and turf in a clean and tidy condition. Replace mulch where necessary with the same material to meet required depth.

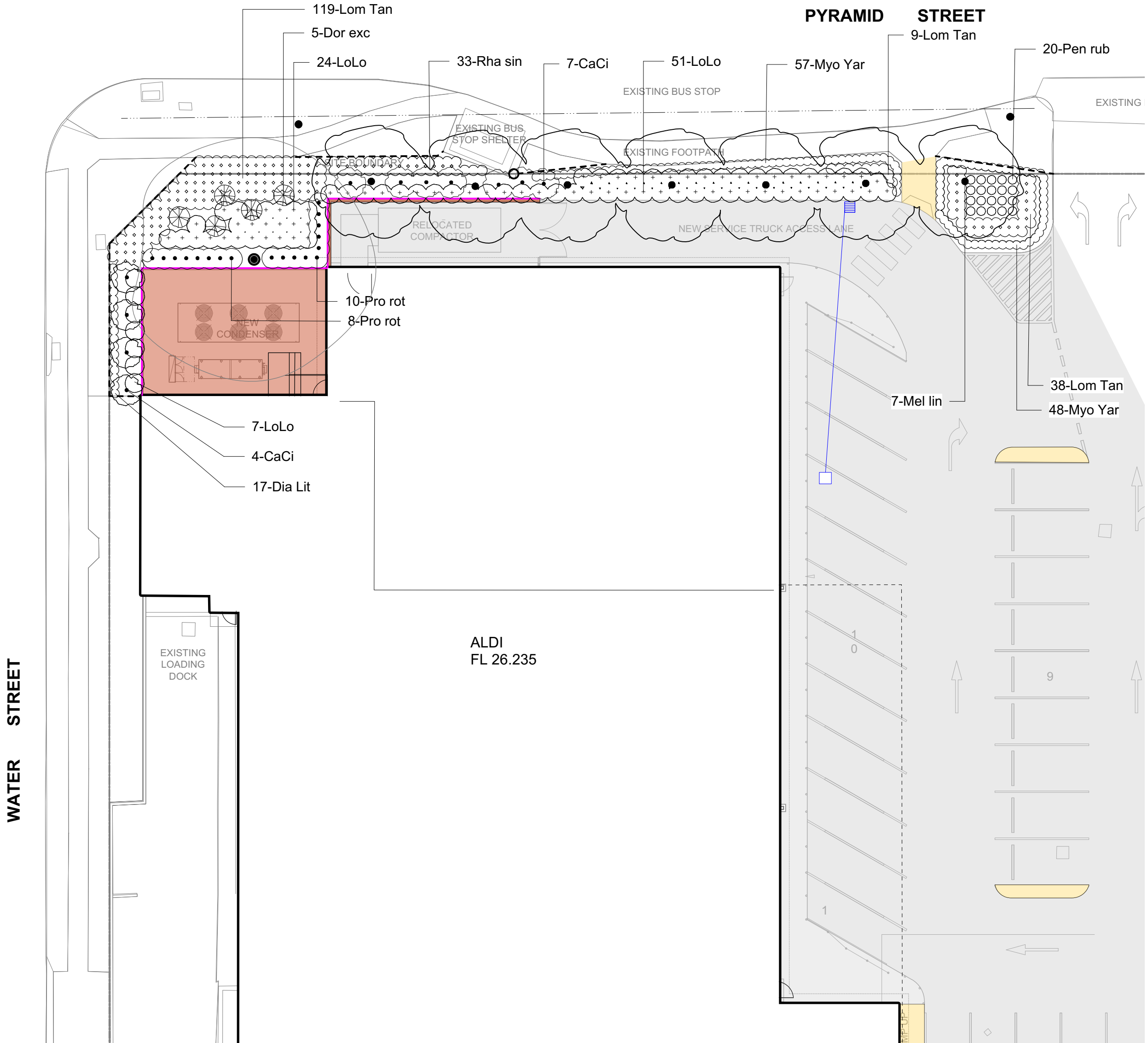
Rubbish: Remove any rubbish that may occur during the maintenance period on a weekly basis.

Weed eradication: Regularly remove weeds by hand from all landscaped areas. Where necessary, use environmentally acceptable methods, such as a non-residual spray.

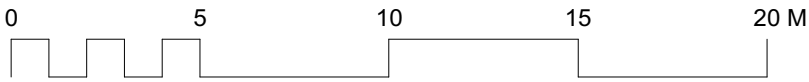
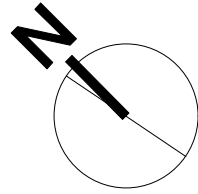
Watering: Water sufficiently to maintain continuous vigorous growth throughout the establishment period.

Soil Subsidence: Make good any erosion or soil subsidence that may occur. Ensure grass and mulched surfaces finish flush with adjacent paved surfaces.

MAINTENANCE PERIOD: 12 months from date of Practical Completion.



Landscape Planting Plan



ISSUE
A 18June 2020 Client review
B 2 July 2020 For DA

GROUPN
Architecture,
Interior,
Landscape.
L6/111-117 Devonshire Street
Sunny Hills NSW 2010
T +61 2 93963546

Lindy Lean
LANDSCAPE ARCHITECT
AAILA Registered Landscape Architect #0423
HLS Pty Ltd PO Box 313 Ashfield NSW
phone 02 9797 9366

Lennox Village Shopping complex - Aldi Expansion

Pyramid Street Emu Plains
Client: Challenger Investment Partners

Landscape Planting Plan

L 03

1:200 @A1

2 July 2020

status: for DA

ISSUE: B