

LEGEND

- STREET TREE/TREE
- SCULPTURE. REFER FJLA DRAWINGS FOR FURTHER DETAILS
- ASSET PROTECTION ZONE (APZ)
- PROPOSED PLANTING: (REFER BOTANICA DWGS L509 & L510 FOR DETAILS)
 - SCREEN PLANTING
 - RIPARIAN PLANTING - SWALE
 - EXISTING EPHEMERAL MARSH WETLAND
 - PROPOSED EPHEMERAL MARSH
 - SCREEN PLANTING. REFER BOTANICA DWG No L503
 - PLANTING BETWEEN TIERED RETAINING WALLS (REFER L506)
- EEC REGENERATION AREAS:
 - CUMBERLAND PLAIN WOODLAND FOREST
 - RIVER FLAT EUCALYPT FOREST ON COASTAL FLOODPLAINS
 - CUMBERLAND PLAIN WOODLAND (NO MID-STORY VEGETATION)
- REVEGETATION AREAS:
 - RIVER FLAT EUCALYPT FULL REVEGETATION
 - CUMBERLAND PLAIN WOODLAND FULL REVEGETATION

NOTE: REFER TRAVERS 'FLORA & FAUNA SURVEY REPORT AND RESULTS' FOR DETAILS ON ALL REVEGETATION AND REGENERATION WORKS ON SITE

Issue:	Rev:	Description:	Date:
DA		FOR APPROVAL	10.12.19

Project title:
NEPEAN MEMORIAL PARK

Drawing title:
SITE PLAN

Principal consultant:
Florence Jaquet
 Landscape architect

Client:
NARELLE SONTNER BOTANICA
 LANDSCAPE AND HORTICULTURAL SPECIALISTS

Job no: 170925

Drawn by: EH

Checked by: NS

Scale: 1:1000 @ A1

CAD file name:

Plot date:

Drw no:
L501

Sheet no:
1/8

MASTER PLANTING SCHEDULE

Key Botanical Name	Common Name	Mat Ht	Pot Size
AC* <i>Angophora costata</i>	Smooth-Barked Apple	25m	75 litre
ACS <i>Acmena smithii</i>	Lily Pilly	12m	75 litre
AF* <i>Angophora floribunda</i>	Rough-Barked Apple	25m	75 litre
AS* <i>Angophora subvelutina</i>	Broad-Leaved Apple	12-20m	75 litre
AT <i>Allocasuarina torulosa</i>	Forest Oak	12-20m	75 litre
AS <i>Angophora subvelutina</i>	Broad-Leaved Apple	25m	75 litre
CN <i>Casuarina cunninghamiana</i>	River Sheoak	20m	75 litre
CSG <i>Casuarina glauca</i>	Swampy Oak	20m	75 litre
CG <i>Corymbia gumifera</i>	Red Bloodwood	15m	75 litre
CM* <i>Corymbia maculata</i>	Spotted Gum	15-22m	75 litre
EA* <i>Eucalyptus globulodes</i>	White Stringbark	20m	75 litre
EE* <i>Eucalyptus sphaeroides</i>	Thin-Leaved Stringbark	25m	75 litre
EQ* <i>Eucalyptus fibrosa</i>	Red Ironbark	30m	75 litre
EP* <i>Eucalyptus punctata</i>	Grey Gum	25-30m	75 litre
EM* <i>Eucalyptus moluccana</i>	Grey Box	20-25m	75 litre
ES <i>Eucalyptus sideroxylon</i>	Mugga Ironbark	25m	75 litre
ESA <i>Eucalyptus saligna</i>	Sydney Blue Gum	20-30m	75 litre
ESB <i>Eucalyptus sideroxylon</i>	Forest Red Gum	25m	75 litre
FR <i>Fraxinus raxworthyi</i>	Cleared Ash	12m	75 litre
GB <i>Gingko biloba</i>	Maidenhair Tree	10m	75 litre
JM <i>Jacaranda mimosifolia</i>	Jacaranda	12m	75 litre
PC <i>Pyrus calleryana 'Aristocrat'</i>	Aristocrat Chanticleer	12m	75 litre
SG* <i>Syzygium glomerata</i>	Turpentine	15-20m	75 litre
TL <i>Trochodendron laurina</i>	Water Gum	15m	75 litre
UGL <i>Ulmus glabra 'Lutescens'</i>	Golden Wych Elm	10m	75 litre
UPT <i>Ulmus parviflora 'Toot'</i>	Chinese Elm	10m	75 litre

Small Trees and Large Shrubs

Key Botanical Name	Common Name	Mat Ht	Pot Size
AD* <i>Angophora bakeri</i>	Narrow-Leaved Apple	15m	75 litre
ADG <i>Acacia cognata</i>	Sower Wattle	5m	25 litre
AD* <i>Acacia decurrens</i>	Black Wattle	10-15m	75 litre
AI* <i>Acacia implexa</i>	Hickory Wattle	4-10m	45 litre
AFB <i>Acacia floribunda</i>	Sockie Wattle	5m	25 litre
AFB <i>Acacia floribunda</i>	Sally Wattle	4-6m	25 litre
AP <i>Acacia paramattensis</i>	Sydney Green Wattle	8m	45 litre
ASM <i>Acmena smithii 'Minor'</i>	Minor Lily Pilly	5m	25 litre
ASS <i>Acmena smithii 'Sublime'</i>	Sublime Lily Pilly	3-5m	25 litre
BM <i>Banksia myrtilloides</i>	Grey Myrtle	3-4m	25 litre
BE <i>Banksia ericoides</i>	Heath Banksia	2-5m	25 litre
BS <i>Banksia serrata</i>	Old Man Banksia	4-8m	45 litre
BSP <i>Banksia spinulosa</i>	Hairy Banksia	2m	25 litre
BUS* <i>Bursaria spinosa</i>	Blackthorn	2-3m	25 litre
CC <i>Callistemon citrinus</i>	Crimson Bottlebrush	2-3m	25 litre
CDR <i>Callistemon Dawson River Weeper</i>	Dawson River Callistemon	5-6m	25 litre
CDR <i>Callistemon Dawson River Weeper</i>	Dawson River Callistemon	5-6m	25 litre
CM <i>Callistemon subulatus</i>	Woolly Bottlebrush	3-4m	25 litre
DM* <i>Dodonaea viscosa</i>	Hop Bush	2m	25 litre
CS <i>Callistemon salignus</i>	Willow Bottlebrush	3-4m	25 litre
DI* <i>Dioscorea sp.</i>	Diogenes	2m	25 litre
ER <i>Elaeagnus reticulata</i>	Blueberry Ash	4-10m	45 litre
EXC* <i>Excoecaria corymbosa</i>	Cherry Ballarat	2-4m	45 litre
HK <i>Hakea neophylla</i>	Malesiala Neophylla	3m	25 litre
HSA <i>Hakea sericea</i>	Needle-Bush	3m	25 litre
HSB <i>Hakea salicifolia</i>	Willow Leaf Hakea	3m	25 litre
JAK <i>Jacquinia scoparia</i>	Dogwood	3m	25 litre
LB <i>Lagerstroemia indica 'Biloxi'</i>	Biloxi Crepe Myrtle	7m	45 litre
LIA <i>Lagerstroemia indica 'Acoma'</i>	Acoma Crepe Myrtle	3-5m	45 litre
LIN <i>Lagerstroemia indica 'Natchez'</i>	Natchez Crepe Myrtle	8m	75 litre
LIT <i>Lagerstroemia indica 'Tuscarora'</i>	Tuscarora Crepe Myrtle	5-6m	45 litre
MA <i>Melaleuca artemisia</i>	Bracot Honey Myrtle	7m	25 litre
MD <i>Melaleuca decora</i>	White Feather Honey	5-7m	25 litre
ME <i>Melaleuca linariifolia</i>	Snow in Summer	8m	45 litre
PLV <i>Persea lutea</i>	Broad-Leaf Gebeung	4m	25 litre
SAE <i>Scaevola australis 'Elite'</i>	Elite Lily Pilly	3-4m	25 litre
SR <i>Syzygium 'Resilience'</i>	Resilience Lily Pilly	5m	25 litre

Small and Medium Shrubs

Key Botanical Name	Common Name	Mat Ht	Pot Size
ASA <i>Asplenium australasicum</i>	Bird's Nest Fern	1m	5 litre
AC <i>Aspidistra elatior</i>	Cast Iron Plant	0.8m	5 litre
AE <i>Asplenium elatior</i>	Cast Iron Plant	0.7m	5 litre
BHP <i>Banksia spinulosa 'Honey Pots'</i>	Honey Pots	1m	5 litre
BVN <i>Banksia virgata 'Nana'</i>	Dwarf Banksia	1m	5 litre
CAW <i>Callistemon 'Anzac White'</i>	Anzac White	1m	5 litre
CE <i>Crocosia 'Little Dome'</i>	Little Dome	0.4m	5 litre
CM <i>Civica minima</i>	Trumpet Lily	0.5m	5 litre
CS <i>Callistemon subulatus</i>	Dwarf Bottlebrush	1-2m	5 litre
DUF <i>Daviesia ulicifolia</i>	Gorse Bitter-Pea	1m	5 litre
DS <i>Dillwynia sieberi</i>	Parrot Pea	1.5m	5 litre
DE <i>Doryanthes excelsa</i>	Gymea Lily	1-2m	5 litre
GF <i>Gardenia 'Florida'</i>	Florida Gardenia	1.5m	5 litre
GC <i>Grevillea 'Fire Cracker'</i>	Fire Cracker	1m	5 litre
GU <i>Grevillea juniperina</i>	Pinkey Spider Flower	2m	5 litre
GM <i>Grevillea mucronata</i>	Green Spider Flower	1-2m	5 litre
GO* <i>Goodenia ovata</i>	Goodenia	1.5m	5 litre
GS <i>Grevillea sericea</i>	Pink Spider Flower	1-2m	5 litre
HGN <i>Hymenoporum 'Gold Nugget'</i>	Gold Nugget Frangipani	0.7m	5 litre
IA* <i>Indigofera australis</i>	Native Indigo	1.5m	5 litre
KA <i>Kunzea ambigua</i>	Tick Bush	2-3m	25 litre
LLB <i>Leptospermum 'Lemon Lime Bitters'</i>	Lemon, Lime Bitters	0.7m	5 litre
LSS <i>Leptospermum 'Little Lemon Scents'</i>	Little Lemon Scents	1m	5 litre
LP <i>Leptospermum polygalifolium</i>	Yellow Tea Tree	2-3m	25 litre
MT <i>Melaleuca thymifolia</i>	Thyme Honey Myrtle	1m	5 litre
MTC <i>Melaleuca 'Cotton Candy'</i>	Cotton Candy Honey Myrtle	1m	5 litre
MTW <i>Melaleuca 'White Lace'</i>	White Lace Honey Myrtle	1m	5 litre
MO <i>Melaleuca thymifolia</i>	Small-Leaved Daisy Bush	1m	5 litre
OD <i>Ozothamnus diosmifolium</i>	Sago Flower	2m	5 litre
PF <i>Philotheca 'Flower Girl'</i>	Wax Flower	1.5m	5 litre
PL <i>Personna linearis</i>	Narrow-Leaf Gebeung	2-3m	25 litre
PM <i>Pinnaea infolia</i>	Slender Rice Flower	0.4m	5 litre
PV <i>Phytolacca villosa</i>	Wildcress	0.5-2m	5 litre
ST <i>Syzygium 'Tiny Tree'</i>	Tiny Tree	0.7m	5 litre
WF <i>Westringia fruticosa</i>	Coastal Rosemary	1.5m	5 litre
XE <i>Xanthorrhoea australis</i>	Austral Grass Tree	1-2m	25 litre
YF <i>Yucca filamentosa</i>	Adam's Needle	1-2m	5 litre

Key Botanical Name **Common Name** **Mat Ht** **Pot Size**

Grasses

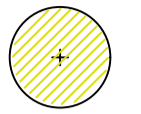
ACP <i>Austrostrophia caespitosa</i>	Common Wallaby Grass	0.4m	150mm
AR* <i>Arctostylis ramosa</i>	Three-Awn Speargrass	0.5m	150mm
CS* <i>Cenchrus ciliaris</i>	Tall Sedge	1m	150mm
CO* <i>Cyperus gracilis</i>	Slender Flat Sedge	1.2m	150mm
CT* <i>Chloris strobilata</i>	Windmill Grass	0.5m	150mm
DC <i>Dianella caerulea</i>	Blue Flax Lily	0.5m	150mm
DL* <i>Dianella longifolia</i>	Smooth Flax Lily	0.8m	150mm
DI <i>Dietes iridoides</i>	African Iris	0.8m	150mm
DRY* <i>Dianella revoluta</i>	Parrot Lily	0.6m	150mm
DTB <i>Dianella tasmanica 'Blaze'</i>	Blaze Lily	0.5m	150mm
EC* <i>Echinochloa caespitosa</i>	Tufted Hedgehog Grass	0.6m	150mm
EM <i>Eriochloa marginata</i>	Bordered Panic	0.3m	150mm
FN <i>Ficinia nodosa</i>	Knobby Club Rush	1m	150mm
GSP <i>Gahnia spp.</i>	Rough Saw-sedge	1m	150mm
JU* <i>Juncus setosus</i>	Common Rush	1m	150mm
LGW <i>Lomandra 'Great White'</i>	Great White Mat-Rush	0.5m	150mm
LAM <i>Liriope 'Amethyst'</i>	Amethyst Liriope	0.4m	150mm
LIB <i>Liriope 'Isabella'</i>	Isabella Liriope	0.4m	150mm
LLF* <i>Lomandra filiformis</i>	Wattle Mat-Rush	0.4m	150mm
LL <i>Lomandra longifolia</i>	Sunny-headed Mat-Rush	1m	150mm
LM* <i>Lomandra multiflora</i>	Many Flowered Mat-Rush	0.7m	150mm
LLT <i>Lomandra 'Tanika'</i>	Tanika Mat-Rush	0.6m	150mm
MS* <i>Microstena stipitata</i>	Weeping Grass	0.4m	150mm
PK <i>Poa 'Kingsdale'</i>	Kingsdale	0.5m	150mm
POL <i>Poa labillardieri</i>	Common Tussock Grass	0.6m	150mm
SG <i>Syngonium glauca</i>	Nodding Blue Lily	1m	150mm
TA* <i>Themeda australis</i>	Kangaroo grass	1m	150mm

Groundcovers, Climbers

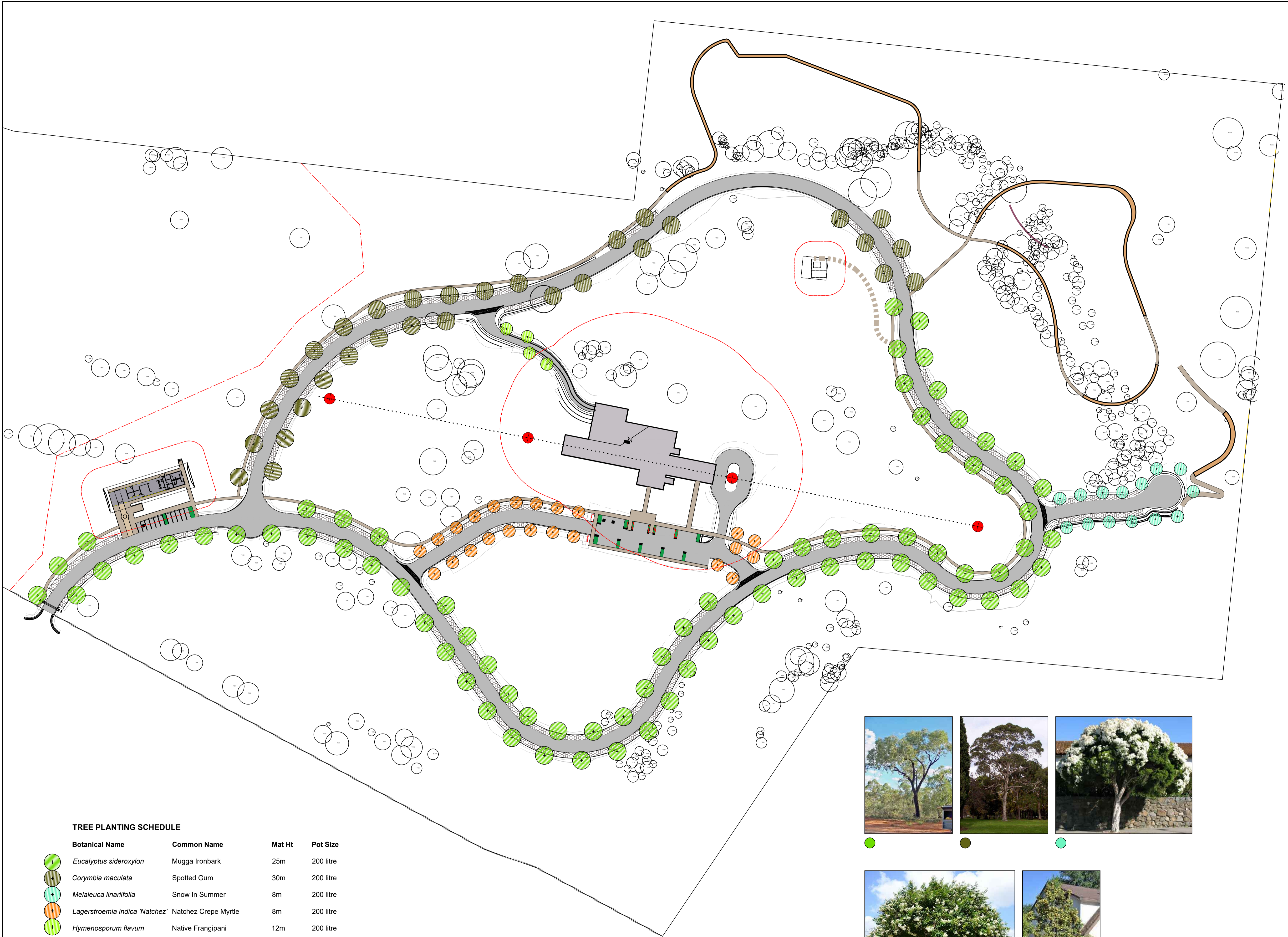
AA <i>Acinos anversii</i>	Basil Thyme	0.2m	150mm
ADA <i>Asiaticum asiaticum</i>	Common Maidenhair Fern	0.4m	150mm
AC <i>Asperula conferta</i>	Common Woodruff	1m	150mm
AH <i>Actinotus helianthi</i>	Finnel Flower	0.4m	150mm
AB* <i>Arctostylis ramosa</i>	Australian Bugle	0.2m	150mm
AM* <i>Arthropodium milleflorum</i>	Pale Vanilla Lily	0.5m	150mm
BA* <i>Brunonella australis</i>	Blue Yam	0.3m	150mm
CA <i>Clematis aristata</i>	Old Man's Beard	0.1m	150mm
CD* <i>Cheilanthes distans</i>	Bristly Cloak Fern	0.2m	150mm
CF <i>Cheilanthes sieberi</i>	Rock Fern	0.3m	150mm
DR* <i>Drosera rotundifolia</i>	Winter Weed	0.1m	150mm
ED* <i>Eremophila sieberi</i>	Winter Apple	1m	150mm
GBR <i>Gonolobus 'Straw Rambler'</i>	Honza Rambler	0.2m	150mm
GM <i>Gonolobus 'Mt Tamboritha'</i>	Mount Tamboritha	0.2m	150mm
GT* <i>Glycine tabacina</i>	Love Creeper	0.1m	150mm
GM* <i>Goodenia hirsutella</i>	Ivy Goodenia	0.2m	150mm
HA <i>Haberberia aspera</i>	Rough Guinea Flower	0.2m	150mm
HFW <i>Hardenbergia 'Frag White'</i>	Flat White Twining-Pea	0.2m	150mm
HP* <i>Hardenbergia violacea</i>	Purple Twining-Pea	0.2m	150mm
HO* <i>Hibbertia diffusa</i>	Guinea Flower	0.3m	150mm
KR <i>Kemedia rubicunda</i>	Dusky Coral Pea	0.3m	150mm
MS <i>Mentha sativoides</i>	Bush Mint	0.3m	150mm
PP <i>Pandorea pandanora</i>	Wonga-Wonga Vine	0.3m	150mm
PSF <i>Pteris aquilina</i>	Purple Pig	0.2m	150mm
TJ <i>Trachelospermum jasminoides</i>	Star Jasmine	0.2m	150mm
VH <i>Viola hederacea</i>	Native Violet	0.1m	150mm
WG <i>Wahlenbergia gracilis</i>	Australian Bluebell	0.2m	150mm

*Cumberland Plain Woodland Species

LEGEND



STREET TREE. REFER PLANT SCHEDULE FOR FURTHER DETAILS



TREE PLANTING SCHEDULE

Botanical Name	Common Name	Mat Ht	Pot Size
 <i>Eucalyptus sideroxylon</i>	Mugga Ironbark	25m	200 litre
 <i>Corymbia maculata</i>	Spotted Gum	30m	200 litre
 <i>Melaleuca linariifolia</i>	Snow In Summer	8m	200 litre
 <i>Lagerstroemia indica 'Natchez'</i>	Natchez Crepe Myrtle	8m	200 litre
 <i>Hymenosporum flavum</i>	Native Frangipani	12m	200 litre



Issue	Rev	Description	Date
DA		FOR APPROVAL	10.12.19

Project title:
NEPEAN MEMORIAL PARK

Drawing title:
STREET TREE PLAN

Principal consultant: Client:

Florence Jaquet
Landscape architect

A: 9 Royell Avenue, Camberwell 3124
E: flo@fja.com.au
M: 0419 983 641

N A R E L L E S O N T E R
BOTANICA
LANDSCAPE AND HORTICULTURAL SPECIALISTS

PO Box 911 Avonlea NSW 2107
Tel: (02) 9918 4018 Mobile: 0419 501 144

Job no: 170925

Drawn by: EH

Checked by: NS

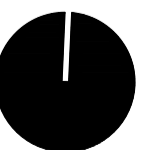
Scale: 1:1000 @ A1

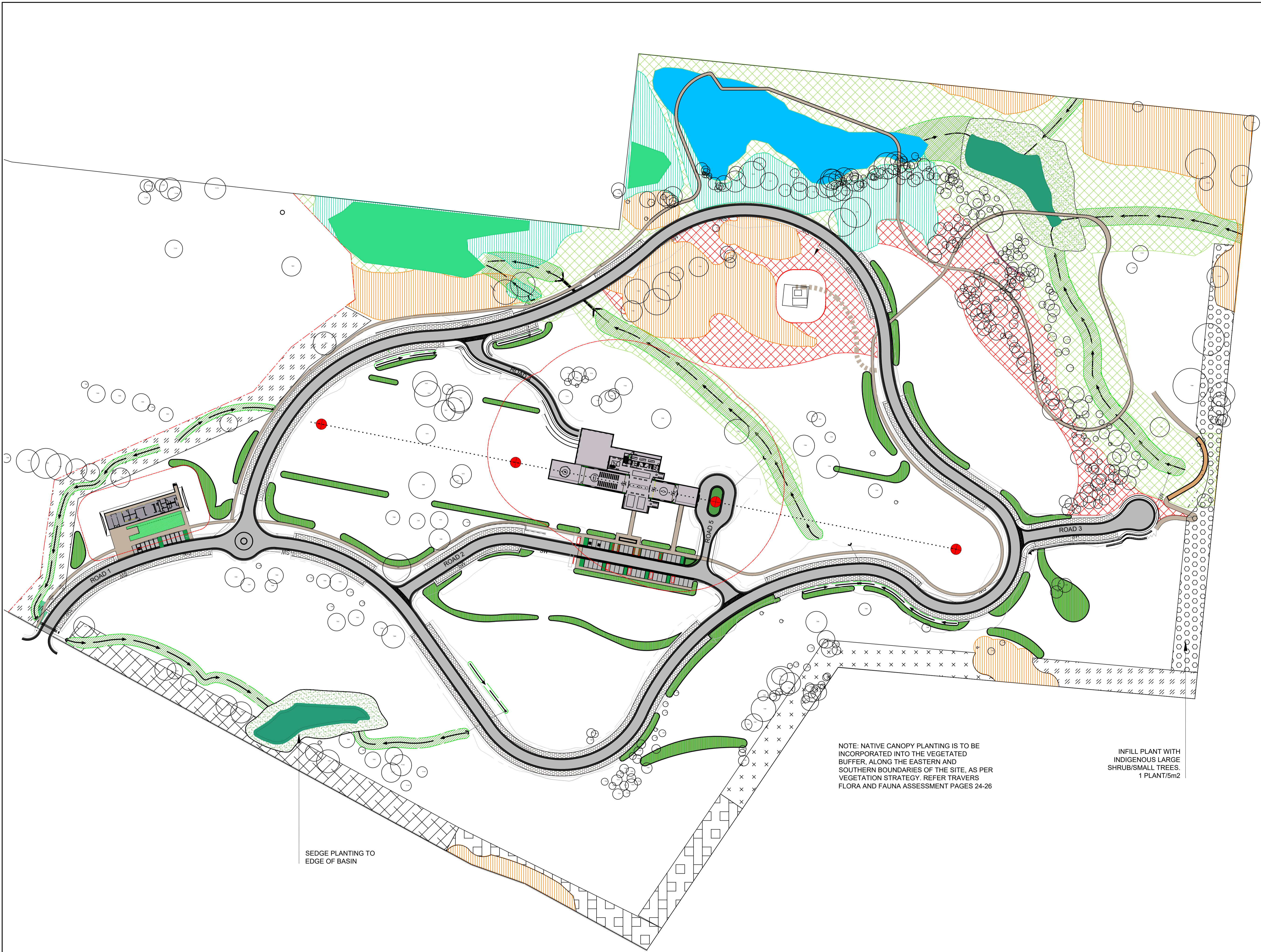
CAD file name:

Plot date:

Drw no:
L502

Sheet no:
2/8





LEGEND

EEC REGENERATION AREAS:

- CUMBERLAND PLAIN WOODLAND FOREST
- RIVER FLAT EUCALYPT FOREST ON COASTAL FLOODPLAINS
- CUMBERLAND PLAIN WOODLAND (NO MID-STORY VEGETATION)

REVEGETATION AREAS:

- RIVER FLAT EUCALYPT FULL REVEGETATION
- CUMBERLAND PLAIN WOODLAND FULL REVEGETATION

NOTE: REFER TRAVERS 'FLORA & FAUNA SURVEY REPORT AND RESULTS' FOR DETAILS ON ALL REVEGETATION AND REGENERATION WORKS ON SITE

VEGETATION BOUNDARY BUFFERS:

- PARK ROAD TYPE 1 -**
Proposed Indigenous Planting (CPW Canopy), Filtered views into site
- PARK ROAD TYPE 2 -**
Existing Trees Retained, Proposed Indigenous Infill Planting
Filtered views into site
- BOUNDARY TYPE 3 -**
Proposed Indigenous Screen Planting (CPW Canopy), to block views of headstones from Park Road and from Golf Course
- BOUNDARY TYPE 4 -**
Existing Trees Retained, Proposed Indigenous Infill Planting with Screen Species (CPW Canopy)
- BOUNDARY TYPE 5 -**
Adjacent to Residential Lots (Reduced Fuel)

Issue	Rev	Description	Date
DA		FOR APPROVAL	10.12.19

Project title:
NEPEAN MEMORIAL PARK

Drawing title:
VEGETATED BUFFER PLAN

Principal consultant:
Florence Jaquet
Landscape architect

Client:

A: 9 Royell Avenue, Camberwell 3124
E: flo@jia.com.au
M: 0419 983 641

NARELLE SONTÉ
BOTANICA
LANDSCAPE AND HORTICULTURAL SPECIALISTS

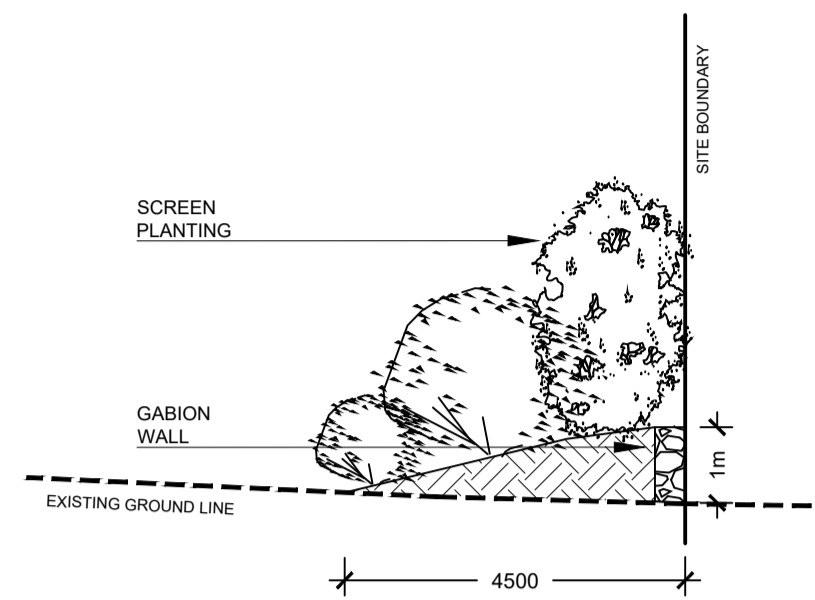
PO Box 911 Avonlea NSW 2107
Tel: (02) 9918 4018 Mobile: 0419 501 144

Job no: 170925	
Drawn by: EH	
Checked by: NS	
Scale: 1:1000	
CAD file name:	
Plot date:	Sheet no: 3/8

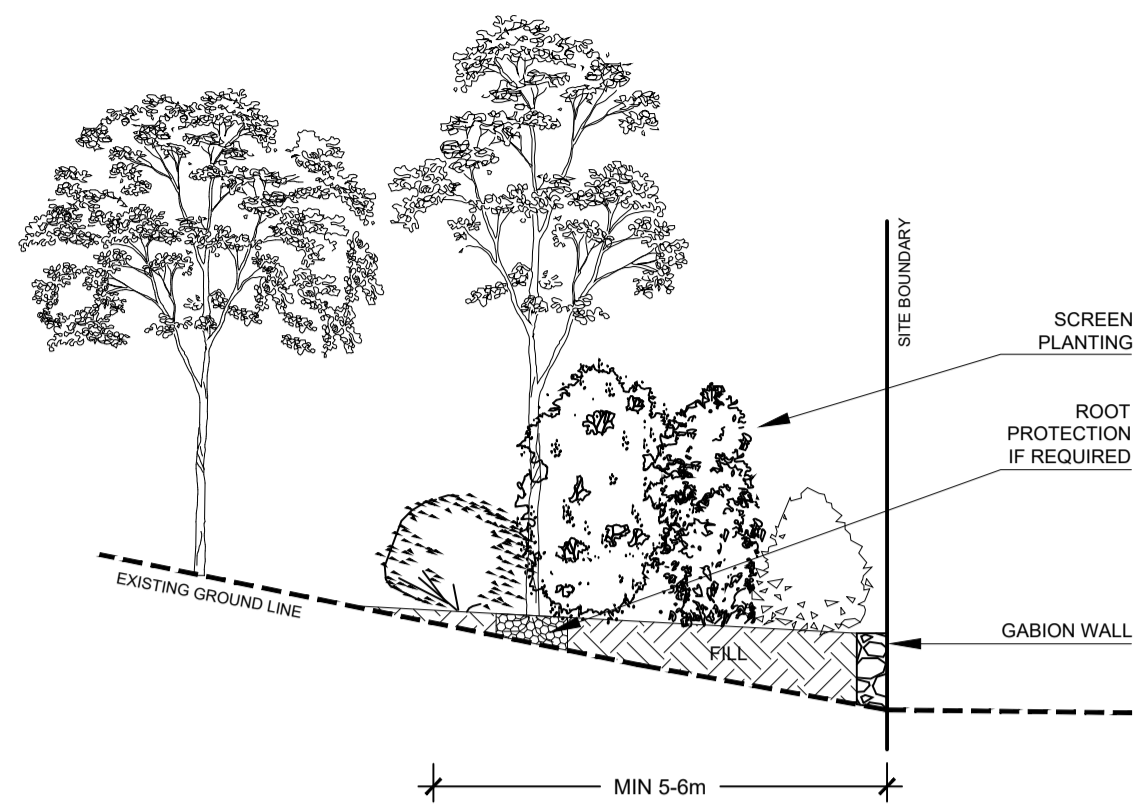
NOTE: NATIVE CANOPY PLANTING IS TO BE INCORPORATED INTO THE VEGETATED BUFFER, ALONG THE EASTERN AND SOUTHERN BOUNDARIES OF THE SITE, AS PER VEGETATION STRATEGY. REFER TRAVERS FLORA AND FAUNA ASSESSMENT PAGES 24-26

INFILL PLANT WITH INDIGENOUS LARGE SHRUB/SMALL TREES. 1 PLANT/5m2

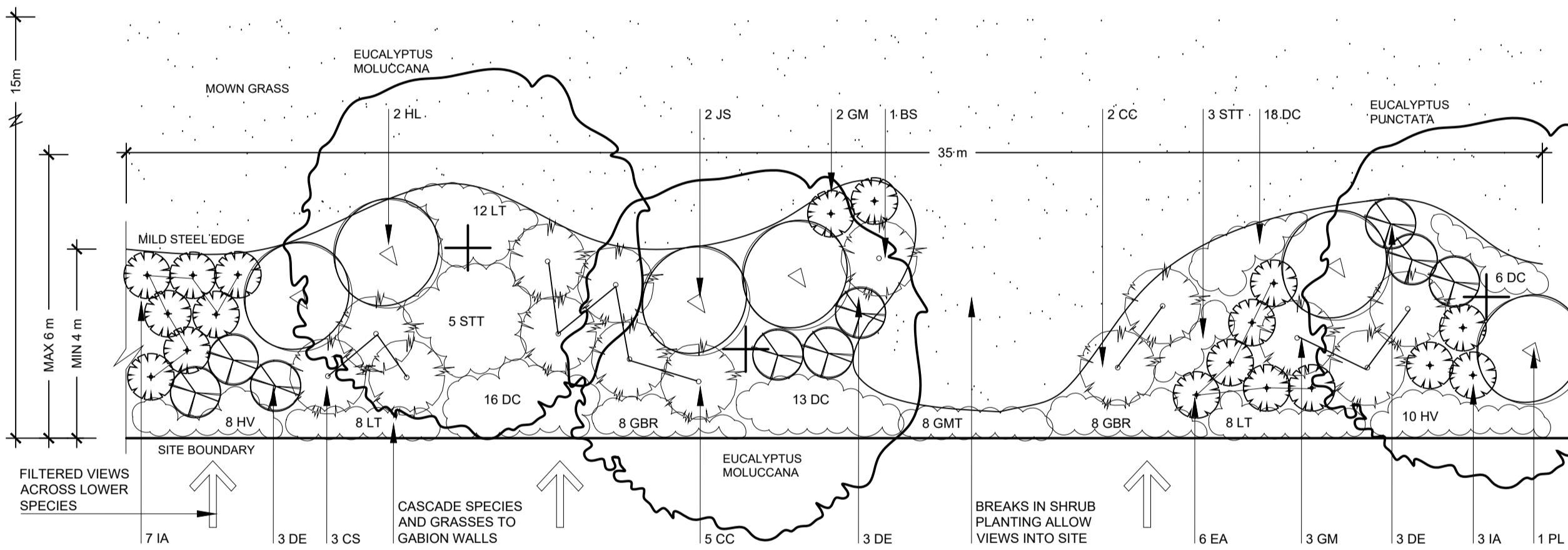
SEDGE PLANTING TO EDGE OF BASIN



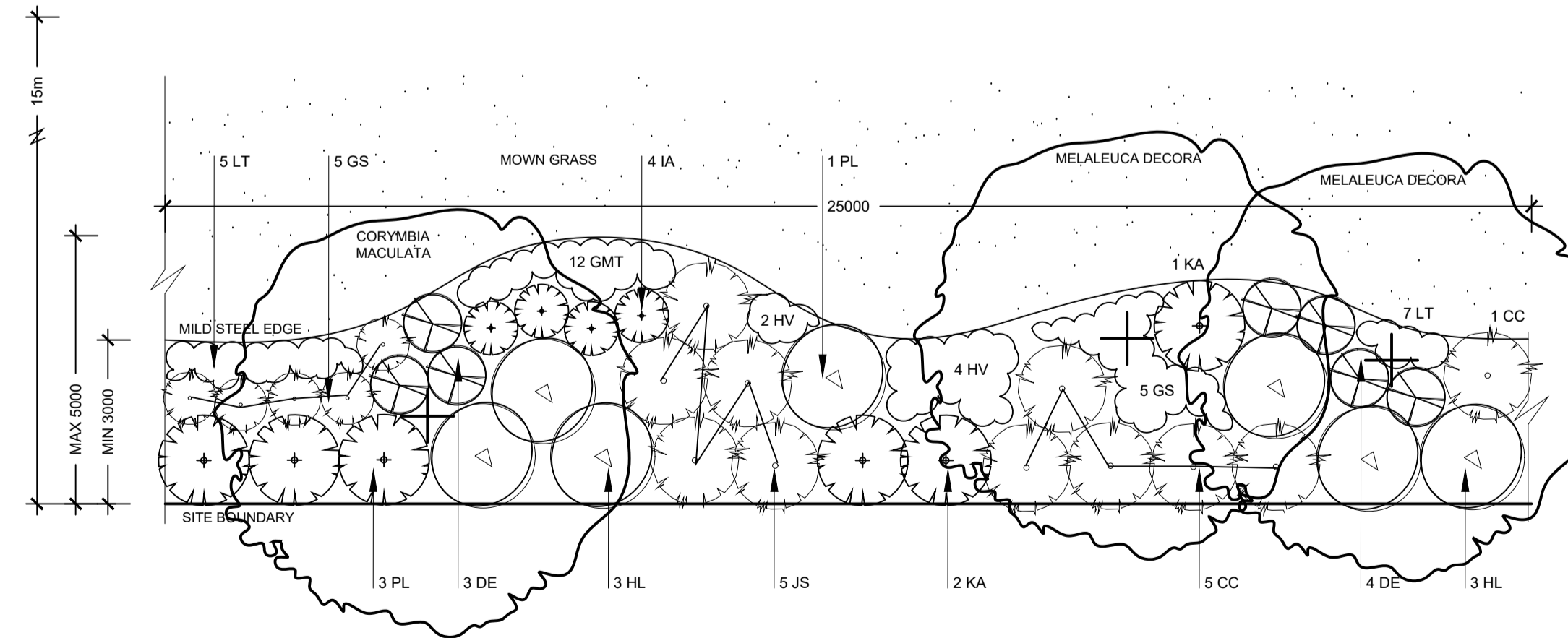
TYPE A - BOUNDARY TREATMENT
REFER FJLA PLANS
1:100



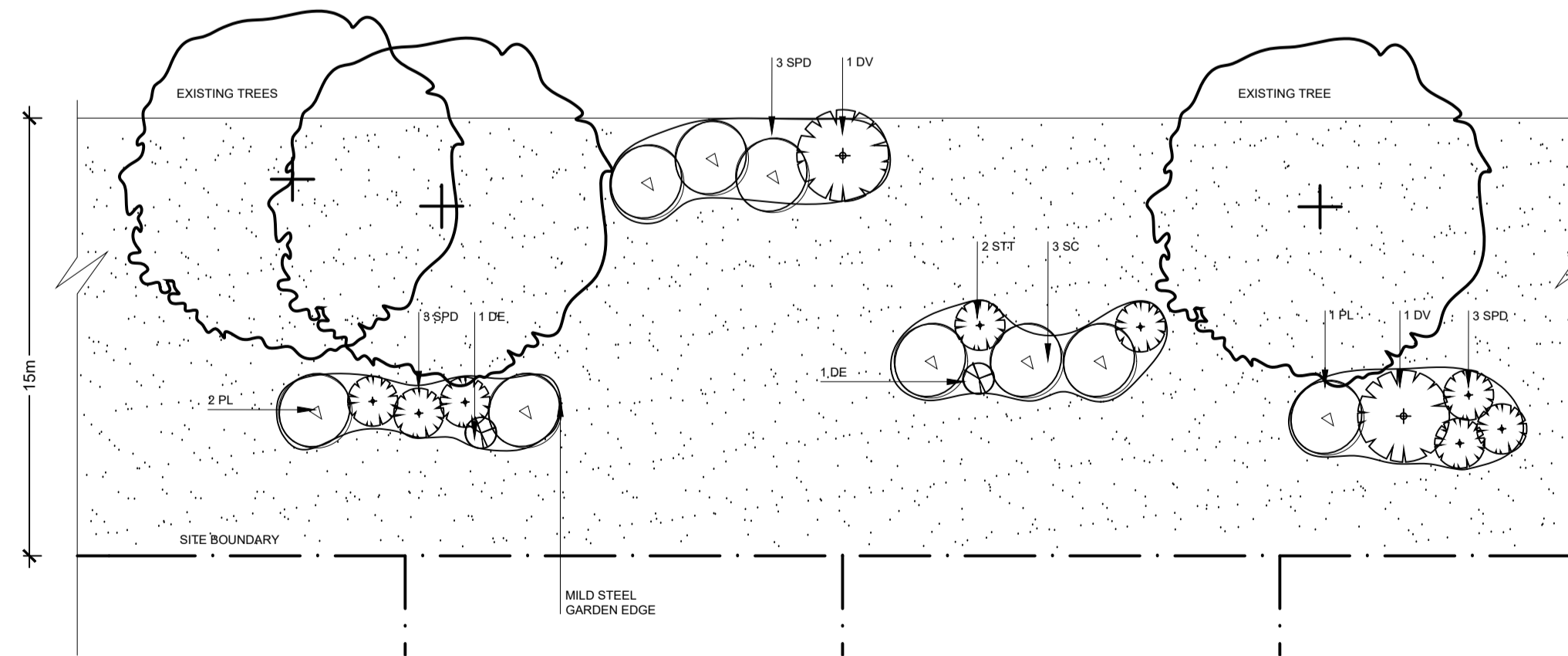
TYPE B - BOUNDARY TREATMENT
REFER FJLA PLANS
(BOUNDARY PLANTING TYPE 4)
1:100



TYPE 1 & 2 - TYPICAL BUFFER PLANTING TO PARK ROAD
(TYPE 2 IS IN AREAS OF RETAINED TREES)
1:100



TYPE 3 - TYPICAL SCREEN PLANTING
1:100



TYPE 5 - LANDSCAPED BUFFER ADJACENT TO RESIDENTIAL BOUNDARIES
(REDUCED FUEL LOAD)
1:200

INDICATIVE LANDSCAPE BUFFER PLANTING SCHEDULE

Botanical Name	Common Name	Mat Ht	Pot Size
Trees			
*Acacia decurrens	Black Wattle	15m	75 litre
*Acacia implexa	Lightwood	10-15m	75 litre
*Corymbia maculata	Spotted Gum	15-22m	75 litre
*Eucalyptus crebra	Narrow-Leaved Ironbark	25-35m	75 litre
*Eucalyptus fibrosa	Red Ironbark	25-30m	75 litre
*Eucalyptus eugenioides	Thin-Leaved Stringbark	30m	75 litre
*Eucalyptus moluccana	Grey Gum	25m	75 litre
*Eucalyptus punctata	Grey Gum	25-35m	75 litre
*Eucalyptus tereticornis	Forest Red Gum	25m	75 litre
*Exocarpos cupressiformis	Native Cherry	8-10m	75 litre
*Melaleuca decora	Paperbark	8m	75 litre
Large Shrubs			
Banksia spinulosa	Hairpin Banksia	2m	25 litre
*Bursaria spinosa	Blackthorn	2-3m	25 litre
*Dodonaea viscosa	Hop Bush	2m	25 litre
Hakea laurina	Pin Cushion Hakea	3m	25 litre
Hakea sericea	Needle-Bush	3m	25 litre
Jacksonia scoparia	Dogwood	3m	25 litre
Persea linearis	Narrow-Leaf Geebung	2-3m	25 litre
Small and Medium Shrubs			
Callistemon subulatus	Dwarf Bottlebrush	1-2m	5 litre
Eriostemon australis	Pink Wax Flower	1-2m	5 litre
Grevillea juniperina	Prickly Spider Flower	2m	5 litre
Grevillea mucronulata	Green Spider Flower	1-2m	5 litre
*Gooberna ovata	Goodenia	1.5m	5 litre
Grevillea sericea	Pink Spider Flower	1-2m	5 litre
*Indigophera australis	Native Indigo	1.5m	5 litre
Syzygium 'Tiny Trev'	Tiny Trev	1m	5 litre
Syzygium 'Cascade'	Cascade Lilly Pilly	3m	25 litre
Syzygium paniculatum 'Dwarf'	Dwarf Magenta Cherry	2-3m	25 litre
Shrubs and Accent Plants			
Callistemon citrinus	Crimson Bottlebrush	3m	25 litre
Callistemon salignus	Willow Bottlebrush	3-4m	25 litre
Doryanthes excelsa	Gymea Lily	1-2m	25 litre
Grevillea 'Moonpaw'	Moon Glow Grevillea	3m	25 litre
Kunzea ambigua	Tick Bush	3m	25 litre
Grasses			
Dianella caerulea	Blue Flax Lily	0.5m	150mm
Lomandra 'Tanika'	Tanika Mat-Rush	1m	150mm
Groundcovers, Climbers			
Grevillea 'Bronze Rambler'	Bronze Rambler Grevillea	0.2m	150mm
Grevillea 'Mt Tamboritha'	Mt Tamboritha Grevillea	0.2m	150mm
Hardenbergia violacea	Native Sansparilla	1-1.5m	150mm

*Cumberland Plain Woodland Species

LEGEND

PROPOSED TREE

PROPOSED SHRUBS & GROUNDCOVERS

Issue	Rev	Description	Date
DA		FOR APPROVAL	10.12.19

Project title:
NEPEAN MEMORIAL PARK

Drawing title:
VEGETATED BUFFER DETAILS

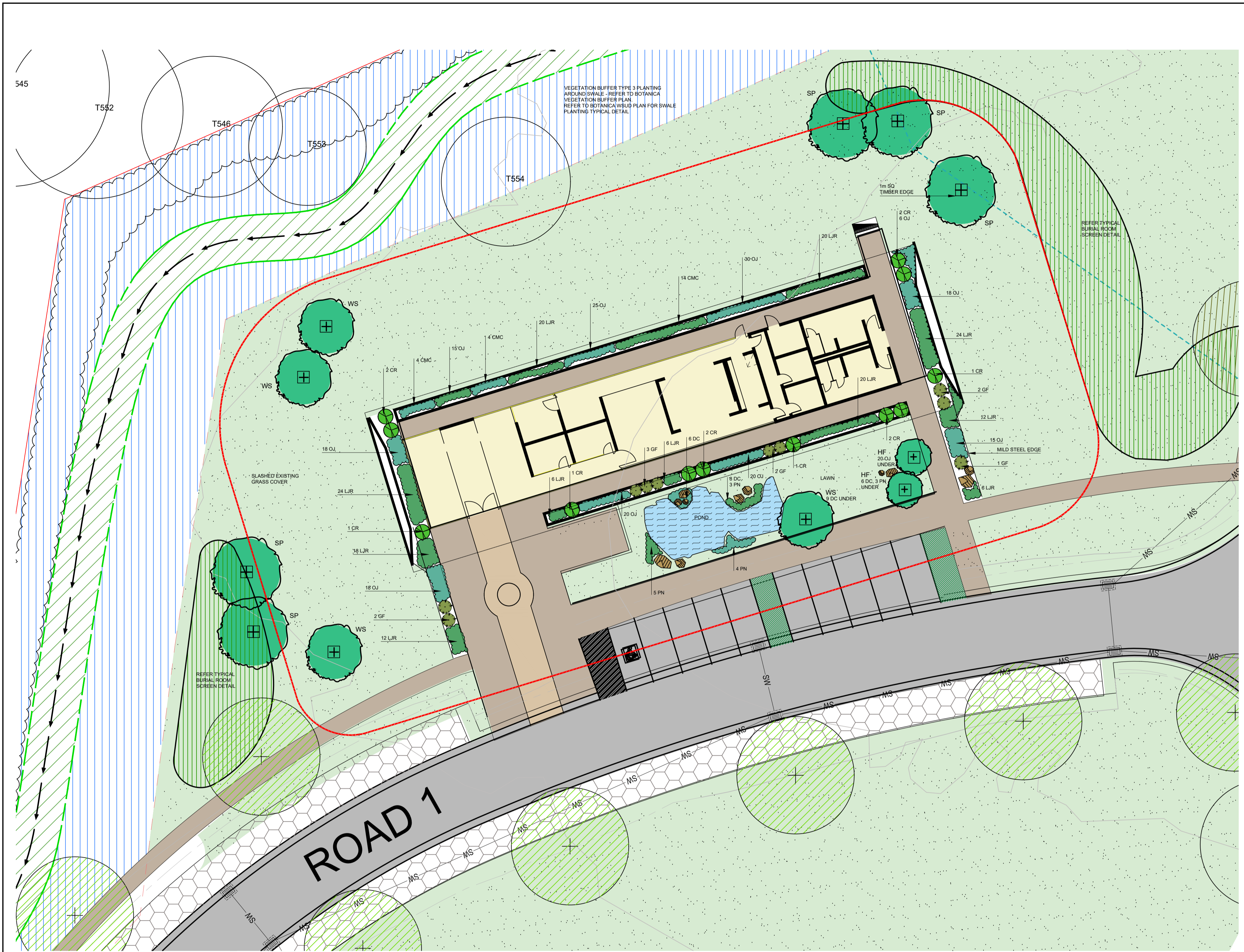
Principal consultant:
Florence Jaquet
Landscape architect

Client:

A 8 Royell Avenue, Camberwell 3124
E: flo@fjla.com.au
M: 0419 983 641

NARELLE SONTNER
BOTANICA
LANDSCAPE AND HORTICULTURAL SPECIALISTS

Job no: 170925	
Drawn by: EH	
Checked by: NS	Drw no: L504
Scale: Varies	
CAD file name:	Sheet no: 4/8
Plot date:	



LEGEND

- STREET TREE/TREE
- PROPOSED TREE
- PROPOSED SHRUBS & GROUNDCOVERS
- SCULPTURE. REFER F.J.L.A DRAWINGS FOR FURTHER DETAILS

Issue:	Rev:	Description:	Date:
DA		FOR APPROVAL	10.12.19

Project title:
NEPEAN MEMORIAL PARK

Drawing title:
ADMINISTRATION
LANDSCAPE PLAN

Principal consultant:
Florence Jaquet
Landscape architect

Client:

A 9 Royell Avenue, Camberwell 3124
E: flo@jla.com.au
M: 0419 983 641

NARELLE SONTNER
BOTANICA
LANDSCAPE AND HORTICULTURAL SPECIALISTS
PO Box 911 Avonlea NSW 2107
Tel: (02) 9918 4018 Mobile: 0419 501 144

Job no: 170925		
Drawn by: EH		
Checked by: NS		
Scale: 1:200 @ A1		Drw no: L505
CAD file name:		Sheet no: 5/8

PLANT SCHEDULE

Key	Botanical Name	Common Name	Mat Ht	Pot Size	No
Trees					
HF	<i>Hymenosporum flavum</i>	Native Frangipani	12m	75 litre	2
SP	<i>Syzygium paniculatum</i>	Magenta Cherry	5m	75 litre	5
WS	<i>Waterhousea 'Sweeper'</i>	Sweeper Waterhousea	10m	75 litre	4
Shrub and Feature Plants					
CR	<i>Cycas revoluta</i>	Cycad	1-2m	25 litre	12
GF	<i>Gardenia 'Florida'</i>	Gardenia	1.5m	5 litre	10
CMC	<i>Canna 'Margaret Cole'</i>	Dwarf Margaret Cole Canna	0.8m	5 litre	22
Groundcovers and Grasses					
DC	<i>Dianella caerulea</i>	Blue Flax Lily	0.5m	150mm	29
LJR	<i>Liriope 'Just Right'</i>	Just Right Liriope	0.4m	150mm	168
OJ	<i>Ophiopogon japonicus nana</i>	Dwarf Mondo Grass	0.1m	150mm	205
PN	<i>Pennisetum 'Nalfay'</i>	Nalfay	0.6m	150mm	15





- LEGEND**
- STREET TREE/TREE
 - PROPOSED TREE
 - PROPOSED SHRUBS & GROUNDCOVERS
 - SCULPTURE. REFER FJLA DRAWINGS FOR FURTHER DETAILS

PLANT SCHEDULE

Key	Botanical Name	Common Name	Mat Ht	Pot Size	No
Trees					
EP	<i>Eucalyptus punctata</i>	Grey Gum	25-35m	75 litre	3
ER	<i>Elaeocarpus reticulatus</i>	Blueberry Ash	10m	75 litre	10
HF	<i>Hymenoporum flavum</i>	Native Frangipani	12m	75 litre	23
PE	<i>Podocarpus elatus</i>	Plum Pine	12m	75 litre	1
SP	<i>Syzygium paniculatum</i>	Magenta Cherry	5m	75 litre	3
TL	<i>Tristanopsis luscious</i>	Luscious Water Gum	8m	75 litre	10
Shrub and Feature Plants					
GF	<i>Gardenia Florida</i>	Gardenia	1.5m	5 litre	18
MLG	<i>Magnolia Little Gem</i>	Little Gem Magnolia	5m	25 litre	8
Grasses and Groundcovers					
AW	<i>Agapanthus 'Dwarf White'</i>	Dwarf Agapanthus	0.6m	5 litre	350
DC	<i>Dianella caerulea</i>	Blue Flax Lily	0.5m	150mm	75
ED	<i>Eremophila debilis</i>	Winter Apple	1m	150mm	15
GBR	<i>Grevillea 'Bronze Rambler'</i>	Bronze Rambler	0.2m	150mm	22
GMT	<i>Grevillea 'Mt Tamboritha'</i>	Mount Tamboritha	0.2m	150mm	30
GT	<i>Glycine tabacina</i>	Love Creeper	0.1m	150mm	299
HMM	<i>Mini Meema</i>	Mini Meema	0.4m	150mm	25
LI	<i>Liriope 'Isabella'</i>	Isabella Liriope	0.5m	150mm	1524
PN	<i>Pennisetum 'Nafray'</i>	Nafray	0.6m	150mm	36
SRR	<i>Sempervivum 'Royal Ruby'</i>	Royal Ruby Succulent	0.1m	150mm	545
WM	<i>Westringia</i>	Mundi	0.3m	150mm	24

*Cumberland Plain Woodland Species



Issue:	Rev:	Description:	Date:
DA		FOR APPROVAL	10.12.19

Project title:
NEPEAN MEMORIAL PARK

Drawing title:
CHAPEL LANDSCAPE PLAN

Principal consultant:
Florence Jaquet
Landscape architect

Client:

At 8 Royell Avenue, Conberwell 3124
E: flo@fjla.com.au
M: 0419 983 641

NARELLE SONTÉ
BOTANICA
LANDSCAPE AND HORTICULTURAL SPECIALISTS
PO Box 911 Avonlea NSW 2107
Tel: (02) 9918 4019. Mobile: 0419 501 144

Job no: 170925

Drawn by: EH

Checked by: NS

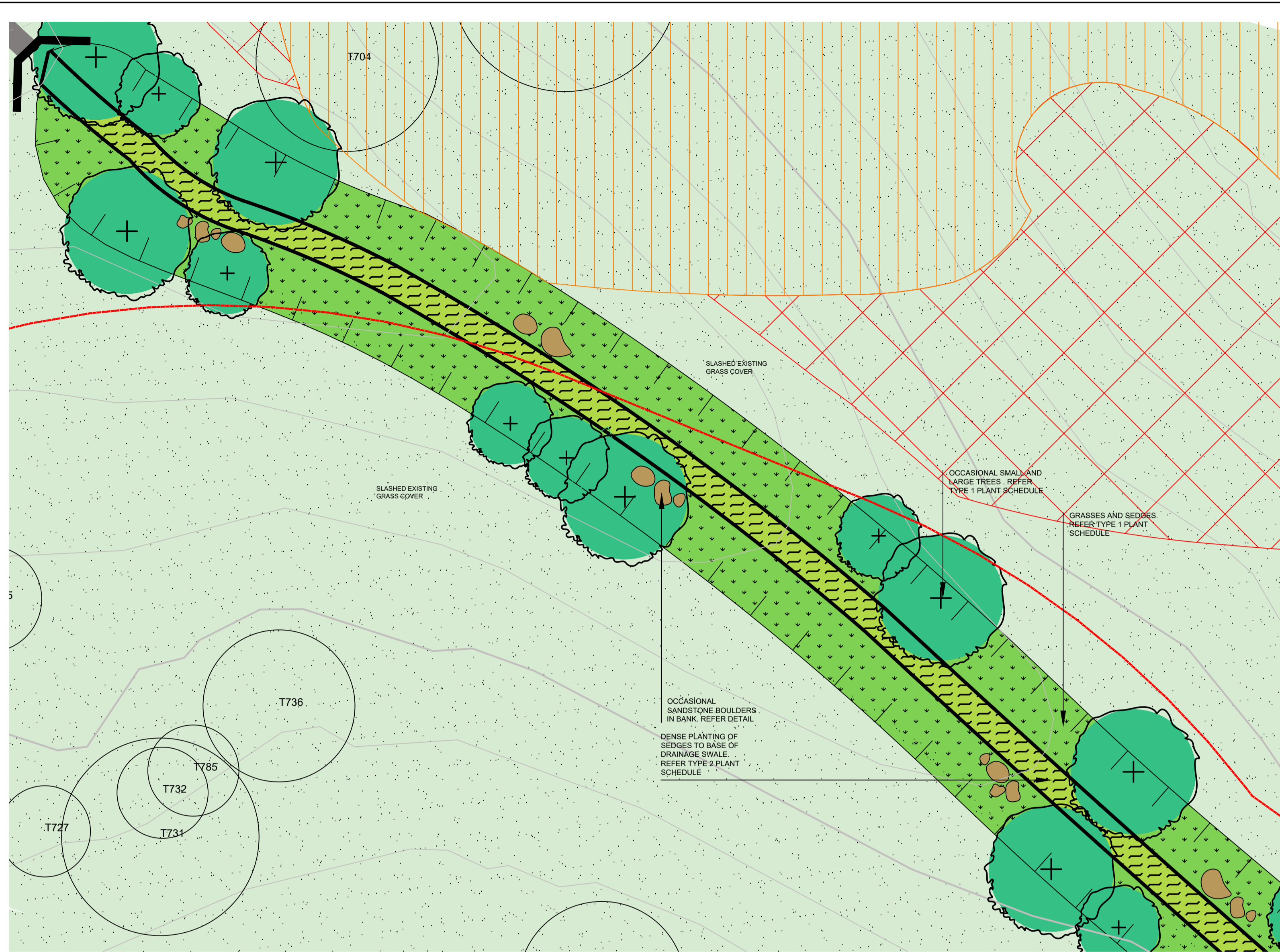
Scale: 1:200 @ A1

CAD file name:

Plot date:

Drw no:
L506

Sheet no:
6/8



NOTE:
 - DENSE PLANTING OF SEDGES OVER 2m BASE
 - TREES AND RIPARIAN PLANTING ON BATTERS (WITH OCCASIONAL SANDSTONE BOULDERS)

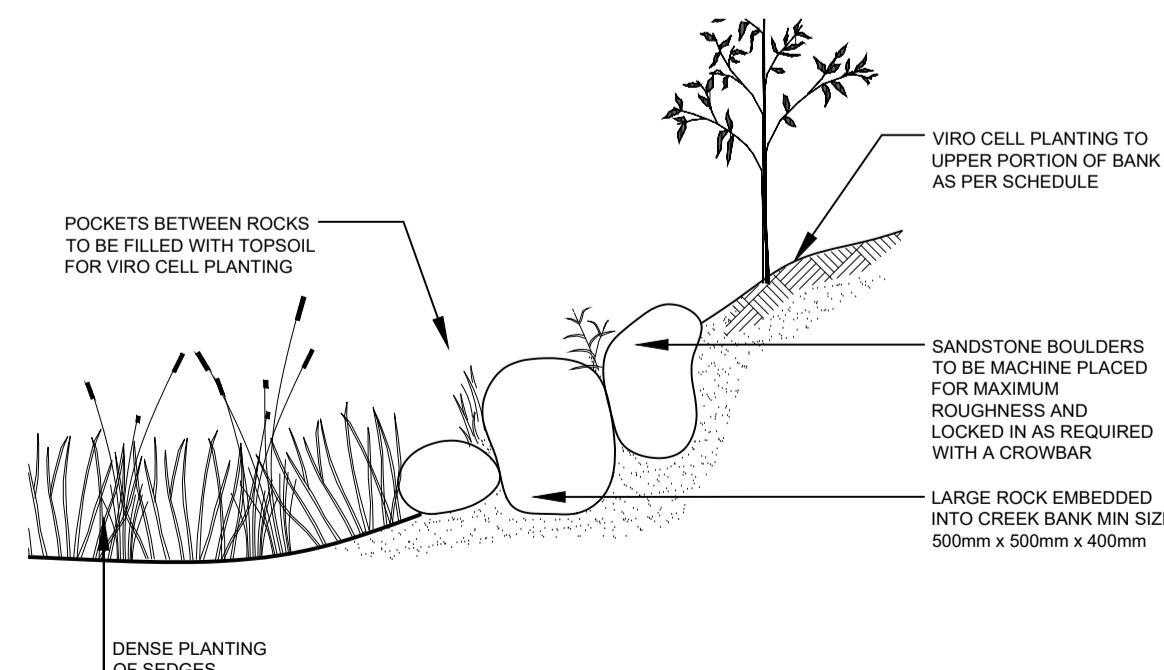
01 TYPICAL PLANTING - VEGETATED SWALE 5A
 1:200

TYPE 1 PLANT SCHEDULE
 All plants to be viro tubes

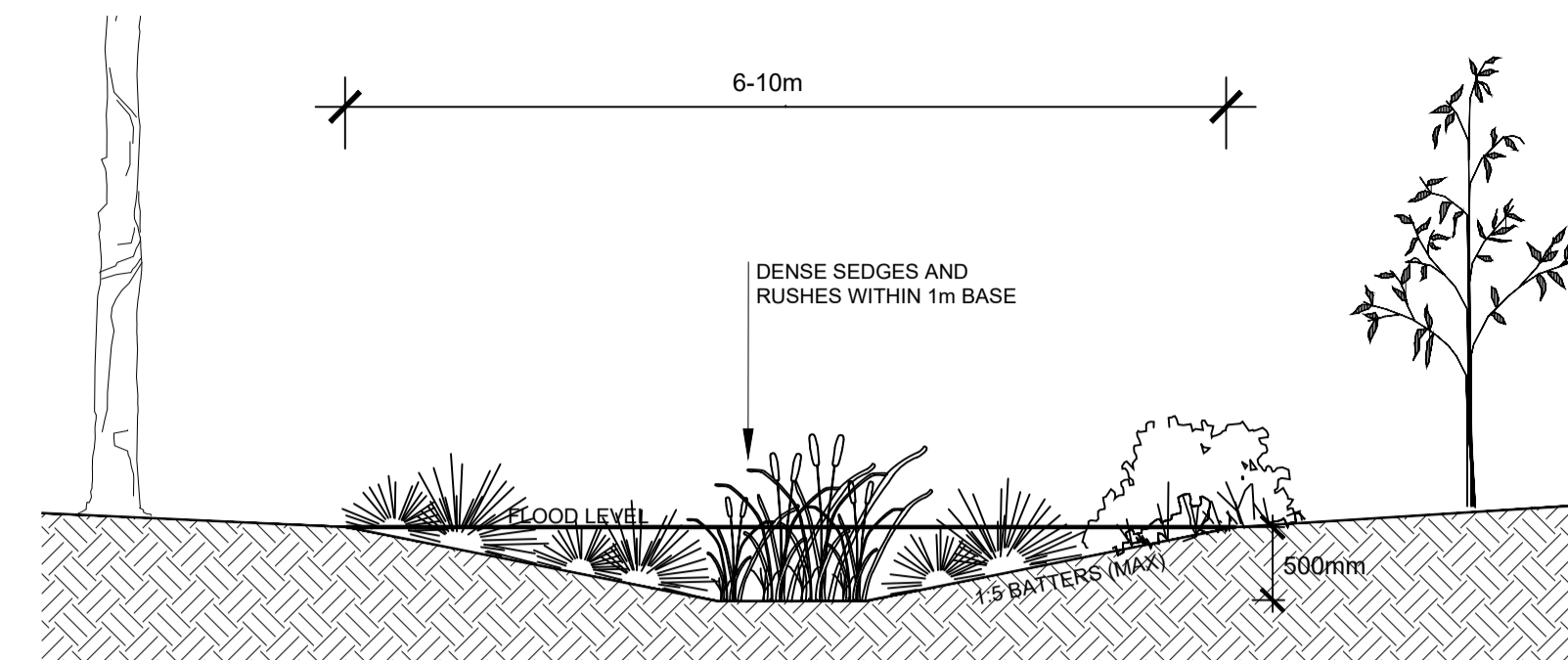
Botanical Name	Common Name	Mature Height	Density
Trees			
<i>Eucalyptus moluccana</i>	Grey Box	20m	1/p12m2
<i>Eucalyptus eugenioides</i>	Thin Leaved Stringybark	30m	"
<i>Eucalyptus crebra</i>	Narrow-leaved Ironbark	15m	"
<i>Corymbia maculata</i>	Spotted Gum	30m	"
Small Trees			
<i>Acacia decurrens</i>	Black Wattle	8m	1/p6m2
<i>Acacia implexa</i>	Hickory Wattle	10m	"
<i>Acacia parramattensis</i>	Parramatta Green Wattle	10m	"
<i>Exocarpos cupressiformis</i>	Cherry Ballarat	8m	"
Grasses and Sedges			
<i>Gahnia sieberiana</i>	Red Fruit Saw Sedge	1.5m	2/pm2
<i>Cyperus gracilis</i>	Slender Flat Sedge	0.4m	5/pm2
<i>Carex inversa</i>	Knob Sedge	0.7m	"
<i>Dianella longifolia</i>	Blue Flax Lilly	0.6m	"
<i>Lomandra filiformis</i>	Wattle Mat Rush	0.7m	"
<i>Lomandra multiflorus</i>	Many Flowered Mat Rush	0.8m	"
<i>Carex appressa</i>	Tall Sedge	0.8m	7/pm2
<i>Ficinia nodosa</i>	Knobby Club Rush	0.8m	"
<i>Juncus usitatus</i>	Common Rush	0.8m	"

TYPE 2 PLANT SCHEDULE
 All plants to be viro tubes

Botanical Name	Common Name	Mature Height	Density
Sedges			
<i>Carex appressa</i>	Tall Sedge	0.8m	7/pm2
<i>Ficinia nodosa</i>	Knobby Club Rush	0.8m	"
<i>Juncus usitatus</i>	Common Rush	0.8m	"



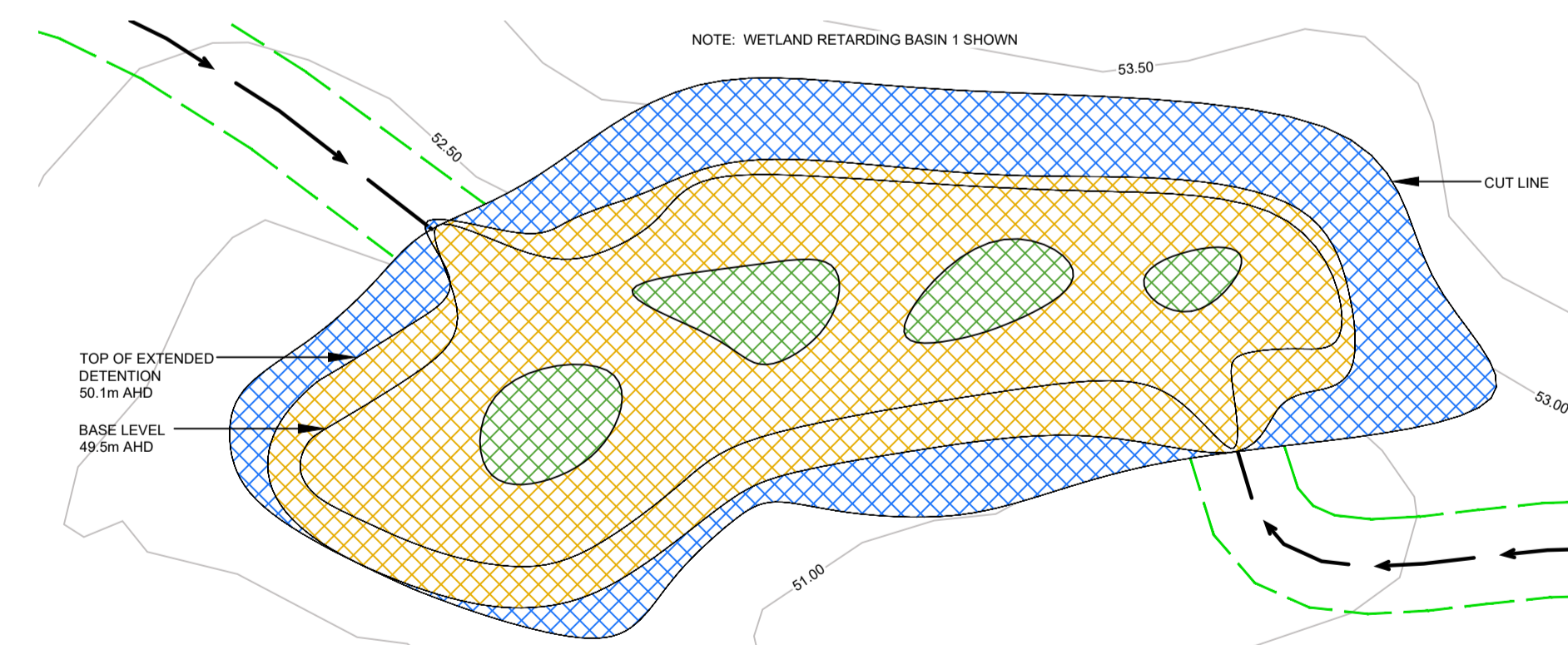
02 SECTION - BOULDER CLUSTERS TO BANK
 NTS



03 TYPICAL SWALE SECTION (CATCHMENT 3)
 NTS

CATCHMENT 3 SWALE PLANT SCHEDULE
 All plants to be viro tubes

Botanical Name	Common Name	Mature Height	Density
Shrubs			
<i>Bursaria spinosa</i>	Blackthorn	2-3m	1/p2m2
<i>Davlesia ulicifolia</i>	Corse Bitter Pea	2m	"
<i>Indigophera australis</i>	Native Indigo	1.5m	"
Grasses and Sedges			
<i>Gahnia sieberiana</i>	Red Fruit Saw Sedge	1.5m	2/pm2
<i>Cyperus gracilis</i>	Slender Flat Sedge	0.4m	5/pm2
<i>Carex inversa</i>	Knob Sedge	0.7m	"
<i>Dianella longifolia</i>	Blue Flax Lilly	0.6m	"
<i>Lomandra multiflorus</i>	Many Flowered Mat Rush	0.8m	"
<i>Carex appressa</i>	Tall Sedge	0.8m	7/pm2
<i>Ficinia nodosa</i>	Knobby Club Rush	0.8m	"
<i>Juncus usitatus</i>	Common Rush	0.8m	"



INDICATIVE EPHEMERAL MARSH PLANTING SCHEDULE

Botanical Name	Mat Ht	Pot Size	Density
Ephemeral Marsh - Species 1m Tall			
<i>Ficinia nodosa</i>	1m	Viro-Tube	5/sqm
<i>Juncus usitatus</i>	1m	Viro-Tube	5/sqm
<i>Schoenoplectus mucronatus</i>	1m	Viro-Tube	5/sqm
Ephemeral Marsh - Species >1m Tall			
<i>Baloskian pallens</i>	1.5m	Viro-Tube	5/sqm
<i>Juncus flavidus</i>	1.5m	Viro-Tube	8/10/sqm
Upper Bank Planting			
<i>Dianella caerulea 'Lucia'</i>	0.8m	Viro-Tube	5/sqm
<i>Juncus fluviatilis 'Sara'</i>	0.7m	Viro-Tube	5/sqm

04 TYPICAL PLANTING - EPHEMERAL MARSH
 1:200

LEGEND

- STREET TREE/TREE
- PROPOSED TREE

EEC REGENERATION AREAS:

- CUMBERLAND PLAIN WOODLAND FOREST

REVEGETATION AREAS:

- CUMBERLAND PLAIN WOODLAND FULL REVEGETATION

NOTE: REFER STORMY WATER SOLUTIONS WSUD STRATEGY AND STORM WATER MANAGEMENT PLAN FOR FURTHER DETAILS. REFER TRAVERS' FLORA & FAUNA SURVEY REPORT AND RESULTS' FOR DETAILS ON ALL REVEGETATION AND REGENERATION WORKS ON SITE

Issue:	Rev:	Description:	Date:
DA		FOR APPROVAL	10.12.19

Project title:
 NEPEAN MEMORIAL PARK

Drawing title:
 STORMWATER MANAGEMENT STRATEGY LANDCAPE PLAN

Principal consultant:
 Florence Jaquet
 Landscape architect

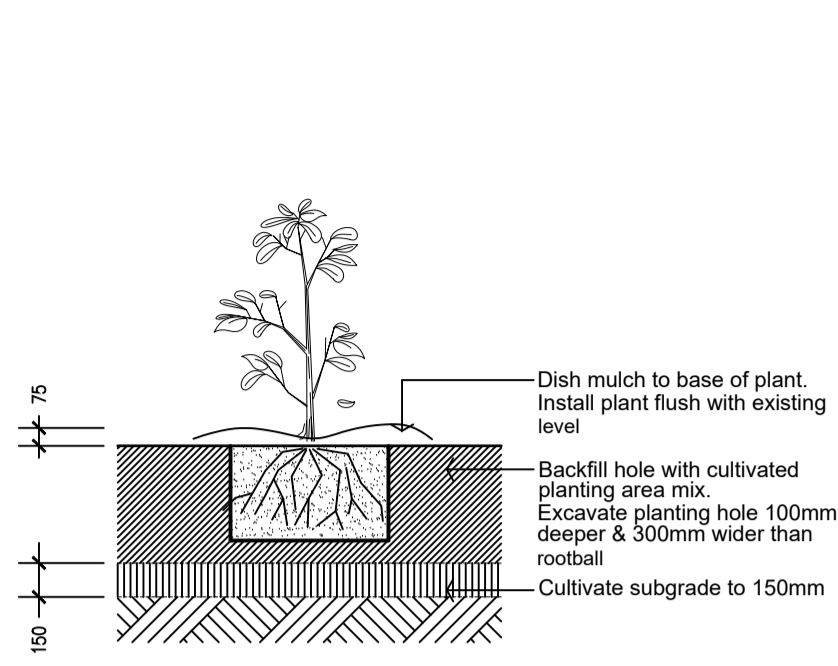
Client:

A 9 Royell Avenue, Comberwell 3124
 E: flo@jacquet.com.au
 M: 0419 983 641

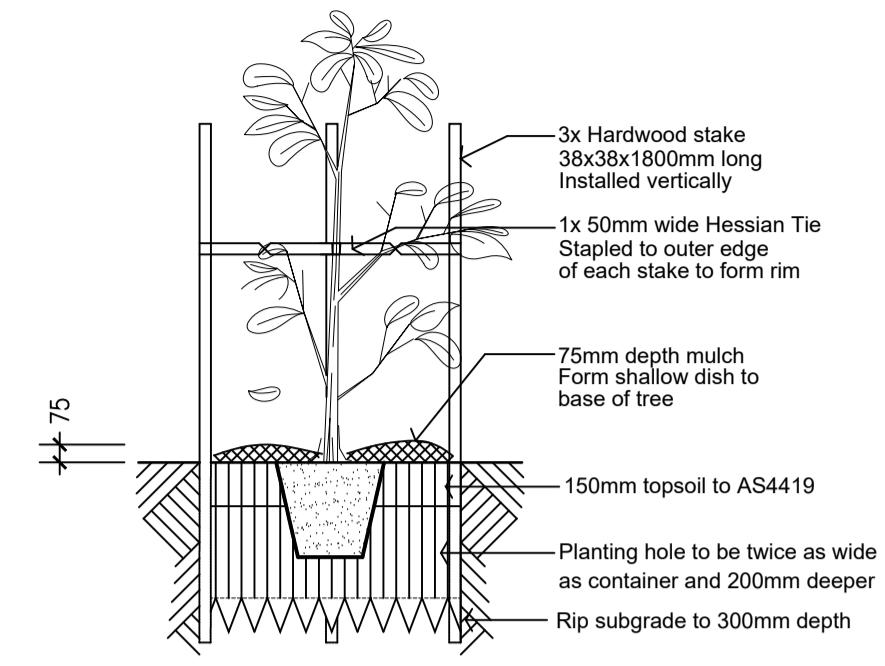
NARELLE SONTNER
BOTANICA
 LANDSCAPE AND HORTICULTURAL SPECIALISTS

PO Box 911 Avonlea NSW 2107
 Tel: (02) 9918 4019. Mobile: 0419 501 144

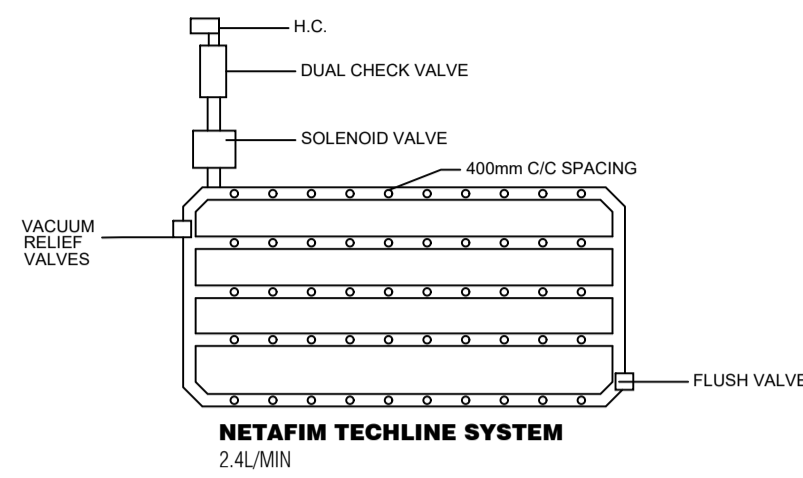
Job no: 170925	
Drawn by: EH	
Checked by: NS	
Scale: 1:200 @ A1	
CAD file name:	Drw no: L507
Plot date:	Sheet no: 7/8



SHRUB PLANTING DETAIL
NTS

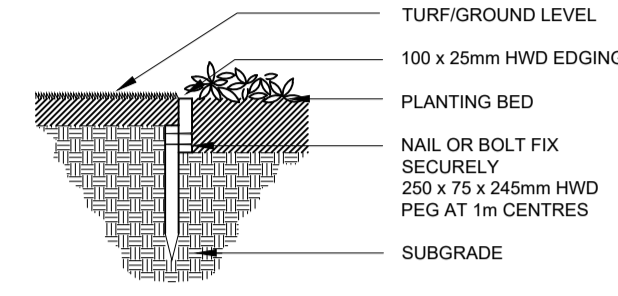


TREE PLANTING DETAIL
NTS

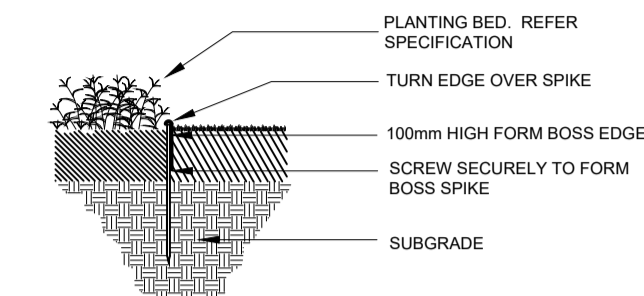


NOTE: FLOW RATE FROM WATER SOURCE ON SITE IS TO BE ADEQUATE TO ENSURE OPTIMUM PERFORMANCE FOR THE INSTALLED DRIP IRRIGATION SYSTEM ACROSS THE SITE.

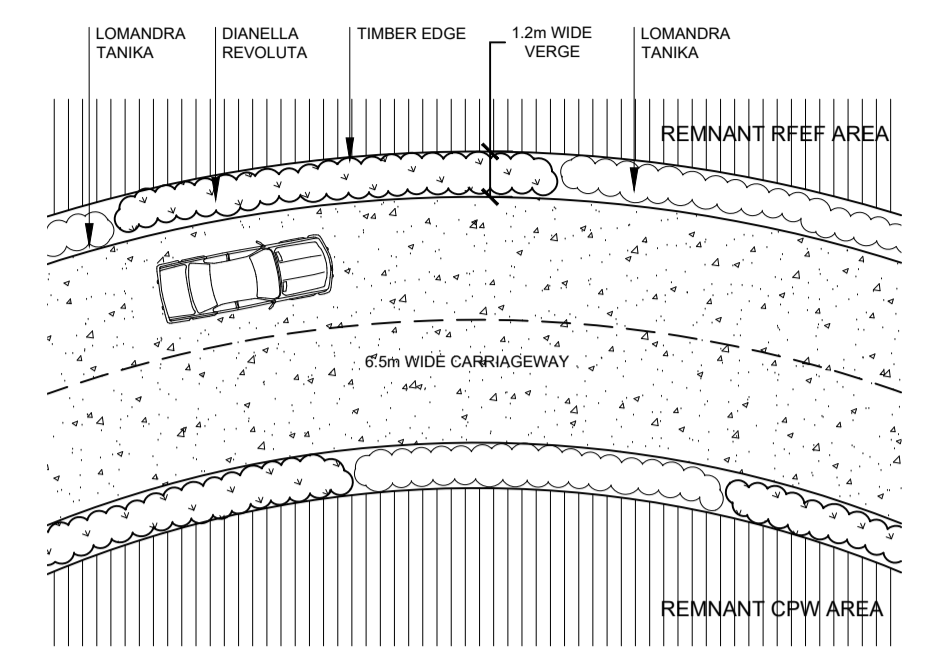
TYPICAL IRRIGATION DETAIL
NTS



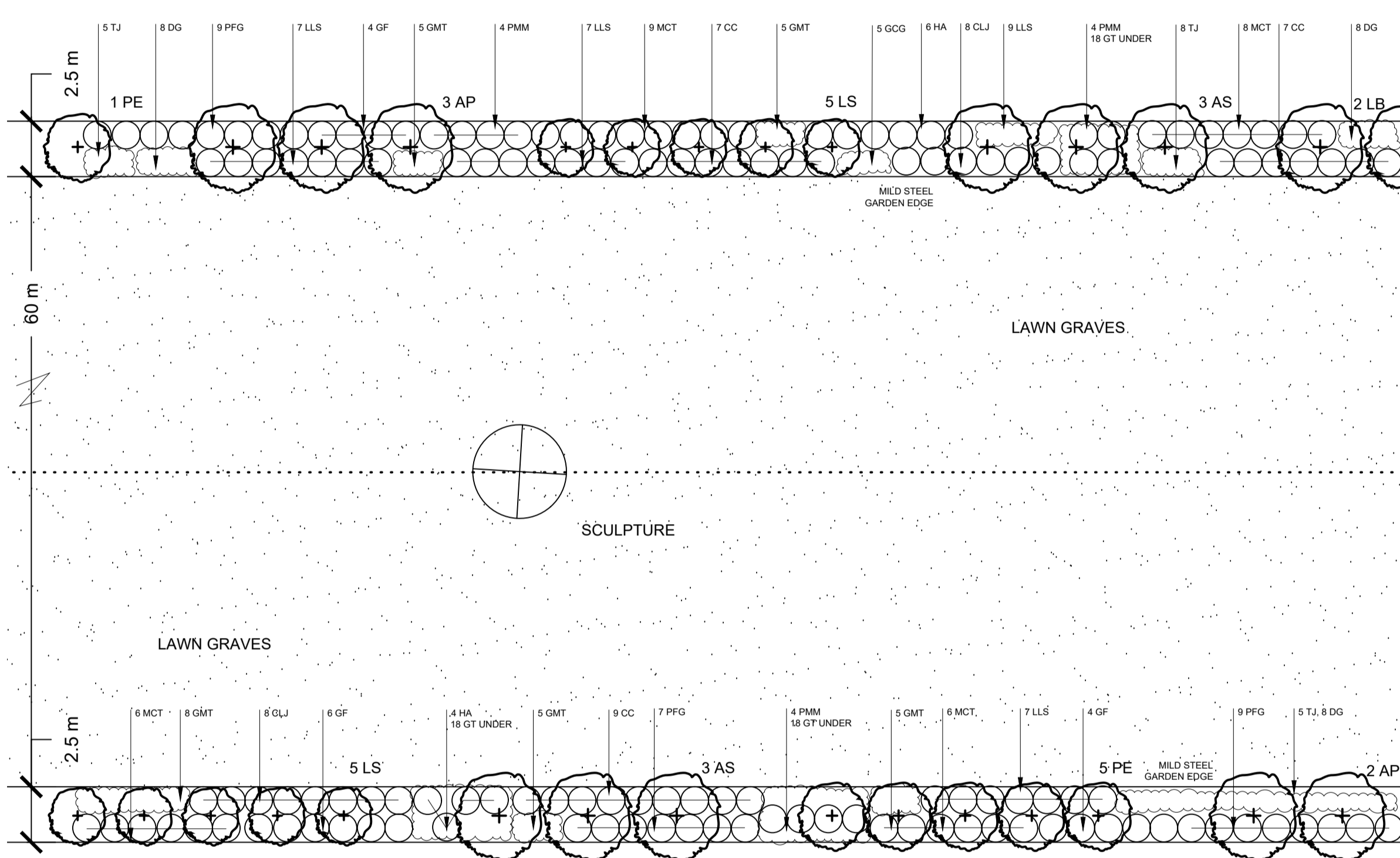
TIMBER EDGE DETAIL
NTS



'FORM BOSS' MILD STEEL EDGE DETAIL
NTS



TYPICAL ROAD VERGE IN REMNANT VEGETATION COMMUNITIES
1:200



TYPICAL CENTRAL GARDEN AVENUE DETAIL
NTS

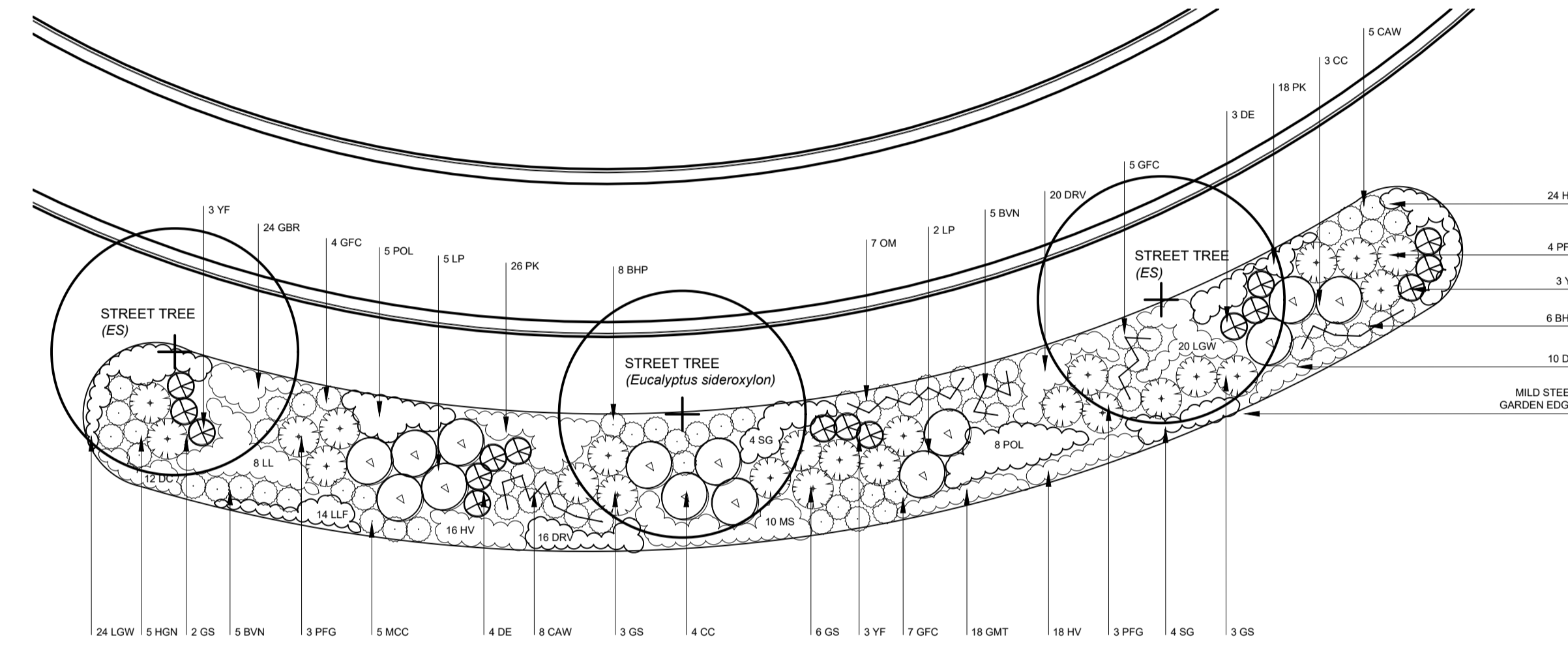
CENTRAL GARDEN AVENUE PLANTING SCHEDULE

Key Botanical Name	Common Name	Mat Ht	Pot Size
Trees			
AP <i>Acer palmatum</i>	Japanese Maple	5m	25 litre
AS <i>Acmena 'Sublime'</i>	Sublime Lilly Pilly	5m	25 litre
LB <i>Lagerstroemia 'Biloxi'</i>	Biloxi Crepe Myrtle	4m	25 litre
LS <i>Lagerstroemia 'Sioux'</i>	Sioux Crepe Myrtle	4m	25 litre
PE <i>Prunus 'Elvins'</i>	Elvins Plum	4m	25 litre
Shrub and Feature Plants			
CC <i>Coleonema pulchellum 'Compact'</i>	Compact Diosma	1m	5 litre
CLJ <i>Callistemon 'Little John'</i>	Little John	1m	5 litre
GF <i>Gardenia 'Florida'</i>	Gardenia	1m	5 litre
GCG <i>Grevillea 'Fire Cracker'</i>	Fire Cracker	1m	5 litre
HA <i>Hardenbergia alba</i>	Alba Sarsparilla	1.5m	5 litre
MCT <i>Melaleuca 'Claret Tops'</i>	Claret Tops	1.5m	5 litre
LLS <i>Leptospermum 'Little Lemon Scents'</i>	Lemon Scents	1m	5 litre
PFG <i>Philothea 'Flower Girl'</i>	Wax Flower	1.5m	5 litre
PMMP <i>Phormium 'Maori Maiden'</i>	Maori Maiden Flax	1m	5 litre
Grasses and Groundcovers			
DC <i>Dianella caerulea</i>	Blue Flax Lily	0.5m	150mm
DG <i>Dietes iridioides</i>	African Iris	0.8m	150mm
GMT <i>Grevillea 'Mt Tamboritha'</i>	Mount Tamboritha	0.2m	150mm
GT <i>Glycine tabacina</i>	Love Creeper	0.1m	150mm
TJ <i>Trachelospermum jasminoides</i>	Star Jasmine	0.3m	150mm

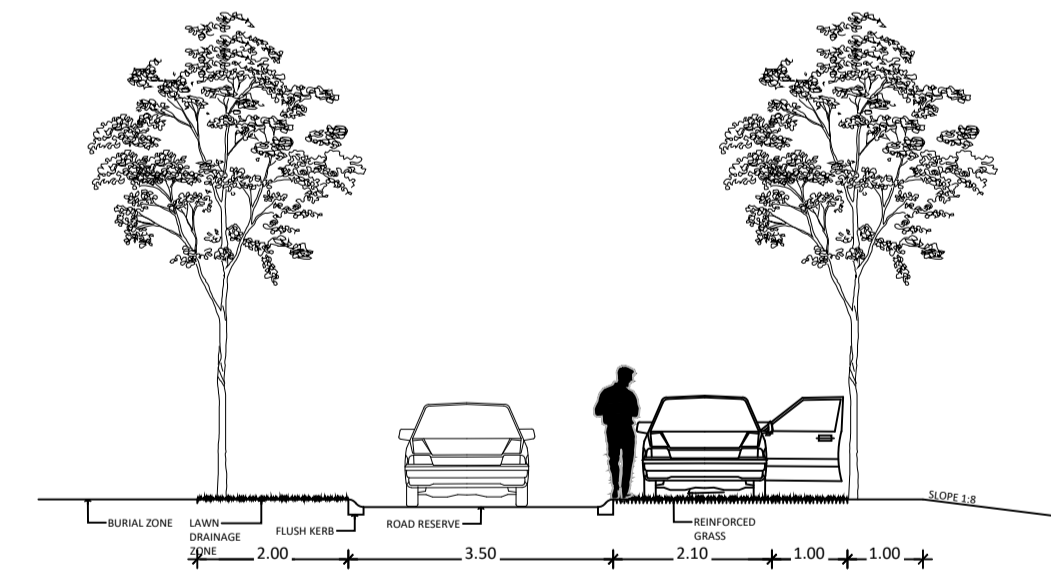
PLANTING SCHEDULE

Key Botanical Name	Common Name	Mat Ht	Pot Size	No
Small and Medium Shrubs				
BHP <i>Banksia spinulosa 'Honey Pots'</i>	Honey Pot Banksia	1m	5 litre	14
BVN <i>Baeckea virgata 'Nana'</i>	Dwarf Baeckea	1m	5 litre	10
CAW <i>Callistemon White Anzac'</i>	Anzac White	1m	5 litre	13
CC <i>Callistemon citrinus</i>	Crimson Bottlebrush	2m	5 litre	7
DE <i>Doryanthes excelsa</i>	Gymea Lily	1-2m	5 litre	7
GFC <i>Grevillea 'Fire Cracker'</i>	Fire Cracker	1m	5 litre	16
GS <i>Grevillea sericea</i>	Pink Spider Flower	1-2m	5 litre	14
HGN <i>Hymenosporum 'Gold Nugget'</i>	Gold Nugget Frangipani	0.7m	5 litre	5
LP <i>Leptospermum polygalifolium</i>	Yellow Tea Tree	2-3m	25 litre	7
MCC <i>Melaleuca 'Cotton Candy'</i>	Cotton Candy Honey Myrtle	1m	5 litre	5
OM <i>Olearia microphylla</i>	Small-Leaved Daisy Bush	1m	5 litre	7
PFG <i>Philothea 'Flower Girl'</i>	Wax Flower	1.5m	5 litre	10
YF <i>Yucca filamentosa</i>	Adam's Needle	1-2m	5 litre	9
Grasses				
DC <i>Dianella caerulea</i>	Blue Flax Lily	0.5m	150mm	22
DRV <i>Dianella revoluta</i>	Paroo Lily	0.6m	150mm	36
LGW <i>Lomandra 'Great White'</i>	Great White Mat-Rush	0.5m	150mm	44
LLF <i>Lomandra filiformis</i>	Wattle Mat-Rush	0.4m	150mm	14
LF <i>Lomandra longifolia</i>	Spiny-headed Mat-Rush	1m	150mm	8
MS <i>Microlaena stipoides</i>	Weeping Grass	0.4m	150mm	10
PK <i>Poa 'Kingsdale'</i>	Kingsdale	0.5m	150mm	44
POL <i>Poa labillardieri</i>	Common Tussock Grass	0.8m	150mm	13
SG <i>Stypandra glauca</i>	Nodding Blue Lily	1m	150mm	8
Groundcovers, Climbers				
GBR <i>Grevillea 'Bronze Rambler'</i>	Bronze Rambler	0.2m	150mm	24
GMT <i>Grevillea 'Mt Tamboritha'</i>	Mount Tamboritha	0.2m	150mm	18
HV <i>Hardenbergia violacea</i>	Purple Twining-Pea	0.2m	150mm	58

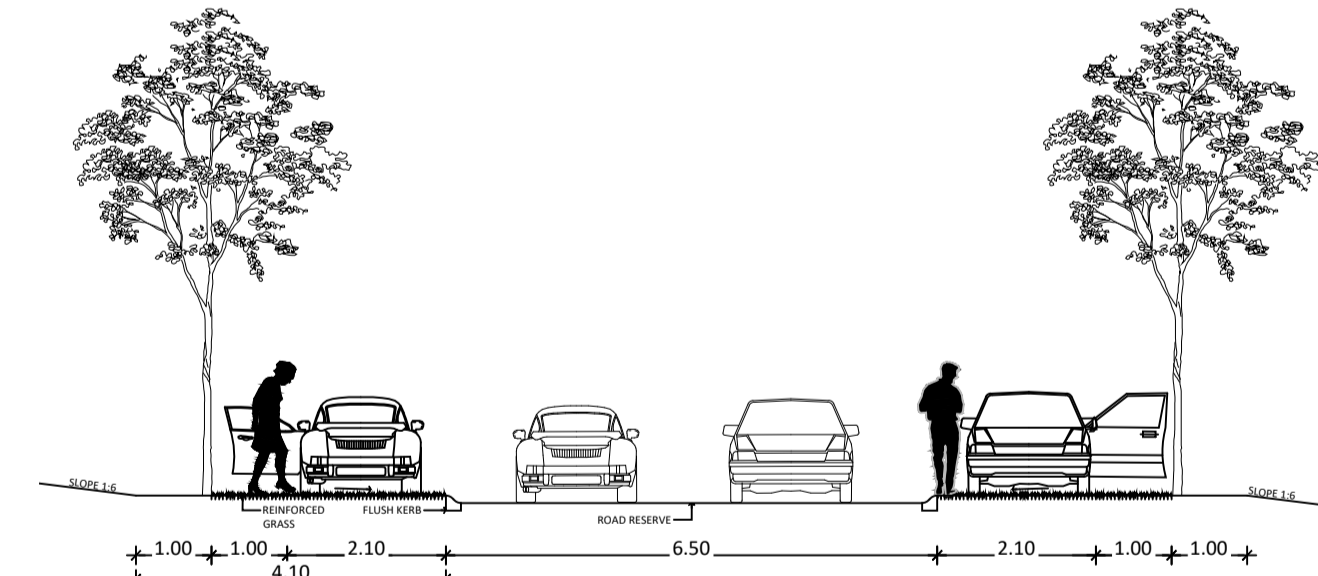
*Cumberland Plain Woodland Species



TYPICAL BURIAL ROOM SCREEN DETAIL
1:200



TYPICAL ONE-WAY ROAD SECTION/PLAN
1:100



TYPICAL TWO-WAY ROAD SECTION/PLAN
1:100

Issue:	Rev:	Description:	Date:
DA		FOR APPROVAL	10.12.19

Project title:
NEPEAN MEMORIAL PARK

Drawing title:
DETAILS SHEET

Principal consultant: Florence Jaquet
Client:

Florence Jaquet
Landscape architect
A: 8 Rowett Avenue, Canberwell 3124
E: flo@fja.com.au
M: 0419 983 641

NARELLE SONTNER
BOTANICA
LANDSCAPE AND HORTICULTURAL SPECIALISTS
PO Box 611 Avalon NSW 2107
Tel: (02) 9918 4016 Mobile: 0419 501 144

Job no: 170925

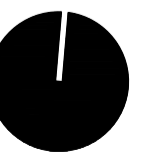
Drawn by: EH

Checked by: NS

Scale: AS SHOWN @ A1

CAD file name:

Plot date:



Drw no:
L508

Sheet no:
8/8