

Documentation for Tandara Childcare Centre

ARCHITECTURAL DRAWING SCHEDULE

DRAWING No.	DESCRIPTION	REV
GE - 001	GENERAL COVERSHEET	D
GE - 002	GENERAL SPECIFICATION	D
GE - 003	GENERAL FINISHES SCHEDULE	D
GE - 004	GENERAL FINISHES SCHEDULE	D
GE - 005	GENERAL FINISHES SCHEDULE	D
GE - 006	GENERAL FIXTURES AND FITTING SCHEDULE	D
GE - 007	DOOR + WINDOW SCHEDULE TANDARA	D
GE - 008	DOOR + WINDOWS SCHEDULE WATTLE GLENN	D
TANDARA CHILDREN'S CENTRE		
TAN - 001	TANDARA - SITE PLAN + SCOPE OF WORKS	D
TAN - 002	TANDARA - EXTERNAL WORKS DEMOLITION	D
TAN - 003	TANDARA - GROUND FLOOR DEMOLITION	D
TAN - 004	TANDARA - GROUND FLOOR GENERAL ARRANGEMENT	D
TAN - 005	TANDARA - EXTERNAL WORKS	D
TAN - 006	TANDARA - REFLECTED CEILING PLAN	D
TAN - 007	TANDARA - ROOF PLAN	D
TAN - 008	TANDARA - INTERNAL ELEVATIONS / SECTIONS	D
TAN - 009	TANDARA - EXTERNAL ELEVATIONS / SECTIONS	D
TAN - 010	TANDARA - WET AREA DETAIL PLAN	D
TAN - 011	TANDARA - WET AREA DETAIL PLAN	D
TAN - 012	TANDARA - WET AREA ELEVATIONS	D
TAN - 013	TANDARA - WET AREA ELEVATIONS	D
TAN - 014	TANDARA - WET AREA ELEVATIONS	D
TAN - 015	TANDARA - WET AREA ELEVATIONS	D



GENERAL ABBREVIATIONS

ADJ.	Adjustable
AMB	Ambulant
BCT	Baby Change Table
CL	Centre Line
CPT	Carpet
COL.	Column
CONC.	Concrete
COS	Check on site
CUPBDS.	Cupboard
C/T	Cooktop
DG	Door grille
DOCS.	Documentation
DRY	Dryer
ENG.	Engineer
EQ	Equal
ER	Epoxy Resin Flooring
ERC	Epoxy Resin Coving
EX.	Existing
F	Fridge
FHR	Fire Hose Reel
FR	Freezer
FW	Floor Waste
GR	Grab Rail
HB	Hand Basin
HC	Cold Water Stop Cock Valve
HD	Hand Dryer
HWB	Hand Wash Basin
KB	Kick Board
MI	Mirror
MW	Microwave
O/H	Overhead
OV	Oven
PTD	Paper Towel Dispenser
R/H	Rangehood
SB	Splash Back
SHWR	Shower
SK	Sink
SPEC.	Specification
SS	Stainless Steel
TAP	Tap
TRH	Toilet Paper Roll Holder
UNO	Unless Noted Otherwise
VN	Vinyl
VNC	Vinyl Coving
WC	Toilet Pan
W/	With
WM	Washing Machine

D Issue for Tender		JOS	30/11/18	-	Copyright *This document is & shall remain the property of Complete Urban Pty. Ltd. The document may only be used for the purposes for which it was commissioned & in accordance with the terms of engagement for the commission. Unauthorised use of this document in any way is prohibited.		10 Regent Street Chippendale NSW 2008 p 02 9282 9900 f 02 9282 9277 COMPLETE ABN 64 100 037 812 www.completeurban.com.au	Client and Job Penrith City Council Documentation for Tandara Childcare Centres	
C Issue to Consultants + Client for Review		JOS	28/09/18	-				Title GENERAL COVER SHEET	
B Issue for Review		JOS	17/09/18	-				Drawn Designed Drafting Check Design Check Approved	
A Preliminary Issue for Review		JOS	07/08/18	-				Drg. No. 2826- GE - 001 Size A1 Rev D	
No.	Revision - Revise on CAD do not amend by hand	Checked	Approved	Date	M/Rev	Status PRELIMINARY ISSUE FOR REVIEW		This Drawing must not be used for construction unless signed as Approved	

General Requirements

Structural: If required, provide structures, installations and components to the AS 1170 series.
General: The works include development of the design beyond that documented, as required.
Design by contractor: If the contractor provides design, use only appropriately qualified persons and conform to all statutory requirements.
Conflict with the documents: If it is believed that a conflict exists between statutory requirements and the documents, notify the contract administrator immediately and provide a recommendation to resolve the conflict.
 Use documents which are the editions, with amendments, current 3 months before the closing date for tenders, except where other editions or amendments are required by statutory authorities.
 The following abbreviations apply:
 - AS: Australian Standard.
 - BCA: National Construction Code Series Volume One: Building Code of Australia Class 2 to 9 Buildings and Volume Two: Building Code of Australia Class 1 and Class 10 Buildings.
 - WHS: Work Health and Safety.
 The following definitions apply:
 - Access for maintenance: Includes access for maintenance, inspection, measurement, operation, adjustment, repair, replacement and other maintenance related tasks.
 - Contract administrator: Has the same meaning as architect or superintendent and is the person appointed by the owner or principal under the contract.
 - Contractor: Has the same meaning as builder and is the person or organisation bound to carry out and complete the work under the contract.
 - Documented: Documented, as documented and similar terms mean contained in the contract documents.
 - Joints:
 . Control joint: An unreinforced joint between or within discrete elements of construction which allows for relative movement of the elements.
 . Expansion joint: A closing control joint with the joint surfaces separated by a compressible filler to allow axial movement due to thermal expansion or contraction with changes in temperature or creep. It may include unbound dowels to assist vertical deflection control.
 - Local (government) authority: A body established for the purposes of local government by or under a law applying in a state or territory.
 - Manufacturer's recommendations: Recommendations, instructions, requirements, specifications (and similar expressions) provided in written or other form by the manufacturer and/or supplier relating to the suitability, use, installation, storage and/or handling of a product.
 - Practical completion or defects free completion: The requirements for these stages of completion are defined in the relevant building contract for the project.
 - Principal: Principal has the same meaning as owner, client and proprietor and is the party to whom the contractor is legally bound to construct the works.
 - Proprietary: Identifiable by naming the manufacturer, supplier, installer, trade name, brand name, catalogue or reference number.
 - Provide: Provide and similar expressions mean supply and install and include development of the design beyond that documented.
 - Record drawings: Record drawings has the same meaning as as-installed drawings, as-built drawings and work-as-executed drawings.
 - Required: Required by the contract documents, the local council or statutory authorities.
 - If required: A conditional specification term for work which may be shown in the documents or is a legislative requirement.
 - Tolerance: The permitted difference between the upper limit and the lower limit of dimension, value or quantity.
 - Verification: Provision of evidence or proof that a performance requirement has been met or a default exists.
General: Layouts of service lines, plant and equipment shown on the drawings are diagrammatic only, except where figured dimensions are provided or calculable.
 Before commencing work:
 - Obtain measurements and other necessary information.
 - Coordinate the design and installation in conjunction with all trades.
 If holes and chases are required in masonry walls, make sure structural integrity of the wall is maintained.

If a warranty is documented, name the principal as warrantee. Register with manufacturers as necessary. Retain copies delivered with components and equipment.
 Before the date for practical completion, clean throughout, including all exterior and interior surfaces except those totally and permanently concealed from view.

Demolition (Interior and Alterations)
Requirement: Carry out demolition, as documented.
Demolition: To AS 2601.
Evidence of compliance: Before commencing demolition, submit evidence of the following:
 - A permit to demolish has been obtained from the appropriate authority.
 - Certification that each person having access to the construction site has completed a WHS induction training procedure which is site-specific.
 Prepare a Hazardous substances management plan to AS 2601 clause 1.6. Any hazardous materials are to be removed in accordance with AS 2601 clause 1.6.2.
 Submit a work plan before demolition or stripping work. Submit the locations and evidence of compliance with the relevant authorities for the disposal of material required to be removed from the site.
 Dilapidation record: Submit a copy of the dilapidation record including photographs as required for each site before commencement of work. The dilapidation record will be used to assess the damage and rectification work arising out of demolition work.
 Give notice so that inspection may be made of the services before disconnection or diversion, contents of building before commencement of demolition and the site after removal of demolished materials.

Until permanent support is provided, provide temporary support for sections of existing buildings which are to be altered and which normally rely for support on work to be demolished. Prevent the encroachment of demolished materials onto adjoining areas of the buildings not affected by the works and including public places.
 Provide dust-proof screens, bulkheads and covers to protect existing finishes and the immediate environment from dust and debris.
 If an external wall or roof is opened for alterations and additions, provide security against unauthorised entry to the building. Decommission, isolate, demolish and remove from the site all existing redundant equipment including associated components that become redundant as a result of the demolition.
 Clear away temporary supports at completion of demolition and repair any damage arising out of demolition work.

Brick and Block Construction
Requirement: Provide brick and block construction, as documented.
Materials and construction: To AS 3700.
Angles and flats: To AS/NZS 3679.1.
Standard: To AS/NZS 2699.1.
Bond: Stretcher bond.
 Provide a control joint where joining to existing structures. Do not tooth new masonry into existing work unless approved by a professional engineer.
General: Regulate the rate of construction to eliminate joint deformation, slumping or instability.

Cubicle Systems
 Provide cubicles, as documented.
 Submit samples of each selected panel and door finish, at least 300 x 300 mm, with associated selected edge strips and trims. Submit the manufacturer's published product warranties.
 Compact high pressure decorative laminate panels with an integral surface finish and edges sealed by the manufacturer.

Lining
 Provide internal lining systems, as documented and suitable substrate for the nominated final finish.
Substrates: Plumb, level, in true alignment and to the lining manufacturer's recommendations.
Timber, steel framing and battened masonry: To AS/NZS 2589 clause 4.2.
Plasterboard: To AS/NZS 2588.
Fibre Cement: To AS/NZS 2908.2.
Wall and ceiling linings: Type B category 2.
 As shown on drawings. Minimum thickness: 6.0 mm.
 Before fixing linings, check and adjust the alignment of substrates or framing, if necessary.
 Fix battens at each crossing with structural framing members, to solid walls or ceiling support. Provide wall plugs in solid substrates.
 Provide accessories and trim as necessary to complete the installation.

Install timber battens as follows:
 - Where framing member spacing exceed the recommended spacing.
 - If required to support fixtures.
Flush joints: Provide recessed edge sheets and finish flush using perforated paper reinforcing tape.
Wet areas: Install additional supports, flashings, trim and sealants as required.
 Provide trim such as beads, mouldings and stops to make neat junctions between lining components, finishes and adjacent surfaces.

Fire Extinguishers and Blankets
 Provide fire extinguishers and fire blankets to all canteens as per Australian Standards.
 Provide portable fire extinguishers and location signs to AS 1841 and AS2444.
 Provide fire blankets To AS/NZS 3504.

Doors and Access Panels
 Provide doors, frames, doorsets, security screen doors and fire-resisting doorsets, as documented.
Steel Frames: Continuously welded from metallic-coated steel sheet sections, including accessories such as buffers, strike plates, spreaders, mortar guards, switch boxes, fixing ties or brackets, and cavity flashing with provision for fixing documented hardware and electronic security assemblies, and prefinished with a protective coating.
Timber Frames: To AS 2796.1:
 Provide flush doors of balanced construction.
Cellular core and intermediate rail core flush doors:
 - Provide a subframe of 25 mm minimum width timber around openings for louvres and glazing.
 - Provide additional material to take hardware, fastenings and grooves.
Solid core: Solid flush doors as follows:
 - Flush door with blockboard: Core plate of timber strips laid edge to edge, fully bonded to each other and to facings each side of no less than two sheets of timber veneer.
Medium density fibreboard doors: Single thickness of moisture resistant general purpose medium density fibreboard with the same surface finish to both sides, for internal use.
 Provide a weather bar under hinged external doors, locate under the centres of closed doors.
 Install the frames plumb, level, straight and true.
 Build steel frames into masonry: Attach galvanized steel rods to jambs, build in and grout up.
 Build timber frames into masonry: Screw galvanized steel brackets twice to jambs and build in.
 Install flashings, weather bars, drips, storm moulds, caulking and pointing to prevent water from penetrating the building between the door frame and the building structure under the prevailing service conditions, including normal structural movement of the building.
 Prime timber door leaves on top and bottom edges before installation.
 Make sure moving parts operate freely and smoothly, without binding or sticking, at correct tensions or operating forces and that they are lubricated where appropriate.

Metalwork - Fabricated
 Provide metal fixtures, as documented.
 Submit shop drawings to a scale that best describes the detail. Submit names and contact details of proposed suppliers and installers.
 Provide non-galvanic corrosion fasteners.
Fixing to stainless steel: Provide appropriate stainless steel materials only.
 Fabricate and pre-assemble items in the workshop wherever practicable.
 affected joint surfaces.

Waterproofing - Wet Areas
 Provide wet area waterproofing systems below all tile installations. Grade to floor wastes, to dispose of water without ponding. Prevent moisture entering the substrate or adjacent areas
Standard: To AS 3740.
 Provide a proprietary membrane systems certified as suitable for the intended wet area waterproofing.
 Membrane directly under the floor finish: Make sure the fall in the substrate conforms to the fall documented for the finish.
 Protect membrane from damage during installation and for the period after installation until the membrane achieves its service characteristics that document its performance.
Waterproof or water resistant surfaces: To the requirements of BCA F1.7.

Joinery
 Provide joinery, as documented.
 Fabricate and install joinery items to substrates undamaged, plumb, level, straight and free of distortion.
 Before fabrication, submit shop drawings to a scale that best describes the detail.
Particleboard: To AS/NZS 1859.1.
MDF to AS/NZS 1859.2.
High Pressure decorative laminate (HPDL To AS/NZS 2924.1.
Stainless steel: Type 304, fine finished finish.
Kitchen assemblies: To AS/NZS 4386.1.
Installation: Scribe to floor and secure to wall to provide level platform for carcasses.
Thickness: min 16 mm.
Installation: Secure to walls at not more than 600 mm centres. Laminate undersides of benchtops.
 Provide accessories and trim necessary to complete the installation.
 Do not provide visible fasteners except in the following locations:
 - Inside cupboards and drawer units.
 - Inside open units, in which case provide proprietary caps to conceal fixings.
Visible fasteners: Where fasteners are unavoidable on visible joinery faces, sink the heads below the surface and fill the sinking flush with a material compatible with the surface finish. In surfaces which are to have clear or tinted finish, provide matching wood plugs showing face (not end) grain. In surfaces which are to have melamine finish, provide proprietary screws and caps finished to match.
Fix joinery units to substrates as follows:
 - Floor mounted units: 600 mm centres maximum.
 - Wall mounted units: To each nogging and/or stud stiffener.
 Fix benchtops to carcass at least twice per 600 mm length of benchtop.
 Remove all dust, marks and rubbish from all surfaces and internal spaces. Clean and polish all self-finished surfaces such as anodised and powder coated metals, sanitary ware, glass, tiles and laminates.

Ceramic Tiling
 Provide tiling systems to walls, floors and other substrates as documented.
 - Set out with joints accurately aligned in both directions and wall tiling joints level and plumb.
 - Direct all water flowing from supply points to drainage outlets without leakage to the substrate or adjacent areas.
Slip resistance classification: To AS 4586.
 Submit labelled samples of tiles illustrating the range of variation in colour and finish.
Sample panels: Prepare a sample panel of each type of tiling system as follows:
 Cement based proprietary grout: Mix with water. Fine sand may be added as a filler in wider joints.
Cutting: Cut tiles neatly to fit around fixtures and fittings and at margins where necessary. Drill holes without damaging tile faces. Cut recesses for fittings such as soap holders. Rub edges smooth without chipping.
Laying: Return tiles into sills, reveals and openings. Butt up to returns, frames, fittings, and other finishes. Strike and point up beds where exposed. Remove tile spacers before grouting.
 Set out tiles to give uniform joint widths.
 Set out tiles from the centre of the floor or wall to be tiled.
 Grade floor tiling to even and correct falls to floor wastes and elsewhere as required. Make level junctions with walls. Where falls are not required, lay level.
Fall, general: 1:100 minimum.
 Maintain finished floor level across changes of floor finish including carpet.
Resilient Finishes
 Provide resilient floor finishes to substrates, as documented.
Slip resistance classification: To AS 4586.
 Submit manufacturer's published use, care and maintenance requirements for each type of finish.
 Submit labelled 450mm x 450mm labelled samples of resilient finishes illustrating the range of colour, pattern or texture of the product.
 Submit the manufacturer and installer's warranty of the material, workmanship and application.
Critical radiant flux: To BCA Spec C1.10 tested to AS ISO 9239.1.
 Adhesives to be to the resilient finishes manufacturer's recommendations.
 Use specialist installers recommended by the material manufacturers.
 Set out sheets to give the minimum number of joints. Run sheet joints parallel with the long sides of floor areas.
 Maintain finished floor level across changes of floor finish including carpet.

After fixing, groove the seams using a grooving tool and weld the joints with matching filler rod, using a hot air welding gun. When the weld rod has cooled, trim off flush.
 Provide purpose-made matching moulded accessories for nosings, coves, skirtings, edge cover strips and finishes at junctions, margins, and angles, if available.
 Provide edge cover strips at junctions with different floor finishes and to exposed edges.
 Carry the flooring material up over a profiled coving section to form the skirting and mitre and weld all joints. Make sure the radius of the coving section conforms to the floor finish manufacturer's recommendations for sheeting material and thickness.

Painting
 Provide coating systems to substrates, as documented.
 Store materials not in use in tightly covered containers in well-ventilated areas with temperatures maintained at the manufacturer's recommendations.
Paint types: To AS/NZS 2311.
 Before painting, clean the area and protect it from dust contamination. Use drop sheets and masking agents to protect surfaces, including finished surfaces and adjacent finishes, during painting.
Fixtures and furniture: Remove door furniture, switch plates, light fittings and other fixtures before painting.
 Prepare substrates to receive the painting systems to the paint manufacturer's recommendations.
 Fill cracks and holes with fillers, sealants, putties or grouting cements as appropriate for the finishing system and substrate, and sand smooth.
 If the paint application is by spraying, use conventional or airless equipment which conforms to the following:
 - Satisfactorily atomises paint being applied.
 - Does not require paint to be thinned beyond the maximum amount recommended by the manufacturer.
 - Does not introduce oil, water or other contaminants into the applied paint.
 Maintain door leaf in the open position during drying. Do not allow door hardware or accessories to damage the door finish during the drying process.
 Remove masking and protection coverings before paint has dried.
 On completion of painting, remove splatters by washing, scraping or other methods which do not scratch or damage adjacent finished surfaces.
 Repair, replace or refinish any damage, including works of other trades. Touch up new damaged decorative paintwork or misses only with the paint batch used in the original application.
 Except where one or two coat systems are documented, each paint system consists of at least 3 coats.

D	Issue for Tender	JOS	30/11/18	-	
C	Issue to Consultants + Client for Review	JOS	28/09/18	-	
B	Issue for Review	JOS	17/09/18	-	
A	Preliminary Issue for Review	JOS	07/08/18	-	
No.	Revision - Revision on CAD do not amend by hand	Checked	Approved	Date	M/Flm

Copyright
 *This document is & shall remain the property of Complete Urban Pty. Ltd.
 The document may only be used for the purposes for which it was commissioned & in accordance with the terms of engagement for the commission.
 Unauthorised use of this document in any way is prohibited.



10 Regent Street
 Chippendale NSW 2008
 p 02 9282 9900
 f 02 9282 9277



Drawn	Designed
Drafting Check	Design Check
Approved	

Penrith City Council	
Documentation for [redacted] Tandara Childcare Centres	
Title GENERAL SPECIFICATION NOTES	
Drg. No.	2826- GE - 002
Size	A1
Rev	D

FINISHES SCHEDULE

FLOORS

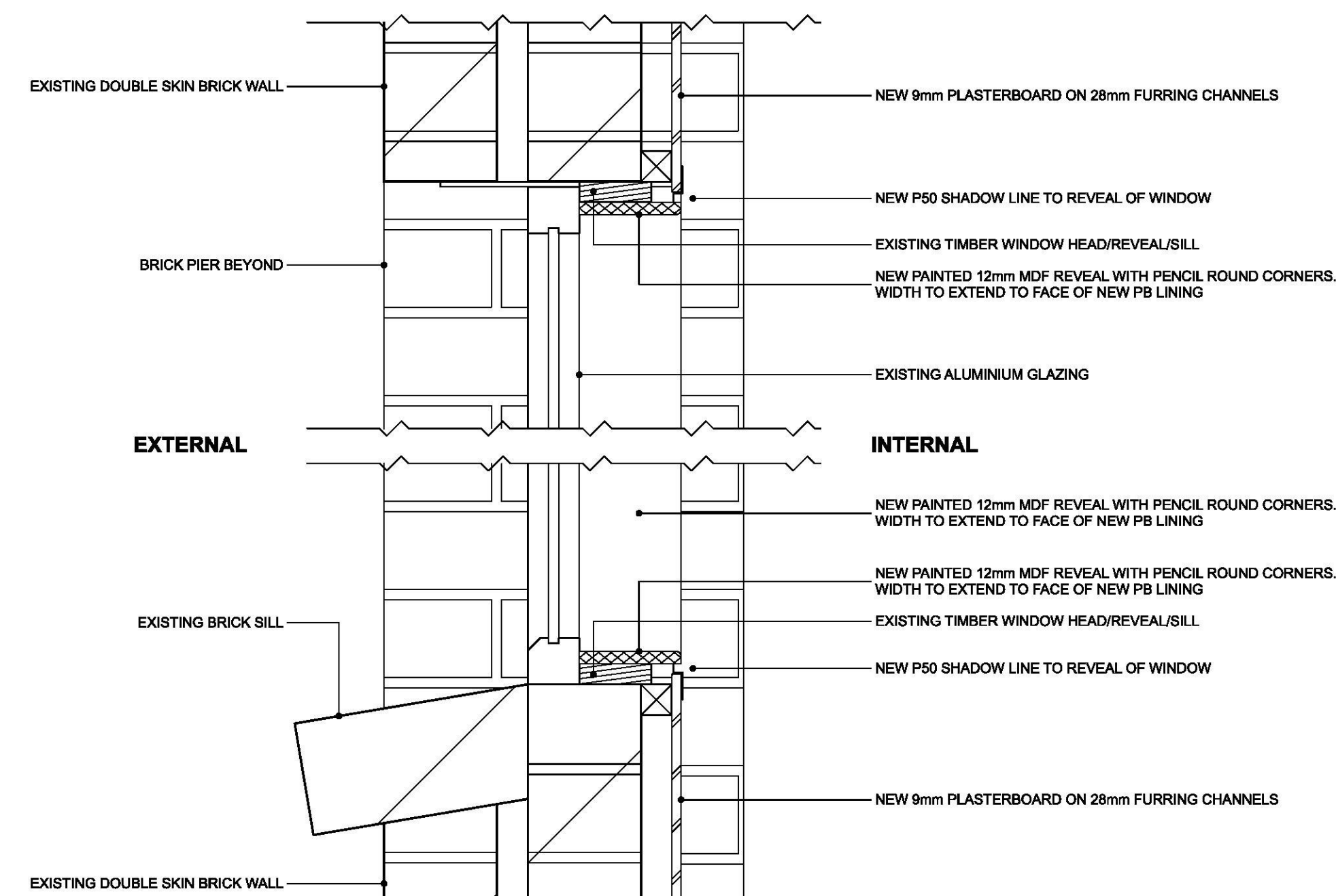
ER	FLOOR SURFACE – EPOXY RESIN
Brand	Allnex
Model	Terraflake
Type	Pitch
Note	To comply with AS4674/AS3554 Provide Epoxy Coving. Floor surface to continue from floor to height of 150mm with a minimum radius of 25mm
VN1	FLOOR SURFACE – VINYL
Brand	Tarkett
Model	Accent Ruby
Type	Wood - 3755036
Note	
VN2	FLOOR SURFACE – VINYL
Brand	Gerflor
Model	Tarasafe Super
Type	Dove Grey - 7767
Note	R12 Slip Resistance Lay on suitably prepared subfloor. Hot welded colour joints to match as required Min 25mm radius in corners and continue up at all wall junctions or kickplates 150mm. Cove to have a preformed back piece. Provide suitable cover strips at all thresholds
CT.	FLOOR SURFACE – CERAMIC TILES OUTDOOR
Description	Ceramic Tile
Size	300x600 mm
Colour	TBC BY CLIENT
Setout	As shown on drawings
Grout	Epoxy Grout - Black
Note	Provide colour match caulking to all corners Ensure correct slip rating in accordance with Australian Standard
Waterproofing	ARDEX WPM 001 one part acrylic modified fibre reinforced membrane installed in accordance with manufacturer's recommendations
CPT.	FLOOR SURFACE – CARPET TILES
Brand	Ontera
Model	Envisions Range
Type	Base Colour – Reef 986
Note	
CONC.	CONCRETE SLAB – OUTDOOR SPACE
Description	Reinforced concrete slab
Thickness	Refer structural engineer's documentation
Finish	Plain w/Coving Finish
Note	Ensure correct slip rating in accordance with Australian Standard

WALLS

EXTERNAL	BRICK VENEER
Description	New brick veneer wall to match existing
Note	Internal and External surfaces to match existing
EXTERNAL	DOUBLE BRICK
Description	New brick veneer wall to match existing
Note	Internal and External surfaces to match existing
STUD	TIMBER
Description	90 x 35mm MG10 Timber studs at max 450mm crs
Note	Refer to Structural Engs. Documents
LINING	GENERAL – PLASTERBOARD
Lining	9mm Plasterboard. Lining to be flushed ready for paint
Finish	Paint to all exposed surfaces.
Notes	Tape set and sand all joints as required
LINING	TANDARA – PLASTERBOARD ON BATTENS FIXED TO EXISTING BRICKWORK
Lining	9mm Plasterboard on 28mm Furring Channels. Lining to be flushed ready for paint
Finish	Paint to all exposed surfaces.
Notes	Tape set and sand all joints as required Refer Detail for Head + Sill finishes
LINING	WET AREAS – FIBRE CEMENT
Lining	6.0mm VillaBoard. Lining to be flushed ready for paint
Finish	Paint to all exposed surfaces.
Notes	Tape set and sand all joints as required
FINISH	CERAMIC TILE
Description	Ceramic Tile
Size	300x600 mm
Colour	Gloss White
Setout	As shown on drawings
Grout	Epoxy Grout - Black
Note	Provide colour match caulking to all corners
Waterproofing	ARDEX WPM 001 one part acrylic modified fibre reinforced membrane installed in accordance with manufacturer's recommendations
SKIRTINGS	ALUMINIUM FLAT
Description	Brushed Aluminium Skirting
Note	To be installed in Hallways and high traffic areas
SKIRTINGS	ALUMINIUM DUCTED
Description	35 x 150mm Anodised Aluminium Skirting
Note	3 x Channel
CORNER	PROTECTION EDGE PROTECTION STRIPS
Description	Clear corner edge protection strips. To Council Specifications.
Note	To be installed to all corners in high traffic areas to prevent damage to walls and paintwork
PIER	200MM BLOCKWORK PIER – ENTRY
Manufacturer	Austral –
Type	Hollow, load bearing, fire rated block
Size	390 x 190 x 190 (20.01)
Joints	Round tooled joint
Finish	TBC BY CLIENT
Structural	Core filled in accordance with engineer's documentation
Note	Provide other special block shapes as necessary including 1/2 blocks, 3/4 blocks, 1/4 blocks, 1/2 height etc.

CEILING

LINING	GENERAL – PLASTERBOARD SHEET
Fixing	Direct fix to trusses
Lining	9mm Plasterboard. Lining to be flushed ready for paint
Finish	Paint to all exposed surfaces.
LINING	WET AREAS – FC SHEET
Fixing	Direct fix to trusses
Lining	6.0mm VillaBoard. Lining to be flushed ready for paint
Finish	Paint to all exposed surfaces.
CORNICE	SCOTIA CORNICE
Description	New cornice to be 60mm Scotia Cornice
Finish	Existing cornice to be renewed/repared as required Paint to new and existing
ROOFING	
RF1	PROPRIETARY INSULATED ROOF PANEL SYSTEM – 100MM THICK (TBC BY CLIENT WITH STRUCTURAL ENG.)
Deck	Top Finish – Corrugated Bottom Finish – Flat Finish: Colorbond (Colour: TBC BY CLIENT) Fixing: To manufacturer's printed specifications
Flashings	0.6mm thick steel sheet Finish: Colorbond (Colour: TBC BY CLIENT) Profile: As shown on drawings
Cappings	Finish: Colorbond (Colour: TBC BY CLIENT) Profile: As shown on drawings
Eaves Gutter	To match existing gutters onsite
Leaf Guard	Leaf Guard:Stainless steel mesh or colorbond coated mesh to match roof colour fixed in accordance with manufacturer's recommendations.
Downpipe	Diam 100 Colorbond Steel (Colour: TBC BY CLIENT). Connect to stormwater system in accordance with engineer's documentation. Provide removable inspection point 100mm above slab level.
Warranty	20 Year Watertight Installation Guarantee on concealed fix roof sheeting and the entire completed installation including penetrations.
Note	Provide Bitumen Impregnated foam gasket to close off flutes to roof sheet over external walls. Provide all proprietary parts for installation including the following; Receiver Channel, Flashings, Cappings, Gutters + Brackets, Posts – incl. Post Base, Post / Beam connector, Beams and Beam connectors
RF2	PROPRIETARY INSULATED ROOF PANEL SYSTEM – 150MM THICK (TBC BY CLIENT WITH STRUCTURAL ENG.)
Deck	Top Finish – Corrugated Bottom Finish – Flat Finish: Colorbond (Colour: TBC BY CLIENT) Fixing: To manufacturer's printed specifications
Flashings	0.6mm thick steel sheet Finish: Colorbond (Colour: TBC BY CLIENT) Profile: As shown on drawings
Cappings	Finish: Colorbond (Colour: TBC BY CLIENT) Profile: As shown on drawings
Eaves Gutter	To match existing gutters onsite
Leaf Guard	Leaf Guard:Stainless steel mesh or colorbond coated mesh to match roof colour fixed in accordance with manufacturer's recommendations.
Downpipe	Diam 100 Colorbond Steel (Colour: TBC BY CLIENT). Connect to stormwater system in accordance with engineer's documentation. Provide removable inspection point 100mm above slab level.
Warranty	20 Year Watertight Installation Guarantee on concealed fix roof sheeting and the entire completed installation including penetrations.
Note	Provide Bitumen Impregnated foam gasket to close off flutes to roof sheet over external walls. Provide all proprietary parts for installation including the following; Receiver Channel, Flashings, Cappings, Gutters + Brackets, Posts – incl. Post Base, Post / Beam connector, Beams and Beam connectors



TYPICAL INTERNAL PB DETAIL - TANDARA
1:5 @ A1

<p>Copyright *This document is & shall remain the property of Complete Urban Pty. Ltd. The document may only be used for the purposes for which it was commissioned & in accordance with the terms of engagement for the commission. Unauthorized use of this document in any way is prohibited.</p>		<p>Client and Job Penrith City Council Documentation for [Redacted] Tandara Childcare Centres</p>	
<p>Scale 0 1 2 1:50 A1 UNREDUCED 1:50 AT A1 1:100 AT A3</p>		<p>50 Regent Street Chippendale NSW 2008 p 02 9282 9900 f 02 9282 9277 COMPLETE ABN 64 100 037 812 www.completeurban.com.au</p>	
<p>Issue for Tender JOS 30/11/18 -</p>		<p>Drawn Design Drafting Design Check Check Approved</p>	
<p>Issue to Consultants + Client for Review JOS 28/09/18 -</p>		<p>Title GENERAL FINISHES SCHEDULE</p>	
<p>Issue for Review JOS 17/09/18 -</p>		<p>Drg. No. 2826- GE - 003</p>	
<p>Preliminary Issue for Review JOS 07/08/18 -</p>		<p>Size A1 Rev D</p>	
<p>No. Revision - Revise on CAD do not amend by hand Checked Approved Date M/Fm PRELIMINARY ISSUE FOR REVIEW</p>		<p>This Drawing must not be used for Construction unless signed as Approved</p>	

METALWORK SCHEDULE

SERVICES

ENCLOSURE LOUVRE SCREEN / FENCE + DOUBLE GATE

Material Aluminium Louvre Screen
Description 65 x 16mm louvres at 30mm spacings
Colour Powdercoat Slate Grey
Fixing As per manufacturers details
Notes Refer Gate Schedule for sizes

1800H FENCING + GATE - FRONT ENTRY

Manufacturer Penrith Wrought Iron
Description To match existing perimeter fencing
Fixing As per manufacturers details
Colour To match existing
Notes Provide auto close.
Door hardware to be coordinated with Electronic door opener

1200H FENCING + GATE - FRONT ENTRY

Manufacturer Penrith Wrought Iron
Description To match existing 1800H fencing
Fixing As per manufacturers details
Colour To match existing
Notes Provide pool latch with auto close to gate

TANDARA BALUSTRADE BARRIER AND HANDRAIL - RAMP

Description Disability Balustrade with Double Handrail
Material Powdercoated Steel
Size Stanchions - 40mm NB
Verticals - 12mm Round
Handrail - 32mm NB (double as per drawings)
Fixing As detailed - base plate to be fixed to concrete in accordance with manufacturers specification.
Handrail bracket pin fixed to stanchions as per manufacturers details.
Finish Powdercoat - Shale Grey
Notes To comply with the NCC. And AS1428.
Balustrade system to be designed and certified by manufacturer.
Shop Drawings Provide shop drawings

TANDARA BALUSTRADE BARRIER AND HANDRAIL - STAIRS

Description Disability Balustrade with Handrail
Material Powdercoated Steel
Size Stanchions - 40mm NB
Verticals - 12mm Round
Handrail - 32mm NB
Fixing As detailed - base plate to be fixed to concrete in accordance with manufacturers specification.
Handrail bracket fixed to stanchions as per manufacturers details.
Finish Powdercoat - Shale Grey
Notes To comply with the NCC. And AS1428.
Balustrade system to be designed and certified by manufacturer.
Shop Drawings Provide shop drawings

STAIR NOSINGS

Manufacturer Tactile Systems Australia
Description Anodised aluminium. (AS1428 2009 compliant)
Finish TSA Stair-Tech Carbide Grit (CG10-BLA) : Silicon Carbide 36# Grit R13 Anti-slip to comply with AS 1428.4-2009
Fixing As per manufacturers details
Extent All stairs.

PAINTING SCHEDULES

DOOR PANEL + FRAME COLOUR

System Paint: Dulux Aquanamel Semi Gloss. 3 coats. Apply primer, sealer or undercoat to suit substrate in accordance with manufacturer's recommendations.
Preparation In accordance with manufacturer's printed specifications
Colour Dulux - Shale Grey
Confirm minimum luminance contrast between door leaf and adjacent wall is provided in accordance with AS1428.1 2009
Notes Generally coat all new work with one base coat and two top coats allowing for suitable preparation work and sanding between coats as required.
Extend new paintwork into the nearest practical corners/junctions when blending into existing work.
Ensure clean up carried out in a suitable location away from stormwater drains.

FIBRE CEMENT LINING - WALLS

System Paint: Dulux Wash & Wear Plus Low Sheen. 3 coats. Apply primer, sealer or undercoat to suit substrate in accordance with manufacturer's recommendations.
Preparation In accordance with manufacturer's printed specifications
Colour Dulux - 'Hogs Bristle' 1/2 strength
Notes Generally coat all new work with one base coat and two top coats allowing for suitable preparation work and sanding between coats as required.
Extend new paintwork into the nearest practical corners/junctions when blending into existing work.
Ensure clean up carried out in a suitable location away from stormwater drains.

PLASTERBOARD LINING - WALLS

System Paint: Dulux Wash & Wear Plus Low Sheen. 3 coats. Apply primer, sealer or undercoat to suit substrate in accordance with manufacturer's recommendations.
Preparation In accordance with manufacturer's printed specifications
Colour Dulux - 'Hogs Bristle' 1/2 strength
Notes Generally coat all new work with one base coat and two top coats allowing for suitable preparation work and sanding between coats as required.
Extend new paintwork into the nearest practical corners/junctions when blending into existing work.
Ensure clean up carried out in a suitable location away from stormwater drains.

TIMBER / TRIMS

System Paint: Dulux Aquanamel Semi Gloss. 3 coats. Apply primer, sealer or undercoat to suit substrate in accordance with manufacturer's recommendations.
Preparation In accordance with manufacturer's printed specifications
Colour Dulux - 'Hogs Bristle' 1/2 strength
Confirm minimum luminance contrast between door leaf and adjacent wall is provided in accordance with AS1428.1 2009
Notes Generally coat all new work with one base coat and two top coats allowing for suitable preparation work and sanding between coats as required.
Extend new paintwork into the nearest practical corners/junctions when blending into existing work.
Ensure clean up carried out in a suitable location away from stormwater drains.

PLASTERBOARD CEILING LINING - INTERNAL CEILINGS

System Paint: Dulux Ceiling White. 3 coats. Apply primer, sealer or undercoat to suit substrate in accordance with manufacturer's recommendations.
Preparation In accordance with manufacturer's printed specifications
Colour Dulux - 'Ceiling White'
Notes Generally coat all new work with one base coat and two top coats allowing for suitable preparation work and sanding between coats as required.
Extend new paintwork into the nearest practical corners/junctions when blending into existing work.
Ensure clean up carried out in a suitable location away from stormwater drains.

FIBRE CEMENT CEILING LINING - WET AREAS

System Paint: Dulux Ceiling White. 3 coats. Apply primer, sealer or undercoat to suit substrate in accordance with manufacturer's recommendations.
Preparation In accordance with manufacturer's printed specifications
Colour Dulux - 'Ceiling White'
Notes Generally coat all new work with one base coat and two top coats allowing for suitable preparation work and sanding between coats as required.
Extend new paintwork into the nearest practical corners/junctions when blending into existing work.
Ensure clean up carried out in a suitable location away from stormwater drains.

CLEAR COAT FOR CONCRETE

System CCS Streetscape penetrating silane-siloxane sealer.
Preparation In accordance with manufacturer's printed specifications
Colour Clear

FASICA, GUTTERS, DOWNPIPES AND METAL AWNING ROOF

System AcraTex Roof Membrane Satin
Preparation In accordance with manufacturer's printed specifications
Colour TBC BY CLIENT

TILE ROOF

System AcraTex Roof Membrane Satin
Preparation In accordance with manufacturer's printed specifications
Colour TBC BY CLIENT

JOINERY SCHEDULES

ART PREP JOINERY + EQUIPMENT

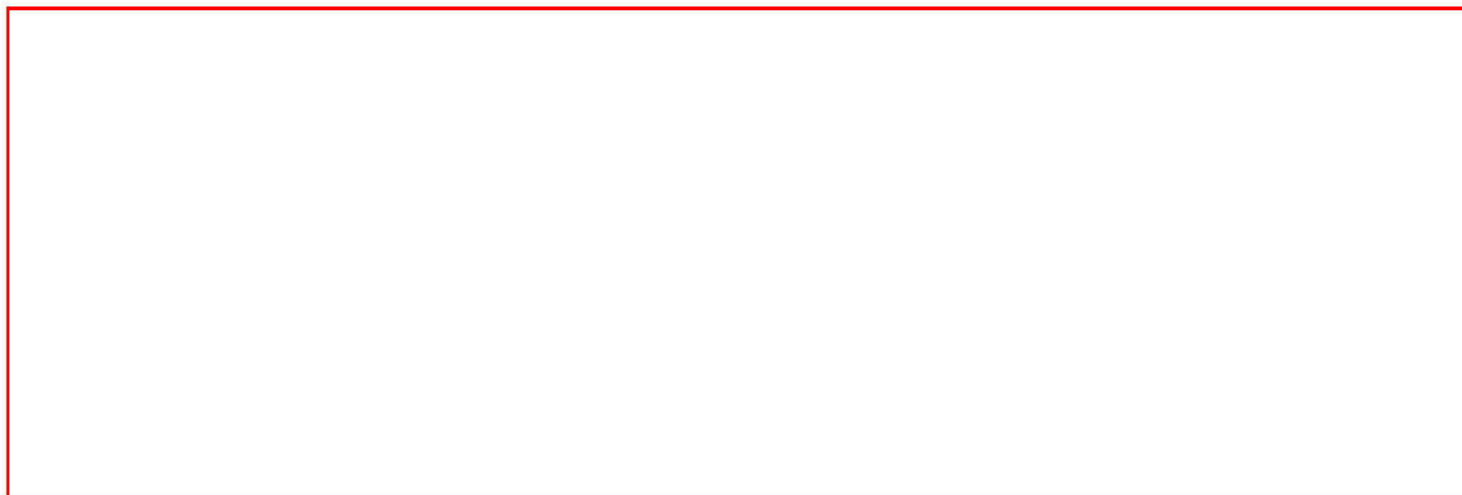
Description Kitchen Cabinetry with above bench cupboards. Refer Drawings
Bench top 33mm HMR particleboard with Laminex Square Form laminate to top and edges.
Colour Laminex TBC BY CLIENT
Cupboard Doors/ Drawers High pressure decorative laminated sheeting on 16mm moisture resistant MDF.
Colour Laminex TBC BY CLIENT
Carcass 16mm Laminex Structural MR overlaid with White high pressure decorative laminated sheeting
Exposed Plinth High pressure decorative laminated sheeting on 16mm moisture resistant MDF.
Colour Laminex TBC BY CLIENT
Internal Shelving 16mm Laminex Structural MR overlaid with White high pressure decorative laminated sheeting
Sink Clark - Monaco Single Left or Right Hand End Bowl Overmount
Enware - SLM606D single lever basin mixer with extended lever handle
Services Water, power, sewer
Shop drawings Provide shop drawings showing full joinery details and finishes including coordination and installation of all equipment and accessories
Handle Lincoln Sentry Glace Joinery handle - natural aluminium
Notes Set 150mm kickboard back 20mm
Overhang top cupboard doors by 20mm to create finger pull
Provide 2mm PVC edge strip where required

BOTTLE PREP JOINERY + EQUIPMENT

Description Kitchen Cabinetry with above bench cupboards. Refer Drawings
Bench top 33mm HMR particleboard with Laminex Square Form laminate to top and edges.
Colour Laminex TBC BY CLIENT
Cupboard Doors/ Drawers High pressure decorative laminated sheeting on 16mm moisture resistant MDF.
Colour Laminex TBC BY CLIENT
Carcass 16mm Laminex Structural MR overlaid with White high pressure decorative laminated sheeting
Exposed Plinth High pressure decorative laminated sheeting on 16mm moisture resistant MDF.
Colour Laminex TBC BY CLIENT
Internal Shelving 16mm Laminex Structural MR overlaid with White high pressure decorative laminated sheeting
Sink Clark - Monaco Single Left or Right Hand End Bowl Overmount
Clark - Round Bowl Overmount
Enware - SLM606D single lever basin mixer with extended lever handle
Services Water, power, sewer
Shop drawings Provide shop drawings showing full joinery details and finishes including coordination and installation of all equipment and accessories
Handle Lincoln Sentry Glace Joinery handle - natural aluminium
Notes Set 150mm kickboard back 20mm
Overhang top cupboard doors by 20mm to create finger pull
Provide 2mm PVC edge strip where required

NAPPY CHANGE JOINERY + EQUIPMENT

Description Kitchen Cabinetry with above bench cupboards. Refer Drawings
Bench top 33mm HMR particleboard with Laminex Square Form laminate to top and edges.
Colour Laminex TBC BY CLIENT
Cupboard Doors/ Drawers High pressure decorative laminated sheeting on 16mm moisture resistant MDF.
Colour Laminex TBC BY CLIENT
Carcass 16mm Laminex Structural MR overlaid with White high pressure decorative laminated sheeting
Exposed Plinth High pressure decorative laminated sheeting on 16mm moisture resistant MDF.
Colour Laminex TBC BY CLIENT
Internal Shelving 16mm Laminex Structural MR overlaid with White high pressure decorative laminated sheeting
Sink Clark - Monaco Main Bowl Overmount
Clark - Round Bowl Overmount



1:50 AT A1
1:100 AT A3

Copyright
This document is & shall remain the property of Complete Urban Pty. Ltd.
The document may only be used for the purposes for which it was commissioned & in accordance with the terms of engagement for the commission.
Unauthorized use of this document in any way is prohibited.



10 Regent Street
Chippendale NSW 2008
p 02 9282 9900
f 02 9282 9277



ABN 64 100 037 812
www.completeurban.com.au

Penrith City Council
Documentation for Tandara Childcare Centres

Table with columns: Drawn, Design, Drafting, Design, Check, Check, Approved

GENERAL FINISHES SCHEDULE

Drg. No. 2826- GE - 004
Scale A1
Rev D

Table with columns: No., Revision, Reviser, Checked, Approved, Date, M/F, Status

A	Services	Enware – SLM606D single lever basin mixer with extended lever handle WELS 4 Star Minimalist Dual Spray Spring Sink Mixer Water, power, sewer	OFFICE JOINERY	Description	Joinery bench with 38mm SHS Powdercoat steel frame with above bench cupboards. Refer Drawings
	Shop drawings	Provide shop drawings showing full joinery details and finishes including coordination and installation of all equipment and accessories		Joinery top	33mm HMR particleboard with Laminex Square Form laminate to top and edges. Colour Laminex TBC BY CLIENT
B	Handle	Lincoln Sentry Glace Joinery handle – natural aluminium	TOILETS JOINERY	Cupboard Doors	High pressure decorative laminated sheeting on 16mm moisture resistant MDF. Colour Laminex TBC BY CLIENT
	Notes	Set 150mm kickboard back 20mm Overhang top cupboard doors by 20mm to create finger pull Provide 2mm PVC edge strip where required		Carcass	16mm Laminex Structural MR overlaid with White high pressure decorative laminated sheeting
C	STAFF ROOM JOINERY + EQUIPMENT		KITCHEN JOINERY + EQUIPMENT	Internal Shelving	16mm Laminex Structural MR overlaid with White high pressure decorative laminated sheeting
	Description	Kitchen Cabinetry with above bench cupboards. Refer Drawings		Exposed Plinth	High pressure decorative laminated sheeting on 16mm moisture resistant MDF. Colour Laminex TBC BY CLIENT
D	Bench top	33mm HMR particleboard with Laminex Square Form laminate to top and edges. Colour Laminex TBC BY CLIENT	SHELVING OPEN SHELVING, BAGGAGE STORE	Services	Water, power, sewer
	Cupboard Doors	High pressure decorative laminated sheeting on 16mm moisture resistant MDF. Colour Laminex TBC BY CLIENT		Shop drawings	Provide shop drawings showing full joinery details and finishes including coordination and installation of all equipment and accessories
E	Carcass	16mm Laminex Structural MR overlaid with White high pressure decorative laminated sheeting	LAUNDRY JOINERY + EQUIPMENT	Description	Kitchen Cabinetry with above bench cupboards. Refer Drawings
	Exposed Plinth	High pressure decorative laminated sheeting on 16mm moisture resistant MDF. Colour Laminex TBC BY CLIENT		Bench top	33mm HMR particleboard with Laminex Square Form laminate to top and edges. Colour Laminex TBC BY CLIENT
F	Internal Shelving	16mm Laminex Structural MR overlaid with White high pressure decorative laminated sheeting	SHELVING OPEN SHELVING, BAGGAGE STORE	Cupboard Doors/ Drawers	High pressure decorative laminated sheeting on 16mm moisture resistant MDF. Colour Laminex TBC BY CLIENT
	Sink	Clark – Monaco Single Left or Right Hand End Bowl Overmount		Carcass	16mm Laminex Structural MR overlaid with White high pressure decorative laminated sheeting
G	Mirror	JD McDonald - Tempered Glass Mirror - Model No 20650B2436 x 2	SHELVING OPEN SHELVING, BAGGAGE STORE	Exposed Plinth	150mm, solid construction (concrete filled)
	Services	Water, power, sewer		Internal Shelving	16mm Laminex Structural MR overlaid with White high pressure decorative laminated sheeting
H	Shop drawings	Provide shop drawings showing full joinery details and finishes including coordination and installation of all equipment and accessories	SHELVING OPEN SHELVING, BAGGAGE STORE	Pantry Fixed Shelving	450mm Wide 25mm Laminex Structural MR overlaid with White high pressure decorative laminated sheeting. Provide appropriate supports
	Handle	Lincoln Sentry Glace Joinery handle – natural aluminium		Sink	Clark – Monaco Double Left or Right Hand End Bowl Overmount
H	Notes	Set 150mm kickboard back 20mm Overhang top cupboard doors by 20mm to create finger pull Provide 2mm PVC edge strip where required	SHELVING OPEN SHELVING, BAGGAGE STORE	Enware	Enware – SLM606D single lever basin mixer with extended lever handle Enware – SLM307A single level 165mm sink mixer
	LAUNDRY JOINERY + EQUIPMENT			Services	Water, power, sewer
H	Description	Kitchen Cabinetry with above bench cupboards. Refer Drawings	SHELVING OPEN SHELVING, BAGGAGE STORE	Shop drawings	Provide shop drawings showing full joinery details and finishes including coordination and installation of all equipment and accessories
	Bench top	33mm HMR particleboard with Laminex Square Form laminate to top and edges. Colour Laminex TBC BY CLIENT		Equipment	Oven – Westinghouse – WVE916SB 900mm under bench Dishwasher – Eswood – ES25 Pass through Dishwasher Cooktop – Westinghouse – WHC924BA 900mm electric ceramic cooktop Fridge / Freezer – Westinghouse – WSE6200SA 620L Side by Side Rangehood – Fisher & Paykel – HC90PLX4 900mm wall chimney pyramid rangehood Microwave – Westinghouse – WMS281SF 900w
H	Cupboard Doors/ Drawers	High pressure decorative laminated sheeting on 16mm moisture resistant MDF. Colour Laminex TBC BY CLIENT	SHELVING OPEN SHELVING, BAGGAGE STORE	Notes	All work to comply with AS4674-2004 (Design, construction and fitout or food premises)
	Carcass	16mm Laminex Structural MR overlaid with White high pressure decorative laminated sheeting		Description	Open Shelving, Baggage Store. Refer Drawings
H	Exposed Plinth	High pressure decorative laminated sheeting on 16mm moisture resistant MDF. Colour Laminex TBC BY CLIENT	SHELVING OPEN SHELVING, BAGGAGE STORE	Carcass	25mm Laminex Structural MR overlaid with White high pressure decorative laminated sheeting
	Internal Shelving	16mm Laminex Structural MR overlaid with White high pressure decorative laminated sheeting		Internal Shelving	25mm Laminex Structural MR overlaid with White high pressure decorative laminated sheeting
H	Sink	Clark – Monaco Square 45L Laundry Sink Overmount	SHELVING OPEN SHELVING, BAGGAGE STORE	Shop drawings	Provide shop drawings showing full joinery details and finishes including coordination and installation of all equipment and accessories
	Sluice	Caroma – 618320W		Notes	Provide 2mm PVC edge strip where required Open Shelving – 2100 H Supports every 900mm. Fixed shelving Baggage Store – 1350 H, 3 Horizontal shelves high. Min. 450 W Vertical supports
H	Change	Easy push button battery operated scissor lift system nappy change table. Reflex SKU: RE KUBAC	SHELVING OPEN SHELVING, BAGGAGE STORE	SHELVING OPEN SHELVING, BAGGAGE STORE	SHELVING OPEN SHELVING, BAGGAGE STORE
	Services	Water, power, sewer			
H	Shop drawings	Provide shop drawings showing full joinery details and finishes including coordination and installation of all equipment and accessories	SHELVING OPEN SHELVING, BAGGAGE STORE	SHELVING OPEN SHELVING, BAGGAGE STORE	SHELVING OPEN SHELVING, BAGGAGE STORE
	Handle	Lincoln Sentry Glace Joinery handle – natural aluminium			
H	Notes	Set 150mm kickboard back 20mm Overhang top cupboard doors by 20mm to create finger pull Provide 2mm PVC edge strip where required	SHELVING OPEN SHELVING, BAGGAGE STORE	SHELVING OPEN SHELVING, BAGGAGE STORE	SHELVING OPEN SHELVING, BAGGAGE STORE
	LAUNDRY JOINERY + EQUIPMENT				

D Issue for Tender		JOS	30/11/18	-	<p>Scale 0 1 2 1:50</p> <p>A1 UNREDUCED</p> <p>1:50 AT A1 1:100 AT A3</p>	<p>Copyright</p> <p>"This document is & shall remain the property of Complete Urban Pty. Ltd.</p> <p>The document may only be used for the purposes for which it was commissioned & in accordance with the terms of engagement for the commission. Unauthorised use of this document in any way is prohibited."</p>		<p>10 Regent Street Chippendale NSW 2008</p> <p>p 02 9282 9900 f 02 9282 9277</p> <p>COMPLETE</p> <p>ABN 64 100 037 812 www.completeurban.com.au</p>	<p>Client and Job</p> <p>Penrith City Council Documentation for Tandara Childcare Centres</p>	<p>Title</p> <p>GENERAL FINISHES SCHEDULE</p>	<p>Drg. No.</p> <p>2826- GE - 005</p>	<p>Size</p> <p>A1</p>	<p>Rev</p> <p>D</p>
C Issue to Consultants + Client for Review		JOS	28/09/18	-									
B Issue for Review		JOS	17/09/18	-									
A Preliminary Issue for Review		JOS	07/08/18	-									
No.	Revision - Revise on CAD do not amend by hand	Checked	Approved	Date	M/Fm	Status	PRELIMINARY ISSUE FOR REVIEW						

FIXTURES AND FITTING SCHEDULE

WET AREA SCHEDULES

FIXTURE + FITTINGS	TOILETS
WC	Childrens Toilet Closed Couple Wall Faced WC Caroma – Liano Junior Cleanflush Wall Faced Toilet Suite (786630W) To be installed on silicon with a silicon joint installed around the pan and cisten and between the pan and cisten connection
HB	Basin Wall Mounted Porcher – Studio Wall Basin 350mm 3 tap hole Posh – Bristol Basin Lever Set (9502222) Basin Set Lever Ceramic Disc
Tap Basin Set	Dispenser Washroom Instant Foam (IFS1LDS) Deb Stoko Sanitiser (SAN1LDS) Interleaved (DIS1005)
Soap Dispenser	Livi – Twin Toilet Roll Dispenser Side by Side (5502)
Hand Sanitiser	Aluminium framed mirror. Size to suit application
Paper Towel Dispenser	
Toilet Paper Dispenser	
Mirror	
FIXTURES + FITTINGS WC 01 + 02	
WC	Closed Couple Wall Faced WC Caroma – Liano Wall Faced Toilet Suite (766200W) To be installed on silicon with a silicon joint installed around the pan and cisten and between the pan and cisten connection
Toilet Paper Dispenser	Livi – Twin Toilet Roll Dispenser Side by Side (5502)
FIXTURE + FITTINGS UNISEX ACCESS WC – ALL FIXTURES AND FITTINGS MUST COMPLY WITH AS1428	
WC	Disabled toilet with closed couple cistern Caroma – Care 800 Cleanflush wall faced suite with backrest and Pedigree 11 Care single flap seat. To be installed on silicon with a silicon joint installed around the pan and cisten and between the pan and cisten connection
HB	Caroma - Care 700 Wall Basin (873410W) Right Hand Shelf with Ceramic Shroud (832601)
Tap Basin Set	Caroma - Acqua Care Basin Mixer (PC: 90989C5A)
Grabrails	Caroma Virtu Comfort 840x700mm RH 140 deg Angle + Caroma Virtu Comfort 450mm Straight
Soap Dispenser	Dispenser Washroom Instant Foam (IFS1LDS)
Hand Sanitiser	Deb Stoko Sanitiser (SAN1LDS)
Paper Towel Dispenser	JD MacDonald – 10-0462-AD-9: SURFACE MOUNTED PAPER TOWEL DISPENSER & WASTE BIN 7.6L - TRADITIONAL COLLECTION
Toilet Paper Dispenser	Livi – Twin Toilet Roll Dispenser Side by Side (5502)
Mirror	JD McDonald - Tempered Glass Mirror - Model No 10-0600-V1839 (460 x 990mm overall)
Shower Set	Caroma – Virtu Plus Starsafe II Inverted T Right hand Accessible Shower Set
Shower Seat	Caroma – Skandic Shower Mixer with Diverter
Shower Rail	Caroma – Virtu Comfort Shower Seat – 960 x 400mm RBA 4177-120 curtain rail and curtain
FIXTURE + FITTINGS STAFF AMBULANT AMENITIES	
WC	Ambulant toilet with closed couple cistern Liano Cleanflush easy height wall faced toilet suite Liano Care single flap seat. To be installed on silicon with a silicon joint installed around the pan and cisten and between the pan and cisten connection. Installation to be compliant with AS1428
Grabrails	Caroma Virtu Comfort L&R Ambulant Grabrails

MISCELLANEOUS ITEMS

ELECTRONIC	
DOOR	
OPENER	BIOMETRIC ACCESS CONTROL FOR MAIN ENTRY GATE
Manufacturer	Argus Global
Model	Biometric access control using finger vein technology
Product	MPH-MFV-BIG (IP65 finger vein access device), MPH-MSO-x10 (finger vein desktop enrolment unit), MPH-SW-MGR (software), ARG-PS-ENG (professional Services)
Number	
WINDOW	
COVERINGS WINDOW ROLLER BLINDS	
Manufacturer	Riverland
Colour	TBC BY CLIENT
STORAGE	
SHELVING LONGSPAN STORAGE SYSTEM	
Manufacturer	Dexion or Equal Freestanding Single and Double Sided
Dimensions	455mm x 2200 H – Custom lengths to suit spaces
Notes	Provide 18mm MDF shelves Supports in accordance with manufacturers detail
TACTILE GROUND SURFACE INDICATORS	
Manufacturer	Tactile Systems Australia
Description	300 x 300 x 40mm Concrete Tactile Paver
Finish	Yellow
Fixing	Recessed in concrete. Finished height in accordance with AS1428
Note	Tactile Ground Surface Indicators to achieve 30% luminance contrast to surrounding surfaces. Provide written evidence of luminance contrast prior to ordering product Slip resistance to be 'Class V'
SECURITY SCREENS TO ALL WINDOWS – TANDARA + WATTLE GLEN	
Description	Woven Mesh Security Screens
Finish	Black
Fixing	Vandal resistance screws and fixings
BOLLARDS	
Description	Bollards to DDA Carpark
Notes	Type and specification to be provide by Council

No.	Revision - Revise on CAD do not amend by hand	Checked	Approved	Date	M/F/In
D	Issue for Tender	JOS		30/11/18	-
C	Issue to Consultants + Client for Review	JOS		28/09/18	-
B	Issue for Review	JOS		17/09/18	-
A	Preliminary Issue for Review	JOS		07/08/18	-

Scale 0 1 2 1:50

A1 UNREDUCED 1:50 AT A1 1:100 AT A3

PRELIMINARY ISSUE FOR REVIEW

Copyright
This document is & shall remain the property of Complete Urban Pty. Ltd.
The document may only be used for the purpose for which it was commissioned & in accordance with the terms of engagement for the commission. Unauthorised use of this document in any way is prohibited.



10 Regent Street
Chippendale NSW 2008
p 02 9282 9900
f 02 9282 9277



Drawn	Designed
Drafting Check	Design Check
Approved	

Penrith City Council
Documentation for Tandara Childcare Centres

GENERAL FIXTURES AND FITTINGS SCHEDULE

Drg. NO. 2826- GE - 006

Size A1 Rev D

DOOR SCHEDULES – TANDARA

Table containing door schedules DR: 01, DR: 02 + 03, DR: 04 + 05, DR: 06 + 07, and + 08 + 10 + 16. Each entry lists door type, thickness, finish, frame type, leaf size, hardware, and signage details.

DR: 09 + 14 + 15

Table containing door schedules DR: 09 + 14 + 15, DR: 11, and DR: 12 + 13. Each entry lists door type, thickness, finish, frame type, leaf size, hardware, and signage details.

GATE SCHEDULES – TANDARA

Table containing gate schedule GO:01, listing material, description, colour, fixing, and size for a double gate services enclosure.

WINDOW SCHEDULES – TANDARA

Table containing window schedules WD:01, WD:02, WD:03, WD:04, and SD:01. Each entry lists window type, description, frame colour, and notes.

A, B, C, D, E, F, G, H

Revision table with columns: No., Revision, Checked, Approved, Date, M/F/In, Status. Includes entries for Issue for Tender, Issue to Consultants + Client for Review, Issue for Review, and Preliminary Issue for Review.

Scale bar showing 0, 1, 2 units. Text: Scale 1:50. A1 UNREDUCED. 1:50 AT A1, 1:100 AT A3. PRELIMINARY ISSUE FOR REVIEW.

Copyright notice: "This document is & shall remain the property of Complete Urban Pty. Ltd. The document may only be used for the purposes for which it was commissioned & in accordance with the terms of engagement for the commission. Unauthorised use of this document in any way is prohibited."



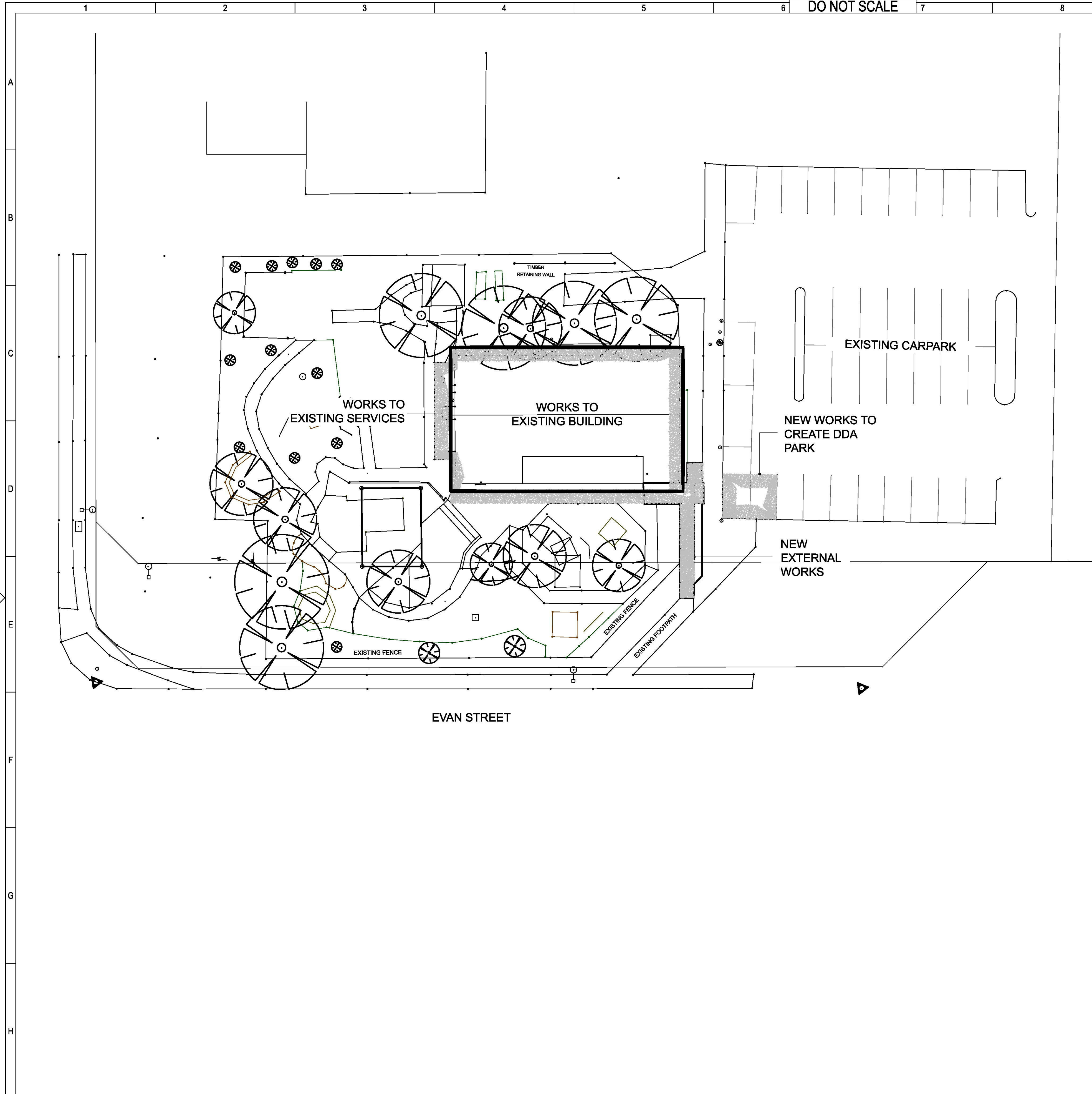
10 Regent Street Chippendale NSW 2008 | p 02 9282 9900 f 02 9282 9277



Table with columns: Drawn, Designed, Drafting Check, Design Check, Approved.

Client and Job information: Penrith City Council, Documentation for Tandara Childcare Centres. Title: DOOR AND WINDOWS SCHEDULE - TANDARA. Drg. NO. 2826- GE - 007. Size A1, Rev D.

DO NOT SCALE



LOCALITY PLAN
TANDARA CHILDREN'S CENTRE
217 EVAN STREET, SOUTH PENRITH

MAP COURTESY OF SIXMAPS
Not to scale

D	Issue for Tender	JOS	30/11/18	-
C	Issue to Consultants + Client for Review	JOS	28/09/18	-
B	Issue for Review	JOS	17/09/18	-
A	Preliminary Issue for Review	JOS	07/08/18	-
No.	Revision - Revise on CAD do not amend by hand	Checked	Approved	Date

Scale 0 1 2 1:50

A1 UNREDUCED
1:50 AT A1
1:100 AT A3

PRELIMINARY ISSUE FOR REVIEW

Copyright
*This document is & shall remain the property of Complete Urban Pty. Ltd.
The document may only be used for the purposes for which it was commissioned & in accordance with the terms of engagement for the commission.
Unauthorized use of this document in any way is prohibited.



10 Regent Street
Chippendale NSW 2008
p 02 9282 9900
f 02 9282 9277

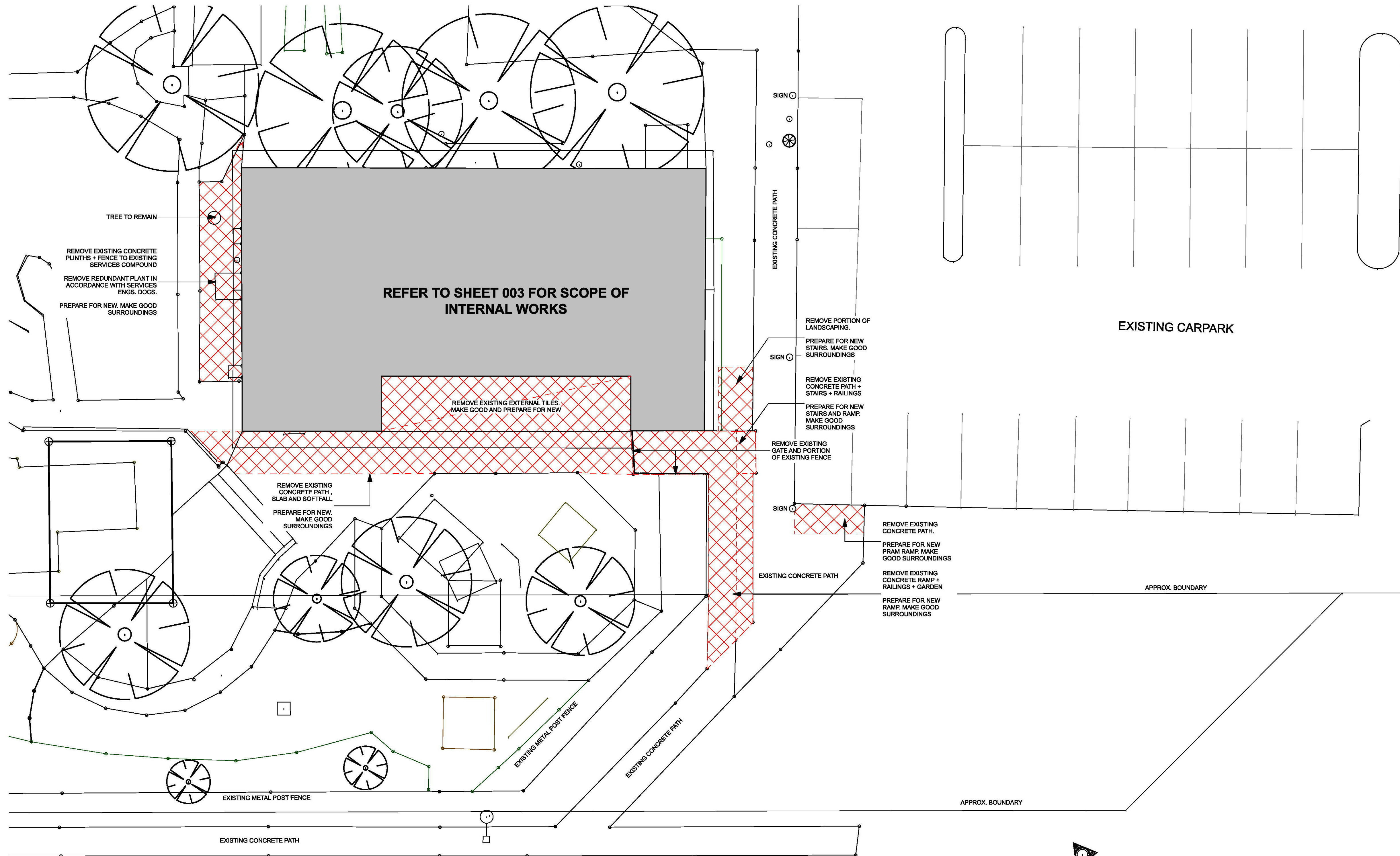
COMPLETE

ABN 64 100 037 812
www.completeurban.com.au

Drawn	Designed
Drafting Check	Design Check
Approved	

Penrith City Council	
Documentation for Wattle Glen & Tandara Childcare Centres	
Title TANDARA - SITE PLAN + SCOPE OF WORKS	
Drg. NO.	2826- TAN - 001
Size	A1
Rev	D

This Drawing must not be used for Construction unless signed as Approved



A
B
C
D
E
F
G
H

1 2 3 4 5 6 7 8 9 10 11 12

D	Issue for Tender	JOS	30/11/18	-
C	Issue to Consultants + Client for Review	JOS	28/09/18	-
B	Issue for Review	JOS	17/09/18	-
A	Preliminary Issue for Review	JOS	07/08/18	-
No.	Revision - Revise on CAD do not amend by hand	Checked	Approved	Date

Scale 0 1 2 1:50

A1 UNREDUCED
1:50 AT A1
1:100 AT A3

PRELIMINARY ISSUE FOR REVIEW

Copyright
*This document is & shall remain the property of Complete Urban Pty. Ltd.
The document may only be used for the purpose for which it was commissioned & in accordance with the terms of engagement for the commission.
Unauthorized use of this document in any way is prohibited.

PENRITH CITY COUNCIL

10 Regent Street
Chippendale NSW 2008
p 02 9282 9900
f 02 9282 9277

COMPLETE

ABN 64 100 037 812
www.completeurban.com.au

Drawn	Designed
Drafting Check	Design Check
Approved	

Client and Job: Penrith City Council
Documentation for: Tandara Childcare Centres

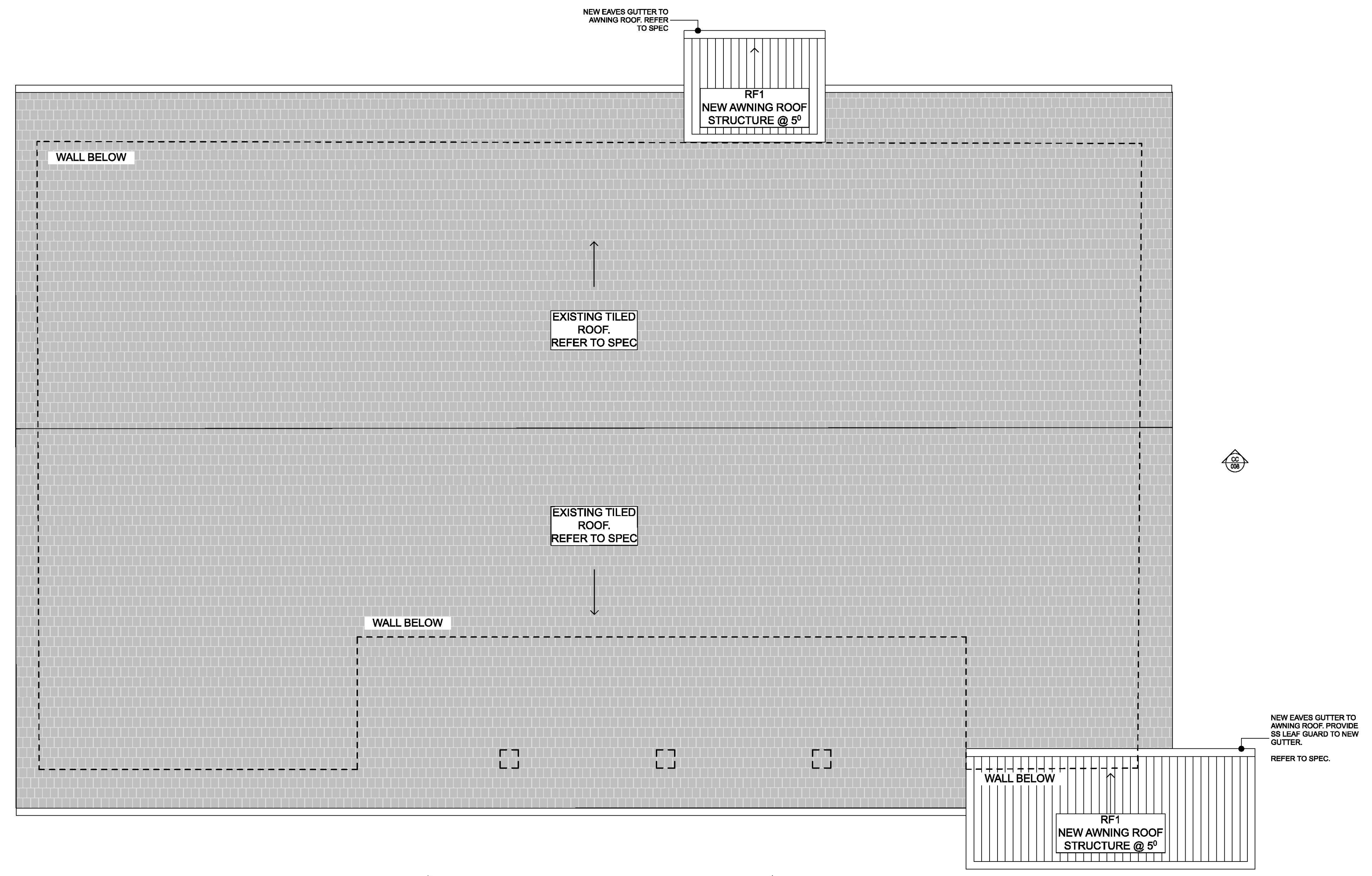
Title: TANDARA - EXTERNAL WORKS DEMOLITION

Drg. No. 2826- TAN - 002

Size: A1
Rev: D

DO NOT SCALE

- General Notes**
- Repoint and Paint existing Tiled roof.
 - Renew, Repair and Paint existing Gutters / Downpipes and Fascias. Refer to Schedule for finishes.
 - New Insulated Panel roof to Entry and external to Staff Room. Provide columns, flashings, gutter and downpipes in accordance with manufacturer's specifications. Refer to Schedule for finishes.
 - Provide Safety Access and roof anchor points in accordance with Australian and Council Specifications.



D	Issue for Tender	JOS	30/11/18	-
C	Issue to Consultants + Client for Review	JOS	28/09/18	-
B	Issue for Review	JOS	17/09/18	-
A	Preliminary Issue for Review	JOS	07/08/18	-
No.	Revision - Revise on CAD do not amend by hand	Checked	Approved	Date

Scale 0 1 2 1:50

A1 UNREDUCED 1:50 AT A1 1:100 AT A3

PRELIMINARY ISSUE FOR REVIEW

Copyright
 *This document is & shall remain the property of Complete Urban Pty. Ltd.
 The document may only be used for the purpose for which it was commissioned & in accordance with the terms of engagement for the commission. Unauthorised use of this document in any way is prohibited.



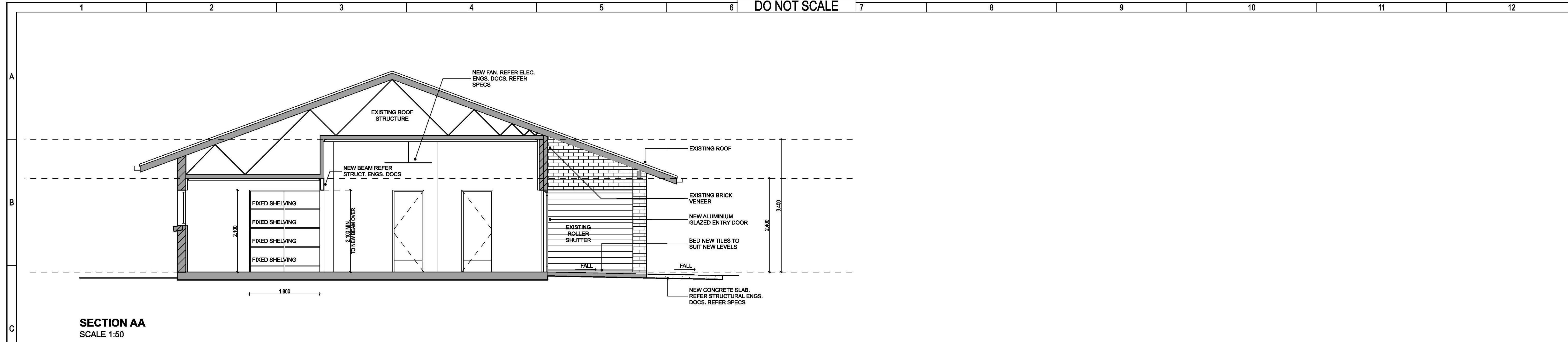
10 Regent Street
 Chippendale NSW 2008 | p 02 9282 9900 | f 02 9282 9277

COMPLETE

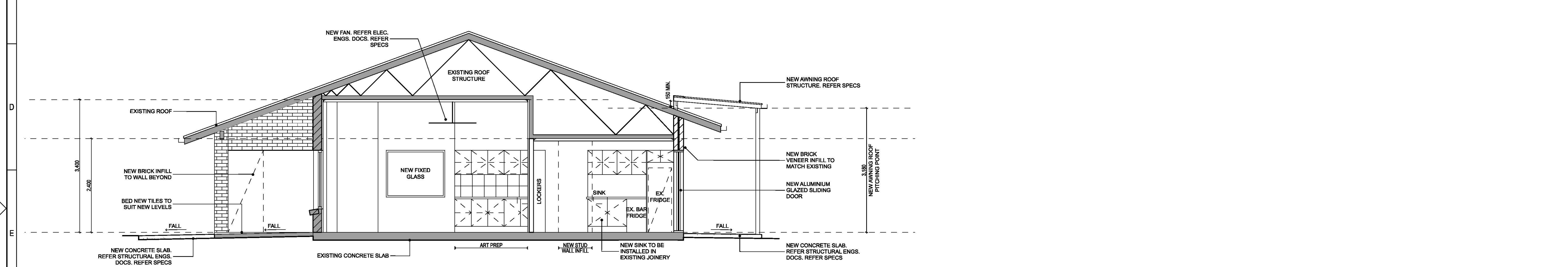
ABN 64 100 037 812
 www.completeurban.com.au

Drawn	Designed
Drafting Check	Design Check
Approved	

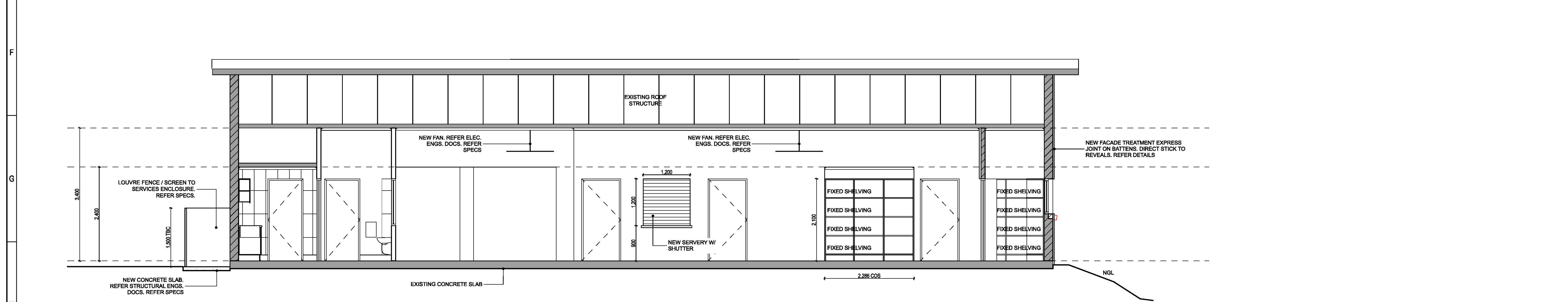
Client and Job		Penrith City Council Documentation for Tandara Childcare Centres	
Title		TANDARA - ROOF PLAN	
Dwg. NO.	2826- TAN - 007	Size	A1
Rev		Rev	D



SECTION AA
SCALE 1:50



SECTION BB
SCALE 1:50



SECTION CC
SCALE 1:50

D	Issue for Tender	JOS	30/11/18	-
C	Issue to Consultants + Client for Review	JOS	28/09/18	-
B	Issue for Review	JOS	17/09/18	-
A	Preliminary Issue for Review	JOS	07/08/18	-
No.	Revision - Revise on CAD do not amend by hand	Checked	Approved	Date

Scale 0 1 2 1:50

A1 UNREDUCED

1:50 AT A1
1:100 AT A3

PRELIMINARY ISSUE FOR REVIEW

Copyright
This document is & shall remain the property of Complete Urban Pty. Ltd.
The document may only be used for the purposes for which it was commissioned & in accordance with the terms of engagement for the commission.
Unauthorized use of this document in any way is prohibited.

PENRITH CITY COUNCIL

10 Regent Street
Chippendale NSW 2008
p 02 9282 9900
f 02 9282 9277

COMPLETE

ABN 64 100 037 812
www.completeurban.com.au

Drawn	Designed
Drafting Check	Design Check
Approved	

Client and Job: Penrith City Council
Documentation for: Tandara Childcare Centres

Title: TANDARA - INTERNAL ELEVATIONS - SECTIONS

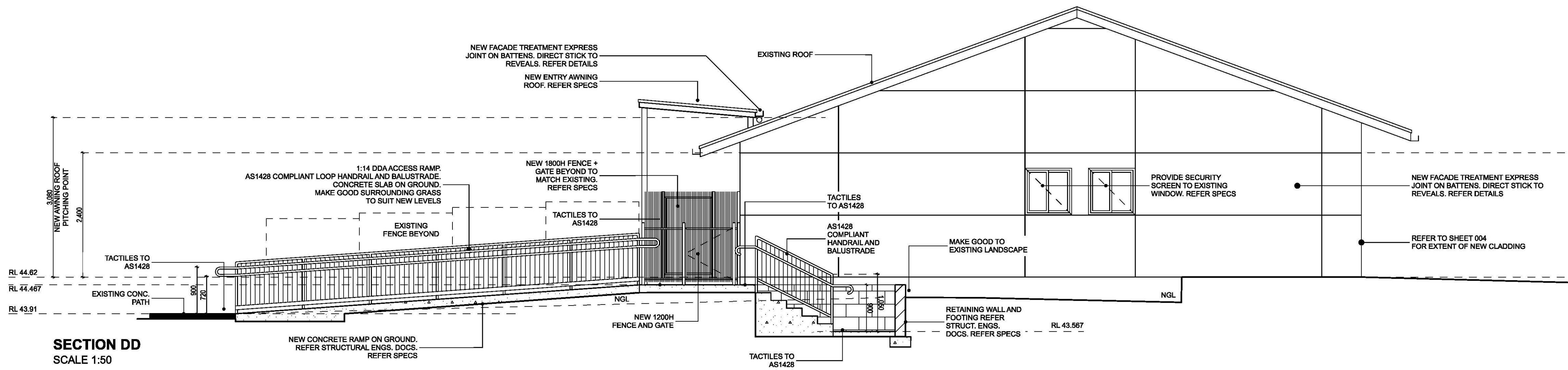
Drg. NO. 2826- TAN - 008

Size: A1
Rev: D

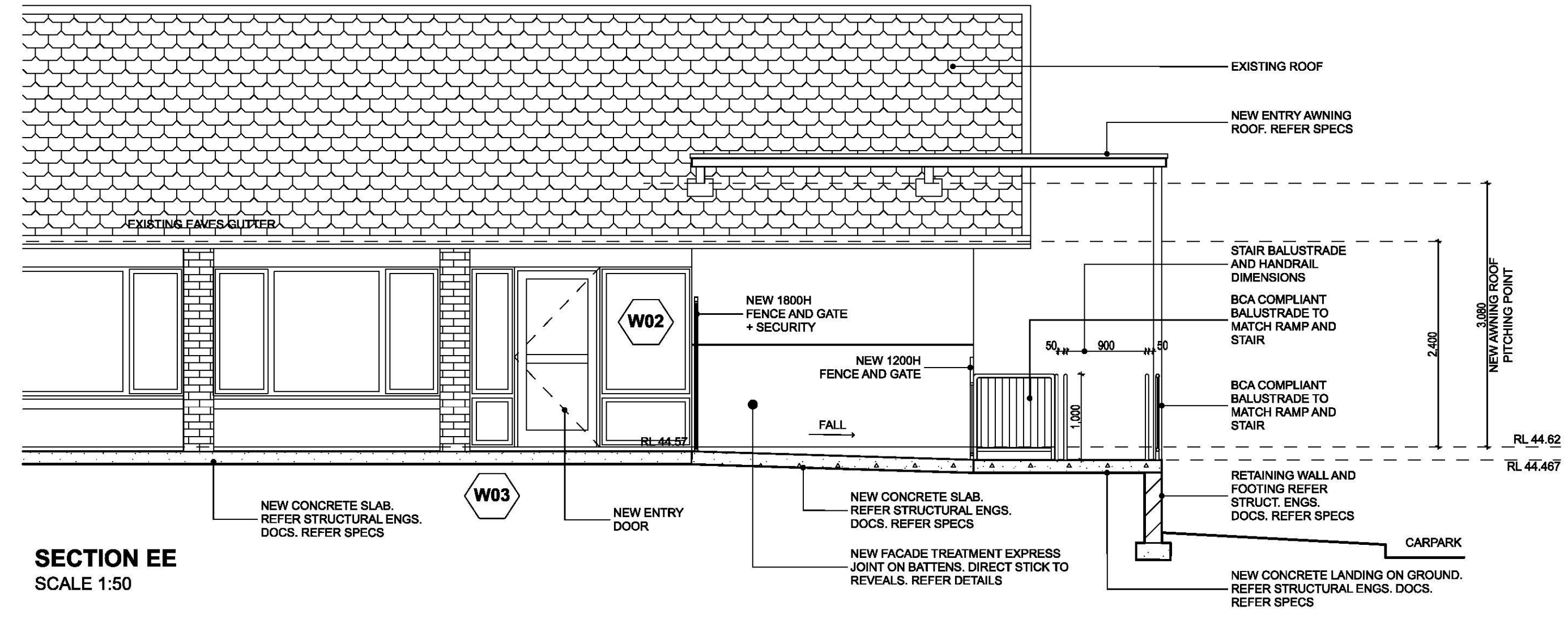
DO NOT SCALE

1 2 3 4 5 6 7 8 9 10 11 12

A
B
C
D
E
F
G
H



SECTION DD
SCALE 1:50



SECTION EE
SCALE 1:50

D	Issue for Tender	JOS	30/11/18	-
C	Issue to Consultants + Client for Review	JOS	28/09/18	-
B	Issue for Review	JOS	17/09/18	-
A	Preliminary Issue for Review	JOS	07/08/18	-
No.	Revision - Revise on CAD do not amend by hand	Checked	Approved	Date

Scale 0 1 2 1:50

1:50 AT A1
1:100 AT A3

A1 UNREDUCED

PRELIMINARY ISSUE FOR REVIEW

Copyright
*This document is & shall remain the property of Complete Urban Pty. Ltd.
The document may only be used for the purpose for which it was commissioned & in accordance with the terms of engagement for the commission.
Unauthorized use of this document in any way is prohibited.

PENRITH CITY COUNCIL

10 Regent Street
Chippendale NSW 2008
p 02 9282 9900
f 02 9282 9277

COMPLETE

ABN 64 100 037 812
www.completeurban.com.au

Drawn	Designed
Drafting Check	Design Check
Approved	

Client and Job
Penrith City Council
Documentation for Tandara Childcare Centres

Title
TANDARA - EXTERNAL ELEVATIONS - SECTIONS

Drg. NO. 2826- TAN - 009

Size A1
Rev D