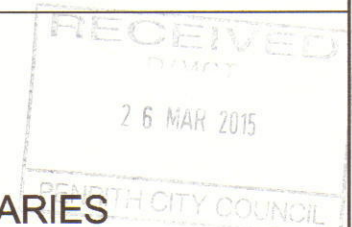


SURVEYING & SPATIAL INFORMATION REGULATION 2012 CLAUSE 61(2)					
M.G.A. CO ORDINATES (ZONE 56)					
MARK	EASTING	NORTHING	CLASS	ORDER	METHOD
PM20625	289 085.143	6 260 454.509	B	2	SCIMS
PM74681	288 745.511	6 260 519.724	B	2	
SSM75580	288 558.448	6 260 559.307	B	2	
SSM75581	288 613.636	6 260 690.591	B	2	
SSM75582	288 733.058	6 260 723.222	B	2	
SSM75583	288 791.197	6 260 802.258	B	2	
SSM180928	XXXXXX	XXXXXX	C	NA	CADASTRAL TRAVERSE
SSM180932	XXXXXX	XXXXXX	C	NA	
SSM180934	XXXXXX	XXXXXX	C	NA	
SSM191507	XXXXXX	XXXXXX	C	NA	
SSM191508	XXXXXX	XXXXXX	C	NA	
SSM191509	XXXXXX	XXXXXX	C	NA	
SSM191510	XXXXXX	XXXXXX	C	NA	
SSM191511	XXXXXX	XXXXXX	C	NA	
SSM191512	XXXXXX	XXXXXX	C	NA	
SSM191517	XXXXXX	XXXXXX	C	NA	

COMBINED SEA LEVEL AND SCALE FACTOR 1.000135
 SOURCE M.G.A. CO ORDINATES ADOPTED FOR ESTABLISHED MARKS FROM S.C.I.M.S. MARCH, 2015.



SCHEDULE of LINES

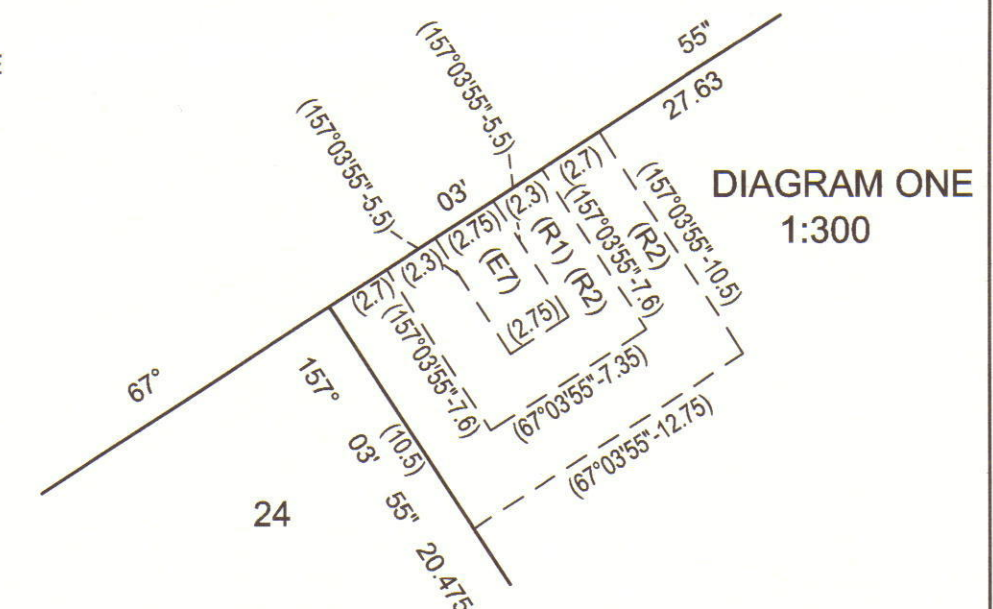
No	Bearing	Distance
23	89°28'05"	5.835
24	157°19'40"	1.83
25	198°23'20"	7.035
26	327°10'40"	6.44
27	146°28'05"	2.83
28	18°23'15"	7.035
29	56°28'05"	2.83

SCHEDULE of CURVED BOUNDARIES

No	Bearing	Chord	Arc	Radius
1	64°23'25"	27.725	27.83	91
2	73°29'50"	1.1	1.1	91
3	70°36'35"	12.36	12.365	109
4	61°58'50"	20.435	20.465	109
5	52°20'20"	16.2	16.215	109
6	136°49'30"	15.84	15.86	92.2
7	149°32'25"	24.985	25.06	92.2
8	202°11'50"	11.57	12.845	8.2
9	241°05'15"	14.125	14.15	67.8
10	228°15'50"	16.16	16.2	67.8
11	215°13'35"	14.625	14.655	67.8
12	203°42'40"	12.58	12.6	67.8
13	199°23'35"	0.43	0.43	12.2
14	217°49'40"	7.31	7.425	12.2
15	204°23'15"	13.135	13.795	12.8
16	32°04'20"	19.77	22.59	12.8
17	343°36'05"	0.885	0.885	12.2
18	16°33'25"	0.78	0.78	12.2
19	26°48'25"	15.285	15.34	52.2
20	51°08'45"	28.635	29.01	52.2
21	353°43'25"	3.41	3.425	12.2
22	8°14'40"	2.755	2.76	12.2
30	(47°18'05")	(16.095)	(16.42)	(23.8)
31	128°04'15"	18.24	20.305	12.8

46
 PUBLIC RESERVE
 "HILL TOP PARK"
 FILE COPY

- (E1) EASEMENT TO DRAIN WATER 1.5 WIDE
- (E2) EASEMENT TO DRAIN WATER 2 WIDE
- (E3) EASEMENT TO DRAIN WATER 3.25 WIDE AND VARIABLE
- (E4) RIGHT OF ACCESS 2.75 WIDE AND VARIABLE
- (E5) RIGHT OF ACCESS 3.25 WIDE AND VARIABLE
- (E6) EASEMENT FOR UNDERGROUND CABLES 1 WIDE
- (E7) EASEMENT FOR PADMOUNT SUBSTATION 2.75 WIDE
- (R1) RESTRICTION ON THE USE OF LAND
- (R2) RESTRICTION ON THE USE OF LAND
- 'a'-b'-c' SEE RESTRICTION NUMBERED FOURTEEN



Surveyor: Ian Vincent Myers
 Vince Morgan Surveyors
 Ph.47215293. email: imyers@vmsurvey.com.au
 Date of Survey: 20th March, 2015.
 Surveyor's Reference:18450C

PLAN OF SUBDIVISION OF
 LOT 21 D.P.1151724

LGA: PENRITH
 Locality: KINGSWOOD
 Subdivision No.:
 Lengths are in metres. Reduction Ratio 1:750

Registered:
D.P.1194171

SCHEDULE of CURVED BOUNDARIES

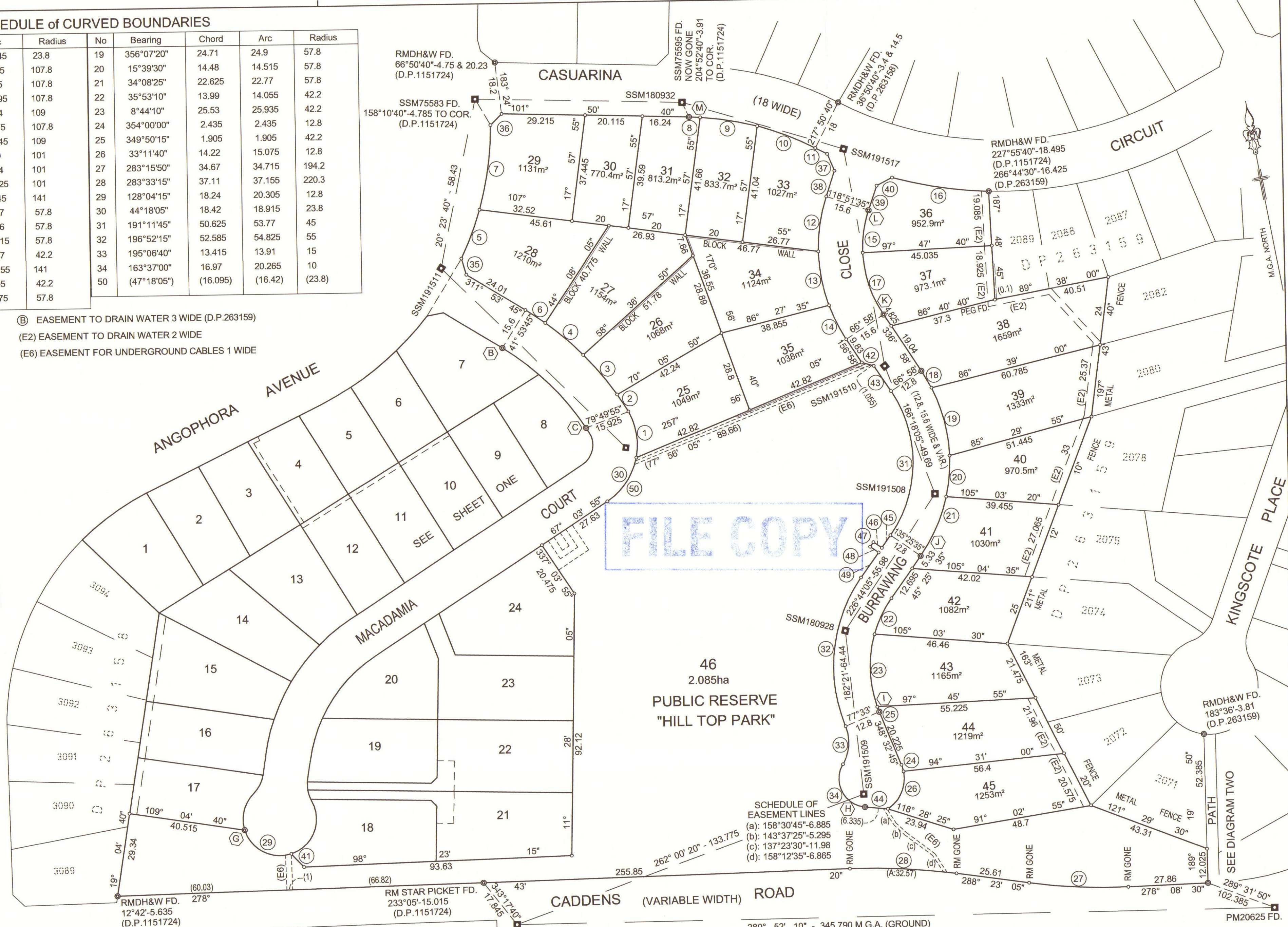
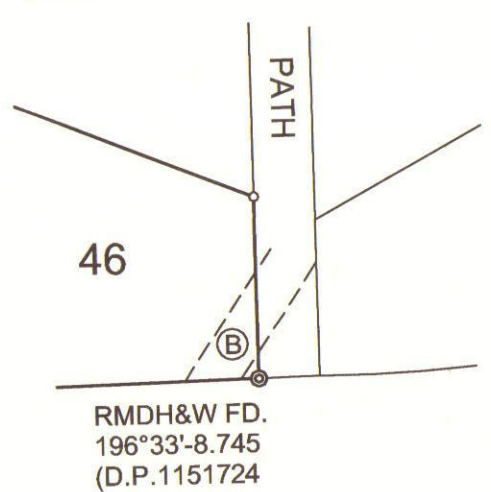
No	Bearing	Chord	Arc	Radius	No	Bearing	Chord	Arc	Radius
1	1°22'55"	16.4	16.745	23.8	19	356°07'20"	24.71	24.9	57.8
2	337°15'10"	7.175	7.175	107.8	20	15°39'30"	14.48	14.515	57.8
3	330°28'15"	18.325	18.35	107.8	21	34°08'25"	22.625	22.77	57.8
4	320°56'40"	17.475	17.495	107.8	22	35°53'10"	13.99	14.055	42.2
5	30°53'30"	18.34	18.34	109	23	8°44'10"	25.53	25.935	42.2
6	314°05'45"	8.275	8.275	107.8	24	354°00'00"	2.435	2.435	12.8
7	18°09'40"	29.95	30.045	109	25	349°50'15"	1.905	1.905	42.2
8	102°56'55"	3.89	3.89	101	26	33°11'40"	14.22	15.075	12.8
9	109°44'10"	20.01	20.04	101	27	283°15'50"	34.67	34.715	194.2
10	121°38'45"	21.88	21.925	101	28	283°33'15"	37.11	37.155	220.3
11	126°53'40"	4.645	4.645	141	29	128°04'15"	18.24	20.305	12.8
12	199°09'35"	19.48	19.57	57.8	30	44°18'05"	18.42	18.915	23.8
13	179°51'45"	19.27	19.36	57.8	31	191°11'45"	50.625	53.77	45
14	163°37'00"	13.385	13.415	57.8	32	196°52'15"	52.585	54.825	55
15	18°33'45"	15.085	15.17	42.2	33	195°06'40"	13.415	13.91	15
16	109°10'45"	34.17	34.255	141	34	163°37'00"	16.97	20.265	10
17	352°36'55"	22.765	23.05	42.2	50	(47°18'05")	(16.095)	(16.42)	(23.8)
18	340°22'25"	6.87	6.875	57.8					

(B) EASEMENT TO DRAIN WATER 3 WIDE (D.P.263159)
 (E2) EASEMENT TO DRAIN WATER 2 WIDE
 (E6) EASEMENT FOR UNDERGROUND CABLES 1 WIDE

SCHEDULE of LINES

No	Bearing	Distance
35	354°18'50"	5.83
36	55°32'25"	5.525
37	166°45'50"	6.43
38	208°51'35"	9.56
39	28°51'35"	9.06
40	72°46'45"	6.04
41	147°10'40"	6.44
42	116°09'50"	4.285
43	156°58'00"	10.79
44	105°33'25"	7.99
45	225°25'35"	5.33
46	315°25'35"	3.5
47	225°25'35"	2
48	135°25'35"	3.5
49	225°25'35"	10.695

DIAGRAM TWO
1:500



FILE COPY

SCHEDULE OF EASEMENT LINES
 (a): 158°30'45"-6.885
 (b): 143°37'25"-5.295
 (c): 137°23'30"-11.98
 (d): 158°12'35"-6.865

Surveyor: Ian Vincent Myers
 Vince Morgan Surveyors
 Ph. 47215293. email: imyers@vmsurvey.com.au
 Date of Survey: 20th March, 2015.
 Surveyor's Reference: 18450C

PLAN OF SUBDIVISION OF
 LOT 21 D.P.1151724

LGA: PENRITH
 Locality: KINGSWOOD
 Subdivision No.:
 Lengths are in metres. Reduction Ratio 1:900

Registered:

D.P.1194171

10 20 30 40 50 60 70 80 90 100 110 120 130 140