

Source: <http://maps.six.nsw.gov.au>



STATEMENT OF ENVIRONMENTAL EFFECTS
94-100 Explorers Way, St Clair

FIGURE 1
Location

Prepared For - Opal Aged Care





Source: <http://maps.six.nsw.gov.au>

STATEMENT OF ENVIRONMENTAL EFFECTS
94-100 Explorers Way, St Clair

FIGURE 2
Site

Prepared For - Opal Aged Care





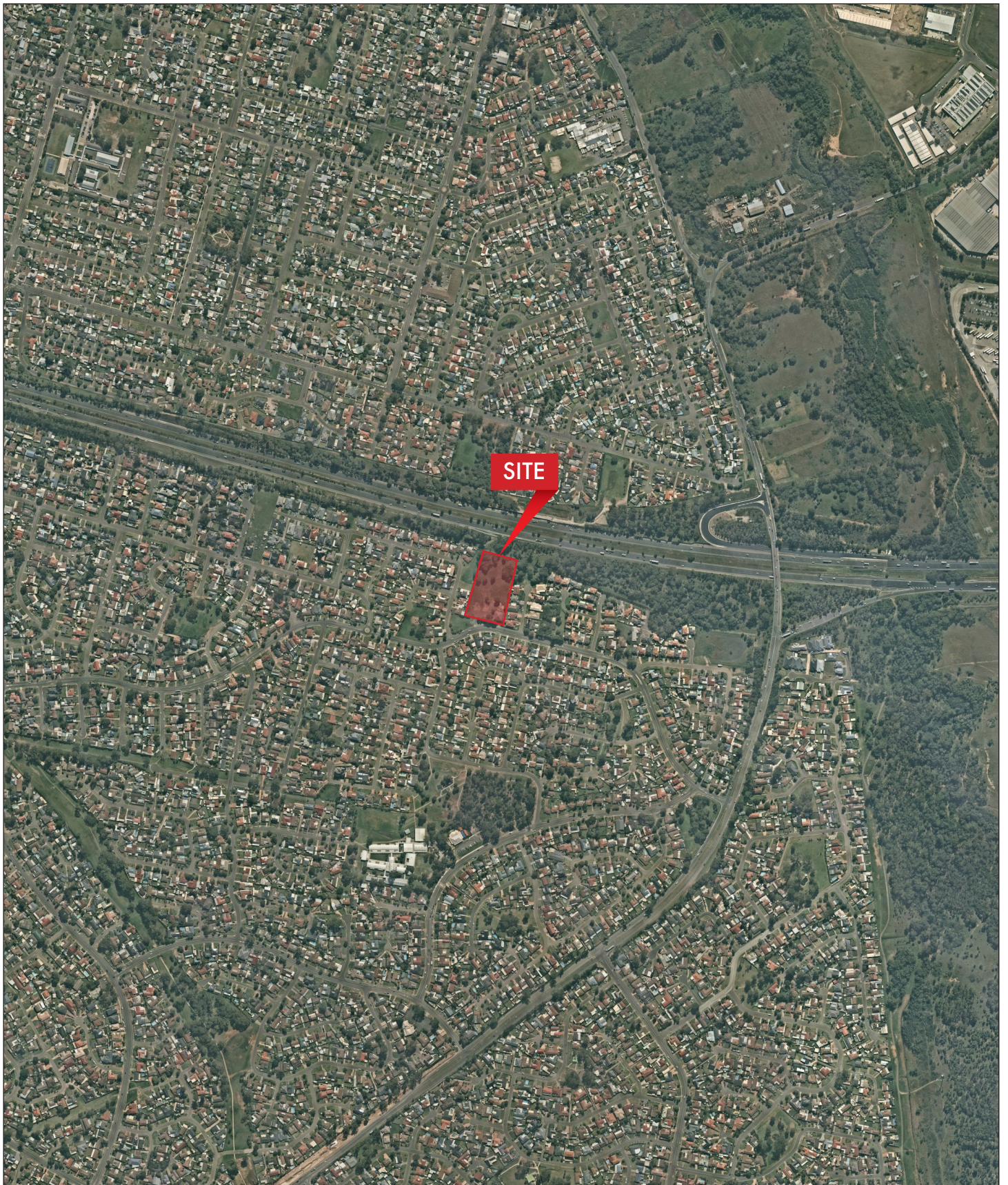
Source: NearMap 7 April 2019

STATEMENT OF ENVIRONMENTAL EFFECTS
94-100 Explorers Way, St Clair

FIGURE 3A
Aerial Photo - Detail

Prepared For - Opal Aged Care





Source: NearMap 7 April 2019

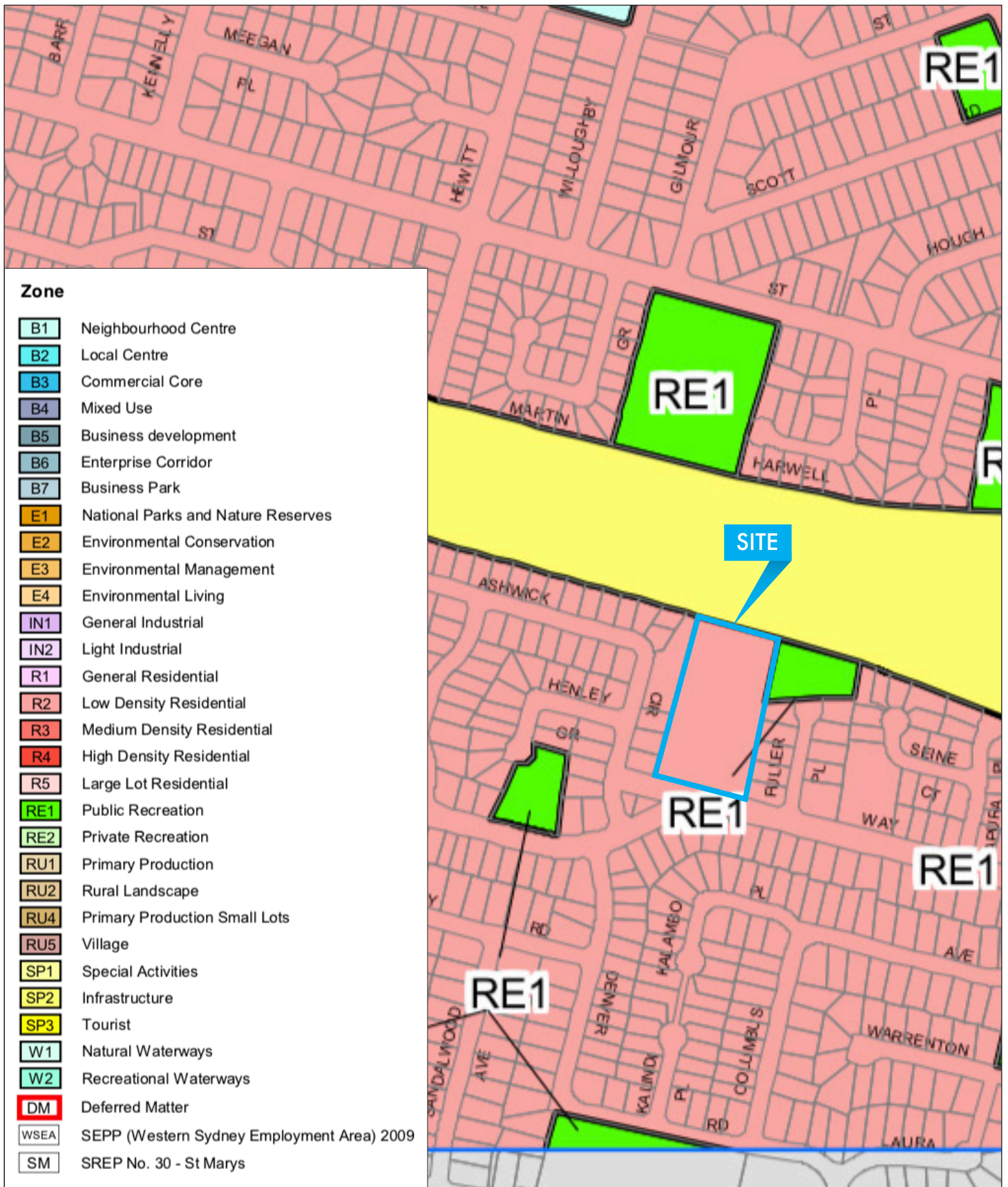
STATEMENT OF ENVIRONMENTAL EFFECTS
94-100 Explorers Way, St Clair

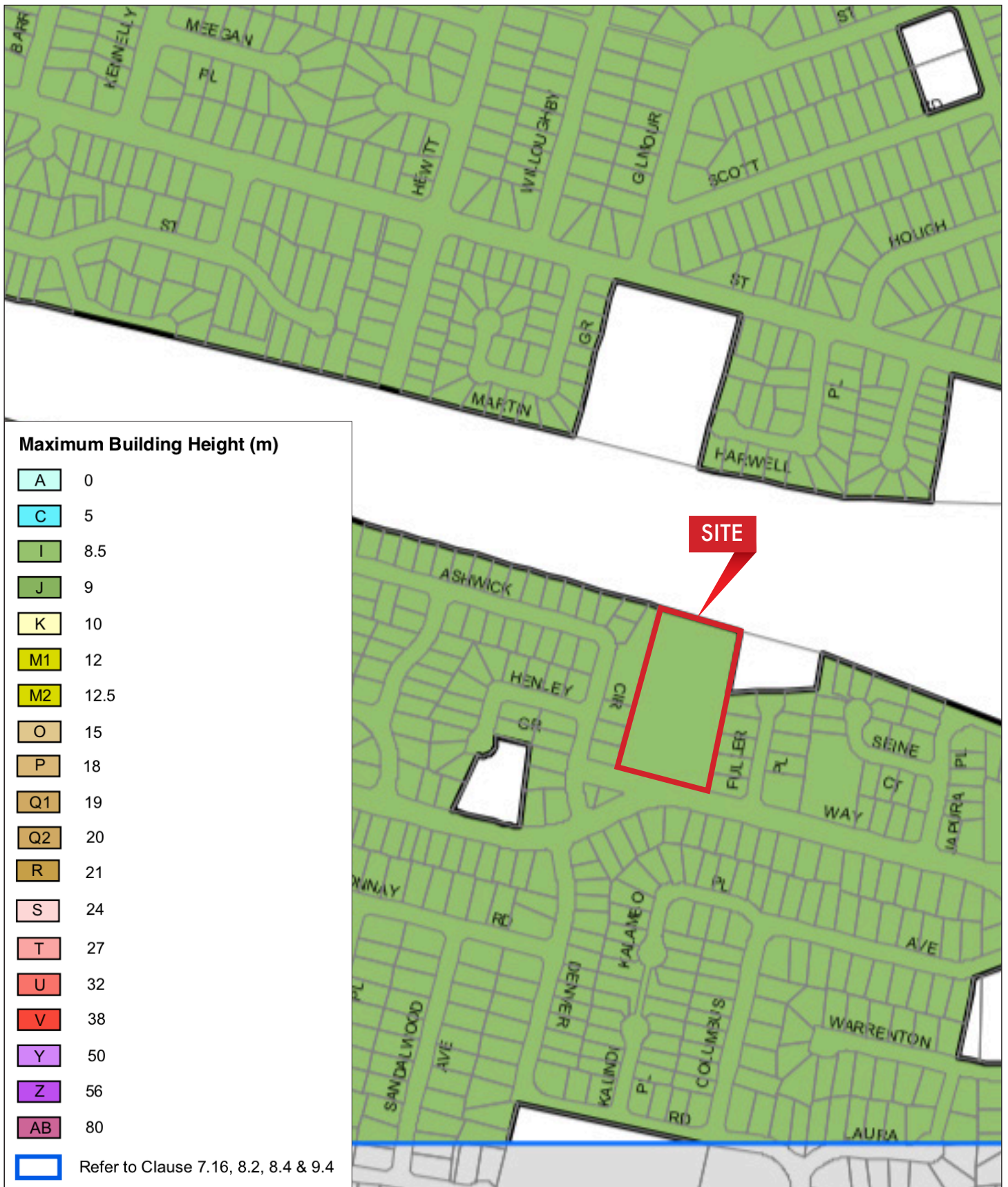
FIGURE 3B
Aerial Photo - Wider Area

Prepared For - Opal Aged Care



CONSULTING PLANNERS



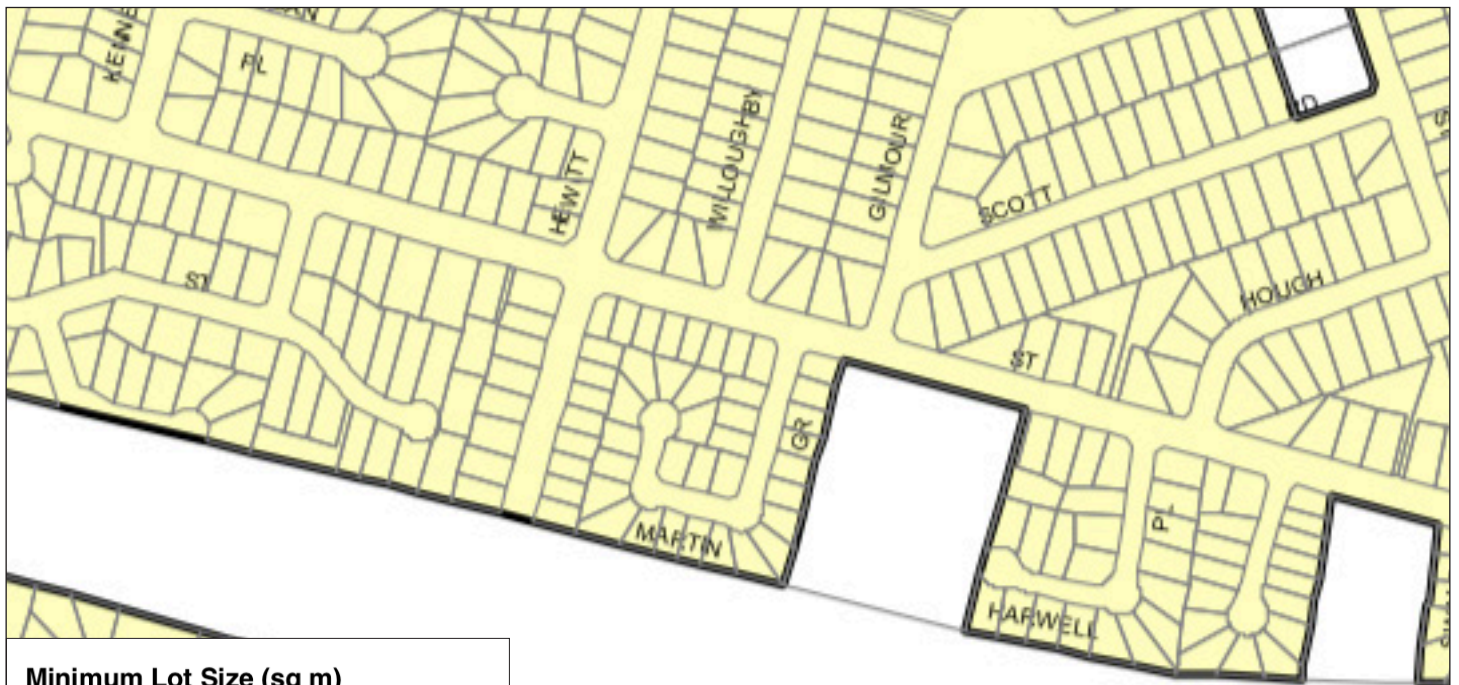


STATEMENT OF ENVIRONMENTAL EFFECTS
94-100 Explorers Way, St Clair


FIGURE 4B
Height of Buildings Map - Penrith LEP 2010

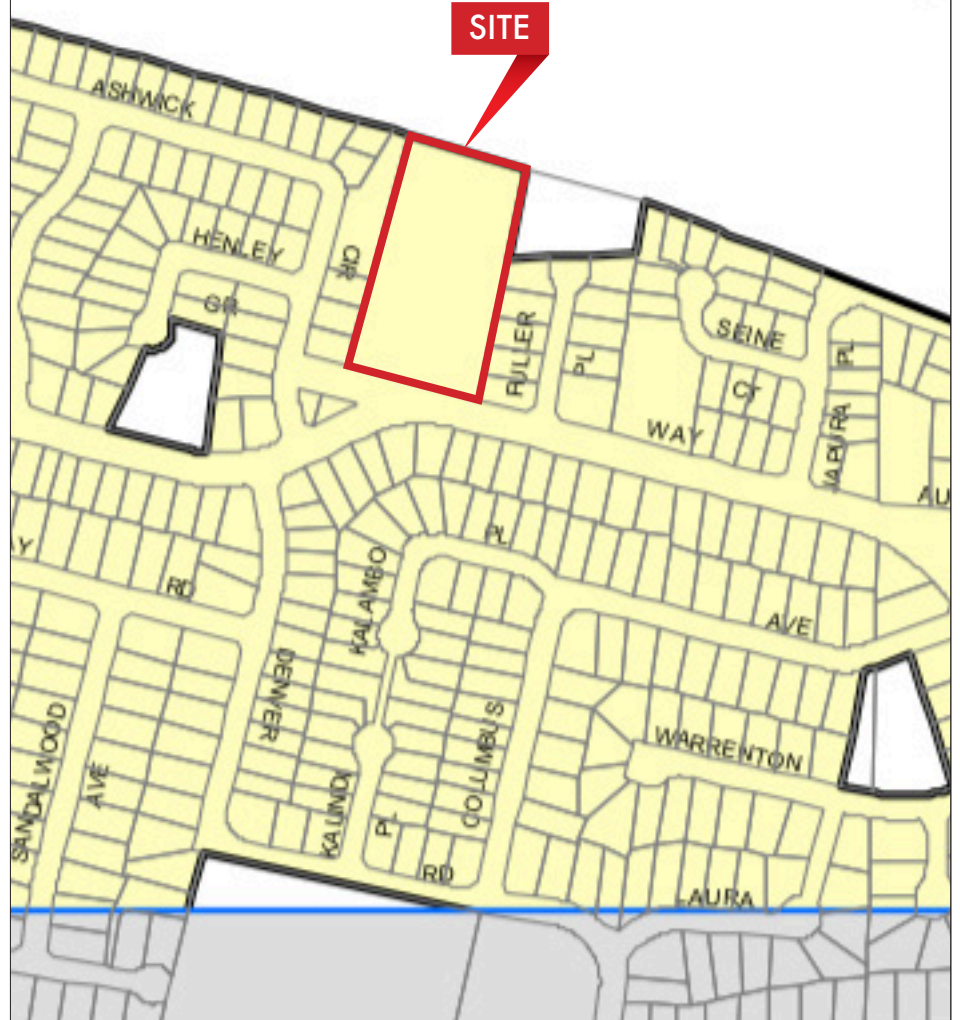
Prepared For - Opal Aged Care





Minimum Lot Size (sq m)

F	400
G	450
K1	550
K2	560
M	600
R	750
S	800
U1	1000
U2	1200
V	2000
W	4000
X	6000
Y1	10000 (1 ha)
Y2	12500 (1.25 ha)
Z	20000 (2 ha)
AB1	100000 (10 ha)
AB2	200000 (20 ha)
AB3	400000 (40 ha)
AI	1000000 (1000 ha+)
	Refer to Clause 7.16, 7.19 & 7.21



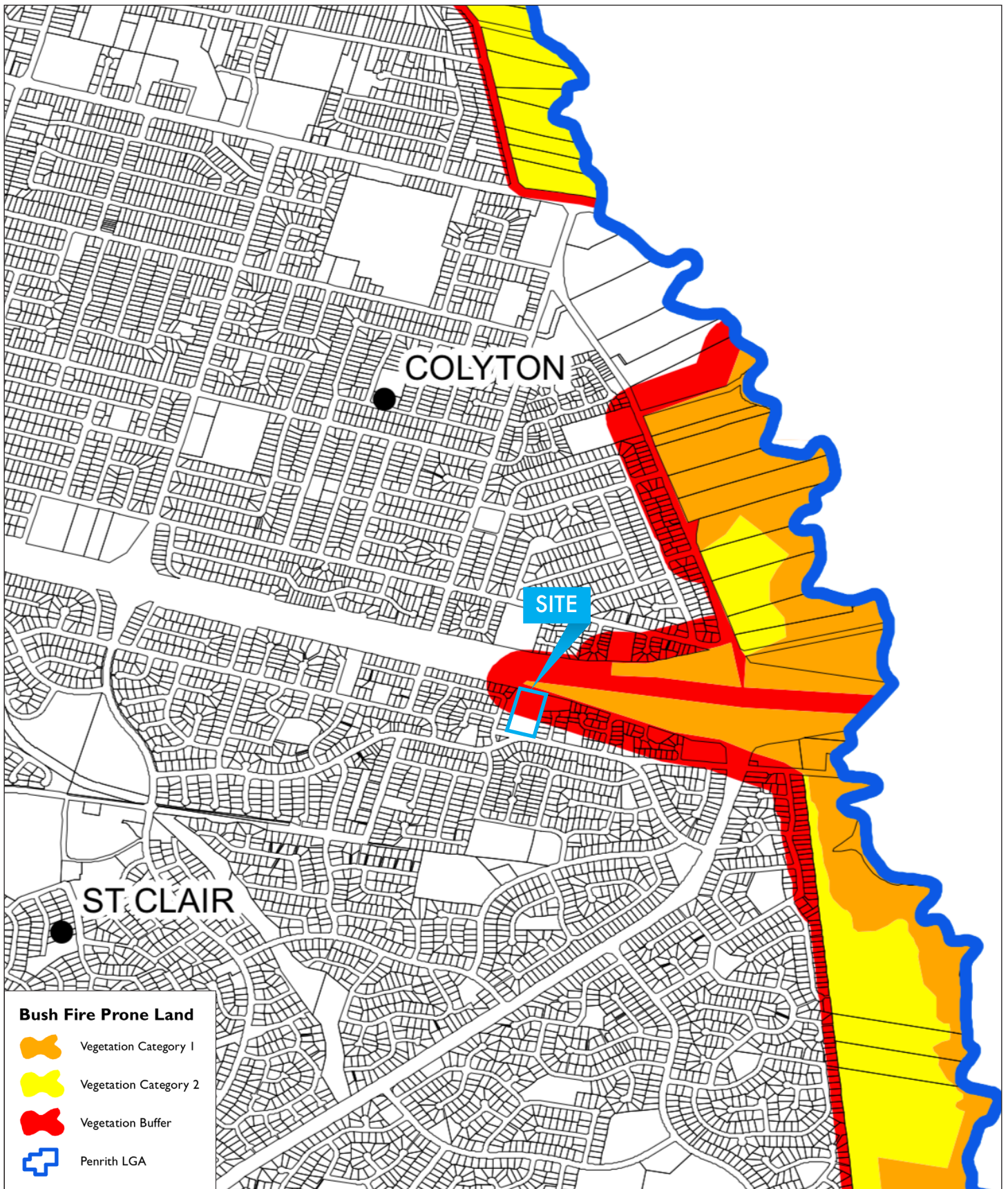
STATEMENT OF ENVIRONMENTAL EFFECTS

94-100 Explorers Way, St Clair

FIGURE 4C

Lot Size Map - Penrith LEP 2010

Prepared For - Opal Aged Care



STATEMENT OF ENVIRONMENTAL EFFECTS
 94-100 Explorers Way, St Clair

FIGURE 5
 Bushfire Prone Land Map - NSW Rural Fire Service

Prepared For - Opal Aged Care

