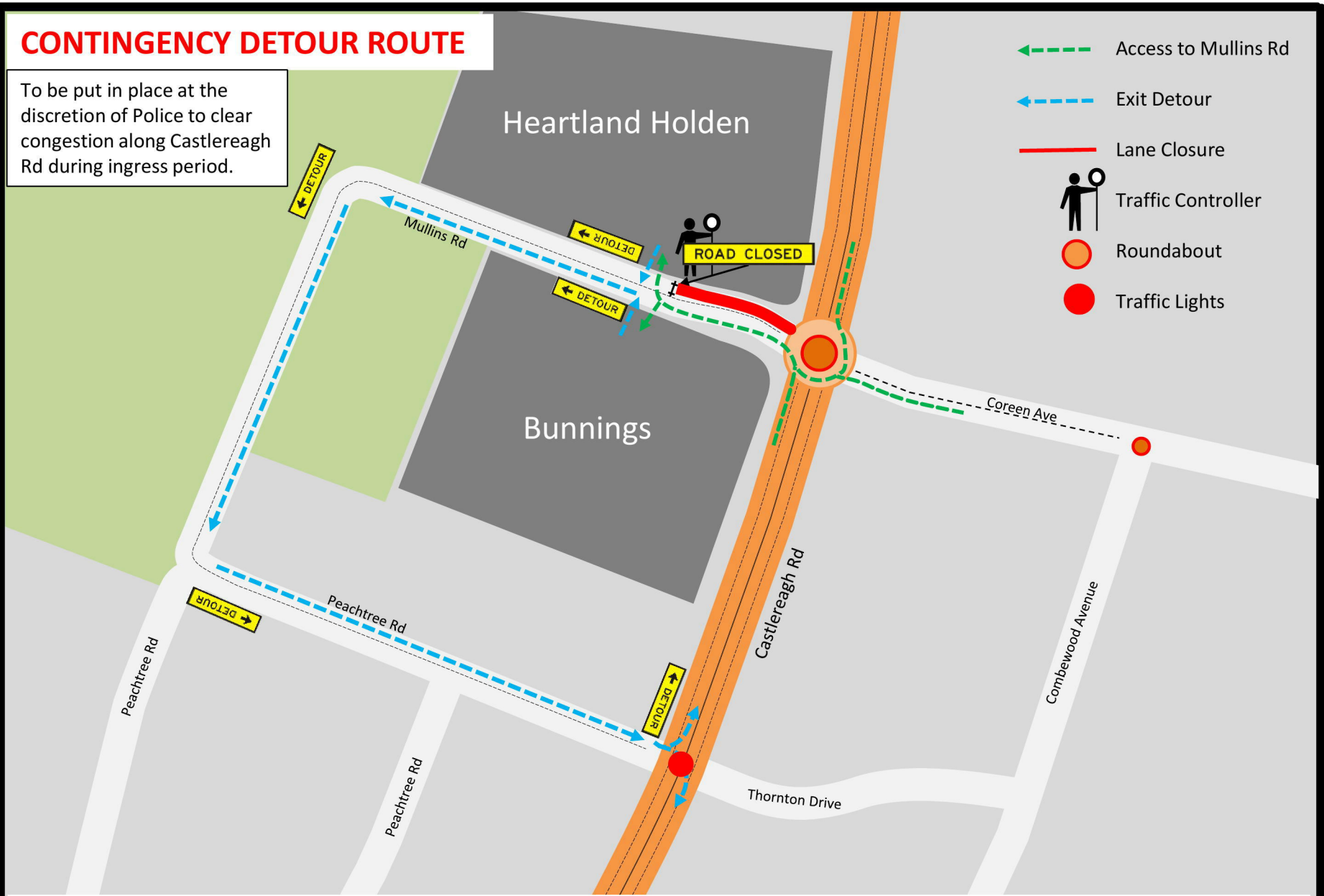


CONTINGENCY DETOUR ROUTE

To be put in place at the discretion of Police to clear congestion along Castlereagh Rd during ingress period.

- ← Access to Mullins Rd
- ← Exit Detour
- Lane Closure
- 🚶 Traffic Controller
- ⦿ Roundabout
- Traffic Lights



Contingency Exit Detour Route – Saturday 17 September 2016 from 10am – 2pm