

Nepean Creative and Performing Arts High School

Development Application - New Multi-Purpose Hall



 Site Boundary

 Proposed development - Refer to A001 for Site Plan

Drawing List - DA	
Drawing Number	Drawing Name
DA000	Cover Page
DA010	Site Analysis Plan
DA011	Site Plan
DA020	Building Site plan
DA030	Demolition Plan
DA040	Wall Types
DA100	Ground Floor Plan
DA101	Roof Plan
DA200	Elevations Sheet 01
DA201	Elevations Sheet 02
DA300	Sections Sheet 01
DA301	Sections Sheet 02
DA450	Details Wall Sections
DA700	External Colours Scheme
DA800	Shadow Diagrams
DA900	3D Perspective

General Notes

DO NOT SCALE FROM DRAWING. USE FIGURED DIMENSIONS ONLY. CHECK ALL DIMENSIONS ON SITE BEFORE ANY MANUFACTURE OR CONSTRUCTION

All dimensions are in millimetres unless stated otherwise.

All architectural drawings are to be read in conjunction with the relevant consultant documents. All dimensions and levels are to be checked and verified on site prior to the commencement of work, shop drawings or fabrication of any components. Refer all discrepancies to the Architect for determination. Drawings are not to be scaled, use only figured dimensions. This drawing is copyright and must not be retained, copied or used without the permission of BKA Architecture. This document has been prepared for and on behalf of the clients noted on the drawing. BKA Architecture's responsibility is to these clients only and not to any third party who may rely on these documents.

Rev	Date	Issue
A	11/12/20	Development Application

Client
SINSW

 Education
School Infrastructure

Architect
BKA Architecture

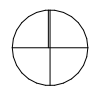
SYDNEY
Suite 104,
77 Dunning Ave,
Roseberry,
NSW 2018
T: +61 2 9318 9200
E: bka@bka.com.au
W: www.bka.com.au

NEWCASTLE
19 Bolton St,
Newcastle
NSW 2300
T: +61 2 4926 5563

BYRON BAY
Unit 1,
10 Station St,
Bangalow,
NSW 2479
T: +61 2 4926 5563

Scale at A1

Date
11/12/20

North

Drawn
TN, GL

Project
Nepean Creative and
Performing Arts High School

Checked
MK

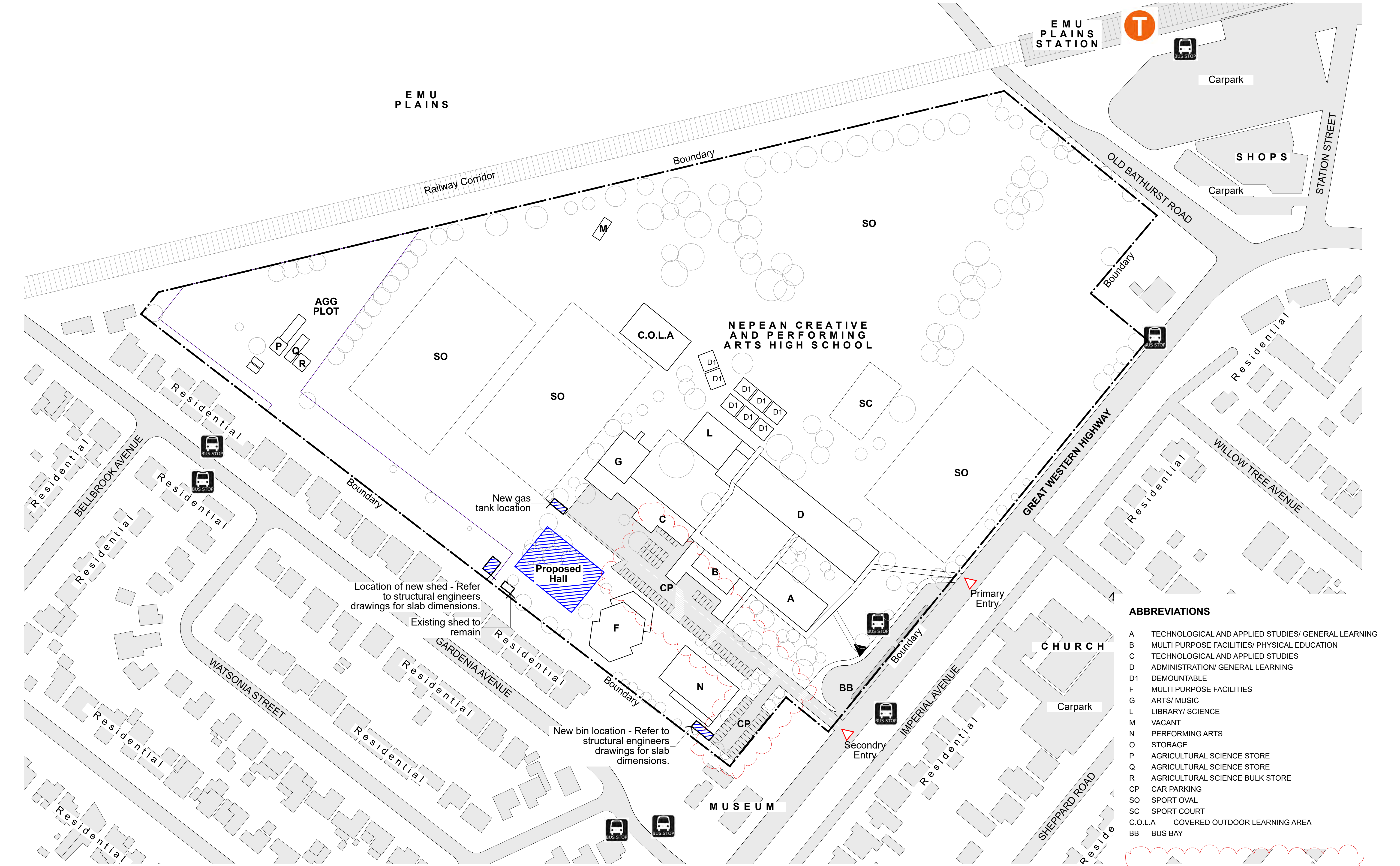
Status
Development
Application

Drawing
Cover Page

Project No.
20001

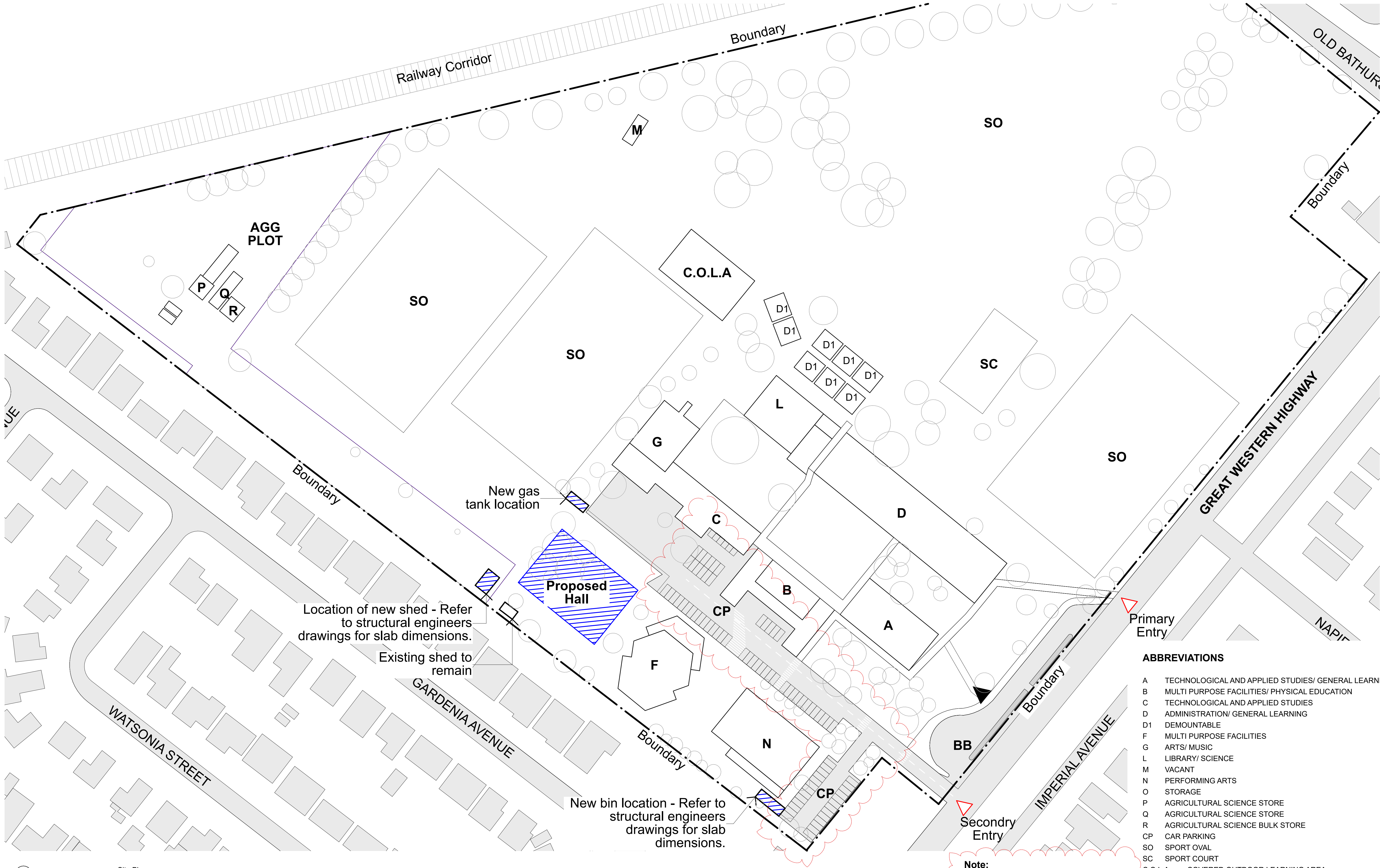
Revision
A

Drawing No.
DA000



1 Site Analysis Plan
1:1000

<div>General Notes</div> <div>DO NOT SCALE FROM DRAWING. USE FIGURED DIMENSIONS ONLY. CHECK ALL DIMENSIONS ON SITE BEFORE ANY MANUFACTURE OR CONSTRUCTION</div> <div>All dimensions are in millimetres unless stated otherwise. All architectural drawings are to be read in conjunction with the relevant consultant documents. All dimensions and levels are to be checked and verified on site prior to the commencement of work, shop drawings or fabrication of any components. Refer all discrepancies to the Architect for determination. Drawings are not to be scaled, use only figured dimensions. This drawing is copyright and must not be retained, copied or used without the permission of BKA Architecture. This document has been prepared for and on behalf of the clients noted on the drawing. BKA Architecture's responsibility is to these clients only and not to any third party who may rely on these documents.</div>	<table><tr><th>Rev</th><th>Date</th><th>Issue</th></tr><tr><td>A</td><td>11/12/20</td><td>Development Application</td></tr><tr><td>B</td><td>26/2/21</td><td>Additional Information</td></tr></table>	Rev	Date	Issue	A	11/12/20	Development Application	B	26/2/21	Additional Information	<div>Client</div> <div>SINSW</div> <div> Education School Infrastructure</div>	<div>Architect</div> <div>BKA Architecture</div> <div><div><div>SYDNEY</div><div>Suite 104, 77 Dunning Ave, Roseberry, NSW 2018 T: +61 2 9318 9200 E: bka@bka.com.au W: www.bka.com.au</div></div><div><div>NEWCASTLE</div><div>19 Bolton St, Newcastle NSW 2300 T: +61 2 4926 5563</div></div><div><div>BYRON BAY</div><div>Unit 1, 10 Station St, Bangalow NSW 2479 T: +61 2 4926 5563</div></div></div>	<div>Scale at A1</div> <div>1:1000</div> <div>Date</div> <div>26/2/21</div>	<div>North</div> <div></div> <div>Drawn</div> <div>TN, GL</div>	<div>Project</div> <div>Nepean Creative and Performing Arts High School</div> <div>Checked</div> <div>MK</div> <div>Status</div> <div>Development Application</div>	<div>Drawing</div> <div>Site Analysis Plan</div> <div>Project No.</div> <div>20001</div> <div>Revision</div> <div>B</div> <div>Drawing No.</div> <div>DA010</div>
Rev	Date	Issue														
A	11/12/20	Development Application														
B	26/2/21	Additional Information														



ABBREVIATIONS

A	TECHNOLOGICAL AND APPLIED STUDIES/ GENERAL LEARNING
B	MULTI PURPOSE FACILITIES/ PHYSICAL EDUCATION
C	TECHNOLOGICAL AND APPLIED STUDIES
D	ADMINISTRATION/ GENERAL LEARNING
D1	DEMOUNTABLE
F	MULTI PURPOSE FACILITIES
G	ARTS/ MUSIC
L	LIBRARY/ SCIENCE
M	VACANT
N	PERFORMING ARTS
O	STORAGE
P	AGRICULTURAL SCIENCE STORE
Q	AGRICULTURAL SCIENCE STORE
R	AGRICULTURAL SCIENCE BULK STORE
CP	CAR PARKING
SO	SPORT OVAL
SC	SPORT COURT
C.O.L.A	COVERED OUTDOOR LEARNING AREA
BB	BUS BAY

1 Site Plan
1:750

General Notes

DO NOT SCALE FROM DRAWING. USE FIGURED DIMENSIONS ONLY. CHECK ALL DIMENSIONS ON SITE BEFORE ANY MANUFACTURE OR CONSTRUCTION

All dimensions are in millimetres unless stated otherwise.

All architectural drawings are to be read in conjunction with the relevant consultant documents. All dimensions and levels are to be checked and verified on site prior to the commencement of work, shop drawings or fabrication of any components. Refer all discrepancies to the Architect for determination. Drawings are not to be scaled, use only figured dimensions. This drawing is copyright and must not be retained, copied or used without the permission of BKA Architecture. This document has been prepared for and on behalf of the clients noted on the drawing, BKA Architecture's responsibility is to these clients only and not to any third party who may rely on these documents.

Rev	Date	Issue
A	11/12/20	Development Application
B	26/2/21	Additional Information

Client
SINSW

 **Education**
School Infrastructure

Architect
BKA Architecture

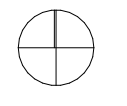
SYDNEY
Suite 104,
77 Dunning Ave,
Roseberry,
NSW 2018
T: +61 2 9318 9200
E: bka@bka.com.au
W: www.bka.com.au

NEWCASTLE
19 Bolton St,
Newcastle
NSW 2300
T: +61 2 4926 5563

BYRON BAY
Unit 1,
10 Station St,
Bangalow,
NSW 2479
T: +61 2 4926 5563

Scale at A1
1:750

Date
26/2/21

North

Drawn
TN, GL

Project
Nepean Creative and
Performing Arts High School

Checked
MK

Status
Development
Application

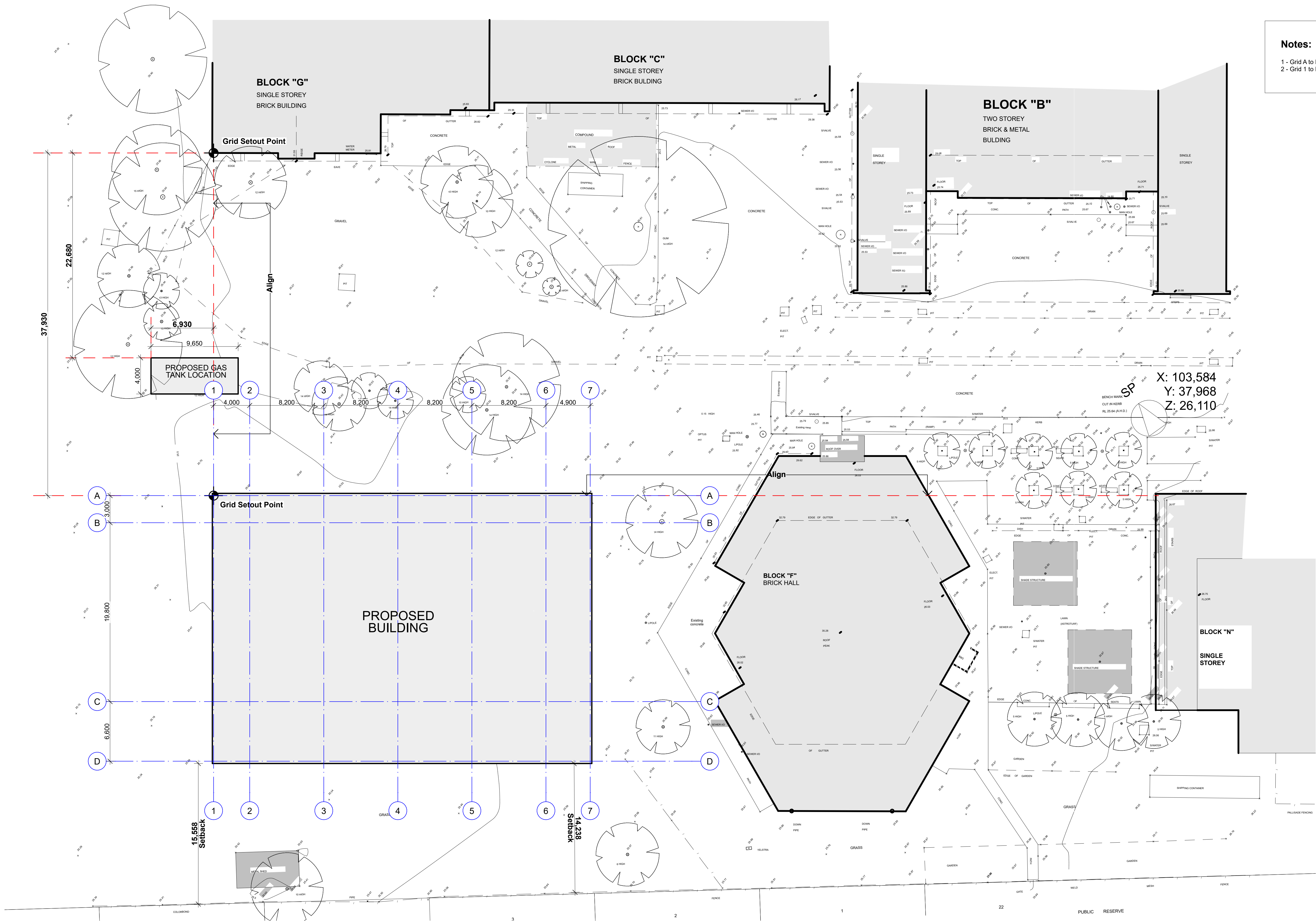
Drawing
Site Plan

Project No.
20001

Revision
B

Drawing No.
DA011

Notes:
1 - Grid A to line up with Block N
2 - Grid 1 to line up with corner of Block G



General Notes

DO NOT SCALE FROM DRAWING. USE FIGURED DIMENSIONS ONLY. CHECK ALL DIMENSIONS ON SITE BEFORE ANY MANUFACTURE OR CONSTRUCTION

All dimensions are in millimetres unless stated otherwise.

All architectural drawings are to be read in conjunction with the relevant consultant documents. All dimensions and levels are to be checked and verified on site prior to the commencement of work, shop drawings or fabrication of any components. Refer all discrepancies to the Architect for determination. Drawings are not to be scaled, use only figured dimensions. This drawing is copyright and must not be retained, copied or used without the permission of BKA Architecture. This document has been prepared for and on behalf of the clients noted on the drawing, BKA Architecture's responsibility is to these clients only and not to any third party who may rely on these documents.

Rev A Date 11/12/20 Issue Development Application

Client SINSW



Architect
BKA Architecture

SYDNEY Suite 104, 77 Dunning Ave, Roseberry, NSW 2018
T: +61 2 9318 9200
E: bka@bka.com.au
W: www.bka.com.au

NEWCASTLE 19 Bolton St, Newcastle NSW 2300
T: +61 2 4926 5563

BYRON BAY Unit 1, 10 Station St, Bangalow NSW 2479
T: +61 2 4926 5563

Scale at A1
1:200

Date
11/12/20

North
Drawn
TN, GL

Project
Nepean Creative and Performing Arts High School

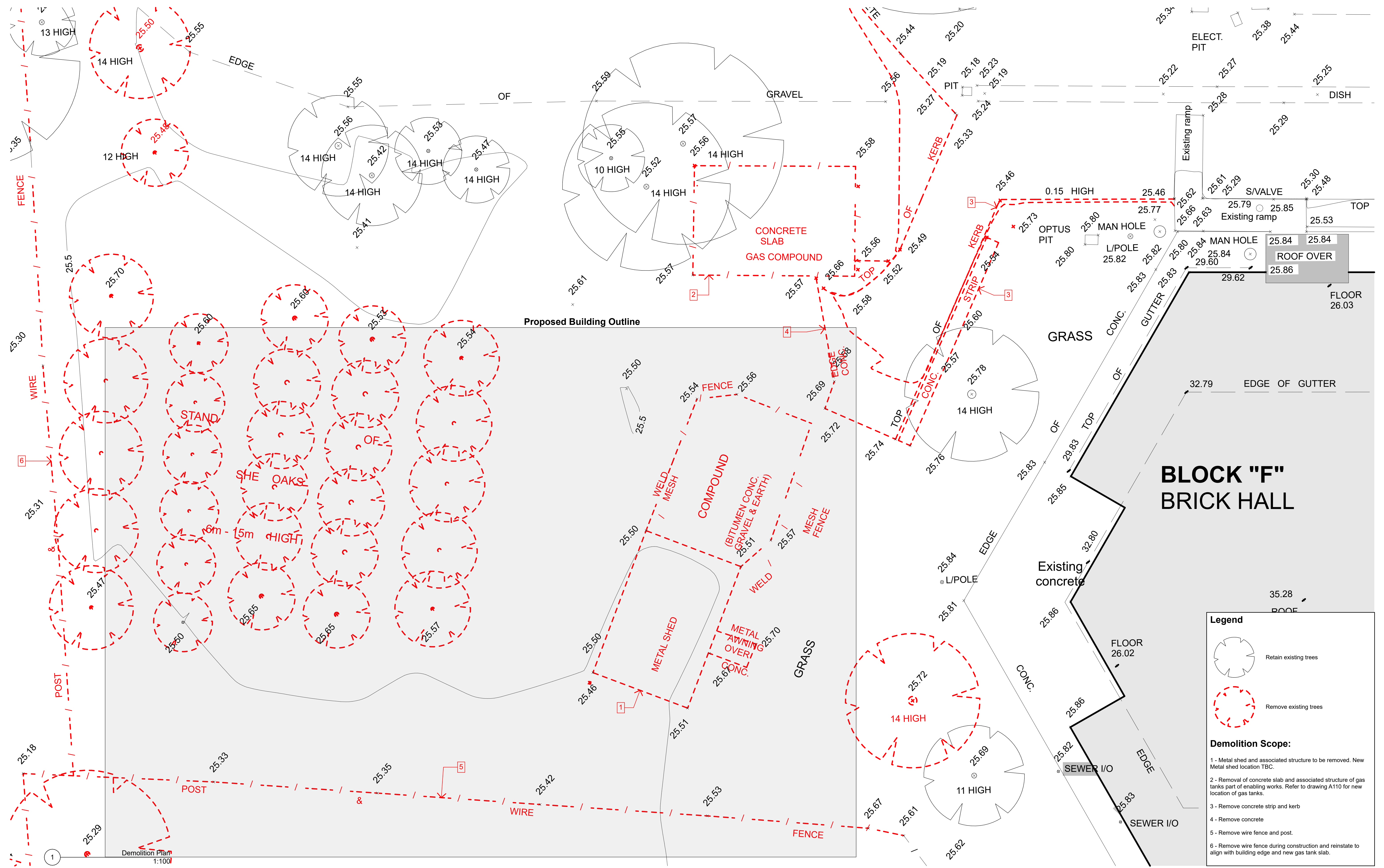
Checked MK
Status Development Application

Drawing
Building Site plan

Project No.
20001

Revision
A

Drawing No.
DA020



<div>General Notes</div> <div>DO NOT SCALE FROM DRAWING. USE FIGURED DIMENSIONS ONLY. CHECK ALL DIMENSIONS ON SITE BEFORE ANY MANUFACTURE OR CONSTRUCTION</div> <div>All dimensions are in millimetres unless stated otherwise.</div> <div>All architectural drawings are to be read in conjunction with the relevant consultant documents. All dimensions and levels are to be checked and verified on site prior to the commencement of work, shop drawings or fabrication of any components. Refer all discrepancies to the Architect for determination. Drawings are not to be scaled, use only figured dimensions. This drawing is copyright and must not be retained, copied or used without the permission of BKA Architecture. This document has been prepared for and on behalf of the clients noted on the drawing. BKA Architecture's responsibility is to these clients only and not to any third party who may rely on these documents.</div>	<table><tr><th>Rev</th><th>Date</th><th>Issue</th></tr><tr><td>A</td><td>11/12/20</td><td>Development Application</td></tr></table>	Rev	Date	Issue	A	11/12/20	Development Application	<div>Client</div> <div>SINSW</div> <div> Education School Infrastructure</div>	<div>Architect</div> <div>BKA Architecture</div> <div><div><div>SYDNEY</div><div>Suite 104, 77 Dunning Ave, Roseberry, NSW 2018 T: +61 2 9318 9200 E: bka@bka.com.au W: www.bka.com.au</div></div><div><div>NEWCASTLE</div><div>19 Bolton St, Newcastle NSW 2300 T: +61 2 4926 5563</div></div><div><div>BYRON BAY</div><div>Unit 1, 10 Station St, Bangalow NSW 2479 T: +61 2 4926 5563</div></div></div>	<div>Scale at A1</div> <div>1:100</div> <div>Date</div> <div>11/12/20</div> <div>North</div> <div></div> <div>Drawn</div> <div>TN, GL</div>	<div>Project</div> <div>Nepean Creative and Performing Arts High School</div> <div>Checked</div> <div>MK</div> <div>Status</div> <div>Development Application</div>	<div>Drawing</div> <div>Demolition Plan</div> <div><table><tr><th>Project No.</th><th>Revision</th><th>Drawing No.</th></tr><tr><td>20001</td><td>A</td><td>DA030</td></tr></table></div>	Project No.	Revision	Drawing No.	20001	A	DA030
Rev	Date	Issue																
A	11/12/20	Development Application																
Project No.	Revision	Drawing No.																
20001	A	DA030																

WALL TYPES

CODE	DESCRIPTION	CONSTRUCTION
A1	External Wall - Brick + Stud 1. Brickwork 2. 50mm Cavity 3. Heavy Duty Vapour permeable sarking membrane 4. 150mm Steel Stud at 600 cts with selected Insulation 5. 50mm Furring Channel 6. 13mm Impact Resistant PB lining with selected Paint finish	
A2	External Wall - Metal Cladding + Stud 1. Selected metal cladding as per manufacturers specification 2. 75mm Furring Channel 3. Heavy Duty Vapour permeable sarking membrane 4. 150mm Steel Stud at 600 cts with selected Insulation 5. 50mm Furring Channel 6. 13mm Impact Resistant PB lining with selected Paint finish	
A3	External Wall - FC Cladding + Double Stud 1. CFC sheet as per manufacturers specification 2. 35mm Furring Channel 3. Heavy Duty Vapour permeable sarking membrane 4. 150mm Steel Stud at 600 cts with selected Insulation 5. 40mm Cavity 6. 92mm Steel Stud 7. 13mm Impact Resistant PB lining with selected Paint finish	
A4	External Wall - Brick + Double Stud 1. Brickwork 2. 50mm Cavity 3. Heavy Duty Vapour permeable sarking membrane 4. 150mm Steel Stud at 600 cts with selected Insulation 5. 40mm Cavity 6. 92mm Steel Stud 7. 13mm Impact Resistant PB lining with selected Paint finish	
A5	External Wall - Metal Cladding + Double Stud 1. Selected metal cladding as per manufacturers specification 2. 75mm Furring Channel 3. Heavy Duty Vapour permeable sarking membrane 4. 150mm Steel Stud at 600 cts with selected Insulation 5. 40mm Cavity 6. 92mm Steel Stud 7. 13mm Impact Resistant PB lining with selected Paint finish	

CODE	DESCRIPTION	CONSTRUCTION
B1	Internal Wall 1. 13mm Impact Resistant PB lining to both wall sides with selected paint finish 2. 92mm steel studs at 600 cts with selected insulation Notes: - For Wet Areas, substitute PB for FC sheeting with recessed edge, waterproofing and nominated tiles - For acoustic compliance, allow for 2x13mm PB lining to both wall sides where recommended by Acoustic consultant	
B2	Internal Wall 1. 13mm Impact Resistant PB lining to both wall sides with selected paint finish 2. 150mm steel studs at 600 cts with selected insulation Notes: - For Wet Areas, substitute PB for FC sheeting with recessed edge, waterproofing and nominated tiles - For acoustic compliance, allow for 2x13mm PB lining to both wall sides where recommended by Acoustic consultant	
B3	Internal Wall 1. 13mm Impact Resistant PB lining to both wall sides with selected paint finish 2. 35mm Furring Channel 3. 190mm core-filled blockwork 4. 35mm Furring Channel Note: - For Wet Areas, substitute PB for FC sheeting with recessed edge, waterproofing and nominated tiles	
B4	Internal Wall 1. 13mm Impact Resistant PB lining to both wall sides with selected paint finish 2. 76mm steel studs at 600 cts with selected insulation Notes: - For Wet Areas, substitute PB for FC sheeting with recessed edge, waterproofing and nominated tiles - For acoustic compliance, allow for 2x13mm PB lining to both wall sides where recommended by Acoustic consultant	
B5	Internal Wall 1. 13mm Impact Resistant PB lining to both wall sides with selected paint finish 2. 2x 150mm steel studs at 600 cts with selected insulation 3. 20mm gap between studs Notes: - For Wet Areas, substitute PB for FC sheeting with recessed edge, waterproofing and nominated tiles - For acoustic compliance, allow for 2x13mm PB lining to both wall sides where recommended by Acoustic consultant	
B6	Internal Wall 1. 13mm Impact Resistant PB lining to both wall sides with selected paint finish 2. 2x 76mm steel studs at 600 cts with selected insulation 3. 20mm gap between studs Notes: - For Wet Areas, substitute PB for FC sheeting with recessed edge, waterproofing and nominated tiles	
B7	Internal Wall - Fire Rated 60/60/60 1. 1 x 16mm Gyprock FyrcekPlasterboard lining to both wall sides with selected paint finish 2. 76mm steel studs at 600 cts with selected insulation Notes: - For Electrical Distribution Boards, allow for 120/120/120 FR	
B8	Internal Wall - Fire Rated 60/60/60 1. FC sheeting with recessed edge, waterproofing and nominated tiles 2. 64mm steel studs at 600 cts with selected insulation	

NOTES

All Vapour Permeable Sarking Membrane to be heavy duty and in accordance with AS/NZS 4200.1 Parts 1 and 2.

All Cladding to be installed as per Manufacturer's Specification and as per wind loading recommendations. Ensure Capping to roof and wall junctions, corner flashing to wall junction detail.

Refer to general Materials, Finishes and Fixtures schedule for nominated external and internal finishes.

Note for Termination of Membranes - Penetrations as per AS 4654.2

Any fixings that penetrate the membrane shall be sealed. The sealant shall be compatible with the surface material. Where backing rods are used to support the sealant, they shall be a minimum of 12 mm. Refer to AS 4654.2 - Typical details of penetrations are shown in Figures 2.10 and 2.11. Refer to AS 4654.2 - Typical details of metal post supports are shown in Figure 2.12.

Notes for Acoustic Requirements

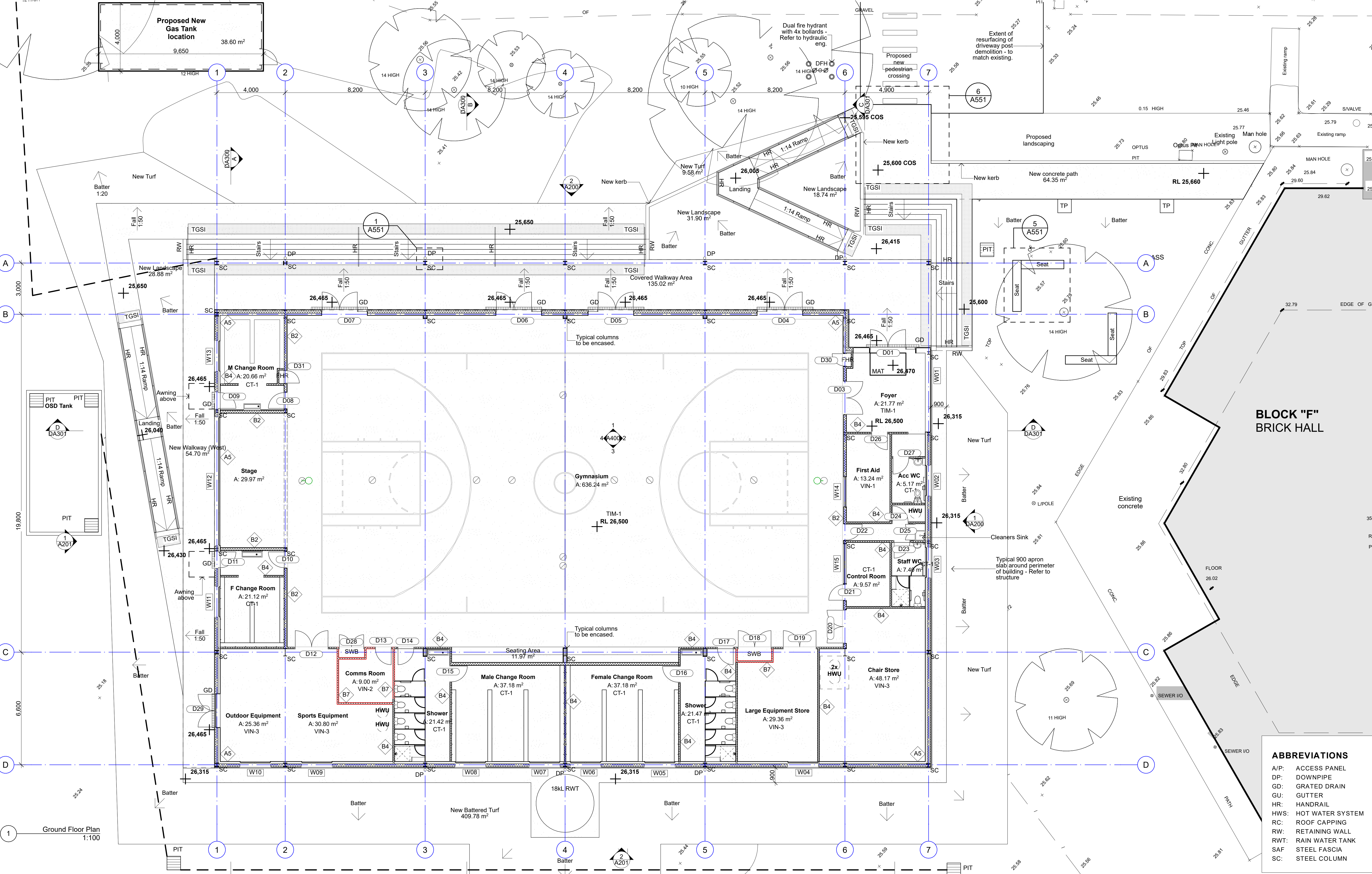
Compliance with Statutory Requirements – Ensure Compliance with AS1668 for emergency requirements is to be followed. External noise levels requirements of the building management, local council and any other site specific requirements to be adhered to

Vibration isolation – All plant and equipment to be installed as part of the fitout is required to be vibration isolated from the building structure such that internal noise levels detailed in this report are complied with

Sealants – All sealants to be used on the project are to include a flexible acoustic sealant. All walls should be sealed at the head and base with backing rods and non-hardening flexible mastic, or be sealed under the head and bottom plates. The non-hardening mastic may be acrylic, polyurethane or silicone; any other proposed acoustic sealant should be approved by the acoustic consultant.

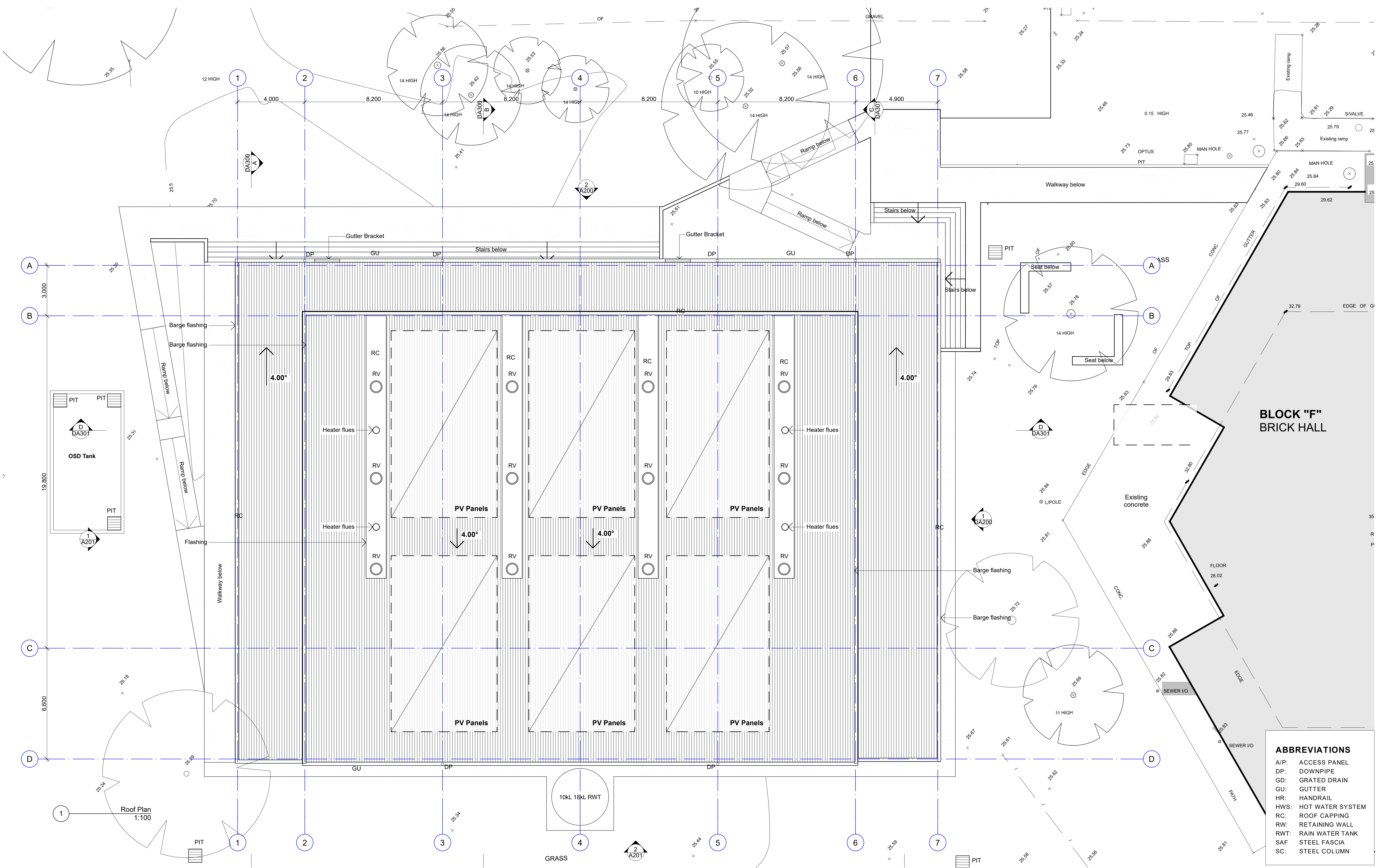
Refer to Section J Report and Acoustic Report for insulation requirements

General Notes DO NOT SCALE FROM DRAWING. USE FIGURED DIMENSIONS ONLY. CHECK ALL DIMENSIONS ON SITE BEFORE ANY MANUFACTURE OR CONSTRUCTION All dimensions are in millimetres unless stated otherwise. All architectural drawings are to be read in conjunction with the relevant consultant documents. All dimensions and levels are to be checked and verified on site prior to the commencement of work, shop drawings or fabrication of any components. Refer all discrepancies to the Architect for determination. Drawings are not to be scaled, use only figured dimensions. This drawing is copyright and must not be retained, copied or used without the permission of BKA Architecture. This document has been prepared for and on behalf of the clients noted on the drawing. BKA Architecture's responsibility is to these clients only and not to any third party who may rely on these documents.		Rev A	Date 11/12/20	Issue Development Application	Client SINSW 	Architect BKA Architecture SYDNEY Suite 104, 77 Dunning Ave, Rosebery, NSW 2018 T: +61 2 9318 9200 E: bka@bka.com.au W: www.bka.com.au NEWCASTLE 19 Bolton St, Newcastle NSW 2300 T: +61 2 4926 5563 T: +61 2 4926 5563 BYRON BAY Unit 1, 10 Station St, Bangalow NSW 2479 T: +61 2 4926 5563	Scale at A1 Date 11/12/20	North TN, GL	Project Nepean Creative and Performing Arts High School Checked MK Status Development Application	Drawing Wall Types Project No. 20001 Revision A Drawing No. DA040
--	--	-----------------	-------------------------	---	--------------------------------	---	---	------------------------	---	--



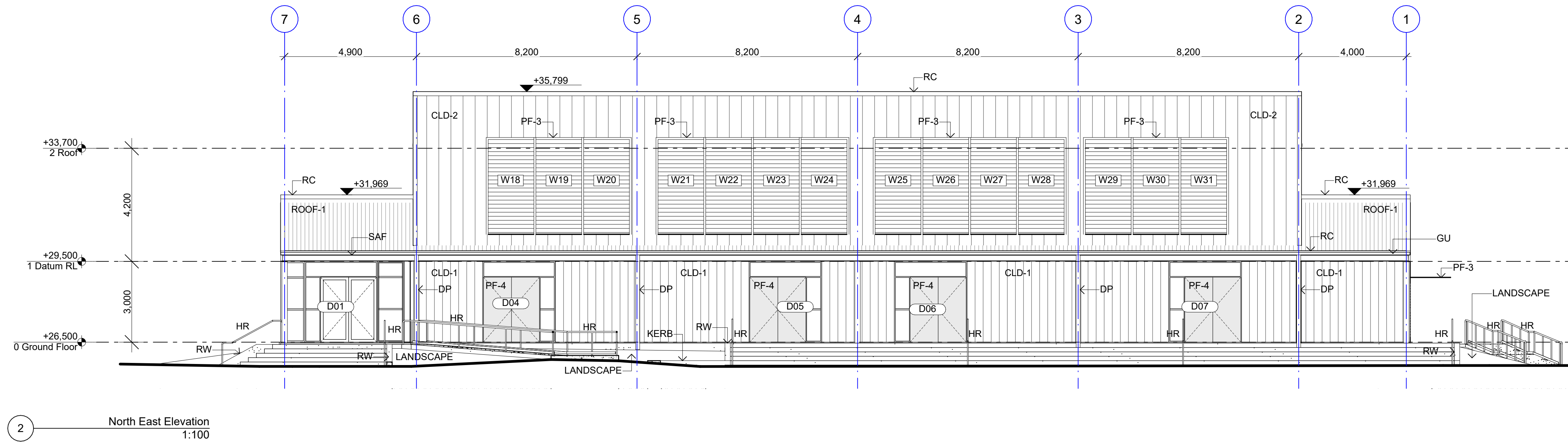
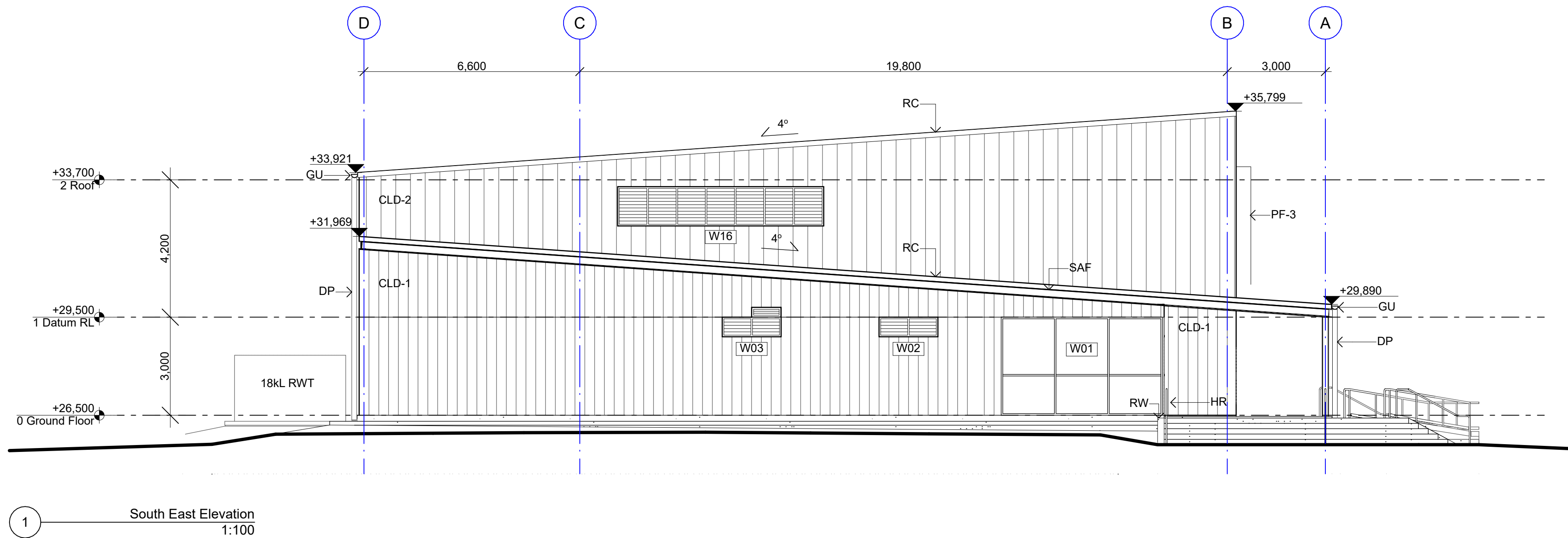
ABBREVIATIONS	
A/P:	ACCESS PANEL
DP:	DOWNSPIPE
GD:	GRATED DRAIN
GU:	GUTTER
HR:	HANDRAIL
HWS:	HOT WATER SYSTEM
RC:	ROOF CAPPING
RW:	RETAINING WALL
RWT:	RAIN WATER TANK
SAF:	STEEL FASCIA
SC:	STEEL COLUMN

<div>General Notes</div> <div>DO NOT SCALE FROM DRAWING. USE FIGURED DIMENSIONS ONLY. CHECK ALL DIMENSIONS ON SITE BEFORE ANY MANUFACTURE OR CONSTRUCTION.</div> <div>All dimensions are in millimetres unless stated otherwise. All architectural drawings are to be read in conjunction with the relevant consultant documents. All dimensions and levels are to be checked and verified on site prior to the commencement of work, shop drawings or fabrication of any components. Refer all discrepancies to the Architect for determination. Drawings are not to be scaled, use only figured dimensions. This drawing is copyright and must not be retained, copied or used without the permission of BKA Architecture. This document has been prepared for and on behalf of the clients noted on the drawing. BKA Architecture's responsibility is to these clients only and not to any third party who may rely on these documents.</div>	<div><div>Rev</div><div>A</div><div>Date</div><div>11/12/20</div><div>Issue</div><div>Development Application</div></div>	<div><div>Client</div><div>SINSW</div><div> Education</div><div>School Infrastructure</div></div>	<div><div>Architect</div><div>BKA Architecture</div><div><div><div>SYDNEY</div><div>Suite 104, 77 Dunning Ave, Roseberry, NSW 2018</div></div><div><div>NEWCASTLE</div><div>Unit 1, 10 Station St, Newcastle NSW 2300</div></div><div><div>BYRON BAY</div><div>Unit 1, 10 Station St, Bangalow NSW 2479</div></div><div><div>+61 2 9318 9200</div><div>E: bka@bka.com.au</div><div>W: www.bka.com.au</div></div><div><div>T: +61 2 4926 5563</div><div>T: +61 2 4926 5563</div></div></div></div>	<div><div>Scale at A1</div><div>1:100</div><div>Date</div><div>11/12/20</div></div>	<div><div>North</div><div></div><div>Drawn</div><div>TN, GL</div></div>	<div><div>Project</div><div>Nepean Creative and Performing Arts High School</div><div><div>Checked</div><div>MK</div><div>Status</div><div>Development Application</div></div></div>	<div><div>Drawing</div><div>Ground Floor Plan</div><div><div>Project No.</div><div>20001</div><div>Revision</div><div>A</div><div>Drawing No.</div><div>DA100</div></div></div>
--	---	--	---	---	--	--	---



ABBREVIATIONS	
A/P:	ACCESS PANEL
DP:	DOWNSPIPE
GD:	GRATED DRAIN
GU:	GUTTER
HR:	HANDRAIL
HWS:	HOT WATER SYSTEM
RC:	ROOF CAPPING
RW:	RETAINING WALL
RWT:	RAIN WATER TANK
SAF:	STEEL FASCIA
SC:	STEEL COLUMN

<p>General Notes</p> <p>DO NOT SCALE FROM DRAWING. USE FIGURED DIMENSIONS ONLY. CHECK ALL DIMENSIONS ON SITE BEFORE ANY MANUFACTURE OR CONSTRUCTION</p> <p>All dimensions are in millimetres unless stated otherwise.</p> <p>All architectural drawings are to be read in conjunction with the relevant consultant documents. All dimensions and levels are to be checked and verified on site prior to the commencement of work, shop drawings or fabrication of any components. Refer all discrepancies to the Architect for determination. Drawings are not to be scaled, use only figured dimensions. This drawing is copyright and must not be retained, copied or used without the permission of BKA Architecture. This document has been prepared for and on behalf of the clients noted on the drawing, BKA Architecture's responsibility is to these clients only and not to any third party who may rely on these documents.</p>	<table><tr><th>Rev</th><th>Date</th><th>Issue</th></tr><tr><td>A</td><td>11/12/20</td><td>Development Application</td></tr></table>	Rev	Date	Issue	A	11/12/20	Development Application	<p>Client</p> <p>SINSW</p> <p> Education School Infrastructure</p>	<p>Architect</p> <p>BKA Architecture</p> <p>SYDNEY Suite 104, 77 Dunning Ave, Rosebery, NSW 2018 T: +61 2 9318 9200 E: bka@bka.com.au W: www.bka.com.au</p> <p>NEWCASTLE 19 Bolton St, Newcastle NSW 2300</p> <p>BYRON BAY Unit 1, 10 Station St, Bangalow NSW 2479 T: +61 2 4926 5563 T: +61 2 4926 5563</p>	<p>Scale at A1</p> <p>1:100</p> <p>Date</p> <p>11/12/20</p> <p>North</p> <p></p> <p>Drawn</p> <p>TN, GL</p>	<p>Project</p> <p>Nepean Creative and Performing Arts High School</p> <p>Checked</p> <p>MK</p> <p>Status</p> <p>Development Application</p>	<p>Drawing</p> <p>Roof Plan</p> <p>Project No.</p> <p>20001</p> <p>Revision</p> <p>A</p> <p>Drawing No.</p> <p>DA101</p>
Rev	Date	Issue										
A	11/12/20	Development Application										



ABBREVIATIONS

A/P:	ACCESS PANEL
DP:	DOWNPIPE
GD:	GRATED DRAIN
GU:	GUTTER
HR:	HANDRAIL
HWS:	HOT WATER SYSTEM
RC:	ROOF CAPPING
RW:	RETAINING WALL
RWT:	RAIN WATER TANK
SAF:	STEEL FASCIA
SC:	STEEL COLUMN

General Notes

DO NOT SCALE FROM DRAWING. USE FIGURED DIMENSIONS ONLY. CHECK ALL DIMENSIONS ON SITE BEFORE ANY MANUFACTURE OR CONSTRUCTION

All dimensions are in millimetres unless stated otherwise. All architectural drawings are to be read in conjunction with the relevant consultant documents. All dimensions and levels are to be checked and verified on site prior to the commencement of work, shop drawings or fabrication of any components. Refer all discrepancies to the Architect for determination. Drawings are not to be scaled, use only figured dimensions. This drawing is copyright and must not be retained, copied or used without the permission of BKA Architecture. This document has been prepared for and on behalf of the clients noted on the drawing, BKA Architecture's responsibility is to these clients only and not to any third party who may rely on these documents.

Rev	Date	Issue
A	11/12/20	Development Application

Client
SINSW



Architect
BKA Architecture

SYDNEY
Suite 104,
77 Dunning Ave,
Roseberry,
NSW 2018
T: +61 2 9318 9200
E: bka@bka.com.au
W: www.bka.com.au

NEWCASTLE
19 Bolton St,
Newcastle
NSW 2300
T: +61 2 4926 5563

BYRON BAY
Unit 1,
10 Station St,
Bangalow,
NSW 2479
T: +61 2 4926 5563

Scale at A1
1:100

Date
11/12/20

North

Drawn
TN, GL

Project
Nepean Creative and
Performing Arts High School

Checked
MK

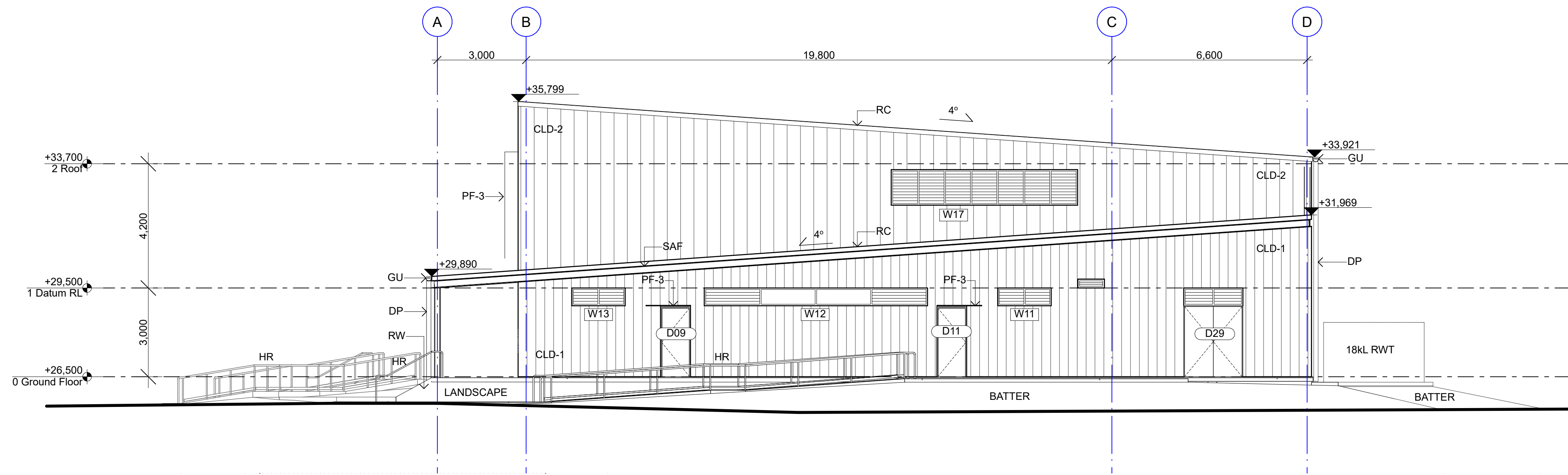
Status
Development
Application

Drawing
Elevations Sheet 01

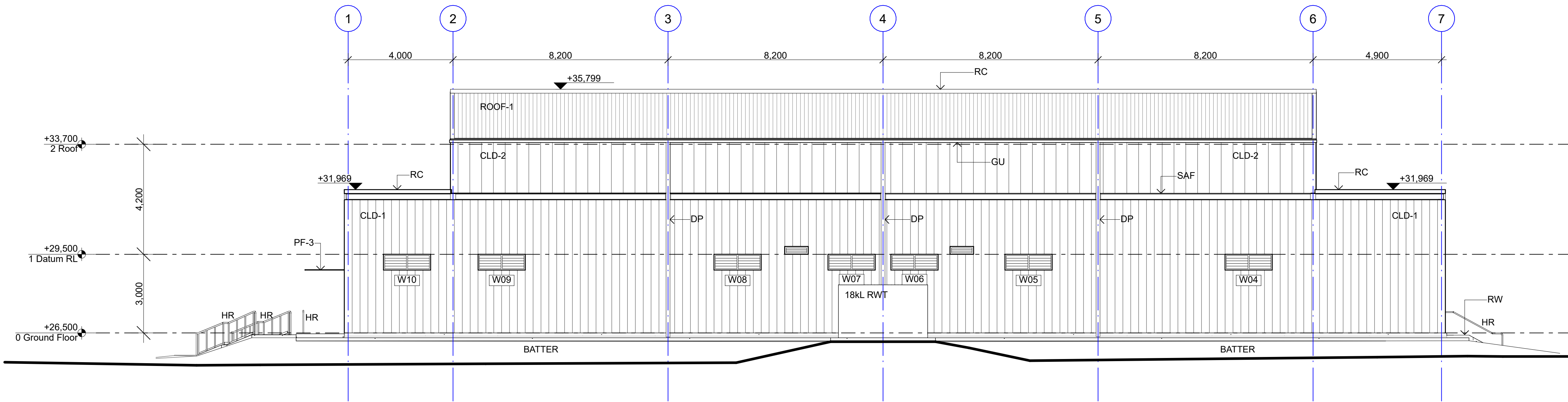
Project No.
20001

Revision
A

Drawing No.
DA200



1 North West Elevation
1:100



2 South West Elevation
1:100

ABBREVIATIONS

A/P:	ACCESS PANEL
DP:	DOWNPIPE
GD:	GRATED DRAIN
GU:	GUTTER
HR:	HANDRAIL
HWS:	HOT WATER SYSTEM
RC:	ROOF CAPPING
RW:	RETAINING WALL
RWT:	RAIN WATER TANK
SAF:	STEEL FASCIA
SC:	STEEL COLUMN

General Notes

DO NOT SCALE FROM DRAWING. USE FIGURED DIMENSIONS ONLY. CHECK ALL DIMENSIONS ON SITE BEFORE ANY MANUFACTURE OR CONSTRUCTION

All dimensions are in millimetres unless stated otherwise.
All architectural drawings are to be read in conjunction with the relevant consultant documents. All dimensions and levels are to be checked and verified on site prior to the commencement of work, shop drawings or fabrication of any components. Refer all discrepancies to the Architect for determination. Drawings are not to be scaled, use only figured dimensions. This drawing is copyright and must not be retained, copied or used without the permission of BKA Architecture. This document has been prepared for and on behalf of the clients noted on the drawing, BKA Architecture's responsibility is to these clients only and not to any third party who may rely on these documents.

Rev	Date	Issue
A	11/12/20	Development Application

Client
SINSW



Architect

BKA Architecture

SYDNEY
Suite 104,
77 Dunning Ave,
Roseberry,
NSW 2018
T: +61 2 9318 9200
E: bka@bka.com.au
W: www.bka.com.au

NEWCASTLE
19 Bolton St,
Newcastle
NSW 2300

BYRON BAY
Unit 1,
10 Station St,
Bangalow,
NSW 2479
T: +61 2 4926 5563
T: +61 2 4926 5563

Scale at A1
1:100

Date
11/12/20

North

Drawn
TN, GL

Project

Nepean Creative and
Performing Arts High School

Checked
MK

Status

Development
Application

Drawing

Elevations Sheet 02

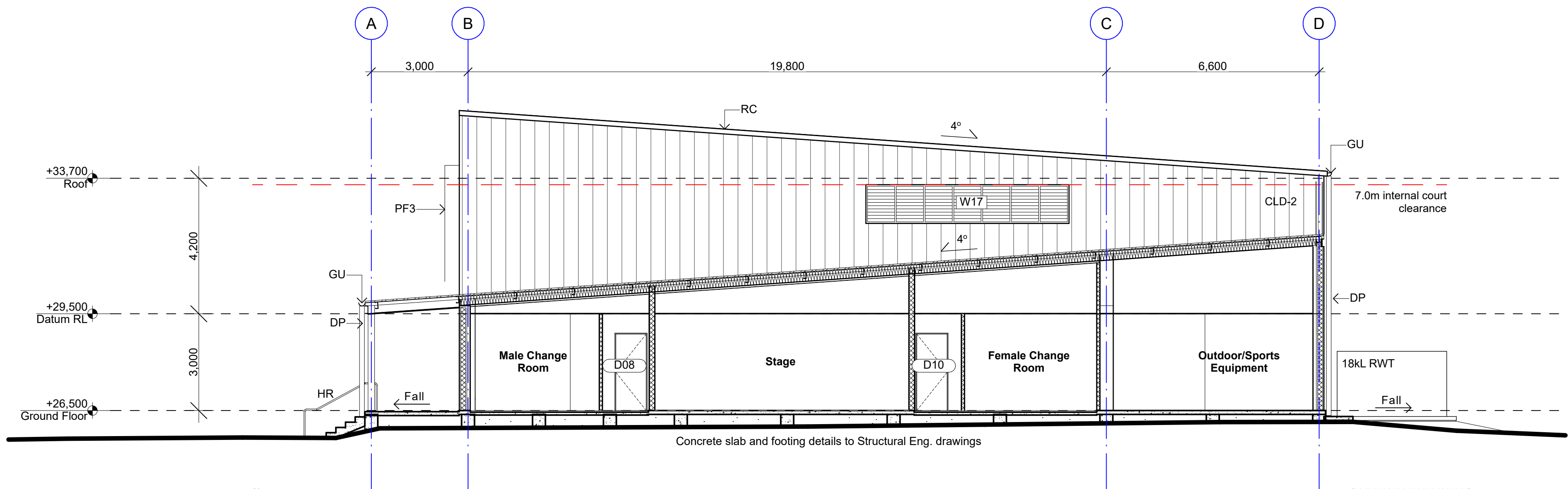
Project No.
20001

Revision
A

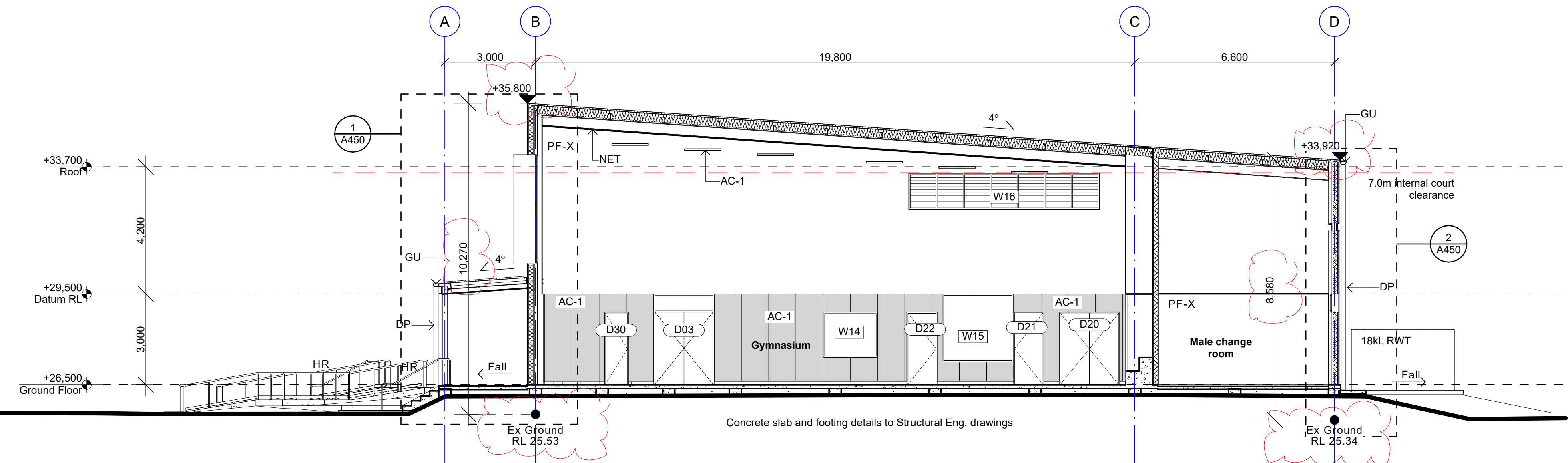
Drawing No.
DA201

Notes:

1 - For concrete and slab footing details refer to structural engineers drawings



1 Section A
1:100



2 Section B
1:100

ABBREVIATIONS

A/P: ACCESS PANEL
DP: DOWNPIPE
GD: GRATED DRAIN
GU: GUTTER
HR: HANDRAIL
HWS: HOT WATER SYSTEM
RC: ROOF CAPPING
RW: RETAINING WALL
RWT: RAIN WATER TANK
SAF: STEEL FASCIA
SC: STEEL COLUMN

General Notes

DO NOT SCALE FROM DRAWING. USE FIGURED DIMENSIONS ONLY. CHECK ALL DIMENSIONS ON SITE BEFORE ANY MANUFACTURE OR CONSTRUCTION

All dimensions are in millimetres unless stated otherwise.
All architectural drawings are to be read in conjunction with the relevant consultant documents. All dimensions and levels are to be checked and verified on site prior to the commencement of work, shop drawings or fabrication of any components. Refer all discrepancies to the Architect for determination. Drawings are not to be scaled, use only figured dimensions. This drawing is copyright and must not be retained, copied or used without the permission of BKA Architecture. This document has been prepared for and on behalf of the clients noted on the drawing. BKA Architecture's responsibility is to these clients only and not to any third party who may rely on these documents.

Rev	Date	Issue
A	11/12/20	Development Application
B	11/2/21	Additional Information

Client
SINSW



Architect

BKA Architecture

SYDNEY Suite 104, 77 Dunning Ave, Rosebery, NSW 2018
T: +61 2 9318 9200
E: bka@bka.com.au
W: www.bka.com.au

NEWCASTLE 19 Bolton St, Newcastle NSW 2300
T: +61 2 4926 5563

BYRON BAY Unit 1, 10 Station St, Bangalow NSW 2479
T: +61 2 4926 5563

Scale at A1
1:100

Date
11/2/21

North

Drawn
TN, GL

Project

Nepean Creative and Performing Arts High School

Checked
MK

Status

Development Application

Drawing

Sections Sheet 01

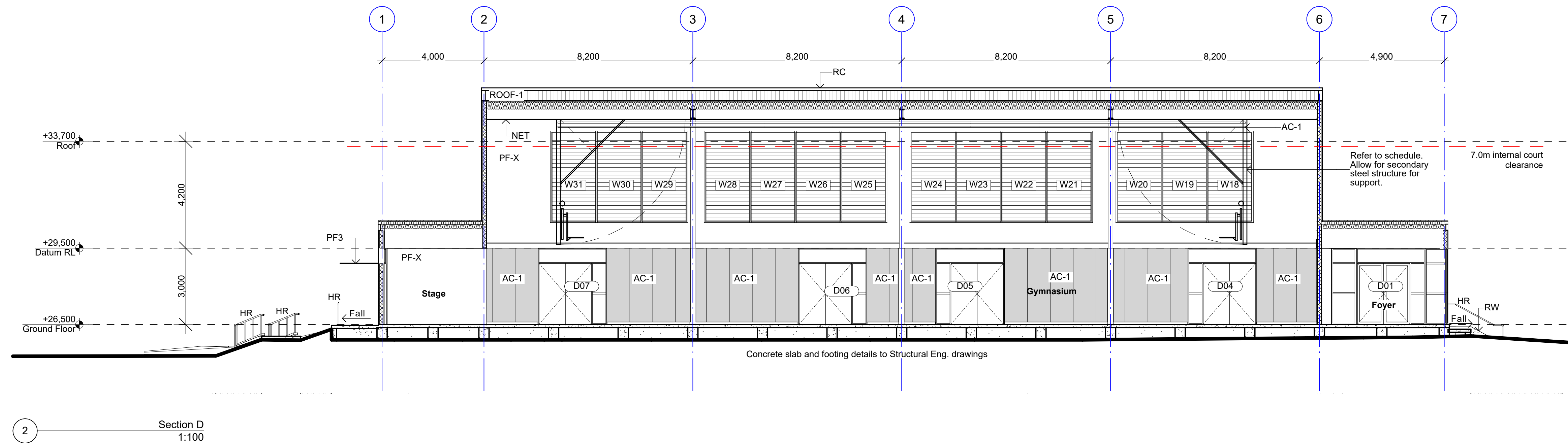
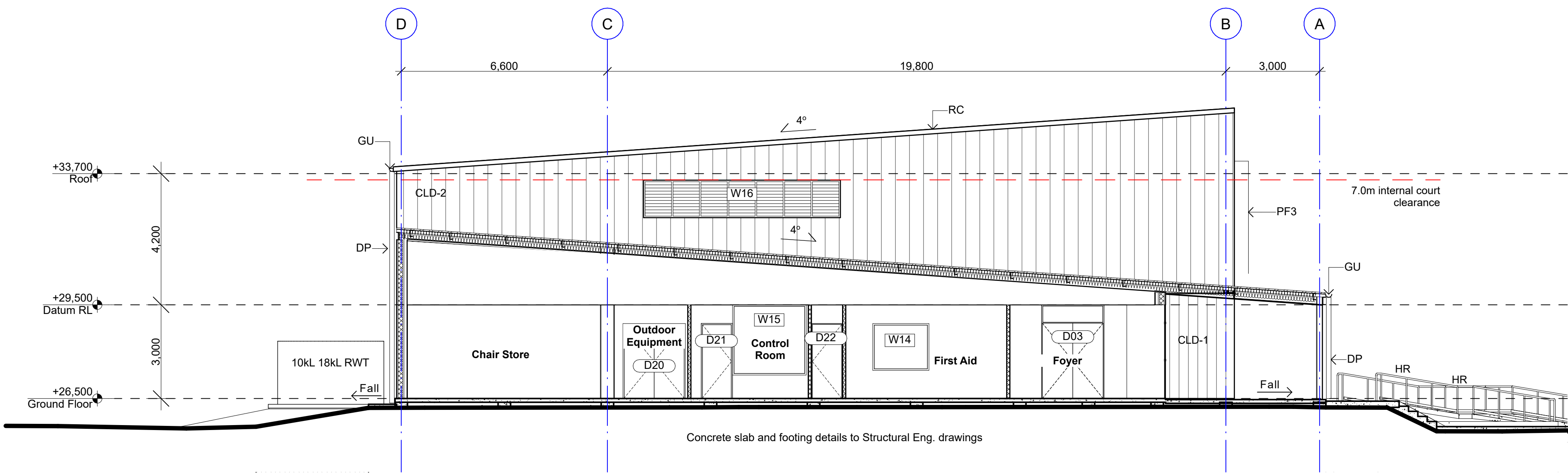
Project No.
20001

Revision
B

Drawing No.
DA300

Notes:

1 - For concrete and slab footing details refer to structural engineers drawings



ABBREVIATIONS

A/P: ACCESS PANEL
DP: DOWNPIPE
GD: GRATED DRAIN
GU: GUTTER
HR: HANDRAIL
HWS: HOT WATER SYSTEM
RC: ROOF CAPPING
RW: RETAINING WALL
RWT: RAIN WATER TANK
SAF: STEEL FASCIA
SC: STEEL COLUMN

General Notes

DO NOT SCALE FROM DRAWING. USE FIGURED DIMENSIONS ONLY. CHECK ALL DIMENSIONS ON SITE BEFORE ANY MANUFACTURE OR CONSTRUCTION

All dimensions are in millimetres unless stated otherwise.
All architectural drawings are to be read in conjunction with the relevant consultant documents. All dimensions and levels are to be checked and verified on site prior to the commencement of work, shop drawings or fabrication of any components. Refer all discrepancies to the Architect for determination. Drawings are not to be scaled, use only figured dimensions. This drawing is copyright and must not be retained, copied or used without the permission of BKA Architecture. This document has been prepared for and on behalf of the clients noted on the drawing, BKA Architecture's responsibility is to these clients only and not to any third party who may rely on these documents.

Rev A Date 11/12/20 Issue Development Application

Client SINSW



Architect BKA Architecture

SYDNEY Suite 104, 77 Dunning Ave, Roseberry, NSW 2018
NEWCASTLE 19 Bolton St, Newcastle NSW 2300
BYRON BAY Unit 1, 10 Station St, Bangalow NSW 2479
T: +61 2 9318 9200 E: bka@bka.com.au W: www.bka.com.au
T: +61 2 4926 5563 T: +61 2 4926 5563

Scale at A1 1:100

Date 11/12/20

North

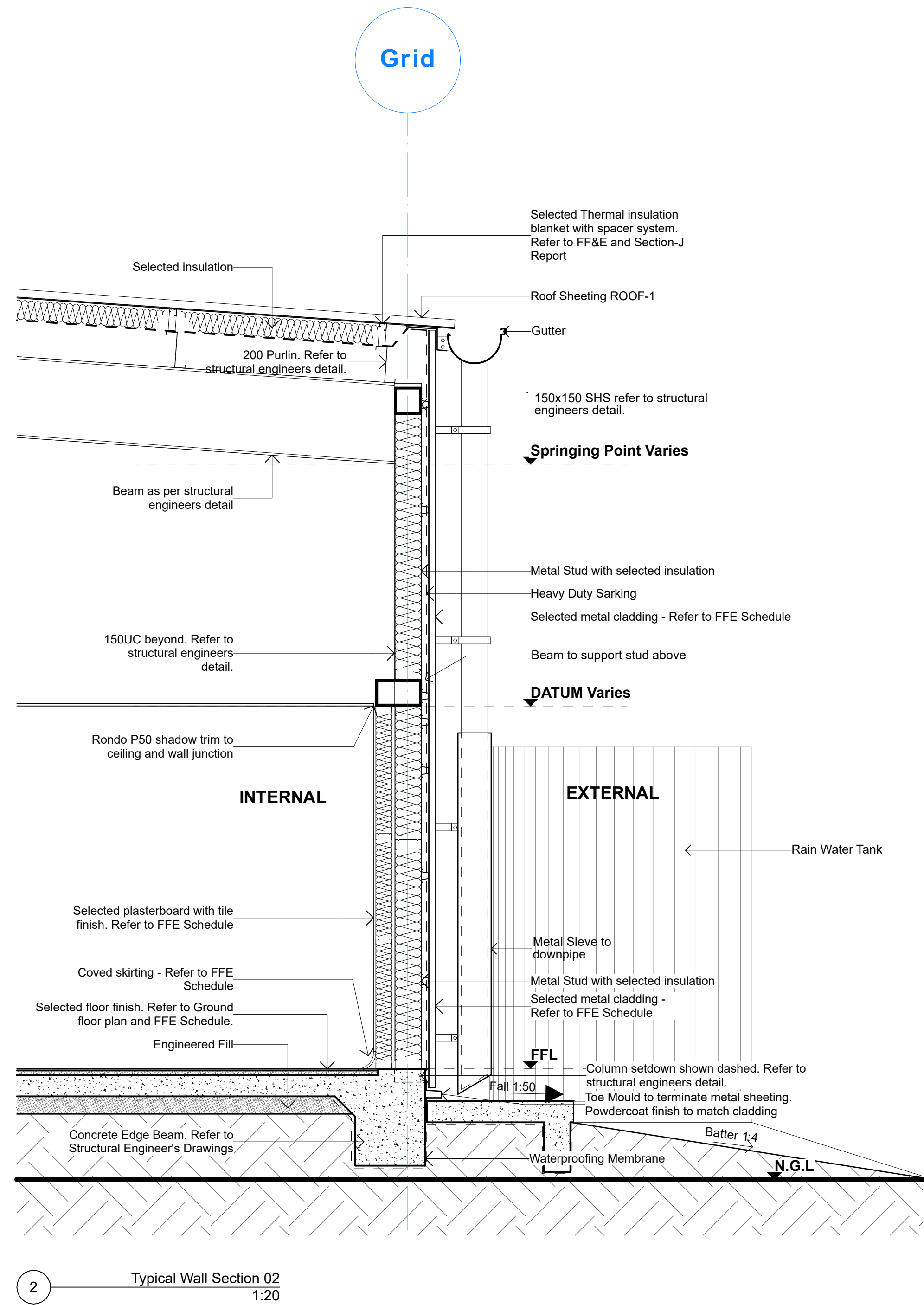
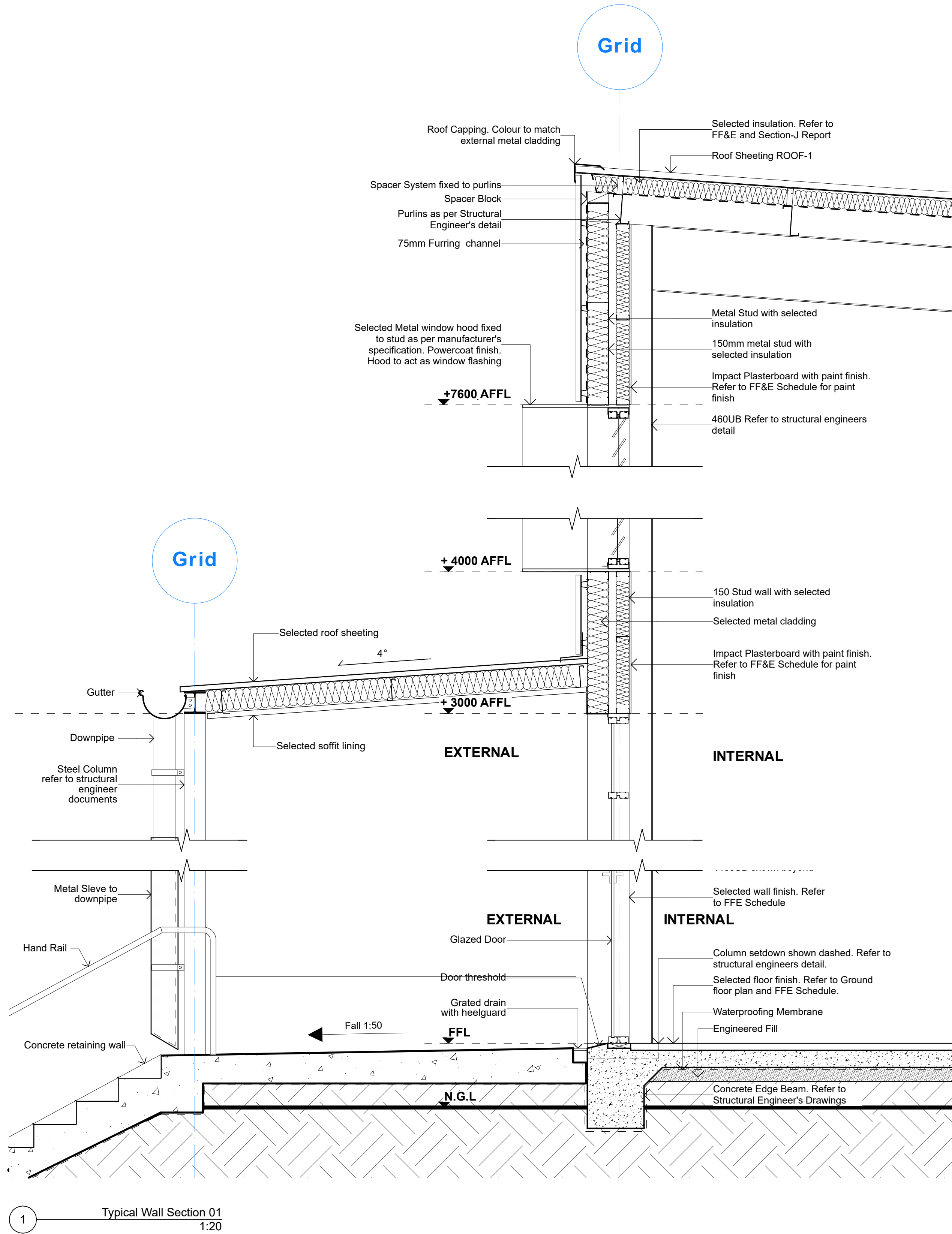
Drawn TN, GL

Project Nepean Creative and Performing Arts High School

Checked MK Status Development Application

Drawing Sections Sheet 02

Project No. 20001 Revision A Drawing No. DA301



General Notes

DO NOT SCALE FROM DRAWING. USE FIGURED DIMENSIONS ONLY. CHECK ALL DIMENSIONS ON SITE BEFORE ANY MANUFACTURE OR CONSTRUCTION

All dimensions are in millimetres unless stated otherwise.
All architectural drawings are to be read in conjunction with the relevant consultant documents. All dimensions and levels are to be checked and verified on site prior to the commencement of work, shop drawings or fabrication of any components. Refer all discrepancies to the Architect for determination. Drawings are not to be scaled, use only figured dimensions. This drawing is copyright and must not be retained, copied or used without the permission of BKA Architecture. This document has been prepared for and on behalf of the clients noted on the drawing. BKA Architecture's responsibility is to these clients only and not to any third party who may rely on these documents.

Rev

A

Date

11/12/20

Issue

Development Application

Client

SINSW



Education
School Infrastructure

Architect

BKA Architecture

SYDNEY
Suite 104,
77 Dunning Ave,
Roseberry,
NSW 2018
T: +61 2 9318 9200
E: bka@bka.com.au
W: www.bka.com.au

NEWCASTLE
19 Bolton St,
Newcastle
NSW 2300
T: +61 2 4926 5563

BYRON BAY
Unit 1,
10 Station St,
Bangalow,
NSW 2479
T: +61 2 4926 5563

Scale at A1

1:20

Date

11/12/20

North

Drawn

TN, GL

Project

Nepean Creative and
Performing Arts High School

Checked

MK

Status

Development
Application

Drawing

Details Wall Sections

Project No.

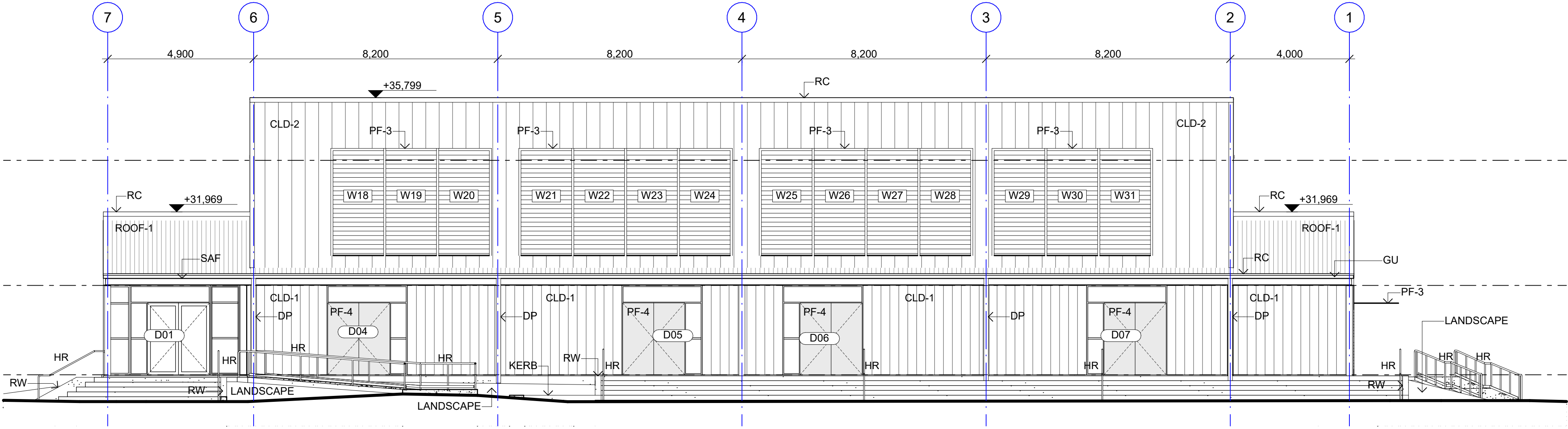
20001

Revision

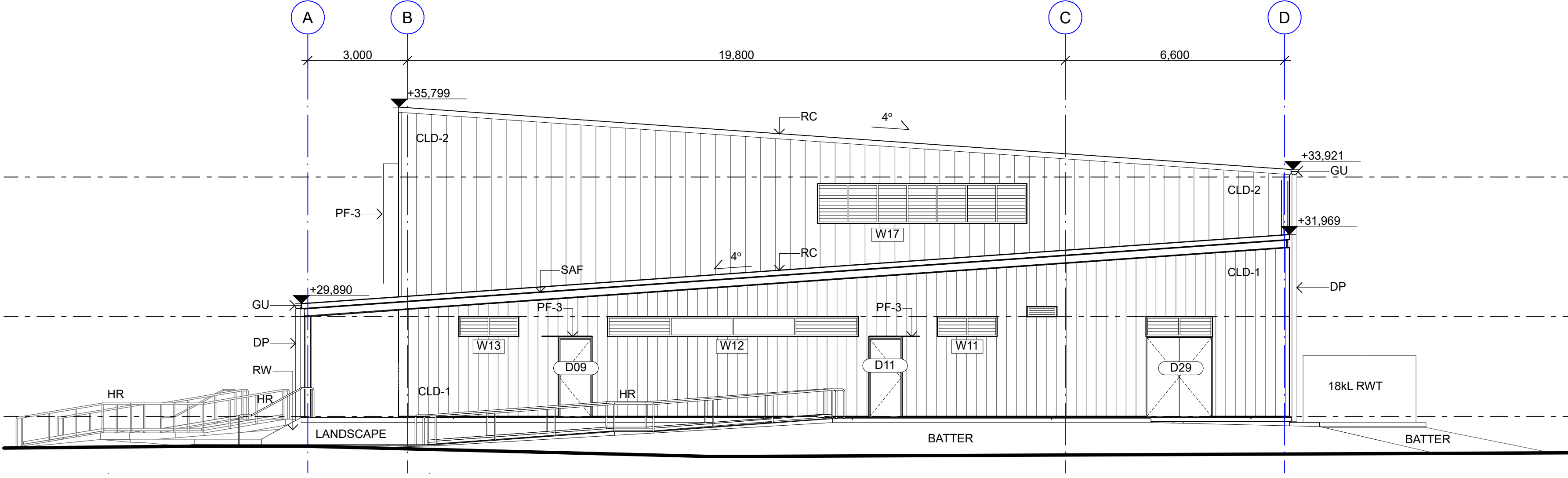
A

Drawing No.

DA450



1 North East Elevation
1:100



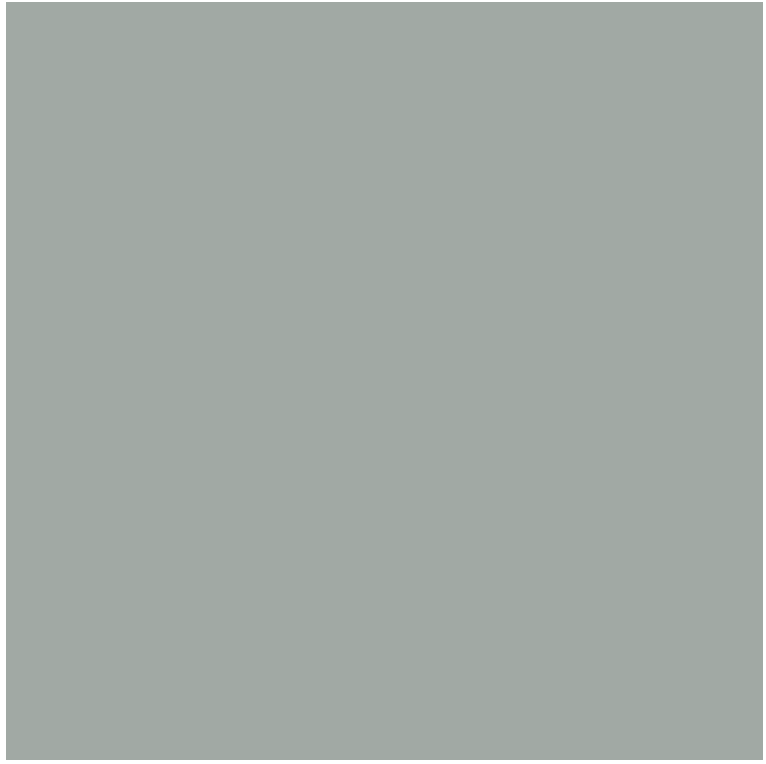
2 North West Elevation
1:100

ABBREVIATIONS

A/P: ACCESS PANEL
DP: DOWNPIPE
GD: GRATED DRAIN
GU: GUTTER
HR: HANDRAIL
HWS: HOT WATER SYSTEM
RC: ROOF CAPPING
RW: RETAINING WALL
RWT: RAIN WATER TANK
SAF: STEEL FASCIA
SC: STEEL COLUMN



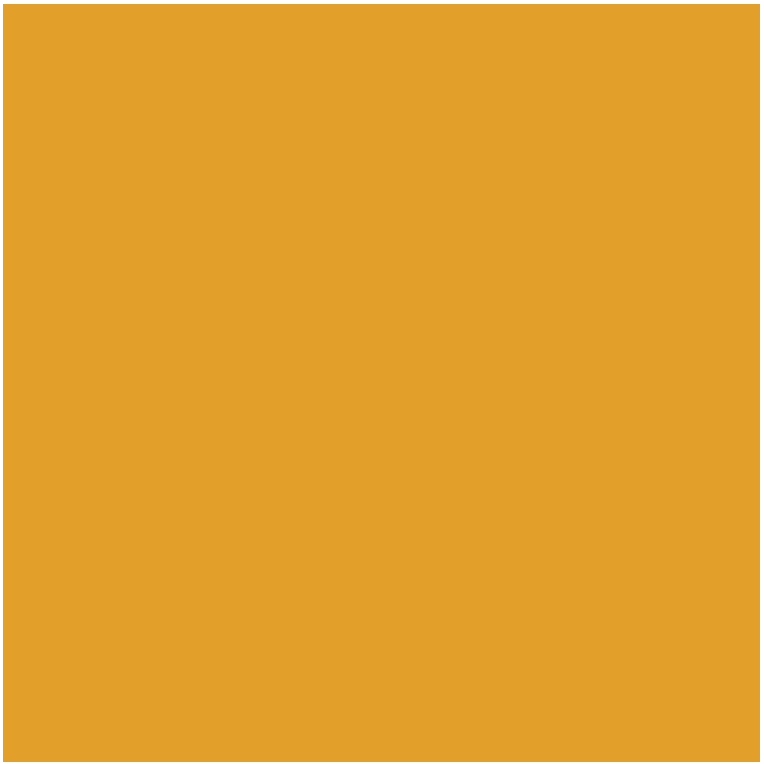
SAF
Dulux - Shale Grey



CLD-1 / CLD-2 / CLD-3 / ROOF-1 / RC / DP / GU
Colorbond - Shale Grey



PF-3
Dulux - Strap grey



PF-4
Dulux Duratec Intensity - Sunshine Gloss



CLD-1 STEEL CLADDING
Lysaght LONGLINE 305 Profile - Shale Grey



CLD-2 STEEL CLADDING
Lysaght ENSEAM Profile - Shale Grey
(Windspray pictured)



CLD-3 SOFFIT LINING
Lysaght Custom Orb Profile - Shale Grey



ROOF-1
Lysaght Klip-Lok 700 - Shale Grey

General Notes

DO NOT SCALE FROM DRAWING. USE FIGURED DIMENSIONS ONLY. CHECK ALL DIMENSIONS ON SITE BEFORE ANY MANUFACTURE OR CONSTRUCTION

All dimensions are in millimetres unless stated otherwise.

All architectural drawings are to be read in conjunction with the relevant consultant documents. All dimensions and levels are to be checked and verified on site prior to the commencement of work, shop drawings or fabrication of any components. Refer all discrepancies to the Architect for determination. Drawings are not to be scaled, use only figured dimensions. This drawing is copyright and must not be retained, copied or used without the permission of BKA Architecture. This document has been prepared for and on behalf of the clients noted on the drawing, BKA Architecture's responsibility is to these clients only and not to any third party who may rely on these documents.

Rev	Date	Issue
A	11/12/20	Development Application

Client
SINSW



Architect
BKA Architecture

SYDNEY
Suite 104,
77 Dunning Ave,
Roseberry,
NSW 2018
T: +61 2 9318 9200
E: bka@bka.com.au
W: www.bka.com.au

NEWCASTLE
19 Bolton St,
Newcastle
NSW 2300
T: +61 2 4926 5563

BYRON BAY
Unit 1,
10 Station St,
Bangalow,
NSW 2479
T: +61 2 4926 5563

Scale at A1
1:100

Date
11/12/20

North

Drawn
TN, GL

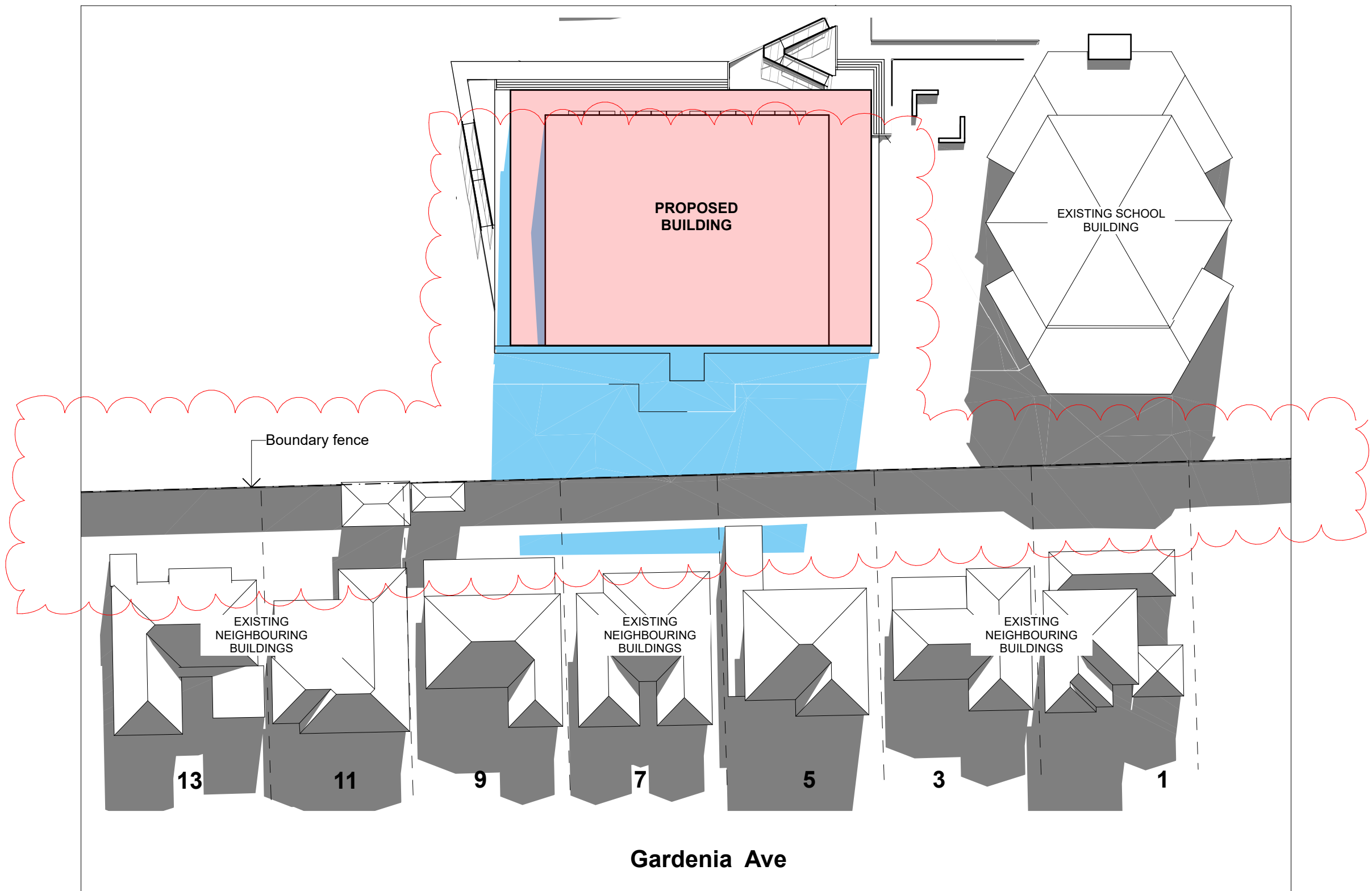
Project
Nepean Creative and
Performing Arts High School

Checked
MK

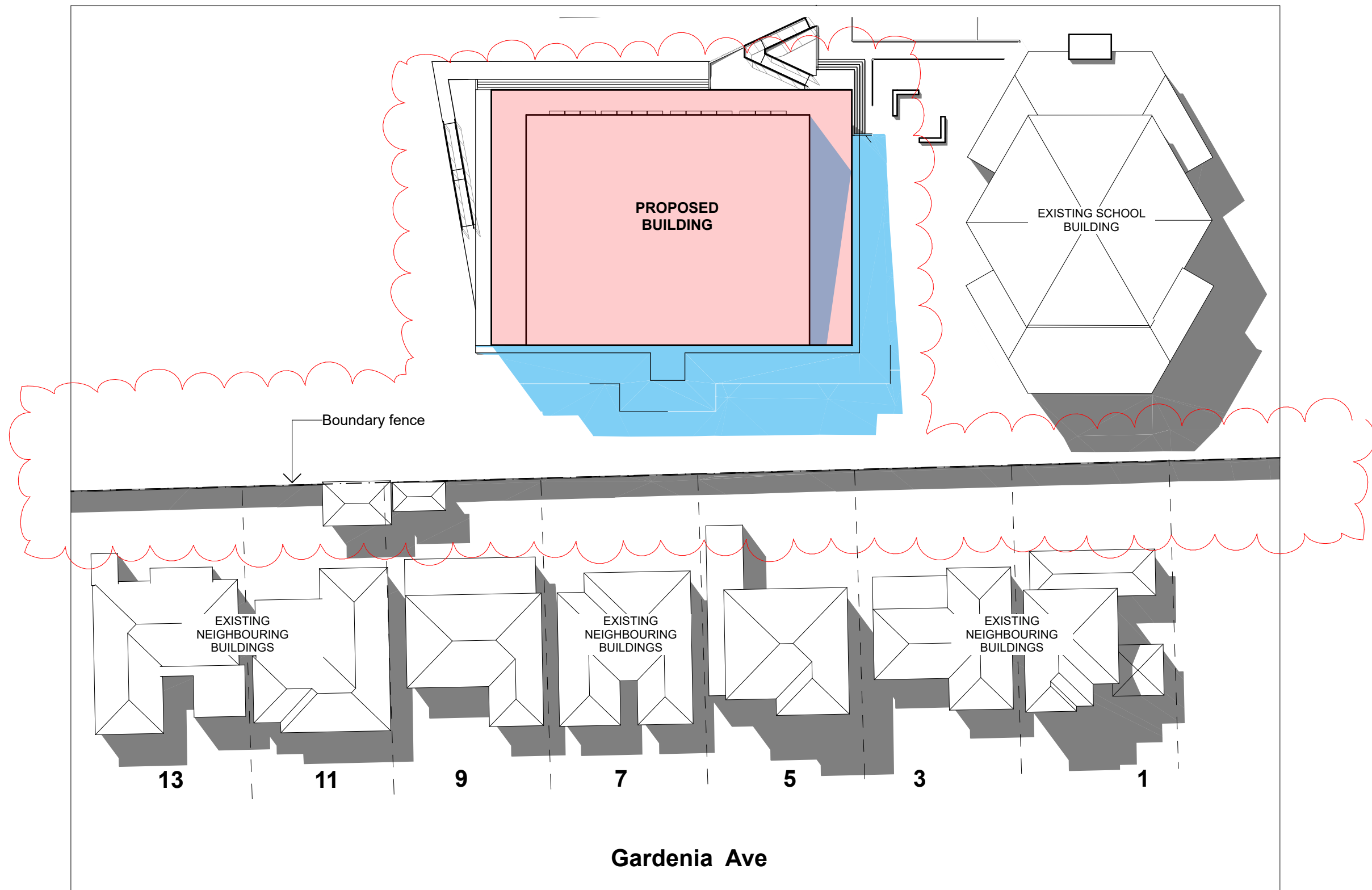
Status
Development
Application

Drawing
External Colours Scheme

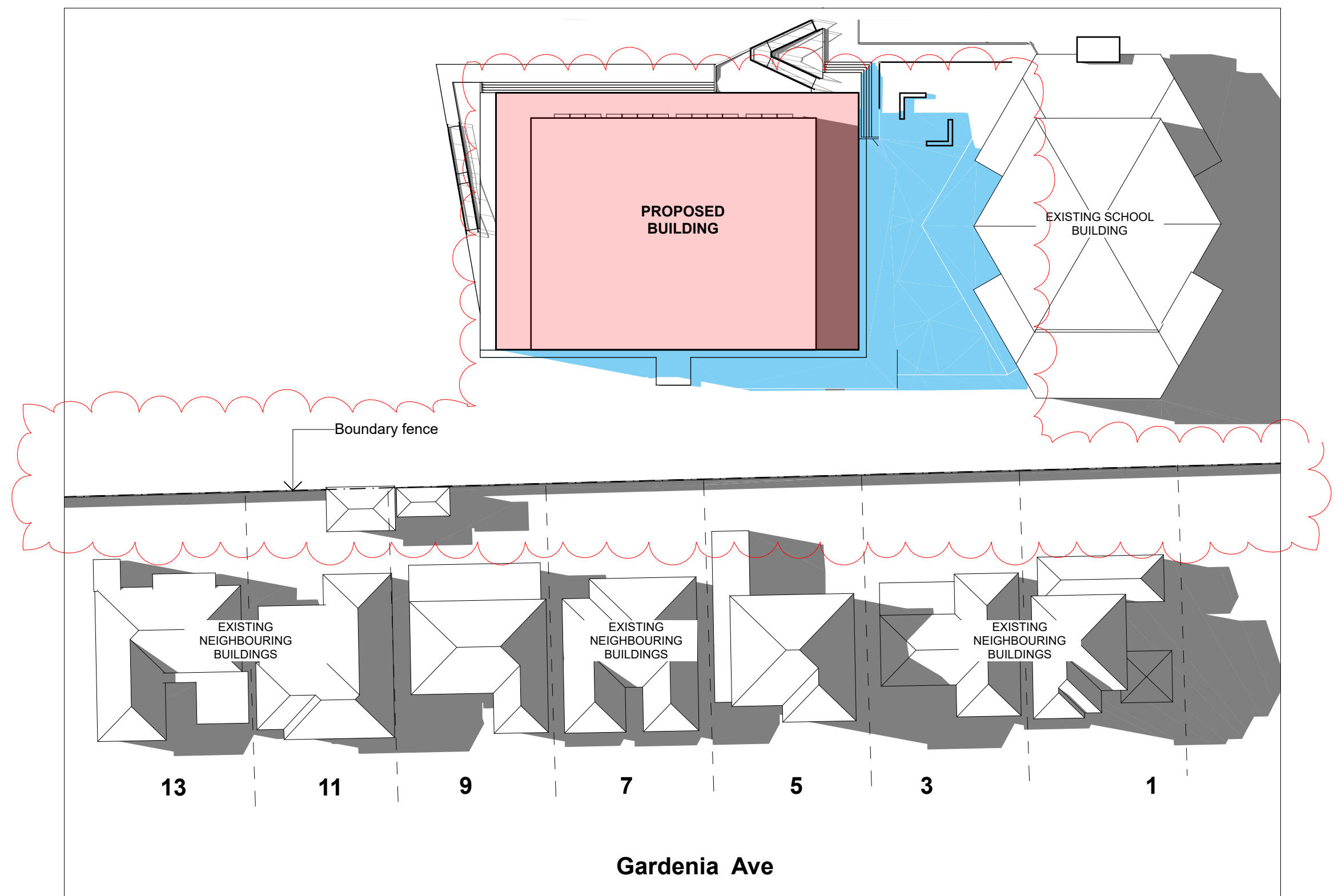
Project No.	Revision	Drawing No.
20001	A	DA700



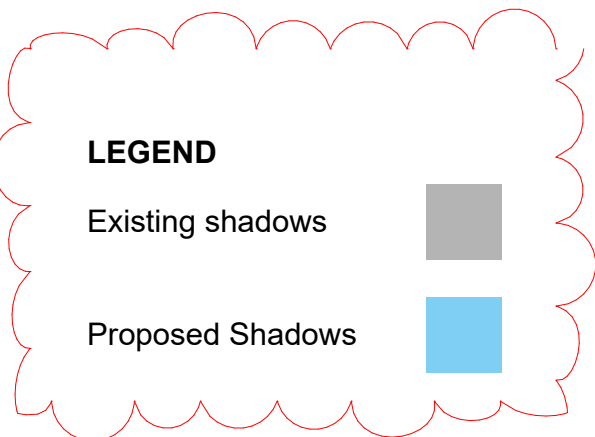
1 Winter Solstice (21 June) - 9:00 am
1:500



1 Winter Solstice (21 June) - 12:00 noon
1:500



1 Winter Solstice (21 June) - 3:00 pm
1:500



General Notes

DO NOT SCALE FROM DRAWING. USE FIGURED DIMENSIONS ONLY. CHECK ALL DIMENSIONS ON SITE BEFORE ANY MANUFACTURE OR CONSTRUCTION

All dimensions are in millimetres unless stated otherwise. All architectural drawings are to be read in conjunction with the relevant consultant documents. All dimensions and levels are to be checked and verified on site prior to the commencement of work, shop drawings or fabrication of any components. Refer all discrepancies to the Architect for determination. Drawings are not to be scaled, use only figured dimensions. This drawing is copyright and must not be retained, copied or used without the permission of BKA Architecture. This document has been prepared for and on behalf of the clients noted on the drawing, BKA Architecture's responsibility is to these clients only and not to any third party who may rely on these documents.

Rev	Date	Issue
A	11/12/20	Development Application
B	11/2/21	Additional Information

Client
SINSW



Architect

BKA Architecture

SYDNEY
Suite 104,
77 Dunning Ave,
Roseberry,
NSW 2018
T: +61 2 9318 9200
E: bka@bka.com.au
W: www.bka.com.au

NEWCASTLE
19 Bolton St,
Newcastle
NSW 2300
T: +61 2 4926 5563

BYRON BAY
Unit 1,
10 Station St,
Bangalow
NSW 2479
T: +61 2 4926 5563

Scale at A1
1:500

Date
11/2/21

North



Drawn
TN, GL

Project

Nepean Creative and
Performing Arts High School

Checked

MK

Status

Development
Application

Drawing

Shadow Diagrams

Project No.

20001

Revision

B

Drawing No.

DA800



General Notes
DO NOT SCALE FROM DRAWING. USE FIGURED DIMENSIONS ONLY. CHECK ALL DIMENSIONS ON SITE BEFORE ANY MANUFACTURE OR CONSTRUCTION

All dimensions are in millimetres unless stated otherwise.
All architectural drawings are to be read in conjunction with the relevant consultant documents. All dimensions and levels are to be checked and verified on site prior to the commencement of work, shop drawings or fabrication of any components. Refer all discrepancies to the Architect for determination. Drawings are not to be scaled, use only figured dimensions. This drawing is copyright and must not be retained, copied or used without the permission of BKA Architecture. This document has been prepared for and on behalf of the clients noted on the drawing. BKA Architecture's responsibility is to these clients only and not to any third party who may rely on these documents.

Rev	Date	Issue
A	11/12/20	Development Application

Client
SINSW



Architect
BKA Architecture

SYDNEY Suite 1.04, 77 Dunning Ave, Roseberry, NSW 2018 T: +61 2 9318 9200 E: bka@bka.com.au W: www.bka.com.au	NEWCASTLE 19 Bolton St, Newcastle NSW 2300 T: +61 2 4926 5563	BYRON BAY Unit 1, 10 Station St, Bangalow NSW 2479 T: +61 2 4926 5563
---	--	---

Scale at A1

Date
11/12/20

North

Drawn
TN, GL

Project
Nepean Creative and
Performing Arts High School

Checked MK	Status Development Application
---------------	--------------------------------------

Drawing
3D Perspective

Project No. 20001	Revision A	Drawing No. DA900
-----------------------------	----------------------	-----------------------------