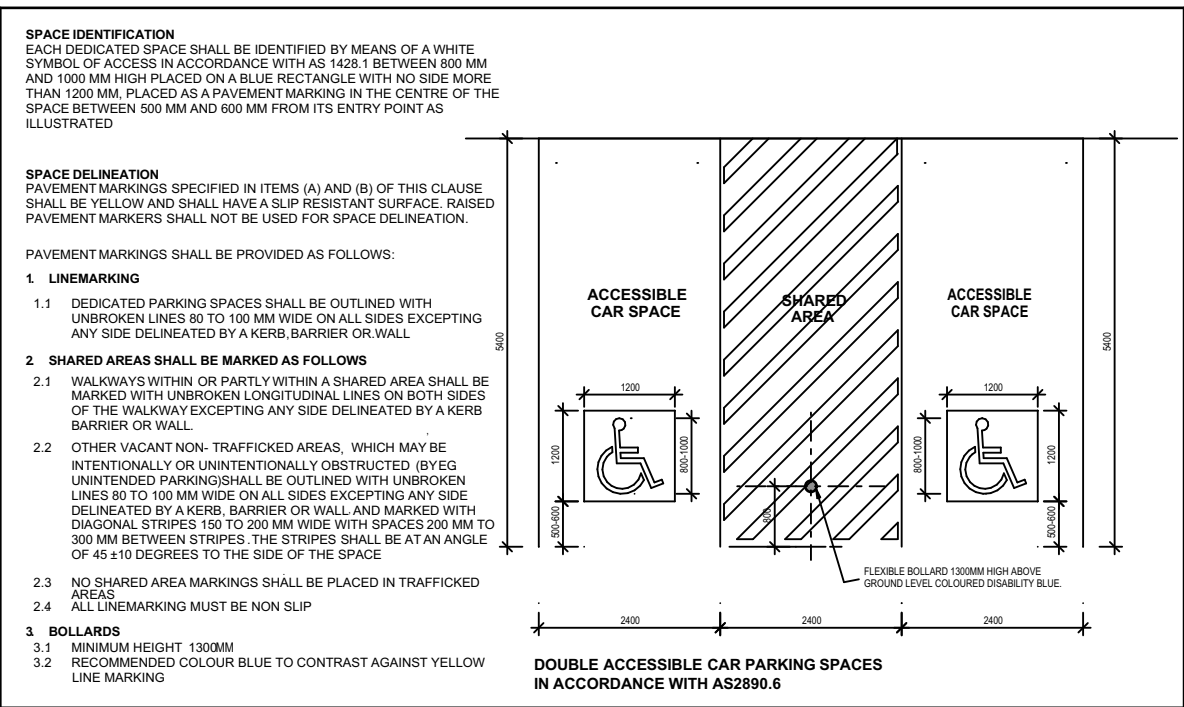
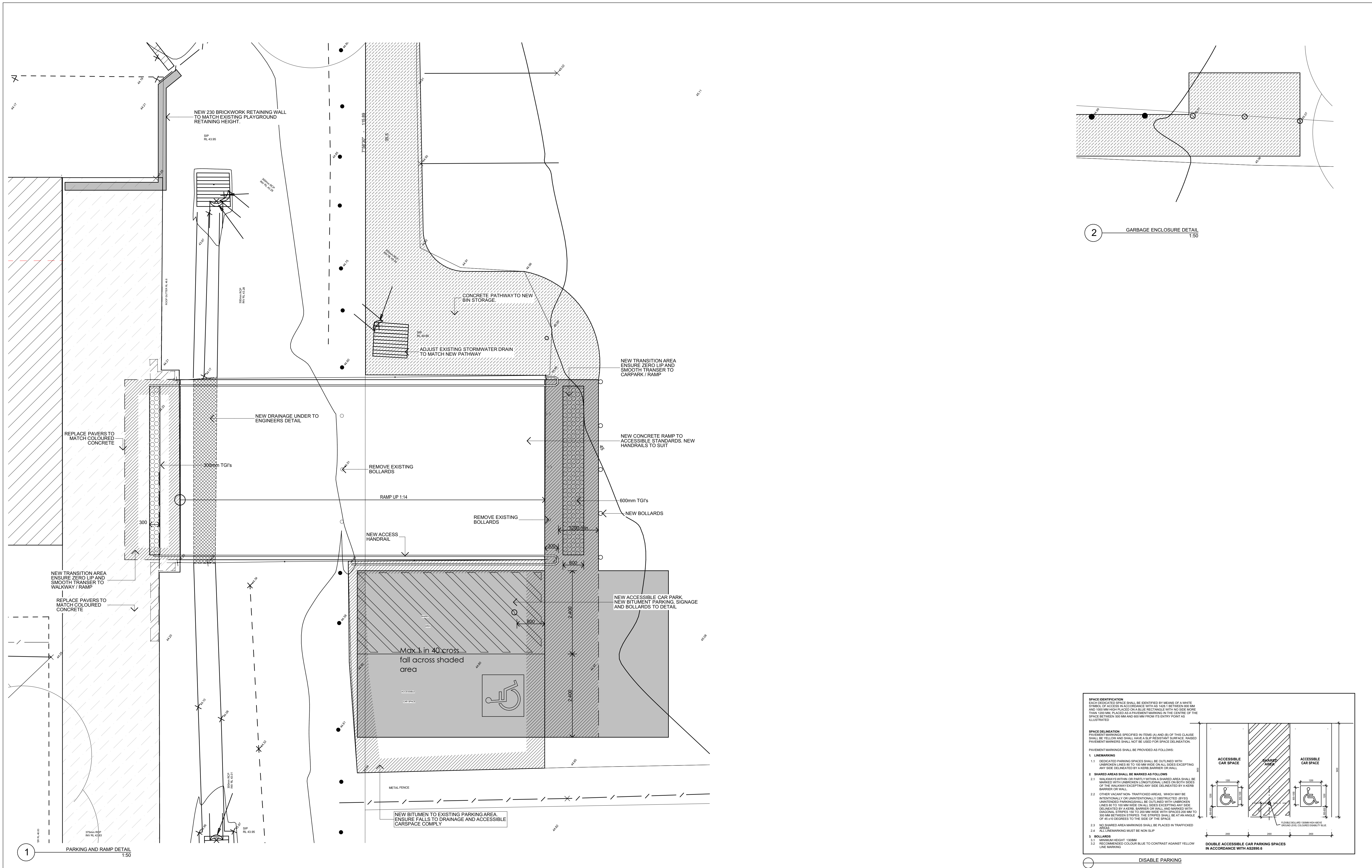
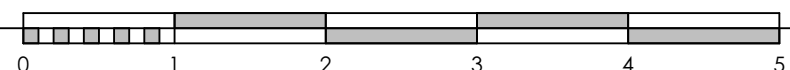


Issue		Date	Amendments																																																																																																																																																																																																																																																																																																																																																																																																																																																																																																																																																																																																																																																																																																																																																																																																																																																																																																																																																																																																																																																																																																																																																																																																																																																																																																																																																																																					</	
-------	--	------	------------	--	--	--	--	--	--	--	--	--	--	--	--	--	--	--	--	--	--	--	--	--	--	--	--	--	--	--	--	--	--	--	--	--	--	--	--	--	--	--	--	--	--	--	--	--	--	--	--	--	--	--	--	--	--	--	--	--	--	--	--	--	--	--	--	--	--	--	--	--	--	--	--	--	--	--	--	--	--	--	--	--	--	--	--	--	--	--	--	--	--	--	--	--	--	--	--	--	--	--	--	--	--	--	--	--	--	--	--	--	--	--	--	--	--	--	--	--	--	--	--	--	--	--	--	--	--	--	--	--	--	--	--	--	--	--	--	--	--	--	--	--	--	--	--	--	--	--	--	--	--	--	--	--	--	--	--	--	--	--	--	--	--	--	--	--	--	--	--	--	--	--	--	--	--	--	--	--	--	--	--	--	--	--	--	--	--	--	--	--	--	--	--	--	--	--	--	--	--	--	--	--	--	--	--	--	--	--	--	--	--	--	--	--	--	--	--	--	--	--	--	--	--	--	--	--	--	--	--	--	--	--	--	--	--	--	--	--	--	--	--	--	--	--	--	--	--	--	--	--	--	--	--	--	--	--	--	--	--	--	--	--	--	--	--	--	--	--	--	--	--	--	--	--	--	--	--	--	--	--	--	--	--	--	--	--	--	--	--	--	--	--	--	--	--	--	--	--	--	--	--	--	--	--	--	--	--	--	--	--	--	--	--	--	--	--	--	--	--	--	--	--	--	--	--	--	--	--	--	--	--	--	--	--	--	--	--	--	--	--	--	--	--	--	--	--	--	--	--	--	--	--	--	--	--	--	--	--	--	--	--	--	--	--	--	--	--	--	--	--	--	--	--	--	--	--	--	--	--	--	--	--	--	--	--	--	--	--	--	--	--	--	--	--	--	--	--	--	--	--	--	--	--	--	--	--	--	--	--	--	--	--	--	--	--	--	--	--	--	--	--	--	--	--	--	--	--	--	--	--	--	--	--	--	--	--	--	--	--	--	--	--	--	--	--	--	--	--	--	--	--	--	--	--	--	--	--	--	--	--	--	--	--	--	--	--	--	--	--	--	--	--	--	--	--	--	--	--	--	--	--	--	--	--	--	--	--	--	--	--	--	--	--	--	--	--	--	--	--	--	--	--	--	--	--	--	--	--	--	--	--	--	--	--	--	--	--	--	--	--	--	--	--	--	--	--	--	--	--	--	--	--	--	--	--	--	--	--	--	--	--	--	--	--	--	--	--	--	--	--	--	--	--	--	--	--	--	--	--	--	--	--	--	--	--	--	--	--	--	--	--	--	--	--	--	--	--	--	--	--	--	--	--	--	--	--	--	--	--	--	--	--	--	--	--	--	--	--	--	--	--	--	--	--	--	--	--	--	--	--	--	--	--	--	--	--	--	--	--	--	--	--	--	--	--	--	--	--	--	--	--	--	--	--	--	--	--	--	--	--	--	--	--	--	--	--	--	--	--	--	--	--	--	--	--	--	--	--	--	--	--	--	--	--	--	--	--	--	--	--	--	--	--	--	--	--	--	--	--	--	--	--	--	--	--	--	--	--	--	--	--	--	--	--	--	--	--	--	--	--	--	--	--	--	--	--	--	--	--	--	--	--	--	--	--	--	--	--	--	--	--	--	--	--	--	--	--	--	--	--	--	--	--	--	--	--	--	--	--	--	--	--	--	--	--	--	--	--	--	--	--	--	--	--	--	--	--	--	--	--	--	--	--	--	--	--	--	--	--	--	--	--	--	--	--	--	--	--	--	--	--	--	--	--	--	--	--	--	--	--	--	--	--	--	--	--	--	--	--	--	--	--	--	--	--	--	--	--	--	--	--	--	--	--	--	--	--	--	--	--	--	--	--	--	--	--	--	--	--	--	--	--	--	--	--	--	--	--	--	--	--	--	--	--	--	--	--	--	--	--	--	--	--	--	--	--	--	--	--	--	--	--	--	--	--	--	--	--	--	--	--	--	--	--	--	--	--	--	--	--	--	--	--	--	--	--	--	--	--	--	--	--	--	--	--	--	--	--	--	--	--	--	--	--	--	--	--	--	--	--	--	--	--	--	--	--	--	--	--	--	--	--	--	--	--	--	--	--	--	--	--	--	--	--	--	--	--	--	--	--	--	--	--	--	--	--	--	--	--	--	--	--	--	--	--	--	--	--	--	--	--	--	--	--	--	--	--	--	--	--	--	--	--	--	--	--	--	--	--	--	--	--	--	--	--	--	--	--	--	--	--	--	--	--	--	--	--	--	--	--	--	--	--	--	--	--	--	--	--	--	--	--	--	--	--	--	--	--	--	--	--	--	--	--	--	--	--	--	--	--	--	--	--	--	--	--	--	--	--	--	--	--	--	--	--	--	--	--	--	--	--	--	--	--	--	--	--	--	--	--	--	--	--	--	--	--	--	--	--	--	--	--	--	--	--	--	--	--	--	--	--	--	--	--	--	--	--	--	--	--	--	--	--	--	--	--	--	--	--	--	--	--	--	--	--	--	--	--	--	--	--	--	--	--	--	--	--	--	--	--	--	--	--	--	--	--	--	--	--	--	--	--	--	--	--	--	--	--	--	--	--	--	--	--	--	--	--	--	--	--	--	--	--	--	--	--	--	--	--	--	--	--	--	--	--	--	--	--	--	--	--	--	--	--	--	--	--	--	--	--	--	--	--	--	--	--	--	--	--	--	--	--	--	--	--	--	--	--	--	--	--	--	--	--	--	--	--	--	--	--	--	--	--	--	--	--	--	--	--	--	--	--	--	--	--	--	--	--	--	--	--	--	--	--	--	--	--	--	--	--	--	--	--	--	--	--	--	--	--	--	--	--	--	--	--	--	--	--	--	--	--	--	--	--	--	--	--	--	--	--	--	--	--	--	--	--	--	--	--	--	--	--	--	--	--	--	--	--	--	--	--	--	--	--	--	--	--	--	--	--	--	--	--	--	--	--	--	--	--	--	--	--	--	--	--	--	--	--	--	--	--	--	--	--	--	--	--	--	--	--	--	--	--	----	--



Issue	Date	Amendments
A	25/05/2021	ISSUED FOR APPROVAL
B	11/08/2021	ISSUED FOR APPROVAL

SCALE 1:50 @A1
SCALE 1:100 @A3



NOTES

Structural engineering as required for all structural works, including paths, slabs, new walls, roof, columns, beams.

Refer to Access report for accessibility requirements.
Refer to Specifications.

NOTE - tempering valves to all hot water provisions. Backflow valves required next to all wash down hoses next to sluices, irrigation systems etc.

PENRITH
CITY COUNCIL

Client

Penrith City Council
601 High Street Penrith

Project

Cook Parade Child Care Centre
41 Cook Parade St Clair NSW 2760

Stage

Development Application

Drawing Title
SITE PLAN DETAILS

Drawing No.

200203 - A002

Date

05/05/21

Drawn by

WLM

Original Sheet size

A1

Project No.

200505

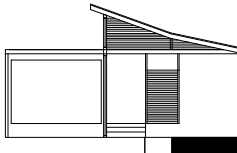
Issue

B

PO Box 32 Kurrajong NSW 2758
p 02 4573 1320
e barbara@btarchitects.com.au
www.btarchitects.com.au

Barbara Tarnawski Architects Pty Ltd

CHECK ALL DIMENSIONS ON SITE.
REFER ANY DISCREPANCIES TO THE ARCHITECT BEFORE PROCEEDING WITH THE WORKS



Item	Manufacturer	Product Number / Model Number	Details	Finishes /	Notes
GENERAL					
Floor - Tiles (carpet)	Tarkett	Essence Structure Probase B399-9503 710400010		Medium Grey	
Floor - Vinyl (Wood Look)	Tarkett	Accent Ruby - Oak Grey - 25098036		Grey Oak	
Door - Electronic Door Opener with Biometric Control	Argus Global	MPH-MFV-BIO (IP65 finger vein access device), MPH-MSO-x10 (fingert vein desktop enrolment unit), MPH-SW-MGR (software), ARG-PS-ENG (professional Services)	MPH-MFV-BIO (IP65 finger vein access device), MPH-MSO-x10 (fingert vein desktop enrolment unit), MPH-SW-MGR (software), ARG-PS-ENG (professional Services)		Biometrics Finger Print Technology for main entry door, allow for CAT 5 cabling
Door - Gates (front)	Penrith Wrought Iron		Double gate front entry setup with pool latch auto close		
Window - Blinds	Riverland	Roller Blind			Colour to suit centre
Window - security screen	Vandal Proof Mesh				Provide antivandal screws rather than propriety system
Skirting-aluminium flat	Brushed Aluminium Skirting		to hallways and traffic areas to prevent damage to traditional timber skirting		
Skirting - aluminium ducted	Skitec	35x150mm - Anodised Aluminium	3xchannel		
Wall - Corner Protection		Clear Corner Edge Protection Strips			secured to all corners in high traffic areas to prevent damage to walls and paintwork
Playroom Gates		Pool fence type gate 1.2m high			
External - Decking	Modwood	90x19mm			frame built to code in all H4 treated pine timber
External - Tiles					
Painting - Ceiling				Ceiling white - colour - white, finish - matt	
Painting - Walls	Dulux	Wash and wear- Low Sheen		Colour - Hogs Bristle 1/2	
Painting - Timber	Dulux	High enamel gloss		Colour - 30% difference to wall colour	
Walls Internal sheeting below chair rail	James Hardie	Scyon Axon Cladding - Product Number - 404419 (9mm thick 400mm wide grooved sheet smooth finish)	To be installed on the lower section of the wall to 1000mm high, this will prevent damage in the future and to be painted with semi gloss paint for easy cleaning.		
Chair Rail	Porta	1N 81319 - 40x8mm Tasmanian Oak Round Edge Coverstrap Moulding	Round edge moulding for chair rail, can use similar moulding with rounded edges but must be hardwood		
Cupboards		16mm laminate cupboards white with 2mm PVC edge strip	Adjustable shelving. Upper cupboards to have bulkhead to ceiling where possible	Chauk White cabinets, brook pebble Cabinet tops	Pencil round edge to all general joinery. Office joinery is all in select beech. Allow for 2mm PVC impact resistant PVC edging and any shelving over 900 wide to be 25mm thick.
Cupboard door and drawer handles	Prestige	192mm SCP0932036			
Cupboard hinges					
Drawer runners					
BATHROOM					
Soap Dispenser	Dispenser Washroom Instant Foam	IFS1LDS			
Hand Sanitiser	Deb Stoko Sanitiser	SAN1LDS			
Paper Towel Dispenser	Interleaved	DIS1005			
Toilet Paper Dispenser	Livi	5502 - Twin Toilet Roll Dispenser Side by Side			
Taps Basin Set	Posh	9502222 - Bristol Basin Lever Set			Basin Set Lever Ceramic Disc
Childrens Toilet Closed Couple Wall Faced	Caroma	766630W - Liano Junior Cleanflush Wall Faced Toilet Suite			To be installed on silicon with a silicon joint installed around the pan and cisten and between the pan and cisten connection
Floor	Teraflake	Teraflake Epoxy Floor Coating	150mm coved epoxy floor coating	grey	
Wall Tiling		White 400x200mm ceramic tiles		white	
Sleuth	Caroma	618320W			
Mirror		aluminium framed mirror size to suit application			
Hydraulic Nappy Change	Reflex	SKU: RE KUBAC	easy push button battery operated scissor lift system nappy change table.		
Basin Wall Mounted	Porcher	Studio Wall Basin 350mm - Single Hole flick mixer			
KITCHEN					
Benchtop	Various		Stainless Steel Benchtops 33mm particleboard substrate with coved 140mm splash back to plywood backing to continue from benchtop surface to wall with no joints		
Cupboards	Various	16mm laminate cupboards white with 2mm PVC edge strip			Upper cupboards to have bulkhead to ceiling where possible - Colour: White
Plinth			150mm, solid construction (concrete filled)		
Drawers					
Cupboard and drawer handles					
Cupboard hinges		ms			
Drawer hinges					
Hand Wash Basin	Clark	Orion main bowl overmount			
Double Bowl Sink	Clark	Orion double bowl overmount			
Tap Single Bowl	Enware	SLM606D	single lever basin mixer with extended lever handle		to be used on hand wash basin
Tap Double Bowl	Enware	SLM607D	single lever basin mixer with extended lever handle		to be used on kitchen sink
Wall Tiling		White 400x200mm ceramic tiles	Epoxy grout	white	
Oven	Westinghouse	WVE915SB	900mm under bench over		
Dishwasher	Eswood	ES25	pass through dishwasher		
Cooktop	Westinghouse	WHC942BC	900mm electric ceramic cooktop		
Fridge / Freezer	Westinghouse	WSE6200SA	620L Side by Side		
Fridge	Westinghouse	WRB5004SA	501L upright fridge		
Rangehood	Fisher & Paykel	HC120DCXB3	1200mm wall chimney box rangehood		
Microwave	Westinghouse	WMS281SF	900w		
Freezer	Westinghouse	WFB4204SA	425L verticle freezer		
Kitchen Floor	Tarkett	R11 Slip Rated Vinyl	R11 Slip Rated Commercial Hot weld colour to match with vinyl coved min 25m radius in corners and continue up wall 150mm. Cove to have a preformed backing piece. Colour: Grey		

GENERAL ACCESS SPECIFICATIONS 20074 C					
Applies to New areas, modified areas and areas within the affected path (ie from main entry doorways to the new and modified areas)					
All Doors:					
- Except for non-accessible sanitary facilities, all single hinged doors and in case of multiple leaf doorways, at least 1 operable leaf is required to provide a clear opening of 850mm with the door circulations spaces as per AS1428.1-2009. - When using sliding doors / bifold doors, flush transition is required so provide fully recessed floor tracks. Also, all sliding doors to have 530mm minimum available to latch side of the sliding door to enable access to door handle. - All glazed doors and other glazed areas to have glazing strips. The marking should be for the full width with a solid and non-transparent 75mm wide, contrasting line located 900-1000mm above FFL and provide a minimum luminance contrast of 30% when viewed against the floor surface within 2M of the glazing on the opposite end. Graphical representation or cut-outs are not permitted. - All doorways to have a minimum luminance contrast of 30% provided between, Door leaf and door jamb or Door leaf and adjacent wall or Architrave and wall or Door leaf and architrave or Door jamb and adjacent wall. The minimum width of the luminance contrast to be 50mm. - All external doorways can either have flush door thresholds or can have a max drop of 35mm at threshold when used in combination with a doorway threshold ramp of 1:8 grade within 20mm of the door leaf.					
Door hardware requirements:					
- D shaped door handles to be used, located at 900-1100mm above FFL - Clearance between the handle and the back plate or the door face at the center grip section of the handle to be between 35-45mm with a minimum of 20mm turn at the end of the handle - Use either Lockwood or KABA commercial joinery – mortice locks where required with cylinder allowance to suit existing council abloy locks					
All stairways require the following:					
- All stairways to be compliant with: AS1428.1-2009, including but not limited to opaque risers, with 1M clear space (handrail to handrail /wall) - Each tread to have a nosing strip between 50mm-75mm for the full width of the stair, which can be setback for a maximum of 15mm from the front of the nosing. This strip is to have a minimum luminance contrast of 30% to the background and to comply with any change in level requirements if attached on the treads. - Handrails to be located between 865mm-1000mm above FFL, with no vertical sections. Diameter of handrails to be between 30mm-50mm and located not less than 50mm from adjacent walls with no obstructions to top 270° arc. - Slip resistance to also comply with BCA Table D2.14 when tested in accordance with AS4586. For treads and landings, slip resistance of R11 / P4 and for nosing strips slip resistance of P4 should be provided when tested as per AS4586.					
In addition to the above all non-fire-isolated stairways require the following:					
- Handrails to be provided to both sides and to extend a minimum of 300mm horizontally past the nosing on the top riser. At the bottom of the stairs the handrail is to extend at least one tread depth parallel to the line of the nosing, plus a minimum of 300mm horizontally from the last riser.					
All 1:20 walkways require the following					
- For 1:20 grade walkways, 1.2M length (in direction of travel) landings are required every 15M. - The floor surface abutting the sides of the walkway to be provided with a firm and level surface (of a different material) at the same level and grade of the walkway and extend horizontally for a minimum of 600mm unless one of the following is provided: kerb, kerb-rail and handrail or wall of minimum 450mm height.					
Braille / Tactile Signage as per BCA requirements to be provided to:					
- All doors nominated as Exit doors require signage - All Sanitary Facilities and airlocks to sanitary facilities including accessible and ambulant toilets require signage - All non-accessible entry points from the site boundary require signage with arrow pointing towards the accessible entry.					
TGSIs are required in the following locations (only to non-fire-isolated stairways and ramps):					
- At top and bottom landings, 600-800mm depth or min 12 discrete cones are required at 300+/-10mm from edge of hazard (unless the landings are less than 3M, in which case, provide 300mm depth) - At mid landings, 300-400mm depth or min 6 discrete cones are required only where handrails are not continuous or landing or if landing is less than 3M.					
Compliance is required with AS1428.4.1. Luminance contrast requirements of TGSIs are to be as listed below.					
- Integrated TGSIs require min of 30%. Discrete TGSIs require min of 45% - Discrete with 2 colours require the raised surface to have a min of 60%					
Floor or ground surfaces					
- The texture of the surface is to be traversable by people who use a wheelchair and those with an ambulant or sensory disability. - Abutment of surfaces is to have a smooth transition (this includes door thresholds of accessible sanitary facilities). - Construction tolerances to be +/- 3mm vertical or +/-5mm (provided the edges have a bevelled or rounded edge). - Grates (if used in the accessible path of travel) are required to comply with AS1428. 1.					
Accessible Car parking to fully comply with AS2890.6, including the following:					
- Dedicated space 2.4Mx5.4M, Shared space 2.4Mx5.4M to be at the same level - Slip resistant flooring surface with maximum fall 1:40 in any direction or maximum 1:33 if bituminous and outdoors - Central Bollard in shared space at 800+/-50mm from entry point - Pavement marking in dedicated space by means of access symbol between 800mm-1000mm high placed on a blue rectangle of maximum 1200mm and between 500mm-600mm from its entry point (marking not required where allocated to an Adaptable unit) - Minimum headroom of 2.2M at entrances and 2.5M is required over shared zones as well as dedicated spaces - Non-trafficked area of the shared space to have yellow marking strips at 45°, 150-200mm wide at 200mm-300mm spaces - The pavement marking shall have the appropriate slip resistance for the location.					
Slip resistance requirements:					
- Slip resistance to be as per BCA Table D2.14 when tested in accordance with AS4586. - Refer to guide HB 197/198 for details in regards to compliance requirements.					
Accessible toilet:					
- The Accessible toilet to be constructed as per requirements of AS1428.1-2009 - Setout of pan to be 800+/-10mm from rear wall and the c/l of pan is to be 450-460mm from side wall. Top of seat of WC pan is to be 460-480mm above FFL - The top of the washbasin is to be between 800-830mm above FFL. Water taps to be lever or sensor with 50mm clear from any surface - Seat to be full round, take 150kg weight and provide 30% luminance contrast to the background - Backrest to be 150-200mm height, 350-400mm width and 120-150mm above the seat at an angle of 95°-100° back from seat hinge - Flushing control to be proud of surface and located between 600-1100mm above FFL at back or side wall, clear of grabrail area - Top of toilet paper dispenser is to be located maximum of 700mm above FFL and maximum of 300mm from edge of pan - Grabrails, 30-40mm diameter, placed 50-60mm clearance from wall, with no obstructions to top 270° arc, are to be provided to rear and side wall (90° or 30° - 45°). Horizontal component to be 800-810mm above FFL. Fastenings and construction of grabrails to be capable to withstand 1100N of force. - Mirror to start from 900mm above FFL, till minimum of 1850mm above FFL - Clothes hanging device to be at height of 1200-1350mm above FFL and at least 500mm from any internal corner - Shelf to be 300-400mm length and 120-150mm wide and located 900-1000mm above FFL - Soap and paper towel dispensers where provided, to be installed with height of the operative component between 900-1100mm above FFL and no closer than 500mm from an internal corner.					
- Door to the Accessible toilet requires AS1428.1 compliant door circulation spaces. When door swings next to the washbasin a clear 300mm is required between the door swing and the washbasin.					
Accessible Shower:					
Showers for Accessible use are to be designed in accordance with AS1428.1.					
- Flooring to be slip-resistant - Folding seat to be self-draining, slip-resistant, corners rounded to 10-15mm, fold in upwards direction and fastenings, materials and construction to be able to withstand a force of 1100N - Not less than 2 clothes hanging devices, one within 400+/-10mm and other within 600+/-10mm of the folding seat. Clothes hanging device to be at height of 1200-1350mm above FFL and at least 500mm from any internal corner - The floor of shower recess to have a floor grade between 1:60 to 1:80 and the remainder area of bathroom to be between 1:80 and 1:100 - Waste outlet to be center of the shower recess, alternatively a strip drain against the wall is also permissible. - Showerhead to be hand-held type adjustable between 1000-1800mm above FFL on shower head support rail - Water outlet for shower and back flow prevention device to be located 700mm above FFL.					

FIXTURE +FITTINGS UNISEX ACCESS WC – ALL FIXTURES AND FITTINGS MUST COMPLY WITH AS1428					
Common					
WC	Disabled toilet with closed couple cistern Caroma – Care 800 Cleanflush wall faced suite with backrest and Pedigree 11 Care single flap seat. To be installed on silicon with a silicon joint installed around the pan and cisten and between the pan and cisten connection				
HB	Caroma - Care 700 Wall Basin (873410W) Right/Left Hand Shelf (TBC on site) with Ceramic Shroud (632601)				
Tap	Basin Set Caroma - Acqua Care Basin Mixer (PC: 90989C5A)				
Grabrails	Caroma Virtu Comfort 840x700mm RH 140 deg Angle + Caroma Virtu Comfort 450mm Straight				
Soap Dispenser	by council				
Hand Sanitiser	by council				
Paper Towel Dispenser	JD MacDonald – 10-0462-AD-9: SURFACE MOUNTED PAPER TOWEL DISPENSER & WASTE BIN 7.6L - TRADITIONAL COLLECTION				
Toilet Paper Dispenser	by council				
Mirror	JD McDonald - Tempered Glass Mirror - Model No 10-0600-V1839 (460 x 990mm overall)				
Shower Set	Caroma – Virtu Plus Starsafe II Inverted T Right hand Accessible Shower Set Caroma – Skandic Shower Mixer with Diverter				
Shower	Seat Caroma – Virtu Comfort Shower Seat – 960 x 400mm				
Shower Rail	RBA 4177-120 curtain rail and curtain				

Issue	Date	Amendments			
A	25/05/2021	ISSUED FOR APPROVAL			
B	11/08/2021	ISSUED FOR APPROVAL			

NOTES

Structural engineering as required for all structural works, including paths, slabs, new walls, roof, columns, beams.

Refer to Access report for accessibility requirements.
Refer to Specifications.

NOTE - tempering valves to all hot water provisions. Backflow valves required next to all wash down hoses next to sluices, irrigation systems etc.

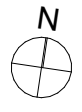
PENRITH CITY COUNCIL

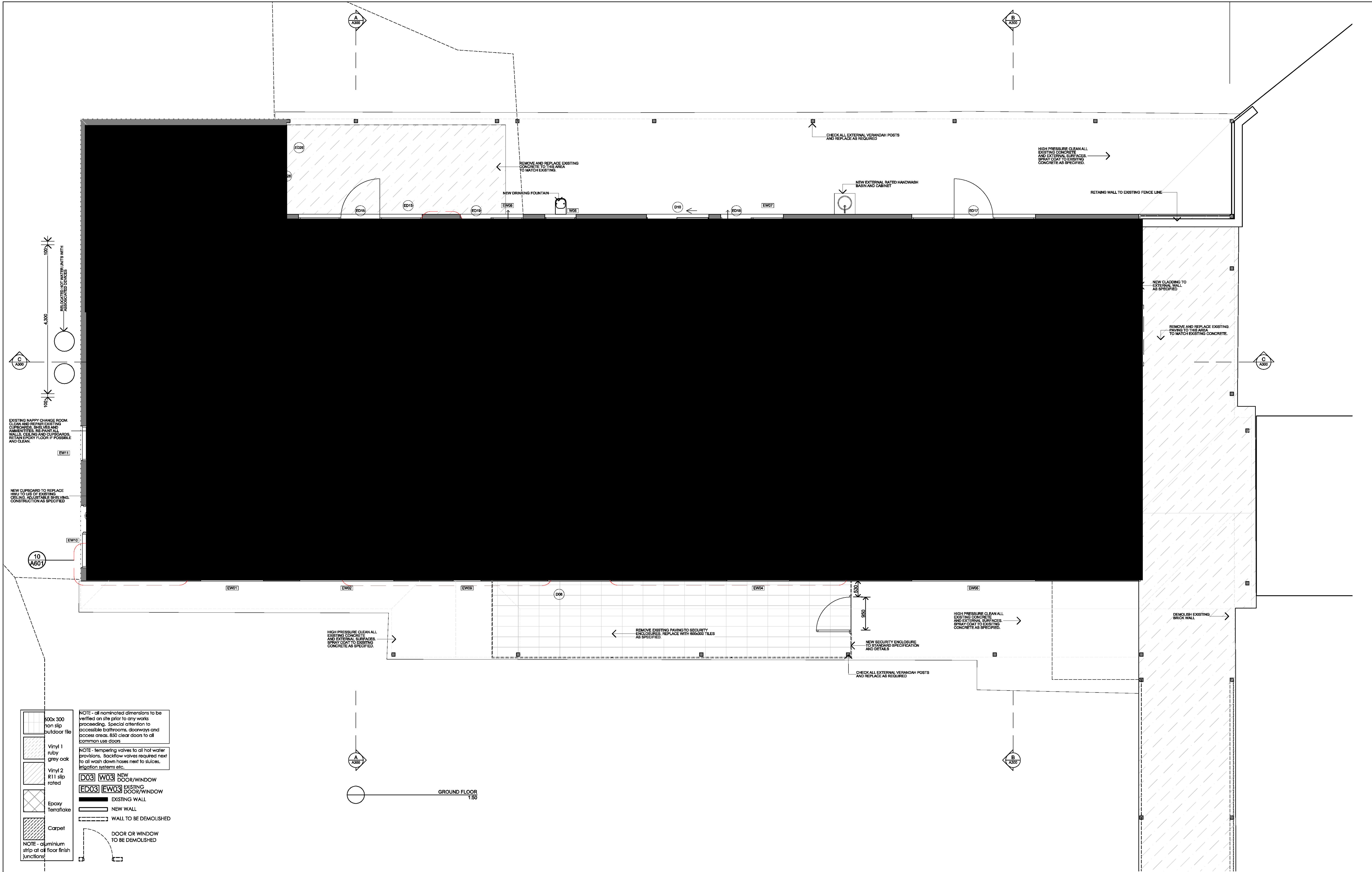
Client

Penrith City Council
601 High Street Penrith

Project

Cook Parade Child Care Centre
41 Cook Parade St Clair NSW 2760

Stage		Drawing Title		Drawing No.		Date		Drawn by		Original Sheet size		Project No.		Issue		PO Box 32 Kurrajong NSW 2758 p 02 4573 1320 e barbara@btarchitects.com.au www.btarchitects.com.au		Barbara Tarnawski Architects Pty Ltd	
Development Application		SPECIFICATION		200203 - A003		05/05/21		WLM		A1		200505		B		CHECK ALL DIMENSIONS ON SITE. REFER ANY DISCREPANCIES TO THE ARCHITECT BEFORE PROCEEDING WITH THE WORKS			



Issue	Date	Amendments
A	25/05/2021	ISSUED FOR APPROVAL
B	11/08/2021	ISSUED FOR APPROVAL

SCALE 1:50 @A1
SCALE 1:100 @A3



NOTES

Structural engineering as required for all structural works, including paths, slabs, new walls, roof, columns, beams.

Refer to Access report for accessibility requirements.
Refer to Specifications.

NOTE - tempering valves to all hot water provisions. Backflow valves required next to all wash down hoses next to sluices, irrigation systems etc.

PENRITH CITY COUNCIL

Client

Penrith City Council
601 High Street Penrith

Project

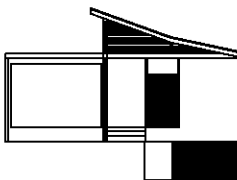
Cook Parade Child Care Centre
41 Cook Parade St Clair NSW 2760

Stage	Drawing Title	Drawing No.	Date	Drawn by	Original Sheet size	Project No.	Issue
Development Application	GROUND FLOOR PLAN	200203 - A102	05/05/21	WLM	A1	200505	B

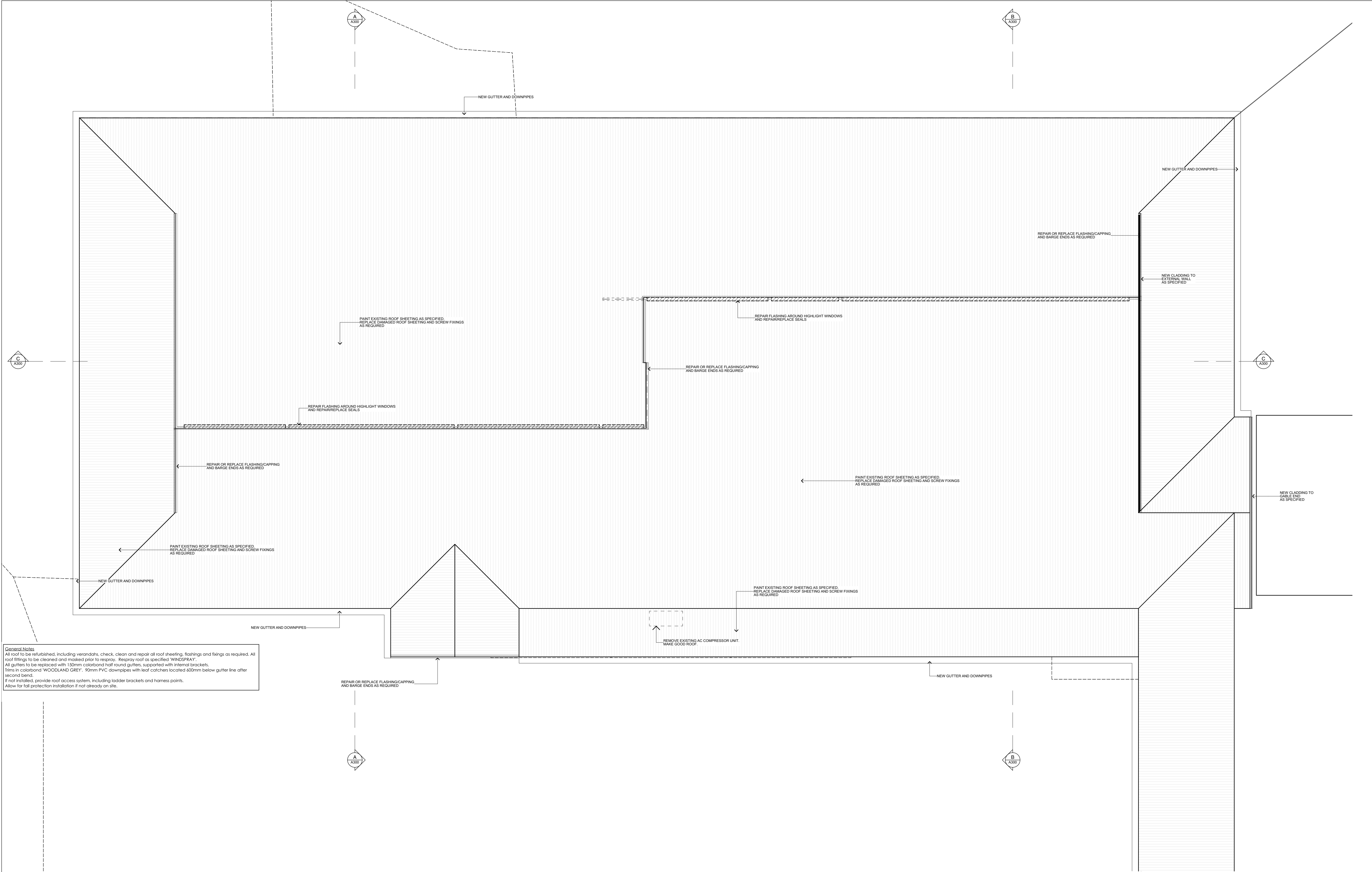


PO Box 32 Kurrajong NSW 2758
p 02 4573 1320
e barbara@btarchitects.com.au
www.btarchitects.com.au

Barbara Tarnawski Architects Pty Ltd

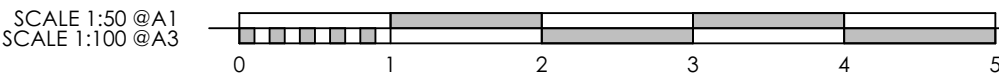


CHECK ALL DIMENSIONS ON SITE.
REFER ANY DISCREPANCIES TO THE ARCHITECT BEFORE PROCEEDING WITH THE WORKS



General Notes
All roof to be refurbished, including verandahs, check, clean and repair all roof sheeting, flashings and fixings as required. All roof fittings to be cleaned and masked prior to respray. Respray roof as specified "WINDSPRAY".
All gutters to be replaced with 150mm colorbond half round gutters, supported with internal brackets.
Trims in colorbond "WOODLAND GREY". 90mm PVC downpipes with leaf catchers located 400mm below gutter line after second bend.
If not installed, provide roof access system, including ladder brackets and harness points.
Allow for fall protection installation if not already on site.

Issue	Date	Amendments
A	25/05/2021	ISSUED FOR APPROVAL
B	11/08/2021	ISSUED FOR APPROVAL



NOTES
Structural engineering as required for all structural works, including paths, slabs, new walls, roof, columns, beams.

Refer to Access report for accessibility requirements.
Refer to Specifications.

NOTE - tempering valves to all hot water provisions. Backflow valves required next to all wash down hoses next to sluices, irrigation systems etc.

PENRITH CITY COUNCIL
Client
Penrith City Council
601 High Street Penrith

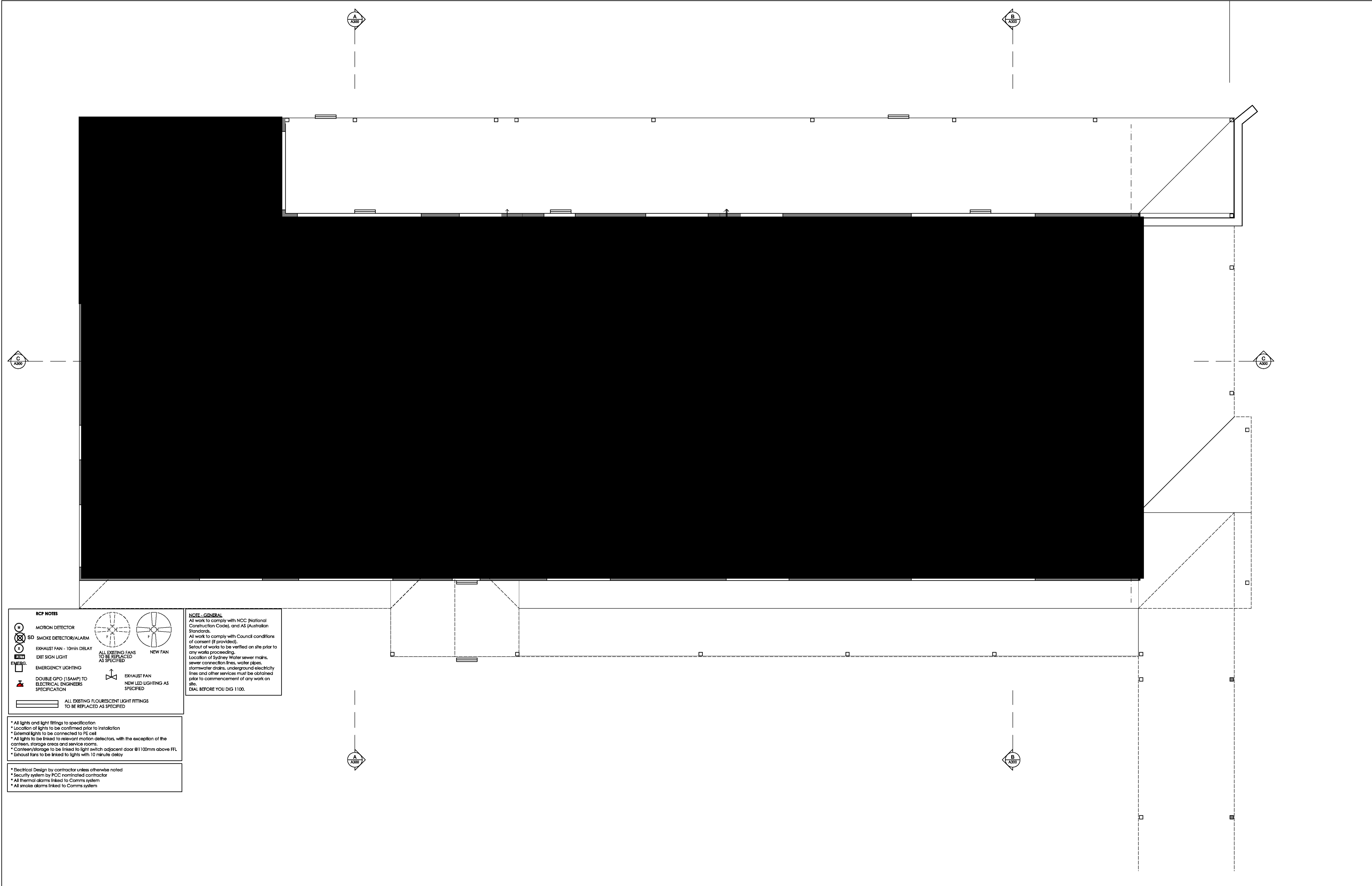
Project
Cook Parade Child Care Centre
41 Cook Parade St Clair NSW 2760

Stage Development Application	
Drawing Title ROOF	
Drawing No. 200203 - A103	
Date 05/05/21	Drawn by WLM
Original Sheet size A1	Project No. 200505
Issue B	

PO Box 32 Kurrajong NSW 2758
p 02 4573 1320
e barbara@btarchitects.com.au
www.btarchitects.com.au

Barbara Tarnawski Architects Pty Ltd

CHECK ALL DIMENSIONS ON SITE.
REFER ANY DISCREPANCIES TO THE ARCHITECT BEFORE PROCEEDING WITH THE WORKS



RCP NOTES

- MOTION DETECTOR
- SD SMOKE DETECTOR/ALARM
- EXHAUST FAN - 10min DELAY
- EXIT SIGN LIGHT
- EMERG. LIGHTING
- DOUBLE GPO (115AMP) TO ELECTRICAL ENGINEERS SPECIFICATION
- ALL EXISTING FLOURESCENT LIGHT FITTINGS TO BE REPLACED AS SPECIFIED

ALL EXISTING FANS TO BE REPLACED AS SPECIFIED

NEW FAN

EXHAUST FAN NEW LED LIGHTING AS SPECIFIED

- * All lights and light fittings to specification
- * Location of lights to be confirmed prior to installation
- * External lights to be connected to PE cell
- * All lights to be linked to relevant motion detectors, with the exception of the canteen, storage areas and service rooms.
- * Canteen/storage to be linked to light switch adjacent door @1100mm above FFL
- * Shoutout fans to be linked to lights with 10 minute delay

- * Electrical Design by contractor unless otherwise noted
- * Security system by PCC nominated contractor
- * All thermal alarms linked to Comms system
- * All smoke alarms linked to Comms system

NOTE - GENERAL
All work to comply with NCC (National Construction Code), and AS (Australian Standards).
All work to comply with Council conditions of consent (if provided).
Setout of works to be verified on site prior to any works proceeding.
Location of Sydney Water sewer mains, sewer connection lines, water pipes, stormwater drains, underground electricity lines and other services must be obtained prior to commencement of any work on site.
DIAL BEFORE YOU DIG 1100.

NOTES

Structural engineering as required for all structural works, including paths, slabs, new walls, roof, columns, beams.

Refer to Access report for accessibility requirements.
Refer to Specifications.

NOTE - tempering valves to all hot water provisions. Backflow valves required next to all wash down hoses next to sluices, irrigation systems etc.

PENRITH CITY COUNCIL

Client
Penrith City Council
601 High Street Penrith

Project

Cook Parade Child Care Centre
41 Cook Parade St Clair NSW 2760

Stage

Development Application

Drawing Title
GROUND FLOOR RCP

Drawing No.
200203 - A200

Date
05/05/21

Drawn by
WLM

Original Sheet size
A1

Project No.
200505

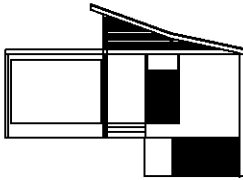
Issue
B

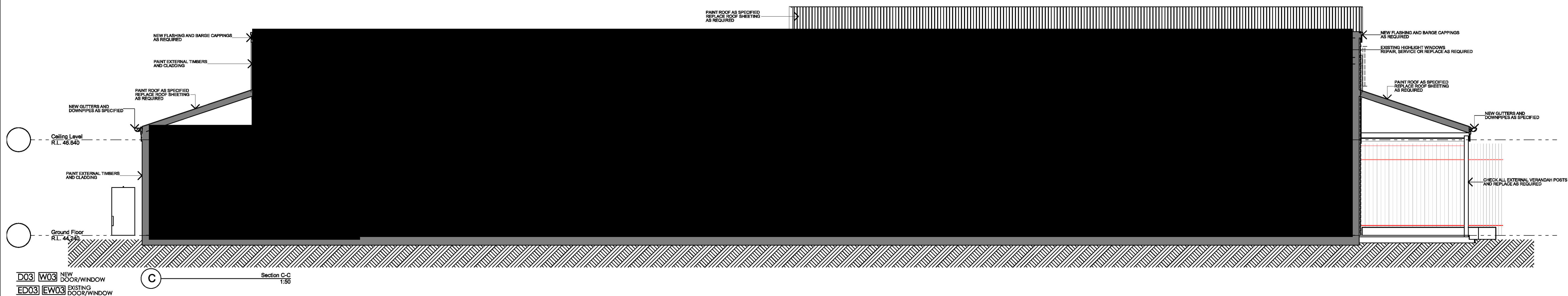
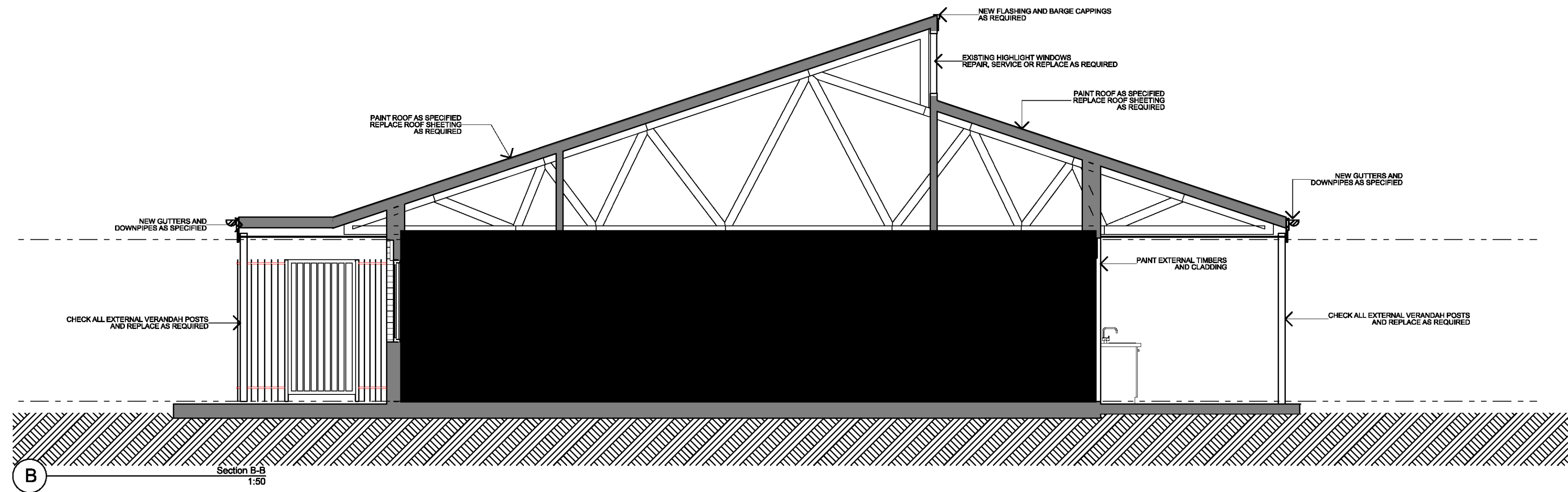
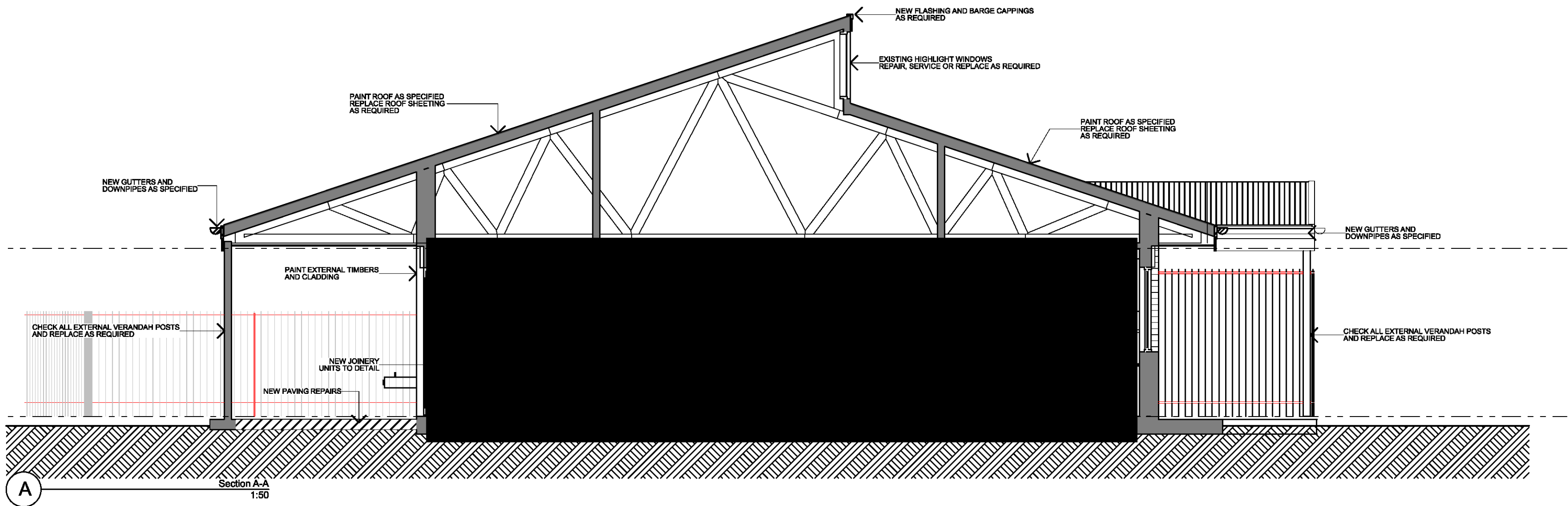


PO Box 32 Kurrajong NSW 2758
p 02 4573 1320
e barbara@btarchitects.com.au
www.btarchitects.com.au

Barbara Tarnawski Architects Pty Ltd

CHECK ALL DIMENSIONS ON SITE.
REFER ANY DISCREPANCIES TO THE ARCHITECT BEFORE PROCEEDING WITH THE WORKS






Issue	Date	Amendments
A	25/05/2021	ISSUED FOR APPROVAL
B	11/08/2021	ISSUED FOR APPROVAL

SCALE 1:50 @A1
SCALE 1:100 @A3

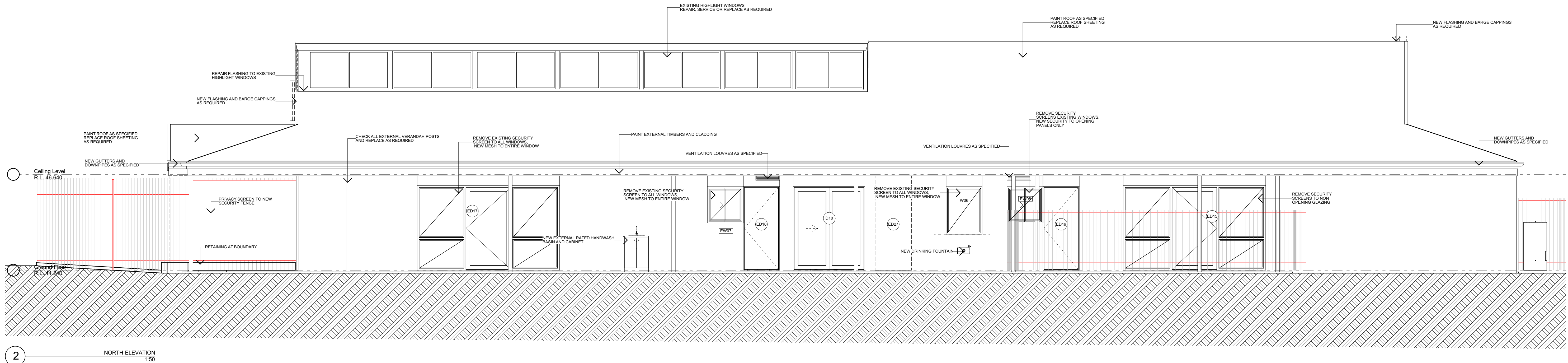
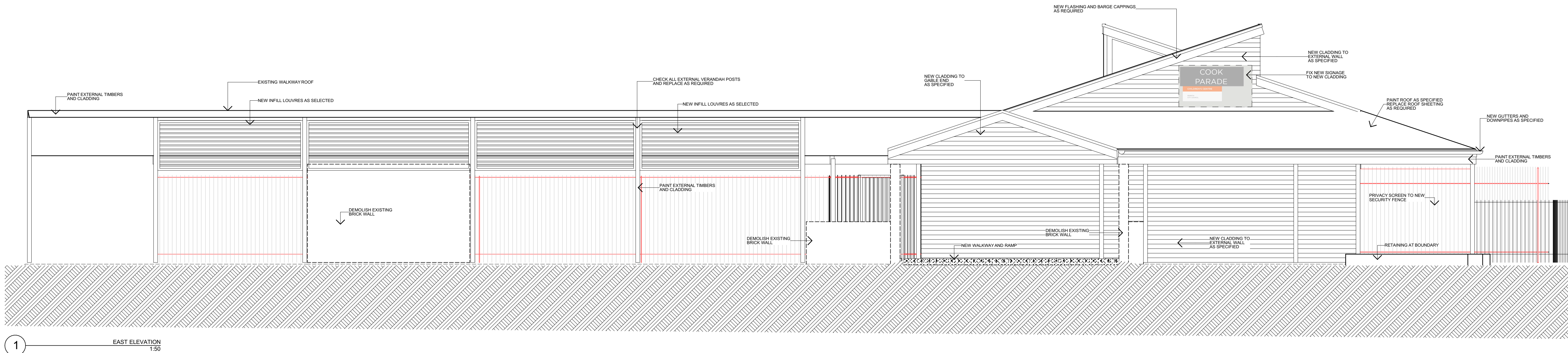
NOTES
Structural engineering as required for all structural works, including paths, slabs, new walls, roof, columns, beams.
Refer to Access report for accessibility requirements.
Refer to Specifications.
NOTE - tempering valves to all hot water provisions. Backflow valves required next to all wash down hoses next to sluices, irrigation systems etc.

PENRITH CITY COUNCIL
Client
Penrith City Council
601 High Street Penrith

Project
Cook Parade Child Care Centre
41 Cook Parade St Clair NSW 2760

Stage Development Application					
Drawing Title SECTION S-01					
Drawing No. 200203 - A300					
Date 05/05/21	Drawn by WLM	Original Sheet size A1	Project No. 200505	Issue B	

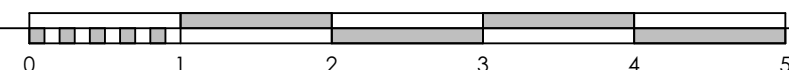
PO Box 32 Kurrajong NSW 2758
p 02 4573 1320
e barbara@btarchitects.com.au
www.btarchitects.com.au
Barbara Tarnawski Architects Pty Ltd
CHECK ALL DIMENSIONS ON SITE.
REFER ANY DISCREPANCIES TO THE ARCHITECT BEFORE PROCEEDING WITH THE WORKS



D03 W03 NEW DOOR/WINDOW
ED03 EW03 EXISTING DOOR/WINDOW

Issue	Date	Amendments
A	25/05/2021	ISSUED FOR APPROVAL
B	11/08/2021	ISSUED FOR APPROVAL

SCALE 1:50 @A1
SCALE 1:100 @A3



NOTES

Structural engineering as required for all structural works, including paths, slabs, new walls, roof, columns, beams.

Refer to Access report for accessibility requirements.
Refer to Specifications.

NOTE - tempering valves to all hot water provisions. Backflow valves required next to all wash down hoses next to sluices, irrigation systems etc.

PENRITH
CITY COUNCIL

Client

Penrith City Council
601 High Street Penrith

Project

Cook Parade Child Care Centre
41 Cook Parade St Clair NSW 2760

Stage

Development Application

Drawing Title
ELEVATION-01

Drawing No.

200203 - A400

Date
05/05/21

Drawn by
WLM

Original
Sheet size
A1

Project No.
200505

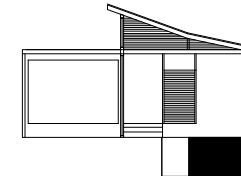
Issue
B

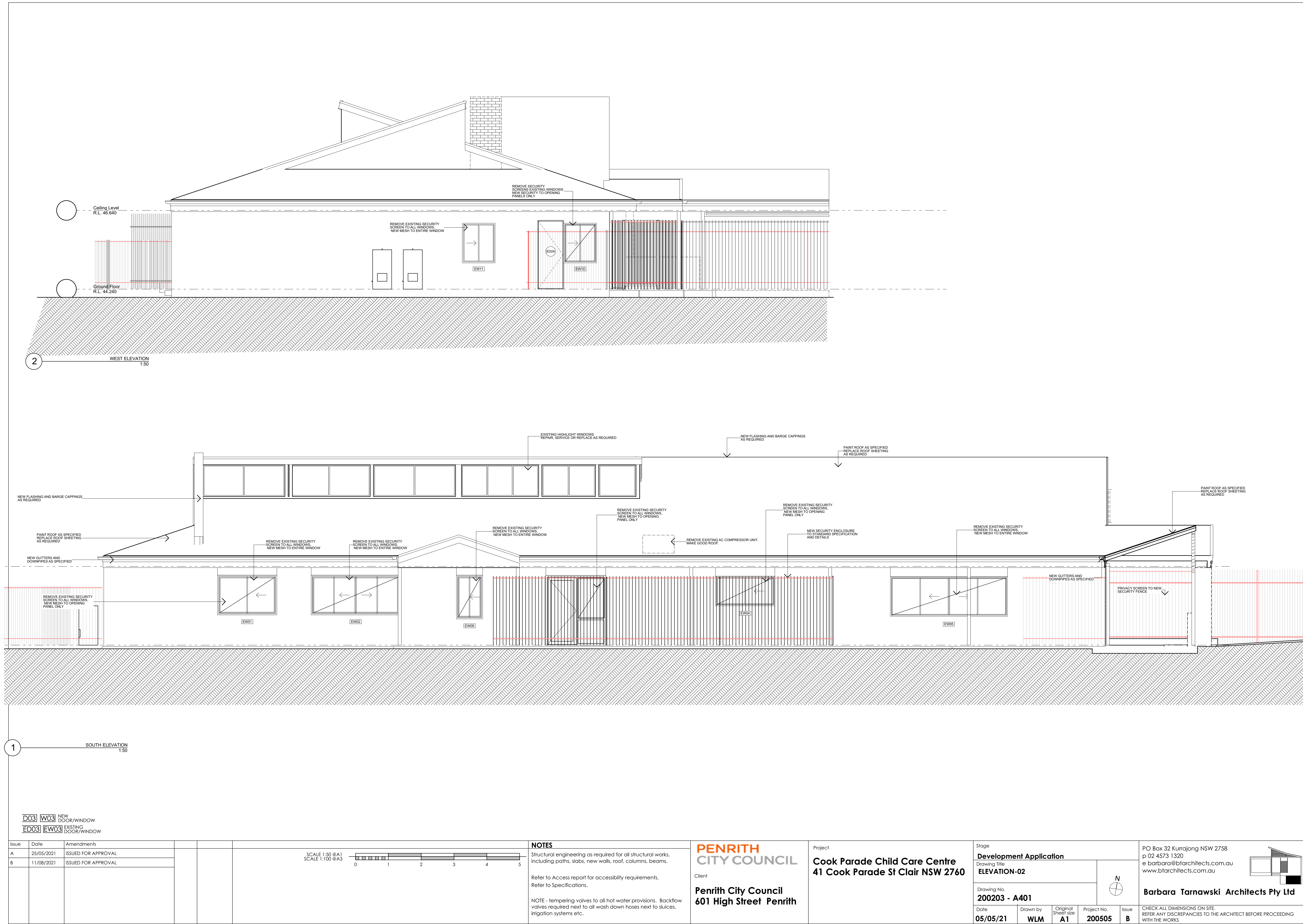


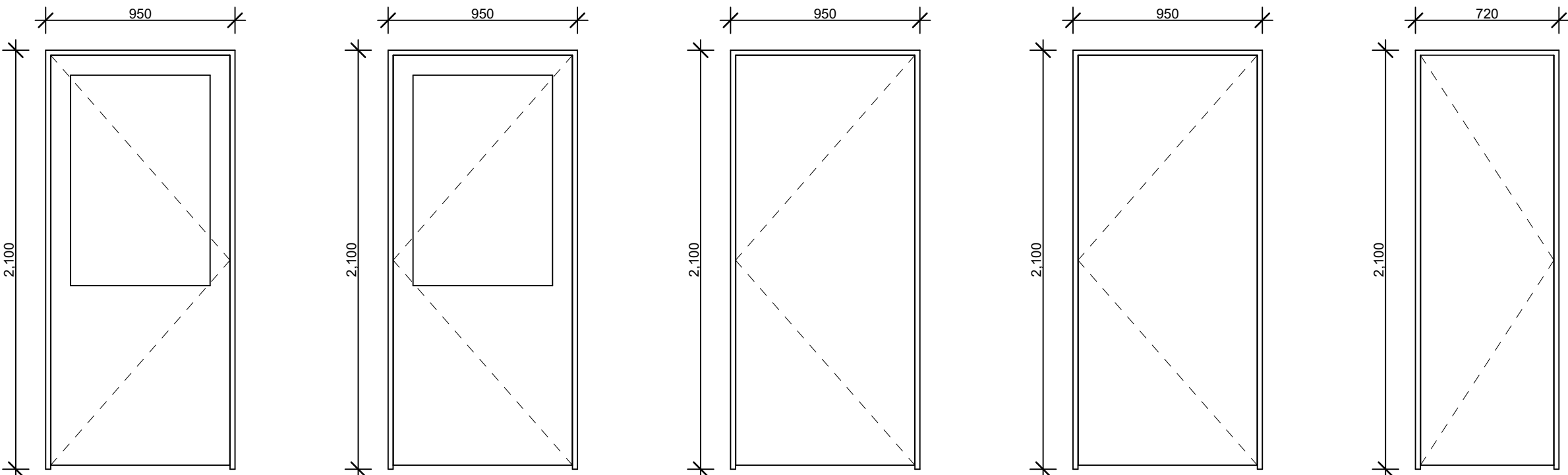
PO Box 32 Kurrajong NSW 2758
p 02 4573 1320
e barbara@btarchitects.com.au
www.btarchitects.com.au

Barbara Tarnawski Architects Pty Ltd

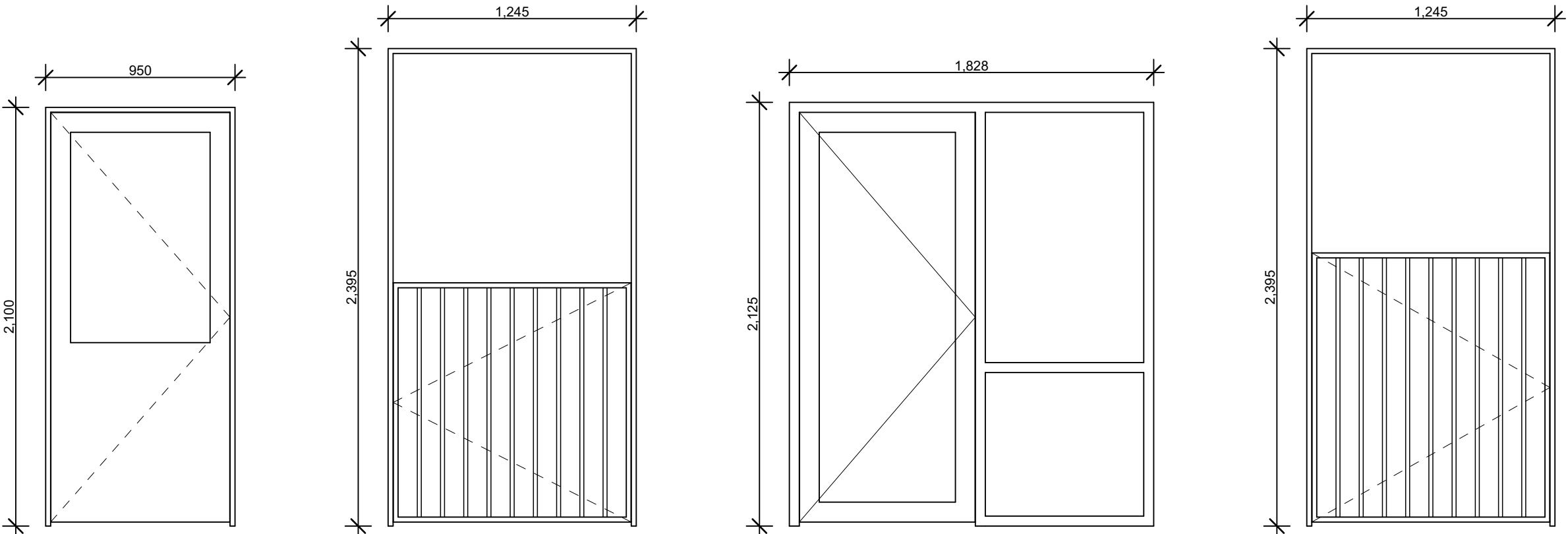
CHECK ALL DIMENSIONS ON SITE.
REFER ANY DISCREPANCIES TO THE ARCHITECT BEFORE PROCEEDING
WITH THE WORKS



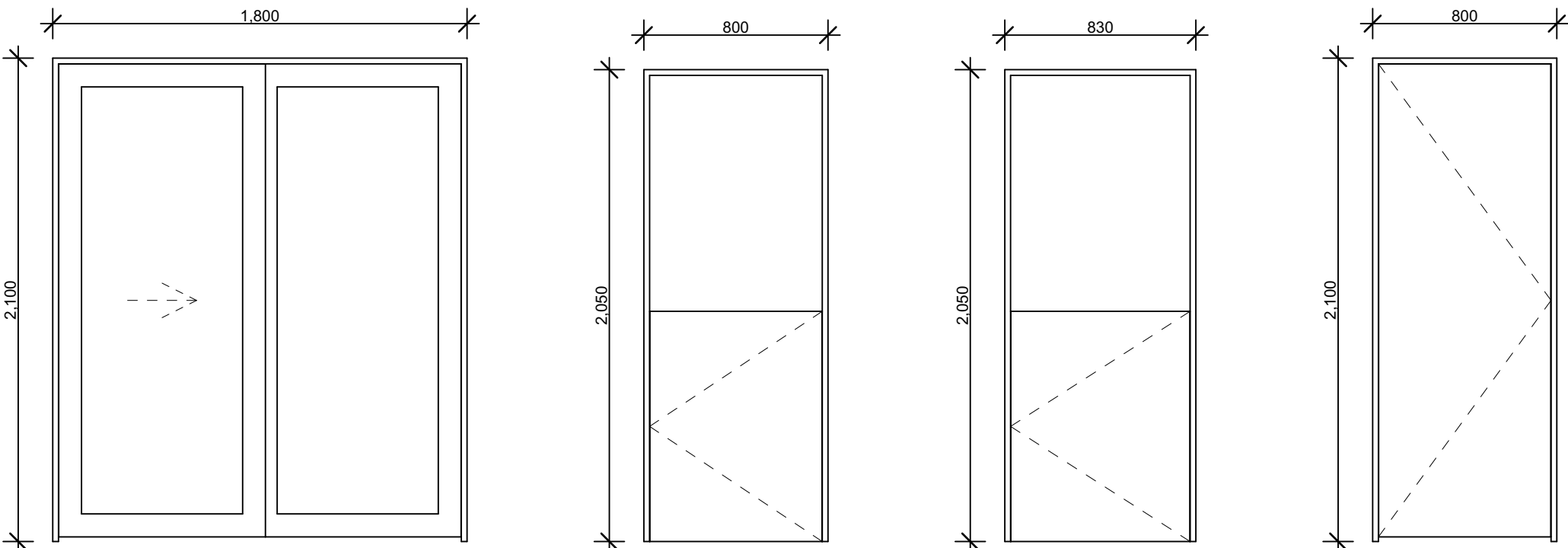




D01 D02 D03 D04 D05



D06 D07 D08 D09



D10 D11 D12 D13

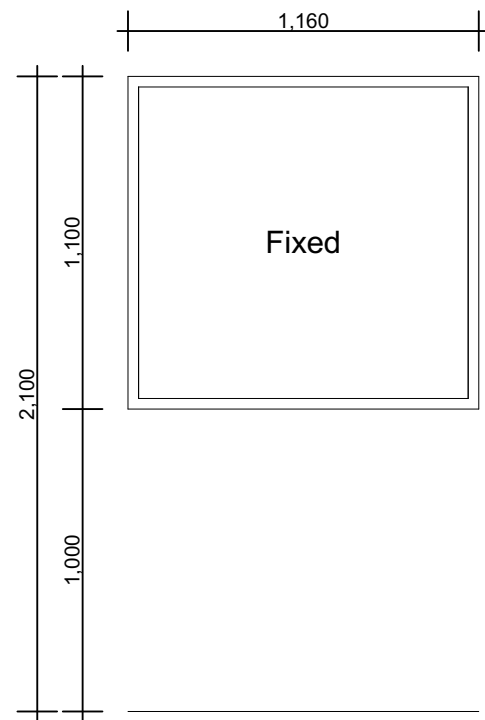
NEW DOOR LIST

ID	Nominal W x H	Location	General Notes	Signage	Status	Notes
D01	950×2,100	Office	Include keylock	'Office - Staff Only'	New	Min. 850 clear opening, glazed
D02	950×2,100	Cot Room		'Cot Room'	New	Min. 850 clear opening, glazed
D03	1,597×2,100	Staff Room	Include keylock		New	
D03	950×2,100	Staff Room	Include keylock	'Staff Room - Staff Only'	New	Min. 850 clear opening
D04	950×2,100	Accessible WC		As to AS1428	New	Min. 850 clear opening
D05	720×2,100	Pantry			New	Pantry door
D06	950×2,100	Kitchen	Include keylock	'Kitchen'	New	Min. 850 clear opening, glazed
D07	1,000×2,395	Playroom/Hall	Pool fence type lock		New	To fit opening. child lock gate
D08	1,828×2,125	External Entry	Include keylock		New	External main entry door and sidelight
D09	1,000×2,395	Playroom/Hall	Pool fence type lock		New	To fit opening. child lock gate
D10	1,800×2,100	Staff External Entry	Include keylock		New	External glazed sliding doors
D11	800×2,050	Internal Toilet 01			New	Min. 850 clear opening, half hieght WC door
D12	830×2,050	Internal Toilet 02			New	Min. 850 clear opening, half hieght WC door
D13	800×2,100	Store Room	Include keylock		New	Store Room Door
D14	950×2,100	Laundry	Include keylock	"Laundry-staff only:	New	Min. 850 clear opening
D15	950×2,100	Laundry	Include keylock	'Nappy Room'	New	Min. 850 clear opening
ED01	884×2,100	Hallway			To Be Demolished	
ED02	800×2,100	Office			To Be Demolished	
ED03	800×2,100	Quiet Space			To Be Demolished	
ED04	800×2,100	Cot Room			To Be Demolished	
ED05	800×2,050	Toilet Internal			To Be Demolished	
ED06	800×2,100	Office			To Be Demolished	
ED07	830×2,100	Toilet Internal			To Be Demolished	
ED08	800×2,100	Cot Room			To Be Demolished	
ED09	800×2,100	Store	Include keylock	'Store'	Existing	
ED11	800×2,100	Staff Room			To Be Demolished	
ED12	800×2,100	Store Room			To Be Demolished	
ED13	800×2,100	Store Room			To Be Demolished	
ED14	800×2,100	Cleaner			To Be Demolished	
ED15	3,570×2,125	External Playroom 0-2	Include keylock		Existing	
ED16	800×2,100	Ex, Staff Room			To Be Demolished	
ED17	3,570×2,125	External Playroom 2-5	Include keylock		Existing	
ED18	910×2,100	Toilet External	Include keylock		Existing	
ED19	910×2,100	Toilet External	Include keylock		Existing	
ED20	800×2,100	Pantry			To Be Demolished	
ED21	950×2,100	Laundry			To Be Demolished	
ED22	800×2,100	Pantry			To Be Demolished	
ED23	600×2,100	Office			To Be Demolished	
ED24	800×2,100	Laundry Exterior	Include keylock		Existing	
ED25	800×2,100	Pantry			To Be Demolished	
ED26	2,264×2,160	External Store Roller	Include keylock		Existing	
ED27	910×2,100	Ex. Staff Entry			To Be Demolished	
ED28	962×2,100	Existing External Entry			To Be Demolished	
ED29	719×2,100	Pantry			To Be Demolished	
ED30	800×2,100	Hall Cupboard			To Be Demolished	
ED31	950×2,100	Laundry			To Be Demolished	

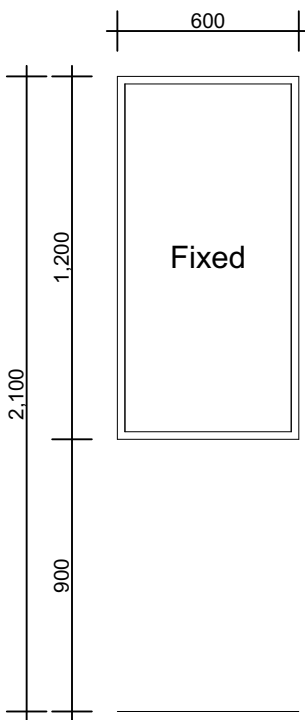


Door Signage
Provide door signage as per image

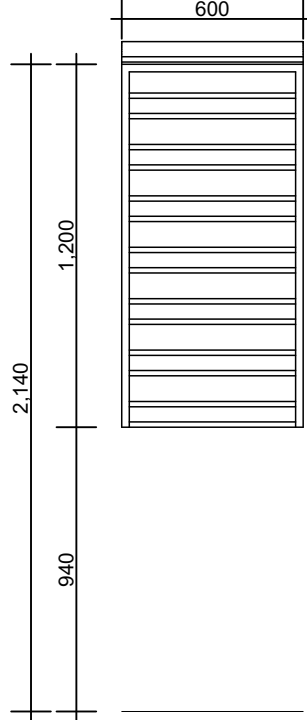
Issue	Date	Amendments	<div>SCALE 1:25 @A1 SCALE 1:50 @A3</div> <div>012</div>	<div>NOTES</div> <div>Structural engineering as required for all structural works, including paths, slabs, new walls, roof, columns, beams.</div> <div>Refer to Access report for accessibility requirements. Refer to Specifications.</div> <div>NOTE - tempering valves to all hot water provisions. Backflow valves required next to all wash down hoses next to sluices, irrigation systems etc.</div>		<div>PENRITH CITY COUNCIL</div> <div>Client</div> <div>Penrith City Council 601 High Street Penrith</div>	<div>Project</div> <div>Cook Parade Child Care Centre 41 Cook Parade St Clair NSW 2760</div>	<div>Stage</div> <div>Development Application</div> <div>Drawing Title</div> <div>DOOR SCHEDULE</div> <div>Drawing No.</div> <div>200203 - A500</div> <div>Date</div> <div>05/05/21</div> <div>Drawn by</div> <div>WLM</div> <div>Original Sheet size</div> <div>A1</div> <div>Project No.</div> <div>200505</div> <div>Issue</div> <div>B</div>		<div>PO Box 32 Kurrajong NSW 2758 p 02 4573 1320 e barbara@btarchitects.com.au www.btarchitects.com.au</div> <div>Barbara Tarnawski Architects Pty Ltd</div> <div>CHECK ALL DIMENSIONS ON SITE. REFER ANY DISCREPANCIES TO THE ARCHITECT BEFORE PROCEEDING WITH THE WORKS</div>
A	25/05/2021	ISSUED FOR APPROVAL								
B	11/08/2021	ISSUED FOR APPROVAL								



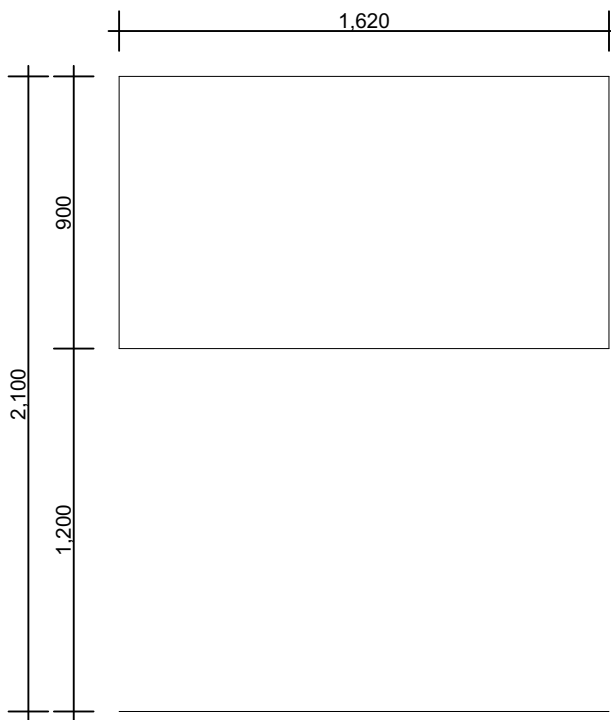
W01
Fixed glass viewing panel
Fit roller blinds to frame



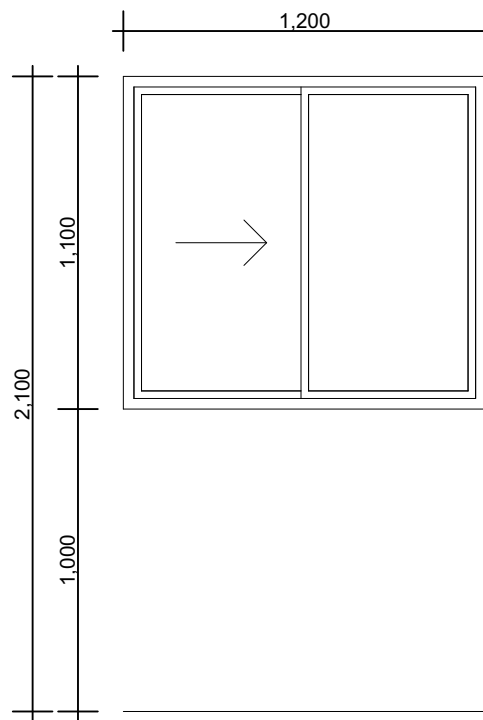
W02
Fixed glass viewing panel
Fit roller blinds to frame



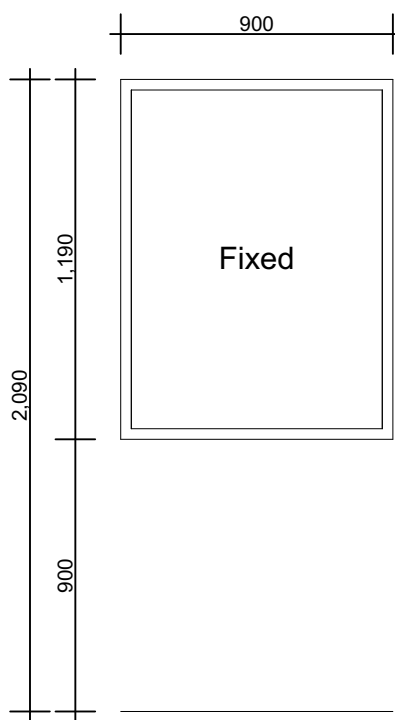
W03
Roller shutter pass-thru



W04
Empty Opening
Make good stud wall surrounds



W05
Sliding window
Fit roller blinds to frame



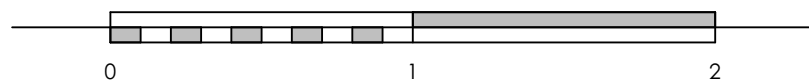
W06
Fixed glass viewing panel

NEW WINDOW LIST

No.	Nominal W x H	Notes
W01	1,160×1,100	Fixed glazing
W02	600×1,200	Fixed glazing
W03	600×1,200	Service roller window
W04	1,620×900	Empty opening
W05	1,200×1,100	Sliding Window
W06	900×1,190	Fixed glazing

Issue	Date	Amendments
A	25/05/2021	ISSUED FOR APPROVAL
B	11/08/2021	ISSUED FOR APPROVAL

SCALE 1:25 @A1
SCALE 1:50 @A3



NOTES

Structural engineering as required for all structural works, including paths, slabs, new walls, roof, columns, beams.

Refer to Access report for accessibility requirements.
Refer to Specifications.

NOTE - tempering valves to all hot water provisions. Backflow valves required next to all wash down hoses next to sluices, irrigation systems etc.

PENRITH
CITY COUNCIL

Client

Penrith City Council
601 High Street Penrith

Project

Cook Parade Child Care Centre
41 Cook Parade St Clair NSW 2760

Stage

Development Application

Drawing Title

WINDOW SCHEDULE

Drawing No.

200203 - A501

Date

05/05/21

Drawn by

WLM

Original
Sheet size

A1

Project No.

200505

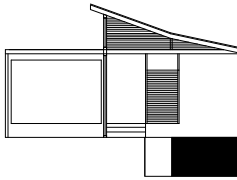
Issue

B

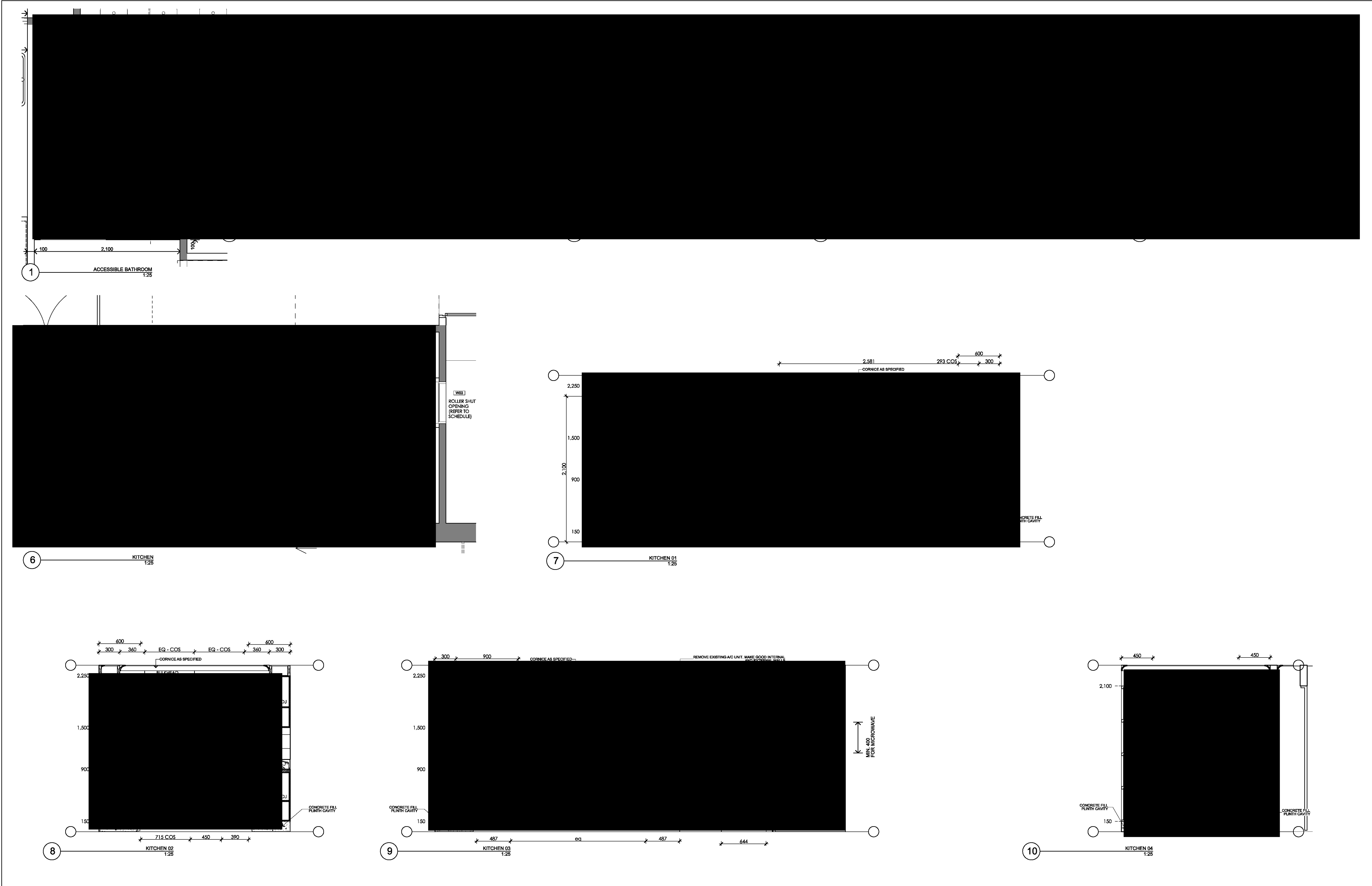


PO Box 32 Kurrajong NSW 2758
p 02 4573 1320
e barbara@btarchitects.com.au
www.btarchitects.com.au

Barbara Tarnawski Architects Pty Ltd



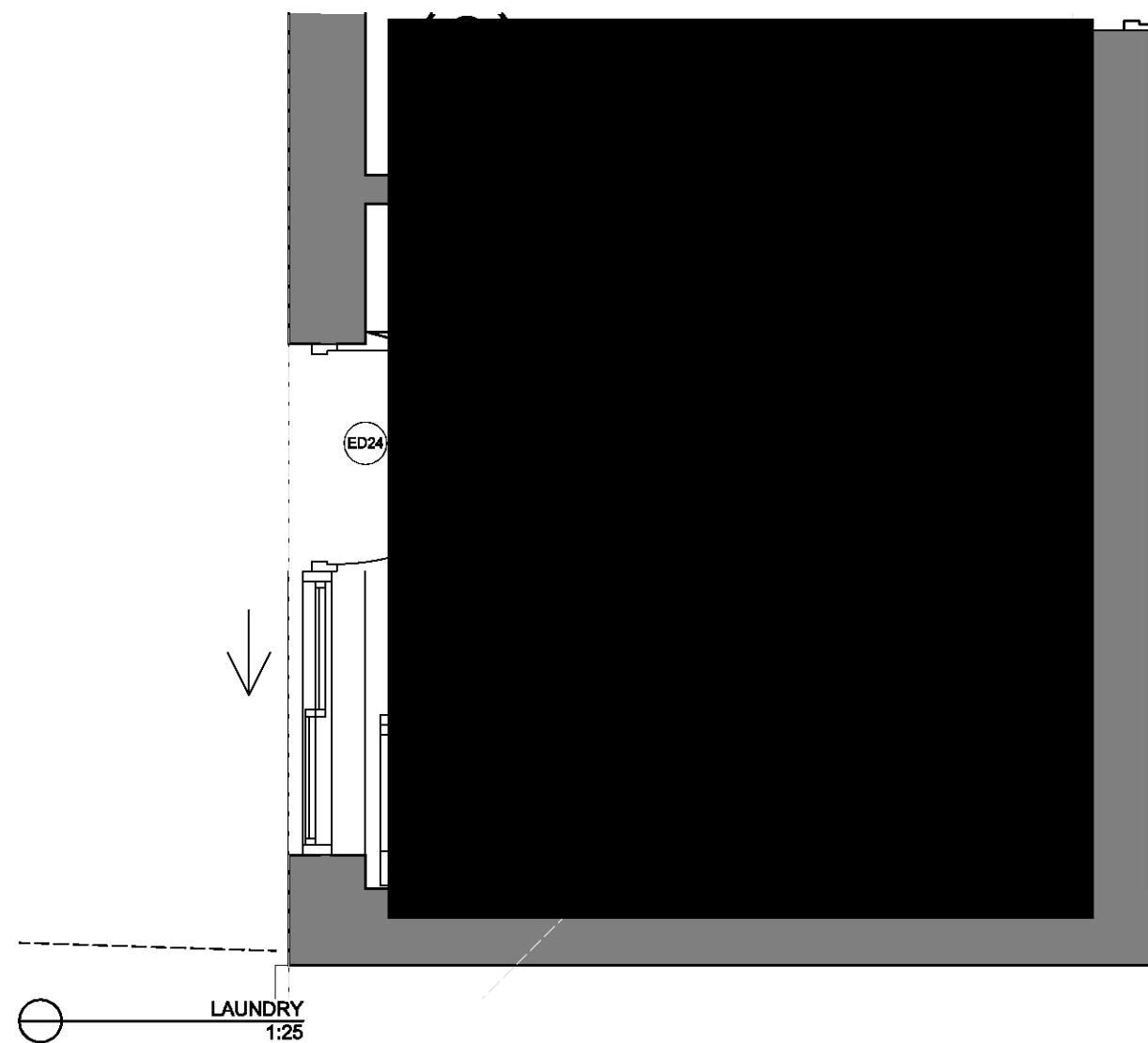
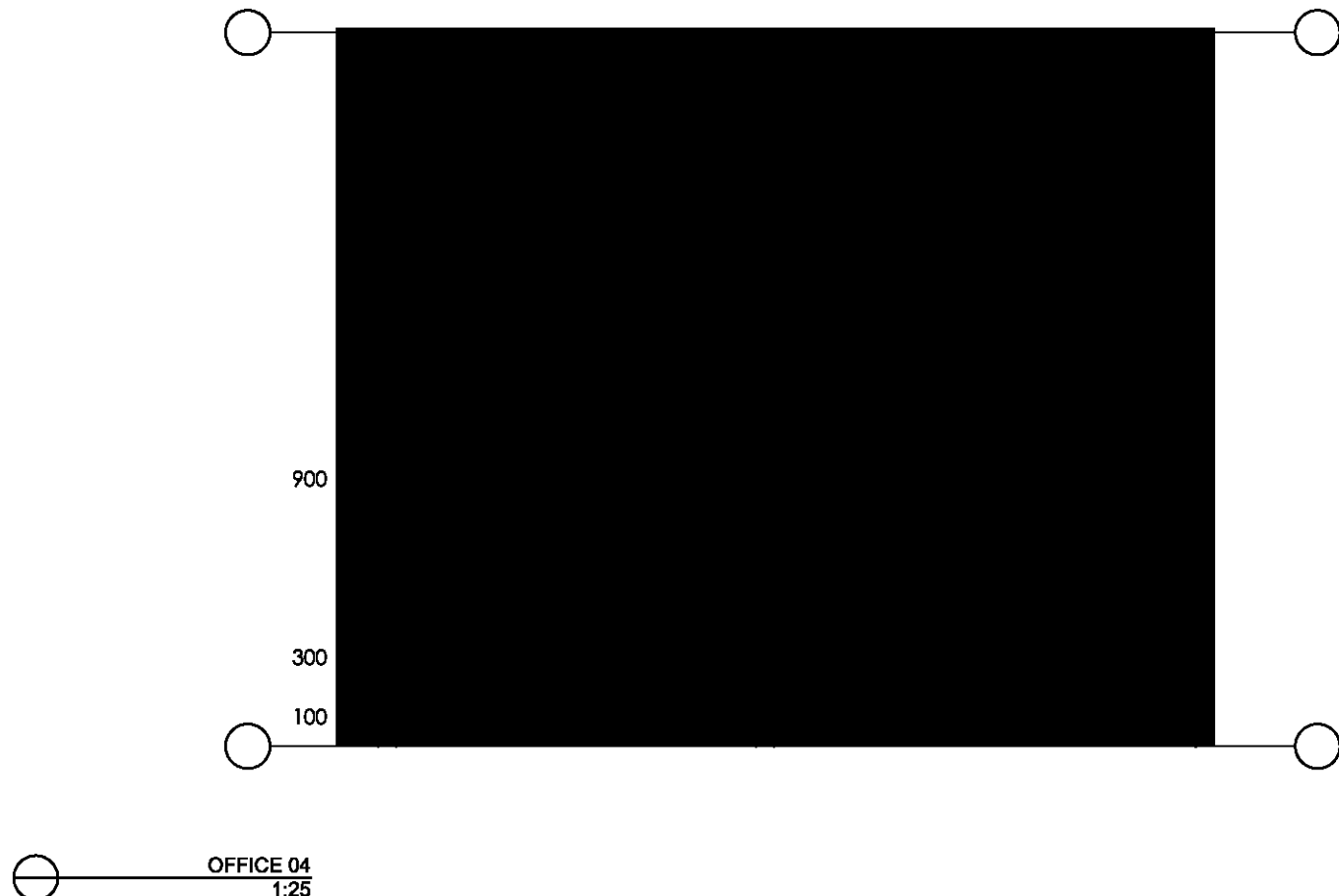
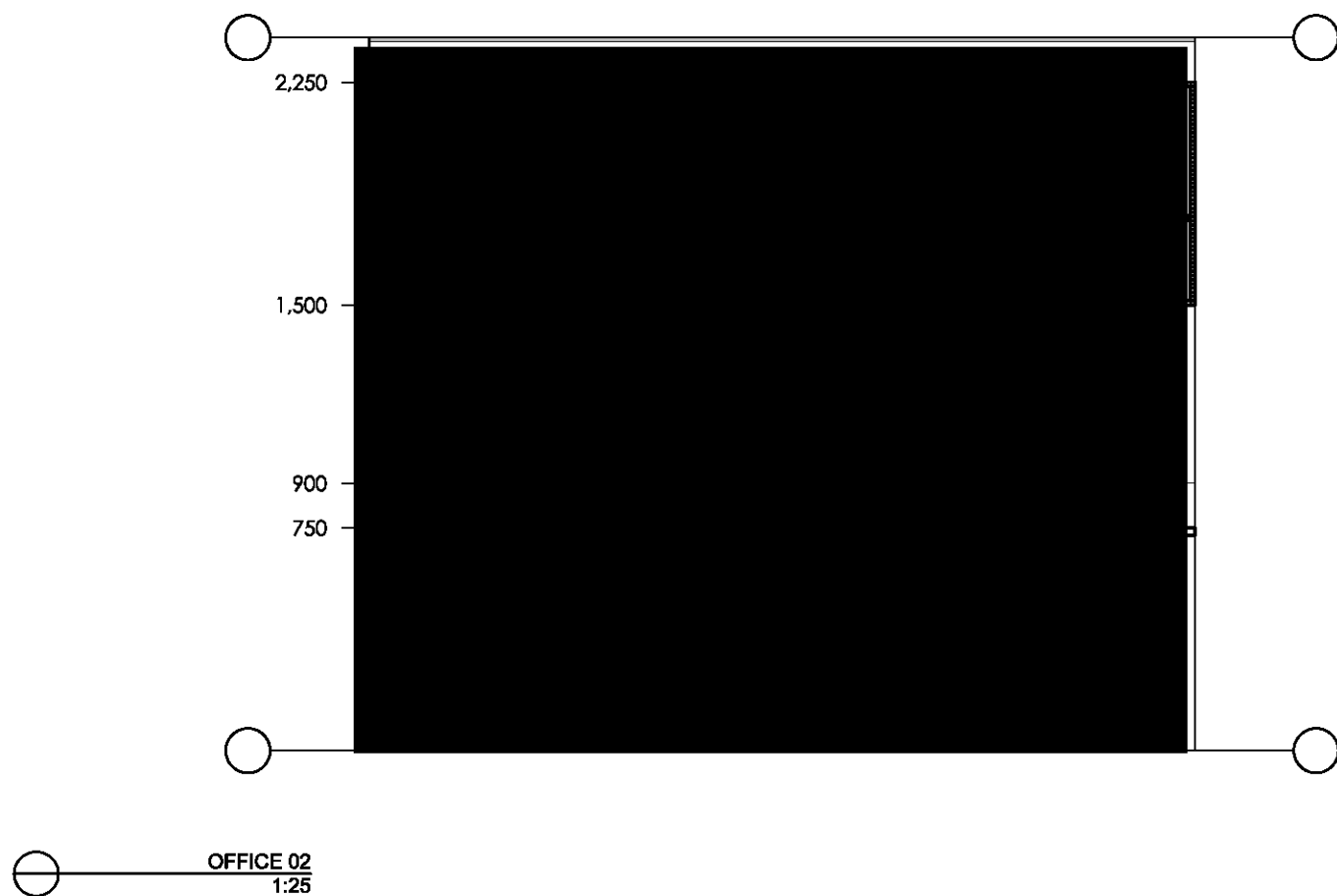
CHECK ALL DIMENSIONS ON SITE.
REFER ANY DISCREPANCIES TO THE ARCHITECT BEFORE PROCEEDING
WITH THE WORKS



Issue	Date	Amendments																																																																																																																																																																																																																																																																																																																																																																																																																																																																																																																																																																																																																																																																																																																																																																																																																																																																																																																																																																																																																																																																																																																																																																																																																																																																																																																																																																																																																																																																																																																</
-------	------	------------	--	--	--	--	--	--	--	--	--	--	--	--	--	--	--	--	--	--	--	--	--	--	--	--	--	--	--	--	--	--	--	--	--	--	--	--	--	--	--	--	--	--	--	--	--	--	--	--	--	--	--	--	--	--	--	--	--	--	--	--	--	--	--	--	--	--	--	--	--	--	--	--	--	--	--	--	--	--	--	--	--	--	--	--	--	--	--	--	--	--	--	--	--	--	--	--	--	--	--	--	--	--	--	--	--	--	--	--	--	--	--	--	--	--	--	--	--	--	--	--	--	--	--	--	--	--	--	--	--	--	--	--	--	--	--	--	--	--	--	--	--	--	--	--	--	--	--	--	--	--	--	--	--	--	--	--	--	--	--	--	--	--	--	--	--	--	--	--	--	--	--	--	--	--	--	--	--	--	--	--	--	--	--	--	--	--	--	--	--	--	--	--	--	--	--	--	--	--	--	--	--	--	--	--	--	--	--	--	--	--	--	--	--	--	--	--	--	--	--	--	--	--	--	--	--	--	--	--	--	--	--	--	--	--	--	--	--	--	--	--	--	--	--	--	--	--	--	--	--	--	--	--	--	--	--	--	--	--	--	--	--	--	--	--	--	--	--	--	--	--	--	--	--	--	--	--	--	--	--	--	--	--	--	--	--	--	--	--	--	--	--	--	--	--	--	--	--	--	--	--	--	--	--	--	--	--	--	--	--	--	--	--	--	--	--	--	--	--	--	--	--	--	--	--	--	--	--	--	--	--	--	--	--	--	--	--	--	--	--	--	--	--	--	--	--	--	--	--	--	--	--	--	--	--	--	--	--	--	--	--	--	--	--	--	--	--	--	--	--	--	--	--	--	--	--	--	--	--	--	--	--	--	--	--	--	--	--	--	--	--	--	--	--	--	--	--	--	--	--	--	--	--	--	--	--	--	--	--	--	--	--	--	--	--	--	--	--	--	--	--	--	--	--	--	--	--	--	--	--	--	--	--	--	--	--	--	--	--	--	--	--	--	--	--	--	--	--	--	--	--	--	--	--	--	--	--	--	--	--	--	--	--	--	--	--	--	--	--	--	--	--	--	--	--	--	--	--	--	--	--	--	--	--	--	--	--	--	--	--	--	--	--	--	--	--	--	--	--	--	--	--	--	--	--	--	--	--	--	--	--	--	--	--	--	--	--	--	--	--	--	--	--	--	--	--	--	--	--	--	--	--	--	--	--	--	--	--	--	--	--	--	--	--	--	--	--	--	--	--	--	--	--	--	--	--	--	--	--	--	--	--	--	--	--	--	--	--	--	--	--	--	--	--	--	--	--	--	--	--	--	--	--	--	--	--	--	--	--	--	--	--	--	--	--	--	--	--	--	--	--	--	--	--	--	--	--	--	--	--	--	--	--	--	--	--	--	--	--	--	--	--	--	--	--	--	--	--	--	--	--	--	--	--	--	--	--	--	--	--	--	--	--	--	--	--	--	--	--	--	--	--	--	--	--	--	--	--	--	--	--	--	--	--	--	--	--	--	--	--	--	--	--	--	--	--	--	--	--	--	--	--	--	--	--	--	--	--	--	--	--	--	--	--	--	--	--	--	--	--	--	--	--	--	--	--	--	--	--	--	--	--	--	--	--	--	--	--	--	--	--	--	--	--	--	--	--	--	--	--	--	--	--	--	--	--	--	--	--	--	--	--	--	--	--	--	--	--	--	--	--	--	--	--	--	--	--	--	--	--	--	--	--	--	--	--	--	--	--	--	--	--	--	--	--	--	--	--	--	--	--	--	--	--	--	--	--	--	--	--	--	--	--	--	--	--	--	--	--	--	--	--	--	--	--	--	--	--	--	--	--	--	--	--	--	--	--	--	--	--	--	--	--	--	--	--	--	--	--	--	--	--	--	--	--	--	--	--	--	--	--	--	--	--	--	--	--	--	--	--	--	--	--	--	--	--	--	--	--	--	--	--	--	--	--	--	--	--	--	--	--	--	--	--	--	--	--	--	--	--	--	--	--	--	--	--	--	--	--	--	--	--	--	--	--	--	--	--	--	--	--	--	--	--	--	--	--	--	--	--	--	--	--	--	--	--	--	--	--	--	--	--	--	--	--	--	--	--	--	--	--	--	--	--	--	--	--	--	--	--	--	--	--	--	--	--	--	--	--	--	--	--	--	--	--	--	--	--	--	--	--	--	--	--	--	--	--	--	--	--	--	--	--	--	--	--	--	--	--	--	--	--	--	--	--	--	--	--	--	--	--	--	--	--	--	--	--	--	--	--	--	--	--	--	--	--	--	--	--	--	--	--	--	--	--	--	--	--	--	--	--	--	--	--	--	--	--	--	--	--	--	--	--	--	--	--	--	--	--	--	--	--	--	--	--	--	--	--	--	--	--	--	--	--	--	--	--	--	--	--	--	--	--	--	--	--	--	--	--	--	--	--	--	--	--	--	--	--	--	--	--	--	--	--	--	--	--	--	--	--	--	--	--	--	--	--	--	--	--	--	--	--	--	--	--	--	--	--	--	--	--	--	--	--	--	--	--	--	--	--	--	--	--	--	--	--	--	--	--	--	--	--	--	--	--	--	--	--	--	--	--	--	--	--	--	--	--	--	--	--	--	--	--	--	--	--	--	--	--	--	--	--	--	--	--	--	--	--	--	--	--	--	--	--	--	--	--	--	--	--	--	--	--	--	--	--	--	--	--	--	--	--	--	--	--	--	--	--	--	--	--	--	--	--	--	--	--	--	--	--	--	--	--	--	--	--	--	--	--	--	--	--	--	--	--	--	--	--	--	--	--	--	--	--	--	--	--	--	--	--	--	--	--	--	--	--	--	--	--	--	--	--	--	--	--	--	--	--	--	--	--	--	--	--	--	--	--	--	--	--	--	--	--	--	--	--	--	--	--	--	--	--	--	--	--	--	--	--	--	--	--	--	--	--	--	--	--	--	--	--	--	--	--	--	--	--	--	--	--	--	--	--	--	--	--	--	--	--	--	--	--	--	--	--	--	--	--	--	--	--	--	--	--	--	--	--	--	--	--	--	--	--	--	--	--	--	--	--	--	--	--	--	--	--	--	--	--	--	--	--	--	--	--	--	--	--	--	--	--	--	--	--	--	--	--	--	--	--	--	--	--	--	--	--	--	--	--	--	--	--	--	--	--	--	--	--	--	--	--	--	--	--	--	--	--	--	--	--	--	--	--	--	--	--	--	--	--	--	--	--	--	--	--	--	--	--	--	--	--	--	--	--	--	--	--	--	--	--	--	--	--	--	--	--	--	--	--	--	--	--	--	--	--	--	--	--	----



Issue		Date		Amendments																																																																																																																																																																																																																																																																																																																																																																																																																																																																																																																																																																																																																																																																																																																																																																																																																																																																																																																																																																																																																																																																																																																																																																																																																																																																																																																																																																																																																																																																																																																																																																																																													
-------	--	------	--	------------	--	--	--	--	--	--	--	--	--	--	--	--	--	--	--	--	--	--	--	--	--	--	--	--	--	--	--	--	--	--	--	--	--	--	--	--	--	--	--	--	--	--	--	--	--	--	--	--	--	--	--	--	--	--	--	--	--	--	--	--	--	--	--	--	--	--	--	--	--	--	--	--	--	--	--	--	--	--	--	--	--	--	--	--	--	--	--	--	--	--	--	--	--	--	--	--	--	--	--	--	--	--	--	--	--	--	--	--	--	--	--	--	--	--	--	--	--	--	--	--	--	--	--	--	--	--	--	--	--	--	--	--	--	--	--	--	--	--	--	--	--	--	--	--	--	--	--	--	--	--	--	--	--	--	--	--	--	--	--	--	--	--	--	--	--	--	--	--	--	--	--	--	--	--	--	--	--	--	--	--	--	--	--	--	--	--	--	--	--	--	--	--	--	--	--	--	--	--	--	--	--	--	--	--	--	--	--	--	--	--	--	--	--	--	--	--	--	--	--	--	--	--	--	--	--	--	--	--	--	--	--	--	--	--	--	--	--	--	--	--	--	--	--	--	--	--	--	--	--	--	--	--	--	--	--	--	--	--	--	--	--	--	--	--	--	--	--	--	--	--	--	--	--	--	--	--	--	--	--	--	--	--	--	--	--	--	--	--	--	--	--	--	--	--	--	--	--	--	--	--	--	--	--	--	--	--	--	--	--	--	--	--	--	--	--	--	--	--	--	--	--	--	--	--	--	--	--	--	--	--	--	--	--	--	--	--	--	--	--	--	--	--	--	--	--	--	--	--	--	--	--	--	--	--	--	--	--	--	--	--	--	--	--	--	--	--	--	--	--	--	--	--	--	--	--	--	--	--	--	--	--	--	--	--	--	--	--	--	--	--	--	--	--	--	--	--	--	--	--	--	--	--	--	--	--	--	--	--	--	--	--	--	--	--	--	--	--	--	--	--	--	--	--	--	--	--	--	--	--	--	--	--	--	--	--	--	--	--	--	--	--	--	--	--	--	--	--	--	--	--	--	--	--	--	--	--	--	--	--	--	--	--	--	--	--	--	--	--	--	--	--	--	--	--	--	--	--	--	--	--	--	--	--	--	--	--	--	--	--	--	--	--	--	--	--	--	--	--	--	--	--	--	--	--	--	--	--	--	--	--	--	--	--	--	--	--	--	--	--	--	--	--	--	--	--	--	--	--	--	--	--	--	--	--	--	--	--	--	--	--	--	--	--	--	--	--	--	--	--	--	--	--	--	--	--	--	--	--	--	--	--	--	--	--	--	--	--	--	--	--	--	--	--	--	--	--	--	--	--	--	--	--	--	--	--	--	--	--	--	--	--	--	--	--	--	--	--	--	--	--	--	--	--	--	--	--	--	--	--	--	--	--	--	--	--	--	--	--	--	--	--	--	--	--	--	--	--	--	--	--	--	--	--	--	--	--	--	--	--	--	--	--	--	--	--	--	--	--	--	--	--	--	--	--	--	--	--	--	--	--	--	--	--	--	--	--	--	--	--	--	--	--	--	--	--	--	--	--	--	--	--	--	--	--	--	--	--	--	--	--	--	--	--	--	--	--	--	--	--	--	--	--	--	--	--	--	--	--	--	--	--	--	--	--	--	--	--	--	--	--	--	--	--	--	--	--	--	--	--	--	--	--	--	--	--	--	--	--	--	--	--	--	--	--	--	--	--	--	--	--	--	--	--	--	--	--	--	--	--	--	--	--	--	--	--	--	--	--	--	--	--	--	--	--	--	--	--	--	--	--	--	--	--	--	--	--	--	--	--	--	--	--	--	--	--	--	--	--	--	--	--	--	--	--	--	--	--	--	--	--	--	--	--	--	--	--	--	--	--	--	--	--	--	--	--	--	--	--	--	--	--	--	--	--	--	--	--	--	--	--	--	--	--	--	--	--	--	--	--	--	--	--	--	--	--	--	--	--	--	--	--	--	--	--	--	--	--	--	--	--	--	--	--	--	--	--	--	--	--	--	--	--	--	--	--	--	--	--	--	--	--	--	--	--	--	--	--	--	--	--	--	--	--	--	--	--	--	--	--	--	--	--	--	--	--	--	--	--	--	--	--	--	--	--	--	--	--	--	--	--	--	--	--	--	--	--	--	--	--	--	--	--	--	--	--	--	--	--	--	--	--	--	--	--	--	--	--	--	--	--	--	--	--	--	--	--	--	--	--	--	--	--	--	--	--	--	--	--	--	--	--	--	--	--	--	--	--	--	--	--	--	--	--	--	--	--	--	--	--	--	--	--	--	--	--	--	--	--	--	--	--	--	--	--	--	--	--	--	--	--	--	--	--	--	--	--	--	--	--	--	--	--	--	--	--	--	--	--	--	--	--	--	--	--	--	--	--	--	--	--	--	--	--	--	--	--	--	--	--	--	--	--	--	--	--	--	--	--	--	--	--	--	--	--	--	--	--	--	--	--	--	--	--	--	--	--	--	--	--	--	--	--	--	--	--	--	--	--	--	--	--	--	--	--	--	--	--	--	--	--	--	--	--	--	--	--	--	--	--	--	--	--	--	--	--	--	--	--	--	--	--	--	--	--	--	--	--	--	--	--	--	--	--	--	--	--	--	--	--	--	--	--	--	--	--	--	--	--	--	--	--	--	--	--	--	--	--	--	--	--	--	--	--	--	--	--	--	--	--	--	--	--	--	--	--	--	--	--	--	--	--	--	--	--	--	--	--	--	--	--	--	--	--	--	--	--	--	--	--	--	--	--	--	--	--	--	--	--	--	--	--	--	--	--	--	--	--	--	--	--	--	--	--	--	--	--	--	--	--	--	--	--	--	--	--	--	--	--	--	--	--	--	--	--	--	--	--	--	--	--	--	--	--	--	--	--	--	--	--	--	--	--	--	--	--	--	--	--	--	--	--	--	--	--	--	--	--	--	--	--	--	--	--	--	--	--	--	--	--	--	--	--	--	--	--	--	--	--	--	--	--	--	--	--	--	--	--	--	--	--	--	--	--	--	--	--	--	--	--	--	--	--	--	--	--	--	--	--	--	--	--	--	--	--	--	--	--	--	--	--	--	--	--	--	--	--	--	--	--	--	--	--	--	--	--	--	--	--	--	--	--	--	--	--	--	--	--	--	--	--	--	--	--	--	--	--	--	--	--	--	--	--	--	--	--	--	--	--	--	--	--	--	--	--	--	--	--	--	--	--	--	--	--	--	--	--	--	--	--	--	--	--	--	--	--	--	--	--	--	--	--	--	--	--	--	--	--	--	--	--	--	--	--	--	--	--	--	--	--	--	--	--	--	--	--	--	--	--	--	--	--	--	--	--	--	--	--	--	--	--	--	--	--	--	--	--	--	--	--	--	--	--	--	--	--	--	--	--	--	--	--	--	--	--	--	--	--	--	--	--	--	--	--	--	--	--	--	--	--	--	--	--	--	--	--	--	--	--	--	--	--	--	--	--	--	--	--	--	--	--	--	--	--	--	--	--	--	--	--	--	--	--	--	--	--	--	--	--	--



CHECK ALL DIMENSIONS ON SITE.
REFER ANY DISCREPANCIES TO THE ARCHITECT BEFORE PROCEEDING
WITH THE WORKS