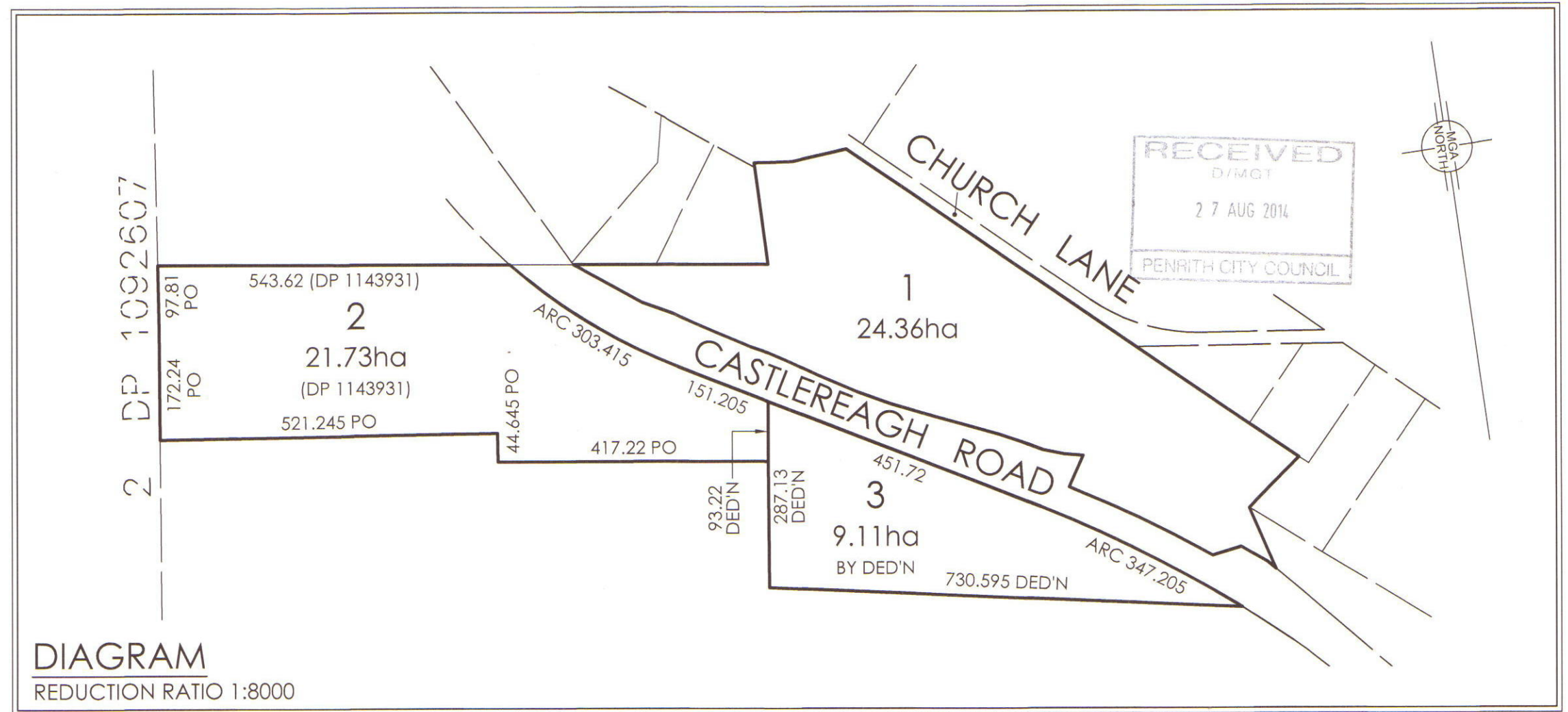
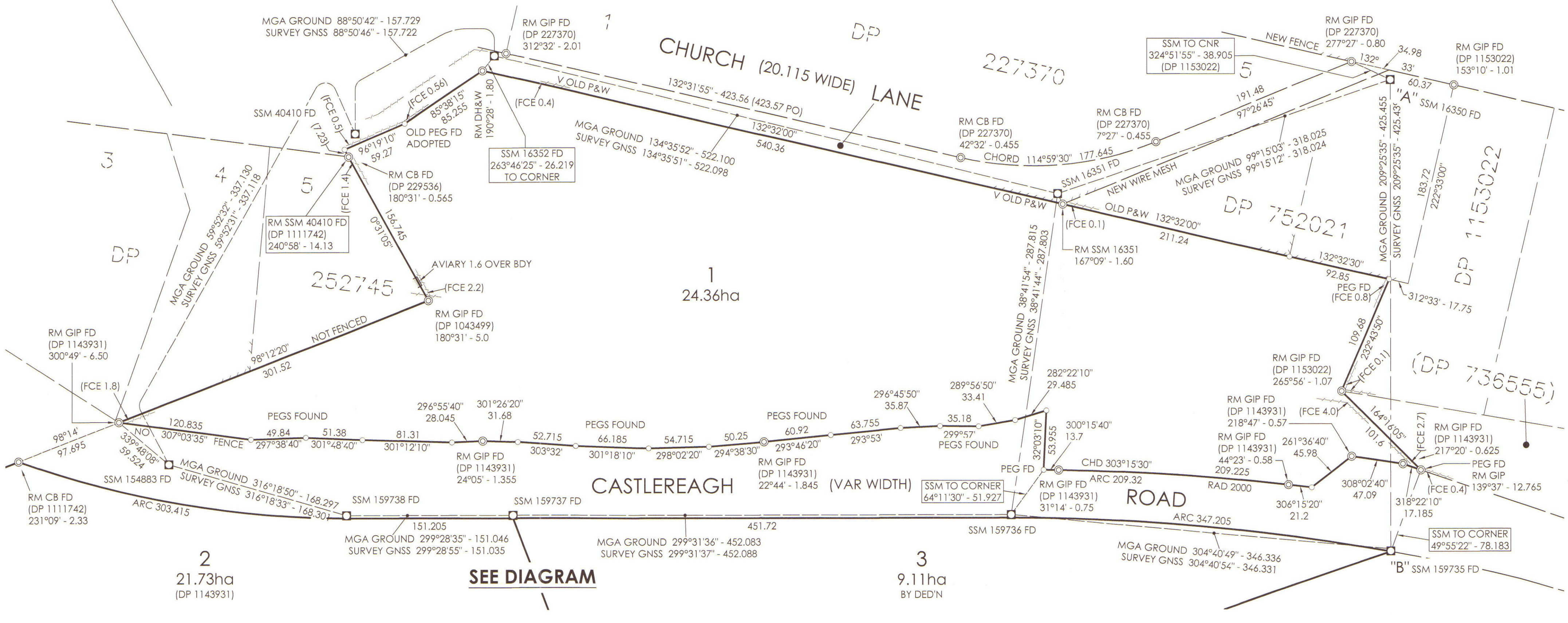


MGA CO-ORDINATES ZONE 56 SOURCE SCIMS 23-10-2012										
MARK	STATUS	EASTING	NORTHING	CLASS	ORDER	CSF	AHD	CLASS	ORDER	ORIGIN
SSM 154883	F	284 932.419	6269 523.926	C	4	1.000 163	20	U	U	SCIMS
SSM 159735	F	285 858.481	6268 907.938	C	4	1.000 157	30	U	U	SCIMS
SSM 159736	F	285 573.630	6269 105.033	C	4	1.000 158	30	U	U	SCIMS
SSM 159737	F	285 180.198	6269 327.868	C	4	1.000 162	20	U	U	SCIMS
SSM 159738	F	285 048.682	6269 402.205	C	4	1.000 163	20	U	U	SCIMS
SSM 16350	F	286 067.542	6269 278.561	B	2	1.000 153	45.264	LB	L2	SCIMS
SSM 16351	F	285 753.605	6269 329.693	B	2	1.000 155	46.723	LB	L2	SCIMS
SSM 16352	F	285 381.784	6269 696.331	B	2	1.000 158	35.200	LB	L2	SCIMS
SSM 40410	F	285 224.062	6269 693.151	B	2	1.000 159	39	U	U	SCIMS



FILE COPY



Surveyor :  
Matthew Charles Freeburn  
Date of Survey : 24-10-2012  
Surveyor's Ref : 32698-06

PLAN OF SUBDIVISION OF  
LOTS 109 & 110 IN DP 1143931

LGA: PENRITH  
Locality : CRANEBROOK  
Subdivision No:  
Lengths are in metres. Reduction Ratio 1:2500

Registered

DP1180473

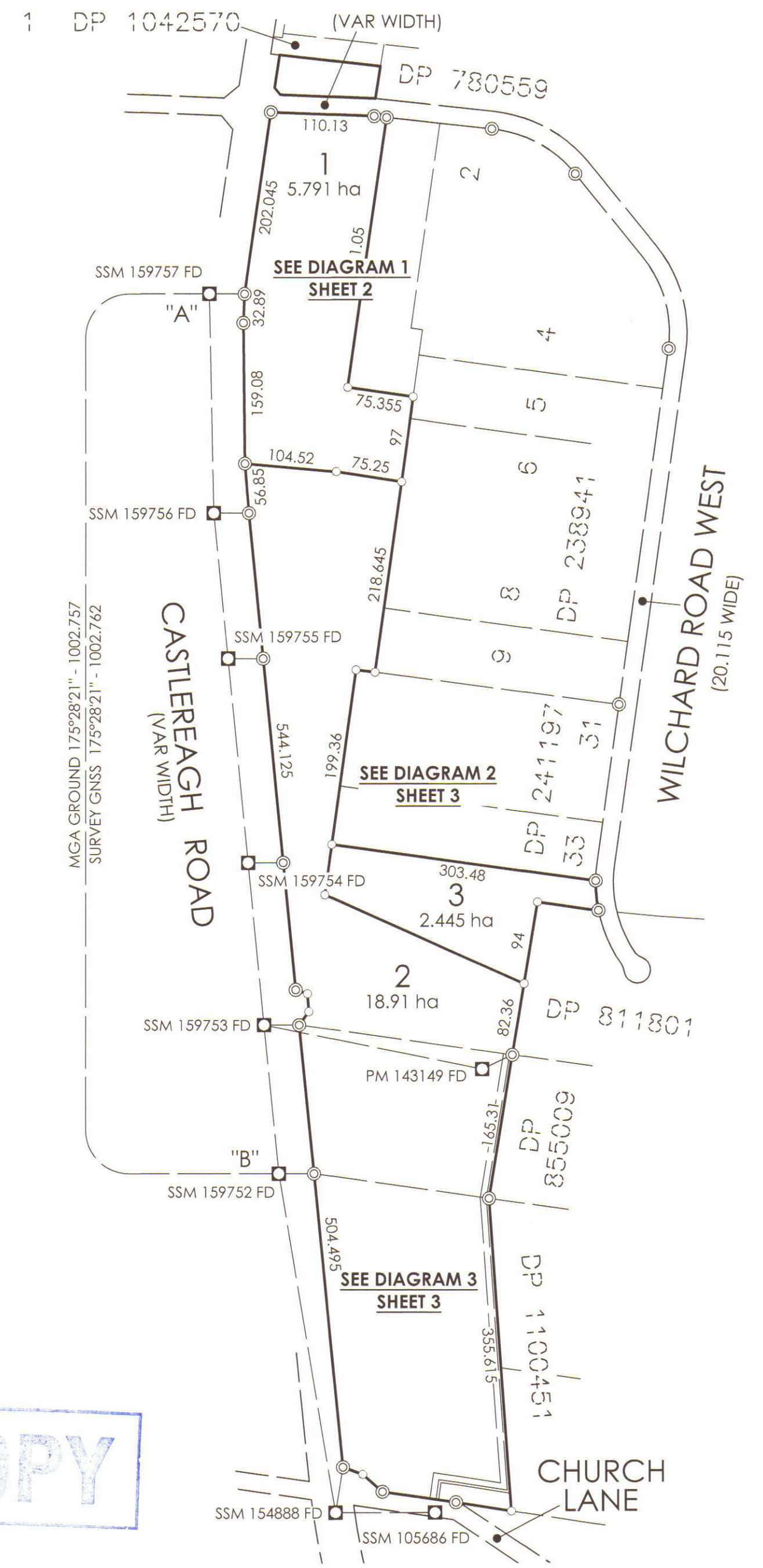
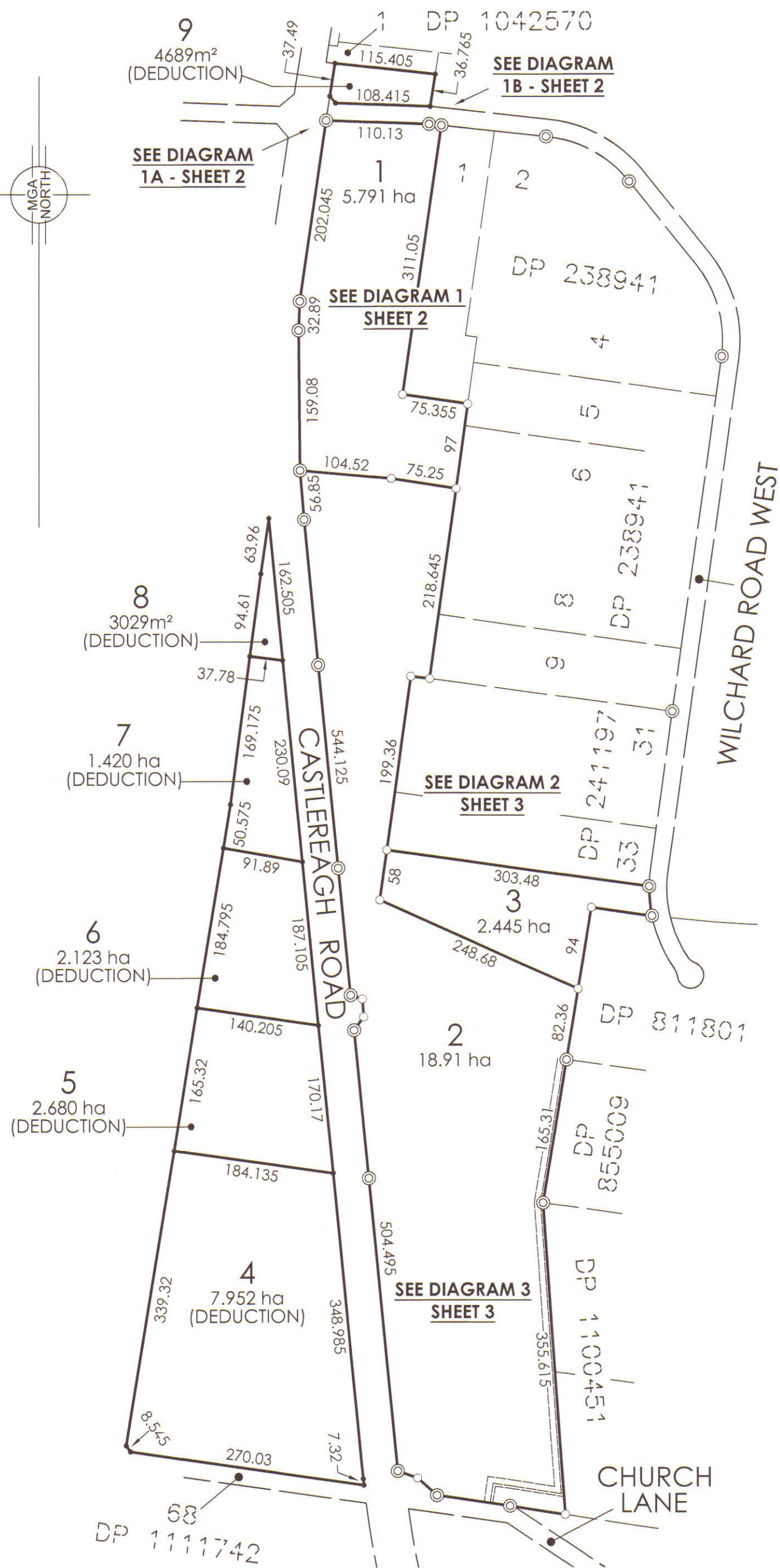


DIAGRAM SHOWING  
MGA CONNECTIONS  
REDUCTION RATIO 1:5000

MGA SSM/PM CONNECTIONS					
MARK	MARK	BEARING	DISTANCE	METHOD	
SSM 105686	SSM 154888	276°37'04"	120.391	MGA GROUND	
"	"	276°37'18"	120.398	SURVEY GNSS	
SSM 154888	SSM 159752	354°28'54"	361.632	MGA GROUND	
"	"	354°28'50"	361.625	SURVEY GNSS	
SSM 159752	SSM 159753	354°24'22"	170.303	MGA GROUND	
"	"	354°24'29"	170.302	SURVEY GNSS	
SSM 159753	SSM 159754	354°19'07"	185.734	MGA GROUND	
"	"	354°19'01"	185.735	SURVEY GNSS	
SSM 159754	SSM 159755	354°18'03"	232.054	MGA GROUND	
"	"	354°18'02"	232.058	SURVEY GNSS	
SSM 159755	SSM 159756	354°21'57"	166.420	MGA GROUND	
"	"	354°22'01"	166.423	SURVEY GNSS	
SSM 159756	SSM 159757	358°53'53"	248.837	MGA GROUND	
"	"	358°53'51"	248.834	SURVEY GNSS	
SSM 159753	PM 143149	98°37'00"	244.343	MGA GROUND	
"	"	98°37'10"	244.349	SURVEY GNSS	

**FILE COPY**

MGA CO-ORDINATES ZONE 56 SOURCE SCIMS 23-10-2012 (CONTINUED ON SHEET 2)

MARK	STATUS	EASTING	NORTHING	CLASS	ORDER	CSF	AHD	CLASS	ORDER	ORIGIN
PM 143149	F	284 838.924	6270 551.891	B	3	1.000 164	19.475	B	5	SCIMS
SSM 105686	F	284 768.293	6270 045.092	C	4	1.000 164	20	U	U	SCIMS
SSM 154888	F	284 648.684	6270 058.969	C	4	1.000 165	20	U	U	SCIMS
SSM 159752	F	284 613.902	6270 418.985	C	4	1.000 165	20	U	U	SCIMS
SSM 159753	F	284 597.299	6270 588.505	C	4	1.000 165	20	U	U	SCIMS

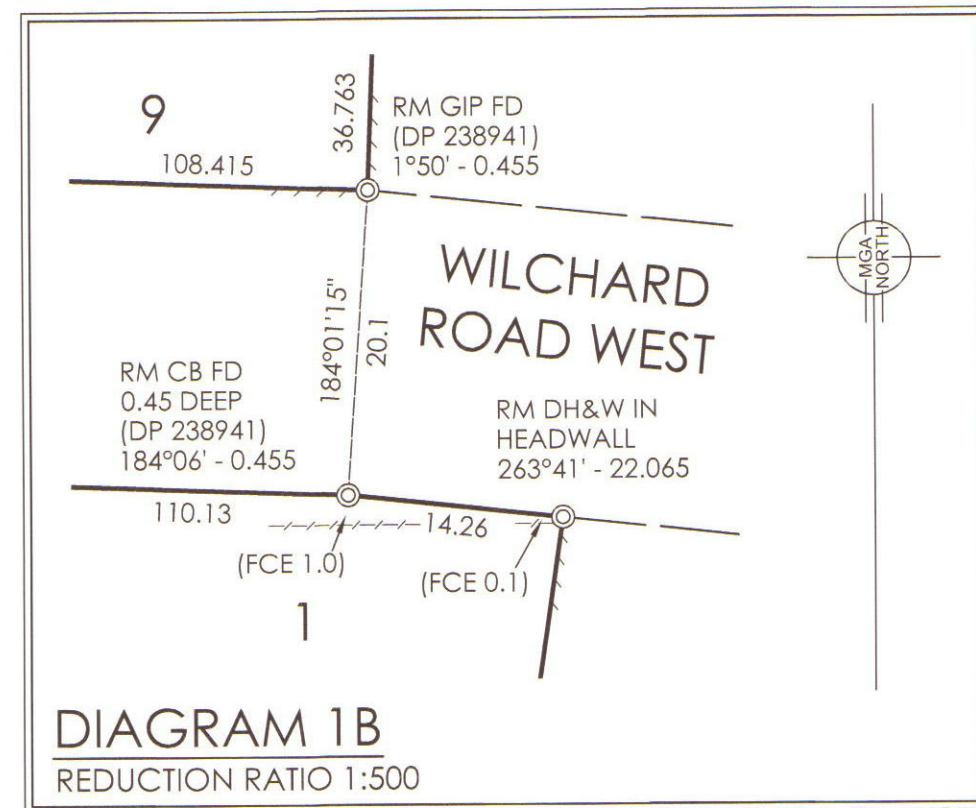
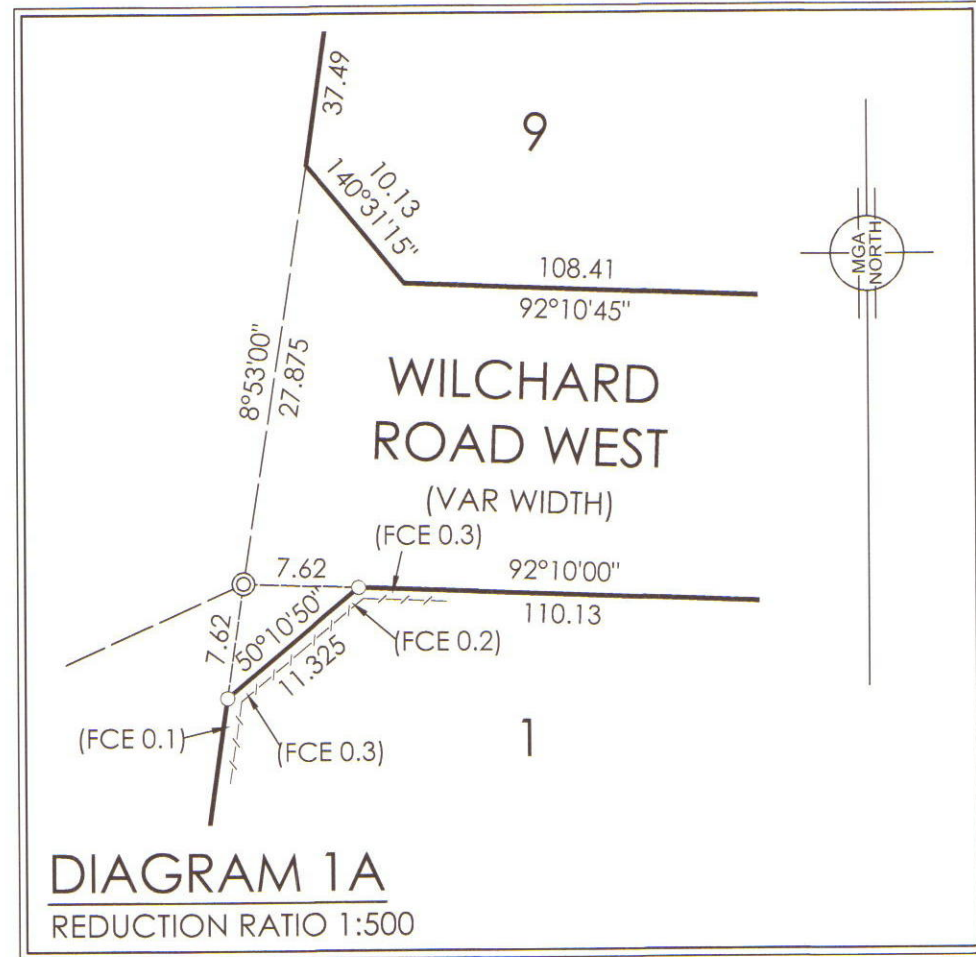
Surveyor :  
Matthew Charles Freeburn  
Date of Survey : 30-11-2012  
Surveyor's Ref : 32 698 - 09

PLAN OF SUBDIVISION OF LOTS 70, 72 & 74  
IN DP 1111742, LOTS 112, 113 & 114 IN DP 1143931  
AND LOT 2 IN DP 1042570

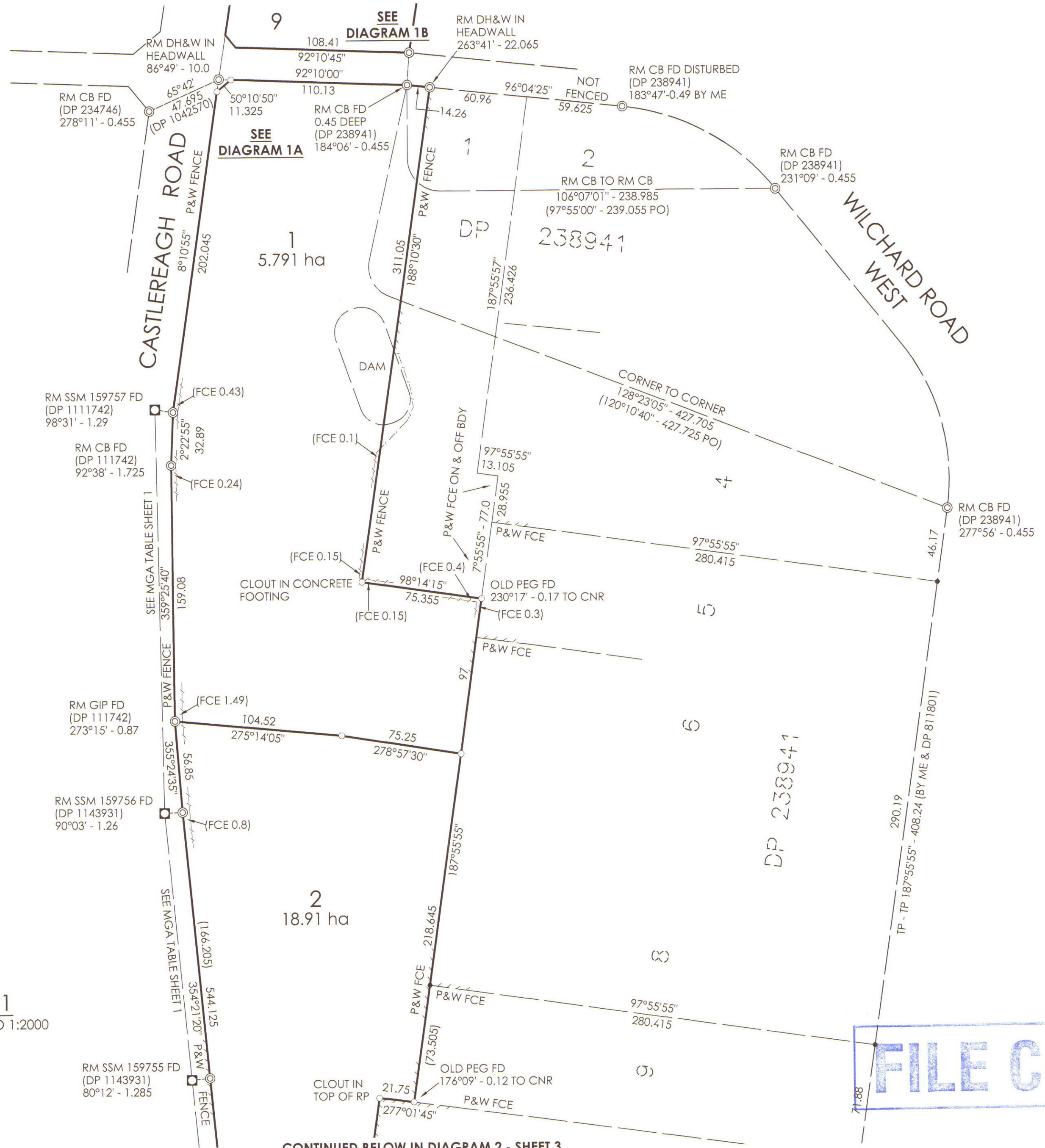
LGA: PENRITH  
Locality: CASTLEREAGH  
Subdivision No:  
Lengths are in metres. Reduction Ratio 1:5000

Registered

**DP1181666**



**DIAGRAM 1**  
REDUCTION RATIO 1:2000



**FILE COPY**

CONTINUED BELOW IN DIAGRAM 2 - SHEET 3

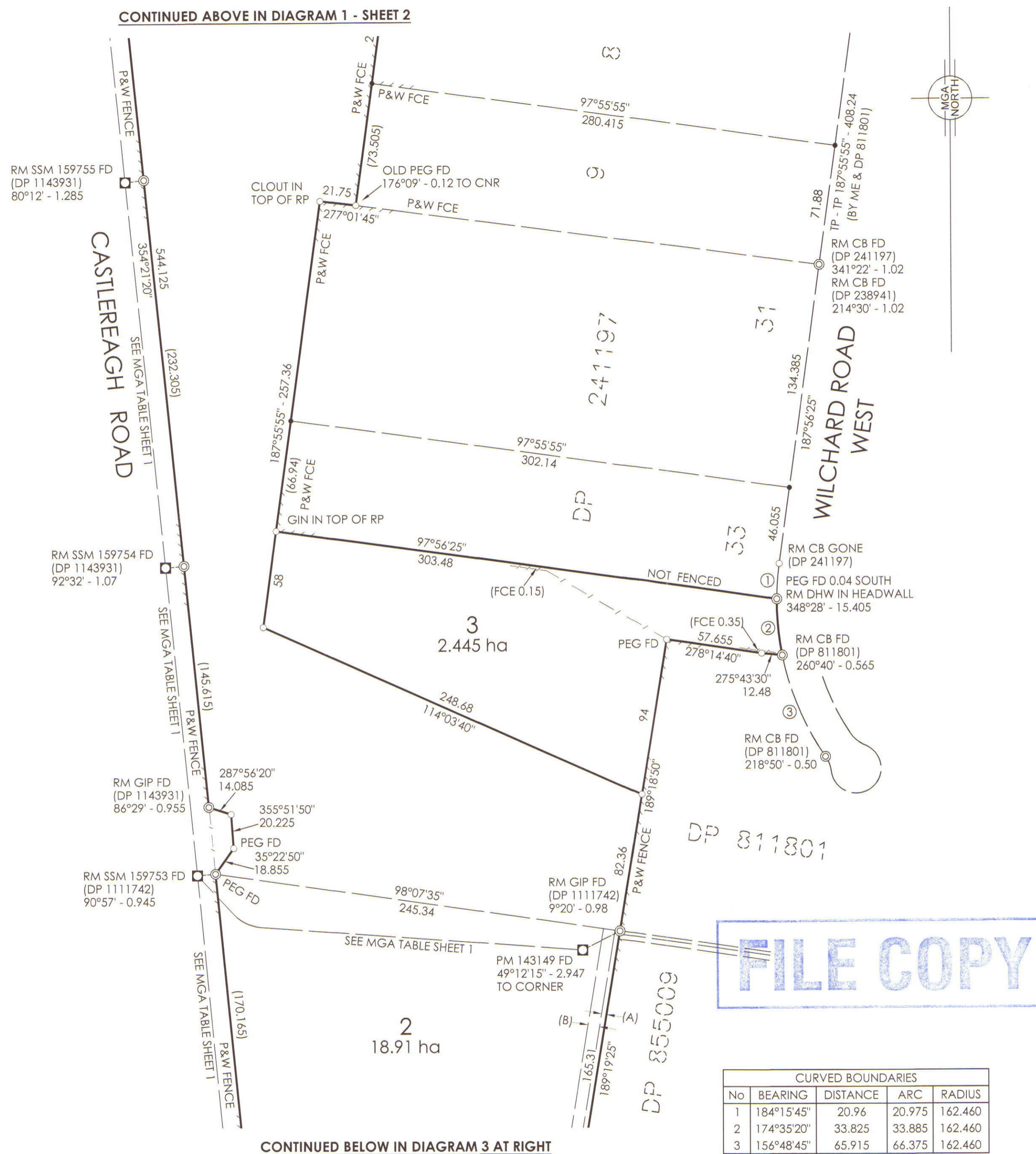
MGA CO-ORDINATES ZONE 56 SOURCE SCIMS 23-10-2012 (CONTINUED FROM SHEET 1)										
MARK	STATUS	EASTING	NORTHING	CLASS	ORDER	CSF	AHD	CLASS	ORDER	ORIGIN
SSM 159754	F	284 578.909	6270 773.357	C	4	1,000 165	20	U	U	SCIMS
SSM 159755	F	284 555.861	6271 004.302	C	4	1,000 165	20	U	U	SCIMS
SSM 159756	F	284 539.520	6271 169.945	C	4	1,000 165	20	U	U	SCIMS
SSM 159757	F	284 534.734	6271 418.777	C	4	1,000 165	20	U	U	SCIMS

Surveyor :  
Matthew Charles Freeburn  
Date of Survey : 30-11-2012  
Surveyor's Ref : 32 698 - 09

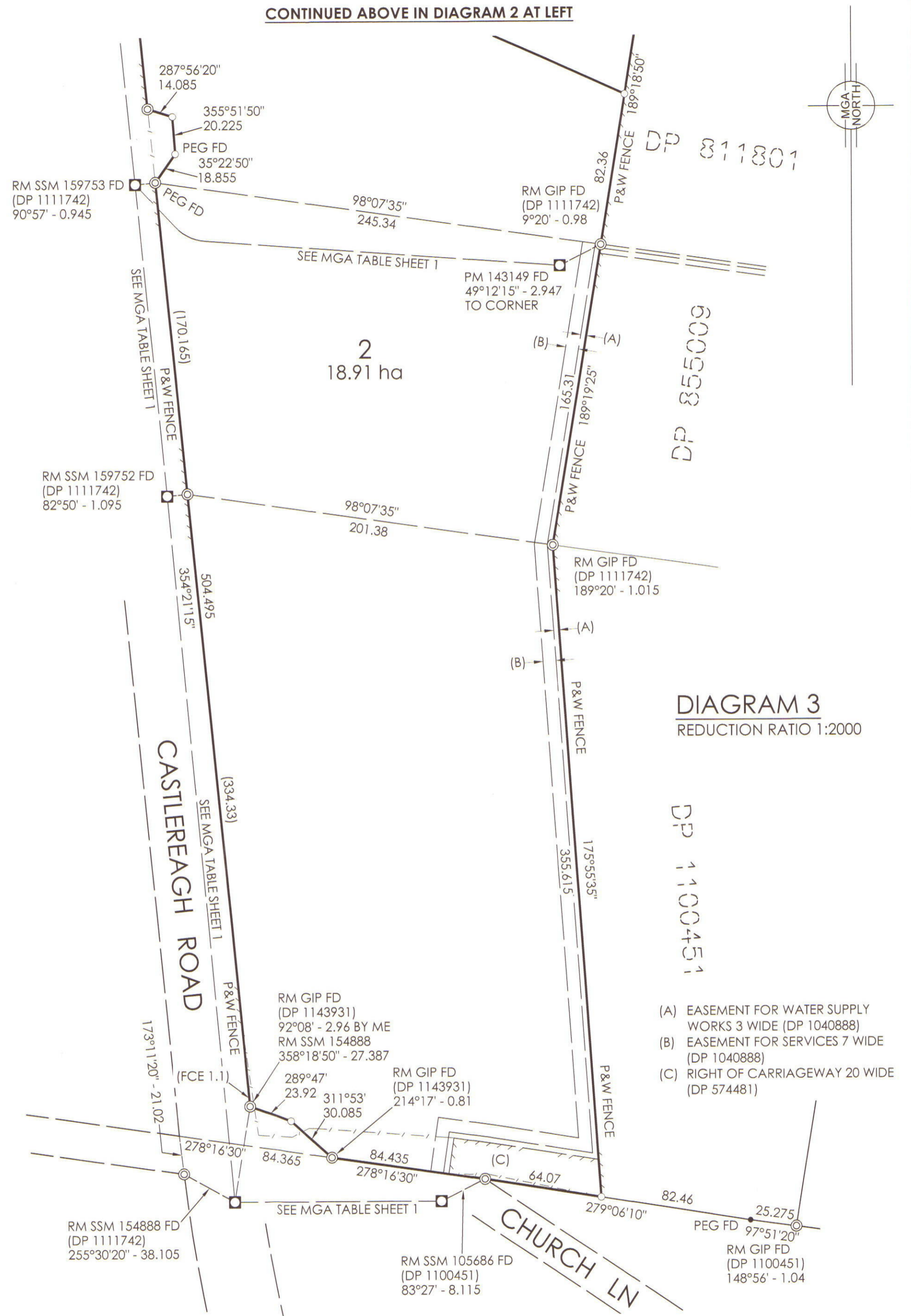
PLAN OF SUBDIVISION OF LOTS 70, 72 & 74  
IN DP 1111742, LOTS 112, 113 & 114 IN DP 1143931  
AND LOT 2 IN DP 1042570

LGA: PENRITH  
Locality: CASTLEREAGH  
Subdivision No:  
Lengths are in metres. Reduction Ratio 1:2000

Registered  
**DP1181666**



CURVED BOUNDARIES				
No	BEARING	DISTANCE	ARC	RADIUS
1	184°15'45"	20.96	20.975	162.460
2	174°35'20"	33.825	33.885	162.460
3	156°48'45"	65.915	66.375	162.460



**DIAGRAM 3**  
REDUCTION RATIO 1:2000

- (A) EASEMENT FOR WATER SUPPLY WORKS 3 WIDE (DP 1040888)
- (B) EASEMENT FOR SERVICES 7 WIDE (DP 1040888)
- (C) RIGHT OF CARRIAGEWAY 20 WIDE (DP 574481)

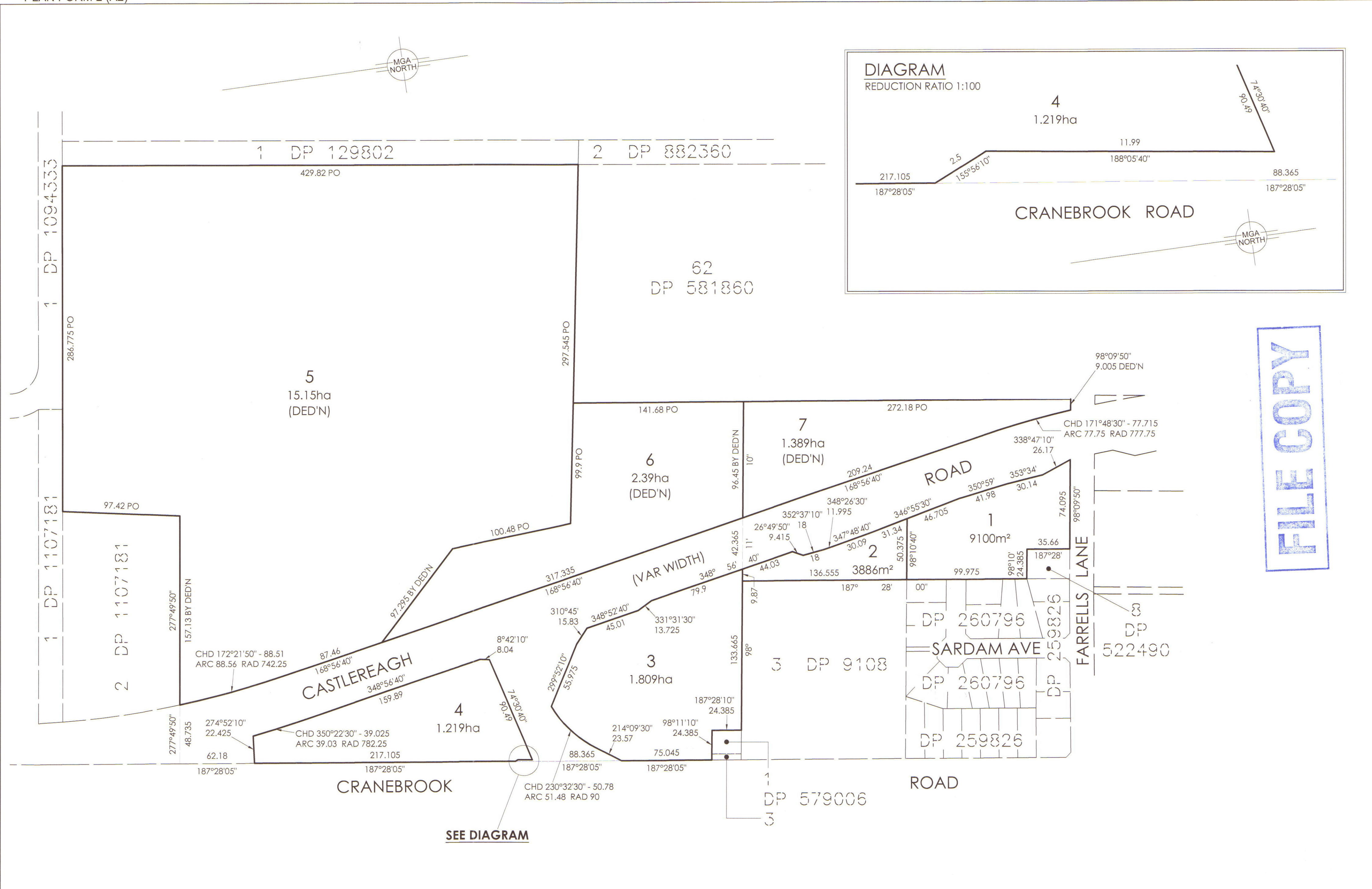
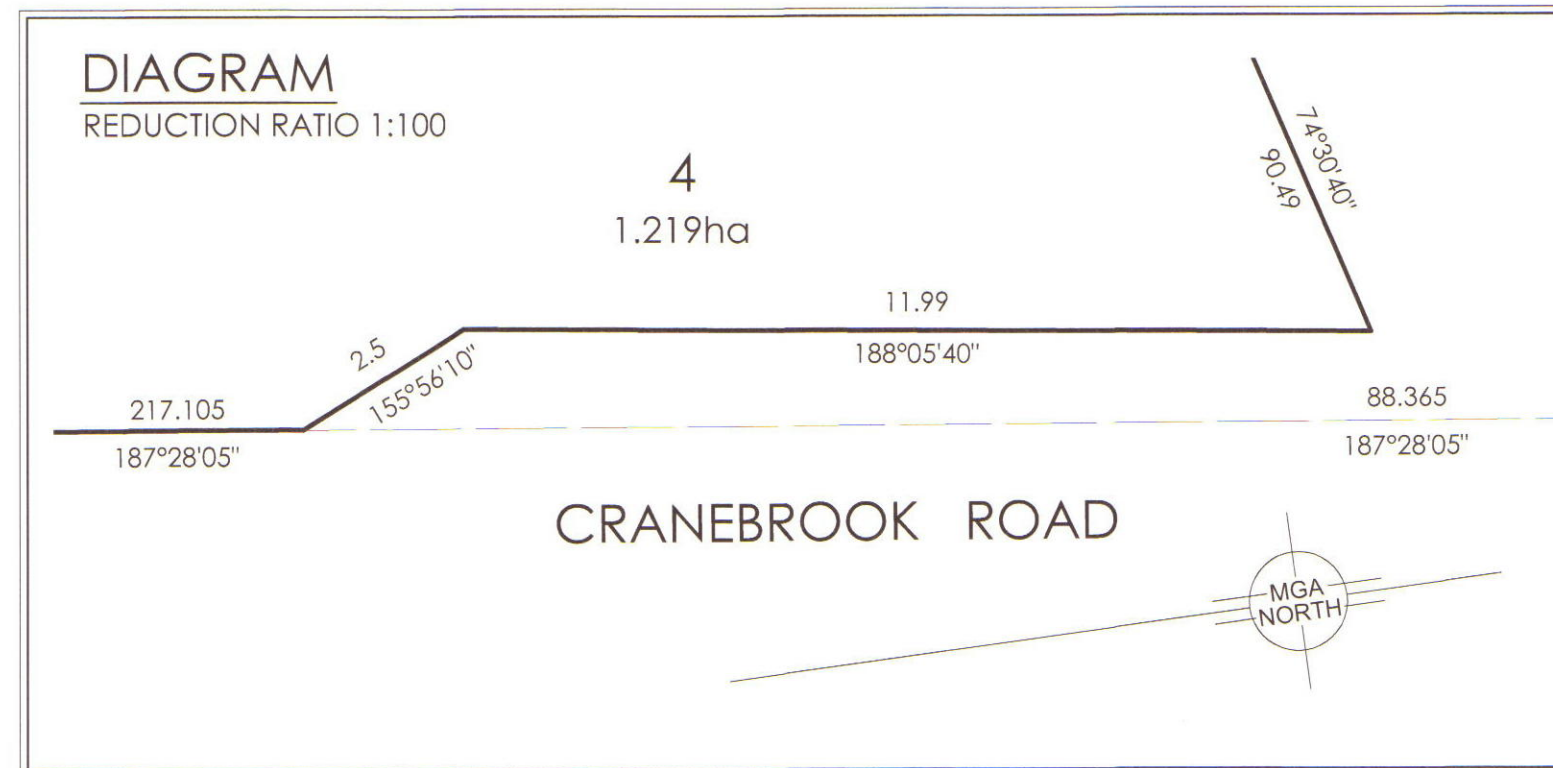
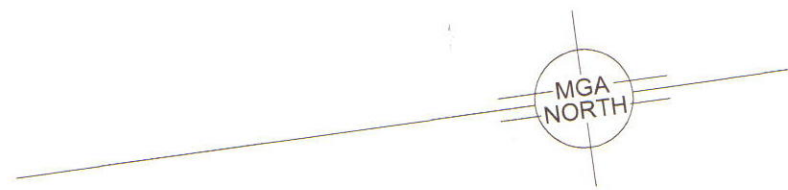
Surveyor :  
Matthew Charles Freeburn  
Date of Survey : 30-11-2012  
Surveyor's Ref : 32 698 - 09

PLAN OF SUBDIVISION OF LOTS 70, 72 & 74  
IN DP 1111742, LOTS 112, 113 & 114 IN DP 1143931  
AND LOT 2 IN DP 1042570

LGA: PENRITH  
Locality : CASTLEREAGH  
Subdivision No:  
Lengths are in metres. Reduction Ratio 1:2000

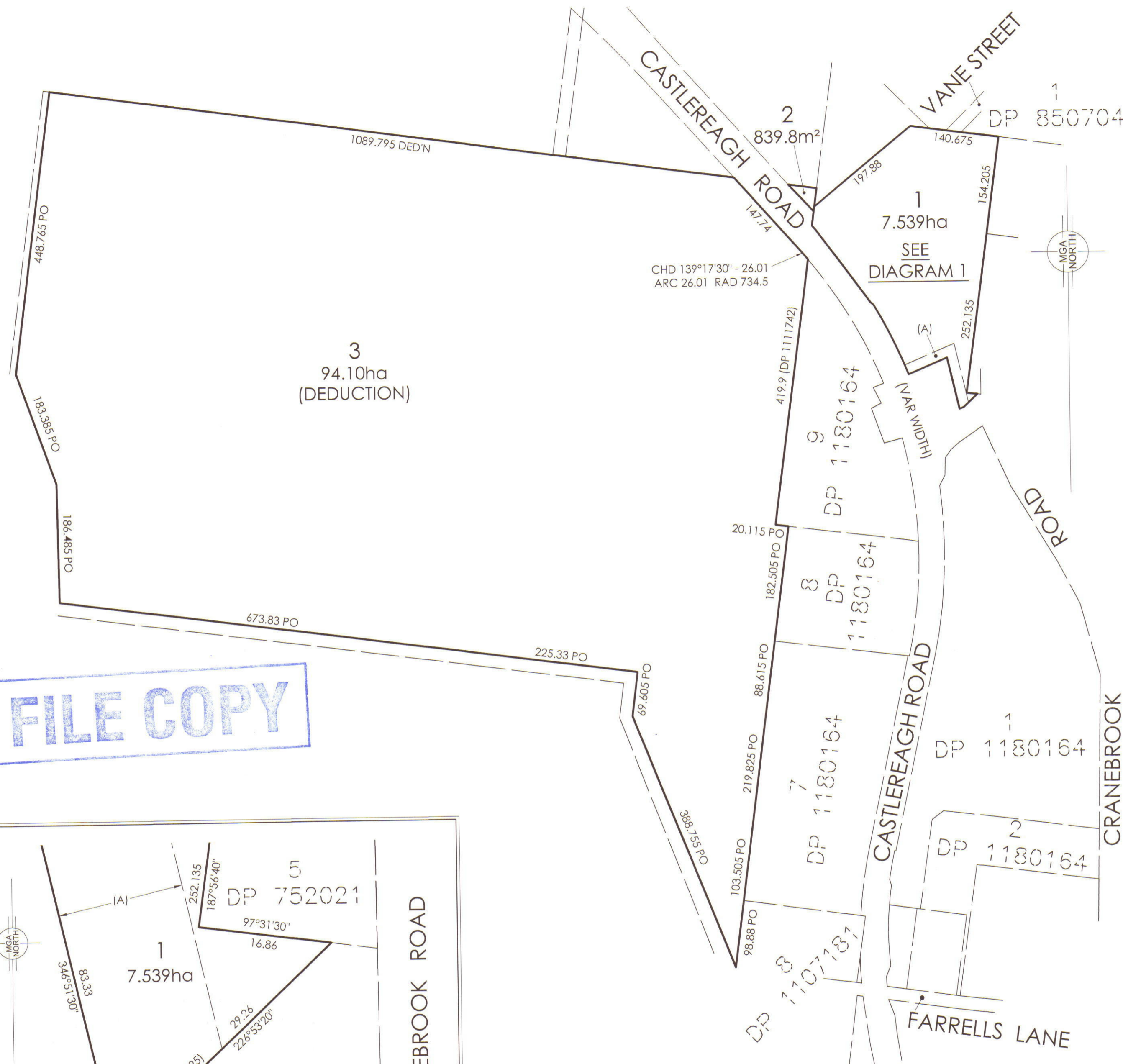
Registered

**DP1181666**

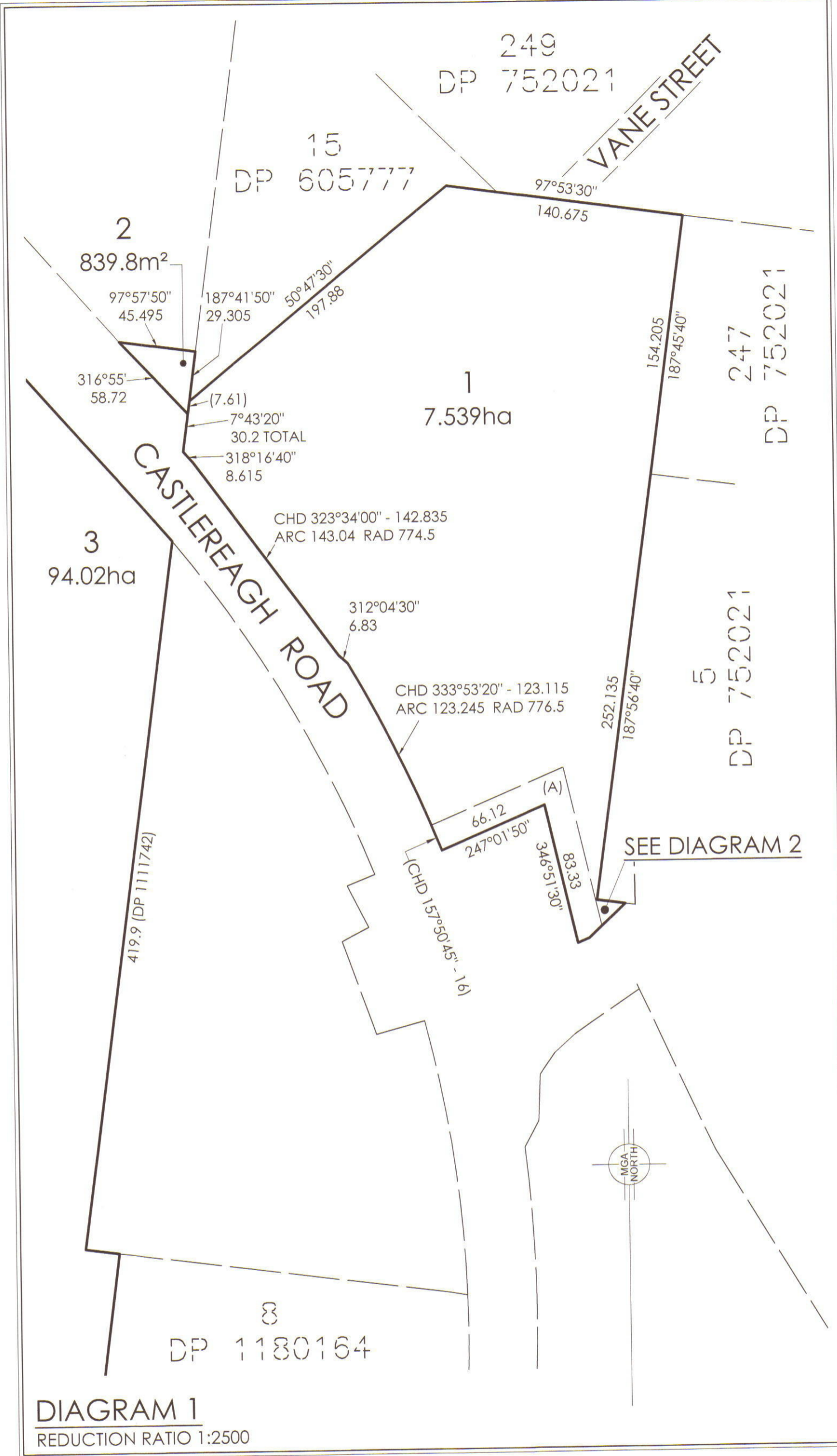
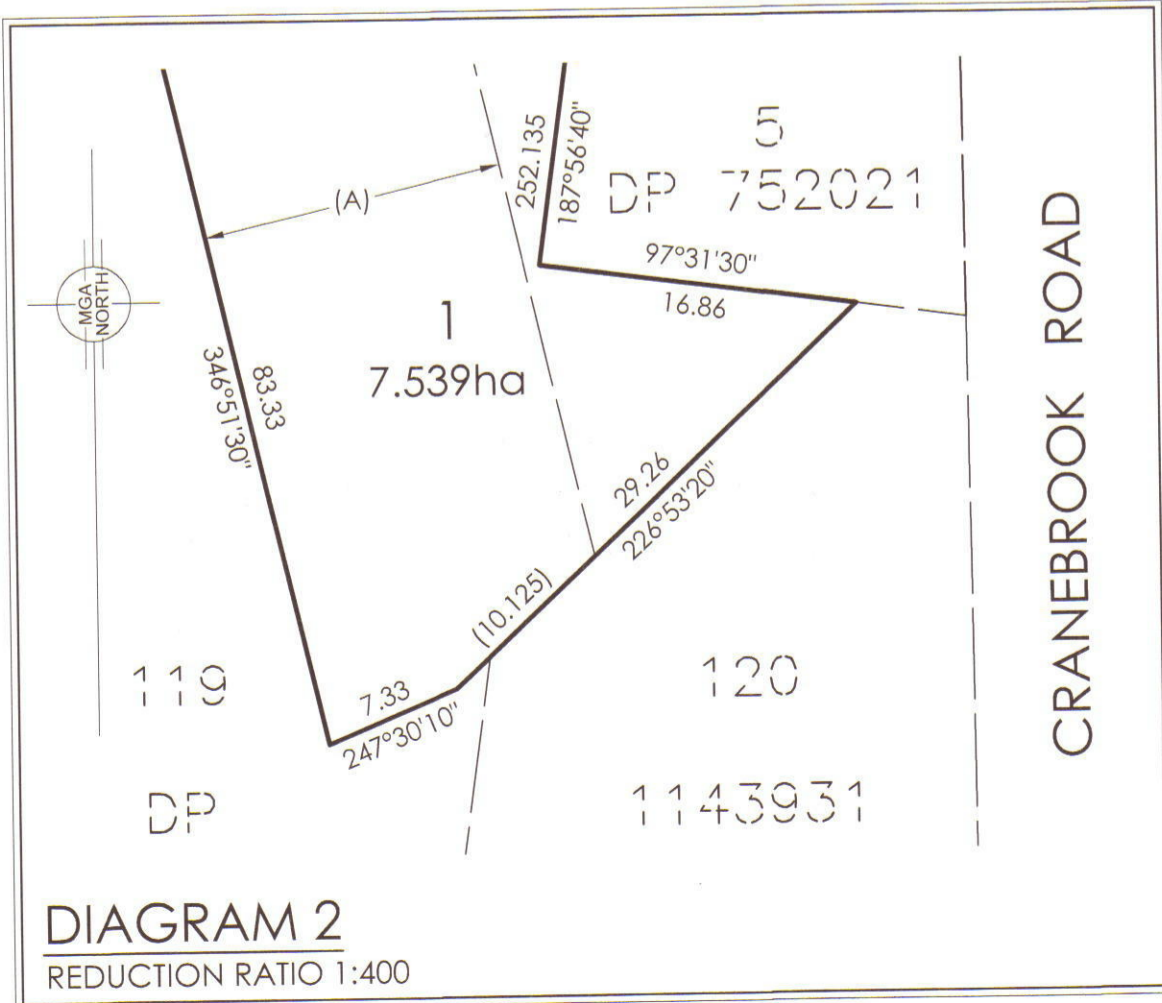


**FILE COPY**

Surveyor : Matthew Charles Freeburn Date of Plan : 02-05-2013 Surveyor's Ref : 32 698 - 02	PLAN OF SUBDIVISION OF LOTS 101 & 102 IN DP 1143931 AND LOTS 3 & 5 IN DP 1107181	LGA: PENRITH Locality : CASTLEREAGH Subdivision No: Lengths are in metres. Reduction Ratio 1:2000	Registered     <b>DP1181667</b>
---	--	--	--



FILE COPY



(A) EASEMENT FOR FLOOD EVACUATION 16 WIDE

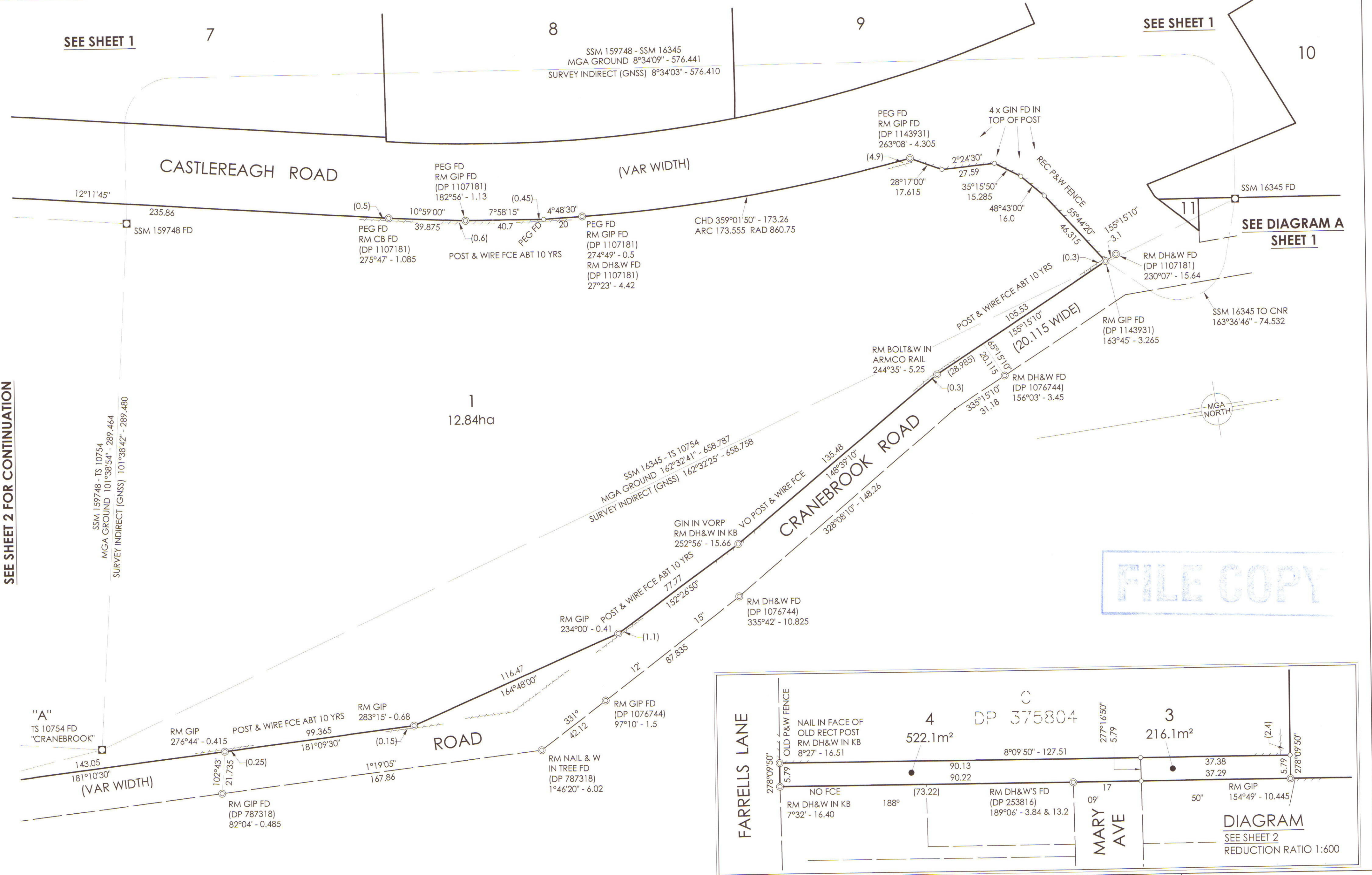
Surveyor :  
 Matthew Charles Freeburn  
 Date of Plan : 05-04-2013  
 Surveyor's Ref : 32 698 - 07

PLAN OF SUBDIVISION OF  
 LOT 107 IN DP 1143931,  
 LOTS 10 & 11 IN DP 1180164, LOT 1 IN DP 882355  
 AND LOTS 1, 2 & 3 IN DP 116082

LGA: PENRITH  
 Locality: CASTLEREAGH  
 Subdivision No:  
 Lengths are in metres. Reduction Ratio 1:5000

Registered

DP1181665



SEE SHEET 2 FOR CONTINUATION

SEE SHEET 1

SEE SHEET 1

SEE DIAGRAM A SHEET 1

FILE COPY

DIAGRAM  
SEE SHEET 2  
REDUCTION RATIO 1:600

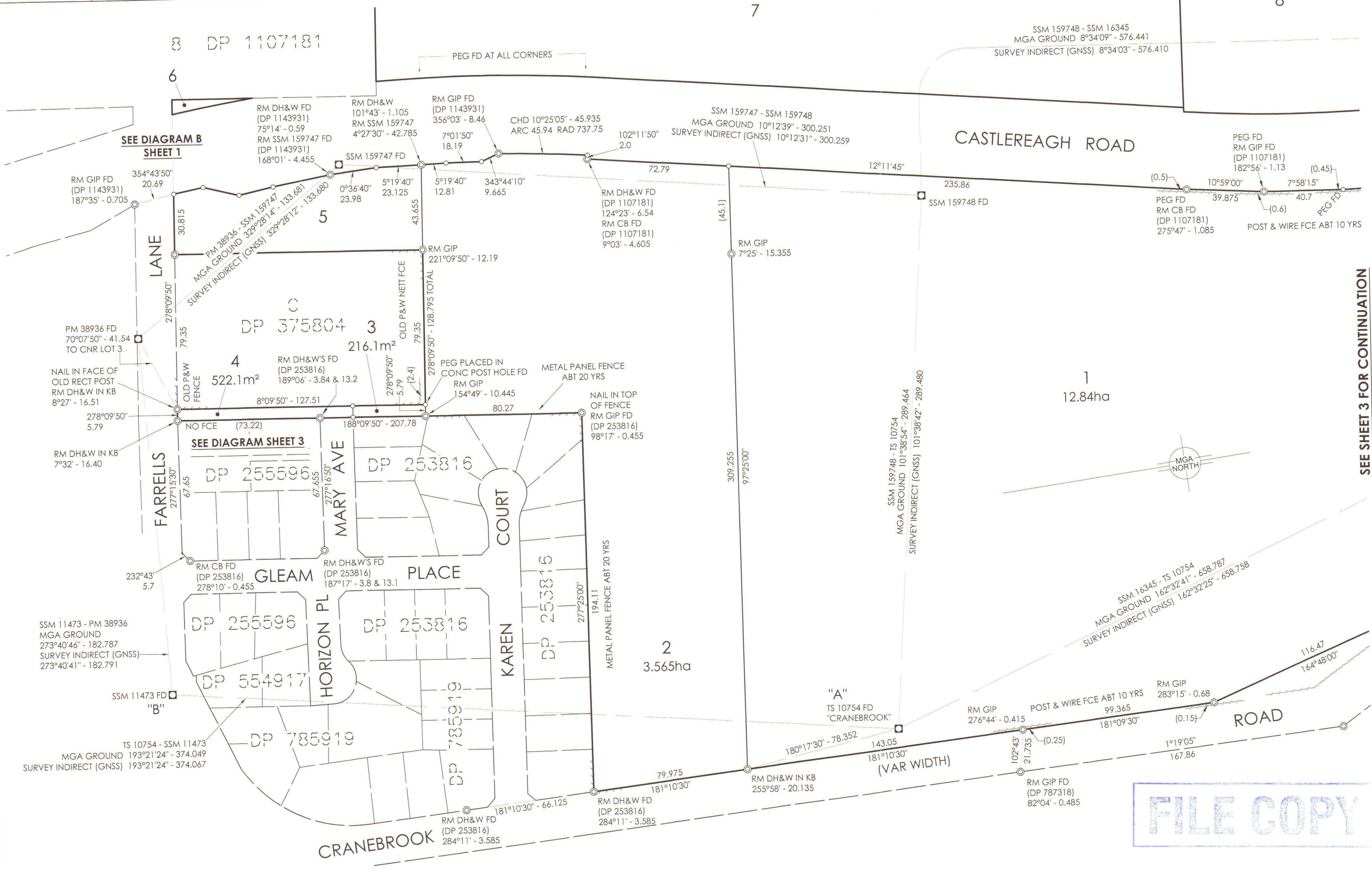
Surveyor :  
Matthew Charles Freeburn  
Date of Survey : 10-01-2013  
Surveyor's Ref : 32 698 - 01

PLAN OF SUBDIVISION OF LOTS 104, 105 & 106 IN  
DP 1143931, LOT 10 IN DP 1107181, LOT 3 IN  
DP 235324 AND LOT 1 IN DP 519892

LGA: PENRITH  
Locality : CRANEBROOK  
Subdivision No:  
Lengths are in metres. Reduction Ratio 1:1250

Registered

DP1180164



SEE SHEET 3 FOR CONTINUATION

FILE COPY

MGA CO-ORDINATES ZONE 56 SOURCE SCIMS 03-04-2012										
MARK	STATUS	EASTING	NORTHING	CLASS	ORDER	CSF	AHD	CLASS	ORDER	ORIGIN
SSM 11473	F	286 662.365	6267 256.953	B	2	1.000 153	23.215	LB	L2	SCIMS
SSM 16345	F	286 551.147	6268 249.487	B	2	1.000 154	26.182	LB	L2	SCIMS
SSM 159747	F	286 412.009	6267 383.852	C	4	1.000 154	25.62	D	4	SCIMS
SSM 159748	F	286 465.243	6267 679.393	C	4	1.000 154	24.19	D	4	SCIMS
PM 38936	F	286 479.927	6267 268.685	B	2	1.000 155	21.096	LB	L2	SCIMS
TS 10754	F	286 748.789	6267 620.940	B	2	1.000 152	27	U	U	SCIMS

Surveyor :  
 Matthew Charles Freeburn  
 Date of Survey : 10-01-2013  
 Surveyor's Ref : 32 698 - 01

PLAN OF SUBDIVISION OF LOTS 104, 105 & 106 IN  
 DP 1143931, LOT 10 IN DP 1107181, LOT 3 IN  
 DP 235324 AND LOT 1 IN DP 519892

LGA: PENRITH  
 Locality : CRANEBROOK  
 Subdivision No:  
 Lengths are in metres. Reduction Ratio 1:1250

Registered  
**DP1180164**



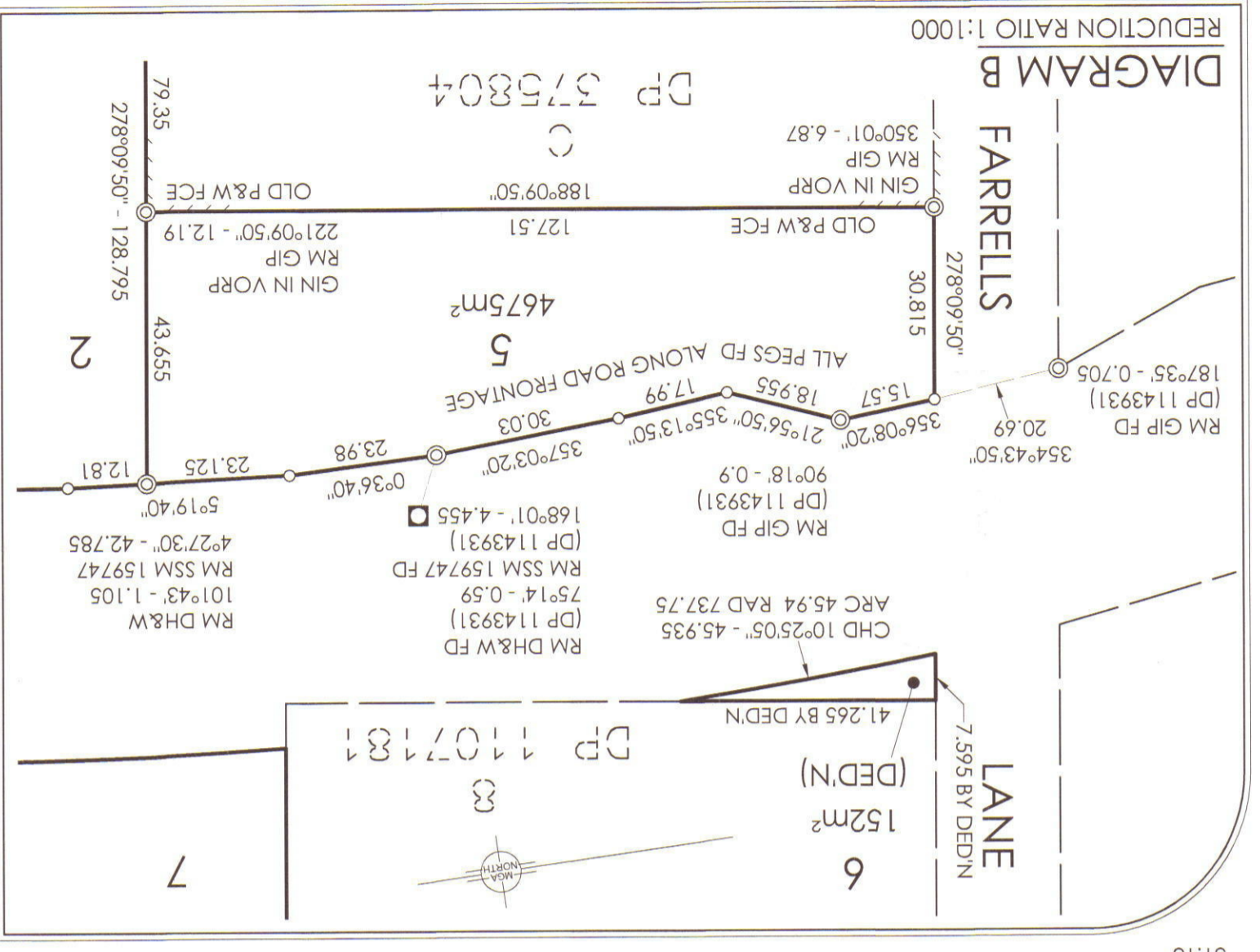
Surveyor: Matthew Charles Freeburn  
 Date of Survey: 10-01-2013  
 Surveyor's Ref: 32 698 - 01

PLAN OF SUBDIVISION OF LOTS 104, 105 & 106 IN DP 1143931, LOT 10 IN DP 1107181, LOT 3 IN DP 235324 AND LOT 1 IN DP 519892

LGA: PENRITH  
 Locality: CRANBROOK  
 Subdivision No:  
 Lengths are in metres. Reduction Ratio 1:2500

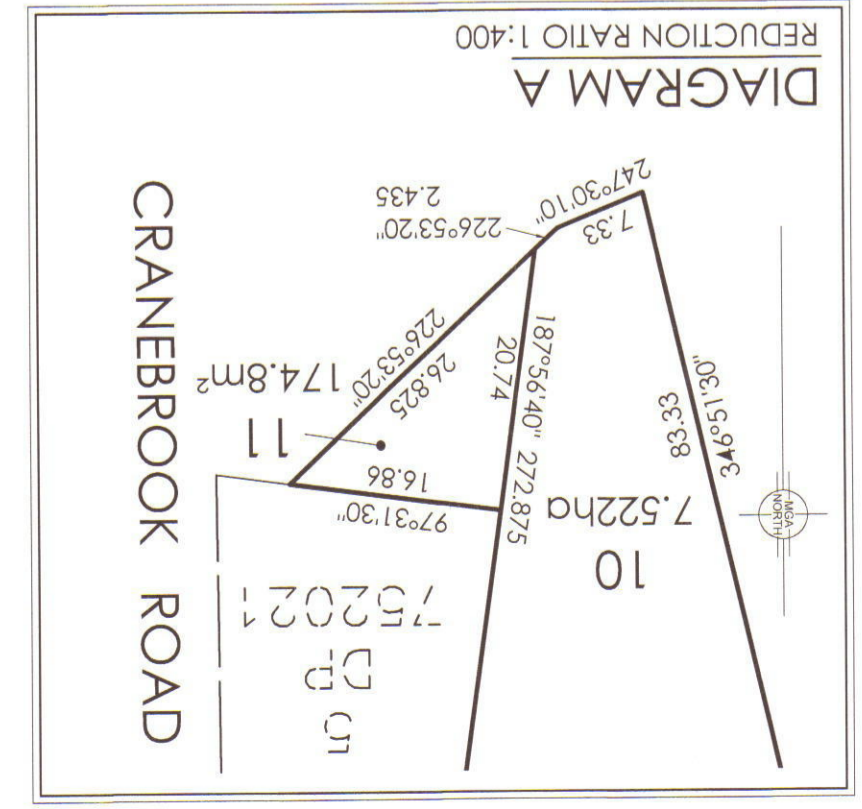
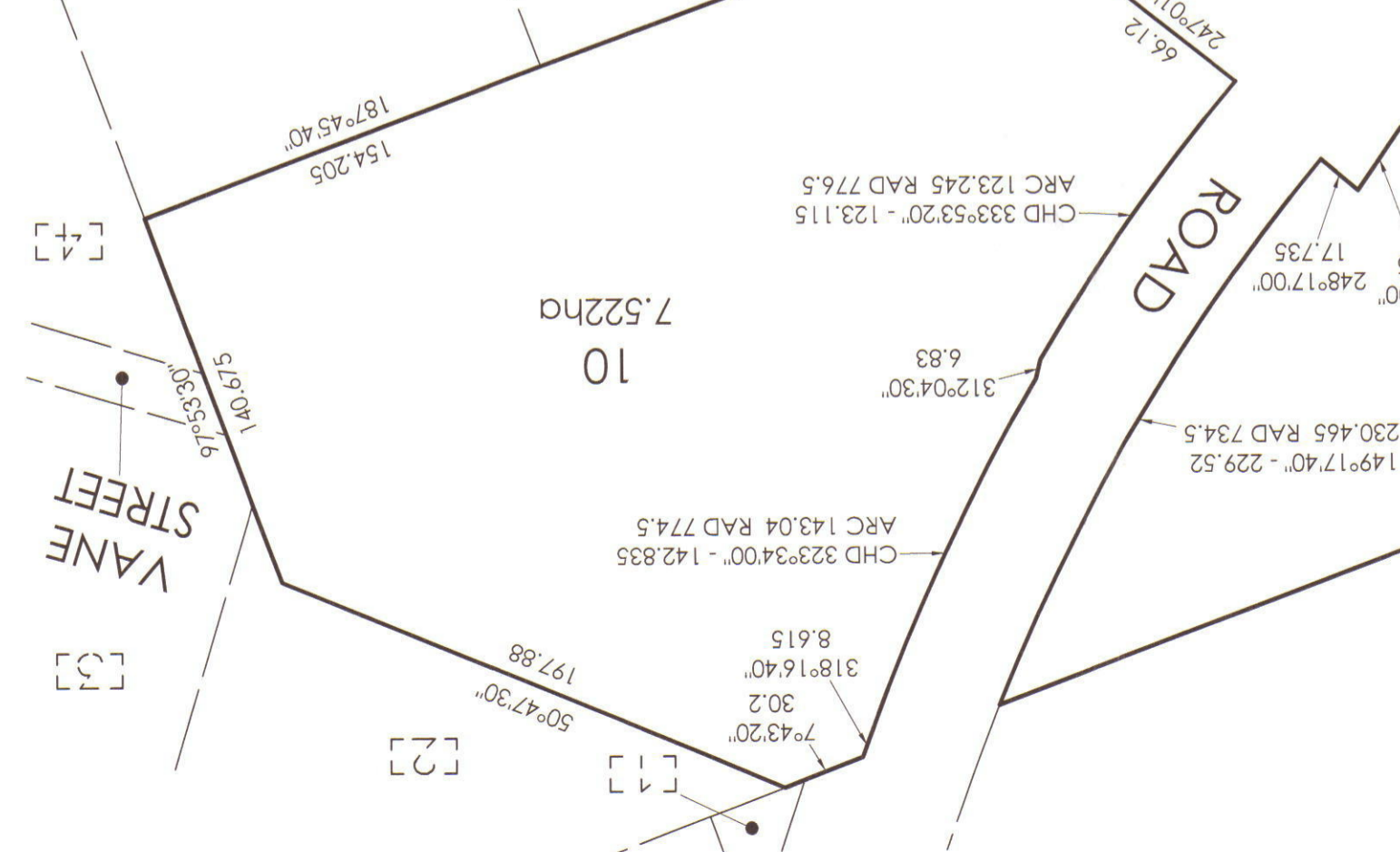
Registered  
 DP1180164

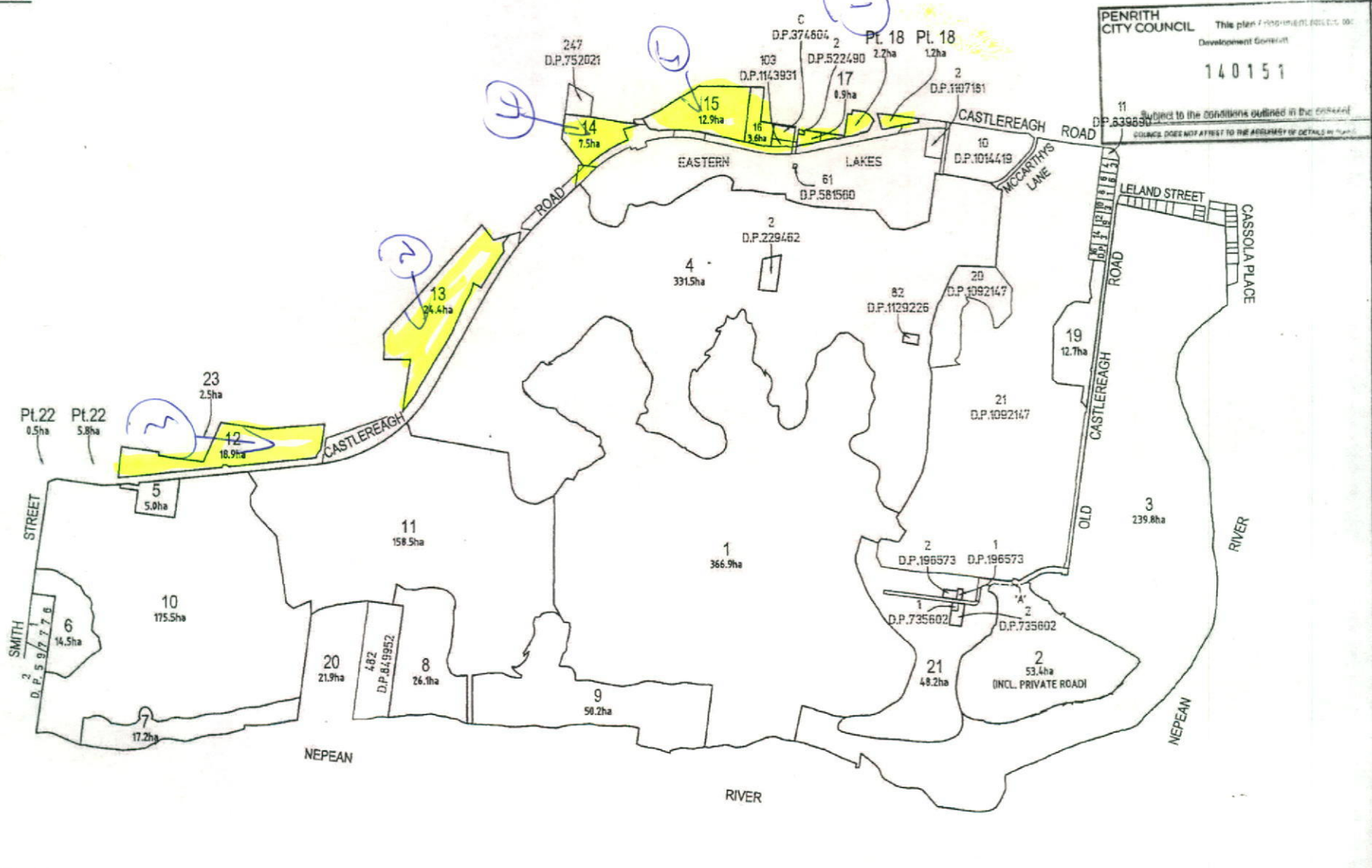
**MARKS AND MGA INFORMATION**  
**SEE SHEETS 2 AND 3 FOR REFERENCE**



DP 1143931	[1]	PT 107
DP 605777	[2]	15
DP 752021	[3]	249
DP 850704	[4]	1

**FILE COPY**





PENRITH CITY COUNCIL This plan is prepared in accordance with the Development Control  
 140151  
 Subject to the conditions outlined in the...  
 COUNCIL DOES NOT ATTEST TO THE ACCURACY OF DETAILS IN THIS PLAN

PLAN NOT FOR LPI NSW INVESTIGATION

PRELIMINARY PLAN ONLY LOT DIMENSIONS AND AREAS SUBJECT TO SURVEY & REGISTRATION OF THE FINAL PLAN AT LPI NSW

'A' - PRIVATE ROAD INCLUDED IN LOT 2 (ROAD AREA 1.9ha)

Surveyor: BENJAMIN MEYER  
 Date of Survey:  
 Surveyor's Ref: 868-13

PLAN OF  
 SUBDIVISION OF VARIOUS LOTS

LGA: PENRITH  
 Locality: CRANEBROOK  
 Subdivision No.  
 Lengths are in metres. Reduction Ratio 1: 15000

Registered

D.P. DRAFT



DRAWN BY: DL, CHECKED BY: R, APPROVED BY: G, DATE: 2014