

EVACUATION DIAGRAM

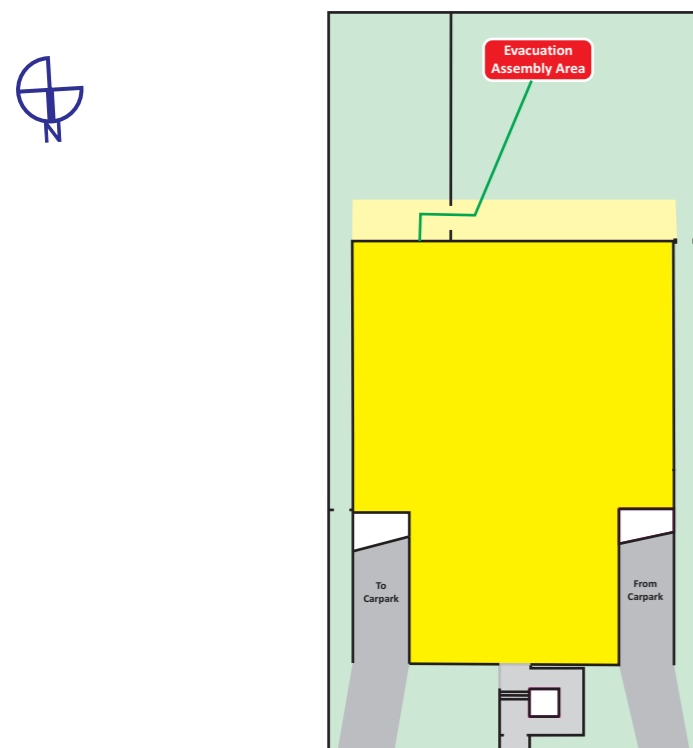


170 Derby Street, PENRITH NSW 2750

EMERGENCY PROCEDURES

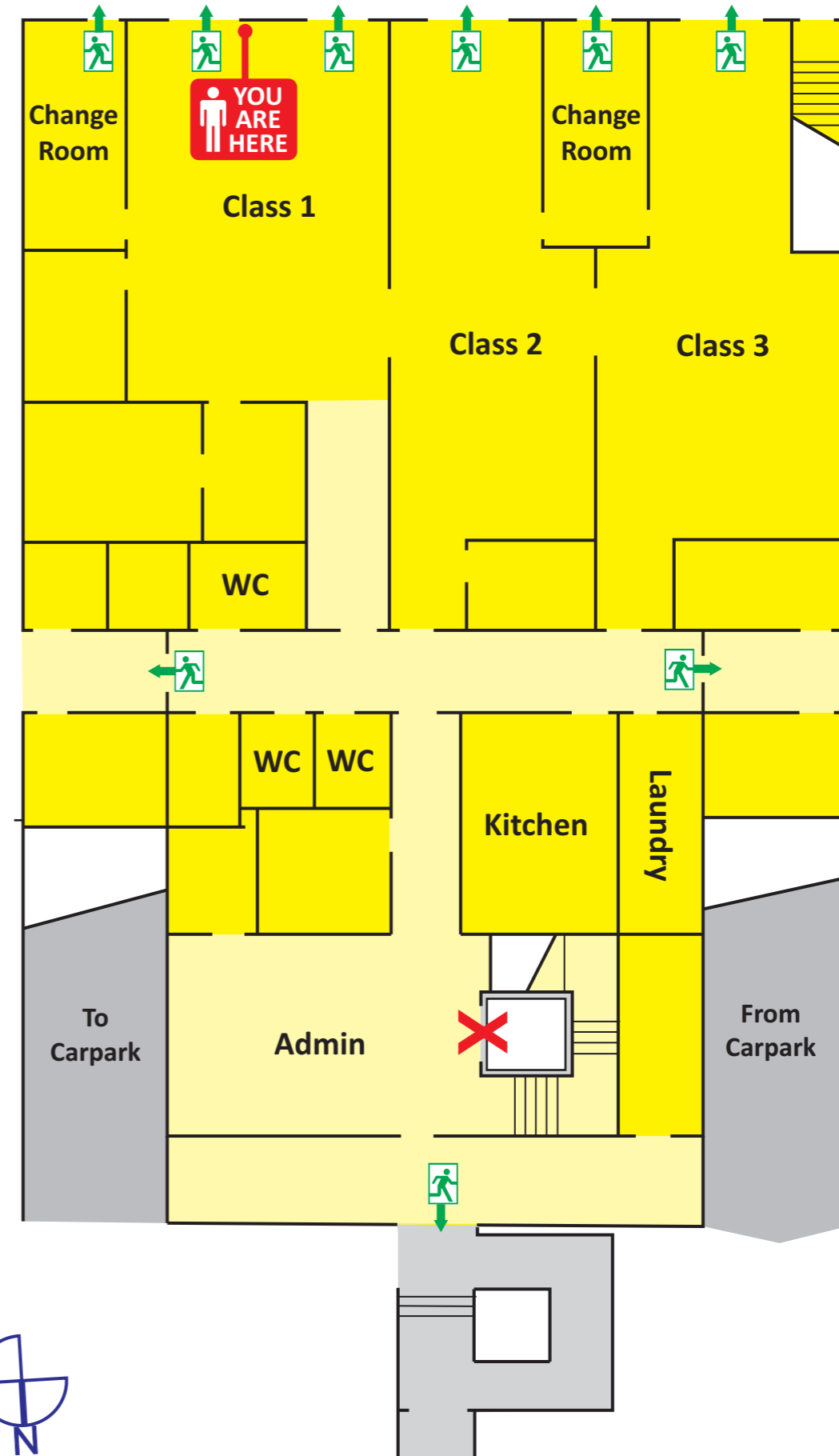
- Remove yourself and others from immediate danger.
- Conduct a headcount, and evacuate children from the room.
- Move to the Evacuation Assembly Area using evacuation ropes and evacuation cots.
- Request for assistance when required.
- Conduct another head count at the Evacuation Assembly Area.
- Remain in control of your group until the 'all clear' is given.

EVACUATION ASSEMBLY AREA LOCATION



LEGEND

- Emergency Exit
- Dry Chemical Extinguisher
- Hose Reel
- Manual Call Point



EVACUATION DIAGRAM

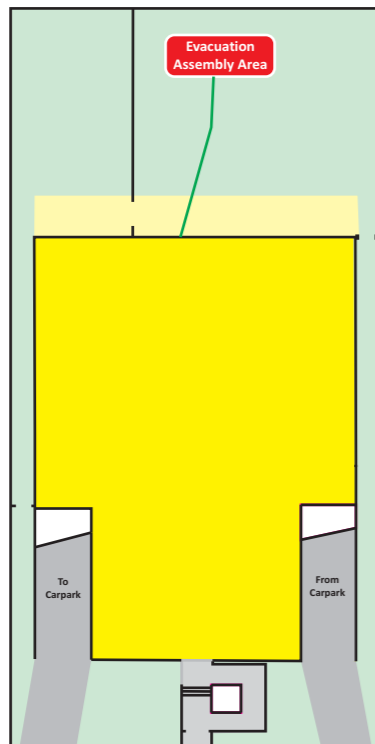


170 Derby Street, PENRITH NSW 2750

EMERGENCY PROCEDURES

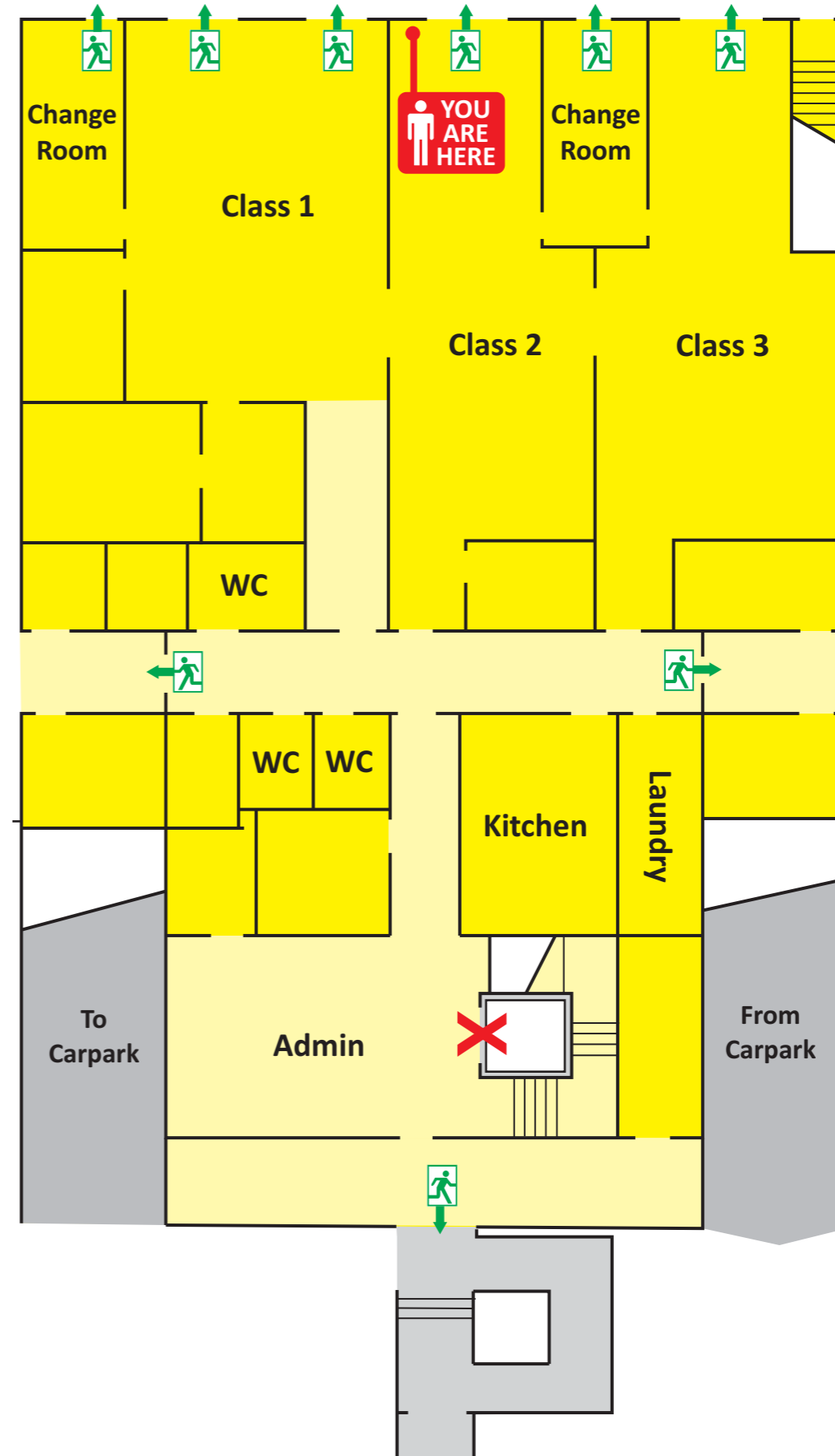
- Remove yourself and others from immediate danger.
- Conduct a headcount, and evacuate children from the room.
- Move to the Evacuation Assembly Area using evacuation ropes and evacuation cots.
- Request for assistance when required.
- Conduct another head count at the Evacuation Assembly Area.
- Remain in control of your group until the 'all clear' is given.

EVACUATION ASSEMBLY AREA LOCATION



LEGEND

- Emergency Exit
- Dry Chemical Extinguisher
- Hose Reel
- Manual Call Point



EVACUATION DIAGRAM

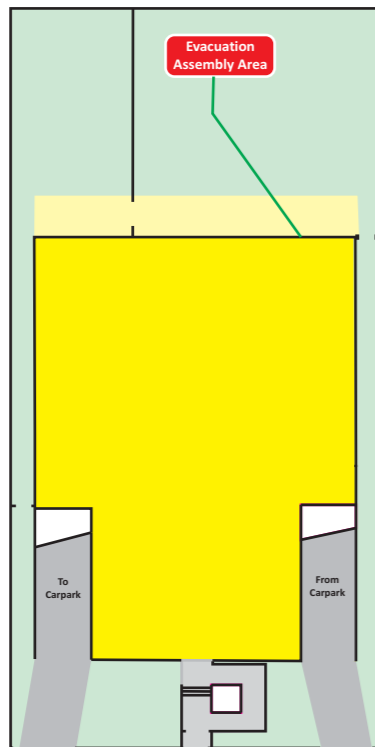


170 Derby Street, PENRITH NSW 2750

EMERGENCY PROCEDURES

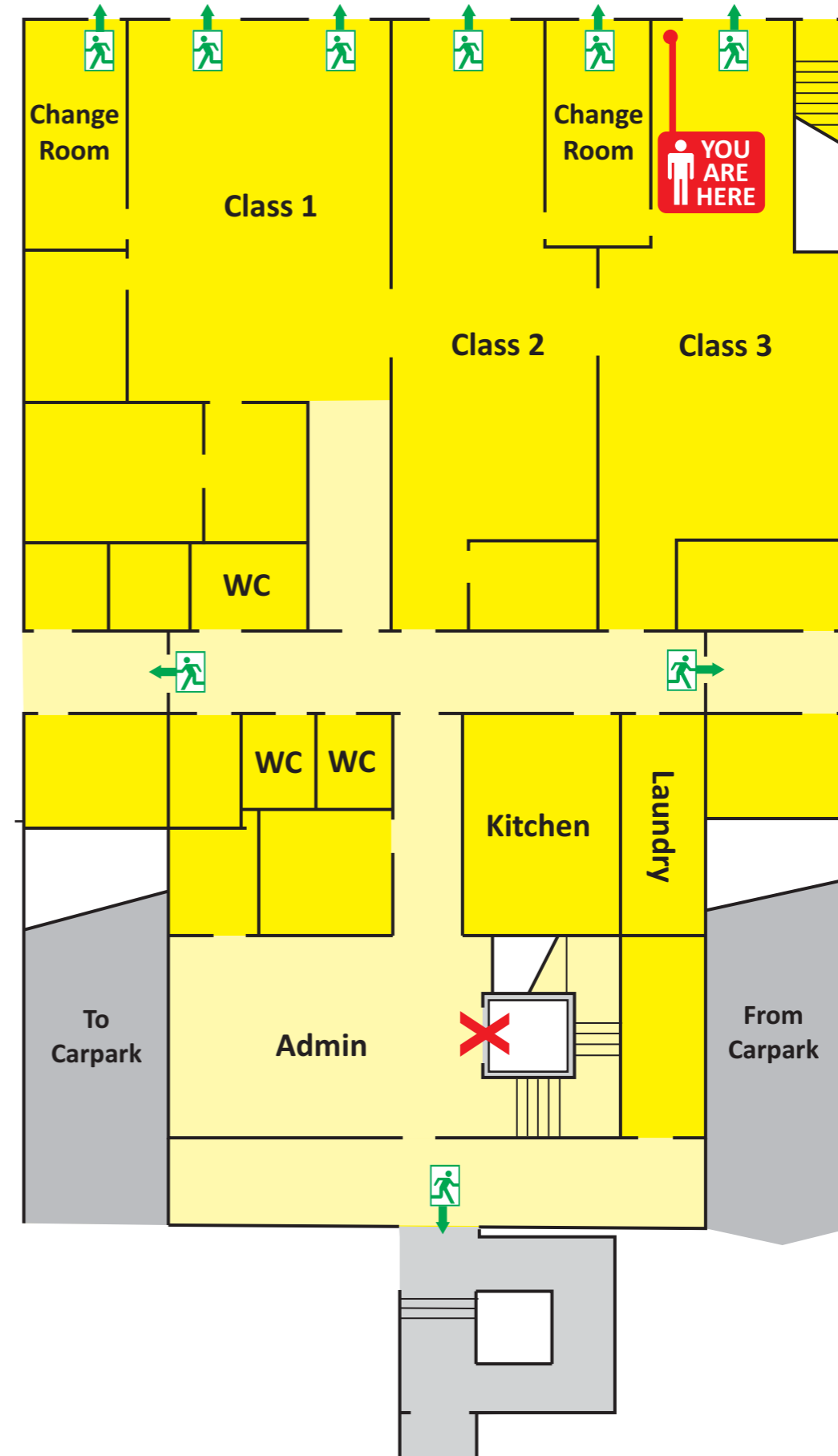
- Remove yourself and others from immediate danger.
- Conduct a headcount, and evacuate children from the room.
- Move to the Evacuation Assembly Area using evacuation ropes and evacuation cots.
- Request for assistance when required.
- Conduct another head count at the Evacuation Assembly Area.
- Remain in control of your group until the 'all clear' is given.

EVACUATION ASSEMBLY AREA LOCATION



LEGEND

- Emergency Exit
- Dry Chemical Extinguisher
- Hose Reel
- Manual Call Point



EVACUATION DIAGRAM

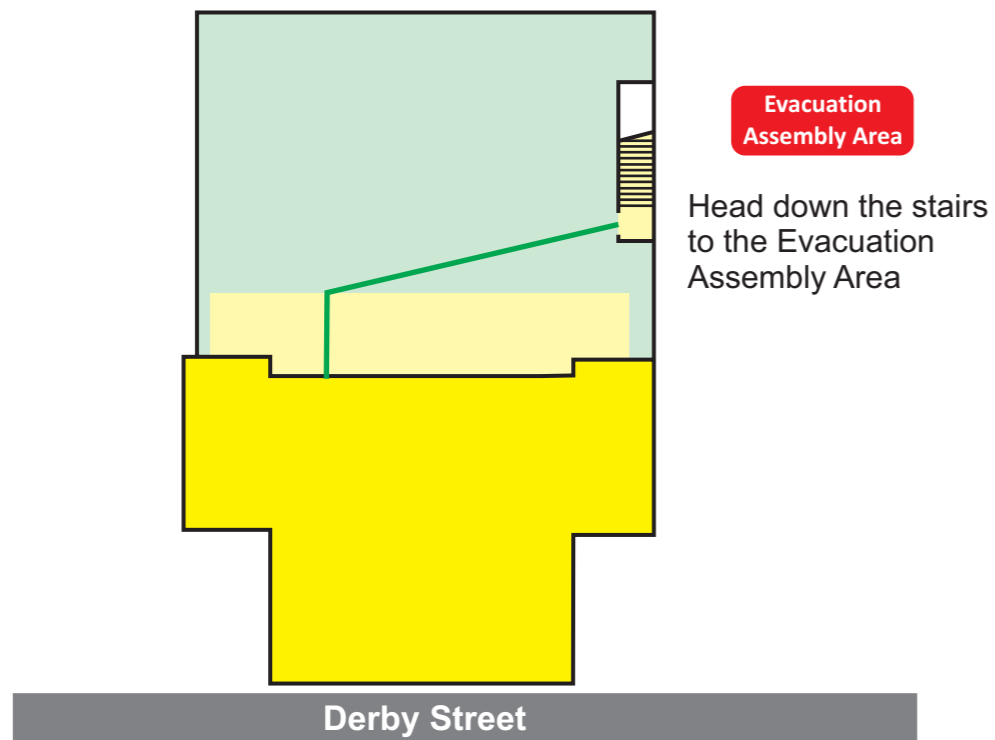


170 Derby Street, PENRITH NSW 2750

EMERGENCY PROCEDURES

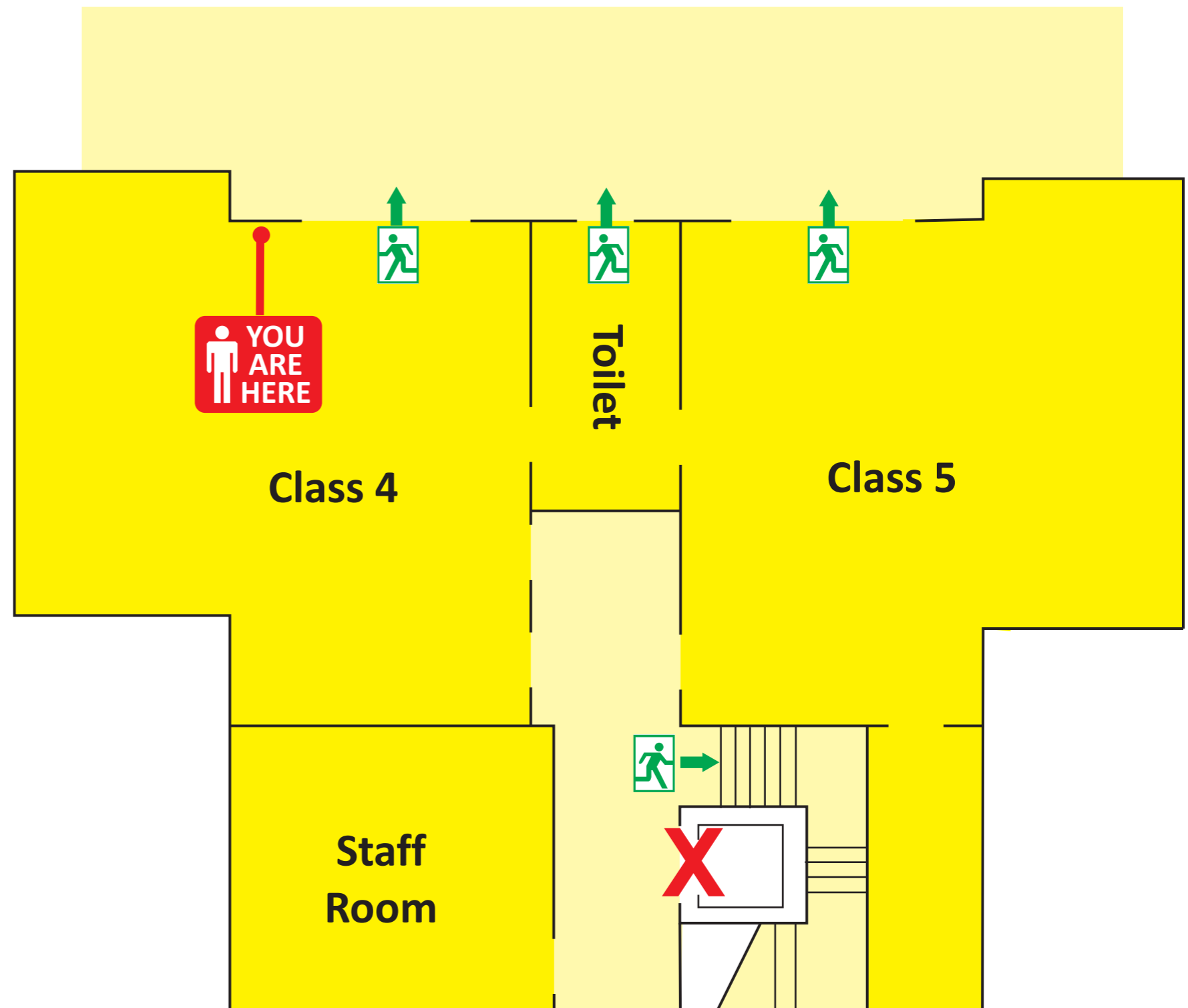
Remove yourself and others from immediate danger.
Conduct a headcount, and evacuate children from the room.
Move to the Evacuation Assembly Area using evacuation ropes and evacuation cots.
Request for assistance when required.
Conduct another head count at the Evacuation Assembly Area.
Remain in control of your group until the 'all clear' is given.

EVACUATION ASSEMBLY AREA LOCATION



LEGEND

- Emergency Exit
- Dry Chemical Extinguisher
- Hose Reel
- Manual Call Point



EVACUATION DIAGRAM

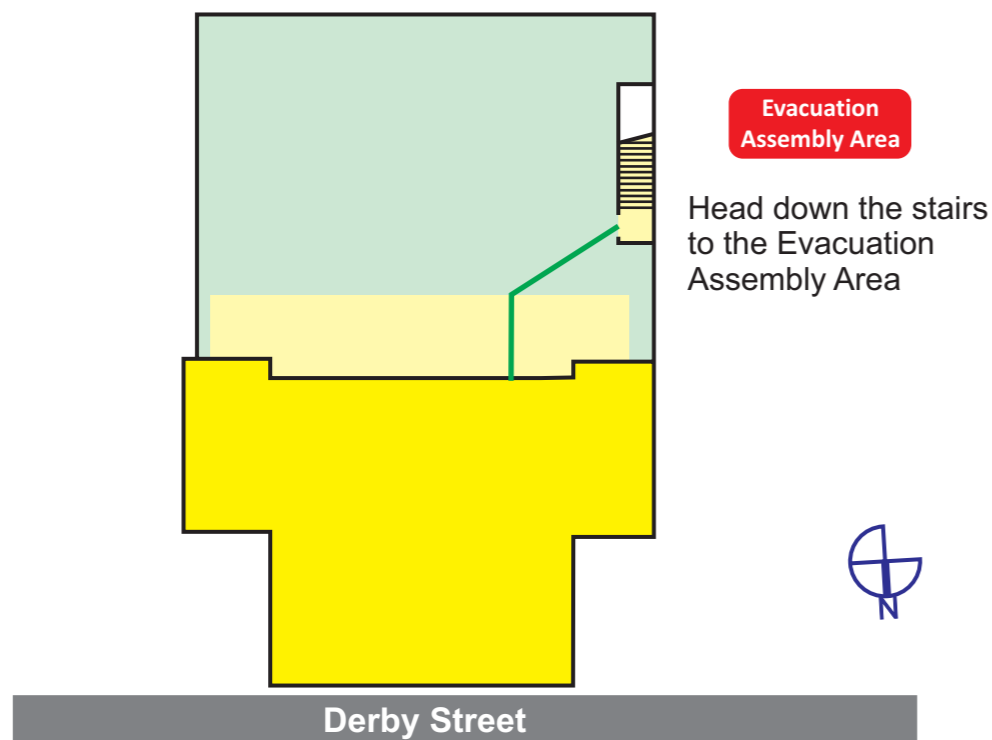


170 Derby Street, PENRITH NSW 2750

EMERGENCY PROCEDURES

Remove yourself and others from immediate danger.
Conduct a headcount, and evacuate children from the room.
Move to the Evacuation Assembly Area using evacuation ropes and evacuation cots.
Request for assistance when required.
Conduct another head count at the Evacuation Assembly Area.
Remain in control of your group until the 'all clear' is given.

EVACUATION ASSEMBLY AREA LOCATION



LEGEND

- | | | | |
|--|---------------------------|--|-------------------|
| | Emergency Exit | | Hose Reel |
| | Dry Chemical Extinguisher | | Manual Call Point |

