

FRESH HOPE CARE
 PENRITH RETIREMENT LIVING
 154-162 STAFFORD STREET, PENRITH NSW
 CIVIL PLAN

SCHEDULE OF DRAWINGS:

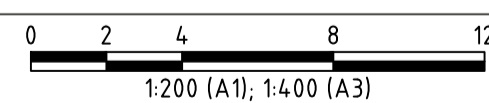
001	LOCATION PLAN AND DRAWING SCHEDULE
101	SEDIMENT & EROSION CONTROL PLAN
110	SEDIMENT & EROSION CONTROL DETAILS
301	SITE WORK PLAN
401	CATCHMENT PLAN
402	STORMWATER LAYOUT
403	DRAINAGE DETAILS



LOCALITY PLAN
 SCALE 1:500

THIS DRAWING IS TO BE VIEWED IN COLOUR AS SOME FEATURES / SYMBOLS ARE DIFFERENTIATED BY COLOUR. DRAWING NOT TO BE RELIED ON IF PRINTED IN GREYSCALE.

PRELIMINARY



SCALE: NOT TO SCALE

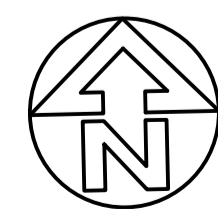
COORDS & DATUM
 MGA94 ZONE 56
 ALL LEVELS TO A.H.D.

SHEET SIZE

A1

<100mm ON ORIGINAL DRAWING - DO NOT SCALE DRAWING>

SURVEYED:
 SURVEY DATE:



PUBLIC UTILITIES:

THE SERVICES SHOWN ARE DERIVED FROM PLANS OBTAINED FROM THE RELEVANT SERVICE AUTHORITIES. IT IS THE RESPONSIBILITY OF THE CONTRACTOR TO ARRANGE WITH THE RELEVANT SERVICE AUTHORITIES FOR CONFIRMATION OF SERVICES AND THEIR LOCATION BEFORE EXCAVATION WORK COMMENCES.



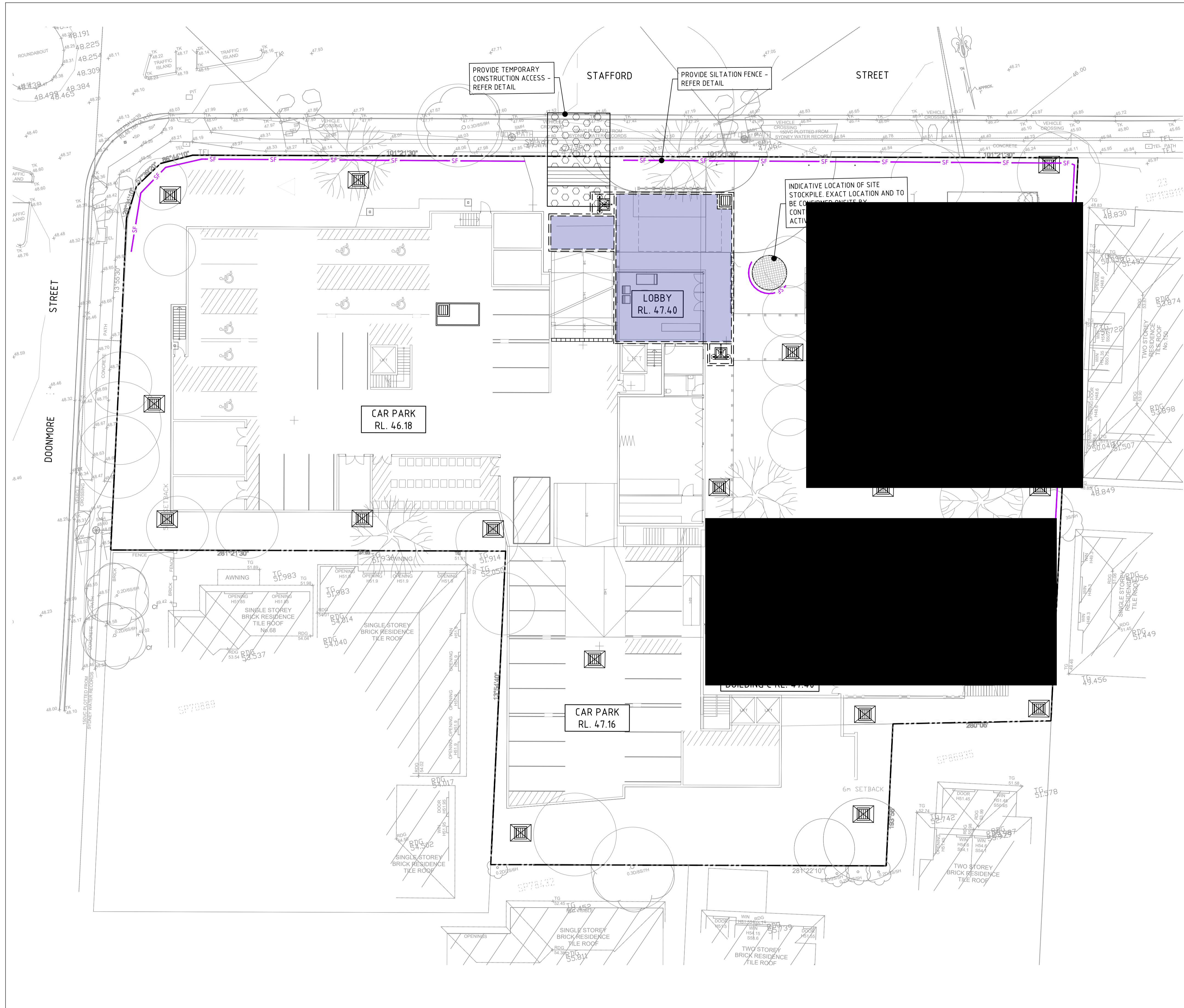
tonkin.com.au

FRESH HOPE CARE

PENRITH RETIREMENT LIVING
 154-162 STAFFORD STREET, PENRITH NSW
 LOCATION PLAN & DRAWING SCHEDULE

FILENAME:	JOB NUMBER	SHEET NUMBER	REVISION
20181340-001 - COV.DWG	20181340	001	B

REV	AMENDMENT / REASON FOR ISSUE	DATE	DES.	DWN.	DWGCHK.	VERIFIED	APPROVED
B	DA ISSUE	28/04/20	MZ	MZ	O.O		B. AMES
A	DA DRAFT	15/04/20	M.Z	M.Z	O.O		B. AMES

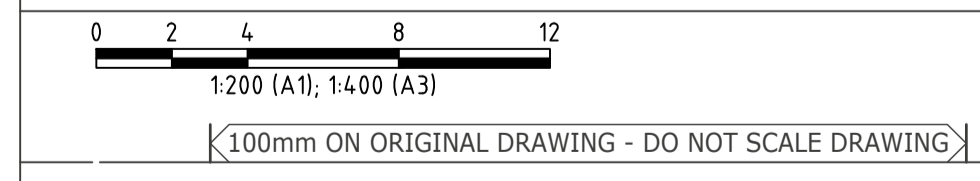


LEGEND

- SITE BOUNDARY
- - - - - TEMPORARY SILT FENCE FOR SEDIMENT CONTROL
- ⊗ GEOTEXTILE SEDIMENT TRAPS AT PROPOSED STORMWATER PIT
- ▣ TEMPORARY CONSTRUCTION ACCESS
- ⊙ INDICATIVE STOCKPILE AREA

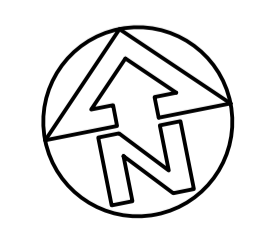
EROSION AND SEDIMENT CONTROL NOTES

1. ALL WORK SHALL BE GENERALLY CARRIED OUT IN ACCORDANCE WITH
 11. LOCAL AUTHORITY REQUIREMENTS,
 12. EPA - POLLUTION CONTROL MANUAL FOR URBAN STORMWATER, AND
 13. LANDCOM NSW - MANAGING URBAN STORMWATER: SOILS AND CONSTRUCTION (THE "BLUE BOOK").
2. EROSION AND SEDIMENT CONTROL DRAWINGS AND NOTES ARE PROVIDED FOR THE WHOLE OF THE EXTENT OF WORKS. STAGING THESE WORKS MAY REQUIRE THE DESIGN TO BE MODIFIED AND VARIATION TO THESE DETAILS MAY REQUIRE APPROVAL BY RELEVANT AUTHORITIES.
3. ALL EROSION AND SEDIMENT CONTROL DEVICES TO BE MAINTAINED TO THE SATISFACTION OF THE SUPERINTENDENT AND THE LOCAL AUTHORITY.
4. ALL VEHICLES SHALL ONLY ENTER AND EXIT THE SITE VIA THE NOMINATED TEMPORARY CONSTRUCTION ACCESS.
5. ALL EXITING VEHICLES SHALL BE CLEANED AND INSPECTED BEFORE EXITING.
6. ATTEMPT TO BE MADE TO MINIMISE THE AREA OF SITE BEING DISTURBED AT ANY ONE TIME.
7. FOLLOWING CONSTRUCTION OF STORMWATER PITS, PREVENT SITE RUNOFF ENTERING THE PITS UNLESS SILT FENCES ARE ERECTED AROUND PITS.
8. ALL STOCKPILES OF MATERIALS TO BE PROTECTED FROM SCOUR AND EROSION. STOCKPILES OF LOOSE MATERIALS SHOULD BE AVOIDED NEAR ANY DRAINAGE PITS, ROADWAYS AND NEAR IN WATERCOURSES.
9. CONTRACTOR TO ENSURE ALL NOMINATED DEVICES TO BE REINSTALLED FOLLOWING CLOSURE OF WORKING DAY, MODIFIED AS REQUIRED TO SUIT THE BEST SITE CONDITIONS AT THE TIME.
10. WATER FROM UPSTREAM OF THE SITE TO BE CONTROLLED SUCH THAT IT DOES NOT ENTER THE DISTURBED SITE.
11. MAINTAIN ALL STORMWATER PIPES AND PITS CLEAR OF DEBRIS AND SEDIMENT.
12. STORMWATER SYSTEM AND ALL DEVICES TO BE INSPECTED AND CLEANED OUT AS REQUIRED AFTER EACH STORM EVENT.
13. WATER QUALITY TESTING MUST BE UNDERTAKEN BY SUITABLY QUALIFIED ENVIRONMENTAL CONSULTANT PRIOR TO ANY DISCHARGE OF SITE STORMWATER, GROUNDWATER AND SEEPAGE WATER.
 - 13.1. ENVIRONMENTAL CONSULTANT TO OUTLINE PROPOSED AND ONGOING MONITORING MEASURES THAT WILL BE MONITORING THE QUALITY OF WATER DISCHARGED FROM THE SITE. FREQUENCY, VALIDATION, AND ALL CONTINGENCIES TO BE OUTLINED BY CONSULTANT.
 - 13.2. ALL REMEDIAL MEASURES AS NOMINATED BY ENVIRONMENTAL CONSULTANT TO BE APPLIED BY CONTRACTOR.
 - 13.3. TESTING AND REPORTING TO BE IN COMPLIANCE WITH ALL RELATIVE AUSTRALIAN STANDARDS AND GUIDELINES.
14. SILT FENCE LOCATION IS INDICATIVE ONLY.



SCALE: 1 : 200 @A1
 SURVEYED: _____
 SURVEY DATE: _____

COORDS & DATUM
 MGA94 ZONE 56
 ALL LEVELS TO A.H.D.
 SHEET SIZE
A1



PUBLIC UTILITIES:
 THE SERVICES SHOWN ARE DERIVED FROM PLANS OBTAINED FROM THE RELEVANT SERVICE AUTHORITIES. IT IS THE RESPONSIBILITY OF THE CONTRACTOR TO ARRANGE WITH THE RELEVANT SERVICE AUTHORITIES FOR CONFIRMATION OF SERVICES AND THEIR LOCATION BEFORE EXCAVATION WORK COMMENCES.

THIS DRAWING IS TO BE VIEWED IN COLOUR AS SOME FEATURES / SYMBOLS ARE DIFFERENTIATED BY COLOUR. DRAWING NOT TO BE RELIED ON IF PRINTED IN GREYSCALE.

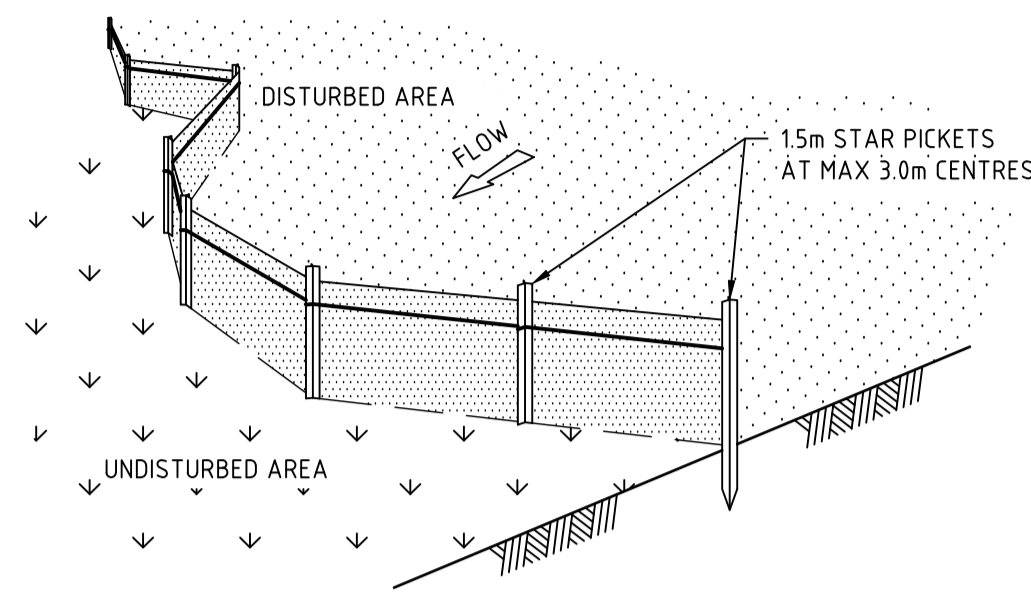
PRELIMINARY



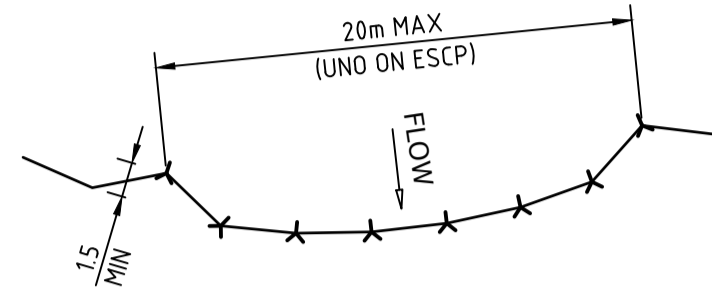
FRESH HOPE CARE
PENRITH RETIREMENT LIVING
 154-162 STAFFORD STREET, PENRITH NSW
EROSION AND SEDIMENT CONTROL PLAN

REV	DATE	DES.	DWN.	DWGCHK.	VERIFIED	APPROVED
B	28/04/20	MZ	MZ	O.O		B. AMES
A	15/04/20	M.Z	M.Z	O.O		B. AMES

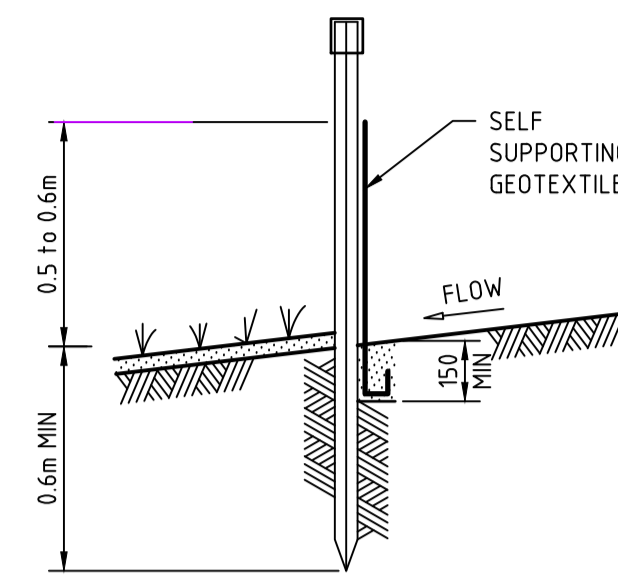
FILENAME:	JOB NUMBER	SHEET NUMBER	REVISION
20181340-101-SEP.DWG	20181340	101	B



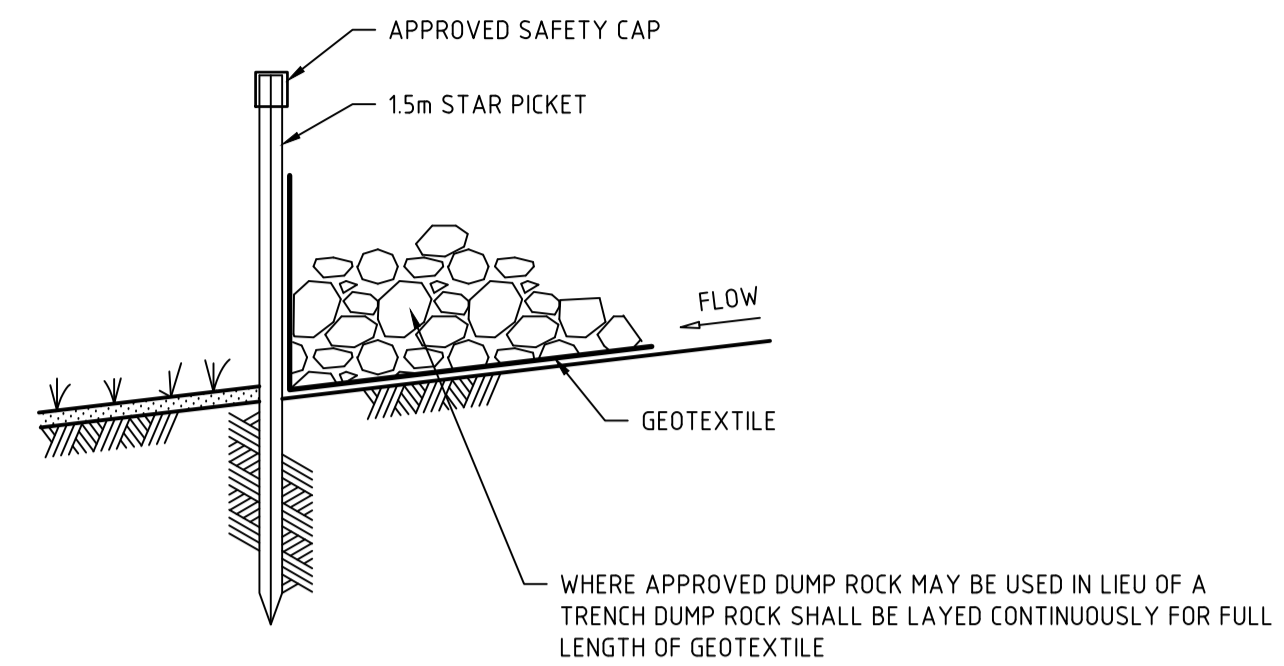
DETAIL - 1



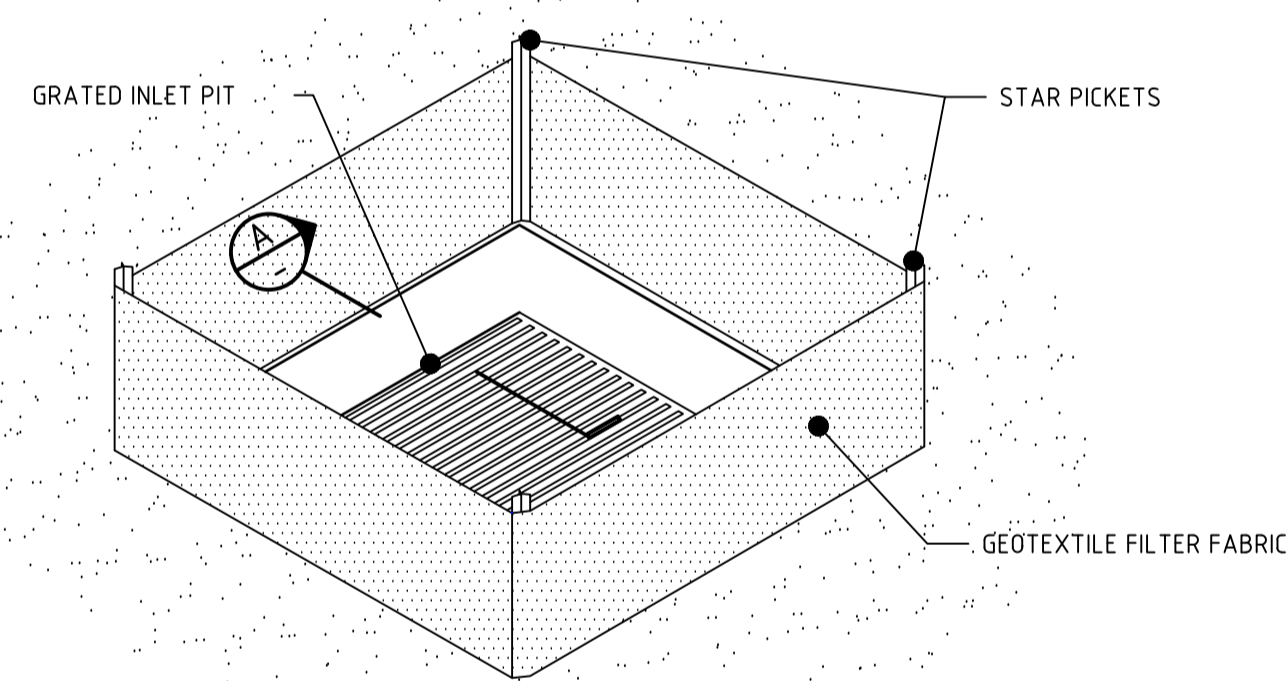
DETAIL - 2



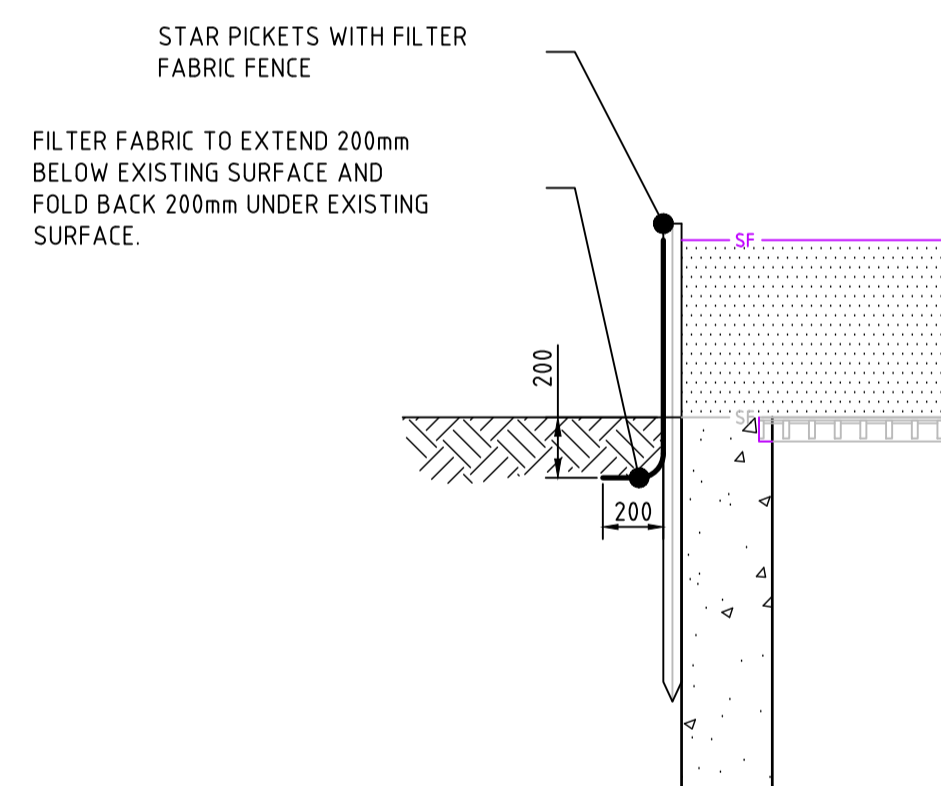
STANDARD FENCE INSTALLATION & ANCHOR DETAIL



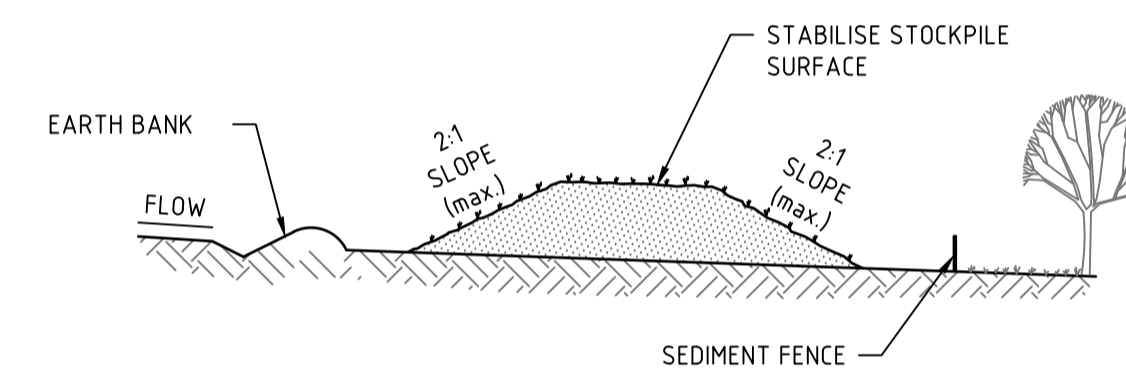
ALTERNATIVE FENCE INSTALLATION AND ANCHOR DETAIL



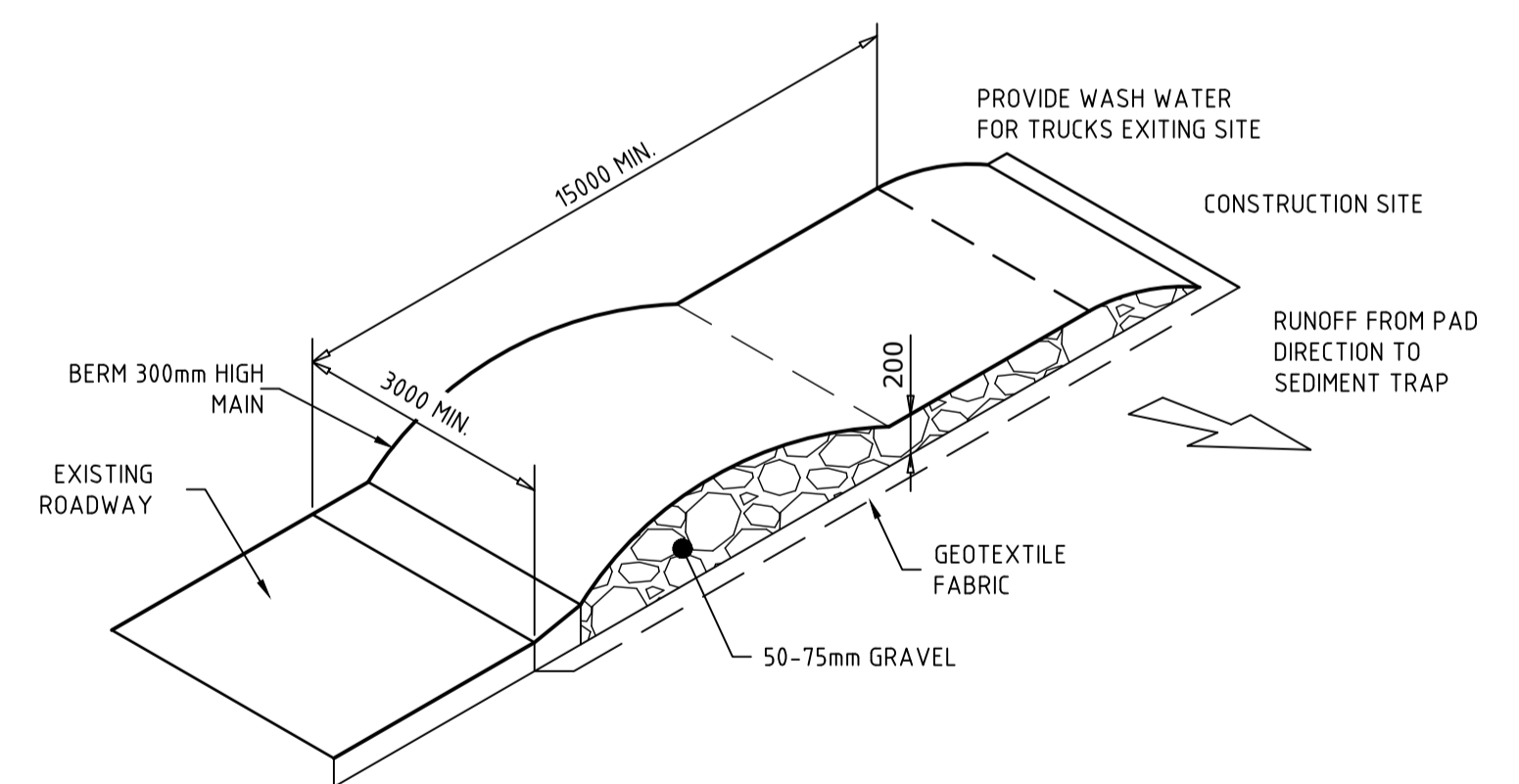
GEOTEXTILE INLET FILTER SEDIMENT TRAP
NTS



SECTION A-A
NTS



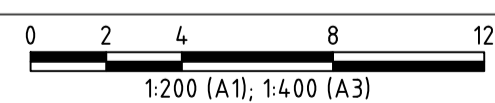
STOCKPILE
NTS



TEMPORARY CONSTRUCTION ACCESS
NTS

THIS DRAWING IS TO BE VIEWED IN COLOUR AS SOME FEATURES / SYMBOLS ARE DIFFERENTIATED BY COLOUR. DRAWING NOT TO BE RELIED ON IF PRINTED IN GREYSKALE.

PRELIMINARY



100mm ON ORIGINAL DRAWING - DO NOT SCALE DRAWING

SCALE: AS SHOWN

SURVEYED:
SURVEY DATE:

COORDS & DATUM
MGA94 ZONE 56
ALL LEVELS TO A.H.D.

SHEET SIZE

A1

REV	AMENDMENT / REASON FOR ISSUE	DATE	DES.	DWN.	DWGCHK.	VERIFIED	APPROVED
B	DA ISSUE	28/04/20	MZ	MZ	O.O		B. AMES
A	DA DRAFT	15/04/20	M.Z	M.Z	O.O		B. AMES

© TONKIN CONSULTING

PUBLIC UTILITIES:

THE SERVICES SHOWN ARE DERIVED FROM PLANS OBTAINED FROM THE RELEVANT SERVICE AUTHORITIES. IT IS THE RESPONSIBILITY OF THE CONTRACTOR TO ARRANGE WITH THE RELEVANT SERVICE AUTHORITIES FOR CONFIRMATION OF SERVICES AND THEIR LOCATION BEFORE EXCAVATION WORK COMMENCES.

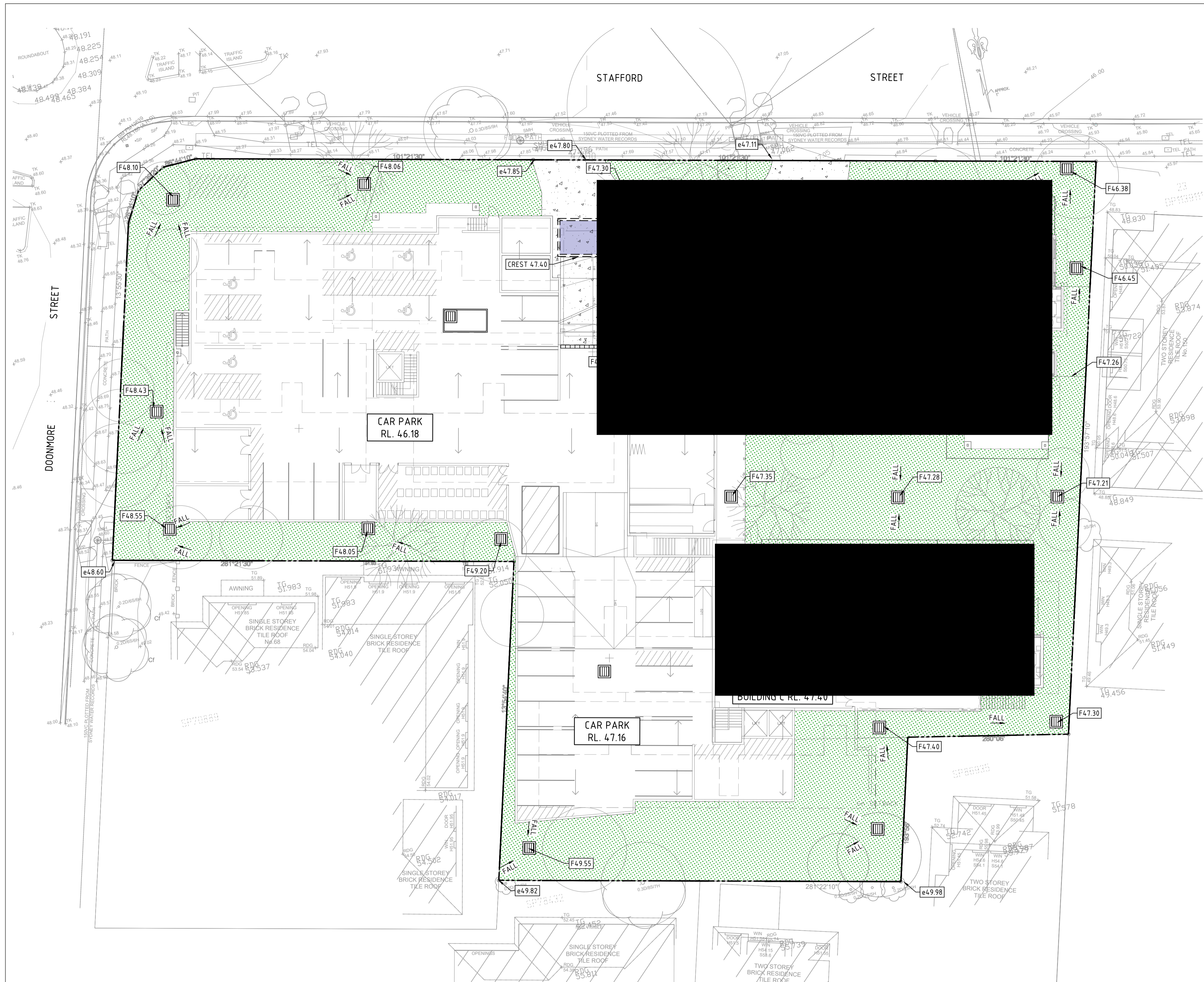





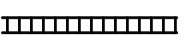
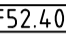
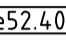

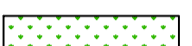
tonkin.com.au

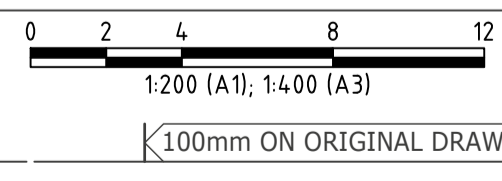
FRESH HOPE CARE

PENRITH RETIREMENT LIVING
154-162 STAFFORD STREET, PENRITH NSW
EROSION AND SEDIMENT CONTROL DETAILS

FILENAME:	JOB NUMBER	SHEET NUMBER	REVISION
20181340-101-SEP.DWG	20181340	110	B

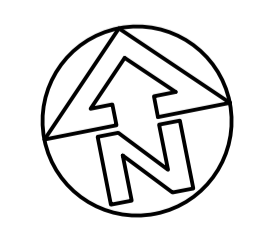


- LEGEND**
-  STORMWATER GRATED INLET PIT
 -  STORMWATER JUNCTION BOX
 -  SITE BOUNDARY
 -  STORMWATER GRATED DRAIN
 -  FINISHED SURFACE LEVEL
 -  EXISTING SURFACE LEVEL
 -  NEW CONCRETE DRIVEWAY
 -  NEW LANDSCAPING AREA (REFER TO LANDSCAPE ARCHITECT'S DETAILS)



SCALE: 1 : 200 @A1
 SURVEYED: MZ MZ O.O
 SURVEY DATE: 15/04/20 M.Z M.Z O.O

COORDS & DATUM
 MGA94 ZONE 56
 ALL LEVELS TO A.H.D.
 SHEET SIZE
A1



PUBLIC UTILITIES:
 THE SERVICES SHOWN ARE DERIVED FROM PLANS OBTAINED FROM THE RELEVANT SERVICE AUTHORITIES. IT IS THE RESPONSIBILITY OF THE CONTRACTOR TO ARRANGE WITH THE RELEVANT SERVICE AUTHORITIES FOR CONFIRMATION OF SERVICES AND THEIR LOCATION BEFORE EXCAVATION WORK COMMENCES.

THIS DRAWING IS TO BE VIEWED IN COLOUR AS SOME FEATURES / SYMBOLS ARE DIFFERENTIATED BY COLOUR. DRAWING NOT TO BE RELIED ON IF PRINTED IN GREYSCALE.

PRELIMINARY



FRESH HOPE CARE
PENRITH RETIREMENT LIVING
 154-162 STAFFORD STREET, PENRITH NSW
SITE WORK PLAN

REV	DA ISSUE	DATE	DES.	DWN.	DWGCHK.	VERIFIED	APPROVED
B	DA ISSUE	28/04/20	MZ	MZ	O.O		B. AMES
A	DA DRAFT	15/04/20	M.Z	M.Z	O.O		B. AMES
	AMENDMENT / REASON FOR ISSUE						

FILENAME:	JOB NUMBER	SHEET NUMBER	REVISION
20181340-301-STW.DWG	20181340	301	B

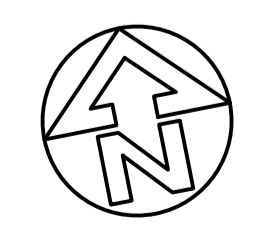


- LEGEND**
- STORMWATER GRATED INLET PIT
 - STORMWATER JUNCTION BOX
 - STORMWATER PIPE
 - SITE BOUNDARY
 - STORMWATER GRATED DRAIN
 - 150.5 kL UNDERGROUND OSD TANK
 - IMPERVIOUS AREA TO OSD
AREA = 2172m²
 - ROOF AREA TO RAINWATER TANK
AREA = 1115m²
 - PERVIOUS AREA TO OSD
AREA = 1343m²
 - IMPERVIOUS AREA BYPASS OSD
AREA = 23m²
 - PERVIOUS AREA BYPASS OSD
AREA = 227m²

0 2 4 8 12
1:200 (A1); 1:400 (A3)
100mm ON ORIGINAL DRAWING - DO NOT SCALE DRAWING

SCALE: 1 : 200 @A1
SURVEYED: MZ MZ O.O
SURVEY DATE: 15/04/20 M.Z O.O

COORDS & DATUM
MGA94 ZONE 56
ALL LEVELS TO A.H.D.
SHEET SIZE
A1



PUBLIC UTILITIES:
THE SERVICES SHOWN ARE DERIVED FROM PLANS OBTAINED FROM THE RELEVANT SERVICE AUTHORITIES. IT IS THE RESPONSIBILITY OF THE CONTRACTOR TO ARRANGE WITH THE RELEVANT SERVICE AUTHORITIES FOR CONFIRMATION OF SERVICES AND THEIR LOCATION BEFORE EXCAVATION WORK COMMENCES.

THIS DRAWING IS TO BE VIEWED IN COLOUR AS SOME FEATURES / SYMBOLS ARE DIFFERENTIATED BY COLOUR. DRAWING NOT TO BE RELIED ON IF PRINTED IN GREYSCALE.

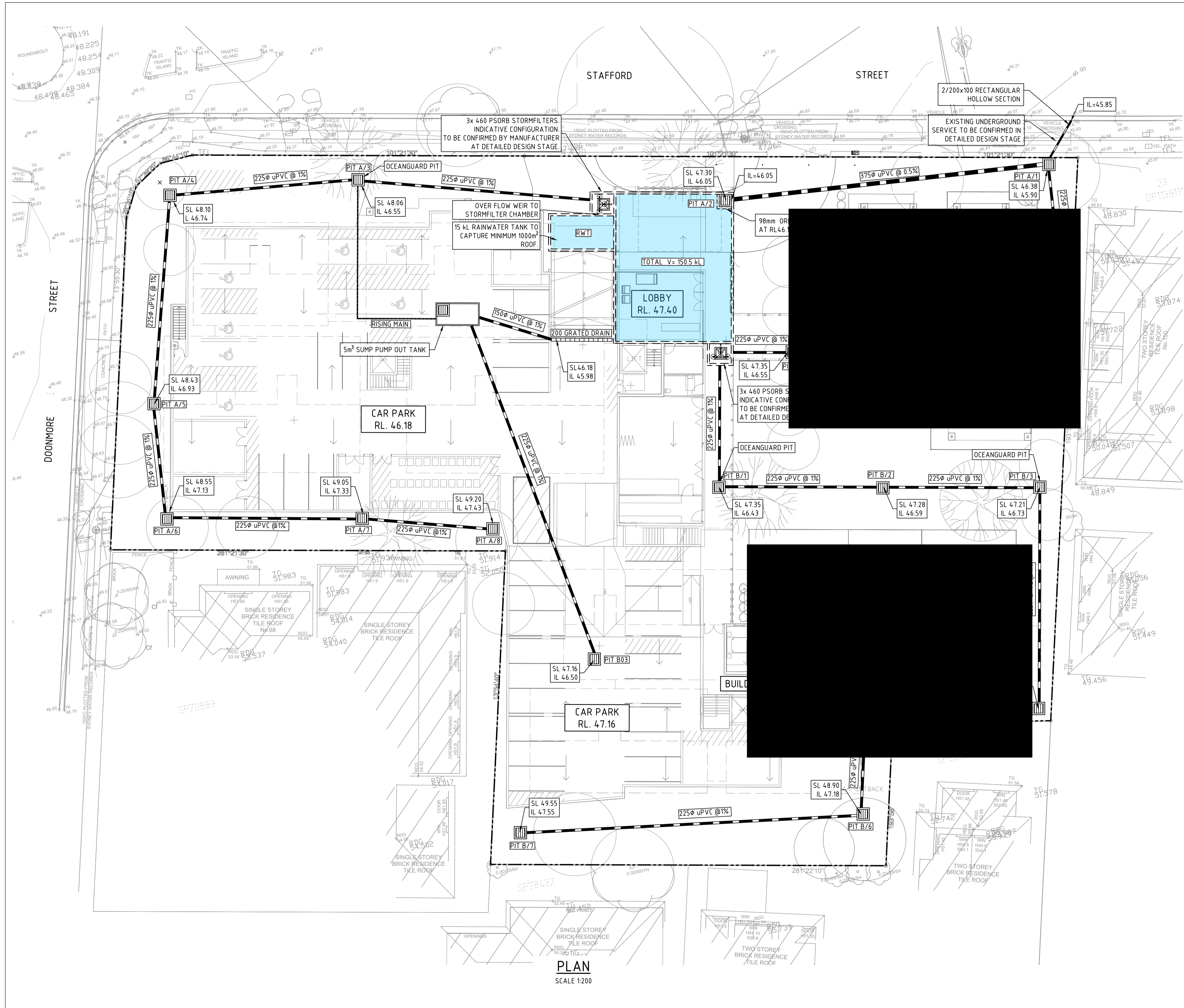
PRELIMINARY



FRESH HOPE CARE
PENRITH RETIREMENT LIVING
154-162 STAFFORD STREET, PENRITH NSW
CATCHMENT PLAN

REV	DA	ISSUE	DATE	DES.	DWN.	DWGCHK.	VERIFIED	APPROVED
B	DA	ISSUE	28/04/20	MZ	MZ	O.O		B. AMES
A	DA	DRAFT	15/04/20	M.Z	M.Z	O.O		B. AMES
REV	AMENDMENT / REASON FOR ISSUE	DATE	DES.	DWN.	DWGCHK.	VERIFIED	APPROVED	

FILENAME:	JOB NUMBER	SHEET NUMBER	REVISION
20181340-401-CAT.DWG	20181340	401	B

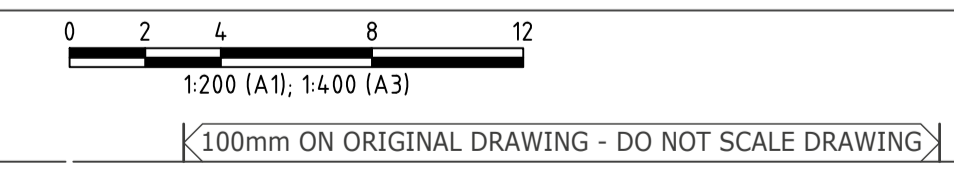


- LEGEND**
- STORMWATER GRATED INLET PIT
 - STORMWATER JUNCTION BOX
 - STORMWATER PIPE
 - SITE BOUNDARY
 - STORMWATER GRATED DRAIN
 - 150.5 kL UNDERGROUND OSD TANK

- NOTES:**
- STORMWATER DRAINAGE LAYOUT TO BE REFINED DURING DETAILED DESIGN TO MATCH WITH FINAL LANDSCAPE DESIGN
 - REFER TO DWG 403 FOR OSD AND DRAINAGE DETAILS
 - THE FOLLOWING WATER QUALITY IMPROVEMENT MEASURES ARE REQUIRED TO MEET PENRITH CITY COUNCIL WATER QUALITY TARGETS:
 - 6 x OCEANPROTECT STORMFILTERS CARTRIDGES OR APPROVED EQUIVALENT
 - 3 x OCEANPROTECT OCEANGUARDS OR APPROVED EQUIVALENT ON GRATED INLET PITS AS SHOWN ON DRAWING,
 - GRASS BUFFER WHERE POSSIBLE
 - REFER STORMWATER DESIGN REPORT FOR MORE DETAIL.
 - DOWNPIPE CONNECTIONS AND RAINWATER TANK TO BE DESIGNED BY OTHERS.
 - BASEMENT PUMP TO BE DESIGNED BY OTHERS TO MEET PENRITH COUNCIL'S REQUIREMENT.

PLAN
SCALE 1:200

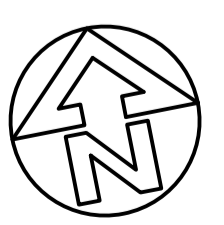
THIS DRAWING IS TO BE VIEWED IN COLOUR AS SOME FEATURES / SYMBOLS ARE DIFFERENTIATED BY COLOUR. DRAWING NOT TO BE RELIED ON IF PRINTED IN GREYSCALE.



SCALE: AS SHOWN
SURVEYED: _____
SURVEY DATE: _____

COORDS & DATUM
MGA94 ZONE 56
ALL LEVELS TO A.H.D.

SHEET SIZE
A1



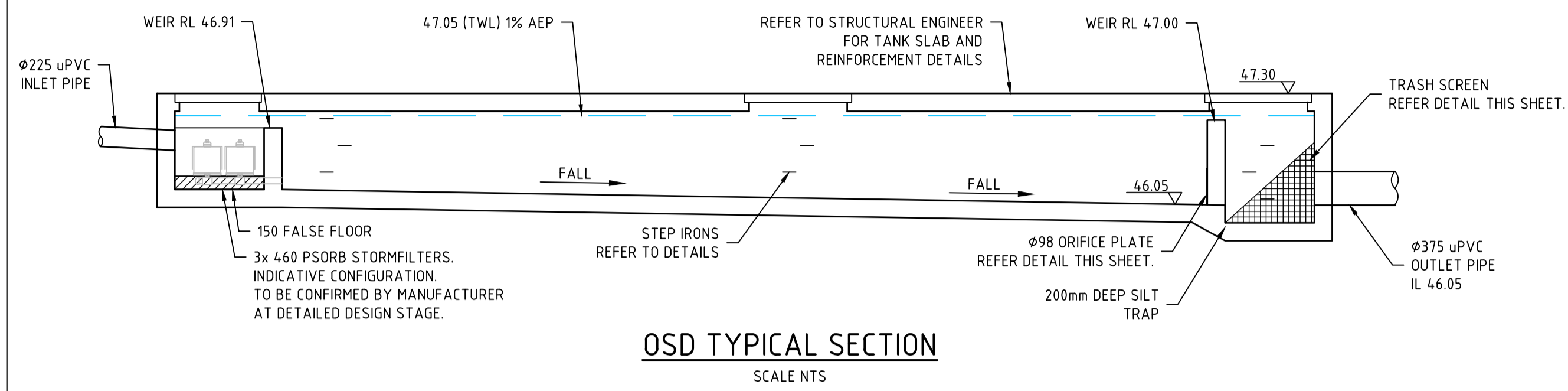
PUBLIC UTILITIES:
THE SERVICES SHOWN ARE DERIVED FROM PLANS OBTAINED FROM THE RELEVANT SERVICE AUTHORITIES. IT IS THE RESPONSIBILITY OF THE CONTRACTOR TO ARRANGE WITH THE RELEVANT SERVICE AUTHORITIES FOR CONFIRMATION OF SERVICES AND THEIR LOCATION BEFORE EXCAVATION WORK COMMENCES.



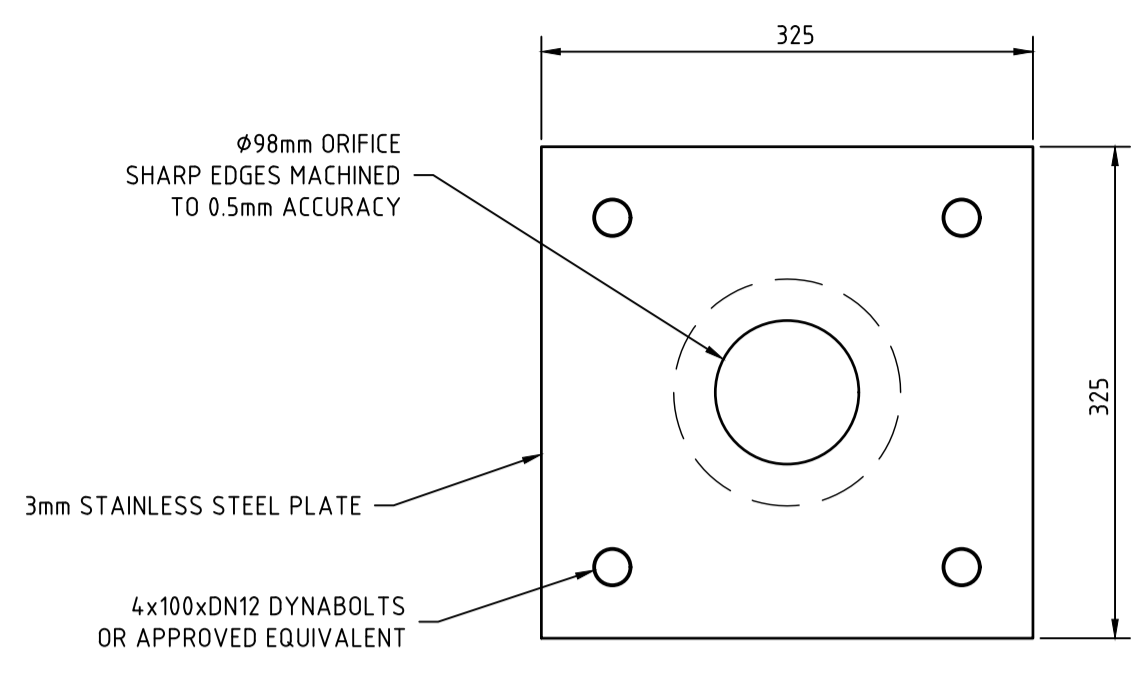
FRESH HOPE CARE
PENRITH RETIREMENT LIVING
154-162 STAFFORD STREET, PENRITH NSW
STORMWATER LAYOUT

REV	DA	ISSUE	DATE	DES.	DWN.	DWGCHK.	VERIFIED	APPROVED
B	DA	ISSUE	28/04/20	MZ	MZ	O.O		B. AMES
A	DA	DRAFT	15/04/20	M.Z	M.Z	O.O		B. AMES
REV	AMENDMENT / REASON FOR ISSUE		DATE	DES.	DWN.	DWGCHK.	VERIFIED	APPROVED

FILENAME:	JOB NUMBER	SHEET NUMBER	REVISION
20181340-402-SWP.DWG	20181340	402	B

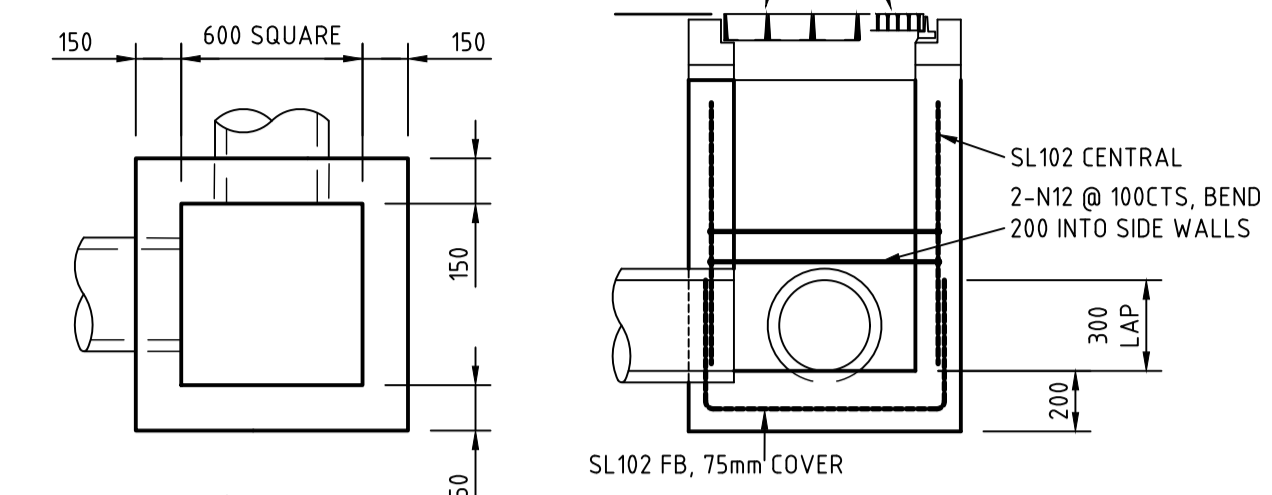


OSD TYPICAL SECTION
SCALE NTS

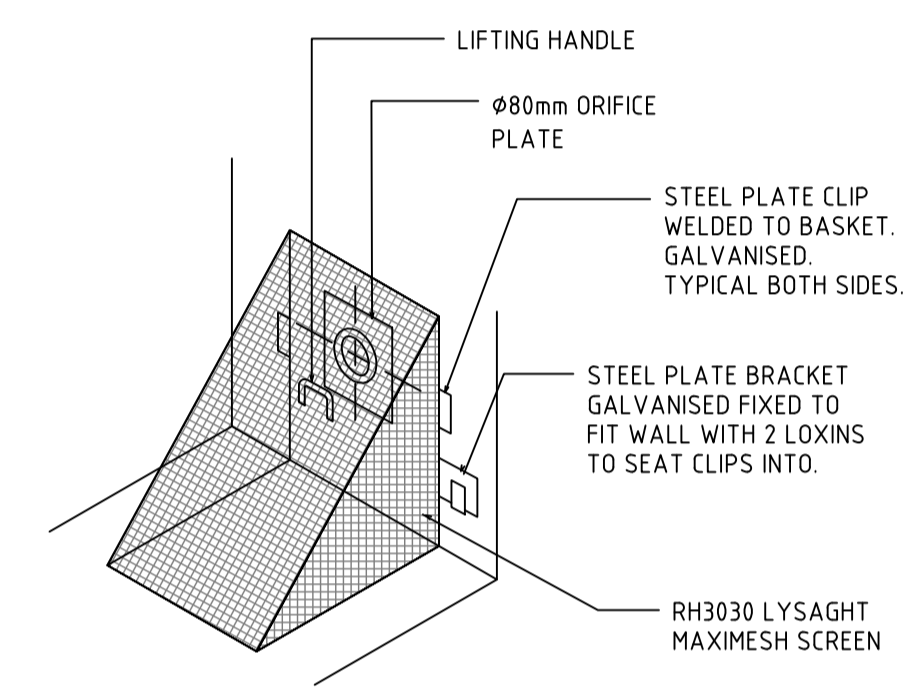


ORIFICE PLATE DETAIL
SCALE 1:5

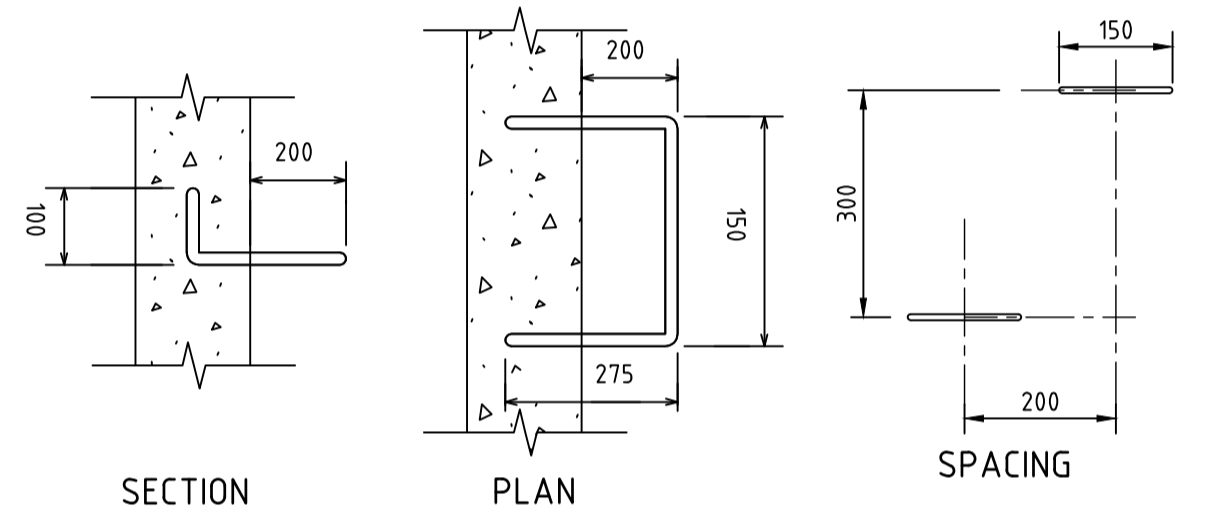
- NOTE:**
1. MINIMUM FABRIC LAP 300mm.
 2. CONCRETE TO BE IN ACCORDANCE WITH AS 3600. CONCRETE TO BE GRADE 32 MPa, SLUMP 80mm.
 3. MAXIMUM DEPTH 1500mm FOR 600 SQU.
 4. MINIMUM COVER TO STEEL REINFORCEMENT SHALL BE 40MM



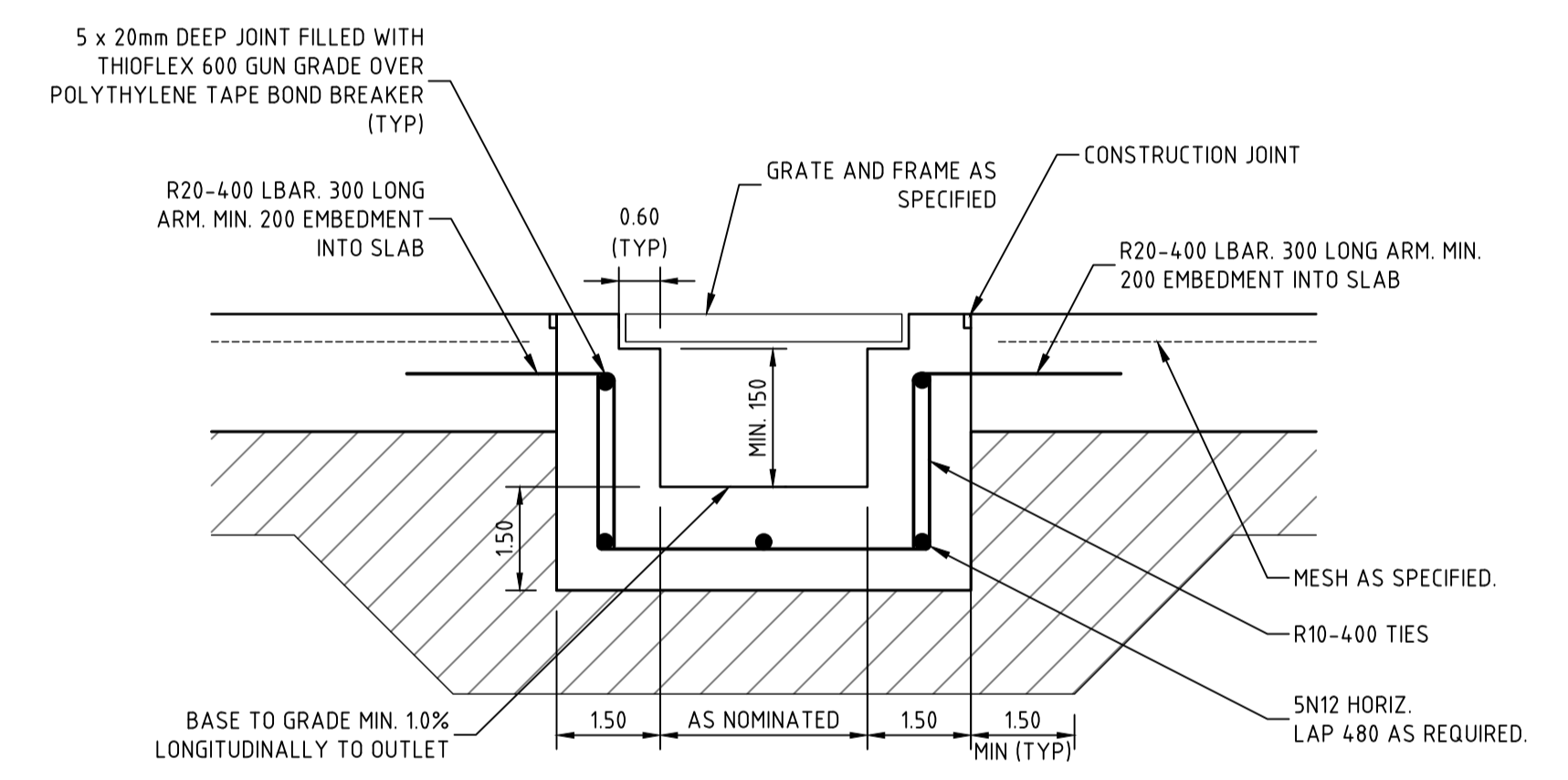
600 SQUARE JUNCTION BOX / GRATING SUMP
SCALE 1:25
SCALE 1:25



TRASH SCREEN
NOT TO SCALE

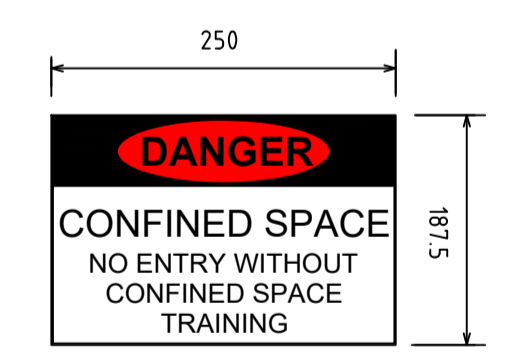


STEP IRONS
NOT TO SCALE

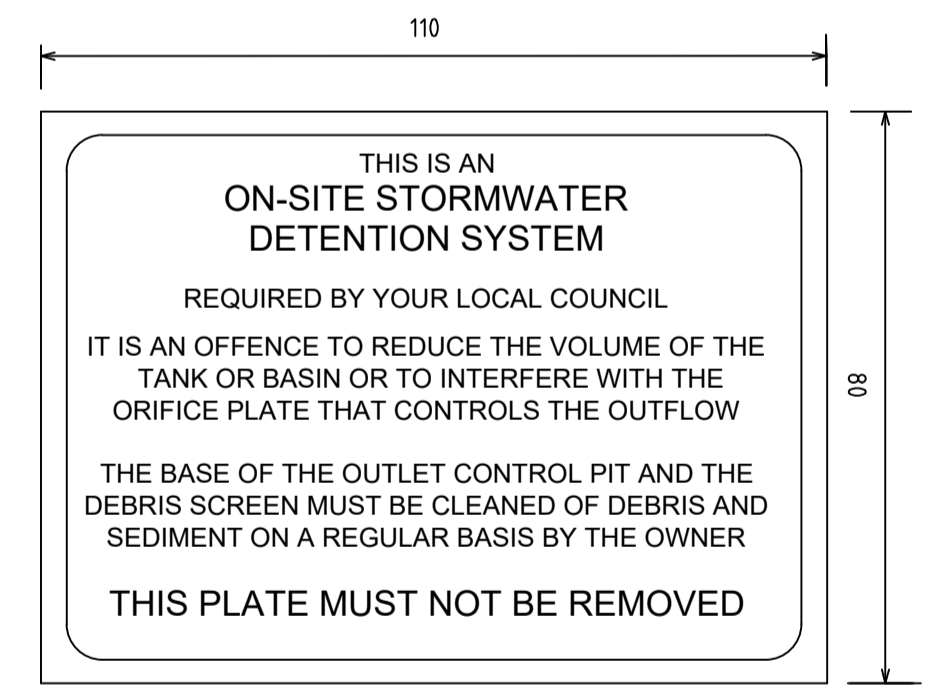


GRADED DRAIN DETAIL
SCALE 1:10

NOTE: PROVIDE EXPANSION/DOWELLED EXPANSION JOINTS AS NOMINATED ON DRAWINGS



CONFINED SPACE SIGN
NOT TO SCALE



OSD SIGN
NOT TO SCALE

THIS DRAWING IS TO BE VIEWED IN COLOUR AS SOME FEATURES / SYMBOLS ARE DIFFERENTIATED BY COLOUR. DRAWING NOT TO BE RELIED ON IF PRINTED IN GREYSKALE.

PRELIMINARY

0 0.05 0.1 0.2 0.3		0 0.5 1 2 3		SCALE: AS SHOWN	COORDS & DATUM MGA94 ZONE 56 ALL LEVELS TO A.H.D.	SHEET SIZE A1
1:5 (A1); 1:10 (A3)		1:50 (A1); 1:100 (A3)		SURVEYED:		
100mm ON ORIGINAL DRAWING - DO NOT SCALE DRAWING				SURVEY DATE:		
B	DA ISSUE	28/04/20	MZ	MZ	O.O	B. AMES
A	DA DRAFT	15/04/20	M.Z	M.Z	O.O	B. AMES
REV	AMENDMENT / REASON FOR ISSUE	DATE	DES.	DWN.	DWGCHK.	VERIFIED APPROVED

PUBLIC UTILITIES:
THE SERVICES SHOWN ARE DERIVED FROM PLANS OBTAINED FROM THE RELEVANT SERVICE AUTHORITIES. IT IS THE RESPONSIBILITY OF THE CONTRACTOR TO ARRANGE WITH THE RELEVANT SERVICE AUTHORITIES FOR CONFIRMATION OF SERVICES AND THEIR LOCATION BEFORE EXCAVATION WORK COMMENCES.



FRESH HOPE CARE
PENRITH RETIREMENT LIVING
154-162 STAFFORD STREET, PENRITH NSW
DRAINAGE DETAILS

FILENAME:	JOB NUMBER	SHEET NUMBER	REVISION
20181340-403-DET.DWG	20181340	403	B