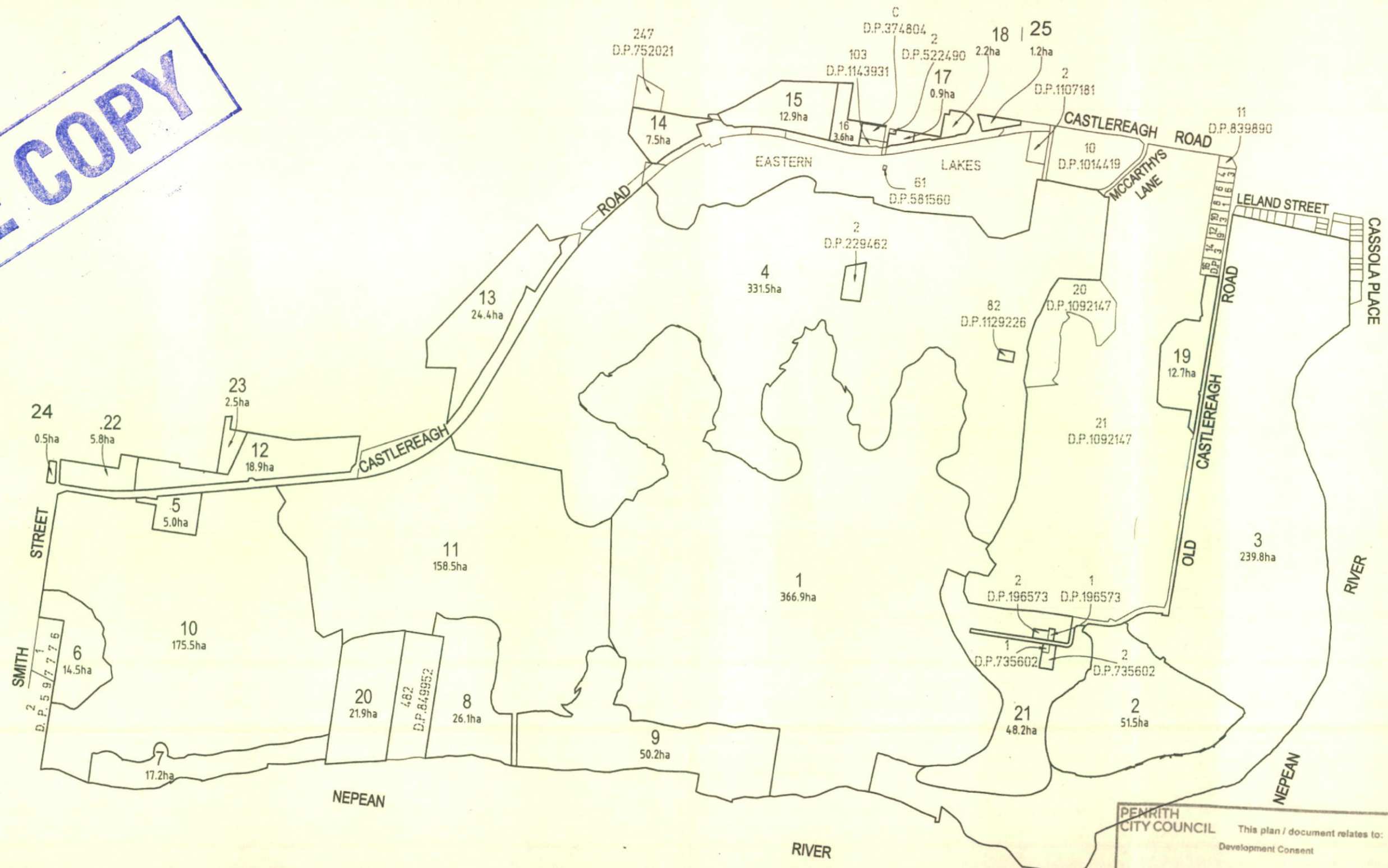


FILE COPY



PENRITH CITY COUNCIL This plan / document relates to:
 Development Consent
140151.01
 Subject to the conditions outlined in the consent
COUNCIL DOES NOT AFFRST TO THE ACCURACY OF DETAILS IN PLANS

PLAN NOT FOR LPI NSW INVESTIGATION

PRELIMINARY PLAN ONLY LOT DIMENSIONS AND AREAS SUBJECT TO SURVEY & REGISTRATION OF THE FINAL PLAN AT LPI NSW

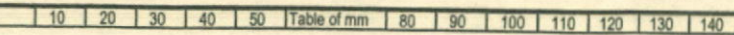
Surveyor: BENJAMIN MEYER
 Date of Survey:
 Surveyor's Ref: 068-13

PLAN OF SUBDIVISION OF VARIOUS LOTS

LGA: PENRITH
 Locality: CRANEBROOK
 Subdivision No.
Lengths are in metres. Reduction Ratio: 1: 15000

Registered

D.P. DRAFT



CAD REF: 2008-103CR_PJ_ANG008-130_S04 [03]

SUBJECT LOT	AFFECTED	CURRENT LOT AND D.P.	CURRENT C.T.
1	PART	1/60859	1/60859
1	PART	1/63308	1/63308
1	WHOLE	1/73955	1/73955
1	WHOLE	1/120872	1/120872
1	WHOLE	1/120891	1/120891
1	WHOLE	470/558416	470/558416
1	PART	43/752021	43/752021
1	PART	300/752021	300/752021
1	PART	421/1130185	421/1130185
1	WHOLE	44/1130206	44/1130206
1	PART	460/1130241	460/1130241
1	PART	461/1130241	461/1130241
1	PART	5/1181666	5/1181666
1	WHOLE	6/1181666	6/1181666
1	PART	7/1181666	7/1181666
1	PART	11/1188657	11/1188657
1	PART	12/1188657	12/1188657
1	PART	1/1212402	1/1212402
2	PART	43/752021	43/752021
2	PART	7/1181666	7/1181666
2	WHOLE	8/1181666	8/1181666
2	PART	1/1212402	1/1212402
3	PART	1/63308	1/63308
3	PART	421/1130185	421/1130185
3	PART	11/1188657	11/1188657
3	PART	12/1188657	12/1188657
4	PART	1/219895	1/219895
4	PART	481/849952	481/849952
5	WHOLE	1/2223	1/2223
5	WHOLE	4/2223	4/2223
5	WHOLE	1/45727	1/45727
5	WHOLE	1/47720	1/47720
5	PART	1/60859	1/60859
5	WHOLE	56/78686	56/78686
5	PART	1/87060	1/87060
5	PART	2/87060	2/87060
5	WHOLE	1/126036	1/126036

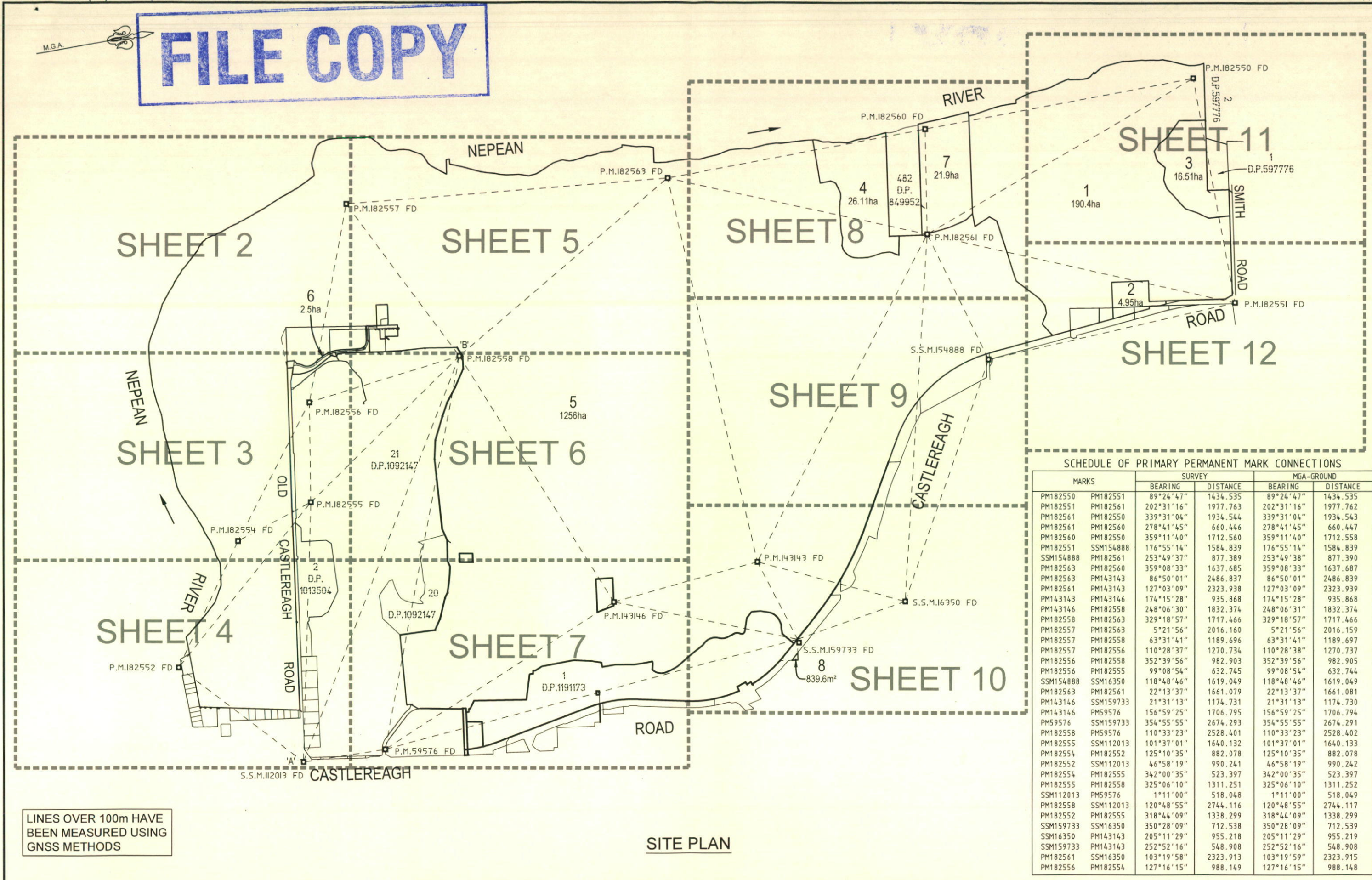
5	WHOLE	2981/128099	2981/128099
5	WHOLE	1/129802	1/129802
5	WHOLE	1/200839	1/200839
5	WHOLE	2/200839	2/200839
5	PART	1/219895	1/219895
5	WHOLE	3/219895	3/219895
5	WHOLE	1/229462	1/229462
5	WHOLE	1/236125	1/236125
5	WHOLE	2/236125	2/236125
5	WHOLE	2/348979	2/348979
5	WHOLE	A/374807	A/374807
5	WHOLE	B/374807	B/374807
5	WHOLE	B/394967	B/394967
5	WHOLE	X/421674	X/421674
5	WHOLE	Y/421674	Y/421674
5	WHOLE	1/436198	1/436198
5	WHOLE	21/503256	21/503256
5	WHOLE	23/530256	23/530256
5	WHOLE	44/545813	44/545813
5	WHOLE	45/545813	45/545813
5	WHOLE	42/546220	42/546220
5	WHOLE	57/668807	57/668807
5	PART	300/752021	300/752021
5	WHOLE	302/752021	302/752021
5	WHOLE	303/752021	303/752021
5	WHOLE	304/752021	304/752021
5	WHOLE	305/752021	305/752021
5	WHOLE	306/752021	306/752021
5	WHOLE	307/752021	307/752021
5	WHOLE	308/752021	308/752021
5	WHOLE	309/752021	309/752021
5	WHOLE	310/752021	310/752021
5	WHOLE	321/752021	321/752021
5	WHOLE	325/752021	325/752021
5	WHOLE	337/752021	337/752021
5	WHOLE	338/752021	338/752021
5	PART	481/849952	481/849952
5	WHOLE	16/1013504	16/1013504

5	WHOLE	17/1013504	17/1013504
5	WHOLE	18/1013504	18/1013504
5	WHOLE	101/1043500	101/1043500
5	WHOLE	64/1111742	64/1111742
5	PART	460/1130241	460/1130241
5	PART	461/1130241	461/1130241
5	WHOLE	540/1131982	540/1131982
5	WHOLE	541/1131982	541/1131982
5	WHOLE	108/1143931	108/1143931
5	WHOLE	111/1143931	111/1143931
5	WHOLE	1/1148035	1/1148035
5	WHOLE	2/1148035	2/1148035
5	WHOLE	3/1148035	3/1148035
5	WHOLE	4/1148035	4/1148035
5	WHOLE	5/1148035	5/1148035
5	WHOLE	6/1148035	6/1148035
5	WHOLE	7/1148035	7/1148035
5	WHOLE	2/1180473	2/1180473
5	WHOLE	3/1180473	3/1180473
5	WHOLE	4/1181666	4/1181666
5	PART	5/1181666	5/1181666
5	WHOLE	2/1191173	2/1191173
5	WHOLE	3/1191173	3/1191173
5	WHOLE	4/1191173	4/1191173
5	WHOLE	5/1191173	5/1191173
5	WHOLE	6/1191173	6/1191173
5	PART	1/1212402	1/1212402
5	PART	2/1212402	2/1212402
5	WHOLE	4/1212402	4/1212402
5	WHOLE	5/1212402	5/1212402
5	WHOLE	6/1212402	6/1212402
5	WHOLE	9/1212402	9/1212402
6	PART	1/1212402	1/1212402
6	PART	2/1212402	2/1212402
6	WHOLE	3/1212402	3/1212402
7	PART	1/87060	1/87060
7	PART	2/87060	2/87060
8	PART	4/1191173	4/1191173

FILE COPY

Surveyor: BENJAMIN MEYER Date of Survey: 8 DECEMBER 2015 Surveyor's Ref: 068-13-OVERALL	PLAN OF SUBDIVISION OF VARIOUS LOTS (AS SPECIFIED IN TABLE ON SHEET 16)	LGA: PENRITH Locality: CASTLEREAGH Subdivision No. <small>Lengths are in metres. Reduction Ratio 1: 4000</small>	Registered	D.P.
---	---	---	------------	------

FILE COPY



LINES OVER 100m HAVE BEEN MEASURED USING GNSS METHODS

NOTE: SEE SHEET 15 FOR SCHEDULE OF CURVED & SHORT BOUNDARIES & M.G.A. COORDINATES
SEE SHEET 16 FOR SCHEDULE OF LOTS AFFECTED BY THIS SUBDIVISION
LOTS 1-6 INCLUSIVE HAVE BEEN HEAVILY QUARRIED AND ALL SURVEY MARKS OTHER THAN THOSE SHOWN ARE GONE

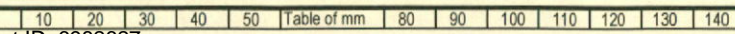
Surveyor: BENJAMIN MEYER
Date of Survey: 8 DECEMBER 2015
Surveyor's Ref: 068-13-OVERALL

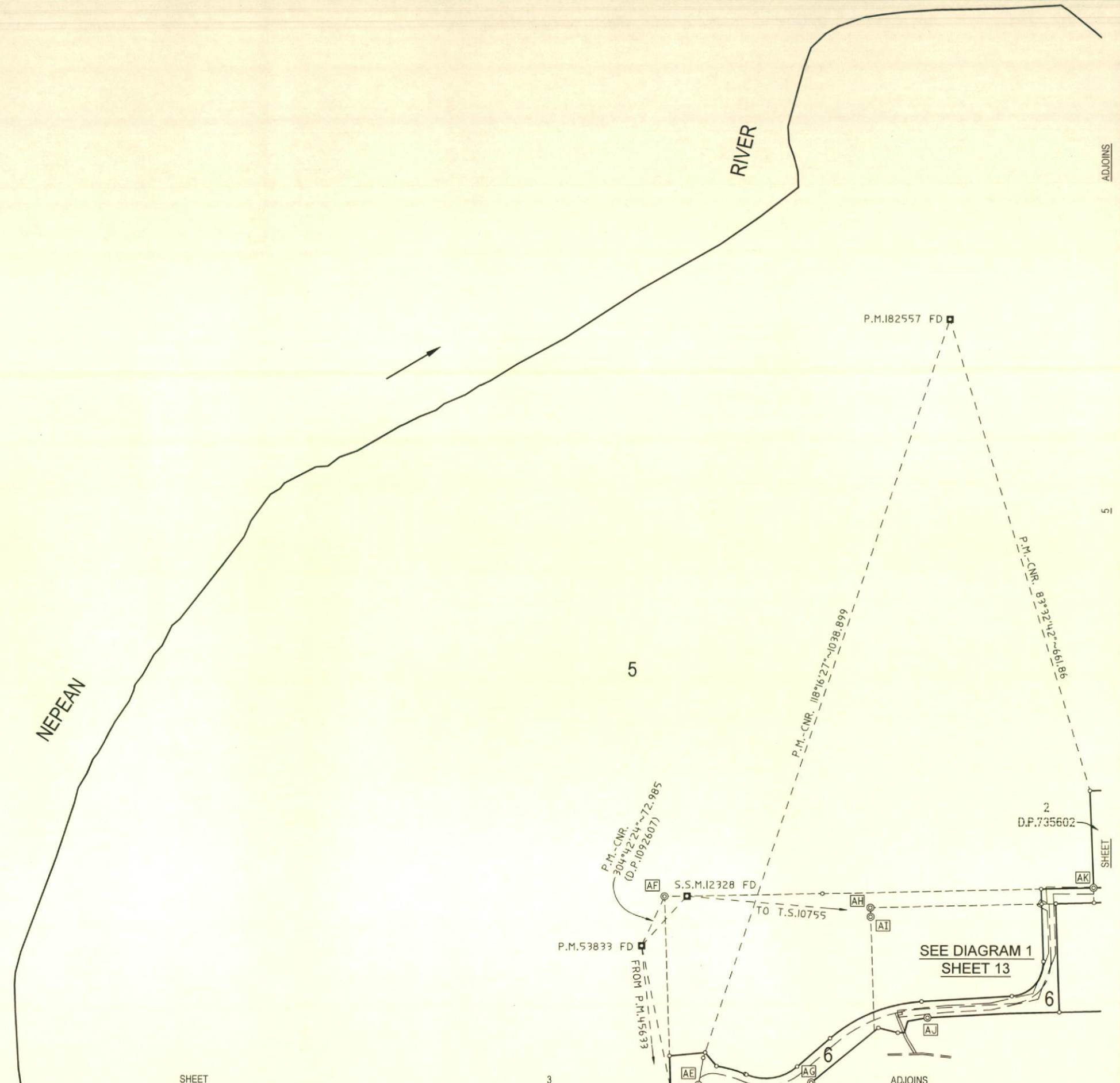
PLAN OF SUBDIVISION OF VARIOUS LOTS (AS SPECIFIED IN TABLE ON SHEET 16)

LGA: PENRITH
Locality: CASTLEREAGH
Subdivision No.
Lengths are in metres. Reduction Ratio 1: 15000

Registered

D.P.





SCHEDULE OF SECONDARY PERMANENT MARK CONNECTIONS

MARKS	SURVEY		MGA-GROUND	
	BEARING	DISTANCE	BEARING	DISTANCE
PM45633 PMS3833	274°03'39"	848.007	274°03'44"	848.003
PMS3833 SSM12328	322°06'31"	89.754	322°06'40"	89.751
SSM12328 TS10755	14°59'03"	640.698	14°58'39"	640.718

SCHEDULE OF REFERENCE MARKS

CNR.	BEARING	DISTANCE	DESCRIPTION
AE	136°49'10"	4.8	G.I.P. FD
AF	304°42'24"	72.985	P.M.53833 FD (D.P.1092607)
AG	222°44'05"	2.21	G.I.P. FD
AH	94°10'45"	1.02	G.I.P. FD
AI	98°21'05"	0.455	G.I.P. FD
AJ	277°17'40"	0.975	G.I.P. FD
AK	279°38'20"	0.57	G.I.P. FD
AK	176°00'10"	41.21	WING CUT CNR SANDSTONE WALL FD (D.P.1092607)

NOTE: SEE SHEET 15 FOR SCHEDULE OF CURVED & SHORT BOUNDARIES

LINES OVER 100m HAVE BEEN MEASURED USING GNSS METHODS

Surveyor: BENJAMIN MEYER
Date of Survey: 8 DECEMBER 2015
Surveyor's Ref: 068-13-OVERALL

PLAN OF SUBDIVISION OF VARIOUS LOTS (AS SPECIFIED IN TABLE ON SHEET 16)

LGA: PENRITH
Locality: CASTLEREAGH
Subdivision No.
Lengths are in metres. Reduction Ratio 1: 4000

Registered

D.P.



NEPEAN RIVER

5

SCHEDULE OF SECONDARY PERMANENT MARK CONNECTIONS

MARKS	SURVEY		MGA-GROUND	
	BEARING	DISTANCE	BEARING	DISTANCE
SSM137550 PM182555	268°59'47"	514.552	268°59'53"	514.545
PM182555 PM45633	252°37'28"	219.858	252°37'24"	219.877
PM45633 PMS3833	274°03'39"	848.007	274°03'44"	848.003
PMS3833 SSM12328	322°06'31"	89.754	322°06'40"	89.751

SCHEDULE OF REFERENCE MARKS

CNR.	BEARING	DISTANCE	DESCRIPTION
Y	219°56'20"	1.015	G.I.P. FD
Z	6°18'20"	1	G.I.P. FD
AA	229°09'20"	7.91	G.I.P. FD
AB	190°58'20"	0.455	BOLT FD
AC	130°57'15"	48.92	P.M.45633 FD
AD	116°35'55"	10.575	D.H.&W. FD
AE	136°49'10"	4.8	G.I.P. FD
AG	222°44'05"	2.21	G.I.P. FD
AJ	277°17'40"	0.975	G.I.P. FD

NOTE: SEE SHEET 15 FOR SCHEDULE OF CURVED & SHORT BOUNDARIES

LINES OVER 100m HAVE BEEN MEASURED USING GNSS METHODS

Surveyor: BENJAMIN MEYER
Date of Survey: 8 DECEMBER 2015
Surveyor's Ref: 068-13-OVERALL

PLAN OF SUBDIVISION OF VARIOUS LOTS (AS SPECIFIED IN TABLE ON SHEET 16)

LGA: PENRITH
Locality: CASTLEREAGH
Subdivision No.
Lengths are in metres. Reduction Ratio 1: 4000

Registered

D.P.



SCHEDULE OF SECONDARY PERMANENT MARK CONNECTIONS

MARKS		SURVEY		MGA-GROUND	
		BEARING	DISTANCE	BEARING	DISTANCE
PM182552	SSM56842	66°42'14"	450.129	66°42'21"	450.120
SSM56842	SSM56987	320°17'38"	23.430	320°17'51"	23.424
SSM56987	SSM95217	7°10'51"	246.726	7°11'03"	246.734
SSM95217	SSM112013	51°26'08"	376.747	51°25'56"	376.744
SSM112013	SSM137550	287°15'33"	1143.553	287°15'30"	1143.555
SSM137550	PM182555	268°59'47"	514.552	268°59'53"	514.545

SCHEDULE OF REFERENCE MARKS

CNR.	BEARING	DISTANCE	DESCRIPTION
A	178°49'40"	16.545 & 3.45	D.H. & W. FD
B	8°10'15"	16.805	D.H. & W. FD
C	178°50'10"	16.51 & 3.415	D.H. & W. FD
D	178°48'25"	16.5 & 3.4	D.H. & W. FD
E	258°44'25"	2.44	S.S.M.56842 FD
F	351°15'40"	3.68	D.H. & W. FD
G	156°31'00"	7.18	D.H. & W. FD
H	3°03'25"	3.85	D.H. & W. FD
I	278°14'25"	3.915	D.H. & W. FD
J	231°18'05"	1.37	G.I.P. FD
K	318°22'45"	5.155	D.H. & W.
L	283°13'00"	3.96	D.H. & W. FD
M	277°20'00"	3.915	D.H. & W. FD
N	337°22'15"	7.75	D.H. & W. FD
O	198°30'00"	17.555	D.H. & W. FD
P	7°45'05"	0.5	G.I.P. FD
Q	7°08'30"	1.01	G.I.P. FD
R	18°34'15"	0.475	G.I.P. FD
S	121°25'20"	1.43	IRON ROD FD
T	186°25'00"	1.115	G.I.P. FD
U	7°09'40"	1	G.I.P. FD
V	263°06'10"	1.08	IRON ROD FD
W	333°10'25"	1.005	G.I.P. FD
X	286°51'15"	0.965	G.I.P. FD
Y	235°16'25"	1.05	G.I.P. FD
Z	219°56'20"	1.015	G.I.P. FD

NOTE: SEE SHEET 15 FOR SCHEDULE OF CURVED & SHORT BOUNDARIES

LINES OVER 100m HAVE BEEN MEASURED USING GNSS METHODS

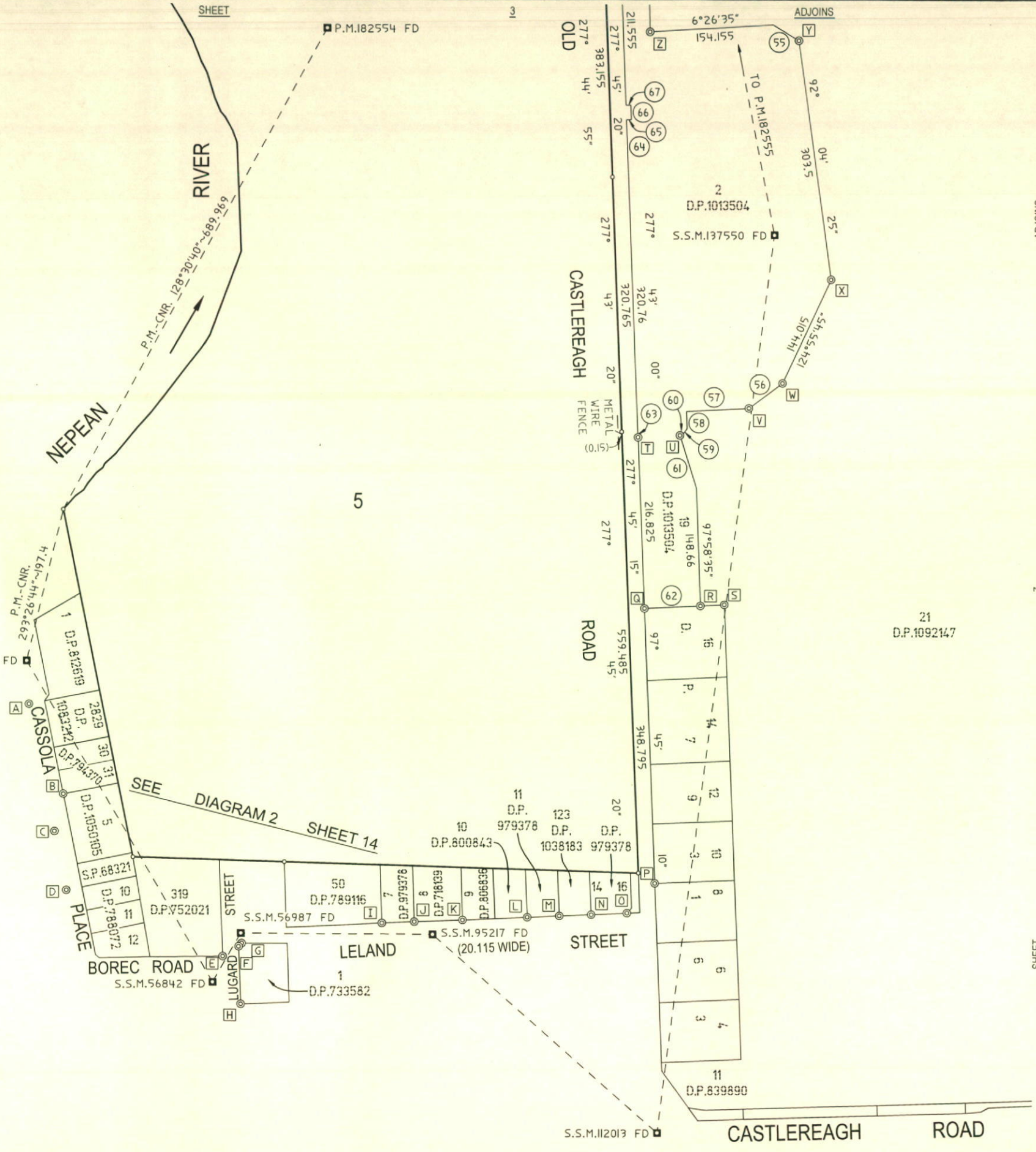
Surveyor: BENJAMIN MEYER
Date of Survey: 8 DECEMBER 2015
Surveyor's Ref: 068-13-OVERALL

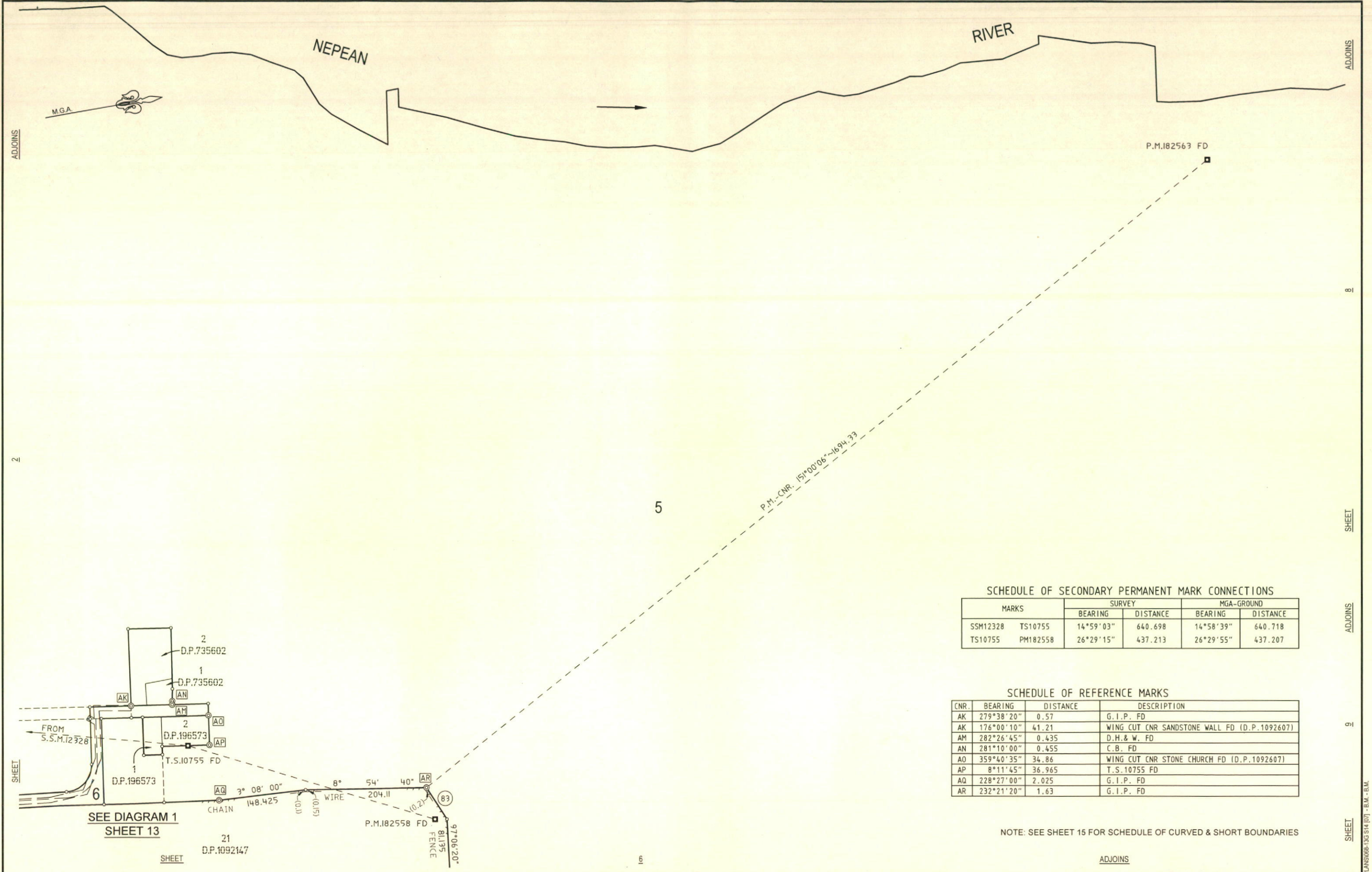
PLAN OF SUBDIVISION OF VARIOUS LOTS (AS SPECIFIED IN TABLE ON SHEET 16)

LGA: PENRITH
Locality: CASTLEREAGH
Subdivision No.
Lengths are in metres. Reduction Ratio 1: 4000

Registered

D.P.





SCHEDULE OF SECONDARY PERMANENT MARK CONNECTIONS

MARKS	SURVEY		MGA-GROUND	
	BEARING	DISTANCE	BEARING	DISTANCE
SSM12328 TS10755	14°59'03"	640.698	14°58'39"	640.718
TS10755 PM182558	26°29'15"	437.213	26°29'55"	437.207

SCHEDULE OF REFERENCE MARKS

CNR.	BEARING	DISTANCE	DESCRIPTION
AK	279°38'20"	0.57	G.I.P. FD
AK	176°00'10"	41.21	WING CUT CNR SANDSTONE WALL FD (D.P.1092607)
AM	282°26'45"	0.435	D.H.& W. FD
AN	281°10'00"	0.455	C.B. FD
AO	359°40'35"	34.86	WING CUT CNR STONE CHURCH FD (D.P.1092607)
AP	8°11'45"	36.965	T.S.10755 FD
AQ	228°27'00"	2.025	G.I.P. FD
AR	232°21'20"	1.63	G.I.P. FD

NOTE: SEE SHEET 15 FOR SCHEDULE OF CURVED & SHORT BOUNDARIES

LINES OVER 100m HAVE BEEN MEASURED USING GNSS METHODS

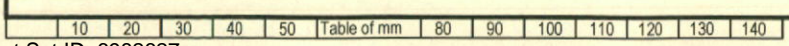
Surveyor: BENJAMIN MEYER
 Date of Survey: 8 DECEMBER 2015
 Surveyor's Ref: 068-13-OVERALL

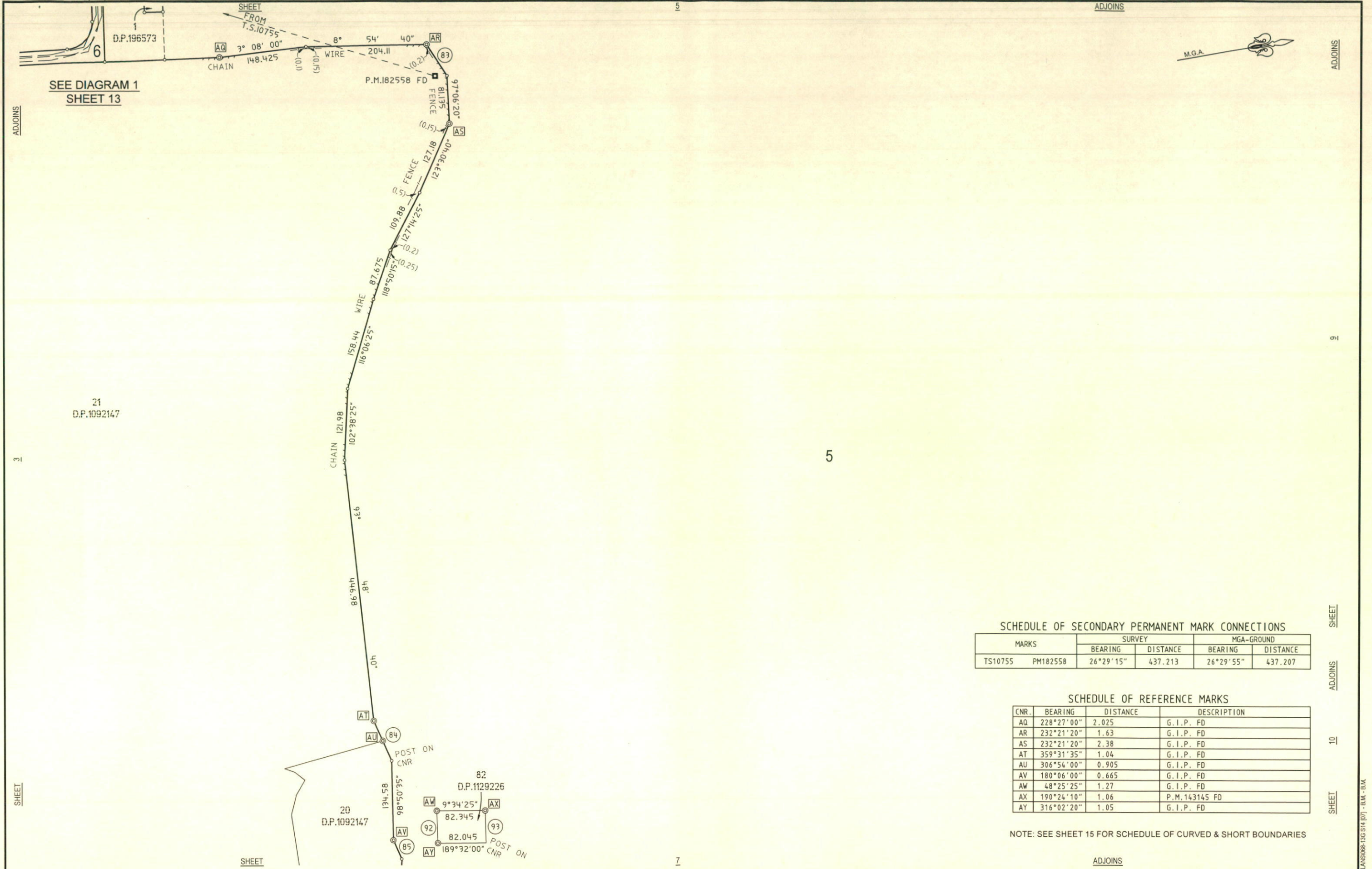
PLAN OF SUBDIVISION OF VARIOUS LOTS (AS SPECIFIED IN TABLE ON SHEET 16)

LGA: PENRITH
 Locality: CASTLEREAGH
 Subdivision No.
 Lengths are in metres. Reduction Ratio 1: 4000

Registered

D.P.





SEE DIAGRAM 1
SHEET 13

SCHEDULE OF SECONDARY PERMANENT MARK CONNECTIONS

MARKS	SURVEY		MGA-GROUND	
	BEARING	DISTANCE	BEARING	DISTANCE
TS10755 PM182558	26°29'15"	437.213	26°29'55"	437.207

SCHEDULE OF REFERENCE MARKS

CNR.	BEARING	DISTANCE	DESCRIPTION
AQ	228°27'00"	2.025	G.I.P. FD
AR	232°21'20"	1.63	G.I.P. FD
AS	232°21'20"	2.38	G.I.P. FD
AT	359°31'35"	1.04	G.I.P. FD
AU	306°54'00"	0.905	G.I.P. FD
AV	180°06'00"	0.665	G.I.P. FD
AW	48°25'25"	1.27	G.I.P. FD
AX	190°24'10"	1.06	P.M.143145 FD
AY	316°02'20"	1.05	G.I.P. FD

NOTE: SEE SHEET 15 FOR SCHEDULE OF CURVED & SHORT BOUNDARIES

LINES OVER 100m HAVE
BEEN MEASURED USING
GNSS METHODS

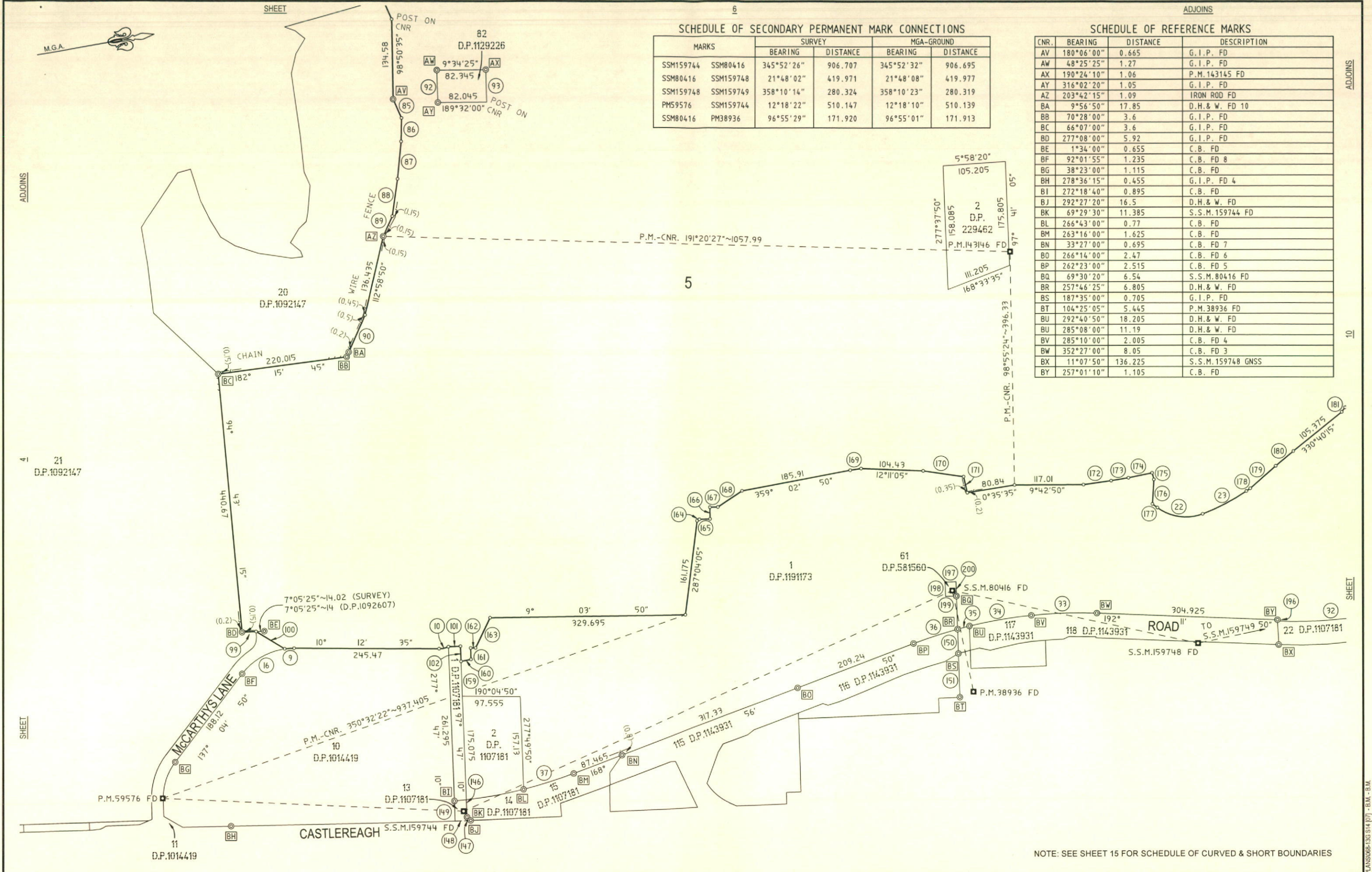
Surveyor: BENJAMIN MEYER
Date of Survey: 8 DECEMBER 2015
Surveyor's Ref: 068-13-OVERALL

PLAN OF
SUBDIVISION OF VARIOUS LOTS
(AS SPECIFIED IN TABLE ON SHEET 16)

LGA: PENRITH
Locality: CASTLEREAGH
Subdivision No.
Lengths are in metres, Reduction Ratio 1: 4000

Registered

D.P.



SCHEDULE OF SECONDARY PERMANENT MARK CONNECTIONS

MARKS	SURVEY		MGA-GROUND	
	BEARING	DISTANCE	BEARING	DISTANCE
SSM159744 SSM80416	345°52'26"	906.707	345°52'32"	906.695
SSM80416 SSM159748	21°48'02"	419.971	21°48'08"	419.977
SSM159748 SSM159749	358°10'14"	280.324	358°10'23"	280.319
PMS9576 SSM159744	12°18'22"	510.147	12°18'10"	510.139
SSM80416 PM38936	96°55'29"	171.920	96°55'01"	171.913

SCHEDULE OF REFERENCE MARKS

CNR.	BEARING	DISTANCE	DESCRIPTION
AV	180°06'00"	0.665	G.I.P. FD
AW	48°25'25"	1.27	G.I.P. FD
AX	190°24'10"	1.06	P.M.143145 FD
AY	316°02'20"	1.05	G.I.P. FD
AZ	203°42'15"	1.09	IRON ROD FD
BA	9°56'50"	17.85	D.H.& W. FD 10
BB	70°28'00"	3.6	G.I.P. FD
BC	66°07'00"	3.6	G.I.P. FD
BD	277°08'00"	5.92	G.I.P. FD
BE	1°34'00"	0.655	C.B. FD
BF	92°01'55"	1.235	C.B. FD 8
BG	38°23'00"	1.115	C.B. FD
BH	278°36'15"	0.455	G.I.P. FD 4
BI	272°18'40"	0.895	C.B. FD
BJ	292°27'20"	16.5	D.H.& W. FD
BK	69°29'30"	11.385	S.S.M.159744 FD
BL	266°43'00"	0.77	C.B. FD
BM	263°16'00"	1.625	C.B. FD
BN	33°27'00"	0.695	C.B. FD 7
BO	266°14'00"	2.47	C.B. FD 6
BP	262°23'00"	2.515	C.B. FD 5
BQ	69°30'20"	6.54	S.S.M.80416 FD
BR	257°46'25"	6.805	D.H.& W. FD
BS	187°35'00"	0.705	G.I.P. FD
BT	104°25'05"	5.445	P.M.38936 FD
BU	292°40'50"	18.205	D.H.& W. FD
BV	285°08'00"	11.19	D.H.& W. FD
BW	285°10'00"	2.005	C.B. FD 4
BX	352°27'00"	8.05	C.B. FD 3
BY	11°07'50"	136.225	S.S.M.159748 GNSS
BY	257°01'10"	1.105	C.B. FD

LINES OVER 100m HAVE BEEN MEASURED USING GNSS METHODS

Surveyor: BENJAMIN MEYER
 Date of Survey: 8 DECEMBER 2015
 Surveyor's Ref: 068-13-OVERALL

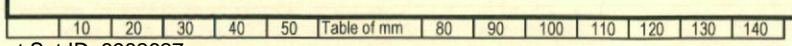
PLAN OF SUBDIVISION OF VARIOUS LOTS (AS SPECIFIED IN TABLE ON SHEET 16)

LGA: PENRITH
 Locality: CASTLEREAGH
 Subdivision No.
 Lengths are in metres. Reduction Ratio 1: 4000

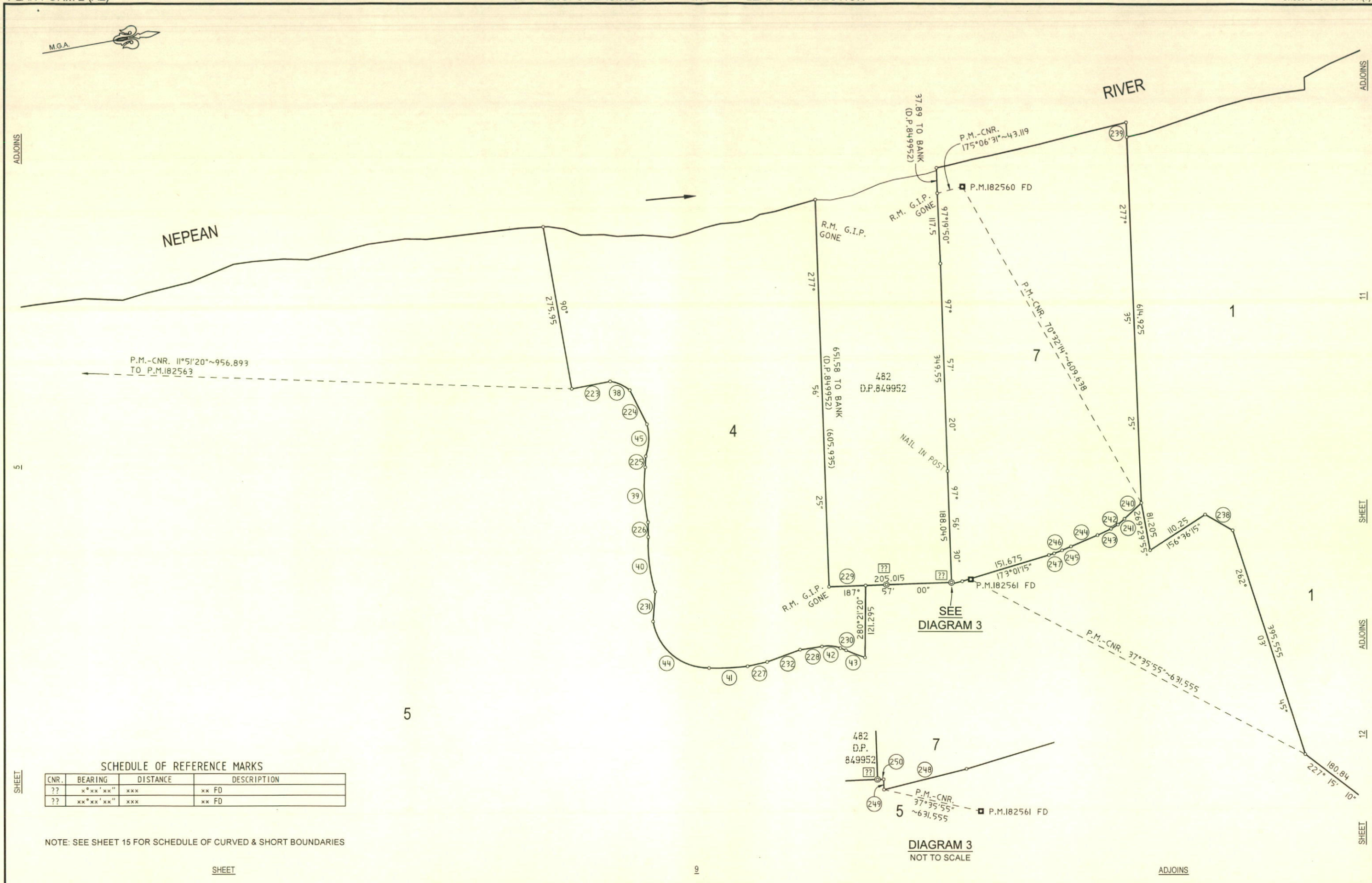
Registered

D.P.

NOTE: SEE SHEET 15 FOR SCHEDULE OF CURVED & SHORT BOUNDARIES



CAD REF: Z:\088-13\CR\PLANS\068-13\514\071 - B.M. - B.M.



SCHEDULE OF REFERENCE MARKS

CNR.	BEARING	DISTANCE	DESCRIPTION
??	x°xx'xx"	xxx	xx FD
??	xx°xx'xx"	xxx	xx FD

NOTE: SEE SHEET 15 FOR SCHEDULE OF CURVED & SHORT BOUNDARIES

SHEET

LINES OVER 100m HAVE BEEN MEASURED USING GNSS METHODS

Surveyor: BENJAMIN MEYER
 Date of Survey: 8 DECEMBER 2015
 Surveyor's Ref. 068-13-OVERALL

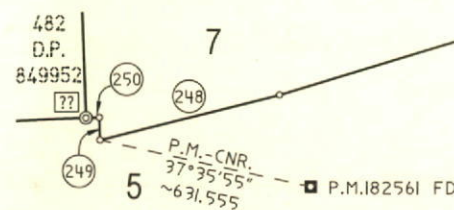
PLAN OF SUBDIVISION OF VARIOUS LOTS (AS SPECIFIED IN TABLE ON SHEET 16)

LGA: PENRITH
 Locality: CASTLEREAGH
 Subdivision No.
 Lengths are in metres. Reduction Ratio 1: 4000

Registered

D.P.

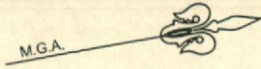
DIAGRAM 3 NOT TO SCALE



SHEET

8

ADJOINS



ADJOINS

5

SHEET

ADJOINS

5

SHEET

SHEET

10 20 30 40 50 Table of mm 80 90 100 110 120 130 140

5

12

SHEET

ADJOINS

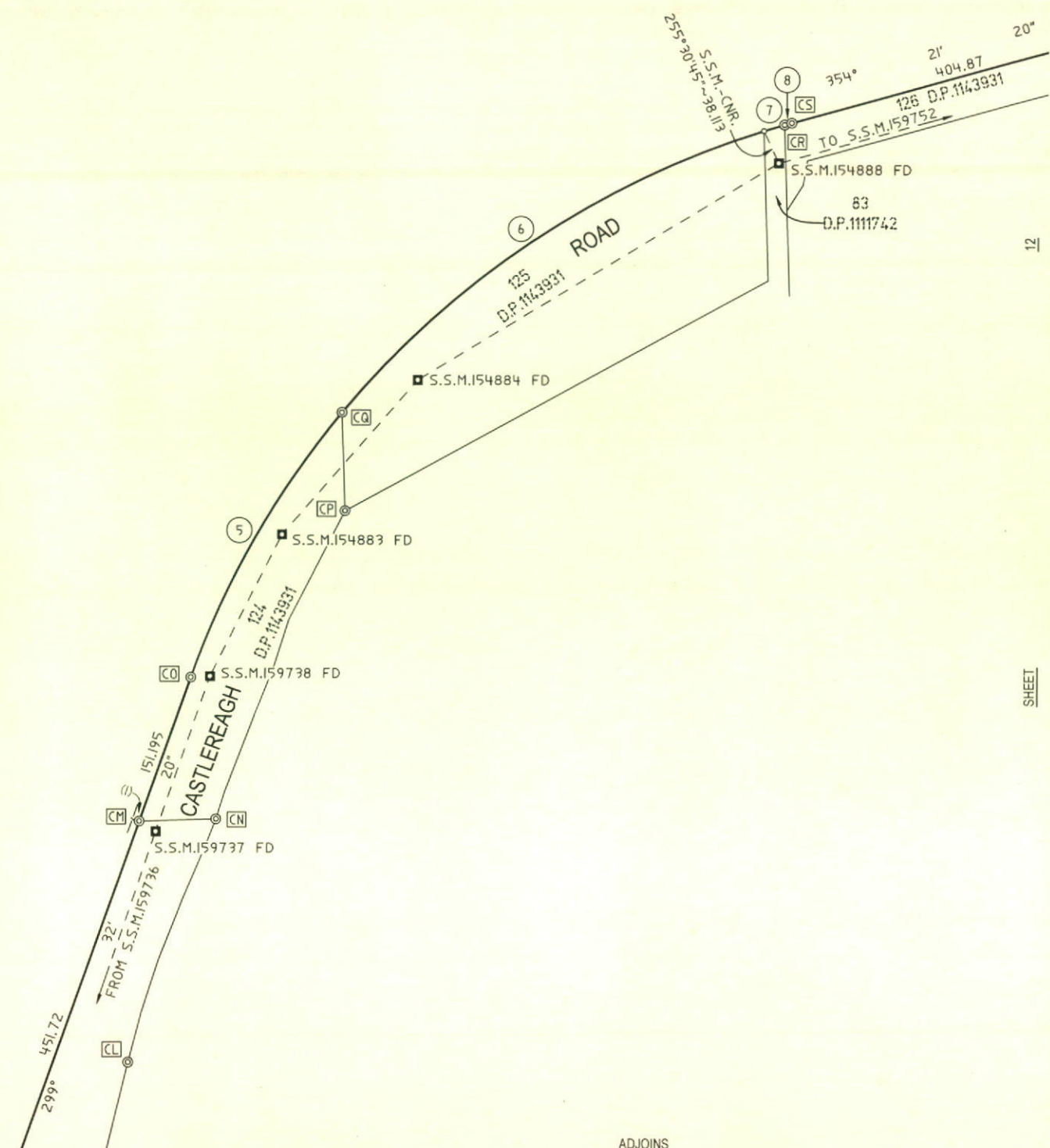
SCHEDULE OF SECONDARY PERMANENT MARK CONNECTIONS

MARKS		SURVEY		MGA-GROUND	
		BEARING	DISTANCE	BEARING	DISTANCE
SSM159736	SSM159737	299°31'39"	452.077	299°31'36"	452.081
SSM159737	SSM159738	299°28'44"	151.034	299°28'35"	151.046
SSM159738	SSM154883	316°18'27"	168.298	316°18'50"	168.297
SSM154883	SSM154884	317°26'11"	201.500	317°26'11"	201.498
SSM154884	SSM154888	339°07'46"	413.702	339°07'46"	413.701
SSM154888	SSM159752	354°28'46"	361.633	354°28'48"	361.624

SCHEDULE OF REFERENCE MARKS

CNR.	BEARING	DISTANCE	DESCRIPTION
CL	22°56'25"	1.82	G.I.P. FD 3
CM	212°45'00"	0.655	S.S.M.159737 GNSS
CN	24°58'40"	1.33	G.I.P. FD 1
CO	231°10'00"	0.535	S.S.M.159738 GNSS
CP	301°02'20"	6.45	G.I.P. FD 2
CQ	231°09'00"	2.325	C.B. FD
CR	271°17'00"	1	G.I.P. FD
CS	257°04'00"	1	G.I.P. FD

NOTE: SEE SHEET 15 FOR SCHEDULE OF CURVED & SHORT BOUNDARIES



LINES OVER 100m HAVE BEEN MEASURED USING GNSS METHODS

Surveyor: BENJAMIN MEYER
Date of Survey: 8 DECEMBER 2015
Surveyor's Ref: 068-13-OVERALL

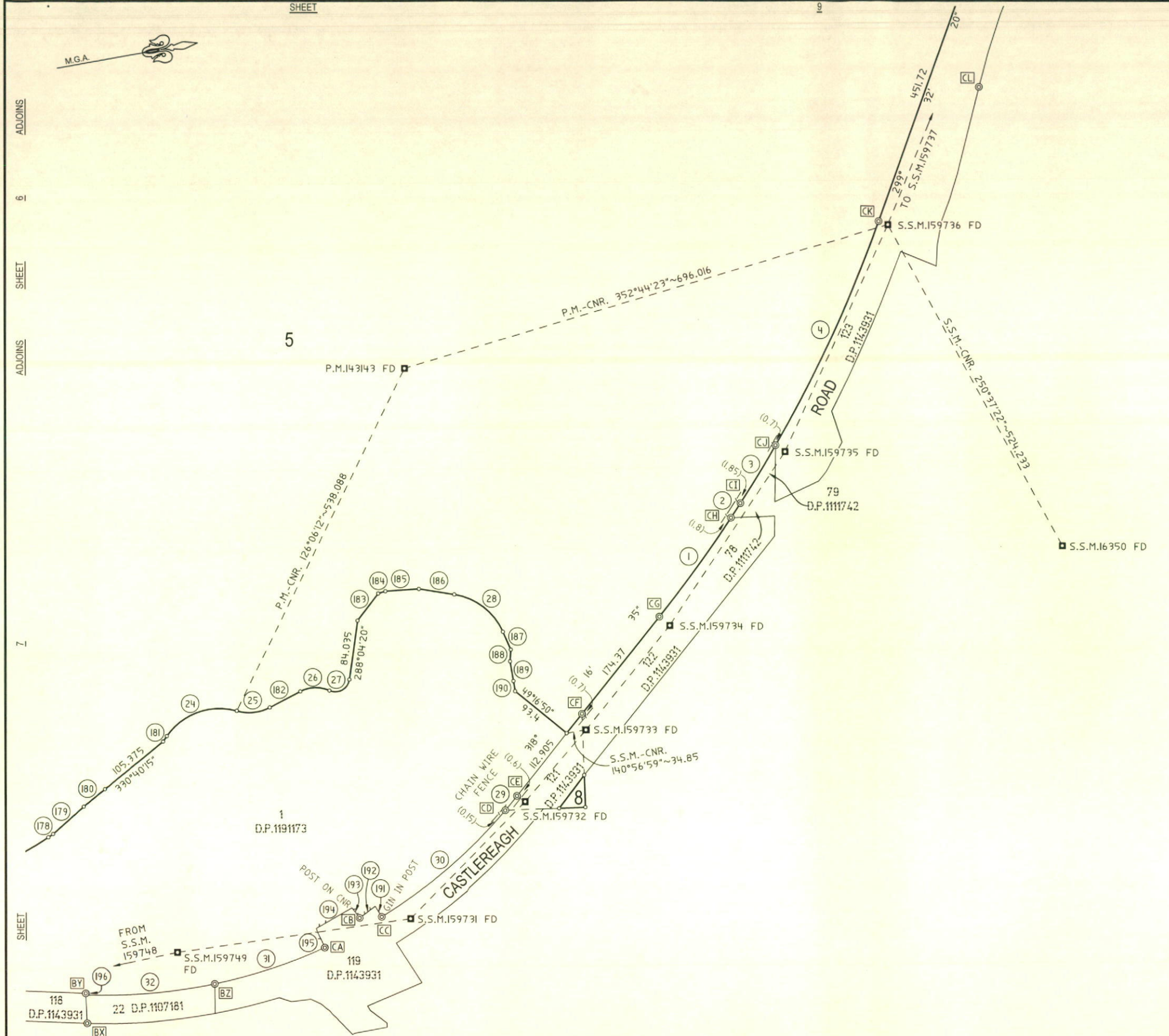
PLAN OF SUBDIVISION OF VARIOUS LOTS (AS SPECIFIED IN TABLE ON SHEET 16)

LGA: PENRITH
Locality: CASTLEREAGH
Subdivision No.
Lengths are in metres. Reduction Ratio 1: 4000

Registered

D.P.

CAD REF: Z:\068-13-OCR_PLANS\068-13-0514-DT1 - B.M. - B.M.



SCHEDULE OF SECONDARY PERMANENT MARK CONNECTIONS

MARKS		SURVEY		MGA-GROUND	
		BEARING	DISTANCE	BEARING	DISTANCE
SSM159748	SSM159749	358°10'14"	280.324	358°10'23"	280.319
SSM159749	SSM159731	350°46'34"	319.296	350°46'39"	319.313
SSM159731	SSM159732	327°34'06"	225.716	327°33'38"	225.697
SSM159732	SSM159733	318°15'02"	147.880	318°15'07"	147.909
SSM159733	SSM159734	317°57'34"	174.482	317°57'36"	174.471
SSM159734	SSM159735	313°56'59"	291.897	313°56'48"	291.901
SSM159735	SSM159736	304°40'40"	346.336	304°40'49"	346.334
SSM159736	SSM159737	299°31'39"	452.077	299°31'36"	452.081

SCHEDULE OF REFERENCE MARKS

CNR.	BEARING	DISTANCE	DESCRIPTION
BX	11°07'50"	136.225	S.S.M. 159748 GNSS
BY	257°01'10"	1.105	C.B. FD
BZ	355°59'00"	0.48	C.B. FD 1
CA	258°29'00"	0.725	G.I.P. FD
CB	316°01'30"	29.695	C.B. FD
CC	246°04'00"	0.635	G.I.P. FD
CD	232°13'00"	3.465	C.B. FD
CE	233°44'00"	1.7	S.S.M. 159732 FD
CF	228°08'00"	1.62	S.S.M. 159733 GNSS
CG	218°43'00"	0.67	S.S.M. 159734 GNSS
CH	226°50'05"	1.015	C.B. FD
CI	232°44'50"	0.745	C.B. FD
CJ	203°12'00"	0.465	S.S.M. 159732 FD
CK	237°39'00"	0.84	S.S.M. 159733 GNSS
CL	22°56'25"	1.82	G.I.P. FD 3

NOTE: SEE SHEET 15 FOR SCHEDULE OF CURVED & SHORT BOUNDARIES

LINES OVER 100m HAVE BEEN MEASURED USING GNSS METHODS

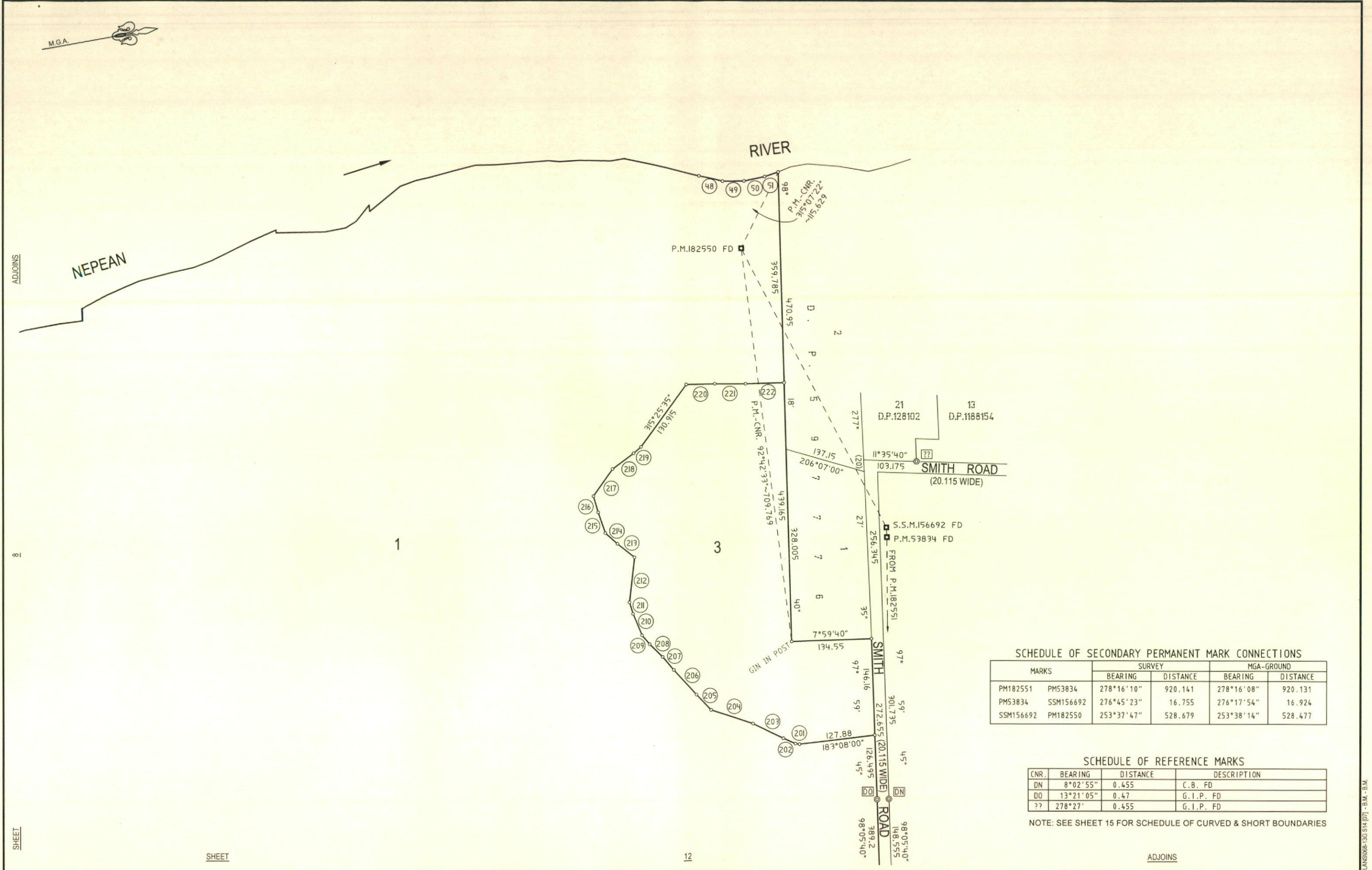
Surveyor: BENJAMIN MEYER
Date of Survey: 8 DECEMBER 2015
Surveyor's Ref: 068-13-OVERALL

PLAN OF SUBDIVISION OF VARIOUS LOTS (AS SPECIFIED IN TABLE ON SHEET 16)

LGA: PENRITH
Locality: CASTLEREAGH
Subdivision No.
Lengths are in metres. Reduction Ratio 1: 4000

Registered

D.P.



SCHEDULE OF SECONDARY PERMANENT MARK CONNECTIONS

MARKS	SURVEY		MGA-GROUND	
	BEARING	DISTANCE	BEARING	DISTANCE
PM182551 PM53834	278°16'10"	920.141	278°16'08"	920.131
PM53834 SSM156692	276°45'23"	16.755	276°17'54"	16.924
SSM156692 PM182550	253°37'47"	528.679	253°38'14"	528.477

SCHEDULE OF REFERENCE MARKS

CNR.	BEARING	DISTANCE	DESCRIPTION
DN	8°02'55"	0.455	C.B. FD
DO	13°21'05"	0.47	G.I.P. FD
??	278°27'	0.455	G.I.P. FD

NOTE: SEE SHEET 15 FOR SCHEDULE OF CURVED & SHORT BOUNDARIES

LINES OVER 100m HAVE BEEN MEASURED USING GNSS METHODS

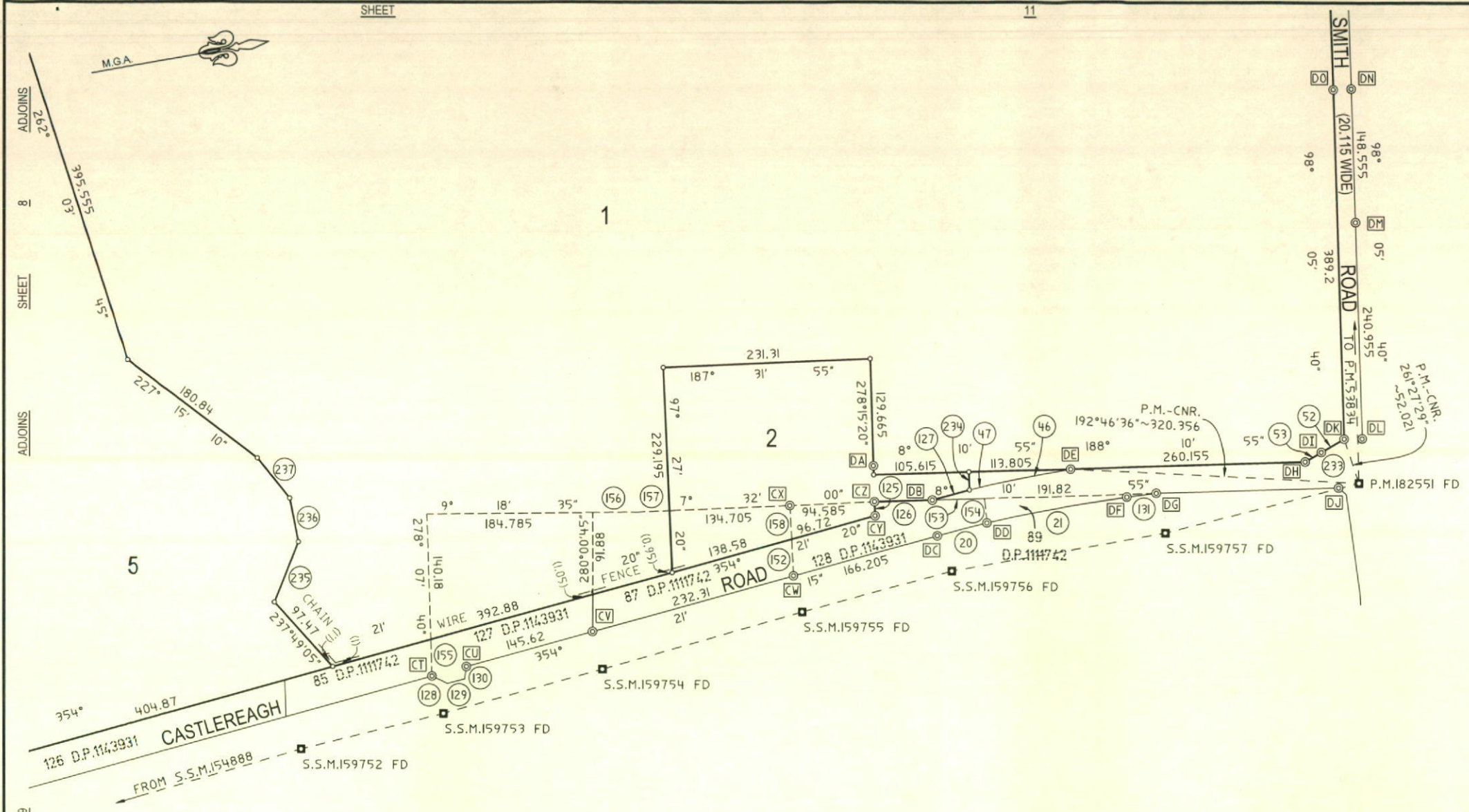
Surveyor: BENJAMIN MEYER
 Date of Survey: 8 DECEMBER 2015
 Surveyor's Ref: 068-13-OVERALL

PLAN OF SUBDIVISION OF VARIOUS LOTS (AS SPECIFIED IN TABLE ON SHEET 16)

LGA: PENRITH
 Locality: CASTLEREAGH
 Subdivision No.
 Lengths are in metres, Reduction Ratio 1: 4000

Registered

D.P.



SCHEDULE OF SECONDARY PERMANENT MARK CONNECTIONS

MARKS	SURVEY		MGA-GROUND	
	BEARING	DISTANCE	BEARING	DISTANCE
SSM154888 SSM159752	354°28'46"	361.633	354°28'48"	361.624
SSM159752 SSM159753	354°25'02"	170.274	354°24'22"	170.303
SSM159753 SSM159754	354°18'58"	185.741	354°19'07"	185.734
SSM159754 SSM159755	354°17'58"	232.062	354°18'03"	232.054
SSM159755 SSM159756	354°21'54"	166.422	354°21'57"	166.420
SSM159756 SSM159757	358°53'45"	248.840	358°53'53"	248.837
SSM159757 PM182551	7°21'35"	224.827	7°21'36"	224.828
PM182551 PMS3834	278°16'10"	920.141	278°16'08"	920.131

SCHEDULE OF REFERENCE MARKS

CNR.	BEARING	DISTANCE	DESCRIPTION
CT	90°56'55"	0.945	S.S.M.159753 FD
CU	85°20'20"	0.955	G.I.P. FD
CV	92°31'55"	1.07	S.S.M.159754 FD
CW	80°11'50"	1.285	S.S.M.159755 FD
CX	97°02'15"	0.445	G.I.P. FD
CY	273°42'10"	1.02	G.I.P. FD
CZ	65°23'55"	1.28	G.I.P. FD
DA	286°37'30"	0.46	C.B. FD
DB	151°14'25"	0.6	G.I.P. FD
DB	334°48'25"	3.685	C.B. FD
DC	90°02'55"	1.255	S.S.M.159756 FD
DD	273°15'30"	0.875	G.I.P. FD
DE	269°21'05"	0.845	G.I.P. FD
DF	92°37'50"	1.725	C.B. FD
DG	98°30'50"	1.29	S.S.M.159757 FD
DH	284°07'35"	0.515	G.I.P. FD
DI	278°11'15"	0.46	C.B. FD
DJ	128°11'55"	11.335	D.H. & W. FD
DK	215°50'00"	6.335	D.H. & W. FD
DL	8°05'35"	0.455	C.B. FD
DM	8°06'00"	0.445	C.B. FD
DN	8°02'55"	0.455	C.B. FD
DO	13°21'05"	0.47	G.I.P. FD

NOTE: SEE SHEET 15 FOR SCHEDULE OF CURVED & SHORT BOUNDARIES

LINES OVER 100m HAVE BEEN MEASURED USING GNSS METHODS

Surveyor: BENJAMIN MEYER
Date of Survey: 8 DECEMBER 2015
Surveyor's Ref. 068-13-OVERALL

PLAN OF SUBDIVISION OF VARIOUS LOTS (AS SPECIFIED IN TABLE ON SHEET 16)

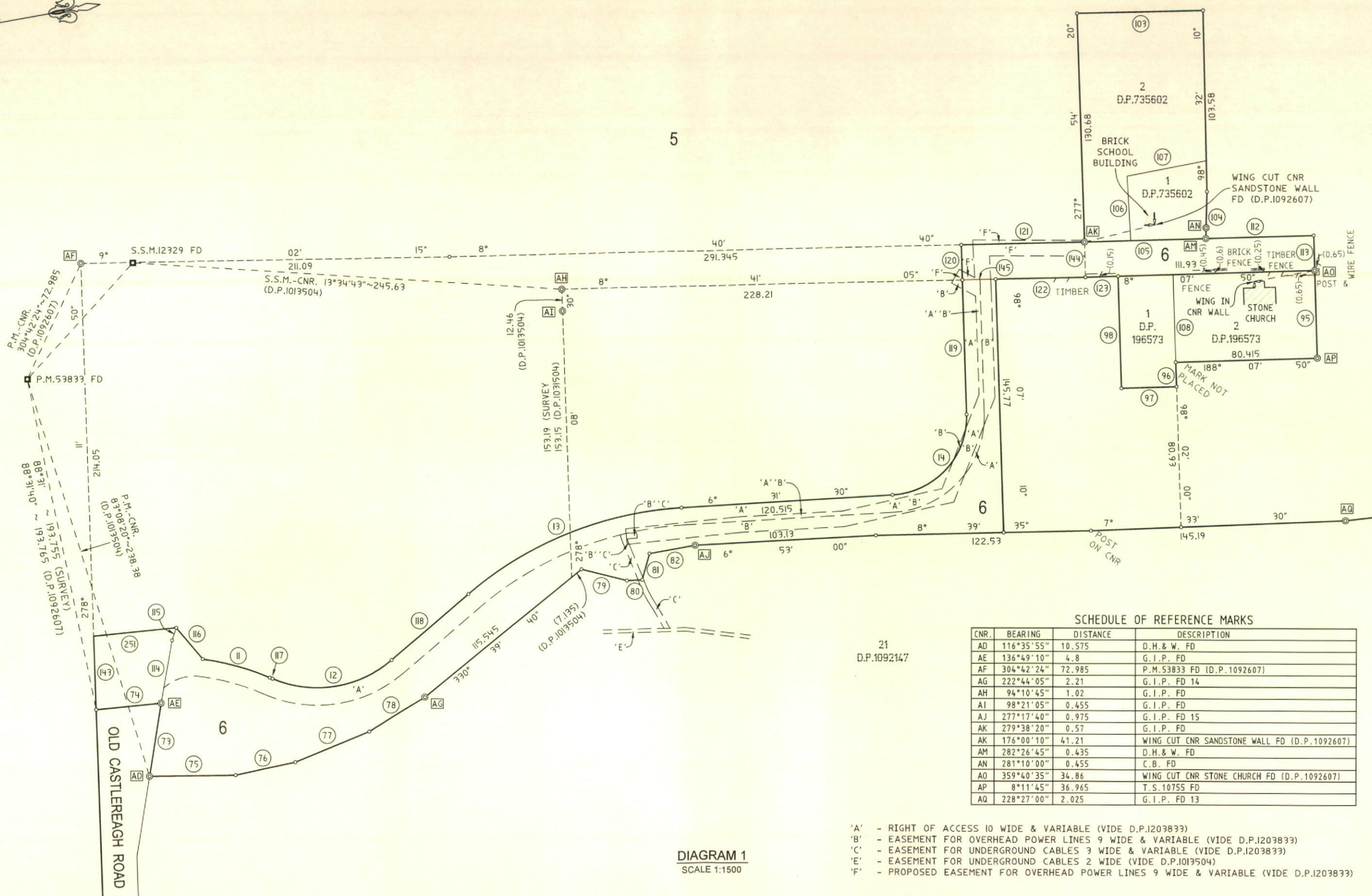
LGA: PENRITH
Locality: CASTLEREAGH
Subdivision No.
Lengths are in metres. Reduction Ratio 1: 4000

Registered

D.P.



5



SCHEDULE OF REFERENCE MARKS

CNR.	BEARING	DISTANCE	DESCRIPTION
AD	116°35'55"	10.575	D.H. & W. FD
AE	136°49'10"	4.8	G.I.P. FD
AF	304°42'24"	72.985	P.M.53833 FD (D.P.1092607)
AG	222°44'05"	2.21	G.I.P. FD 14
AH	94°10'45"	1.02	G.I.P. FD
AI	98°21'05"	0.455	G.I.P. FD
AJ	277°17'40"	0.975	G.I.P. FD 15
AK	279°38'20"	0.57	G.I.P. FD
AL	176°00'10"	41.21	WING CUT CNR SANDSTONE WALL FD (D.P.1092607)
AM	282°26'45"	0.435	D.H. & W. FD
AN	281°10'00"	0.455	C.B. FD
AO	359°40'35"	34.86	WING CUT CNR STONE CHURCH FD (D.P.1092607)
AP	8°11'45"	36.965	T.S.10755 FD
AQ	228°27'00"	2.025	G.I.P. FD 13

21
D.P.1092147

DIAGRAM 1
SCALE 1:1500

- 'A' - RIGHT OF ACCESS 10 WIDE & VARIABLE (VIDE D.P.1203833)
- 'B' - EASEMENT FOR OVERHEAD POWER LINES 9 WIDE & VARIABLE (VIDE D.P.1203833)
- 'C' - EASEMENT FOR UNDERGROUND CABLES 3 WIDE & VARIABLE (VIDE D.P.1203833)
- 'E' - EASEMENT FOR UNDERGROUND CABLES 2 WIDE (VIDE D.P.1013504)
- 'F' - PROPOSED EASEMENT FOR OVERHEAD POWER LINES 9 WIDE & VARIABLE (VIDE D.P.1203833)

LINES OVER 100m HAVE BEEN MEASURED USING GNSS METHODS

Surveyor: BENJAMIN MEYER
Date of Survey: 8 DECEMBER 2015
Surveyor's Ref. 068-13-OVERALL

PLAN OF SUBDIVISION OF VARIOUS LOTS (AS SPECIFIED IN TABLE ON SHEET 16)

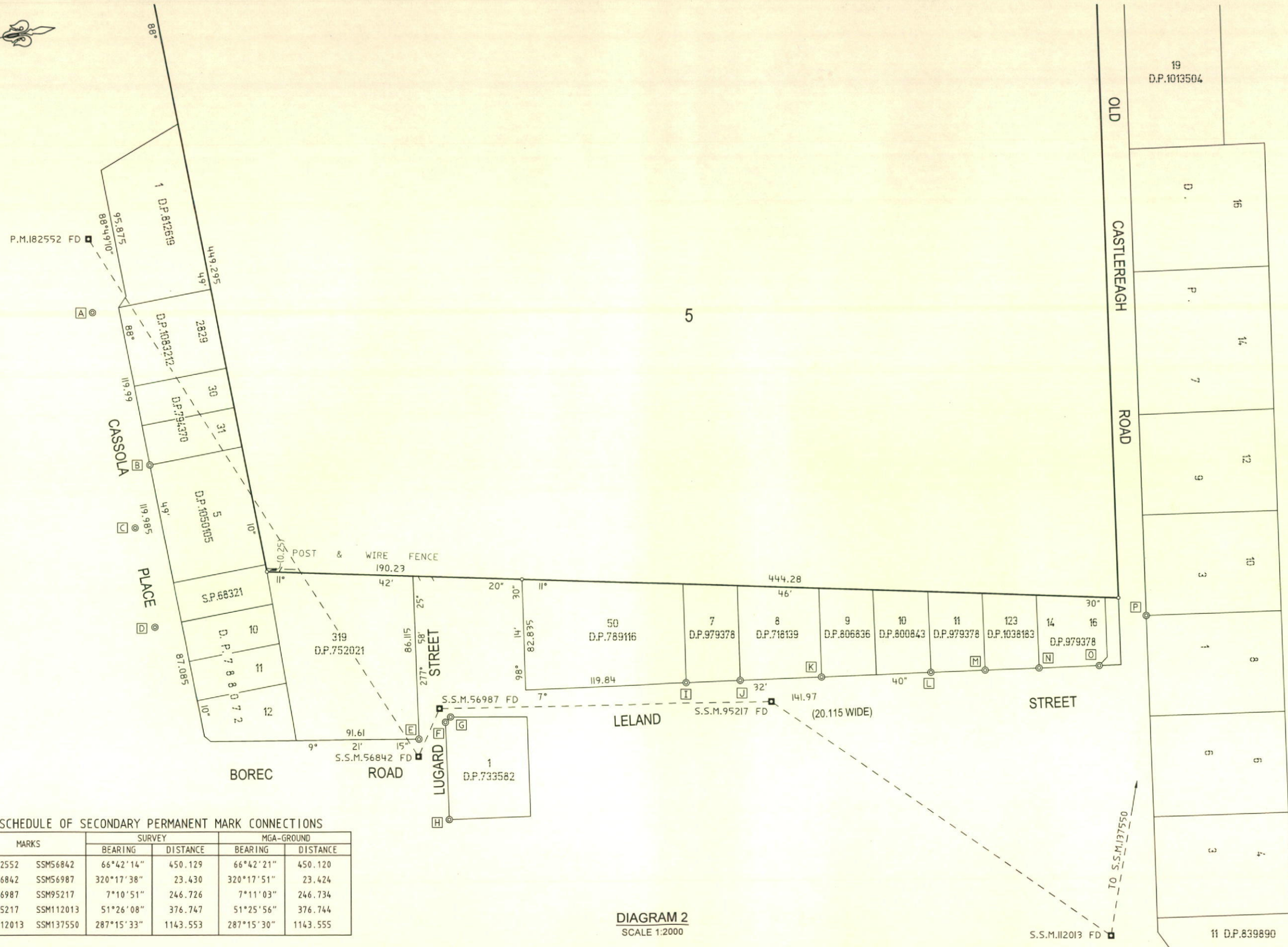
LGA: PENRITH
Locality: CASTLEREAGH
Subdivision No.
Lengths are in metres. Reduction Ratio 1: 1500

Registered

D.P.

10	20	30	40	50	60	70	80	90	100	110	120	130	140
----	----	----	----	----	----	----	----	----	-----	-----	-----	-----	-----

CAD REF: Z:\068-13\CR_PLANS\068-13\514\071 - B.M. - B.M.



SCHEDULE OF SECONDARY PERMANENT MARK CONNECTIONS

MARKS	SURVEY		MGA-GROUND	
	BEARING	DISTANCE	BEARING	DISTANCE
PM182552 SSM56842	66°42'14"	450.129	66°42'21"	450.120
SSM56842 SSM56987	320°17'38"	23.430	320°17'51"	23.424
SSM56987 SSM95217	7°10'51"	246.726	7°11'03"	246.734
SSM95217 SSM112013	51°26'08"	376.747	51°25'56"	376.744
SSM112013 SSM137550	287°15'33"	1143.553	287°15'30"	1143.555

DIAGRAM 2
SCALE 1:2000

LINES OVER 100m HAVE BEEN MEASURED USING GNSS METHODS

Surveyor: BENJAMIN MEYER
Date of Survey: 8 DECEMBER 2015
Surveyor's Ref: 068-13-OVERALL

PLAN OF SUBDIVISION OF VARIOUS LOTS (AS SPECIFIED IN TABLE ON SHEET 16)

LGA: PENRITH
Locality: CASTLEREAGH
Subdivision No.
Lengths are in metres. Reduction Ratio: 1: 1500

Registered

D.P.

SCHEDULE OF CURVED BOUNDARIES

Table with 5 columns: No, BEARING, CHORD, ARC, RADIUS. Rows 1-47.

SCHEDULE OF SHORT BOUNDARIES

Table with 12 columns: No, BEARING, DISTANCE. Rows 48-99.

SURVEYING & SPATIAL INFORMATION REGULATION 2012 CLAUSE 61 (2) M.G.A. COORDINATES table with 6 columns: MARK, EASTING, NORTHING, ZONE, CLASS, ORDER. Rows 205-251.

Surveyor: BENJAMIN MEYER
Date of Survey: 8 DECEMBER 2015
Surveyor's Ref: 068-13-OVERALL

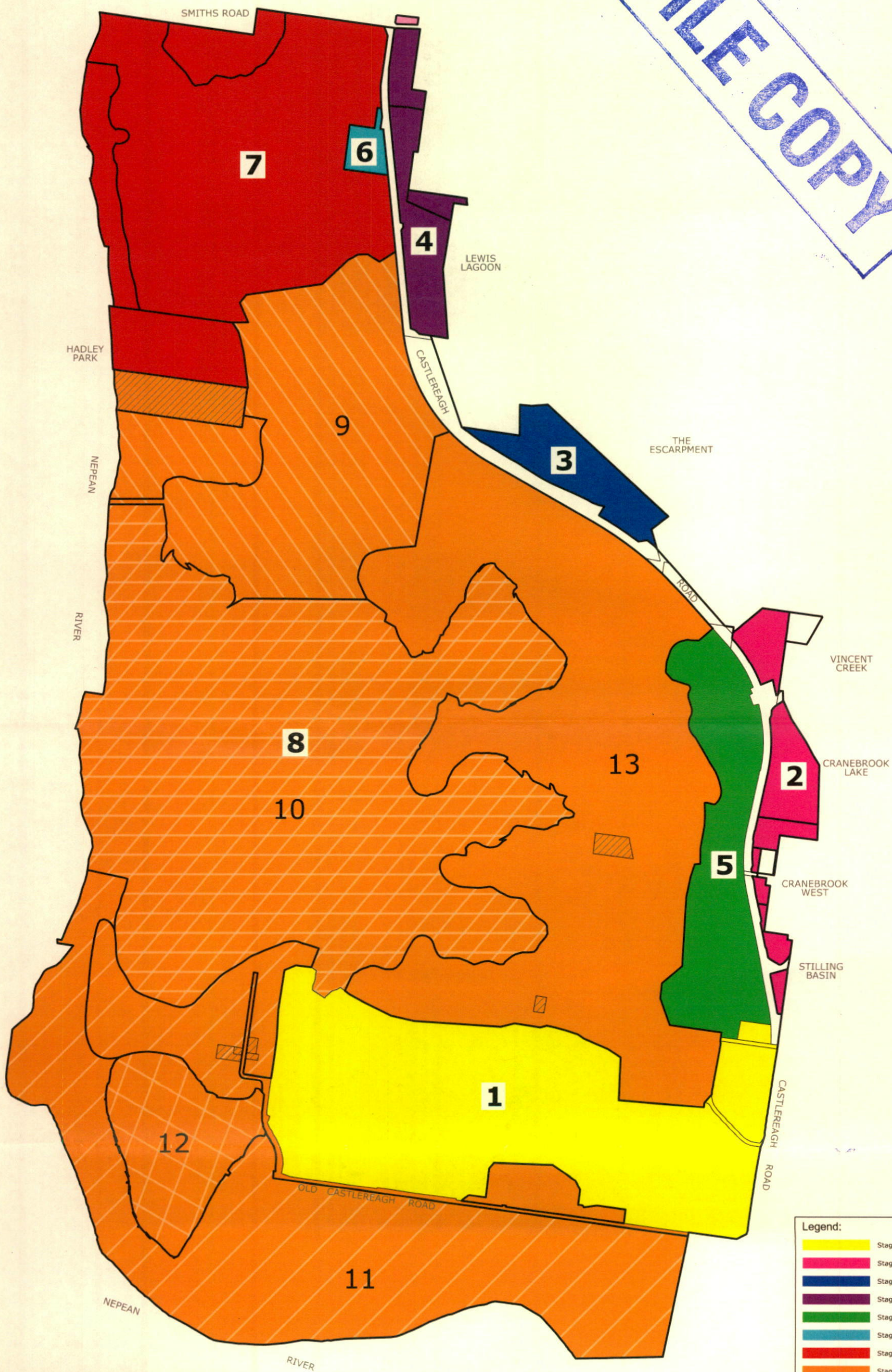
PLAN OF
SUBDIVISION OF VARIOUS LOTS
(AS SPECIFIED IN TABLE ON SHEET 16)

LGA: PENRITH
Locality: CASTLEREAGH
Subdivision No.
Lengths are in metres. Reduction Ratio: 1: 4000

Registered

D.P.

FILE COPY



- Legend:**
- Stage 1 - SIRC - Registered
 - Stage 2 - Eastern Lands
 - Stage 3 - The Escarpment
 - Stage 4 - Lewis Lagoon
 - Stage 5 - Eastern Lakes
 - Stage 6 - Landers Inn
 - Stage 7 - Wildlife Lake
 - Stage 8 - Balance of Scheme

Rev	Date	Description	Drafted By	Designed By	Checked By	Approved By
A	12/11/2014	FOR INFORMATION - NOT FOR CONSTRUCTION	TPK			

Notes:

Scale Bar
0 100 200 300 400 500
Metres

Projection
MGA Zone 56

Sheet Size
ISO A3

Print Scale
1:20000

Title
Staging Plan - Superlots

Drawing No:
PLDC - 11873

Revision
A

