

46-66 O'CONNELL STREET | CADDENS  
BEP & MASTERPLAN | 07 MAY 2020

# PBD | ARCHITECTS



# PBD | ARCHITECTS

---

46-66 O'CONNELL STREET | CADDENS

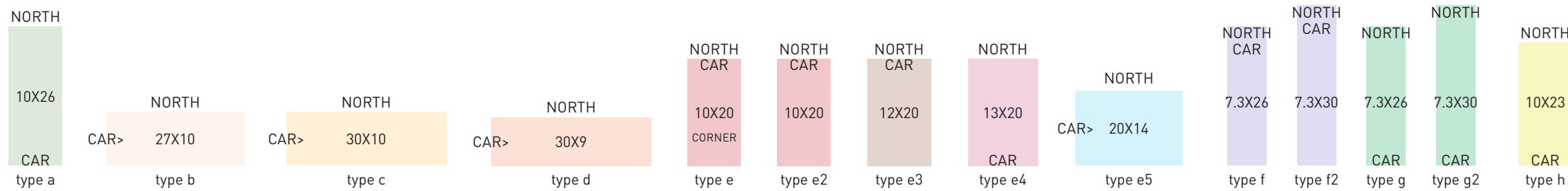
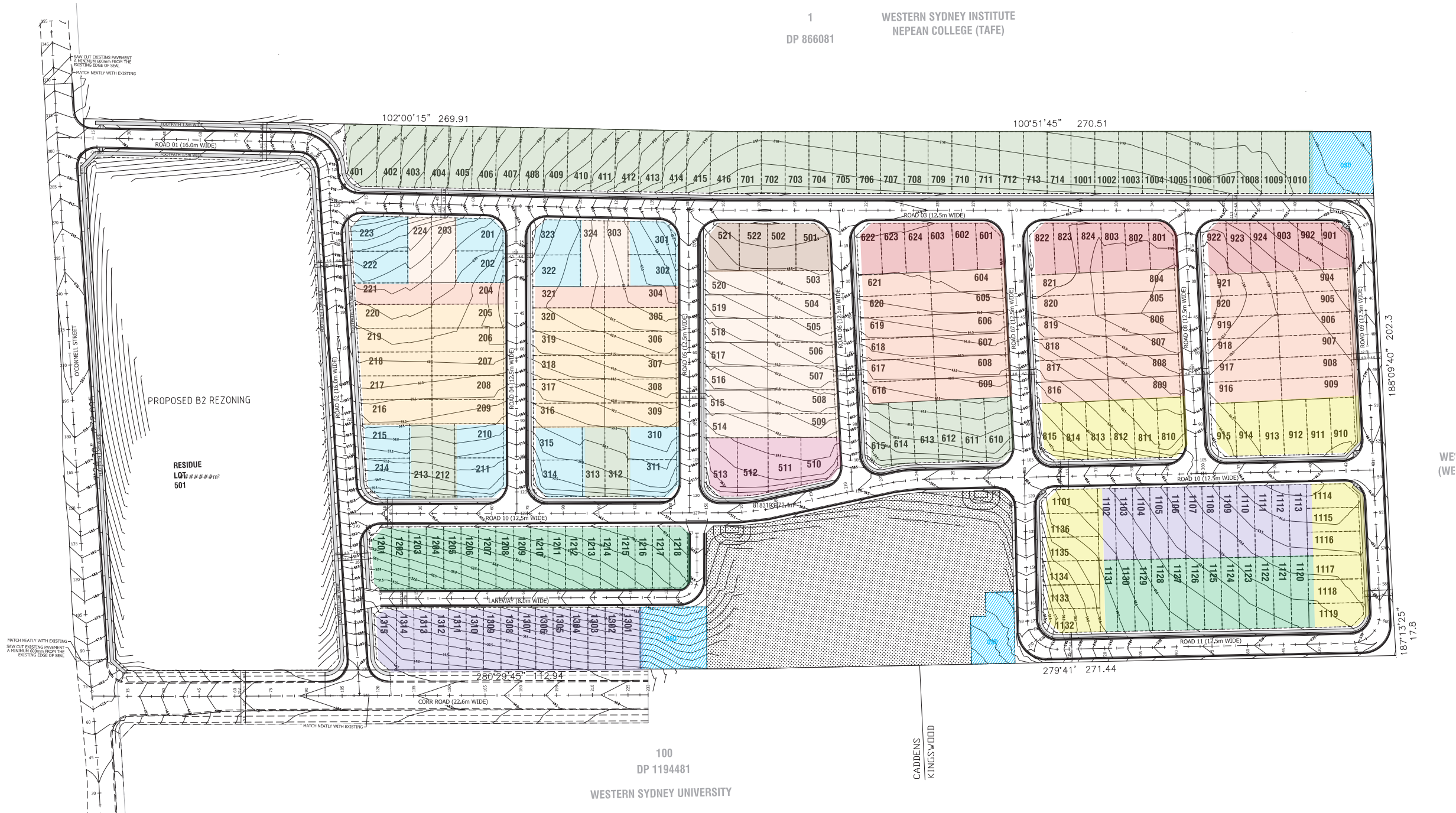
# 1 | OVERALL MASTERPLAN

46-66 O'CONNELL STREET | CADDENS

3  
page

1  
DP 866081

WESTERN SYDNEY INSTITUTE  
NEPEAN COLLEGE (TAFE)



MASTERPLAN LAYOUT  
masterplan 1:2000 & unit blocks 1:200 - sizes in metre  
Rev A

BEP & MASTERPLAN for 46-66 O'CONNELL STREET | CADDENS  
Prepared by PBD | ARCHITECTS + Project Managers  
Nominated Architect - Paul Buljevic - No. 7768  
Tailored for HYG on 07 MAY 2020





**GENERAL NOTES:**

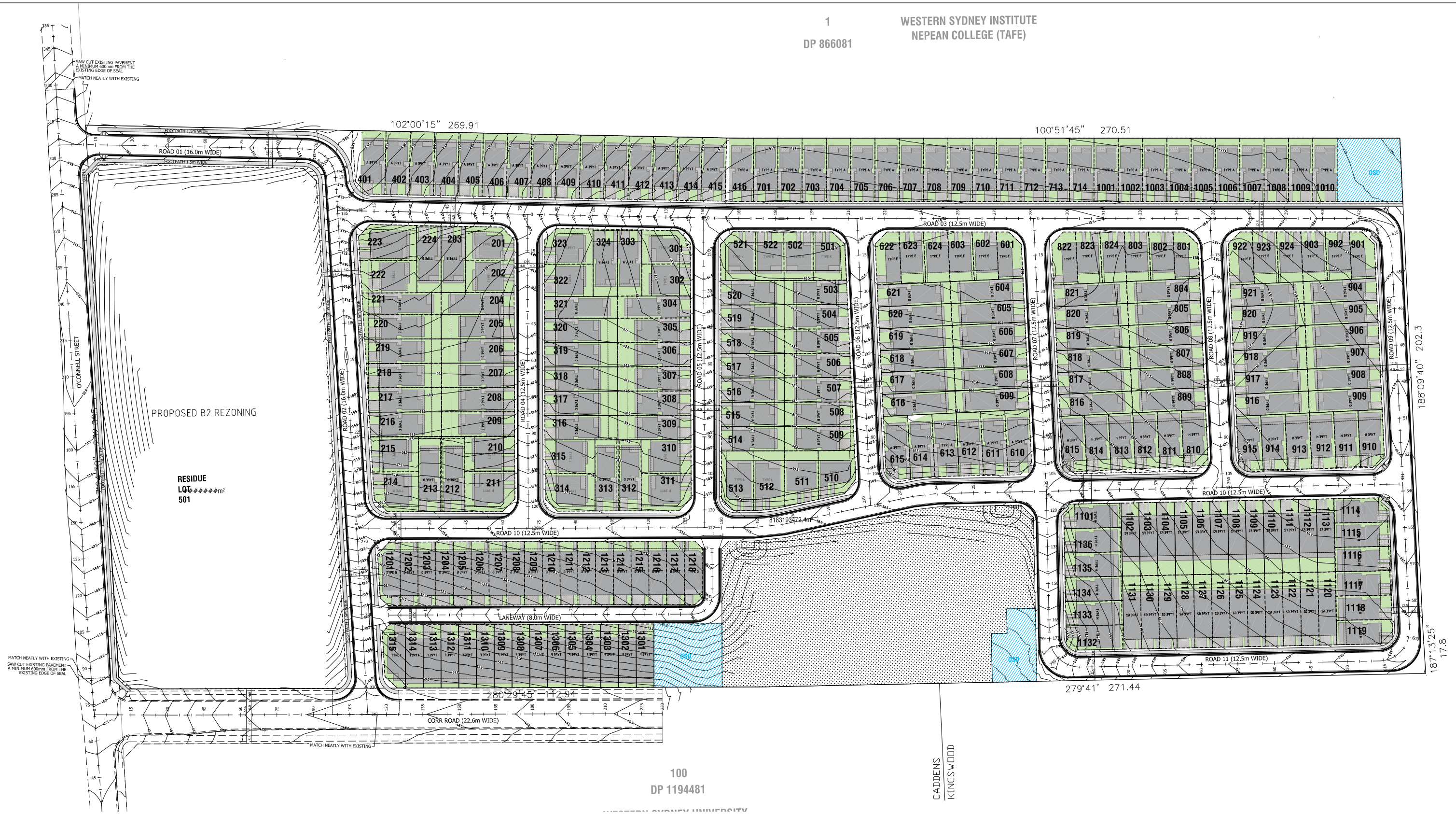
- ALL WORKS TO COMPLY WITH BUILDING CODE OF AUSTRALIA, REQUIREMENTS OF RELEVANT STATUTORY AUTHORITIES/ LOCAL GOVERNMENT & RELEVANT AUSTRALIAN BUILDING STANDARDS
- DRAWINGS FOR THE PURPOSES OF DA ONLY. FURTHER CONSULTANT/ AUTHORITY COORDINATION WILL BE REQUIRED AT CC STAGE WHICH MAY IMPACT ON DESIGN AND PLANNING LAYOUTS
- ARCHITECTURAL PLANS TO BE READ IN CONJUNCTION WITH CONSULTANT'S DRAWINGS, SPECIFICATIONS & REPORTS
- COPYRIGHT OF DESIGN SHOWN HEREON IS RETAINED BY PBD ARCHITECTS AND AUTHORITY IS REQUIRED FOR ANY REPRODUCTION
- AREA SCHEDULES SUPPLIED ARE APPROXIMATE ONLY. FUTURE ALLOWANCE FOR VERTICAL SERVICE DUCTS, STRUCTURAL WALL SYSTEMS AND CONSULTANT INPUT WILL BE REQUIRED

**LEGEND:**

- AW AWNING
- HW HIGHLIGHT WINDOW
- CU A/C CONDENSER UNITS
- FH FIRE HYDRANT
- FHR FIRE HOSE REEL
- FS FIRE STAIRS
- MV MECHANICAL RISER TO FUTURE DETAIL
- GC GARBAGE CHUTE
- MB MAILBOX TO FUTURE DETAIL
- PB PLANTERBOX
- R 240L RECYCLING BIN
- SK SKYLIGHT
- ST STORAGE
- WT HOT WATER UNITS

1  
DP 866081

WESTERN SYDNEY INSTITUTE  
NEPEAN COLLEGE (TAFE)



TYPICAL SECTION  
1:200 - sizes in mm  
Rev A

BEP & MASTERPLAN for 46-66 O'CONNELL STREET | CADDENS  
Prepared by PBD | ARCHITECTS + Project Managers  
Nominated Architect - Paul Buljevic - No. 7768  
Tailored for HYG on 07 MAY 2020





## 2 | INDICATIVE TYPICAL LAYOUT

46-66 O'CONNELL STREET | CADDENS

6  
page

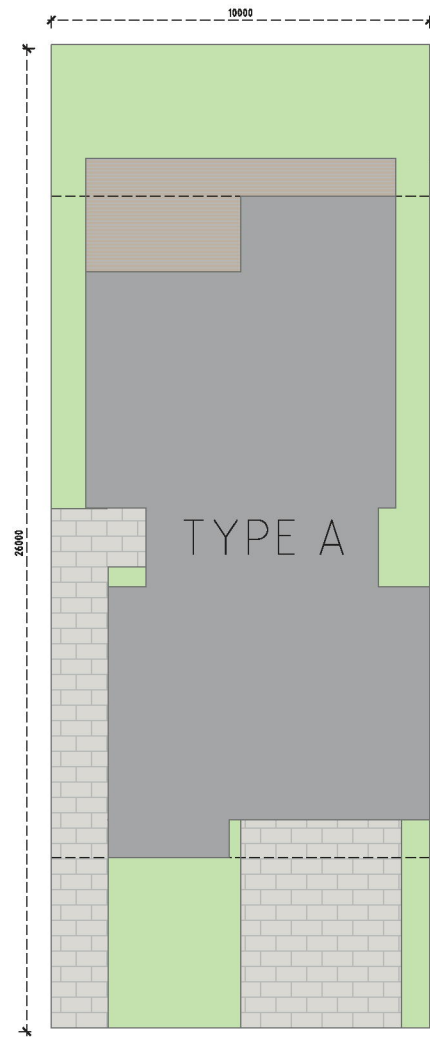




NORTH

10X26

CAR  
type a



Building envelope



Ground floor



Level one



TYPICAL LAYOUT A  
1:200 - sizes in mm  
Rev A

LOT AREA	=	260	M <sup>2</sup>
GFA	=	154	M <sup>2</sup>
LANDSCAPED AREA	=	132	M <sup>2</sup> 50%



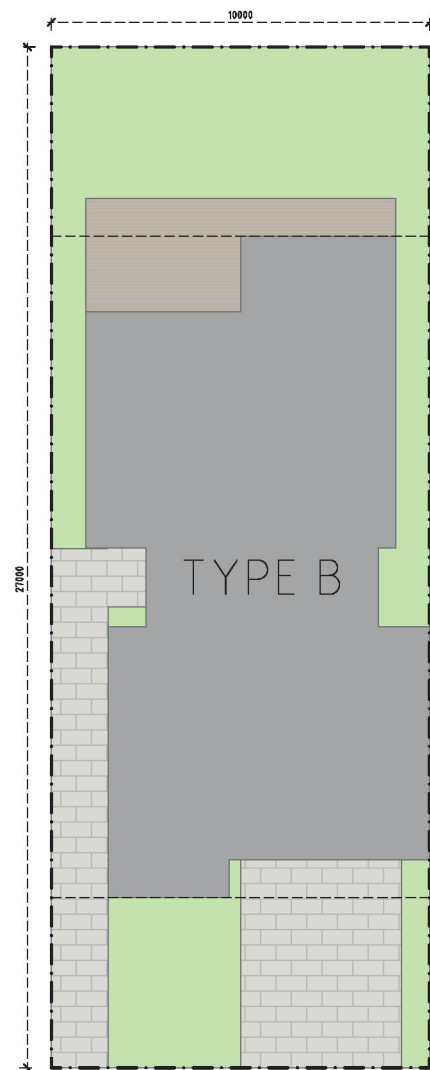




NORTH  
CAR

27X10

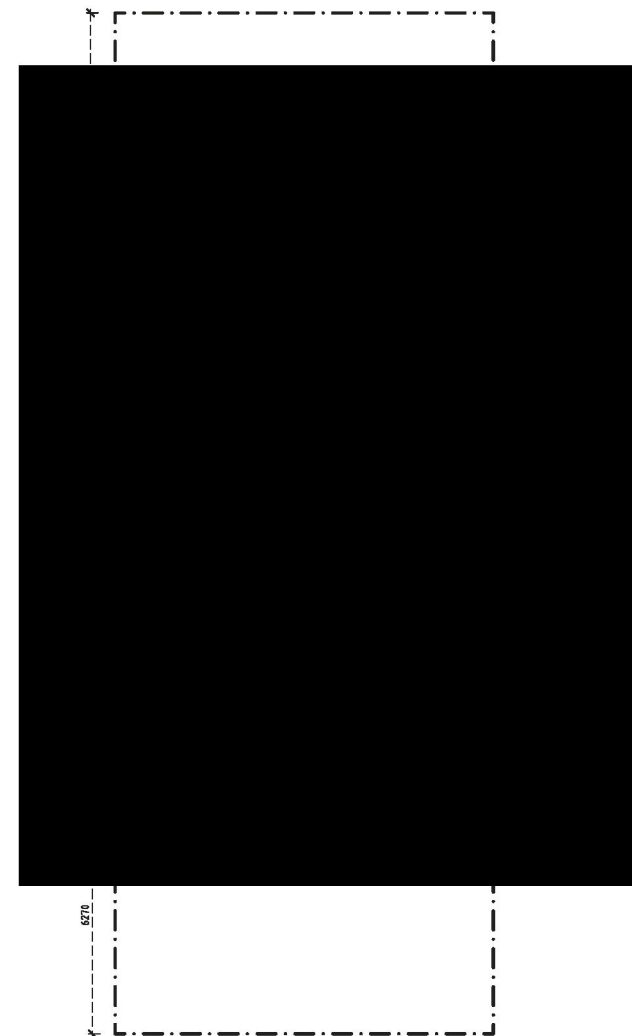
type b



Building envelope



Ground floor



Level one



TYPICAL LAYOUT B  
1:200 - sizes in mm  
Rev A

LOT AREA	=	270	M <sup>2</sup>
GFA	=	154	M <sup>2</sup>
LANDSCAPED AREA	=	142	M <sup>2</sup> 52%

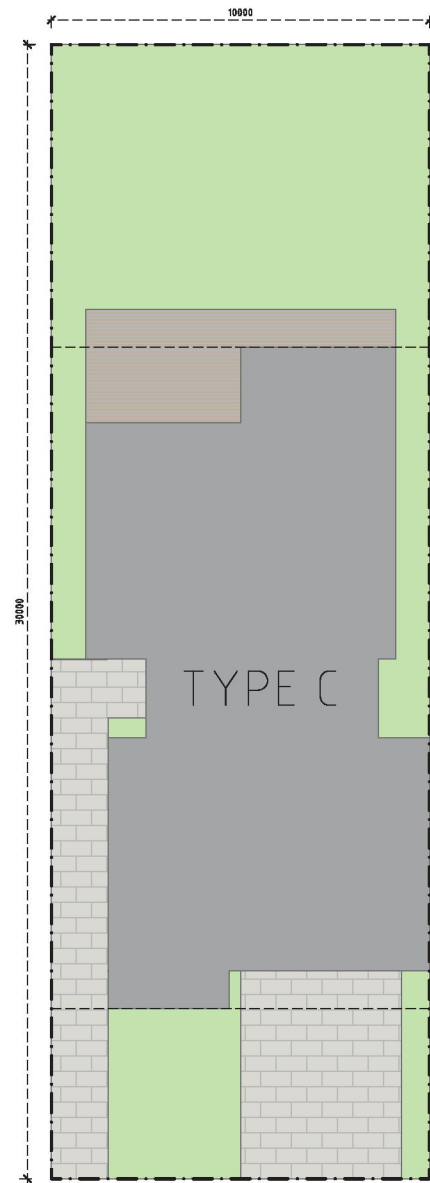
BEP & MASTERPLAN for 46-66 O'CONNELL STREET | CADDENS  
Prepared by PBD | ARCHITECTS + Project Managers  
Nominated Architect - Paul Buljevic - No. 7768  
Tailored for HYG on 07 MAY 2020



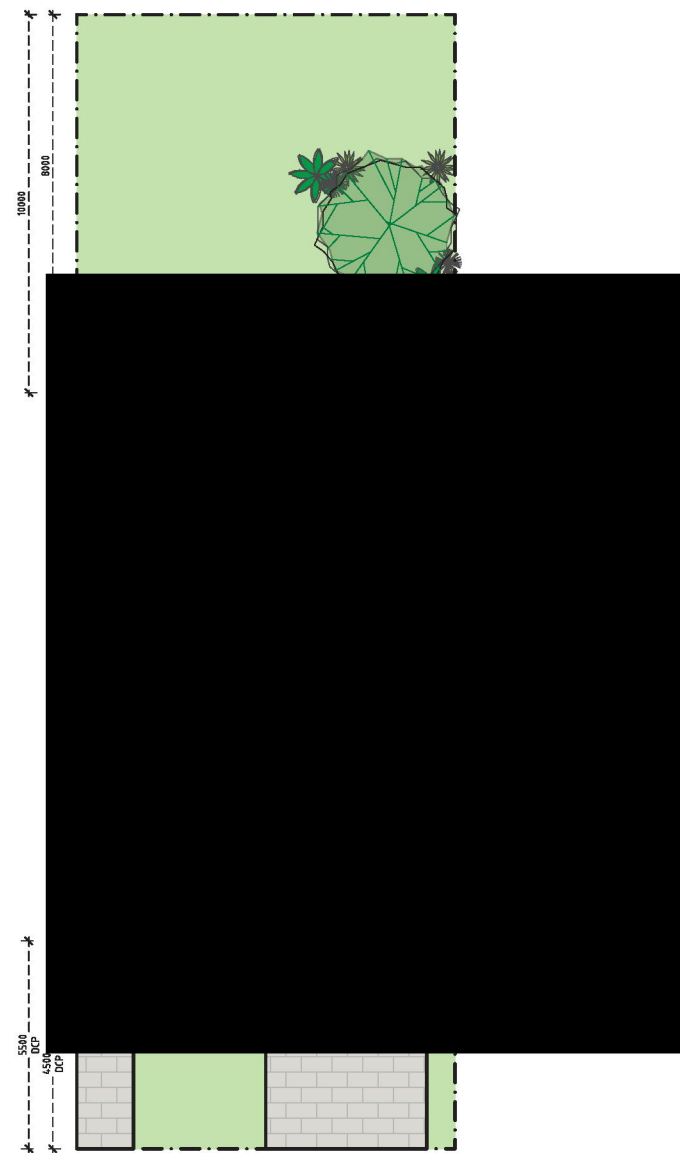




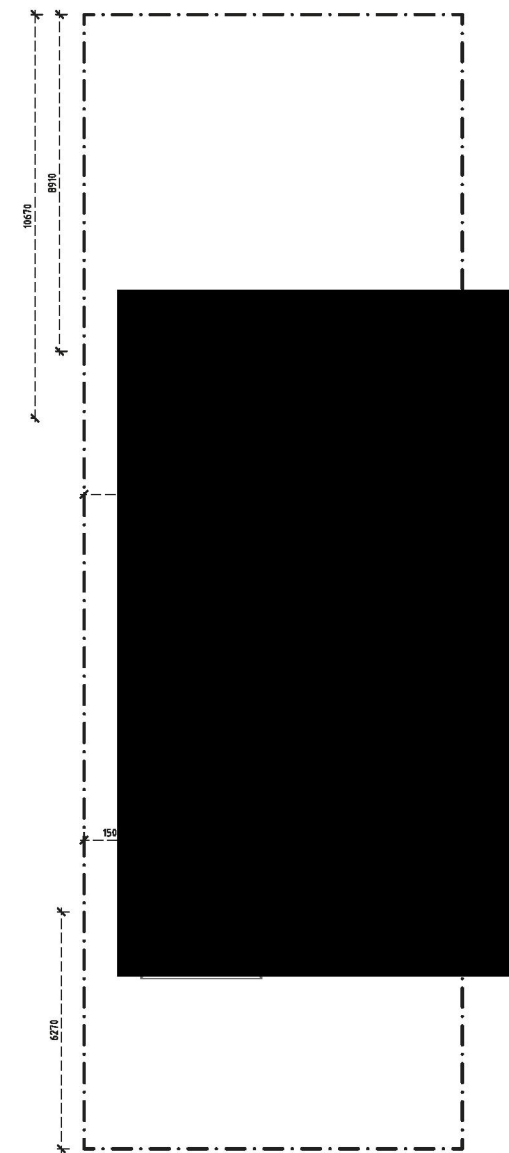
NORTH  
 CAR> 30X10  
 type c



Building envelope



Ground floor



Level one

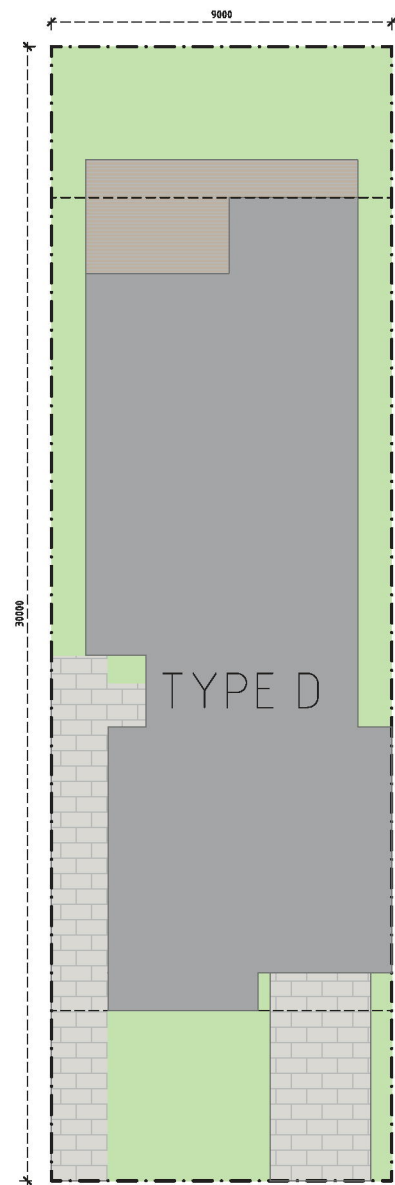
LOT AREA	=	300	M <sup>2</sup>
GFA	=	154	M <sup>2</sup>
LANDSCAPED AREA	=	172	M <sup>2</sup> 57%



NORTH

30X9

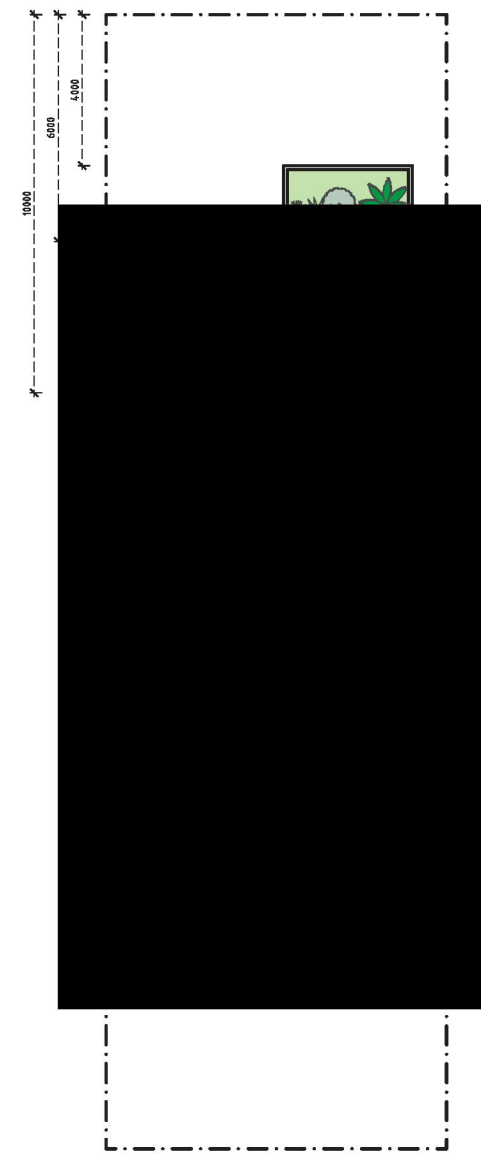
CAR  
type d



Building envelope



Ground floor



Level one



TYPICAL LAYOUT D  
1:200 - sizes in mm  
Rev A

LOT AREA	=	270	M <sup>2</sup>
GFA	=	182	M <sup>2</sup>
LANDSCAPED AREA	=	127	M <sup>2</sup> 47%

BEP & MASTERPLAN for 46-66 O'CONNELL STREET | CADDENS  
Prepared by PBD | ARCHITECTS + Project Managers  
Nominated Architect - Paul Buljevic - No. 7768  
Tailored for HYG on 07 MAY 2020



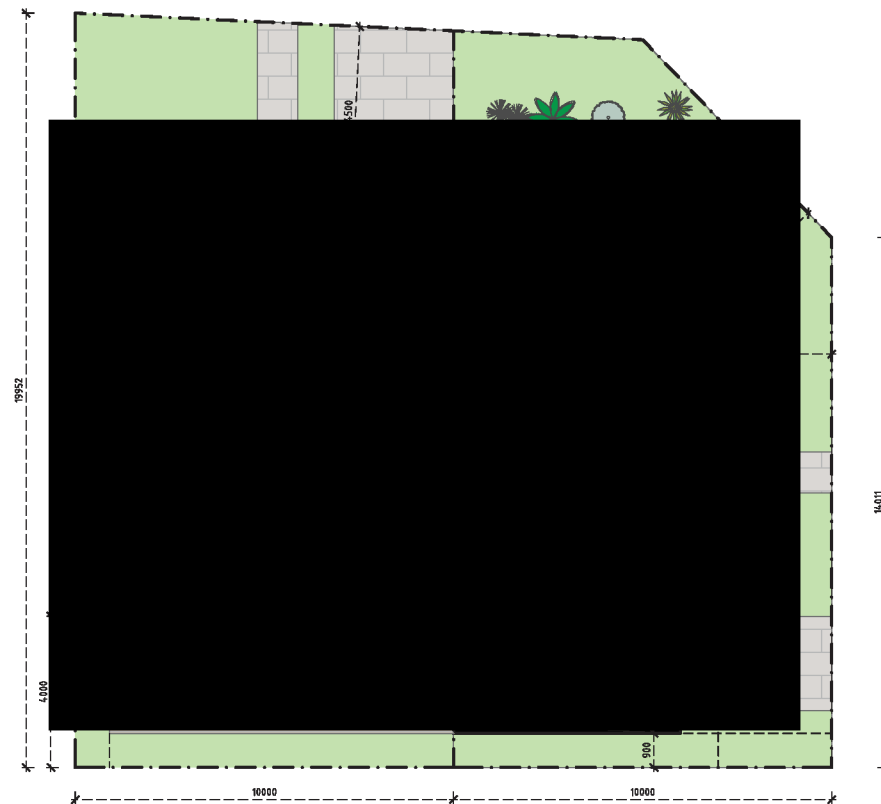




NORTH CAR 10X20 CORNER type e	NORTH CAR 10X20 type e2	NORTH CAR 12X20 type e3	NORTH CAR 13X20 type e4	NORTH CAR > 20X14 type e5
---	----------------------------------	----------------------------------	----------------------------------	---------------------------------

Type E2

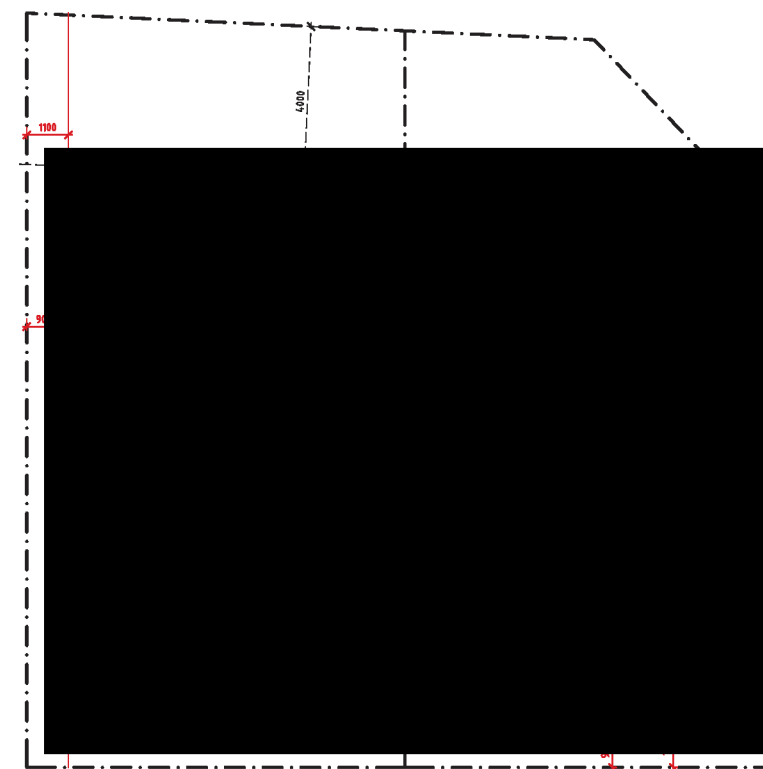
Type E1



Ground floor

Type E2

Type E1



Level one

TYPE E1

LOT AREA	=	180	M <sup>2</sup>
GFA	=	144	M <sup>2</sup>
LANDSCAPED AREA	=	91	M <sup>2</sup>

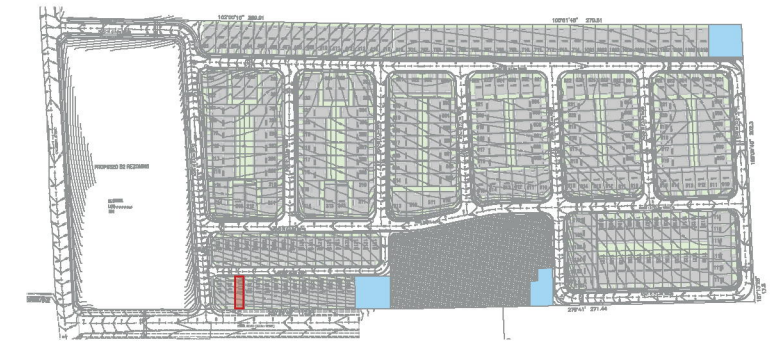
TYPE E2

LOT AREA	=	197	M <sup>2</sup>
GFA	=	126	M <sup>2</sup>
LANDSCAPED AREA	=	99	M <sup>2</sup>



TYPICAL LAYOUT E  
1:200 - sizes in mm  
Rev A

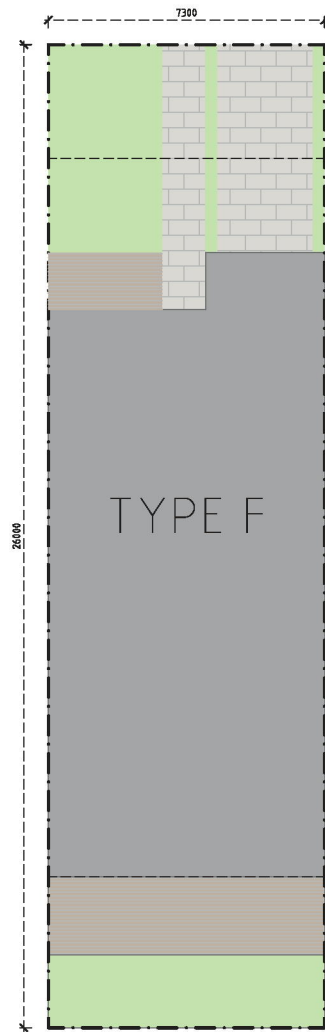




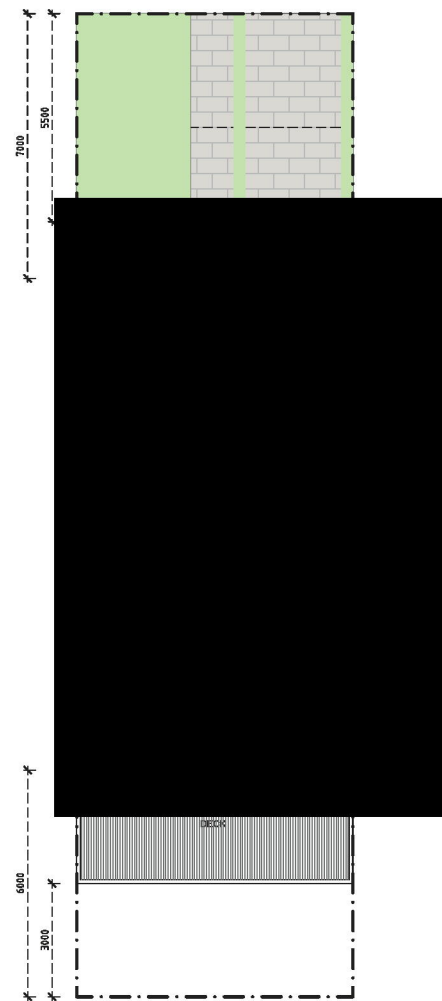
NORTH  
CAR

7.3X26

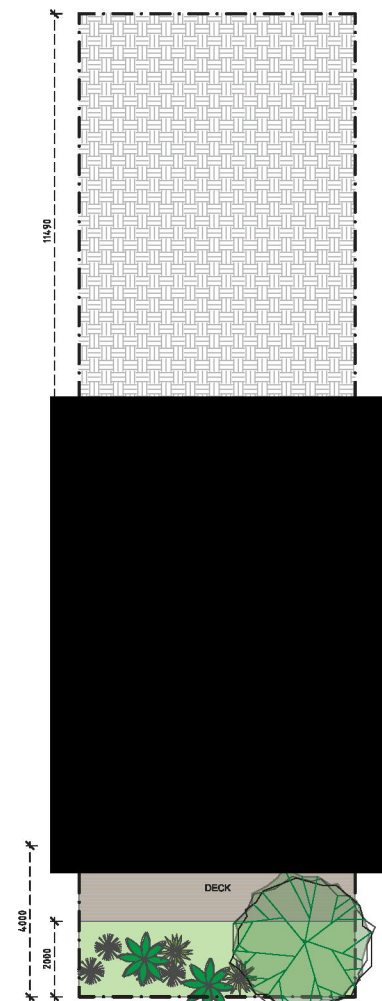
type f1



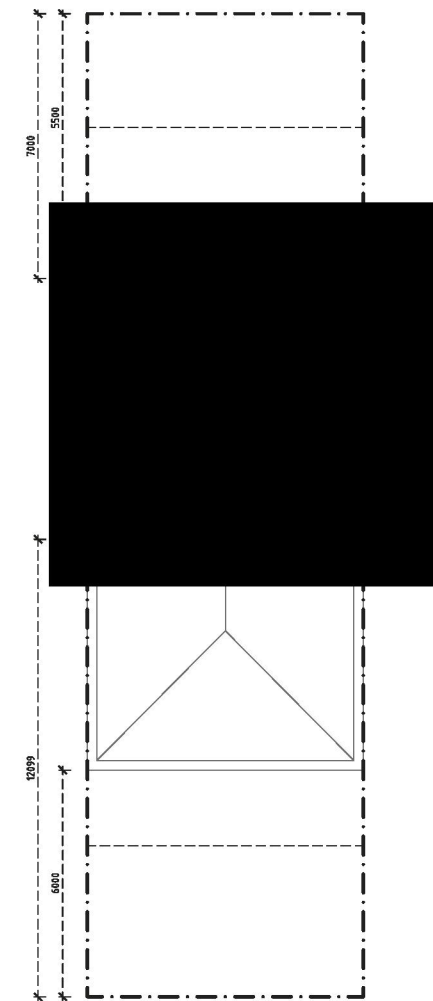
Building envelope



Ground floor



Lower Ground



Level one



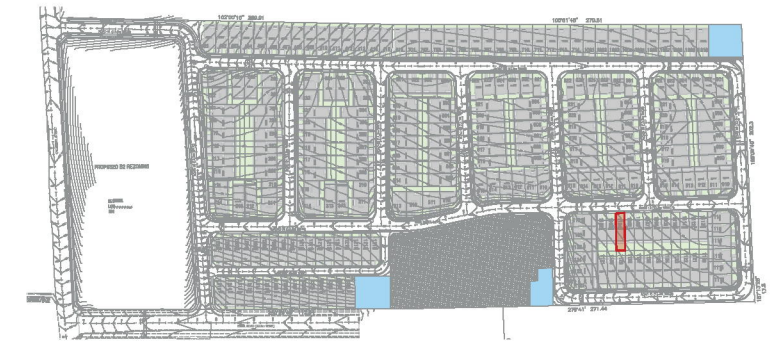
TYPICAL LAYOUT F1  
1:200 - sizes in mm  
Rev A

LOT AREA	=	190	M <sup>2</sup>
GFA	=	173	M <sup>2</sup>
LANDSCAPED AREA	=	75	M <sup>2</sup> 39%

BEP & MASTERPLAN for 46-66 O'CONNELL STREET | CADDENS  
Prepared by PBD | ARCHITECTS + Project Managers  
Nominated Architect - Paul Buljevic - No. 7768  
Tailored for HYG on 07 MAY 2020



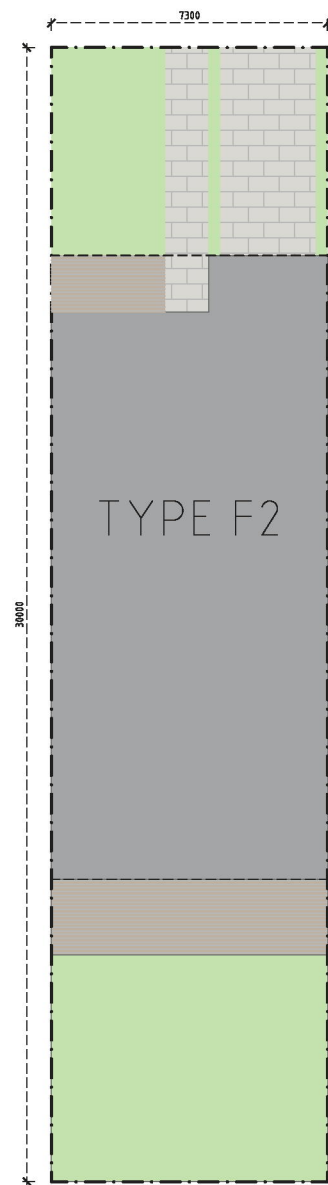




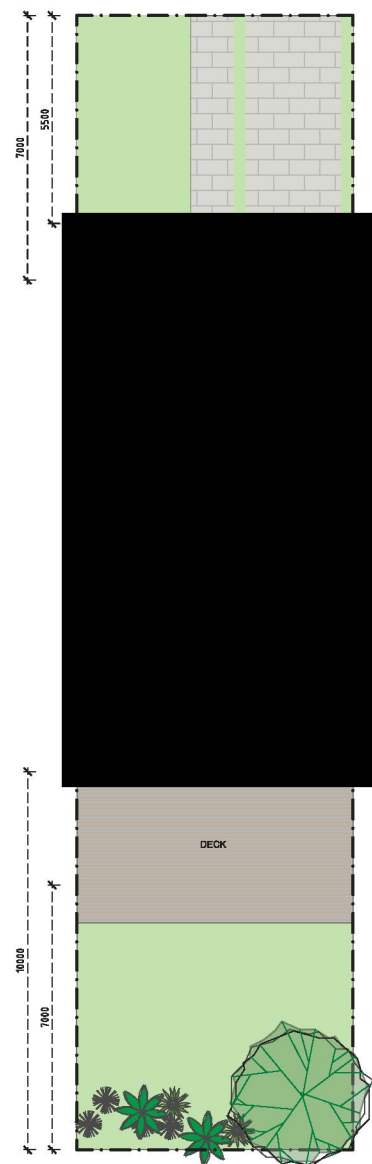
NORTH  
CAR

7.3X30

type f2



Building envelope



Ground floor



Level one



TYPICAL LAYOUT F2  
1:200 - sizes in mm  
Rev A

LOT AREA	=	219	M <sup>2</sup>
GFA	=	165	M <sup>2</sup>
LANDSCAPED AREA	=	105	M <sup>2</sup> 47%

BEP & MASTERPLAN for 46-66 O'CONNELL STREET | CADDENS  
Prepared by PBD | ARCHITECTS + Project Managers  
Nominated Architect - Paul Buljevic - No. 7768  
Tailored for HYG on 07 MAY 2020

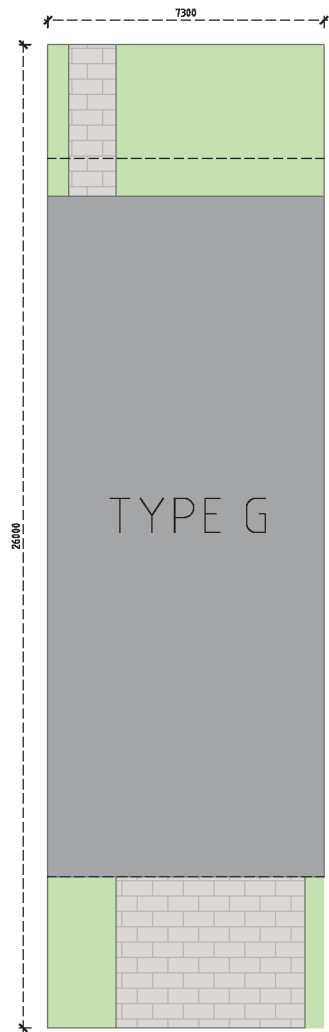




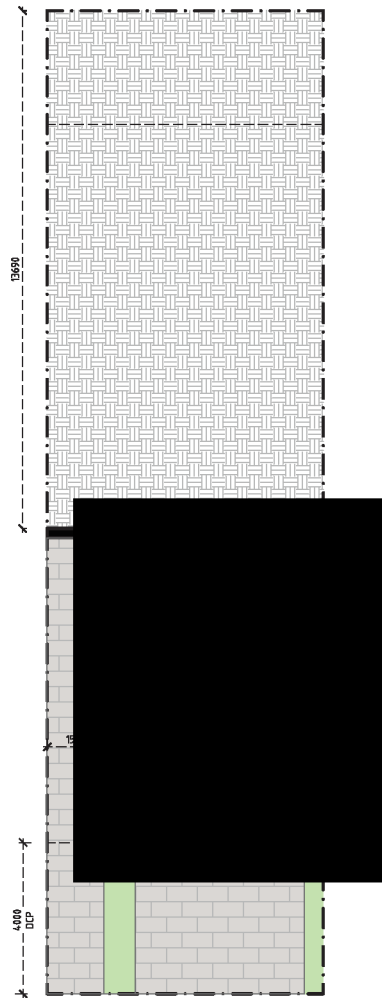
NORTH

7.3X26

CAR  
type g1



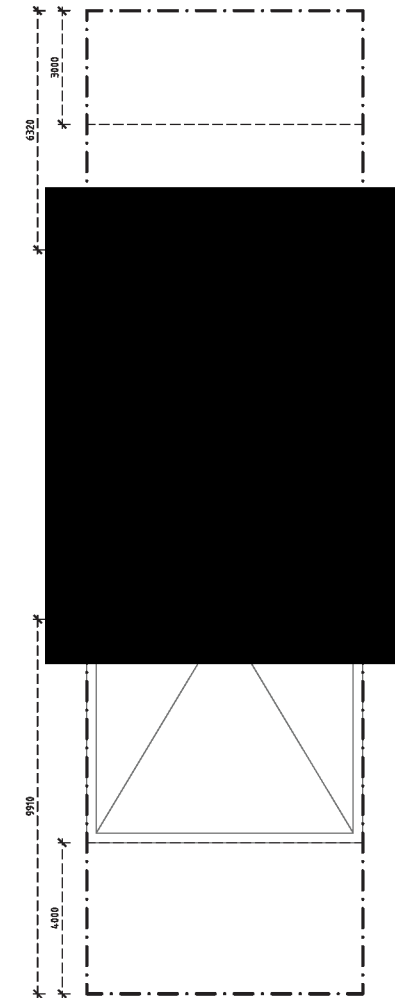
Building envelope



Lower Ground



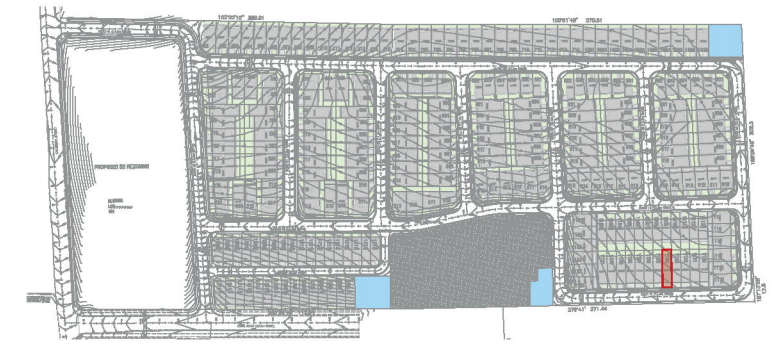
Ground floor



Level one



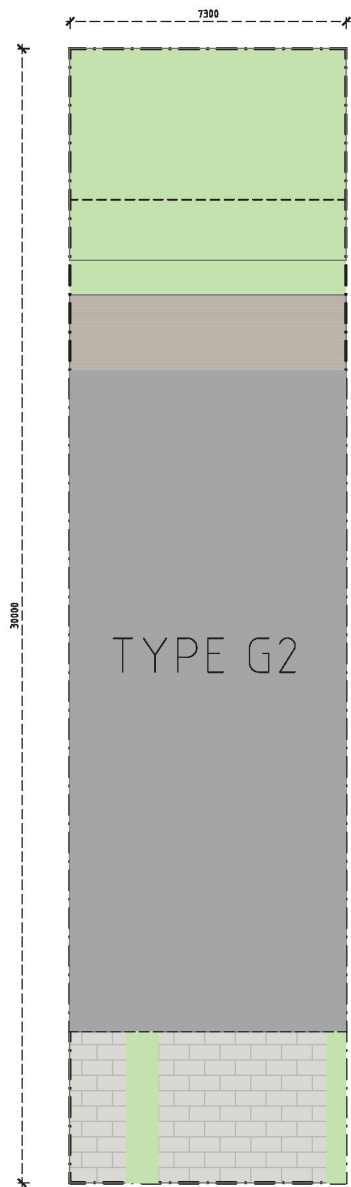




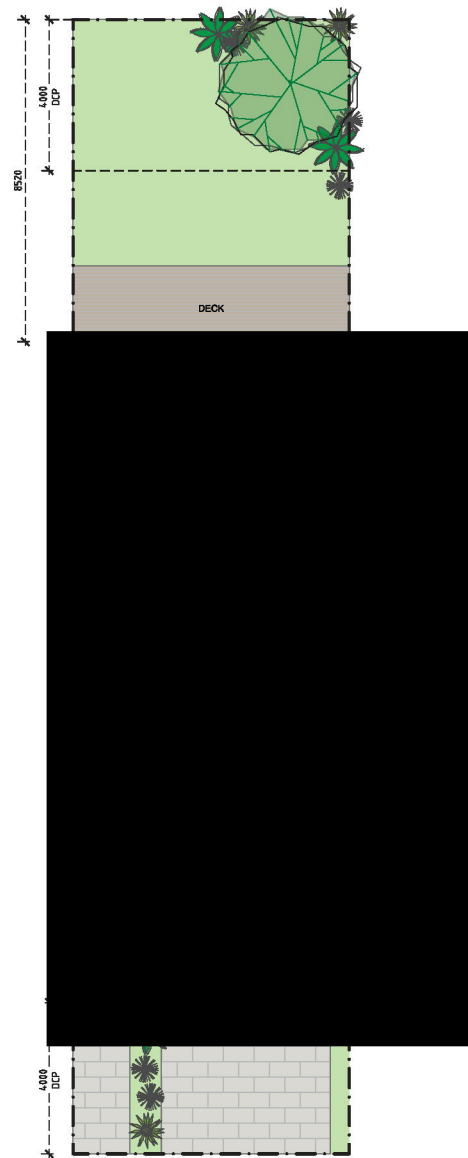
NORTH

7.3X30

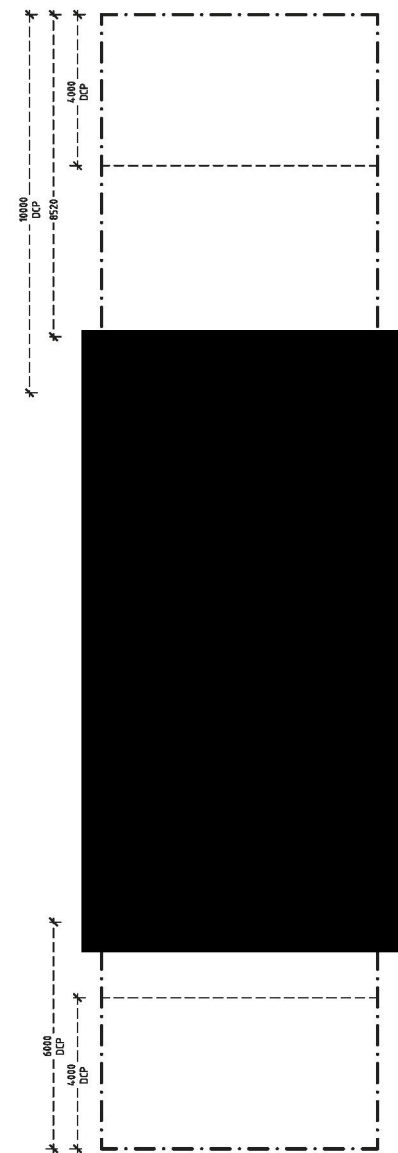
CAR  
type g2



Building envelope



Ground floor

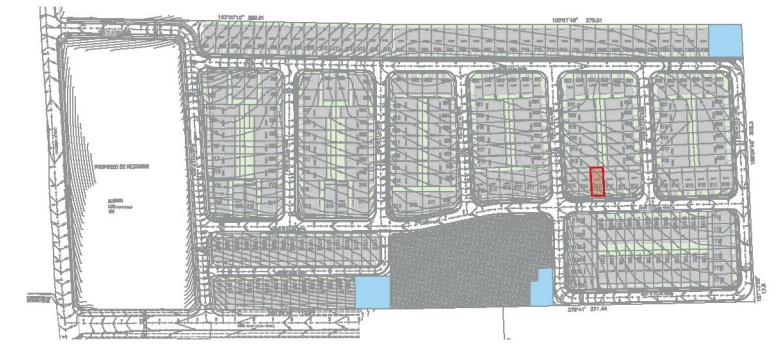


Level one



LOT AREA	=	219	M <sup>2</sup>
GFA	=	157	M <sup>2</sup>
LANDSCAPED AREA	=	105	M <sup>2</sup> 47%

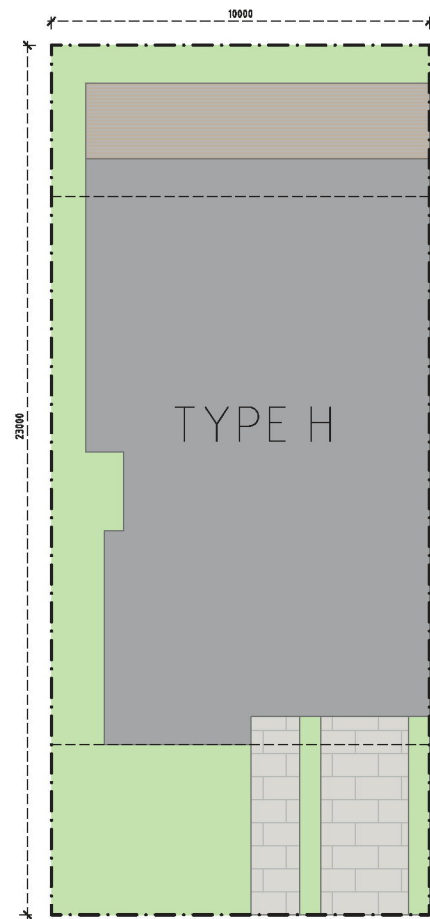




NORTH

10X23

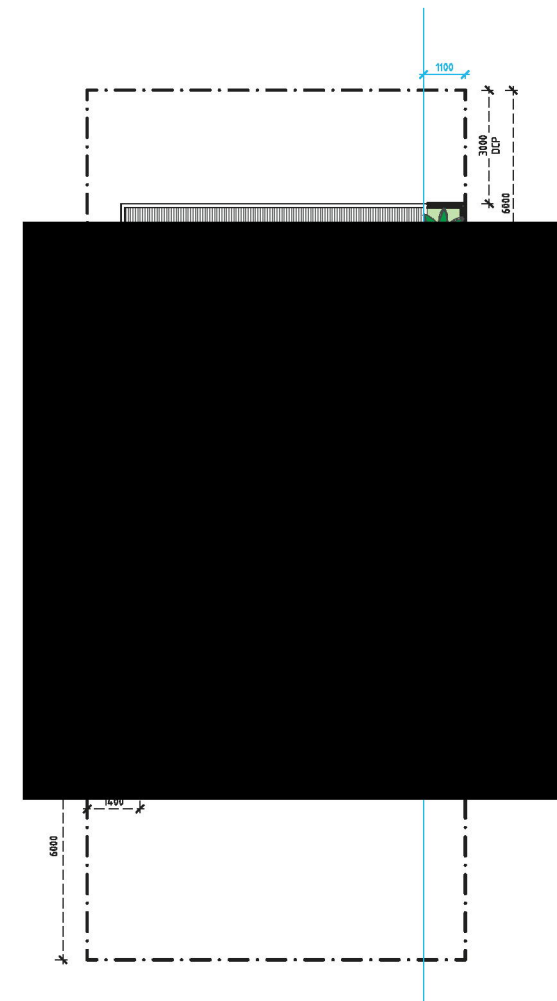
CAR  
type h



Building envelope



Ground floor



Level one

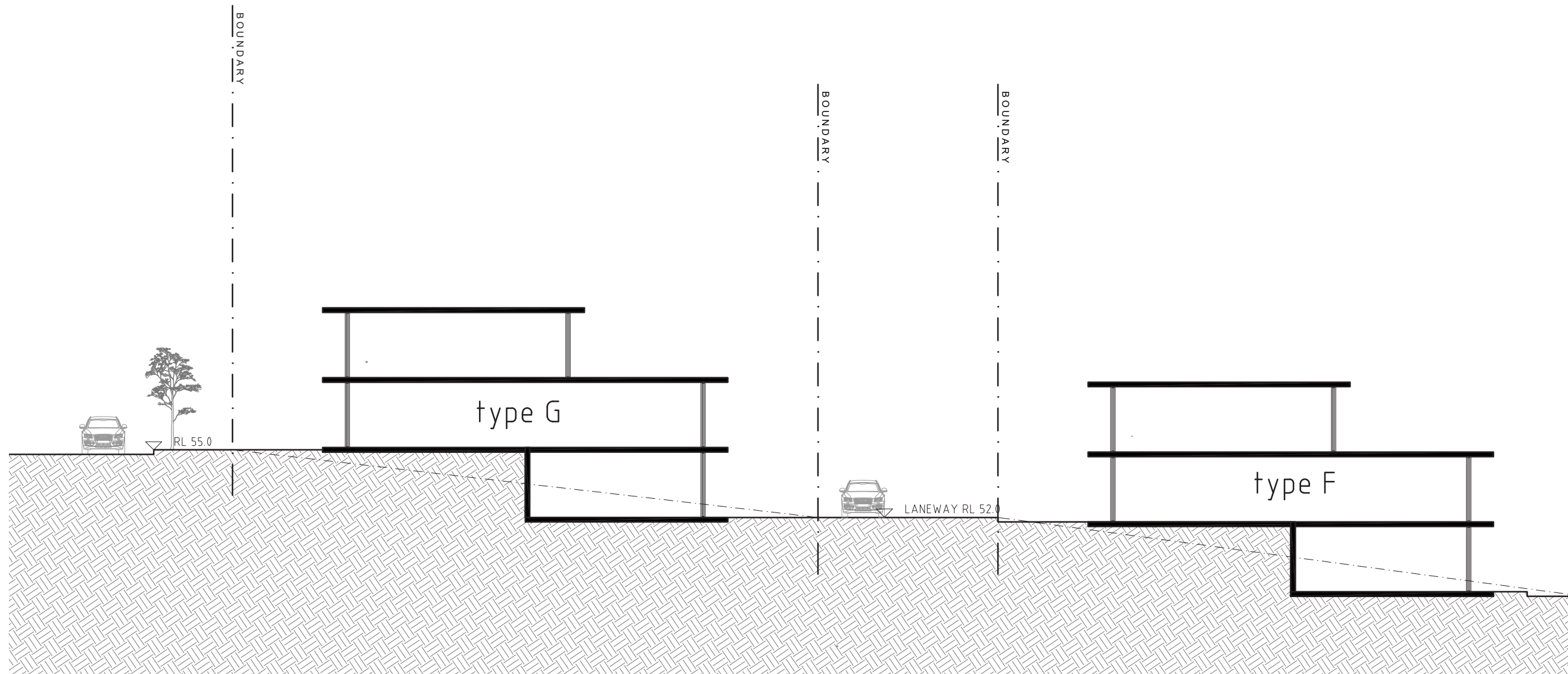


TYPICAL LAYOUT H  
1:200 - sizes in mm  
Rev A

LOT AREA	=	230	M <sup>2</sup>
GFA	=	168	M <sup>2</sup>
LANDSCAPED AREA	=	97	M <sup>2</sup> 42%







# PBD | ARCHITECTS

---

Level 2 / 52 Albion Street  
Surry Hills NSW 2010  
Australia

+61 2 9698 8140  
info@pbdarchitects.com.au  
pbdarchitects.com.au

PBD Architects & Project managers Pty Ltd  
ABN 36 147 035 550

Paul Buljevic ARB #7768