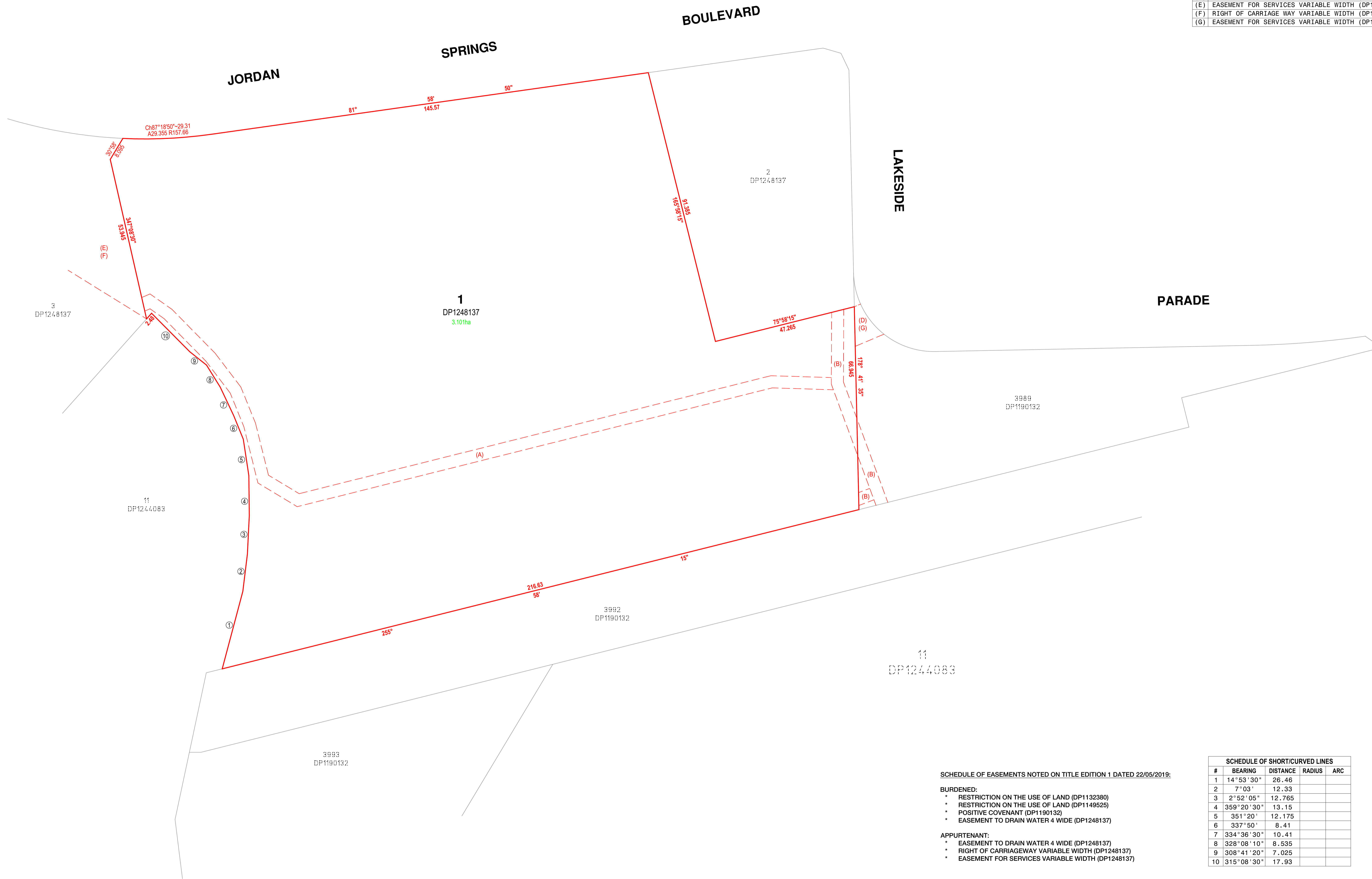


MGA

EASEMENTS	
(A)	EASEMENT TO DRAIN WATER 4 WIDE (DP1248137)
(B)	EASEMENT TO DRAIN WATER 4 WIDE (DP1248137)
(D)	RIGHT OF CARRIAGE WAY VARIABLE WIDTH (DP1248137)
(E)	EASEMENT FOR SERVICES VARIABLE WIDTH (DP1248137)
(F)	RIGHT OF CARRIAGE WAY VARIABLE WIDTH (DP1248137)
(G)	EASEMENT FOR SERVICES VARIABLE WIDTH (DP1248137)

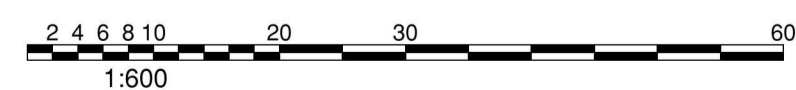


SCHEDULE OF SHORTCURVED LINES				
#	BEARING	DISTANCE	RADIUS	ARC
1	14°53'30"	26.46		
2	7°03'	12.33		
3	2°52'05"	12.765		
4	359°20'30"	13.15		
5	351°20'	12.175		
6	337°50'	8.41		
7	334°36'30"	10.41		
8	328°08'10"	8.535		
9	308°41'20"	7.025		
10	315°08'30"	17.93		

SCHEDULE OF EASEMENTS NOTED ON TITLE EDITION 1 DATED 22/05/2019:

- BURDENED:**
- \* RESTRICTION ON THE USE OF LAND (DP1132380)
  - \* RESTRICTION ON THE USE OF LAND (DP1149525)
  - \* POSITIVE COVENANT (DP1190132)
  - \* EASEMENT TO DRAIN WATER 4 WIDE (DP1248137)

- APPURTENANT:**
- \* EASEMENT TO DRAIN WATER 4 WIDE (DP1248137)
  - \* RIGHT OF CARRIAGEWAY VARIABLE WIDTH (DP1248137)
  - \* EASEMENT FOR SERVICES VARIABLE WIDTH (DP1248137)



ISSUE	DATE	AMENDMENT	SURV/CHK	ISSUE	DATE	AMENDMENT	SURV/CHK
A	03/06/19	ORIGINAL ISSUE	MT				

CLIENT:  
**LENLEASE RL JORDAN SPRINGS HOLDING PTY LTD**

ORIGIN OF LEVELS: **N/A**  
 ORIGIN OF COORDINATES: **N/A**  
 DATUM: **N/A**

SCALE: **1:600**  
 REF: **7202**  
 DATE: **03/06/19**  
 SURV/CHK: **MT**  
 SHEET **1** OF **1** SHEETS

PLAN **A1**  
**LOT DETAIL PLAN**  
 JORDAN SPRINGS BOULEVARD  
 JORDAN SPRINGS

**©COPYRIGHT**  
 This plan is not to be used for any purpose other than its original intention and remains the property of SDG. This plan cannot be reproduced, copied or digitally transferred (in whole or part) without prior written permission of SDG.

**SDG**  
 LAND DEVELOPMENT SOLUTIONS  
 Suite 13 Railway Street  
 BALAKHAM HILLS 2153  
 P.O. Box 2573  
 NORTH PARRAMATTA 1750  
 T: (02) 9630 7955  
 e: office@sdg.net.au  
 w: www.sdg.net.au