

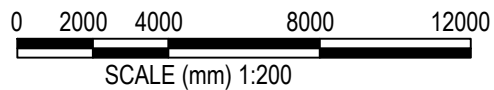
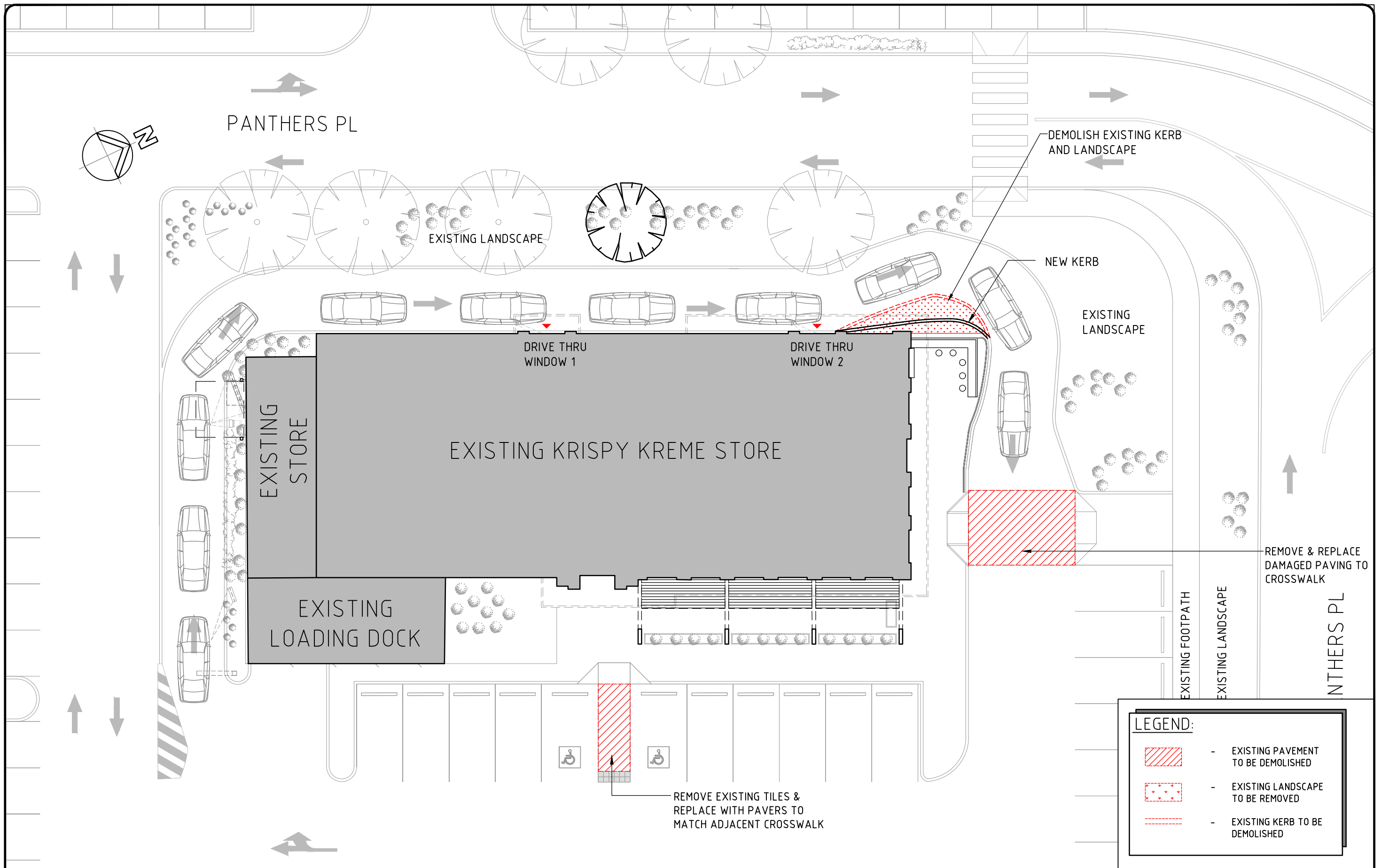
DRAWING LIST

CIVIL DRAWING LIST

- B101 A PAVEMENT DEMOLITION PLAN
- B101 A PAVEMENT DETAILS
- B110 A EROSION & SEDIMENT CONTROL PLAN
- A007 A EROSION & SEDIMENT CONTROL PLAN

No.	AMENDMENT	DATE	CHK	INT	CONSULTANT:	JOB No: 210181		DATE: JULY 2021	DRAWING:
A	DA ISSUE	14.02.22	NB	NL	Richmond+Ross PTY LIMITED CONSULTING ENGINEERS AND PROJECT LEADERS ABN 34 001 485 436 38 WILLOUGHBY ROAD, CROWS NEST, NSW 2065 TEL : (02) 9490 9600 FAX : (02) 9438 1224		PROJECT: PROPOSED ALTERATIONS TO EX. 'KRISPY KREME' PENRITH ,NSW, 2750	SCALE: NTS	CIVIL
								DWG No: B000 REV. A	DRAWING LIST

THIS IS A COMPUTER GENERATED DRAWING.
DO NOT AMEND BY HAND. DO NOT SCALE OFF DRAWING.



THIS IS A COMPUTER GENERATED DRAWING.
DO NOT AMEND BY HAND. DO NOT SCALE OFF DRAWING.

No.	AMENDMENT	DATE	CHK	INT
A	DA ISSUE	14.02.22	NB	NL

CONSULTANT: **Richmond+Ross** PTY LIMITED
 CONSULTING ENGINEERS AND PROJECT LEADERS
 ABN 34 001 485 436
 38 WILLOUGHBY ROAD, CROWS NEST, NSW 2065
 TEL : (02) 9490 9600 FAX : (02) 9438 1224

JOB No: 210181



PROJECT:
PROPOSED ALTERATIONS TO EX.
'KRISPY KREME'
PENRITH ,NSW, 2750

DA ISSUE

DATE: JULY 2021

SCALE: 1:200@A3

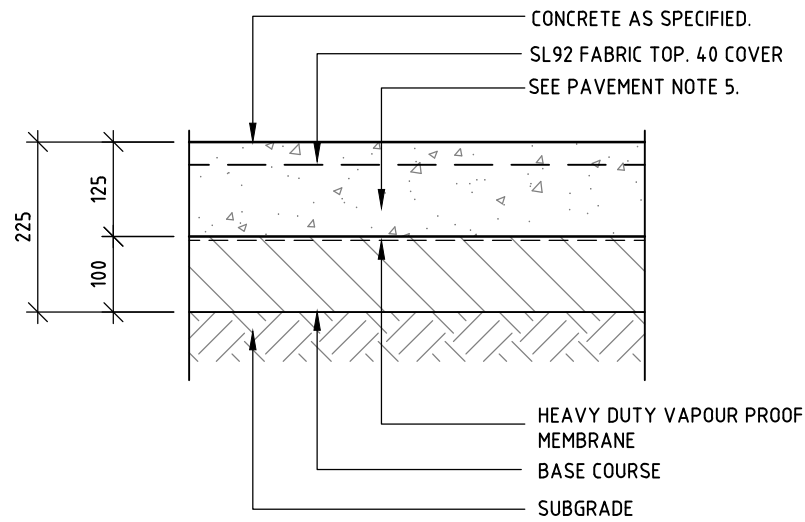
DWG No:

B101
REV. A

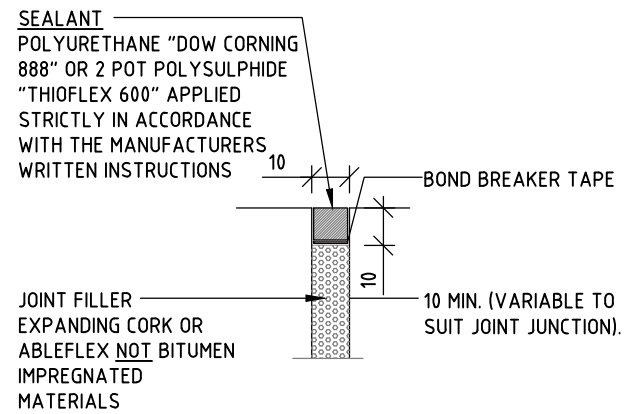
DRAWING:
PAVEMENT
DEMOLITION PLAN

PAVEMENT NOTES

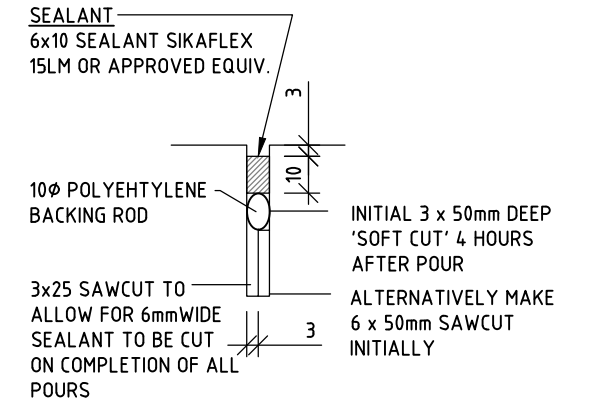
- PAVEMENT DETAILS HAVE BEEN DESIGNED ASSUMING A SUBGRADE WITH A MINIMUM SOAKED CBR OF 3% (SEE NOTE 4). PAVEMENT DETAILS SHALL BE READ IN CONJUNCTION WITH TABLE 1.
- BASE COURSE SHALL BE COMPACTED TO 98% MODIFIED MAXIMUM DRY DENSITY AT A MOISTURE CONTENT WITHIN 2% OF STANDARD OPTIMUM, MINIMUM SOAKED CBR 80% UNO.
- SUB BASE COURSE SHALL BE COMPACTED TO 95% MODIFIED MAXIMUM DRY DENSITY, MINIMUM SOAKED CBR 45% UNO.
- SUBGRADE SHALL BE APPROVED NATURAL SUBGRADE OR IMPORTED FILL. PROOFROLL AND COMPACTED TO 98% STANDARD MAXIMUM DRY DENSITY UNO
- MINIMUM CONCRETE STRENGTH FOR PAVEMENTS SHALL BE $F'c = 32 \text{ MPa}$ AT 28 DAYS AND $F90 \text{ FLEXURAL} = 4.0 \text{ MPa}$
- FILL MATERIALS WHICH ARE PRONE TO ACCELERATED WEATHERING WILL NOT BE ACCEPTED EG. SOME MUDSTONES, CLAYSTONES, SILTSTONES, SHALES AND OTHER ROCKS. ENDORSEMENT OF THE SUITABILITY OF THE PROPOSED FILLING MATERIAL IS TO BE MADE BY A GEOTECHNICAL ENGINEER PRIOR TO APPROVAL.
- DRIVE-THRU CONCRETE SLAB COVER TO FABRIC REINFORCING TO BE INCREASED TO 45mm COVER AT DETECTOR LOOP LOCATIONS. DETECTOR LOOP CONDUIT TO BE FIXED TO TOP OF FABRIC REINFORCING.
- NEW SLAB TO MATCH EXISTING SLAB TO SUITE PAVEMENT & EXISTING TILE IN LEVELS.



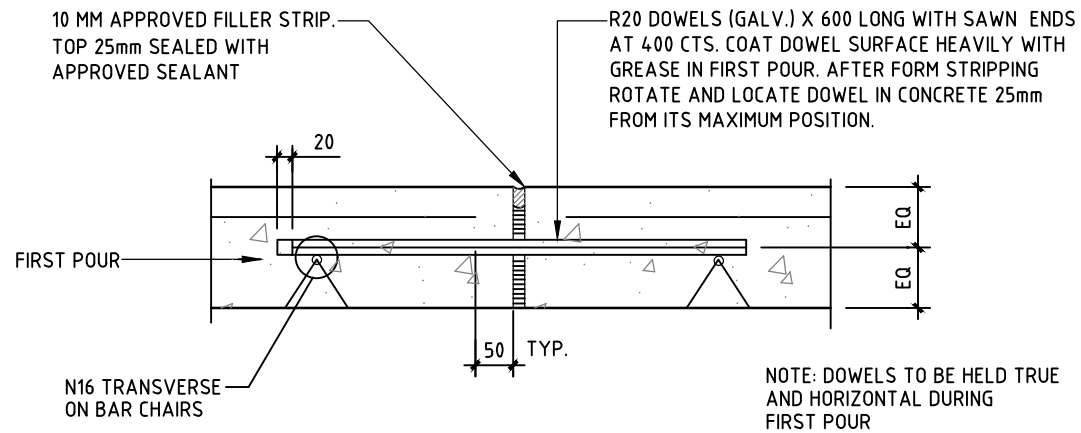
PAVEMENT DETAILS



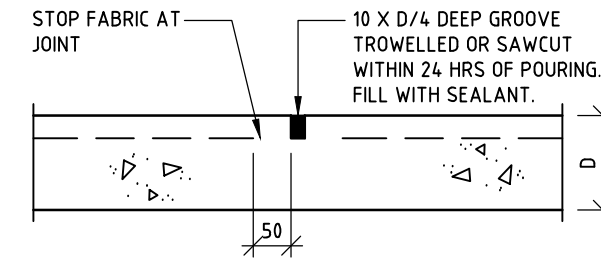
EXPANSION JOINT DETAIL



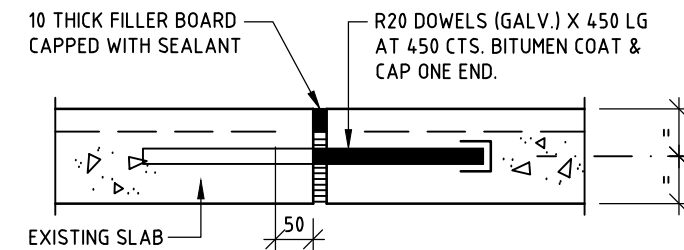
CONTROL JOINT SEAL



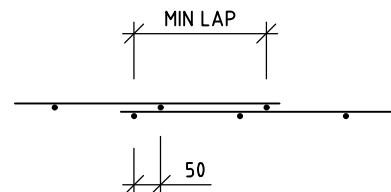
EXPANSION JOINT (EJ)



CONTROL JOINT (CJ)

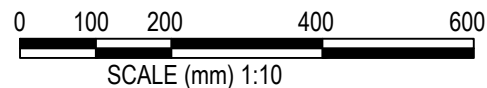


DOWEL JOINT (DJ)



FABRIC LAP DETAIL

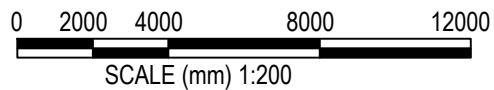
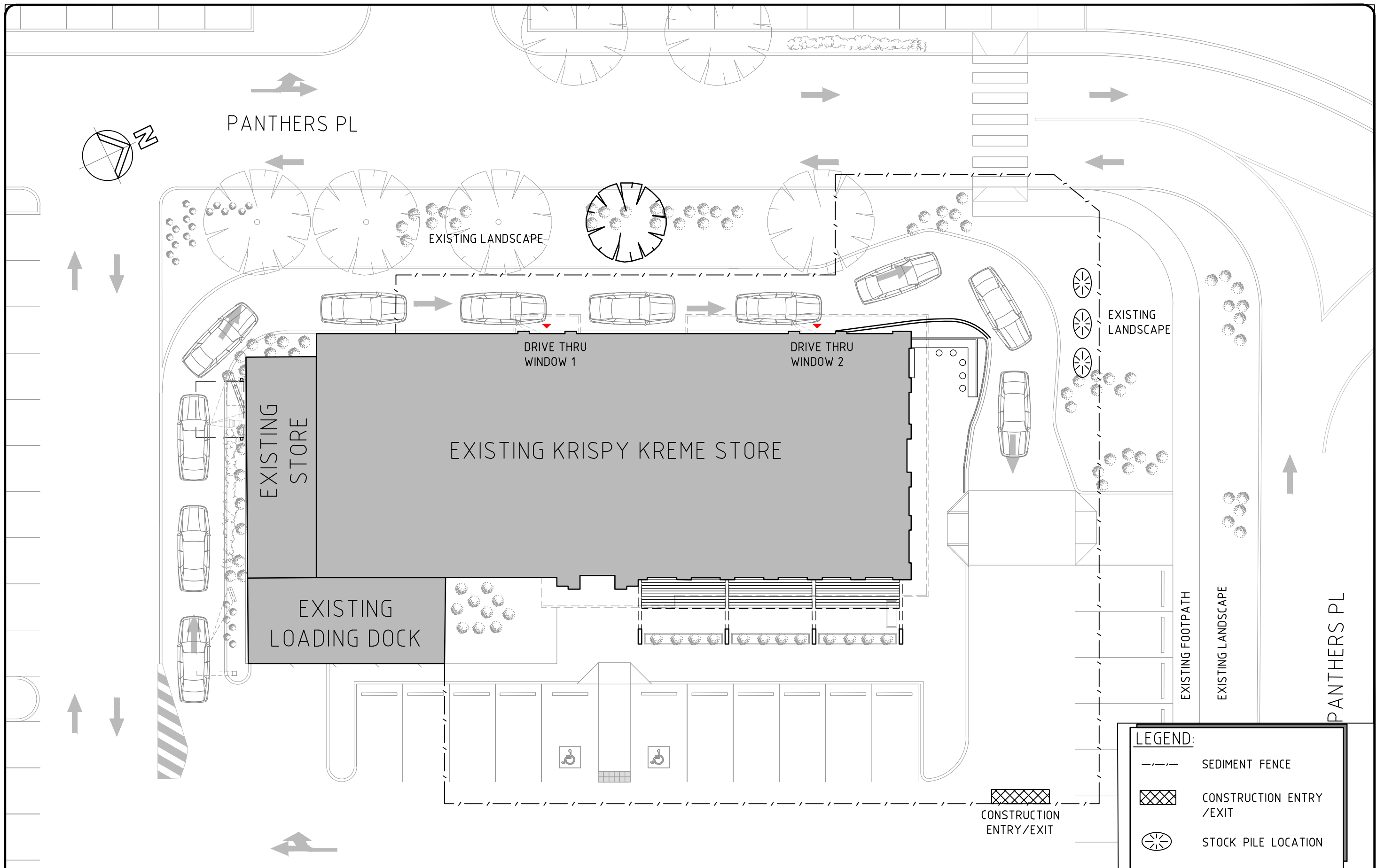
TABLE 1 - BASE COURSE SPECIFICATION					
	NSW	VIC	QLD	TAS	SA
RELEVANT SPEC	RMS SPEC 3051	VIC ROADS SECT 812	QLD MAIN ROADS MRTS05	D.R.T. PART R40	D.R.T. SPEC
BASE COURSE	DGB20	CLASS 2A F.C.R.	TYPE 1.1	BASE GRADE C	PM32
SUB BASE COURSE	DGS40	CLASS 3 F.C.R.	TYPE 2.3	SUB-BASE GRADE B	PM35



THIS IS A COMPUTER GENERATED DRAWING. DO NOT AMEND BY HAND. DO NOT SCALE OFF DRAWING.

No. A	AMENDMENT	DATE	CHK	INT	CONSULTANT: Richmond+Ross PTY LIMITED CONSULTING ENGINEERS AND PROJECT LEADERS ABN 34 001 485 436 38 WILLOUGHBY ROAD, CROWS NEST, NSW 2065 TEL : (02) 9490 9600 FAX : (02) 9438 1224	JOB No: 210181	PROJECT: PROPOSED ALTERATIONS TO EX. 'KRISPY KREME' PENRITH ,NSW, 2750	DATE: JULY 2021	DRAWING: PAVEMENT DETAILS
	DA ISSUE	14.02.22	NB	NL				SCALE: 1:10@A3	
DA ISSUE								DWG No: B102 REV. A	





THIS IS A COMPUTER GENERATED DRAWING.
DO NOT AMEND BY HAND. DO NOT SCALE OFF DRAWING.

No.	AMENDMENT	DATE	CHK	INT
A	DA ISSUE	14.02.22	NB	NL

CONSULTANT: **Richmond+Ross** PTY LIMITED
 CONSULTING ENGINEERS AND PROJECT LEADERS
 ABN 34 001 485 436
 38 WILLOUGHBY ROAD, CROWS NEST, NSW 2065
 TEL : (02) 9490 9600 FAX : (02) 9438 1224

JOB No: 210181



PROJECT:
PROPOSED ALTERATIONS TO EX.
'KRISPY KREME'
PENRITH ,NSW, 2750

DA ISSUE

DATE: JULY 2021

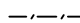
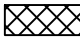

SCALE: 1:200@A3

DWG No:

B110
REV. A

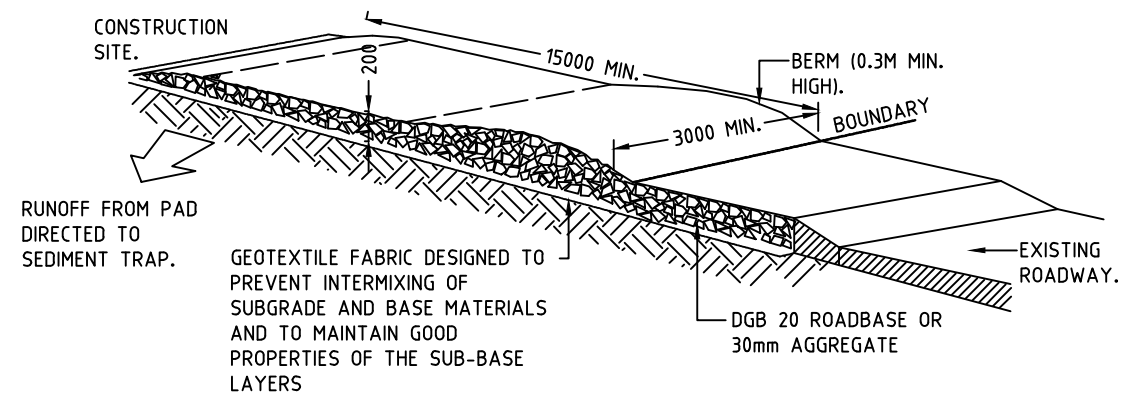
DRAWING:
EROSION & SEDIMENT
CONTROL PLAN

LEGEND:

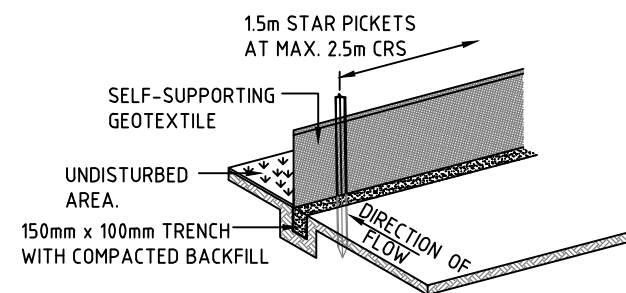
-  SEDIMENT FENCE
-  CONSTRUCTION ENTRY /EXIT
-  STOCK PILE LOCATION

EROSION AND SEDIMENTATION CONTROL NOTES

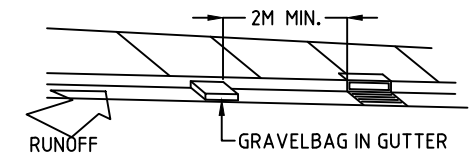
1. BUILDER SHALL PROVIDE SEDIMENT FENCING MATERIAL DURING CONSTRUCTION TO THE LOW SIDE BOUNDARIES. TIE SEDIMENT FENCING MATERIAL TO CYCLONE WIRE SECURITY FENCE. SEDIMENT CONTROL FABRIC SHALL BE AN APPROVED MATERIAL (EG. HUMES PROPEX SILT STOP) STANDING 300 ABOVE GROUND AND EXTENDING 150 BELOW GROUND.
2. EXISTING DRAINS LOCATED WITHIN THE SITE SHALL ALSO BE ISOLATED BY SEDIMENT FENCING MATERIAL.
3. NO PARKING OR STOCKPILING OF MATERIALS IS PERMITTED ON THE LOWER SIDE OF THE SEDIMENT FENCE.
4. GRASS VERGES SHALL BE MAINTAINED AS MUCH AS PRACTICAL TO PROVIDE A BUFFER ZONE TO THE CONSTRUCTION SITE.
5. ROOF DRAINAGE IS TO BE CONNECTED TO THE STORMWATER SYSTEM AS SOON AS PRACTICAL.
6. BUILDER SHALL CHECK AND MAINTAIN ALL EROSION AND SEDIMENT CONTROL MEASURES EVERYDAY THERE IS ACTIVITY ON SITE AND AFTER EVERY STORM EVENT.
7. EROSION AND SEDIMENT CONTROL MEASURES TO BE INSTALLED BEFORE COMMENCEMENT OF WORKS. DISTURBED SURFACES ARE TO BE TREATED AS DETAILED WITH LINING INSTALLED AS SPECIFIED IN DETAIL.



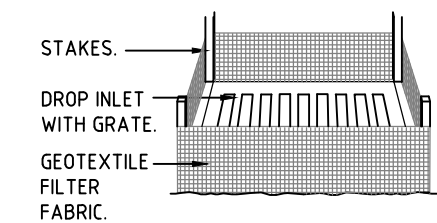
TEMPORARY CONSTRUCTION ENTRY
NTS



SEDIMENT FENCE
NTS



GRAVELBAG KERB SEDIMENT TRAP
NTS



SEDIMENT TRAP TO STORMWATER SUMP
NTS



BUILDING MATERIAL STOCKPILES
NTS

No.	AMENDMENT	DATE	CHK	INT	CONSULTANT:	JOB No:	PROJECT:	DATE:	DRAWING:
A	DA ISSUE	14.02.22	NB	NL	Richmond+Ross PTY LIMITED CONSULTING ENGINEERS AND PROJECT LEADERS ABN 34 001 485 436 38 WILLOUGHBY ROAD, CROWS NEST, NSW 2065 TEL : (02) 9490 9600 FAX : (02) 9438 1224	210181	PROPOSED ALTERATIONS TO EX. 'KRISPY KREME' PENRITH ,NSW, 2750	JULY 2021	EROSION & SEDIMENT CONTROL DETAILS
							DA ISSUE	SCALE: NTS	
								DWG No:	
								B111	
								REV. A	

THIS IS A COMPUTER GENERATED DRAWING.
DO NOT AMEND BY HAND. DO NOT SCALE OFF DRAWING.