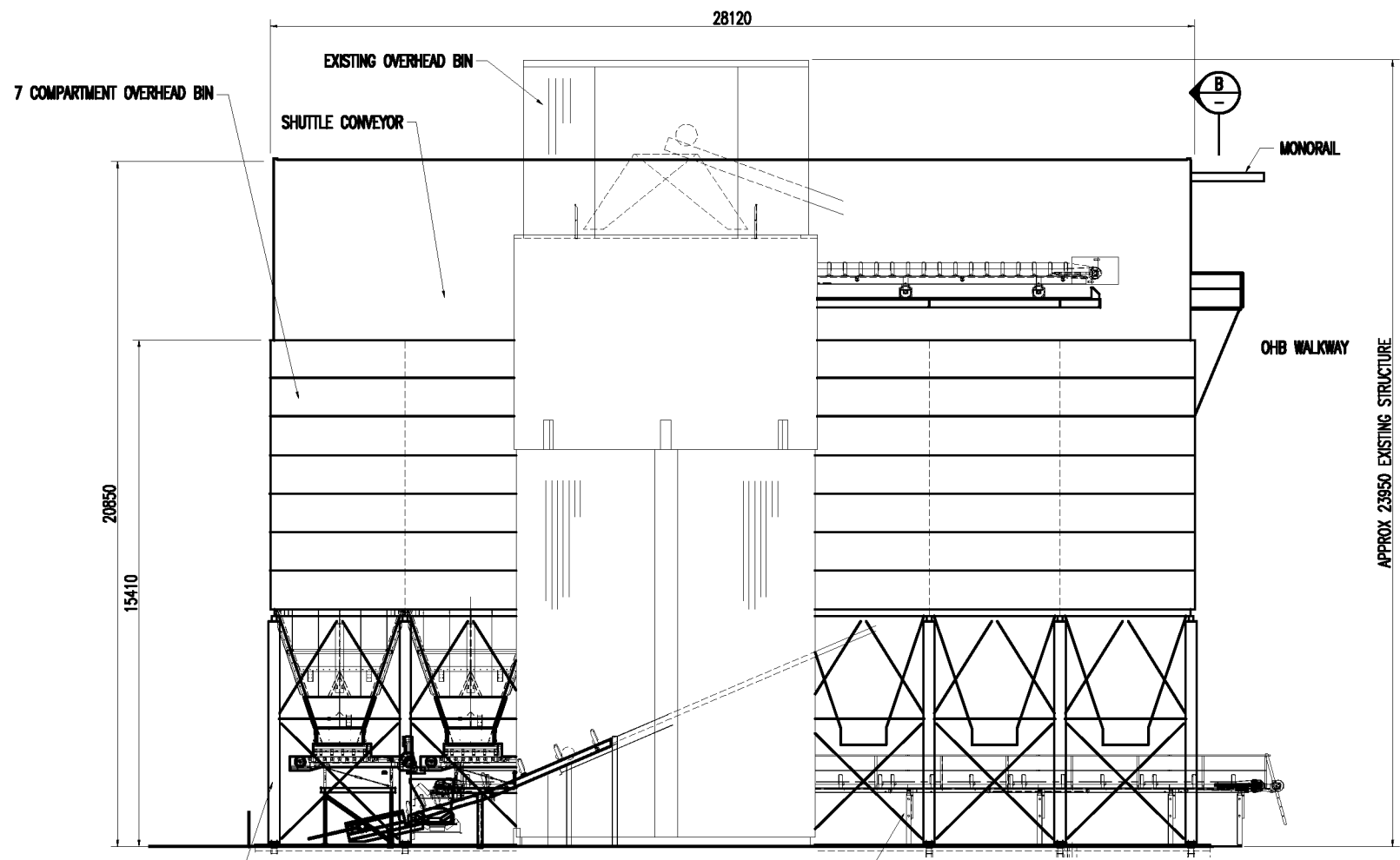
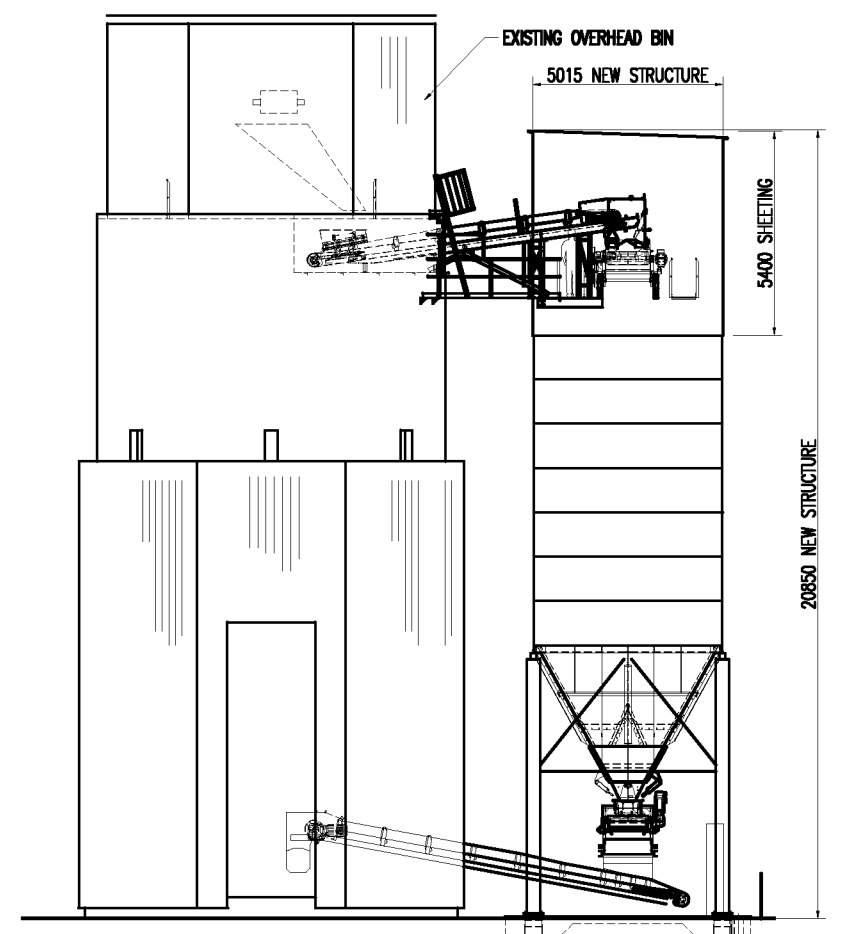


PLAN VIEW



VIEW A
SCALE 1:100



VIEW B
SCALE 1:100

CMQ Engineering Pty Ltd.
 Manufacturing Concrete Batching-Quarrying-Materials Handling Equipment
 157-181 COBALT STREET, CAROLE PARK 4300. BRISBANE.
 TELEPHONE (07) 3579 3288 FAX (07) 3579 3270

— ALL DIMENSIONS ARE IN MILLIMETRES UNLESS OTHERWISE NOTED
 — PROJECTION IS THIRD ANGLE
 THIS COPY REMAINS THE INTELLECTUAL PROPERTY OF CMQ ENGINEERING PTY LTD
 AND IS FOR ITS SOLE USE

©CMQ Engineering Pty Ltd.
 COPYRIGHT PROTECTS THIS PUBLICATION. EXCEPT FOR PURPOSES
 PERMITTED BY THE COPYRIGHT ACT, REPRODUCTION BY WHATEVER
 MEANS IS PROHIBITED WITHOUT THE PRIOR WRITTEN PERMISSION OF
 CMQ ENGINEERING.
 ENQUIRIES TO BE DIRECTED TO CMQ ENGINEERING,
 157-181 COBALT STREET, CAROLE PARK 4300. BRISBANE.
 TELEPHONE (07) 3579 3288

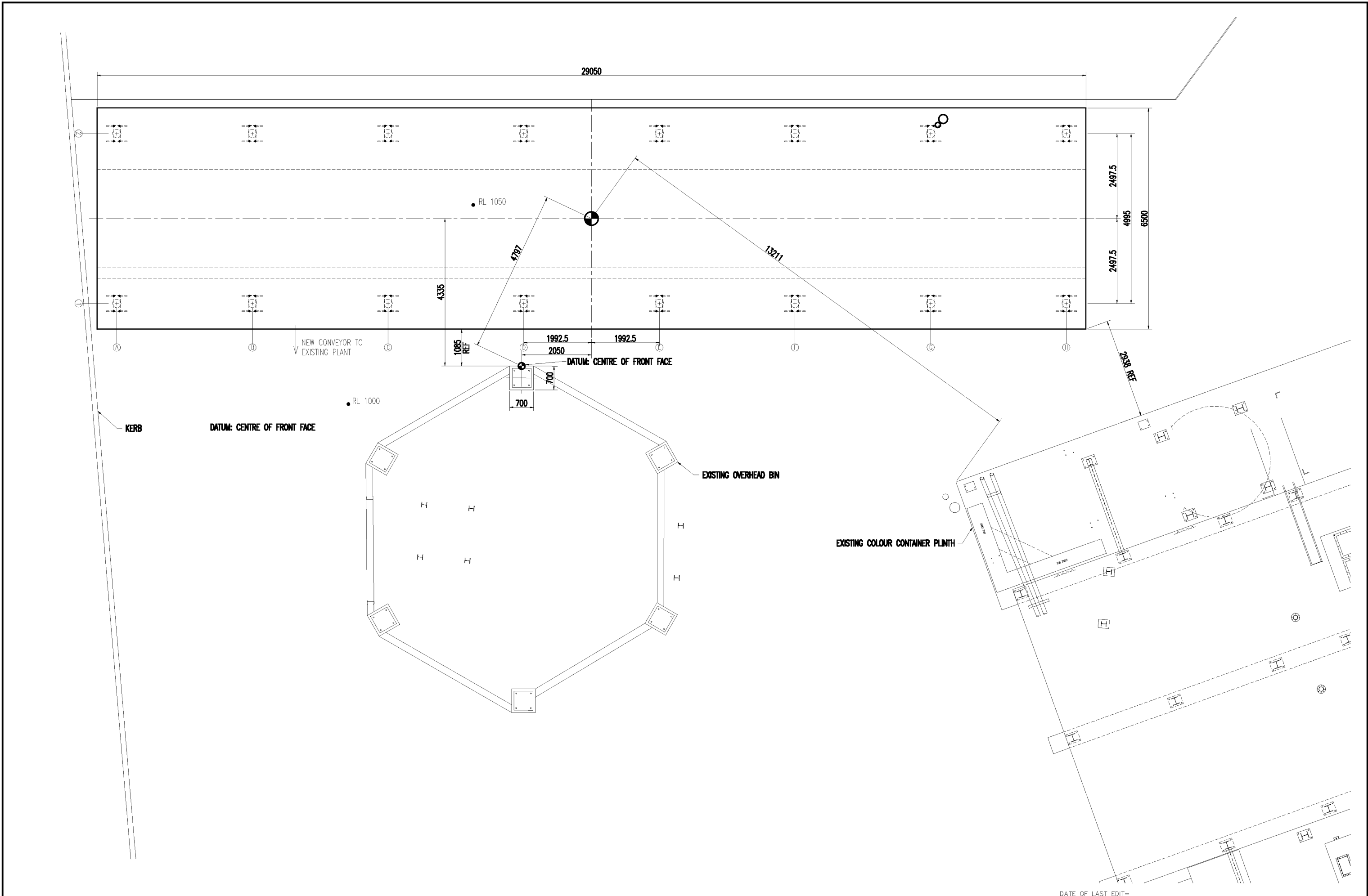
No.	REVISION	DRAWN	DATE
F	DIMENSIONS ADDED	ERB	03.18

No.	REVISION	DRAWN	DATE
E	GENERAL UPDATES	ERB	12.17
D	OHB RAISED 500mm	ERB	08.17
C	UPDATED LAYOUT AFTER SITE MEASURE	ERB	08.17
B	JOB No WNS E1724- NOV 2020. ADDITIONAL NOTATION ADDED	ERB	08.17
A	FOR DISCUSSION ONLY	ERB	01.17

SCALE	1:100
SCALE	1:100
DRAWN	ERB 24.01.2017
CHECKED	- -
DESIGNED	- -
APPROVED	- -
JOB COST No	- -

CMQ Engineering Pty Ltd.
CONCRETE BATCHING PLANT
 WSC. PENRITH
 PROPOSED ADDITIONAL OVERHEAD BIN

DRAWING No. **A1**
2029-0002



DATE OF LAST EDIT=

CMQ Engineering Pty Ltd.
 Manufacturing Concrete Batching-Quarrying-Materials Handling Equipment
 157-161 COBALT STREET, CAROLE PARK 4300. BRISBANE.
 TELEPHONE (07) 3579 3298 FAX (07) 3579 3270

- ALL DIMENSIONS ARE IN MILLIMETRES UNLESS OTHERWISE NOTED
 - PROJECTION IS THIRD ANGLE

THIS COPY REMAINS THE INTELLECTUAL PROPERTY OF CMQ ENGINEERING PTY LTD
 AND IS FOR ITS SOLE USE

©CMQ Engineering Pty Ltd.
 COPYRIGHT PROTECTS THIS PUBLICATION. EXCEPT FOR PURPOSES
 PERMITTED BY THE COPYRIGHT ACT, REPRODUCTION BY WHATEVER
 MEANS IS PROHIBITED WITHOUT THE PRIOR WRITTEN PERMISSION OF
 CMQ ENGINEERING.
 ENQUIRIES TO BE DIRECTED TO CMQ ENGINEERING,
 157-161 COBALT STREET, CAROLE PARK 4300. BRISBANE.
 TELEPHONE (07) 3579 3298

No.	REVISION	DRAWN	DATE	No.	REVISION	DRAWN	DATE
				A	FOR INFORMATION	ERB	12.17

SCALE		1:50	
DRAWN	ERB	05.05.2017	
CHECKED	-	-	-
DESIGNED	-	-	-
APPROVED	-	-	-
JOB COST No			

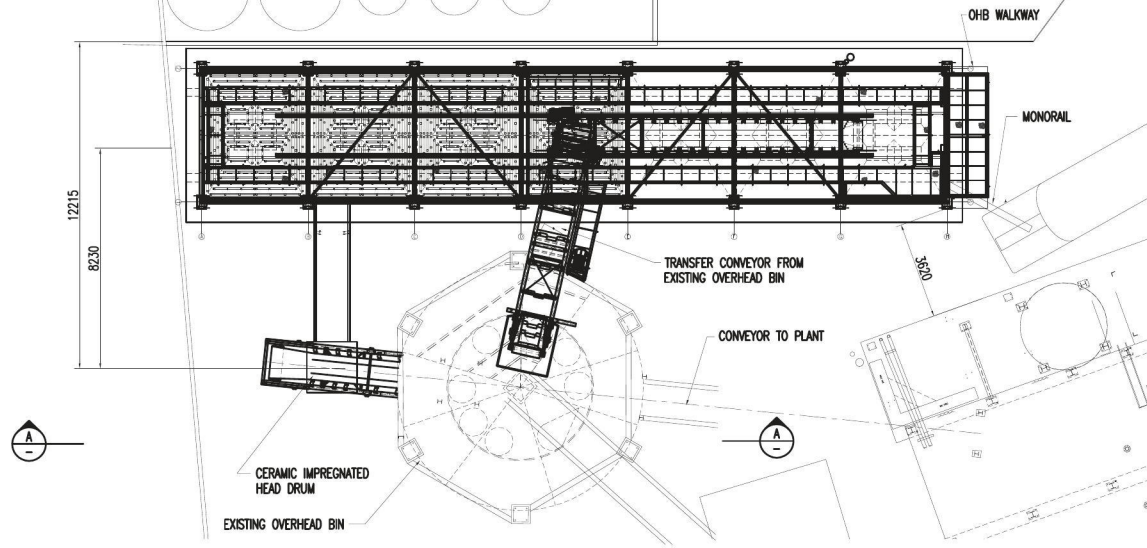
CMQ Engineering Pty Ltd.

CONCRETE BATCHING PLANT
WSC - PENRITH
SITE FOUNDATION LAYOUT

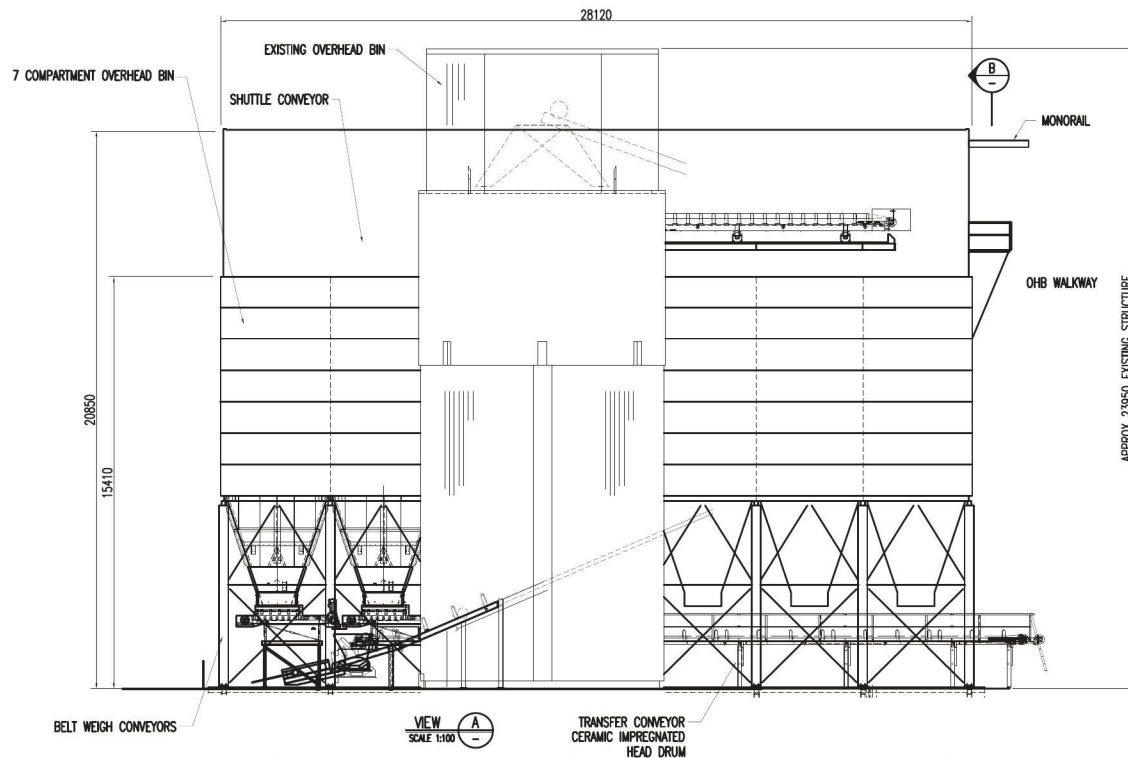
DRAWING No. **A1**

2029-0100

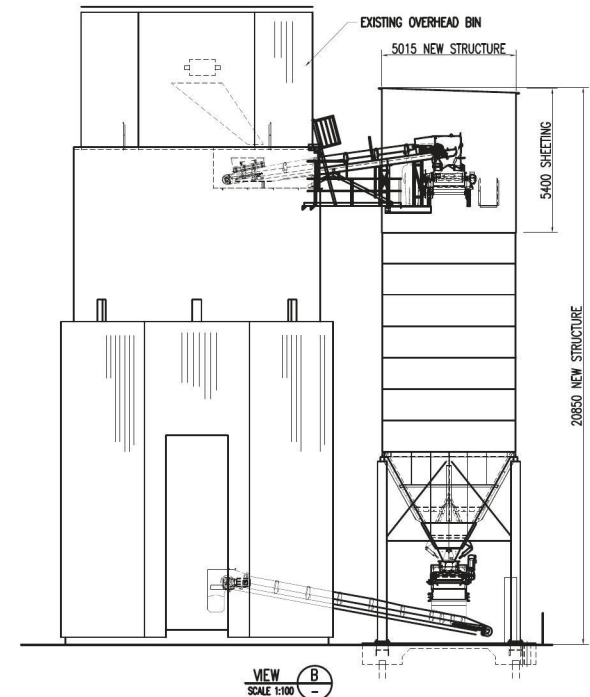
NOTIFICATION PLAN



PLAN VIEW



VIEW A
SCALE 1:100



VIEW B
SCALE 1:100

CMQ Engineering Pty Ltd.
 Manufacturing Concrete Batching-Quarrying-Materials Handling Equipment
 157-161 COBALT STREET, CAROLE PARK 4300 BRISBANE
 TELEPHONE (07) 3879 3288 FAX (07) 3879 3275
 - ALL DIMENSIONS ARE IN MILLIMETRES UNLESS OTHERWISE NOTED
 - PROJECTION IS THIRD ANGLE

CMQ Engineering Pty Ltd.
 COPYRIGHT PROTECTS THIS PUBLICATION. EXCEPT FOR PURPOSES PERMITTED BY THE COPYRIGHT ACT, REPRODUCTION BY WHATEVER MEANS IS PROHIBITED WITHOUT THE PRIOR WRITTEN PERMISSION OF CMQ ENGINEERING.
 ENQUIRIES TO BE DIRECTED TO CMQ ENGINEERING,
 157-161 COBALT STREET, CAROLE PARK 4300. BRISBANE.
 TELEPHONE (07) 3879 3288

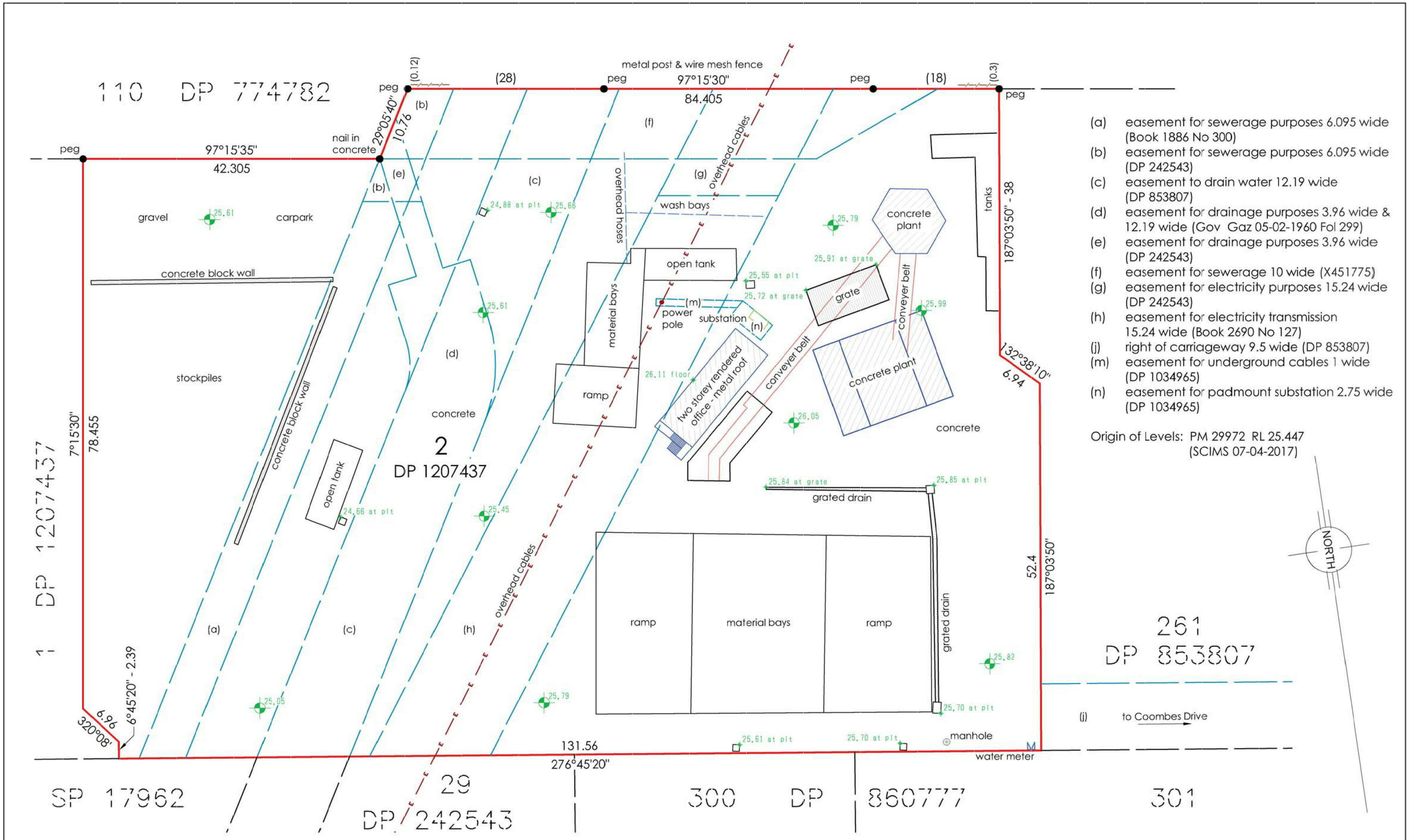
No.	REVISION	DRAWN	DATE	No.	REVISION
F	DIMENSIONS ADDED	ERB	03.18		

E	GENERAL UPDATES	ERB	12.17		
D	OHB RAISED 500mm	ERB	09.17		
C	UPDATED LAYOUT AFTER SITE MEASURE	ERB	09.17		
B	JOB No WAS E1724 NOW 2029. ADDITIONAL NOTATION ADDED	ERB	09.17		
A	FOR DISCUSSION ONLY	ERB	01.17		

SCALE	DATE	SCALE	DATE
1:100	24.01.2017		

DATE OF LAST EDIT=
CMQ Engineering Pty Ltd.
CONCRETE BATCHING PLANT
WSC. PENRITH
PROPOSED ADDITIONAL OVERHEAD BIN

DRAWING No. **A1**
2029-0002



Site Plan - Lot 2 in DP 1207437 1a Coombes Drive Penrith

Client: Peter Vicary	<p>FREEBURN SURVEYING</p>	<p>MATTHEW FREEBURN LAND, ENGINEERING & MINING SURVEYOR SUITE 2, FIRST FLOOR, "SURVEYOR HOUSE" 2 CASTLEREAGH STREET PENRITH 2750</p>	<p>Telephone 02 4721 2289 Fax 02 4721 5646 email a.dean@freeburnsurveyors.com or matthew@freeburnsurveyors.com</p>	Scale 1:500	Datum: AHD	Contour: n/a
				Surveyor: tb/dc	Drawn By: ad	Checked: tb
				Date of Survey: 07-04-2017	Sheet 1 of 1	
				AUTOCAD	Issue 01 18-04-2017	35 895