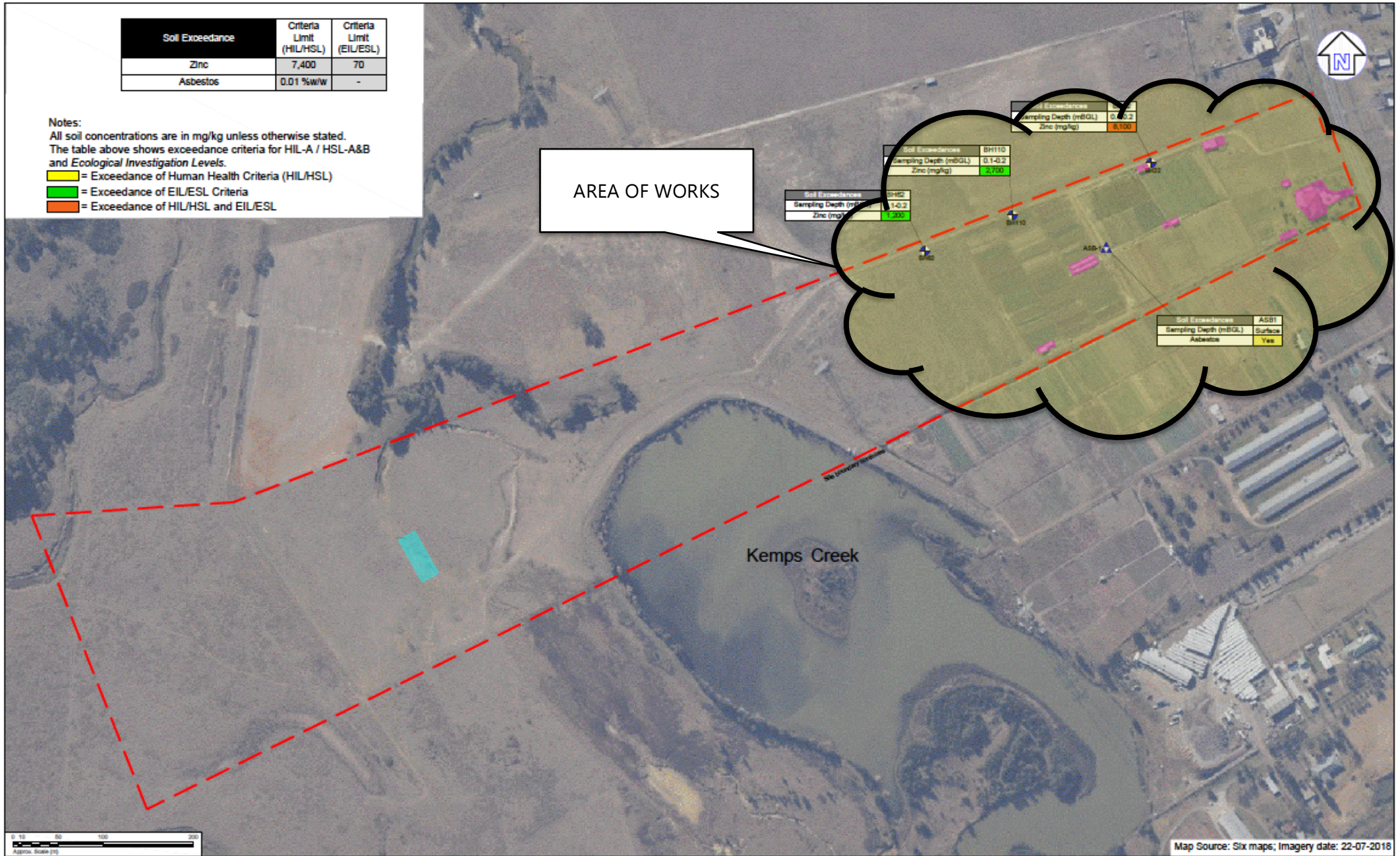


Soil Exceedance	Criteria Limit (HIL/HSL)	Criteria Limit (EIL/ESL)
Zinc	7,400	70
Asbestos	0.01 %w/w	-

Notes:  
All soil concentrations are in mg/kg unless otherwise stated.  
The table above shows exceedance criteria for HIL-A / HSL-A&B and Ecological Investigation Levels.  
 = Exceedance of Human Health Criteria (HIL/HSL)  
 = Exceedance of EIL/ESL Criteria  
 = Exceedance of HIL/HSL and EIL/ESL



#### LEGEND

- Approximate site boundary
- + Approximate borehole location with individual exceedance of zinc
- + Approximate fragment location
- Approximate location of remediation areas underneath site structures
- Approximate location of noted backfill (bricks, concrete) into what appear to be former creek system or excavated area



Suite 6.01, 55 Miller Street, PYRMONT 2009  
Ph (02) 9518 0722 Fax (02) 9518 5088

Drawn: L.C.  
Approved: J.H.  
Date: 20-02-20

**Master Empire Constructions Pty Ltd**  
Remediation Action Plan  
859 Mamre Road, Kemp's Creek, NSW  
Exceedance & Remediation Plan

SITE PLAN  
S-01