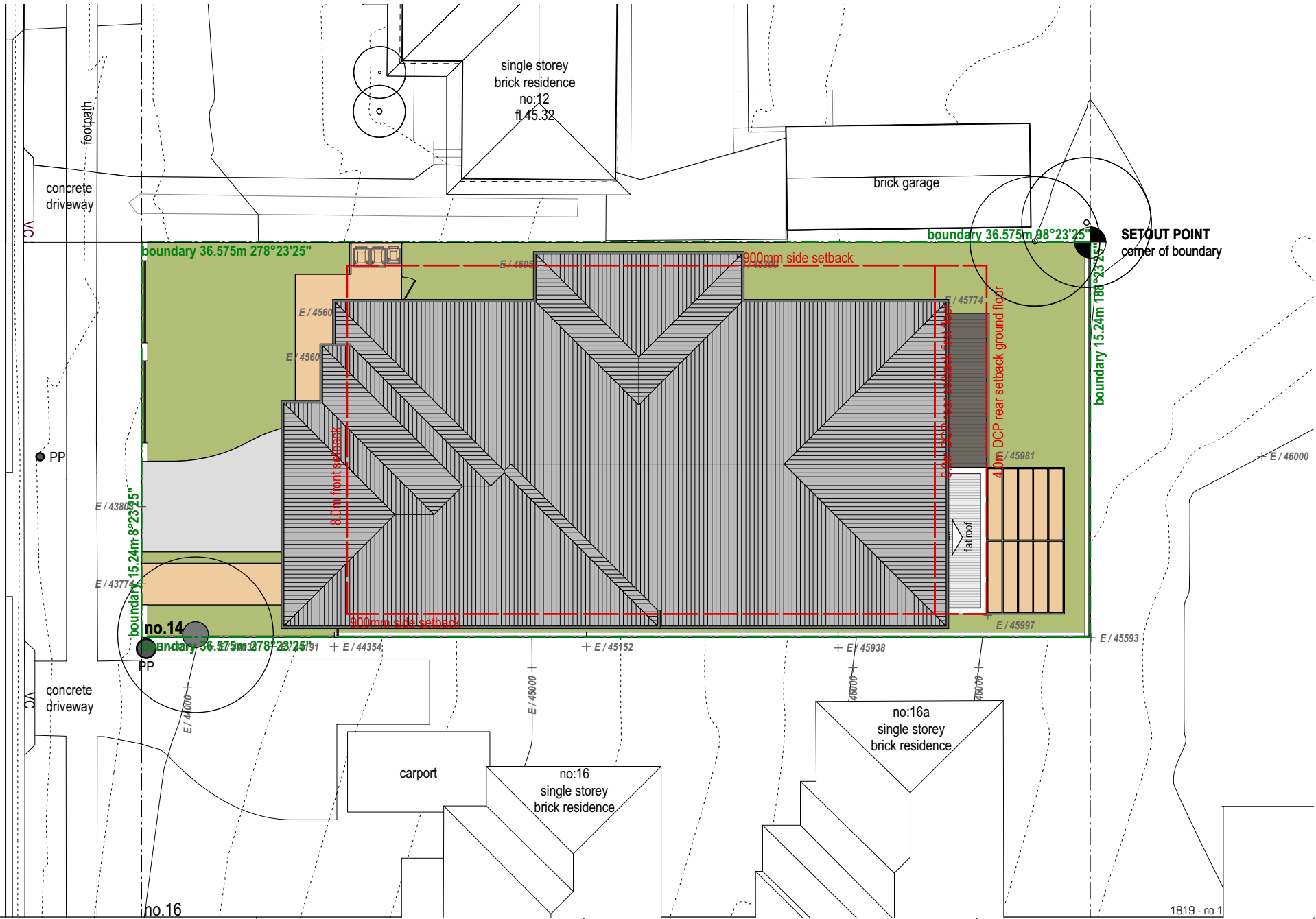


manning street

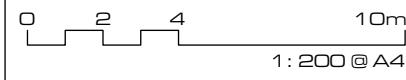


SETOUT POINT
corner of boundary

KENNEDY ASSOCIATES ARCHITECTS

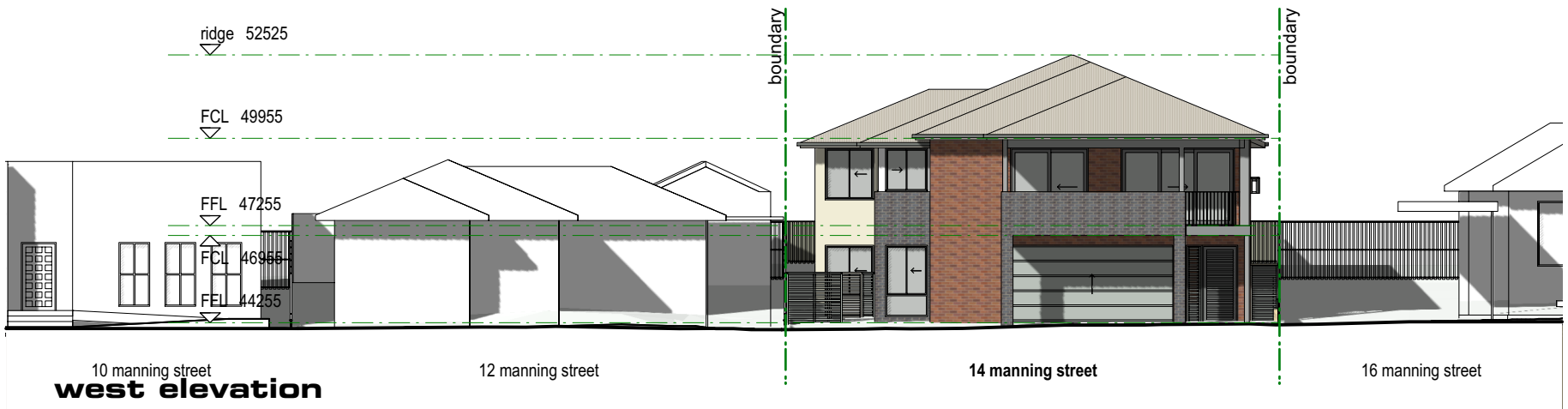
level 3 / 1 booth street annandale 2038
nominated architect - anthony nolan - registration no. 6773
p + 61 2 9557 6466f + 61 2 9557 6477

Notification Plan 1 - no 14



Specialist disability accommodation at:
14 Manning Street, KINGSWOOD

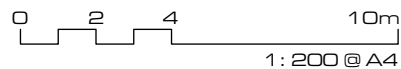
project number	drawing number	rev.
1810	SD20	
date		



KENNEDY ASSOCIATES ARCHITECTS

level 3 / 1 booth street annandale 2038
 nominated architect - anthony nolan - registration no. 6773
 p + 61 2 9557 6466f + 61 2 9557 6477

Notification Plan 2 - no 14



Specialist disability accommodation at:
14 Manning Street, KINGSWOOD

1819 - no 14 180830 FJ.vwx

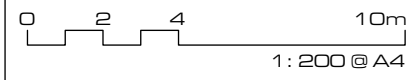
project number	drawing number	rev.
1810	SD21	
date		



KENNEDY ASSOCIATES ARCHITECTS

level 3 / 1 booth street annandale 2038
 nominated architect - anthony nolan - registration no. 6773
 p + 61 2 9557 6466f + 61 2 9557 6477

Notification Plan 3 - no 14



Specialist disability accommodation at:
14 Manning Street, KINGSWOOD

1819 - no 14 180830 FJ.vwx	
project number	drawing number rev.
1810	SD22
date	