

**EXTERNAL WALLS**



B1: FACE BRICKWORK 'EARTH' BY AUSTRAL BRICKS OR SIMILAR, WITH OFF WHITE MORTAR



B2: FACE BRICKWORK 'ASPHALT' BY AUSTRAL BRICKS OR SIMILAR, WITH OFF WHITE MORTAR



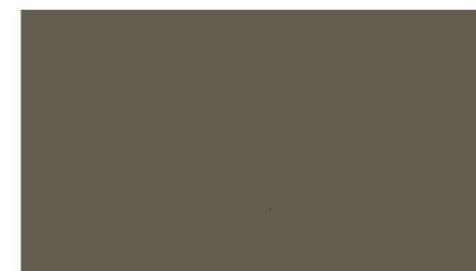
RB1: RENDERED BRICKWORK DULUX 'BEIGE ROYAL HALF' P15B1H



RB2: RENDERED BRICKWORK DULUX 'HEIFER' P14B2

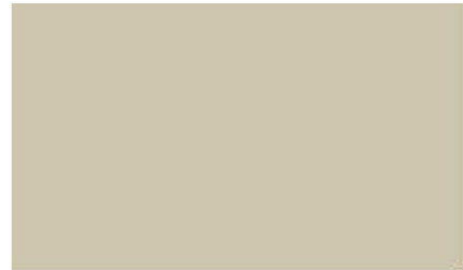


RB3: RENDERED BRICKWORK DULUX 'BOGART' P14B5



RB4: RENDERED BRICKWORK DULUX 'PLOUGHED EARTH' P14B7

**F.C. SHEET**



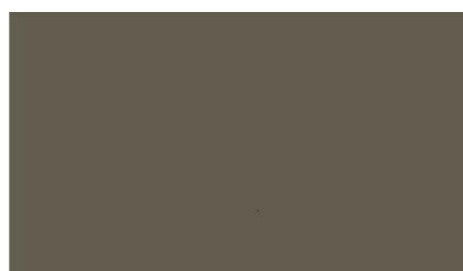
F1: 7.5MM MIN. THK F.C. SHEET, RENDERED DULUX 'BEIGE ROYAL HALF' P15B1H



F2: 7.5MM MIN. THK F.C. SHEET, RENDERED DULUX 'HEIFER' P14B2



F3: 7.5MM MIN. THK F.C. SHEET, RENDERED DULUX 'BOGART' P14B5

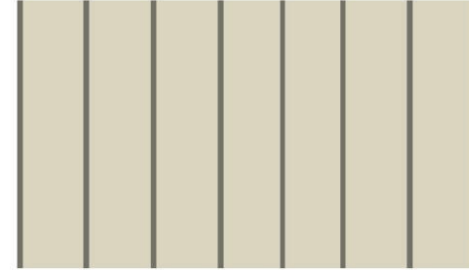


F4: 7.5MM MIN. THK F.C. SHEET, RENDERED DULUX 'PLOUGHED EARTH' P14B7

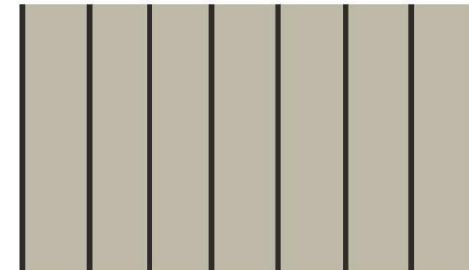
**CLADDING**



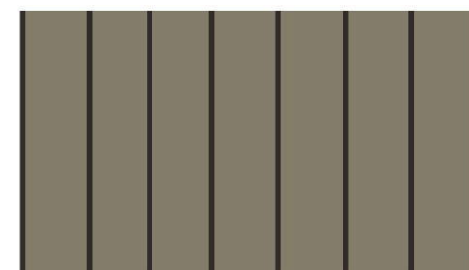
F5 HARDIES SCYON AXON CLADDING, PAINT FINISH 'BEIGE ROYAL HALF' P15B1H



F6 HARDIES SCYON AXON CLADDING, PAINT FINISH 'HEIFER' P14B2



F7 HARDIES SCYON AXON CLADDING, PAINT FINISH 'BOGART' P14B5



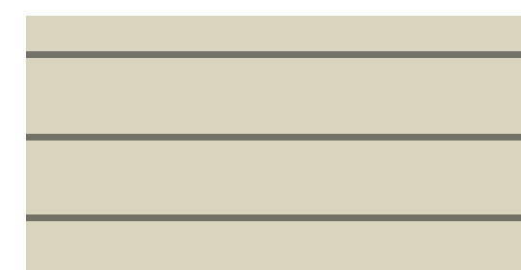
F8 HARDIES SCYON AXON CLADDING, PAINT FINISH 'PLOUGHED EARTH' P14B7



F9 HARDIES SCYON AXON CLADDING, PAINT FINISH 'WHISPER WHITE' PCWF6



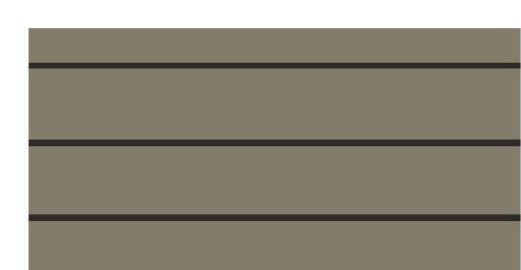
F10 HARDIES SCYON STRIA CLADDING, PAINT FINISH 'BEIGE ROYAL HALF' P15B1H



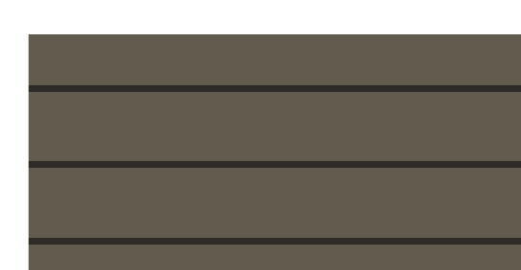
F11 HARDIES SCYON STRIA CLADDING, PAINT FINISH 'HEIFER' P14B2



F12 HARDIES SCYON STRIA CLADDING, PAINT FINISH 'BOGART' P14B5



F13 HARDIES SCYON STRIA CLADDING, PAINT FINISH 'PLOUGHED EARTH' P14B7



F14 HARDIES SCYON STRIA CLADDING, PAINT FINISH 'WHISPER WHITE' PCWF6



F15 HARDIES MATRIX STRIA CLADDING, PAINT FINISH 'BEIGE ROYAL HALF' P15B1H



F16 HARDIES SCYON MATRIX CLADDING, PAINT FINISH 'HEIFER' P14B2



F17 HARDIES SCYON MATRIX CLADDING, PAINT FINISH 'BOGART' P14B5



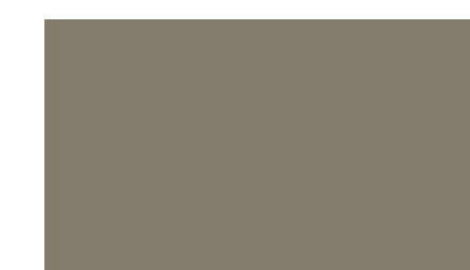
F18 HARDIES SCYON MATRIX CLADDING, PAINT FINISH 'WHISPER WHITE' PCWF6



F19: 75MM THK POLYSTYRENE FOAM CLADDING, RENDERED DULUX 'BEIGE ROYAL HALF' P15B1H



F20: 75MM THK POLYSTYRENE FOAM CLADDING, RENDERED DULUX 'HEIFER' P14B2



F21: 75MM THK POLYSTYRENE FOAM CLADDING, RENDERED DULUX 'BOGART' P14B5



F22: 75MM THK POLYSTYRENE FOAM CLADDING, RENDERED DULUX 'PLOUGHED EARTH' P14B7

**ROOF**



R: CONCRETE TILED ROOFING, SLATE GREY FINISH

**BULUSTRADES AND POST**



T: TIMBER POST/ BEAMS PAINTED DULUX 'PLOUGHED EARTH' P14B7



F: FENCE: TIMBER FENCE ALTERNATE WITH COLORBOND PANEL



OG: BALCONY BALUSTRADES. OBSCURE GLAZING (OR TRANSLUCENT)

**DOORS AND WINDOWS**

**WINDOWS**



WINDOWS: POWDER COATED SAMPLE



WINDOW FINISH: MERINO

**GARAGE DOOR**



GARAGE PANEL LIFT DOORS

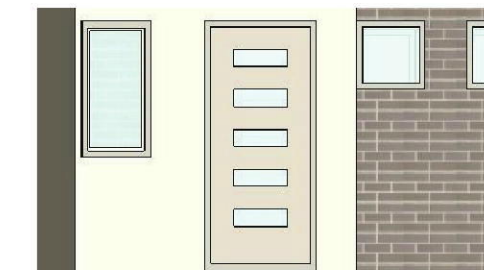


PL1: COLORBOND DUNE FINISH

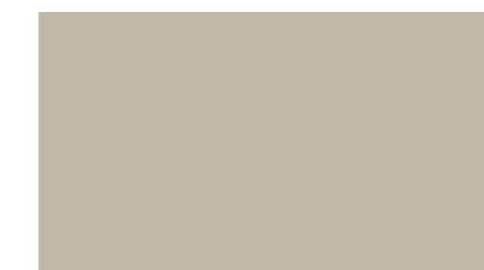


PL2: COLORBOND PAPERBARK FINISH

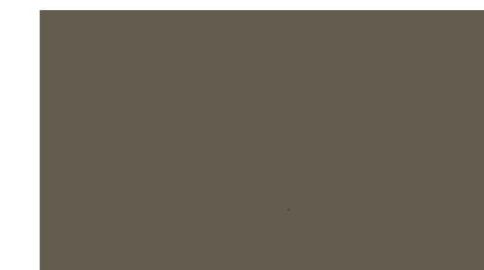
**ENTRY DOOR**



FRONT ENTRY TIMBER DOORS PAINTED



FRONT ENTRY TIMBER DOORS PAINTED 'HEIFER' P14B2



FRONT ENTRY TIMBER DOORS PAINTED 'PLOUGHED EARTH' P14B7

**FASCIA AND DOWNPIPE**

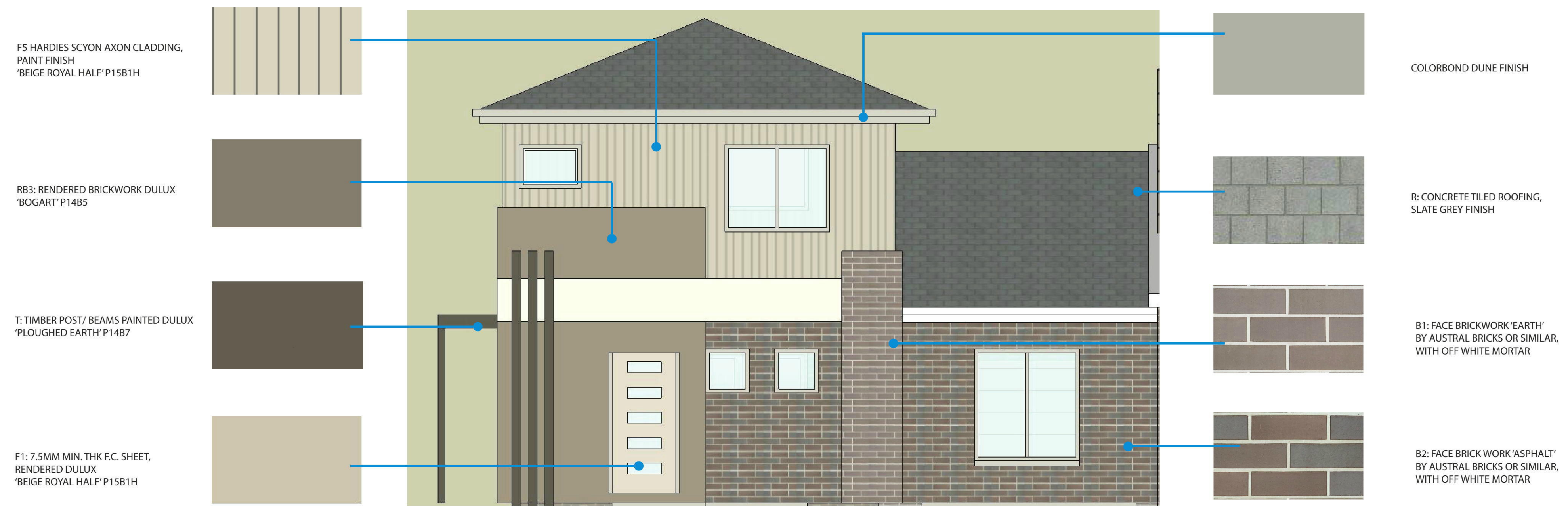


COLORBOND DUNE FINISH



COLORBOND DUNE FINISH

**FINISHES SCHEDULE - TOWNHOUSE PART 1 OF 2**



**UNIT ONE NORTH ELEVATION**



**UNIT 12 EAST ELEVATION**

**FINISHES SCHEDULE - TOWNHOUSE PART 2 OF 2**

**MATERIAL / FINISH**

**EXTERNAL WALLS**



**FB1**  
AUSTRAL  
ULTRA SMOOTH JAZZ

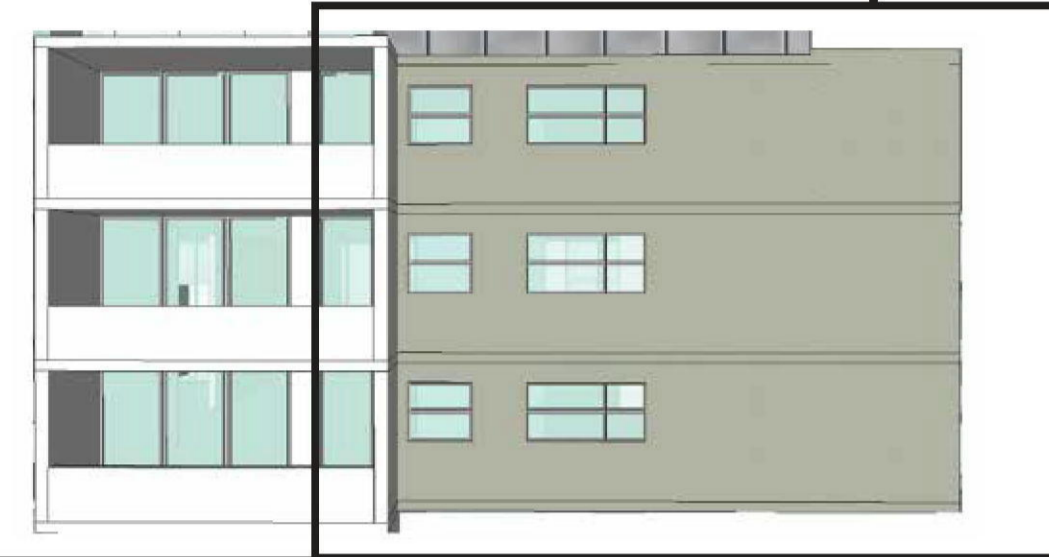


**FB2**  
AUSTRAL  
ULTRA SMOOTH CHILL

**APPLICATION**



DARK BRICKS ARE USED FOR WALLS THAT ARE RECESSED. THE COLOUR THEME IS THAT THEY BECOME A BACKGROUND FOR LIGHTER EXTRUDED ELEMENTS TO CONTRAST.



LIGHTER SHADE OF BRICK IS USED AS A PROMINANT FACADE FOR WALLS THAT ARE IN THE FOREGROUND

60% OF FACADES ARE MASONRY WALLS

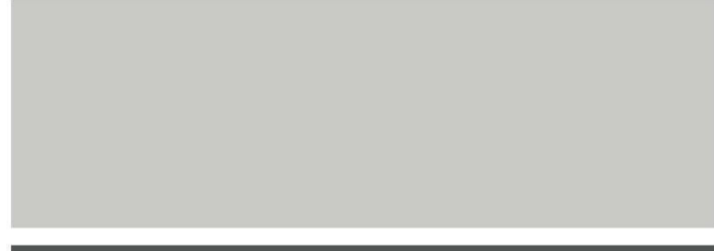
**COMMON PAINT SCHEME**



**PF1**  
DULUX  
MOXA



**PF2**  
DULUX  
STEPNEY



**PF3**  
DULUX  
DIESKAU



**PF4**  
DULUX  
JUVENILE



**PF5**  
DULUX  
VIVID WHITE

**DIFFERENTIATING PAINT SCHEME**

**BLOCK A**



**PF6**  
DULUX  
PERMISSION



**PF10**  
DULUX  
CLUNIES



**PF7**  
DULUX  
CLARE VALLEY



**PF11**  
DULUX  
MERIMBULA

**BLOCK B**



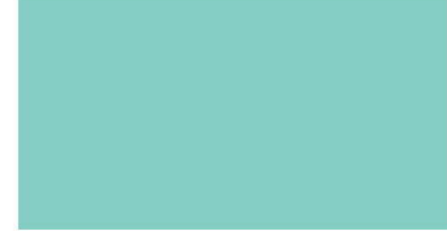
**PF8**  
DULUX  
GOLD RUSH



**PF12**  
DULUX  
GREEN BUOY

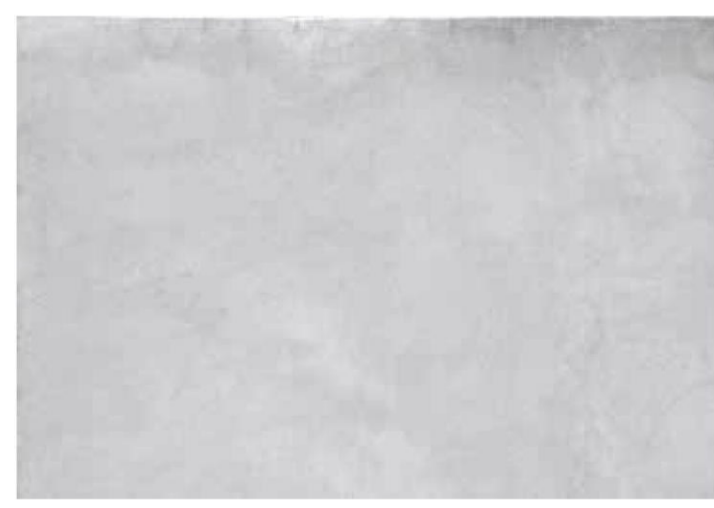


**PF9**  
DULUX  
HAPPY



**PF13**  
DULUX  
SURF WASH

**CONCRETE WALLS**



**OFC2**  
FORMED CONCRETE  
SMOOTH POLISH FINISH

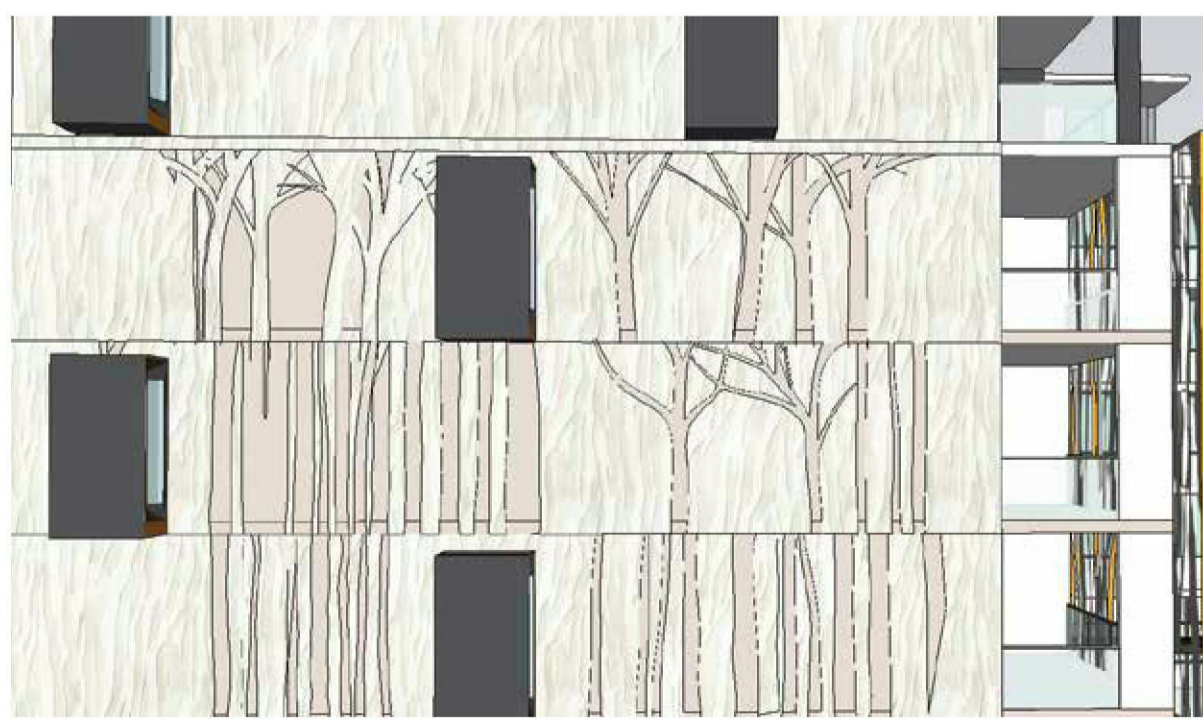


**OFC1**  
FORMED CONCRETE  
TEXTURED FINISH

**MOULDED PRECAST PANELS**



**PCM**  
PRECAST MOULDS AS  
PER ARTWORK TO BE  
DEVELOPED IN CC STAGE

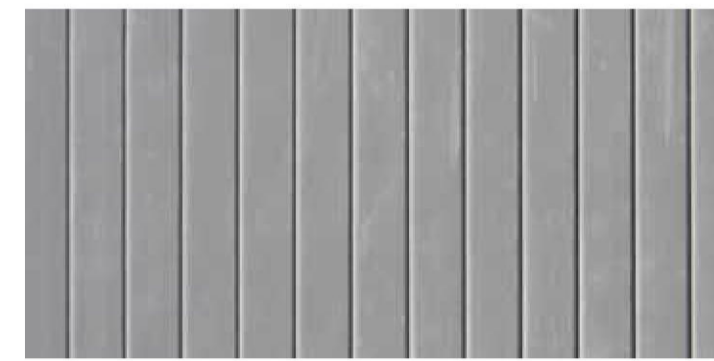


**MATERIAL / FINISH**

**CLADDING SYSTEMS**



**C1**  
SCYON MATRIX CLADDING  
1200mm VERTICAL  
APPLICATION,  
LAPSTONE FINISH



**C2**  
SCYON AXON CLADDING  
100mm VERTICAL  
APPLICATION,  
CRYSTAL GLAZING FINISH

**CLADDING SYSTEMS**



**C3**  
PARKLEX FACADE  
COPPER FINISHES RANGE

**CLADDING SYSTEMS**



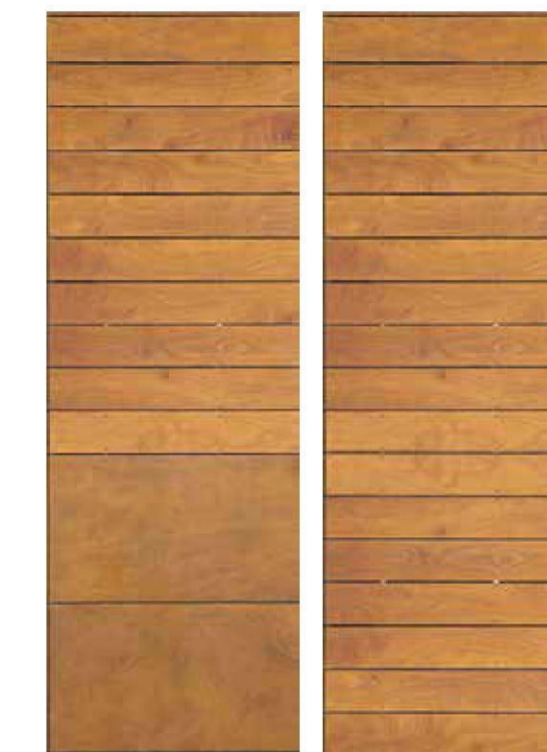
**C4**  
TILE CLADDING  
EARTH

**APPLICATION**



PREDOMINANTLY APPLIED TO ROOF CAPPING AND FOLD DOWN ONTO LEVEL 5 - 6

**EXAMPLE USE**

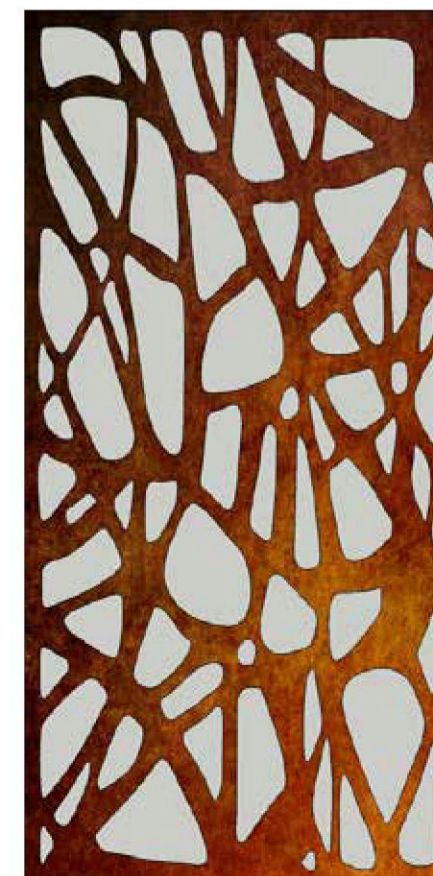


PATTERN DESIGNED TO INTEGRATE WITH WALLS AND WINDOWS

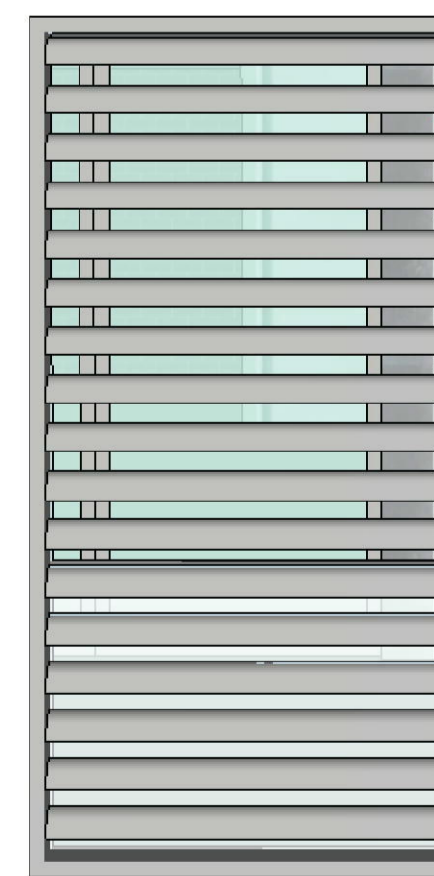


APPLIED TO FULL HEIGHT WALLS PARTICULARLY AS AN ARCHITECTURAL LANGUAGE TO SEPERATE COMMERCIAL AND RESIDENTIAL

**PRIVACY SCREENS**



**MS1** - FEATURE PRIVACY SCREEN  
CNC CUT STEEL  
FINISH TO BE CONFIRMED



**ML** - PRIVACY SCREEN  
ALUMINIUM POWDER COATED



**SC 1** - FEATURE PRIVACY SCREEN  
CNC CUT STEEL  
FINISH TO BE CONFIRMED



**SC 2** - PRIVACY SCREEN  
ALUMINIUM POWDER COATED

NOTE  
ALL FINISHES ARE NOMINATED AND SUBJECT TO AVAILABILITY

**MATERIALS & FINISHES - MIXED USE**