



Tel: 02 8004 0460  
www.auswideconsulting.com.au  
info@auswideconsulting.com.au  
ABN 18 162 361 042

## WASTE MANAGEMENT PLAN

**46-66 O'Connell Street, Caddens NSW 2747**

*Proposed Multi-Residential Development*

Prepared for:	PBD Architects
Date Prepared:	February 2021
Revision:	1.0
Penrith City Council Application #:	TBA

# INDEX

<b>Introduction.....</b>	<b>3</b>
<b>Background and Existing Conditions .....</b>	<b>3</b>
Figure 1: Location of the Subject Site.....	4
Figure 2: Aerial View of the Subject Site .....	4
<b>Proposed Development .....</b>	<b>5</b>
<b>Anticipated Waste Generation, Storage and Collection .....</b>	<b>5</b>
<b>Waste Generation.....</b>	<b>5</b>
Figure 3: Typical General, Recycling, and Organic Waste MGB’s Supplied by Council .....	5
<b>Waste within Overall Development .....</b>	<b>6</b>
<b>Waste Storage Areas.....</b>	<b>6</b>
Table 1: Typical Measurements for 140L & 240L MGB’s.....	6
Figure 4: Road Design to Allow Service by Council’s 12.5m Heavy Rigid Waste Collection Vehicle .....	6
Figure 5: Waste Guidelines for the Proposed MGB’s .....	7
Figure 6: Scaled Diagram of the Waste Storage Areas & Placement for Collection (Western End).....	8
Figure 7: Scaled Diagram of the Waste Storage Areas & Placement for Collection (Eastern End) .....	9
<b>Waste Collection.....</b>	<b>10</b>
Figure 8: Template of Penrith Councils 12.5m HRV Waste Collection Vehicle .....	10
<b>Amenity .....</b>	<b>11</b>
Noise.....	11
Ventilation .....	11
Security/Communication Strategy.....	11
Cleaning Facilities.....	11
Prevention of Vermin.....	11
<b>Miscellaneous.....</b>	<b>12</b>
Communal Composting Facility.....	12
Dwelling Food Waste Storage .....	12
Green Waste/Food Waste .....	12
Bulky Hard Waste .....	12
E-Waste.....	12
<b>Appendix A – Floor Plan.....</b>	<b>13</b>
<b>Appendix B – Swept Path Diagrams .....</b>	<b>14</b>

## Introduction

AusWide Consulting was commissioned by PBD Architects to prepare a Waste Management Plan (WMP) for approval of a proposed multi-residential development at 46-66 O'Connell Street, Caddens NSW.



The proposed development consists of; 160 Houses, 3 & 4 bedroom ranging 140-190m<sup>2</sup>.

In the course of preparing this WMP, the subject site and its environs have been inspected, plans of the development examined, and all relevant council requirements and documentation collected and analysed.



This WMP has been prepared based on the following information:

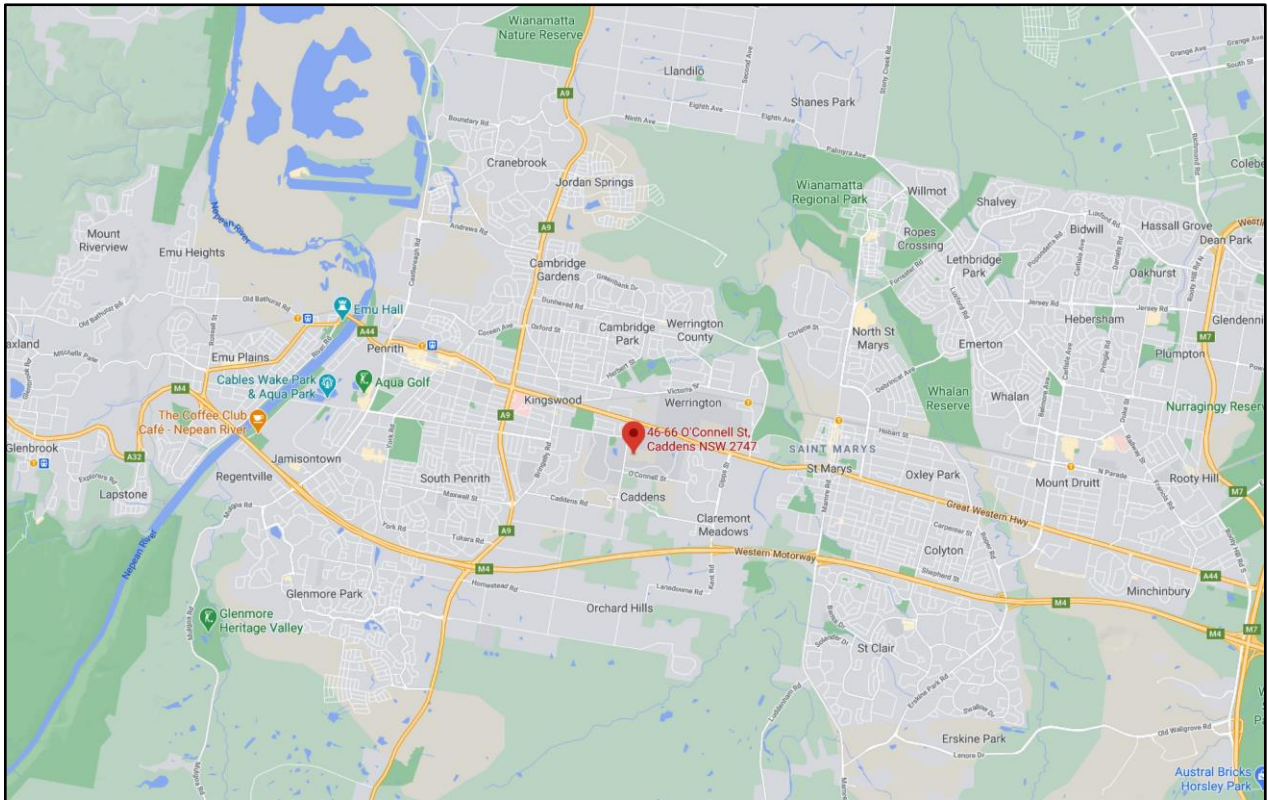
- Architectural Plans provided by PBD Architects.
- As per the Penrith City Council Waste Guidelines.

## Background and Existing Conditions

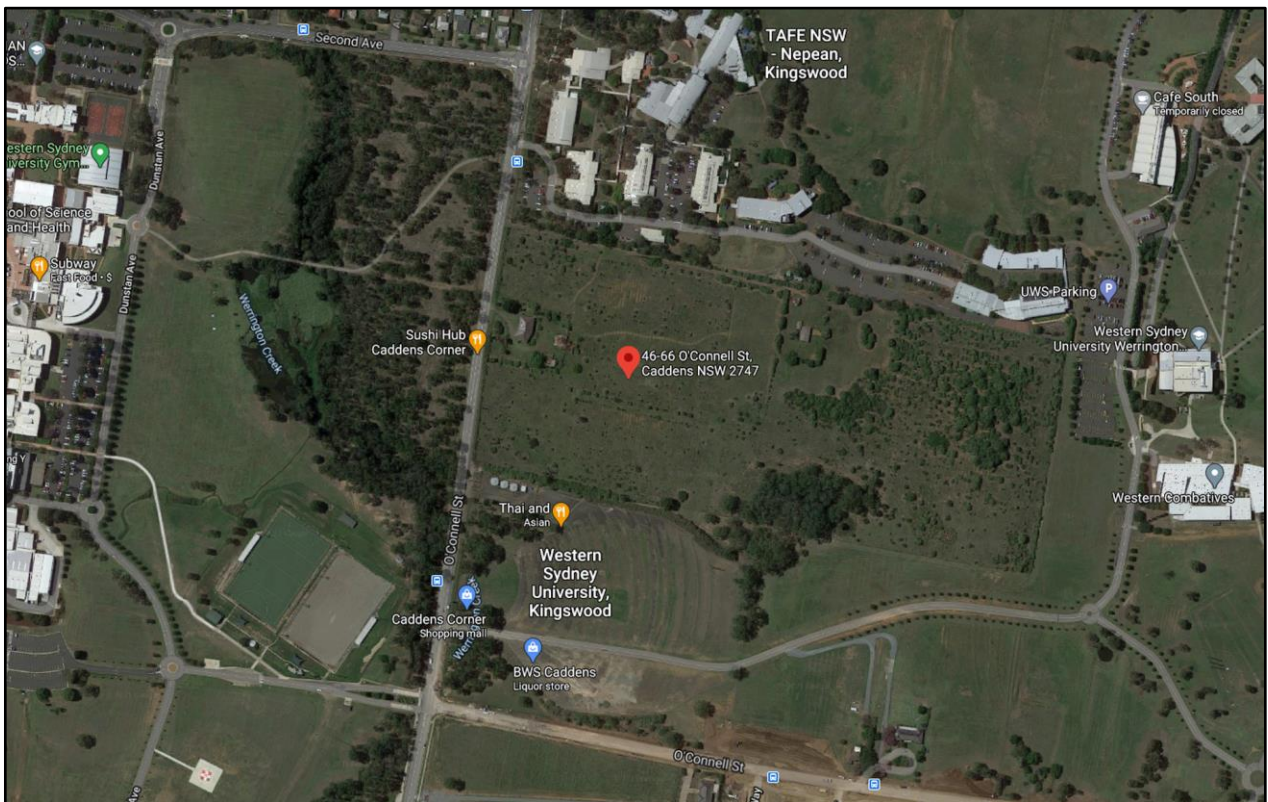
The subject site is located at 46-66 O'Connell Street, Caddens NSW, on the east side of O'Connell Street with the surrounding nearby land use consisting of Western Sydney University, Tafe NSW and a recreational sports park.



**Figure 1** provides an overview of the area and its surrounding land uses whilst **Figure 2** provides an aerial view of the immediate area surround the subject site.



**Figure 1: Location of the Subject Site**



**Figure 2: Aerial View of the Subject Site**

## Proposed Development

The proposed multi-residential development consists of 160 homes with the main access for the development via O'Connell Street. The Mobile Garbage bins (MGB's) will be stored in the rear yard of each property with access through the garage for kerbside collection. **(Refer Appendix A).**

## Anticipated Waste Generation, Storage and Collection

Waste collection should be provided by a Penrith City Council.

**NOTE:** Residents will be responsible for placing the MGB's on O'Connell Street kerbside, on the day of collection.

### Waste Generation

As per the Penrith City Council Waste Guidelines,

The residential waste entitlement per dwelling is 140L General Waste MGB, 240L Commingled Recycling Waste MGB plus a 240L Organic (FOGO) Waste MGB.

The following figure illustrates councils typical general, recycling, and organic waste MGB's.



**Figure 3: Typical General, Recycling, and Organic Waste MGB's Supplied by Council**

## Waste within Overall Development

Councils Weekly Residual Waste Service Collection Service Shown Below:

### Waste Storage Areas

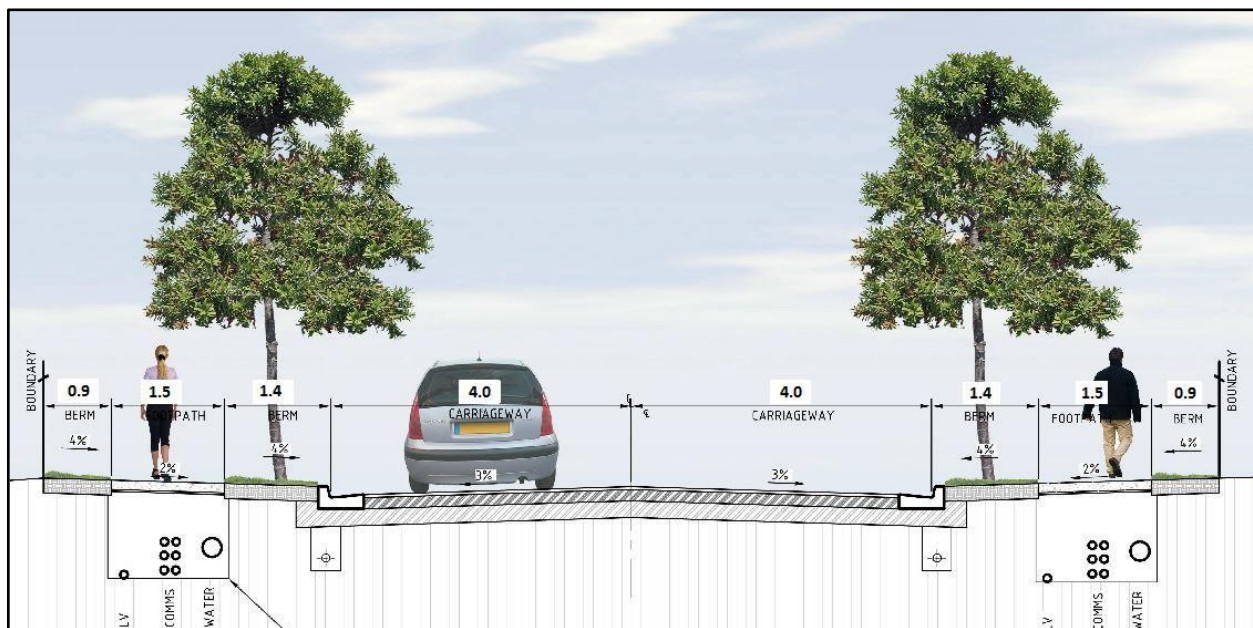
Based on the information provided above, the following Mobile Garbage Bins (MGB's) should be provided:

- 1 x 140L General Waste MGB – collected and emptied weekly.
- 1 x 240L Recycling Waste MGB – collected and emptied fortnightly.
- 1 x 240L Organic Waste MGB – collected and emptied weekly.

The following table illustrates the typical dimensions of 140L & 240L MGB's mentioned above.

**Table 1: Typical Measurements for 140L & 240L MGB's.**

Size (L)	Height (mm)	Width (mm)	Depth (mm)
140L	915	505	615
240L	1,100	600	740



**Figure 4: Road Design to Allow Service by Council's 12.5m Heavy Rigid Waste Collection Vehicle**



Food & Garden	Recycling	Garbage
<ul style="list-style-type: none"> <li>✓ All food waste and scraps.</li> <li>✓ Meat, chicken, fish scraps and bones.</li> <li>✓ Tea bags, coffee grounds.</li> <li>✓ Fruit, vegetable scraps.</li> <li>✓ Cake, bread, rice, pasta.</li> <li>✓ lawn clippings, leaves, prunings, small sticks, flowers.</li> <li>✓ Weeds (except Tropical Soda Apple).</li> <li>✓ Small non-treated timber offcuts.</li> <li>✓ Shredded paper, paper towel, serviettes.</li> <li>✓ Council provided compostable caddy liner.</li> <li>✗ Plastic bags, food packaging, cling wrap, or recyclables.</li> </ul>	<ul style="list-style-type: none"> <li>✓ All recycling.</li> <li>✓ Steel, tin, aluminium cans, empty aerosols.</li> <li>✓ Clear, brown, green glass bottles / jars (rinsed, no lids).</li> <li>✓ Plastic bottles, soft drink bottles, containers (rinsed, no lids).</li> <li>✓ Carboard boxes, milk, juice cartons.</li> <li>✓ Newspapers, magazines, office paper, junk mail, window envelopes.</li> <li>✓ Council provided compostable caddy liner.</li> <li>✗ Plastic bags, light bulbs, mirrors, drinking glasses, general and food waste, ceramics, crockery, foam, ovenware, polystyrene, waxed cardboard boxes.</li> </ul>	<ul style="list-style-type: none"> <li>✓ General waste.</li> <li>✓ Plastic bags.</li> <li>✓ Packets, wrappers, cling wrap, bubble wrap.</li> <li>✓ Nappies, sanitary waste, (wrapped tightly, stored in a well-sealed bag).</li> <li>✓ Animal faeces, bedding, and kitty litter.</li> <li>✓ Foam, polythene, and polystyrene.</li> <li>✓ Light bulbs, mirrors, ceramics, cookware, drinking glasses.</li> <li>✓ Contents of your vacuum cleaner, cotton wool, buds and cigarette ends.</li> <li>✗ Building materials, syringes, oil or paint, gas bottles, hazardous or chemical waste.</li> <li>✗ Medical waste: (speak to your doctor / pharmacy).</li> </ul>

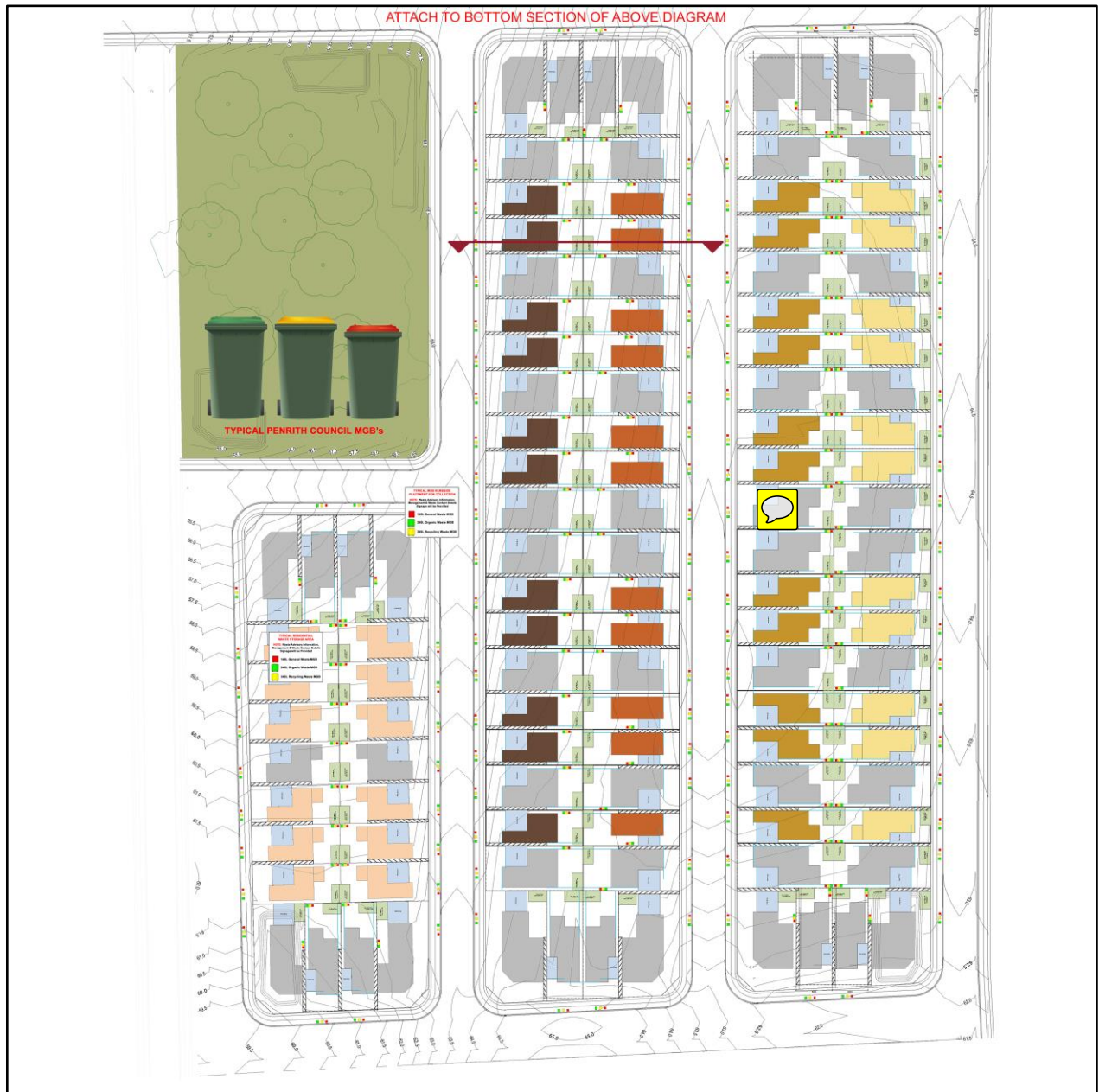
**Figure 5: Waste Guidelines for the Proposed MGB's**

The following figures illustrates the scaled diagrams of the MGB's within the waste storage areas, and kerbside placement for collection.



**Figure 6: Scaled Diagram of the Waste Storage Areas & Placement for Collection (Western End)**





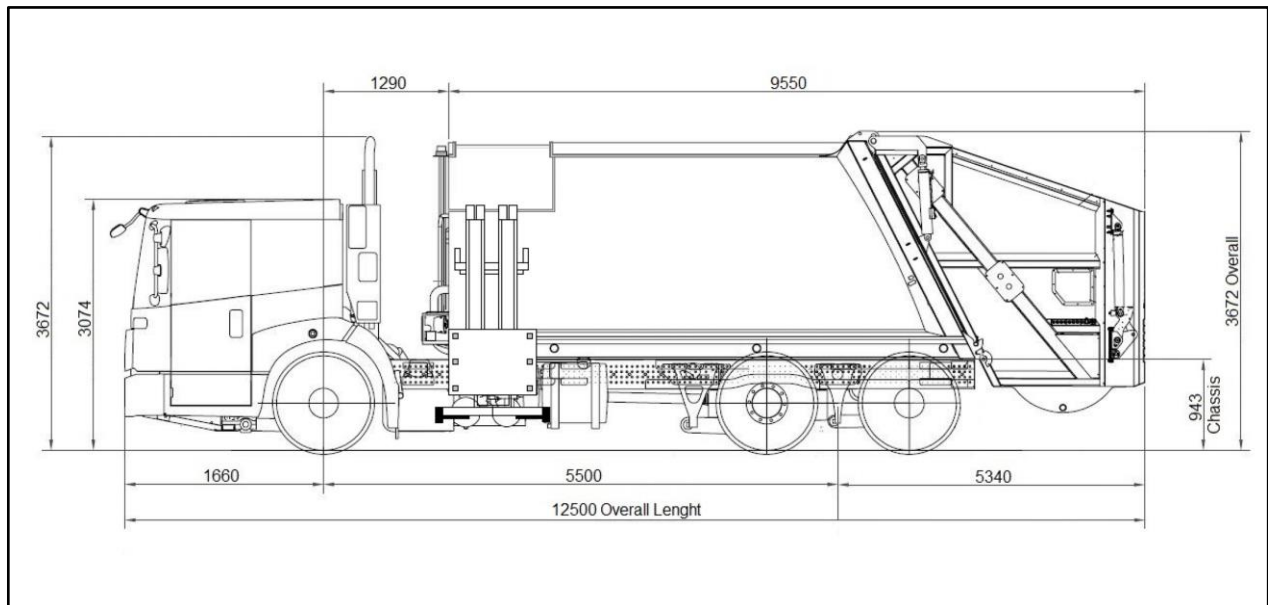
**Figure 7: Scaled Diagram of the Waste Storage Areas & Placement for Collection (Eastern End)**

## Waste Collection

The waste collection service for the development will be provided by Council.

The residents will be responsible for placing the MGB's on the kerbside (500mm apart) for collection on the required collection days (Recycling will be collected fortnightly).

The waste collection vehicle will enter the development via O'Connell Street and empty all of the developments MGB's. Once all the MGB's have been emptied and returned to the street kerbside via the sidearm bin lift waste vehicle, the vehicle will proceed to leave in a forward motion. **NOTE:** Refer to Swept Path Diagram Appendix B.



**Figure 8: Template of Penrith Councils 12.5m HRV Waste Collection Vehicle**



## Amenity

### Noise

The only noise generated from the waste management at the property will be that of the MGB's being emptied and being wheeled to / from the kerbside. Any other noise related to the waste management will be kept to a minimum.

### Ventilation

The waste bin area will have ample ventilation.

### Security/Communication Strategy

All MGB's will be secured within the rear yard of each property.

All residents will receive detailed documentation detailing all necessary requirements for safe waste management and handling including all relevant contact information.

### Cleaning Facilities

The occupants will be responsible for keeping the MGB's clean.

**NOTE:** It is recommended that the waste area consist of; **(1)** Impervious coated/treated ground surface, ensuring the ground is graded to the sewer (100 mm diameter) floor drain outlet. **(2)** Tap and hose (hose cock must be protected from the waste containers) for use of cleaning the MGBs and waste area. **(3)** Waste bins within a screened area.

### Prevention of Vermin

The occupants will be advised to not overfill the bins so that the lids are closed at all times. It is suggested to place rat traps in the corners of the waste storage areas.

## **Miscellaneous**

### **Communal Composting Facility**

No consideration has been given to a communal composting facility. Residents wanting to compost some of their rubbish will be required to do so individually.

### **Dwelling Food Waste Storage**

All food scraps collected in the kitchen caddy (supplied by council) are to be emptied in the FOGO bin and turned into compost for our local parks, gardens, and sports fields.

### **Green Waste/Food Waste**

Garden and Food Waste will be placed in the Organic FOGO MGB.

### **Bulky Hard Waste**

If hard waste collection is required, the occupants should contact a council directly to organise collection.

Items which are too bulky, too heavy or too big to be collected in your bins may be collected as a Bulky Waste Collection. Council provides its residents with up to 4 collections every year. Each collection must be no more than 2 cubic metres in size, which is roughly the carrying capacity of a standard box trailer. A collection can be arranged for garden vegetation, whitegoods, mattresses, or general household items.

### **E-Waste**

Recyclable electronic goods include batteries, equipment containing printed circuit boards, computers, televisions, fluorescent tubes and smoke detectors. E-Waste will be placed in impermeable surface containers and collected by a registered E-Waste Re-Processor as required.



# Appendix A – Floor Plan



## Appendix B - Swept Path Diagrams - 12.5m HRV

