

WALLACIA COUNTRY CLUB

CIVIL, STORMWATER & WSUD DEVELOPMENT APPLICATION



LOCALITY AERIAL
NOT TO SCALE

SOURCE : GOOGLE EARTH

DRAWING SCHEDULE		
DRG. No.	DRAWING TITLE	REV.
C1.00 Arrangement and Overview Plans		
C1.01	Cover Sheet	3
C1.02	Specification Notes	2
C1.03	General Arrangement Plan Sheet 1 of 2	3
C1.04	General Arrangement Plan Sheet 2 of 2	3
C2.00 Sediment and Erosion Control		
C2.01	Sediment and Erosion Control Plan	2
C2.02	Sediment and Erosion Control Details	2
C6.00 Stormwater Drainage		
C6.01	Stormwater Layout Plan Sheet 1 of 2	4
C6.02	Stormwater Layout Plan Sheet 2 of 2	4
C6.03	Stormwater Catchment Plan	3
C6.04	Pit Schedule	3
C6.05	On Site Detention (OSD) Tank Plan	3
C6.06	On Site Detention (OSD) Tank Sections	3
C6.07	Stormwater Drainage Details	2

Plot Date: 10/07/2020 09:55:07:14; Logfile: mator; Cad File: T:\6975000\Design\A4\2400\DWG\Civil\Design\Civil_2021_01_Cover_Sheet.dwg

CLIENT
St Johns Park
Bowling Club

PROJECT MANAGER

ARCHITECT
Axilarchitects
Architecture | Interior Design | Planning

Warren Smith & Partners

Warren Smith & Partners Pty Ltd
Level 9, 233 Castlereagh Street, Sydney 2000 NSW Australia
02 9299 1312 wsp@warrensmith.com.au
www.warrensmith.com.au ABN 36 300 430 126

CONSULTING ENGINEERS

- Hydraulic Services ■ Fire Services ■ Civil Services
- Sydney Water Accredited Water Servicing Co-ordinator and Designer



Serving the Construction Industry since 1981.

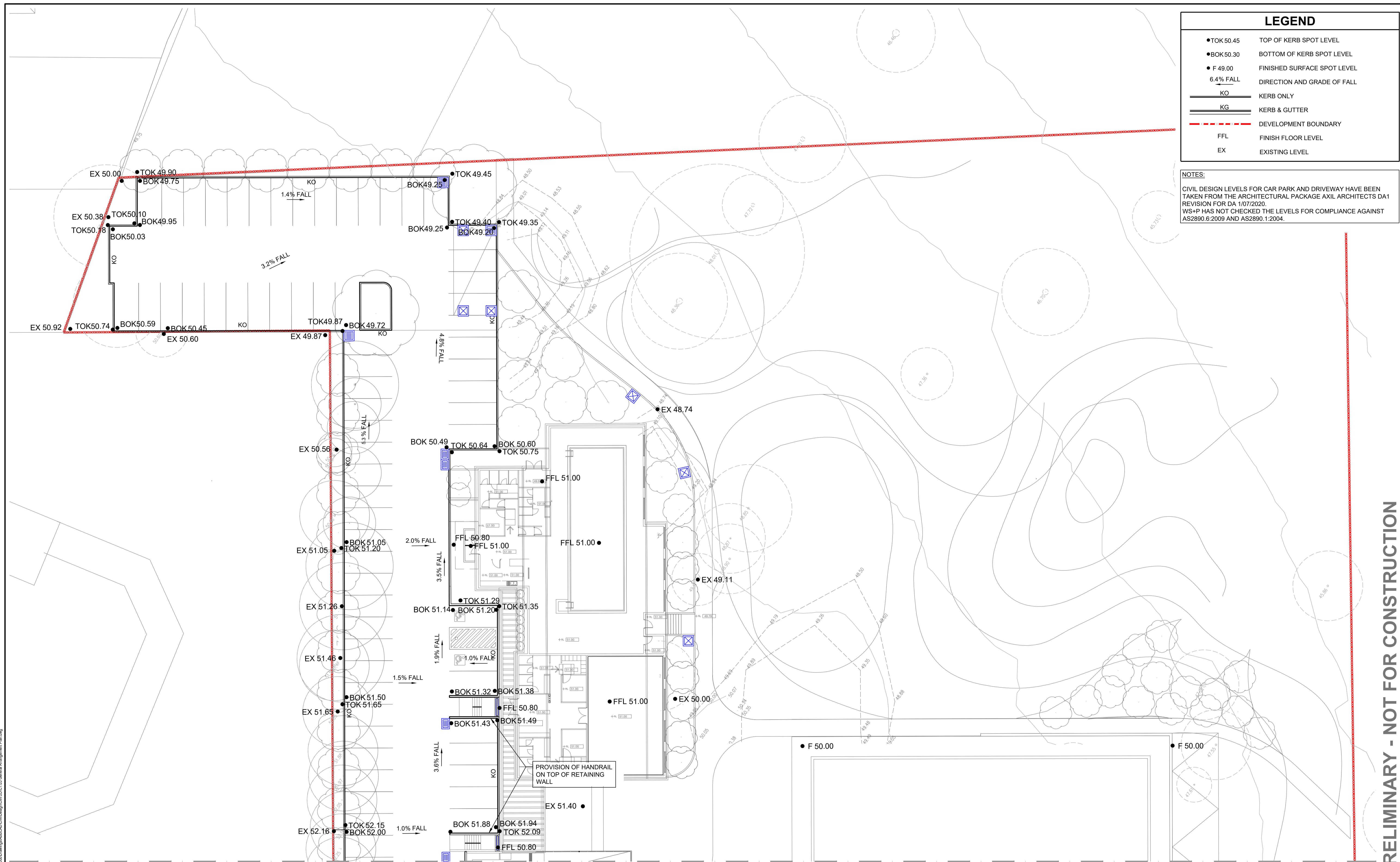
TITLE
COVER SHEET

SCALE AS SHOWN	DRAWN M.Cz.	DESIGNED M.Cz.	CHECKED N.Q.	APPROVED M.C.
JOB No. 6675000	DRAWING No. C1.01		ISSUE 3	
DATE DEC 2019	STATUS DEVELOPMENT APPLICATION			

Plot Date

LEGEND	
● TOK 50.45	TOP OF KERB SPOT LEVEL
● BOK 50.30	BOTTOM OF KERB SPOT LEVEL
● F 49.00	FINISHED SURFACE SPOT LEVEL
6.4% FALL	DIRECTION AND GRADE OF FALL
KO	KERB ONLY
KG	KERB & GUTTER
---	DEVELOPMENT BOUNDARY
FFL	FINISH FLOOR LEVEL
EX	EXISTING LEVEL

NOTES:
 CIVIL DESIGN LEVELS FOR CAR PARK AND DRIVEWAY HAVE BEEN TAKEN FROM THE ARCHITECTURAL PACKAGE AXIL ARCHITECTS DA1 REVISION FOR DA 1/07/2020.
 WS+P HAS NOT CHECKED THE LEVELS FOR COMPLIANCE AGAINST AS2890.6:2009 AND AS2890.1:2004.

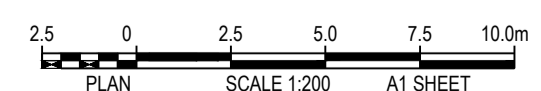
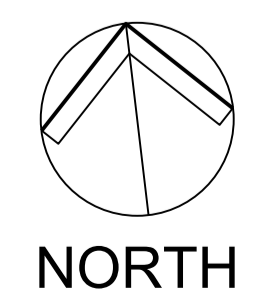


FOR CONTINUATION REFER DRG C1.04

PRELIMINARY - NOT FOR CONSTRUCTION

Job: K4675000_TB_A14_K4675000_S11_Genarr_K4675000_A14_Genarr_K4675000_A14_Genarr_K4675000_A14_Genarr_K4675000_A14_Genarr_K4675000_A14_Genarr_K4675000_A14_Genarr
 Proj: K4675000_TB_A14_K4675000_S11_Genarr_K4675000_A14_Genarr_K4675000_A14_Genarr_K4675000_A14_Genarr_K4675000_A14_Genarr_K4675000_A14_Genarr_K4675000_A14_Genarr
 Rev: 1
 Date: 30/07/2020 15:59:17
 User: mcz
 Path: \\s:\projects\4675000\4675000_TB_A14_K4675000_S11_Genarr_K4675000_A14_Genarr_K4675000_A14_Genarr_K4675000_A14_Genarr_K4675000_A14_Genarr_K4675000_A14_Genarr_K4675000_A14_Genarr

DO NOT SCALE FROM DRAWINGS, CHECK & VERIFY ALL DIMENSIONS & LEVELS BEFORE COMMENCEMENT OF ANY WORK.
 THIS DRAWING IS NOT TO BE COPIED IN PART OR WHOLE WITHOUT WRITTEN PERMISSION FROM WARREN SMITH AND PARTNERS.



REVISION	AMENDMENT	DATE	REVISION	AMENDMENT	DATE
1	DRAFT DEVELOPMENT APPLICATION	26/11/19			
2	DEVELOPMENT APPLICATION	06/12/19			
3	DEVELOPMENT APPLICATION	30/07/20			



PROJECT
WALLACIA COUNTRY CLUB

PREPARED BY
Warren Smith & Partners
 Level 9, 233 Castlereagh St, Sydney 2000 NSW Australia
 02 9299 1312 wsp@warrensmith.com.au
 www.warrensmith.com.au ABN 36 300 430 126

CONSULTING ENGINEERS
 Hydraulic Services Fire Services
 Civil Services Sydney Water Accredited Water Servicing Co-ordinator and Designer

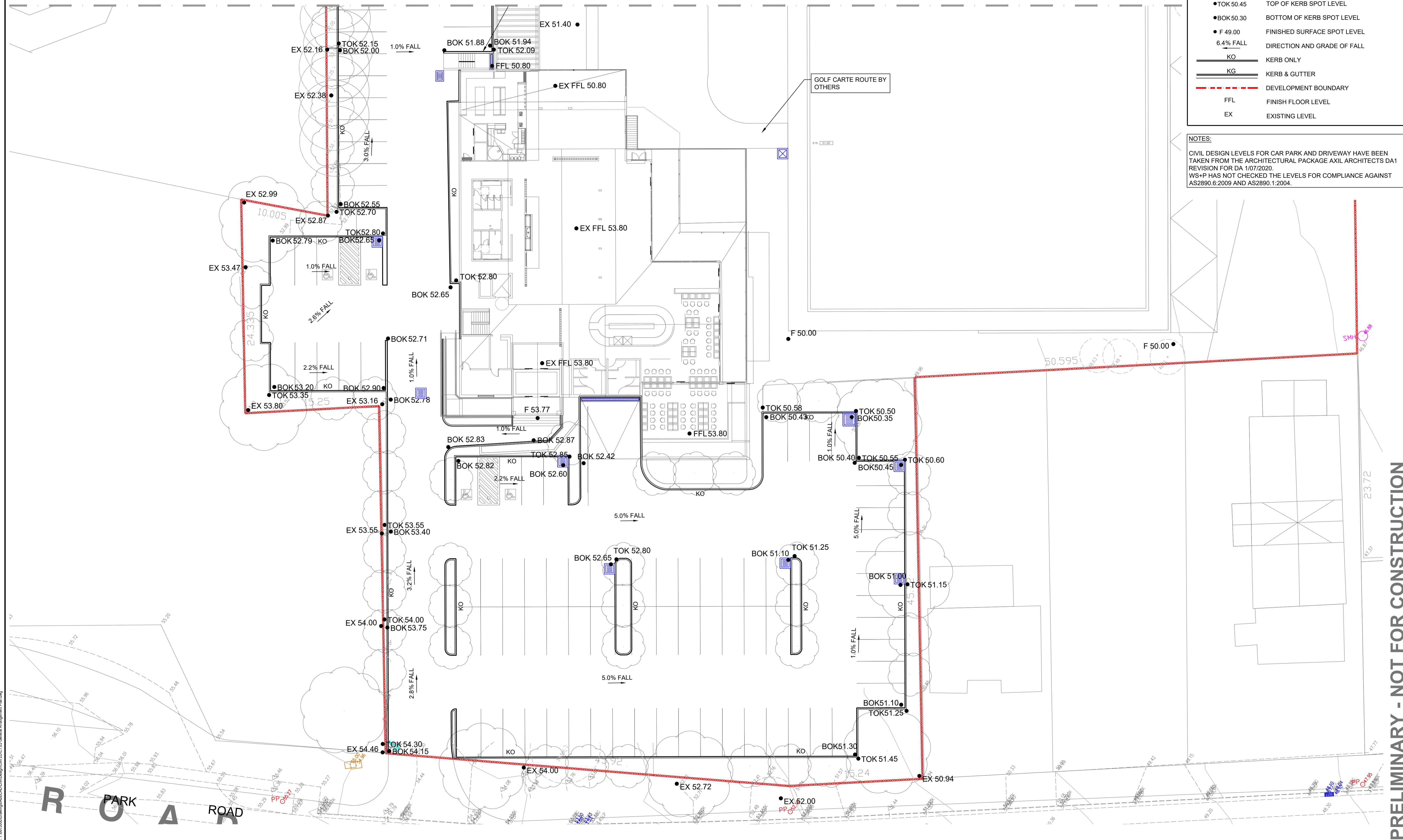
SERVING THE CONSTRUCTION INDUSTRY SINCE 1981.

GENERAL ARRANGEMENT PLAN SHEET 1 OF 2				
SCALE AS SHOWN	DRAWN M.Cz.	DESIGNED M.Cz.	CHECKED N.Q.	APPROVED M.C.
JOB No. 6675000	DRAWING No. C1.03	ISSUE 3		
DATE DEC 2019	STATUS DEVELOPMENT APPLICATION			

FOR CONTINUATION REFER DRG C1.03

LEGEND	
● TOK 50.45	TOP OF KERB SPOT LEVEL
● BOK 50.30	BOTTOM OF KERB SPOT LEVEL
● F 49.00	FINISHED SURFACE SPOT LEVEL
6.4% FALL	DIRECTION AND GRADE OF FALL
KO	KERB ONLY
KG	KERB & GUTTER
---	DEVELOPMENT BOUNDARY
FFL	FINISH FLOOR LEVEL
EX	EXISTING LEVEL

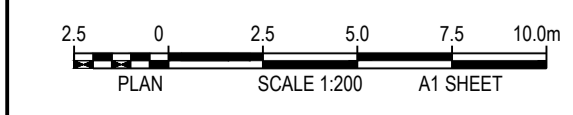
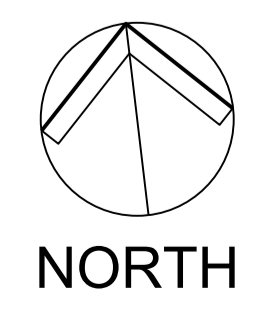
NOTES:
 CIVIL DESIGN LEVELS FOR CAR PARK AND DRIVEWAY HAVE BEEN TAKEN FROM THE ARCHITECTURAL PACKAGE AXIL ARCHITECTS DA1 REVISION FOR DA 1/07/2020.
 WS+P HAS NOT CHECKED THE LEVELS FOR COMPLIANCE AGAINST AS2890.6:2009 AND AS2890.1:2004.



PRELIMINARY - NOT FOR CONSTRUCTION

Title: K4675000 TB, A14, K4675000 SU, Consent: K4675000 AR, Code: Code Book B, Consent: K4675000 AR, Proposed Pool L, Consent: K4675000 AR, County: Chisholm, County Council: Council of Councils, K4675000 SU, Layout
 File Date: 30/07/2020 15:22:32, Log Name: mcmcmcm, Cad File: 1:66750000.dwg, Project: WALLACIA COUNTRY CLUB, Drawing: GENERAL ARRANGEMENT PLAN SHEET 2 OF 2

DO NOT SCALE FROM DRAWINGS, CHECK & VERIFY ALL DIMENSIONS & LEVELS BEFORE COMMENCEMENT OF ANY WORK.
 THIS DRAWING IS NOT TO BE COPIED IN PART OR WHOLE WITHOUT WRITTEN PERMISSION FROM WARREN SMITH AND PARTNERS.



REVISION	AMENDMENT	DATE	REVISION	AMENDMENT	DATE
1	DRAFT DEVELOPMENT APPLICATION	26/11/19			
2	DEVELOPMENT APPLICATION	06/12/19			
3	DEVELOPMENT APPLICATION	30/07/20			

CLIENT

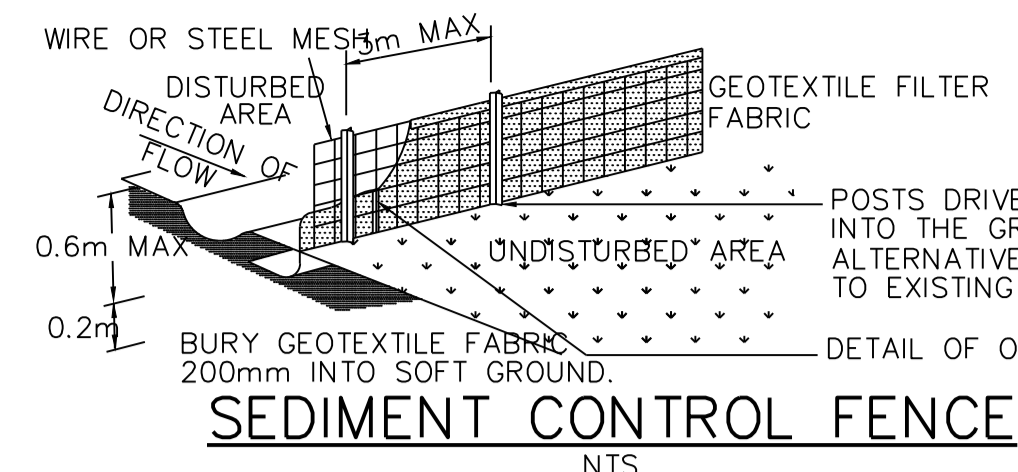
 PROJECT
WALLACIA COUNTRY CLUB

PREPARED BY

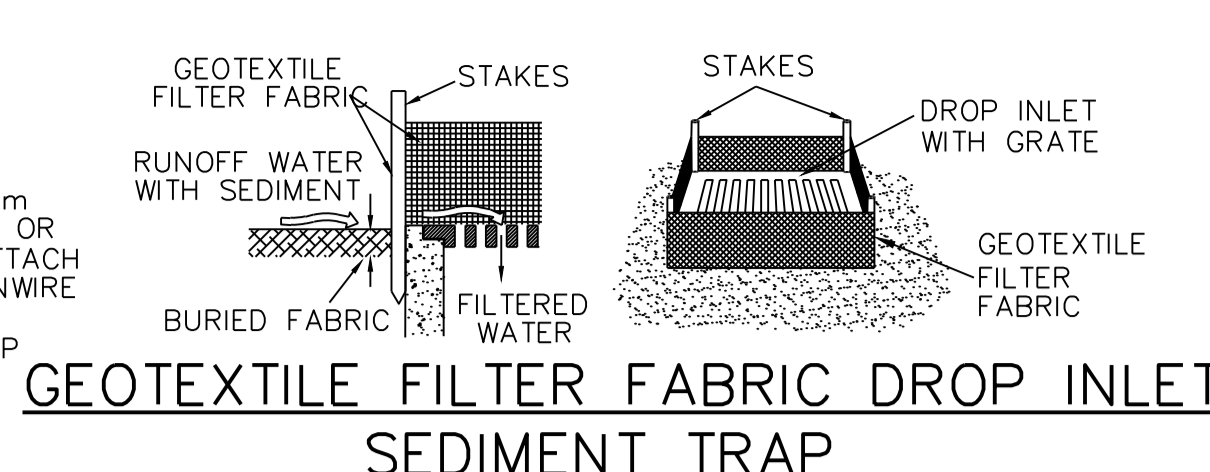
 Warren Smith & Partners Pty Ltd
 Level 9, 233 Castlereagh St, Sydney 2000 NSW Australia
 02 9299 1312, wsp@warrensmith.com.au, www.warrensmith.com.au, ABN 36 300 430 126
 CONSULTING ENGINEERS
 Hydraulic Services, Fire Services, Civil Services, Sydney Water Accredited Water Servicing Co-ordinator and Designer

 SERVING THE CONSTRUCTION INDUSTRY SINCE 1981.

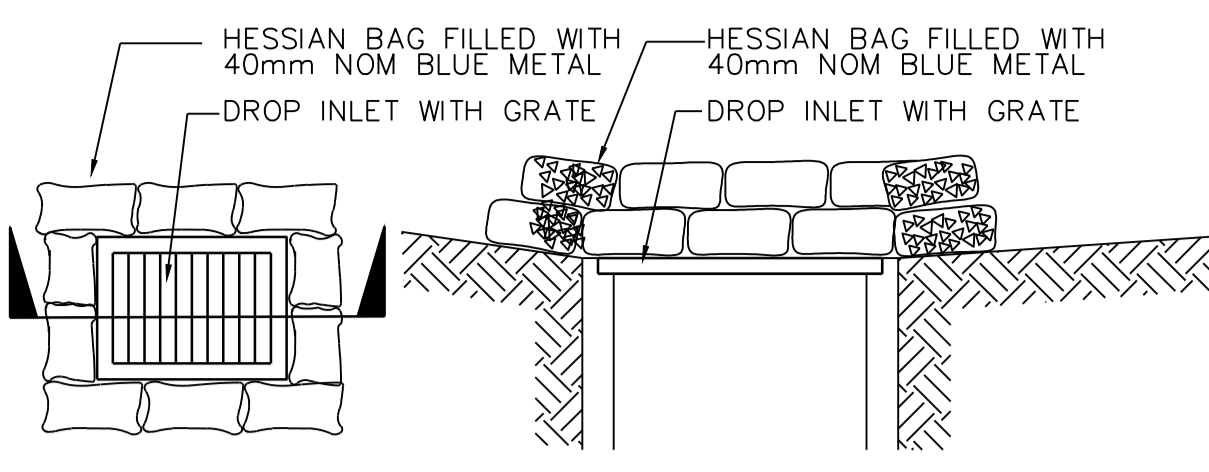
GENERAL ARRANGEMENT PLAN SHEET 2 OF 2				
SCALE	DRAWN	DESIGNED	CHECKED	APPROVED
AS SHOWN	M.Cz.	M.Cz.	N.Q.	M.C.
JOB No.	DRAWING No.		ISSUE	
6675000	C1.04		3	
DATE	STATUS			
DEC 2019	DEVELOPMENT APPLICATION			



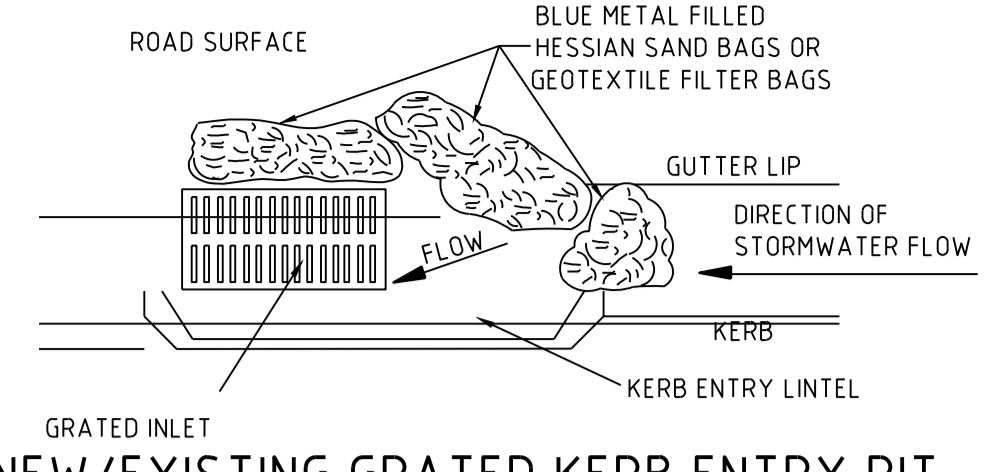
SEDIMENT CONTROL FENCE
NTS



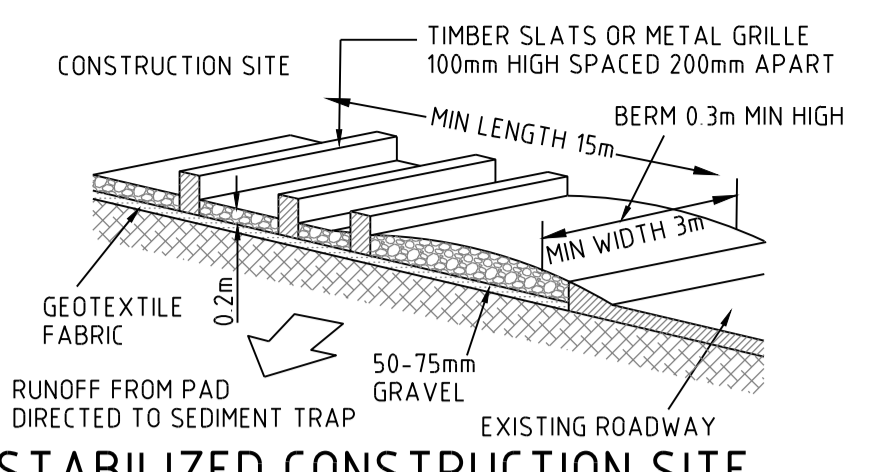
GEOTEXTILE FILTER FABRIC DROP INLET
NTS



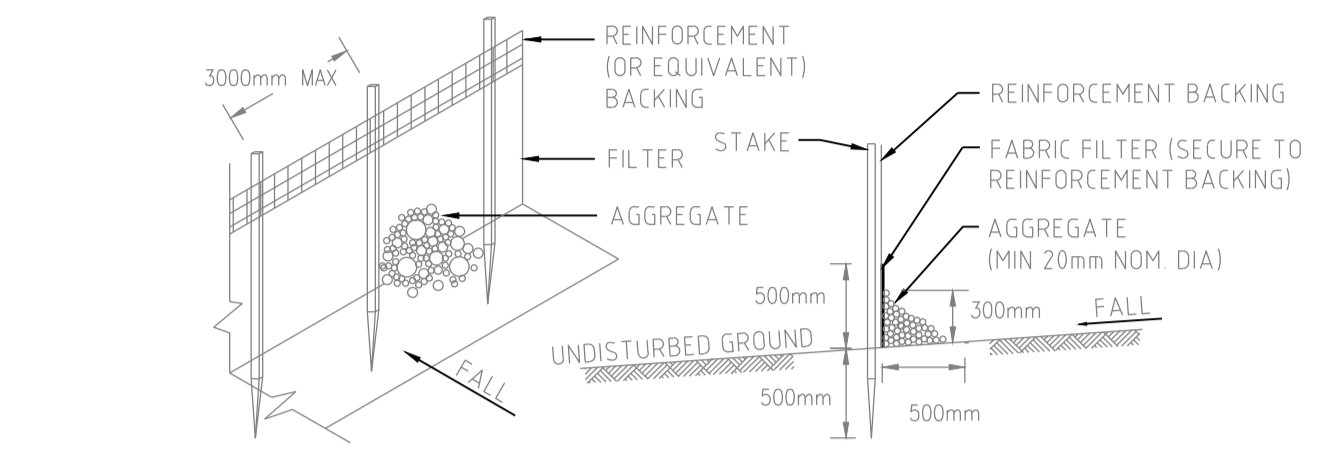
HESSIAN BAG DROP INLET
NTS



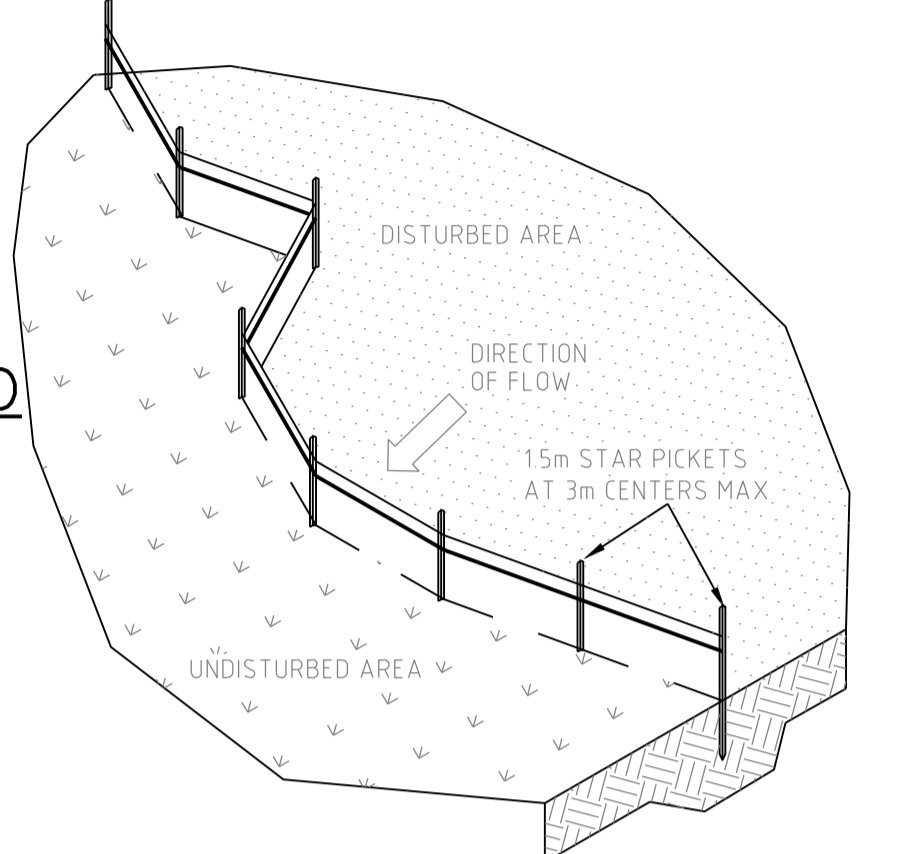
NEW/EXISTING GRATED KERB ENTRY PIT
NTS



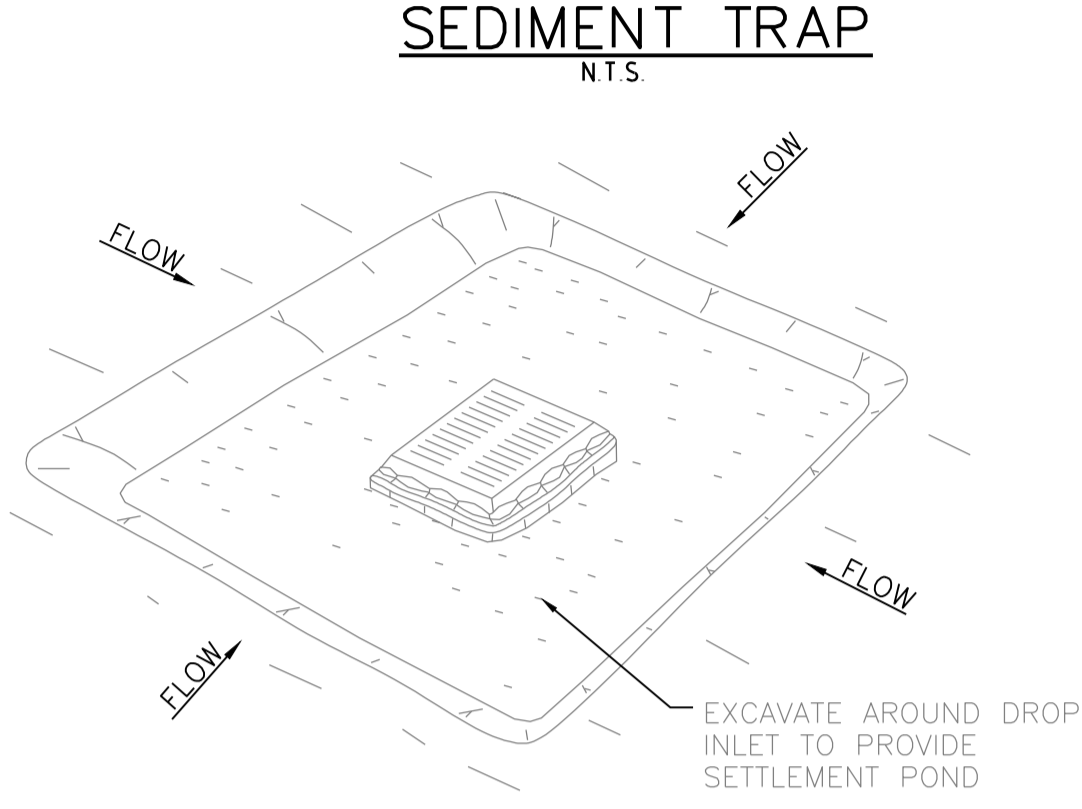
STABILIZED CONSTRUCTION SITE
NTS



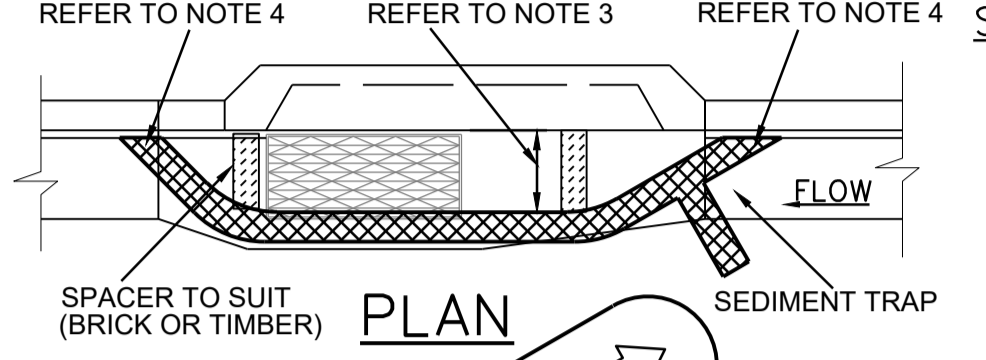
SEDIMENT FENCE DETAIL FOR ROCKY GROUND
NTS



SEDIMENT FENCE LAYOUT PLAN
NTS



EXCAVATED SEDIMENT TRAP
NTS



GEOTEXTILE FILTER BAGS
NTS

SITE ENTRY/EXIT NOTES: -

1. ALL VEHICLE ENTRANCES & EXITS TO THE CONSTRUCTION SITE MUST BE STABILIZED TO PREVENT THEM BECOMING A SOURCE OF SEDIMENT, BY PROVIDING A VEHICLE SHAKE AREA. THIS MAY CONSIST OF A TIMBER, CONCRETE OR STEEL SHAKER GRID OR RUBBLE AREA.
2. THE VEHICLE EXIT AREA IS TO BE MAINTAINED IN A CLEAN & SERVICEABLE CONDITION DURING THE TOTAL TIME OF USAGE.
3. ANY UNSEALED ROAD BETWEEN THE DEVICE AND COUNCILS ROADWAY IS TO BE TOPPED WITH 100mm THICK, 40mm NOMINAL SIZE AGGREGATE.
4. PUBLIC ROADS MUST BE KEPT FREE OF DIRT AND MUD. SEDIMENT TRACKED ONTO THE PUBLIC ROADWAY BY VEHICLES LEAVING THE CONSTRUCTION SITE IS TO BE SWEEPED UP IMMEDIATELY.
5. FENCES SHOULD BE ERRECTED TO ENSURE VEHICLES CAN NOT BYPASS THE STABILIZED ACCESS POINTS, UNLESS COMING FROM A STABILIZED AREA.

SEDIMENT FENCE NOTES: -

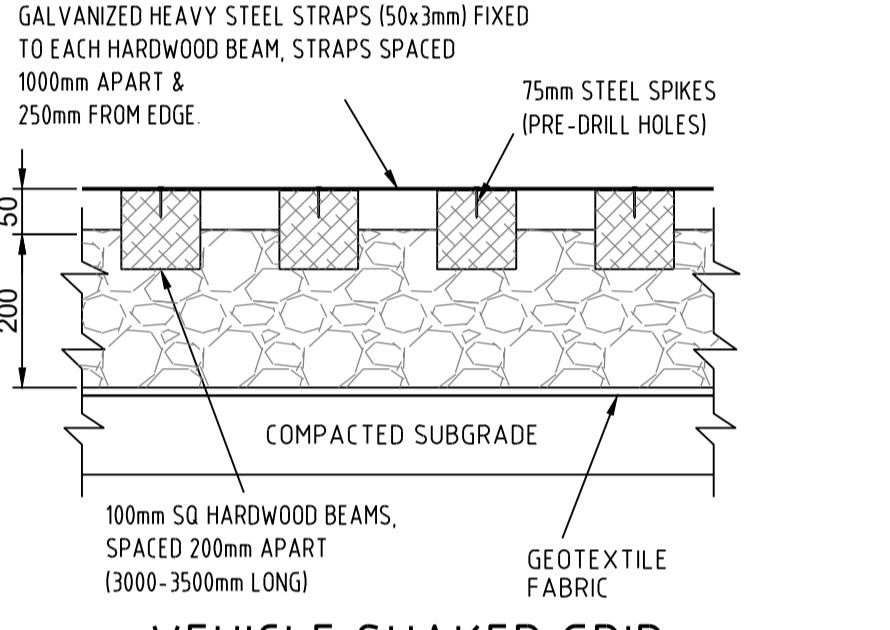
1. CONSTRUCT SEDIMENT FENCE AS CLOSE AS POSSIBLE TO PARALLEL TO THE CONTOURS OF THE SITE OR AT THE TOE OF A SLOPE.
2. DRIVE 1.5 METRE LONG STAR PICKETS INTO GROUND SUFFICIENT TO PROVIDE RIGID SUPPORT, 3 METERS APART. WHERE THERE IS INSUFFICIENT SOIL DEPTH OVER ROCK, HOLES ARE TO BE DRILLED INTO ROCK TO ACCEPT THE STAR PICKETS.
3. ON SOFT GROUND MATERIALS, DIG A 150mm DEEP TRENCH ALONG THE UPSLOPE LINE OF THE FENCE FOR THE BOTTOM OF THE FABRIC TO BE ENTRENCHED.
4. BACKFILL TRENCH OVER BASE OF FABRIC & COMPACT.
5. FIX SELF-SUPPORTING GEOTEXTILE TO UPSLOPE SIDE OF POSTS WITH WIRE TIES OR AS RECOMMENDED BY THE GEOTEXTILE MANUFACTURER. USE A REINFORCEMENT BACKING WITH NON SELF-SUPPORTING GEOTEXTILE FABRIC.
6. JOIN SECTIONS OF FABRIC AT A SUPPORT POST WITH A 150mm OVERLAP.
7. ON HARD OR ROCKY GROUND, SMOOTH A 500mm WIDE STRIP UPSLOPE OF THE FENCE LINE. TURN THE BOTTOM 500mm OF THE FABRIC UPSLOPE AND ANCHOR IN PLACE WITH SUITABLE AGGREGATE.
8. WHERE A SEDIMENT FENCE IS CONSTRUCTED DOWN SLOPE FROM A DISTURBED BATTER THE FENCE SHOULD BE LOCATED 1.5 TO 2.0 METERS DOWN SLOPE FROM THE TOE OF THE BATTER.

EXCAVATED SEDIMENT TRAP NOTES: -

1. REMOVE THE SEDIMENT WHEN IT HAS ACCUMULATED TO HALF THE DESIGN DEPTH OF THE TRAP AND RESTORE THE TRAP TO ITS ORIGINAL DIMENSIONS.
2. PROVIDE 50 cu.m/ha OF SEDIMENT STORAGE VOLUME.
3. REFER TO THE MAINTENANCE REQUIREMENTS.

SEDIMENT BARRIER FOR PITS & PIPES, NOTES: -

1. SLEEVES ARE TO BE MADE FROM GEOTEXTILE FABRIC LONGER THEN THE LENGTH OF THE INLET PIT.
2. FILL SLEEVE WITH 5 OR 10mm CLEAN GRAVEL.
3. PLACE THE SLEEVE AT THE OPENING OF THE KERB INLET LEAVING A 100mm GAP TO ACT AS AN EMERGENCY OVERFLOW.
4. SLEEVE MUST BE PLACED AGAINST THE KERB TO PREVENT BYPASS.
5. FIT SLEEVE TO ALL INLETS DOWNSTREAM OF THE WORKS.
6. FOR DRAINAGE WORKS FIT GEOTEXTILE FABRIC OR GEO BAGS TO UPSLOPE FACE OF ALL OPEN PIPES.
7. MAINTAIN AN OPENING AT THE TOP OF THE PIPE OF 1/3 OF THE PIPE DIAMETER.
8. THE FILTERS ARE TO BE CLEANED AND MAINTAINED DAILY.
9. ALL CARE SHOULD BE TAKEN TO MINIMIZE SEDIMENT REACHING THE STORMWATER SYSTEM BY MINIMIZING EXCAVATION WORKS AND PREVENTING EXCESS WATER FLOW THROUGH WORKS.



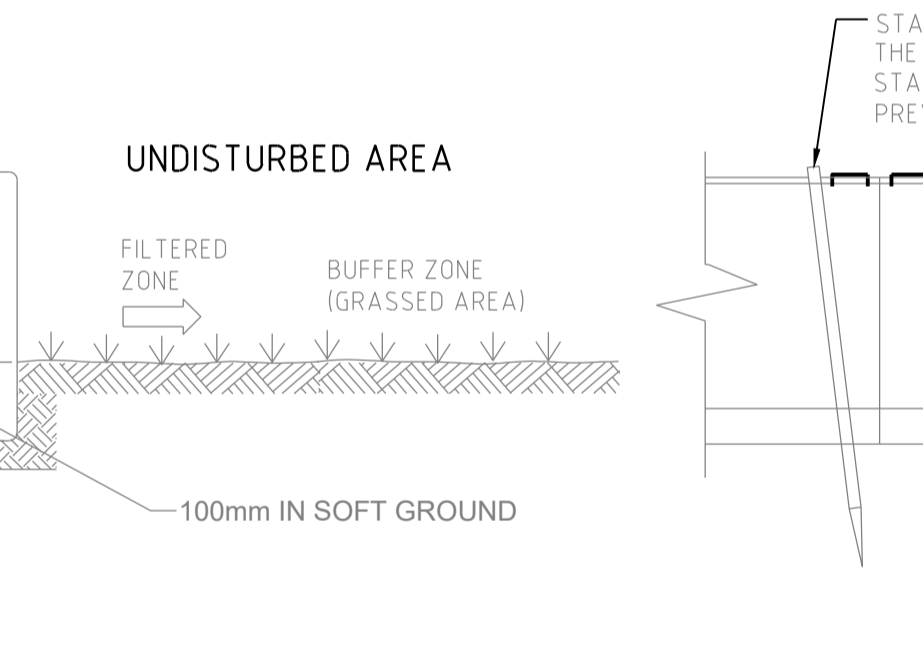
VEHICLE SHAKER GRID
NTS

SITE ENTRY/EXIT CONSTRUCTION NOTES: -

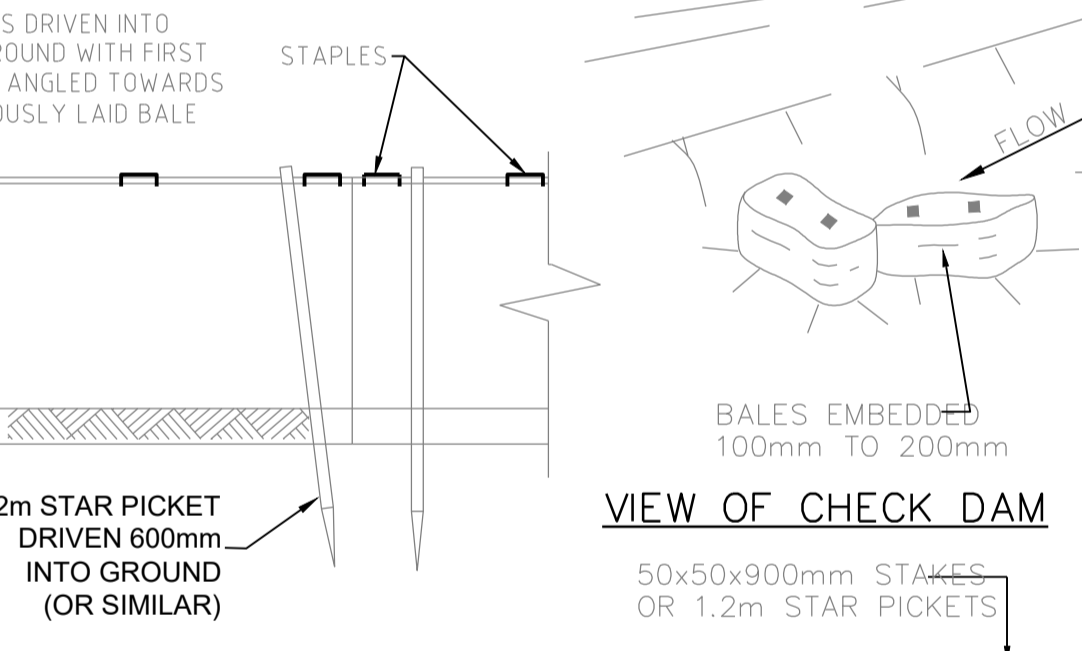
1. STRIP TOP SOIL & LEVEL SITE. PROVIDE CATCH DRAIN AT SIDES TO DIRECT RUNOFF WATER TO SEDIMENT TRAPS.
2. COMPACT SUBGRADE AND REMOVE ANY HIGH POINTS.
3. COVER AREA WITH GEOTEXTILE FABRIC. THIS MAY BE WOVEN OR NEEDLE PUNCHED PRODUCT WITH A MINIMUM CBR BURST STRENGTH (AS3706.4-90) OF 2500 N.
4. CONSTRUCT 200mm THICK RUBBLE PAD OVER GEOTEXTILE USING ROAD BASE OR 30-40mm AGGREGATE. MINIMUM LENGTH 15 METRES OR TO BUILDING ALIGNMENT. MINIMUM WIDTH 3 METRES. CONSTRUCT 300mm HIGH HUMPS IMMEDIATELY WITHIN BOUNDARY TO DIVERT WATER TO A SEDIMENT TRAP.
5. WHERE GRIDS ARE USED FIRST CONSTRUCT A 150 THICK PAD OVER GEOTEXTILE FABRIC. LEVEL THIS IN BOTH DIRECTIONS. LOWER GRID ON TO THE PREPARED BASE AND ENSURE THAT NO PART IS SITTING ON ANY HIGH POINTS. BACKFILL THE SPACES BETWEEN THE GRIDS TO WITHIN 50mm OF THE TOP.
6. PROVIDE RAMPS AT ENDS AND SIDE OF GRIDS. IF DEPRESSIONS OCCUR IN THE RAMPS DURING USE. ADD ADDITIONAL MATERIAL.

STRAW BALE NOTES: -

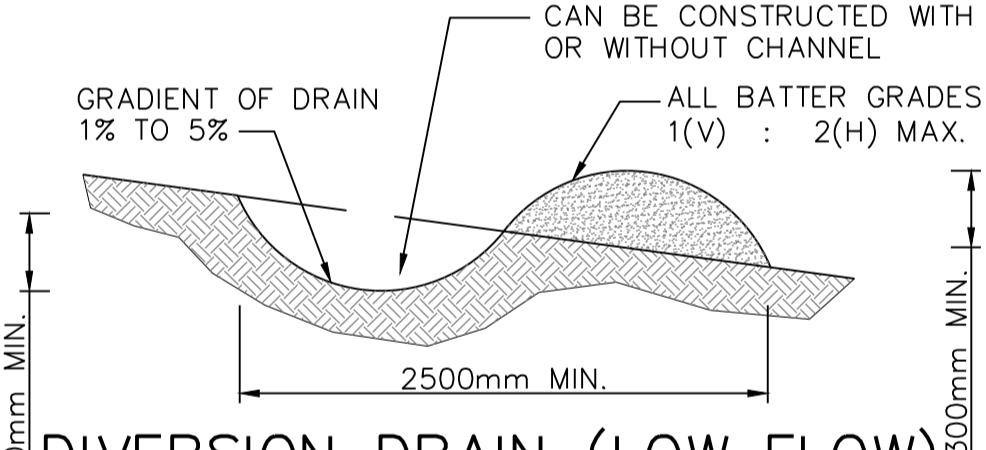
1. CONSTRUCT STRAW BALE FILTER AS CLOSE AS POSSIBLE TO PARALLEL TO THE CONTOURS OF THE SITE OR AT THE TOE OF A SLOPE.
2. PLACE BALES LENGTHWISE IN A ROW WITH ENDS TIGHTLY ABUTTING. USE STRAW TO FILL ANY GAPS BETWEEN BALES. STRAWS TO BE PLACED PARALLEL TO GROUND.
3. MAXIMUM HEIGHT OF FILTER IS ONE BALE.
4. ON SOFT MATERIALS, EMBED EACH BALE IN THE GROUND 75mm TO 100mm AND ANCHOR WITH TWO 1.2 METRE STAR PICKETS. ANGLE THE FIRST STAKE IN EACH BALE TOWARDS THE PREVIOUSLY LAID BALE. DRIVE STAKES 600mm INTO THE GROUND AND FLUSH WITH THE TOP OF THE BALES.
5. WHERE A STRAW BALE FILTER IS CONSTRUCTED DOWN SLOPE FROM A DISTURBED BATTER THE BALES SHOULD BE LOCATED 1.5 TO 2.0 METERS DOWN SLOPE FROM THE TOE OF THE BATTER.
6. WHERE REQUIRED WRAP GEOTEXTILE FILTER FABRIC AROUND BALES AND STAPLE IN POSITION.



TYPICAL STRAW BALE SECTION
NTS



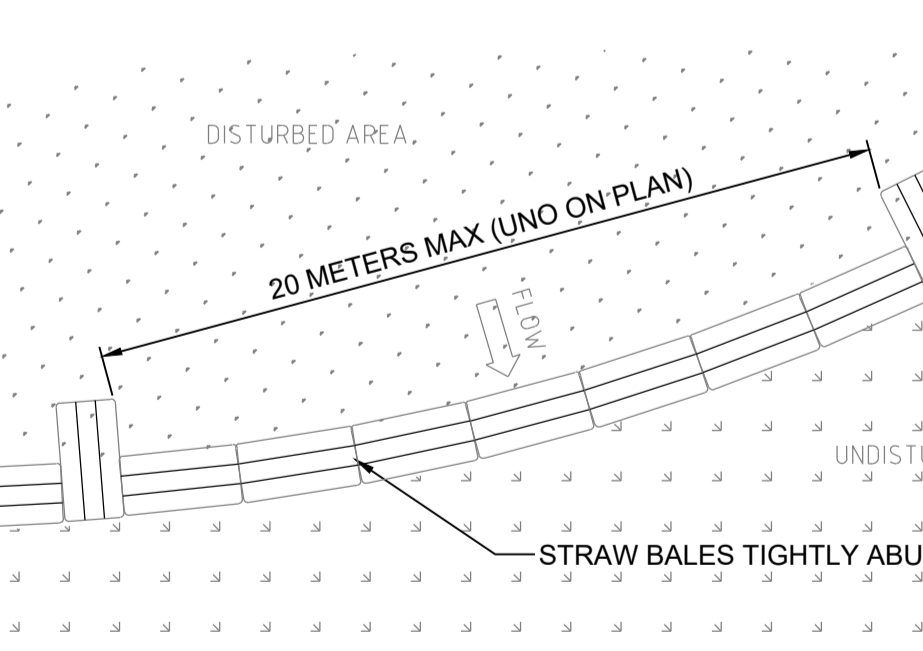
TYPICAL STRAW BALE DETAIL
NTS



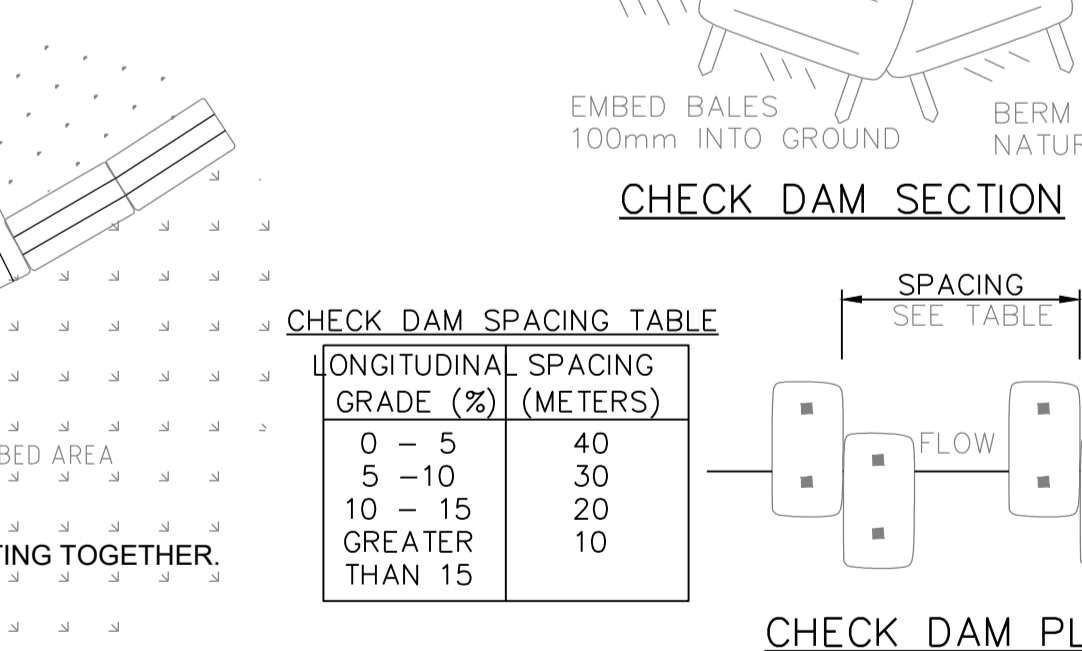
DIVERSION DRAIN (LOW FLOW)
NTS

DIVERSION DRAIN NOTES: -

1. CONSTRUCT WITH GRADIENT OF 1 PER CENT TO 5 PER CENT.
2. AVOID REMOVING TREES AND SHRUBS IF POSSIBLE.
3. DRAINS TO BE OF CIRCULAR, PARABOLIC OR TRAPEZOIDAL CROSS SECTION NOT V-SHAPED.
4. EARTH BANKS TO BE ADEQUATELY COMPACTED IN ORDER TO PREVENT FAILURE.
5. PERMANENT OR TEMPORARY STABILIZATION OF THE EARTH BANK TO BE COMPLETED WITHIN 10 DAYS OF CONSTRUCTION.
6. ALL OUTLETS FROM DISTURBED LANDS ARE TO FEED INTO A SEDIMENT BASIN OR SIMILAR.
7. DISCHARGE RUN OFF COLLECTED FROM UNDISTURBED LANDS ONTO EITHER A STABILIZED OR AN UNDISTURBED DISPOSAL SITE WITHIN THE SAME SUBCATCHMENT AREA FROM WHICH THE WATER ORIGINATED.
8. COMPACT BANK WITH A SUITABLE IMPLEMENT IN SITUATIONS WHERE THEY ARE REQUIRED TO FUNCTION FOR MORE THAN FIVE DAYS.
9. EARTH BANKS TO BE FREE OF PROJECTIONS OR OTHER IRREGULARITIES THAT WILL IMPEDE NORMAL FLOW.

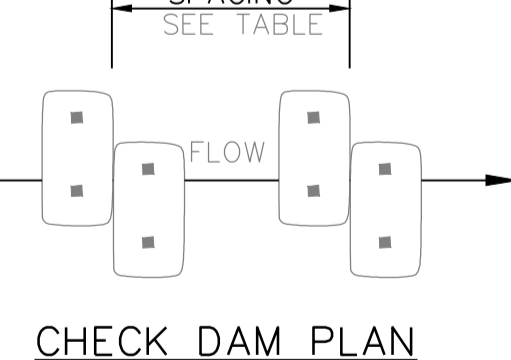


TYPICAL STRAW BALE LAYOUT PLAN
NTS



STRAW BALE CHECK DAM DETAILS
NTS

LONGITUDINAL GRADE (%)	SPACING (METERS)
0 - 5	40
5 - 10	30
10 - 15	20
GREATER THAN 15	10

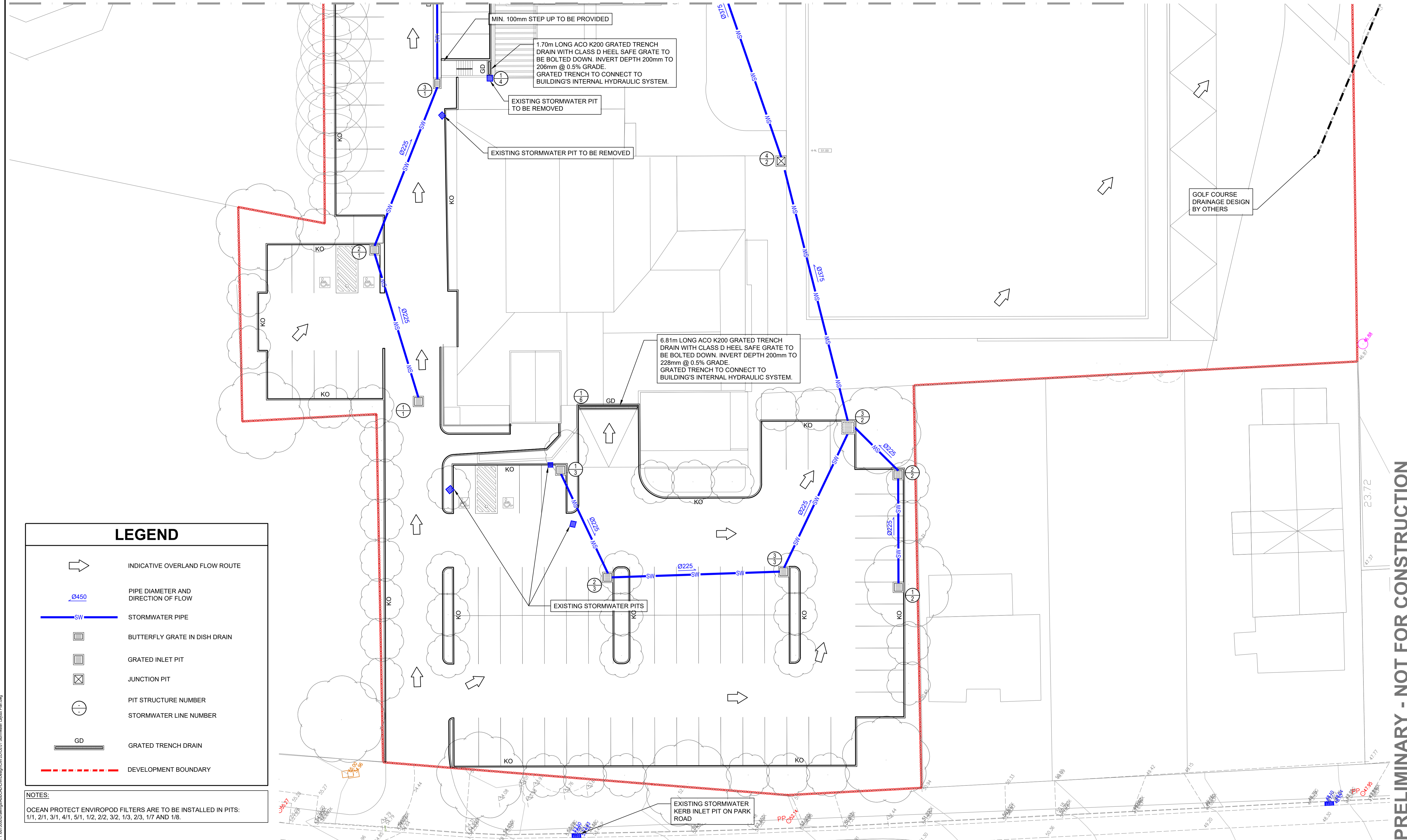


CHECK DAM PLAN
NTS

PRELIMINARY - NOT FOR CONSTRUCTION

<p>DO NOT SCALE FROM DRAWINGS. CHECK & VERIFY ALL DIMENSIONS & LEVELS BEFORE COMMENCEMENT OF ANY WORK.</p> <p>THIS DRAWING IS NOT TO BE COPIED IN PART OR WHOLE WITHOUT WRITTEN PERMISSION FROM WARREN SMITH AND PARTNERS.</p>	<p>REVISION</p> <table border="1"> <thead> <tr> <th>REVISION</th> <th>AMENDMENT</th> <th>DATE</th> <th>REVISION</th> <th>AMENDMENT</th> <th>DATE</th> </tr> </thead> <tbody> <tr> <td>1</td> <td>DRAFT DEVELOPMENT APPLICATION</td> <td>26/11/19</td> <td></td> <td></td> <td></td> </tr> <tr> <td>2</td> <td>DEVELOPMENT APPLICATION</td> <td>06/12/19</td> <td></td> <td></td> <td></td> </tr> </tbody> </table>	REVISION	AMENDMENT	DATE	REVISION	AMENDMENT	DATE	1	DRAFT DEVELOPMENT APPLICATION	26/11/19				2	DEVELOPMENT APPLICATION	06/12/19				<p>CLIENT</p> <p>St Johns Park Bowling Club</p>	<p>PREPARED BY</p> <p>Warren Smith & Partners Level 9, 233 Castlereagh St, Sydney 2000 NSW Australia 02 9299 1312 wsp@warrensmith.com.au www.warrensmith.com.au ABN 36 300 430 126</p>	<p>TITLE</p> <p>SEDIMENT AND EROSION CONTROL DETAILS</p>
	REVISION	AMENDMENT	DATE	REVISION	AMENDMENT	DATE																
1	DRAFT DEVELOPMENT APPLICATION	26/11/19																				
2	DEVELOPMENT APPLICATION	06/12/19																				
<p>PROJECT</p> <p>WALLACIA COUNTRY CLUB</p>	<p>CONSULTING ENGINEERS</p> <p>Hydraulic Services Fire Services Civil Services Sydney Water Accredited Water Servicing Co-ordinator and Designer</p> <p>GCC SERVING THE CONSTRUCTION INDUSTRY SINCE 1981.</p>	<table border="1"> <thead> <tr> <th>SCALE</th> <th>DRAWN</th> <th>DESIGNED</th> <th>CHECKED</th> <th>APPROVED</th> </tr> </thead> <tbody> <tr> <td>AS SHOWN</td> <td>M.Cz.</td> <td>M.Cz.</td> <td>N.Q.</td> <td>M.C.</td> </tr> </tbody> </table> <p>JOB No. 6675000 DRAWING No. C2.02 ISSUE 2</p> <p>DATE DEC 2019 STATUS DEVELOPMENT APPLICATION</p>	SCALE	DRAWN	DESIGNED	CHECKED	APPROVED	AS SHOWN	M.Cz.	M.Cz.	N.Q.	M.C.										
SCALE	DRAWN	DESIGNED	CHECKED	APPROVED																		
AS SHOWN	M.Cz.	M.Cz.	N.Q.	M.C.																		

FOR CONTINUATION REFER DRG C6.01



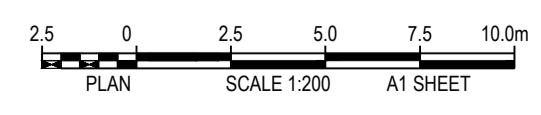
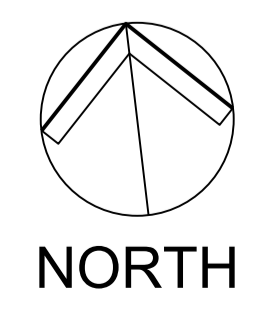
PRELIMINARY - NOT FOR CONSTRUCTION

LEGEND

- INDICATIVE OVERLAND FLOW ROUTE
- PIPE DIAMETER AND DIRECTION OF FLOW
- STORMWATER PIPE
- BUTTERFLY GRATE IN DISH DRAIN
- GRATED INLET PIT
- JUNCTION PIT
- PIT STRUCTURE NUMBER
- STORMWATER LINE NUMBER
- GRATED TRENCH DRAIN
- DEVELOPMENT BOUNDARY

NOTES:
 OCEAN PROTECT ENVIROPOD FILTERS ARE TO BE INSTALLED IN PITS:
 1/1, 2/1, 3/1, 4/1, 5/1, 1/2, 2/2, 3/2, 1/3, 2/3, 1/7 AND 1/8.

DO NOT SCALE FROM DRAWINGS, CHECK & VERIFY ALL DIMENSIONS & LEVELS BEFORE COMMENCEMENT OF ANY WORK.
 THIS DRAWING IS NOT TO BE COPIED IN PART OR WHOLE WITHOUT WRITTEN PERMISSION FROM WARREN SMITH AND PARTNERS.



REVISION	AMENDMENT	DATE	REVISION	AMENDMENT	DATE
1	DRAFT DEVELOPMENT APPLICATION	26/11/19			
2	DEVELOPMENT APPLICATION	06/12/19			
3	ISSUE FOR COORDINATION	03/07/20			
4	DEVELOPMENT APPLICATION	30/07/20			

CLIENT **St Johns Park Bowling Club**

PROJECT **WALLACIA COUNTRY CLUB**

PREPARED BY **Warren Smith & Partners**

Warren Smith & Partners Pty Ltd
 Level 9, 233 Castlereagh St, Sydney 2000 NSW Australia
 02 9299 1312 wsp@warrensmith.com.au
 www.warrensmith.com.au ABN 36 300 430 126

CONSULTING ENGINEERS
 ■ Hydraulic Services ■ Fire Services
 ■ Civil Services ■ Sydney Water Accredited Water Servicing Co-ordinator and Designer

SERVING THE CONSTRUCTION INDUSTRY SINCE 1981.

TITLE **STORMWATER LAYOUT PLAN SHEET 2 OF 2**

SCALE AS SHOWN	DRAWN M.Cz.	DESIGNED M.Cz.	CHECKED N.Q.	APPROVED M.C.
JOB No. 6675000	DRAWING No. C6.02	ISSUE 4		
DATE DEC 2019	STATUS DEVELOPMENT APPLICATION			

LEGEND	
	SITE BOUNDARY

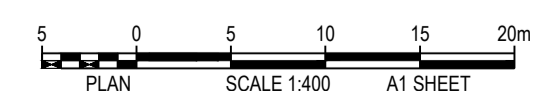
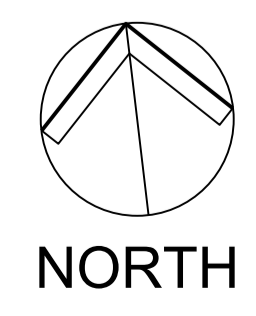


PRELIMINARY - NOT FOR CONSTRUCTION

Path: X:\6675000\18_A114_X6675000_S11_CatchmentPlan_X6675000_S11_Landscape_X6675000_S11_SitePlan
 File Date: 03/08/2020 15:52:36 Log Name: mczm0001 Cad File: 1/6675000\dwg\mgf\A114_CatchmentPlan.dwg

DO NOT SCALE FROM DRAWINGS, CHECK & VERIFY ALL DIMENSIONS & LEVELS BEFORE COMMENCEMENT OF ANY WORK.

THIS DRAWING IS NOT TO BE COPIED IN PART OR WHOLE WITHOUT WRITTEN PERMISSION FROM WARREN SMITH AND PARTNERS.



REVISION	AMENDMENT	DATE	REVISION	AMENDMENT	DATE
1	DRAFT DEVELOPMENT APPLICATION	26/11/19			
2	DEVELOPMENT APPLICATION	06/12/19			
3	DEVELOPMENT APPLICATION	30/07/20			

CLIENT **St Johns Park Bowling Club**

PROJECT **WALLACIA COUNTRY CLUB**

PREPARED BY **Warren Smith & Partners**

Warren Smith & Partners Pty Ltd
 Level 9, 233 Castlereagh St, Sydney 2000 NSW Australia
 02 9299 1312 wsp@warrensmith.com.au
 www.warrensmith.com.au ABN 36 300 430 126

CONSULTING ENGINEERS
 ■ Hydraulic Services ■ Fire Services
 ■ Civil Services ■ Sydney Water Accredited Water Servicing Co-ordinator and Designer

SERVING THE CONSTRUCTION INDUSTRY SINCE 1981.

TITLE				
STORMWATER CATCHMENT PLAN				
SCALE	DRAWN	DESIGNED	CHECKED	APPROVED
AS SHOWN	M.Cz.	M.Cz.	N.Q.	M.C.
JOB No.	DRAWING No.		ISSUE	
6675000	C6.03		3	
DATE	STATUS			
DEC 2019	DEVELOPMENT APPLICATION			

Name	Fitted with Enviropod	Surface Elev. (m)	Pit Depth (m)	Pit Size and Type	From	To	Length (m)	U/S IL (m)	D/S IL (m)	Slope (%)	Pipe Type	Dia (mm)	No. Pipes
Pit 1/1	YES	52.78	0.83	900 SQ PIT WITH CLASS D GRATE	Pit 1/1	Pit 2/1	17.06	51.95	51.77	1.06	uPVC (SN8)	225	1
Pit 2/1	YES	52.65	0.91	900 SQ PIT WITH CLASS D GRATE	Pit 2/1	Pit 3/1	19.36	51.74	51.01	3.77	uPVC (SN8)	225	1
Pit 3/1	YES	51.84	0.86	900 SQ PIT WITH 600 x 900 CLASS D BUTTERFLY GRATE	Pit 3/1	Pit 4/1	14.41	50.98	50.54	3.05	RCP (CLASS 3)	300	1
Pit 4/1	YES	51.37	0.86	900 SQ PIT WITH 600 x 900 CLASS D BUTTERFLY GRATE	Pit 4/1	Pit 5/1	28.74	50.51	49.6	3.17	RCP (CLASS 3)	300	1
Pit 5/1	YES	50.43	0.86	2 x 900 SQ PIT WITH 600 x 900 CLASS D BUTTERFLY GRATE	Pit 5/1	OSD	15.64	49.57	48.5	6.84	RCP (CLASS 3)	300	1
Pit 1/2	YES	51	0.83	900 SQ PIT WITH CLASS D GRATE	Pit 1/2	Pit 2/2	11.9	50.17	49.62	4.62	uPVC (SN8)	225	1
Pit 2/2	YES	50.45	0.86	900 SQ PIT WITH CLASS D GRATE	Pit 2/2	Pit 3/2	7.16	49.59	49.52	0.98	uPVC (SN8)	225	1
Pit 3/2	YES	50.35	0.98	1200 SQ PIT WITH CLASS D GRATE	Pit 3/2	Pit 4/2	29.57	49.37	49.18	0.64	RCP (CLASS 3)	375	1
Pit 4/2	NO	50.38	1.24	900 SQ PIT WITH CLASS B COVER	Pit 4/2	Pit 5/2	34.63	49.14	48.89	0.72	RCP (CLASS 3)	375	1
Pit 5/2	NO	49.79	0.93	900 SQ PIT WITH CLASS B COVER	Pit 5/2	Pit 6/2	18.36	48.86	48.37	2.67	RCP (CLASS 3)	375	1
Pit 6/2	NO	49.2	0.86	900 SQ PIT WITH CLASS B COVER	Pit 6/2	Pit 7/2	9.72	48.34	48.27	0.72	RCP (CLASS 3)	375	1
Pit 7/2	NO	49.1	0.86	900 SQ PIT WITH CLASS B COVER	Pit 7/2	OSD	18.09	48.24	47.9	1.88	RCP (CLASS 3)	375	1
			0										
Pit 1/3	YES	52.6	0.83	900 SQ PIT WITH CLASS D GRATE	Pit 1/3	Pit 2/3	12.48	51.77	51.27	4.01	uPVC (SN8)	225	1
Pit 2/3	YES	52.1	0.86	900 SQ PIT WITH CLASS D GRATE	Pit 2/3	Pit 3/3	19.11	51.24	50.27	5.08	uPVC (SN8)	225	1
Pit 3/3	NO	51.1	0.86	900 SQ PIT WITH CLASS D GRATE	Pit 3/3	Pit 3/2	16.96	50.24	49.52	4.25	uPVC (SN8)	225	1
Pit 1/4	NO	50.8	0.2m - 0.22m	1.70m LONG ACO K200 GRATED TRENCH DRAIN WITH CLASS B HEEL SAFE GRATE		TO INTERNAL HYDRAULIC SYSTEM					uPVC (SN8)	150	1
Pit 1/5	NO	50.8	0.2m - 0.23m	2.23m LONG ACO K200 GRATED TRENCH DRAIN WITH CLASS B HEEL SAFE GRATE		TO INTERNAL HYDRAULIC SYSTEM					uPVC (SN8)	150	1
Pit 1/6	NO	50.8	0.2m - 0.27m	6.81m LONG ACO K200 GRATED TRENCH DRAIN WITH CLASS B HEEL SAFE GRATE		TO INTERNAL HYDRAULIC SYSTEM					uPVC (SN8)	150	1
Pit 1/7	YES	49.72	0.83	900 SQ PIT WITH CLASS D GRATE	Pit 1/7	OSD	12.52	48.89	48.4	3.91	uPVC (SN8)	225	1
Pit 1/8	YES	49.25	1	900 SQ PIT WITH CLASS D GRATE	Pit 1/8	OSD	12.14	48.25	48.1	1.24	uPVC (SN8)	225	1

PRELIMINARY - NOT FOR CONSTRUCTION

Path: X:\675000\B_A\H...
 Logon Name: mcamora
 File Date: 04/11/2020 11:58:03
 Call File: 1:6675000\Drawings\A\A\CD\CD\Design\Civil\2D\03.dwg

DO NOT SCALE FROM DRAWINGS, CHECK & VERIFY ALL DIMENSIONS & LEVELS BEFORE COMMENCEMENT OF ANY WORK.

THIS DRAWING IS NOT TO BE COPIED IN PART OR WHOLE WITHOUT WRITTEN PERMISSION FROM WARREN SMITH AND PARTNERS.

REVISION	AMENDMENT	DATE	REVISION	AMENDMENT	DATE
1	DRAFT DEVELOPMENT APPLICATION	26/11/19			
2	DEVELOPMENT APPLICATION	06/12/19			
3	DEVELOPMENT APPLICATION	30/07/20			
4	RE-ISSUE FOR DEVELOPMENT APPLICATION	04/11/20			

CLIENT



PROJECT

WALLACIA COUNTRY CLUB

PREPARED BY



Warren Smith & Partners Pty Ltd
 Level 9, 233 Castlereagh St, Sydney 2000 NSW Australia
 02 9299 1312 wsp@warrensmith.com.au
 www.warrensmith.com.au ABN 36 300 430 126

CONSULTING ENGINEERS

- Hydraulic Services
- Fire Services
- Civil Services
- Sydney Water Accredited Water Servicing Co-ordinator and Designer



SERVING THE CONSTRUCTION INDUSTRY SINCE 1981.

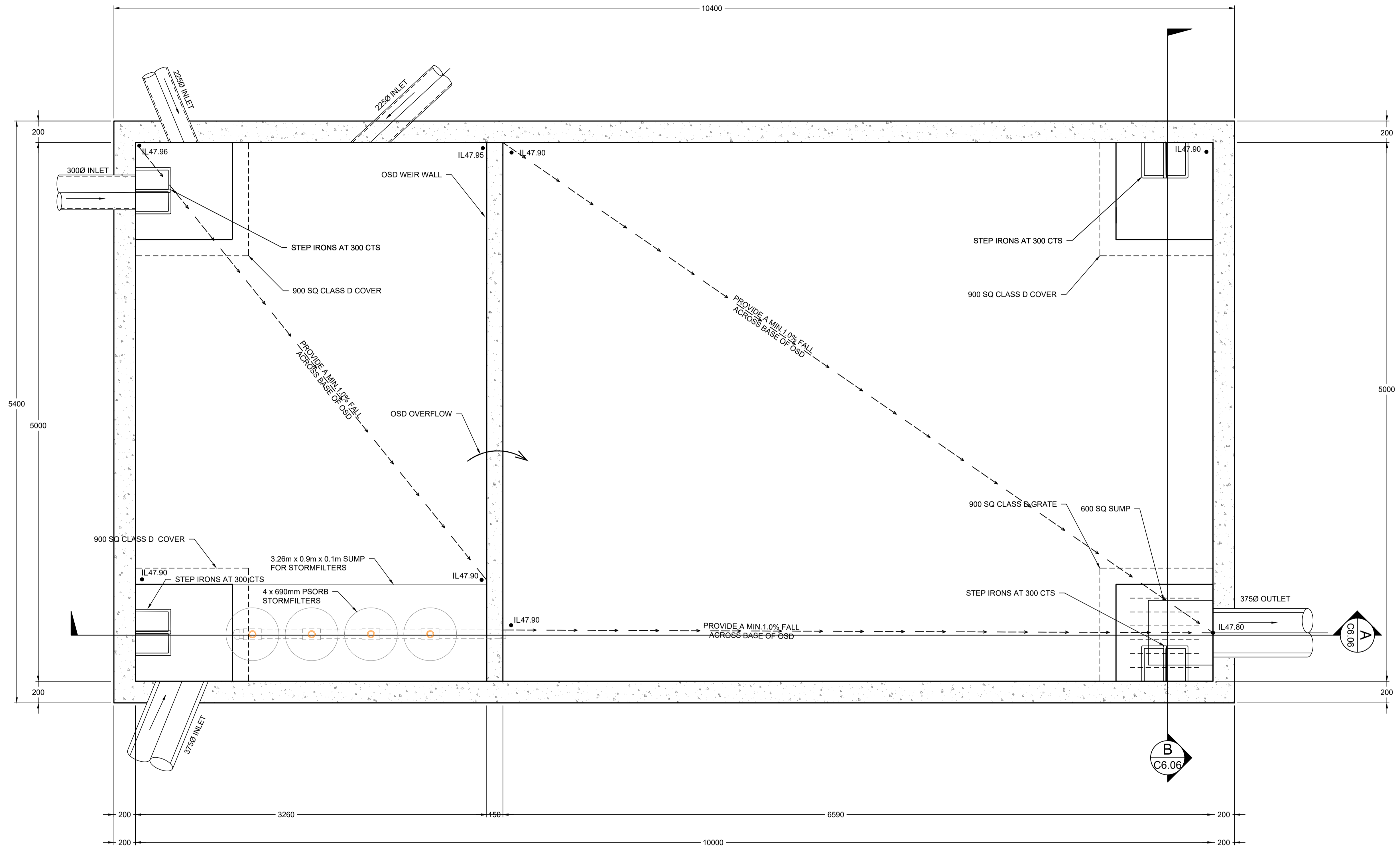
TITLE

PIT SCHEDULE

SCALE	DRAWN	DESIGNED	CHECKED	APPROVED
AS SHOWN	M.Cz.	M.Cz.	N.Q.	M.C.

JOB No. **6675000** DRAWING No. **C6.04** ISSUE **4**

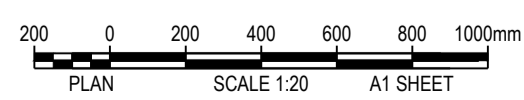
DATE **DEC 2019** STATUS **DEVELOPMENT APPLICATION**



OSD TANK 1 PLAN

SCALE: 1:20

STORM EVENT (% AEP)	PRE-DEVELOPMENT AREA DISCHARGE (L/s)	POST-DEVELOPMENT AREA DISCHARGE (L/s)
50% AEP	124	124
20% AEP	217	178
10% AEP	295	250
5% AEP	355	319
2% AEP	437	370
1% AEP	502	410



REVISION	AMENDMENT	DATE	REVISION	AMENDMENT	DATE
1	DRAFT DEVELOPMENT APPLICATION	26/11/19			
2	DEVELOPMENT APPLICATION	06/12/19			
3	DEVELOPMENT APPLICATION	30/07/20			

CLIENT **St Johns Park Bowling Club**

PROJECT **WALLACIA COUNTRY CLUB**

PREPARED BY **Warren Smith & Partners**

Warren Smith & Partners Pty Ltd
Level 9, 233 Castlereagh St, Sydney 2000 NSW Australia
02 9299 1312 wsp@warrensmith.com.au
www.warrensmith.com.au ABN 36 300 430 126

CONSULTING ENGINEERS
 ■ Hydraulic Services ■ Fire Services
 ■ Civil Services ■ Sydney Water Accredited Water Servicing Co-ordinator and Designer

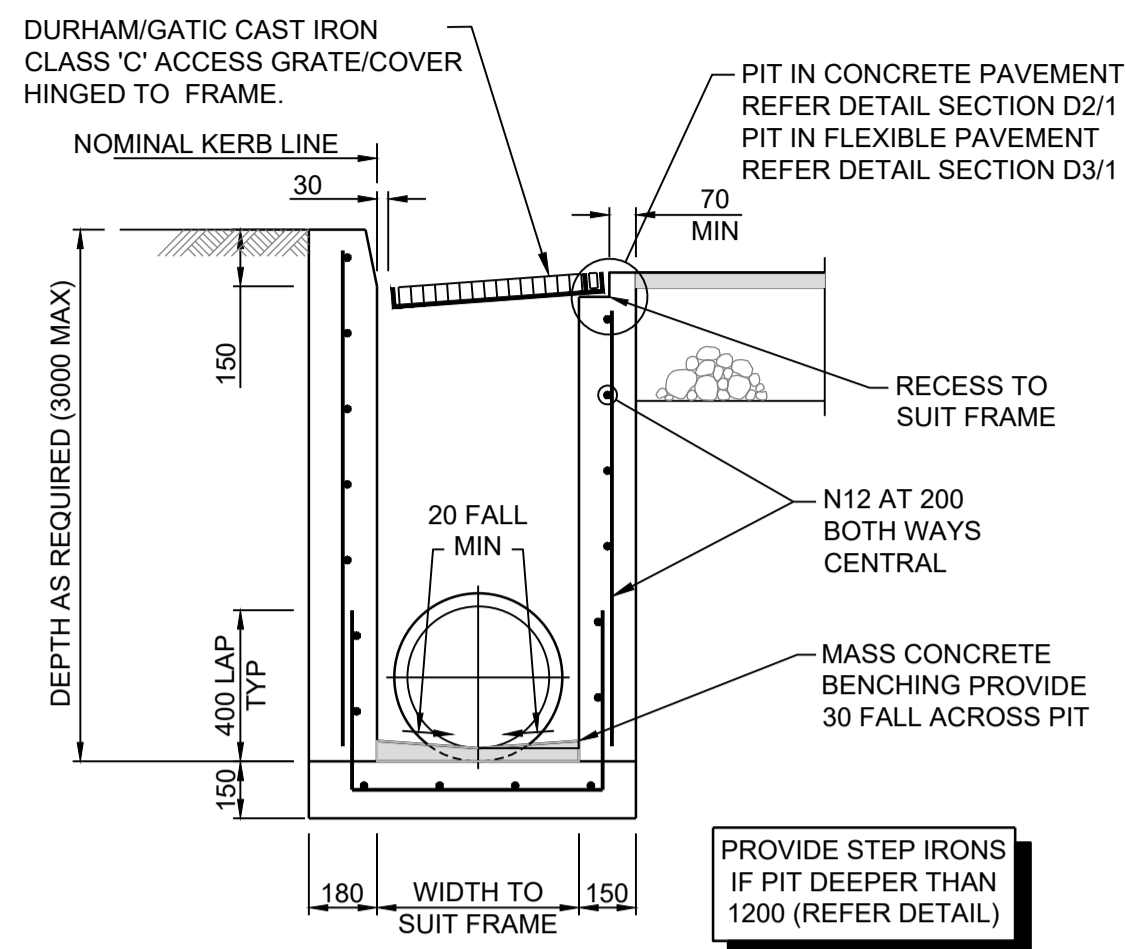
SERVING THE CONSTRUCTION INDUSTRY SINCE 1981.

TITLE **ON SITE DETENTION (OSD) TANK PLAN**

SCALE AS SHOWN	DRAWN M.Cz.	DESIGNED M.Cz.	CHECKED N.Q.	APPROVED M.C.
JOB No. 6675000	DRAWING No. C6.05		ISSUE 3	
DATE DEC 2019	STATUS DEVELOPMENT APPLICATION			

PRELIMINARY - NOT FOR CONSTRUCTION

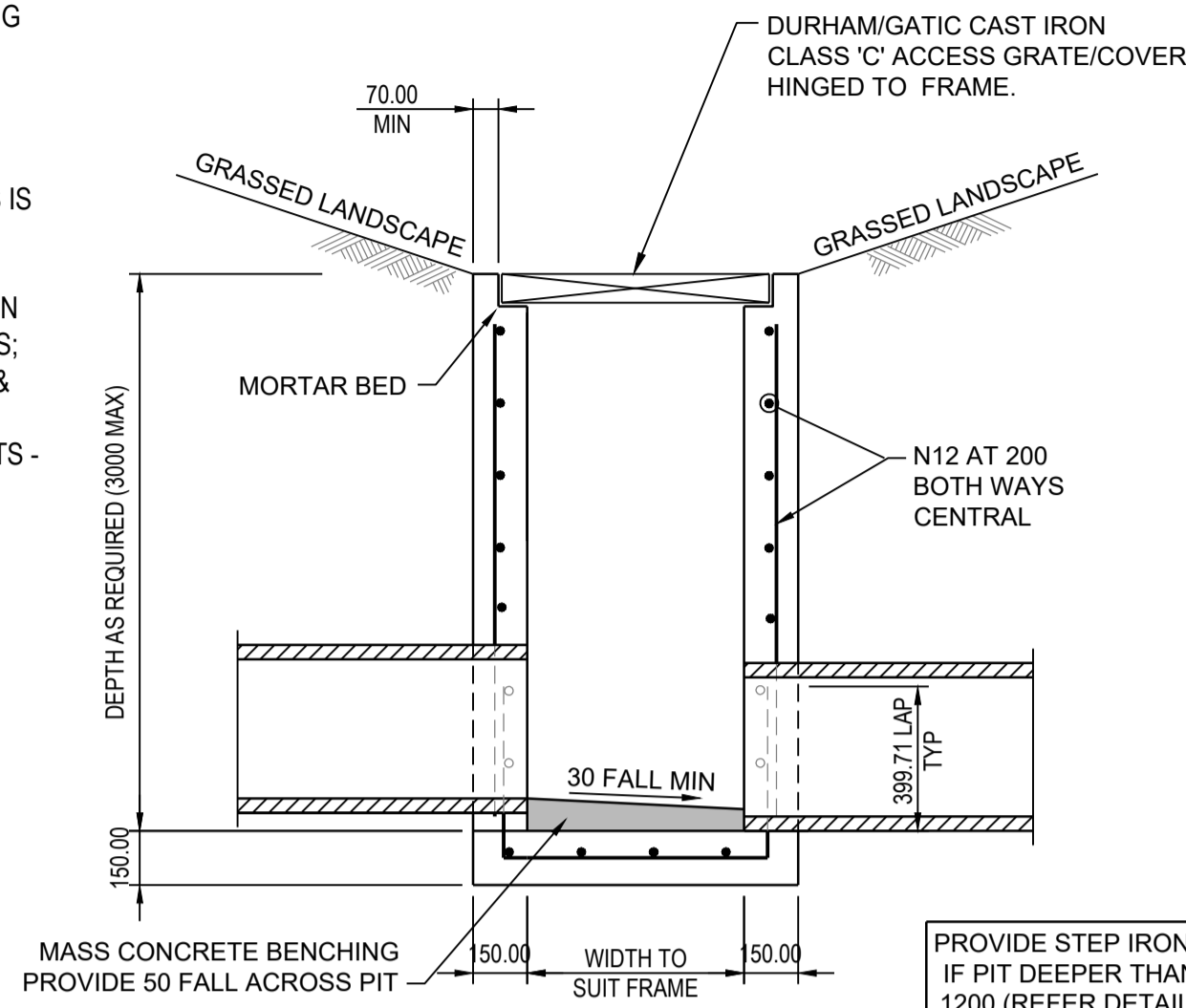
Path: X:\6675000\19_A\14.dwg
 Plot Date: 03/08/2020 08:13:24
 User: mczamora
 Call File: 1:6675000\Drawings\A\14\14.dwg On Site Detention (OSD) Tank Plan & Sections.dwg



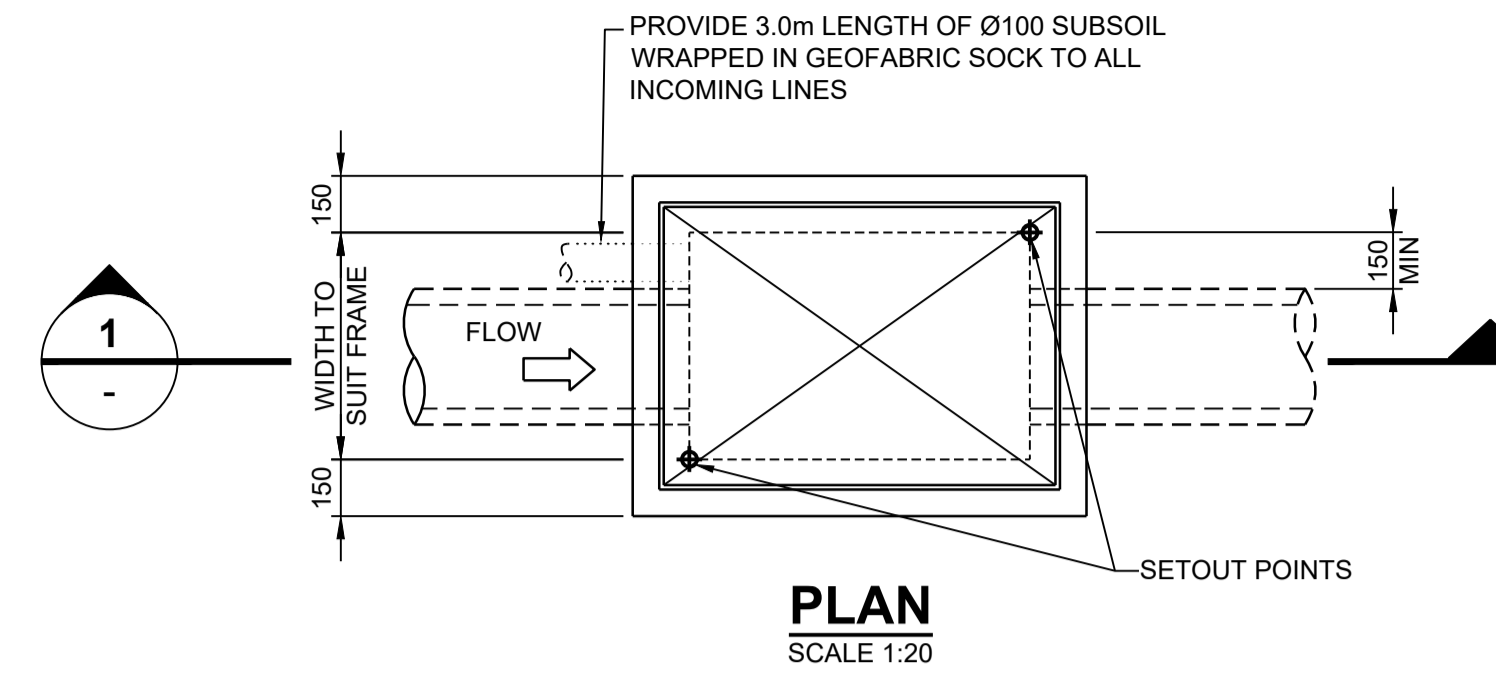
DETAIL
SCALE 1:20

NOTES:

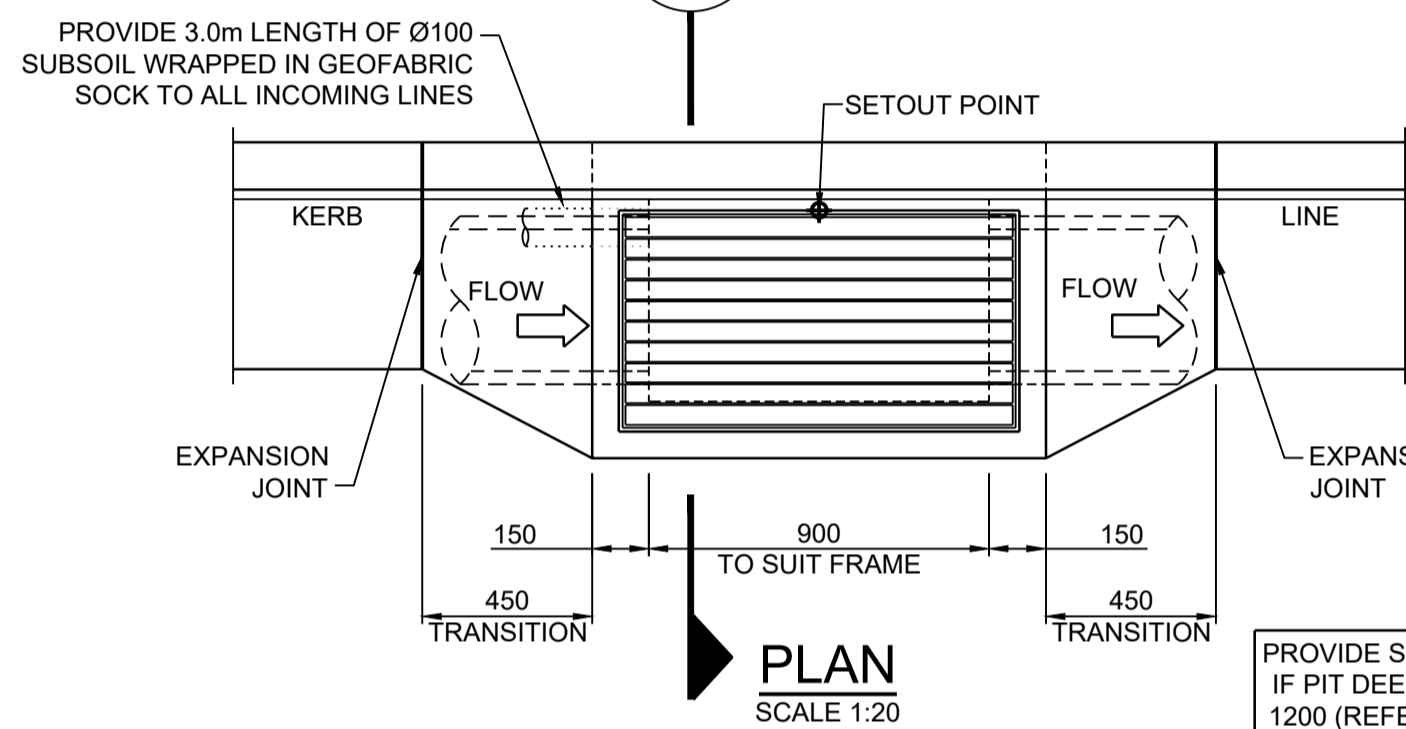
- TRENCH WIDTH MAY NEED TO BE INCREASED SUBJECT TO ACHIEVING ADEQUATE COMPACTION.
- MINIMUM PIPE COVER NOT UNDER ROADS = 450mm UNO.
- THE CONTRACTOR SHALL ENSURE THAT THE SHORING OF TRENCHES IS INSTALLED AS REQUIRED BY STATUTORY REQUIREMENTS.
- ENSURE BACKFILLING COMPACTION MEETS THE RELEVANT STANDARDS;
 - TRENCHES UNDER PAVED AREAS & BUILDINGS - 100% SMDD.
 - TRENCHES NOT UNDER PAVEMENTS - 95% SMDD.



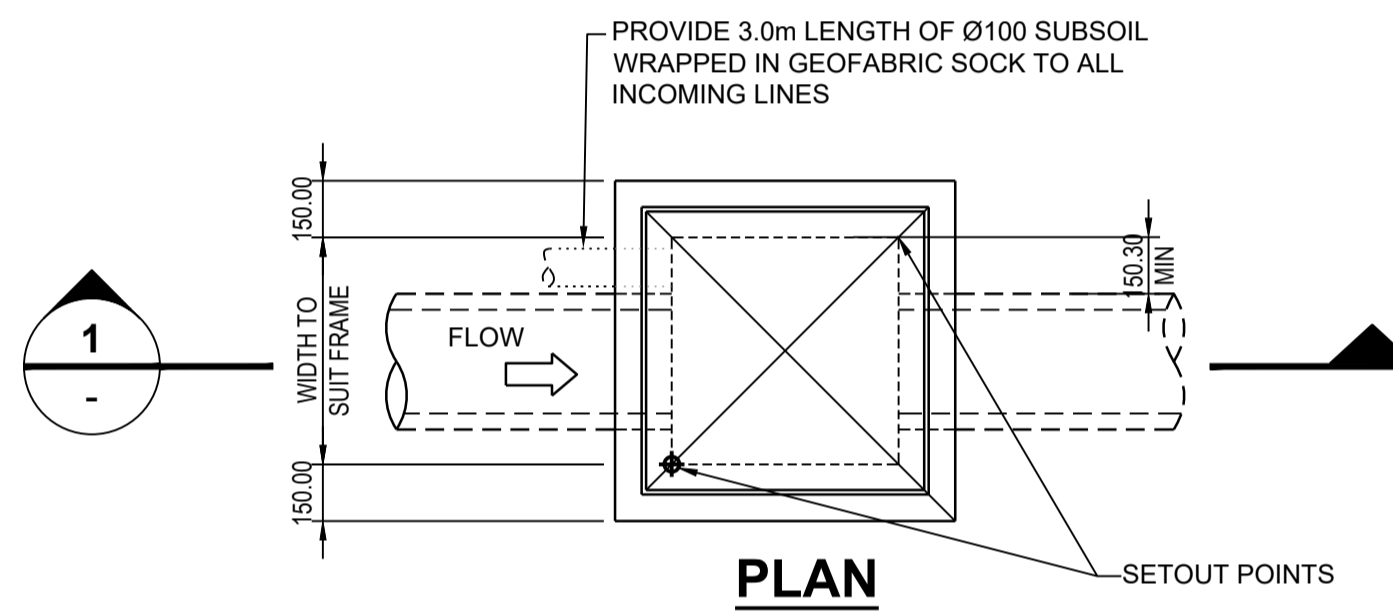
DETAIL
SCALE 1:20



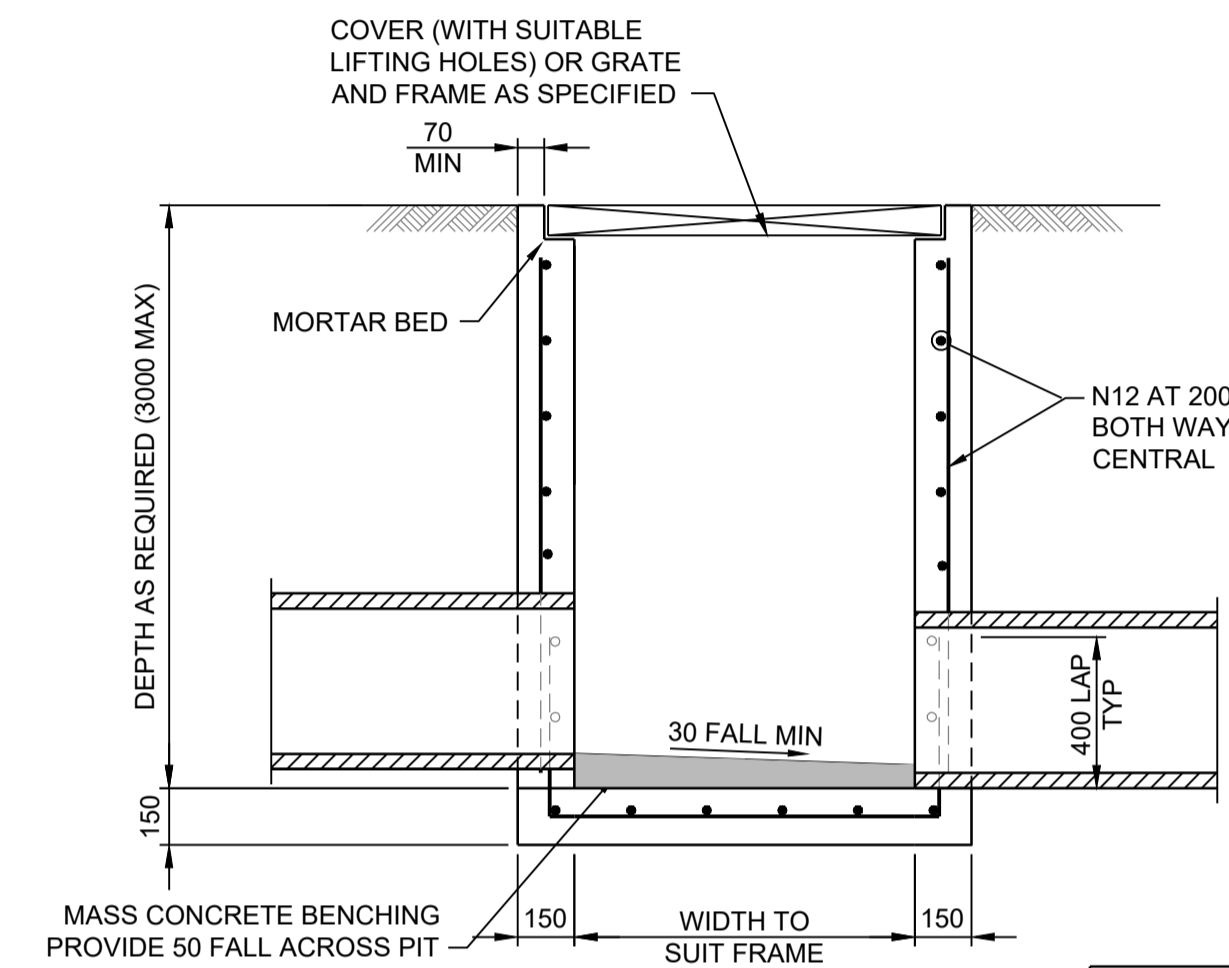
PLAN
SCALE 1:20



GRATED GULLY PIT
(PIPE SIZES ≤ Ø375)

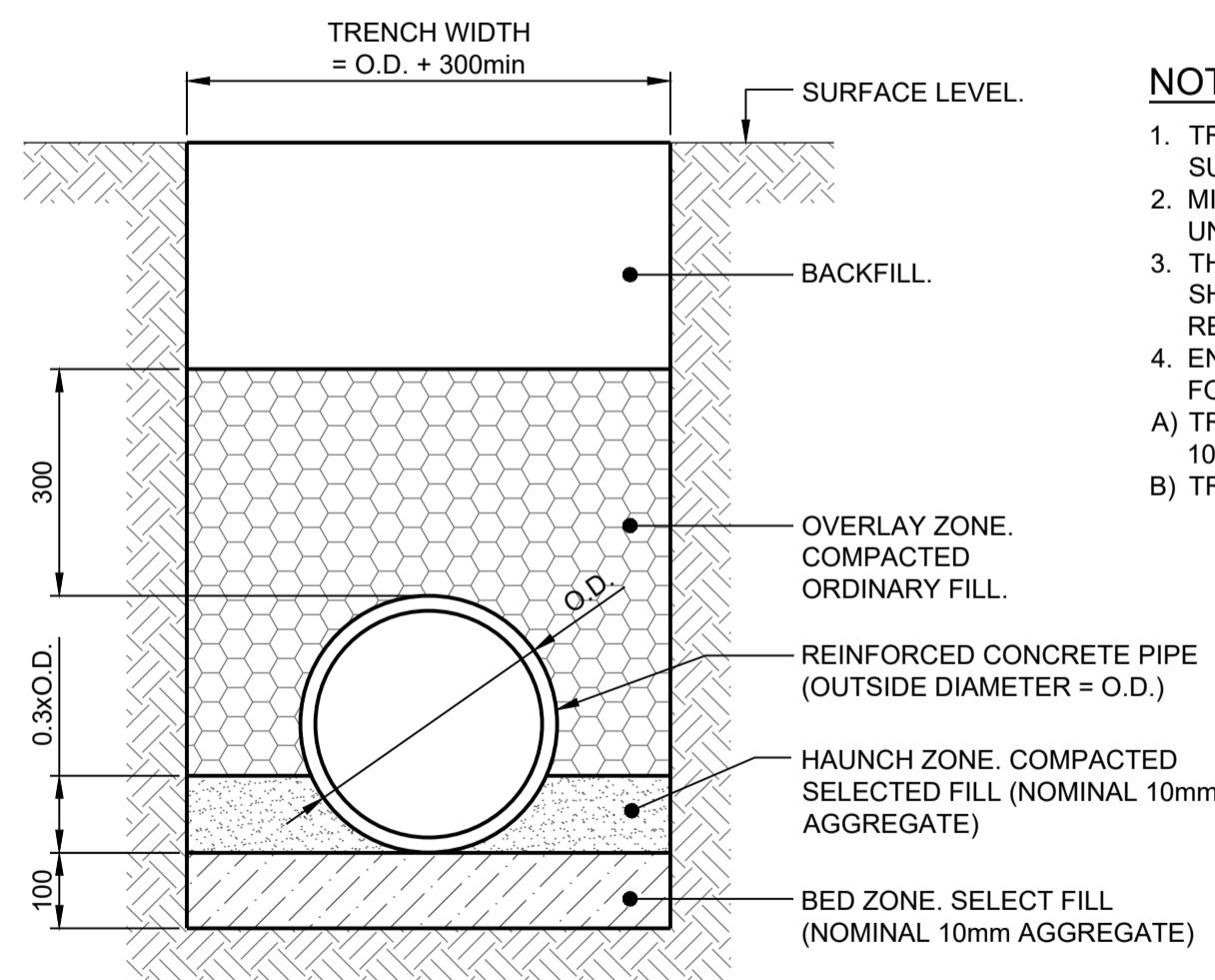


600 - 900SQ SURFACE INLET PITS



DETAIL
SCALE 1:20

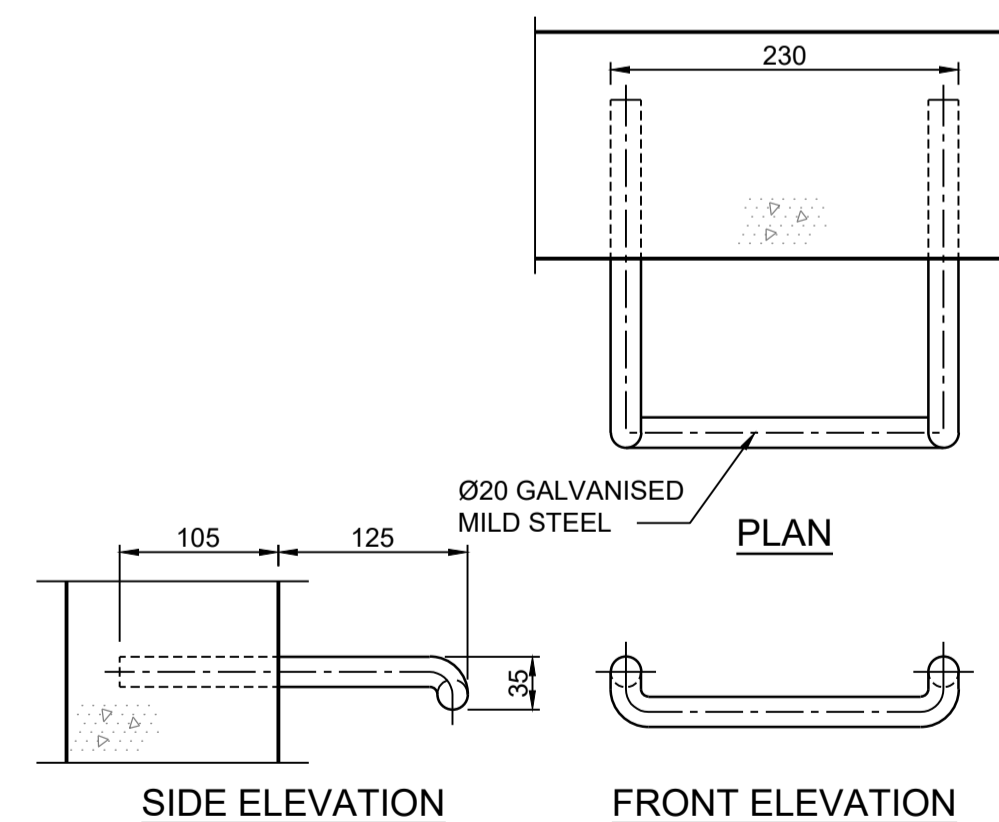
SURFACE INLET / JUNCTION PIT
(PIPE SIZES ≤ Ø450)



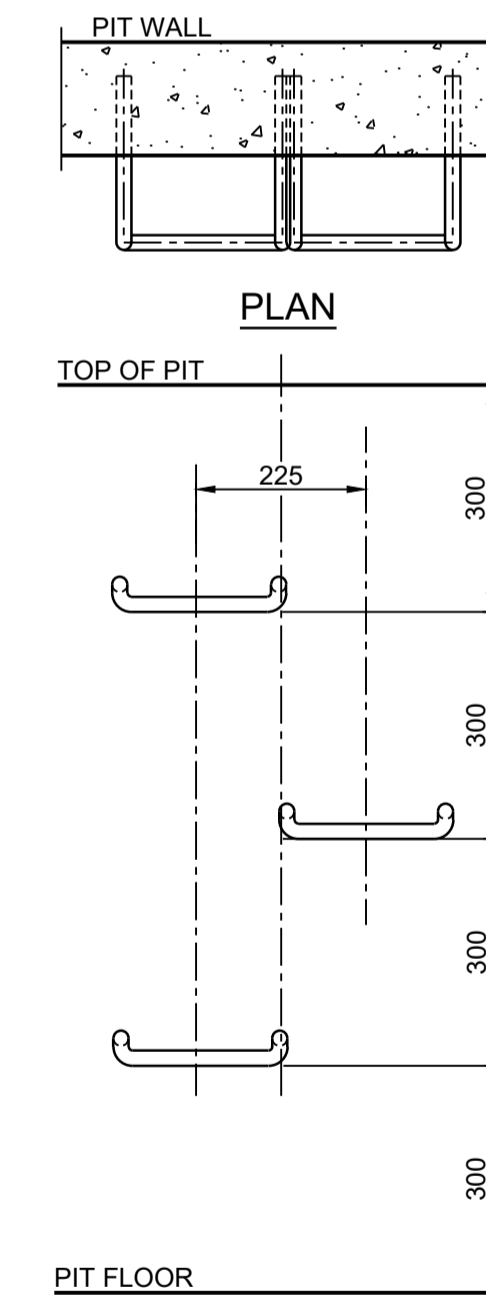
GENERAL AREAS
TYPICAL PIPE TRENCH
NOT TO SCALE

NOTES:

- TRENCH WIDTH MAY NEED TO BE INCREASED SUBJECT TO ACHIEVING ADEQUATE COMPACTION.
- MINIMUM PIPE COVER NOT UNDER ROADS = 300mm UNO.
- THE CONTRACTOR SHALL ENSURE THAT THE SHORING OF TRENCHES IS INSTALLED AS REQUIRED BY STATUTORY REQUIREMENTS.
- ENSURE BACKFILLING COMPACTION MEETS THE FOLLOWING STANDARDS;
 - TRENCHES UNDER PAVED AREAS & BUILDINGS - 100% SMDD.
 - TRENCHES NOT UNDER PAVEMENTS - 90% SMDD.



STEP IRON DETAIL
SCALE 1:5



STEP IRON
PLACEMENT TO PIT WALL
NOT TO SCALE

Path: X:\675000\B_A\H...
 Proj Date: 06/12/2019 14:43:27
 Logon Name: NQ:um
 Cad File: T:\675000\Drawings\A\675000\Civil\Design\Civil\2020\06\07 Stormwater Drainage Details.dwg

DO NOT SCALE FROM DRAWINGS, CHECK & VERIFY ALL DIMENSIONS & LEVELS BEFORE COMMENCEMENT OF ANY WORK.

THIS DRAWING IS NOT TO BE COPIED IN PART OR WHOLE WITHOUT WRITTEN PERMISSION FROM WARREN SMITH AND PARTNERS.



REVISION	AMENDMENT	DATE	REVISION	AMENDMENT	DATE
1	DRAFT DEVELOPMENT APPLICATION	26/11/19			
2	DEVELOPMENT APPLICATION	06/12/19			

CLIENT

 PROJECT
WALLACIA COUNTRY CLUB

PREPARED BY

 Warren Smith & Partners Pty Ltd
 Level 9, 233 Castlereagh St, Sydney 2000 NSW Australia
 02 9299 1312 wsp@warrensmith.com.au
 www.warrensmith.com.au ABN 36 300 430 126

CONSULTING ENGINEERS

 ■ Hydraulic Services ■ Fire Services
 ■ Civil Services ■ Sydney Water Accredited Water Servicing Co-ordinator and Designer

SERVING THE CONSTRUCTION INDUSTRY SINCE 1981.

TITLE
STORMWATER DRAINAGE DETAILS

SCALE AS SHOWN	DRAWN M.Cz.	DESIGNED M.Cz.	CHECKED N.Q.	APPROVED M.C.
JOB No. 6675000	DRAWING No. C6.07	ISSUE 2		
DATE DEC 2019	STATUS DEVELOPMENT APPLICATION			

PRELIMINARY - NOT FOR CONSTRUCTION