

# seniors living development

8 linksview avenue, LEONAY  
for GLENSTONE CONSTRUCTIONS



drawing No.	drawing name	revision	drawing No.	drawing name	revision	drawing No.	drawing name	revision	drawing No.	drawing name	revision	drawing No.	drawing name	revision	drawing No.	drawing name	revision
0001	cover page	AC	0006	SEPP Seniors Compliance	AB	1101	level 1 plan	AB	3000	sections 1	AC	9202	tree sections	AB	9901	notification plan	AA
0002	location plan	AC	0100	site plan	AF	1102	roof plan	AB	3001	sections 2	AC	9203	bus stop compliance	AA			
0003	site analysis - environmental	AB	0101	erosion & sediment control	AB	2000	north & south elevation	AC	9100	shadow diagrams	AB	9600	finishes schedule	AC			
0004	site analysis - context	AA	0200	demolition plan	AB	2001	east & west elevation	AC	9200	driveway section	AB	9601	finishes schedule 2	AC			
0005	BASIX commitments	AB	1100	ground floor plan	AE	2002	internal site elevations	AC	9201	threshold sections	AC	9602	finishes schedule 3	AC			

architect

integrated DESIGN group

architects | bathurst penrith sydney

copyright

integratedDESIGNgroup p/l

abn 84 115 006 329

nominated architects

tony mcburney reg#5273

simon thorne reg#7093

bathurst | 02 6332 6206

penrith | 02 4732 4430

sydney | 02 9764 6100

info@idgarchitects.com.au

www.idgarchitects.com.au

general notes

1. figured dimensions take precedence over scaled drawings

2. contractors to check and verify all levels datum and dimensions on site

3. all materials and workmanship to be in accordance with current written manufacturers instructions local regulations and SAA codes

4. conflicting information to be brought to notice of the architect and clarification sought before proceeding with any works

5. all drawings are not for construction and are subject to further design development, consultant input, council and legislative requirements.

finishes

BDRY boundary

BOE brick on edge

BPB bagged paint brickwork

CCR corrugated steel roof

CF colorbond fascia

CFC comp. fibre cement

CONC concrete

CJ control joint

CT ceramic tile

CPT carpet

CRT concrete roof tile

COG colorbond quad gutter

DP downpipe

DP&S downpipe & spreader

EGL existing ground line

EMB electrical meterboard

FB face brick

FC fibre cement

FFL finished floor level

F fixed glass

FGL finished ground line

GM gas meter

HWS hot water service

PB plasterboard

PCR painted cement render

PFB painted face brick

PFC painted fibre cement

PWB painted weatherboard

SC soldier course

TFB timber floor boards

TRC terracotta roof tiles

WM water meter

fixtures

b basin

b/head bulkhead

cs cavity sliding door

dry dryer

dw dishwasher

exh exhaust fan

fr freezer

fw floor waste

hc hollow core door

hr handrail

lb letterbox

m mirror

mw microwave

o/h overhead

p pantry

ref refrigerator

rh rangehood

sc solid core door

sh soap holder

ss stainless steel sink

st stove

shwr shower

t tub

tr towel rail

trh toilet roll holder

typ. typical

wc water closet

wm washing machine

v vinyl

vp vent pipe

uo under bench oven

wo wall oven

date

22/5/20

5/6/20

12/8/20

issue

AA

AB

AC

amendment

issue for consultant co-ordination

ISSUE FOR DA

revised issue for DA

title

cover page

multi-dwelling development

glenstone group | 8 linksview ave, LEONAY

project ref:

GLE18074

drawn:

TG | SL

checked:

AE

scale:

@ a3

DA

0001

issue

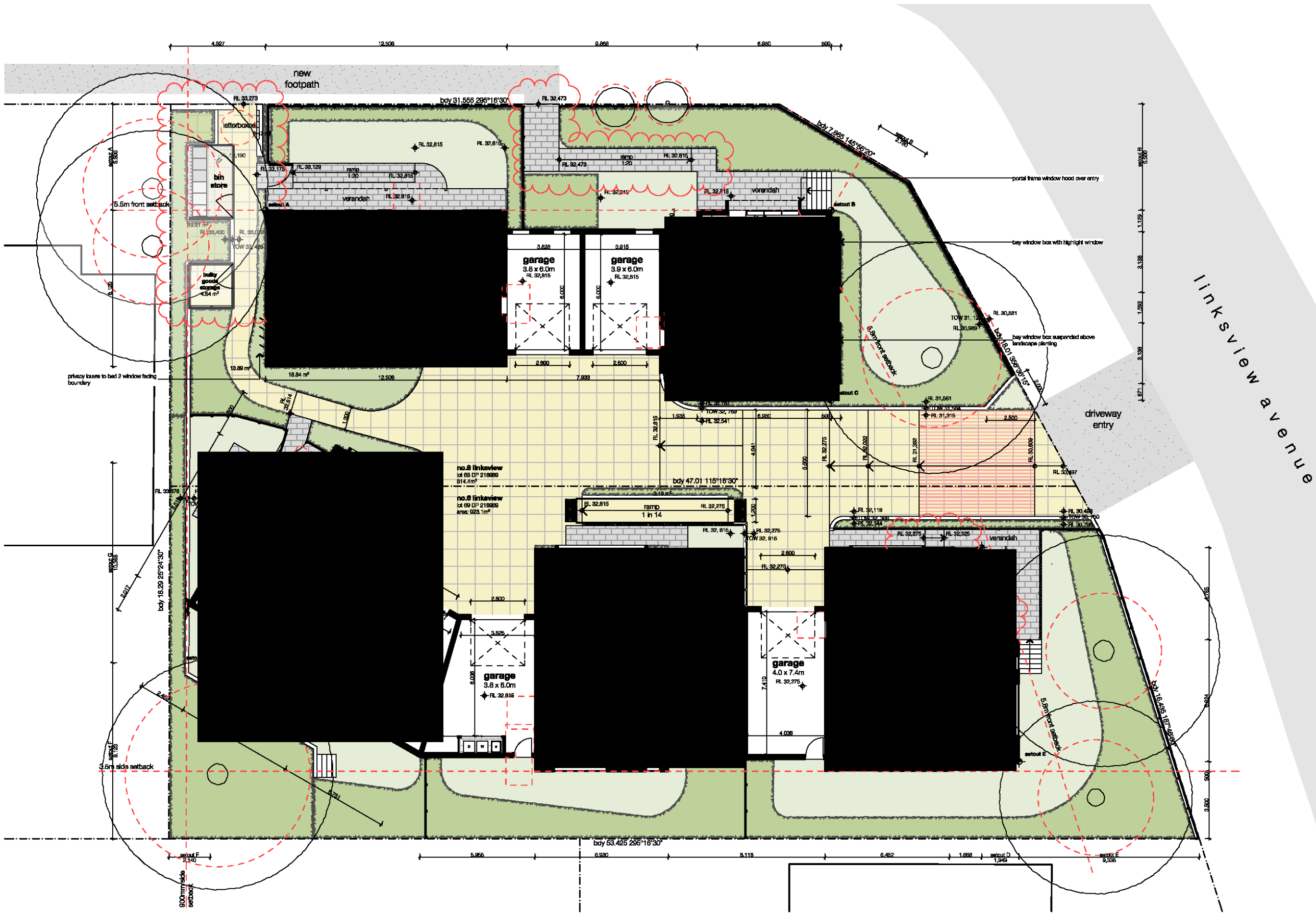
AC

Document Set ID: 9251731  
Version: 1, Version Date: 13/08/2020





architect	general notes	finishes	fixtures	date	issue	amendment	title
<div>integrated DESIGN group</div> <div>architects   bathurst penrith sydney</div> <div><div><div><div></div><div>Member Australian Institute of Architects</div></div><div><div>copyright integratedDESIGNgroup p/l abn 84 115 006 329</div><div>nominated architects tony mcburney reg#5273 simon thorne reg#7093</div></div><div><div>bathurst   02 6332 6206 penrith   02 4732 4430 sydney   02 9764 6100</div><div>info@idgarchitects.com.au www.idgarchitects.com.au</div></div></div></div>	1. figured dimensions take precedence over scaled drawings	BDRY boundary	b/b/head basin bulkhead	22/5/20	AA	issue for consultant co-ordination	<div>site plan</div> <div>multi-dwelling development</div> <div>glenstone group   8 linksvue ave, LEONAY</div> <div>project ref: GLE18074</div> <div>drawn: TG   SL</div> <div>checked: AE</div> <div>scale: 1:200 @ a3</div> <div><div><div></div><div>DA</div><div>0100</div></div><div>issue AF</div></div>
	2. contractors to check and verify all levels datum and dimensions on site	BOE brick on edge	cs cavity sliding door	29/5/20	AB	issue for consultant co-ordination	
	3. all materials and workmanship to be in accordance with current written manufacturers instructions local regulations and SAA codes	BPB bagged paint brickwork	dw dryer	5/6/20	AC	ISSUE FOR DA	
	4. conflicting information to be brought to notice of the architect and clarification sought before proceeding with any works	CCR corrugated steel roof	exh exhaust fan	7/8/20	AD	Issue for consultant co-ordination	
	5. all drawings are not for construction and are subject to further design development, consultant input, council and legislative requirements.	CF colorbond fascia	fr freezer	10/8/20	AE	Issue for consultant co-ordination	
		CFC comp. fibre cement	fw floor waste	12/8/20	AF	revised issue for DA	
		CONC concrete	hc hollow core door				
		CJ control joint	hr handrail				
		CT ceramic tile	lb letterbox				
		CPT carpet	m mirror				
		CRT concrete roof tile	mw microwave				
		COG colorbond quad gutter	o/h overhead				
		PFC painted face brick	p pantry				
		PFB painted fibre cement	ref refrigerator				
		PWB painted weatherboard					
		SC downpipe					
		TFB timber floor boards					
		TFC terracotta roof tiles					
		WM water meter					



architect

general notes

finishes

fixtures

date

issue amendment

title

integrated DESIGN group  
architects | bathurst penrith sydney



copyright  
IntegratedDESIGNgroup p/l  
abn 84 116 006 329

nominated architects  
tony mcburney reg#5273  
simon thorne reg#7093

bathurst | 02 8332 6208  
penrith | 02 4732 4430  
sydney | 02 9784 6100

info@idgarchitects.com.au  
www.idgarchitects.com.au

- figured dimensions take precedence over scaled drawings
- contractors to check and verify all levels datum and dimensions on site
- all materials and workmanship to be in accordance with current written manufacturers instructions local regulations and SAA codes
- conflicting information to be brought to notice of the architect and clarification sought before proceeding with any works
- all drawings are not for construction and are subject to further design development, consultant input, council and legislative requirements.

BDRY boundary  
BOE brick on edge  
BFB bagged paint brickwork  
CCR corrugated steel roof  
CFC colorbond fascia  
CONC concrete  
CJ control joint  
CT ceramic tile  
CPT carpet  
CRT concrete roof tile  
CQG colorbond quad gutter  
DP downpipe  
EGL existing ground line  
EMB electrical meterboard

FB face brick  
FC fibre cement  
FFL finished floor level  
F floor glass  
FGL finished ground line  
GM gas meter  
HWS hot water service  
PB plasterboard  
PCR painted cement render  
PFB painted face brick  
PFC painted floor cement  
PWB painted weatherboard  
SC soldier course  
TFB timber floor boards  
TRC terracotta roof tile  
WM water meter

b/b head basin  
c/s cavity sliding door  
c/dry dryer  
c/dw dishwasher  
e/s exhaust fan  
f freezer  
f/w floor waste  
h/c hollow core door  
h/r handrail  
l letterbox  
m mirror  
m/w microwave  
o/h overhead  
p pantry  
ref refrigerator

rh rangehood  
sc solid core door  
sh soap holder  
ss stainless steel sink  
st stove  
shwr shower  
t tub  
tr towel rail  
tri toilet roll holder  
typ. typical  
wc water closet  
wm washing machine  
v vinyl  
v vent pipe  
uo under bench oven  
wo well oven

date	issue	amendment
22/5/20	AA	issue for consultant co-ordination
29/5/20	AB	issue for consultant co-ordination
5/6/20	AC	ISSUE FOR DA
10/8/20	AD	issue for consultant co-ordination
12/8/20	AE	revised issue for DA

## ground floor plan

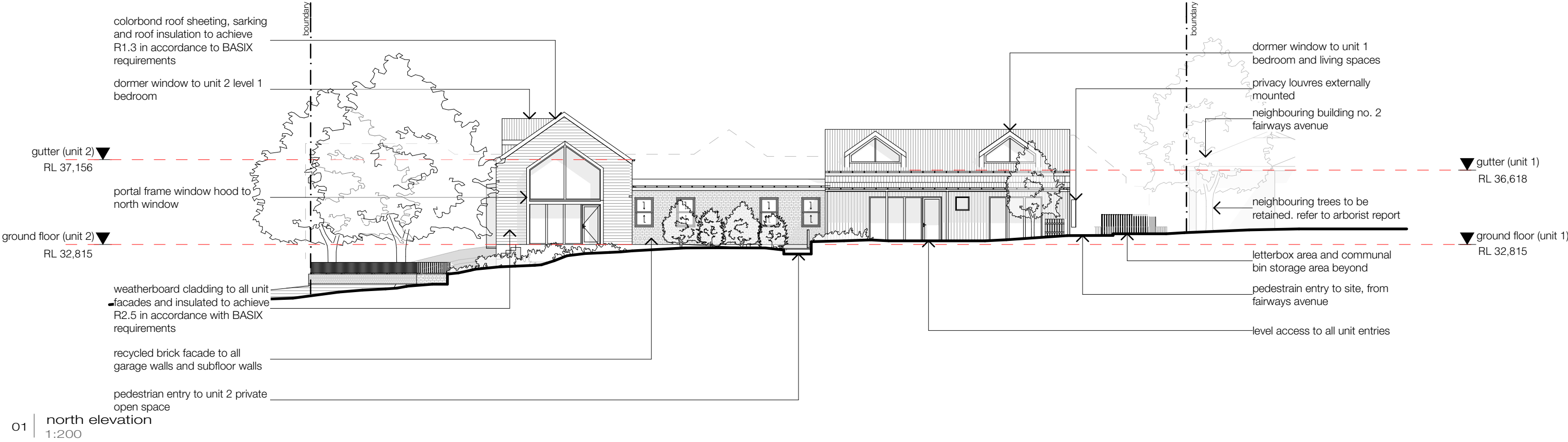
multi-dwelling development  
glenstone group | 8 linksview ave, LEONAY

project ref: GLE18074  
drawn: TG | SL  
checked: AE  
scale: @ a3



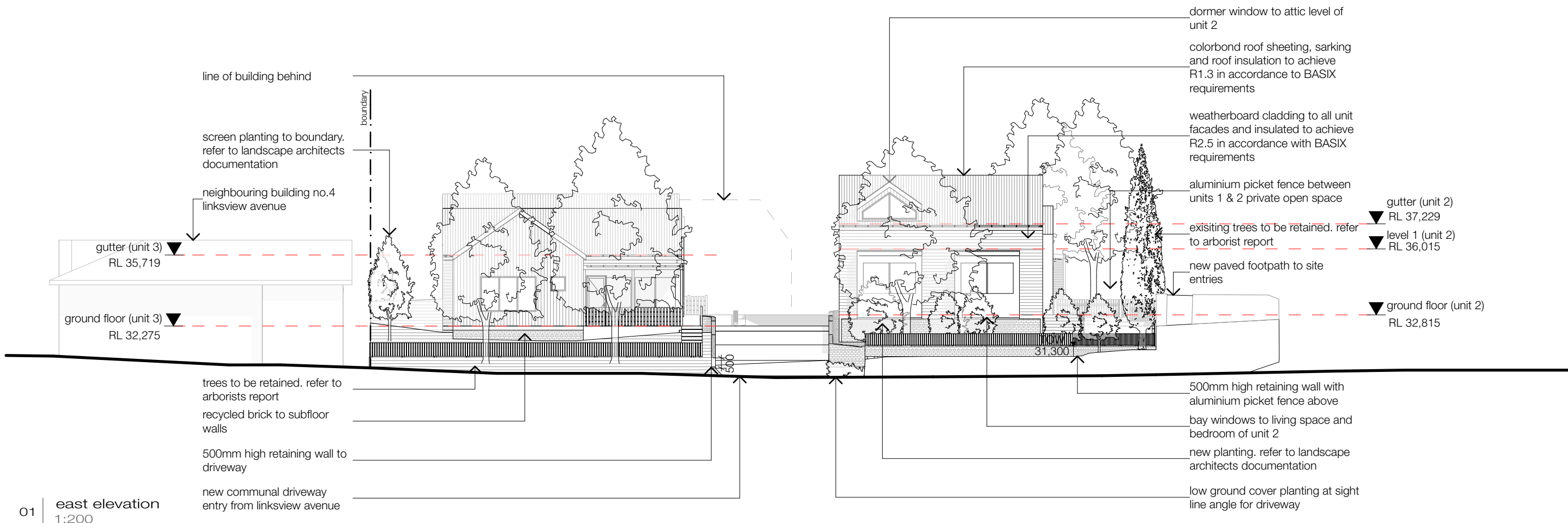
DA  
1100

issue  
AE

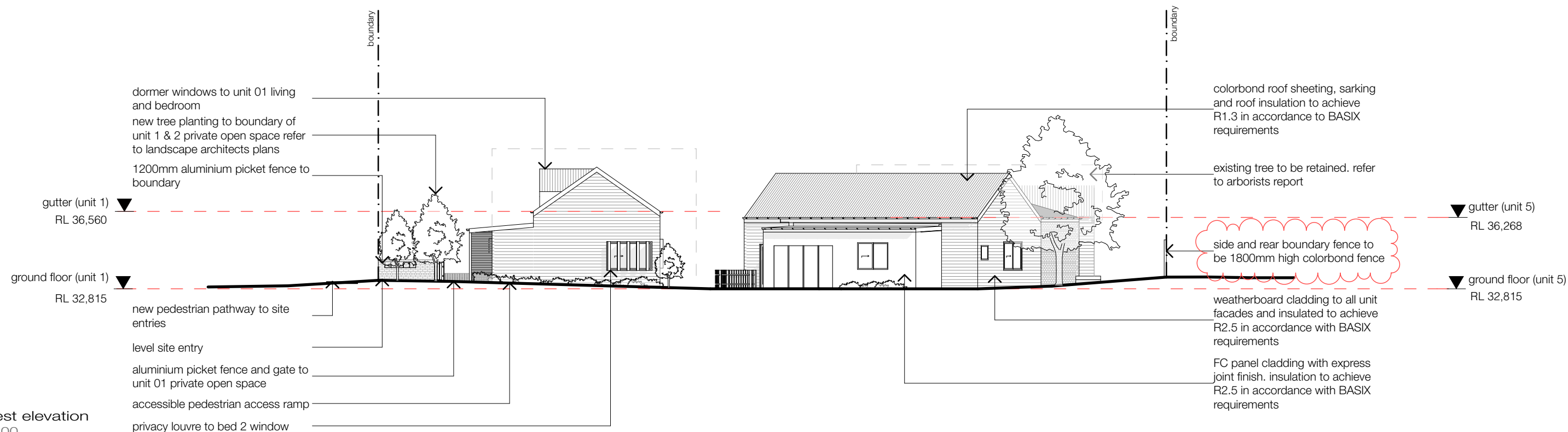


architect	general notes	finishes	fixtures	date	issue	amendment	title
<div>integrated DESIGN group</div> <div>architects   bathurst penrith sydney</div> <div><div><div><div></div><div></div><div></div></div><div>Member Australian Institute of Architects</div></div><div><div>copyright</div><div>integratedDESIGNgroup p/l</div><div>abn 84 115 006 329</div></div><div><div>bathurst   02 6332 6206</div><div>penrith   02 4732 4430</div><div>sydney   02 9764 6100</div></div><div><div>nominated architects</div><div>tony mcburney reg#5273</div><div>simon thorne reg#7093</div></div><div><div>info@idgarchitects.com.au</div><div>www.idgarchitects.com.au</div></div></div>	1. figured dimensions take precedence over scaled drawings	BDRY boundary	b basin	22/5/20	AA	issue for consultant co-ordination	north & south elevation multi-dwelling development glenstone group   8 linksview ave, LEONAY <div>project ref: GLE18074</div> <div>drawn: TG   SL</div> <div>checked: AE</div> <div>scale: 1:200 @ a3</div> <div><div>DA</div><div>2000</div><div>issue</div><div>AC</div></div>
	2. contractors to check and verify all levels datum and dimensions on site	BOE brick on edge	b/head bulkhead	5/6/20	AB	ISSUE FOR DA	
	3. all materials and workmanship to be in accordance with current written manufacturers instructions local regulations and SAA codes	BPB bagged paint brickwork	cs cavity sliding door	12/8/20	AC	revised issue for DA	
	4. conflicting information to be brought to notice of the architect and clarification sought before proceeding with any works	CCR corrugated steel roof	dry dryer				
	5. all drawings are not for construction and are subject to further design development, consultant input, council and legislative requirements.	CF colorbond fascia	dw dishwasher				
		CFC comp. fibre cement	exh exhaust fan				
		CONC concrete	fr freezer				
		CJ control joint	fw floor waste				
		CT ceramic tile	hc hollow core door				
		CPT carpet	hr handrail				
		CRT concrete roof tile	lb letterbox				
		COG colorbond quad gutter	m mirror				
		DP downpipe	mw microwave				
		DP&S downpipe & spreader	o/h overhead				
		EGL existing ground line	p pantry				
		EMB electrical meterboard	ref refrigerator				
		FB face brick	rh rangehood				
		FC fibre cement	sc solid core door				
		FFL finished floor level	sh soap holder				
		F fixed glass	st stainless steel sink				
		FGL finished ground line	ss stove				
		GM gas meter	shwr shower				
		HWS hot water service	t tub				
		PB plasterboard	tr towel rail				
		PCR painted cement render	trh toilet roll holder				
		PFB painted face brick	typ. typical				
		PFC painted fibre cement	wc water closet				
		PWB painted weatherboard	wm washing machine				
		SC soldier course	v vinyl				
		TFB timber floor boards	vp vent pipe				
		TFC terracotta roof tiles	uo under bench oven				
		WM water meter	wo wall oven				





01 | east elevation  
1:200



02 | west elevation  
1:200

architect

integrated DESIGN group  
architects | bathurst penrith sydney



copyright  
integratedDESIGNgroup p/l  
abn 84 115 006 329

bathurst | 02 6332 6206  
penrith | 02 4732 4430  
sydney | 02 9764 6100

nominated architects  
tony mcburney reg#5273  
simon thorne reg#7093

info@idgarchitects.com.au  
www.idgarchitects.com.au

general notes

- figured dimensions take precedence over scaled drawings
- contractors to check and verify all levels datum and dimensions on site
- all materials and workmanship to be in accordance with current written manufacturers instructions local regulations and SAA codes
- conflicting information to be brought to notice of the architect and clarification sought before proceeding with any works
- all drawings are not for construction and are subject to further design development, consultant input, council and legislative requirements.

finishes

BDRY	boundary	FB	face brick
BOE	brick on edge	FC	fibre cement
BPB	bagged paint brickwork	FFL	finished floor level
CCR	corrugated steel roof	F	fixed glass
CF	colorbond fascia	FGL	finished ground line
CFC	comp. fibre cement	GM	gas meter
CONC	concrete	HWS	hot water service
CJ	control joint	PB	plasterboard
CT	ceramic tile	PCR	painted cement render
CPT	carpet	PFB	painted face brick
CRT	concrete roof tile	PFC	painted fibre cement
COG	colorbond quad gutter	PWB	painted weatherboard
DP	downpipe	SC	soldier course
DP&S	downpipe & spreader	TFB	timber floor boards
EGL	existing ground line	TFC	terra-cotta roof tiles
EMB	electrical meterboard	WM	water meter

fixtures

b	basin	rh	rangehood
b/head	bulkhead	sc	solid core door
cs	cavity sliding door	sh	soap holder
dry	dryer	ss	stainless steel sink
dw	dishwasher	st	stove
exh	exhaust fan	shwr	shower
fr	freezer	t	tub
fw	floor waste	tr	towel rail
hc	hollow core door	trh	toilet roll holder
hr	handrail	typ.	typical
lb	letterbox	wc	water closet
m	mirror	wm	washing machine
mw	microwave	v	vent pipe
o/h	overhead	vp	vent pipe
p	pantry	uo	under bench oven
ref	refrigerator	wo	wall oven

date

22/5/20	AA	issue for consultant co-ordination
5/6/20	AB	ISSUE FOR DA
12/8/20	AC	revised issue for DA

issue

22/5/20	AA	issue for consultant co-ordination
5/6/20	AB	ISSUE FOR DA
12/8/20	AC	revised issue for DA

amendment

22/5/20	AA	issue for consultant co-ordination
5/6/20	AB	ISSUE FOR DA
12/8/20	AC	revised issue for DA

title

east & west elevation  
multi-dwelling development  
glenstone group | 8 linksview ave, LEONAY

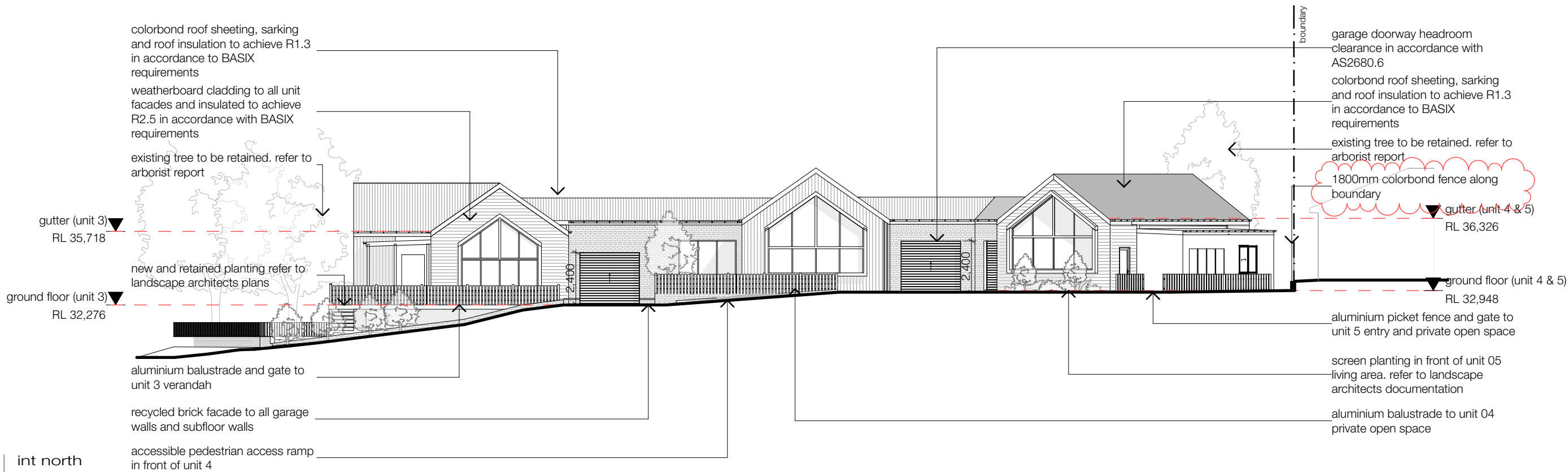
project ref: GLE18074  
drawn: TG | SL  
checked: AE  
scale: 1:200 @ a3



DA  
2001

issue  
AC

01 | int north  
1:200



02 | int south  
1:200



architect

general notes

- figured dimensions take precedence over scaled drawings
- contractors to check and verify all levels datum and dimensions on site
- all materials and workmanship to be in accordance with current written manufacturers instructions local regulations and SAA codes
- conflicting information to be brought to notice of the architect and clarification sought before proceeding with any works
- all drawings are not for construction and are subject to further design development, consultant input, council and legislative requirements.

finishes

BDRY	boundary	FB	face brick
BOE	brick on edge	FC	fibre cement
BPB	bagged paint brickwork	FFL	finished floor level
CCR	corrugated steel roof	F	fixed glass
CF	colorbond fascia	FGL	finished ground line
CFC	comp. fibre cement	GM	gas meter
CONC	concrete	HWS	hot water service
CJ	control joint	PB	plasterboard
CT	ceramic tile	PCR	pointed cement render
CPT	carpet	PFB	pointed face brick
CRT	concrete roof tile	PFC	pointed fibre cement
COG	colorbond quad gutter	PWB	pointed weatherboard
DP	downpipe	SC	solder course
DP&S	downpipe & spreader	TFB	timber floor boards
EGL	existing ground line	TFC	terra-cotta roof tiles
EMB	electrical meterboard	WM	water meter

fixtures

b	basin	rh	rangehood
b/head	bulkhead	sc	solid core door
cs	cavity sliding door	sh	soap holder
dry	dryer	ss	stainless steel sink
dw	dishwasher	st	stove
exh	exhaust fan	shwr	shower
fr	freezer	t	tub
fw	floor waste	tr	towel rail
hc	hollow core door	trh	toilet roll holder
hr	handrail	typ.	typical
lb	letterbox	wc	water closet
m	mirror	wm	washing machine
mw	microwave	v	vinyl
o/h	overhead	vp	vent pipe
p	pantry	uo	under bench oven
ref	refrigerator	wo	wall oven

date

date	issue	amendment
22/5/20	AA	issue for consultant co-ordination
5/6/20	AB	ISSUE FOR DA
12/8/20	AC	revised issue for DA

title

multi-dwelling development
glestone group   8 linksview ave, LEONAY
project ref: GLE18074
drawn: TG   SL
checked: AE
scale: 1:200 @ a3

internal site elevations

multi-dwelling development  
glestone group | 8 linksview ave, LEONAY

project ref: GLE18074  
drawn: TG | SL  
checked: AE  
scale: 1:200 @ a3



DA  
2002

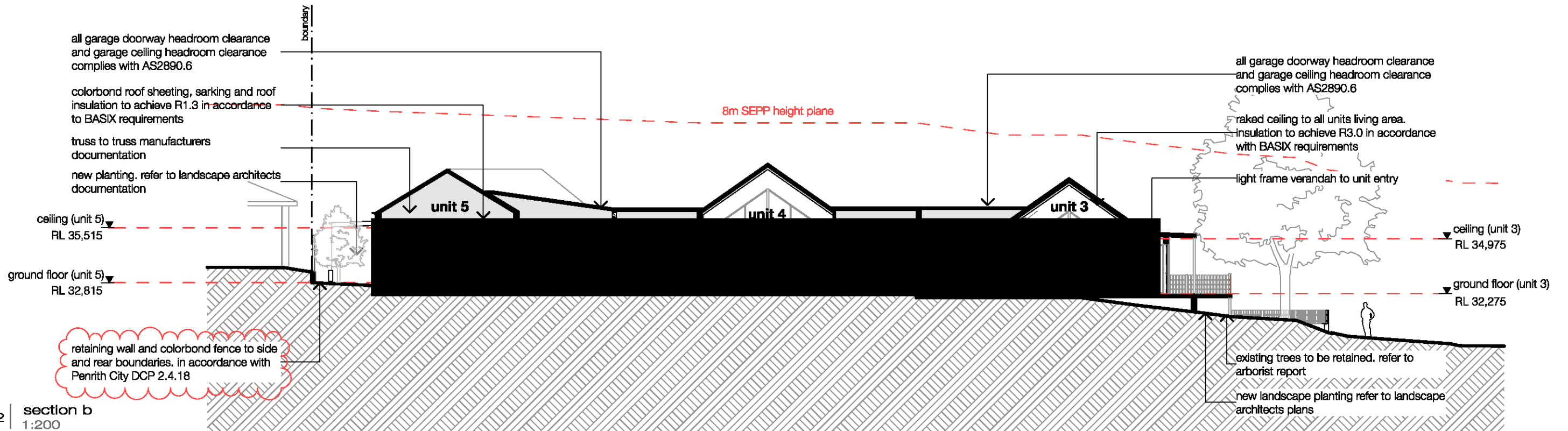
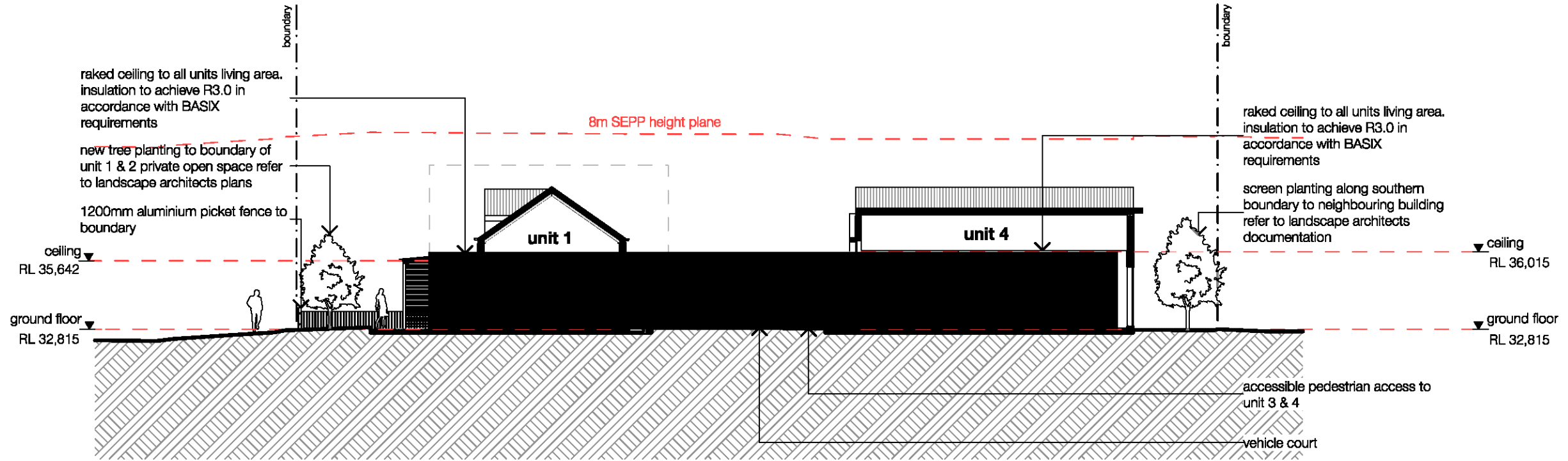
issue  
AC



copyright  
integratedDESIGNgroup p/l  
abn 84 115 006 329  
bathurst | 02 6332 6206  
penrith | 02 4732 4430  
sydney | 02 9764 6100  
nominated architects  
tony mcburney reg#5273  
simon thorne reg#7093  
info@idgarchitects.com.au  
www.idgarchitects.com.au



```
preliminary not for construction
```



architect

general notes

**finishes**

## fixtures

date

issue

**amendment**

**title**

integrated **DESIGN** group  
architects | bathurst penrith sydney

1. figured dimensions take precedence over scaled drawings
2. contractors to check and verify all levels datum and dimensions on site
3. all materials and workmanship to be in accordance with current manufacturers instructions local regulations and SAA codes
4. conflicting information to be brought to notice of the architect and clarification sought before proceeding with any works
5. all drawings are not for construction and are subject to further design development, consultant input, council and legislative requirements.

BDfy	boundary	FB	face brick
BOE	brick on edge	FC	face cement
BPB	bagged paint brickwork	FFL	finished floor level
CCR	corrugated steel roof	FG	fixed glass
CF	colorbond fascia	FGIL	finished ground level
CFC	concrete fibre cement	GM	gas meter
CNC	concrete	GW	hot water service
CJ	control joint	PB	plesterboard
CT	ceramic tile	PCR	painted cement render
CPT	carpet	PFB	painted face brick
CRT	concrete roof tile	PFRC	painted fibre cement
COG	colorbond gable gutter	PWB	painted weatherboard
CG	dowpipe	SC	solder course
DPBS	dowpiped & spreader	TB	timber floor boards
ESL	existing ground level	TRC	timber roof tile
EMB	electrical meterboard	WM	water meter

b	basin	ri	rangehood
b/need	bulldhead	sc	solid core door
os	avity sliding door	sh	spok holder
dy	dryer	ss	stainless steel sink
dw	dishwasher	st	stove
edh	exhaust fan	st	shower
fr	freezer	stwr	struts
fw	floor waste	tr	towel rail
h	hollow core door	trt	toilet roll holder
hr	handrail	typ.	typical
tr	tetrahbox	wc	water closet
m	mill	w	washing machine
mwr	microwave	v	vinyl
oh	overhead	vp	vent pipe
p	pantry	uo	under bench oven
ref	refrigerator	wo	well oven

[illegible]

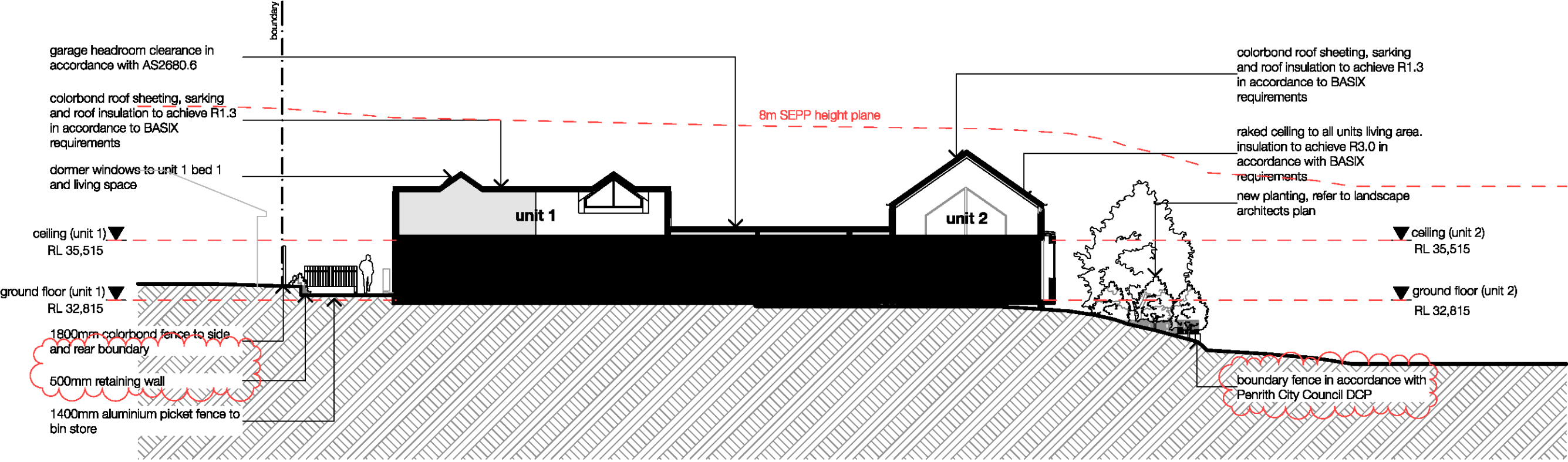
## sections 1

multi-dwelling development  
glenstone group | 8 linksview ave, LEONAY

project ref: GLE18074  
drawn: TG | SL  
checked: AE  
scale: 1:200 @ a3

DA  
3000

**Issue**  
**AC**

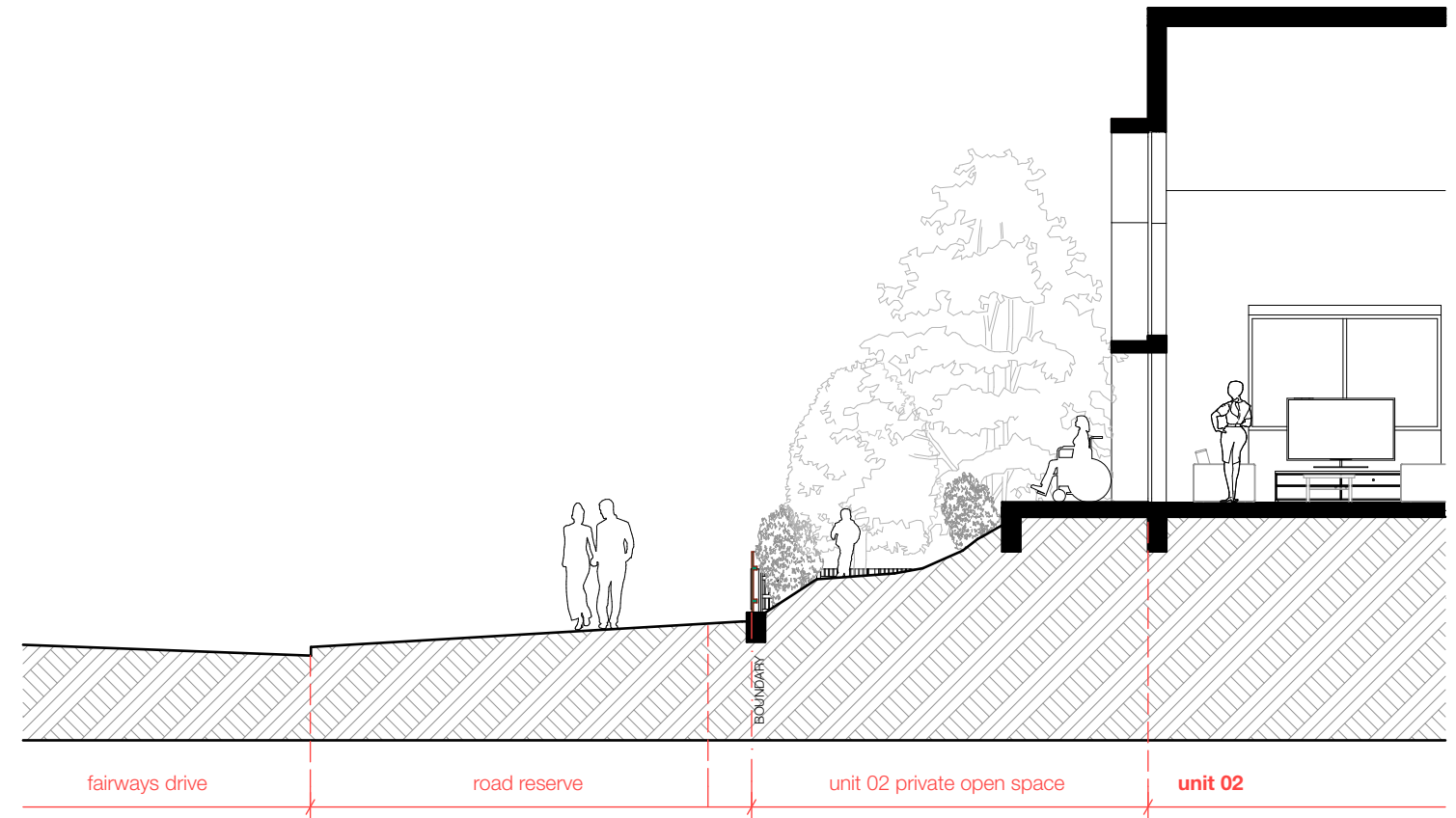
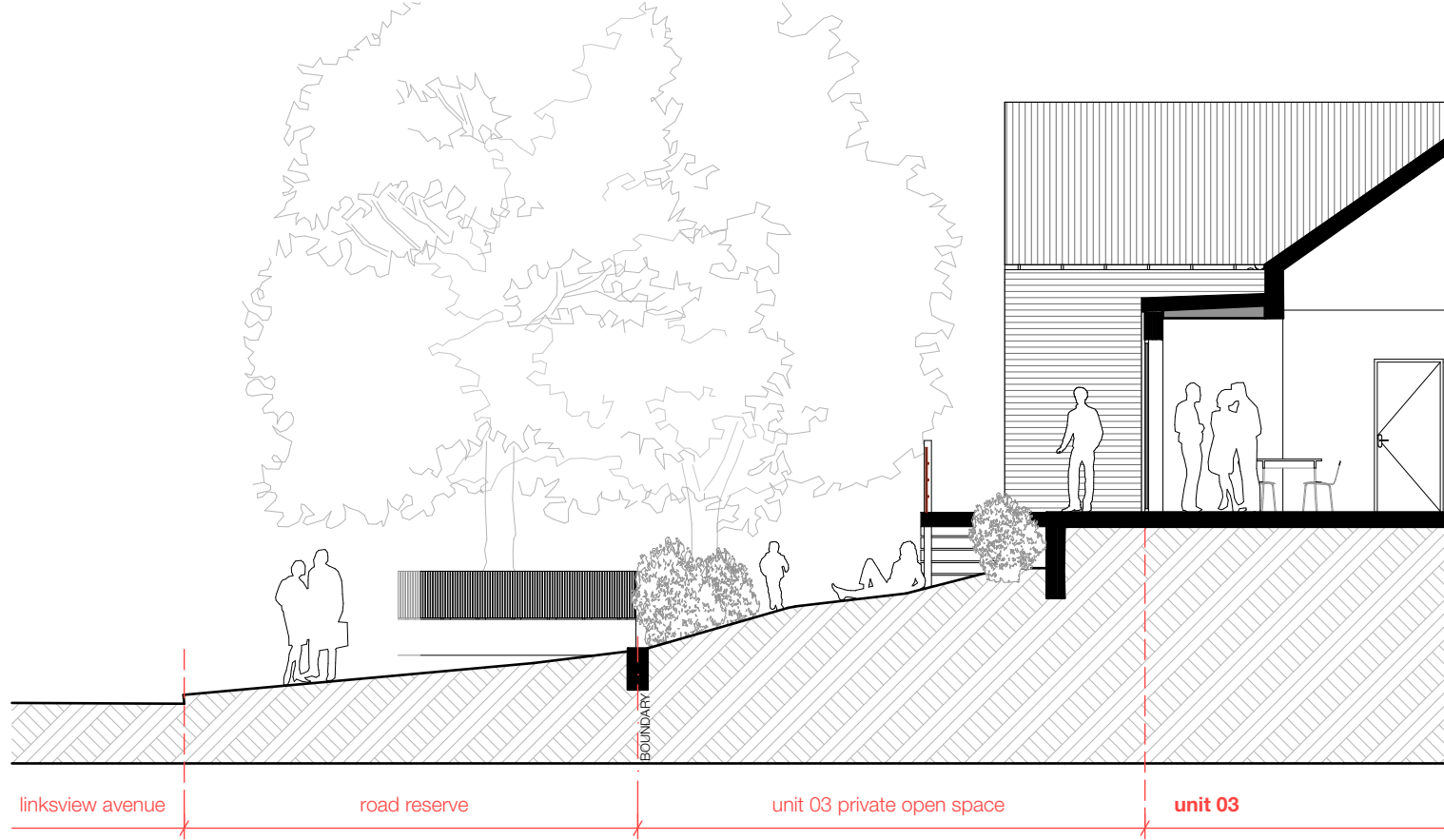
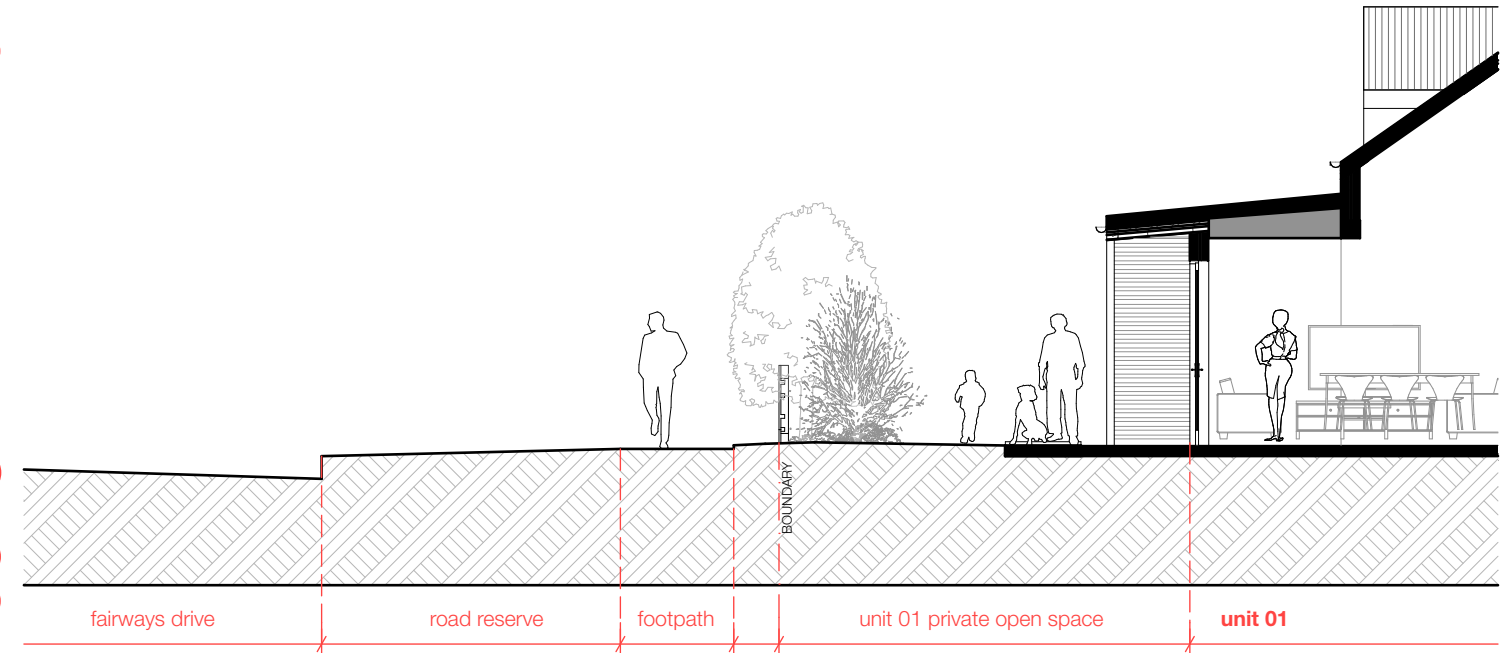
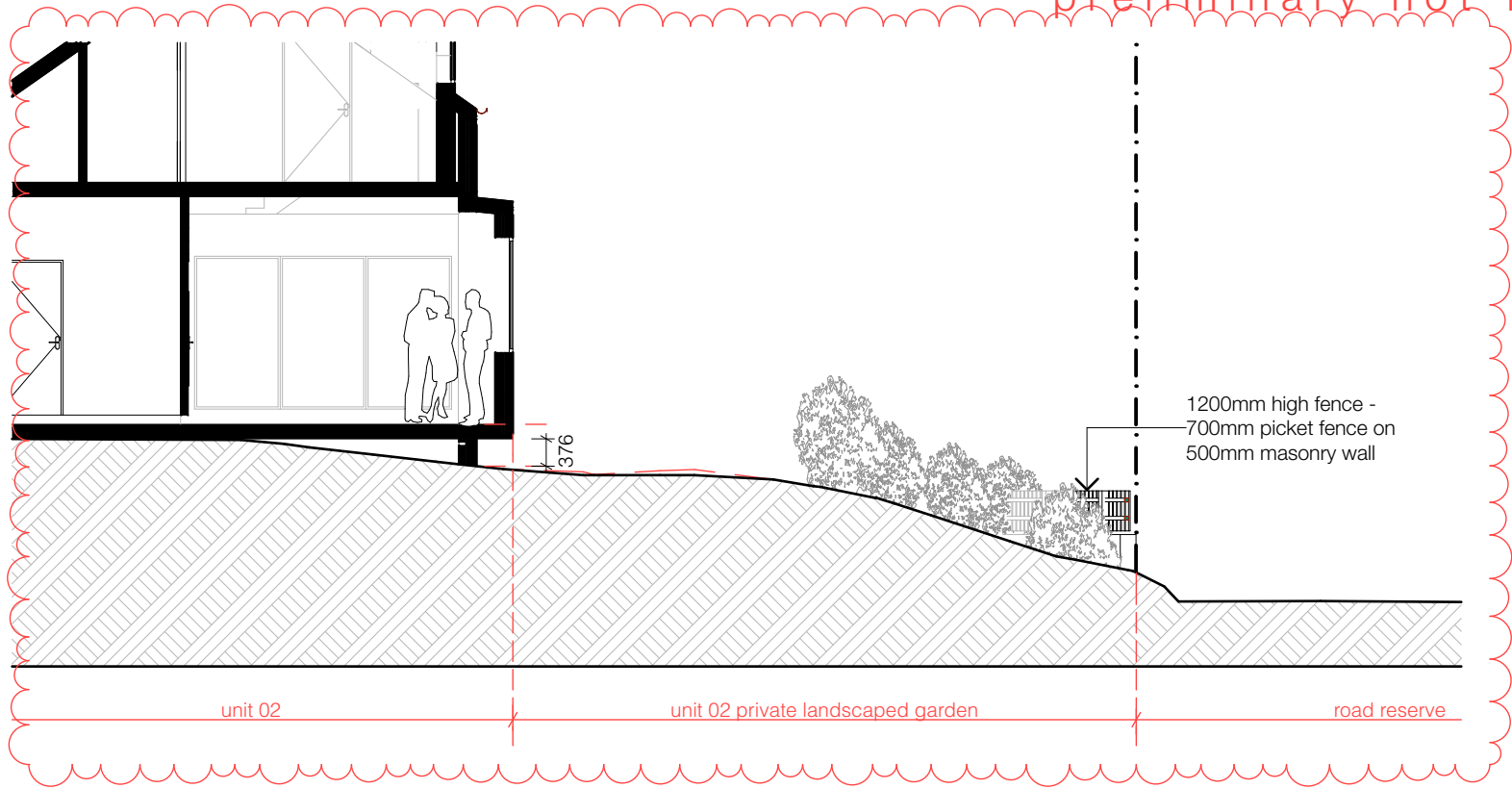


01 | section c  
1:200

architect	general notes	finishes	fixtures	date	issue	amendment	title
<div>integrated DESIGN group</div> <div>architects   bathurst penrith sydney</div> <div><div><div><div></div><div></div><div></div></div><div>Member Australian Institute of Architects</div></div><div><div>copyright</div><div>IntegratedDESIGNgroup p/l</div><div>abn 84 116 006 329</div></div><div><div>bathurst   02 6332 6206</div><div>penrith   02 4732 4430</div><div>sydney   02 9784 6100</div></div><div><div>nominated architects</div><div>tony moburney reg#5273</div><div>simon thorne reg#7093</div></div><div><div>info@idgarchitects.com.au</div><div>www.idgarchitects.com.au</div></div></div>	1. figured dimensions take precedence over scaled drawings	BDRY boundary	b basin	22/5/20	AA	issue for consultant co-ordination	sections 2 multi-dwelling development glenstone group   8 linksview ave, LEONAY <div>project ref: GLE18074</div> <div>drawn: TG   SL</div> <div>checked: AE</div> <div>scale: 1:200 @ a3</div> <div><div></div><div>DA</div><div>3001</div><div>issue</div><div>AC</div></div>
	2. contractors to check and verify all levels datum and dimensions on site	BOE brick on edge	b/head bulkhead	5/6/20	AB	ISSUE FOR DA	
	3. all materials and workmanship to be in accordance with current written manufacturers instructions local regulations and SAA codes	BPB bagged paint brickwork	cs cavity sliding door	12/8/20	AC	revised issue for DA	
	4. conflicting information to be brought to notice of the architect and clarification sought before proceeding with any works	CF colorbond fascia	dw dryer				
	5. all drawings are not for construction and are subject to further design development, consultant input, council and legislative requirements.	CF comp. fibre cement	edh exhaust fan				
		CONC concrete	fr freezer				
		CJ control joint	fw floor waste				
		CT ceramic tile	hc hollow core door				
		CPT carpet	hr handrail				
		CRT concrete roof tile	lb letterbox				
		COG colorbond quad gutter	m mirror				
		DP downpipe	mw microwave				
		EGL existing ground line	oh overhead				
		EMB electrical meterboard	p pentry				
			ref refrigerator				
		FB face brick	rh rangehood				
		FC fibre cement	sc solid core door				
		FFL finished floor level	sh soap holder				
		F fixed glass	ss stainless steel sink				
		FGL finished ground line	st stove				
		GM gas meter	shwr shower				
		HWS hot water service	t tub				
		plasterboard	tr towel rail				
		PCR painted cement render	trh toilet roll holder				
		PFB painted face brick	typ. typical				
		PFC painted fibre cement	wc water closet				
		PWB painted weatherboard	wm washing machine				
		SC soldier course	v vinyl				
		timber floor boards	vp vent pipe				
		tamcootea roof tile	uo under bench oven				
		water meter	wo wall oven				



preliminary not for construction



architect

general notes

finishes

fixtures

date

issue

amendment

title

integrated DESIGN group  
architects | bathurst penrith sydney



copyright  
integratedDESIGNgroup p/l  
abn 84 115 006 329  
bathurst | 02 6332 6206  
penrith | 02 4732 4430  
sydney | 02 9764 6100  
nominated architects  
tony mcburney reg#5273  
simon thorne reg#7093  
info@idgarchitects.com.au  
www.idgarchitects.com.au

- figured dimensions take precedence over scaled drawings
- contractors to check and verify all levels datum and dimensions on site
- all materials and workmanship to be in accordance with current written manufacturers instructions local regulations and SAA codes
- conflicting information to be brought to notice of the architect and clarification sought before proceeding with any works
- all drawings are not for construction and are subject to further design development, consultant input, council and legislative requirements.

BDRY	boundary	FB	face brick
BOE	brick on edge	FC	fibre cement
BPB	bagged paint brickwork	FFL	finished floor level
CCR	corrugated steel roof	F	fixed glass
CF	colorbond fascia	FGL	finished ground line
CFC	comp. fibre cement	GM	gas meter
CONC	concrete	HWS	hot water service
CJ	control joint	PB	plasterboard
CT	ceramic tile	PCR	pointed cement render
CPT	carpet	PFB	pointed face brick
CRT	concrete roof tile	PFC	pointed fibre cement
COG	colorbond quad gutter	PWB	pointed weatherboard
DP	downpipe	SC	solder course
DP&S	downpipe & spreader	TFB	timber floor boards
EGL	existing ground line	TFC	terra-cotta roof tiles
EMB	electrical meterboard	WM	water meter

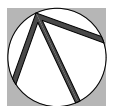
b	basin	rh	rangehood
b/head	bulkhead	sc	solid core door
cs	cavity sliding door	sh	soap holder
dry	dryer	ss	stainless steel sink
dw	dishwasher	st	stove
exh	exhaust fan	shwr	shower
fr	freezer	t	tub
fw	floor waste	tr	towel rail
hc	hollow core door	trh	toilet roll holder
hr	handrail	typ.	typical
lb	letterbox	wc	water closet
m	mirror	wm	washing machine
mw	microwave	v	vent pipe
o/h	overhead	vp	vent pipe
p	pantry	uo	under bench oven
ref	refrigerator	wo	wall oven

22/5/20	AA	issue for consultant co-ordination
5/6/20	AB	ISSUE FOR DA
12/8/20	AC	revised issue for DA

threshold sections

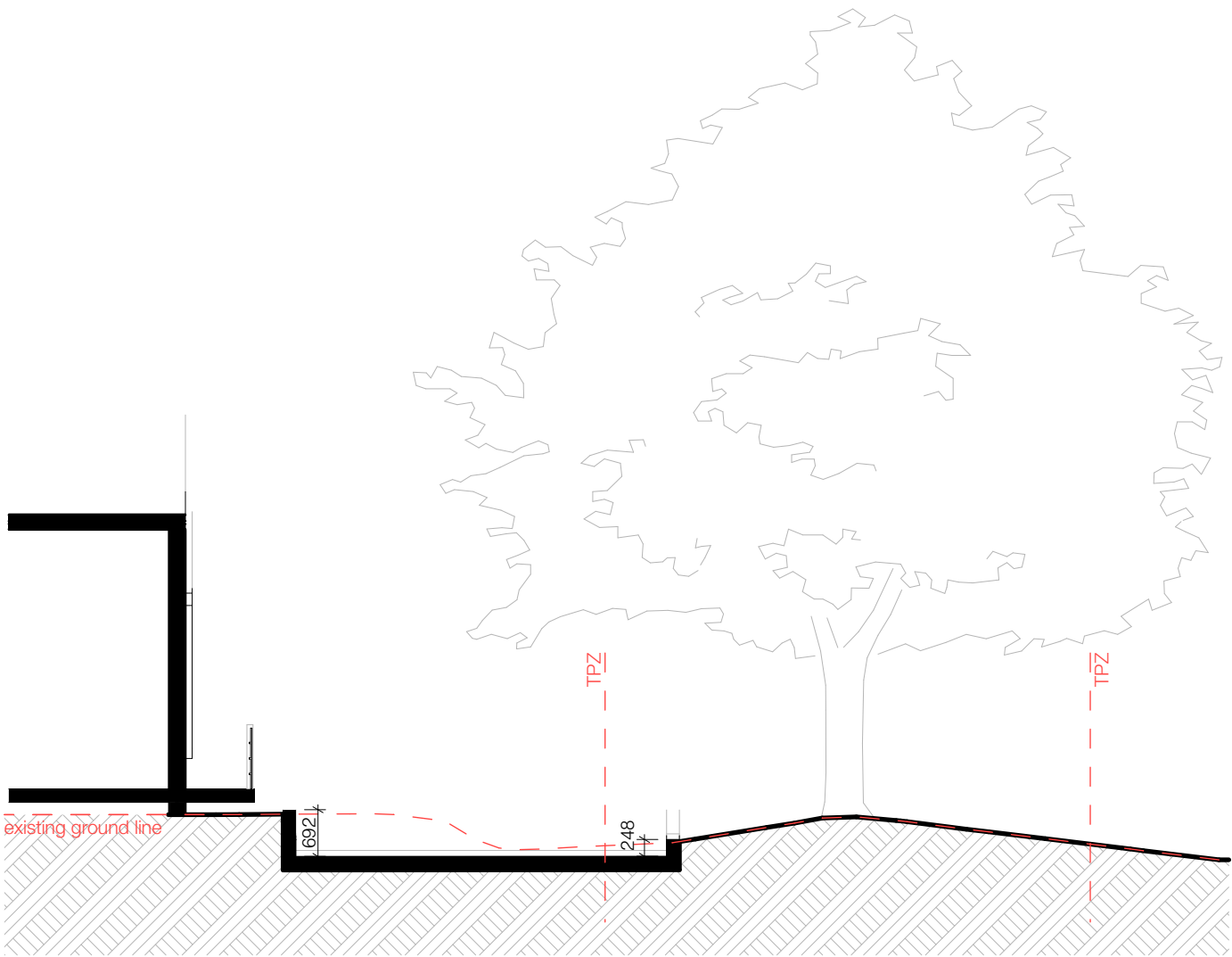
multi-dwelling development  
glenstone group | 8 linksvie ave, LEONAY

project ref: GLE18074  
drawn: TG | SL  
checked: AE  
scale: @ a3

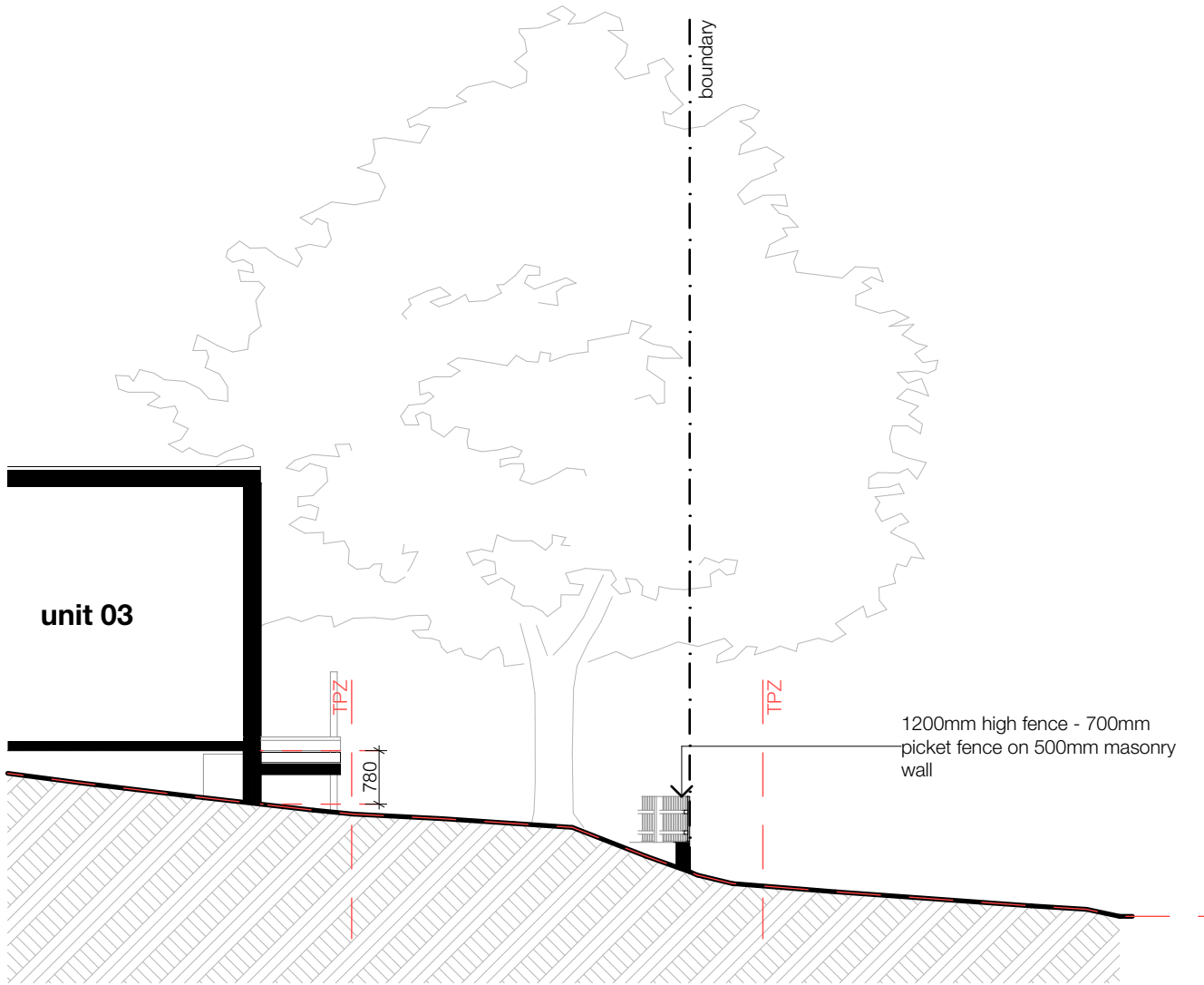


DA  
9201

issue  
AC



01 | tree No. 7



02 | tree No. 2

architect

integrated **DESIGN** group  
architects | bathurst penrith sydney



copyright  
integratedDESIGNgroup p/l  
abn 84 115 006 329

nominated architects  
tony mcburney reg#5273  
simon thorne reg#7093

bathurst | 02 6332 6206  
penrith | 02 4732 4430  
sydney | 02 9764 6100

info@idgarchitects.com.au  
www.idgarchitects.com.au

general notes

- figured dimensions take precedence over scaled drawings
- contractors to check and verify all levels datum and dimensions on site
- all materials and workmanship to be in accordance with current written manufacturers instructions local regulations and SAA codes
- conflicting information to be brought to notice of the architect and clarification sought before proceeding with any works
- all drawings are not for construction and are subject to further design development, consultant input, council and legislative requirements.

finishes

BDRY	boundary	FB	face brick
BOE	brick on edge	FC	fibre cement
BPB	bagged paint brickwork	FFL	finished floor level
CCR	corrugated steel roof	F	fixed glass
CF	colorbond fascia	FGL	finished ground line
CFC	comp. fibre cement	GM	gas meter
CONC	concrete	HWS	hot water service
CJ	control joint	PB	plasterboard
CT	ceramic tile	PCR	plasterboard
CPT	carpet	PFB	plasterboard
CRT	concrete roof tile	PFC	plasterboard
COG	colorbond quad gutter	PWB	plasterboard
DP	downpipe	SC	solder course
DP&S	downpipe & spreader	TFB	timber floor boards
EGL	existing ground line	TFC	terracotta roof tiles
EMB	electrical meterboard	WM	water meter

fixtures

b	basin	rh	rangehood
b/head	bulkhead	sc	solid core door
cs	cavity sliding door	sh	soap holder
dry	dryer	ss	stainless steel sink
dw	dishwasher	st	stove
exh	exhaust fan	shwr	shower
fr	freezer	t	tub
fw	floor waste	tr	towel rail
hc	hollow core door	trh	toilet roll holder
hr	handrail	typ.	typical
lb	letterbox	wc	water closet
m	mirror	wm	washing machine
mw	microwave	v	vinyl
o/h	overhead	vp	vent pipe
p	pantry	uo	under bench oven
ref	refrigerator	wo	wall oven

date

issue

amendment

7/8/20 AA Issue for consultant co-ordination  
12/8/20 AB revised issue for DA

title

tree sections

multi-dwelling development  
glenstone group | 8 linksview ave, LEONAY

project ref: GLE18074  
drawn: TG | SL  
checked: AE  
scale: @ a3

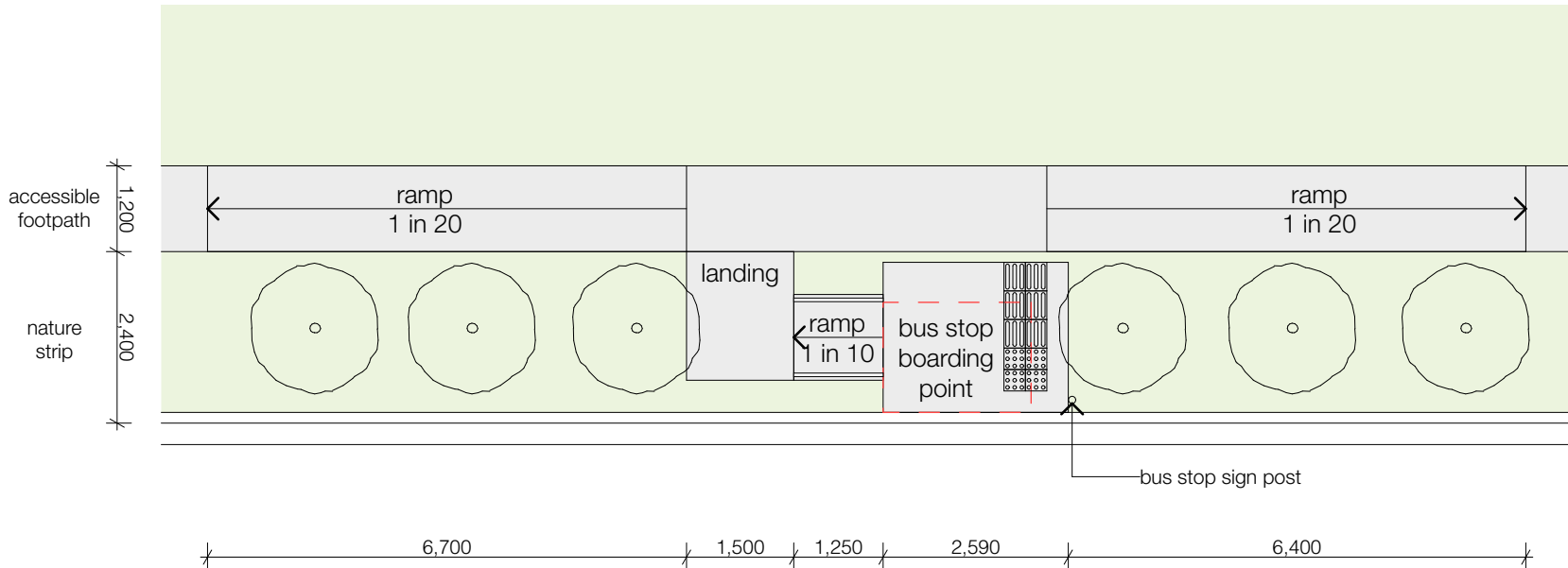


DA  
9202

issue  
AB

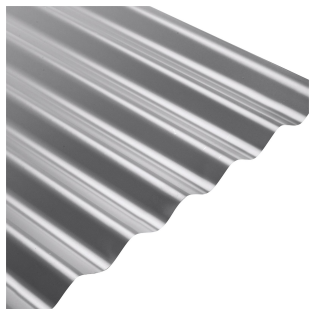


preliminary not for construction



l e o n a y p a r a d e

architect	general notes	finishes	fixtures	date	issue	amendment	title
<div><div>integrated DESIGN group</div><div>architects   bathurst penrith sydney</div></div> <div><div><div><div></div><div>Member Australian Institute of Architects</div></div><div><div>copyright integratedDESIGNgroup p/l abn 84 115 006 329</div><div><div>bathurst   02 6332 6206 penrith   02 4732 4430 sydney   02 9764 6100</div><div><div>nominated architects tony mcburney reg#5273 simon thorne reg#7093</div><div><div>info@idgarchitects.com.au www.idgarchitects.com.au</div></div></div></div></div></div></div>	1. figured dimensions take precedence over scaled drawings	BDRY boundary BOE brick on edge BPB bagged paint brickwork CCR corrugated steel roof CF colorbond fascia CFC comp. fibre cement CONC concrete CJ control joint CT ceramic tile CPT carpet CRT concrete roof tile COG colorbond quad gutter DP downpipe DP&S downpipe & spreader EGL existing ground line EMB electrical meterboard	FB face brick FC fibre cement FFL finished floor level F fixed glass FGL finished ground line GM gas meter HWS hot water service PB plasterboard PCR painted cement render PFB painted face brick PFC painted fibre cement PWB painted weatherboard SC soldier course TFB timber floor boards TRC terracotta roof tiles WM water meter	b basin b/head bulkhead cs cavity sliding door dry dryer dw dishwasher exh exhaust fan fr freezer fw floor waste hc hollow core door hr handrail lb letterbox m mirror mw microwave o/h overhead p pantry ref refrigerator	rh rangehood sc solid core door sh soap holder ss stainless steel sink st stove shwr shower t tub tr towel rail trh toilet roll holder typ. typical wc water closet wm washing machine v vinyl vp vent pipe uo under bench oven wo wall oven	12/8/20 AA revised issue for DA	<div><div>bus stop compliance</div><div>multi-dwelling development glenstone group   8 linksview ave, LEONAY</div><div><div>project ref: GLE18074 drawn: TG   SL checked: AE scale: @ a3</div><div><div></div><div><div>DA 9203</div></div><div><div>issue AA</div></div></div></div></div>



01  
grey custom orb roof sheeting



02  
white weatherboard cladding



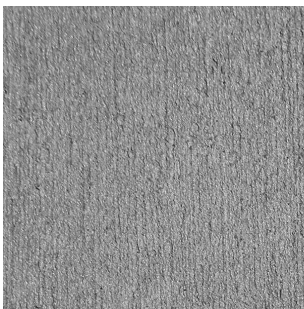
03  
dark grey finish



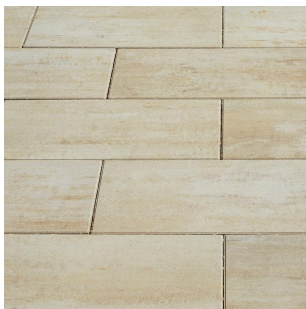
04  
grey FC cladding



05  
recycled brick  
external walls & subfloor



06  
concrete



07  
external pavers

Member  
Australian  
Institute of  
Architects

copyright  
integratedDESIGNgroup p/l  
abn 84 115 006 329

nominated architects  
tony mcburney reg#5273  
simon thorne reg#7093

info@idgarchitects.com.au  
www.idgarchitects.com.au

bathurst | 02 6332 6206  
penrith | 02 4732 4430  
sydney | 02 9764 6100

general notes

1. figured dimensions take precedence over scaled drawings

2. contractors to check and verify all levels datum and dimensions on site

3. all materials and workmanship to be in accordance with current written manufacturers instructions local regulations and SAA codes

4. conflicting information to be brought to notice of the architect and clarification sought before proceeding with any works

5. all drawings are not for construction and are subject to further design development, consultant input, council and legislative requirements.

finishes

BDRY  
BOE  
BPB  
CCR  
CF  
CFC  
CONC  
CJ  
CT  
CPT  
CRT  
COG  
DP  
DP&S  
EGL  
EMB

boundary  
brick on edge  
bagged paint brickwork  
corrugated steel roof  
colorbond fascia  
comp. fibre cement  
concrete  
control joint  
ceramic tile  
carpet  
concrete roof tile  
colorbond quad gutter  
downpipe  
downpipe & spreader  
existing ground line  
electrical meterboard

FB  
FC  
FFL  
F  
FGL  
GM  
HWS  
PB  
PCR  
PFB  
PFC  
PWB  
SC  
TFB  
TRC  
WM

face brick  
fibre cement  
finished floor level  
fixed glass  
finished ground line  
gas meter  
hot water service  
plasterboard  
pointed cement render  
pointed face brick  
pointed fibre cement  
pointed weatherboard  
solder course  
timber floor boards  
terraotta roof tiles  
water meter

fixtures

b  
b/head  
cs  
dry  
dw  
exh  
fr  
fw  
hc  
hr  
lb  
m  
mw  
o/h  
p  
ref

basin  
bulkhead  
cavity sliding door  
dryer  
dishwasher  
exhaust fan  
freezer  
floor waste  
hollow core door  
handrail  
letterbox  
mirror  
microwave  
overhead  
pantry  
refrigerator

rh  
sc  
sh  
ss  
st  
shwr  
t  
tr  
trh  
typ.  
wc  
wm  
v  
vp  
uo  
wo

rangehood  
solid core door  
soap holder  
stainless steel sink  
stove  
shower  
tub  
towel rail  
toilet roll holder  
typical  
water closet  
washing machine  
vinyl  
vent pipe  
under bench oven  
wall oven

date

22/5/20  
5/6/20  
12/8/20

issue

AA  
AB  
AC

amendment

issue for consultant co-ordination  
ISSUE FOR DA  
revised issue for DA

finishes schedule

multi-dwelling development  
glenstone group | 8 linksview ave, LEONAY

project ref:  
drawn:  
checked:  
scale:

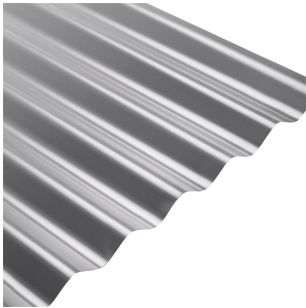
GLE18074  
TG | SL  
AE  
@ a3

DA  
9600

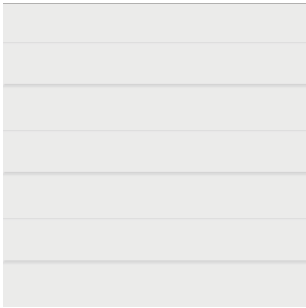
issue

AC





01  
grey custom orb roof sheeting



02  
white weatherboard cladding



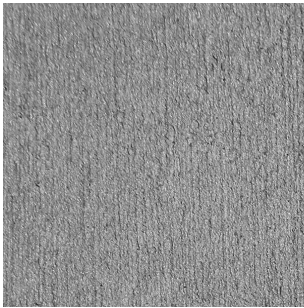
03  
dark grey finish



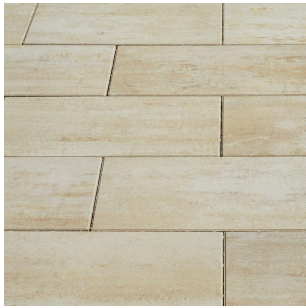
04  
grey FC cladding



05  
recycled brick  
external walls & subfloor



06  
concrete



07  
external pavers

architect

integrated DESIGN group

architects | bathurst penrith sydney

Member  
Australian  
Institute of  
Architects

copyright  
integratedDESIGNgroup p/l  
abn 84 115 006 329

bathurst | 02 6332 6206  
penrith | 02 4732 4430  
sydney | 02 9764 6100

nominated architects  
tony mcburney reg#5273  
simon thorne reg#7093

info@idgarchitects.com.au  
www.idgarchitects.com.au

general notes

- figured dimensions take precedence over scaled drawings
- contractors to check and verify all levels datum and dimensions on site
- all materials and workmanship to be in accordance with current written manufacturers instructions local regulations and SAA codes
- conflicting information to be brought to notice of the architect and clarification sought before proceeding with any works
- all drawings are not for construction and are subject to further design development, consultant input, council and legislative requirements.

finishes

BDRY	boundary	FB	face brick
BOE	brick on edge	FC	fibre cement
BPB	bagged paint brickwork	FFL	finished floor level
CCR	corrugated steel roof	F	fixed glass
CF	colorbond fascia	FGL	finished ground line
CFC	comp. fibre cement	GM	gas meter
CONC	concrete	HWS	hot water service
CJ	control joint	PB	plasterboard
CT	ceramic tile	PCR	pointed cement render
CPT	carpet	PFB	pointed face brick
CRT	concrete roof tile	PFC	pointed fibre cement
COG	colorbond quad gutter	PWB	pointed weatherboard
DP	downpipe	SC	solder course
DP&S	downpipe & spreader	TFB	timber floor boards
EGL	existing ground line	TRC	terraotta roof tiles
EMB	electrical meterboard	WM	water meter

fixtures

b	basin	rh	rangehood
b/head	bulkhead	sc	solid core door
cs	cavity sliding door	sh	soap holder
dry	dryer	ss	stainless steel sink
dw	dishwasher	st	stove
exh	exhaust fan	shwr	shower
fr	freezer	t	tub
fw	floor waste	tr	towel rail
hc	hollow core door	trh	toilet roll holder
hr	handrail	typ.	typical
lb	letterbox	wc	water closet
m	mirror	wm	washing machine
mw	microwave	v	vinyl
o/h	overhead	vp	vent pipe
p	pantry	uo	under bench oven
ref	refrigerator	wo	wall oven

date

date	issue	amendment
22/5/20	AA	issue for consultant co-ordination
5/6/20	AB	ISSUE FOR DA
12/8/20	AC	revised issue for DA

title

finishes schedule 2

multi-dwelling development  
glenstone group | 8 linksview ave, LEONAY

project ref: GLE18074

drawn: TG | SL

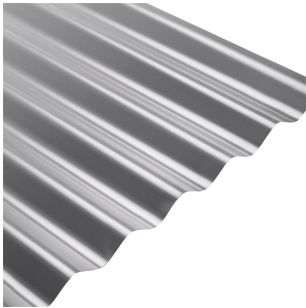
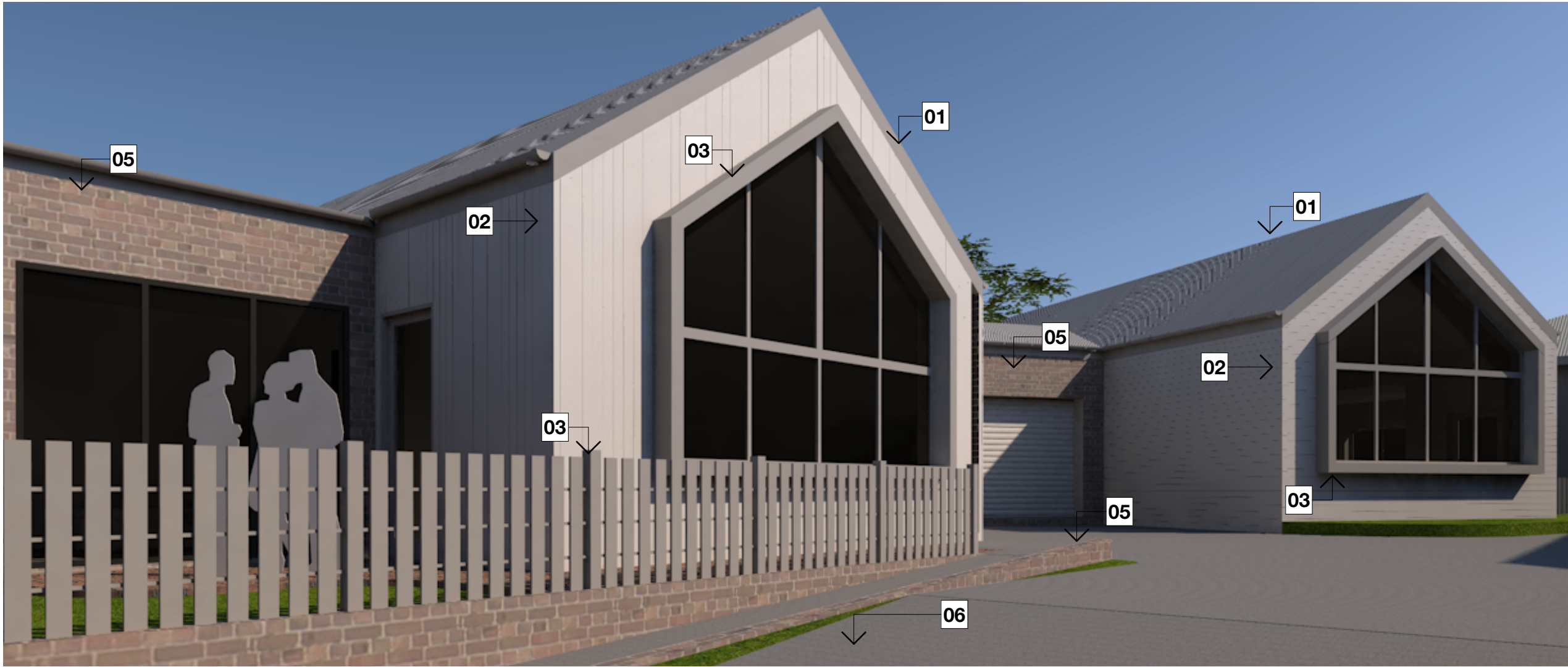
checked: AE

scale: @ a3

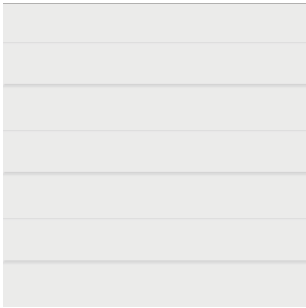
DA  
9601

issue  
AC





01  
grey custom orb roof sheeting



02  
white weatherboard cladding



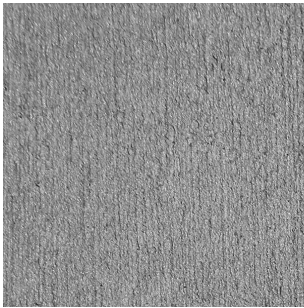
03  
dark grey finish



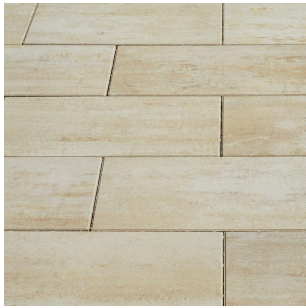
04  
grey FC cladding





05  
recycled brick  
external walls & subfloor



06  
concrete



07  
external pavers

architect	general notes	finishes	fixtures	date	issue	amendment	title
<div>integrated DESIGN group</div> <div>architects   bathurst penrith sydney</div> <div><div>Member Australian Institute of Architects</div><div>copyright integratedDESIGNgroup p/l abn 84 115 006 329</div><div>nominated architects tony mcburney reg#5273 simon thorne reg#7093</div><div>bathurst   02 6332 6206 penrith   02 4732 4430 sydney   02 9764 6100</div><div>info@idgarchitects.com.au www.idgarchitects.com.au</div></div>	1. figured dimensions take precedence over scaled drawings	BDRY boundary	b basin	22/5/20	AA	issue for consultant co-ordination	<div>finishes schedule 3</div> <div>multi-dwelling development glenstone group   8 linksview ave, LEONAY</div> <div>project ref: GLE18074</div> <div>drawn: TG   SL</div> <div>checked: AE</div> <div>scale: @ a3</div> <div><div>DA 9602</div><div>issue AC</div></div>
	2. contractors to check and verify all levels datum and dimensions on site	BOE brick on edge	b/head bulkhead	5/6/20	AB	ISSUE FOR DA	
	3. all materials and workmanship to be in accordance with current written manufacturers instructions local regulations and SAA codes	BPB bagged paint brickwork	cs cavity sliding door	12/8/20	AC	revised issue for DA	
	4. conflicting information to be brought to notice of the architect and clarification sought before proceeding with any works	CCR corrugated steel roof	dry dryer				
	5. all drawings are not for construction and are subject to further design development, consultant input, council and legislative requirements.	CF colorbond fascia	dw dishwasher				
		CF comp. fibre cement	exh exhaust fan				
		CONC concrete	fr freezer				
		CJ control joint	fw floor waste				
		CT ceramic tile	hc hollow core door				
		CPT carpet	hr handrail				
		CRT concrete roof tile	lb letterbox				
		COG colorbond quad gutter	m mirror				
		DP downpipe	mw microwave				
		DP&S downpipe & spreader	o/h overhead				
		EGL existing ground line	p pantry				
		EMB electrical meterboard	ref refrigerator				
		FB face brick	rh rangehood				
		FC fibre cement	sc solid core door				
		FFL finished floor level	sh soap holder				
		F fixed glass	ss stainless steel sink				
		FGL finished ground line	st stove				
		GM gas meter	shwr shower				
		HWS hot water service	t tub				
		PB plasterboard	tr towel rail				
		PCR painted cement render	trh toilet roll holder				
		PFB painted face brick	typ. typical				
		PFC painted fibre cement	wc water closet				
		PWB painted weatherboard	wm washing machine				
		SC soldier course	v vinyl				
		TFB timber floor boards	vp vent pipe				
		TFC terracotta roof tiles	uo under bench oven				
		WM water meter	wo wall oven				