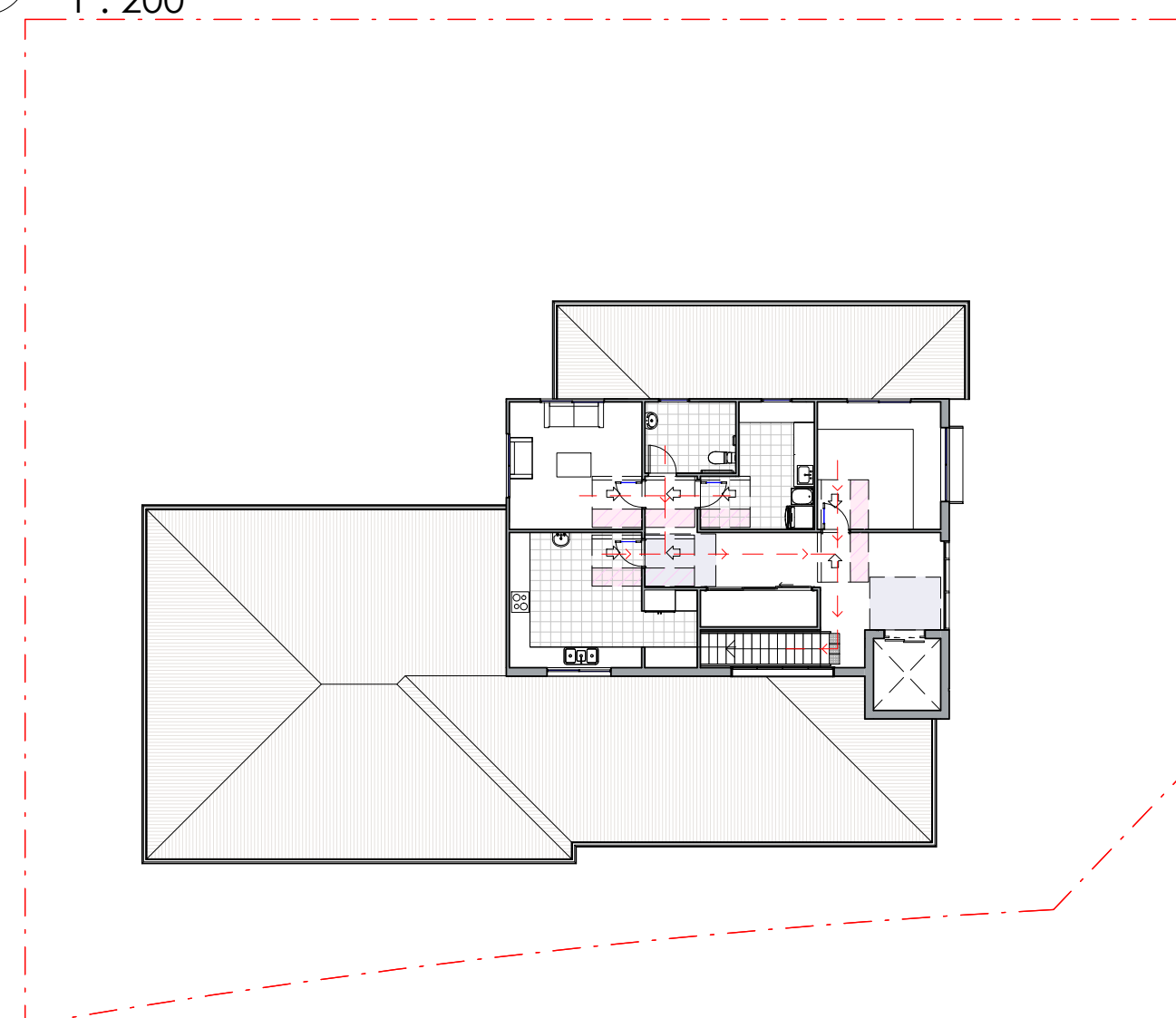
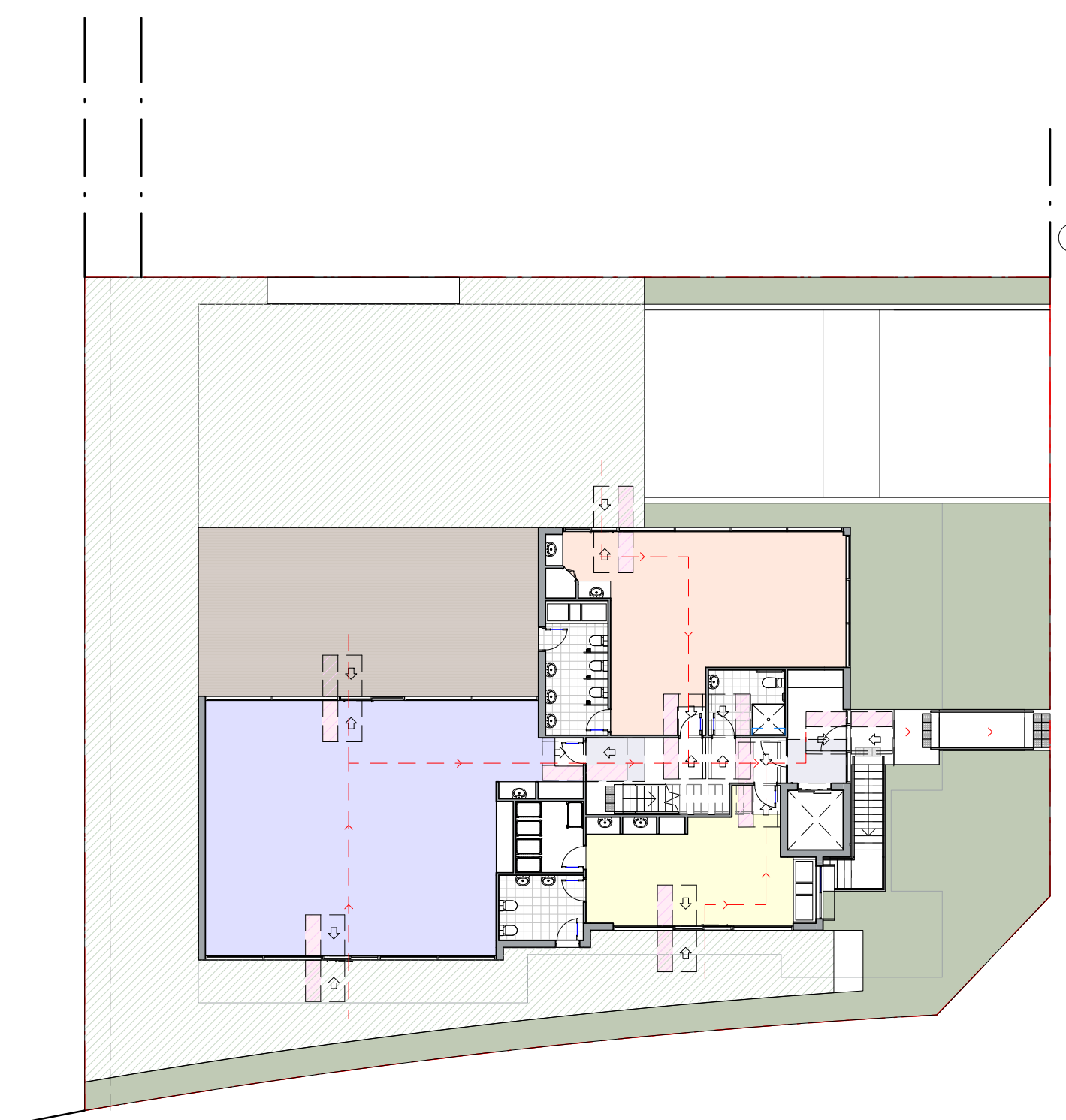


1 BASEMENT FLOOR EVAC
1 : 200



3 FIRST FLOOR EVAC
1 : 200



2 GROUND FLOOR EVAC
1 : 200



LEGEND

- = EVACUATION LINE
- = ASSEMBLY AREA
- = EXIT SIGN

1. Remain calm. Do not panic
2. Leave building by designed exit or nearest safe exit
3. Proceed to the closest ASSEMBLY AREA (see map)
4. Remain at ASSEMBLY AREA until otherwise directed by staff / Emergency Services

FIRE OPERATION

- Stay back from fire 2-3 metres
- Check Pressure Gauge
- Ensure door or clear exit path is directly behind you
- use the **PASS** method

- P** - pull pin
- A** - aim at edge of fire
- S** - squeeze the handle
- S** - sweep the fire

IN CASE OF EMERGENCY

FIRE / AMBULANCE / POLICE

DIAL 000