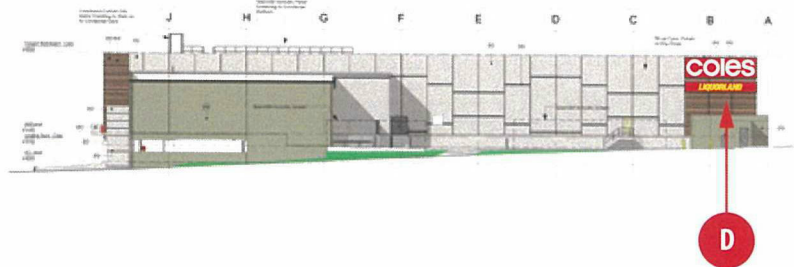
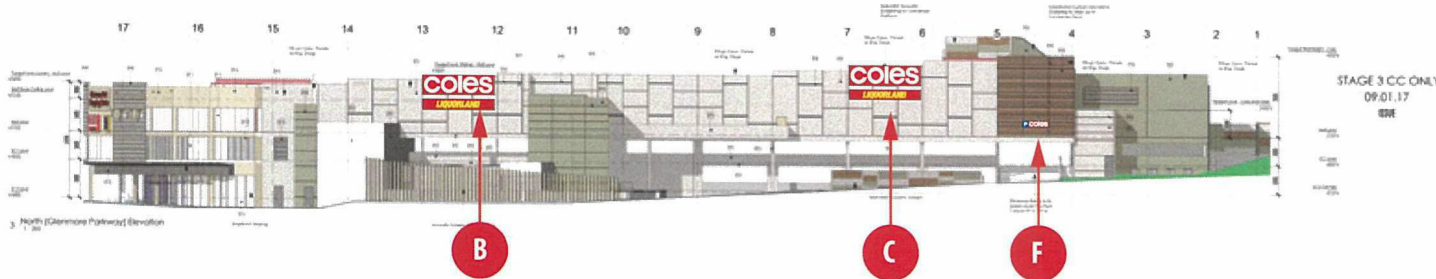
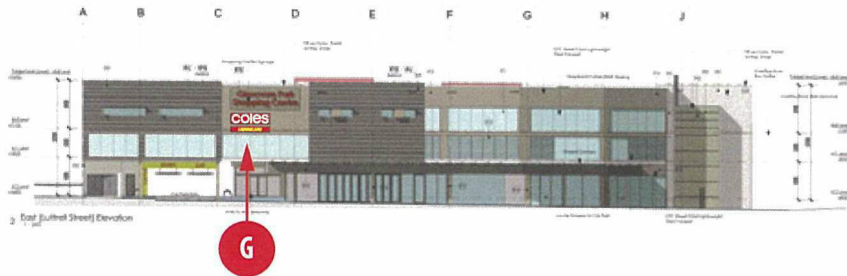
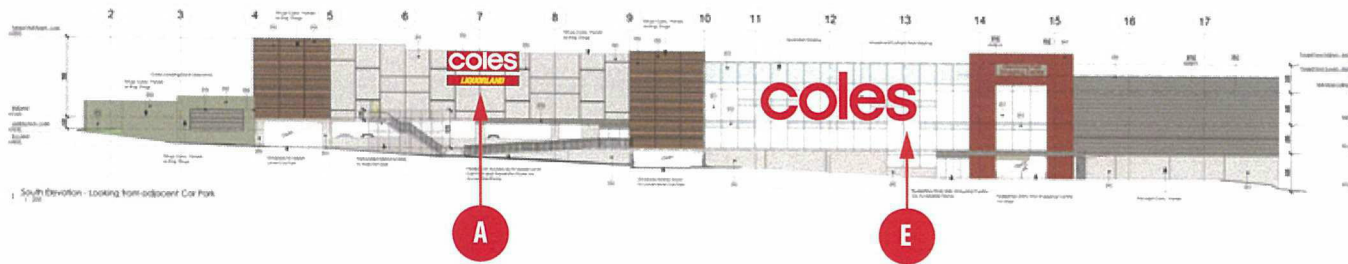



APPENDIX I)



SIGN DESCRIPTION :	EXISTING POWER SUPPLY:	N/A	LESSOR APPROVED:	STORE #:	STORE NAME:			
	POWER SUPPLY DETAILS:	N/A			GLENMORE PARK			
EXISTING CONDITIONS:	ACCESS REQUIREMENTS:	N/A			STORE ADDRESS:	REF #:	AUDIT	SIGN #:
	TRAFFIC MANAGEMENT REQUIRED:	N/A			GLENMORE RIDGE DRIVE, GLENMORE PARK NSW 2745	DRAWN BY:	FOREFRONT - BC	-
PROPOSED SIGN DETAILS:	KNOWN HAZARDS (POWERLINES ETC):	N/A	COUNCIL APPROVED:			REVISION:	01	
	NOTES: INSERT NOTES				THESE DRAWINGS AND DIMENSIONS ARE FOR DESIGN INTENT AND ARE NOT FOR PRODUCTION. THE SIGN FABRICATOR SHALL VERIFY AND BE RESPONSIBLE FOR ALL FABRICATION/BUILD-PRINT SPECIFIC REQUIREMENTS, PRINTERS PROOFS AND SHOPFITTERS SUPPLIED/CONSTRUCTION DRAWINGS WHERE REQUIRED. THESE MUST BE APPROVED BY COLES SIGNAGE TEAM PRIOR TO FABRICATION COMMENCING.	ISSUE DATE:	06 06 17	



SIGN A,B,C & D

NEW ILLUMINATED FLEXFACE LIGHTBOX.

COLES: 8038 X 2200, QTY 4 A3.5 Reference within Coles signage guidelines

LL: 8038 X 1100, QTY 4



SIGN F

NEW ACM PANEL WITH
LAMINATED DIGITAL PRINT APPLIED
2400 X 575 MMH

B1.1 Reference within Coles signage guidelines



SIGN G

NEW ILLUMINATED FLEXFACE LIGHTBOX.

COLES: 4383 X 1200, QTY 1 A3.2 Reference within Coles signage guidelines

LL: 4383 X 600, QTY 1


coles

SIGN E

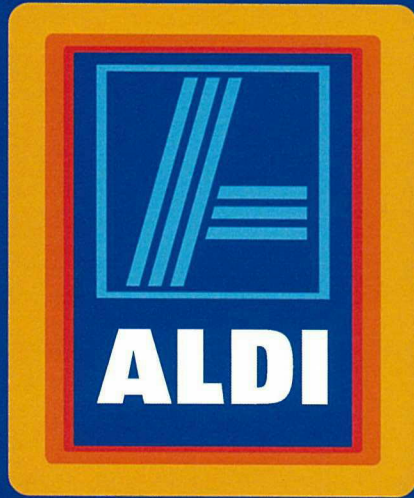
COLES RED VINYL WINDOW GRAPHICS

SIZE: 21400 X 6670 MMH

G1.1 Reference within Coles signage guidelines

SIGN DESCRIPTION :	EXISTING POWER SUPPLY:	N/A	LESSOR APPROVED:	STORE #:	STORE NAME:			
EXISTING CONDITIONS:	POWER SUPPLY DETAILS:	N/A			GLENMORE PARK			
	ACCESS REQUIREMENTS:	N/A						
	TRAFFIC MANAGEMENT REQUIRED:	N/A			STORE ADDRESS:			
PROPOSED SIGN DETAILS:	KNOWN HAZARDS (POWERLINES ETC):	N/A	COUNCIL APPROVED:	GLENMORE RIDGE DRIVE, GLENMORE PARK NSW 2745		REF #:	AUDIT	SIGN #:
	NOTES: INSERT NOTES					DRAWN BY:	FOREFRONT - BC	
						REVISION:	01	
						ISSUE DATE:	06 06 17	

THESE DRAWINGS AND DIMENSIONS ARE FOR DESIGN INTENT AND ARE NOT FOR PRODUCTION. THE SIGN FABRICATOR SHALL VERIFY AND BE RESPONSIBLE FOR ALL FABRICATION/INSTALLATION/PRINTING REQUIREMENTS. PRINTERS PROOFS AND SHOPPLOTTER SUPPLIED CONSTRUCTION DRAWINGS WHERE REQUIRED. THESE MUST BE APPROVED BY COLES SIGNAGE TEAM PRIOR TO FABRICATION/COMMENCING.



Signage Proposal Glenmore, NSW

SignManager

A Significant Advantage

www.signmanager.com.au

Rev.	Description	Date
A	Preliminary Design	01/06/17

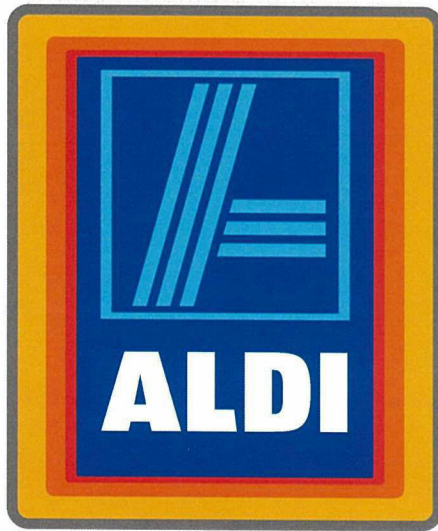
CLIENT SIGN OFF FOR PRODUCTION

SIGN:..... DATE:.....

ALD-AR-1236

REV A

Scale	Drawn	Date	Page
As Shown	GB	01 06 2017	1



Front Elevation

Sign 1

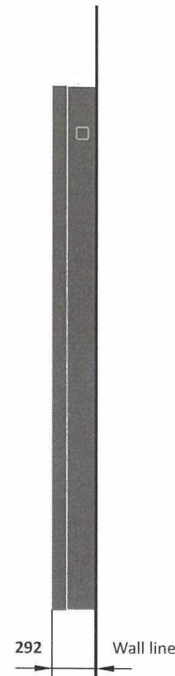
Sign 2

Non-Standard Gable Sign G1

Size - 3000mm W x 3600mm H

Qty - 1

Details - Refer to ALDI Signage Manual for Details.



Side Elevation



Front Elevation

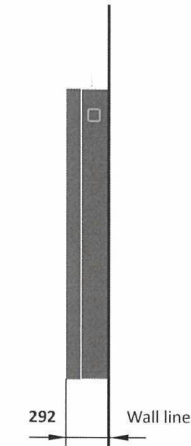
Sign 3

Non-standard Gable Sign

Size - 1670mm W x 2000mm H

Qty - 1

Details - Refer to ALDI Signage Manual for Details.



Side Elevation



Sign 4

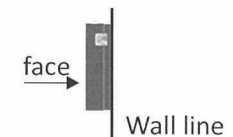
BHCP

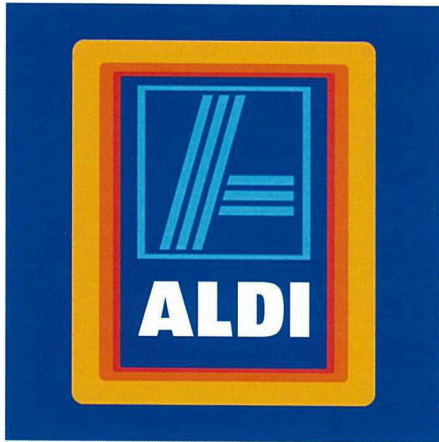
Size - 2400mm W x 600mm H - TBC

Qty - 1

Details - Refer to ALDI Signage Manual for construction of sign. Confirm size, installation details and clearance on site prior to production.

Note - Architect to confirm clearance height





Front Elevation

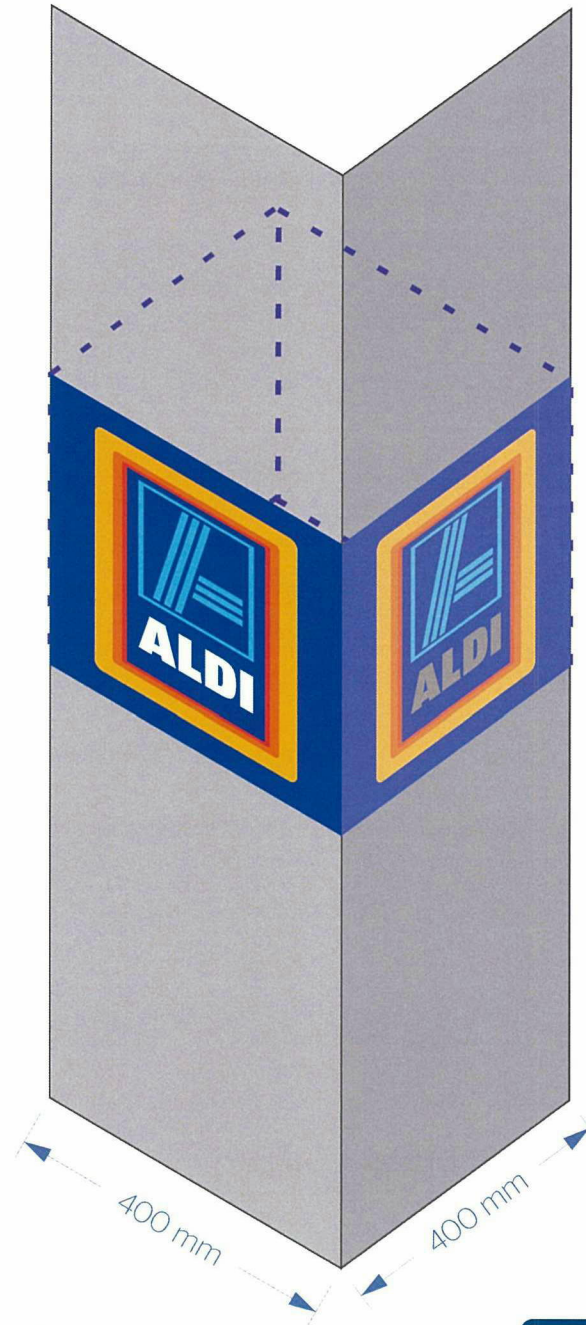
Sign 5

Column sign

Size - 400x400x400mm TBC

Qty - 1 (wrap all 4 sides)

Details - Supply and install folded dibond ultramarine blue intracut ACM panel to existing concrete column. Glue fixed to column, no visible fixings.



SignManager

Client
ALDI

Site Name
Glenmore Park

Site Address
Glenmore Park Shopping Centre

Description
New Signage Proposal

Status
Not For Construction

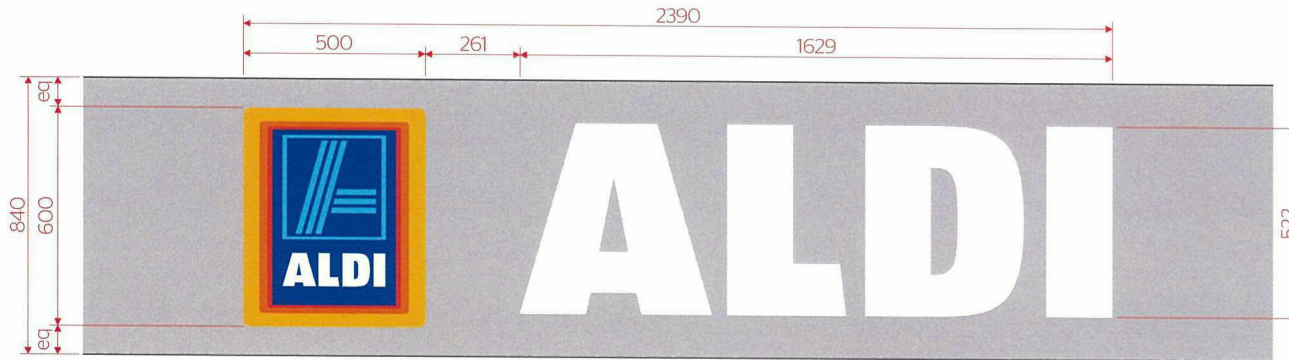
ALD-AR-1236

REV A

Scale As Shown Drawn GB Date 01/06/2017 Page 4

Please note (1) Measurements shown on this drawing are estimates only and are subject to confirmation on site prior to manufacture. (2) This artwork is prepared to demonstrate the visual intention of the project and is subject to final site measurements and scaled drawings. (3) Copyright ownership of this document remains with SignManager at all times. Use of the material contained herein, or reproduction without written permission from SignManager is strictly prohibited. Breach of this condition may result in legal proceedings being initiated against responsible parties.

www.signmanager.com.au



Sign 6 Sign 7

3D Shopfront Sign

Letter Height - Nom. 522mm

Overall Size - 2390mm W x 600mm H

Qty - 2 (TBC)

Details - Supplied fabricated acrylic letters illuminated by LED's. ALDI Logo & individual letters "ALDI". No visible wiring to each letter & logo. The sign will be delivered in a kit form ready for installation and electrical connection by the sign contractor. Power supplied at location by builder.

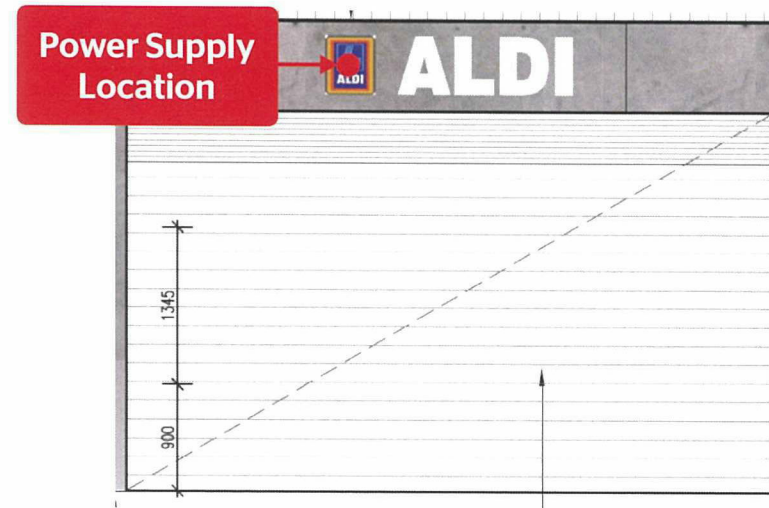
SIGNAGE POWER SUPPLY - Requirements (INTERNAL MALL)

Shopfront Bulkhead Signs - Lessor or Builder to provide:

- 240 Volt Power feed to be supplied to AREA BEHIND LOGO with a double 3 pin plug outlet
- Any time clocks or feeds back to main power supply
- Isolator switch
- Gap behind bulkhead cladding of 100mm

Shopfront Bulkhead Signs - SignManager to provide:

- Transformers to convert power for LED signs from 240 volts
- Drill and install individual letters to bulkhead and feed wires behind the sign to each letter.
- Connection to power at the time of sign install



Typical Elevation

SignManager

Client
ALDI

Site Name
Glenmore Park

Site Address
Glenmore Park Shopping Centre

Description
New Signage Proposal

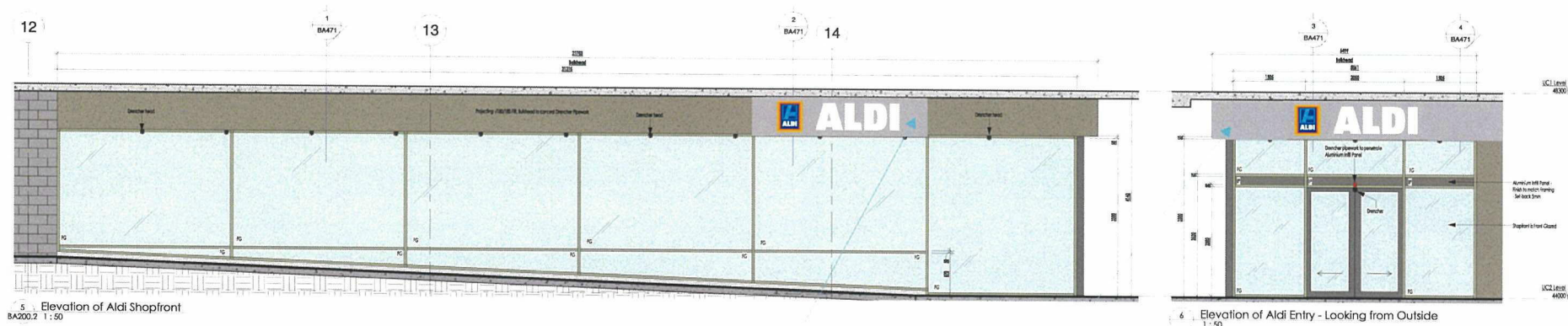
Status
Not For Construction

ALD-AR-1236

REV A

Scale As Shown Drawn GB Date 01/06/2017 Page 5

Please note (1) Measurements shown on this drawing are estimates only and are subject to confirmation on site prior to manufacture. (2) This artwork is prepared to demonstrate the visual intention of the project and is subject to final site measurements and scaled drawings. (3) Copyright ownership of this document remains with SignManager at all times. Use of the material contained herein, or reproduction without written permission from SignManager is strictly prohibited. Breach of this condition may result in legal proceedings being initiated against responsible parties.



DRENCHERS TO BE FULLY IN-ACCORDANCE WITH HYDRAULIC ENGINEERS DESIGN AND CONTRACTORS SHOP DRAWINGS

Cement Sheeting Staging Panel

Cement Sheeting Staging Panel

Sign 6 Sign 7

3D Shopfront Sign

Letter Height - Nom. 522mm

Overall Size - 2390mm W x 600mm H

Qty - 2 (TBC)

Details - Supplied fabricated acrylic letters illuminated by LED's. ALDI Logo & individual letters "ALDI". No visible wiring to each letter & logo. The sign will be delivered in a kit form ready for installation and electrical connection by the sign contractor. Power supplied at location by builder Cement staging panel by others.

SignManager

www.signmanager.com.au

Client
ALDI

Site Name
Glenmore Park

Site Address
Glenmore Park Shopping Centre

Description
New Signage Proposal

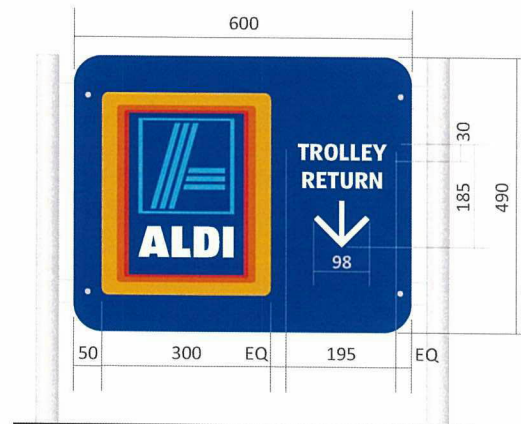
Status
Not For Construction

ALD-AR-1236

REV A

Scale As Shown **Drawn** GB **Date** 01/06/2017 **Page** 6

Please note (1) Measurements shown on this drawing are estimates only and are subject to confirmation on site prior to manufacture. (2) This artwork is prepared to demonstrate the visual intention of the project and is subject to final site measurements and scaled drawings. (3) Copyright ownership of this document remains with SignManager at all times. Use of the material contained herein, or reproduction without written permission from SignManager is strictly prohibited. Breach of this condition may result in legal proceedings being initiated against responsible parties.



Sign 8

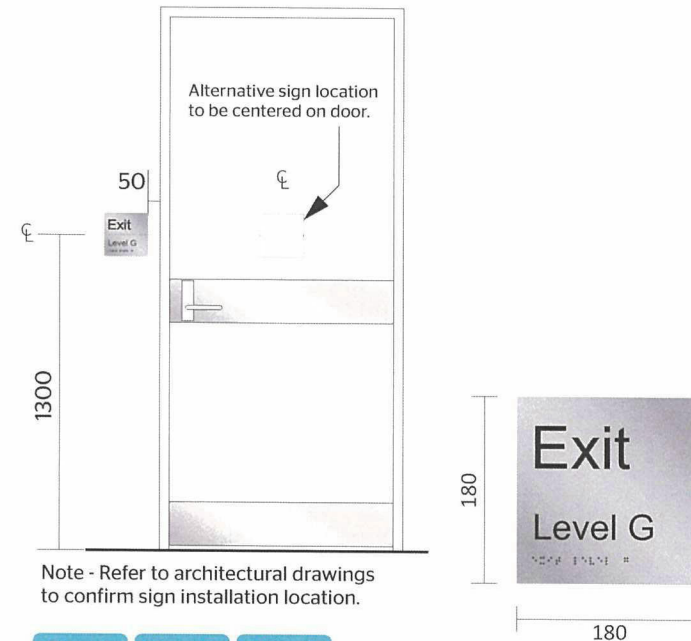
TB2 - Trolley Return

Size - 600mm W x 490mm H

Qty - 15 TBC

Details - ALDI logo (Sign manager supplied) and computer cut white SAV lettering front applied to Sapphire Blue ACM panel with clear anti-graffiti over lay. Installed onto existing trolley bays. Fixings to be painted to match sign background.

Framework to be supplied and installed by others prior to installation.



Note - Refer to architectural drawings to confirm sign installation location.

Sign 9 Sign 10 Sign 11

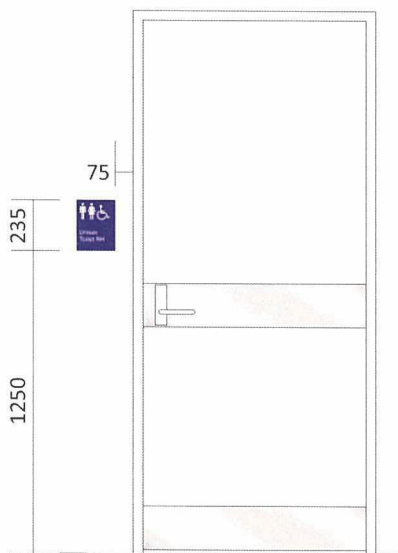
BES - Braille Exit Sign

Size - 180mm W x 180mm H TBC

Qty - 3

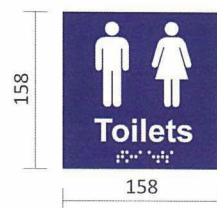
Source signs from Wood & Wood Sign Systems. Signs are specific ALDI design. Sign to be fully in accordance with BCA D3.6. Contractor to specify that they are being ordered for ALDI.

Contractor to secure install in location shown on architectural drawings with 3M VHB tape.



Location Diagram Scale 1 : 30

Sign 12



BTSU - QTY 1
Unisex Toilet Sign

BTS - Braille Toilet Signs

Size - 158mm W x 158mm H

Qty - 1 (See above)

BCA Approved Brailletactile Toilet Signs

White pictograms, and text on blue background panel.
Embossed braille text. 3mm PVC backs.

Source signs from Wood & Wood Sign Systems (available NSW, VIC & QLD). Signs are specific ALDI design. Contractor to specify that they are being ordered for ALDI.

Contractor to secure to wall with 3M VHB tape.

Note - Contractor to confirm with builder if accessibility is RH or LH.



Sign 13

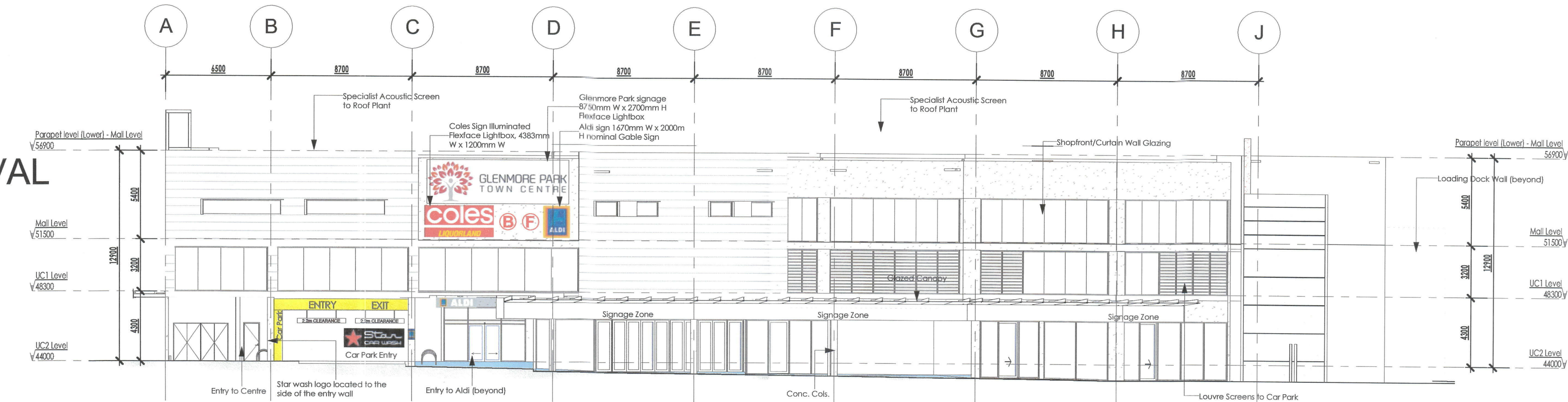
Loading Dock Sign

Size - Nom. 3600mm W x 900mm H TBC

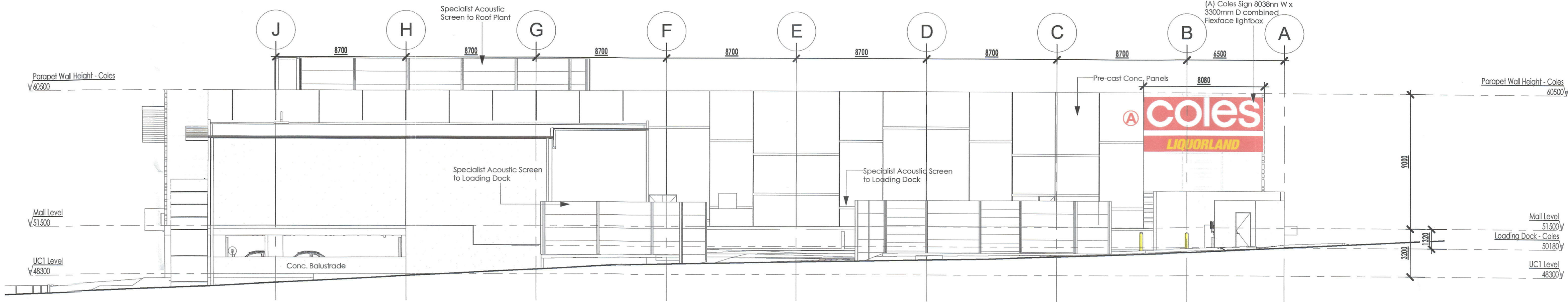
Qty - 1

Details - Computer cut SAV logo and white SAV lettering front applied to Dibond Ultramarine Blue 3mm ACM panel with 2 pack sprayed anti graffiti clear coat. Fixings to be painted to match sign background.

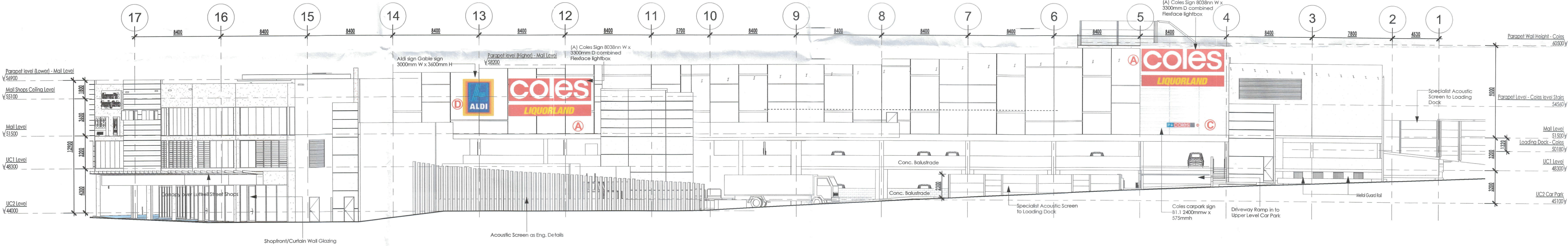
GLENMORE PARK SHOPPING CENTRE APPLICATION FOR EXTERNAL SIGNAGE APPROVAL
11th JULY 2017
COLES, ALDI, STARWASH



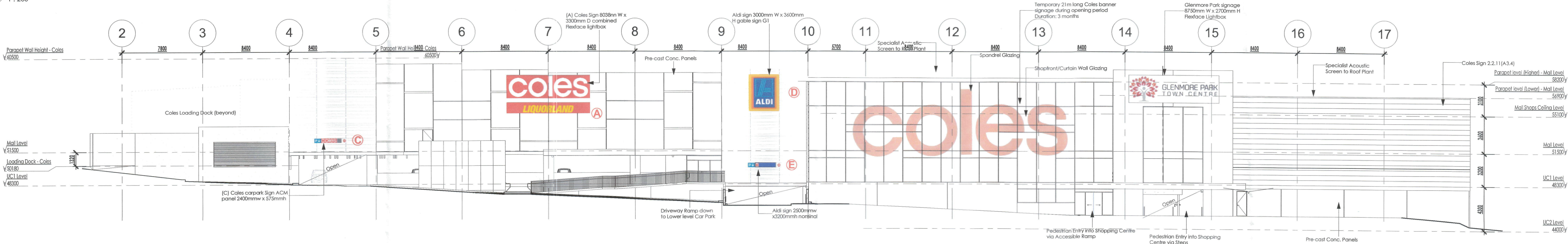
1 East (Luttrell Street) Elevation
1 : 200



2 West (Glenmore Parkway) Elevation
1 : 200



3 North (Glenmore Parkway) Elevation
1 : 200



4 South Elevation - Looking from adjacent Car Park
1 : 200

ALDI SIGNAGE	
(D)	Building signage to be backlit lightboxes @ 3000mm[w] x 3600mm[h]
(E)	Carpark Sign 2400mm W x 600mm H
(F)	Building signage to be backlit lightboxes @ 1600mm[w] x 2000mm[h]

COLES & LIQUORLAND COMBINED SIGNAGE	
(A)	Building signage to be backlit flexface lightbox Coles and Liquorland 8038 mm (w) x 3300mm [h]
(B)	Building signage to be backlit flexface lightbox Coles and Liquorland 4383mm[w] x 1200mm[h]
(C)	Freehold parking sign 2400mm[w] x 575 mm[h] Specification: ACM panel with digital print

Coles and Aldi Signage is subject to Council Approval in size, location and extent, as well as approval by Village Fair Glenmore Park PL.