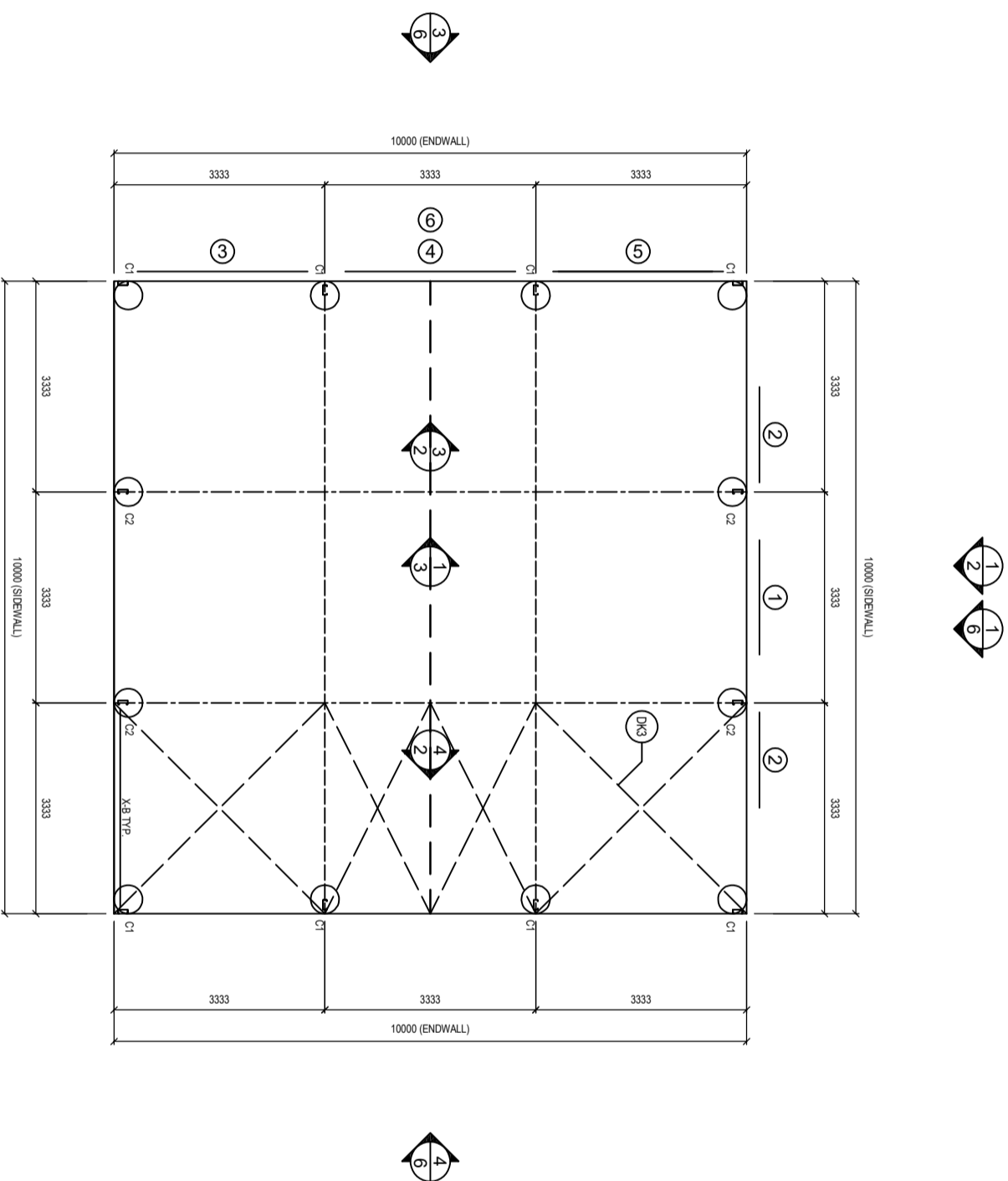


The design and detail shown on these drawings are applicable to this project only and may not be reproduced in whole or any part or be used for any other purpose without the written permission of FBHS (Aust) Pty Limited with whom copyright resides. The local distributor you are dealing with is an authorised independent distributor of Fair Dinkum Sheds' products and enters into agreements with its customers on its own behalf and not as an agent of Fair Dinkum Sheds.

IF IN DOUBT, ASK




1 FLOOR PLAN AND FOUNDATION PLAN AND MEMBER LAYOUT
SCALE: 1 = 100

DK3 - ROOF STRAP BRACING TO BE CONNECTED TO THE PURLIN CLOSEST TO THE LINE OF THE END WALL MULLION
X-B - DENOTES X-BRACING TYP.

MEMBER LEGEND

C1	C15012
C2	C15019

DESIGNED IN ACCORDANCE THE RELEVANT AUSTRALIAN STANDARDS

 K. MULHOLLAND (A. Etions)
 MEAust CPENG NER 4130937

Fernleigh
 DRAFTING | COUNCIL SERVICES

STEEL BUILDING BY
OUTWEST GARAGES & SHEDS
 (CONTACT)
 02 4735 7333
Dave Costa
 64 Nepean Avenue Penrith
 Penrith 2750

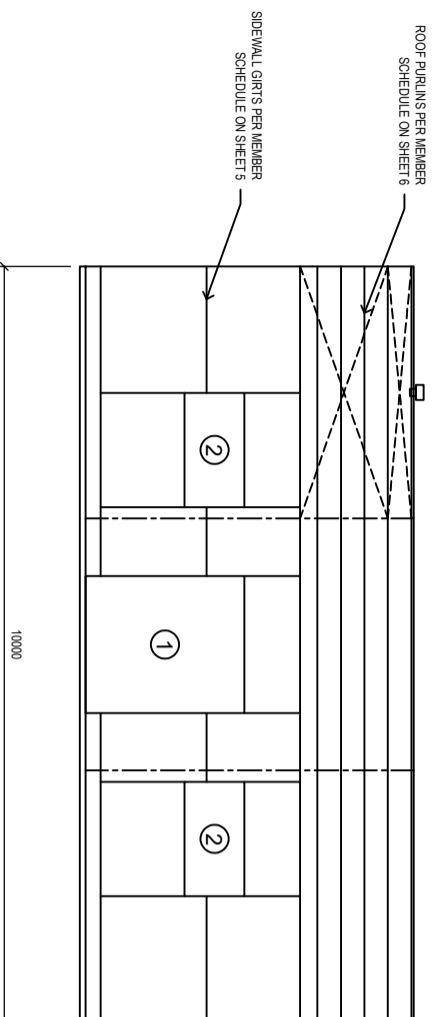
FOR AT

DRAWN FDS
 CHECKED TM
 DATE 3/03/2021
 JOB NO. NCC
 OTGS34055
 2019

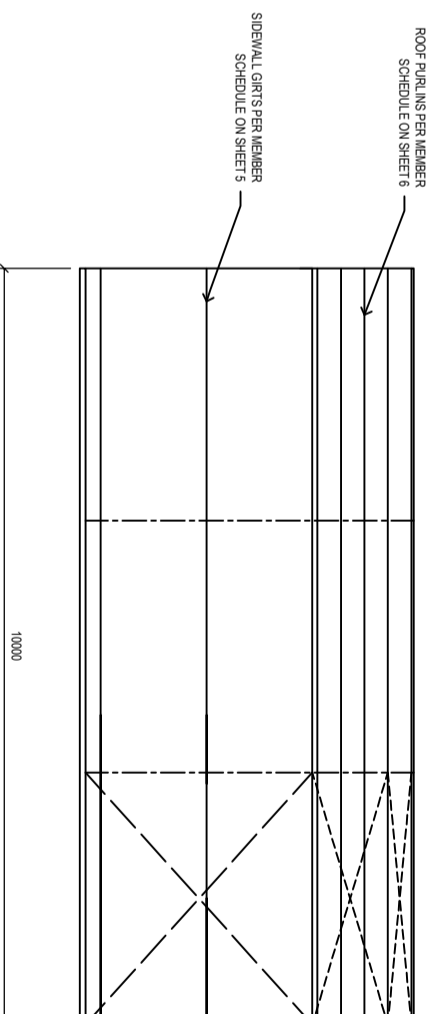
SHEET 6 OF 6



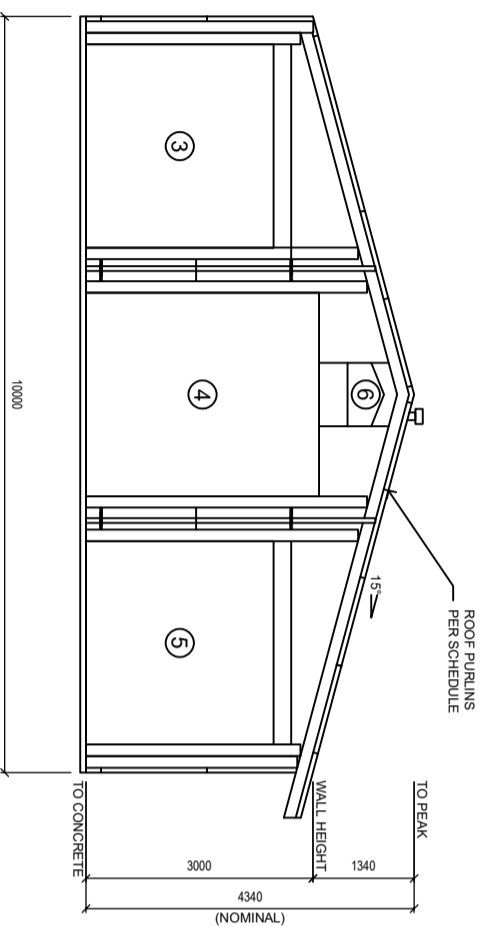
The design and detail shown on these drawings are applicable to this project only and may not be reproduced in whole or any part or be used for any other purpose without the written permission of FBHS (Aust) Pty Limited with whom copyright resides. The local distributor you are dealing with is an authorised independent distributor of Fair Dinkum Sheds' products and enters into agreements with its customers on its own behalf and not as an agent of Fair Dinkum Sheds.



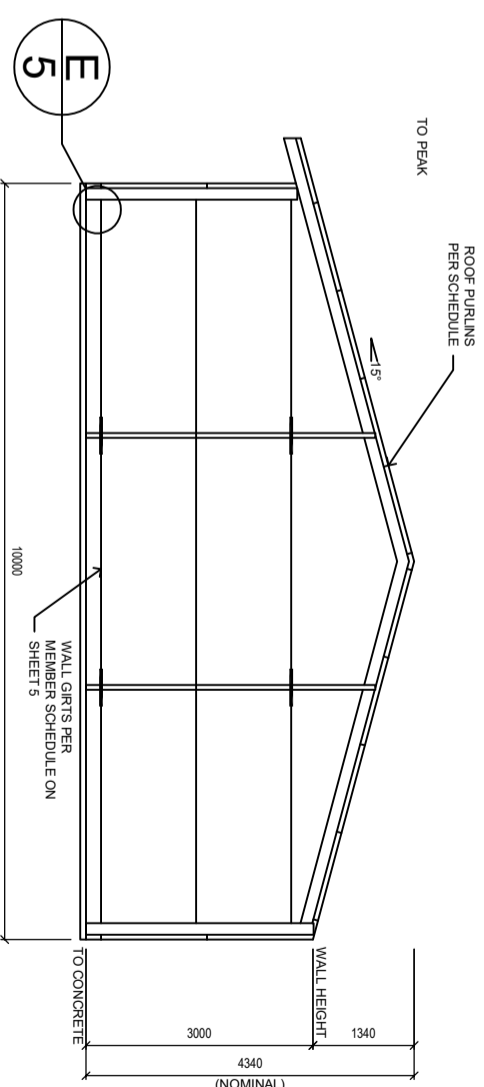
1 SIDEWALL EXTERIOR ELEVATION
SCALE: 1 = 100



2 SIDEWALL EXTERIOR ELEVATION
SCALE: 1 = 100



3 ENDWALL INTERIOR ELEVATION
SCALE: 1 = 100



4 ENDWALL INTERIOR ELEVATION
SCALE: 1 = 100

X BRACING IS REQUIRED IN 1 SIDE BAY(S), AND 1 ROOF BAY(S) (BOTH SIDES). FLY BRACING IS INCLUDED TO BE PLACED ON EVERY SECOND PURLIN AND GIRT ON ENDWALL MILLIONS, INTERNAL COLUMNS AND INTERNAL RAFTERS.

2	OF	6
SHEET		
JOB NO.	OTGS34055	NCC
DATE	3/03/2021	
CHECKED	TM	
DRAWN	FDS	

STEEL BUILDING BY
FOR
AT

(CONTACT)
OUTWEST GARAGES & SHEDS
02 4735 7333
Dave Costa
64 Nepean Avenue
Penrith 2750



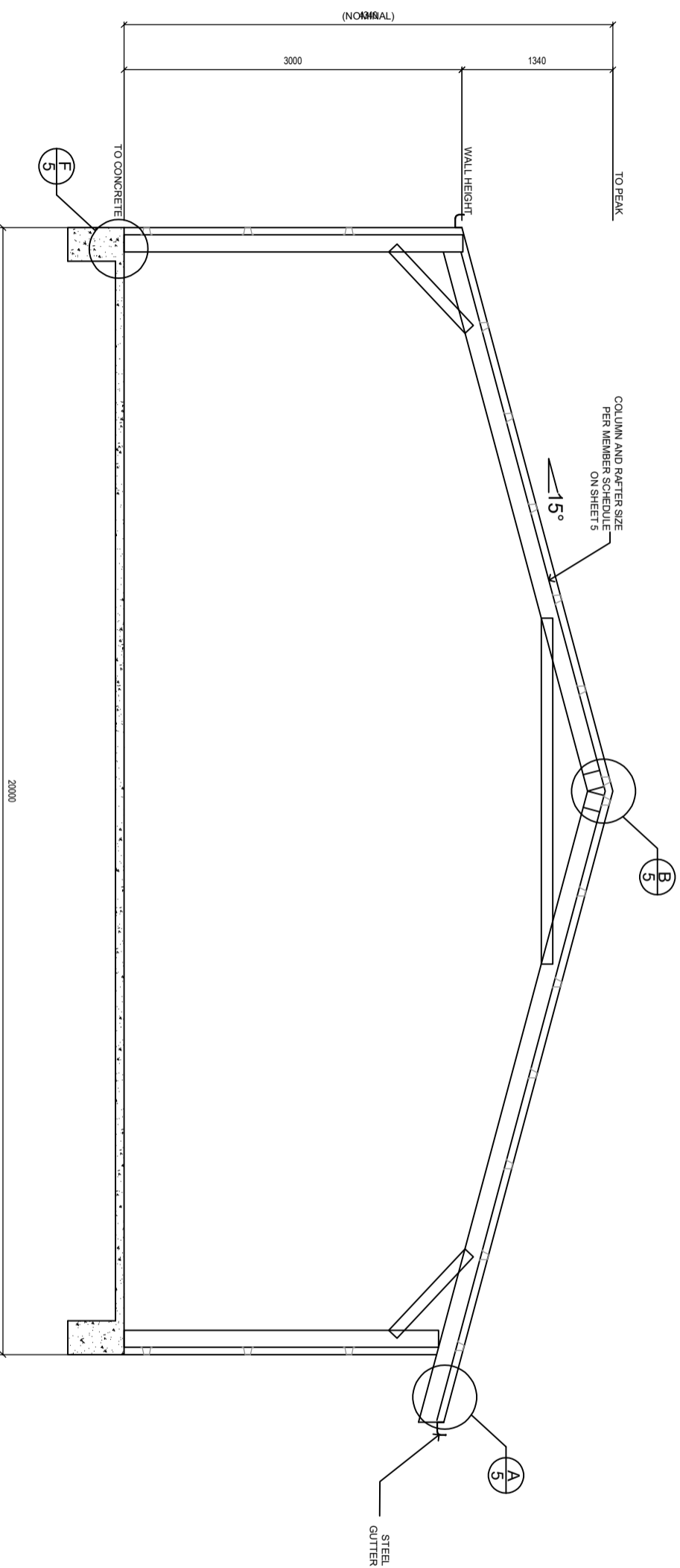
DESIGNED IN ACCORDANCE THE RELEVANT AUSTRALIAN STANDARDS

Fernleigh
DRAFTING | COUNCIL SERVICES

K. MULHOLLAND
M/aus† CP/eng NER 4130937

[Signature]
A.(Frons)

The design and detail shown on these drawings are applicable to this project only and may not be reproduced in whole or any part or be used for any other purpose without the written permission of FBHS (Aust) Pty Limited with whom copyright resides. The local distributor you are dealing with is an authorised independent distributor of Fair Dinkum Sheds' products and enters into agreements with its customers on its own behalf and not as an agent of Fair Dinkum Sheds.



1 INTERNAL FRAME SECTION
3 SCALE: 1 = 50

Refer to Sheet #4 for concrete specification.

3	OF	6
SHEET		
OTGS34055	JOB NO.	NCC
2019	DATE	3/03/2021
TM	CHECKED	
FDS	DRAWN	

STEEL BUILDING BY
OUTWEST GARAGES & SHEDS
(CONTACT)
02 4735 7333
Dave Costa
64 Nepean Avenue Penrith
Penrith 2750



Fernleigh
DRAFTING | COUNCIL SERVICES
DESIGNED IN ACCORDANCE THE RELEVANT AUSTRALIAN STANDARDS
K. MULHOLLAND (A. Ettons)
MEaus† CPeng NER 4130937

The design and detail shown on these drawings are applicable to this project only and may not be reproduced in whole or any part or be used for any other purpose without the written permission of FBHS (Aust) Pty Limited with whom copyright resides. The local distributor you are dealing with is an authorised independent distributor of Fair Dinkum Sheds products and enters into agreements with its customers on its own behalf and not as an agent of Fair Dinkum Sheds.

A	HAUNCH CONNECTION	K22BB	B	APEX CONNECTION	AP22BB	Dp	PURLIN CONNECTION DETAIL	PCONBL	Dg	GIRT CONNECTION DETAIL	GCONBL	E	END WALL GIRT CONNECTION	EGRB	F	BASE CONNECTION	BC23	M	STRAP BRACING	PTSBB					
<p>SCREW ARRANGEMENTS FOR ROOF SHEETS</p> <p>30mm Long Roof Screws 0.42 BMT 0.47 TCT 2A 0.48 TCT 0B</p>		<p>SCREW ARRANGEMENTS FOR WALL SHEETS</p> <p>OVERLAP 16mm Long Roof Screws 0.42 BMT 0.47 TCT 2A 0.48 TCT 0B</p>		<p>NOTE: 1. GIRT BRACE TEK SCREW FOR TOTAL LAP AND CONNECTION 2. SCREWS IN LAP LOCATED 25mm FROM END OF LAP</p>		<p>NOTE: 1. GIRT BRACE TEK SCREW FOR TOTAL LAP AND CONNECTION 2. SCREWS IN LAP LOCATED 25mm FROM END OF LAP</p>		<p>NOTE: 1. END WALL GIRT BRACKET 2. SCREWS IN LAP LOCATED 25mm FROM END OF LAP</p>		<p>NOTE: Refer to Member Schedule for Masonry Anchors and Frame Bolts.</p>		<p>STRAP BRACE TEK SCREW TO UNDERSIDE OF PURLIN</p>		<p>ROOF PROFILE</p> <p>0.42 CORRUGATED ROOFING 30mm Long Roof Screws 0.42 BMT 0.47 TCT 2A 0.48 TCT 0B</p>		<p>WALL SHEET PROFILE</p> <p>OVERLAP 16mm Long Roof Screws 0.42 BMT 0.47 TCT 2A 0.48 TCT 0B</p>		<p>NOTE: 1. GIRT BRACE TEK SCREW FOR TOTAL LAP AND CONNECTION 2. SCREWS IN LAP LOCATED 25mm FROM END OF LAP</p>		<p>NOTE: 1. END WALL GIRT BRACKET 2. SCREWS IN LAP LOCATED 25mm FROM END OF LAP</p>		<p>NOTE: Refer to Member Schedule for Masonry Anchors and Frame Bolts.</p>			

MEMBER AND MATERIAL SCHEDULE

1	END WALL RAFTER	Single C15012
2	C.S. FRAME RAFTER	Single C15024
3	END FRAME COLUMN (C1)	Single C15012
4	C.S. FRAME COLUMN (C2)	Single C15019
5	MULLION (C1)	Single C15012
6	C.S. FRAME KNEE BRACE	Single C10010 @ 0.9m LONG 2 bolts each end
7	KNEE BRACE HEIGHT UP COLUMN	2.35m
8	KNEE BRACE LENGTH UP RAFTER	1.57m
9	C.S. FRAME APEX BRACE	Single C10015 @ 3.07m LONG 2 bolts each end
10	APEX POSITION FROM RAFTER END	1.589m
11	ANCHOR BOLTS (# PER DETS)	Sheave Anchor 12.0x75 ZV
12	EAVE PURLIN	C15019 (Eave Purlin Bracket 0mm from top of column)
13	TYP. ROOF PURLIN SIZE	Top hat 64 x 0.75
14	MAIN BLDG. PURLIN SPACING	0.835 m (8'0" max) (Max Allow 1.000m)
15	TYP. SIDEWALL GIRT SIZE	Top hat 64 x 0.75
16	MAIN BLDG. SIDEWALL GIRT SPACING	0.889 m (3'0" max) (Max Allow 9.21m)
17	TYP. ENDWALL GIRT SIZE	Top hat 64 x 0.75 (1 row of bridging)
18	MAIN BLDG. ENDWALL GIRT SPACING	0.930 m (4'0" max) (Max Allow 1.159m)
19	ENDWALL GIRT BRIDGING	Top hat 64 x 0.75
20	FRAME SCREW FASTENERS	SDM 6.2-13x22 HEX 88 - 100
21	FRAME BOLT FASTENERS	Purlin Assy M12x20 Z/P
22	X-BRACING STRAP AND FASTENERS	Single Bracing Strap Per Roll Heavy
23	WALL COLOUR	WINDSPRAY
24	ROOF COLOUR	WINDSPRAY
25	ROLLER DOOR COLOUR	SUREFAST
26	WINDOW COLOUR	SUREFAST
27	GLASS SLIDING DOOR COLOUR	SUREFAST
28	DOWNPIPE COLOUR	BASALT
29	GUTTER COLOUR	BASALT
30	CORNER FLASHING COLOUR	BASALT
31	BARGE FLASHING COLOUR	BASALT
32	OPENING FLASHING COLOUR	BASALT
33	OPEN BAY HEADER HEIGHT	N/A

C.S. = CLEARSPAN *L* = LEFT *R* = RIGHT

PURLIN AND GIRT LENGTHS

BAY	WIDTH	PURLIN LENGTH	GIRT LENGTH
1	4m	3.666 m. (0.3m Lap)	3.583 m. (0.25m Lap)
2	5m	3.633 m. (0.3m Lap)	3.633 m. (0.3m Lap)
3	2m	3.666 m. (0.3m Lap)	3.583 m. (0.25m Lap)

DESIGNED IN ACCORDANCE THE RELEVANT AUSTRALIAN STANDARDS

Fernleigh

K. MULHOLLAND (A/Engineer)
M. LAUST CPENG NER 4130937

DRAFTING | COUNCIL SERVICES

STEEL BUILDING BY

OUTWEST GARAGES & SHEDS

(CONTACT)
02 4735 7333
Dave Costa
64 Nepean Avenue Penrith
Penrith 2750

DATE 3/03/2021
CHECKED TM
DRAWN FDS

FOR AT

JOB NO. OTGS34055
NCC 2019

DATE 3/03/2021

57 OF 69 SHEET

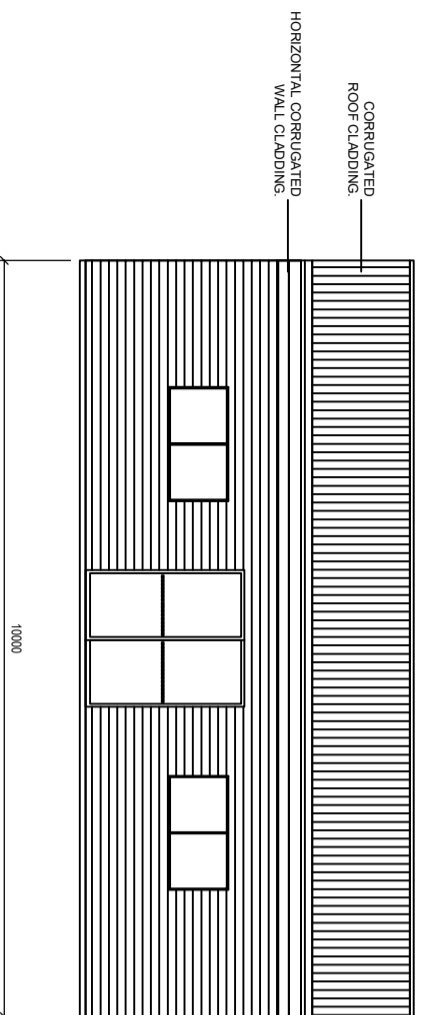
Fairdinkum SHEDS

AUSERIN

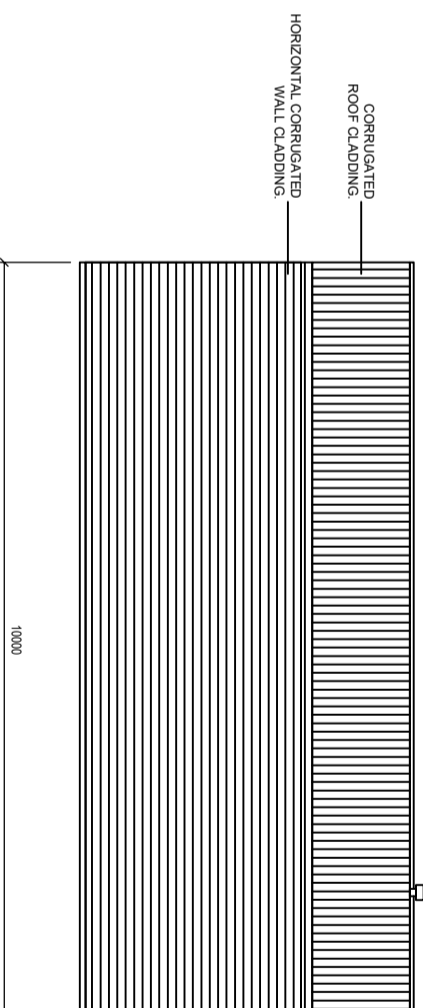
STRUCTURAL AND CIVIL CONSULTING ENGINEERS

SHED SAFE

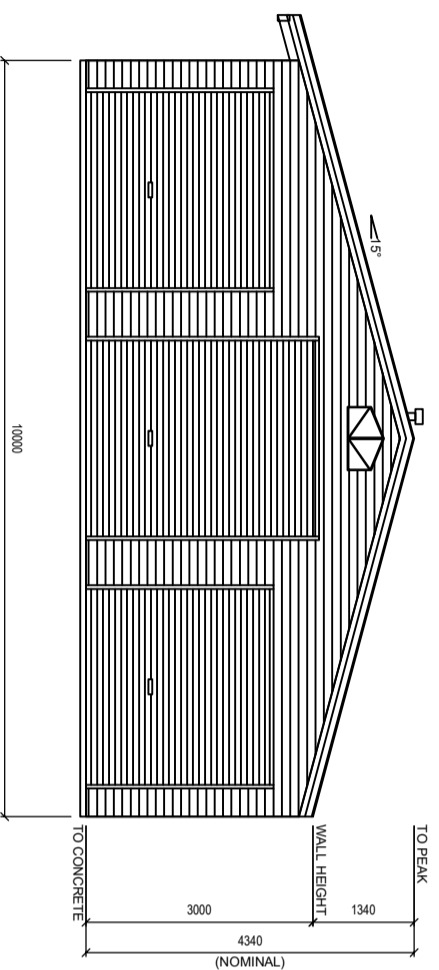
The design and detail shown on these drawings are applicable to this project only and may not be reproduced in whole or any part or be used for any other purpose without the written permission of FBHS (Aust) Pty Limited with whom copyright resides. The local distributor you are dealing with is an authorised independent distributor of Fair Dinkum Sheds' products and enters into agreements with its customers on its own behalf and not as an agent of Fair Dinkum Sheds.



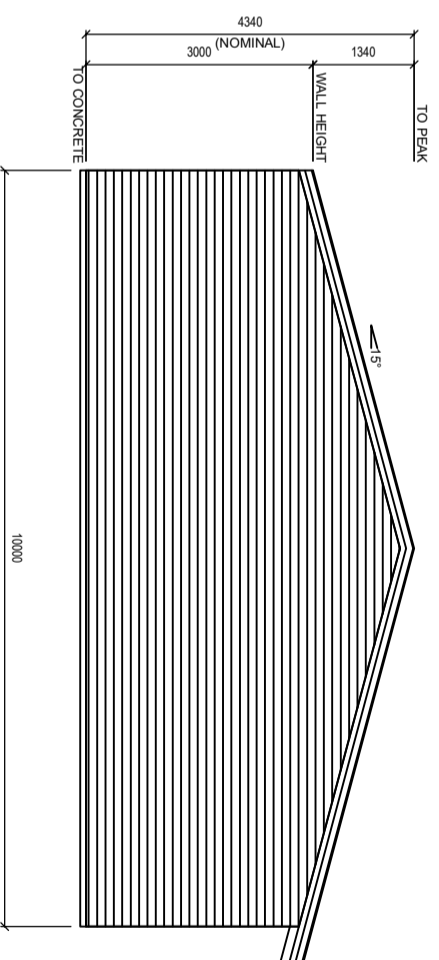
1 SIDEWALL EXTERIOR ELEVATION
SCALE: 1 = 100



2 SIDEWALL EXTERIOR ELEVATION
SCALE: 1 = 100



3 ENDWALL EXTERIOR ELEVATION
SCALE: 1 = 100



4 ENDWALL EXTERIOR ELEVATION
SCALE: 1 = 100

BUILDING COLOURS

WALL	WINDSPRAY
ROOF	WINDSPRAY
ROLLER DOOR	SURFMIST
WINDOW	SURFMIST
GLASS SLIDING DOOR	SURFMIST
ROOF VENT	WINDSPRAY
DOWNPIPE	BASALT
GUTTER	BASALT
CORNER FLASHING	BASALT
BARGE FLASHING	BASALT
OPENING FLASHING	BASALT

SHEET	6	OF	6
JOB NO.	OTGS34055	NCC	2019
DATE	3/03/2021	CHECKED	TM
DRAWN	FDS	FOR	STEEL BUILDING BY

OUTWEST GARAGES & SHEDS
(CONTACT)
02 4735 7333
Dave Costa
64 Nepean Avenue Penrith
Penrith 2750



Fernleigh
DRAFTING | COUNCIL SERVICES
DESIGNED IN ACCORDANCE THE RELEVANT AUSTRALIAN STANDARDS
K. MULHOLLAND (A. Eltons)
MLeust CPeng NER 4130937