

Appendix 8

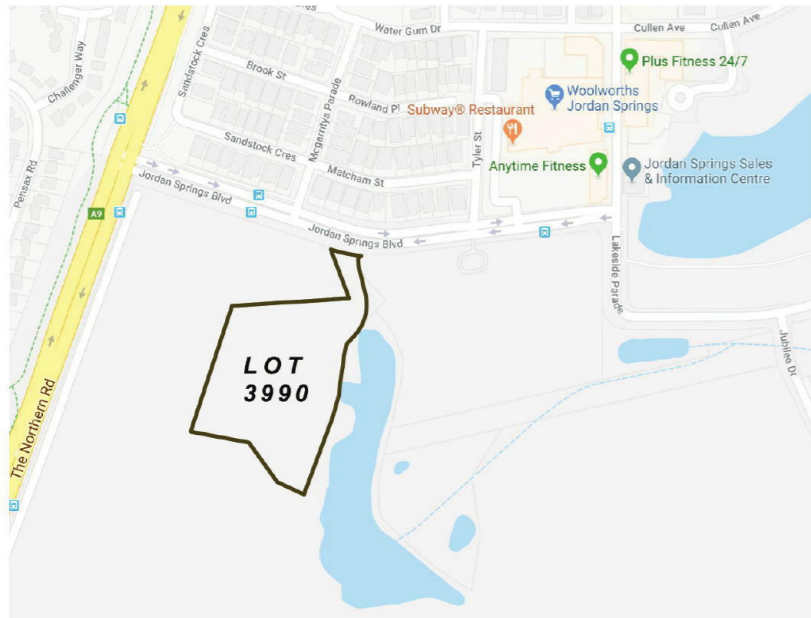
**Landscape Plan
prepared by
Sprout**

LANDSCAPE WORKS

LOT 3990, JORDAN SPRINGS

Drawing List

- L-DA 101 Drawing List, Locality Plan & Key Plan
- L-DA 102 Landscape Plan - Sheet 1
- L-DA 103 Landscape Plan - Sheet 2
- L-DA 104 Landscape Sections
- L-DA 105 Landscape Details, Plant List & Species Selection



LOCALITY PLAN
SITE ADDRESS: JORDAN SPRINGS BLVD, JORDAN SPRINGS

L-DA 102

KEY PLAN

L-DA 103



DRAWING NOT TO BE USED FOR TENDERING OR CONSTRUCTION PURPOSES



NOTES

1. Do not scale from drawings. Verify all dimensions and levels on site.
2. All levels shown are in metres Australian Height Datum and dimensions in millimetres unless otherwise specified.
3. This drawing should be read in conjunction with the project specification and details. Should a conflict exist advice and direction should be sought from the superintendent.
4. The copyright subsisting in these drawings lies with Sprout. They must not be used, copied or reproduced without the prior written consent of Sprout.

revision	date	description
A	21/3/18	FOR REVIEW & COMMENT
B	29/3/18	FOR DA APPROVAL
C	4/4/18	FOR DA APPROVAL
D	5/4/18	FOR DA APPROVAL
E	24/4/18	FOR DA APPROVAL






project
Jordan Springs - Residential Lot 3990
 drawing
Landscape Cover Sheet

FOR DEVELOPMENT APPLICATION ONLY

project no. 1806
 scale 1:500@A1 / 1:1000@A3
 drawn MH
 checked MP
 rev
L-DA 101 E

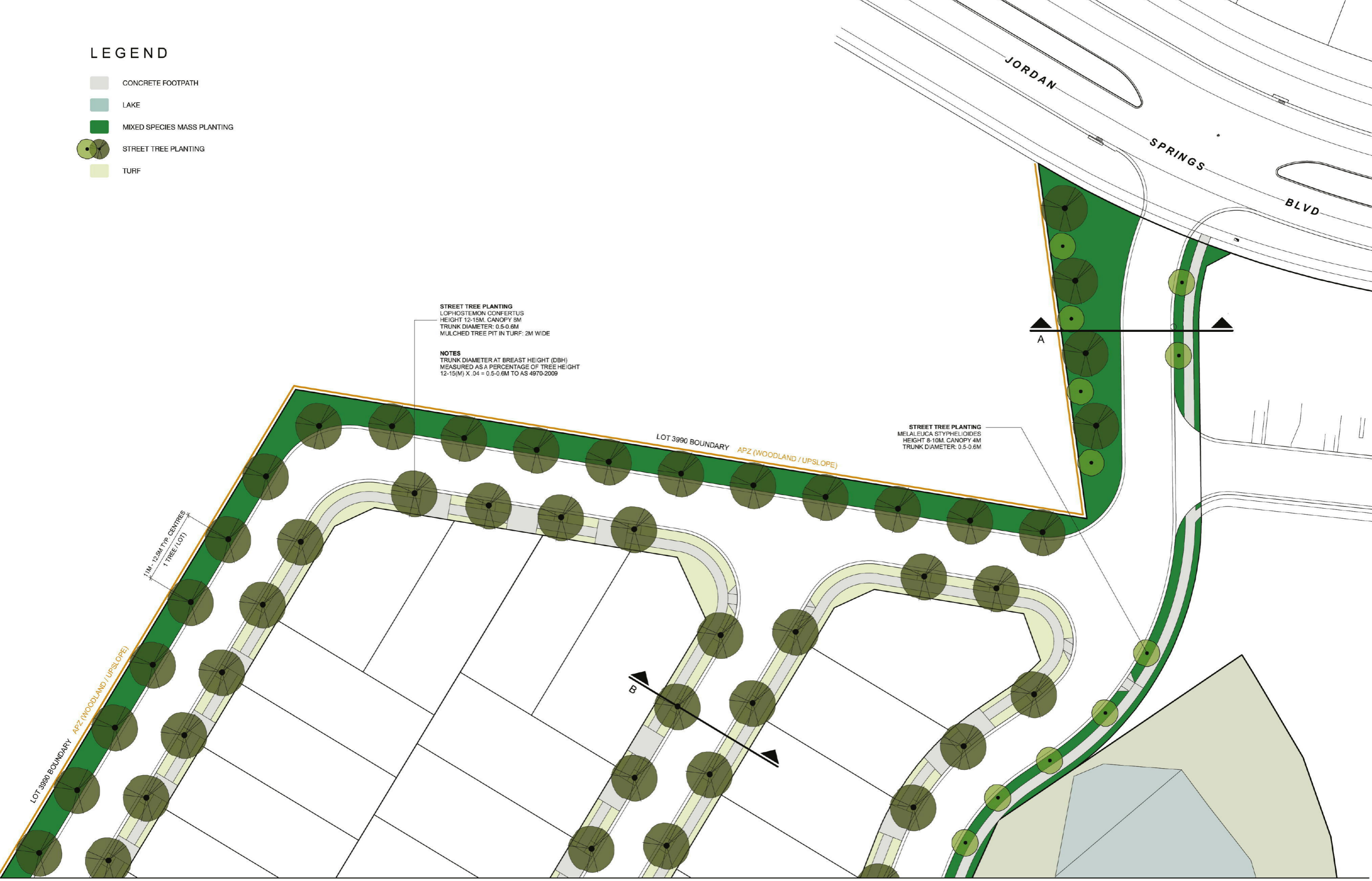
LEGEND

-  CONCRETE FOOTPATH
-  LAKE
-  MIXED SPECIES MASS PLANTING
-  STREET TREE PLANTING
-  TURF

STREET TREE PLANTING
 LOPHOSTEMON CONFERTUS
 HEIGHT 12-15M, CANOPY 8M
 TRUNK DIAMETER: 0.5-0.6M
 MULCHED TREE PIT IN TURF: 2M WIDE

NOTES
 TRUNK DIAMETER AT BREAST HEIGHT (DBH)
 MEASURED AS A PERCENTAGE OF TREE HEIGHT
 12-15(M) X .04 = 0.5-0.6M TO AS 4970-2009

STREET TREE PLANTING
 MELALEUCA STYPHELOIDES
 HEIGHT 8-10M, CANOPY 4M
 TRUNK DIAMETER: 0.5-0.6M



0 5 10 15 20 25 30 M

SPROUT DRAWING NOT TO BE USED FOR TENDERING OR CONSTRUCTION PURPOSES

Landscape Architecture Pty Ltd
 Document Set ID: 8279612
 Version: 1, Version Date: 06/07/2018



- NOTES**
- Do not scale from drawings. Verify all dimensions and levels on site.
 - All levels shown are in metres Australian Height Datum and dimensions in millimetres unless otherwise specified.
 - This drawing should be read in conjunction with the project specification and details. Should a conflict exist advice and direction should be sought from the superintendent.
 - The copyright subsisting in these drawings lies with Sprout. They must not be used, copied or reproduced without the prior written consent of Sprout.

revision	date	description
A	21/3/18	FOR REVIEW & COMMENT
B	29/3/18	FOR DA APPROVAL
C	4/4/18	FOR DA APPROVAL
D	5/4/18	FOR DA APPROVAL
E	24/4/18	FOR DA APPROVAL



project
 Jordan Springs - Residential Lot 3990
 drawing
 Landscape Plan - Sheet 1

FOR DEVELOPMENT APPLICATION ONLY

project no. 1806
 scale 1:250@A1 / 1:500@A3
 drawn MH
 checked MP
 L-DA 102 E



LOT 3990 BOUNDARY APZ (WOODLAND / DOWNSLOPE)

LOT 3990 BOUNDARY

LAKE






STREET TREE PLANTING
 LOPHOSTEMON CONFERTUS
 HEIGHT 12-15M, CANOPY 8M
 TRUNK DIAMETER: 0.5-0.6M
 MULCHED TREE PIT IN TURF: 2M WIDE

NOTES
 TRUNK DIAMETER AT BREAST HEIGHT (DBH)
 MEASURED AS A PERCENTAGE OF TREE HEIGHT
 12-15(M) X .04 = 0.5-0.6M TO AS 4970-2009

STREET TREE PLANTING
 MELALEUCA STYPHELOIDES
 HEIGHT 8-10M, CANOPY 4M
 TRUNK DIAMETER: 0.5-0.6M

11 - 12.5M TYP. CENTRES
 1 TREE / LOT

LEGEND

-  CONCRETE FOOTPATH
-  LAKE
-  MIXED SPECIES MASS PLANTING
-  STREET TREE PLANTING
-  TURF

0 5 10 15 20 25 30 M

SPROUT Landscape Architecture Pty Ltd
 DRAWING NOT TO BE USED FOR TENDERING OR CONSTRUCTION PURPOSES



NOTES
 1. Do not scale from drawings. Verify all dimensions and levels on site.
 2. All levels shown are in metres Australian Height Datum and dimensions in millimetres unless otherwise specified.
 3. This drawing should be read in conjunction with the project specification and details. Should a conflict exist advice and direction should be sought from the superintendent.
 4. The copyright subsisting in these drawings lies with Sprout. They must not be used, copied or reproduced without the prior written consent of Sprout.

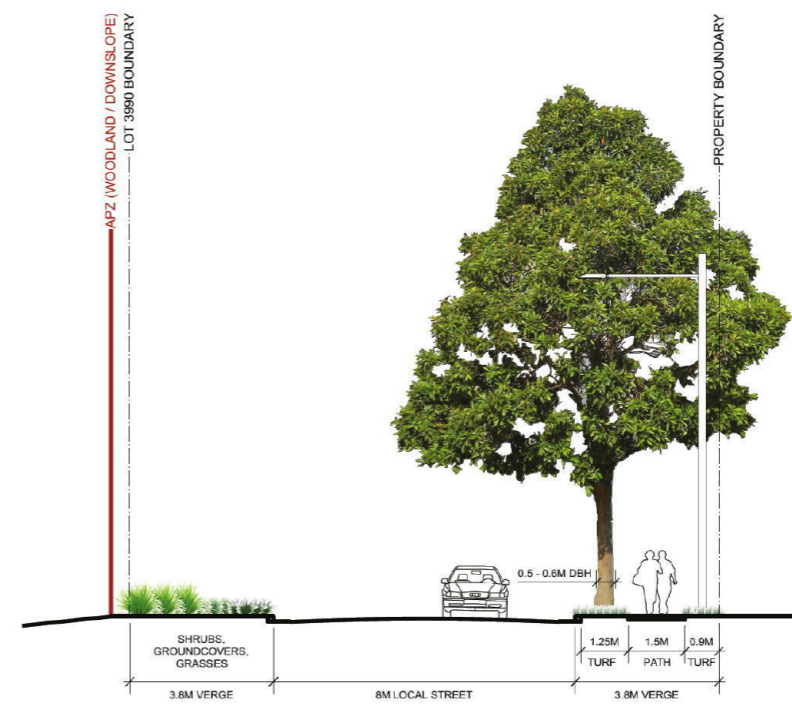
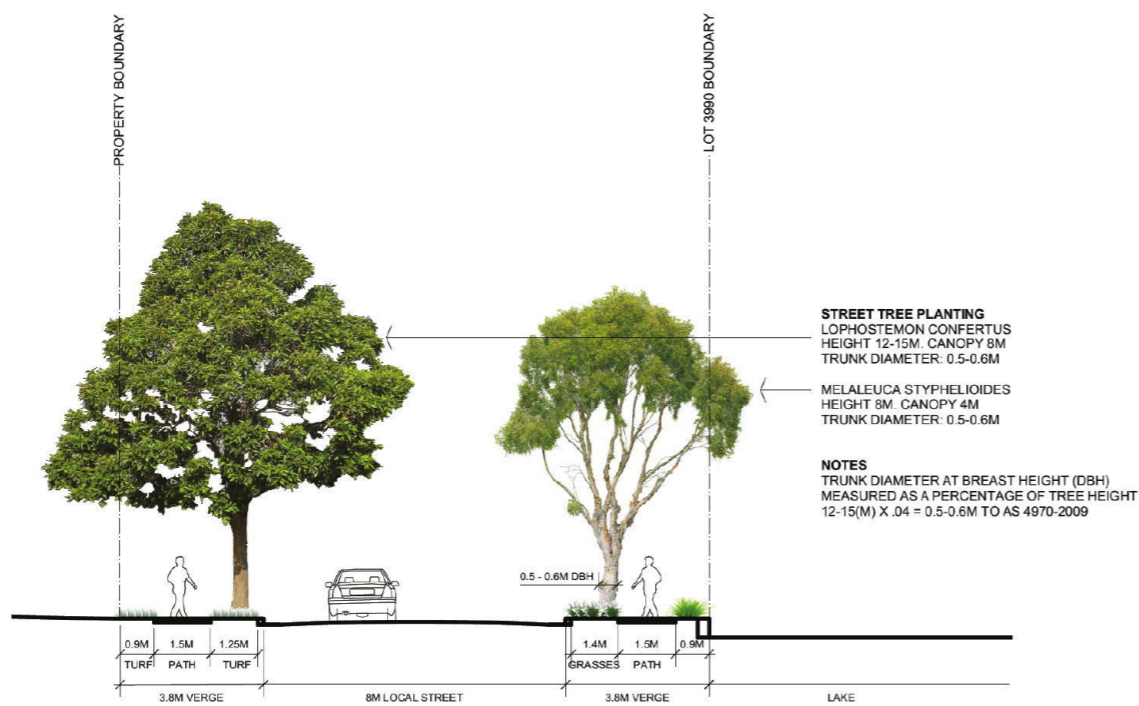
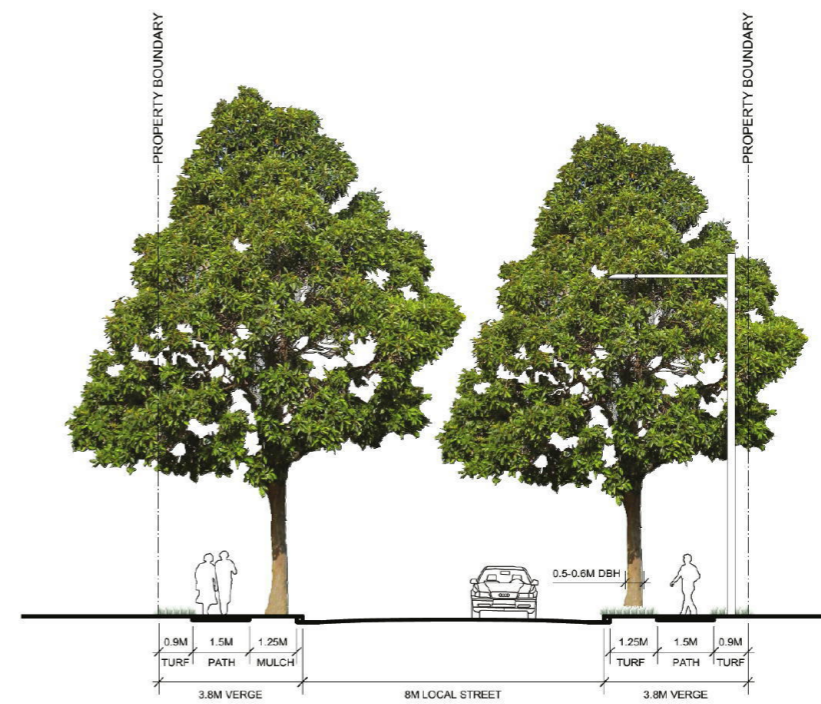
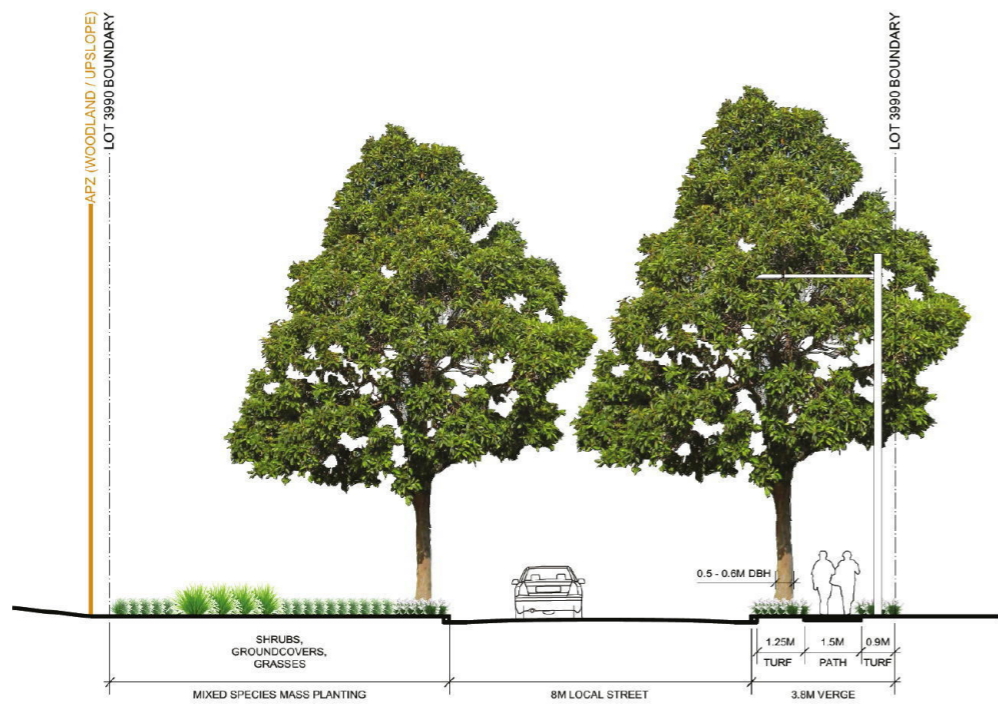
revision	date	description
A	21/3/18	FOR REVIEW & COMMENT
B	29/3/18	FOR DA APPROVAL
C	4/4/18	FOR DA APPROVAL
D	5/4/18	FOR DA APPROVAL
E	24/4/18	FOR DA APPROVAL

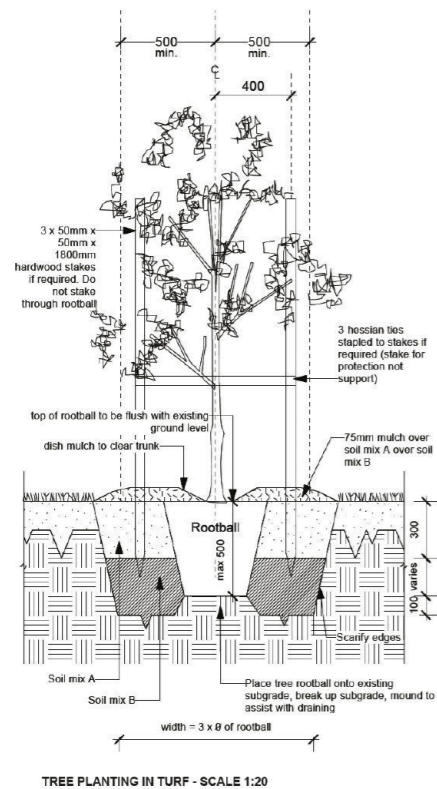


project
 Jordan Springs - Residential Lot 3990
 drawing
 Landscape Plan - Sheet 2

FOR DEVELOPMENT APPLICATION ONLY

project no. 1806
 scale 1:250@A1 / 1:500@A3
 drawn MH
 checked MP
 L-DA 103 E





4.4 NEW TREE PLANTING IN TURF

- Design Intent:**
- To provide pedestrian amenity and visual quality along streets.
 - To maximise conditions for tree growth.
- Performance Criteria:**
- Hand excavate around existing trees.
 - Provide adequate tree pit width and depth.

Jan 2014 TM - 49

Plant list

ID	Common Name	Botanical Name	Scheduled Size	Mature Height	Mature Spread
Trees					
Bb	Brush Box	Lophostemon confertus	75L	12 - 15m	8m
Mst	Spiky Leafed Paperbark	Melaleuca styphelioides	75L	8.0-10m	4m
Groundcovers					
Cc	Creeping Christian	Commelina cyanea	Viro-tube	0.3m	1.2m
Dc	Dianella 'Breeze'	Dianella caerulea 'Breeze'	Viro-tube	0.5 - 0.6m	0.5 - 0.6m
Hv	Native Sarsaparilla	Hardenbergia violacea	Viro-tube	0.3m	3m
Grasses					
Lv	Lomandra 'Verday'	Lomandra longifolia 'Verday'	Viro-tube	0.5 - 0.6m	0.5 - 0.6m

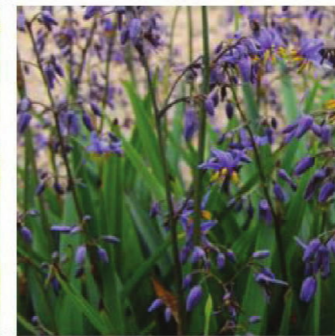
Plant species selection



Brush Box
Lophostemon confertus



Creeping Christian
Commelina cyanea



Dianella 'Breeze'
Dianella caerulea 'Breeze'



Lomandra 'Verday'
Lomandra longifolia 'Verday'



Native Sarsaparilla
Hardenbergia violacea



Prickly Leafed Paperbark
Melaleuca styphelioides

01 TREE PLANTING IN TURF
1:20@A1 / 1:40@A1

DRAFT PENRITH STREET TREE PALETTE –

Botanical Name	Common Name	Mat. Height	Spread	Nominal spacing
<i>Acer buergeranum</i>	Trident maple	6m	6m	8m
<i>Acer freemannii</i> ' Autumn Blaze'	Autumn Blaze	13m	10m	12m
<i>Acer negundo</i> 'Sensation'	Sensation Maple	8m	8m	10m
<i>Acmena smithii</i>	Lilly pilly	9m	5m	9m
<i>Backhousia citriodora</i>	Lemon scented myrtle	5m	4m	7m
<i>Backhousia myrtifolia</i>	Grey Myrtle	7m	4m	7m
<i>Brachychiton populneus</i>	Kurrajong	12m	5m	7m
<i>Corymbia eximia</i>	Yellow bloodwood	12m		
<i>Cupaniopsis anacardioides</i>	Tuckeroo	8m	6m	9m
<i>Eucalyptus</i> sp	Local species			
<i>Fraxinus griffithii</i>	Evergreen Ash	6m	4m	8m
<i>Fraxinus pennsylvanica</i> 'Cimmzam' Cimmaron	Ash	13m	8m	12m
<i>Fraxinus pennsylvanica</i> 'Urbdell' Urbanite	Ash	11m	8m	12m
<i>Fraxinus pennsylvanica</i> 'Wasky' Skyward	Ash	10m	6m	10m
<i>Harpullia pendula</i>	Tulipwood	9m	8m	15m
<i>Jacaranda mimosifolia</i>	Jacaranda	12m	8m	15m
<i>Koelreuteria paniculata</i>	Golden Rain Tree	7m	7m	10m
<i>Lagerstroemia hybrids</i> 'Indian Summer' range	Brush Box	12m	8m	11m
<i>Lophostemon confertus</i>	Brush Box	12m	8m	11m
<i>Malus ionensis</i> 'Plena'	Crab-apple	5m	4m	6m
<i>Melaleuca linariifolia</i>	Snow in Summer	7m	5m	7m
<i>Melaleuca styphelioides</i>	Prickly leafed paperbark	10m	4m	8m
<i>Pistacia chinensis</i>	Chinese pistacio	8m	5m	8m
<i>Pittosporum rhombifolium</i>	Queensland or Diamond Pittosporum	11m	7m	9m
<i>Pyrus calleryana</i> 'Glens Form' Chanticleer	Pear	11m	5m	
<i>Pyrus calleryana</i> 'Aristocrat'	Pear	11m	7m	9m
<i>Pyrus calleryana</i> 'Bradford'	Pear	11m	8m	
<i>Pyrus calleryana</i> 'Capital'	Pear	11m	3m	
<i>Quercus palustris</i> 'Pringreen' green Pillar	Pin Oak	14m	3m	
<i>Syzygium leuhmannii</i>	Riberry Small leafed lilly pilly	6m	4m	
<i>Ulmus parvifolia</i> (cult)	Chinese elm	9m	9m	
<i>Zelkova serrata</i> 'Green Vase'	Japanese Zelkova	11m	9m	