

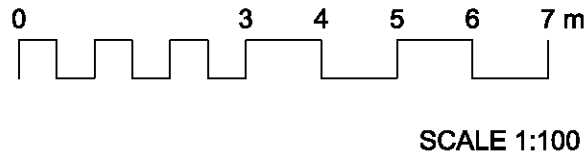


EXISTING TREE LIST AS PER ARBORIST REPORT

No	Scientific Name	Health	Height (m)	Spread (m)	DBH (cm)	ITFZ (m)	MTFZ (m)	T/ME (m)	Retention Value	Comments	Retain / remove
1.	Liquidambar formosana	Good	18	9	E50	6.0	2.5	4.2	Moderate	Species prone to branch shed	Retain and protect
2.	Cedrus deodara	Good	18	12	50	6.0	2.5	4.2	High	Of significant visual impact	Retain and protect
3.	Cedrus atlantica glauca	Tree has been removed									
4.	Tridax albifera	Good	15	12	40	4.8	2.0	3.4	Nil		Remove.
5.	Cryptomeria japonica 'Elegans'	Fair	12	5	15/18/45	6.1	2.6	4.3	Nil	DBH calculated as 51cm	Remove.
6.	Cedrus deodara	Good	20	16	95	11.4	4.8	8.0	Low		Remove.
7.	Capreolus arizonica	Fair	12	12	E60	7.2	3.0	5.0	Moderate	This species is highly tolerant of root loss	Retain and protect
8.	Capreolus macrocarpa 'gligna'	Fair	14	14	75	9.0	3.8	6.3	Low	Reverted/ some damage	Remove.
9.	Pyrus assuriensis	Good	10	8	E30	3.6	1.5	2.5	Low		Remove.
10.	Nyssa sylvatica	Good	16	12	80	9.6	4.0	6.7	Low		Remove.
11.	Cedrus deodara	Good	18	12	90	10.8	4.5	7.6	Low		Remove.
12.	Fraxinus griffithii	Good	7	8	E35	4.2	1.8	2.9	Nil		Remove.
13.	Juniperus sp.	Good	6	6	20	2.0	0.8	1.3	Nil		Remove.
14.	Capreolus sempervirens 'Swane's golden'	Good	10	3	20	2.4	1.0	1.7	Low	Able to be retained of minor visual impact	Retain and protect
15.	Capreolus sempervirens 'Swane's golden'	Good	10	3	20	2.4	1.0	1.7	Low	Able to be retained of minor visual impact	Retain and protect
N1	Liquidambar styraciflua	Good	14	12	50	6.0	2.5	4.2	Essential		Retain and protect
N2	Thuja plicata	Good	12	12	50	6.0	2.5	4.2	Essential		Retain and protect
N3	Thuja plicata	Good	12	12	60	7.2	3	5	Essential		Retain and protect

LEGEND

- LAWN
- GARDEN BEDS
- PAVING
- PATH
- ROAD
- TREES TO BE REMOVED
- EXISTING TREES
- TREE PROTECTION ZONE
- MINIMUM TREE PROTECTION ZONE
- PROPOSED TREES



ISSUE

DATE

REVISION

NOTE

DO NOT SCALE FROM DRAWING. USE FIGURED DIMENSIONS ONLY.
CHECK ALL DIMENSIONS ON SITE BEFORE ANY MANUFACTURE OR CONSTRUCTION

FILE NAME

NBL_Leonay_200602.vwx

PROJECT

NBL_Leonay_2020

ADDRESS

8 Linksvie Ave, Leonay, NSW

CLIENT

Glenstone Group

DRAWING

Overall Landscape Layout

N

Nicholas Bray
Landscapes

PROJECT #

NBL_Leonay_2020

DATE

2/6/20

SCALE @ A1

1:100

DRAWN

JJ

CHKD

NB

PROJECT #

NBL_Leonay_2020

DATE

2/6/20

SCALE @ A1

1:100

DRAWN

JJ

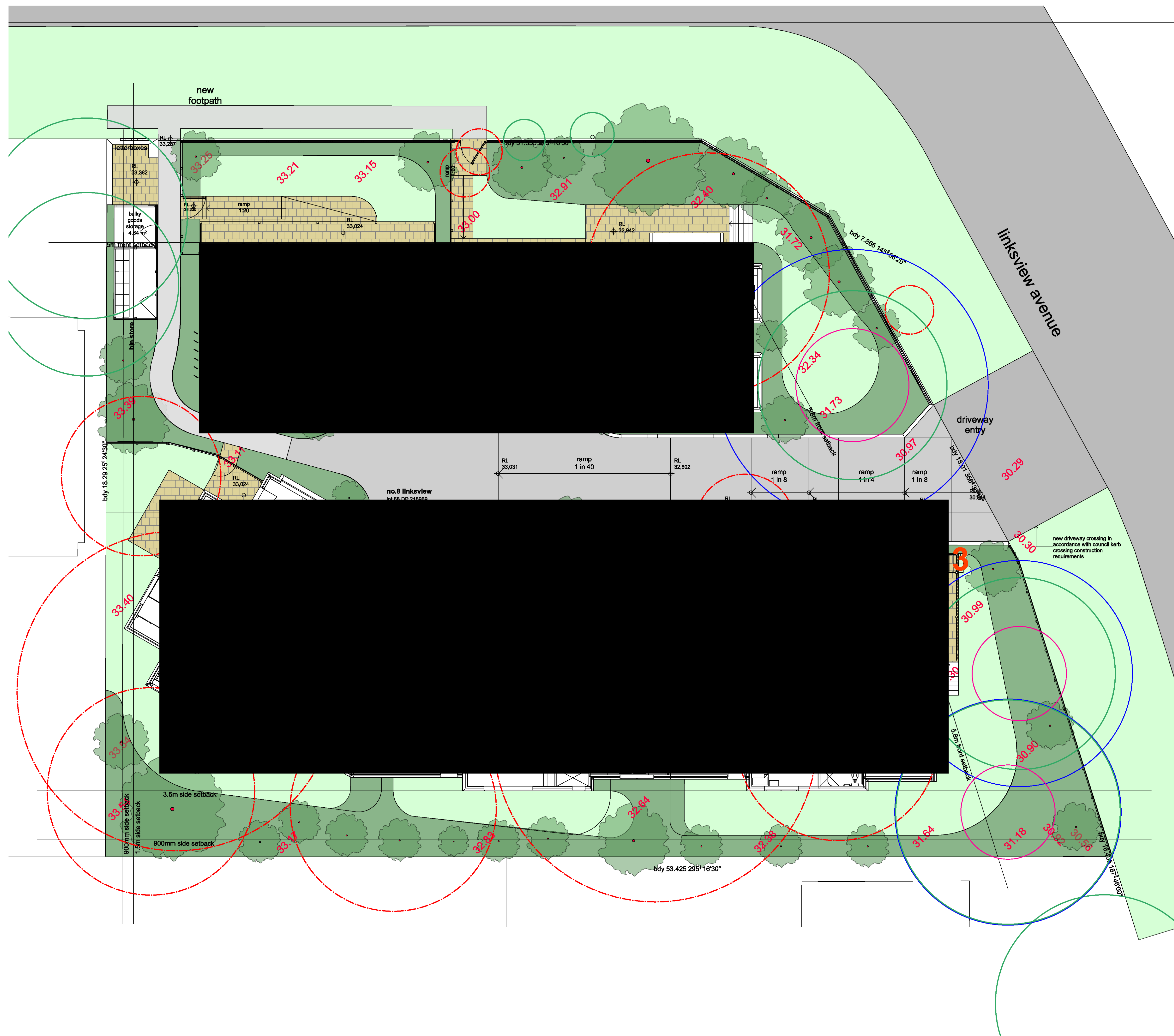
CHKD

NB

Nicholas Bray Landscapes

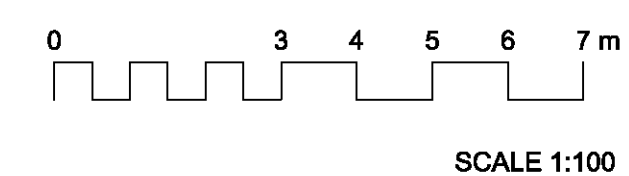
471 Argyle Street Moss Vale
PO Box 323 Moss Vale NSW 2577 Australia
M: 0417 278 267 W: www.nicholasbray.net.au E: contact@nicholasbray.net.au

ABN: 25001055205



LEGEND

	LAWN
	GARDEN BEDS
	PAVING
	PATH
	VEHICLE AND PEDESTRIAN ROADWAY
	TREES TO BE REMOVED
	EXISTING TREES
	TREE PROTECTION ZONE
	MINIMUM TREE PROTECTION ZONE
	PROPOSED TREES
	EXISTING LEVELS



ISSUE	DATE	REVISION
-------	------	----------

NOTE DO NOT SCALE FROM DRAWING. USE FIGURED DIMENSIONS ONLY.
CHECK ALL DIMENSIONS ON SITE BEFORE ANY MANUFACTURE OR CONSTRUCTION

FILE NAME
NBL_Leonay_200602.vwx

PROJECT
NBL Leonay 2020

8 Linksview Ave, Leonay, NSW

CLIENT
Glenstone Group

DRAWING

Landscape Layout

PROJECT #
NBL_Leonay_2020

DATE 2/6/20 DWG # REV

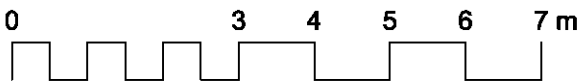
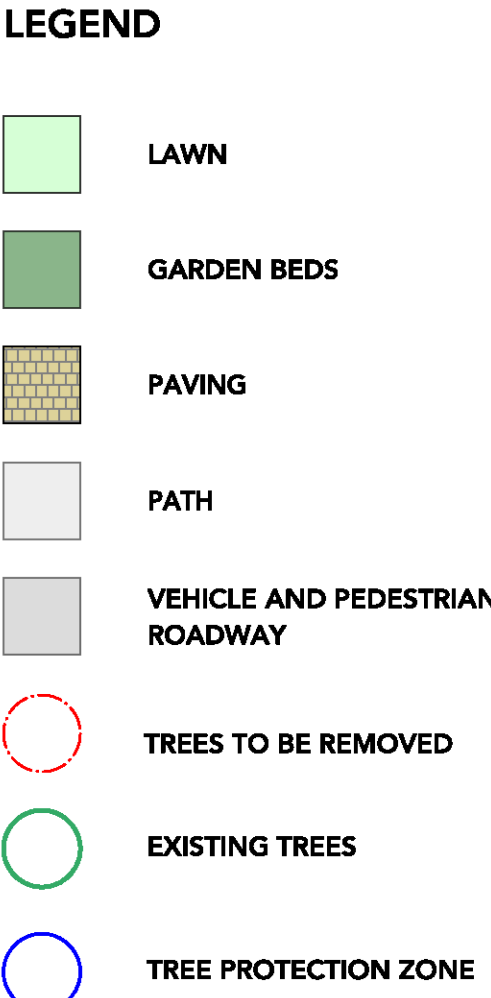
SCALE @ A1 1:100 L2

DRAWN JJ CHKD NB

Nicholas Bray Landscapes 471 Argyle Street Moss Vale
PO Box 323 Moss Vale NSW 2577 Australia ABN: 25001055205
M: 0417 278 267 W: www.nicholasbray.net.au E: contact@nicholasbray.net.au



Nicholas Bray Landscapes 471 Argyle Street Moss Vale
PO Box 323 Moss Vale NSW 2577 Australia ABN: 25001055205
M: 0417 278 267 W: www.nicholasbray.net.au E: contact@nicholasbray.net.au



Nicholas Bray Landscapes 471 Argyle Street Moss Vale
PO Box 323 Moss Vale NSW 2577 Australia ABN: 25001055205
M: 0413 378 263 W: www.nicholasbray.net.au E: contact@nicholasbray.net.au

ID	Botanical Name	Common Name	Scheduled Size	Quantity
Cdb	Correa 'Dusky Bells'	Correa 'Dusky Bells'	2.5 litre	41
CSa	Callistemon salignus	Willow Bottlebrush	25 litre	2
CWA	Callistemon citrinus 'White Anzac'	Callistemon citrinus 'White Anzac'	140mm	15
DiaC	Dianella caerulea	Blue Flax-lily	2.5 Litres	210
Feum	Elaeocarpus eumundi	Smoothed leaved Quandong	75 litre	5
ETT	Euonymus 'Tom Thumb'	Euonymus 'Tom Thumb'	5 litre	39
GR	Grevillea rosmarinifolia	Rosemary Grevillea	5 litre	32
HSc	Hibbertia scandens	Golden Guinea Flower, Snake Vine	2.5 litre	40
HV	Hardenbergia violacea 'Mini-Ha-Ha'	Mini-Ha-Ha Hardenbergia	5 litre	130
LlNa	Lagerstroemia indica 'Natchez'	Crepe Myrtle	45 litre	5
Lomt	Lomandra 'Tilga'	Tilga Mat Rush	2.5 litre	152
MPar	Myoporum parvifolium	Carpet Spreading Myoporum	2.5 litre	30
MurrJuss	Murraia paniculata	Orange Jessamine	25 litre	66
SAS-1	Syzygium Aussie Southern	Lilly Pilly	25 litre	25
STSi	Stenocarpus sinuatus	Firewheel Tree	75 litre	3
TAI	Tibouchina leipodota	Tibouchina Alstonville	3 litre	6

SCALE 1:100