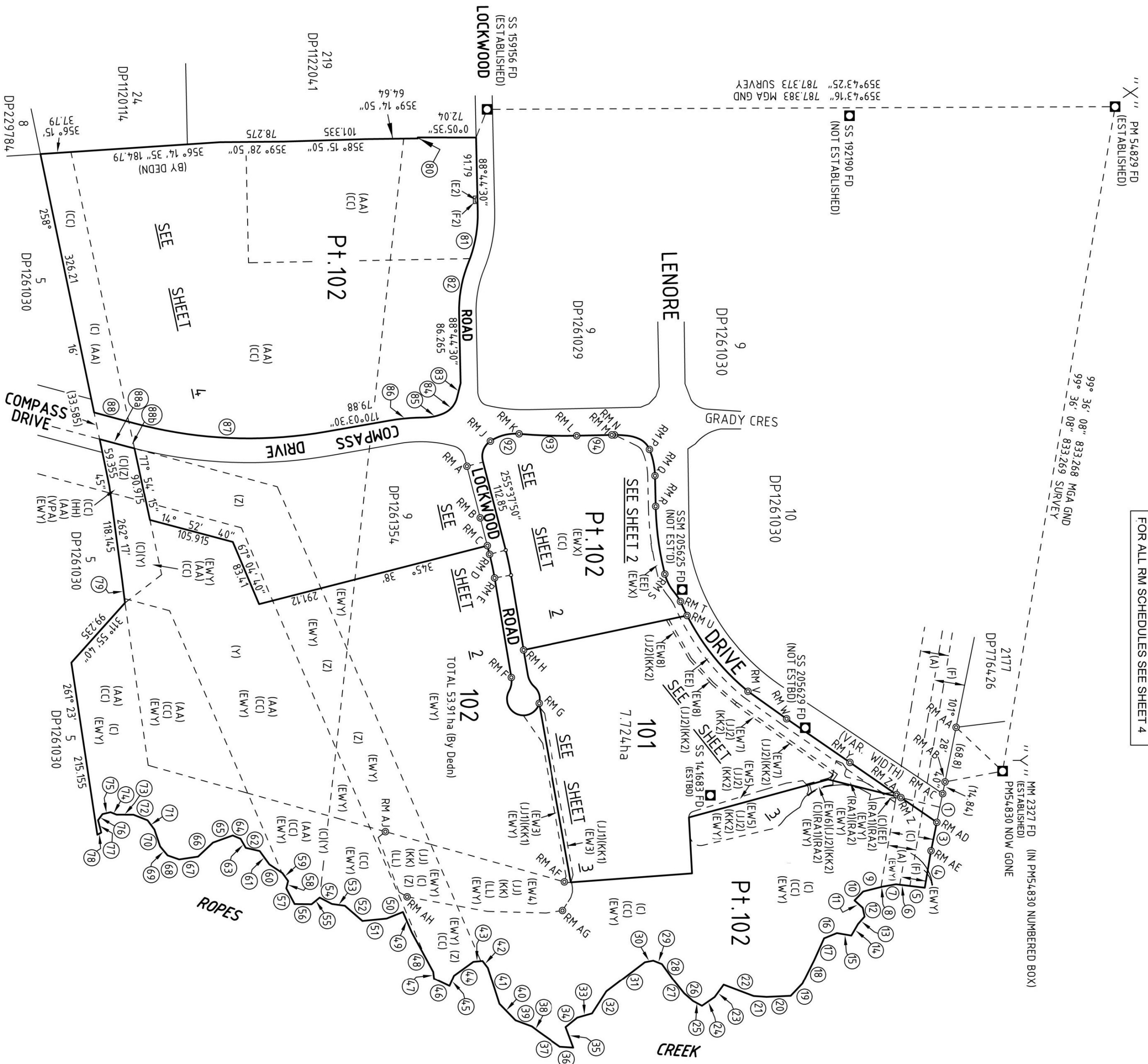


ARC SCHEDULE			
No.	BEARING	DISTANCE	ARC RAO
1	100° 23' 30"	63.82	64.26
2	100° 24' 20"	63.815	64.26
3	130° 08' 30"	25.755	26.68
4	168° 08'	24.595	24.765
5	174° 57' 30"	4.319	25.25
6	182° 31' 15"	236.3	238.175
7	14° 35' 25"	7.91	577.5
8	345° 42' 40"	36.59	37.29
9	1° 51'	71.795	661.905

LINES TABLE		
No.	BEARING	DISTANCE
1	101° 28'	36.15
2	101° 28'	35.875
3	99° 36' 40"	4.637
4	262° 55' 20"	27.94
5	262° 55' 20"	27.94
6	264° 38' 25"	1.22
7	103° 52'	18.85
8	194° 59'	51.855
9	14° 59'	36.765
10	358° 44' 20"	43.265

ROPES CREEK BOUNDARY LINES		
No.	BEARING	DISTANCE
1	187° 00' 30"	18.49
2	186° 54'	17.345
3	169° 46'	17.725
4	163° 48'	1.105
5	165° 58' 20"	22.69
6	134° 02'	15.395
7	4° 45'	13.63
8	78° 04' 40"	11.095
9	131° 31' 20"	12.235
10	120° 10' 40"	16.535
11	189° 47' 40"	18.02
12	157° 43' 40"	17.135
13	114° 12' 20"	29.255
14	116° 32'	32.855
15	133° 24' 20"	21.24
16	177° 28' 10"	29.845
17	183° 51' 10"	16.025
18	200° 49' 50"	39.585
19	125° 53' 10"	18.98
20	145° 39' 10"	19.06
21	208° 32' 40"	12.5
22	220° 58'	14.405
23	231° 17' 10"	20.775
24	234° 12'	24.935
25	202° 17' 40"	11.515
26	169° 15'	10.6
27	142° 36' 50"	59.96
28	122° 48' 30"	32.475
29	141° 04' 20"	18.63
30	69° 27' 30"	27.12
31	184° 02' 30"	16.775
32	215° 15' 20"	32.605
33	217° 02' 15"	10.33
34	200° 29' 15"	21.515
35	252° 11' 05"	4.6915
36	225° 50'	28.56
37	232° 46' 50"	10.89
38	174° 32' 45"	11.295
39	144° 15' 20"	29.555
40	113° 04' 45"	13.86
41	205° 23' 45"	21.2
42	263° 21' 50"	8.555
43	241° 31' 30"	55.58
44	246° 36' 20"	27.5
45	157° 58' 25"	21.71
46	174° 29' 35"	30.065
47	220° 51' 40"	28.68
48	188° 04' 25"	16.16
49	207° 35' 15"	17.02
50	140° 30'	12.95
51	180° 40' 35"	21.025
52	242° 08' 45"	21.995
53	284° 25' 30"	9.27
54	234° 14' 20"	12.16
55	213° 37' 05"	19.375
56	234° 07' 20"	20.295
57	192° 51' 35"	17.66
58	240° 19' 45"	12.94
59	202° 38'	10.53
60	160° 14' 10"	25.905
61	136° 45' 50"	25.335
62	171° 27' 25"	23.595
63	199° 18' 50"	15.145
64	230° 19' 10"	14.48
65	251° 25' 20"	21.91
66	233° 27' 25"	14.255
67	201° 45' 40"	18.725
68	180° 02' 20"	20.94
69	201° 52' 05"	8.03
70	167° 13' 10"	10.19
71	126° 08' 15"	9.355
72	75° 21' 45"	15.815
73	150° 41' 45"	5.51

- NEW EASEMENTS**
- (EW3) EASEMENT TO DRAIN WATER 8.8 WIDE & VARIABLE WIDTH
  - (EW4) EASEMENT TO DRAIN WATER VARIABLE WIDTH (NO.2)
  - (EW5) EASEMENT TO DRAIN WATER VARIABLE WIDTH (NO.3)
  - (EW6) EASEMENT TO DRAIN WATER VARIABLE WIDTH (NO.4)
  - (EW7) EASEMENT TO DRAIN WATER 3.5 WIDE
  - (EW8) EASEMENT TO DRAIN WATER 3 WIDE
  - (UJ1) RESTRICTION ON THE USE OF LAND (NO.7)
  - (KK1) POSITIVE COVENANT (NO.8)
  - (UJ2) RESTRICTION ON THE USE OF LAND (NO.9)
  - (KK2) POSITIVE COVENANT (NO.10)
  - (RA1) RIGHT OF ACCESS VARIABLE WIDTH (NO.11)
  - (RA2) RIGHT OF ACCESS VARIABLE WIDTH (NO.13)
  - (EWX) POSITIVE COVENANT (NO.12)
  - (EWY) RIGHT OF ACCESS VARIABLE WIDTH (NO.11)(NO.13)
- EXISTING EASEMENTS**
- (A) EASEMENT FOR OVERHEAD POWERLINES 35 WIDE (AB35355)
  - (AA) LAND EXCLUDES MINERALS. SEE CROWN GRANT.
  - (C) RESTRICTION ON THE USE OF LAND (DP11294.7)
  - (CC) RESERVATIONS AND CONDITIONS IN THE CROWN GRANTS.
  - (E2) EASEMENT FOR PADMOUNT SUBSTATION 5.5 WIDE (A964433)
  - (EE) EASEMENT FOR UNDERGROUND CABLES 9 WIDE & VARIABLE WIDTH (A0889589)
  - (F) EASEMENT FOR TRANSMISSION LINE (U399609)
  - (F2) RESTRICTION ON THE USE OF LAND (A1964431)(SITE)
  - (UJ) RESTRICTION ON THE USE OF LAND (DP1261354)(NO.5)
  - (KK) POSITIVE COVENANT (DP1261354)(NO.6)
  - (LL) EASEMENT TO DRAIN WATER VARIABLE WIDTH (DP1261354)
  - (Y) EASEMENT FOR TRANSMISSION LINE 12192 WIDE (GOV. GAZ 16-10-64 - J924492)
  - (Z) EASEMENT FOR TRANSMISSION LINE 60.96 WIDE & VARIABLE WIDTH (DP1153614)
- NOTATIONS**
- (EWX) THE PT. LOT 102 BENEFITED BY EASEMENTS (EW3) (EW6) (EW7) (EW8)
  - (EWY) THE PT. LOT 102 BENEFITED BY EASEMENTS (EW3) (EW4)



FOR ALL SS / PM COORDINATES & CONNECTIONS SEE SHEET 5  
 FOR ALL RM SCHEDULES SEE SHEET 4

**SURVEYOR: PETER ROBERT HOWIE**

Date of Survey: 24TH APRIL 2021

Surveyor's Ref: 10862.DP.002.D

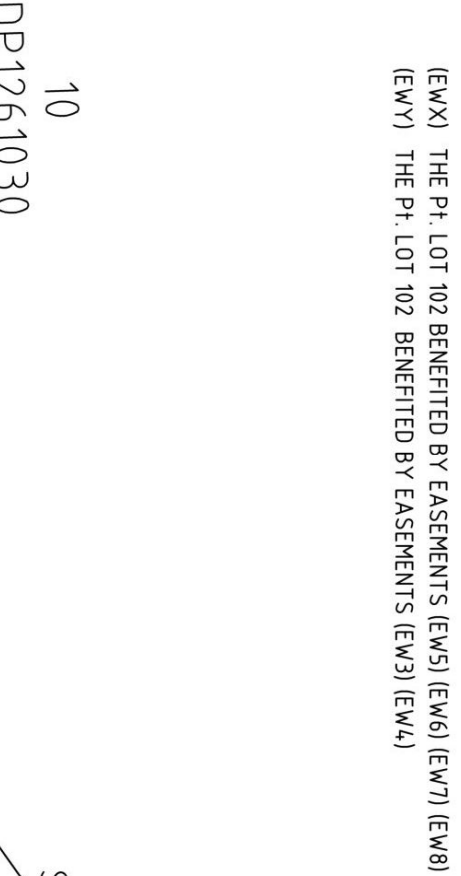
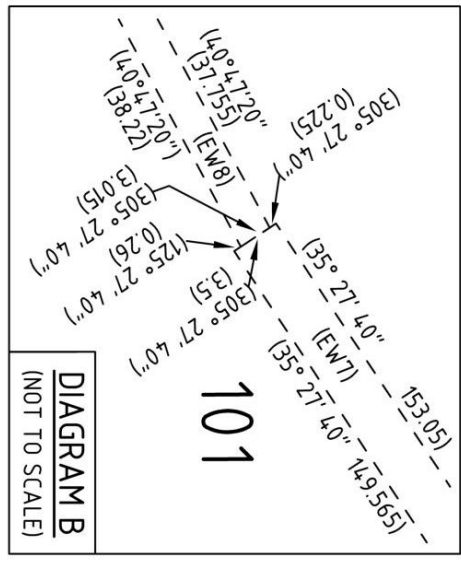
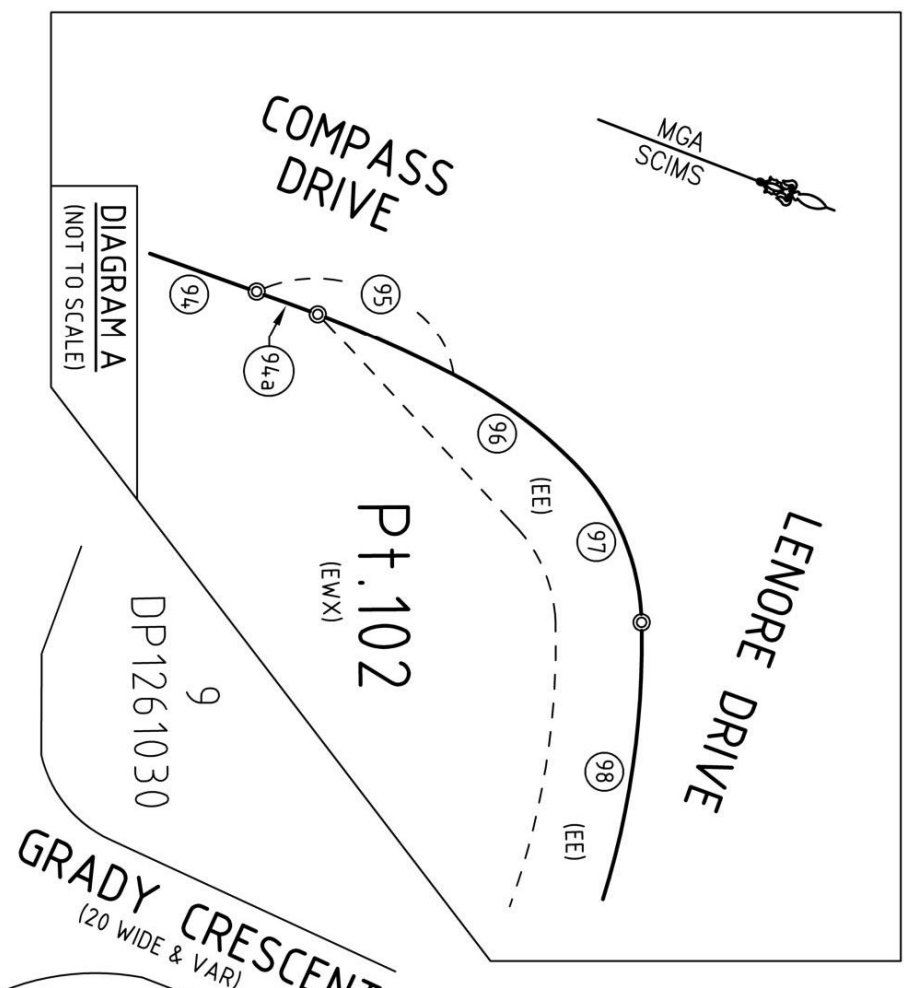
**PLAN OF SUBDIVISION OF LOT 1 IN DP1261030**

L.G.A.: PENRITH  
 Locality: ERSKINE PARK  
 Reduction Ratio: 1:4000  
 Lengths are in metres.

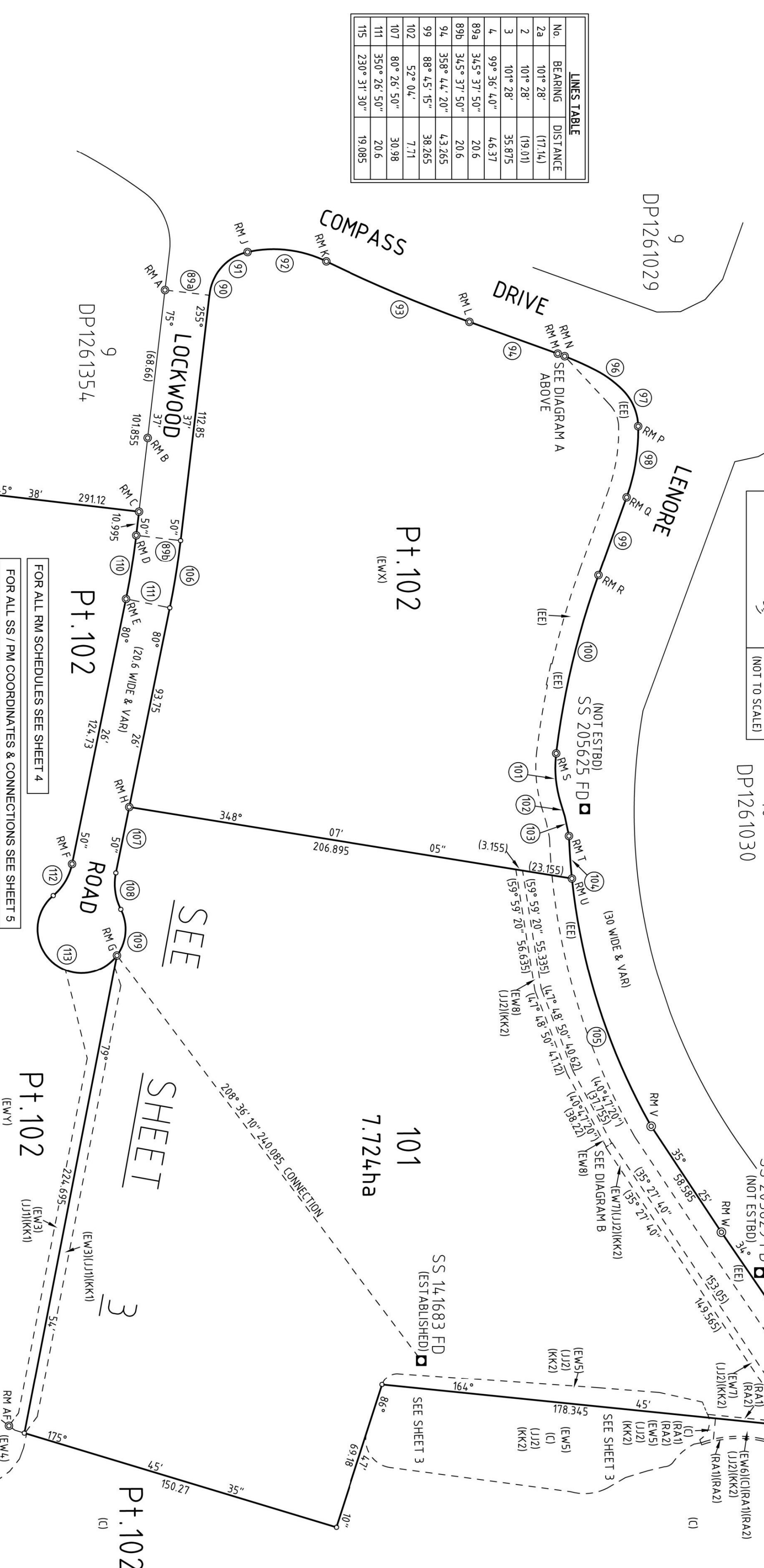
Registered  
 19/05/2021

**DP1268632**

- NEW EASEMENTS**
- (EW3) EASEMENT TO DRAIN WATER 8.8 WIDE & VARIABLE WIDTH
  - (EW4) EASEMENT TO DRAIN WATER VARIABLE WIDTH (NO.2)
  - (EW5) EASEMENT TO DRAIN WATER VARIABLE WIDTH (NO.3)
  - (EW6) EASEMENT TO DRAIN WATER VARIABLE WIDTH (NO.4)
  - (EW7) EASEMENT TO DRAIN WATER 3.5 WIDE
  - (EW8) EASEMENT TO DRAIN WATER 3 WIDE
  - (EW9) EASEMENT TO DRAIN WATER VARIABLE WIDTH (NO.1)
  - (EW10) EASEMENT TO DRAIN WATER VARIABLE WIDTH (NO.2)
  - (EW11) EASEMENT TO DRAIN WATER VARIABLE WIDTH (NO.3)
  - (EW12) EASEMENT TO DRAIN WATER VARIABLE WIDTH (NO.4)
  - (EW13) EASEMENT TO DRAIN WATER VARIABLE WIDTH (NO.5)
  - (EW14) EASEMENT TO DRAIN WATER VARIABLE WIDTH (NO.6)
  - (EW15) EASEMENT TO DRAIN WATER VARIABLE WIDTH (NO.7)
  - (EW16) EASEMENT TO DRAIN WATER VARIABLE WIDTH (NO.8)
  - (EW17) EASEMENT TO DRAIN WATER VARIABLE WIDTH (NO.9)
  - (EW18) EASEMENT TO DRAIN WATER VARIABLE WIDTH (NO.10)
  - (EW19) EASEMENT TO DRAIN WATER VARIABLE WIDTH (NO.11)
  - (EW20) EASEMENT TO DRAIN WATER VARIABLE WIDTH (NO.12)
  - (EW21) EASEMENT TO DRAIN WATER VARIABLE WIDTH (NO.13)
- EXISTING EASEMENTS**
- (A) EASEMENT FOR OVERHEAD POWERLINES 35 WIDE (AB35355)
  - (AA) LAND EXCLUDES MINERALS. SEE CROWN GRANT.
  - (C) RESTRICTION ON THE USE OF LAND (DP11294.7)
  - (E2) EASEMENT FOR PADMOUNT SUBSTATION 5.5 WIDE (AB64433)
  - (EE) EASEMENT FOR UNDERGROUND CABLES 9 WIDE & VARIABLE WIDTH (A0889589)
  - (F) EASEMENT FOR TRANSMISSION LINE (U3996409)
  - (J) RESTRICTION ON THE USE OF LAND (DP1261354)
  - (JJ) RESTRICTION ON THE USE OF LAND (DP1261354)
  - (KK) POSITIVE COVENANT (DP1261354) (No.6)
  - (LL) EASEMENT TO DRAIN WATER VARIABLE WIDTH (DP1261354)
  - (LY) EASEMENT FOR TRANSMISSION LINE 121.92 WIDE (GGV GAZ 16-10-64 - 19244.92)
  - (Z) EASEMENT FOR TRANSMISSION LINE 60.96 WIDE & VARIABLE WIDTH (DP1153814)



LINES TABLE		
No.	BEARING	DISTANCE
1	101° 28'	(17.14)
2	101° 28'	(19.01)
3	101° 28'	35.875
4	99° 36' 40"	4.637
89a	34.5° 37' 50"	20.6
89b	34.5° 37' 50"	20.6
94	358° 44' 20"	43.265
99	88° 45' 15"	38.265
102	52° 04'	7.71
107	80° 26' 50"	30.98
111	350° 26' 50"	20.6
115	230° 31' 30"	19.085



SCHEDULE OF ARCS				
No.	BEARING	DISTANCE	ARC	RAD
90	260° 13' 20"	5.875	5.88	5.0
91	296° 27' 40"	22.5	23.56	22.5
92	34.5° 42' 40"	36.59	37.29	55.5
93	1° 51'	71.795	71.83	661.905
94a	(359° 24' 50")	(3.415)	(3.415)	14.55
95	2° 29'	18.99	19	14.55
96	15° 09' 50"	15.545	15.605	5.0
97	4.5° 51' 30"	18.16	18.6	24.5
98	78° 10' 50"	33.21	33.4	90.5
100	82° 17' 15"	84.54	84.72	375.34
101	63° 56' 40"	22.435	22.595	54.5
103	57° 12'	8.26	8.27	4.55
104	64° 59'	19.505	19.91	293.68
105	51° 14' 35"	120.125	120.98	293.68
106	78° 02' 20"	31.595	31.605	375.93
108	61° 12' 30"	16.97	17.295	25.75
109	73° 43' 20"	21.365	22.5	20.3
110	78° 02' 20"	29.865	29.87	355.33
112	99° 41' 10"	16.97	17.29	25.75
113	22° 12' 05"	4.032	68.54	20.3
114	221° 27' 30"	66.935	67.1	275.5
116	241° 34' 05"	82.105	82.43	267.285

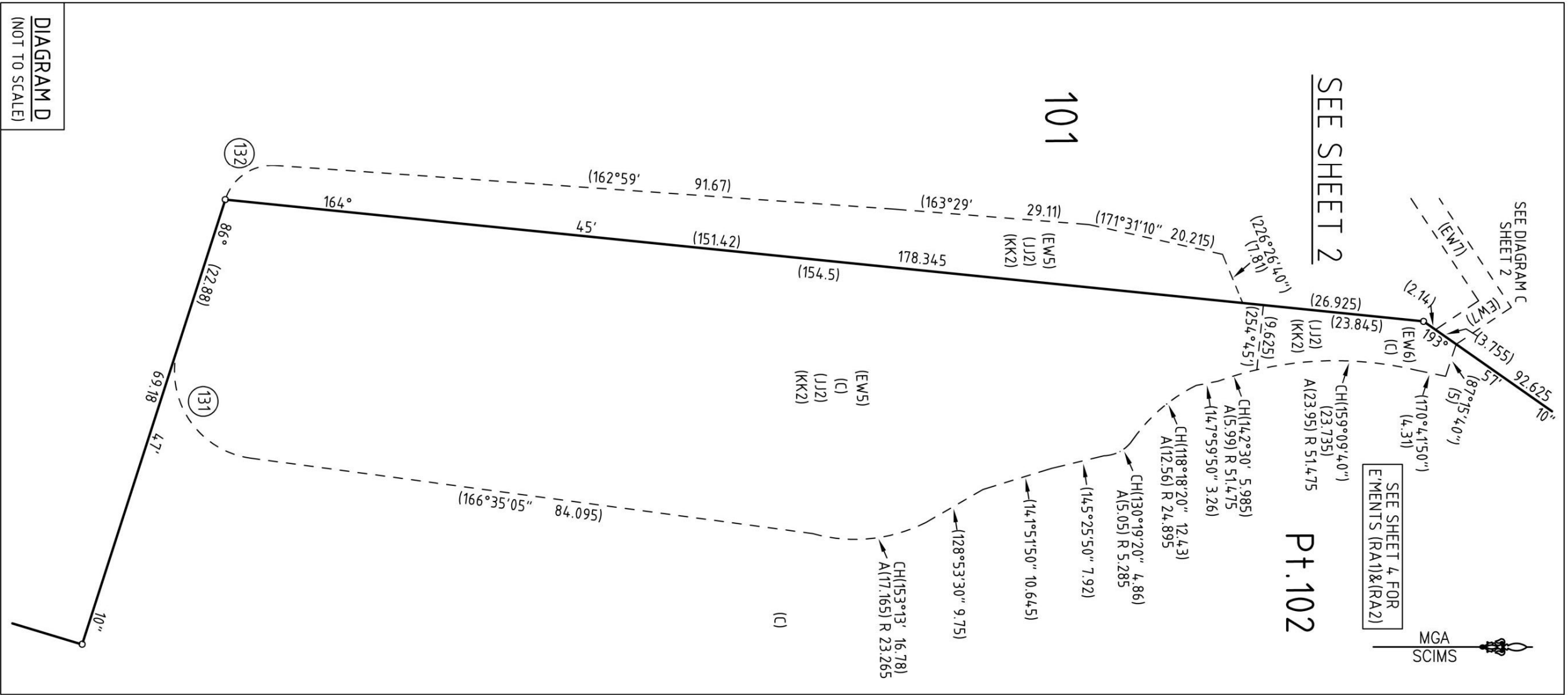
SURVEYOR: PETER ROBERT HOWIE  
 Date of Survey: 24TH APRIL 2021  
 Surveyor's Ref: 10862.DP.002.D

PLAN OF SUBDIVISION OF LOT 1 IN DP1261030

L.G.A.: PENRITH  
 Locality: ERSKINE PARK  
 Reduction Ratio: 1:1500  
 Lengths are in metres.

Registered  
 19/05/2021

DP1268632



LINES TABLE	
No.	BEARING DISTANCE
118	(105° 39' 50") (3.39)
119	(15° 38' 10") (7.9)
120	(285° 39' 50") (7.27)
120a	(285° 39' 50") (2.32)
120b	(285° 39' 50") (4.95)
121	(230° 40' 45") (9.015)
122	(15° 38' 10") (1.3)
123	(75° 59' 50") (4.735)
124	(89° 05') (5.54)
125	(107° 34' 20") (7.3)
126	(122° 25' 20") (19.01)
127	(171° 26' 10") (21.065)
128	(210° 11' 40") (11.49)
129	(320° 44' 40") (11.835)
130	(175° 45' 40") (2.26)

ARC SCHEDULE			
No.	BEARING	DISTANCE	ARC RAD
117	(142° 58' 20")	(26.57)	20.3
131	(215° 53')	(19.705)	(22.35)
132	(124° 49' 40")	(9.02)	(9.725)
			7.3

NOTATIONS

- (EWX) THE PT. LOT 102 BENEFITED BY EASEMENTS (EW5) (EW6) (EW7) (EW8)
- (EWY) THE PT. LOT 102 BENEFITED BY EASEMENTS (EW3) (EW4)
- (Z1): THE PART OF EASEMENT (LL), PART OF RESTRICTION ON THE USE OF LAND (JJ) & PART OF POSITIVE COVENANT (KK) TO BE RELEASED.
- (Z2): THE PART OF EASEMENT (LL), PART OF RESTRICTION ON THE USE OF LAND (JJ) & PART OF POSITIVE COVENANT (KK) TO REMAIN.

'DIAGRAM 'G' & DIAGRAM 'H' ON SHEET 4 ALSO SHOW THE LOCATION OF (Z1) & (Z2).

FOR ALL RM SCHEDULES SEE SHEET 4

FOR ALL SS / PM COORDINATES & CONNECTIONS SEE SHEET 5

- NEW EASEMENTS**
- (EW3) EASEMENT TO DRAIN WATER 8.8 WIDE & VARIABLE WIDTH
  - (EW4) EASEMENT TO DRAIN WATER VARIABLE WIDTH (NO.2)
  - (EW5) EASEMENT TO DRAIN WATER VARIABLE WIDTH (NO.3)
  - (EW6) EASEMENT TO DRAIN WATER VARIABLE WIDTH (NO.4)
  - (EW7) EASEMENT TO DRAIN WATER 3.5 WIDE
  - (JJ1) RESTRICTION ON THE USE OF LAND (NO.7)
  - (KK1) POSITIVE COVENANT (NO.8)
  - (JJ2) RESTRICTION ON THE USE OF LAND (NO.9)
  - (KK2) POSITIVE COVENANT (NO.10)
  - (RA1) RIGHT OF ACCESS VARIABLE WIDTH (NO.11)
  - (RA2) RIGHT OF ACCESS VARIABLE WIDTH (NO.13)
- EXISTING EASEMENTS**
- (AA) LAND EXCLUDES MINERALS. SEE CROWN GRANT.
  - (C) RESTRICTION ON THE USE OF LAND (DP111294.7)
  - (JJ) RESTRICTION ON THE USE OF LAND (DP1261354)(No.5)
  - (KK) POSITIVE COVENANT (DP1261354) (No.6)
  - (LL) EASEMENT TO DRAIN WATER VARIABLE WIDTH (DP1261354)
  - (Y) EASEMENT FOR TRANSMISSION LINE 121.92 WIDE (GOV. GAZ 16-10-64 - J924492)
  - (Z) EASEMENT FOR TRANSMISSION LINE 60.96 WIDE & VARIABLE WIDTH (DP1153614)

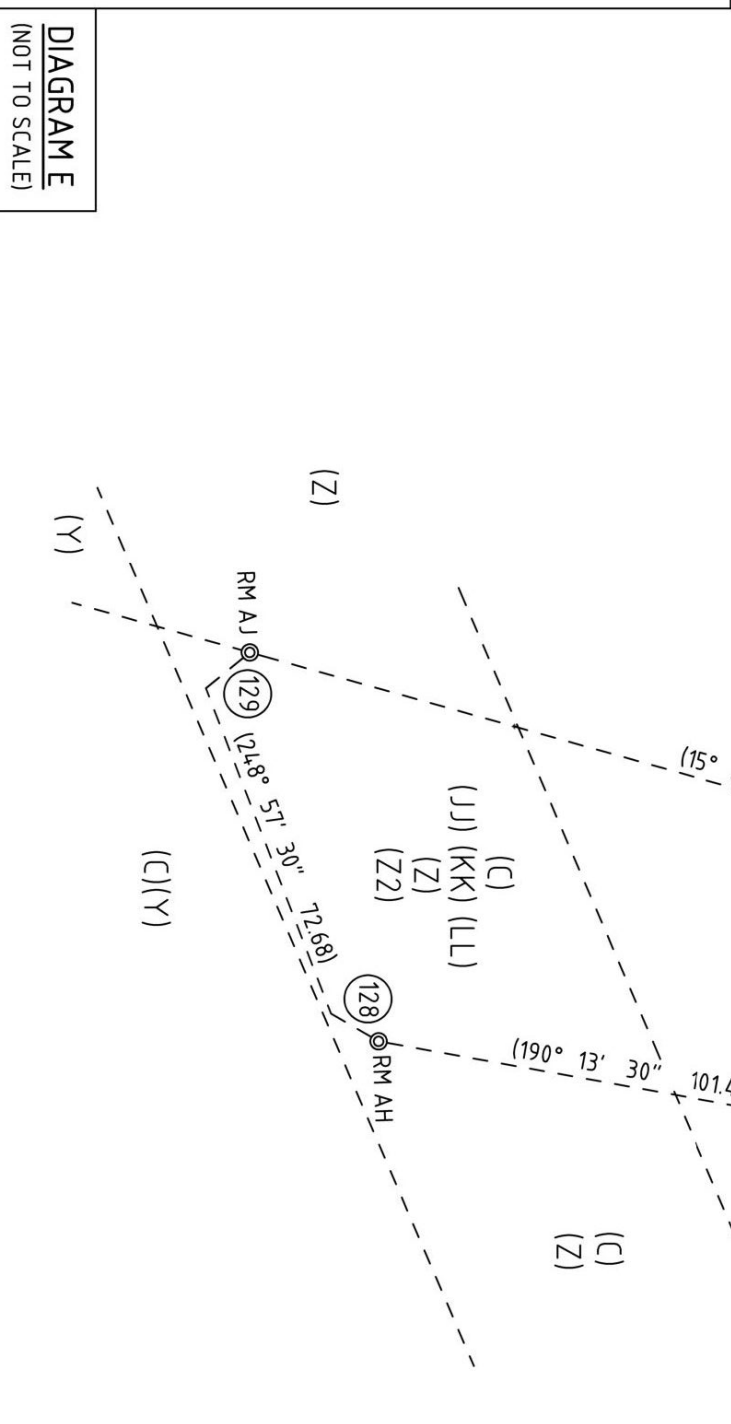
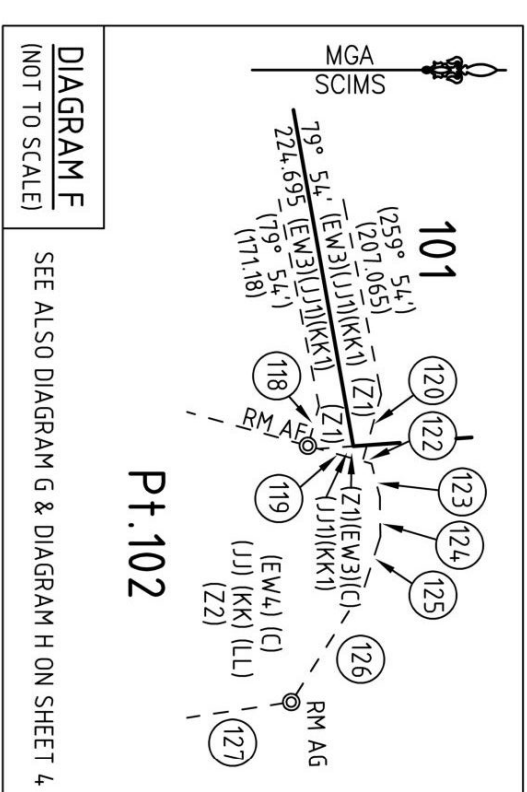
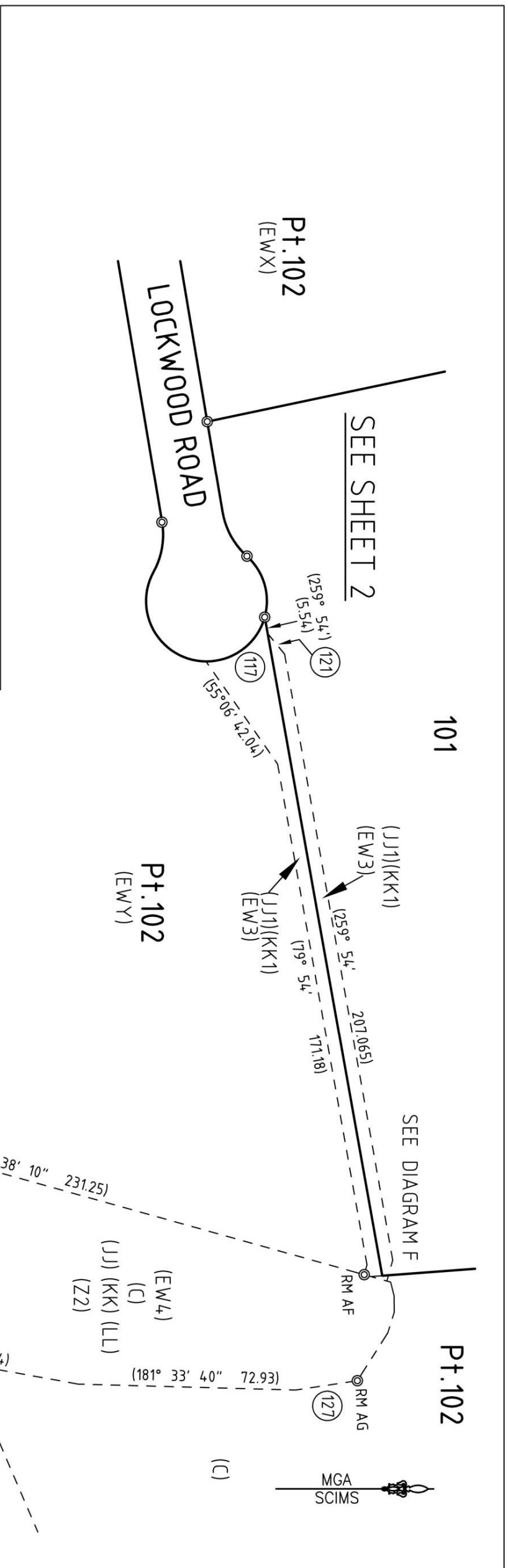


DIAGRAM D  
(NOT TO SCALE)

DIAGRAM E  
(NOT TO SCALE)

DIAGRAM F  
(NOT TO SCALE)

DIAGRAM G  
(NOT TO SCALE)

SURVEYOR: PETER ROBERT HOWIE  
 Date of Survey: 24TH APRIL 2021  
 Surveyor's Ref: 10862 DP 002D  
 PLAN OF SUBDIVISION OF LOT 1 IN DP1261030

L.G.A.: PENRITH  
 Locality: ERSKINE PARK  
 Reduction Ratio: 1:1500  
 Lengths are in metres.  
 Registered  
 19/05/2021

DP1268632

SCHEDULES OF REFERENCE MARKS

SCHEDULE OF REFERENCE MARKS - A - W

RM	BEARING	DISTANCE	DESCRIPTION	ORIGIN
A	164°51'30"	3.535	RM DH&W FD	DP1261354
B	159°38'10"	16.83	RM DH&W FD	DP1261354
C	190°51'30"	3.895	RM DH&W FD	DP1261354
D	171°42'10"	16.835	RM DH&W FD	DP1261354
E	209°24'40"	4.87	RM DH&W FD	DP1261354
F	157°54'20"	16.76	RM DH&W FD	DP1261354
G	170°29'30"	13.2	RM DH&W FD	DP1261354
H	95°26'40"	20.615	RM DH&W	PLACED
I	135°07'30"	3.72	RM DH&W	PLACED
J	187°23'	3.72	RM DH&W	PLACED
K	171°52'	16.89	RM DH&W	PLACED
L	35°38'	3.975	RM DH&W	PLACED
M	3°09'	3.72	RM DH&W	PLACED
N	354°56'10"	16.96	RM DH&W	PLACED
O	38°53'	0.925	RM GIP FD	DP1261030
P	87°03'	1.005	RM GIP FD	DP1261030
Q	83°37'	1.03	RM GIP FD	DP1261030
R	81°03'	1.065	RM GIP FD	DP1261030
S	180°47'	15.17	RM GIP FD	DP1270382
T	96°41'	16.57	RM DH&W FD	DP1261030
U	100°03'	26.88	RM DH&W FD	DP1261030
V	178°22'	8.4	RM DH&W FD	DP1261030
W	177°46'	22.55	RM DH&W FD	DP1261030
X	177°46'	8.55	RM DH&W FD	DP1261030
Y	177°08'	22.71	RM DH&W FD	DP1261030
Z	190°20'	10.805	RM SS205625 FD	BY DP1261030
	74°51'50"	32.385	SS205625 FD	
	71°06'30"	52.095	(CALC DP1270382 & SURVEY)	
	168°07'	0.625	RM GIP	PLACED
	208°22'	28.85	RM DH&W FD	DP1270382
	205°41'20"	25.56	RM SS205625 FD	DP1270382
	124°35'	0.52	RM GIP	PLACED
	201°42'50"	2.05	RM GIP FD	DP1270382
	193°57'	0.83	RM GIP	PLACED

SCHEDULE OF REFERENCE MARKS - BA - BX

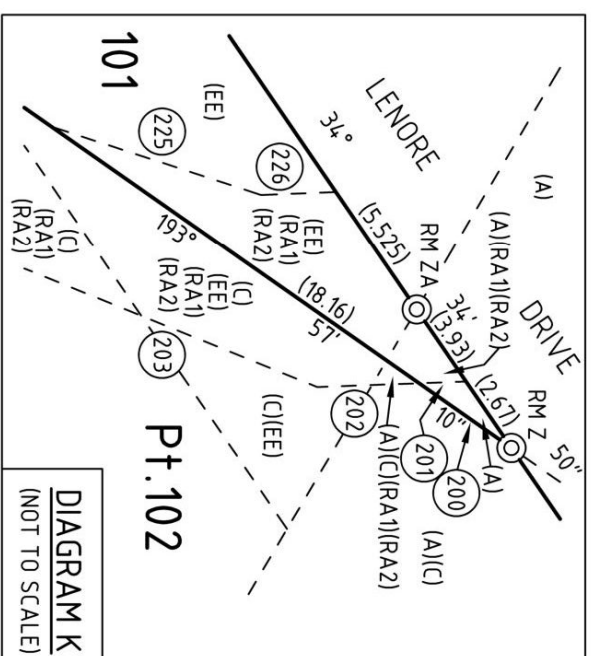
RM	BEARING	DISTANCE	DESCRIPTION	ORIGIN
AA	271°27'	0.47	RM GIP FD	DP 595535
AB	222°35'	3.85	RM GB FD	REF. BY DP132214 & SURVEY PLACED BY DP64.7320
AC	115°42'4.0"	0.965	RM GIP FD	DP 11571476
AD	RM GONE (DP11571476)		DH&W'S FD AT CUR	
AE	23°39'	2.715	RM DH&W FD	DP1261354
AF	236°44'	6.495	RM DH&W FD	DP1261354
AG	101°07'30"	3.035	RM GIP FD	DP 11571476
AH	194°49'4.0"	0.765	RM GIP FD	DP 11571476
AI	65°20'	2.0	RM GIP FD	DP1261354
AJ	171°26'	2.0	RM GIP FD	DP1261354
AK	280°13'30"	2.0	RM GIP FD	DP1261354
AL	105°38'10"	2.0	RM GIP FD	DP1261354

NEW EASEMENTS

- (EW3) EASEMENT TO DRAIN WATER 8.8 WIDE & VARIABLE WIDTH
- (EW4) EASEMENT TO DRAIN WATER VARIABLE WIDTH (NO.2)
- (UJ1) RESTRICTION ON THE USE OF LAND (NO.7)
- (KK1) POSITIVE COVENANT (NO.8)
- (RA1) RIGHT OF ACCESS VARIABLE WIDTH (NO.11)
- (RA2) RIGHT OF ACCESS VARIABLE WIDTH (NO.13)

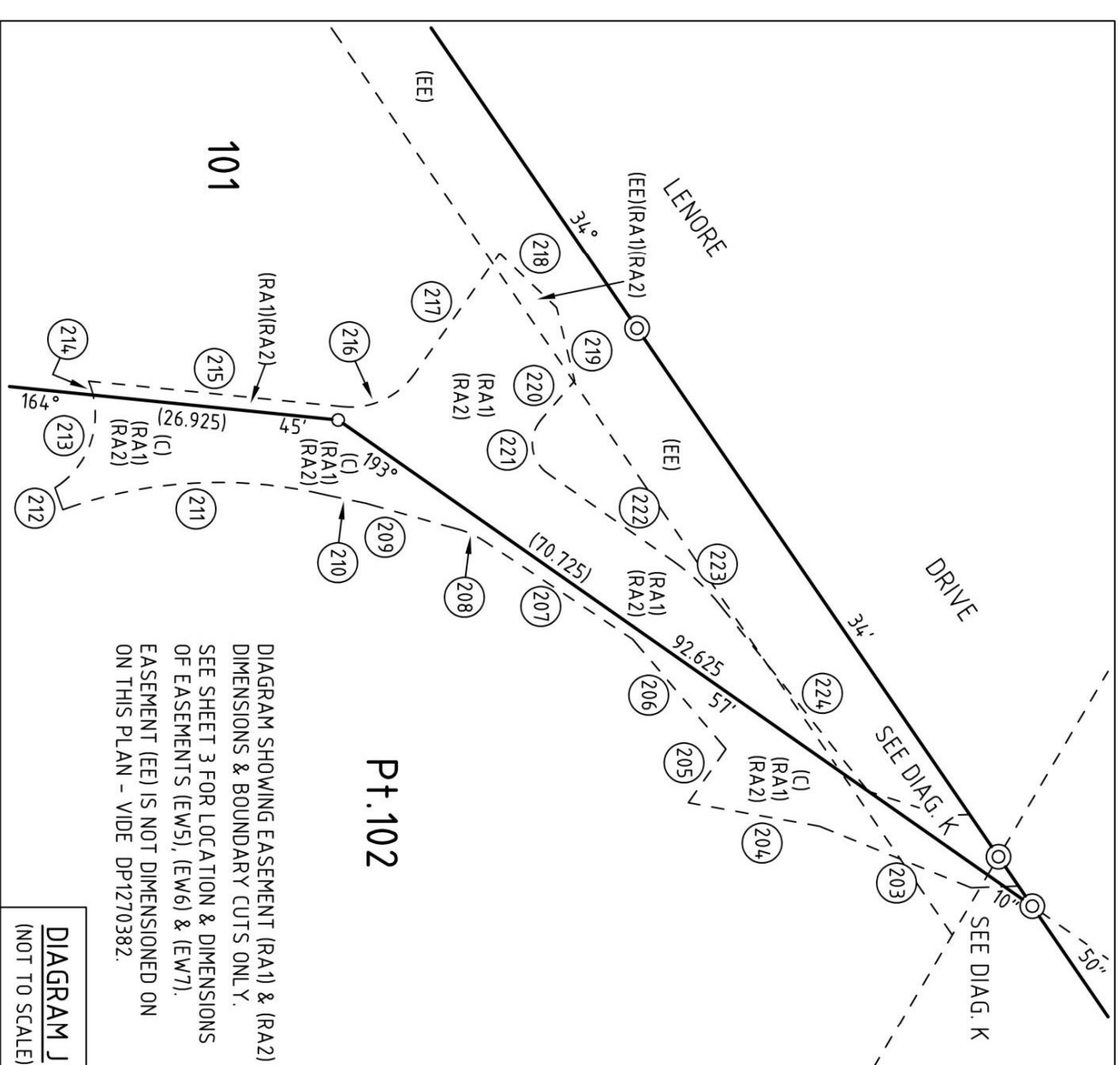
EXISTING EASEMENTS

- (C) RESTRICTION ON THE USE OF LAND (DP111294.7)
  - (EE) EASEMENT FOR UNDERGROUND CABLES 9 WIDE & VARIABLE WIDTH (AQ889589)
  - (UJ) RESTRICTION ON THE USE OF LAND (DP1261354)(No.5)
  - (KK) POSITIVE COVENANT (DP1261354)(No.6)
  - (LL) EASEMENT TO DRAIN WATER VARIABLE WIDTH (DP1261354)
- NOTATIONS
- (EWY) THE Pt. LOT 102 BENEFITED BY EASEMENTS (EW3) (EW4)
  - (Z1) THE PART OF EASEMENT (LL), PART OF RESTRICTION ON THE USE OF LAND (UJ) & PART OF POSITIVE COVENANT (KK) TO BE RELEASED.
  - (Z2) THE PART OF EASEMENT (LL), PART OF RESTRICTION ON THE USE OF LAND (UJ) & PART OF POSITIVE COVENANT (KK) TO REMAIN.

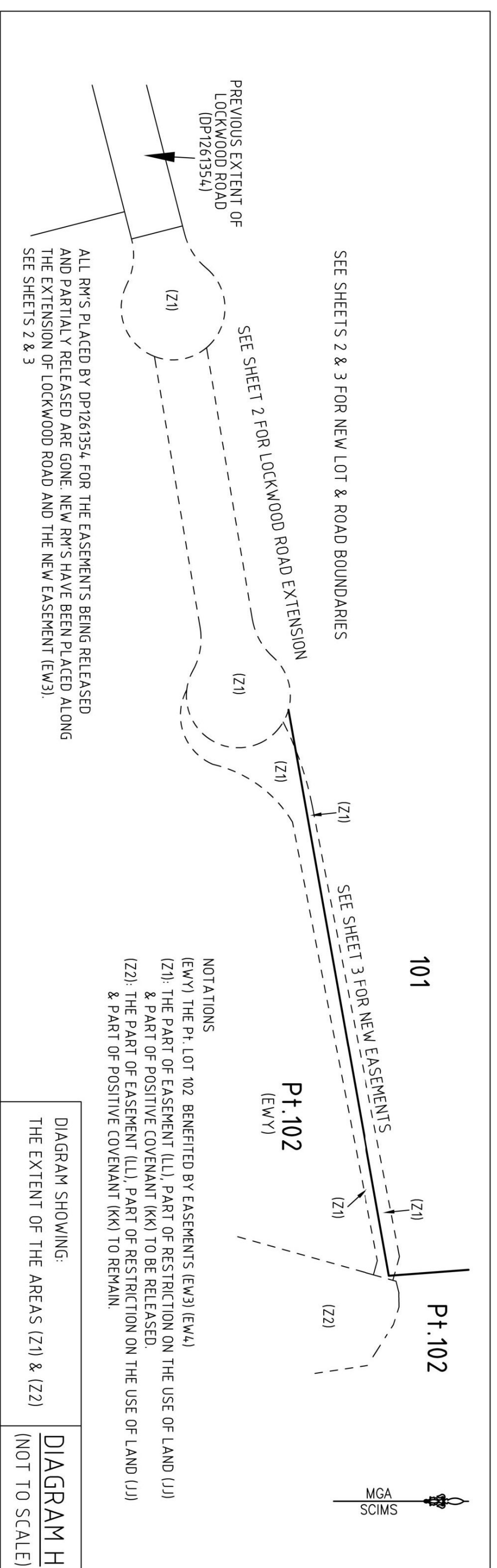
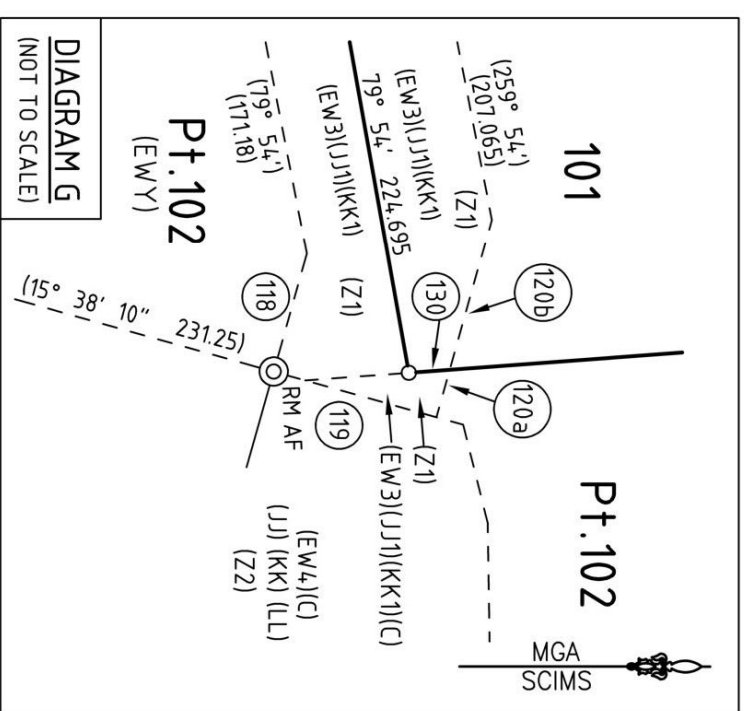


LINES TABLE		LINES TABLE	
No.	BEARING DISTANCE	No.	BEARING DISTANCE
200	(193° 57' 10") (3.74)	212	(229° 10') (2.545)
201	(156° 48' 20") (1.555)	215	(34.4° 4.2') (27.94)
202	(156° 48' 20") (3.615)	217	(284° 09' 40") (16.18)
203	(181° 00' 10") (17.91)	218	(22° 35' 30") (8.61)
204	(169° 05' 4.0") (14.545)	219	(55° 08' 10") (8.245)
205	(283° 57' 10") (7.17)	220	(109° 4.0' 4.0") (5.605)
206	(208° 35' 10") (5.75)	222	(13° 53' 50") (16.67)
207	(192° 26') (19.41)	224	(30° 26' 30") (25.86)
209	(174° 41') (10.56)	225	(356° 59' 50") (8.595)
210	(170° 4.2' 10") (4.31)	226	(336° 48' 20") (2.925)

ARC SCHEDULE			
No.	BEARING	DISTANCE	ARC
208	(183°33'30")	(3.085)	(3.1)
211	(155°49'40")	(28.945)	(29.355)
213	(271°19'20")	(10.955)	(11.685)
214	(231°03')	(1.61)	(1.61)
216	(314°25'50")	(8.57)	(8.98)
221	(61°47'10")	(5.935)	(6.685)
223	(22°10'10")	(7.195)	(7.22)



FOR ALL RM SCHEDULES SEE THIS SHEET  
FOR ALL SS / PM COORDINATES & CONNECTIONS SEE SHEET 5



ALL RMs PLACED BY DP1261354 FOR THE EASEMENTS BEING RELEASED AND PARTIALLY RELEASED ARE GONE. NEW RMs HAVE BEEN PLACED ALONG THE EXTENSION OF LOCKWOOD ROAD AND THE NEW EASEMENT (EW3).  
SEE SHEETS 2 & 3

NOTATIONS

- (EWY) THE Pt. LOT 102 BENEFITED BY EASEMENTS (EW3) (EW4)
- (Z1) THE PART OF EASEMENT (LL), PART OF RESTRICTION ON THE USE OF LAND (UJ) & PART OF POSITIVE COVENANT (KK) TO BE RELEASED.
- (Z2) THE PART OF EASEMENT (LL), PART OF RESTRICTION ON THE USE OF LAND (UJ) & PART OF POSITIVE COVENANT (KK) TO REMAIN.

DIAGRAM SHOWING:  
THE EXTENT OF THE AREAS (Z1) & (Z2)  
DIAGRAM H  
(NOT TO SCALE)

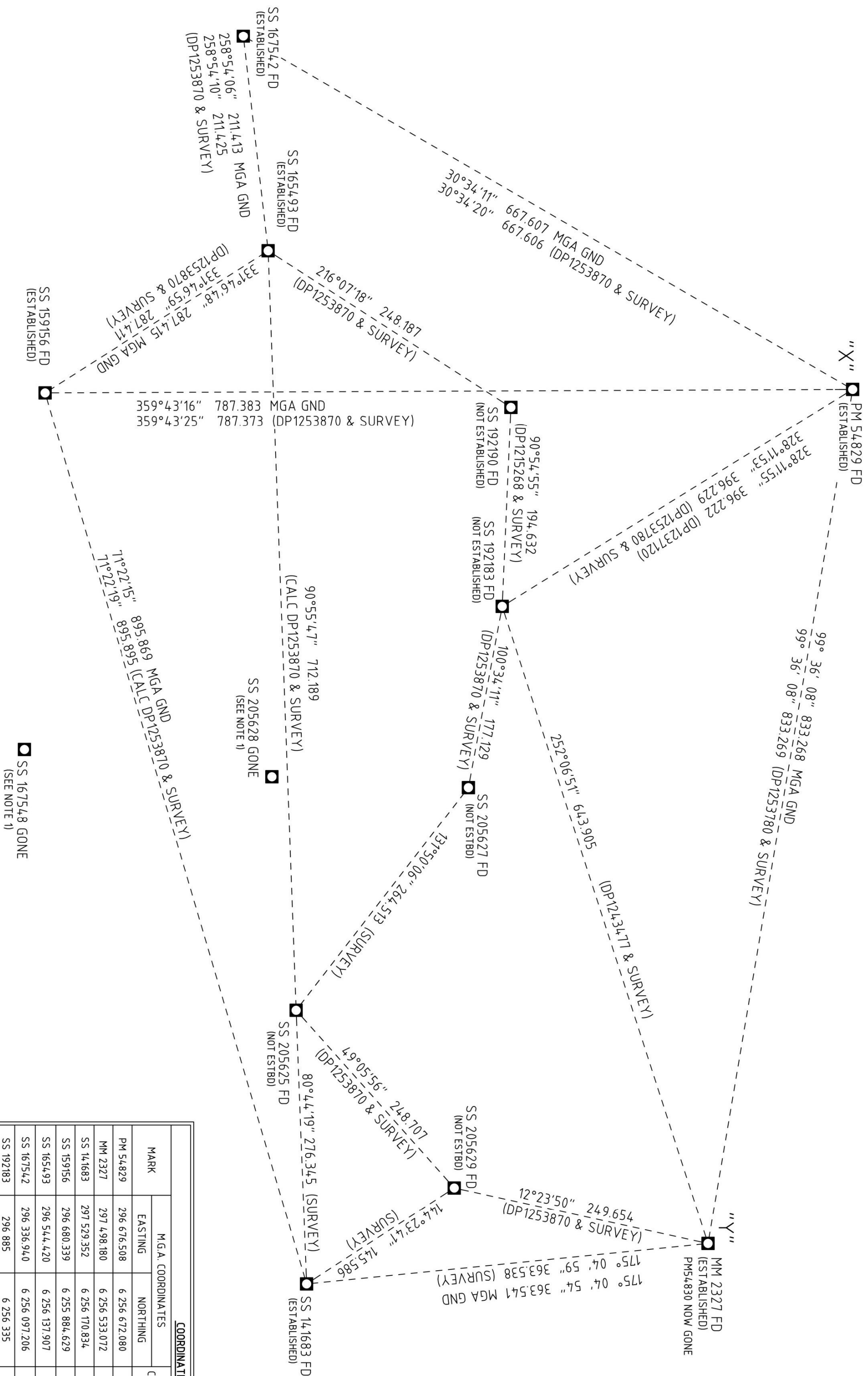
SURVEYOR: PETER ROBERT HOWIE  
Date of Survey: 24TH APRIL 2021  
Surveyor's Ref: 10862 DP 002 D

PLAN OF SUBDIVISION OF LOT 1 IN DP1261030

L.G.A.: PENRITH  
Locality: ERSKINE PARK  
Reduction Ratio: 1:1500  
Lengths are in metres.

Registered  
19/05/2021

DP1268632



MARK	MGA COORDINATES		CLASS	PU	METHOD	STATE
	EASTING	NORTHING				
PM 54829	296 676 508	6 256 672 080	B	N/A	FROM SCIMS	FOUND
NM 2327	297 498 180	6 256 533 072	B	N/A	FROM SCIMS	FOUND IN PMS4830 BOX
SS 141683	297 529 352	6 256 170 834	C	N/A	FROM SCIMS	FOUND
SS 159156	296 680 339	6 255 884 629	C	N/A	FROM SCIMS	FOUND
SS 165493	296 544 420	6 256 137 907	C	N/A	FROM SCIMS	FOUND
SS 167542	296 336 940	6 256 097 206	C	N/A	FROM SCIMS	FOUND
SS 192183	296 885	6 256 335	U	N/A	TRAVERSE	FOUND
SS 192190	296 691	6 256 338	U	N/A	FROM SCIMS	FOUND
SS 205625	297 257	6 256 126	U	N/A	TRAVERSE	FOUND
SS 205627	297 059	6 256 303	U	N/A	TRAVERSE	FOUND
SS 205629	297 445	6 256 289	U	N/A	TRAVERSE	FOUND

NOTE 1: SS167548 & SS205628 GONE DUE TO COMPASS DRIVE CONSTRUCTION BY PERSONS UNKNOWN

DATE OF SCIMS COORDINATES: 28-02-2021 MGA ZONE 56 MGA DATUM: MGA2020  
 COMBINED SCALE FACTOR: 1.000097

SURVEYOR: PETER ROBERT HOWIE  
 Date of Survey: 24TH APRIL 2021  
 Surveyor's Ref: 10862.DP.002.D

PLAN OF SUBDIVISION OF LOT 1 IN DP1261030

L.G.A.: PENRITH  
 Locality: ERSKINE PARK  
 Reduction Ratio: 1:1500  
 Lengths are in metres.

Registered  
 19/05/2021

DP1268632

