

# Monthly Report



CLIENT: Catholic Diocese of Parramatta

SITE: Corpus Christie VMA

MONTH: April 2015

HOURS: 24

Toolijooa Pty Ltd ABN 64 095 536 388  
 PO Box 406 Mona Vale NSW 1660  
 Phone: 9986 1859 Fax: 9986 1858

## DESCRIPTION OF WORK

Hours	Area Worked m <sup>2</sup>	Type of Work	Weed Type	Work Description
8	5000 m <sup>2</sup>	Planting	N/A	<ul style="list-style-type: none"> <li>70 plants from the landscape plan were planted in the Western-most VMA within the school land area which included:                             <ul style="list-style-type: none"> <li>- 23 <i>Acacia falcata</i>,</li> <li>- 23 <i>Kunzea ambigua</i></li> <li>- 24 <i>Angophora bakeri</i></li> </ul> </li> </ul> <p>An additional 42 plants were installed to make to bring the total plants installed to 112 as per the landscape plans. These included:</p> <ul style="list-style-type: none"> <li>- 7 <i>Allocasuarina torulosa</i>,</li> <li>- 6 <i>Hakea sericea</i>,</li> <li>- 14 <i>Melaleuca decora</i></li> <li>- 15 <i>Ozothamnus diosmifolius</i></li> </ul>
16	2200 m <sup>2</sup>	Maintenance	Herbaceous	<ul style="list-style-type: none"> <li>Conducted a herbaceous weeds sweep throughout the site. Hand weeded and hand matted herbaceous weeds from the VMA along property fence line and in school grounds. Species targeted were <i>Aloe</i> sp., <i>Bidens pilosa</i>, <i>Ehrharta erecta</i>, <i>Eragrostis curvula</i>, <i>Opuntia stricta</i>, <i>Paspalum dilatatum</i>, <i>Senecio madagascariensis</i>, <i>Setaria</i> sp., <i>Sida rhombifolia</i> and <i>Sonchus oleraceus</i>.</li> </ul>

**Note:**

- All spraying utilised a 1% solution of 'Roundup Biactive®' unless stated otherwise.
- All cut/scrape and painting and drill and stem injecting was done using neat 'Roundup Biactive®'.

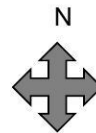
# Monthly Report

## Site Map:



Corpus Christie Cranebrook, VMA

Date: April 2015



	Woody	Herbaceous	Vines	Planting
Primary				
Secondary				
Maintenance				

Source: SLR Global Environmental Solutions

Not to scale

**From:** Dominic Noonan [mailto:[Dominic.Noonan@toolijooa.com.au](mailto:Dominic.Noonan@toolijooa.com.au)]  
**Sent:** Wednesday, May 13, 2015 11:43 AM  
**To:** Katrina Griffin  
**Subject:** RE: Toolijooa April invoice & Report -Corpus Christie

To Whom it May Concern,

The translocated *Grevillea juniperina species* from the Cassar Crescent –Cranebrook development will be transplanted back onto the site within 3 months of the issue of the subdivision certificate. An exact date is not feasible at this stage due to the delicate nature of the specimens being translocated but this time frame is more than enough time to allow for the specimens to be ready for translocation.

Regards,

Dominic Noonan  
Western Sydney Project Manger Bush Regeneration  
Toolijooa Environmental Restoration  
M: 0410 611 859  
P: 9986 1859  
E: [Dominic.Noonan@toolijooa.com.au](mailto:Dominic.Noonan@toolijooa.com.au)

