

REFERENCE DOCUMENT REGISTER

DISCIPLINE	DRAWING No.	REVISION OR DATE
ARC-I		
HYDRAULIC		
MECH		
INTERIOR DESIGN		
KITCHEN/BAR		
OTHER		

Jordan Springs Village Oval

- NOTES:
- Haron Robson is the owner of the copyright subsisting in these drawings and specifications which must not be reproduced or copied without prior written consent.
 - Do not scale drawing. Verify all dimensions on site.
 - Outlet locations are diagrammatic only, refer to Architect's drawings for exact location.
 - No variations to the extent of the work shall be undertaken without prior written consent.
 - This drawing is an annexure to the specification & shall be read in conjunction with the specification & schedules.
 - The exact location of all equipment shall be determined on site and as directed by the Project Manager.
 - Remove all redundant equipment & cabling and make good.

Legend

General lighting

- Letter denotes discrete type - refer to separate luminaire schedule for details
- Fluorescent enclosed - nom. 1200 long
- LED light
- Spotlight - directed as indicated
- Area light - directed as indicated
- Lighting pole/mast

Emergency lighting

- Emergency light tungsten halogen
- Emergency enclosed - fluorescent - nom. 1200 long

Power

- Power outlet, single, one phase, 10amp unless otherwise noted
- Power outlet, double, one phase, 10amp unless otherwise noted
- Permanent connection with isolating switch
- Permanent connection without isolating switch

Switching

- Light switch panel (See detail) e.g. SPA = Switch panel 'A'
- Switchwire to:- SPA = Light switch panel 'A', D = local dimmer, S = local switch, X = switch or dimmer number
- Local light switch 15amp SP one way & switchwire unless otherwise noted: D = local dimmer, 2W = two way switching, INT = intermediate switching
- Light control circuit and number - G1/A = dimmer unit 'G1/A', D = programmable dimmer controlled output, S = programmable switcher controlled output, X = channel number
- Daylight switch photoelectric cell for outdoor use
- Time clock

Reticulation

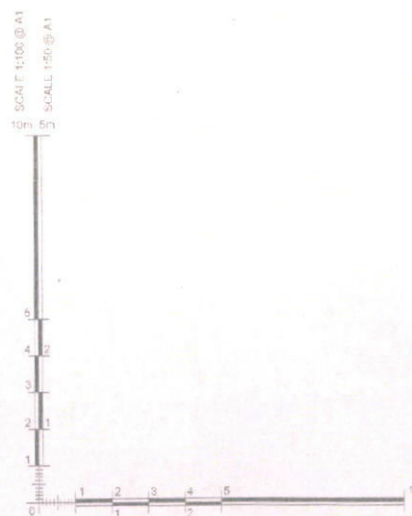
- New main switchboard
- Meter Panel
- Control panel
- Circuit designation:
 - 1st character = Floor level
 - 2nd character = DB number
 - 3rd character = P (power), L (lighting), PC (poker machine power - controlled - ref control circuit), DP (data power - uncontrolled), SC (signage power - controlled via lighting network), SP (signage power - uncontrolled)
 - 4th character = Circuit number
 - SB = Connect to standby bus at DB
 - CC = Contactor controlled
 - RCD = Via residual current device/circuit breaker on DB
- Services reticulation: E = electrical, C = communications, S = security
- Circuit connection
- Circuit crossover
- Electrical Pit
- Lighting Protection Earth Rod to AS1768

General key to symbols

- Switch 1350 A.F.F.L. to centre
- Outlet 300 A.F.F.L. to centre (except in wet areas - minimum 450)
- Outlet in skirting or wall duct where shown
- NR Neon indicating "on", R = red
- 1200 1200mm above finished floor level
- AB Mounted above bench nom. 1050 A.F.F.L.
- UB Mounted under bench nom. 600 A.F.F.L.
- W Weather resistant protected IP 33 minimum
- WP Weather resistant protected IP 56 minimum
- CR Colour plate eg. R = red etc
- SS Stainless steel plate
- K Key lockable
- P Pendant type - high impact polycarbonate with locking screw ring
- IF Floor mounted in flush recessed accessible enclosure
- FM Floor mounted in surface mounted enclosure
- SH Safety shutters
- CS Mounted in ceiling space
- C Mounted on ceiling
- DIS Special outlet for disabled persons Cipsal Prestige range, mount 1000 A.F.F.L.
- EXG Existing equipment
- RP Round Earth Pin
- AS Auto Switched

Switchboard

- Busbar no. of bars = no. of phases
- Circuit breaker, rating in amps
- Current transformer, one for each phase with removable links
- Isolator
- Removable link in each phase
- Residual current device
- Maximum demand indicator
- Voltmeter
- Power analyser
- Ammeter
- Cable number, refer to reticulation schedule
- Substation Transformer
- Kilowatt hour meter
- Fault current limiter
- Surge diverter
- Power Factor Correction Unit



NOTE: All symbols may not necessarily be used in the documents

<p>Consultant: Lighting, Electrical and Audio-Visual</p> <p>HARON ROBSON light matters watt matters av matters</p> <p>188 First Avenue Five Dock NSW 2048 PO Box 983 Five Dock NSW 2048 T +61 2 9712 6644 F +61 2 9712 6699</p> <p>WE UNDERSTAND AUDIO VISUAL, LIGHTING, ENERGY AND ELECTRICAL SYSTEMS AND ADVISE ON THESE ISSUES WORLDWIDE.</p>		<p>Project: JORDAN SPRINGS VILLAGE OVAL</p>	<p>Architect: SUTERS ARCHITECTS PTY LTD</p>	<p>Client: CLOUSTON ASSOCIATES</p>	<p>Drawing Title: ELECTRICAL SERVICES LEGEND</p>	<p>Date Printed: 15/03/15-16/14</p> <p>Scale: N.T.S.</p> <p>Sheet: A1</p> <p>Drawn: PO</p> <p>Checked: SEPT, 2014</p> <p>Project No.: 13657</p> <p>No. in Set/Drawing No.: 05/ES101</p> <p>Issue: A</p>
---	--	---	---	------------------------------------	--	---

REFERENCE DOCUMENT REGISTER

DISCIPLINE	DRAWING NO.	REVISION OR DATE
ARCH	05/ES/102	8 JULY 2013
HYDRAULIC		
MECH		
INTERIOR DESIGN		
KITCHEN/BAR		
OTHER		



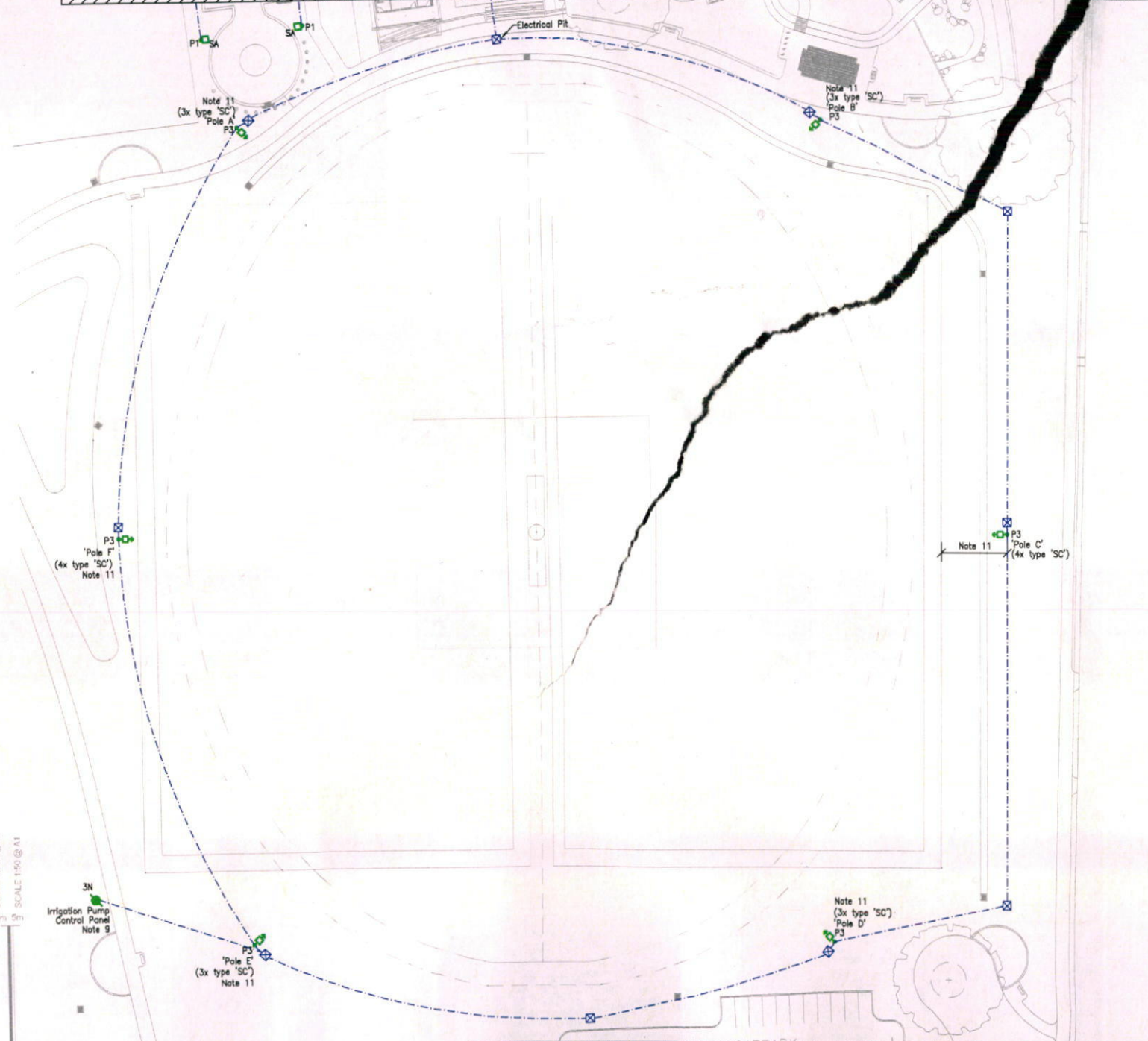
NOTES:

- All lighting shall be fitted with SMS control system, to be approved by Penrith City Council.
- All Irrigation and Hydraulic power requirements to be confirmed with Irrigation and Hydraulic Contractors.
- All PE cell and Timer settings to be coordinated with car park opening and closing times to be confirmed by Penrith City Council.
- Maintain minimum 5m clearance from edge of Playing Field to closest edge of type 'P3' pole.

NOTES:

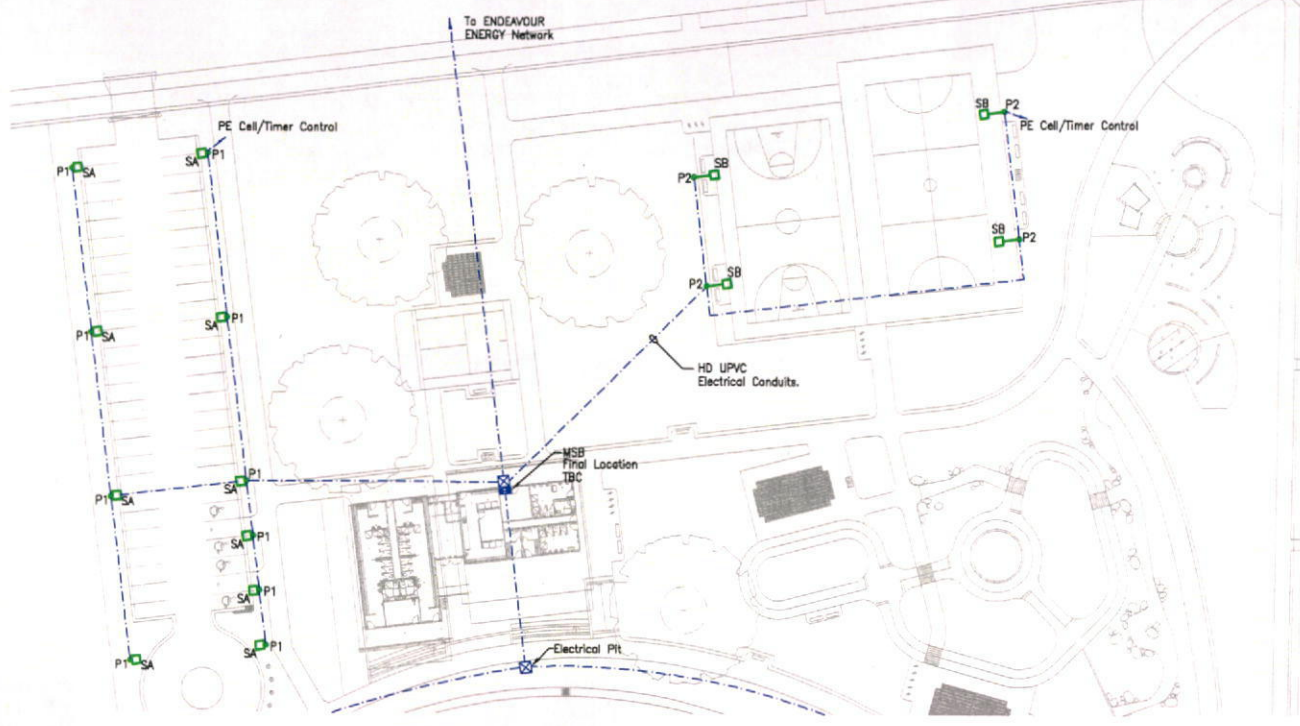
- Haron Robson is the owner of the copyright subsisting in these drawings and specifications which must not be reproduced or copied without prior written consent.
- Do not scale drawing. Verify all dimensions on site.
- Outlet locations are diagrammatic only, refer to Architect's drawings for exact location.
- No variations to the extent of the work shall be undertaken without prior written consent.
- This drawing is an annexure to the specification & shall be read in conjunction with the specification & schedules.
- The exact location of all equipment shall be determined on site and as directed by the Project Manager.
- Lighting circuits controlled by time clock and/or photoelectric switch (refer to detail on drawings) shall be provided with two switch wires from each light to the time clock and photoelectric contactors in the relevant switchboards.

FOR CONTINUATION REFER TO PART PLAN A



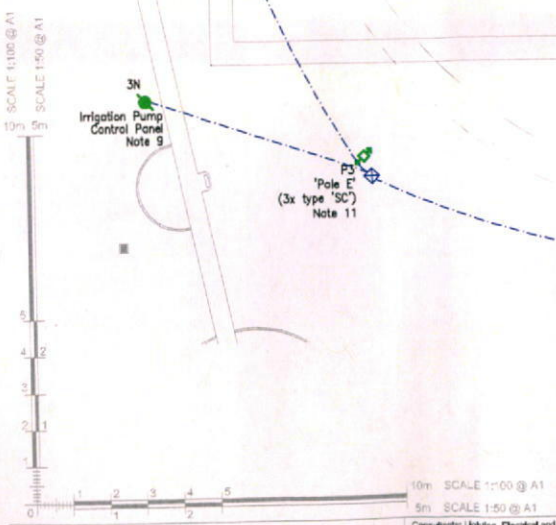
FOR CONTINUATION REFER TO PART PLAN B

Sporting Oval
Power and Lighting Layout
Scale 1:500



Part Plan A -
New Carpark, Netball/Basketball Courts
Power and Lighting Layout
Scale 1:500

Car Park Services Deleted.
No longer part of this work



Issue	Description	Date
B	CC RE-ISSUE	05-02-15
A	CC ISSUE	15-10-14
P2	PRELIMINARY ISSUE	14-10-14
P1	PRELIMINARY ISSUE	03-10-14



181 First Avenue Five Dock NSW 2046
PO Box 603 Five Dock NSW 2046
T +61 2 9732 6644
F +61 2 9732 6666
WE UNDERSTAND AUDIO VISUAL LIGHTING ENERGY AND ELECTRICAL SYSTEMS AND ADVISE ON THESE ISSUES WORLDWIDE.

Project:
JORDAN SPRINGS
NORTHERN ROAD OVAL

Architects:
SUTERS ARCHITECTS PTY LTD

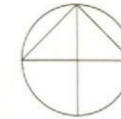
Client:
CLOUSTON ASSOCIATES

Drawing Title:
ELECTRICAL SERVICES
POWER AND LIGHTING LAYOUT

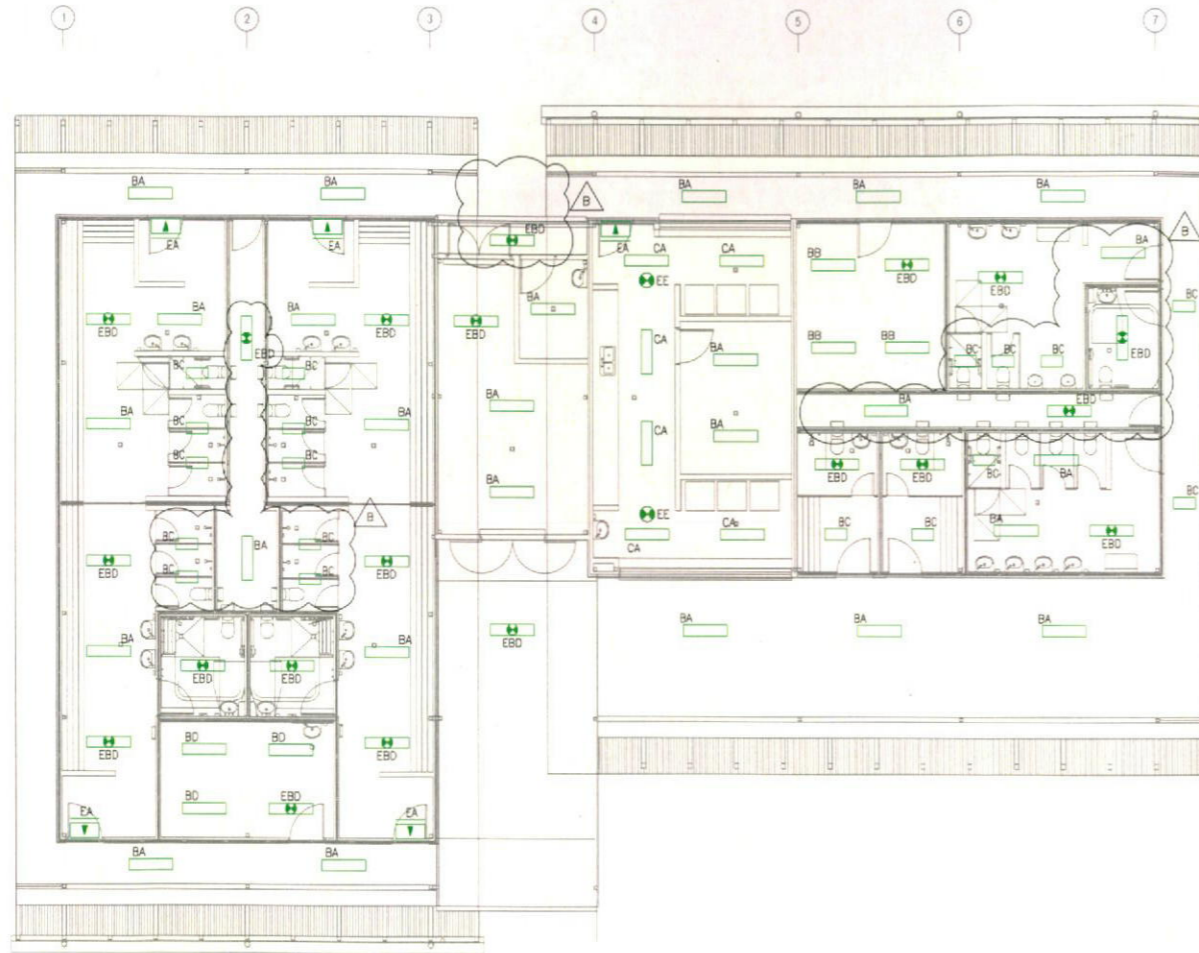
Drawn	Scale	Shr Size	Drawn	Check	Date
PC	1:500	A1	PC		JULY, 2013
Project No	No. In Set/Drawing No		Issue		
13657	05/ES102		B		

REFERENCE DOCUMENT REGISTER

DISCIPLINE	DRAWING No	REVISION OR DATE
ARCH	421	3 05/15 E. 12.04.15
	425	5 05/14 E. 12.04.15
HYDRAULIC		
MECH		
INTERIOR DESIGN		
KITCHEN/BAR		
OTHER		

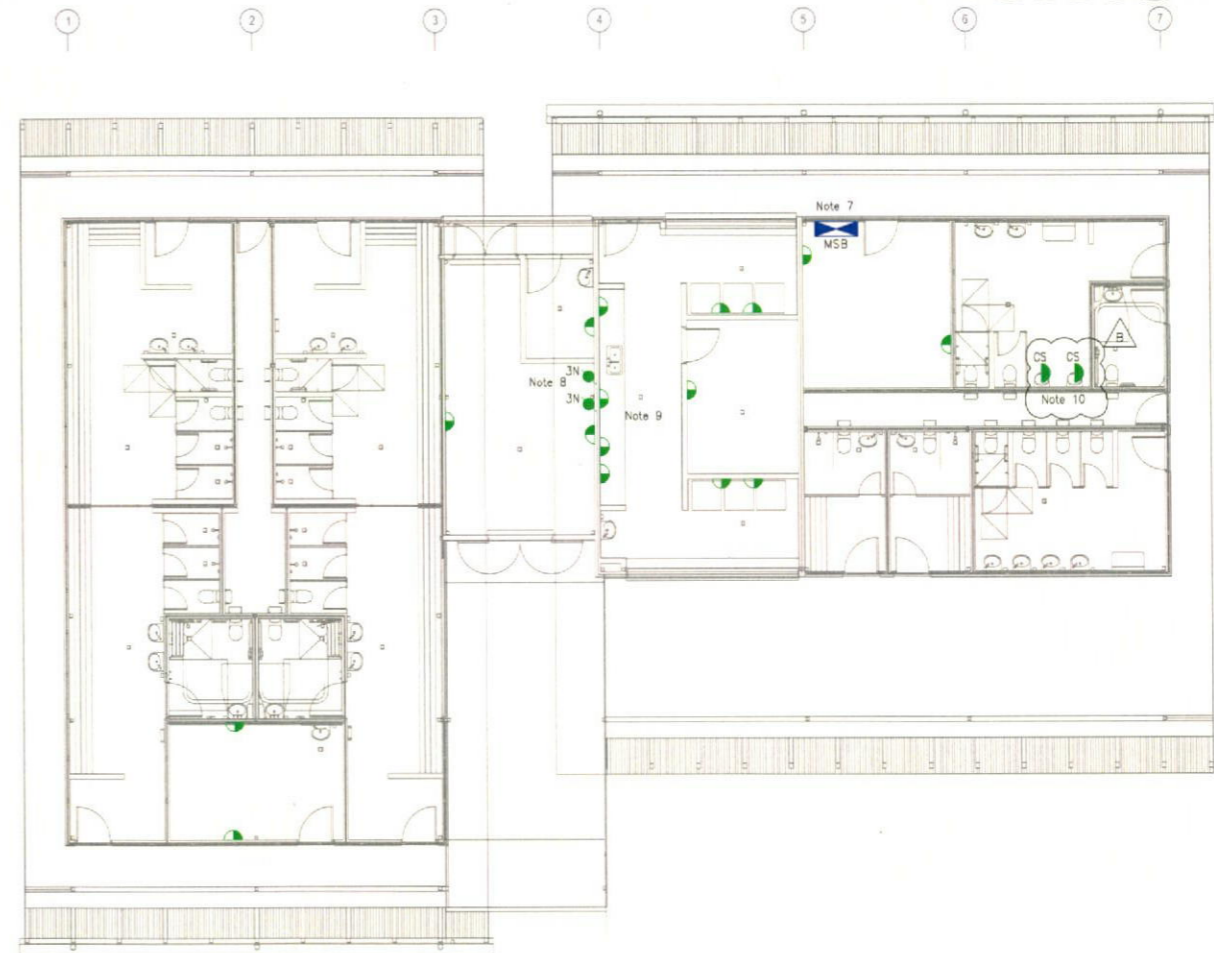


- NOTES:
- Haron Robson is the owner of the copyright subsisting in these drawings and specifications which must not be reproduced or copied without prior written consent.
 - Do not scale drawing. Verify all dimensions on site.
 - Outlet locations are diagrammatic only, refer to Architect's drawings for exact location.
 - No variations to the extent of the work shall be undertaken without prior written consent.
 - This drawing is an annexure to the specification & shall be read in conjunction with the specification & schedules.
 - The exact location of all equipment shall be determined on site and as directed by the Project Manager.
 - MSB cupboard details & location to be finalised with architect. Location and sizing to be in accordance with AS3000.
 - All electrical supplies to hydraulic services to be confirmed & co-ordinated with hydraulic contractor.
 - Kiosk electrical layout to be co-ordinated with final equipment selection and locations.
 - GPO's mounted in ceiling space to urinal sensors. Coordinate with Hydraulic Contractor.



Ammenities Building
Lighting Layout

Scale 1:100



Ammenities Building
Power Layout

Scale 1:100

SCALE 1:100 @ A1
SCALE 1:50 @ A1

10m 5m



10m SCALE 1:100 @ A1
5m SCALE 1:50 @ A1

Consultants Lighting, Electrical and Audio Visual

HARON ROBSON
lightmatters wattmatters armmatters

181 First Avenue Five Dock NSW 2048
PO Box 963 Five Dock NSW 2048
T +61 2 9712 5544
F +61 2 9712 5588

WE UNDERSTAND AUDIO VISUAL, LIGHTING, ENERGY AND ELECTRICAL SYSTEMS AND ADVISE ON THESE ISSUES WORLDWIDE.

Project
JORDAN SPRINGS
VILLAGE OVAL

Architects
SUTERS ARCHITECTS PTY LTD

Client
CLOUSTON ASSOCIATES

Drawing Title
ELECTRICAL SERVICES
AMENITIES BUILDING
LIGHTING AND POWER LAYOUT

Date Printed
Scale
Sheet Size
Drawn
Check
Date

AS SHOWN A1 PD SEPT 2014

Project No. No. In Set/Drawing No. Issue
13657 05/ES103 B

B REVISED CC ISSUE 15-08-15
A CC ISSUE 15-10-14
Amendments

Jordan Springs Village Oval

Luminaire Schedule - With Photos


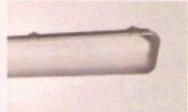
This schedule is to be read in conjunction with the specification and drawings as installation details and site conditions may influence the exact equipment supplied. Luminaire quantities are to be determined by Contractor as per specification. All copyrights HaronRobson PtyLtd

Type	Description	Lamp	Supplier	Fitting	Rev.	
BA	IP65 Weather Proof, Vandal Proof and Dust Proof Batten c/w Integral Electronic control gear . Luminaire Finish: White	29.5W LED 4000K	EAGLE LIGHTING	EL-DENL-1105-000	4	
BB	IP65 Weather Proof, Vandal Proof and Dust Proof Batten c/w Integral Electronic control gear . Luminaire Finish: White.	58W LED 4000K	EAGLE LIGHTING	EL-DENL-1106-000	4	
BC	IP65 Weather Proof, Vandal Proof and Dust Proof Batten c/w Integral Electronic control gear . Luminaire Finish: White.	20.5W LED 4000K	EAGLE LIGHTING	EL-DENL-1102-000	4	
BD	IP65 Weather Proof, Vandal Proof and Dust Proof Batten c/w Integral Electronic control gear . Luminaire Finish: White.	40W LED 4000K	EAGLE LIGHTING	EL-DENL-1103-000	4	
CA	IP44 Cleanroom ceiling plaster recessed luminaire with integral electronic control gear. Luminaire Finish: White	46.6W LED 4000K	EAGLE LIGHTING	EL-CR44L-824000P-000	4	

Jordan Springs

Luminaire Schedule - With Photos


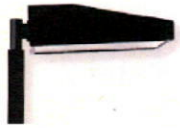
This schedule is to be read in conjunction with the specification and drawings as installation details and site conditions may influence the exact equipment supplied. Luminaire quantities are to be determined by Contractor as per specification. All copyrights HaronRobson PtyLtd

Type	Description	Lamp	Supplier	Fitting	Rev.	
EA	IK09 Vandal Resistant Surface Mounted Exit sign with pictograph, Self Contained, Maintained, Arrows as Indicated. CO=E1.25, C90=E1.25. Luminaire Finish: White	1 X 3.6W LED	STANILITE	VPQLED	1	
EBD	IP65 Weather Proof, Vandal Proof and Dust Proof Batten c/w Integral Electronic control gear and emergency battery kit. Classification: CO = D100, C90 = D40 Luminaire Finish: White.	40W LED 4000K	EAGLE LIGHTING	EL-DENL-1103-800	4	
P1	4.5 metre tall, baseplate mount, round straight steel pole with ragbolt assembly. to suit 1 x type SA fitting. Finish: Black		LIGMAN (JADE CROSS)	LIGMAN - 4.5M POLE	3	
P2	10.5 metre tall with 2 metre outreach arm, baseplate mount, round straight steel pole with ragbolt assembly. To suit 1 x type SB fitting. Finish: Black		SYLVANIA	SYLVANIA - 10.5M POLE	3	
P3	30 metre tapered octagonal floodlighting column with upper and lower cross arm to suit 4 x type SC fittings. c/w Access doors, bolts set and rag bolt assembly. Finish: Galvanised	N/A	SYLVANIA	SYLVANIA 30M POLE	3	

Jordan Springs

Luminaire Schedule - With Photos

This schedule is to be read in conjunction with the specification and drawings as installation details and site conditions may influence the exact equipment supplied. Luminaire quantities are to be determined by Contractor as per specification. All copyrights HaronRobson PtyLtd

Type	Description	Lamp	Supplier	Fitting	Rev.	
SA	IP54, IK07, wall surface mounted area light, with Type 3 distribution, integral electronic ballast. Luminaire Finish: Black	70W MH, Type 3 Distribution, 4000K	LIGMAN (JADE CROSS)	MN-91222	1	
SB	IP54, IK08 pole top luminaire with forward throw asymmetric distribution and 5° upcast. c/w integral electronic control gear. Luminaire Finish: Black	1x1000W Metal Halide 4000K	SYLVANIA	S51101	1	
SC	IP65, IK08 rated, cross arm mounted floodlight with narrow beam angle and remote located control gear. Luminaire Finish: Silver	1 x 2000W Metal Halide HIS-TD, 5800K	SYLVANIA	5NA76901WB0 2	3	